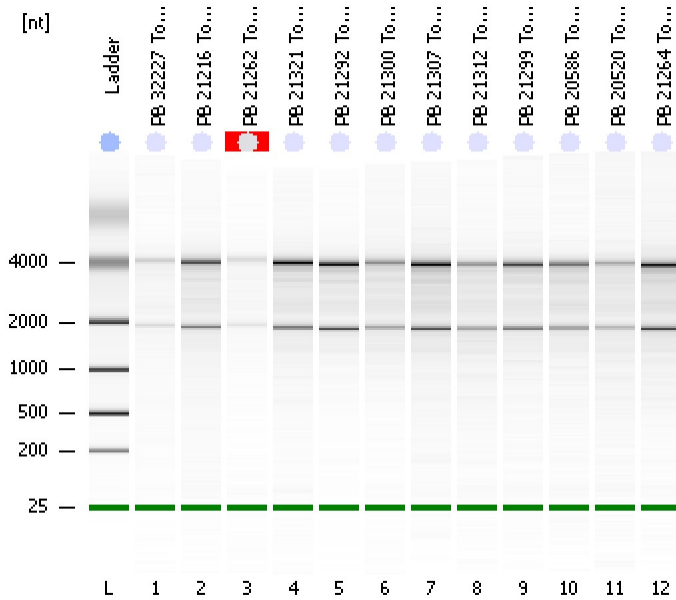


Assay Class: Eukaryote Total RNA Nano
Data Path: C:\...ents and Settings\Bioanalyzer\2013-10-09\2013-10-09_004.xad

Created: 10/9/2013 12:41:35 PM
Modified: 10/9/2013 1:05:28 PM

Electrophoresis File Run Summary



Instrument Information:

Instrument Name: DE13701086 Firmware: C.01.069
Serial#: DE13701086 Type: G2938B

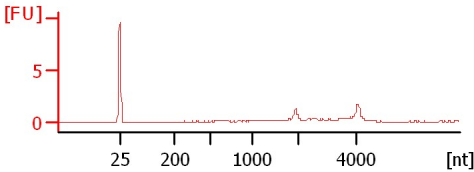
Assay Information:

Assay Origin Path: C:\Program Files\Agilent\2100 bioanalyzer\2100 expert\assays\RNA\Eukaryote Total RNA Nano Series II.xsy
Assay Class: Eukaryote Total RNA Nano
Version: 2.6
Assay Comments: Total RNA Analysis ng sensitivity (Eukaryote)
© Copyright 2003 - 2009 Agilent Technologies, Inc.

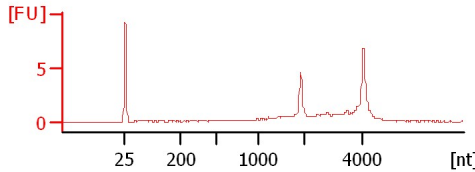
Chip Information:

Chip Lot #:
Reagent Kit Lot #:
Chip Comments:

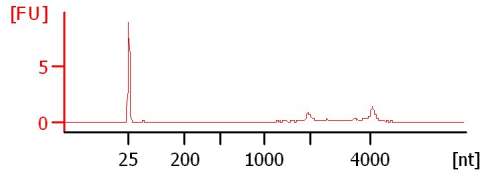
PB 32227 Total RNA
RIN: 6.70



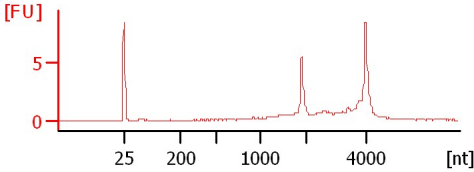
PB 21216 Total RNA
RIN: 8.10



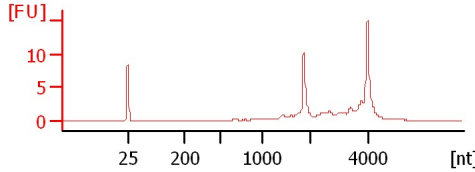
PB 21262 Total RNA
RIN N/A



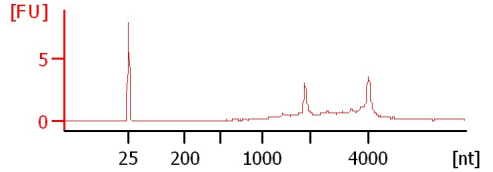
PB 21321 Total RNA
RIN: 8.60



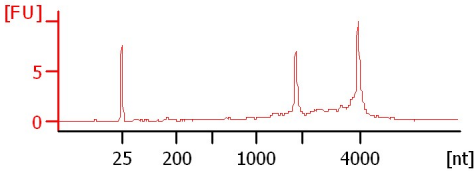
PB 21292 Total RNA
RIN: 8.90



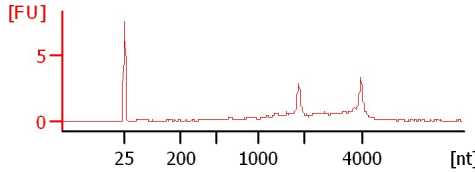
PB 21300 Total RNA
RIN: 7.90



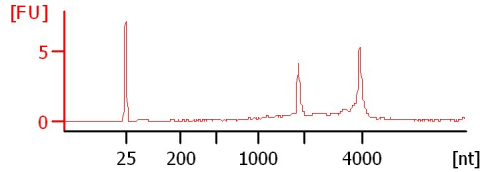
PB 21307 Total RNA
RIN: 8



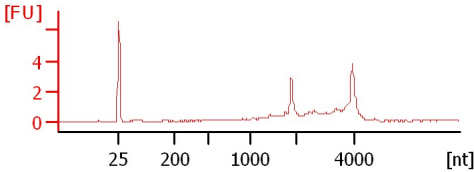
PB 21312 Total RNA
RIN: 6.80



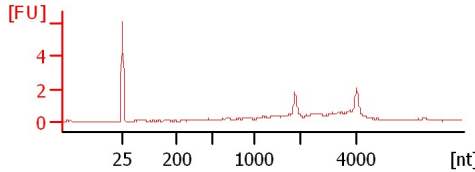
PB 21299 Total RNA
RIN: 8.10



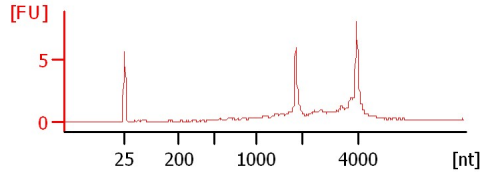
PB 20586 Total RNA
RIN: 7.20



PB 20520 Total RNA
RIN: 6.70



PB 21264 Total RNA
RIN: 8



Assay Class: Eukaryote Total RNA Nano
Data Path: C:\...ents and Settings\Bioanalyzer\2013-10-09\2013-10-09_004.xad

Created: 10/9/2013 12:41:35 PM
Modified: 10/9/2013 1:05:28 PM

Electrophoresis File Run Summary (Chip Summary)

Sample Name	Sample Comment	Status	Result Label	Result Color
PB 32227 Total RNA		✓	RIN: 6.70	
PB 21216 Total RNA		✓	RIN: 8.10	
PB 21262 Total RNA		✓	RIN N/A	
PB 21321 Total RNA		✓	RIN: 8.60	
PB 21292 Total RNA		✓	RIN: 8.90	
PB 21300 Total RNA		✓	RIN: 7.90	
PB 21307 Total RNA		✓	RIN:8	
PB 21312 Total RNA		✓	RIN: 6.80	
PB 21299 Total RNA		✓	RIN: 8.10	
PB 20586 Total RNA		✓	RIN: 7.20	
PB 20520 Total RNA		✓	RIN: 6.70	
PB 21264 Total RNA		✓	RIN:8	
Ladder		✓	All Other Samples	

Chip Lot #

Reagent Kit Lot #

Chip Comments :

Assay Class: Eukaryote Total RNA Nano
Data Path: C:\...ents and Settings\Bioanalyzer\2013-10-09\2013-10-09_004.xad

Created: 10/9/2013 12:41:35 PM
Modified: 10/9/2013 1:05:28 PM

Electrophoresis Assay Details

General Analysis Settings

Number of Available Sample and Ladder Wells (Max.) : 13
Minimum Visible Range [s] : 17
Maximum Visible Range [s] : 70
Start Analysis Time Range [s] : 19
End Analysis Time Range [s] : 69
Ladder Concentration [ng/ μ l] : 150
Lower Marker Concentration [ng/ μ l] : 0
Upper Marker Concentration [ng/ μ l] : 0
Used Lower Marker for Quantitation
Standard Curve Fit is Logarithmic
Show Data Aligned to Lower Marker

Integrator Settings

Integration Start Time [s] : 19
Integration End Time [s] : 69
Slope Threshold : 0.6
Height Threshold [FU] : 0.5
Area Threshold : 0.2
Width Threshold [s] : 0.5
Baseline Plateau [s] : 6

Filter Settings

Filter Width [s] : 0.5
Polynomial Order : 4

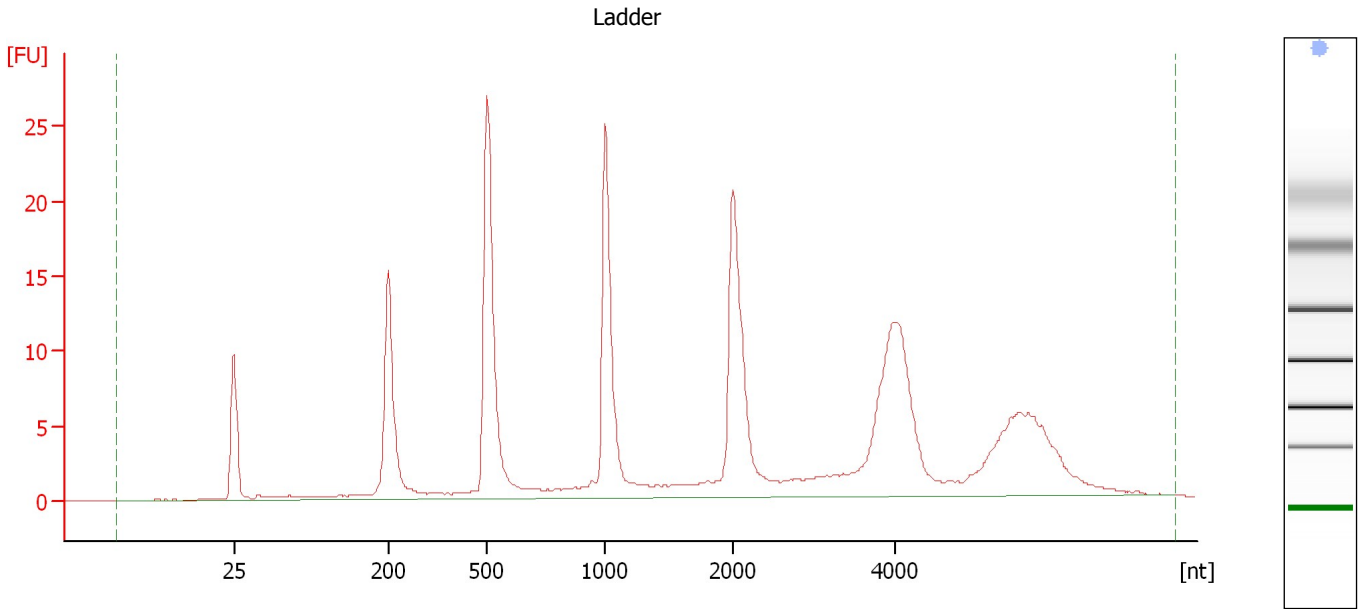
Ladder

Ladder Peak	Size
1	25
2	200
3	500
4	1000
5	2000
6	4000

Assay Class: Eukaryote Total RNA Nano
Data Path: C:\...ents and Settings\Bioanalyzer\2013-10-09\2013-10-09_004.xad

Created: 10/9/2013 12:41:35 PM
Modified: 10/9/2013 1:05:28 PM

Electropherogram Summary



Overall Results for Ladder

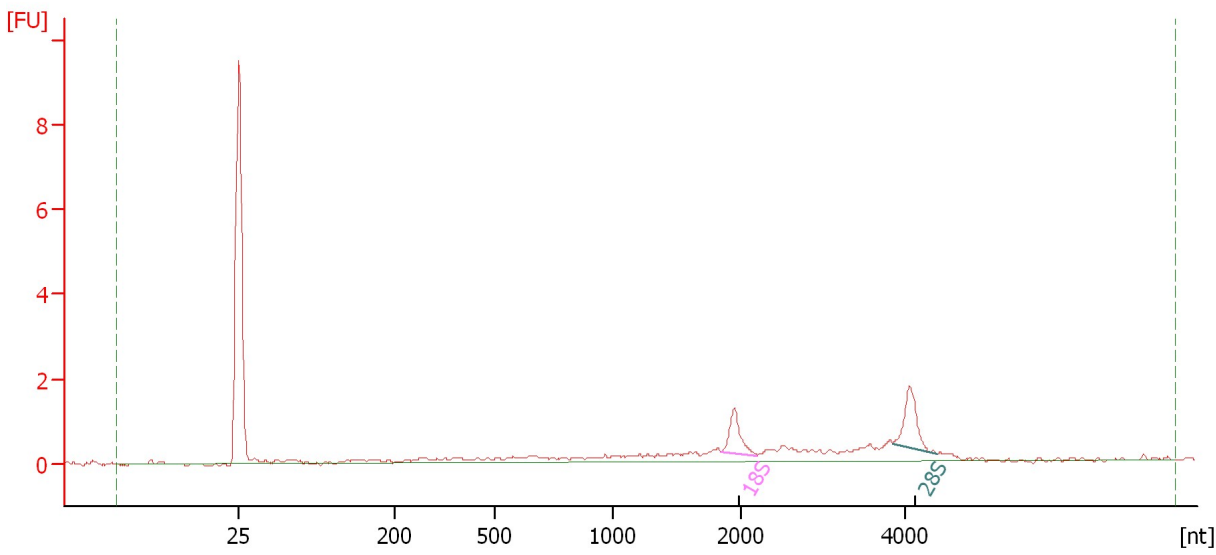
RNA Area:	229.5	Result Flagging Color:	
RNA Concentration:	150 ng/μl	Result Flagging Label:	All Other Samples

Assay Class: Eukaryote Total RNA Nano
Data Path: C:\...ents and Settings\Bioanalyzer\2013-10-09\2013-10-09_004.xad

Created: 10/9/2013 12:41:35 PM
Modified: 10/9/2013 1:05:28 PM

Electropherogram Summary Continued ...

PB 32227 Total RNA



Overall Results for sample 1 : PB 32227 Total RNA

RNA Area: 16.1 RNA Integrity Number (RIN): 6.7 (B.02.08)
RNA Concentration: 11 ng/μl Result Flagging Color:
rRNA Ratio [28s / 18s]: 1.3 Result Flagging Label: RIN: 6.70

Fragment table for sample 1 : PB 32227 Total RNA

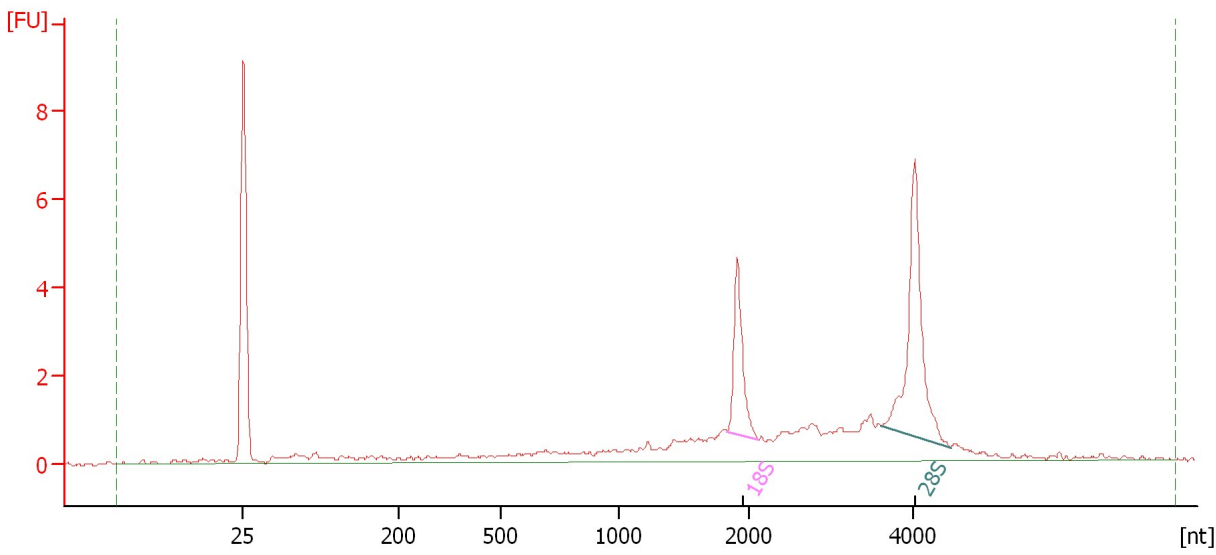
Name	Start Size [nt]	End Size [nt]	Area	% of total Area
18S	1,852	2,199	1.2	7.7
28S	3,857	4,392	1.6	10.2

Assay Class: Eukaryote Total RNA Nano
Data Path: C:\...ents and Settings\Bioanalyzer\2013-10-09\2013-10-09_004.xad

Created: 10/9/2013 12:41:35 PM
Modified: 10/9/2013 1:05:28 PM

Electropherogram Summary Continued ...

PB 21216 Total RNA



Overall Results for sample 2 : PB 21216 Total RNA

RNA Area:	38.6	RNA Integrity Number (RIN):	8.1 (B.02.08)
RNA Concentration:	25 ng/μl	Result Flagging Color:	
rRNA Ratio [28s / 18s]:	2.1	Result Flagging Label:	RIN: 8.10

Fragment table for sample 2 : PB 21216 Total RNA

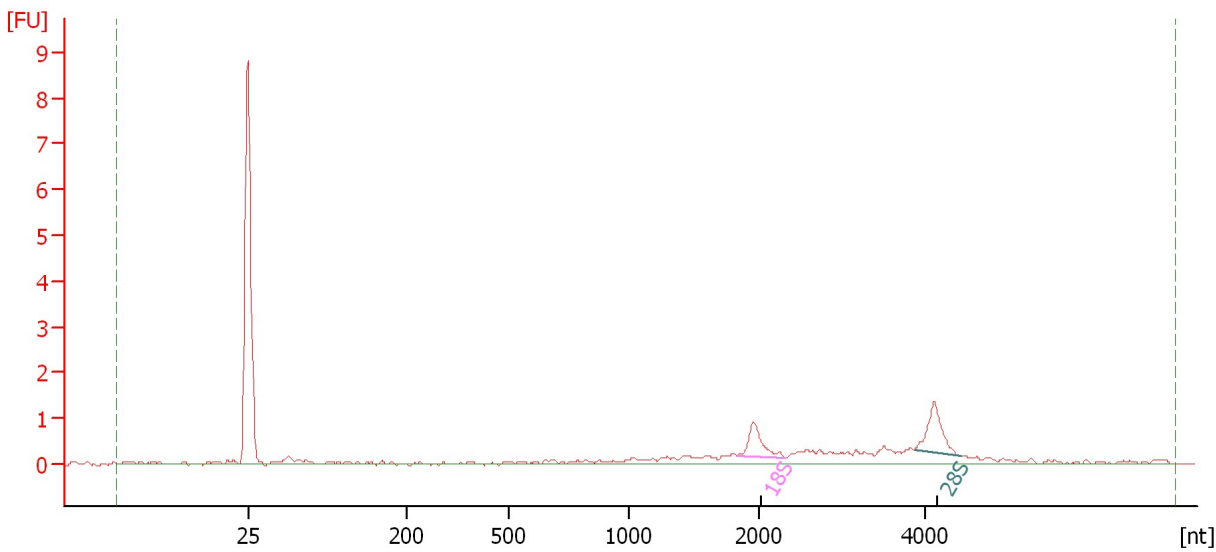
Name	Start Size [nt]	End Size [nt]	Area	% of total Area
18S	1,830	2,110	3.8	9.7
28S	3,599	4,441	7.8	20.2

Assay Class: Eukaryote Total RNA Nano
 Data Path: C:\...ents and Settings\Bioanalyzer\2013-10-09\2013-10-09_004.xad

Created: 10/9/2013 12:41:35 PM
 Modified: 10/9/2013 1:05:28 PM

Electropherogram Summary Continued ...

PB 21262 Total RNA



Overall Results for sample 3 : PB 21262 Total RNA

RNA Area:	9.7	RNA Integrity Number (RIN):	N/A (B.02.08)
RNA Concentration:	6 ng/μl	Result Flagging Color:	
rRNA Ratio [28s / 18s]:	1.3	Result Flagging Label:	RIN N/A

Fragment table for sample 3 : PB 21262 Total RNA

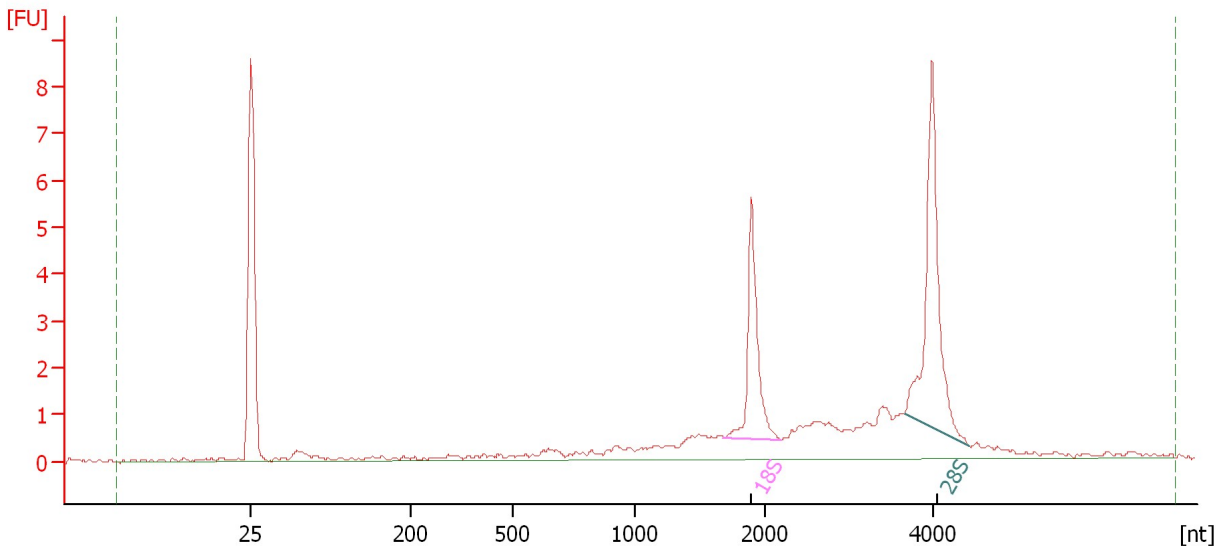
Name	Start Size [nt]	End Size [nt]	Area	% of total Area
18S	1,835	2,306	1.1	11.1
28S	3,858	4,415	1.4	14.9

Assay Class: Eukaryote Total RNA Nano
Data Path: C:\...ents and Settings\Bioanalyzer\2013-10-09\2013-10-09_004.xad

Created: 10/9/2013 12:41:35 PM
Modified: 10/9/2013 1:05:28 PM

Electropherogram Summary Continued ...

PB 21321 Total RNA



Overall Results for sample 4 : PB 21321 Total RNA

RNA Area:	37.7	RNA Integrity Number (RIN):	8.6 (B.02.08)
RNA Concentration:	25 ng/μl	Result Flagging Color:	
rRNA Ratio [28s / 18s]:	1.7	Result Flagging Label:	RIN: 8.60

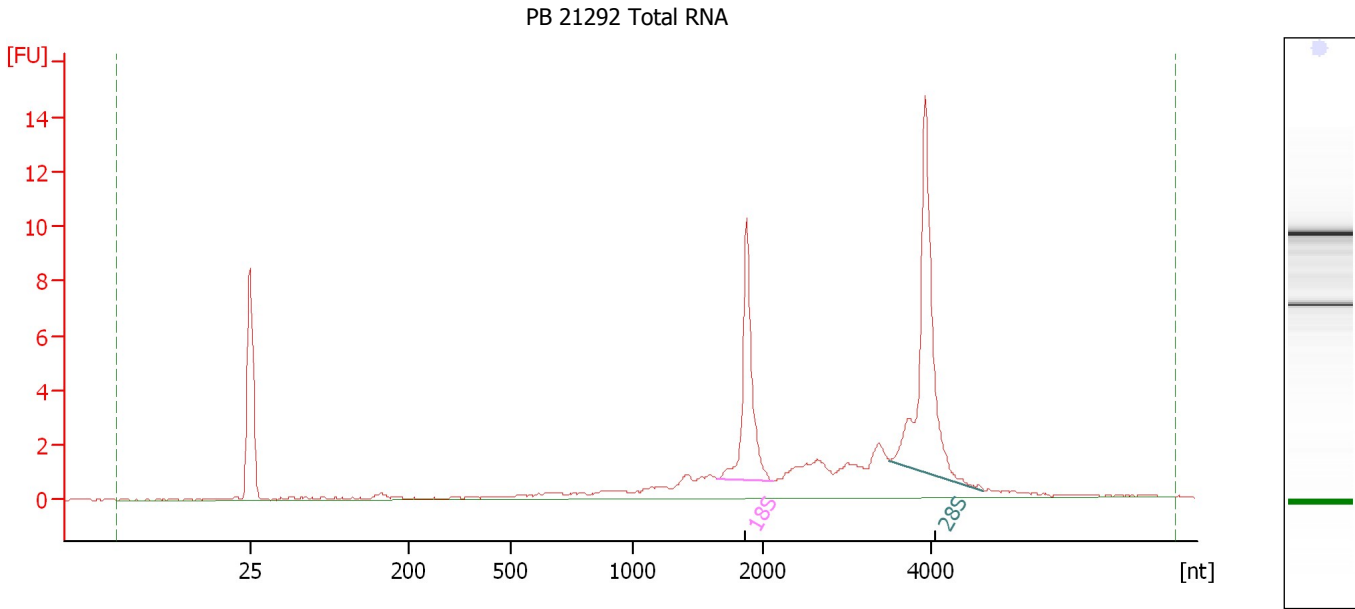
Fragment table for sample 4 : PB 21321 Total RNA

Name	Start Size [nt]	End Size [nt]	Area	% of total Area
18S	1,683	2,192	5.2	13.7
28S	3,658	4,423	8.8	23.4

Assay Class: Eukaryote Total RNA Nano
 Data Path: C:\...ents and Settings\Bioanalyzer\2013-10-09\2013-10-09_004.xad

Created: 10/9/2013 12:41:35 PM
 Modified: 10/9/2013 1:05:28 PM

Electropherogram Summary Continued ...



Overall Results for sample 5 : PB 21292 Total RNA

RNA Area:	60.0	RNA Integrity Number (RIN):	8.9 (B.02.08)
RNA Concentration:	39 ng/μl	Result Flagging Color:	
rRNA Ratio [28s / 18s]:	1.7	Result Flagging Label:	RIN: 8.90

Fragment table for sample 5 : PB 21292 Total RNA

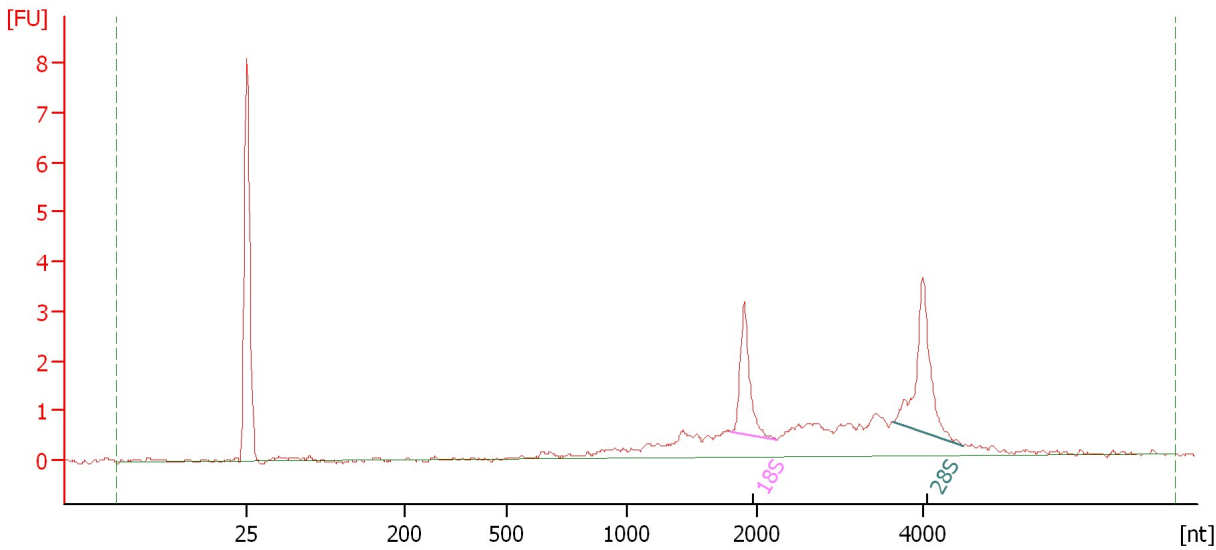
Name	Start Size [nt]	End Size [nt]	Area	% of total Area
18S	1,649	2,102	9.6	15.9
28S	3,507	4,631	15.8	26.3

Assay Class: Eukaryote Total RNA Nano
Data Path: C:\...ents and Settings\Bioanalyzer\2013-10-09\2013-10-09_004.xad

Created: 10/9/2013 12:41:35 PM
Modified: 10/9/2013 1:05:28 PM

Electropherogram Summary Continued ...

PB 21300 Total RNA



Overall Results for sample 6 : PB 21300 Total RNA

RNA Area: 24.6 RNA Integrity Number (RIN): 7.9 (B.02.08)
RNA Concentration: 16 ng/μl Result Flagging Color:
rRNA Ratio [28s / 18s]: 1.6 Result Flagging Label: RIN: 7.90

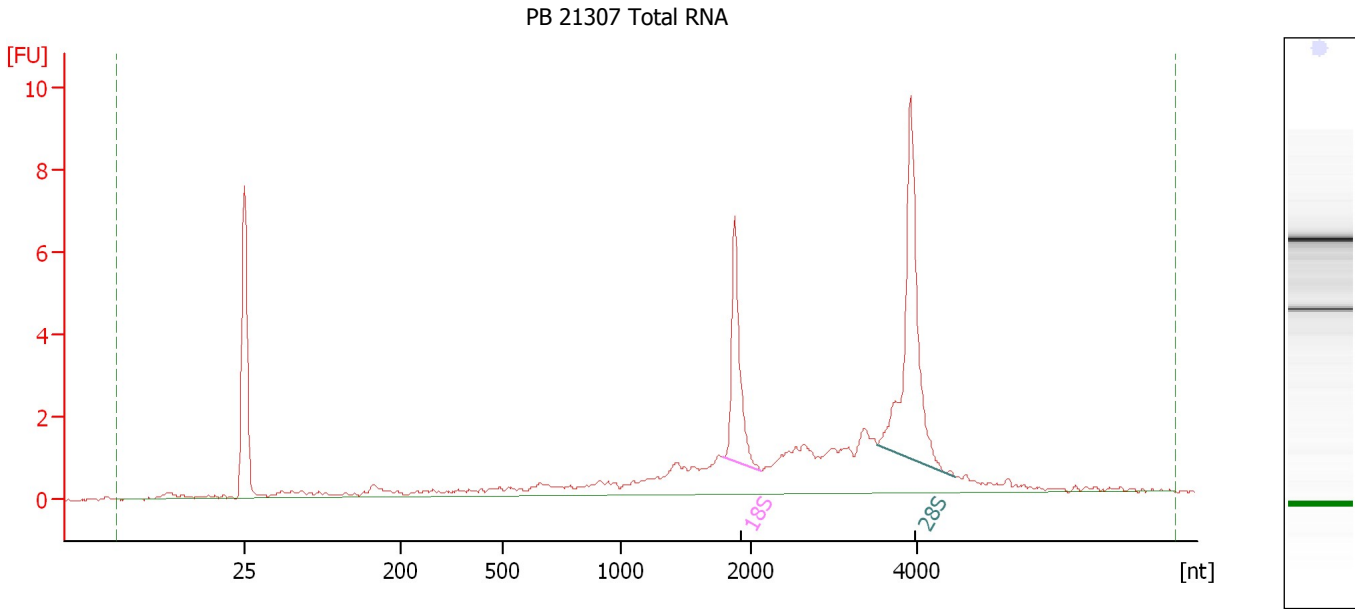
Fragment table for sample 6 : PB 21300 Total RNA

Name	Start Size [nt]	End Size [nt]	Area	% of total Area
18S	1,801	2,241	2.7	10.9
28S	3,629	4,464	4.2	17.2

Assay Class: Eukaryote Total RNA Nano
Data Path: C:\...ents and Settings\Bioanalyzer\2013-10-09\2013-10-09_004.xad

Created: 10/9/2013 12:41:35 PM
Modified: 10/9/2013 1:05:28 PM

Electropherogram Summary Continued ...



Overall Results for sample 7 : PB 21307 Total RNA

RNA Area: 51.1 RNA Integrity Number (RIN): 8 (B.02.08)
RNA Concentration: 33 ng/μl Result Flagging Color:
rRNA Ratio [28s / 18s]: 1.9 Result Flagging Label: RIN:8

Fragment table for sample 7 : PB 21307 Total RNA

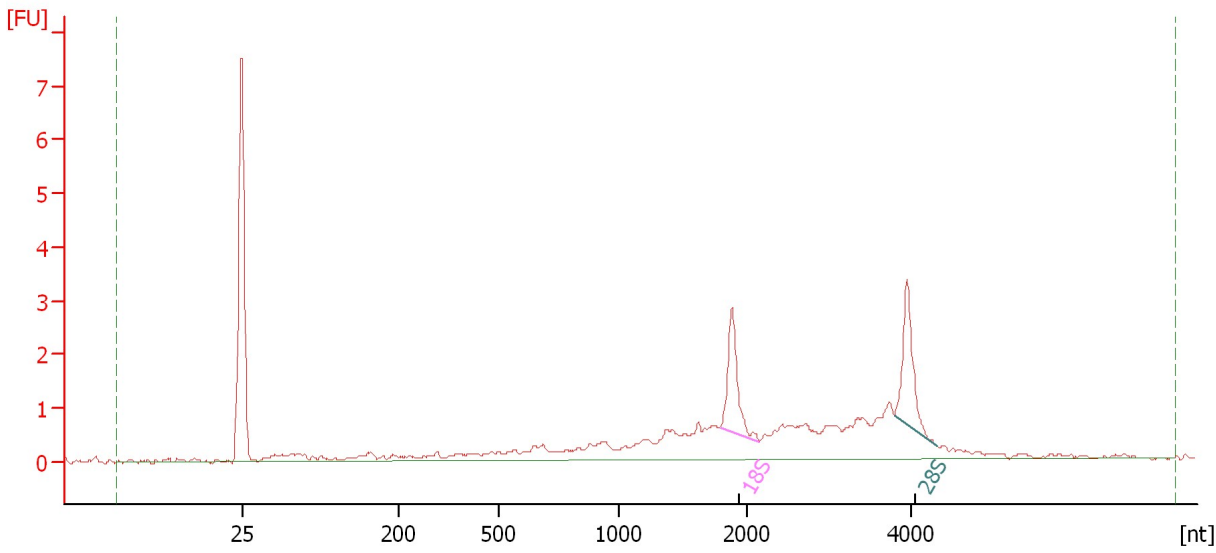
Name	Start Size [nt]	End Size [nt]	Area	% of total Area
18S	1,790	2,124	5.3	10.4
28S	3,533	4,476	10.3	20.2

Assay Class: Eukaryote Total RNA Nano
 Data Path: C:\...ents and Settings\Bioanalyzer\2013-10-09\2013-10-09_004.xad

Created: 10/9/2013 12:41:35 PM
 Modified: 10/9/2013 1:05:28 PM

Electropherogram Summary Continued ...

PB 21312 Total RNA



Overall Results for sample 8 : PB 21312 Total RNA

RNA Area:	29.2	RNA Integrity Number (RIN):	6.8 (B.02.08)
RNA Concentration:	19 ng/μl	Result Flagging Color:	
rRNA Ratio [28s / 18s]:	1.0	Result Flagging Label:	RIN: 6.80

Fragment table for sample 8 : PB 21312 Total RNA

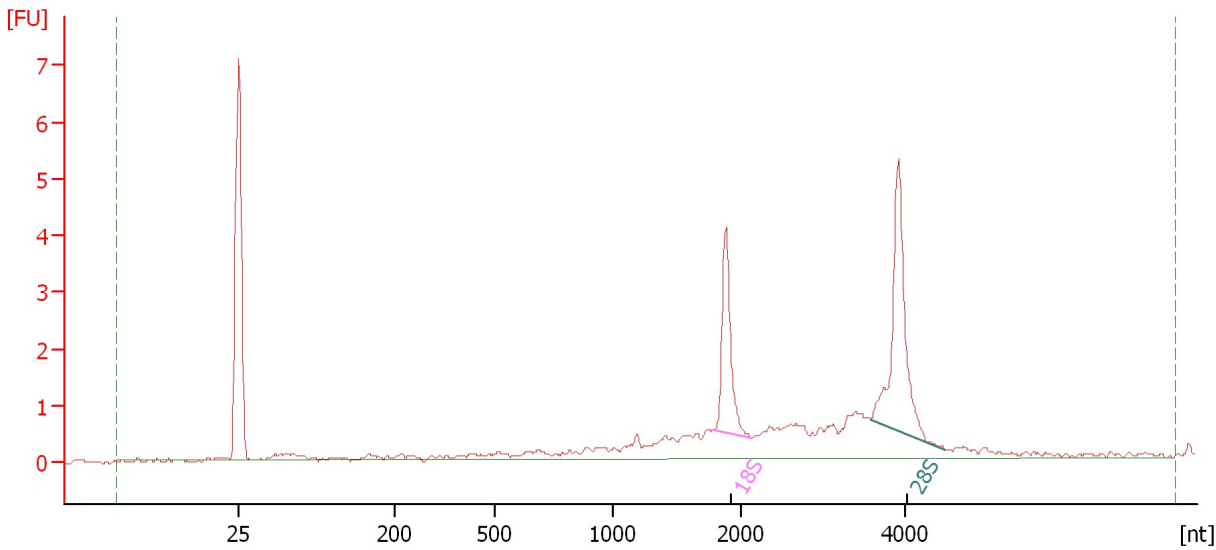
Name	Start Size [nt]	End Size [nt]	Area	% of total Area
18S	1,796	2,148	2.6	8.8
28S	3,796	4,315	2.6	8.8

Assay Class: Eukaryote Total RNA Nano
Data Path: C:\...ents and Settings\Bioanalyzer\2013-10-09\2013-10-09_004.xad

Created: 10/9/2013 12:41:35 PM
Modified: 10/9/2013 1:05:28 PM

Electropherogram Summary Continued ...

PB 21299 Total RNA



Overall Results for sample 9 : PB 21299 Total RNA

RNA Area: 27.5 RNA Integrity Number (RIN): 8.1 (B.02.08)
RNA Concentration: 18 ng/μl Result Flagging Color:
rRNA Ratio [28s / 18s]: 1.7 Result Flagging Label: RIN: 8.10

Fragment table for sample 9 : PB 21299 Total RNA

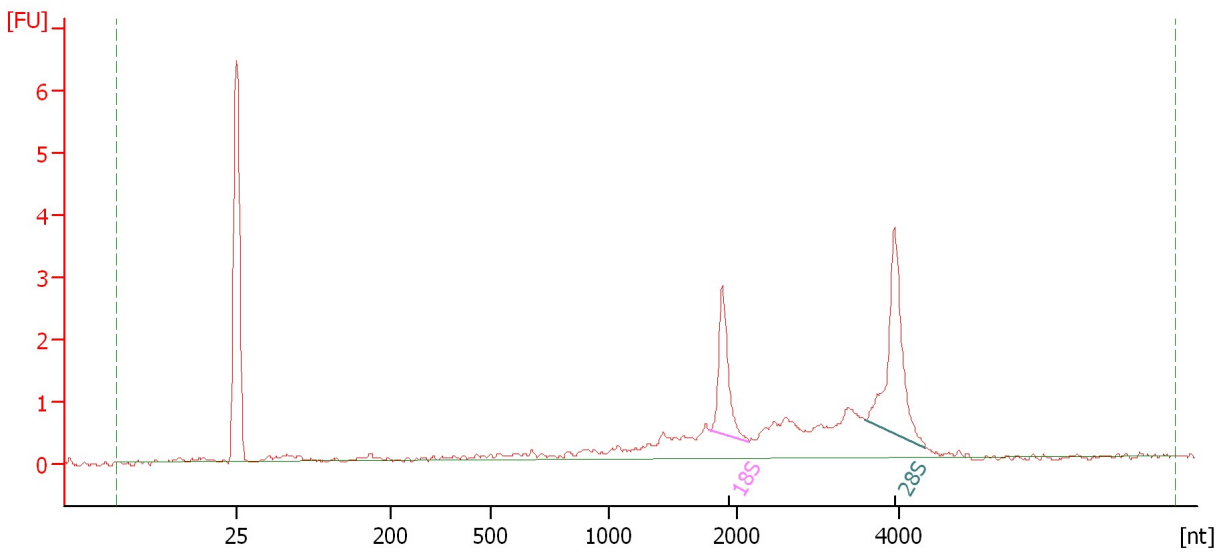
Name	Start Size [nt]	End Size [nt]	Area	% of total Area
18S	1,785	2,134	3.3	12.2
28S	3,583	4,496	5.7	20.8

Assay Class: Eukaryote Total RNA Nano
Data Path: C:\...ents and Settings\Bioanalyzer\2013-10-09\2013-10-09_004.xad

Created: 10/9/2013 12:41:35 PM
Modified: 10/9/2013 1:05:28 PM

Electropherogram Summary Continued ...

PB 20586 Total RNA



Overall Results for sample 10 : PB 20586 Total RNA

RNA Area:	21.2	RNA Integrity Number (RIN):	7.2 (B.02.08)
RNA Concentration:	14 ng/μl	Result Flagging Color:	
rRNA Ratio [28s / 18s]:	1.7	Result Flagging Label:	RIN: 7.20

Fragment table for sample 10 : PB 20586 Total RNA

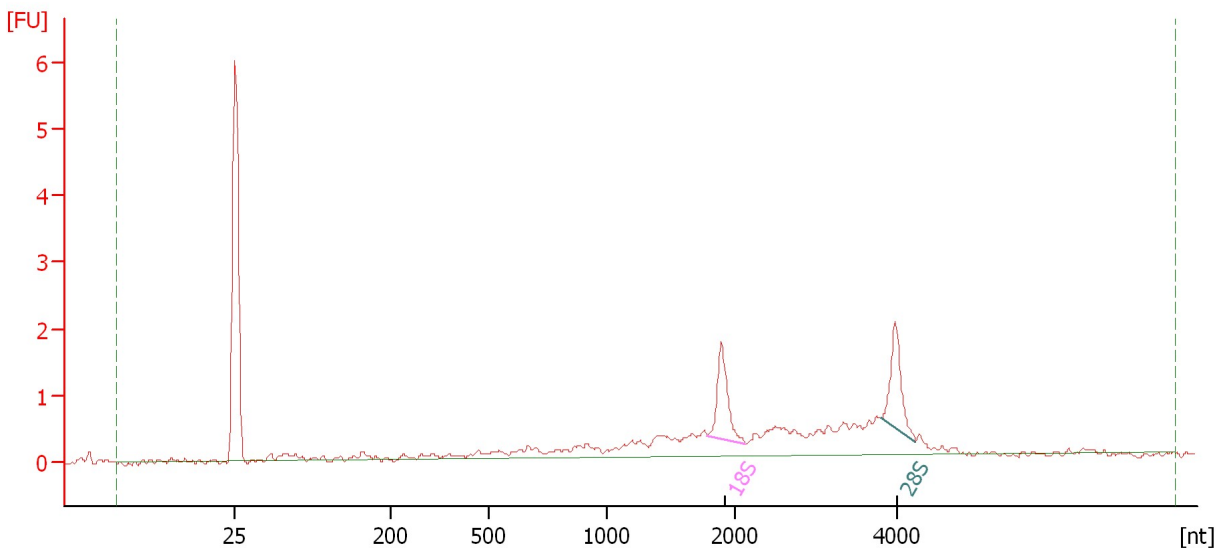
Name	Start Size [nt]	End Size [nt]	Area	% of total Area
18S	1,783	2,159	2.5	11.6
28S	3,578	4,321	4.3	20.3

Assay Class: Eukaryote Total RNA Nano
Data Path: C:\...ents and Settings\Bioanalyzer\2013-10-09\2013-10-09_004.xad

Created: 10/9/2013 12:41:35 PM
Modified: 10/9/2013 1:05:28 PM

Electropherogram Summary Continued ...

PB 20520 Total RNA



Overall Results for sample 11 : PB 20520 Total RNA

RNA Area: 16.4 RNA Integrity Number (RIN): 6.7 (B.02.08)
RNA Concentration: 11 ng/μl Result Flagging Color:
rRNA Ratio [28s / 18s]: 0.9 Result Flagging Label: RIN: 6.70

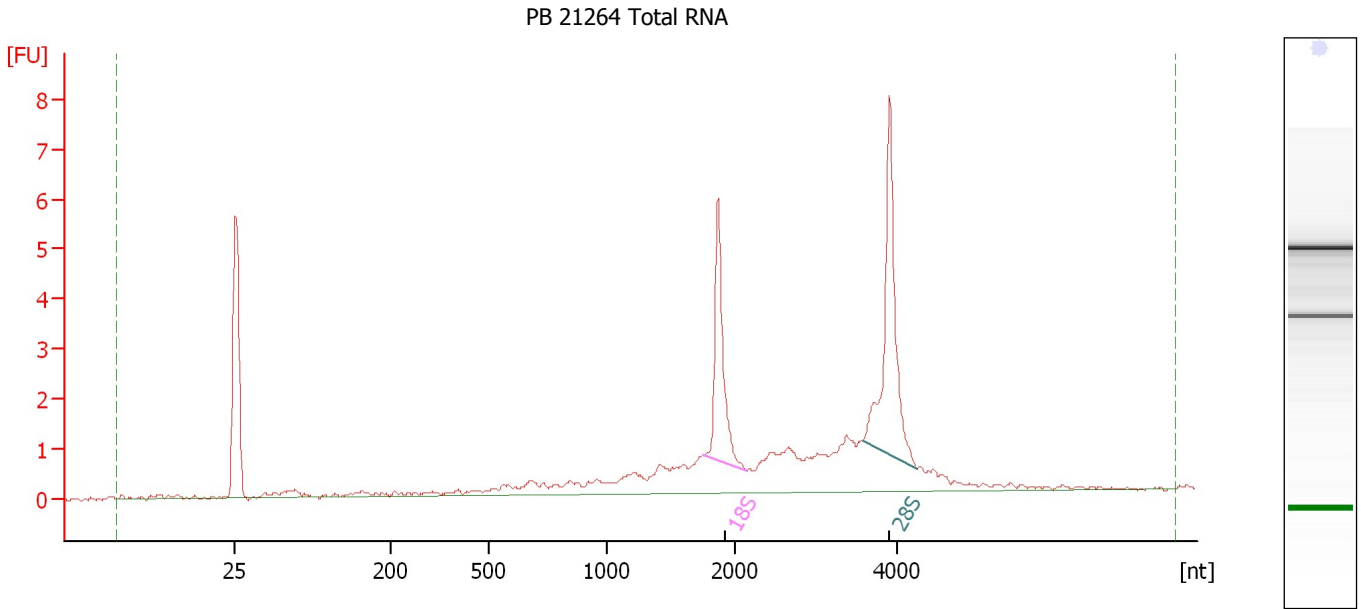
Fragment table for sample 11 : PB 20520 Total RNA

Name	Start Size [nt]	End Size [nt]	Area	% of total Area
18S	1,790	2,132	1.6	10.0
28S	3,799	4,220	1.6	9.5

Assay Class: Eukaryote Total RNA Nano
Data Path: C:\...ents and Settings\Bioanalyzer\2013-10-09\2013-10-09_004.xad

Created: 10/9/2013 12:41:35 PM
Modified: 10/9/2013 1:05:28 PM

Electropherogram Summary Continued ...



Overall Results for sample 12 : PB 21264 Total RNA

RNA Area:	37.5	RNA Integrity Number (RIN):	8 (B.02.08)
RNA Concentration:	24 ng/μl	Result Flagging Color:	
rRNA Ratio [28s / 18s]:	1.5	Result Flagging Label:	RIN:8

Fragment table for sample 12 : PB 21264 Total RNA

Name	Start Size [nt]	End Size [nt]	Area	% of total Area
18S	1,757	2,145	4.9	13.1
28S	3,576	4,233	7.5	20.0

Assay Class: Eukaryote Total RNA Nano
Data Path: C:\...ents and Settings\Bioanalyzer\2013-10-09\2013-10-09_004.xad

Created: 10/9/2013 12:41:35 PM
Modified: 10/9/2013 1:05:28 PM

Gel Image

