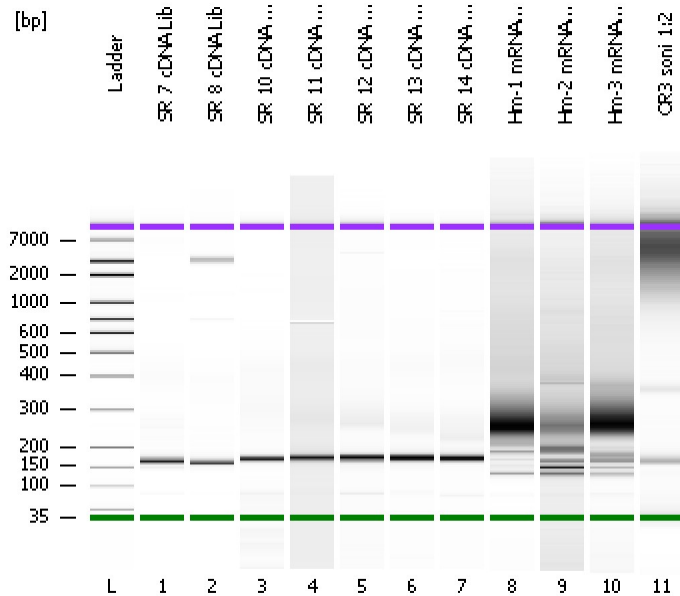


Assay Class: High Sensitivity DNA Assay
Data Path: C:\...ents and Settings\Bioanalyzer\2013-10-10\2013-10-10_004.xad

Created: 10/10/2013 4:40:31 PM
Modified: 10/10/2013 5:33:04 PM

Electrophoresis File Run Summary



Instrument Information:

Instrument Name: DE13701086 Firmware: C.01.069
Serial#: DE13701086 Type: G2938B

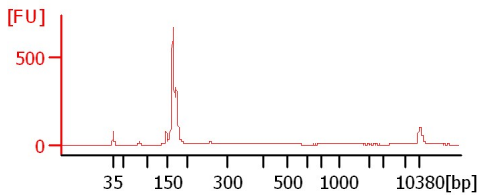
Assay Information:

Assay Origin Path: C:\Program Files\Agilent\2100 bioanalyzer\2100 expert\assays\dsDNA\High Sensitivity DNA.xsy
Assay Class: High Sensitivity DNA Assay
Version: 1.03
Assay Comments: Copyright © 2003-2010 Agilent Technologies

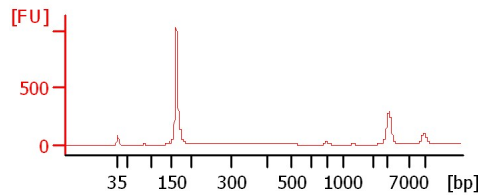
Chip Information:

Chip Lot #:
Reagent Kit Lot #:
Chip Comments:

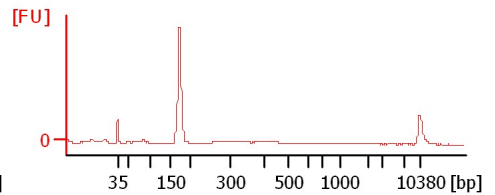
SR 7 cDNA Lib



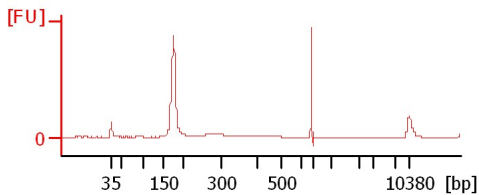
SR 8 cDNA Lib



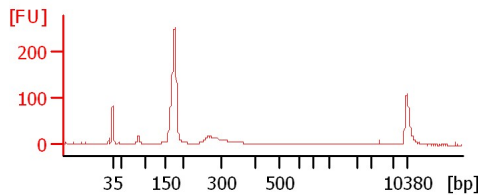
SR 10 cDNA Lib



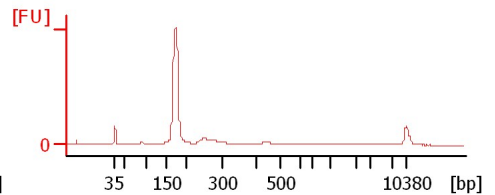
SR 11 cDNA Lib



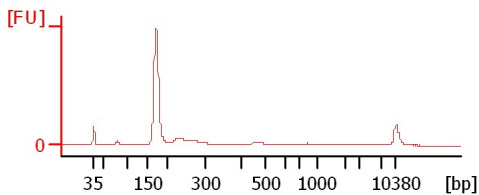
SR 12 cDNA Lib



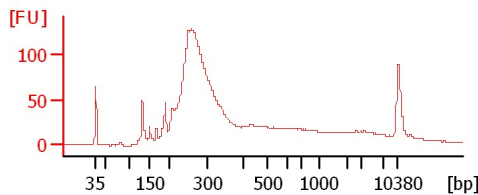
SR 13 cDNA Lib



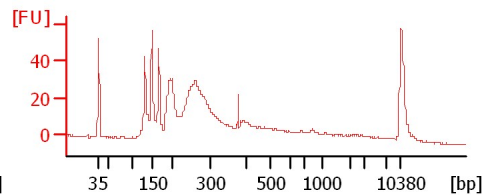
SR 14 cDNA Lib



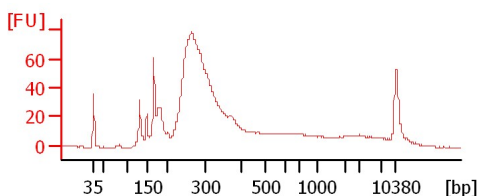
Hm-1 mRNA Lib



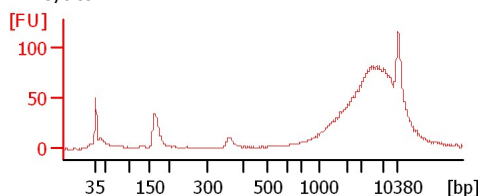
Hm-2 mRNA Lib



Hm-3 mRNA Lib



OR3 soni 1:2



Assay Class: High Sensitivity DNA Assay
Data Path: C:\...ents and Settings\Bioanalyzer\2013-10-10\2013-10-10_004.xad

Created: 10/10/2013 4:40:31 PM
Modified: 10/10/2013 5:33:04 PM

Electrophoresis File Run Summary (Chip Summary)

Sample Name	Sample Comment	Rest. Digest	Status	Observation	Result Label	Result Color
SR 7 cDNA Lib		<input type="checkbox"/>	✓			
SR 8 cDNA Lib		<input type="checkbox"/>	✓			
SR 10 cDNA Lib		<input type="checkbox"/>	✓			
SR 11 cDNA Lib		<input type="checkbox"/>	✓			
SR 12 cDNA Lib		<input type="checkbox"/>	✓			
SR 13 cDNA Lib		<input type="checkbox"/>	✓			
SR 14 cDNA Lib		<input type="checkbox"/>	✓			
Hm-1 mRNA Lib		<input type="checkbox"/>	✓			
Hm-2 mRNA Lib		<input type="checkbox"/>	✓			
Hm-3 mRNA Lib		<input type="checkbox"/>	✓			
OR3 soni 1:2	42Cycles	<input type="checkbox"/>	✓			
Ladder		<input type="checkbox"/>	✓			

Chip Lot #

Reagent Kit Lot #

Chip Comments :

Assay Class: High Sensitivity DNA Assay
Data Path: C:\...ents and Settings\Bioanalyzer\2013-10-10\2013-10-10_004.xad

Created: 10/10/2013 4:40:31 PM
Modified: 10/10/2013 5:33:04 PM

Electrophoresis Assay Details

General Analysis Settings

Number of Available Sample and Ladder Wells (Max.) : 12
Minimum Visible Range [s] : 32
Maximum Visible Range [s] : 138
Start Analysis Time Range [s] : 33
End Analysis Time Range [s] : 137.5
Ladder Concentration [pg/μl] : 1950
Uses Standard Area for Ladder Fragments
Lower Marker Concentration [pg/μl] : 125
Upper Marker Concentration [pg/μl] : 75
Used Upper Marker for Quantitation
Standard Curve Fit is Point to Point
Show Data Aligned to Lower and Upper Marker

Integrator Settings

Integration Start Time [s] : 33.05
Integration End Time [s] : 137
Slope Threshold : 0.8
Height Threshold [FU] : 5
Area Threshold : 0.1
Width Threshold [s] : 0.6
Baseline Plateau [s] : 0.5

Filter Settings

Filter Width [s] : 0.5
Polynomial Order : 4

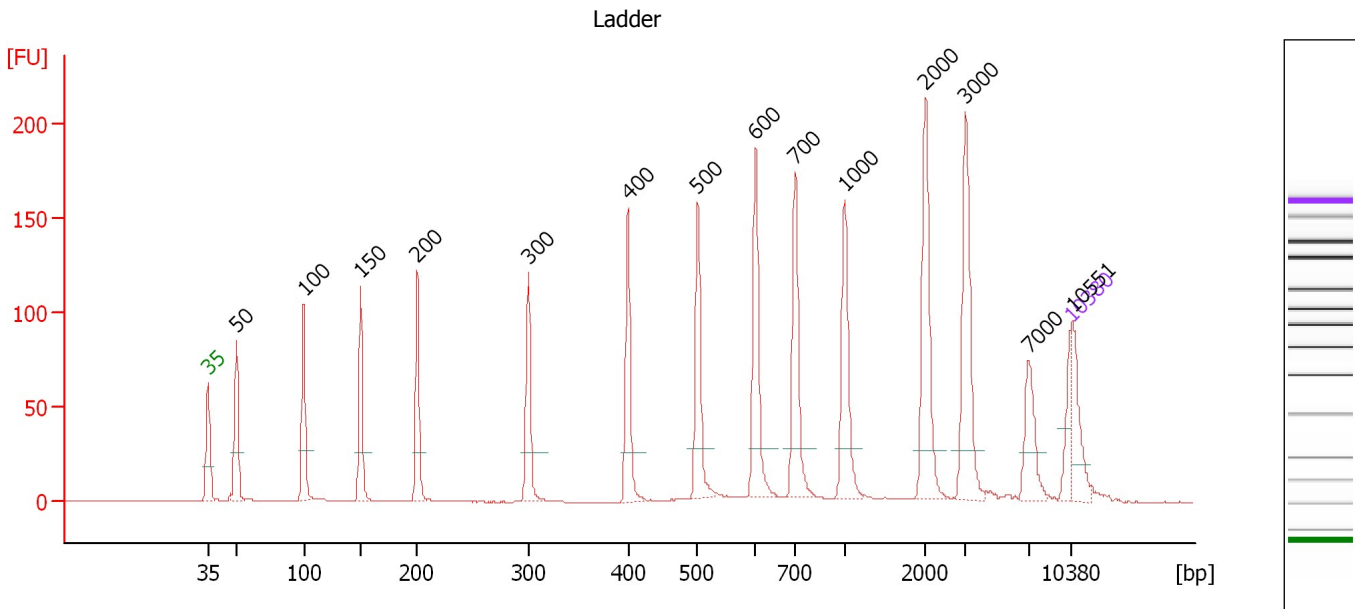
Ladder

Ladder Peak	Size	Area
1	35	160
2	50	210
3	100	208
4	150	221
5	200	242
6	300	270
7	400	305
8	500	306
9	600	336
10	700	321
11	1000	366
12	2000	413
13	3000	411
14	7000	400
15	10380	214

Assay Class: High Sensitivity DNA Assay
 Data Path: C:\...ents and Settings\Bioanalyzer\2013-10-10\2013-10-10_004.xad

Created: 10/10/2013 4:40:31 PM
 Modified: 10/10/2013 5:33:04 PM

Electropherogram Summary



Overall Results for Ladder

Noise: 0.1

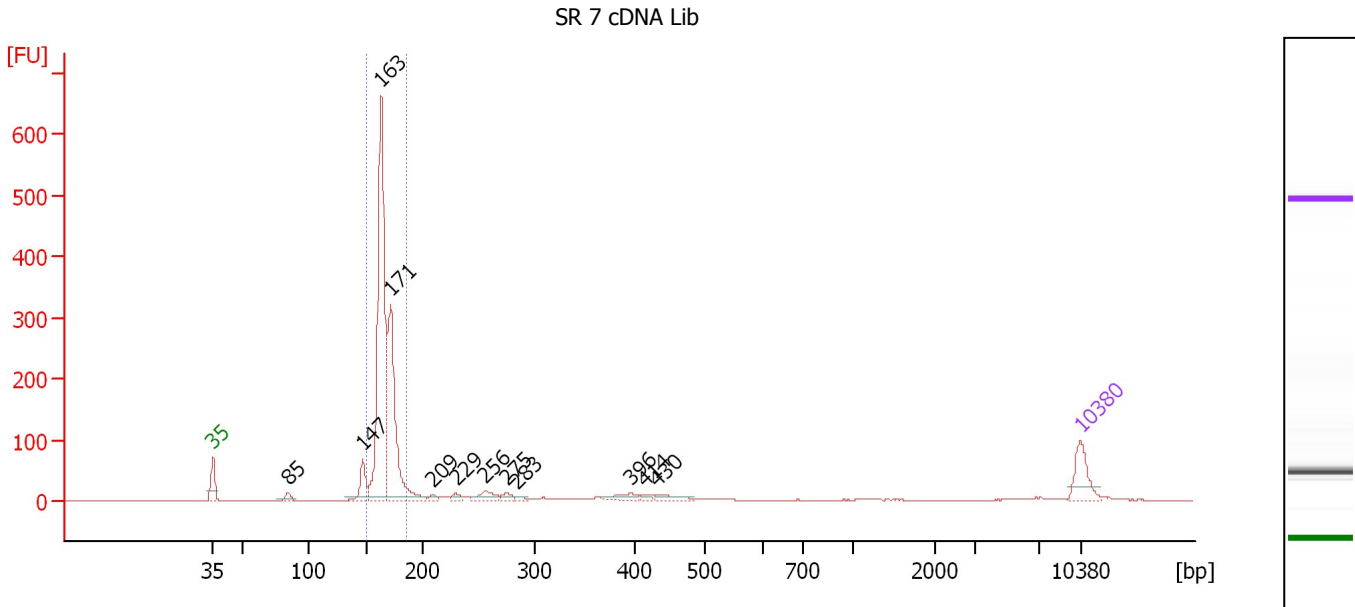
Peak table for Ladder

Peak	Size [bp]	Conc. [pg/μl]	Molarity [pmol/l]	Observations
1	35	125.00	5,411.3	Lower Marker
2	50	150.00	4,545.5	Ladder Peak
3	100	150.00	2,272.7	Ladder Peak
4	150	150.00	1,515.2	Ladder Peak
5	200	150.00	1,136.4	Ladder Peak
6	300	150.00	757.6	Ladder Peak
7	400	150.00	568.2	Ladder Peak
8	500	150.00	454.5	Ladder Peak
9	600	150.00	378.8	Ladder Peak
10	700	150.00	324.7	Ladder Peak
11	1,000	150.00	227.3	Ladder Peak
12	2,000	150.00	113.6	Ladder Peak
13	3,000	150.00	75.8	Ladder Peak
14	7,000	150.00	32.5	Ladder Peak
15	10,380	75.00	10.9	Upper Marker
16	10,551	0.00	0.0	

Assay Class: High Sensitivity DNA Assay
 Data Path: C:\...ents and Settings\Bioanalyzer\2013-10-10\2013-10-10_004.xad

Created: 10/10/2013 4:40:31 PM
 Modified: 10/10/2013 5:33:04 PM

Electropherogram Summary Continued ...



Overall Results for sample 1 : SR 7 cDNA Lib

Number of peaks found: 12 Corr. Area 1: 1,214.5
 Noise: 0.1

Peak table for sample 1 : SR 7 cDNA Lib

Peak	Size [bp]	Conc. [pg/μl]	Molarity [pmol/l]	Observations
1	35	125.00	5,411.3	Lower Marker
2	85	24.40	437.0	
3	147	97.28	1,003.6	
4	163	1,083.05	10,081.9	
5	171	572.59	5,067.4	
6	209	12.90	93.6	
7	229	17.07	112.9	
8	256	44.07	261.1	
9	275	18.07	99.6	
10	283	8.51	45.5	
11	396	32.22	123.3	
12	414	11.24	41.2	
13	430	25.13	88.4	
14	10,380	75.00	10.9	Upper Marker

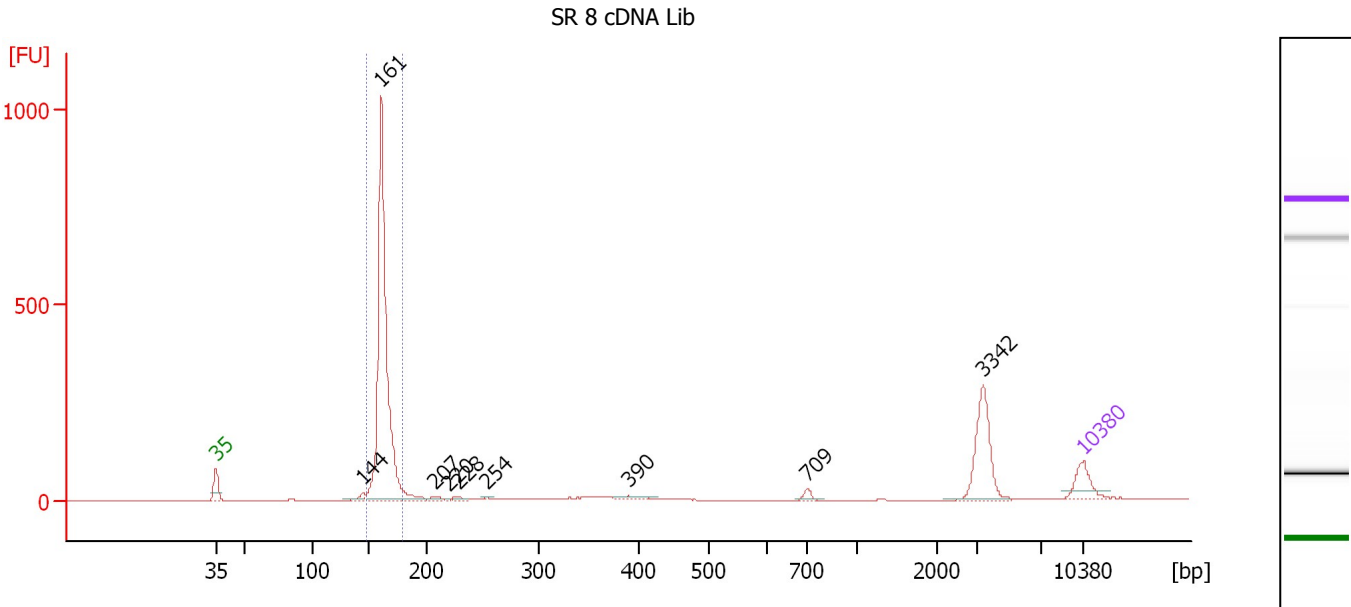
Region table for sample 1 : SR 7 cDNA Lib

From [bp]	To [bp]	Average Size [bp]	Molarity [pmol/l]	Conc. [pg/μl]	Corr. Area	% of Total	Size distribution in CV [%]	Color
151	186	166	14,823.2	1,625.77	1,214.5	73	3.6	Blue

Assay Class: High Sensitivity DNA Assay
 Data Path: C:\...ents and Settings\Bioanalyzer\2013-10-10\2013-10-10_004.xad

Created: 10/10/2013 4:40:31 PM
 Modified: 10/10/2013 5:33:04 PM

Electropherogram Summary Continued ...



Overall Results for sample 2 : SR 8 cDNA Lib

Number of peaks found: 9 Corr. Area 1: 1,461.2
 Noise: 0.2

Peak table for sample 2 : SR 8 cDNA Lib

Peak	Size [bp]	Conc. [pg/μl]	Molarity [pmol/l]	Observations
1	35	125.00	5,411.3	Lower Marker
2	144	28.32	297.2	
3	161	1,723.02	16,251.0	
4	207	14.64	107.0	
5	220	5.21	35.8	
6	228	12.76	84.7	
7	254	7.84	46.8	
8	390	19.92	77.4	
9	709	19.81	42.3	
10	3,342	236.33	107.2	
11	10,380	75.00	10.9	Upper Marker

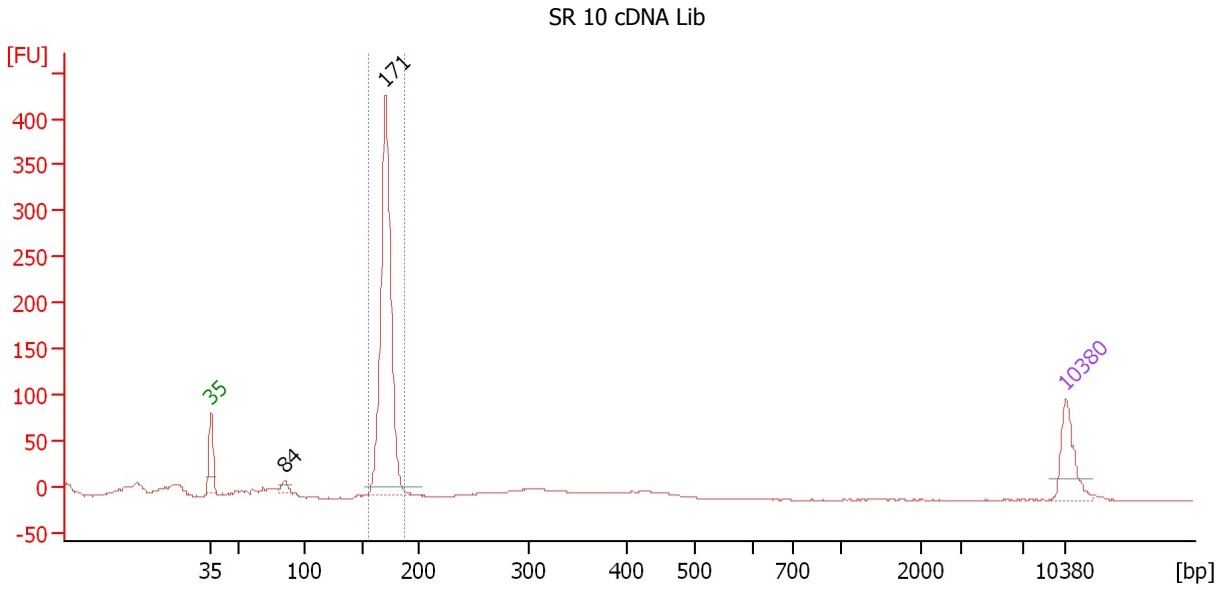
Region table for sample 2 : SR 8 cDNA Lib

From [bp]	To [bp]	Average Size [bp]	Molarity [pmol/l]	Conc. [pg/μl]	Corr. Area	% of Total	Size distribution in CV [%]	Color
147	179	162	15,438.2	1,652.91	1,461.2	72	3.0	Blue

Assay Class: High Sensitivity DNA Assay
 Data Path: C:\...ents and Settings\Bioanalyzer\2013-10-10\2013-10-10_004.xad

Created: 10/10/2013 4:40:31 PM
 Modified: 10/10/2013 5:33:04 PM

Electropherogram Summary Continued ...



Setpoint Deviations for sample 3 : SR 10 cDNA Lib

Height Threshold [FU] : 10

Overall Results for sample 3 : SR 10 cDNA Lib

Number of peaks found: 2 Corr. Area 1: 767.8
 Noise: 0.2

Peak table for sample 3 : SR 10 cDNA Lib

Peak	Size [bp]	Conc. [pg/μl]	Molarity [pmol/l]	Observations
1	35	125.00	5,411.3	Lower Marker
2	84	25.38	458.4	
3	171	875.57	7,763.4	
4	10,380	75.00	10.9	Upper Marker

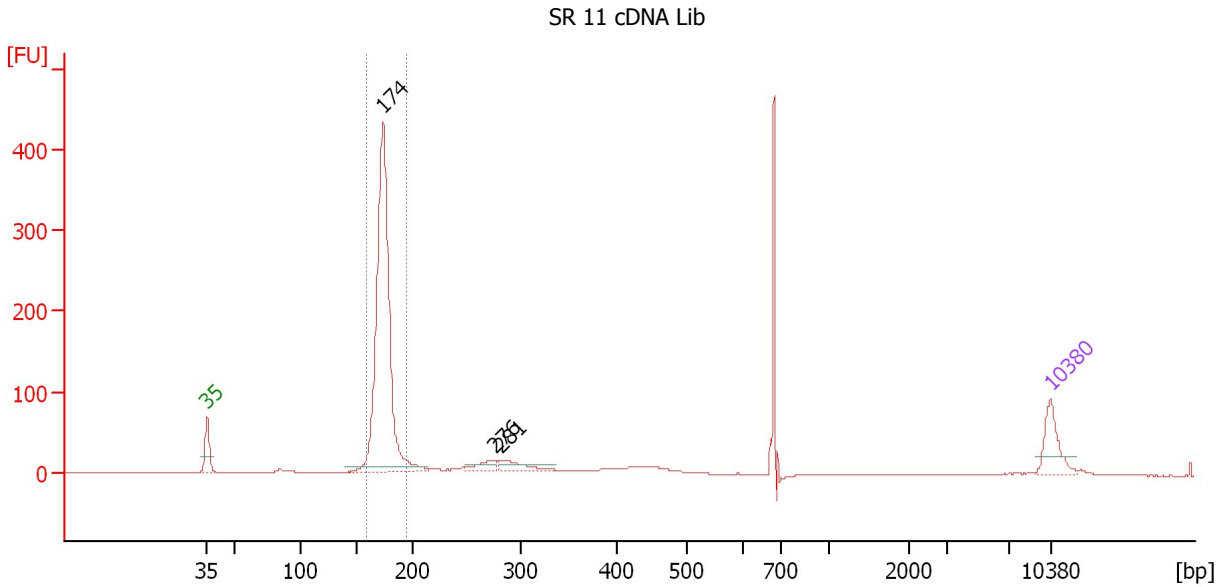
Region table for sample 3 : SR 10 cDNA Lib

From [bp]	To [bp]	Average Size [bp]	Molarity [pmol/l]	Conc. [pg/μl]	Corr. Area	% of Total	Size distribution in CV [%]	Color
156	187	172	7,636.6	864.57	767.8	74	2.7	Blue

Assay Class: High Sensitivity DNA Assay
 Data Path: C:\...ents and Settings\Bioanalyzer\2013-10-10\2013-10-10_004.xad

Created: 10/10/2013 4:40:31 PM
 Modified: 10/10/2013 5:33:04 PM

Electropherogram Summary Continued ...



Setpoint Deviations for sample 4 : SR 11 cDNA Lib

Height Threshold [FU] : 7

Overall Results for sample 4 : SR 11 cDNA Lib

Number of peaks found: 3 Corr. Area 1: 931.3
 Noise: 0.2

Peak table for sample 4 : SR 11 cDNA Lib

Peak	Size [bp]	Conc. [pg/μl]	Molarity [pmol/l]	Observations
1	35	125.00	5,411.3	Lower Marker
2	174	1,213.70	10,550.4	
3	276	41.69	228.8	
4	281	52.05	280.2	
5	10,380	75.00	10.9	Upper Marker

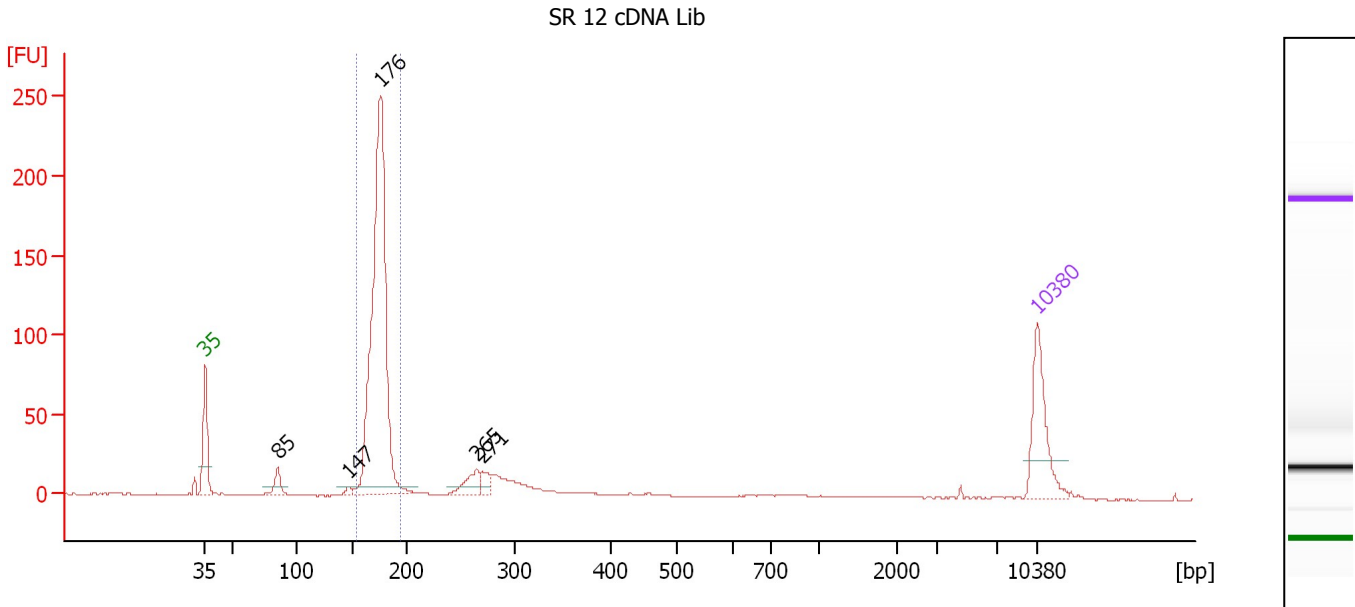
Region table for sample 4 : SR 11 cDNA Lib

From [bp]	To [bp]	Average Size [bp]	Molarity [pmol/l]	Conc. [pg/μl]	Corr. Area	% of Total	Size distribution in CV [%]	Color
160	196	174	10,197.7	1,174.08	931.3	67	3.4	Blue

Assay Class: High Sensitivity DNA Assay
 Data Path: C:\...ents and Settings\Bioanalyzer\2013-10-10\2013-10-10_004.xad

Created: 10/10/2013 4:40:31 PM
 Modified: 10/10/2013 5:33:04 PM

Electropherogram Summary Continued ...



Overall Results for sample 5 : SR 12 cDNA Lib

Number of peaks found: 5 Corr. Area 1: 591.2
 Noise: 0.2

Peak table for sample 5 : SR 12 cDNA Lib

Peak	Size [bp]	Conc. [pg/μl]	Molarity [pmol/l]	Observations
1	35	125.00	5,411.3	Lower Marker
2	85	27.74	495.1	
3	147	7.46	77.1	
4	176	654.33	5,637.8	
5	265	33.10	189.2	
6	271	19.39	108.6	
7	10,380	75.00	10.9	Upper Marker

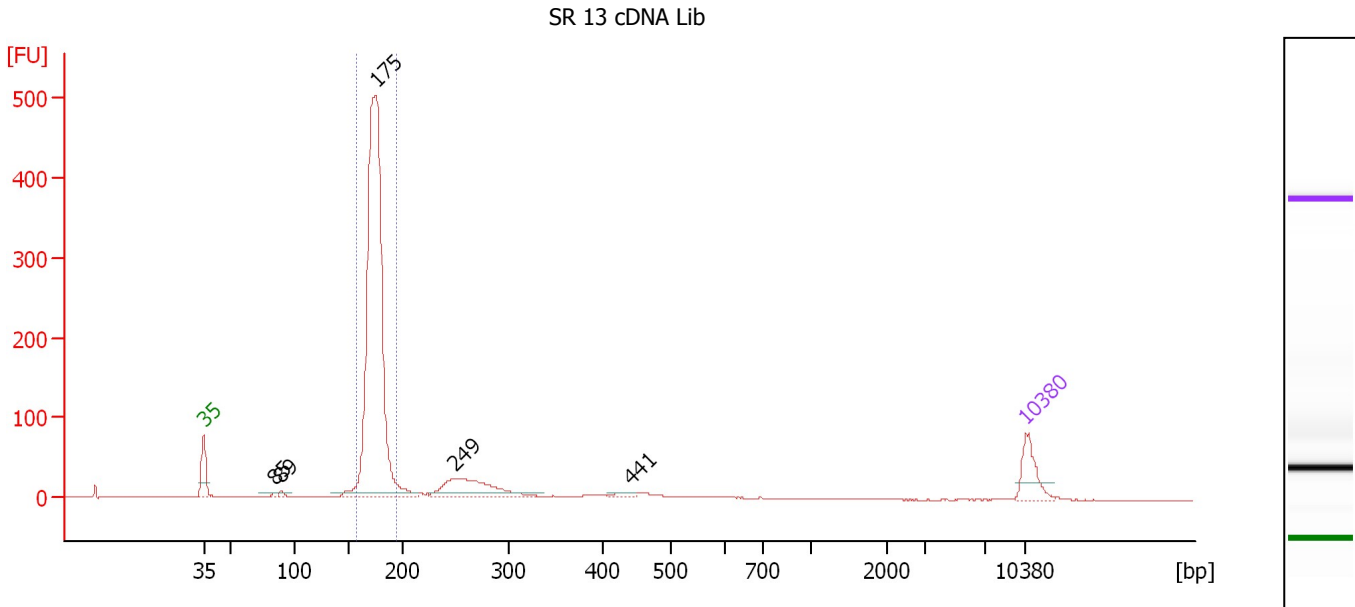
Region table for sample 5 : SR 12 cDNA Lib

From [bp]	To [bp]	Average Size [bp]	Molarity [pmol/l]	Conc. [pg/μl]	Corr. Area	% of Total	Size distribution in CV [%]	Color
154	194	174	5,697.8	654.06	591.2	72	3.6	Blue

Assay Class: High Sensitivity DNA Assay
 Data Path: C:\...ents and Settings\Bioanalyzer\2013-10-10\2013-10-10_004.xad

Created: 10/10/2013 4:40:31 PM
 Modified: 10/10/2013 5:33:04 PM

Electropherogram Summary Continued ...



Overall Results for sample 6 : SR 13 cDNA Lib

Number of peaks found: 5 Corr. Area 1: 1,313.8
 Noise: 0.1

Peak table for sample 6 : SR 13 cDNA Lib

Peak	Size [bp]	Conc. [pg/μl]	Molarity [pmol/l]	Observations
1	35	125.00	5,411.3	Lower Marker
2	85	12.89	230.5	
3	89	13.55	229.9	
4	175	1,825.99	15,777.2	
5	249	227.46	1,381.3	
6	441	16.31	56.0	
7	10,380	75.00	10.9	Upper Marker

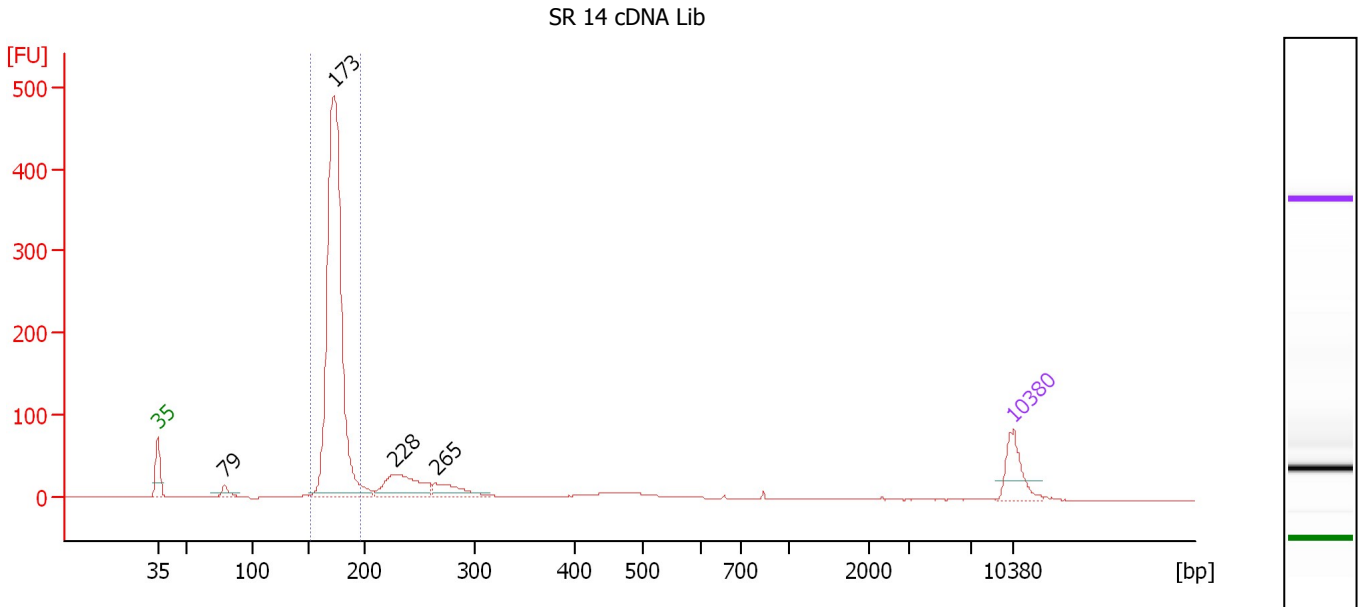
Region table for sample 6 : SR 13 cDNA Lib

From [bp]	To [bp]	Average Size [bp]	Molarity [pmol/l]	Conc. [pg/μl]	Corr. Area	% of Total	Size distribution in CV [%]	Color
157	194	174	15,452.2	1,774.60	1,313.8	75	3.5	Blue

Assay Class: High Sensitivity DNA Assay
 Data Path: C:\...ents and Settings\Bioanalyzer\2013-10-10\2013-10-10_004.xad

Created: 10/10/2013 4:40:31 PM
 Modified: 10/10/2013 5:33:04 PM

Electropherogram Summary Continued ...



Overall Results for sample 7 : SR 14 cDNA Lib

Number of peaks found: 4 Corr. Area 1: 1,197.4
 Noise: 0.1

Peak table for sample 7 : SR 14 cDNA Lib

Peak	Size [bp]	Conc. [pg/μl]	Molarity [pmol/l]	Observations
1	35	125.00	5,411.3	Lower Marker
2	79	34.50	661.6	
3	173	1,527.51	13,413.8	
4	228	180.48	1,201.8	
5	265	81.30	465.3	
6	10,380	75.00	10.9	Upper Marker

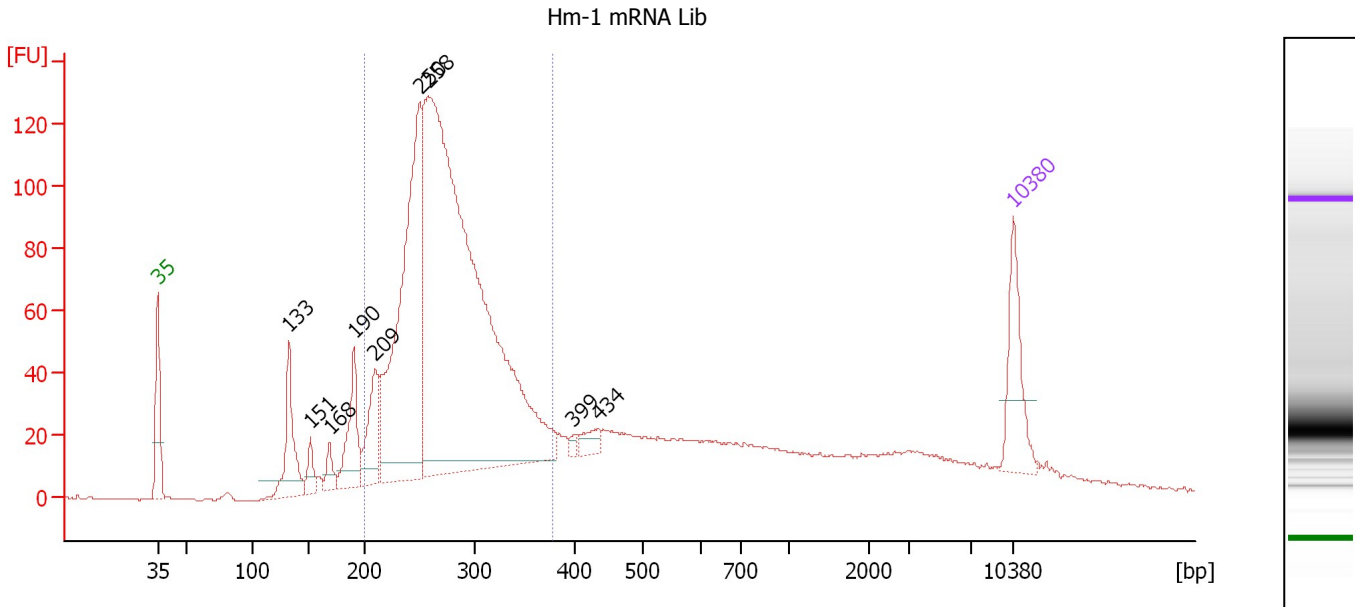
Region table for sample 7 : SR 14 cDNA Lib

From [bp]	To [bp]	Average Size [bp]	Molarity [pmol/l]	Conc. [pg/μl]	Corr. Area	% of Total	Size distribution in CV [%]	Color
152	195	173	13,127.6	1,500.32	1,197.4	73	3.6	Blue

Assay Class: High Sensitivity DNA Assay
 Data Path: C:\...ents and Settings\Bioanalyzer\2013-10-10\2013-10-10_004.xad

Created: 10/10/2013 4:40:31 PM
 Modified: 10/10/2013 5:33:04 PM

Electropherogram Summary Continued ...



Overall Results for sample 8 : Hm-1 mRNA Lib

Number of peaks found: 9 Corr. Area 1: 1,539.3
 Noise: 0.2

Peak table for sample 8 : Hm-1 mRNA Lib

Peak	Size [bp]	Conc. [pg/μl]	Molarity [pmol/l]	Observations
1	35	125.00	5,411.3	Lower Marker
2	133	119.36	1,364.2	
3	151	27.60	276.6	
4	168	26.43	237.7	
5	190	101.54	808.5	
6	209	94.99	687.8	
7	250	547.36	3,322.3	
8	258	1,421.83	8,353.0	
9	399	7.36	27.9	
10	434	20.21	70.5	
11	10,380	75.00	10.9	Upper Marker

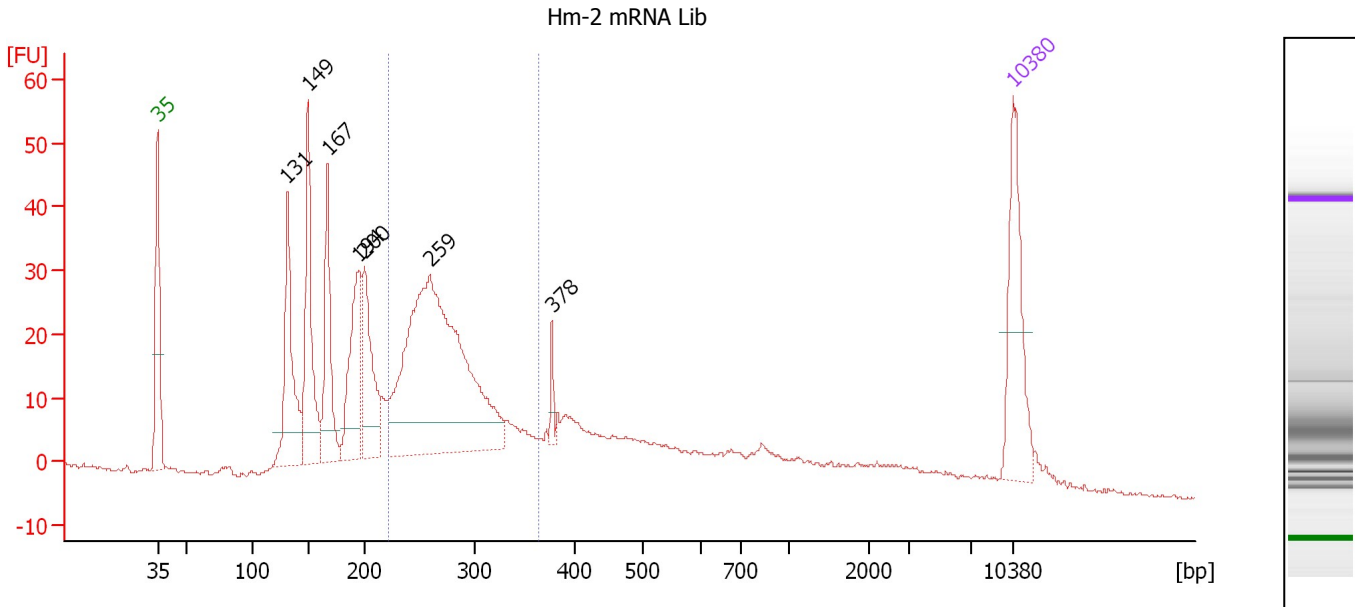
Region table for sample 8 : Hm-1 mRNA Lib

From [bp]	To [bp]	Average Size [bp]	Molarity [pmol/l]	Conc. [pg/μl]	Corr. Area	% of Total	Size distribution in CV [%]	Color
200	379	277	12,339.8	2,208.83	1,539.3	65	14.4	Blue

Assay Class: High Sensitivity DNA Assay
 Data Path: C:\...ents and Settings\Bioanalyzer\2013-10-10\2013-10-10_004.xad

Created: 10/10/2013 4:40:31 PM
 Modified: 10/10/2013 5:33:04 PM

Electropherogram Summary Continued ...



Overall Results for sample 9 : Hm-2 mRNA Lib

Number of peaks found: 7 Corr. Area 1: 315.0
 Noise: 0.3

Peak table for sample 9 : Hm-2 mRNA Lib

Peak	Size [bp]	Conc. [pg/μl]	Molarity [pmol/l]	Observations
1	35	125.00	5,411.3	Lower Marker
2	131	135.64	1,569.3	
3	149	138.19	1,403.1	
4	167	101.22	920.4	
5	194	111.50	869.6	
6	200	102.30	775.4	
7	259	459.66	2,690.6	
8	378	11.72	47.0	
9	10,380	75.00	10.9	Upper Marker

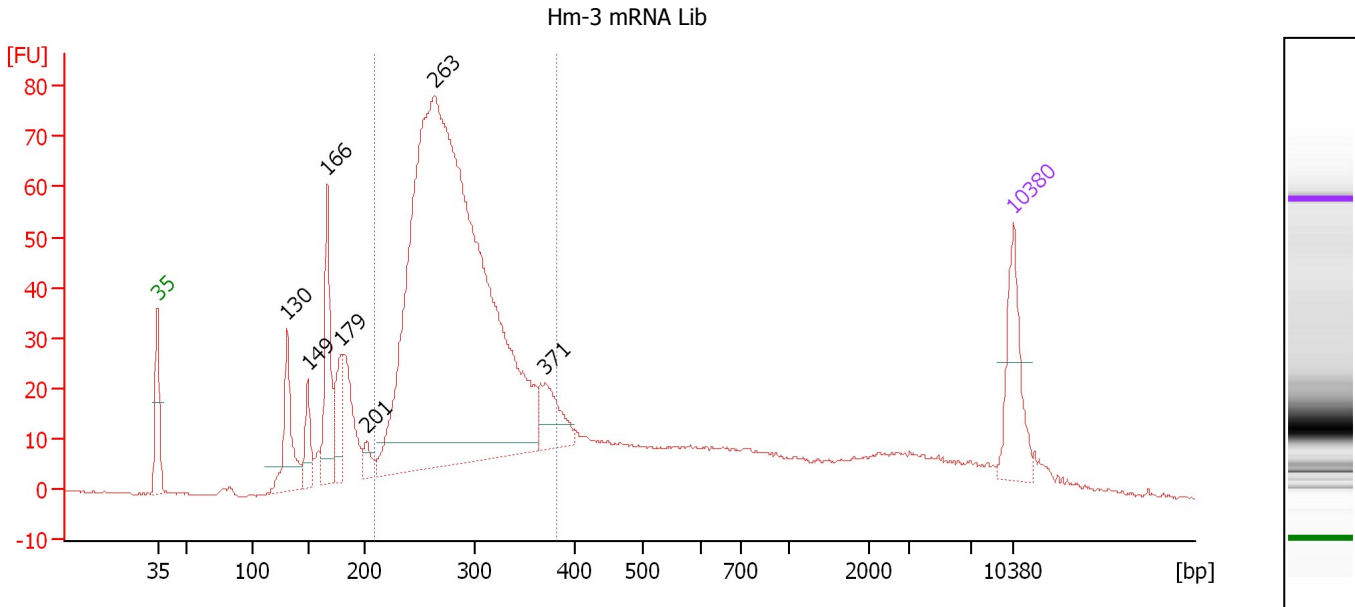
Region table for sample 9 : Hm-2 mRNA Lib

From [bp]	To [bp]	Average Size [bp]	Molarity [pmol/l]	Conc. [pg/μl]	Corr. Area	% of Total	Size distribution in CV [%]	Color
221	364	277	3,357.8	604.13	315.0	37	12.4	Blue

Assay Class: High Sensitivity DNA Assay
 Data Path: C:\...ents and Settings\Bioanalyzer\2013-10-10\2013-10-10_004.xad

Created: 10/10/2013 4:40:31 PM
 Modified: 10/10/2013 5:33:04 PM

Electropherogram Summary Continued ...



Overall Results for sample 10 : Hm-3 mRNA Lib

Number of peaks found: 7 Corr. Area 1: 912.9
 Noise: 0.2

Peak table for sample 10 : Hm-3 mRNA Lib

Peak	Size [bp]	Conc. [pg/μl]	Molarity [pmol/l]	Observations
1	35	125.00	5,411.3	Lower Marker
2	130	117.84	1,368.3	
3	149	50.93	518.5	
4	166	142.42	1,297.5	
5	179	73.55	623.8	
6	201	20.87	157.1	
7	263	1,708.76	9,838.3	
8	371	68.84	281.2	
9	10,380	75.00	10.9	Upper Marker

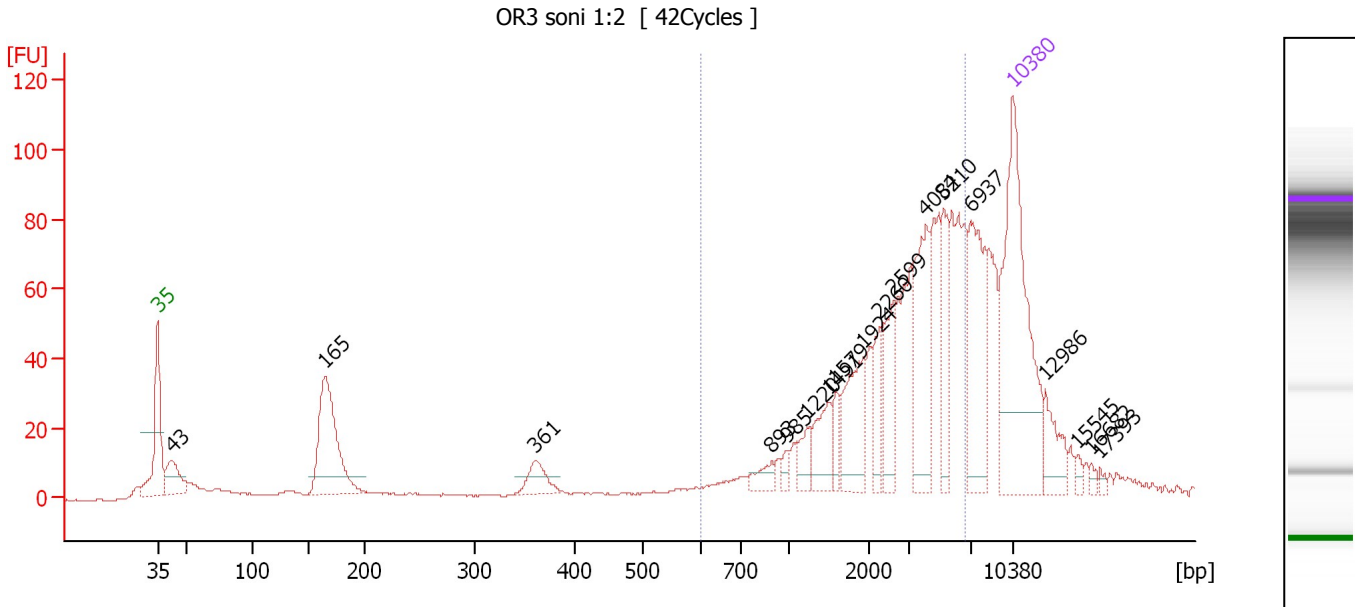
Region table for sample 10 : Hm-3 mRNA Lib

From [bp]	To [bp]	Average Size [bp]	Molarity [pmol/l]	Conc. [pg/μl]	Corr. Area	% of Total	Size distribution in CV [%]	Color
209	383	286	10,640.7	1,970.64	912.9	60	13.7	Blue

Assay Class: High Sensitivity DNA Assay
 Data Path: C:\...ents and Settings\Bioanalyzer\2013-10-10\2013-10-10_004.xad

Created: 10/10/2013 4:40:31 PM
 Modified: 10/10/2013 5:33:04 PM

Electropherogram Summary Continued ...



Overall Results for sample 11 : OR3 soni 1:2

Number of peaks found: 18 Corr. Area 1: 695.1
 Noise: 0.2

Peak table for sample 11 : OR3 soni 1:2

Peak	Size [bp]	Conc. [pg/μl]	Molarity [pmol/l]	Observations
1	35	125.00	5,411.3	Lower Marker
2	43	20.67	736.4	
3	165	66.57	613.2	
4	361	11.94	50.1	
5	893	5.87	10.0	
6	985	3.18	4.9	
7	1,220	7.06	8.8	
8	1,491	15.12	15.4	
9	1,579	6.57	6.3	
10	1,924	25.30	19.9	
11	2,260	12.29	8.2	
12	2,599	17.21	10.0	
13	4,084	34.50	12.8	
14	5,210	18.43	5.4	
15	6,937	38.91	8.5	
16	10,380	75.00	10.9	Upper Marker
17	12,986	0.00	0.0	
18	15,545	0.00	0.0	
19	16,682	0.00	0.0	
20	17,393	0.00	0.0	

Region table for sample 11 : OR3 soni 1:2

From [bp]	To [bp]	Average Size [bp]	Molarity [pmol/l]	Conc. [pg/μl]	Corr. Area	% of Total	Size distribution in CV [%]	Color
600	6,652	3,335	170.7	262.39	695.1	61	50.9	Blue

Assay Class: High Sensitivity DNA Assay
Data Path: C:\...ents and Settings\Bioanalyzer\2013-10-10\2013-10-10_004.xad

Created: 10/10/2013 4:40:31 PM
Modified: 10/10/2013 5:33:04 PM

Gel Image

