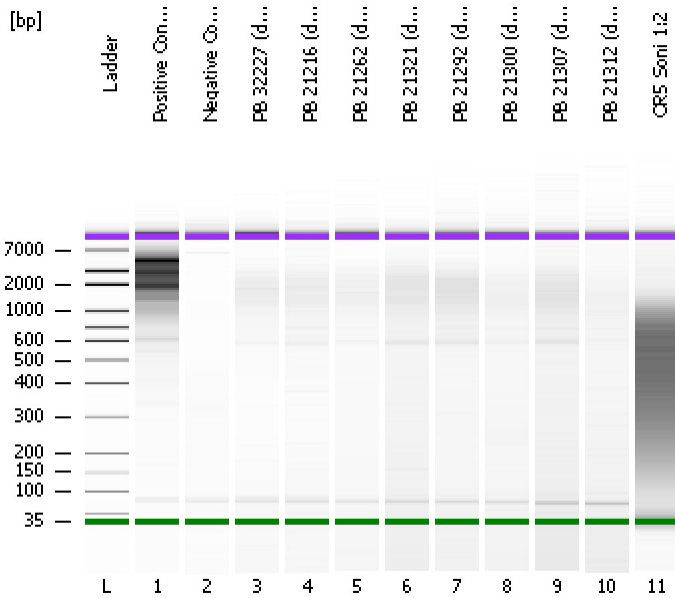


Assay Class: High Sensitivity DNA Assay
Data Path: C:\...ents and Settings\Bioanalyzer\2013-10-11\2013-10-11_003.xad

Created: 10/11/2013 11:39:05 AM
Modified: 10/11/2013 12:25:19 PM

Electrophoresis File Run Summary



Instrument Information:

Instrument Name: DE13701086 Firmware: C.01.069
Serial#: DE13701086 Type: G2938B

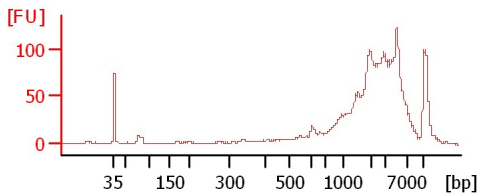
Assay Information:

Assay Origin Path: C:\Program Files\Agilent\2100 bioanalyzer\2100 expert\assays\dsDNA\High Sensitivity DNA.xsy
Assay Class: High Sensitivity DNA Assay
Version: 1.03
Assay Comments: Copyright © 2003-2010 Agilent Technologies

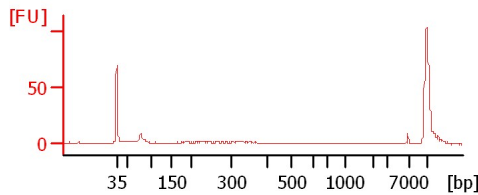
Chip Information:

Chip Lot #:
Reagent Kit Lot #:
Chip Comments:

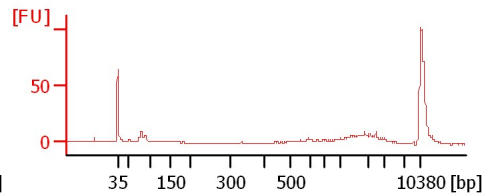
Positive Control (ds cDNA)



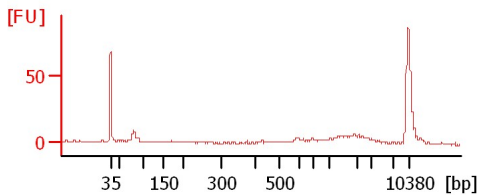
Negative Control (ds cDNA)



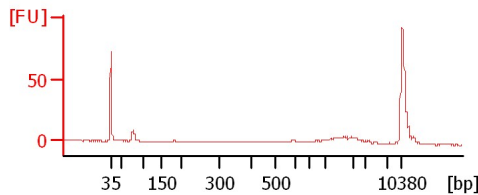
PB 32227 (ds cDNA)



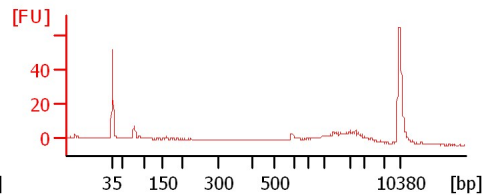
PB 21216 (ds cDNA)



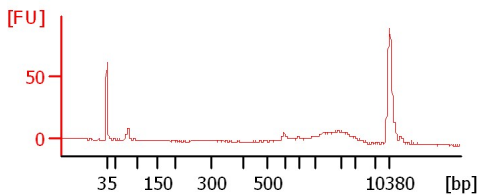
PB 21262 (ds cDNA)



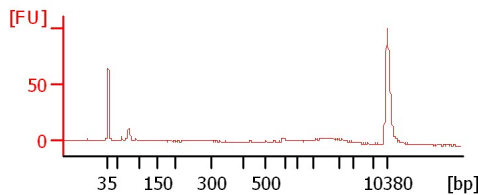
PB 21321 (ds cDNA)



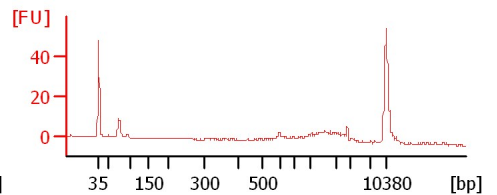
PB 21292 (ds cDNA)



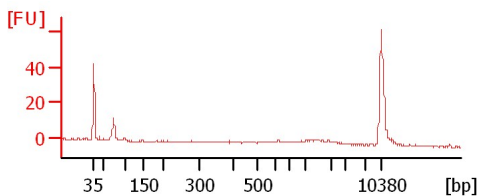
PB 21300 (ds cDNA)



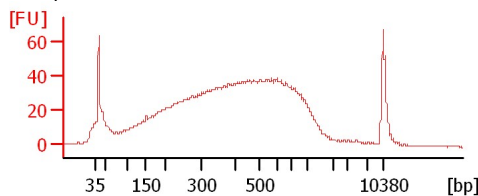
PB 21307 (ds cDNA)



PB 21312 (ds cDNA)



OR5 Soni 1:2



Assay Class: High Sensitivity DNA Assay
Data Path: C:\...ents and Settings\Bioanalyzer\2013-10-11\2013-10-11_003.xad

Created: 10/11/2013 11:39:05 AM
Modified: 10/11/2013 12:25:19 PM

Electrophoresis File Run Summary (Chip Summary)

Sample Name	Sample Comment	Rest. Digest	Status	Observation	Result Label	Result Color
Positive Control (ds cDNA)		<input type="checkbox"/>	✓			
Negative Control (ds cDNA)		<input type="checkbox"/>	✓			
PB 32227 (ds cDNA)		<input type="checkbox"/>	✓			
PB 21216 (ds cDNA)		<input type="checkbox"/>	✓			
PB 21262 (ds cDNA)		<input type="checkbox"/>	✓			
PB 21321 (ds cDNA)		<input type="checkbox"/>	✓			
PB 21292 (ds cDNA)		<input type="checkbox"/>	✓			
PB 21300 (ds cDNA)		<input type="checkbox"/>	✓			
PB 21307 (ds cDNA)		<input type="checkbox"/>	✓			
PB 21312 (ds cDNA)		<input type="checkbox"/>	✓			
OR5 Soni 1:2	10Cycles	<input type="checkbox"/>	✓			
Ladder		<input type="checkbox"/>	✓			

Chip Lot #

Reagent Kit Lot #

Chip Comments :

Assay Class: High Sensitivity DNA Assay
Data Path: C:\...ents and Settings\Bioanalyzer\2013-10-11\2013-10-11_003.xad

Created: 10/11/2013 11:39:05 AM
Modified: 10/11/2013 12:25:19 PM

Electrophoresis Assay Details

General Analysis Settings

Number of Available Sample and Ladder Wells (Max.) : 12
Minimum Visible Range [s] : 32
Maximum Visible Range [s] : 138
Start Analysis Time Range [s] : 33
End Analysis Time Range [s] : 137.5
Ladder Concentration [pg/μl] : 1950
Uses Standard Area for Ladder Fragments
Lower Marker Concentration [pg/μl] : 125
Upper Marker Concentration [pg/μl] : 75
Used Upper Marker for Quantitation
Standard Curve Fit is Point to Point
Show Data Aligned to Lower and Upper Marker

Integrator Settings

Integration Start Time [s] : 33.05
Integration End Time [s] : 137
Slope Threshold : 0.8
Height Threshold [FU] : 5
Area Threshold : 0.1
Width Threshold [s] : 0.6
Baseline Plateau [s] : 0.5

Filter Settings

Filter Width [s] : 0.5
Polynomial Order : 4

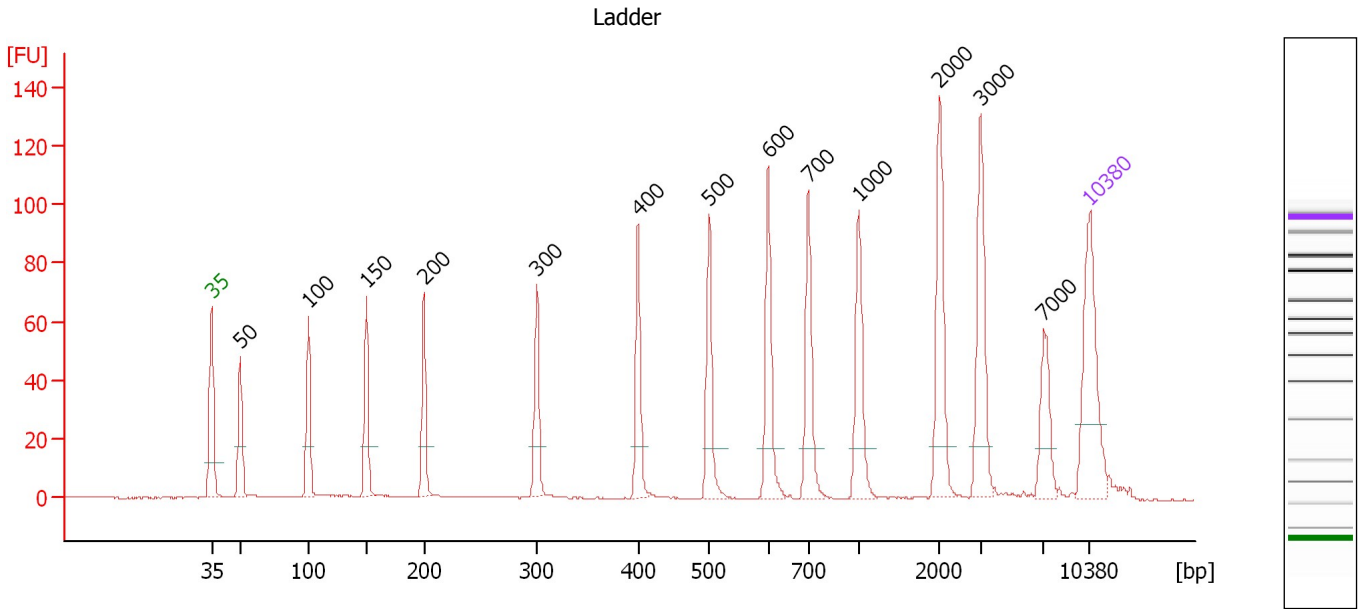
Ladder

Ladder Peak	Size	Area
1	35	160
2	50	210
3	100	208
4	150	221
5	200	242
6	300	270
7	400	305
8	500	306
9	600	336
10	700	321
11	1000	366
12	2000	413
13	3000	411
14	7000	400
15	10380	214

Assay Class: High Sensitivity DNA Assay
 Data Path: C:\...ents and Settings\Bioanalyzer\2013-10-11\2013-10-11_003.xad

Created: 10/11/2013 11:39:05 AM
 Modified: 10/11/2013 12:25:19 PM

Electropherogram Summary



Overall Results for Ladder

Noise: 0.1

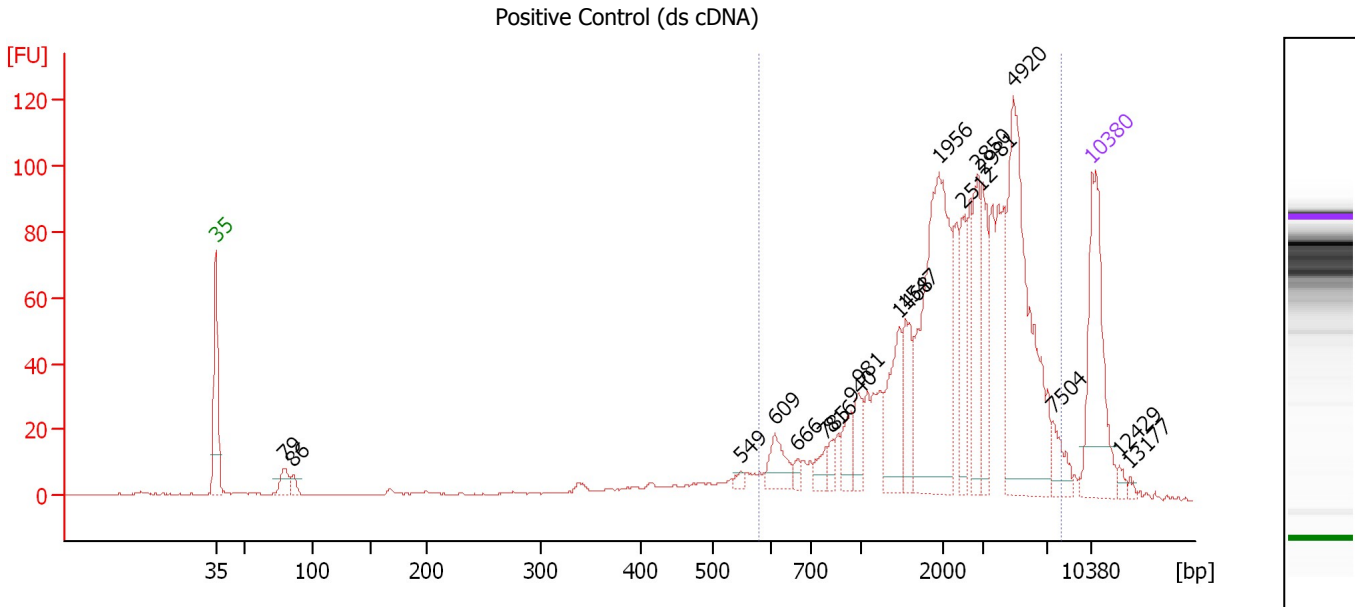
Peak table for Ladder

Peak	Size [bp]	Conc. [pg/μl]	Molarity [pmol/l]	Observations
1	35	125.00	5,411.3	Lower Marker
2	50	150.00	4,545.5	Ladder Peak
3	100	150.00	2,272.7	Ladder Peak
4	150	150.00	1,515.2	Ladder Peak
5	200	150.00	1,136.4	Ladder Peak
6	300	150.00	757.6	Ladder Peak
7	400	150.00	568.2	Ladder Peak
8	500	150.00	454.5	Ladder Peak
9	600	150.00	378.8	Ladder Peak
10	700	150.00	324.7	Ladder Peak
11	1,000	150.00	227.3	Ladder Peak
12	2,000	150.00	113.6	Ladder Peak
13	3,000	150.00	75.8	Ladder Peak
14	7,000	150.00	32.5	Ladder Peak
15	10,380	75.00	10.9	Upper Marker

Assay Class: High Sensitivity DNA Assay
 Data Path: C:\...ents and Settings\Bioanalyzer\2013-10-11\2013-10-11_003.xad

Created: 10/11/2013 11:39:05 AM
 Modified: 10/11/2013 12:25:19 PM

Electropherogram Summary Continued ...



Overall Results for sample 1 : Positive Control (ds cDNA)

Number of peaks found: 19 Corr. Area 1: 1,202.3
 Noise: 0.2

Peak table for sample 1 : Positive Control (ds cDNA)

Peak	Size [bp]	Conc. [pg/μl]	Molarity [pmol/l]	Observations
1	35	125.00	5,411.3	Lower Marker
2	79	17.55	334.8	
3	86	8.29	146.5	
4	549	3.83	10.6	
5	609	23.30	58.0	
6	666	5.31	12.1	
7	785	11.06	21.4	
8	816	7.21	13.4	
9	940	16.97	27.4	
10	981	18.20	28.1	
11	1,468	44.04	45.5	
12	1,547	30.47	29.8	
13	1,956	155.02	120.1	
14	2,512	29.94	18.1	
15	2,850	40.27	21.4	
16	2,981	36.05	18.3	
17	4,920	156.11	48.1	
18	7,504	16.00	3.2	
19	10,380	75.00	10.9	Upper Marker
20	12,429	0.00	0.0	
21	13,177	0.00	0.0	

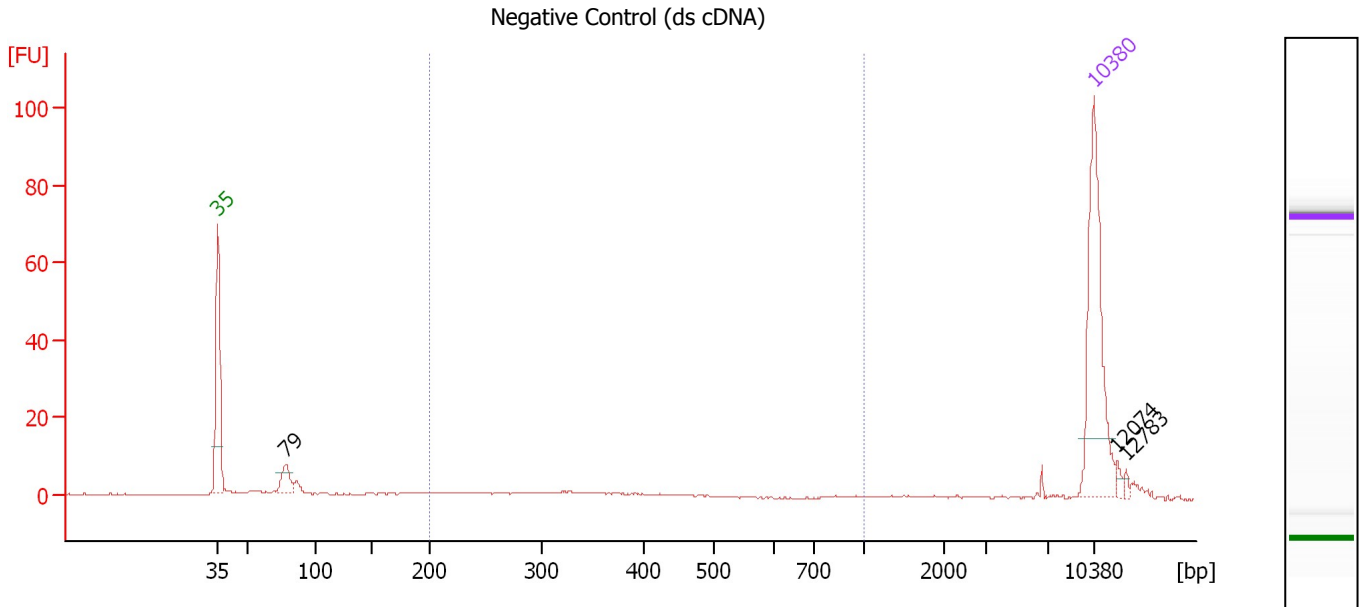
Region table for sample 1 : Positive Control (ds cDNA)

From [bp]	To [bp]	Average Size [bp]	Molarity [pmol/l]	Conc. [pg/μl]	Corr. Area	% of Total	Size distribution in CV [%]	Color
578	8,148	2,930	650.9	805.84	1,202.3	88	59.9	Blue

Assay Class: High Sensitivity DNA Assay
 Data Path: C:\...ents and Settings\Bioanalyzer\2013-10-11\2013-10-11_003.xad

Created: 10/11/2013 11:39:05 AM
 Modified: 10/11/2013 12:25:19 PM

Electropherogram Summary Continued ...



Overall Results for sample 2 : Negative Control (ds cDNA)

Number of peaks found: 3 Corr. Area 1: 23.2
 Noise: 0.2

Peak table for sample 2 : Negative Control (ds cDNA)

Peak	Size [bp]	Conc. [pg/μl]	Molarity [pmol/l]	Observations
1	35	125.00	5,411.3	Lower Marker
2	79	17.24	332.1	
3	10,380	75.00	10.9	Upper Marker
4	12,074	0.00	0.0	
5	12,783	0.00	0.0	

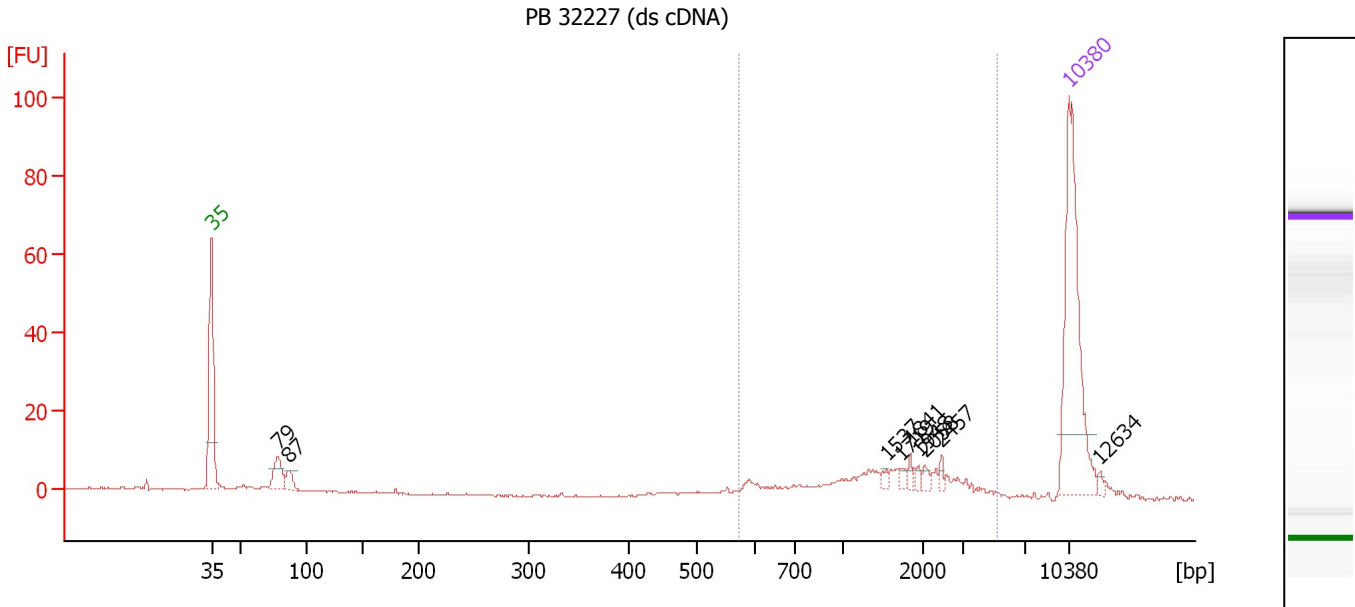
Region table for sample 2 : Negative Control (ds cDNA)

From [bp]	To [bp]	Average Size [bp]	Molarity [pmol/l]	Conc. [pg/μl]	Corr. Area	% of Total	Size distribution in CV [%]	Color
200	1,000	332	125.4	24.65	23.2	30	35.5	Blue

Assay Class: High Sensitivity DNA Assay
 Data Path: C:\...ents and Settings\Bioanalyzer\2013-10-11\2013-10-11_003.xad

Created: 10/11/2013 11:39:05 AM
 Modified: 10/11/2013 12:25:19 PM

Electropherogram Summary Continued ...



Overall Results for sample 3 : PB 32227 (ds cDNA)

Number of peaks found: 9 Corr. Area 1: 96.7
 Noise: 0.2

Peak table for sample 3 : PB 32227 (ds cDNA)

Peak	Size [bp]	Conc. [pg/μl]	Molarity [pmol/l]	Observations
1	35	125.00	5,411.3	Lower Marker
2	79	18.78	362.3	
3	87	8.44	146.5	
4	1,537	2.10	2.1	
5	1,719	2.51	2.2	
6	1,841	2.49	2.0	
7	1,948	2.22	1.7	
8	2,058	2.44	1.8	
9	2,457	2.15	1.3	
10	10,380	75.00	10.9	Upper Marker
11	12,634	0.00	0.0	

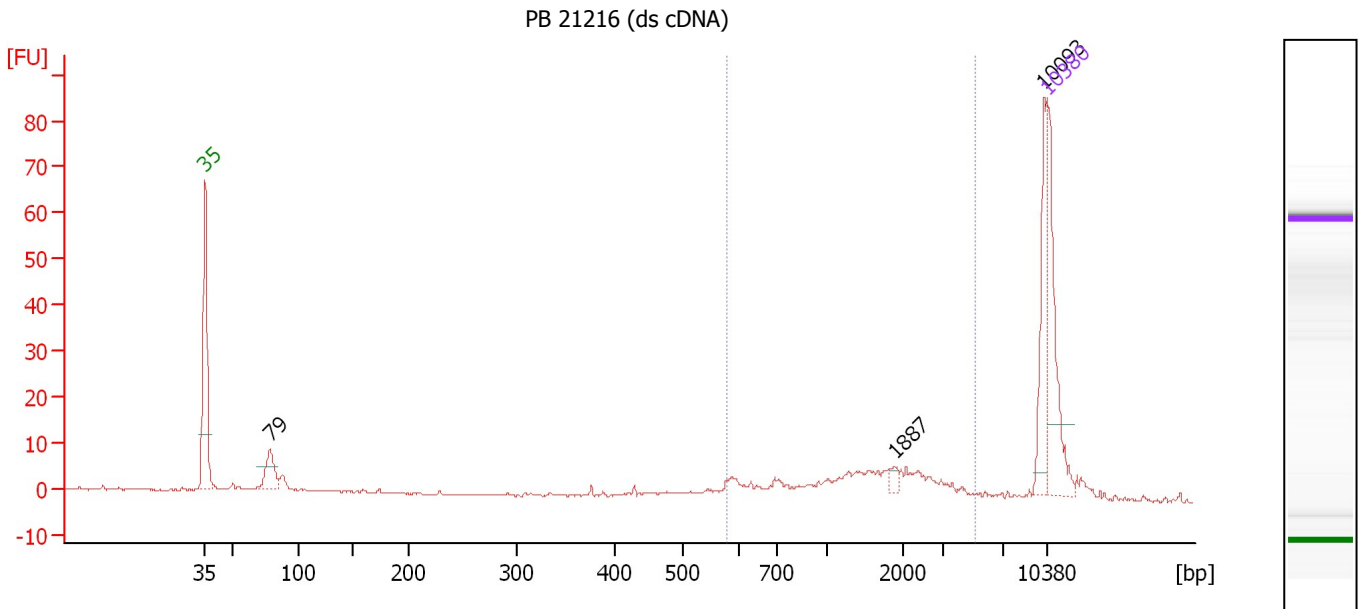
Region table for sample 3 : PB 32227 (ds cDNA)

From [bp]	To [bp]	Average Size [bp]	Molarity [pmol/l]	Conc. [pg/μl]	Corr. Area	% of Total	Size distribution in CV [%]	Color
571	5,256	1,716	83.9	68.99	96.7	63	52.6	Blue

Assay Class: High Sensitivity DNA Assay
 Data Path: C:\...ents and Settings\Bioanalyzer\2013-10-11\2013-10-11_003.xad

Created: 10/11/2013 11:39:05 AM
 Modified: 10/11/2013 12:25:19 PM

Electropherogram Summary Continued ...



Overall Results for sample 4 : PB 21216 (ds cDNA)

Number of peaks found: 3 Corr. Area 1: 78.7
 Noise: 0.2

Peak table for sample 4 : PB 21216 (ds cDNA)

Peak	Size [bp]	Conc. [pg/μl]	Molarity [pmol/l]	Observations
1	35	125.00	5,411.3	Lower Marker
2	79	40.15	774.1	
3	1,887	6.62	5.3	
4	10,093	55.19	8.3	
5	10,380	75.00	10.9	Upper Marker

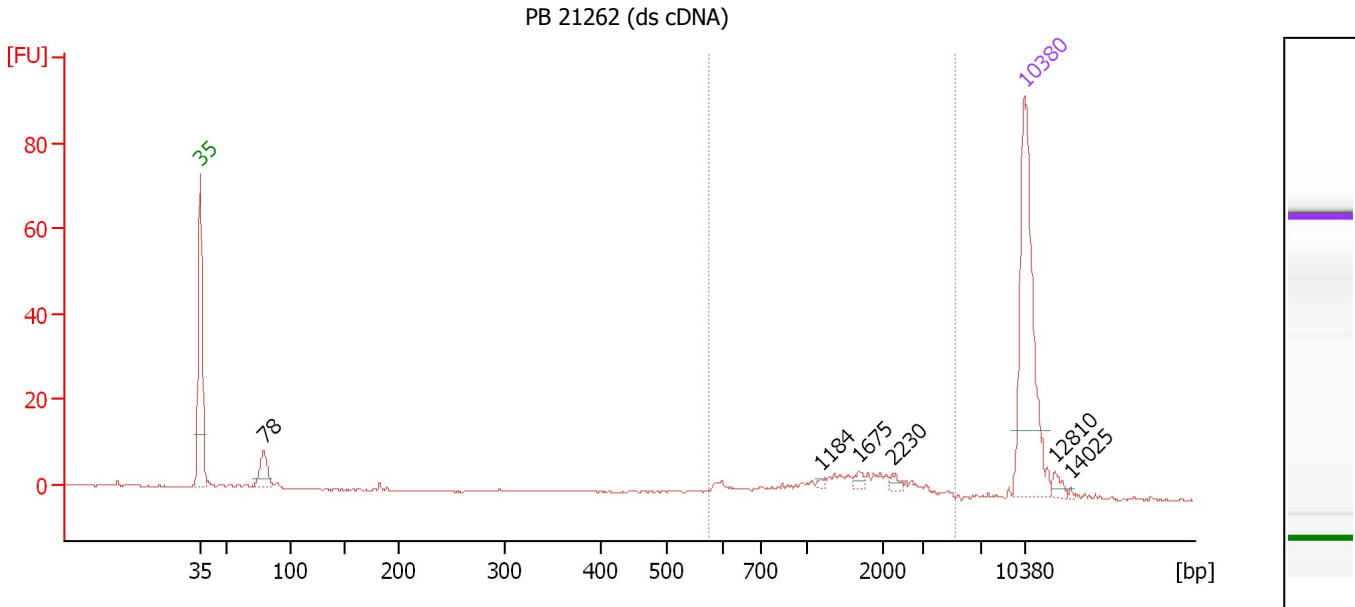
Region table for sample 4 : PB 21216 (ds cDNA)

From [bp]	To [bp]	Average Size [bp]	Molarity [pmol/l]	Conc. [pg/μl]	Corr. Area	% of Total	Size distribution in CV [%]	Color
577	5,127	1,651	146.5	114.37	78.7	45	53.5	Blue

Assay Class: High Sensitivity DNA Assay
 Data Path: C:\...ents and Settings\Bioanalyzer\2013-10-11\2013-10-11_003.xad

Created: 10/11/2013 11:39:05 AM
 Modified: 10/11/2013 12:25:19 PM

Electropherogram Summary Continued ...



Setpoint Deviations for sample 5 : PB 21262 (ds cDNA)

Height Threshold [FU] : 2

Overall Results for sample 5 : PB 21262 (ds cDNA)

Number of peaks found: 6 Corr. Area 1: 62.7
 Noise: 0.1

Peak table for sample 5 : PB 21262 (ds cDNA)

Peak	Size [bp]	Conc. [pg/μl]	Molarity [pmol/l]	Observations
1	35	125.00	5,411.3	Lower Marker
2	78	20.07	387.7	
3	1,184	1.33	1.7	
4	1,675	2.84	2.6	
5	2,230	2.57	1.7	
6	10,380	75.00	10.9	Upper Marker
7	12,810	0.00	0.0	
8	14,025	0.00	0.0	

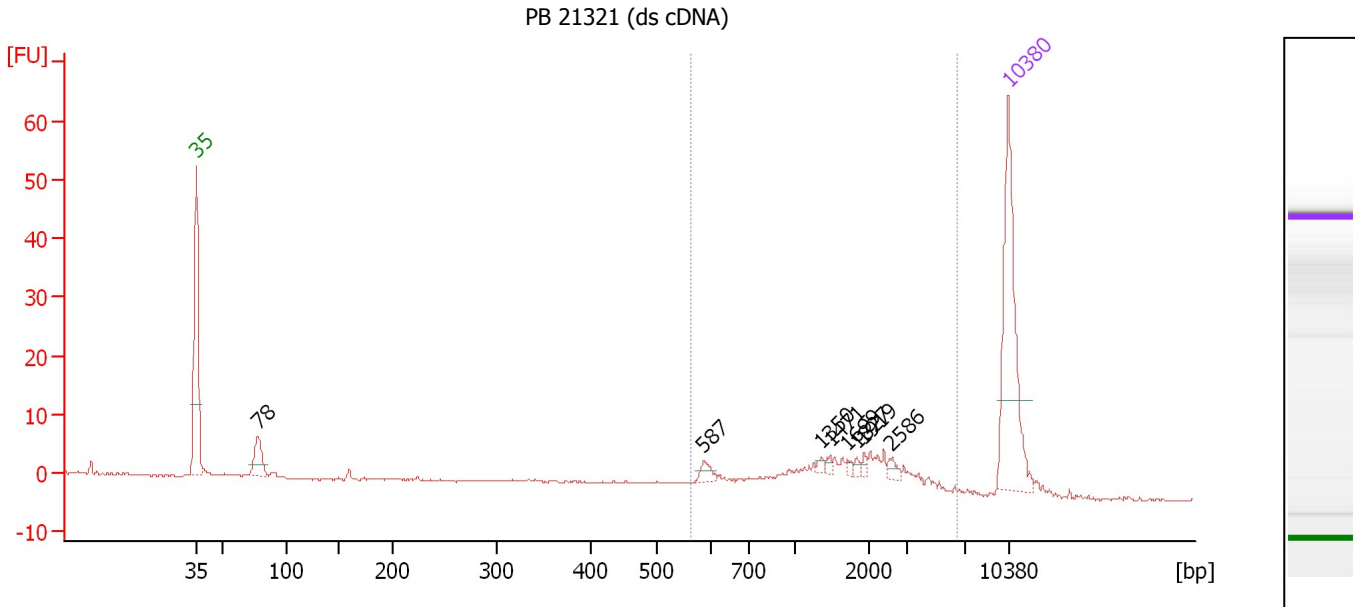
Region table for sample 5 : PB 21262 (ds cDNA)

From [bp]	To [bp]	Average Size [bp]	Molarity [pmol/l]	Conc. [pg/μl]	Corr. Area	% of Total	Size distribution in CV [%]	Color
574	5,247	1,672	60.4	49.21	62.7	63	51.7	Blue

Assay Class: High Sensitivity DNA Assay
 Data Path: C:\...ents and Settings\Bioanalyzer\2013-10-11\2013-10-11_003.xad

Created: 10/11/2013 11:39:05 AM
 Modified: 10/11/2013 12:25:19 PM

Electropherogram Summary Continued ...



Setpoint Deviations for sample 6 : PB 21321 (ds cDNA)

Height Threshold [FU] : 2

Overall Results for sample 6 : PB 21321 (ds cDNA)

Number of peaks found: 8 Corr. Area 1: 83.9
 Noise: 0.2

Peak table for sample 6 : PB 21321 (ds cDNA)

Peak	Size [bp]	Conc. [pg/μl]	Molarity [pmol/l]	Observations
1	35	125.00	5,411.3	Lower Marker
2	78	24.73	483.4	
3	587	6.29	16.3	
4	1,350	1.98	2.2	
5	1,471	2.05	2.1	
6	1,699	1.89	1.7	
7	1,827	1.90	1.6	
8	1,919	2.33	1.8	
9	2,586	3.62	2.1	
10	10,380	75.00	10.9	Upper Marker

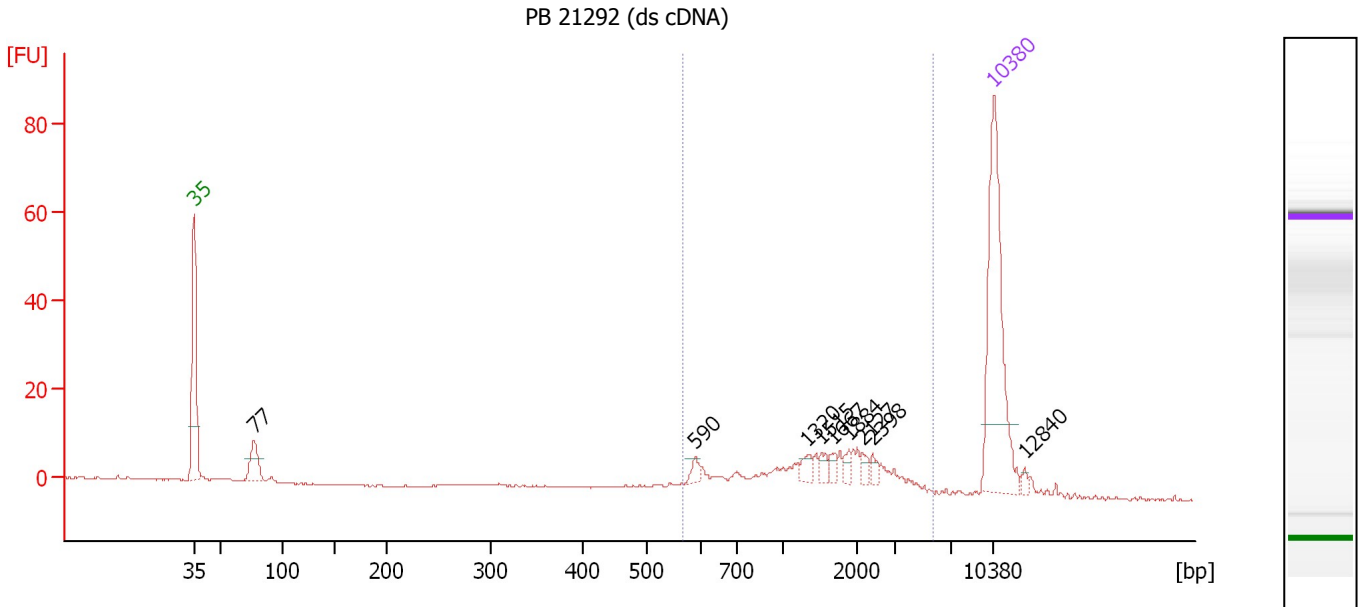
Region table for sample 6 : PB 21321 (ds cDNA)

From [bp]	To [bp]	Average Size [bp]	Molarity [pmol/l]	Conc. [pg/μl]	Corr. Area	% of Total	Size distribution in CV [%]	Color
562	6,422	1,825	129.2	104.87	83.9	63	61.2	Blue

Assay Class: High Sensitivity DNA Assay
 Data Path: C:\...ents and Settings\Bioanalyzer\2013-10-11\2013-10-11_003.xad

Created: 10/11/2013 11:39:05 AM
 Modified: 10/11/2013 12:25:19 PM

Electropherogram Summary Continued ...



Overall Results for sample 7 : PB 21292 (ds cDNA)

Number of peaks found: 9 Corr. Area 1: 123.5
 Noise: 0.1

Peak table for sample 7 : PB 21292 (ds cDNA)

Peak	Size [bp]	Conc. [pg/μl]	Molarity [pmol/l]	Observations
1	35	125.00	5,411.3	Lower Marker
2	77	22.05	431.8	
3	590	4.29	11.0	
4	1,320	5.11	5.9	
5	1,515	3.78	3.8	
6	1,667	3.49	3.2	
7	1,884	3.07	2.5	
8	2,127	3.49	2.5	
9	2,398	3.23	2.0	
10	10,380	75.00	10.9	Upper Marker
11	12,840	0.00	0.0	

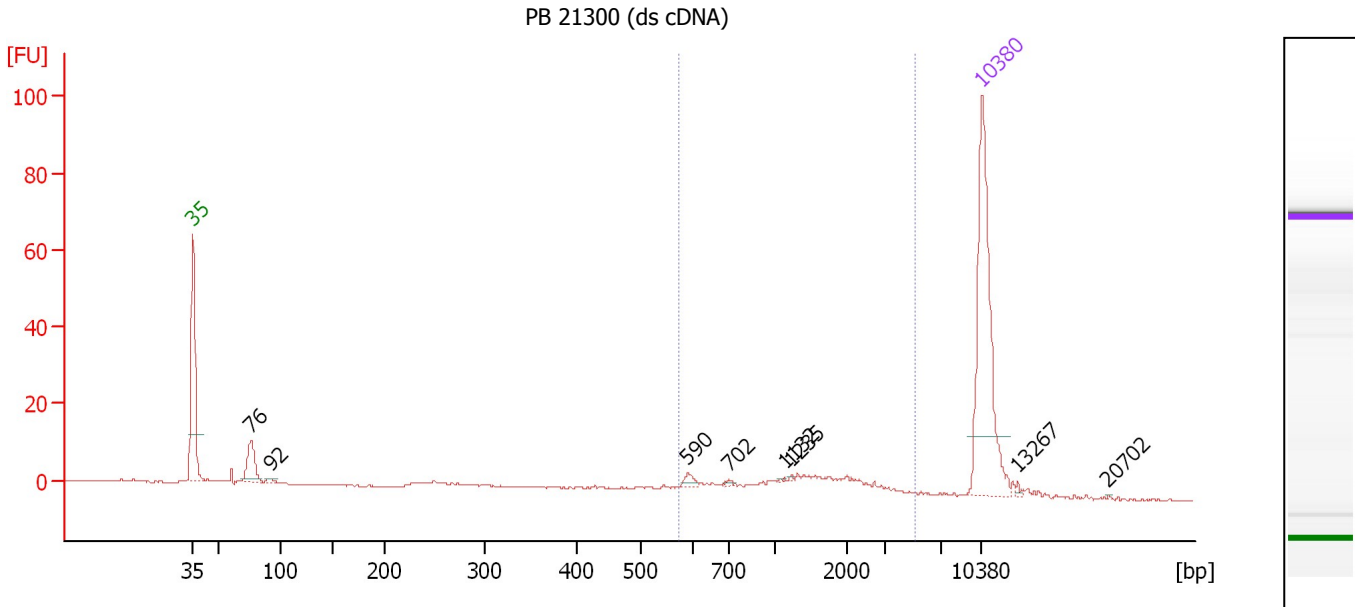
Region table for sample 7 : PB 21292 (ds cDNA)

From [bp]	To [bp]	Average Size [bp]	Molarity [pmol/l]	Conc. [pg/μl]	Corr. Area	% of Total	Size distribution in CV [%]	Color
567	5,714	1,671	122.9	95.83	123.5	73	56.1	Blue

Assay Class: High Sensitivity DNA Assay
 Data Path: C:\...ents and Settings\Bioanalyzer\2013-10-11\2013-10-11_003.xad

Created: 10/11/2013 11:39:05 AM
 Modified: 10/11/2013 12:25:19 PM

Electropherogram Summary Continued ...



Setpoint Deviations for sample 8 : PB 21300 (ds cDNA)

Height Threshold [FU] : 1

Overall Results for sample 8 : PB 21300 (ds cDNA)

Number of peaks found: 8 Corr. Area 1: 65.5
 Noise: 0.2

Peak table for sample 8 : PB 21300 (ds cDNA)

Peak	Size [bp]	Conc. [pg/μl]	Molarity [pmol/l]	Observations
1	35	125.00	5,411.3	Lower Marker
2	76	23.76	472.0	
3	92	2.48	40.9	
4	590	3.54	9.1	
5	702	1.12	2.4	
6	1,132	0.46	0.6	
7	1,235	0.49	0.6	
8	10,380	75.00	10.9	Upper Marker
9	13,267	0.00	0.0	
10	20,702	0.00	0.0	

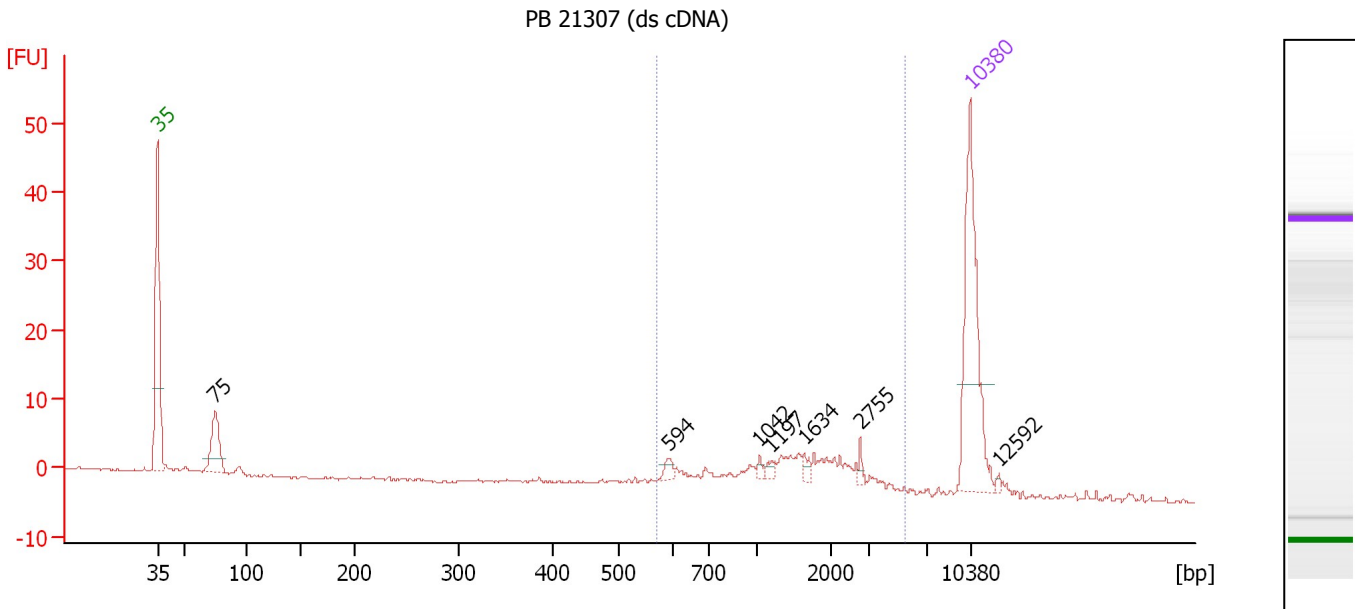
Region table for sample 8 : PB 21300 (ds cDNA)

From [bp]	To [bp]	Average Size [bp]	Molarity [pmol/l]	Conc. [pg/μl]	Corr. Area	% of Total	Size distribution in CV [%]	Color
574	5,180	1,513	67.0	48.19	65.5	49	55.7	Blue

Assay Class: High Sensitivity DNA Assay
 Data Path: C:\...ents and Settings\Bioanalyzer\2013-10-11\2013-10-11_003.xad

Created: 10/11/2013 11:39:05 AM
 Modified: 10/11/2013 12:25:19 PM

Electropherogram Summary Continued ...



Setpoint Deviations for sample 9 : PB 21307 (ds cDNA)

Height Threshold [FU] : 2

Overall Results for sample 9 : PB 21307 (ds cDNA)

Number of peaks found: 7 Corr. Area 1: 69.1
 Noise: 0.2

Peak table for sample 9 : PB 21307 (ds cDNA)

Peak	Size [bp]	Conc. [pg/μl]	Molarity [pmol/l]	Observations
1	35	125.00	5,411.3	Lower Marker
2	75	38.65	784.7	
3	594	4.95	12.6	
4	1,042	2.41	3.5	
5	1,197	2.95	3.7	
6	1,634	3.60	3.3	
7	2,755	2.78	1.5	
8	10,380	75.00	10.9	Upper Marker
9	12,592	0.00	0.0	

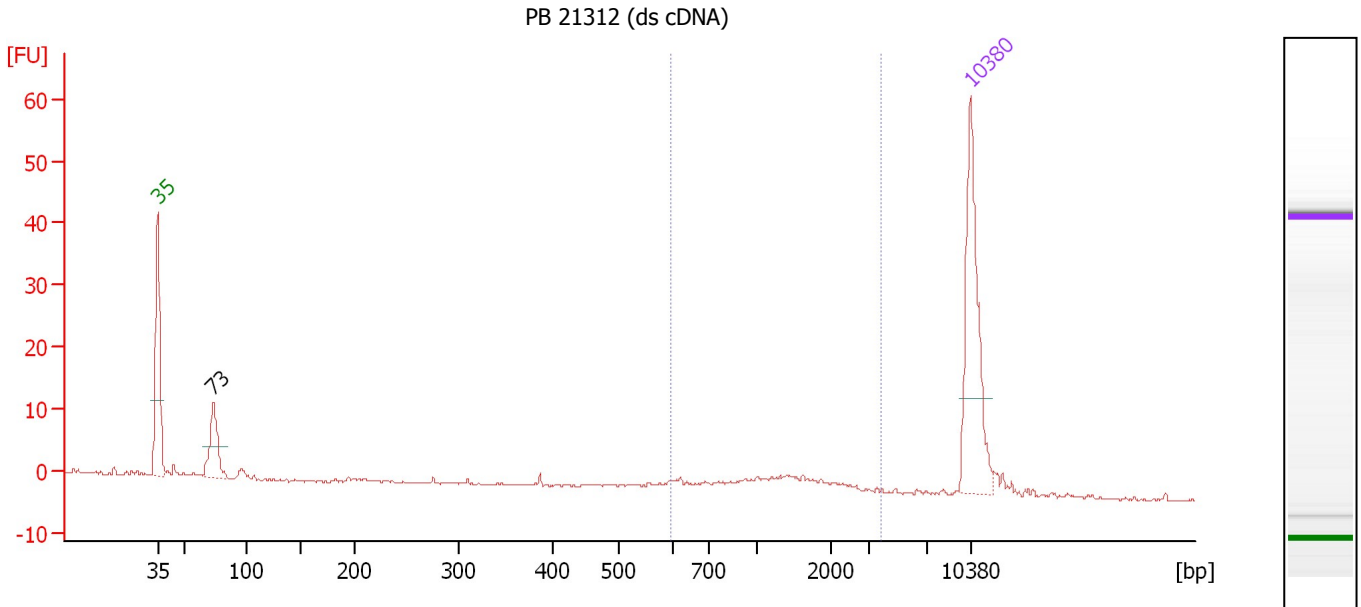
Region table for sample 9 : PB 21307 (ds cDNA)

From [bp]	To [bp]	Average Size [bp]	Molarity [pmol/l]	Conc. [pg/μl]	Corr. Area	% of Total	Size distribution in CV [%]	Color
572	5,478	1,616	131.6	100.56	69.1	64	55.4	Blue

Assay Class: High Sensitivity DNA Assay
 Data Path: C:\...ents and Settings\Bioanalyzer\2013-10-11\2013-10-11_003.xad

Created: 10/11/2013 11:39:05 AM
 Modified: 10/11/2013 12:25:19 PM

Electropherogram Summary Continued ...



Overall Results for sample 10 : PB 21312 (ds cDNA)

Number of peaks found: 1 Corr. Area 1: 23.6
 Noise: 0.1

Peak table for sample 10 : PB 21312 (ds cDNA)

Peak	Size [bp]	Conc. [pg/μl]	Molarity [pmol/l]	Observations
1	35	125.00	5,411.3	Lower Marker
2	73	45.43	945.9	
3	10,380	75.00	10.9	Upper Marker

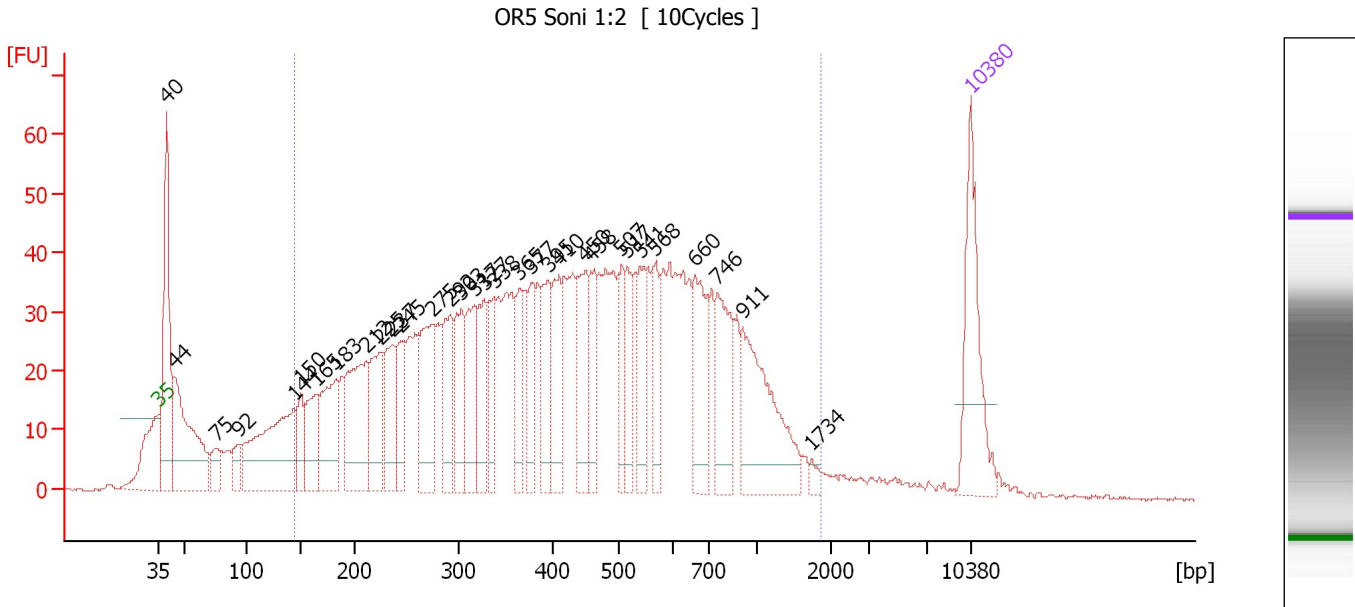
Region table for sample 10 : PB 21312 (ds cDNA)

From [bp]	To [bp]	Average Size [bp]	Molarity [pmol/l]	Conc. [pg/μl]	Corr. Area	% of Total	Size distribution in CV [%]	Color
595	3,739	1,369	41.7	30.37	23.6	41	43.6	Blue

Assay Class: High Sensitivity DNA Assay
 Data Path: C:\...ents and Settings\Bioanalyzer\2013-10-11\2013-10-11_003.xad

Created: 10/11/2013 11:39:05 AM
 Modified: 10/11/2013 12:25:19 PM

Electropherogram Summary Continued ...



Overall Results for sample 11 : OR5 Soni 1:2

Number of peaks found: 32 Corr. Area 1: 1,706.7
 Noise: 0.2

Peak table for sample 11 : OR5 Soni 1:2

Peak	Size [bp]	Conc. [pg/μl]	Molarity [pmol/l]	Observations
1	35	125.00	5,411.3	Lower Marker
2	40	188.60	7,135.3	
3	44	166.59	5,676.5	
4	75	22.53	454.8	
5	92	25.25	414.2	
6	144	177.47	1,873.5	
7	150	33.13	335.0	
8	165	60.12	553.6	
9	183	90.11	744.0	
10	212	123.59	882.9	
11	225	76.14	512.8	
12	237	63.01	402.4	
13	245	47.87	296.3	
14	275	91.41	504.0	
15	292	65.72	341.1	
16	303	62.92	314.7	
17	317	68.96	329.3	
18	327	56.04	259.3	
19	338	42.74	191.8	
20	365	41.84	173.6	
21	377	41.98	168.7	
22	395	56.34	216.1	
23	410	56.28	208.0	
24	450	65.46	220.4	
25	458	46.75	154.7	
26	507	39.33	117.6	

Assay Class: High Sensitivity DNA Assay
 Data Path: C:\...ents and Settings\Bioanalyzer\2013-10-11\2013-10-11_003.xad


Created: 10/11/2013 11:39:05 AM
 Modified: 10/11/2013 12:25:19 PM

Electropherogram Summary Continued ...

... Peak table for sample 11 : OR5 Soni 1:2

Peak	Size [bp]	Conc. [pg/μl]	Molarity [pmol/l]	Observations
27	517	38.49	112.8	
28	541	46.24	129.6	
29	568	39.03	104.1	
30	660	68.99	158.3	
31	746	74.23	150.7	
32	911	114.08	189.7	
33	1,734	5.13	4.5	
34	▶ 10,380	75.00	10.9	Upper Marker

Region table for sample 11 : OR5 Soni 1:2

From [bp]	To [bp]	Average Size [bp]	Molarity [pmol/l]	Conc. [pg/μl]	Corr. Area	% of Total	Size distribution in CV [%]	Color
143	1,870	487	11,264.8	2,485.42	1,706.7	83	56.2	

Assay Class: High Sensitivity DNA Assay
Data Path: C:\...ents and Settings\Bioanalyzer\2013-10-11\2013-10-11_003.xad

Created: 10/11/2013 11:39:05 AM
Modified: 10/11/2013 12:25:19 PM

Gel Image

