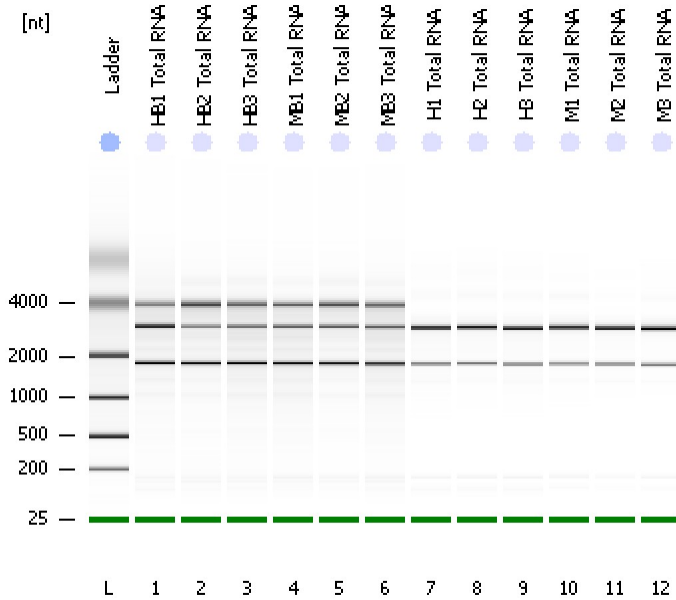


Assay Class: Eukaryote Total RNA Nano
Data Path: C:\...ents and Settings\Bioanalyzer\2013-10-14\2013-10-14_001.xad

Created: 10/14/2013 10:58:26 AM
Modified: 10/14/2013 11:32:55 AM

Electrophoresis File Run Summary



Instrument Information:

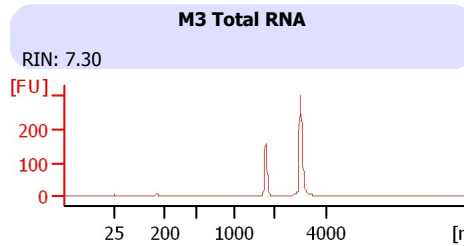
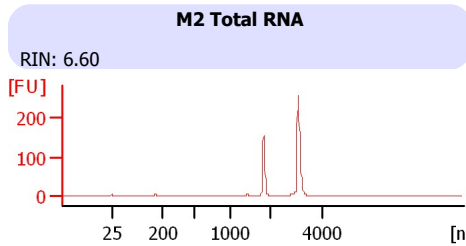
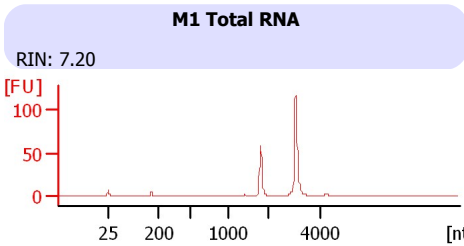
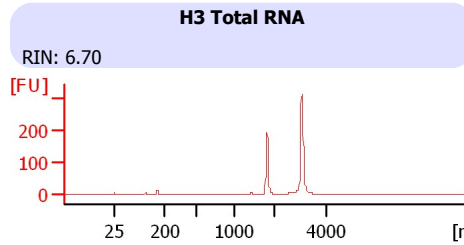
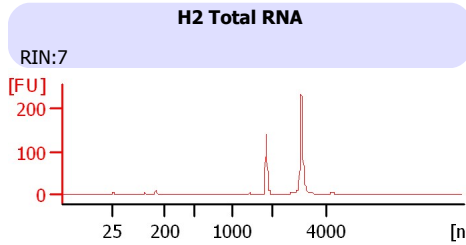
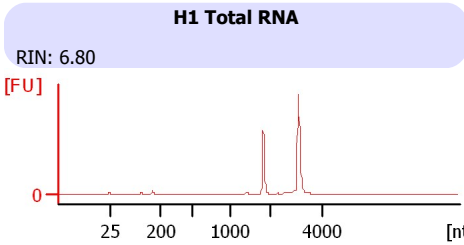
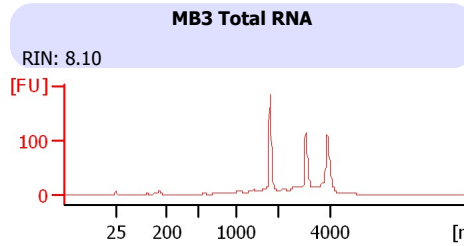
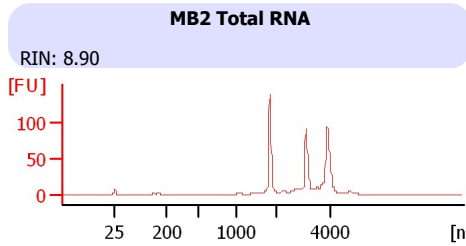
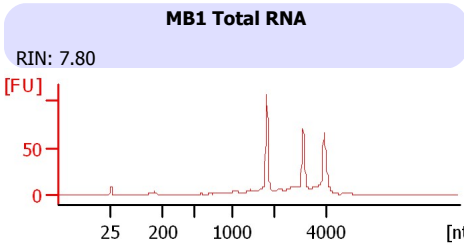
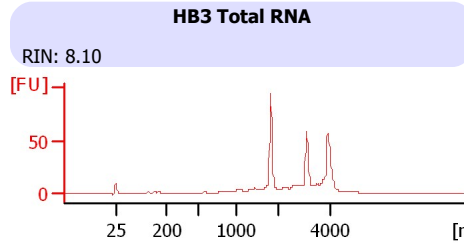
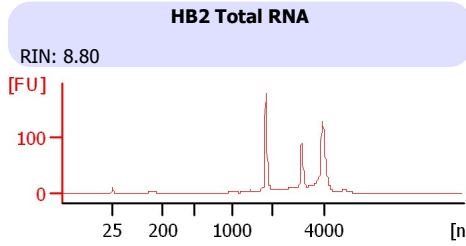
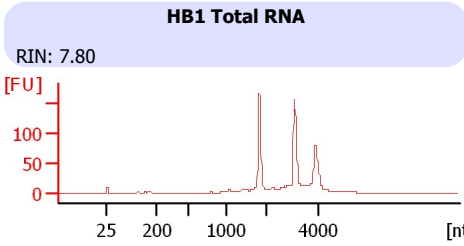
Instrument Name: DE13701086 Firmware: C.01.069
Serial#: DE13701086 Type: G2938B

Assay Information:

Assay Origin Path: C:\Program Files\Agilent\2100 bioanalyzer\2100 expert\assays\RNA\Eukaryote Total RNA Nano Series II.xsy
Assay Class: Eukaryote Total RNA Nano
Version: 2.6
Assay Comments: Total RNA Analysis ng sensitivity (Eukaryote)
© Copyright 2003 - 2009 Agilent Technologies, Inc.

Chip Information:

Chip Lot #:
Reagent Kit Lot #:
Chip Comments:



Assay Class: Eukaryote Total RNA Nano
Data Path: C:\...ents and Settings\Bioanalyzer\2013-10-14\2013-10-14_001.xad

Created: 10/14/2013 10:58:26 AM
Modified: 10/14/2013 11:32:55 AM

Electrophoresis File Run Summary (Chip Summary)

Sample Name	Sample Comment	Status	Result Label	Result Color
HB1 Total RNA		✓	RIN: 7.80	
HB2 Total RNA		✓	RIN: 8.80	
HB3 Total RNA		✓	RIN: 8.10	
MB1 Total RNA		✓	RIN: 7.80	
MB2 Total RNA		✓	RIN: 8.90	
MB3 Total RNA		✓	RIN: 8.10	
H1 Total RNA		✓	RIN: 6.80	
H2 Total RNA		✓	RIN:7	
H3 Total RNA		✓	RIN: 6.70	
M1 Total RNA		✓	RIN: 7.20	
M2 Total RNA		✓	RIN: 6.60	
M3 Total RNA		✓	RIN: 7.30	
Ladder		✓	All Other Samples	

Chip Lot #

Reagent Kit Lot #

Chip Comments :

Assay Class: Eukaryote Total RNA Nano
Data Path: C:\...ents and Settings\Bioanalyzer\2013-10-14\2013-10-14_001.xad

Created: 10/14/2013 10:58:26 AM
Modified: 10/14/2013 11:32:55 AM

Electrophoresis Assay Details

General Analysis Settings

Number of Available Sample and Ladder Wells (Max.) : 13
Minimum Visible Range [s] : 17
Maximum Visible Range [s] : 70
Start Analysis Time Range [s] : 19
End Analysis Time Range [s] : 69
Ladder Concentration [ng/ μ l] : 150
Lower Marker Concentration [ng/ μ l] : 0
Upper Marker Concentration [ng/ μ l] : 0
Used Lower Marker for Quantitation
Standard Curve Fit is Logarithmic
Show Data Aligned to Lower Marker

Integrator Settings

Integration Start Time [s] : 19
Integration End Time [s] : 69
Slope Threshold : 0.6
Height Threshold [FU] : 0.5
Area Threshold : 0.2
Width Threshold [s] : 0.5
Baseline Plateau [s] : 6

Filter Settings

Filter Width [s] : 0.5
Polynomial Order : 4

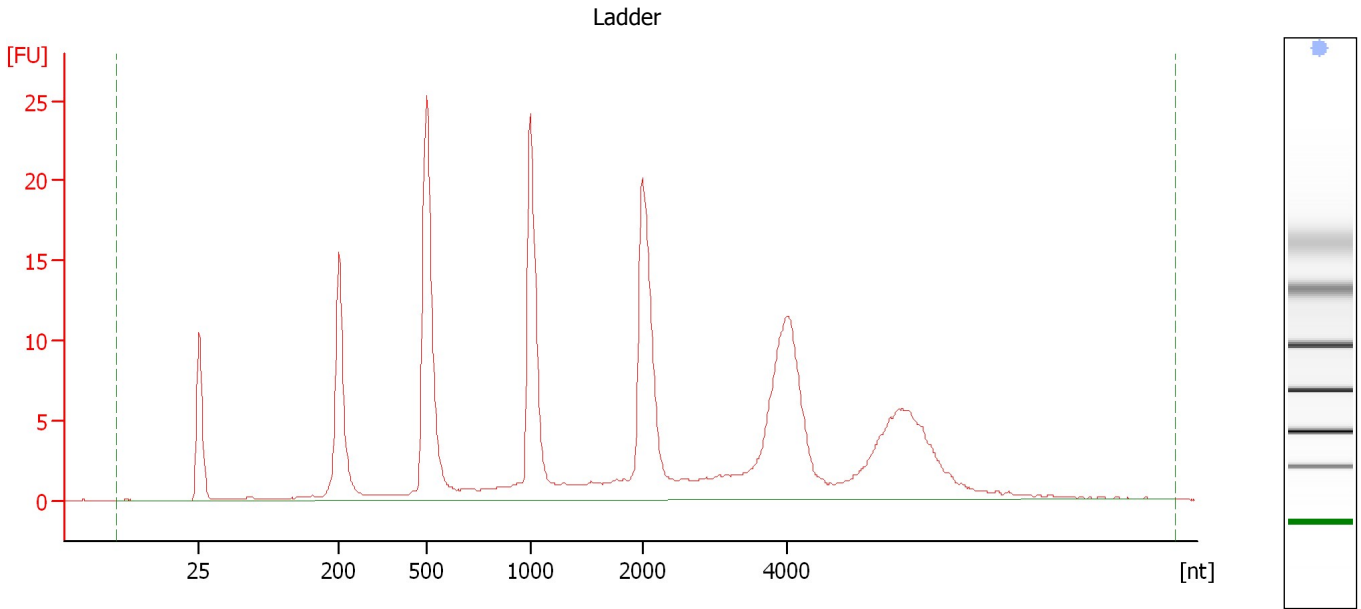
Ladder

Ladder Peak	Size
1	25
2	200
3	500
4	1000
5	2000
6	4000

Assay Class: Eukaryote Total RNA Nano
Data Path: C:\...ents and Settings\Bioanalyzer\2013-10-14\2013-10-14_001.xad

Created: 10/14/2013 10:58:26 AM
Modified: 10/14/2013 11:32:55 AM

Electropherogram Summary



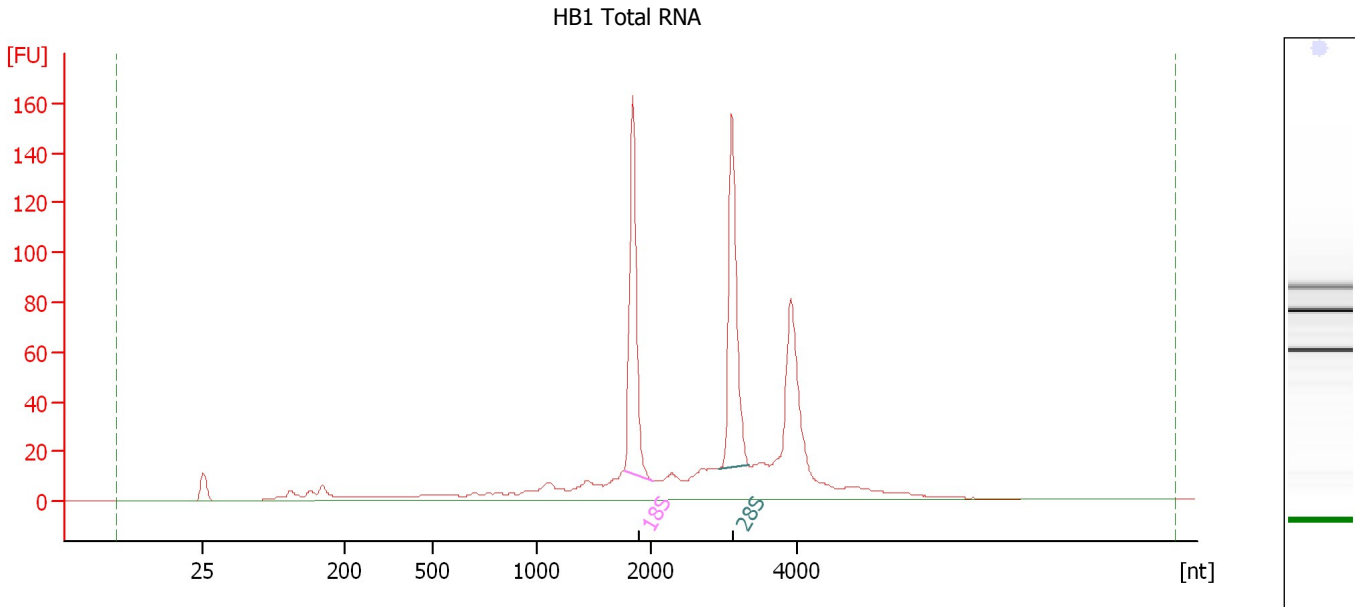
Overall Results for Ladder

RNA Area:	232.7	Result Flagging Color:	
RNA Concentration:	150 ng/μl	Result Flagging Label:	All Other Samples

Assay Class: Eukaryote Total RNA Nano
Data Path: C:\...ents and Settings\Bioanalyzer\2013-10-14\2013-10-14_001.xad

Created: 10/14/2013 10:58:26 AM
Modified: 10/14/2013 11:32:55 AM

Electropherogram Summary Continued ...



Overall Results for sample 1 : HB1 Total RNA

RNA Area: 752.4 RNA Integrity Number (RIN): 7.8 (B.02.08)
RNA Concentration: 485 ng/μl Result Flagging Color:
rRNA Ratio [28s / 18s]: 1.0 Result Flagging Label: RIN: 7.80

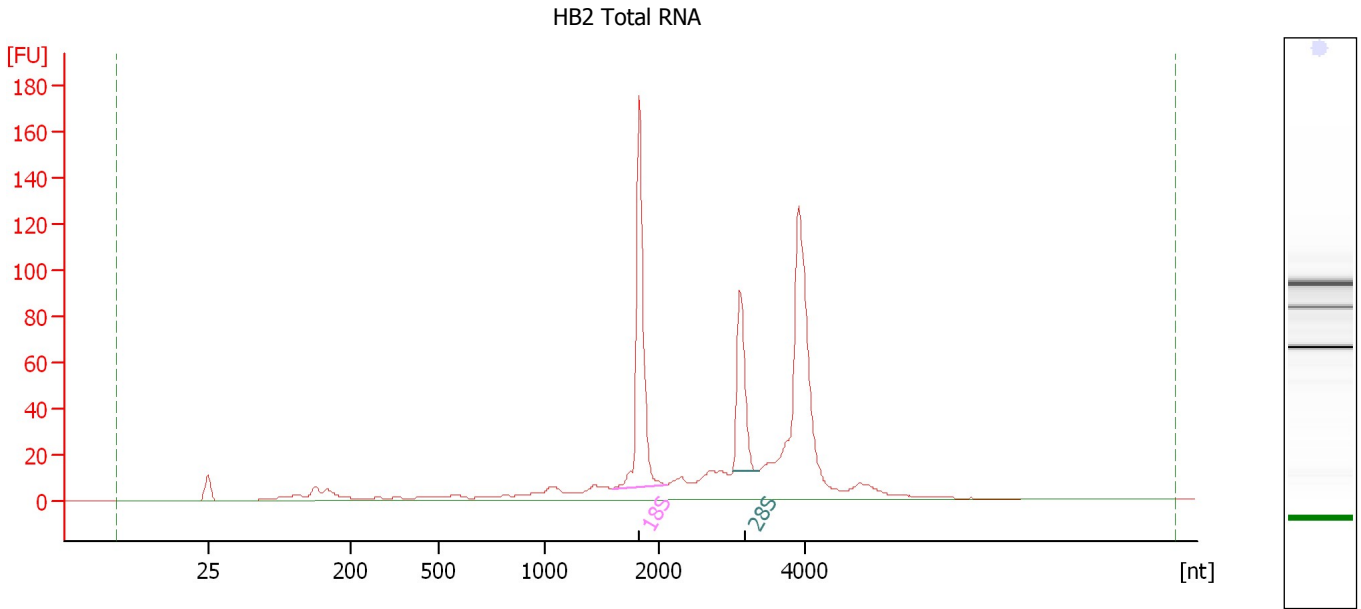
Fragment table for sample 1 : HB1 Total RNA

Name	Start Size [nt]	End Size [nt]	Area	% of total Area
18S	1,768	2,035	127.9	17.0
28S	2,933	3,353	131.6	17.5

Assay Class: Eukaryote Total RNA Nano
Data Path: C:\...ents and Settings\Bioanalyzer\2013-10-14\2013-10-14_001.xad

Created: 10/14/2013 10:58:26 AM
Modified: 10/14/2013 11:32:55 AM

Electropherogram Summary Continued ...



Overall Results for sample 2 : HB2 Total RNA

RNA Area: 725.4 RNA Integrity Number (RIN): 8.8 (B.02.08)
RNA Concentration: 468 ng/μl Result Flagging Color:
rRNA Ratio [28s / 18s]: 0.5 Result Flagging Label: RIN: 8.80

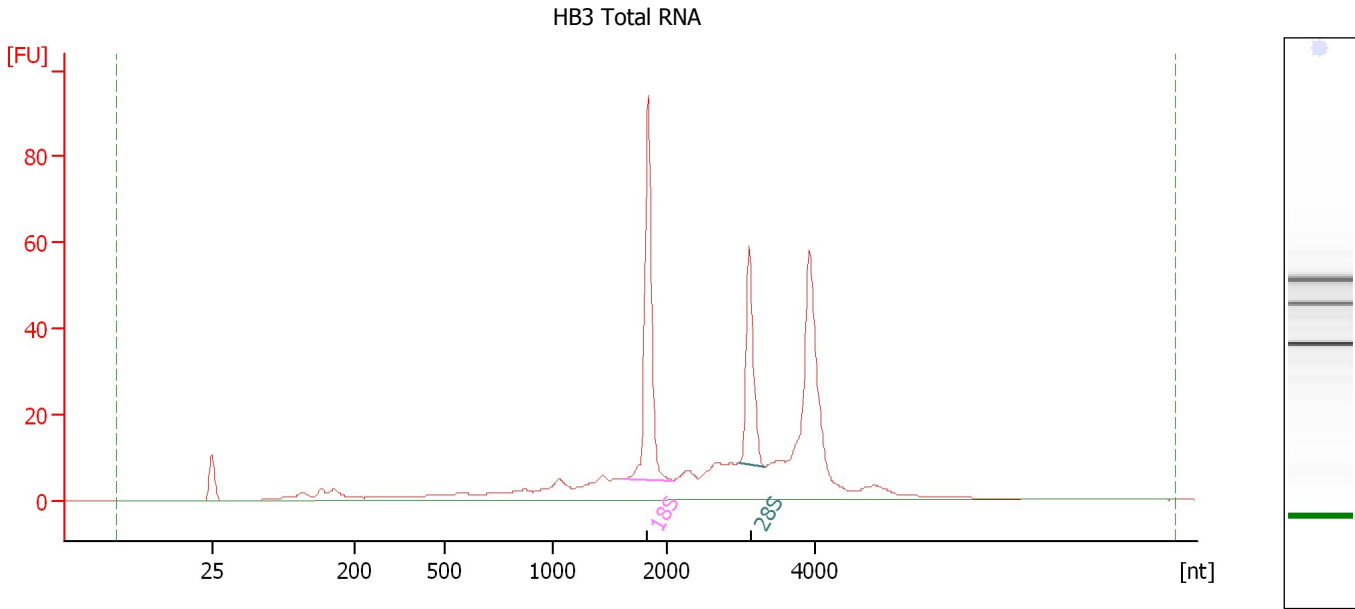
Fragment table for sample 2 : HB2 Total RNA

Name	Start Size [nt]	End Size [nt]	Area	% of total Area
18S	1,596	2,100	145.0	20.0
28S	3,009	3,371	66.8	9.2

Assay Class: Eukaryote Total RNA Nano
Data Path: C:\...ents and Settings\Bioanalyzer\2013-10-14\2013-10-14_001.xad

Created: 10/14/2013 10:58:26 AM
Modified: 10/14/2013 11:32:55 AM

Electropherogram Summary Continued ...



Overall Results for sample 3 : HB3 Total RNA

RNA Area: 425.0 RNA Integrity Number (RIN): 8.1 (B.02.08)
RNA Concentration: 274 ng/μl Result Flagging Color:
rRNA Ratio [28s / 18s]: 0.6 Result Flagging Label: RIN: 8.10

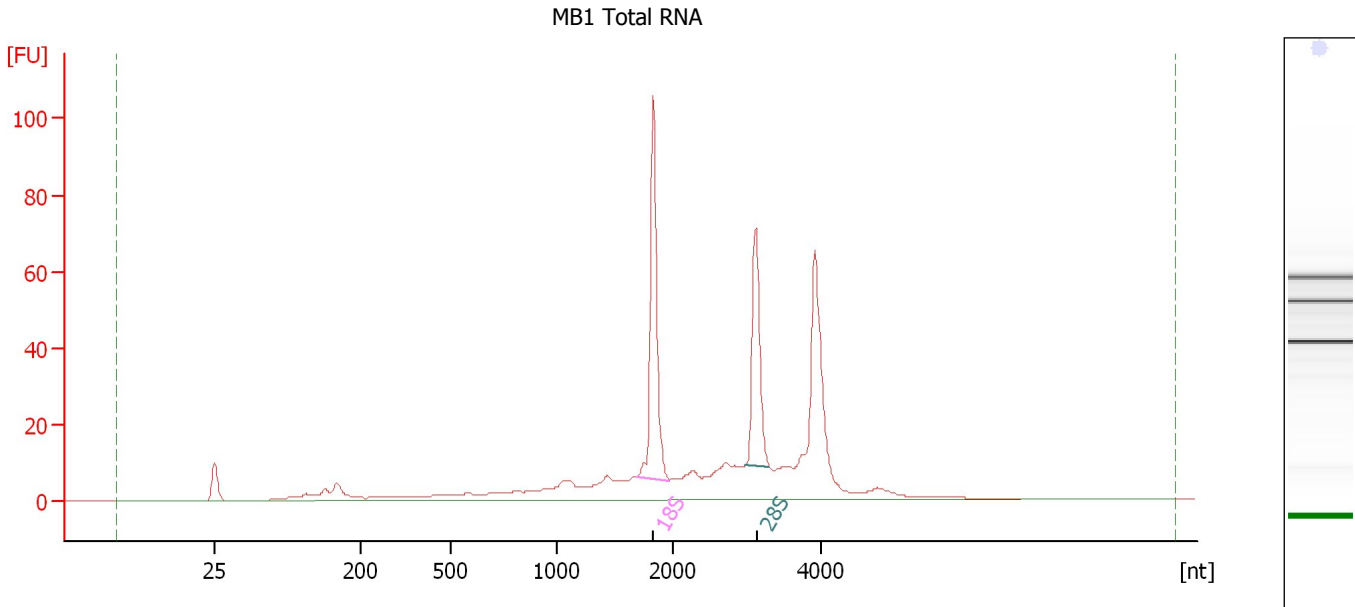
Fragment table for sample 3 : HB3 Total RNA

Name	Start Size [nt]	End Size [nt]	Area	% of total Area
18S	1,613	2,091	74.1	17.4
28S	2,975	3,333	41.0	9.7

Assay Class: Eukaryote Total RNA Nano
Data Path: C:\...ents and Settings\Bioanalyzer\2013-10-14\2013-10-14_001.xad

Created: 10/14/2013 10:58:26 AM
Modified: 10/14/2013 11:32:55 AM

Electropherogram Summary Continued ...



Overall Results for sample 4 : MB1 Total RNA

RNA Area:	447.8	RNA Integrity Number (RIN):	7.8 (B.02.08)
RNA Concentration:	289 ng/μl	Result Flagging Color:	
rRNA Ratio [28s / 18s]:	0.6	Result Flagging Label:	RIN: 7.80

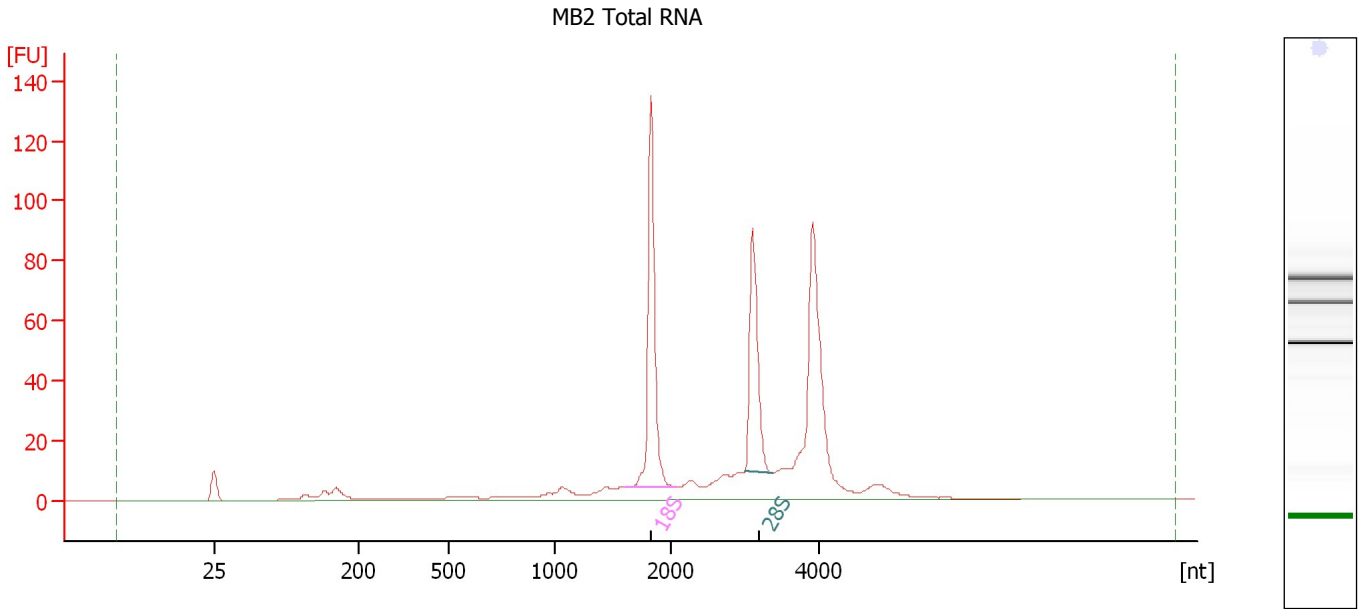
Fragment table for sample 4 : MB1 Total RNA

Name	Start Size [nt]	End Size [nt]	Area	% of total Area
18S	1,692	1,969	79.7	17.8
28S	2,970	3,299	49.7	11.1

Assay Class: Eukaryote Total RNA Nano
Data Path: C:\...ents and Settings\Bioanalyzer\2013-10-14\2013-10-14_001.xad

Created: 10/14/2013 10:58:26 AM
Modified: 10/14/2013 11:32:55 AM

Electropherogram Summary Continued ...



Overall Results for sample 5 : MB2 Total RNA

RNA Area:	505.4	RNA Integrity Number (RIN):	8.9 (B.02.08)
RNA Concentration:	326 ng/μl	Result Flagging Color:	
rRNA Ratio [28s / 18s]:	0.6	Result Flagging Label:	RIN: 8.90

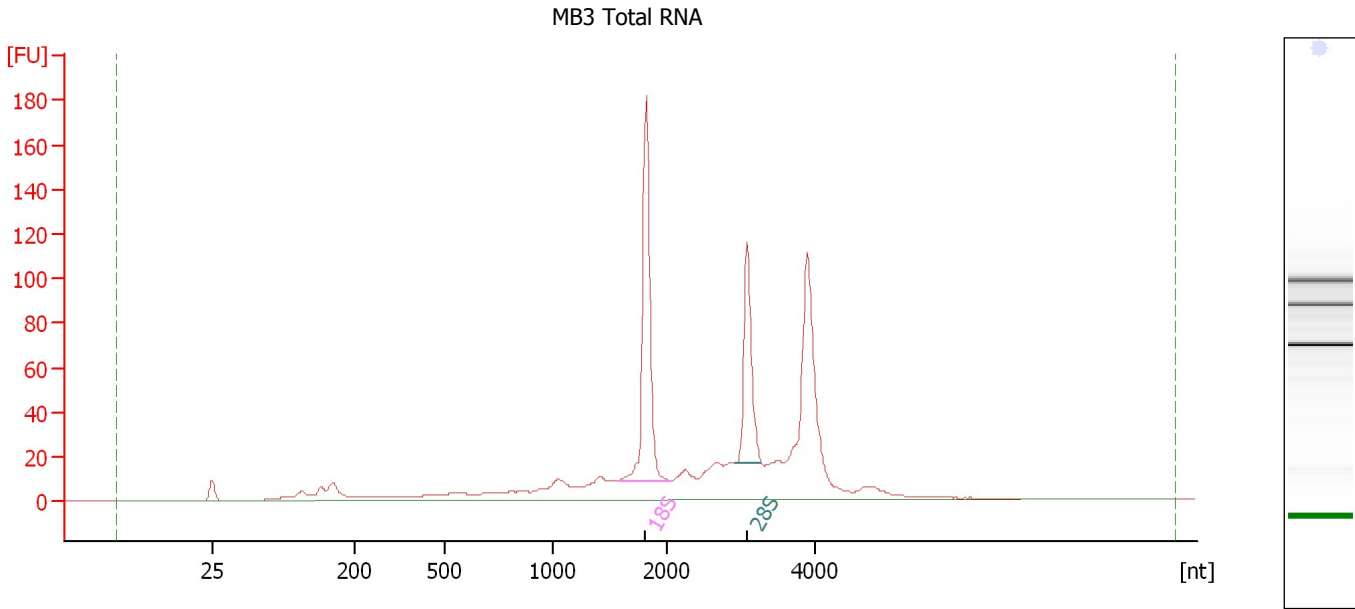
Fragment table for sample 5 : MB2 Total RNA

Name	Start Size [nt]	End Size [nt]	Area	% of total Area
18S	1,607	2,079	109.3	21.6
28S	2,999	3,383	68.5	13.6

Assay Class: Eukaryote Total RNA Nano
 Data Path: C:\...ents and Settings\Bioanalyzer\2013-10-14\2013-10-14_001.xad

Created: 10/14/2013 10:58:26 AM
 Modified: 10/14/2013 11:32:55 AM

Electropherogram Summary Continued ...



Overall Results for sample 6 : MB3 Total RNA

RNA Area:	835.1	RNA Integrity Number (RIN):	8.1 (B.02.08)
RNA Concentration:	538 ng/μl	Result Flagging Color:	
rRNA Ratio [28s / 18s]:	0.6	Result Flagging Label:	RIN: 8.10

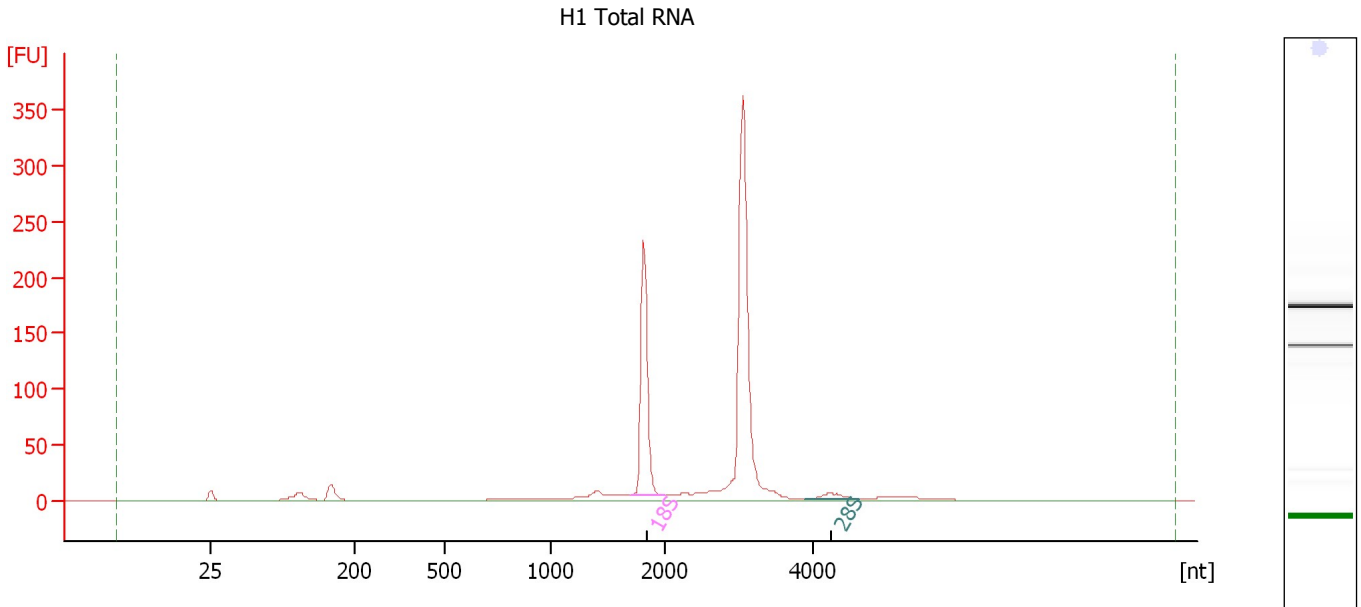
Fragment table for sample 6 : MB3 Total RNA

Name	Start Size [nt]	End Size [nt]	Area	% of total Area
18S	1,576	2,048	149.4	17.9
28S	2,920	3,278	84.2	10.1

Assay Class: Eukaryote Total RNA Nano
 Data Path: C:\...ents and Settings\Bioanalyzer\2013-10-14\2013-10-14_001.xad

Created: 10/14/2013 10:58:26 AM
 Modified: 10/14/2013 11:32:55 AM

Electropherogram Summary Continued ...



Overall Results for sample 7 : H1 Total RNA

RNA Area:	786.1	RNA Integrity Number (RIN):	6.8 (B.02.08, Anomaly Threshold(s) manually adapted)
RNA Concentration:	507 ng/μl	Result Flagging Color:	
rRNA Ratio [28s / 18s]:	0.1	Result Flagging Label:	RIN: 6.80

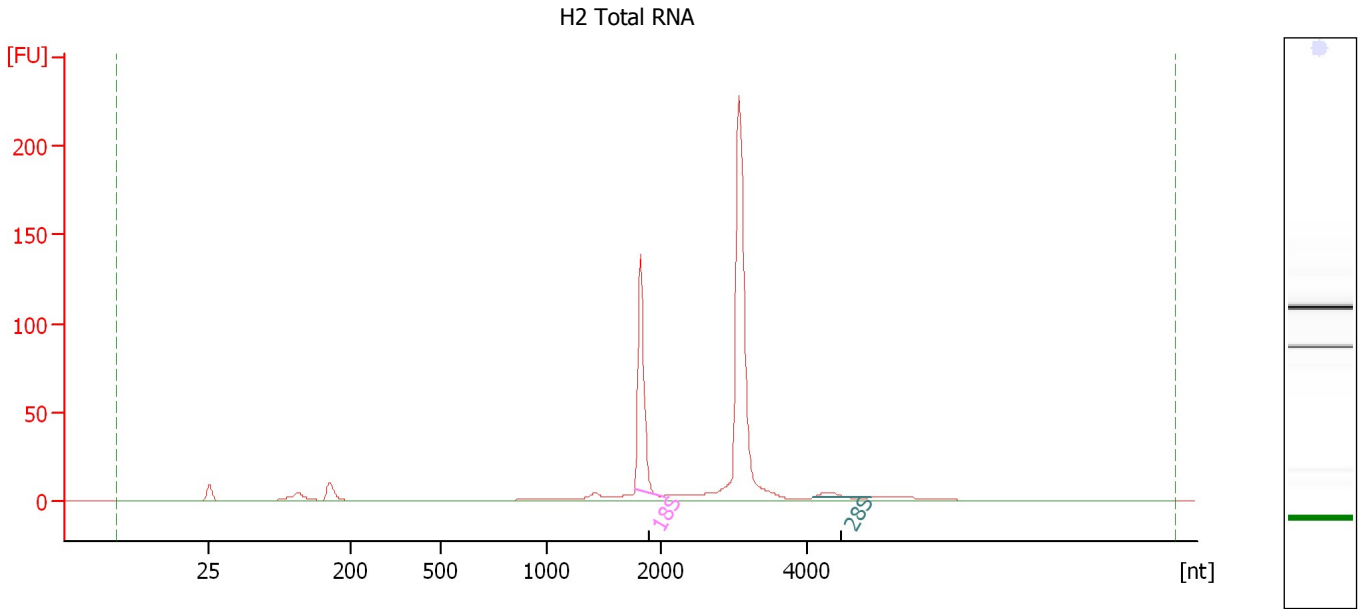
Fragment table for sample 7 : H1 Total RNA

Name	Start Size [nt]	End Size [nt]	Area	% of total Area
18S	1,709	1,998	173.3	22.0
28S	3,899	4,642	9.8	1.2

Assay Class: Eukaryote Total RNA Nano
Data Path: C:\...ents and Settings\Bioanalyzer\2013-10-14\2013-10-14_001.xad

Created: 10/14/2013 10:58:26 AM
Modified: 10/14/2013 11:32:55 AM

Electropherogram Summary Continued ...



Overall Results for sample 8 : H2 Total RNA

RNA Area: 473.8 RNA Integrity Number (RIN): 7 (B.02.08, Anomaly Threshold(s) manually adapted)
RNA Concentration: 305 ng/μl
rRNA Ratio [28s / 18s]: 0.0
Result Flagging Color:
Result Flagging Label: RIN:7

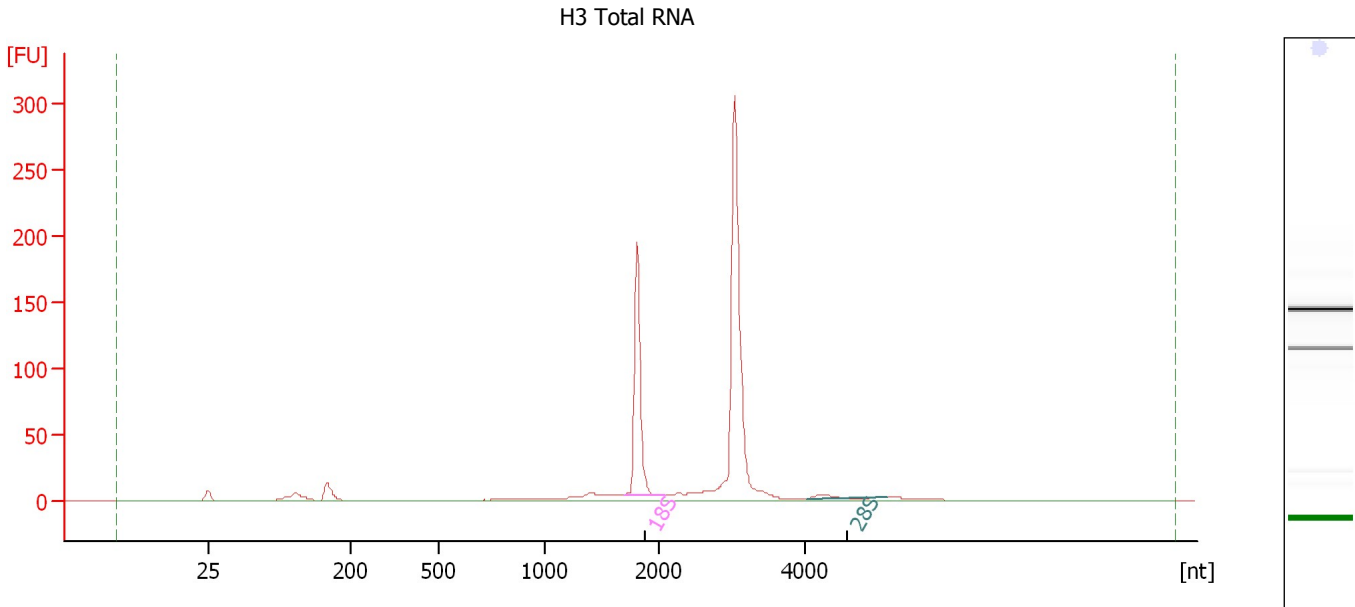
Fragment table for sample 8 : H2 Total RNA

Name	Start Size [nt]	End Size [nt]	Area	% of total Area
18S	1,768	2,050	98.3	20.8
28S	4,077	4,862	4.8	1.0

Assay Class: Eukaryote Total RNA Nano
Data Path: C:\...ents and Settings\Bioanalyzer\2013-10-14\2013-10-14_001.xad

Created: 10/14/2013 10:58:26 AM
Modified: 10/14/2013 11:32:55 AM

Electropherogram Summary Continued ...



Overall Results for sample 9 : H3 Total RNA

RNA Area: 645.1 RNA Integrity Number (RIN): 6.7 (B.02.08, Anomaly Threshold(s) manually adapted)
RNA Concentration: 416 ng/μl
rRNA Ratio [28s / 18s]: 0.0
Result Flagging Color:
Result Flagging Label: RIN: 6.70

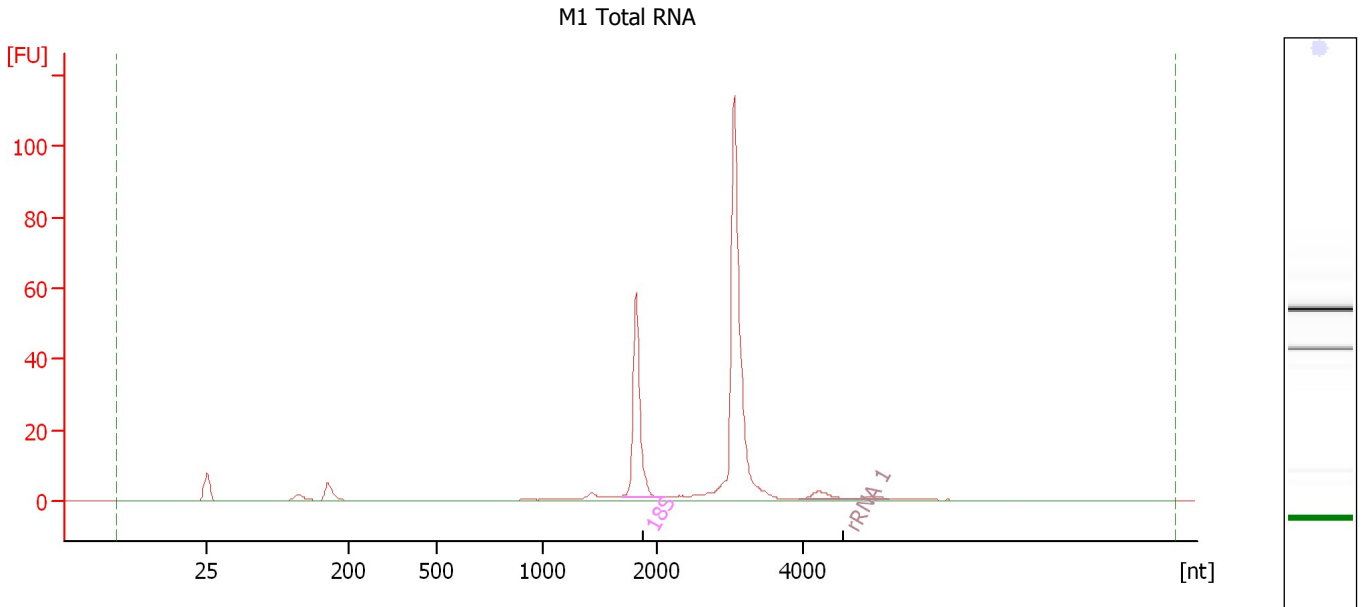
Fragment table for sample 9 : H3 Total RNA

Name	Start Size [nt]	End Size [nt]	Area	% of total Area
18S	1,706	2,081	143.5	22.2
28S	4,026	5,102	4.8	0.7

Assay Class: Eukaryote Total RNA Nano
 Data Path: C:\...ents and Settings\Bioanalyzer\2013-10-14\2013-10-14_001.xad

Created: 10/14/2013 10:58:26 AM
 Modified: 10/14/2013 11:32:55 AM

Electropherogram Summary Continued ...



Overall Results for sample 10 : M1 Total RNA

RNA Area:	225.0	RNA Integrity Number (RIN):	7.2 (B.02.08, Anomaly Threshold(s) manually adapted)
RNA Concentration:	145 ng/μl	Result Flagging Color:	
rRNA Ratio [28s / 18s]:	0.0	Result Flagging Label:	RIN: 7.20

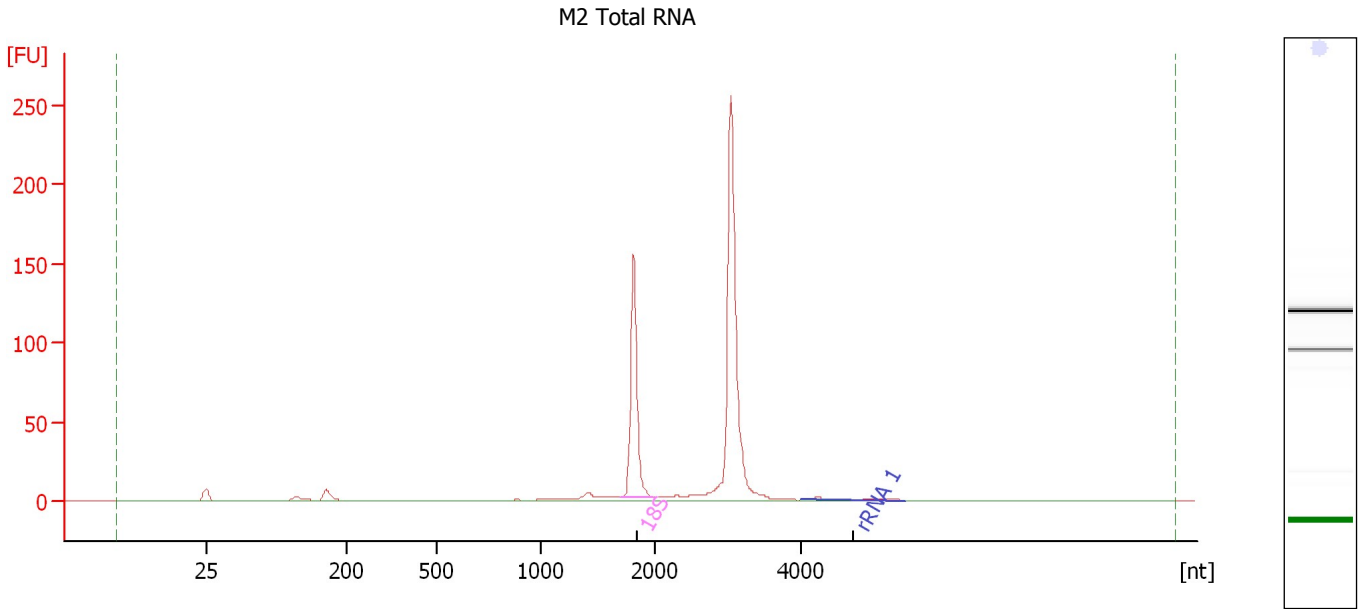
Fragment table for sample 10 : M1 Total RNA

Name	Start Size [nt]	End Size [nt]	Area	% of total Area
18S	1,696	2,108	49.9	22.2
rRNA 1	3,933	5,178	3.7	1.7

Assay Class: Eukaryote Total RNA Nano
 Data Path: C:\...ents and Settings\Bioanalyzer\2013-10-14\2013-10-14_001.xad

Created: 10/14/2013 10:58:26 AM
 Modified: 10/14/2013 11:32:55 AM

Electropherogram Summary Continued ...



Overall Results for sample 11 : M2 Total RNA

RNA Area:	480.7	RNA Integrity Number (RIN):	6.6 (B.02.08, Anomaly Threshold(s) manually adapted)
RNA Concentration:	310 ng/μl	Result Flagging Color:	
rRNA Ratio [28s / 18s]:	0.0	Result Flagging Label:	RIN: 6.60

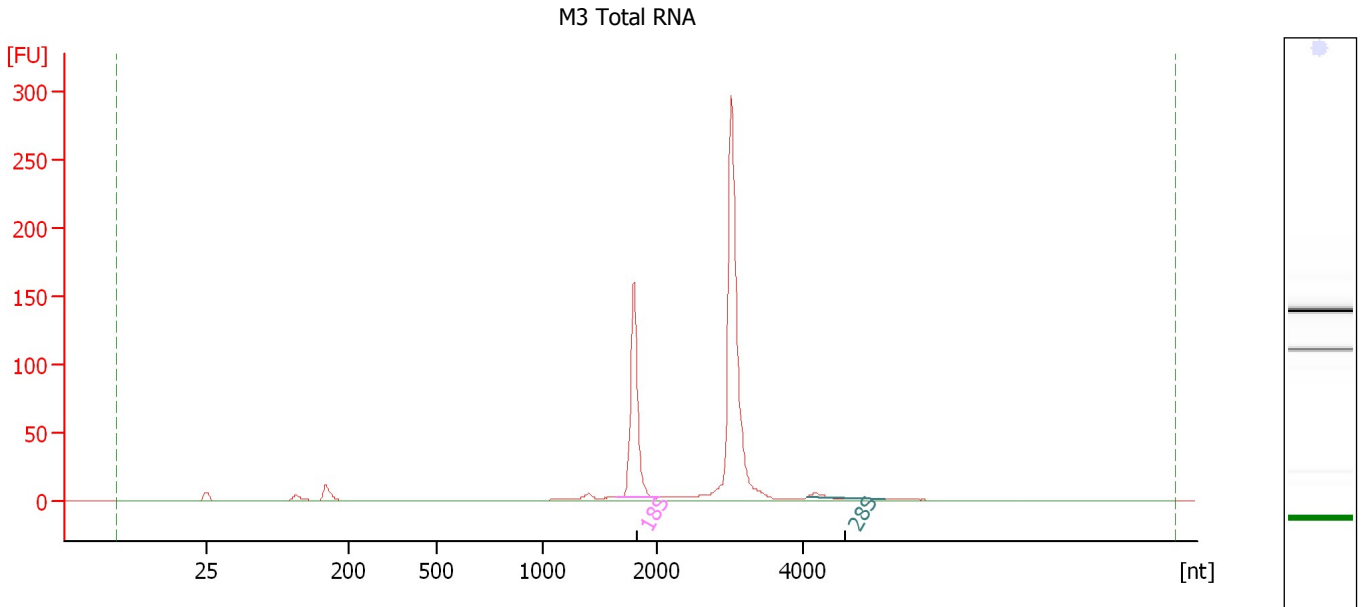
Fragment table for sample 11 : M2 Total RNA

Name	Start Size [nt]	End Size [nt]	Area	% of total Area
18S	1,694	1,982	120.1	25.0
rRNA 1	3,988	5,422	3.4	0.7

Assay Class: Eukaryote Total RNA Nano
 Data Path: C:\...ents and Settings\Bioanalyzer\2013-10-14\2013-10-14_001.xad

Created: 10/14/2013 10:58:26 AM
 Modified: 10/14/2013 11:32:55 AM

Electropherogram Summary Continued ...



Overall Results for sample 12 : M3 Total RNA

RNA Area:	585.5	RNA Integrity Number (RIN):	7.3 (B.02.08, Anomaly Threshold(s) manually adapted)
RNA Concentration:	377 ng/μl	Result Flagging Color:	
rRNA Ratio [28s / 18s]:	0.0	Result Flagging Label:	RIN: 7.30

Fragment table for sample 12 : M3 Total RNA

Name	Start Size [nt]	End Size [nt]	Area	% of total Area
18S	1,648	2,034	139.6	23.8
28S	4,046	5,120	4.0	0.7

Assay Class: Eukaryote Total RNA Nano
Data Path: C:\...ents and Settings\Bioanalyzer\2013-10-14\2013-10-14_001.xad

Created: 10/14/2013 10:58:26 AM
Modified: 10/14/2013 11:32:55 AM

Gel Image

