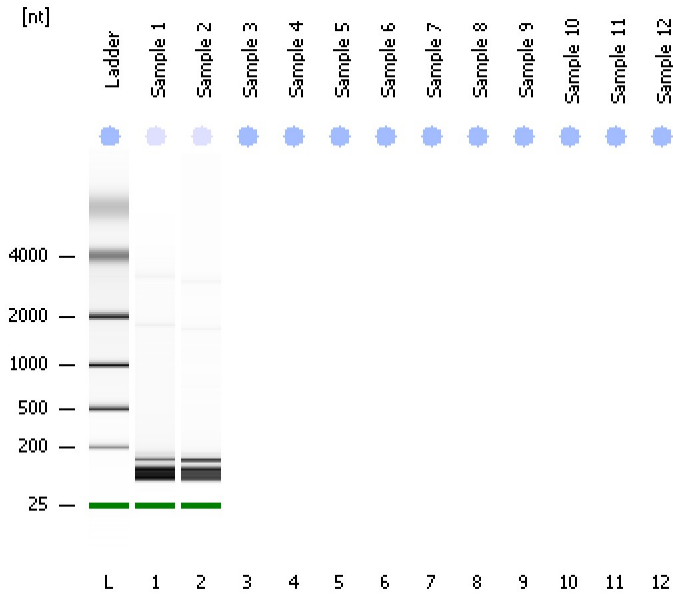


Assay Class: Eukaryote Total RNA Nano
Data Path: C:\...ents and Settings\Bioanalyzer\2013-10-14\2013-10-14_002.xad

Created: 10/14/2013 12:29:50 PM
Modified: 10/14/2013 12:39:58 PM

Electrophoresis File Run Summary



Instrument Information:

Instrument Name: DE13701086 Firmware: C.01.069
Serial#: DE13701086 Type: G2938B

Assay Information:

Assay Origin Path: C:\Program Files\Agilent\2100 bioanalyzer\2100 expert\assays\RNA\Eukaryote Total RNA Nano Series II.xsy

Assay Class: Eukaryote Total RNA Nano

Version: 2.6

Assay Comments: Total RNA Analysis ng sensitivity (Eukaryote)

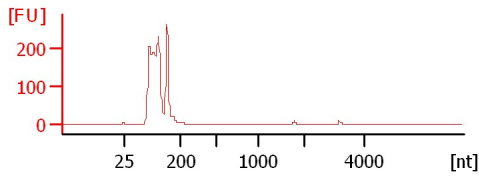
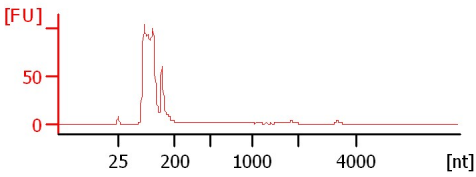
© Copyright 2003 - 2009 Agilent Technologies, Inc.

Chip Information:

Chip Lot #:

Reagent Kit Lot #:

Chip Comments:



Assay Class: Eukaryote Total RNA Nano
 Data Path: C:\...ents and Settings\Bioanalyzer\2013-10-14\2013-10-14_002.xad

Created: 10/14/2013 12:29:50 PM
 Modified: 10/14/2013 12:39:58 PM

Electrophoresis File Run Summary (Chip Summary)

Sample Name	Sample Comment	Status	Result Label	Result Color
Sample 1		✓	RIN: 2.50	
Sample 2		✓	RIN: 2.60	
Sample 3				
Sample 4				
Sample 5				
Sample 6				
Sample 7				
Sample 8				
Sample 9				
Sample 10				
Sample 11				
Sample 12				
Ladder		✓	All Other Samples	

Chip Lot #

Reagent Kit Lot #

Chip Comments :

Assay Class: Eukaryote Total RNA Nano
Data Path: C:\...ents and Settings\Bioanalyzer\2013-10-14\2013-10-14_002.xad

Created: 10/14/2013 12:29:50 PM
Modified: 10/14/2013 12:39:58 PM

Electrophoresis Assay Details

General Analysis Settings

Number of Available Sample and Ladder Wells (Max.) : 13
Minimum Visible Range [s] : 17
Maximum Visible Range [s] : 70
Start Analysis Time Range [s] : 19
End Analysis Time Range [s] : 69
Ladder Concentration [ng/ μ l] : 150
Lower Marker Concentration [ng/ μ l] : 0
Upper Marker Concentration [ng/ μ l] : 0
Used Lower Marker for Quantitation
Standard Curve Fit is Logarithmic
Show Data Aligned to Lower Marker

Integrator Settings

Integration Start Time [s] : 19
Integration End Time [s] : 69
Slope Threshold : 0.6
Height Threshold [FU] : 0.5
Area Threshold : 0.2
Width Threshold [s] : 0.5
Baseline Plateau [s] : 6

Filter Settings

Filter Width [s] : 0.5
Polynomial Order : 4

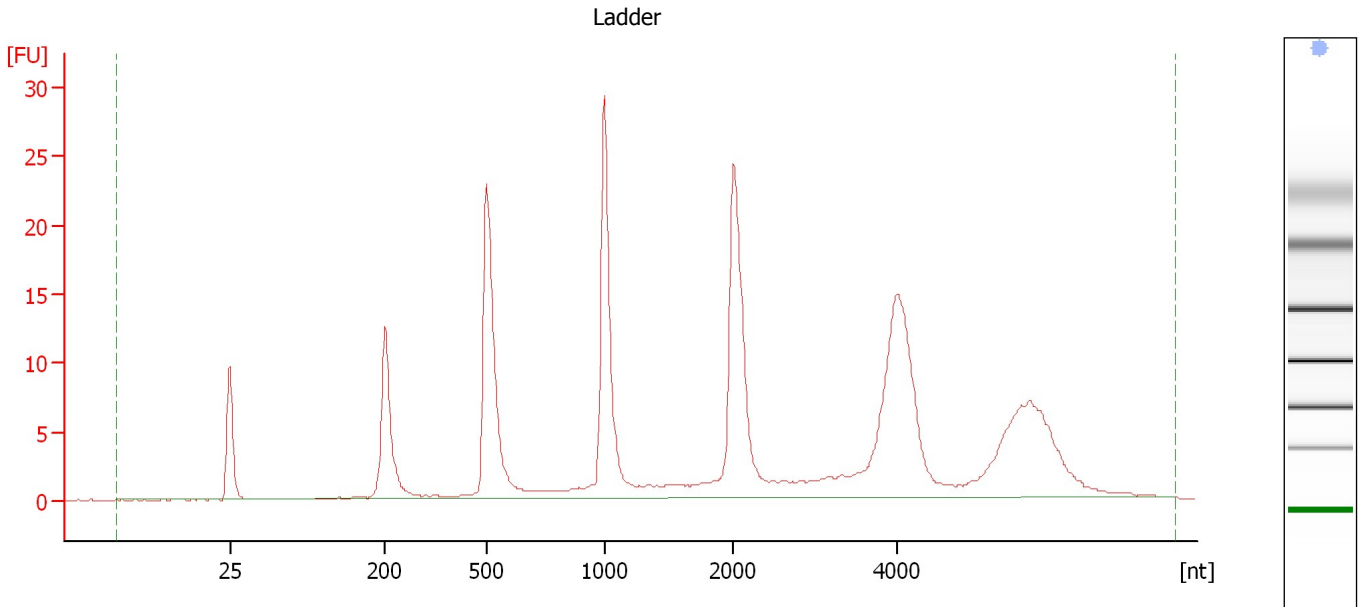
Ladder

Ladder Peak	Size
1	25
2	200
3	500
4	1000
5	2000
6	4000

Assay Class: Eukaryote Total RNA Nano
Data Path: C:\...ents and Settings\Bioanalyzer\2013-10-14\2013-10-14_002.xad

Created: 10/14/2013 12:29:50 PM
Modified: 10/14/2013 12:39:58 PM

Electropherogram Summary



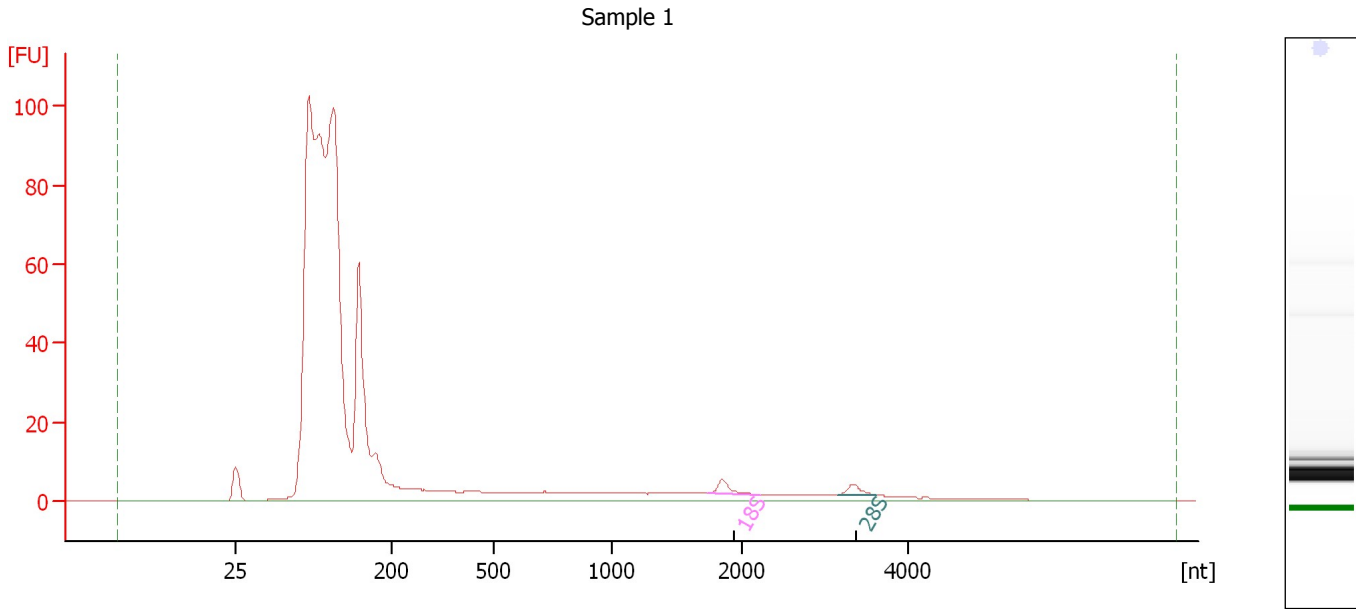
Overall Results for Ladder

RNA Area:	238.0	Result Flagging Color:	
RNA Concentration:	150 ng/μl	Result Flagging Label:	All Other Samples

Assay Class: Eukaryote Total RNA Nano
Data Path: C:\...ents and Settings\Bioanalyzer\2013-10-14\2013-10-14_002.xad

Created: 10/14/2013 12:29:50 PM
Modified: 10/14/2013 12:39:58 PM

Electropherogram Summary Continued ...



Overall Results for sample 1 : Sample 1

RNA Area:	848.0	RNA Integrity Number (RIN):	2.5 (B.02.08)
RNA Concentration:	534 ng/μl	Result Flagging Color:	
rRNA Ratio [28s / 18s]:	0.8	Result Flagging Label:	RIN: 2.50

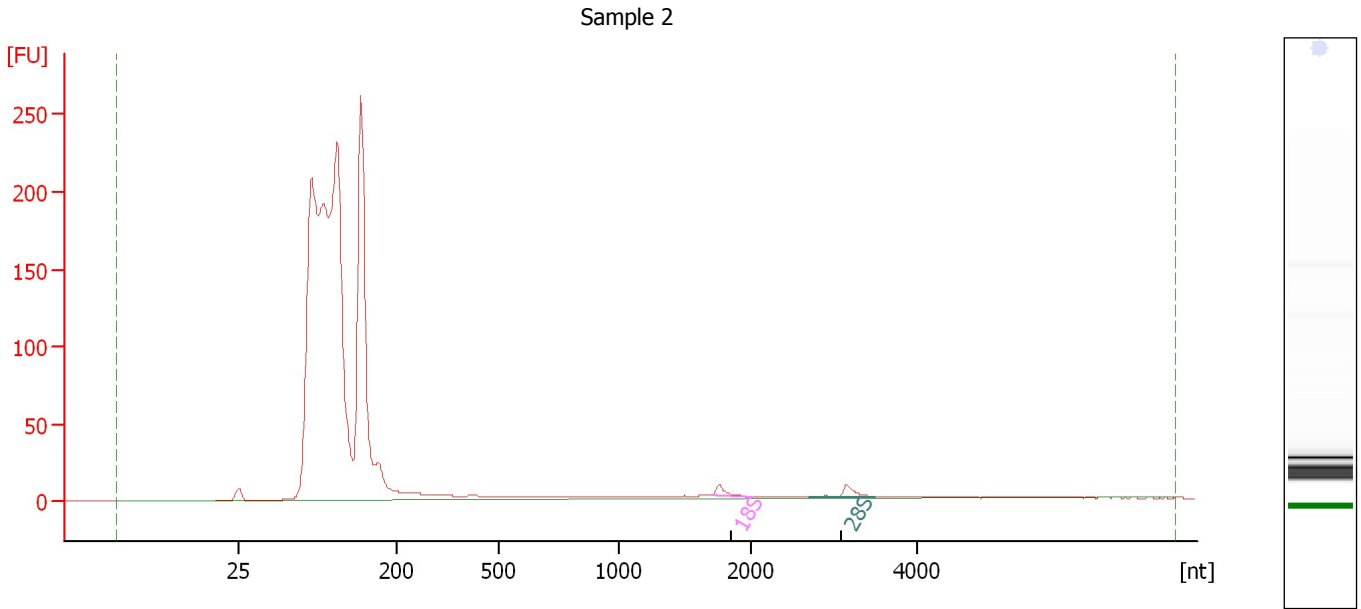
Fragment table for sample 1 : Sample 1

Name	Start Size [nt]	End Size [nt]	Area	% of total Area
18S	1,731	2,210	4.5	0.5
28S	3,156	3,623	3.6	0.4

Assay Class: Eukaryote Total RNA Nano
Data Path: C:\...ents and Settings\Bioanalyzer\2013-10-14\2013-10-14_002.xad

Created: 10/14/2013 12:29:50 PM
Modified: 10/14/2013 12:39:58 PM

Electropherogram Summary Continued ...



Overall Results for sample 2 : Sample 2

RNA Area:	1,772.2	RNA Integrity Number (RIN):	2.6 (B.02.08)
RNA Concentration:	1,117 ng/μl	Result Flagging Color:	
rRNA Ratio [28s / 18s]:	1.3	Result Flagging Label:	RIN: 2.60

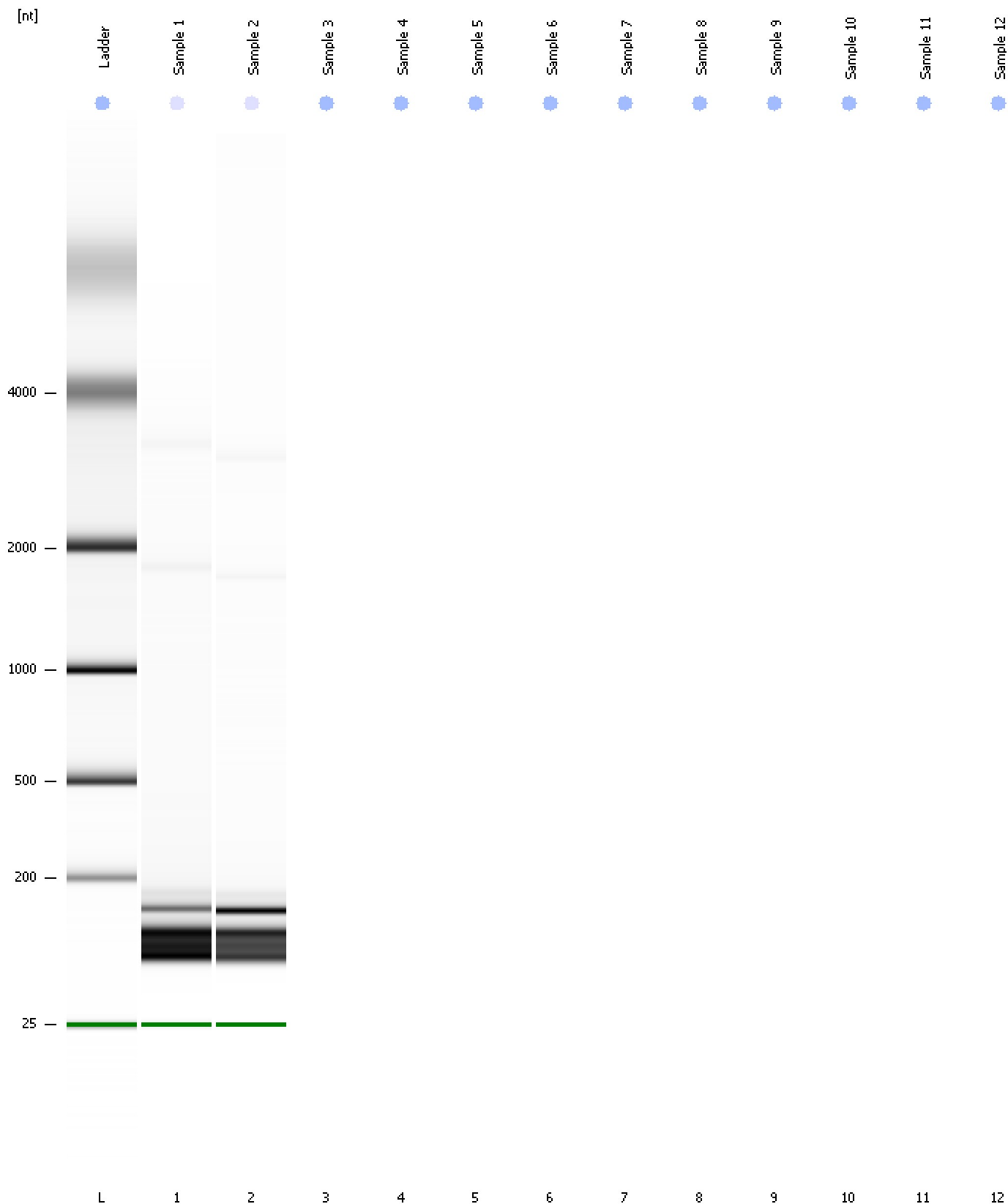
Fragment table for sample 2 : Sample 2

Name	Start Size [nt]	End Size [nt]	Area	% of total Area
18S	1,694	2,043	7.0	0.4
28S	2,699	3,497	9.3	0.5

Assay Class: Eukaryote Total RNA Nano
Data Path: C:\...ents and Settings\Bioanalyzer\2013-10-14\2013-10-14_002.xad

Created: 10/14/2013 12:29:50 PM
Modified: 10/14/2013 12:39:58 PM

Gel Image



Assay Class: Eukaryote Total RNA Nano
Data Path: C:\...ents and Settings\Bioanalyzer\2013-10-14\2013-10-14_002.xad

Created: 10/14/2013 12:29:50 PM
Modified: 10/14/2013 12:39:58 PM

Invalid Samples

- Sample 3 has not been run, no results available.
- Sample 4 has not been run, no results available.
- Sample 5 has not been run, no results available.
- Sample 6 has not been run, no results available.
- Sample 7 has not been run, no results available.
- Sample 8 has not been run, no results available.
- Sample 9 has not been run, no results available.
- Sample 10 has not been run, no results available.
- Sample 11 has not been run, no results available.
- Sample 12 has not been run, no results available.