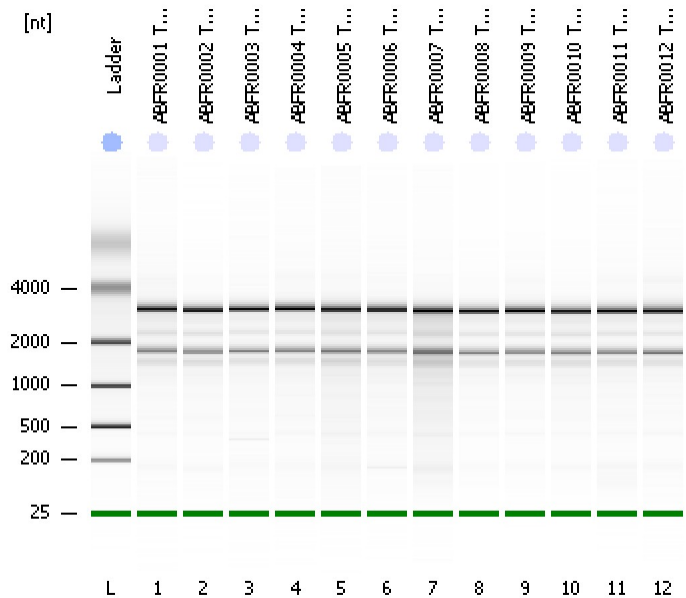


Assay Class: Eukaryote Total RNA Nano
Data Path: C:\...ents and Settings\Bioanalyzer\2013-10-14\2013-10-14_003.xad

Created: 10/14/2013 1:28:28 PM
Modified: 10/14/2013 5:02:15 PM

Electrophoresis File Run Summary

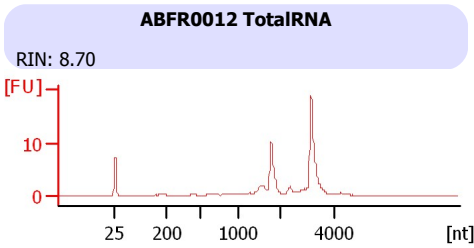
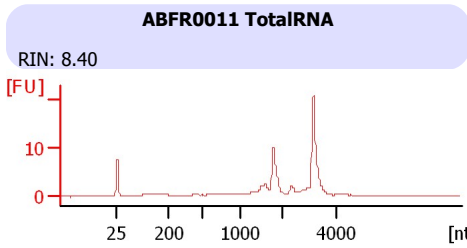
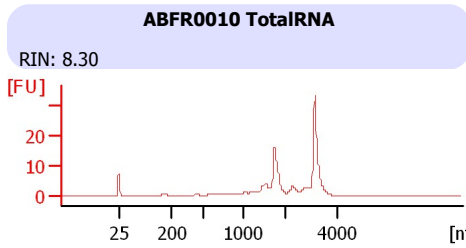
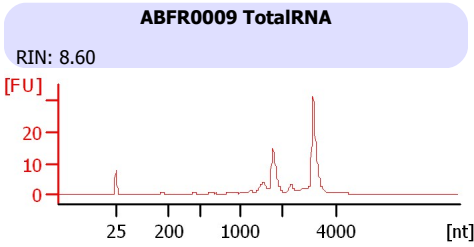
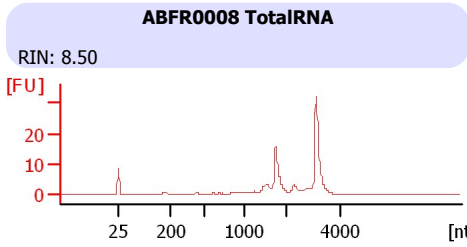
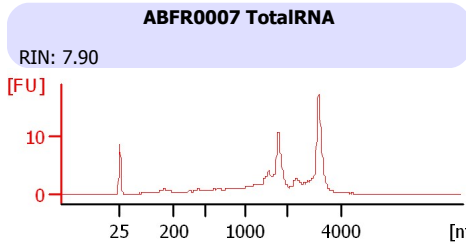
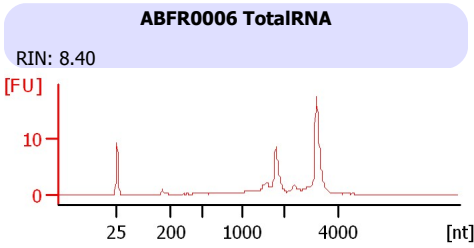
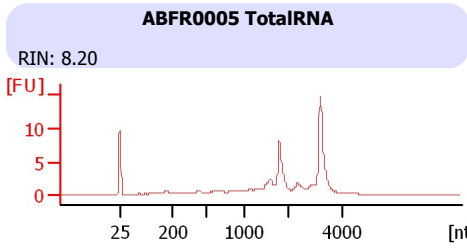
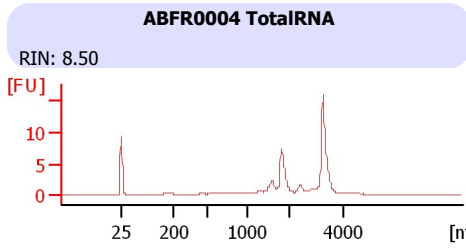
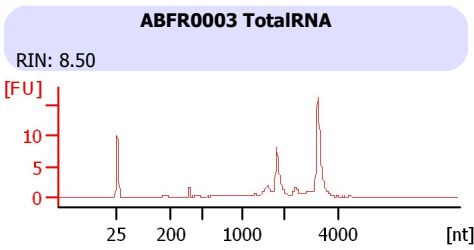
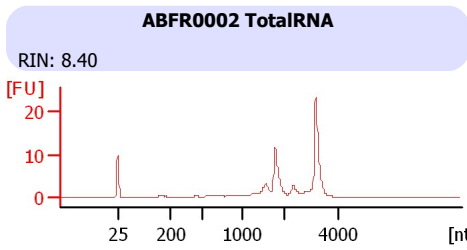
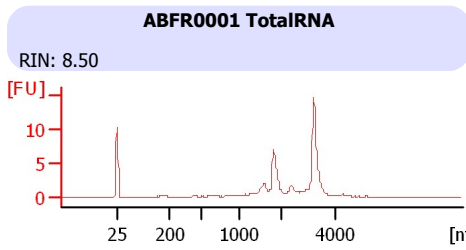


Instrument Information:
 Instrument Name: DE13701086 Firmware: C.01.069
 Serial#: DE13701086 Type: G2938B

Assay Information:
 Assay Origin Path: C:\Program Files\Agilent\2100 bioanalyzer\2100 expert\assays\RNA\Eukaryote Total RNA Nano Series II.xsy
 Assay Class: Eukaryote Total RNA Nano
 Version: 2.6
 Assay Comments: Total RNA Analysis ng sensitivity (Eukaryote)

Chip Information:
 Chip Lot #:
 Reagent Kit Lot #:
 Chip Comments:

© Copyright 2003 - 2009 Agilent Technologies, Inc.



Assay Class: Eukaryote Total RNA Nano
 Data Path: C:\...ents and Settings\Bioanalyzer\2013-10-14\2013-10-14_003.xad

Created: 10/14/2013 1:28:28 PM
 Modified: 10/14/2013 5:02:15 PM

Electrophoresis File Run Summary (Chip Summary)

Sample Name	Sample Comment	Status	Result Label	Result Color
ABFR0001 TotalRNA		✓	RIN: 8.50	
ABFR0002 TotalRNA		✓	RIN: 8.40	
ABFR0003 TotalRNA		✓	RIN: 8.50	
ABFR0004 TotalRNA		✓	RIN: 8.50	
ABFR0005 TotalRNA		✓	RIN: 8.20	
ABFR0006 TotalRNA		✓	RIN: 8.40	
ABFR0007 TotalRNA		✓	RIN: 7.90	
ABFR0008 TotalRNA		✓	RIN: 8.50	
ABFR0009 TotalRNA		✓	RIN: 8.60	
ABFR0010 TotalRNA		✓	RIN: 8.30	
ABFR0011 TotalRNA		✓	RIN: 8.40	
ABFR0012 TotalRNA		✓	RIN: 8.70	
Ladder		✓	All Other Samples	

Chip Lot #

Reagent Kit Lot #

Chip Comments :

Assay Class: Eukaryote Total RNA Nano
Data Path: C:\...ents and Settings\Bioanalyzer\2013-10-14\2013-10-14_003.xad

Created: 10/14/2013 1:28:28 PM
Modified: 10/14/2013 5:02:15 PM

Electrophoresis Assay Details

General Analysis Settings

Number of Available Sample and Ladder Wells (Max.) : 13
Minimum Visible Range [s] : 17
Maximum Visible Range [s] : 70
Start Analysis Time Range [s] : 19
End Analysis Time Range [s] : 69
Ladder Concentration [ng/ μ l] : 150
Lower Marker Concentration [ng/ μ l] : 0
Upper Marker Concentration [ng/ μ l] : 0
Used Lower Marker for Quantitation
Standard Curve Fit is Logarithmic
Show Data Aligned to Lower Marker

Integrator Settings

Integration Start Time [s] : 19
Integration End Time [s] : 69
Slope Threshold : 0.6
Height Threshold [FU] : 0.5
Area Threshold : 0.2
Width Threshold [s] : 0.5
Baseline Plateau [s] : 6

Filter Settings

Filter Width [s] : 0.5
Polynomial Order : 4

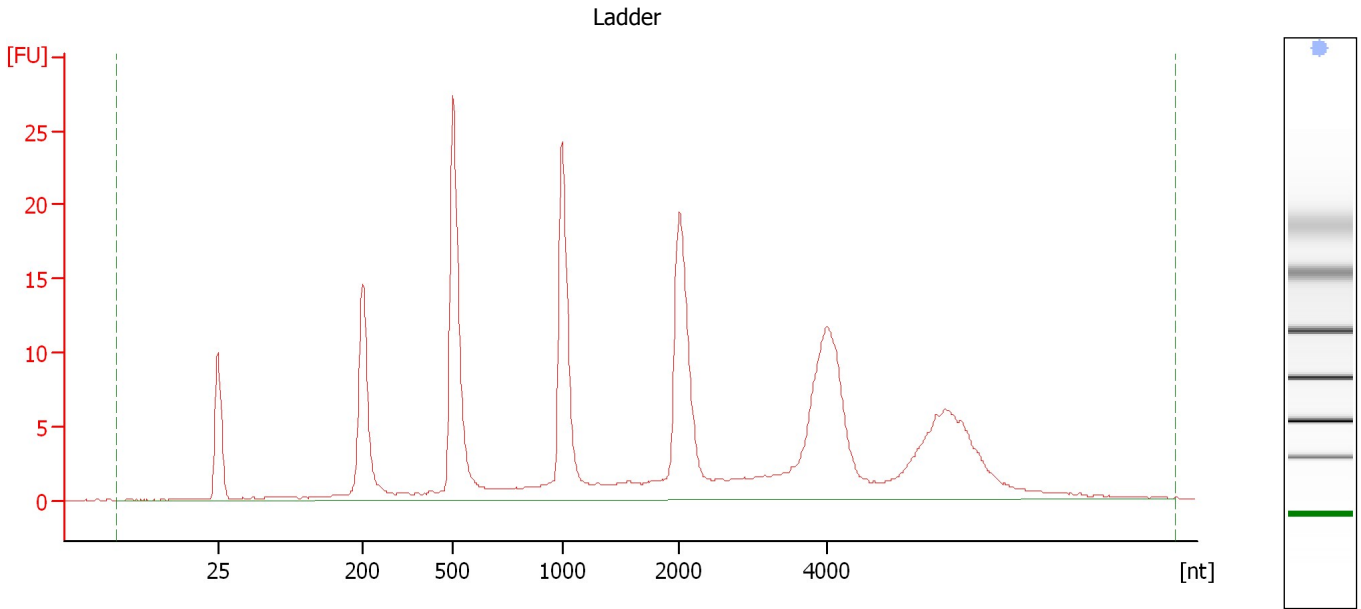
Ladder

Ladder Peak	Size
1	25
2	200
3	500
4	1000
5	2000
6	4000

Assay Class: Eukaryote Total RNA Nano
Data Path: C:\...ents and Settings\Bioanalyzer\2013-10-14\2013-10-14_003.xad

Created: 10/14/2013 1:28:28 PM
Modified: 10/14/2013 5:02:15 PM

Electropherogram Summary



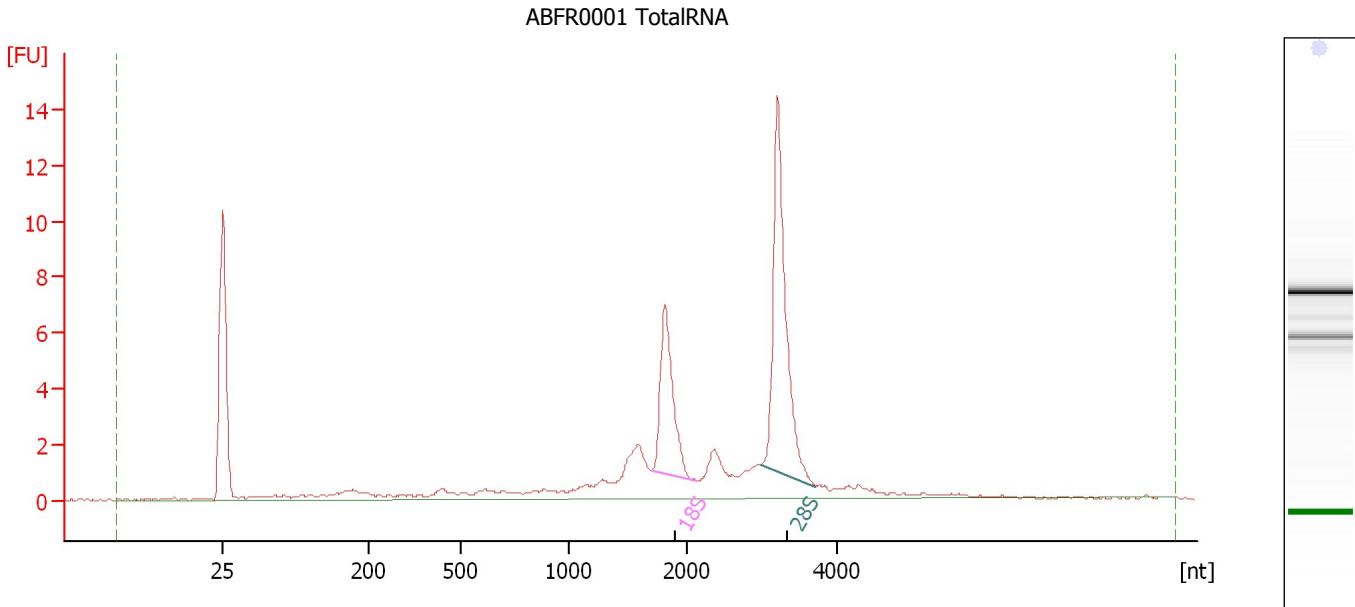
Overall Results for Ladder

RNA Area:	238.8	Result Flagging Color:	
RNA Concentration:	150 ng/ μ l	Result Flagging Label:	All Other Samples

Assay Class: Eukaryote Total RNA Nano
 Data Path: C:\...ents and Settings\Bioanalyzer\2013-10-14\2013-10-14_003.xad

Created: 10/14/2013 1:28:28 PM
 Modified: 10/14/2013 5:02:15 PM

Electropherogram Summary Continued ...



Overall Results for sample 1 : ABRF0001 TotalRNA

RNA Area:	62.2	RNA Integrity Number (RIN):	8.5 (B.02.08)
RNA Concentration:	39 ng/μl	Result Flagging Color:	
rRNA Ratio [28s / 18s]:	1.9	Result Flagging Label:	RIN: 8.50

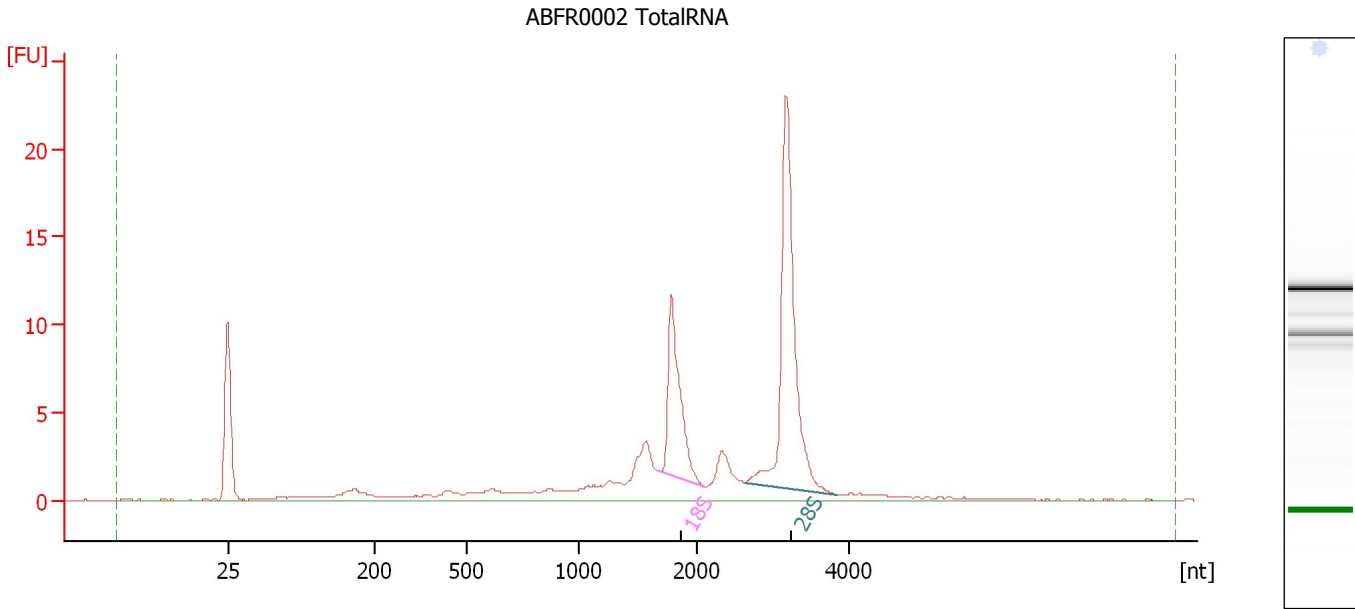
Fragment table for sample 1 : ABRF0001 TotalRNA

Name	Start Size [nt]	End Size [nt]	Area	% of total Area
18S	1,703	2,134	9.0	14.5
28S	2,991	3,718	17.5	28.2

Assay Class: Eukaryote Total RNA Nano
Data Path: C:\...ents and Settings\Bioanalyzer\2013-10-14\2013-10-14_003.xad

Created: 10/14/2013 1:28:28 PM
Modified: 10/14/2013 5:02:15 PM

Electropherogram Summary Continued ...



Overall Results for sample 2 : ABRF0002 TotalRNA

RNA Area: 93.8 RNA Integrity Number (RIN): 8.4 (B.02.08)
RNA Concentration: 59 ng/μl Result Flagging Color:
rRNA Ratio [28s / 18s]: 2.1 Result Flagging Label: RIN: 8.40

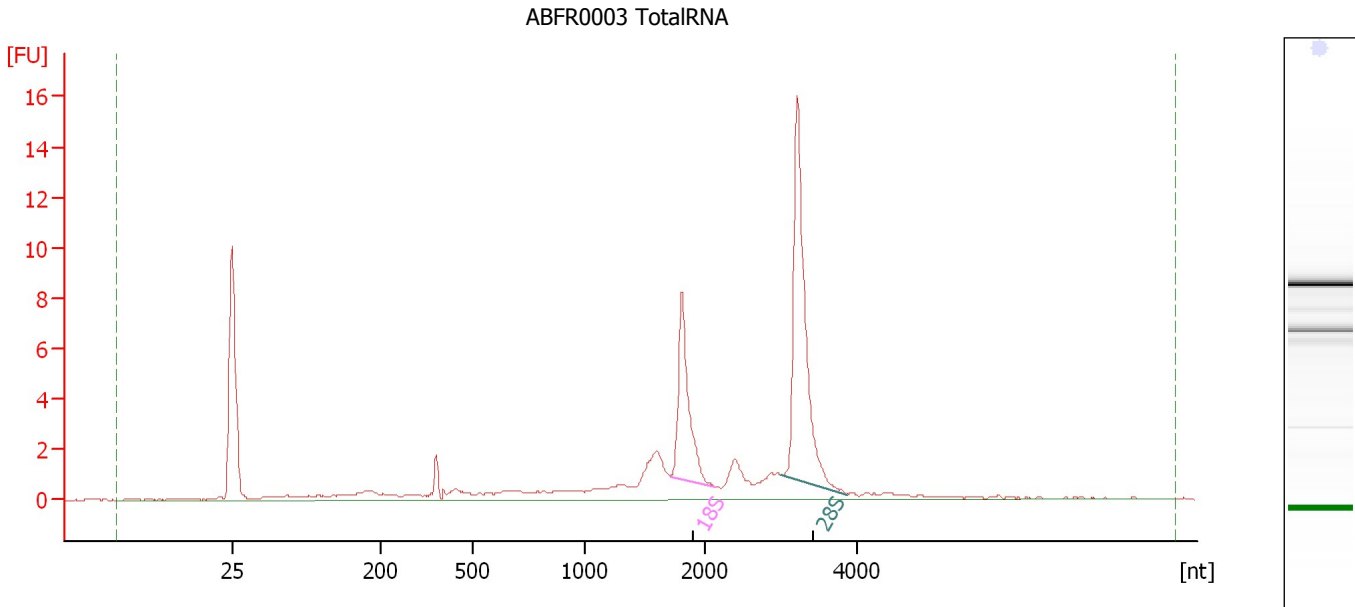
Fragment table for sample 2 : ABRF0002 TotalRNA

Name	Start Size [nt]	End Size [nt]	Area	% of total Area
18S	1,684	2,098	14.2	15.1
28S	2,635	3,850	30.4	32.4

Assay Class: Eukaryote Total RNA Nano
Data Path: C:\...ents and Settings\Bioanalyzer\2013-10-14\2013-10-14_003.xad

Created: 10/14/2013 1:28:28 PM
Modified: 10/14/2013 5:02:15 PM

Electropherogram Summary Continued ...



Overall Results for sample 3 : ABRF0003 TotalRNA

RNA Area: 61.7 RNA Integrity Number (RIN): 8.5 (B.02.08)
RNA Concentration: 39 ng/μl Result Flagging Color:
rRNA Ratio [28s / 18s]: 2.1 Result Flagging Label: RIN: 8.50

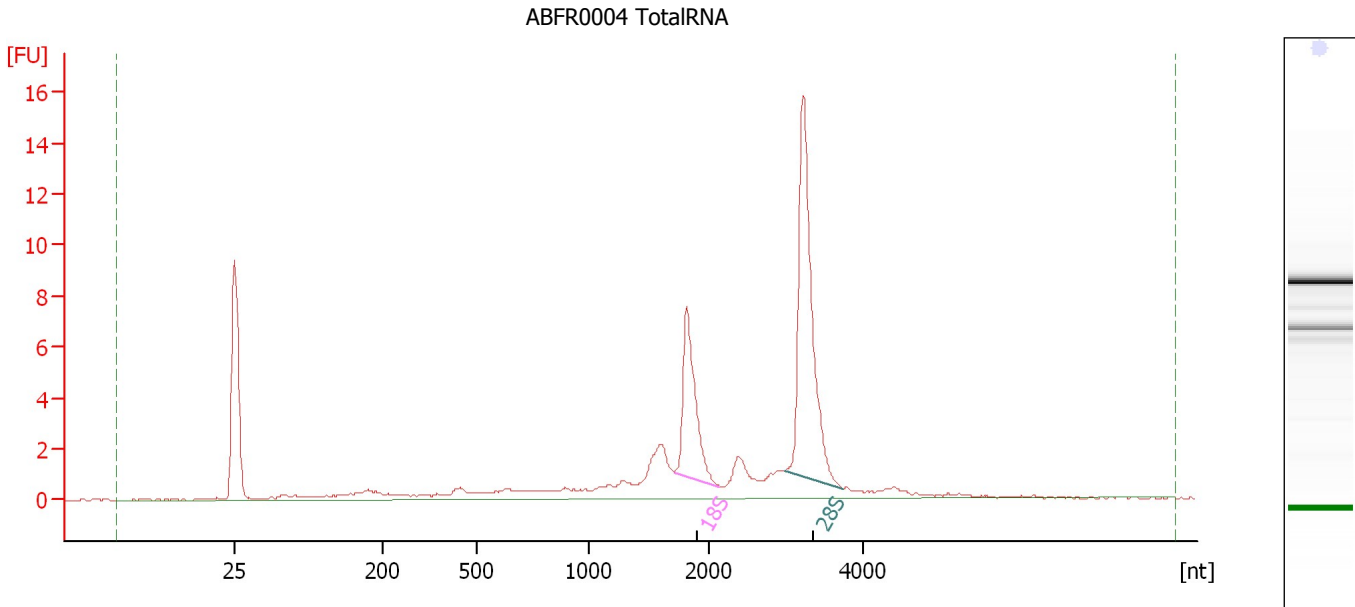
Fragment table for sample 3 : ABRF0003 TotalRNA

Name	Start Size [nt]	End Size [nt]	Area	% of total Area
18S	1,709	2,118	8.9	14.4
28S	3,001	3,855	18.2	29.6

Assay Class: Eukaryote Total RNA Nano
Data Path: C:\...ents and Settings\Bioanalyzer\2013-10-14\2013-10-14_003.xad

Created: 10/14/2013 1:28:28 PM
Modified: 10/14/2013 5:02:15 PM

Electropherogram Summary Continued ...



Overall Results for sample 4 : ABRF0004 TotalRNA

RNA Area: 65.6 RNA Integrity Number (RIN): 8.5 (B.02.08)
RNA Concentration: 41 ng/μl Result Flagging Color:
rRNA Ratio [28s / 18s]: 2.1 Result Flagging Label: RIN: 8.50

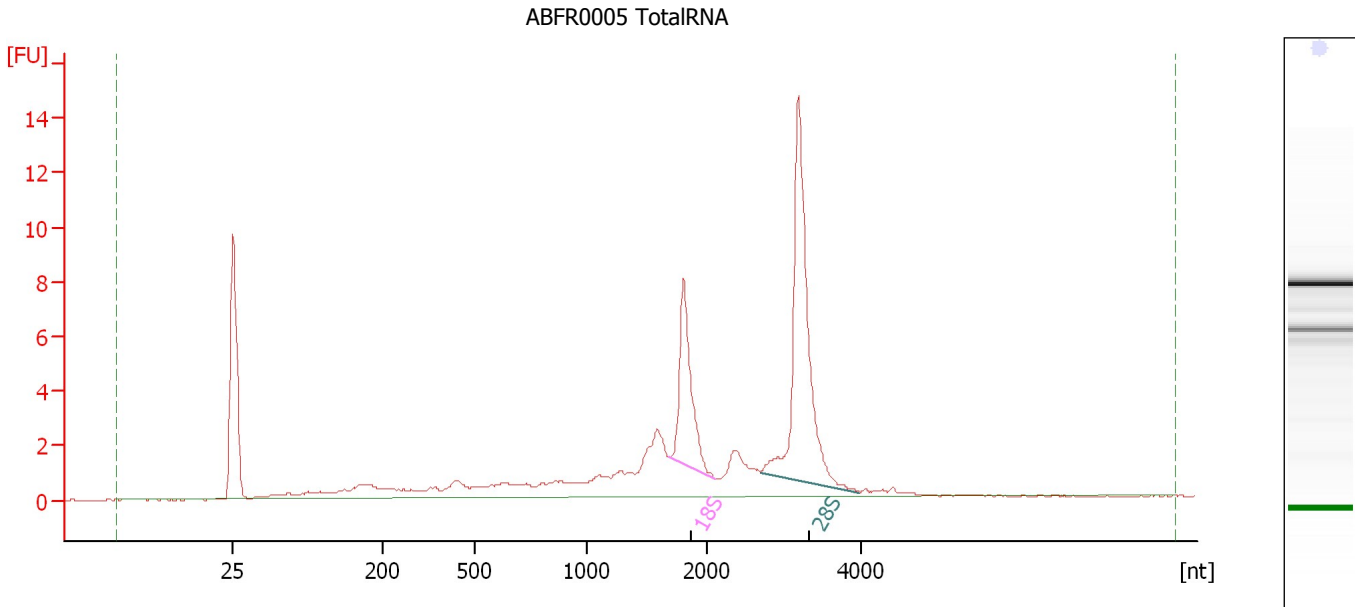
Fragment table for sample 4 : ABRF0004 TotalRNA

Name	Start Size [nt]	End Size [nt]	Area	% of total Area
18S	1,712	2,134	9.3	14.2
28S	3,000	3,740	19.9	30.3

Assay Class: Eukaryote Total RNA Nano
Data Path: C:\...ents and Settings\Bioanalyzer\2013-10-14\2013-10-14_003.xad

Created: 10/14/2013 1:28:28 PM
Modified: 10/14/2013 5:02:15 PM

Electropherogram Summary Continued ...



Overall Results for sample 5 : ABRF0005 TotalRNA

RNA Area: 70.3 RNA Integrity Number (RIN): 8.2 (B.02.08)
RNA Concentration: 44 ng/μl Result Flagging Color:
rRNA Ratio [28s / 18s]: 2.2 Result Flagging Label: RIN: 8.20

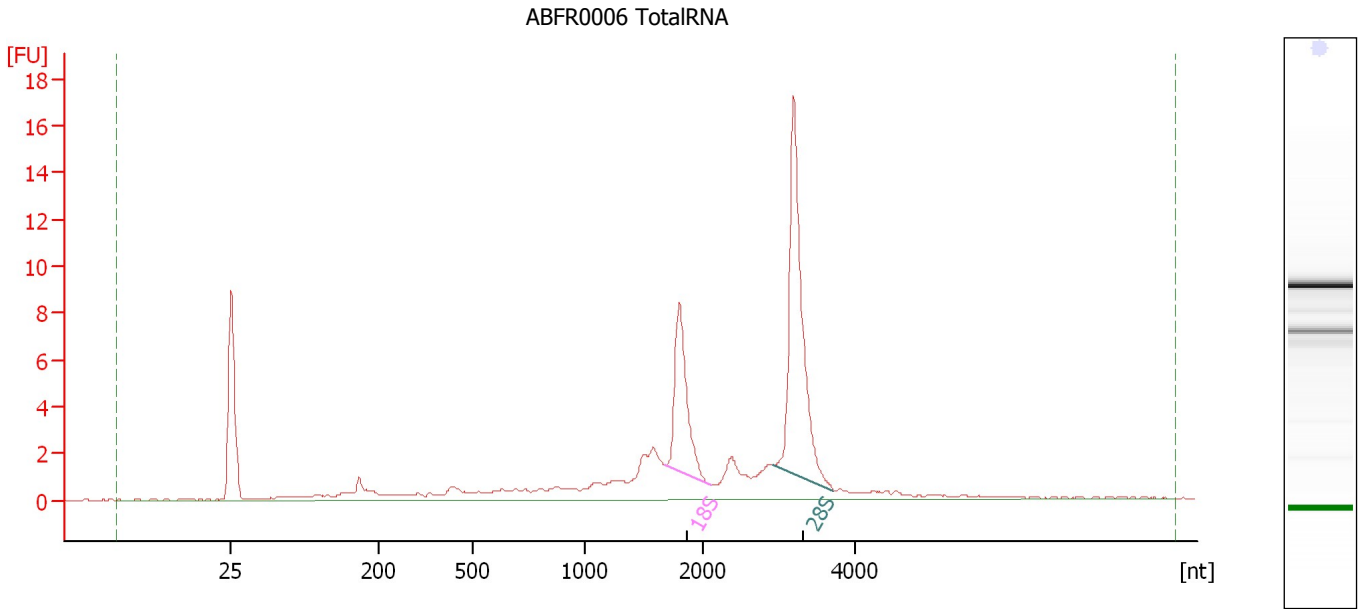
Fragment table for sample 5 : ABRF0005 TotalRNA

Name	Start Size [nt]	End Size [nt]	Area	% of total Area
18S	1,675	2,105	9.2	13.2
28S	2,693	3,993	20.7	29.4

Assay Class: Eukaryote Total RNA Nano
Data Path: C:\...ents and Settings\Bioanalyzer\2013-10-14\2013-10-14_003.xad

Created: 10/14/2013 1:28:28 PM
Modified: 10/14/2013 5:02:15 PM

Electropherogram Summary Continued ...



Overall Results for sample 6 : ABRF0006 TotalRNA

RNA Area: 74.1 RNA Integrity Number (RIN): 8.4 (B.02.08)
RNA Concentration: 47 ng/μl Result Flagging Color:
rRNA Ratio [28s / 18s]: 2.1 Result Flagging Label: RIN: 8.40

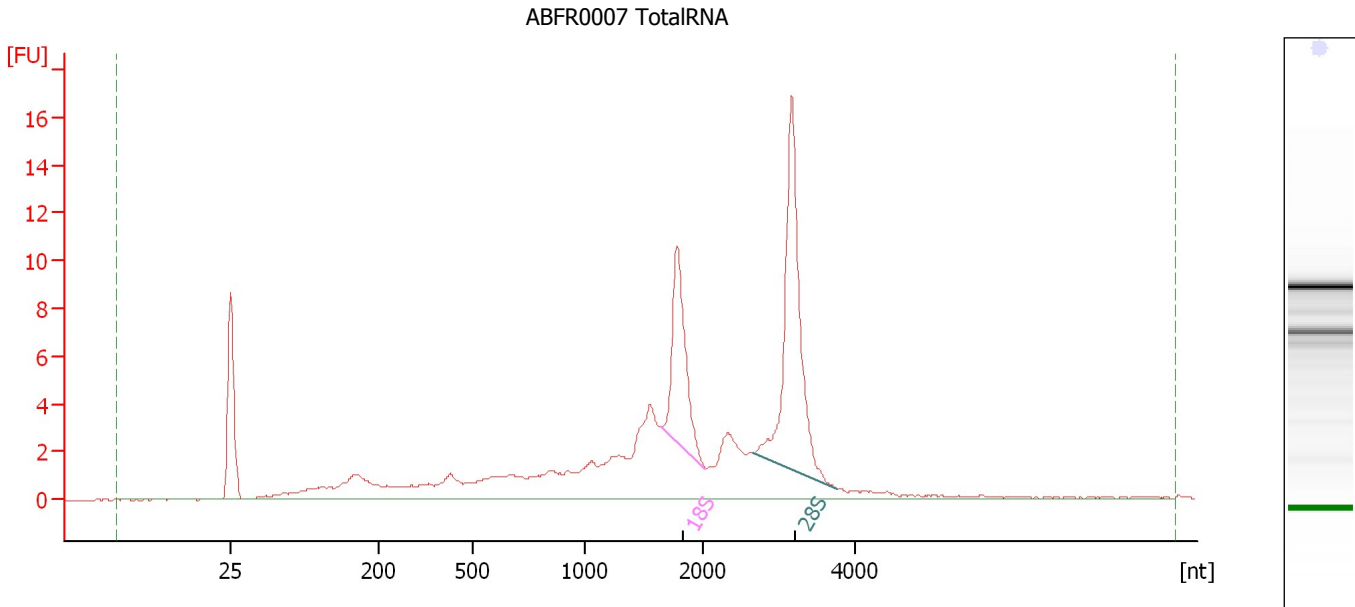
Fragment table for sample 6 : ABRF0006 TotalRNA

Name	Start Size [nt]	End Size [nt]	Area	% of total Area
18S	1,671	2,088	10.1	13.7
28S	2,917	3,717	21.1	28.5

Assay Class: Eukaryote Total RNA Nano
 Data Path: C:\...ents and Settings\Bioanalyzer\2013-10-14\2013-10-14_003.xad

Created: 10/14/2013 1:28:28 PM
 Modified: 10/14/2013 5:02:15 PM

Electropherogram Summary Continued ...



Overall Results for sample 7 : ABRF0007 TotalRNA

RNA Area:	115.2	RNA Integrity Number (RIN):	7.9 (B.02.08)
RNA Concentration:	72 ng/μl	Result Flagging Color:	
rRNA Ratio [28s / 18s]:	1.9	Result Flagging Label:	RIN: 7.90

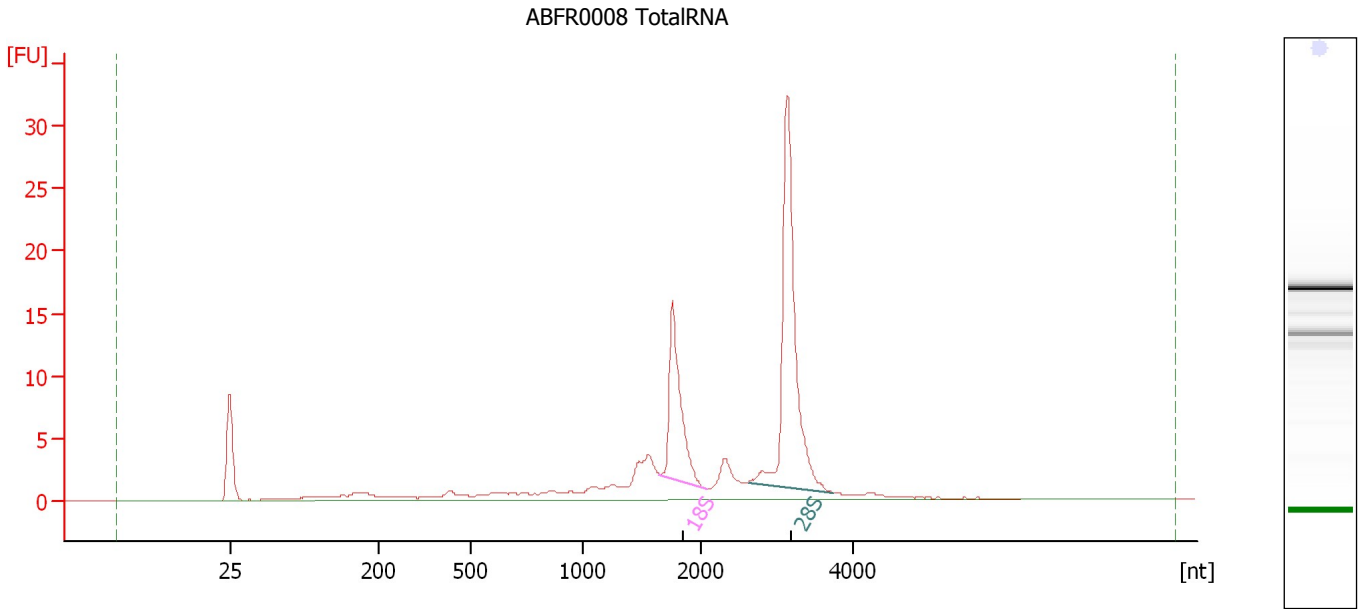
Fragment table for sample 7 : ABRF0007 TotalRNA

Name	Start Size [nt]	End Size [nt]	Area	% of total Area
18S	1,644	2,032	12.5	10.9
28S	2,664	3,759	24.2	21.0

Assay Class: Eukaryote Total RNA Nano
Data Path: C:\...ents and Settings\Bioanalyzer\2013-10-14\2013-10-14_003.xad

Created: 10/14/2013 1:28:28 PM
Modified: 10/14/2013 5:02:15 PM

Electropherogram Summary Continued ...



Overall Results for sample 8 : ABRF0008 TotalRNA

RNA Area: 113.7 RNA Integrity Number (RIN): 8.5 (B.02.08)
RNA Concentration: 71 ng/μl Result Flagging Color:
rRNA Ratio [28s / 18s]: 2.2 Result Flagging Label: RIN: 8.50

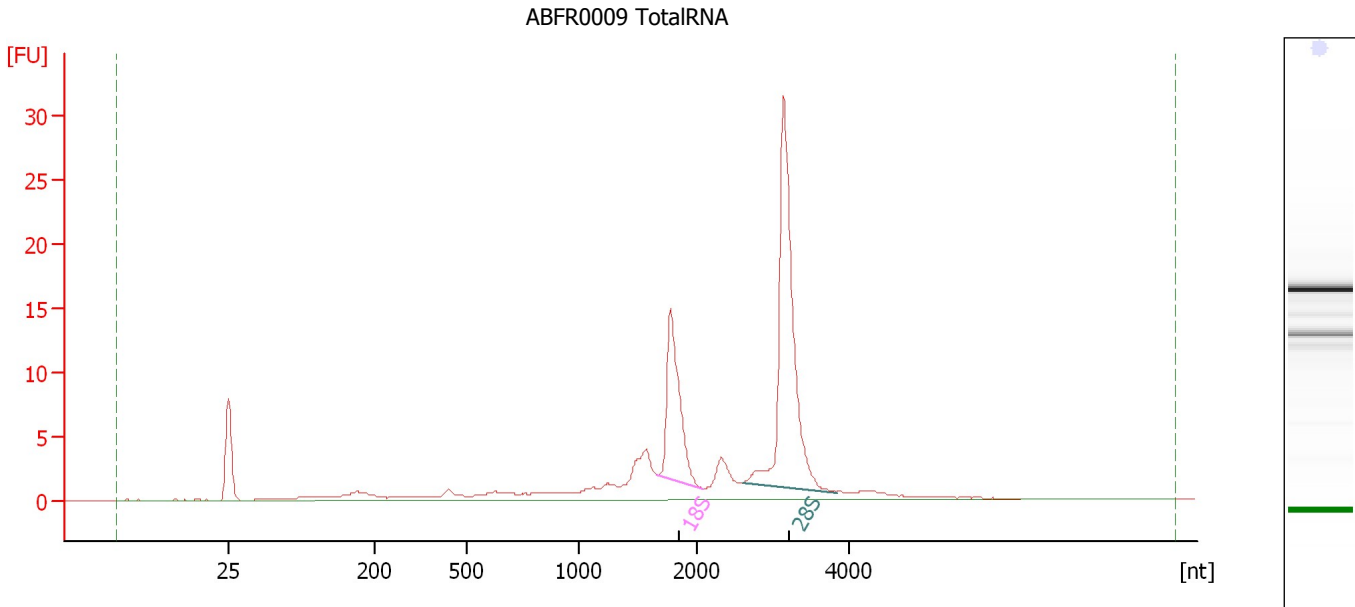
Fragment table for sample 8 : ABRF0008 TotalRNA

Name	Start Size [nt]	End Size [nt]	Area	% of total Area
18S	1,652	2,073	18.2	16.0
28S	2,622	3,747	40.3	35.5

Assay Class: Eukaryote Total RNA Nano
 Data Path: C:\...ents and Settings\Bioanalyzer\2013-10-14\2013-10-14_003.xad

Created: 10/14/2013 1:28:28 PM
 Modified: 10/14/2013 5:02:15 PM

Electropherogram Summary Continued ...



Overall Results for sample 9 : ABRF0009 TotalRNA

RNA Area:	118.2	RNA Integrity Number (RIN):	8.6 (B.02.08)
RNA Concentration:	74 ng/μl	Result Flagging Color:	
rRNA Ratio [28s / 18s]:	2.2	Result Flagging Label:	RIN: 8.60

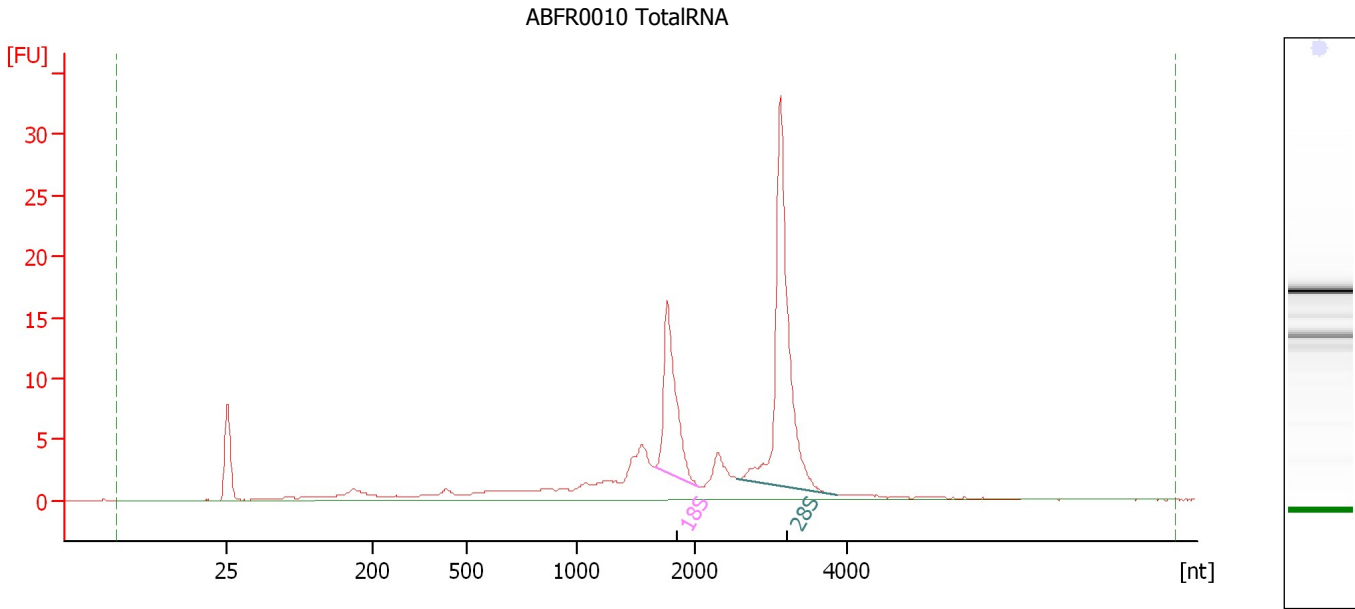
Fragment table for sample 9 : ABRF0009 TotalRNA

Name	Start Size [nt]	End Size [nt]	Area	% of total Area
18S	1,657	2,070	19.4	16.4
28S	2,593	3,836	43.6	36.9

Assay Class: Eukaryote Total RNA Nano
Data Path: C:\...ents and Settings\Bioanalyzer\2013-10-14\2013-10-14_003.xad

Created: 10/14/2013 1:28:28 PM
Modified: 10/14/2013 5:02:15 PM

Electropherogram Summary Continued ...



Overall Results for sample 10 : ABRF0010 TotalRNA

RNA Area: 134.3 RNA Integrity Number (RIN): 8.3 (B.02.08)
RNA Concentration: 84 ng/μl Result Flagging Color:
rRNA Ratio [28s / 18s]: 2.1 Result Flagging Label: RIN: 8.30

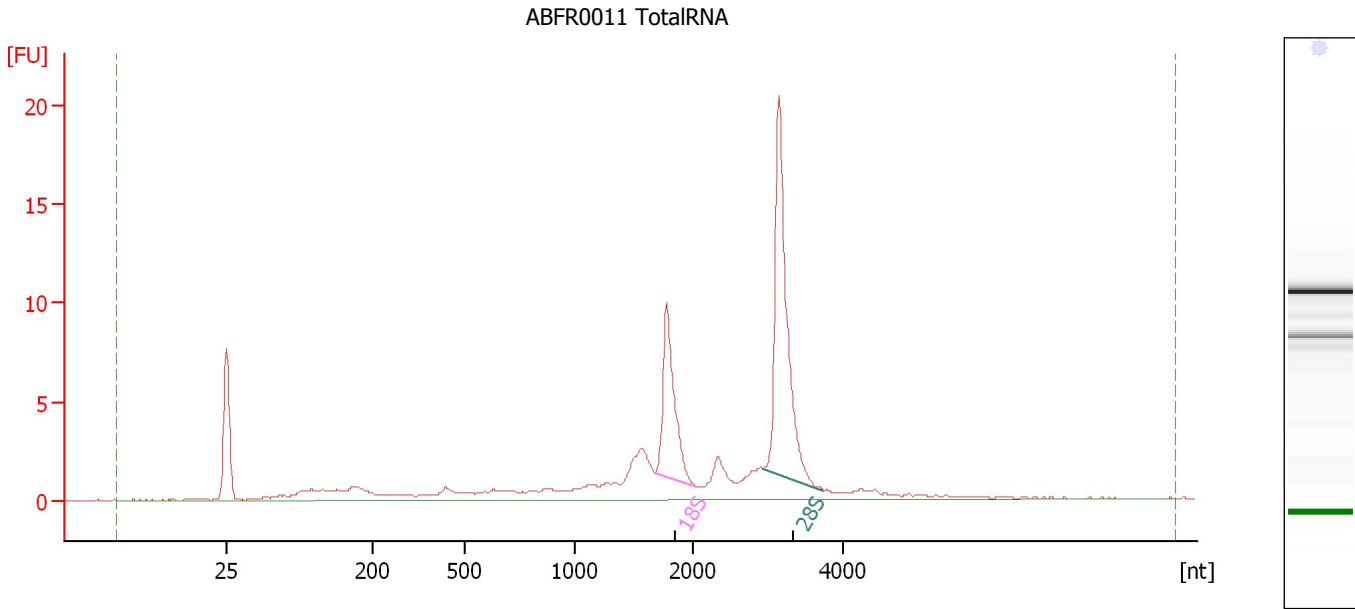
Fragment table for sample 10 : ABRF0010 TotalRNA

Name	Start Size [nt]	End Size [nt]	Area	% of total Area
18S	1,665	2,055	20.0	14.9
28S	2,564	3,881	43.0	32.0

Assay Class: Eukaryote Total RNA Nano
Data Path: C:\...ents and Settings\Bioanalyzer\2013-10-14\2013-10-14_003.xad

Created: 10/14/2013 1:28:28 PM
Modified: 10/14/2013 5:02:15 PM

Electropherogram Summary Continued ...



Overall Results for sample 11 : ABR0011 TotalRNA

RNA Area: 86.3 RNA Integrity Number (RIN): 8.4 (B.02.08)
RNA Concentration: 54 ng/μl Result Flagging Color:
rRNA Ratio [28s / 18s]: 2.0 Result Flagging Label: RIN: 8.40

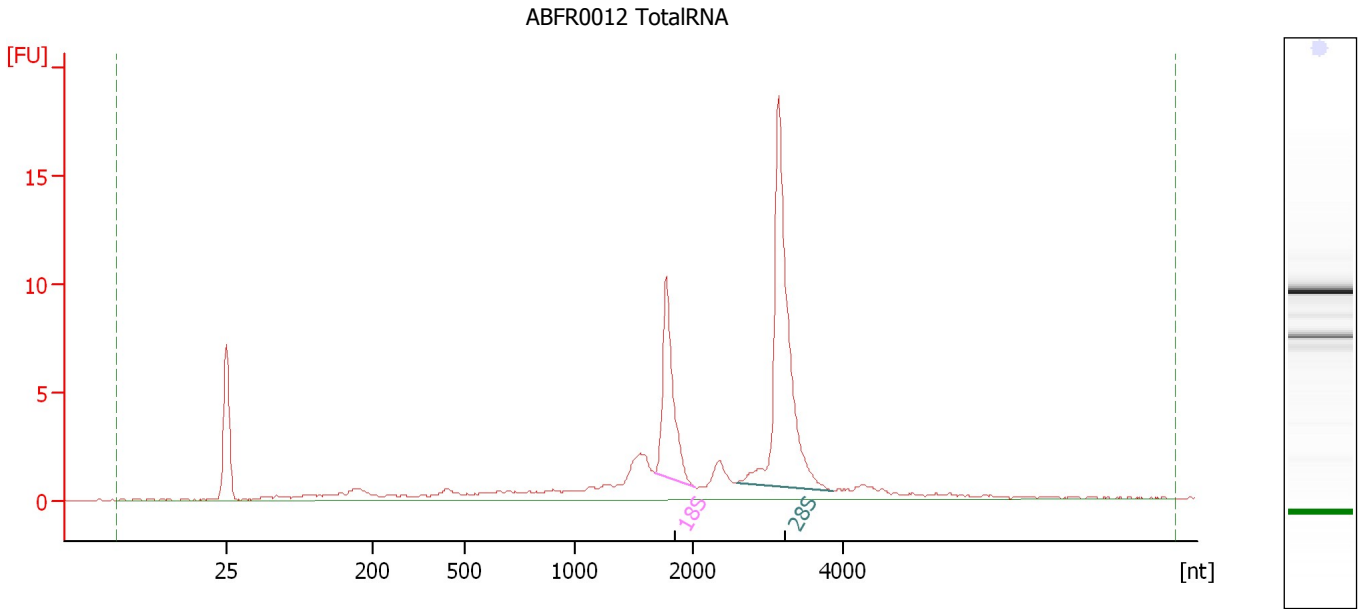
Fragment table for sample 11 : ABR0011 TotalRNA

Name	Start Size [nt]	End Size [nt]	Area	% of total Area
18S	1,672	2,039	11.8	13.7
28S	2,918	3,727	24.1	27.9

Assay Class: Eukaryote Total RNA Nano
Data Path: C:\...ents and Settings\Bioanalyzer\2013-10-14\2013-10-14_003.xad

Created: 10/14/2013 1:28:28 PM
Modified: 10/14/2013 5:02:15 PM

Electropherogram Summary Continued ...



Overall Results for sample 12 : ABR0012 TotalRNA

RNA Area: 78.3 RNA Integrity Number (RIN): 8.7 (B.02.08)
RNA Concentration: 49 ng/μl Result Flagging Color:
rRNA Ratio [28s / 18s]: 2.3 Result Flagging Label: RIN: 8.70

Fragment table for sample 12 : ABR0012 TotalRNA

Name	Start Size [nt]	End Size [nt]	Area	% of total Area
18S	1,672	2,025	11.4	14.5
28S	2,578	3,869	26.7	34.0

Assay Class: Eukaryote Total RNA Nano
Data Path: C:\...ents and Settings\Bioanalyzer\2013-10-14\2013-10-14_003.xad

Created: 10/14/2013 1:28:28 PM
Modified: 10/14/2013 5:02:15 PM

Gel Image

