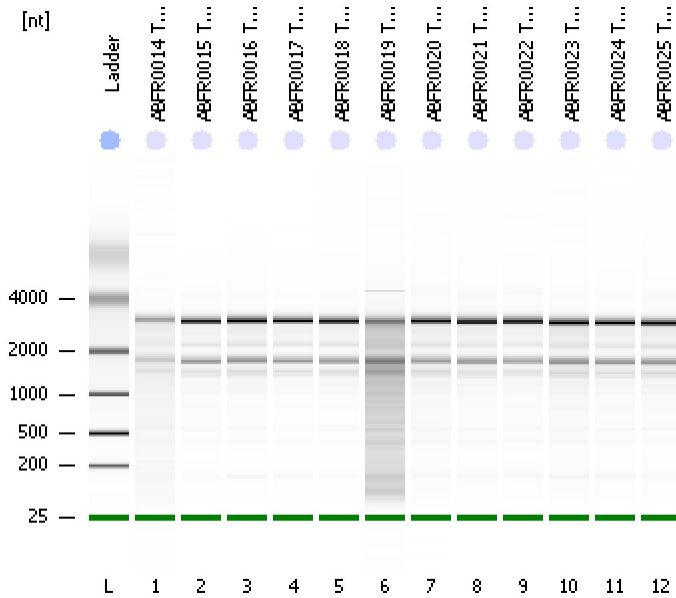


Assay Class: Eukaryote Total RNA Nano
Data Path: C:\...ents and Settings\Bioanalyzer\2013-10-14\2013-10-14_006.xad

Created: 10/14/2013 4:31:13 PM
Modified: 10/17/2013 2:48:36 PM

Electrophoresis File Run Summary



Instrument Information:

Instrument Name: DE13701086 Firmware: C.01.069
Serial#: DE13701086 Type: G2938B

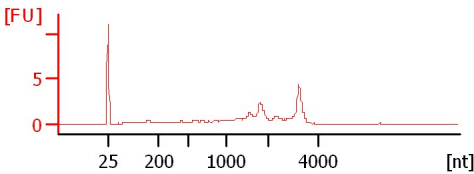
Assay Information:

Assay Origin Path: C:\Program Files\Agilent\2100 bioanalyzer\2100 expert\assays\RNA\Eukaryote Total RNA Nano Series II.xsy
Assay Class: Eukaryote Total RNA Nano
Version: 2.6
Assay Comments: Total RNA Analysis ng sensitivity (Eukaryote)
© Copyright 2003 - 2009 Agilent Technologies, Inc.

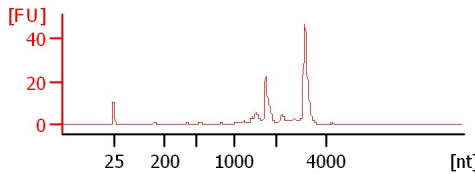
Chip Information:

Chip Lot #:
Reagent Kit Lot #:
Chip Comments:

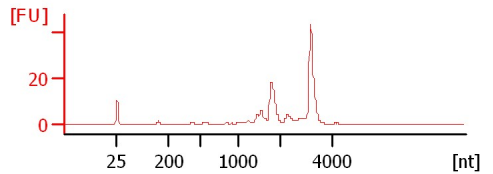
ABFR0014 Total RNA
RIN: 7



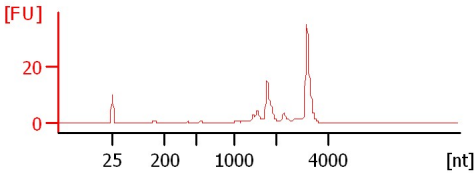
ABFR0015 Total RNA
RIN: 8.50



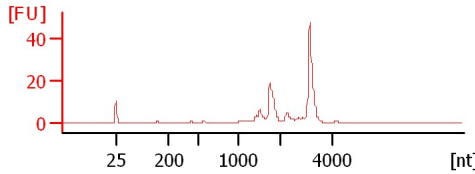
ABFR0016 Total RNA
RIN: 8.40



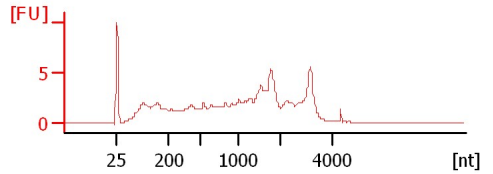
ABFR0017 Total RNA
RIN: 8.50



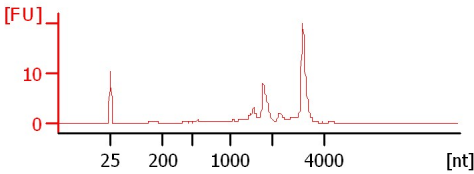
ABFR0018 Total RNA
RIN: 8.50



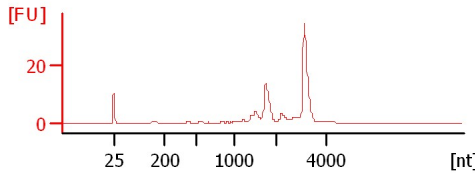
ABFR0019 Total RNA
RIN: 4.50



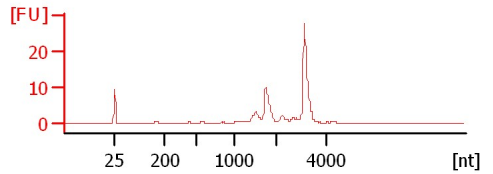
ABFR0020 Total RNA
RIN: 8.30



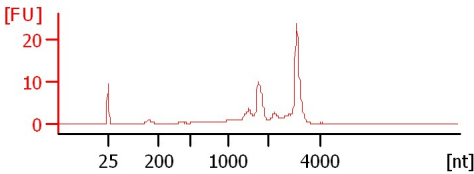
ABFR0021 Total RNA
RIN: 8.40



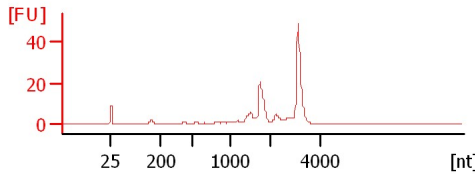
ABFR0022 Total RNA
RIN: 8.40



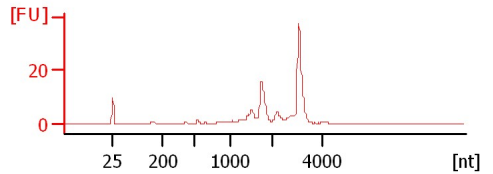
ABFR0023 Total RNA
RIN: 8.30



ABFR0024 Total RNA
RIN: 8.30



ABFR0025 Total RNA
RIN: 8.30



Assay Class: Eukaryote Total RNA Nano
 Data Path: C:\...ents and Settings\Bioanalyzer\2013-10-14\2013-10-14_006.xad

Created: 10/14/2013 4:31:13 PM
 Modified: 10/17/2013 2:48:36 PM

Electrophoresis File Run Summary (Chip Summary)

Sample Name	Sample Comment	Status	Result Label	Result Color
ABFR0014 Total RNA		✓	RIN:7	
ABFR0015 Total RNA		✓	RIN: 8.50	
ABFR0016 Total RNA		✓	RIN: 8.40	
ABFR0017 Total RNA		✓	RIN: 8.50	
ABFR0018 Total RNA		✓	RIN: 8.50	
ABFR0019 Total RNA		✓	RIN: 4.50	
ABFR0020 Total RNA		✓	RIN: 8.30	
ABFR0021 Total RNA		✓	RIN: 8.40	
ABFR0022 Total RNA		✓	RIN: 8.40	
ABFR0023 Total RNA		✓	RIN: 8.30	
ABFR0024 Total RNA		✓	RIN: 8.30	
ABFR0025 Total RNA		✓	RIN: 8.30	
Ladder		✓	All Other Samples	

Chip Lot #

Reagent Kit Lot #

Chip Comments :

Assay Class: Eukaryote Total RNA Nano
Data Path: C:\...ents and Settings\Bioanalyzer\2013-10-14\2013-10-14_006.xad

Created: 10/14/2013 4:31:13 PM
Modified: 10/17/2013 2:48:36 PM

Electrophoresis Assay Details

General Analysis Settings

Number of Available Sample and Ladder Wells (Max.) : 13
Minimum Visible Range [s] : 17
Maximum Visible Range [s] : 70
Start Analysis Time Range [s] : 19
End Analysis Time Range [s] : 69
Ladder Concentration [ng/ μ l] : 150
Lower Marker Concentration [ng/ μ l] : 0
Upper Marker Concentration [ng/ μ l] : 0
Used Lower Marker for Quantitation
Standard Curve Fit is Logarithmic
Show Data Aligned to Lower Marker

Integrator Settings

Integration Start Time [s] : 19
Integration End Time [s] : 69
Slope Threshold : 0.6
Height Threshold [FU] : 0.5
Area Threshold : 0.2
Width Threshold [s] : 0.5
Baseline Plateau [s] : 6

Filter Settings

Filter Width [s] : 0.5
Polynomial Order : 4

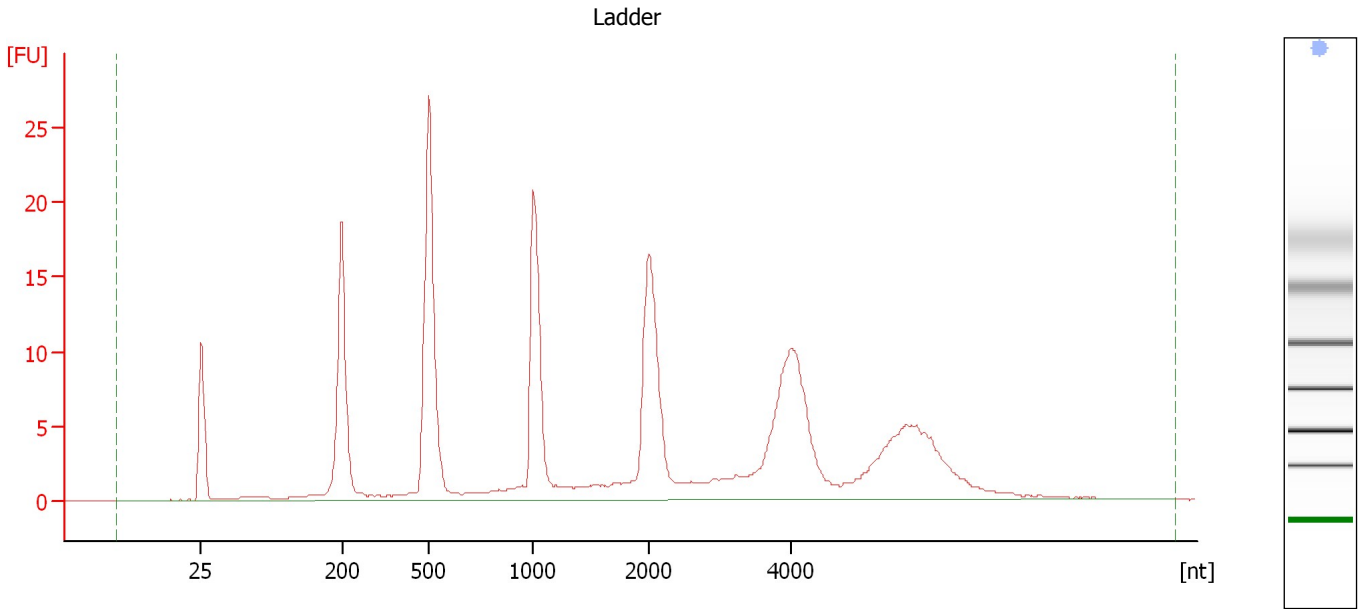
Ladder

Ladder Peak	Size
1	25
2	200
3	500
4	1000
5	2000
6	4000

Assay Class: Eukaryote Total RNA Nano
Data Path: C:\...ents and Settings\Bioanalyzer\2013-10-14\2013-10-14_006.xad

Created: 10/14/2013 4:31:13 PM
Modified: 10/17/2013 2:48:36 PM

Electropherogram Summary



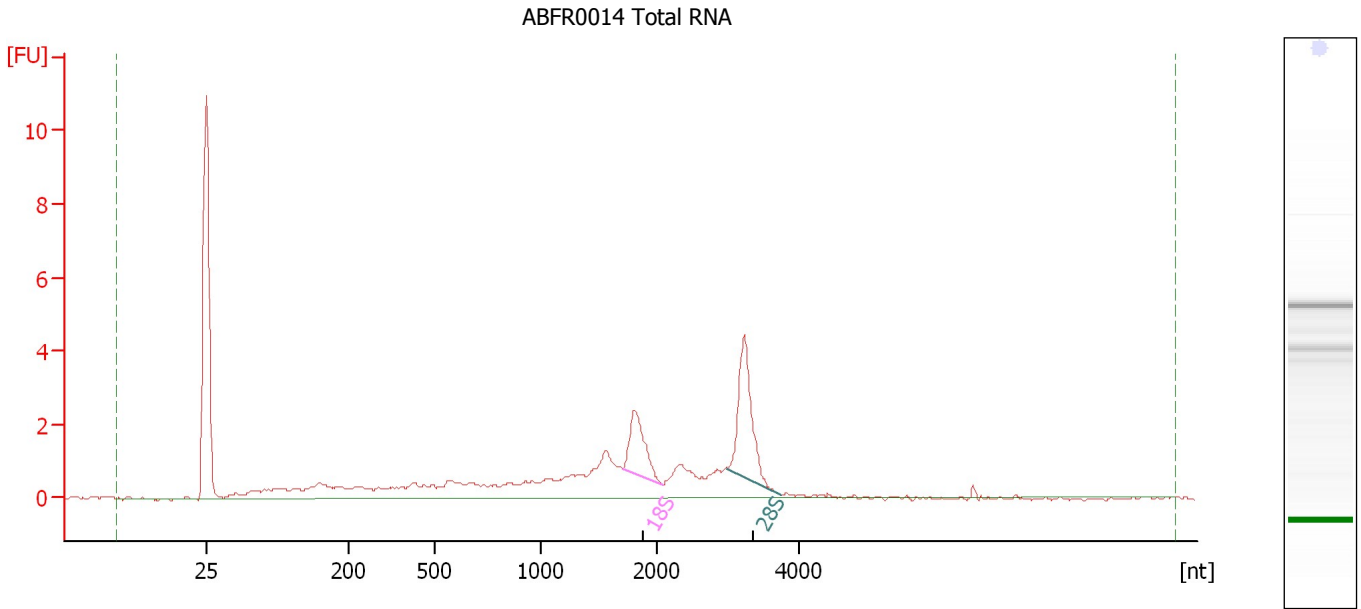
Overall Results for Ladder

RNA Area:	228.3	Result Flagging Color:	
RNA Concentration:	150 ng/ μ l	Result Flagging Label:	All Other Samples

Assay Class: Eukaryote Total RNA Nano
Data Path: C:\...ents and Settings\Bioanalyzer\2013-10-14\2013-10-14_006.xad

Created: 10/14/2013 4:31:13 PM
Modified: 10/17/2013 2:48:36 PM

Electropherogram Summary Continued ...



Overall Results for sample 1 : ABRF0014 Total RNA

RNA Area: 38.0 RNA Integrity Number (RIN): 7 (B.02.08)
RNA Concentration: 25 ng/μl Result Flagging Color:
rRNA Ratio [28s / 18s]: 1.7 Result Flagging Label: RIN:7

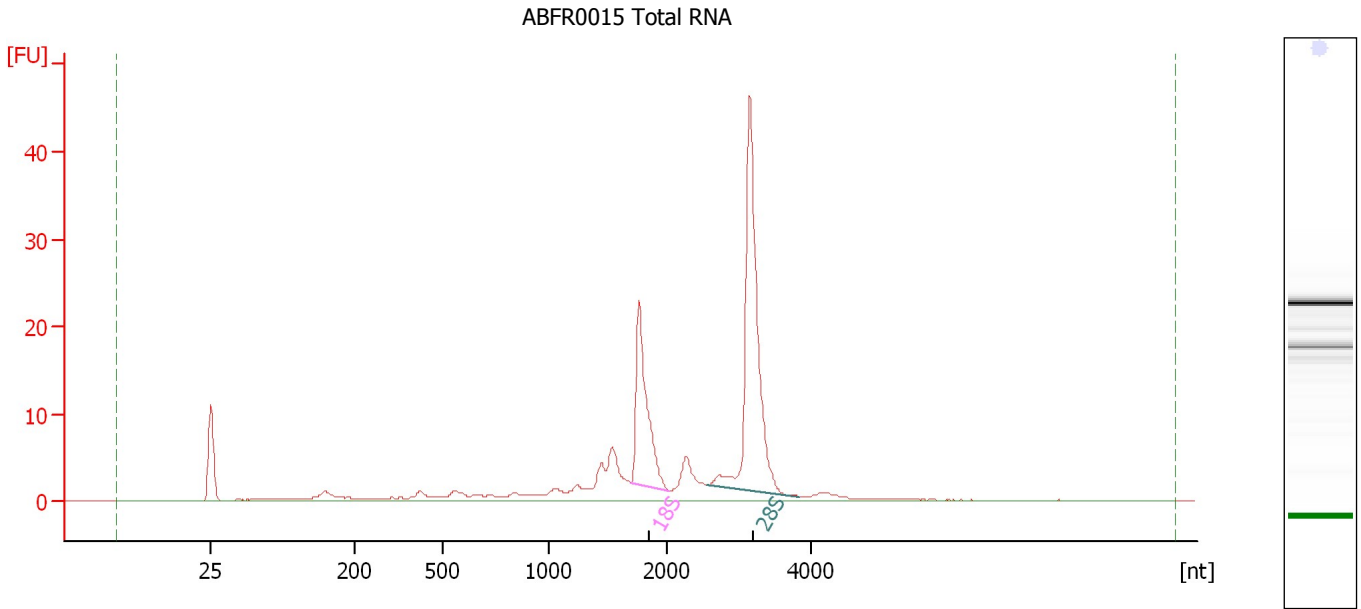
Fragment table for sample 1 : ABRF0014 Total RNA

Name	Start Size [nt]	End Size [nt]	Area	% of total Area
18S	1,700	2,066	3.2	8.3
28S	2,982	3,734	5.5	14.5

Assay Class: Eukaryote Total RNA Nano
Data Path: C:\...ents and Settings\Bioanalyzer\2013-10-14\2013-10-14_006.xad

Created: 10/14/2013 4:31:13 PM
Modified: 10/17/2013 2:48:36 PM

Electropherogram Summary Continued ...



Overall Results for sample 2 : ABFR0015 Total RNA

RNA Area: 160.3 RNA Integrity Number (RIN): 8.5 (B.02.08)
RNA Concentration: 105 ng/μl Result Flagging Color:
rRNA Ratio [28s / 18s]: 2.1 Result Flagging Label: RIN: 8.50

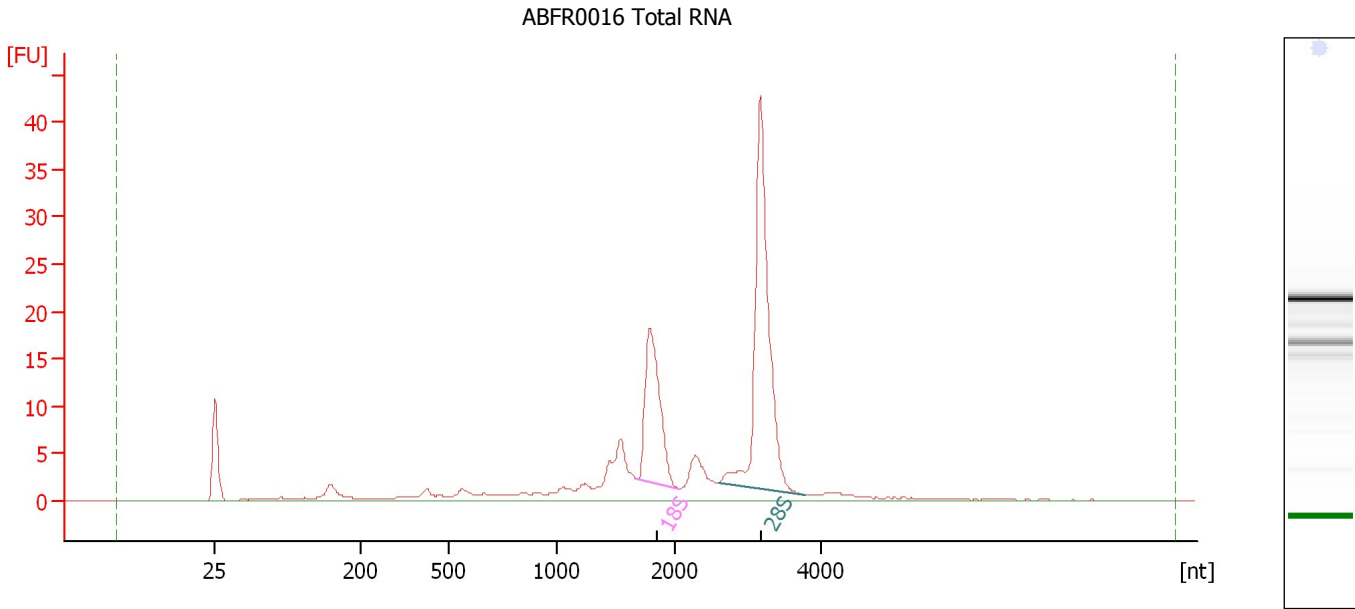
Fragment table for sample 2 : ABFR0015 Total RNA

Name	Start Size [nt]	End Size [nt]	Area	% of total Area
18S	1,690	2,014	27.5	17.2
28S	2,564	3,827	57.9	36.1

Assay Class: Eukaryote Total RNA Nano
Data Path: C:\...ents and Settings\Bioanalyzer\2013-10-14\2013-10-14_006.xad

Created: 10/14/2013 4:31:13 PM
Modified: 10/17/2013 2:48:36 PM

Electropherogram Summary Continued ...



Overall Results for sample 3 : ABFR0016 Total RNA

RNA Area: 170.4 RNA Integrity Number (RIN): 8.4 (B.02.08)
RNA Concentration: 112 ng/μl Result Flagging Color:
rRNA Ratio [28s / 18s]: 2.1 Result Flagging Label: RIN: 8.40

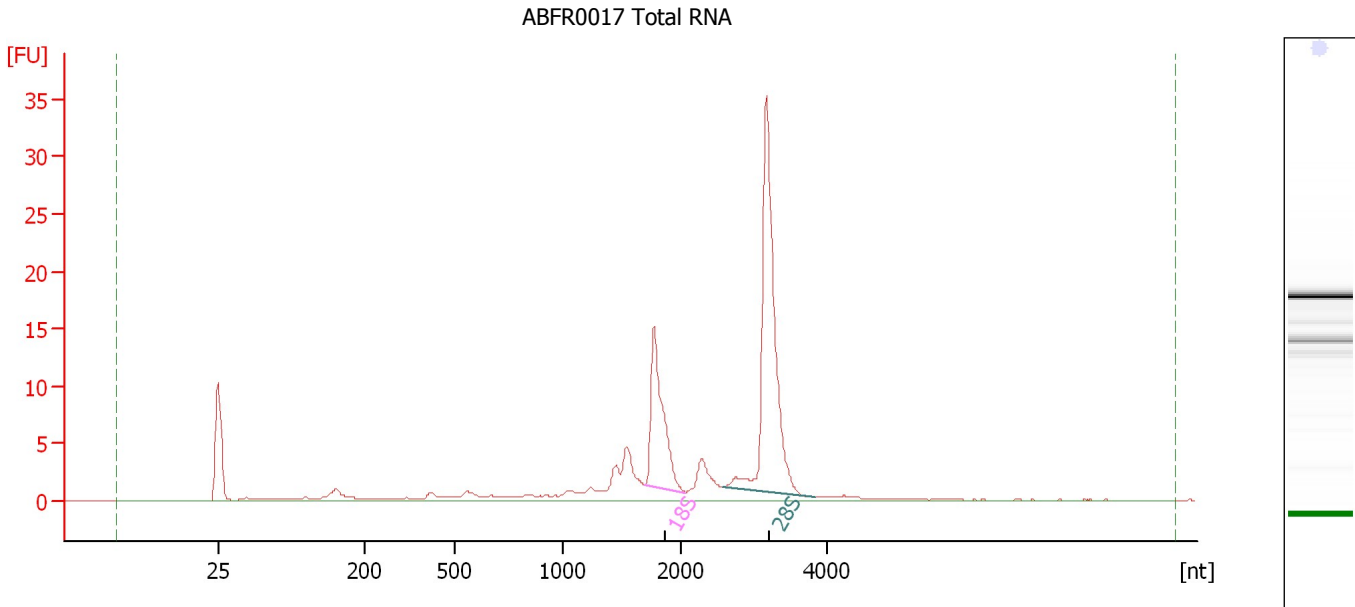
Fragment table for sample 3 : ABFR0016 Total RNA

Name	Start Size [nt]	End Size [nt]	Area	% of total Area
18S	1,679	2,035	28.9	16.9
28S	2,595	3,789	59.9	35.1

Assay Class: Eukaryote Total RNA Nano
 Data Path: C:\...ents and Settings\Bioanalyzer\2013-10-14\2013-10-14_006.xad

Created: 10/14/2013 4:31:13 PM
 Modified: 10/17/2013 2:48:36 PM

Electropherogram Summary Continued ...



Overall Results for sample 4 : ABRF0017 Total RNA

RNA Area:	113.9	RNA Integrity Number (RIN):	8.5 (B.02.08)
RNA Concentration:	75 ng/μl	Result Flagging Color:	
rRNA Ratio [28s / 18s]:	2.3	Result Flagging Label:	RIN: 8.50

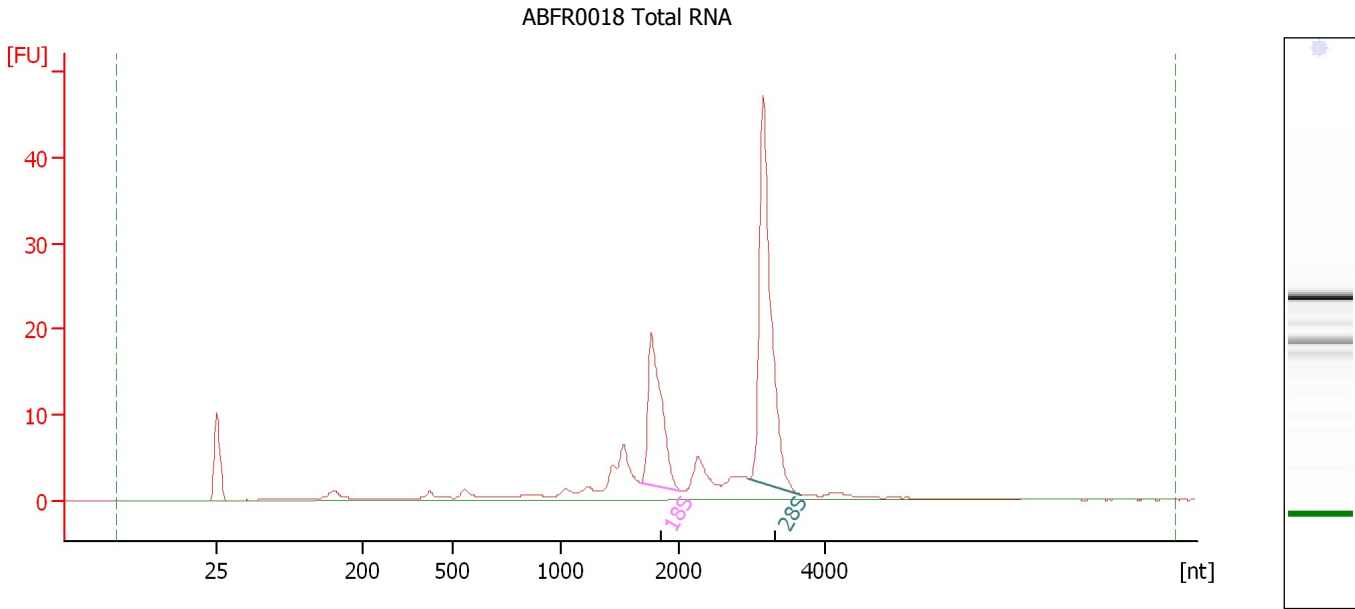
Fragment table for sample 4 : ABRF0017 Total RNA

Name	Start Size [nt]	End Size [nt]	Area	% of total Area
18S	1,692	2,054	19.8	17.4
28S	2,567	3,841	44.8	39.3

Assay Class: Eukaryote Total RNA Nano
Data Path: C:\...ents and Settings\Bioanalyzer\2013-10-14\2013-10-14_006.xad

Created: 10/14/2013 4:31:13 PM
Modified: 10/17/2013 2:48:36 PM

Electropherogram Summary Continued ...



Overall Results for sample 5 : ABFR0018 Total RNA

RNA Area: 159.9 RNA Integrity Number (RIN): 8.5 (B.02.08)
RNA Concentration: 105 ng/μl Result Flagging Color:
rRNA Ratio [28s / 18s]: 2.0 Result Flagging Label: RIN: 8.50

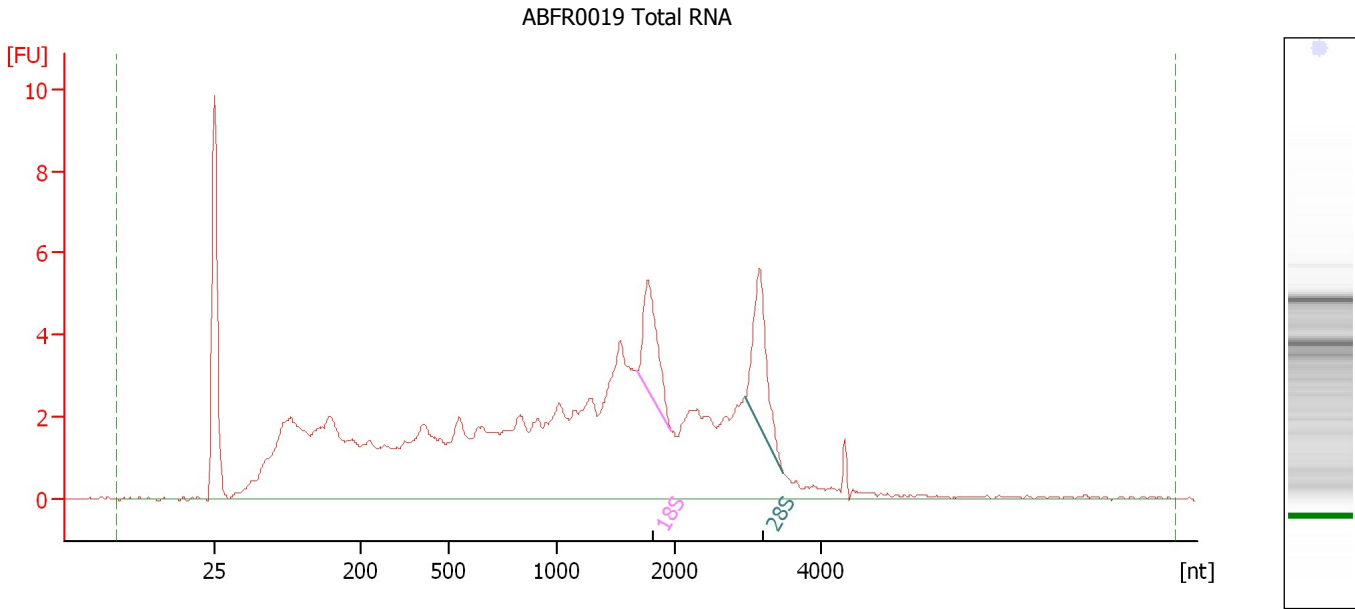
Fragment table for sample 5 : ABFR0018 Total RNA

Name	Start Size [nt]	End Size [nt]	Area	% of total Area
18S	1,682	2,008	29.0	18.1
28S	2,948	3,667	57.1	35.7

Assay Class: Eukaryote Total RNA Nano
Data Path: C:\...ents and Settings\Bioanalyzer\2013-10-14\2013-10-14_006.xad

Created: 10/14/2013 4:31:13 PM
Modified: 10/17/2013 2:48:36 PM

Electropherogram Summary Continued ...



Overall Results for sample 6 : ABFR0019 Total RNA

RNA Area: 134.1 RNA Integrity Number (RIN): 4.5 (B.02.08)
RNA Concentration: 88 ng/μl Result Flagging Color:
rRNA Ratio [28s / 18s]: 1.2 Result Flagging Label: RIN: 4.50

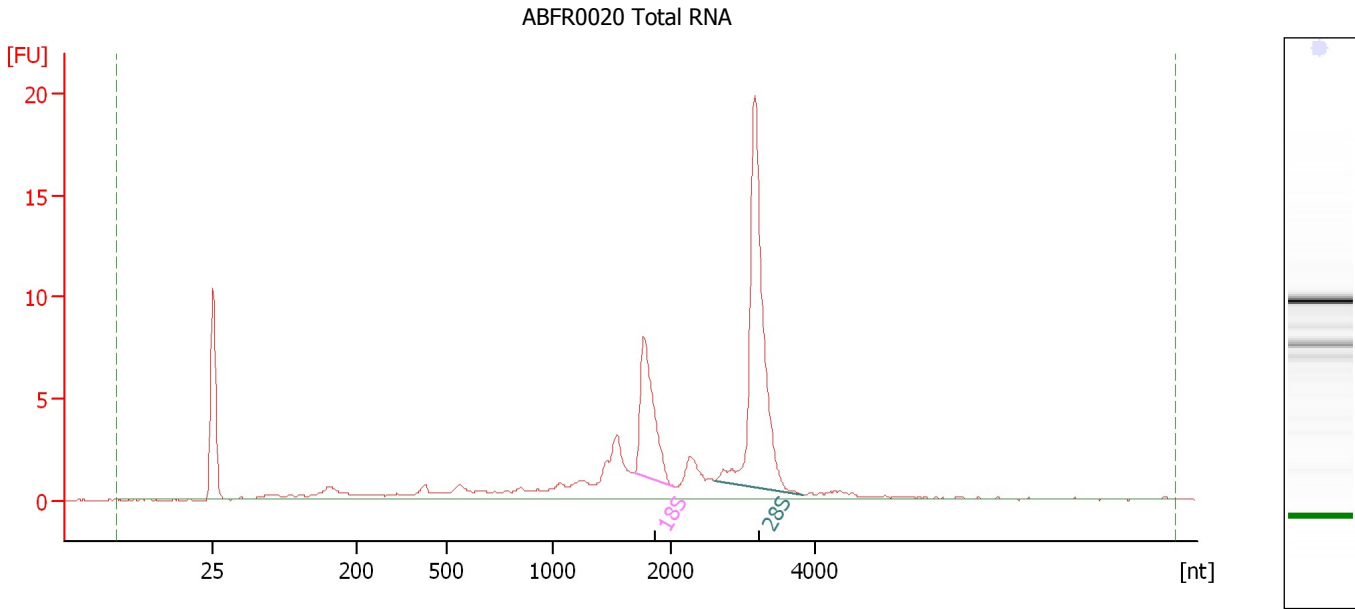
Fragment table for sample 6 : ABFR0019 Total RNA

Name	Start Size [nt]	End Size [nt]	Area	% of total Area
18S	1,679	1,967	4.6	3.4
28S	2,963	3,494	5.5	4.1

Assay Class: Eukaryote Total RNA Nano
Data Path: C:\...ents and Settings\Bioanalyzer\2013-10-14\2013-10-14_006.xad

Created: 10/14/2013 4:31:13 PM
Modified: 10/17/2013 2:48:36 PM

Electropherogram Summary Continued ...



Overall Results for sample 7 : ABFR0020 Total RNA

RNA Area: 78.8 RNA Integrity Number (RIN): 8.3 (B.02.08)
RNA Concentration: 52 ng/μl Result Flagging Color:
rRNA Ratio [28s / 18s]: 2.4 Result Flagging Label: RIN: 8.30

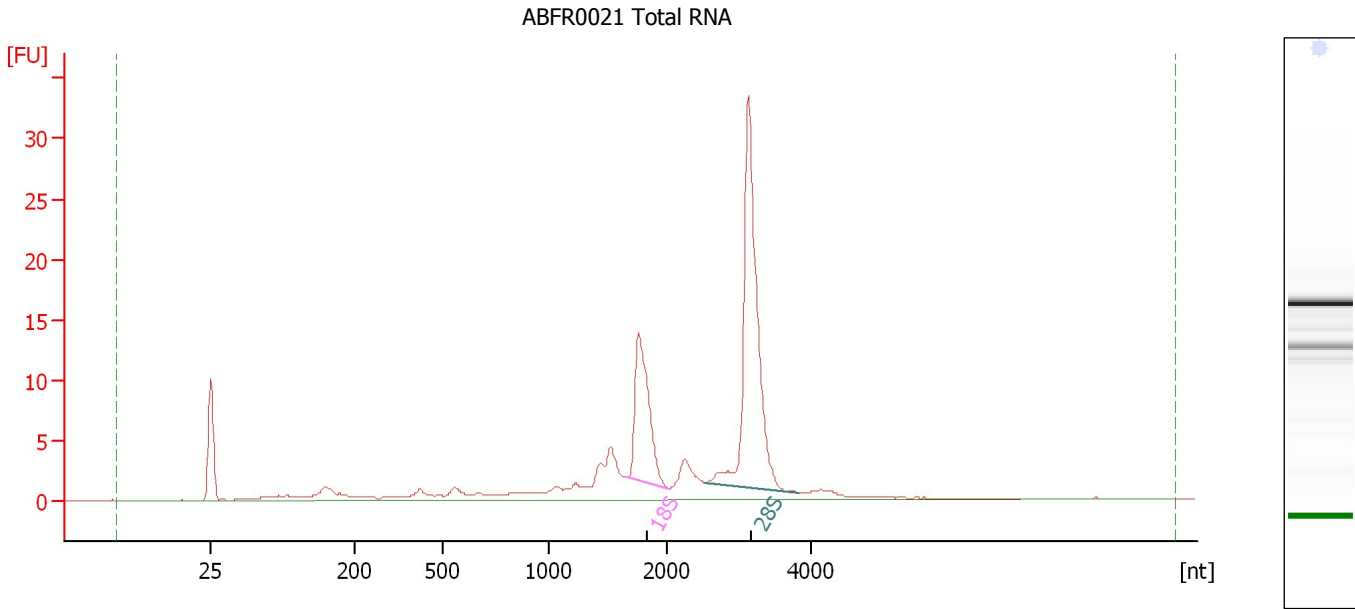
Fragment table for sample 7 : ABFR0020 Total RNA

Name	Start Size [nt]	End Size [nt]	Area	% of total Area
18S	1,684	2,046	10.9	13.9
28S	2,594	3,823	26.7	34.0

Assay Class: Eukaryote Total RNA Nano
 Data Path: C:\...ents and Settings\Bioanalyzer\2013-10-14\2013-10-14_006.xad

Created: 10/14/2013 4:31:13 PM
 Modified: 10/17/2013 2:48:36 PM

Electropherogram Summary Continued ...



Overall Results for sample 8 : ABFR0021 Total RNA

RNA Area:	129.3	RNA Integrity Number (RIN):	8.4 (B.02.08)
RNA Concentration:	85 ng/μl	Result Flagging Color:	
rRNA Ratio [28s / 18s]:	2.3	Result Flagging Label:	RIN: 8.40

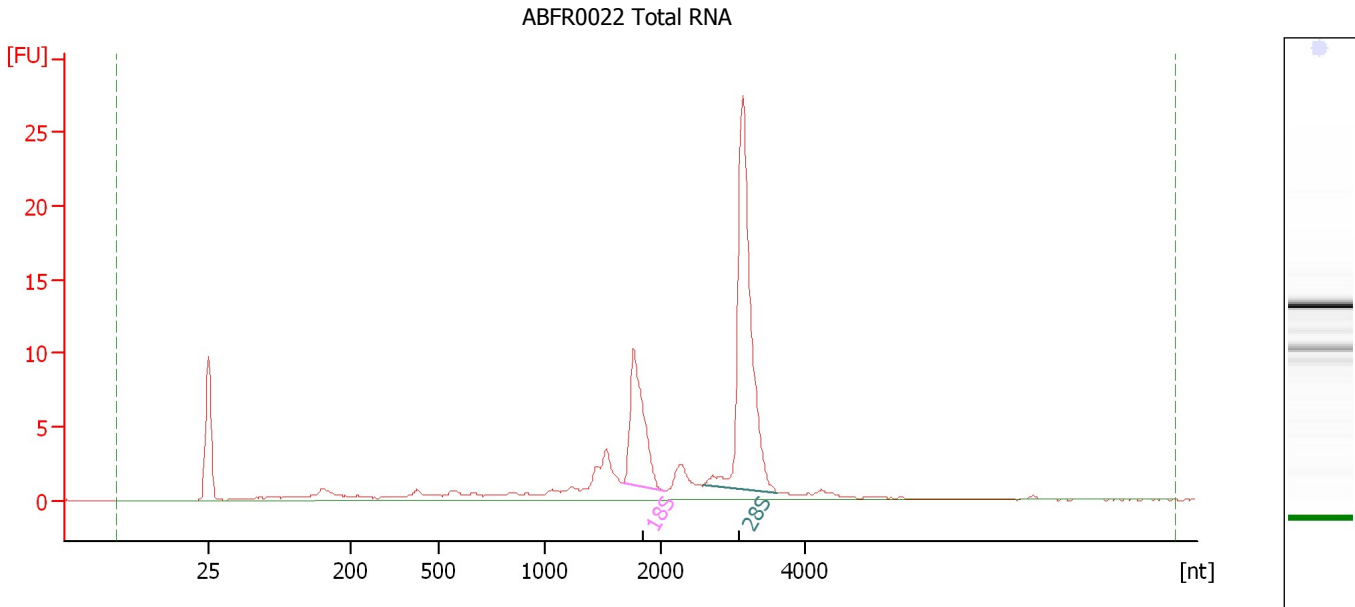
Fragment table for sample 8 : ABFR0021 Total RNA

Name	Start Size [nt]	End Size [nt]	Area	% of total Area
18S	1,654	2,014	20.7	16.0
28S	2,534	3,842	47.1	36.4

Assay Class: Eukaryote Total RNA Nano
 Data Path: C:\...ents and Settings\Bioanalyzer\2013-10-14\2013-10-14_006.xad

Created: 10/14/2013 4:31:13 PM
 Modified: 10/17/2013 2:48:36 PM

Electropherogram Summary Continued ...



Overall Results for sample 9 : ABRF0022 Total RNA

RNA Area:	97.5	RNA Integrity Number (RIN):	8.4 (B.02.08, Anomaly Threshold(s) manually adapted)
RNA Concentration:	64 ng/μl		
rRNA Ratio [28s / 18s]:	2.4	Result Flagging Color:	
		Result Flagging Label:	RIN: 8.40

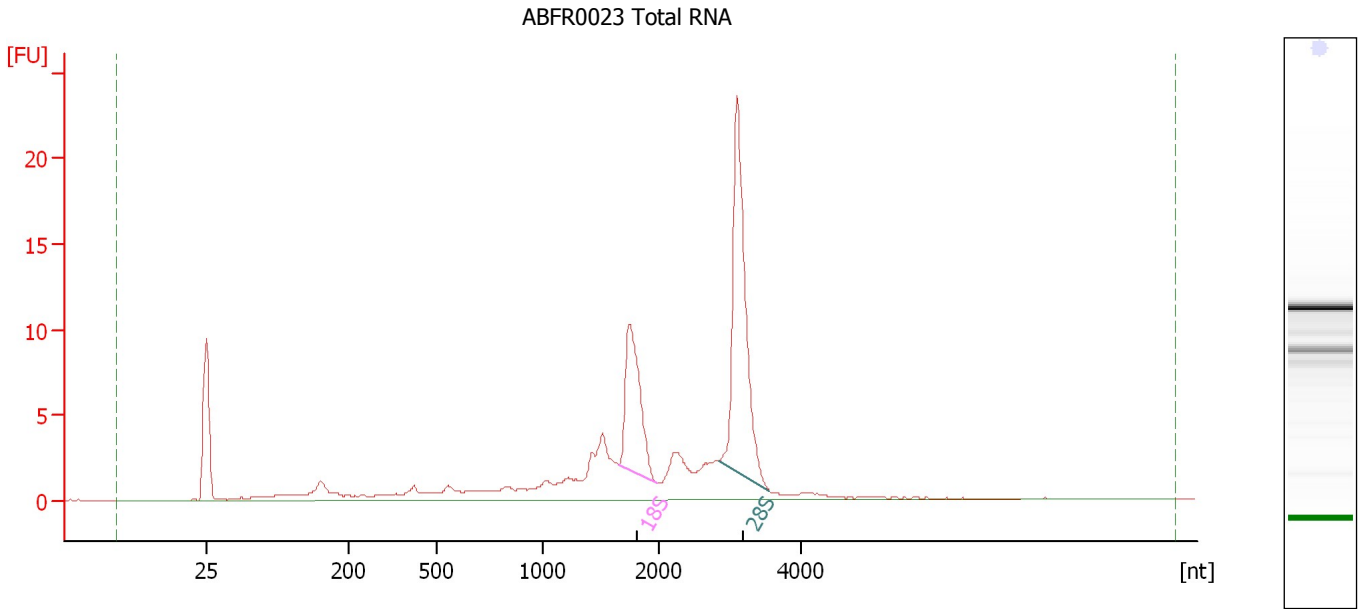
Fragment table for sample 9 : ABRF0022 Total RNA

Name	Start Size [nt]	End Size [nt]	Area	% of total Area
18S	1,667	2,039	15.4	15.8
28S	2,593	3,610	37.3	38.2

Assay Class: Eukaryote Total RNA Nano
Data Path: C:\...ents and Settings\Bioanalyzer\2013-10-14\2013-10-14_006.xad

Created: 10/14/2013 4:31:13 PM
Modified: 10/17/2013 2:48:36 PM

Electropherogram Summary Continued ...



Overall Results for sample 10 : ABFR0023 Total RNA

RNA Area:	108.1	RNA Integrity Number (RIN):	8.3 (B.02.08)
RNA Concentration:	71 ng/μl	Result Flagging Color:	
rRNA Ratio [28s / 18s]:	2.0	Result Flagging Label:	RIN: 8.30

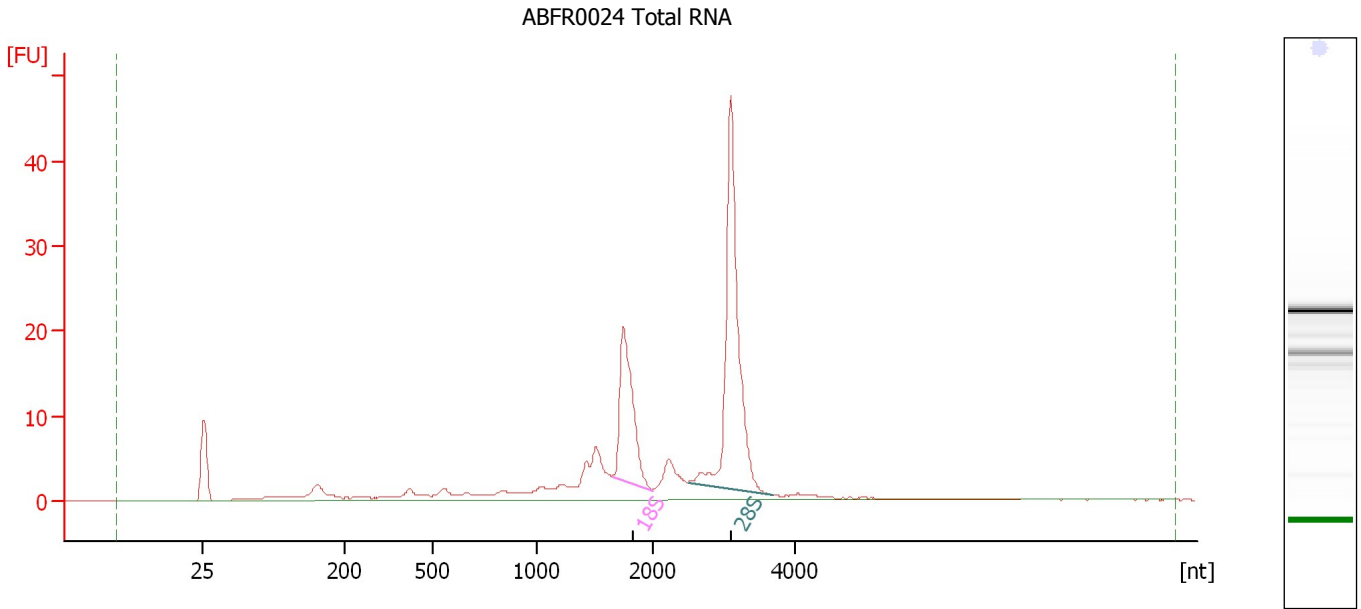
Fragment table for sample 10 : ABFR0023 Total RNA

Name	Start Size [nt]	End Size [nt]	Area	% of total Area
18S	1,656	1,986	15.0	13.9
28S	2,847	3,552	29.9	27.6

Assay Class: Eukaryote Total RNA Nano
Data Path: C:\...ents and Settings\Bioanalyzer\2013-10-14\2013-10-14_006.xad

Created: 10/14/2013 4:31:13 PM
Modified: 10/17/2013 2:48:36 PM

Electropherogram Summary Continued ...



Overall Results for sample 11 : ABR0024 Total RNA

RNA Area: 177.8 RNA Integrity Number (RIN): 8.3 (B.02.08)
RNA Concentration: 117 ng/μl Result Flagging Color:
rRNA Ratio [28s / 18s]: 2.2 Result Flagging Label: RIN: 8.30

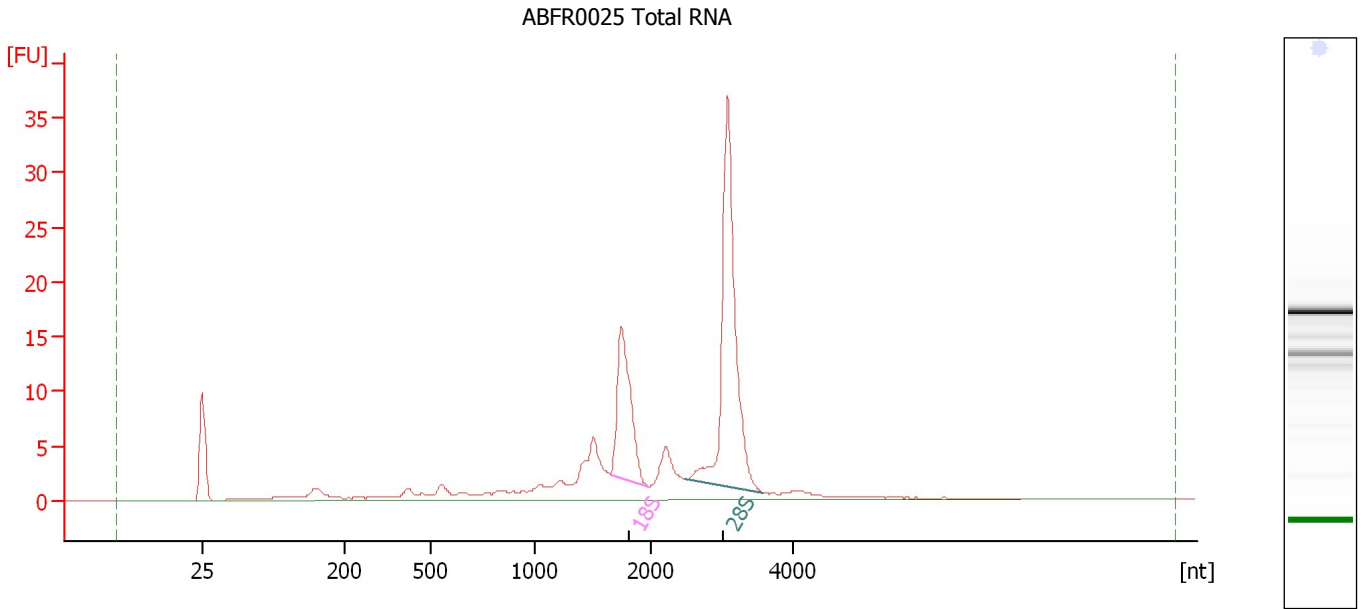
Fragment table for sample 11 : ABR0024 Total RNA

Name	Start Size [nt]	End Size [nt]	Area	% of total Area
18S	1,651	1,992	28.7	16.2
28S	2,501	3,677	62.2	35.0

Assay Class: Eukaryote Total RNA Nano
Data Path: C:\...ents and Settings\Bioanalyzer\2013-10-14\2013-10-14_006.xad

Created: 10/14/2013 4:31:13 PM
Modified: 10/17/2013 2:48:36 PM

Electropherogram Summary Continued ...



Overall Results for sample 12 : ABFR0025 Total RNA

RNA Area:	149.3	RNA Integrity Number (RIN):	8.3 (B.02.08)
RNA Concentration:	98 ng/μl	Result Flagging Color:	
rRNA Ratio [28s / 18s]:	2.2	Result Flagging Label:	RIN: 8.30

Fragment table for sample 12 : ABFR0025 Total RNA

Name	Start Size [nt]	End Size [nt]	Area	% of total Area
18S	1,649	1,973	22.8	15.3
28S	2,485	3,589	50.9	34.1

Assay Class: Eukaryote Total RNA Nano
Data Path: C:\...ents and Settings\Bioanalyzer\2013-10-14\2013-10-14_006.xad

Created: 10/14/2013 4:31:13 PM
Modified: 10/17/2013 2:48:36 PM

Gel Image

