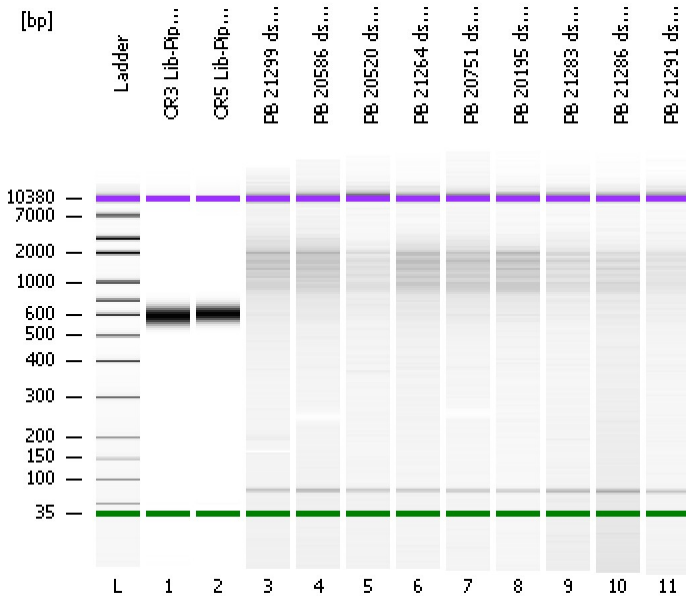


Assay Class: High Sensitivity DNA Assay
Data Path: C:\...ents and Settings\Bioanalyzer\2013-10-15\2013-10-15_001.xad

Created: 10/15/2013 4:57:58 PM
Modified: 10/15/2013 5:41:34 PM

Electrophoresis File Run Summary



Instrument Information:

Instrument Name: DE13701086 Firmware: C.01.069
Serial#: DE13701086 Type: G2938B

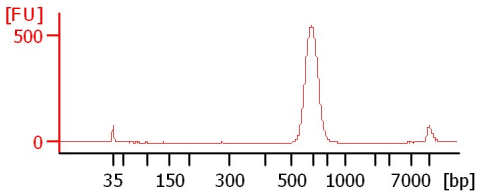
Assay Information:

Assay Origin Path: C:\Program Files\Agilent\2100 bioanalyzer\2100 expert\assays\dsDNA\High Sensitivity DNA.xsy
Assay Class: High Sensitivity DNA Assay
Version: 1.03
Assay Comments: Copyright © 2003-2010 Agilent Technologies

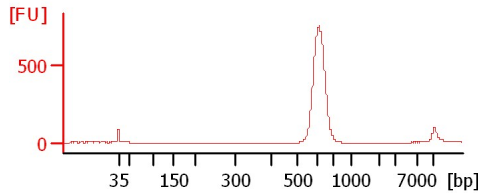
Chip Information:

Chip Lot #:
Reagent Kit Lot #:
Chip Comments:

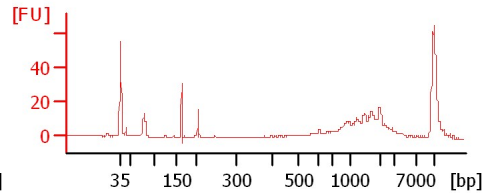
OR3 Lib-Pipp 1:2



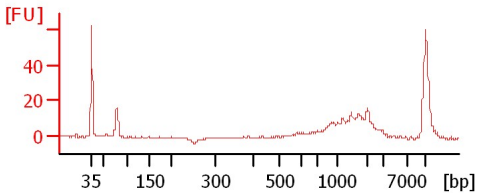
OR5 Lib-Pipp 1:2



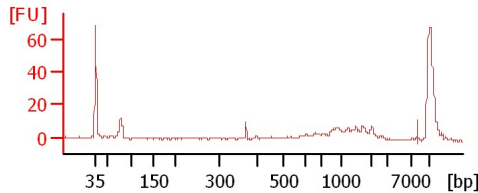
PB 21299 ds cDNA



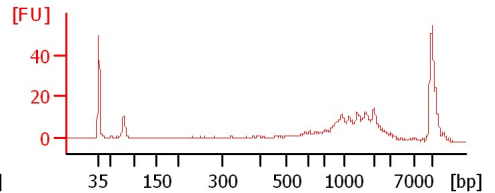
PB 20586 ds cDNA



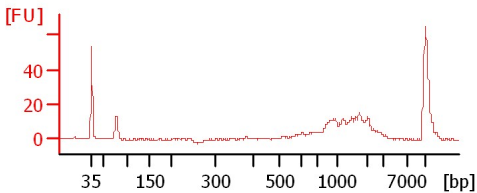
PB 20520 ds cDNA



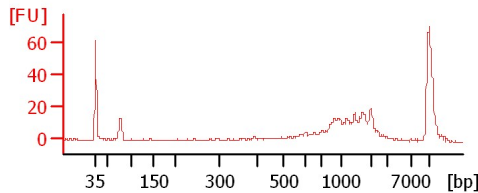
PB 21264 ds cDNA



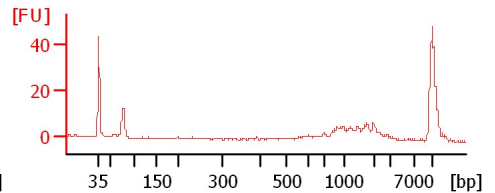
PB 20751 ds cDNA



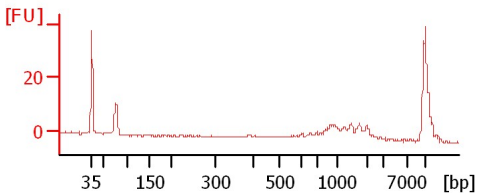
PB 20195 ds cDNA



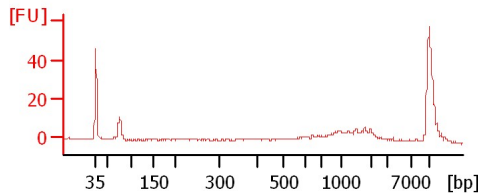
PB 21283 ds cDNA



PB 21286 ds cDNA



PB 21291 ds cDNA



Assay Class: High Sensitivity DNA Assay
Data Path: C:\...ents and Settings\Bioanalyzer\2013-10-15\2013-10-15_001.xad

Created: 10/15/2013 4:57:58 PM
Modified: 10/15/2013 5:41:34 PM

Electrophoresis File Run Summary (Chip Summary)

Sample Name	Sample Comment	Rest. Digest	Status	Observation	Result Label	Result Color
OR3 Lib-Pipp 1:2		<input type="checkbox"/>	✓			
OR5 Lib-Pipp 1:2		<input type="checkbox"/>	✓			
PB 21299 ds cDNA		<input type="checkbox"/>	✓			
PB 20586 ds cDNA		<input type="checkbox"/>	✓			
PB 20520 ds cDNA		<input type="checkbox"/>	✓			
PB 21264 ds cDNA		<input type="checkbox"/>	✓			
PB 20751 ds cDNA		<input type="checkbox"/>	✓			
PB 20195 ds cDNA		<input type="checkbox"/>	✓			
PB 21283 ds cDNA		<input type="checkbox"/>	✓			
PB 21286 ds cDNA		<input type="checkbox"/>	✓			
PB 21291 ds cDNA		<input type="checkbox"/>	✓			
Ladder		<input type="checkbox"/>	✓			

Chip Lot #

Reagent Kit Lot #

Chip Comments :

Assay Class: High Sensitivity DNA Assay
Data Path: C:\...ents and Settings\Bioanalyzer\2013-10-15\2013-10-15_001.xad

Created: 10/15/2013 4:57:58 PM
Modified: 10/15/2013 5:41:34 PM

Electrophoresis Assay Details

General Analysis Settings

Number of Available Sample and Ladder Wells (Max.) : 12
Minimum Visible Range [s] : 32
Maximum Visible Range [s] : 138
Start Analysis Time Range [s] : 33
End Analysis Time Range [s] : 137.5
Ladder Concentration [pg/ μ l] : 1950
Uses Standard Area for Ladder Fragments
Lower Marker Concentration [pg/ μ l] : 125
Upper Marker Concentration [pg/ μ l] : 75
Used Upper Marker for Quantitation
Standard Curve Fit is Point to Point
Show Data Aligned to Lower and Upper Marker

Integrator Settings

Integration Start Time [s] : 33.05
Integration End Time [s] : 137
Slope Threshold : 0.8
Height Threshold [FU] : 5
Area Threshold : 0.1
Width Threshold [s] : 0.6
Baseline Plateau [s] : 0.5

Filter Settings

Filter Width [s] : 0.5
Polynomial Order : 4

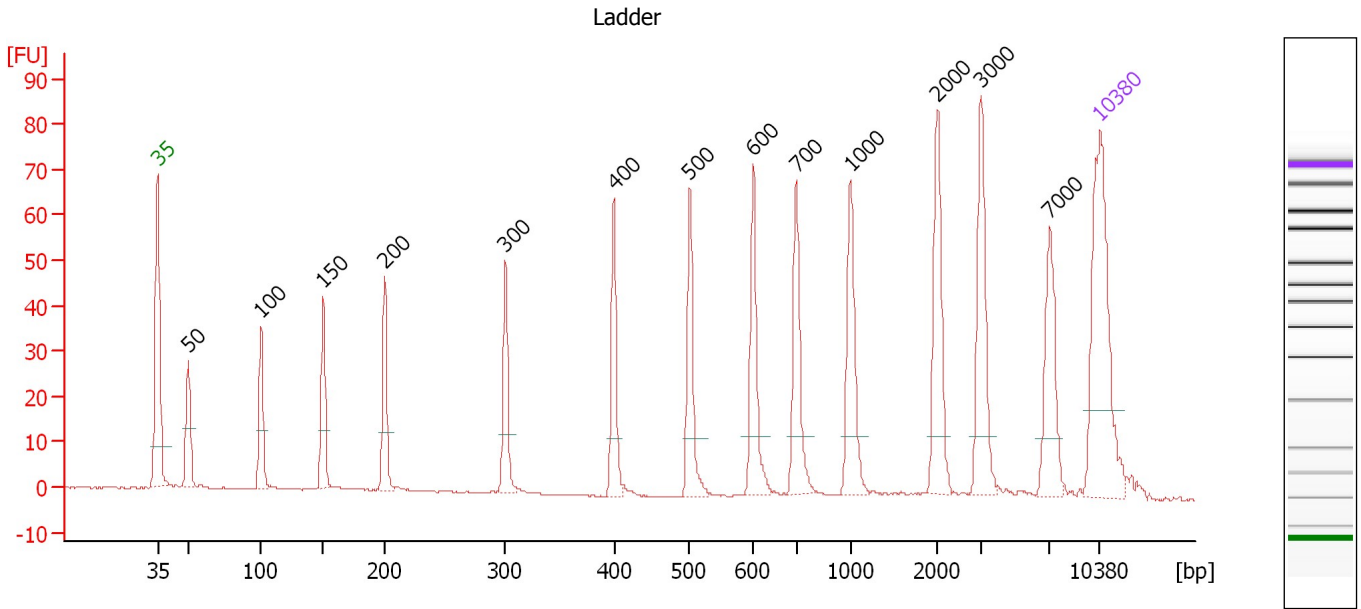
Ladder

Ladder Peak	Size	Area
1	35	160
2	50	210
3	100	208
4	150	221
5	200	242
6	300	270
7	400	305
8	500	306
9	600	336
10	700	321
11	1000	366
12	2000	413
13	3000	411
14	7000	400
15	10380	214

Assay Class: High Sensitivity DNA Assay
 Data Path: C:\...ents and Settings\Bioanalyzer\2013-10-15\2013-10-15_001.xad

Created: 10/15/2013 4:57:58 PM
 Modified: 10/15/2013 5:41:34 PM

Electropherogram Summary



Overall Results for Ladder

Noise: 0.2

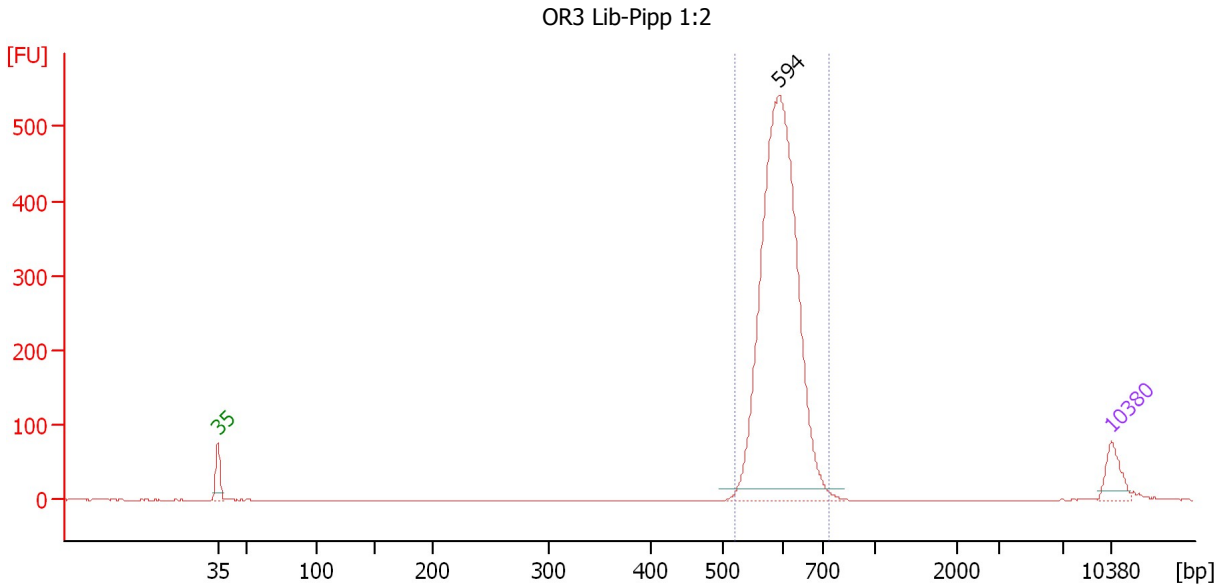
Peak table for Ladder

Peak	Size [bp]	Conc. [pg/μl]	Molarity [pmol/l]	Observations
1	35	125.00	5,411.3	Lower Marker
2	50	150.00	4,545.5	Ladder Peak
3	100	150.00	2,272.7	Ladder Peak
4	150	150.00	1,515.2	Ladder Peak
5	200	150.00	1,136.4	Ladder Peak
6	300	150.00	757.6	Ladder Peak
7	400	150.00	568.2	Ladder Peak
8	500	150.00	454.5	Ladder Peak
9	600	150.00	378.8	Ladder Peak
10	700	150.00	324.7	Ladder Peak
11	1,000	150.00	227.3	Ladder Peak
12	2,000	150.00	113.6	Ladder Peak
13	3,000	150.00	75.8	Ladder Peak
14	7,000	150.00	32.5	Ladder Peak
15	10,380	75.00	10.9	Upper Marker

Assay Class: High Sensitivity DNA Assay
 Data Path: C:\...ents and Settings\Bioanalyzer\2013-10-15\2013-10-15_001.xad

Created: 10/15/2013 4:57:58 PM
 Modified: 10/15/2013 5:41:34 PM

Electropherogram Summary Continued ...



Setpoint Deviations for sample 1 : OR3 Lib-Pipp 1:2

Height Threshold [FU] : 15

Overall Results for sample 1 : OR3 Lib-Pipp 1:2

Number of peaks found: 1 Corr. Area 1: 2,180.0
 Noise: 0.2

Peak table for sample 1 : OR3 Lib-Pipp 1:2

Peak	Size [bp]	Conc. [pg/µl]	Molarity [pmol/l]	Observations
1	35	125.00	5,411.3	Lower Marker
2	594	2,201.34	5,616.6	
3	10,380	75.00	10.9	Upper Marker

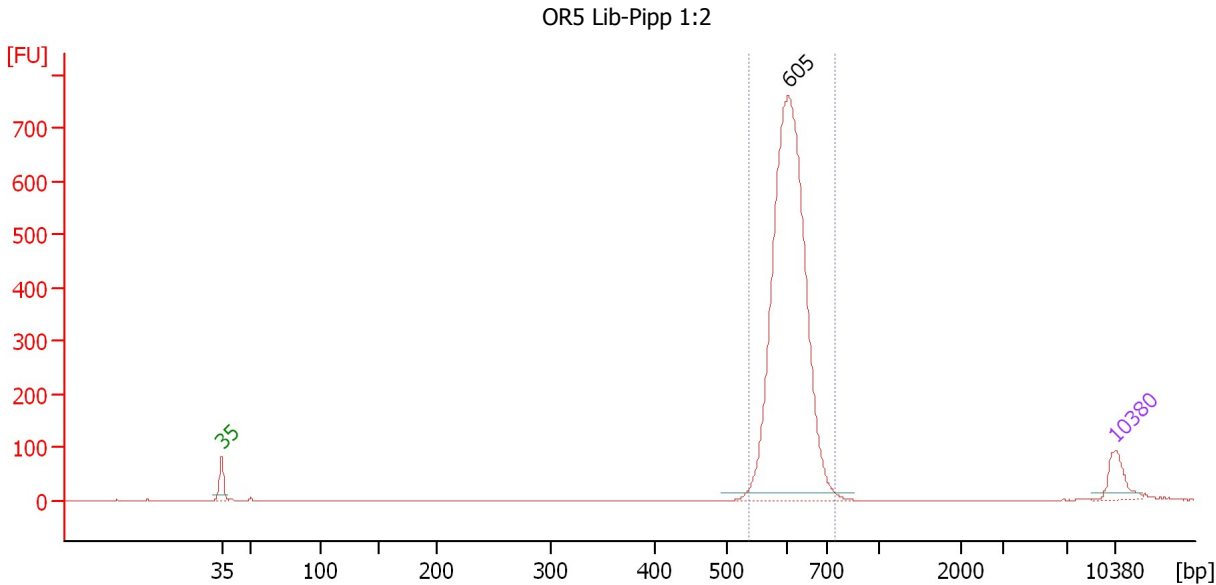
Region table for sample 1 : OR3 Lib-Pipp 1:2

From [bp]	To [bp]	Average Size [bp]	Molarity [pmol/l]	Conc. [pg/µl]	Corr. Area	% of Total	Size distribution in CV [%]	Color
519	733	599	5,587.9	2,203.47	2,180.0	99	5.5	Blue

Assay Class: High Sensitivity DNA Assay
 Data Path: C:\...ents and Settings\Bioanalyzer\2013-10-15\2013-10-15_001.xad

Created: 10/15/2013 4:57:58 PM
 Modified: 10/15/2013 5:41:34 PM

Electropherogram Summary Continued ...



Setpoint Deviations for sample 2 : OR5 Lib-Pipp 1:2

Height Threshold [FU] : 15

Overall Results for sample 2 : OR5 Lib-Pipp 1:2

Number of peaks found: 1 Corr. Area 1: 2,745.7
 Noise: 0.1

Peak table for sample 2 : OR5 Lib-Pipp 1:2

Peak	Size [bp]	Conc. [pg/µl]	Molarity [pmol/l]	Observations
1	35	125.00	5,411.3	Lower Marker
2	605	2,140.26	5,361.7	
3	10,380	75.00	10.9	Upper Marker

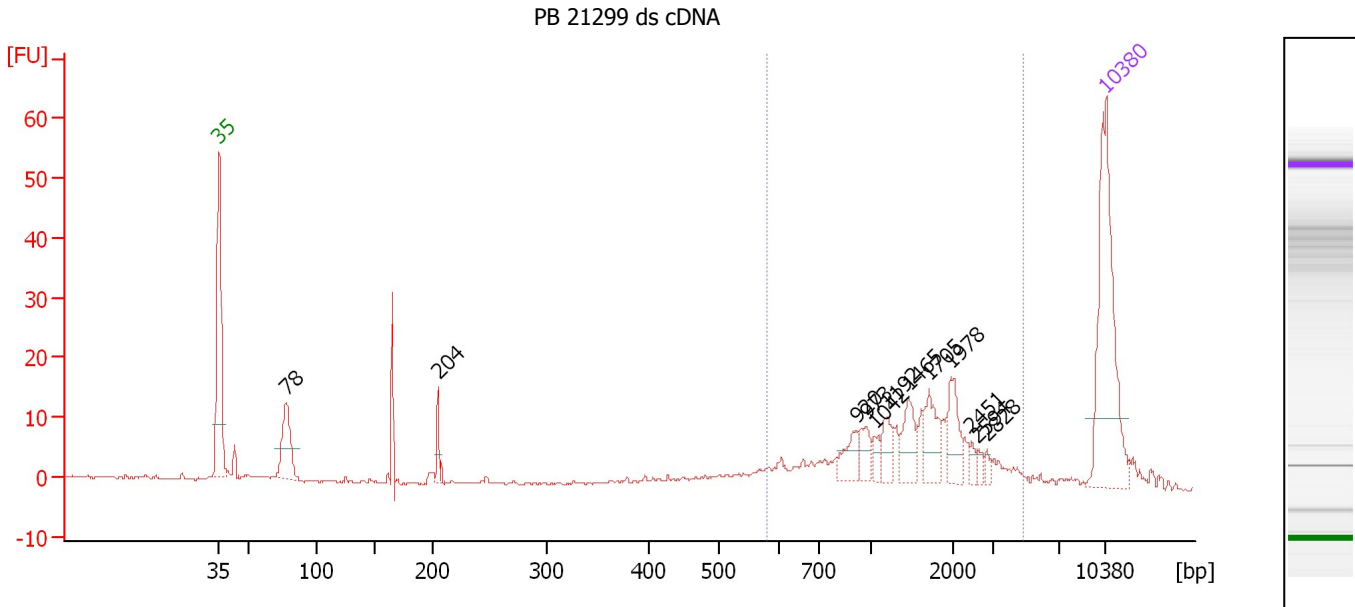
Region table for sample 2 : OR5 Lib-Pipp 1:2

From [bp]	To [bp]	Average Size [bp]	Molarity [pmol/l]	Conc. [pg/µl]	Corr. Area	% of Total	Size distribution in CV [%]	Color
538	749	612	5,302.8	2,135.67	2,745.7	99	5.3	Blue

Assay Class: High Sensitivity DNA Assay
 Data Path: C:\...ents and Settings\Bioanalyzer\2013-10-15\2013-10-15_001.xad

Created: 10/15/2013 4:57:58 PM
 Modified: 10/15/2013 5:41:34 PM

Electropherogram Summary Continued ...



Overall Results for sample 3 : PB 21299 ds cDNA

Number of peaks found: 12 Corr. Area 1: 158.3
 Noise: 0.2

Peak table for sample 3 : PB 21299 ds cDNA

Peak	Size [bp]	Conc. [pg/μl]	Molarity [pmol/l]	Observations
1	35	125.00	5,411.3	Lower Marker
2	78	43.09	837.5	
3	204	10.36	76.8	
4	920	13.25	21.8	
5	973	10.59	16.5	
6	1,042	5.96	8.7	
7	1,192	11.55	14.7	
8	1,465	16.89	17.5	
9	1,705	17.53	15.6	
10	1,978	18.35	14.1	
11	2,451	3.49	2.2	
12	2,594	3.01	1.8	
13	2,828	2.68	1.4	
14	10,380	75.00	10.9	Upper Marker

Region table for sample 3 : PB 21299 ds cDNA

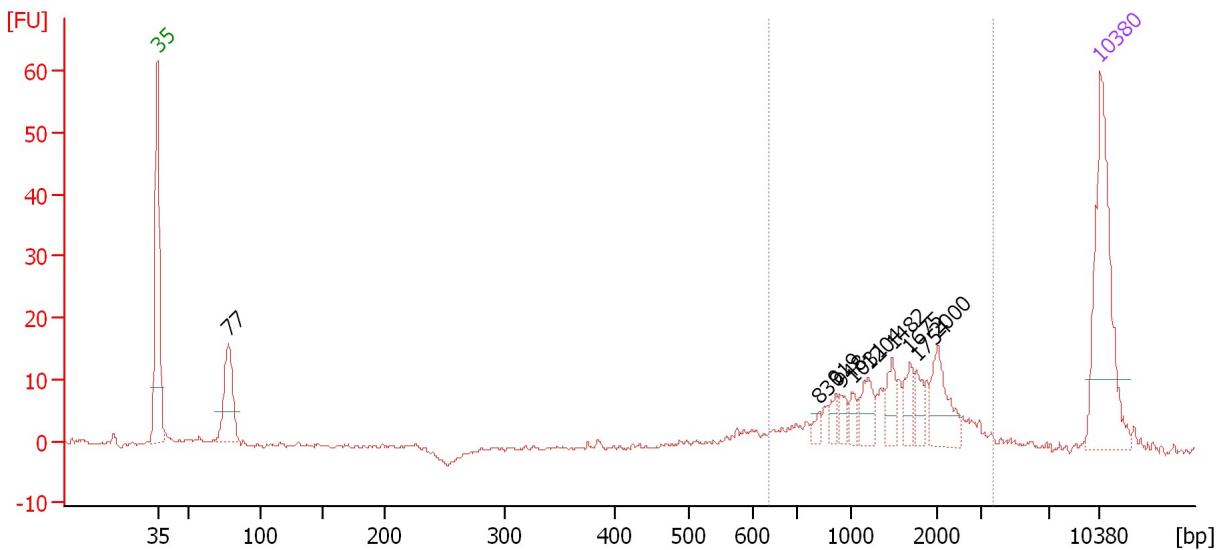
From [bp]	To [bp]	Average Size [bp]	Molarity [pmol/l]	Conc. [pg/μl]	Corr. Area	% of Total	Size distribution in CV [%]	Color
580	4,804	1,603	207.7	170.08	158.3	67	48.9	Blue

Assay Class: High Sensitivity DNA Assay
 Data Path: C:\...ents and Settings\Bioanalyzer\2013-10-15\2013-10-15_001.xad

Created: 10/15/2013 4:57:58 PM
 Modified: 10/15/2013 5:41:34 PM

Electropherogram Summary Continued ...

PB 20586 ds cDNA



Overall Results for sample 4 : PB 20586 ds cDNA

Number of peaks found: 10 Corr. Area 1: 133.5
 Noise: 0.3

Peak table for sample 4 : PB 20586 ds cDNA

Peak	Size [bp]	Conc. [pg/μl]	Molarity [pmol/l]	Observations
1	35	125.00	5,411.3	Lower Marker
2	77	56.16	1,099.8	
3	830	4.63	8.5	
4	919	6.80	11.2	
5	948	6.21	9.9	
6	1,031	6.47	9.5	
7	1,204	14.06	17.7	
8	1,482	12.45	12.7	
9	1,675	11.55	10.5	
10	1,754	9.20	7.9	
11	2,000	23.82	18.1	
12	10,380	75.00	10.9	Upper Marker

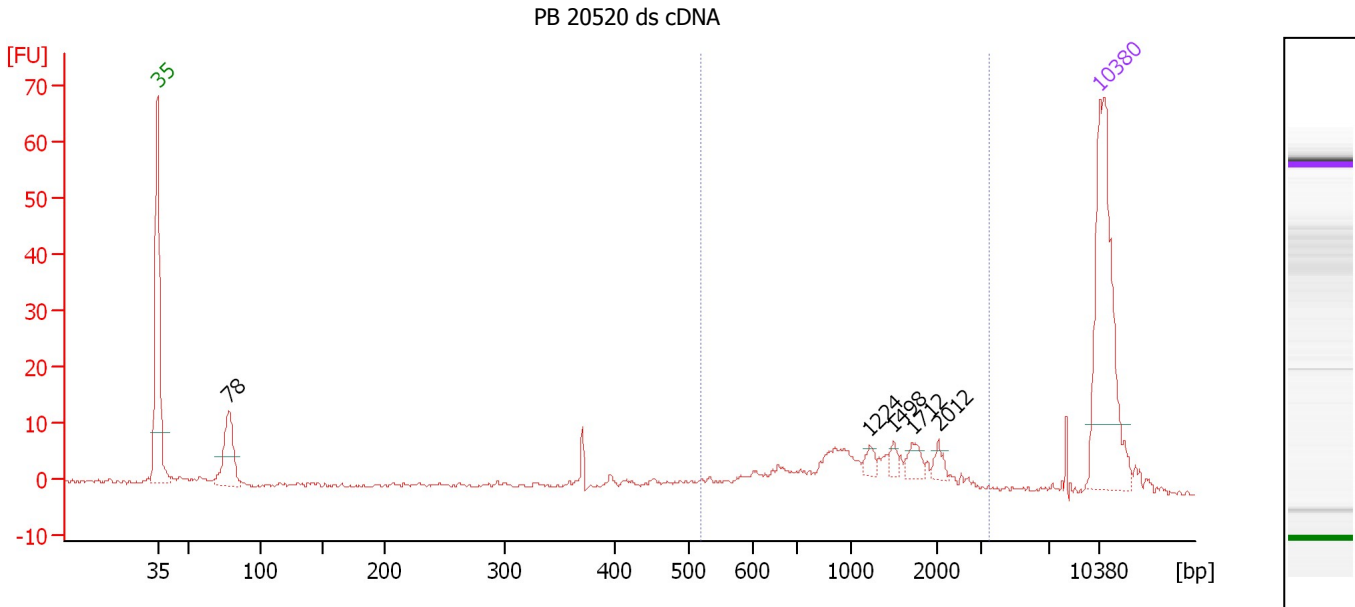
Region table for sample 4 : PB 20586 ds cDNA

From [bp]	To [bp]	Average Size [bp]	Molarity [pmol/l]	Conc. [pg/μl]	Corr. Area	% of Total	Size distribution in CV [%]	Color
636	2300	1,544	178.1	152.51	133.5	71	38.9	Blue

Assay Class: High Sensitivity DNA Assay
 Data Path: C:\...ents and Settings\Bioanalyzer\2013-10-15\2013-10-15_001.xad

Created: 10/15/2013 4:57:58 PM
 Modified: 10/15/2013 5:41:34 PM

Electropherogram Summary Continued ...



Overall Results for sample 5 : PB 20520 ds cDNA

Number of peaks found: 5 Corr. Area 1: 101.3
 Noise: 0.3

Peak table for sample 5 : PB 20520 ds cDNA

Peak	Size [bp]	Conc. [pg/μl]	Molarity [pmol/l]	Observations
1	35	125.00	5,411.3	Lower Marker
2	78	40.22	784.0	
3	1,224	4.12	5.1	
4	1,498	3.62	3.7	
5	1,712	6.38	5.7	
6	2,012	4.32	3.3	
7	10,380	75.00	10.9	Upper Marker

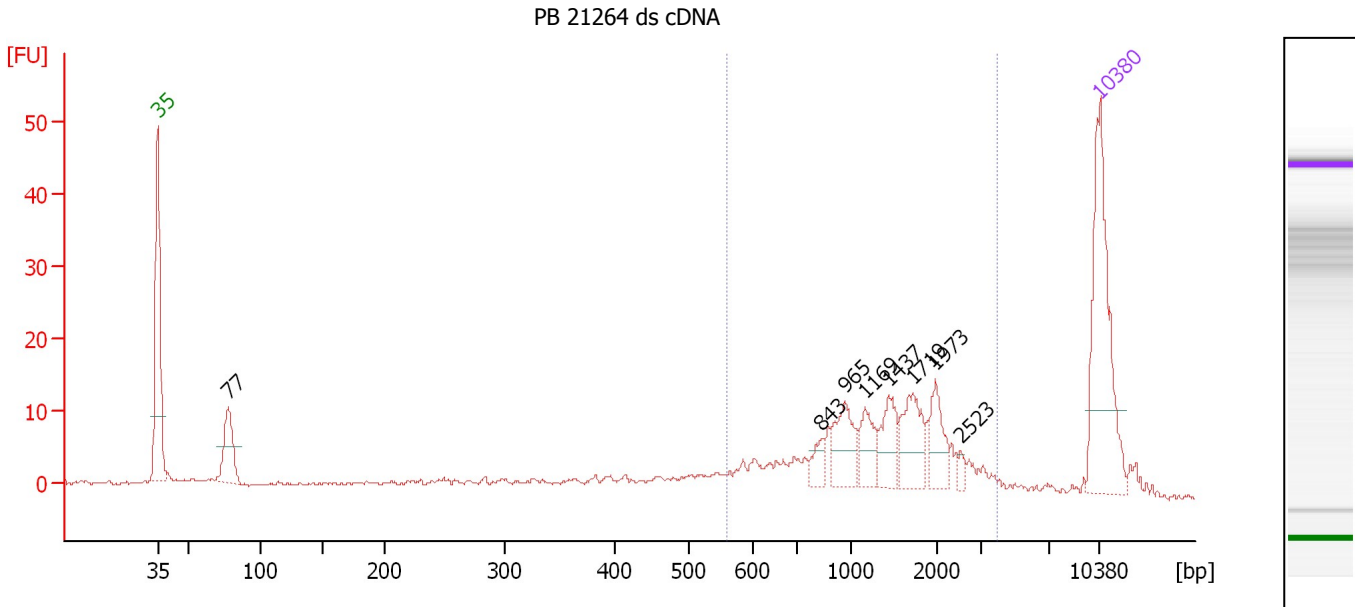
Region table for sample 5 : PB 20520 ds cDNA

From [bp]	To [bp]	Average Size [bp]	Molarity [pmol/l]	Conc. [pg/μl]	Corr. Area	% of Total	Size distribution in CV [%]	Color
517	3,466	1,290	142.2	94.72	101.3	60	45.6	Blue

Assay Class: High Sensitivity DNA Assay
 Data Path: C:\...ents and Settings\Bioanalyzer\2013-10-15\2013-10-15_001.xad

Created: 10/15/2013 4:57:58 PM
 Modified: 10/15/2013 5:41:34 PM

Electropherogram Summary Continued ...



Overall Results for sample 6 : PB 21264 ds cDNA

Number of peaks found: 8 Corr. Area 1: 156.9
 Noise: 0.2

Peak table for sample 6 : PB 21264 ds cDNA

Peak	Size [bp]	Conc. [pg/μl]	Molarity [pmol/l]	Observations
1	35	125.00	5,411.3	Lower Marker
2	77	40.34	788.9	
3	843	9.59	17.2	
4	965	27.45	43.1	
5	1,169	18.48	24.0	
6	1,437	20.52	21.6	
7	1,719	27.19	24.0	
8	1,973	19.75	15.2	
9	2,523	3.13	1.9	
10	10,380	75.00	10.9	Upper Marker

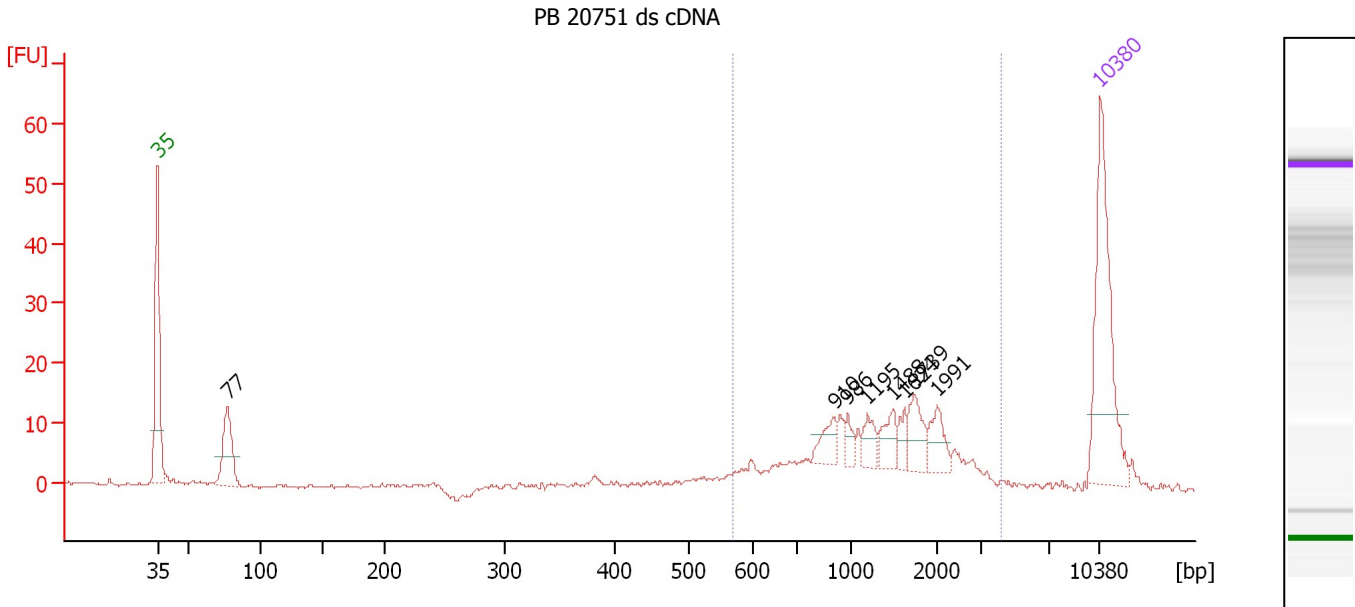
Region table for sample 6 : PB 21264 ds cDNA

From [bp]	To [bp]	Average Size [bp]	Molarity [pmol/l]	Conc. [pg/μl]	Corr. Area	% of Total	Size distribution in CV [%]	Color
557	3,953	1,432	275.1	204.08	156.9	64	45.7	Blue

Assay Class: High Sensitivity DNA Assay
 Data Path: C:\...ents and Settings\Bioanalyzer\2013-10-15\2013-10-15_001.xad

Created: 10/15/2013 4:57:58 PM
 Modified: 10/15/2013 5:41:34 PM

Electropherogram Summary Continued ...



Overall Results for sample 7 : PB 20751 ds cDNA

Number of peaks found: 8 Corr. Area 1: 161.8
 Noise: 0.3

Peak table for sample 7 : PB 20751 ds cDNA

Peak	Size [bp]	Conc. [pg/μl]	Molarity [pmol/l]	Observations
1	35	125.00	5,411.3	Lower Marker
2	77	47.52	934.9	
3	910	13.55	22.6	
4	986	6.99	10.7	
5	1,195	11.38	14.4	
6	1,488	13.38	13.6	
7	1,624	8.31	7.8	
8	1,739	17.06	14.9	
9	1,991	14.76	11.2	
10	10,380	75.00	10.9	Upper Marker

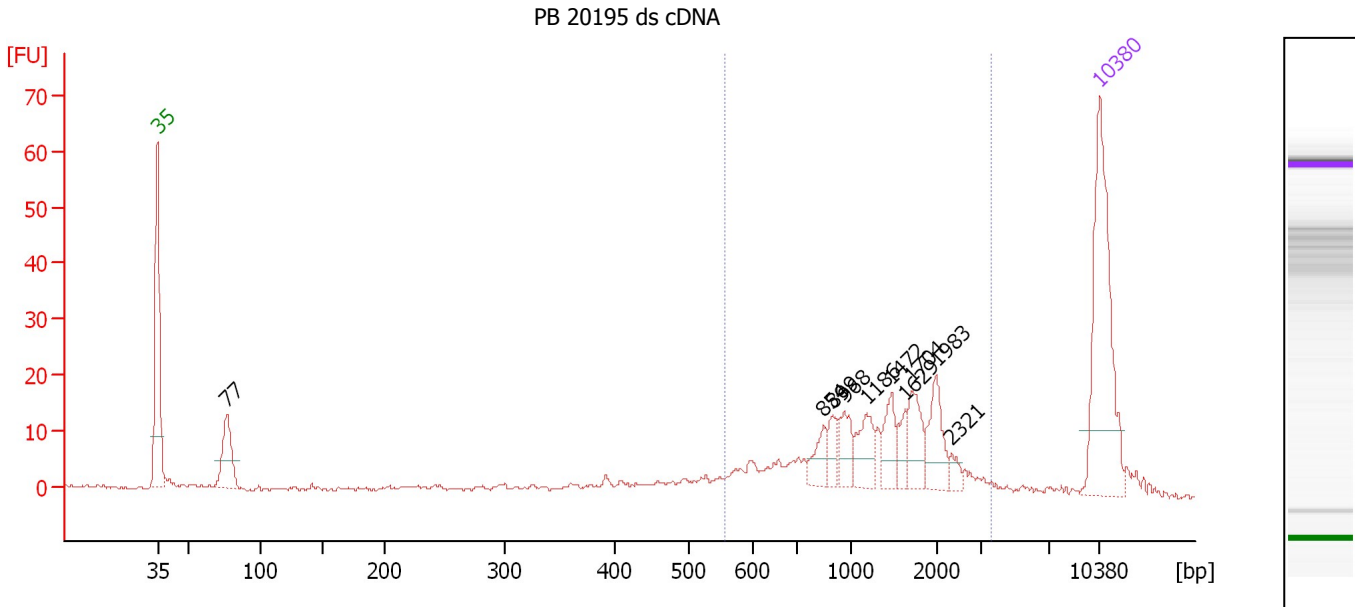
Region table for sample 7 : PB 20751 ds cDNA

From [bp]	To [bp]	Average Size [bp]	Molarity [pmol/l]	Conc. [pg/μl]	Corr. Area	% of Total	Size distribution in CV [%]	Color
569	4,217	1,433	259.5	195.40	161.8	70	45.0	Blue

Assay Class: High Sensitivity DNA Assay
 Data Path: C:\...ents and Settings\Bioanalyzer\2013-10-15\2013-10-15_001.xad

Created: 10/15/2013 4:57:58 PM
 Modified: 10/15/2013 5:41:34 PM

Electropherogram Summary Continued ...



Overall Results for sample 8 : PB 20195 ds cDNA

Number of peaks found: 10 Corr. Area 1: 194.4
 Noise: 0.3

Peak table for sample 8 : PB 20195 ds cDNA

Peak	Size [bp]	Conc. [pg/μl]	Molarity [pmol/l]	Observations
1	35	125.00	5,411.3	Lower Marker
2	77	38.76	766.3	
3	854	12.56	22.3	
4	899	10.08	17.0	
5	968	15.03	23.5	
6	1,186	18.26	23.3	
7	1,472	15.78	16.2	
8	1,629	8.48	7.9	
9	1,704	18.93	16.8	
10	1,983	20.28	15.5	
11	2,321	4.54	3.0	
12	10,380	75.00	10.9	Upper Marker

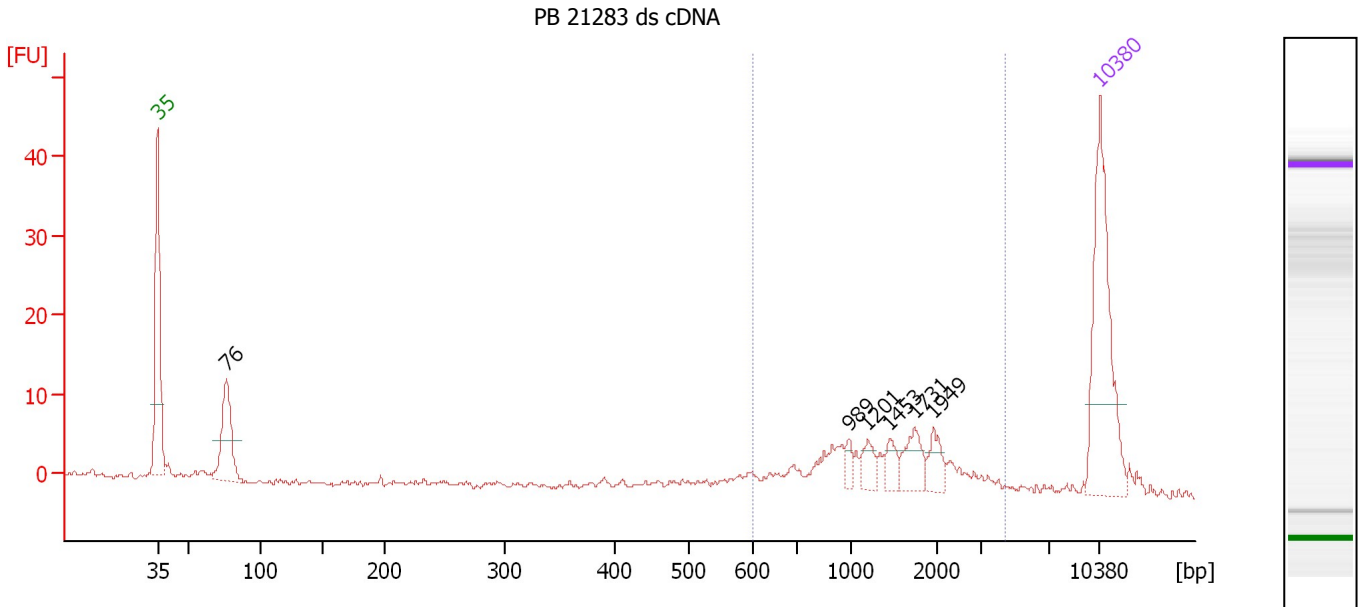
Region table for sample 8 : PB 20195 ds cDNA

From [bp]	To [bp]	Average Size [bp]	Molarity [pmol/l]	Conc. [pg/μl]	Corr. Area	% of Total	Size distribution in CV [%]	Color
554	3,537	1,370	259.9	188.29	194.4	70	42.8	Blue

Assay Class: High Sensitivity DNA Assay
 Data Path: C:\...ents and Settings\Bioanalyzer\2013-10-15\2013-10-15_001.xad

Created: 10/15/2013 4:57:58 PM
 Modified: 10/15/2013 5:41:34 PM

Electropherogram Summary Continued ...



Overall Results for sample 9 : PB 21283 ds cDNA

Number of peaks found: 6 Corr. Area 1: 79.2
 Noise: 0.2

Peak table for sample 9 : PB 21283 ds cDNA

Peak	Size [bp]	Conc. [pg/μl]	Molarity [pmol/l]	Observations
1	35	125.00	5,411.3	Lower Marker
2	76	57.82	1,151.3	
3	989	5.82	8.9	
4	1,201	9.34	11.8	
5	1,453	8.62	9.0	
6	1,731	15.60	13.6	
7	1,949	10.85	8.4	
8	10,380	75.00	10.9	Upper Marker

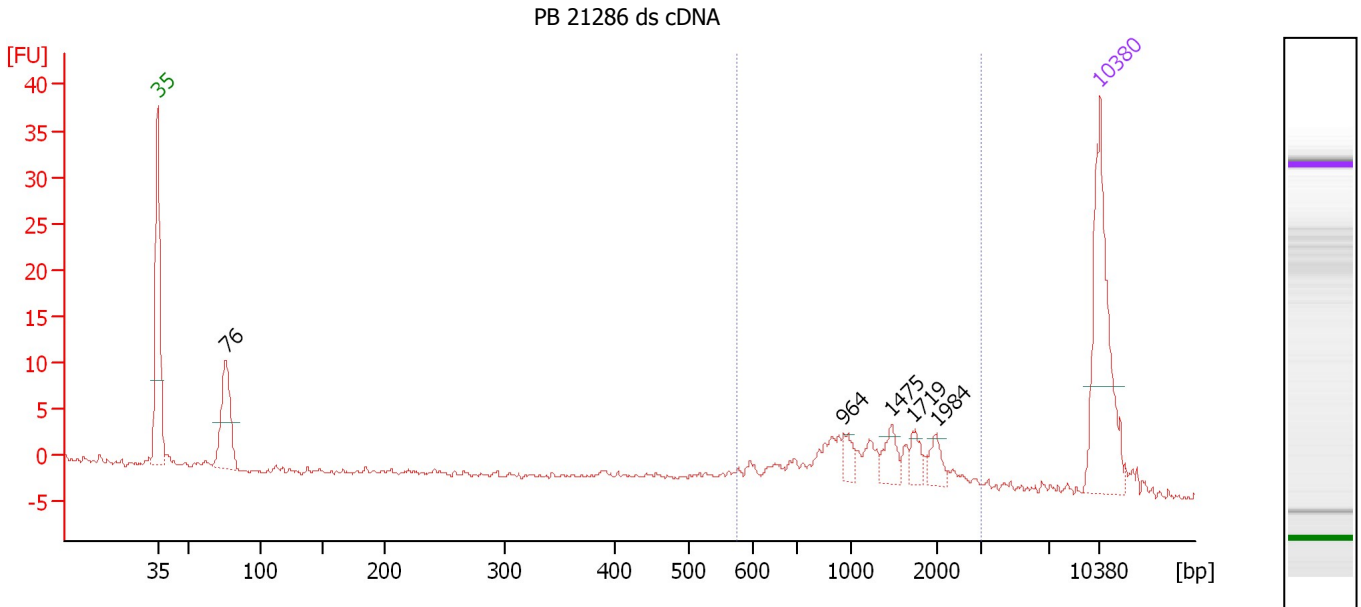
Region table for sample 9 : PB 21283 ds cDNA

From [bp]	To [bp]	Average Size [bp]	Molarity [pmol/l]	Conc. [pg/μl]	Corr. Area	% of Total	Size distribution in CV [%]	Color
601	4,390	1,524	139.9	111.80	79.2	61	47.2	Blue

Assay Class: High Sensitivity DNA Assay
 Data Path: C:\...ents and Settings\Bioanalyzer\2013-10-15\2013-10-15_001.xad

Created: 10/15/2013 4:57:58 PM
 Modified: 10/15/2013 5:41:34 PM

Electropherogram Summary Continued ...



Overall Results for sample 10 : PB 21286 ds cDNA

Number of peaks found: 5 Corr. Area 1: 61.7
 Noise: 0.3

Peak table for sample 10 : PB 21286 ds cDNA

Peak	Size [bp]	Conc. [pg/μl]	Molarity [pmol/l]	Observations
1	35	125.00	5,411.3	Lower Marker
2	76	67.38	1,349.4	
3	964	8.89	14.0	
4	1,475	12.19	12.5	
5	1,719	9.00	7.9	
6	1,984	9.20	7.0	
7	10,380	75.00	10.9	Upper Marker

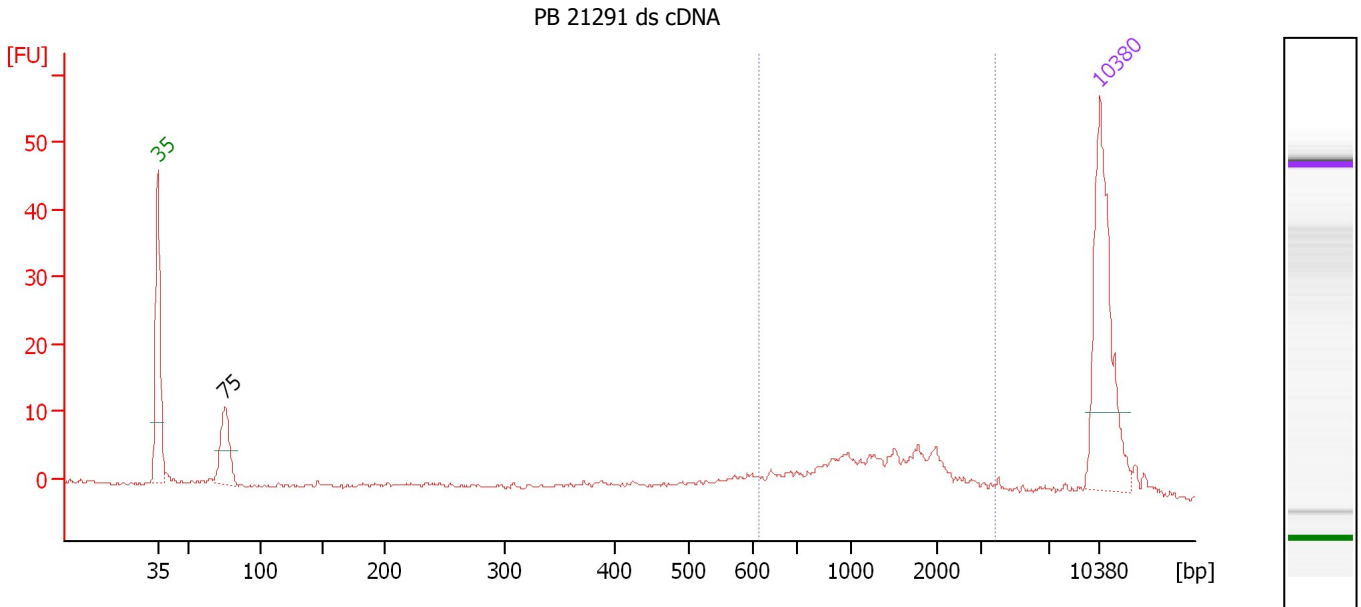
Region table for sample 10 : PB 21286 ds cDNA

From [bp]	To [bp]	Average Size [bp]	Molarity [pmol/l]	Conc. [pg/μl]	Corr. Area	% of Total	Size distribution in CV [%]	Color
575	3,039	1,323	157.3	112.99	61.7	64	41.1	Blue

Assay Class: High Sensitivity DNA Assay
 Data Path: C:\...ents and Settings\Bioanalyzer\2013-10-15\2013-10-15_001.xad

Created: 10/15/2013 4:57:58 PM
 Modified: 10/15/2013 5:41:34 PM

Electropherogram Summary Continued ...



Overall Results for sample 11 : PB 21291 ds cDNA

Number of peaks found: 1 Corr. Area 1: 69.1
 Noise: 0.3

Peak table for sample 11 : PB 21291 ds cDNA

Peak	Size [bp]	Conc. [pg/μl]	Molarity [pmol/l]	Observations
1	35	125.00	5,411.3	Lower Marker
2	75	42.27	853.6	
3	10,380	75.00	10.9	Upper Marker

Region table for sample 11 : PB 21291 ds cDNA

From [bp]	To [bp]	Average Size [bp]	Molarity [pmol/l]	Conc. [pg/μl]	Corr. Area	% of Total	Size distribution in CV [%]	Color
614	3,825	1,438	105.9	81.63	69.1	60	43.8	Blue

Assay Class: High Sensitivity DNA Assay
Data Path: C:\...ents and Settings\Bioanalyzer\2013-10-15\2013-10-15_001.xad

Created: 10/15/2013 4:57:58 PM
Modified: 10/15/2013 5:41:34 PM

Gel Image

