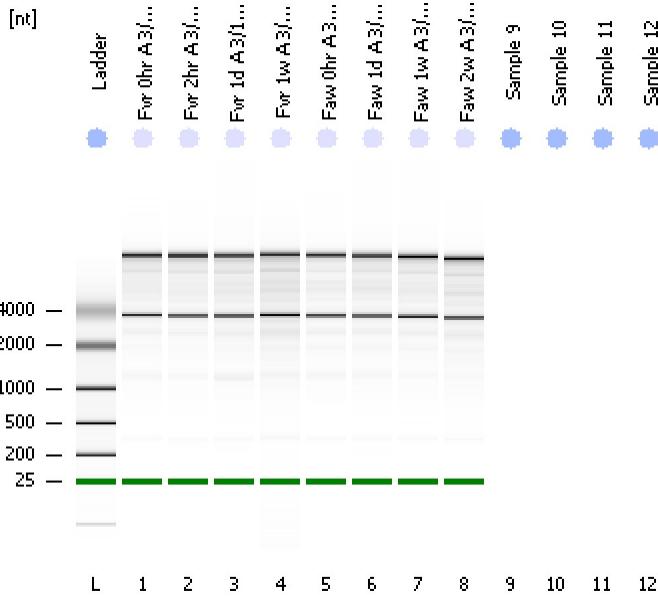


Assay Class: Eukaryote Total RNA Nano
Data Path: C:\...ents and Settings\Bioanalyzer\2013-10-16\2013-10-16_001.xad

Created: 10/16/2013 11:12:54 AM
Modified: 10/16/2013 11:31:16 AM

Electrophoresis File Run Summary



Instrument Information:

Instrument Name: DE13701086 Firmware: C.01.069
Serial#: DE13701086 Type: G2938B

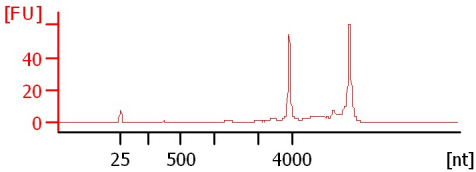
Assay Information:

Assay Origin Path: C:\Program Files\Agilent\2100 bioanalyzer\2100 expert\assays\RNA\Eukaryote Total RNA Nano Series II.xsy
Assay Class: Eukaryote Total RNA Nano
Version: 2.6
Assay Comments: Total RNA Analysis ng sensitivity (Eukaryote)
© Copyright 2003 - 2009 Agilent Technologies, Inc.

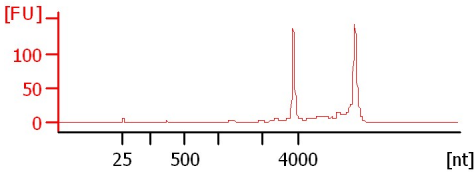
Chip Information:

Chip Lot #:
Reagent Kit Lot #:
Chip Comments:

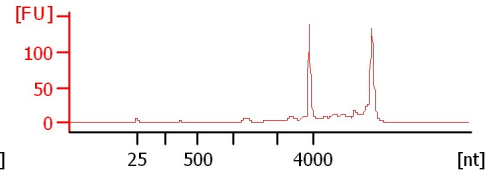
Fvr 0hr A 3/12/12
RIN: 8.80



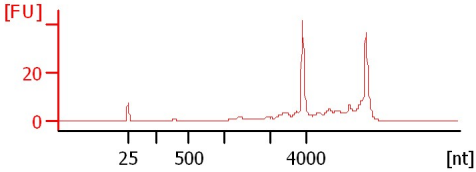
Fvr 2hr A 3/12/12
RIN: 9.10



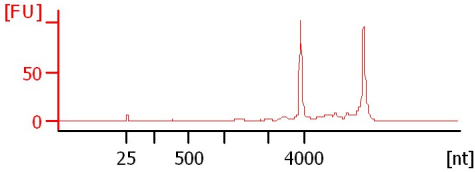
Fvr 1d A 3/13/12
RIN: 8.50



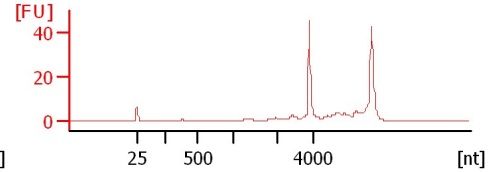
Fvr 1w A 3/19/12
RIN: 8.20



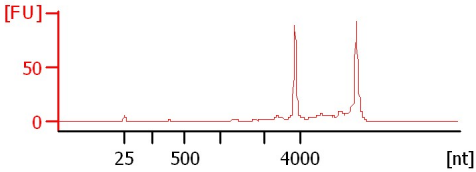
Faw 0hr A 3/4/12
RIN: 8.90



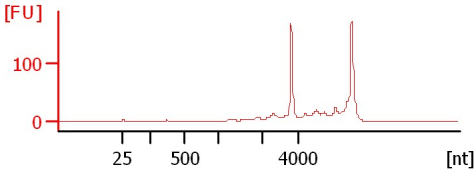
Faw 1d A 3/5/12
RIN: 8.70



Faw 1w A 3/11/12
RIN: 8.90



Faw 2w A 3/19/12
RIN: 8.40



Assay Class: Eukaryote Total RNA Nano
 Data Path: C:\...ents and Settings\Bioanalyzer\2013-10-16\2013-10-16_001.xad

Created: 10/16/2013 11:12:54 AM
 Modified: 10/16/2013 11:31:16 AM

Electrophoresis File Run Summary (Chip Summary)

Sample Name	Sample Comment	Status	Result Label	Result Color
Fvr 0hr A 3/12/12		✓	RIN: 8.80	
Fvr 2hr A 3/12/12		✓	RIN: 9.10	
Fvr 1d A 3/13/12		✓	RIN: 8.50	
Fvr 1w A 3/19/12		✓	RIN: 8.20	
Faw 0hr A 3/4/12		✓	RIN: 8.90	
Faw 1d A 3/5/12		✓	RIN: 8.70	
Faw 1w A 3/11/12		✓	RIN: 8.90	
Faw 2w A 3/19/12		✓	RIN: 8.40	
Sample 9				
Sample 10				
Sample 11				
Sample 12				
Ladder		✓	All Other Samples	

Chip Lot #

Reagent Kit Lot #

Chip Comments :

Assay Class: Eukaryote Total RNA Nano
Data Path: C:\...ents and Settings\Bioanalyzer\2013-10-16\2013-10-16_001.xad

Created: 10/16/2013 11:12:54 AM
Modified: 10/16/2013 11:31:16 AM

Electrophoresis Assay Details

General Analysis Settings

Number of Available Sample and Ladder Wells (Max.) : 13
Minimum Visible Range [s] : 17
Maximum Visible Range [s] : 70
Start Analysis Time Range [s] : 19
End Analysis Time Range [s] : 69
Ladder Concentration [ng/μl] : 150
Lower Marker Concentration [ng/μl] : 0
Upper Marker Concentration [ng/μl] : 0
Used Lower Marker for Quantitation
Standard Curve Fit is Logarithmic
Show Data Aligned to Lower Marker

Integrator Settings

Integration Start Time [s] : 19
Integration End Time [s] : 69
Slope Threshold : 0.6
Height Threshold [FU] : 0.5
Area Threshold : 0.2
Width Threshold [s] : 0.5
Baseline Plateau [s] : 6

Filter Settings

Filter Width [s] : 0.5
Polynomial Order : 4

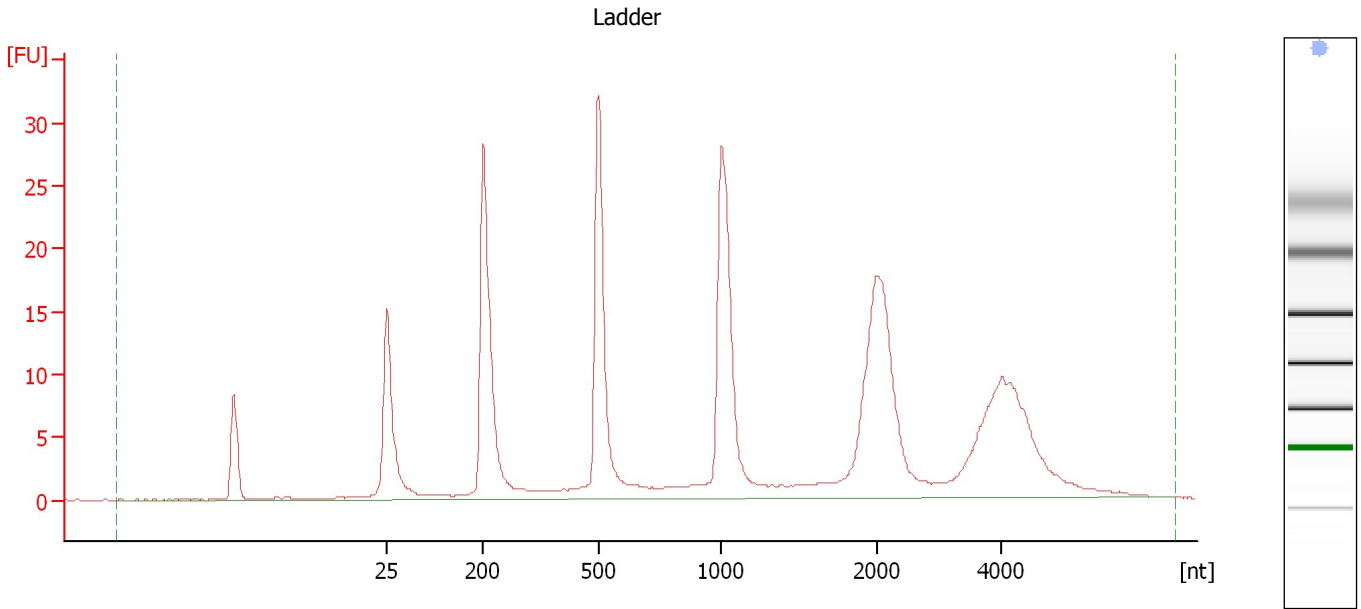
Ladder

Ladder Peak	Size
1	25
2	200
3	500
4	1000
5	2000
6	4000

Assay Class: Eukaryote Total RNA Nano
Data Path: C:\...ents and Settings\Bioanalyzer\2013-10-16\2013-10-16_001.xad

Created: 10/16/2013 11:12:54 AM
Modified: 10/16/2013 11:31:16 AM

Electropherogram Summary



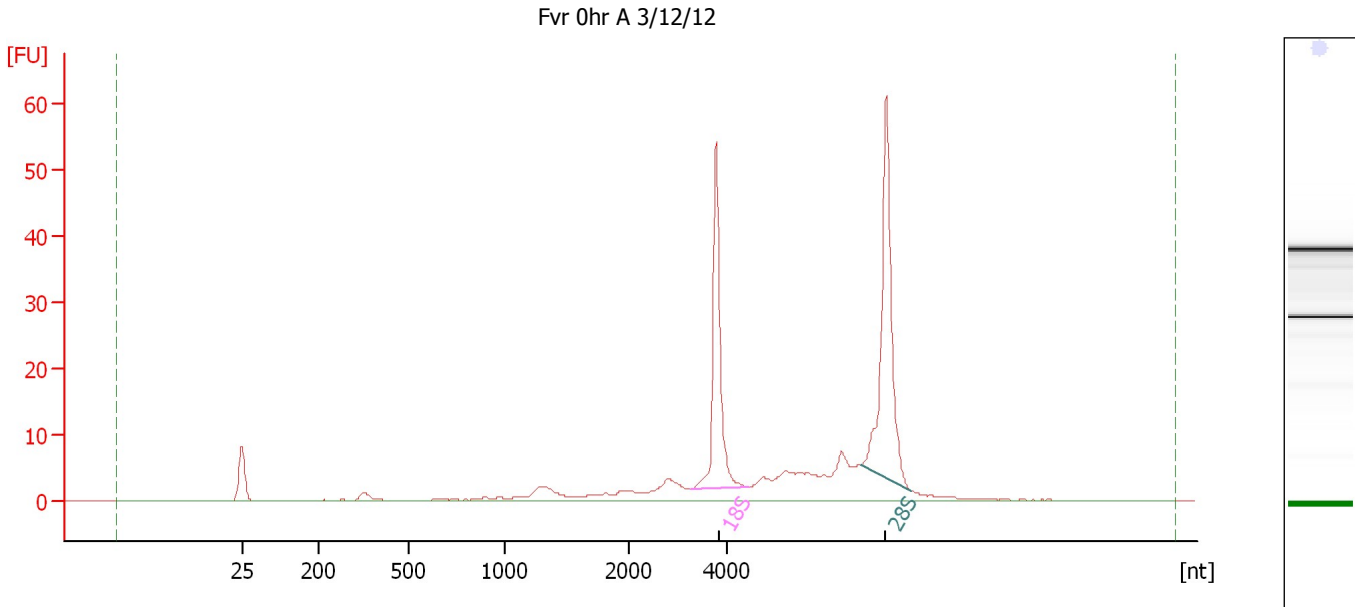
Overall Results for Ladder

RNA Area:	264.5	Result Flagging Color:	
RNA Concentration:	150 ng/μl	Result Flagging Label:	All Other Samples

Assay Class: Eukaryote Total RNA Nano
 Data Path: C:\...ents and Settings\Bioanalyzer\2013-10-16\2013-10-16_001.xad

Created: 10/16/2013 11:12:54 AM
 Modified: 10/16/2013 11:31:16 AM

Electropherogram Summary Continued ...



Overall Results for sample 1 : Fvr Ohr A 3/12/12

RNA Area:	207.9	RNA Integrity Number (RIN):	8.8 (B.02.08)
RNA Concentration:	118 ng/μl	Result Flagging Color:	
rRNA Ratio [28s / 18s]:	1.3	Result Flagging Label:	RIN: 8.80

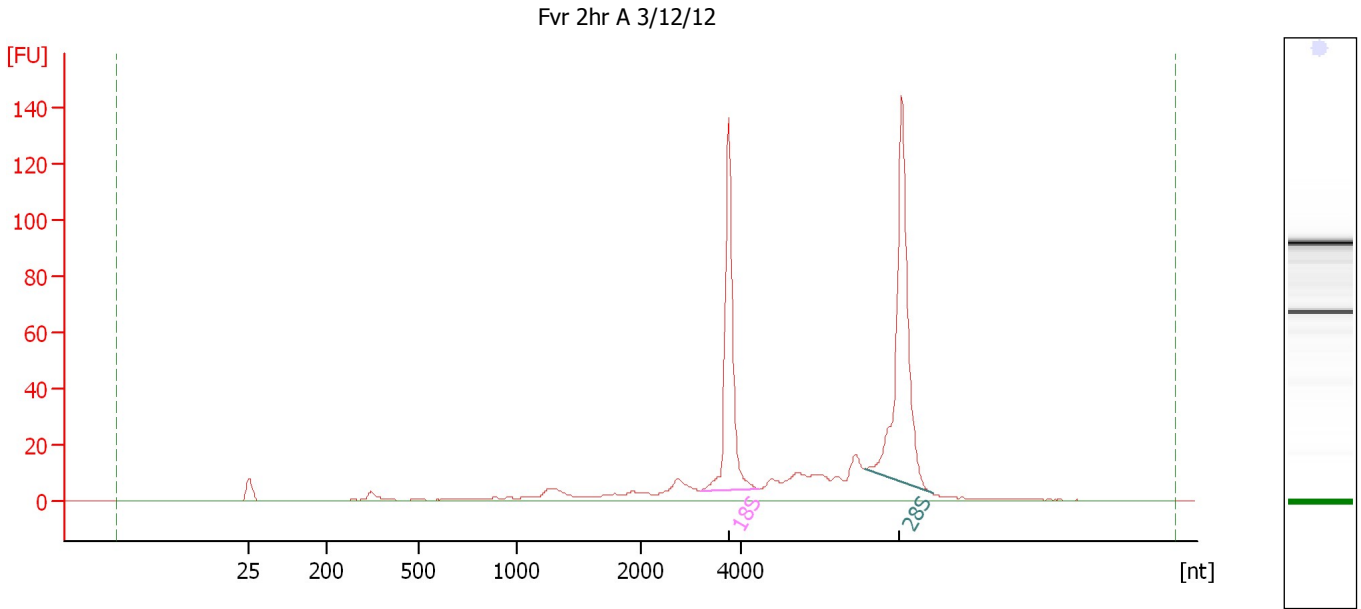
Fragment table for sample 1 : Fvr Ohr A 3/12/12

Name	Start Size [nt]	End Size [nt]	Area	% of total Area
18S	3,270	4,472	44.7	21.5
28S	6,746	7,796	56.5	27.2

Assay Class: Eukaryote Total RNA Nano
Data Path: C:\...ents and Settings\Bioanalyzer\2013-10-16\2013-10-16_001.xad

Created: 10/16/2013 11:12:54 AM
Modified: 10/16/2013 11:31:16 AM

Electropherogram Summary Continued ...



Overall Results for sample 2 : Fvr 2hr A 3/12/12

RNA Area: 490.2 RNA Integrity Number (RIN): 9.1 (B.02.08)
RNA Concentration: 278 ng/μl Result Flagging Color:
rRNA Ratio [28s / 18s]: 1.3 Result Flagging Label: RIN: 9.10

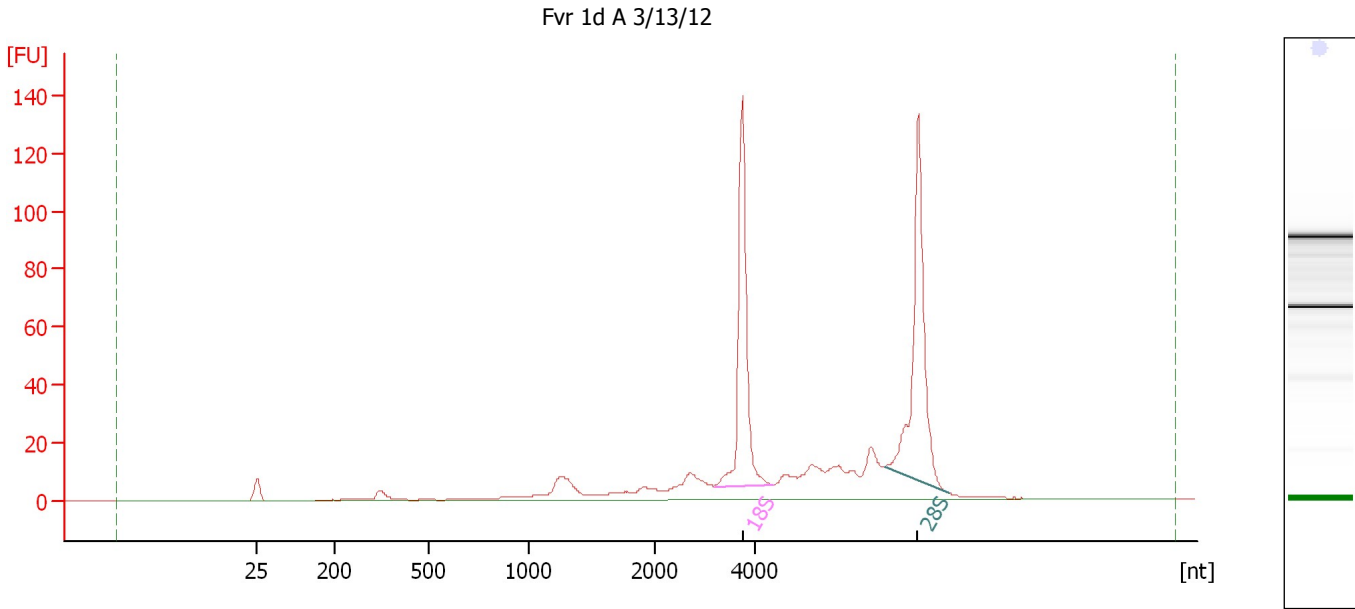
Fragment table for sample 2 : Fvr 2hr A 3/12/12

Name	Start Size [nt]	End Size [nt]	Area	% of total Area
18S	3,188	4,374	112.4	22.9
28S	6,509	7,868	151.2	30.8

Assay Class: Eukaryote Total RNA Nano
Data Path: C:\...ents and Settings\Bioanalyzer\2013-10-16\2013-10-16_001.xad

Created: 10/16/2013 11:12:54 AM
Modified: 10/16/2013 11:31:16 AM

Electropherogram Summary Continued ...



Overall Results for sample 3 : Fvr 1d A 3/13/12

RNA Area: 521.1 RNA Integrity Number (RIN): 8.5 (B.02.08)
RNA Concentration: 295 ng/μl Result Flagging Color:
rRNA Ratio [28s / 18s]: 1.2 Result Flagging Label: RIN: 8.50

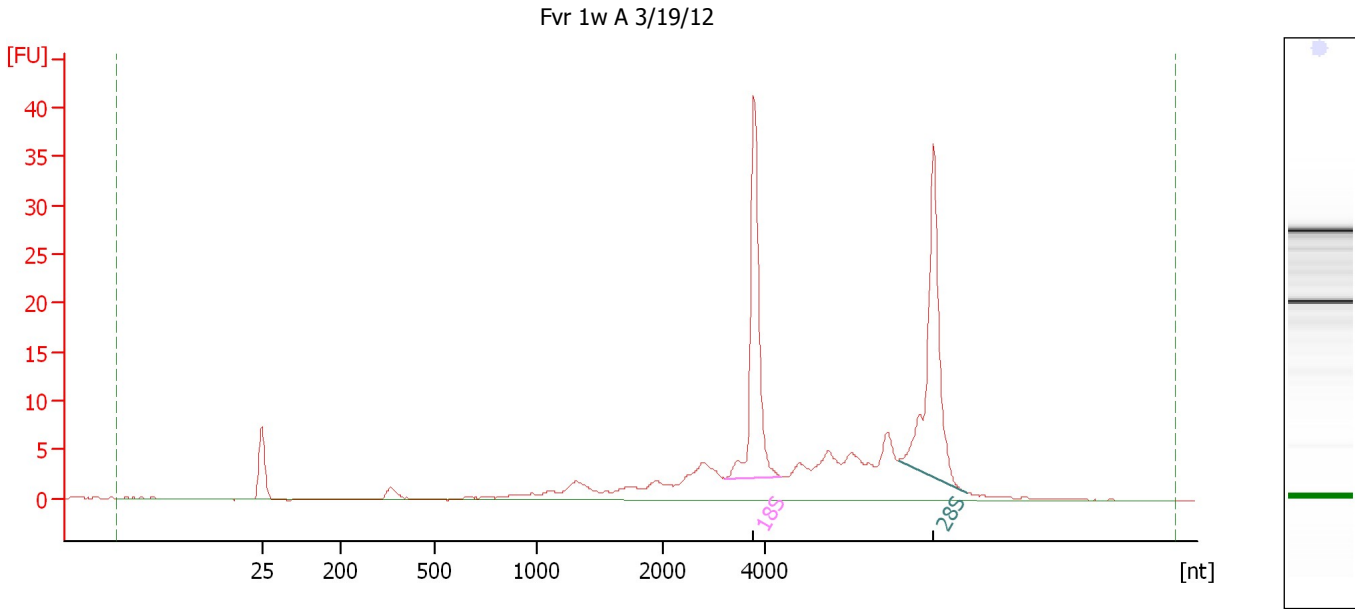
Fragment table for sample 3 : Fvr 1d A 3/13/12

Name	Start Size [nt]	End Size [nt]	Area	% of total Area
18S	3,193	4,363	113.1	21.7
28S	6,576	7,853	131.3	25.2

Assay Class: Eukaryote Total RNA Nano
Data Path: C:\...ents and Settings\Bioanalyzer\2013-10-16\2013-10-16_001.xad

Created: 10/16/2013 11:12:54 AM
Modified: 10/16/2013 11:31:16 AM

Electropherogram Summary Continued ...



Overall Results for sample 4 : Fvr 1w A 3/19/12

RNA Area: 177.1 RNA Integrity Number (RIN): 8.2 (B.02.08)
RNA Concentration: 100 ng/μl Result Flagging Color:
rRNA Ratio [28s / 18s]: 1.1 Result Flagging Label: RIN: 8.20

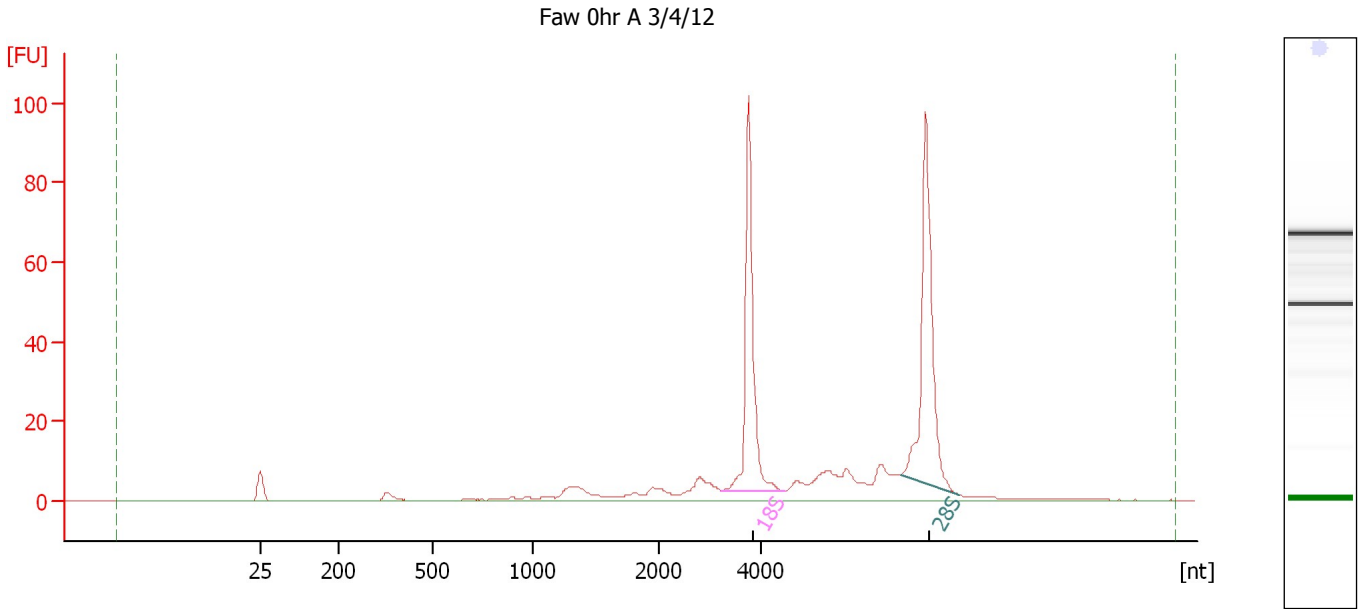
Fragment table for sample 4 : Fvr 1w A 3/19/12

Name	Start Size [nt]	End Size [nt]	Area	% of total Area
18S	3,212	4,329	34.8	19.6
28S	6,626	7,996	37.7	21.3

Assay Class: Eukaryote Total RNA Nano
Data Path: C:\...ents and Settings\Bioanalyzer\2013-10-16\2013-10-16_001.xad

Created: 10/16/2013 11:12:54 AM
Modified: 10/16/2013 11:31:16 AM

Electropherogram Summary Continued ...



Overall Results for sample 5 : Faw 0hr A 3/4/12

RNA Area: 316.4 RNA Integrity Number (RIN): 8.9 (B.02.08)
RNA Concentration: 179 ng/μl Result Flagging Color:
rRNA Ratio [28s / 18s]: 1.1 Result Flagging Label: RIN: 8.90

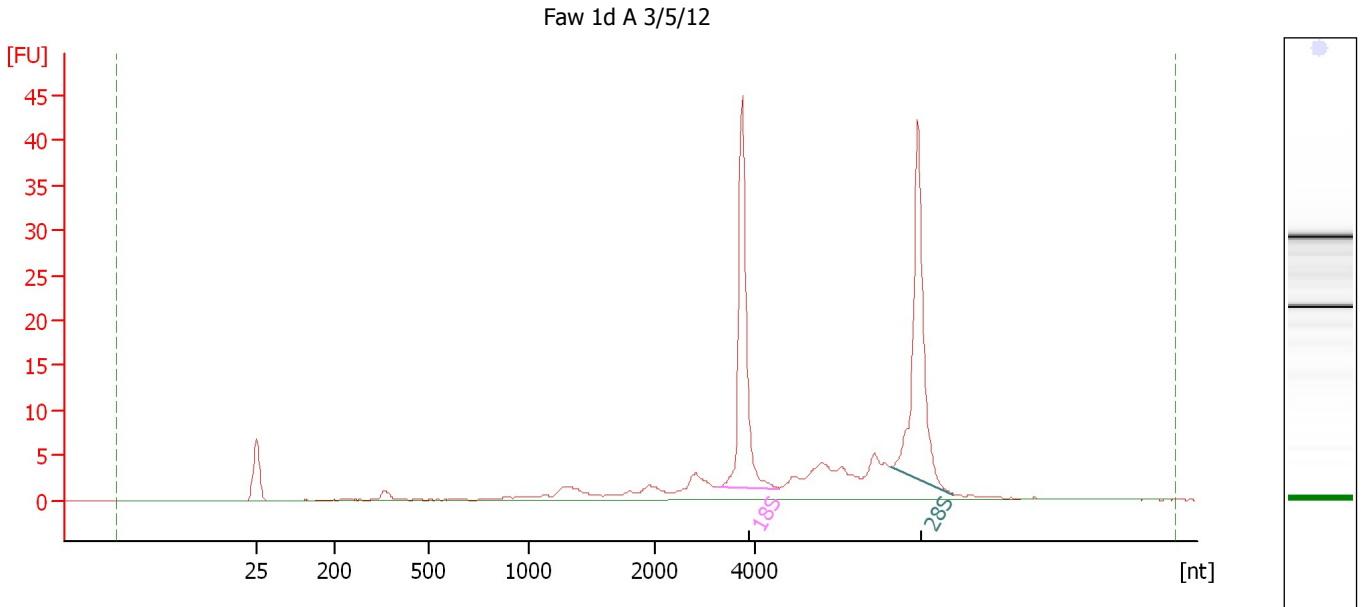
Fragment table for sample 5 : Faw 0hr A 3/4/12

Name	Start Size [nt]	End Size [nt]	Area	% of total Area
18S	3,225	4,474	81.9	25.9
28S	6,759	7,943	88.8	28.1

Assay Class: Eukaryote Total RNA Nano
 Data Path: C:\...ents and Settings\Bioanalyzer\2013-10-16\2013-10-16_001.xad

Created: 10/16/2013 11:12:54 AM
 Modified: 10/16/2013 11:31:16 AM

Electropherogram Summary Continued ...



Overall Results for sample 6 : Faw 1d A 3/5/12

RNA Area:	151.4	RNA Integrity Number (RIN):	8.7 (B.02.08)
RNA Concentration:	86 ng/μl	Result Flagging Color:	
rRNA Ratio [28s / 18s]:	1.1	Result Flagging Label:	RIN: 8.70

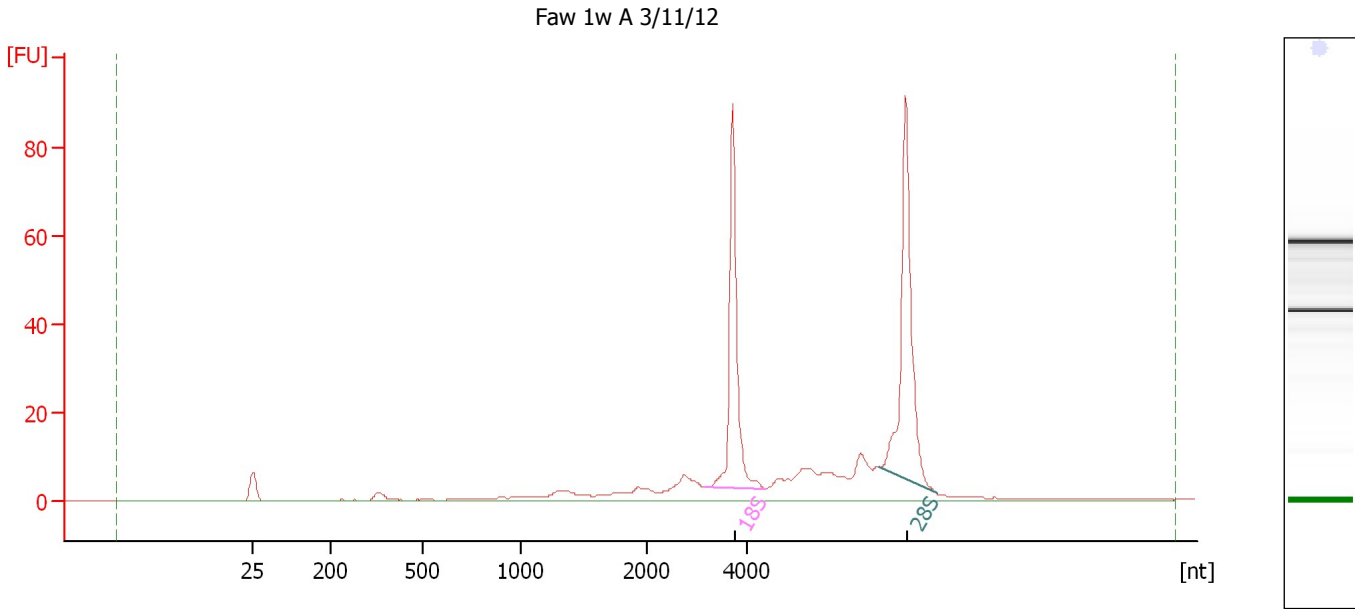
Fragment table for sample 6 : Faw 1d A 3/5/12

Name	Start Size [nt]	End Size [nt]	Area	% of total Area
18S	3,278	4,491	35.9	23.7
28S	6,704	7,959	38.9	25.7

Assay Class: Eukaryote Total RNA Nano
 Data Path: C:\...ents and Settings\Bioanalyzer\2013-10-16\2013-10-16_001.xad

Created: 10/16/2013 11:12:54 AM
 Modified: 10/16/2013 11:31:16 AM

Electropherogram Summary Continued ...



Overall Results for sample 7 : Faw 1w A 3/11/12

RNA Area:	315.7	RNA Integrity Number (RIN):	8.9 (B.02.08)
RNA Concentration:	179 ng/μl	Result Flagging Color:	
rRNA Ratio [28s / 18s]:	1.2	Result Flagging Label:	RIN: 8.90

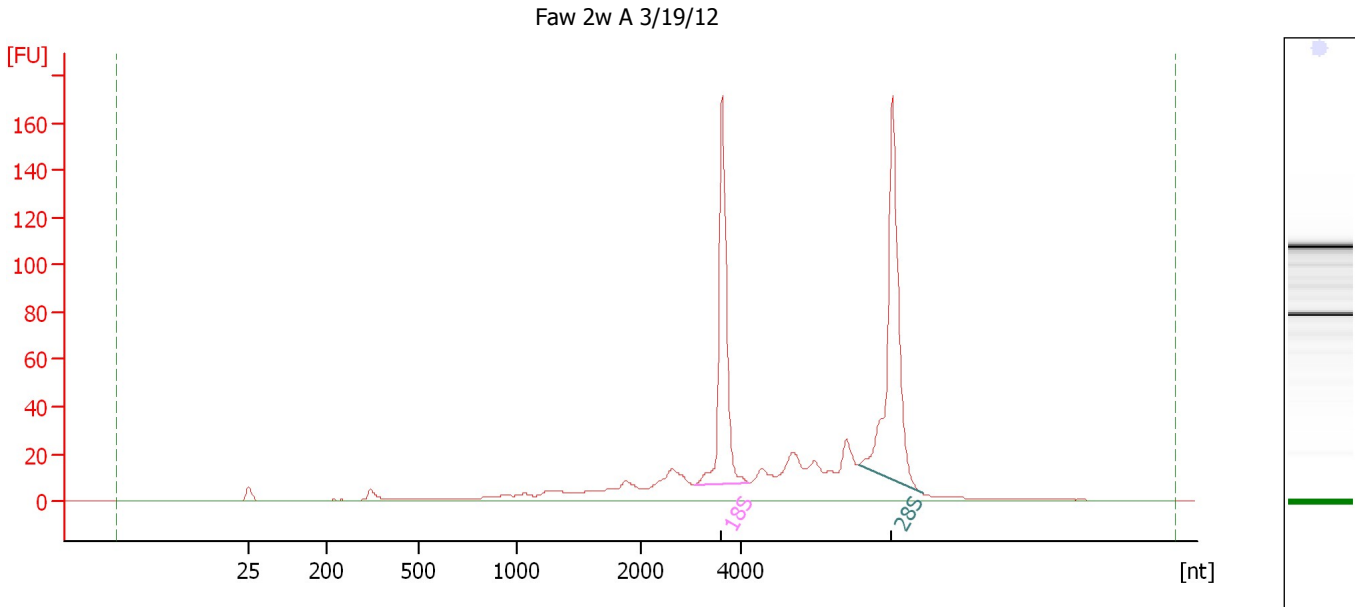
Fragment table for sample 7 : Faw 1w A 3/11/12

Name	Start Size [nt]	End Size [nt]	Area	% of total Area
18S	3,156	4,379	72.6	23.0
28S	6,673	7,809	84.5	26.8

Assay Class: Eukaryote Total RNA Nano
Data Path: C:\...ents and Settings\Bioanalyzer\2013-10-16\2013-10-16_001.xad

Created: 10/16/2013 11:12:54 AM
Modified: 10/16/2013 11:31:16 AM

Electropherogram Summary Continued ...



Overall Results for sample 8 : Faw 2w A 3/19/12

RNA Area: 688.7 RNA Integrity Number (RIN): 8.4 (B.02.08)
RNA Concentration: 391 ng/μl Result Flagging Color:
rRNA Ratio [28s / 18s]: 1.3 Result Flagging Label: RIN: 8.40

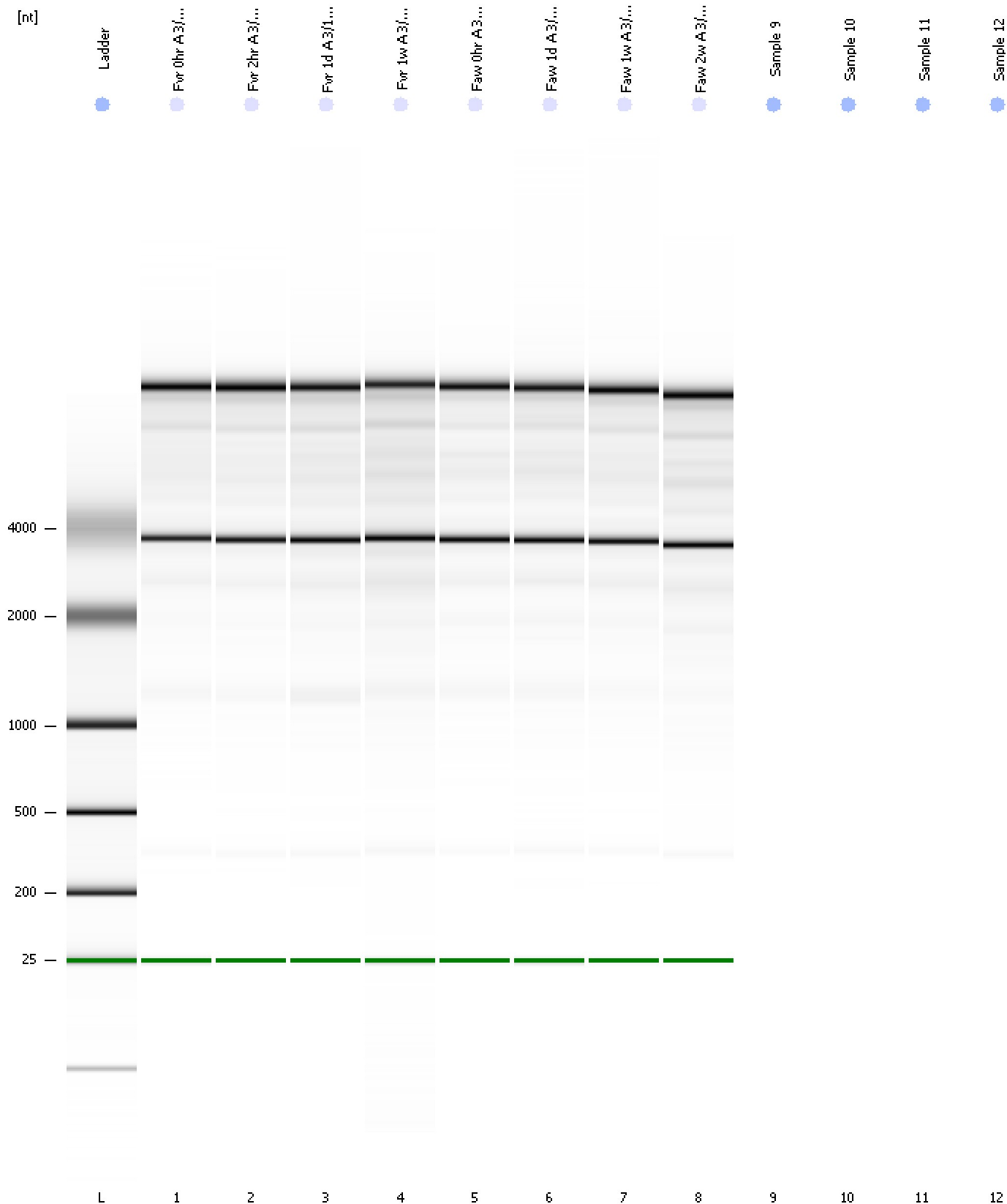
Fragment table for sample 8 : Faw 2w A 3/19/12

Name	Start Size [nt]	End Size [nt]	Area	% of total Area
18S	3,058	4,180	136.2	19.8
28S	6,380	7,674	173.1	25.1

Assay Class: Eukaryote Total RNA Nano
Data Path: C:\...ents and Settings\Bioanalyzer\2013-10-16\2013-10-16_001.xad

Created: 10/16/2013 11:12:54 AM
Modified: 10/16/2013 11:31:16 AM

Gel Image



Assay Class: Eukaryote Total RNA Nano
Data Path: C:\...ents and Settings\Bioanalyzer\2013-10-16\2013-10-16_001.xad

Created: 10/16/2013 11:12:54 AM
Modified: 10/16/2013 11:31:16 AM

Invalid Samples

Sample 9 has not been run, no results available.

Sample 10 has not been run, no results available.

Sample 11 has not been run, no results available.

Sample 12 has not been run, no results available.