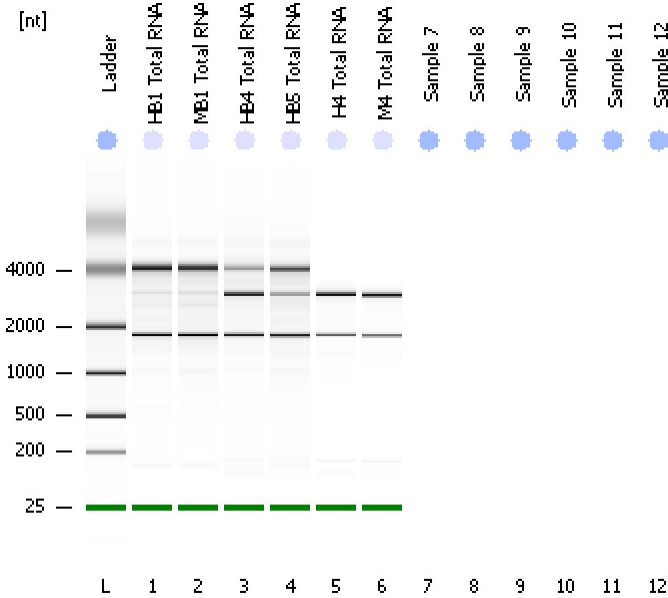


Assay Class: Eukaryote Total RNA Nano
 Data Path: C:\...ents and Settings\Bioanalyzer\2013-10-16\2013-10-16_003.xad

Created: 10/16/2013 12:43:24 PM
 Modified: 10/16/2013 1:00:31 PM

Electrophoresis File Run Summary



Instrument Information:

Instrument Name: DE13701086 Firmware: C.01.069
 Serial#: DE13701086 Type: G2938B

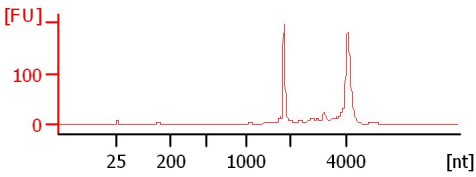
Assay Information:

Assay Origin Path: C:\Program Files\Agilent\2100 bioanalyzer\2100 expert\assays\RNA\Eukaryote Total RNA Nano Series II.xsy
 Assay Class: Eukaryote Total RNA Nano
 Version: 2.6
 Assay Comments: Total RNA Analysis ng sensitivity (Eukaryote)
 © Copyright 2003 - 2009 Agilent Technologies, Inc.

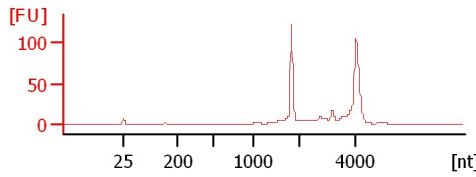
Chip Information:

Chip Lot #:
 Reagent Kit Lot #:
 Chip Comments:

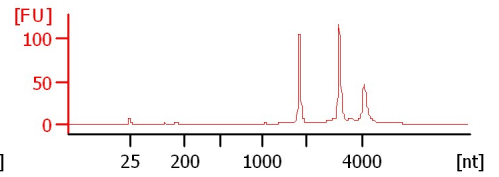
HB1 Total RNA
 RIN: 9.30



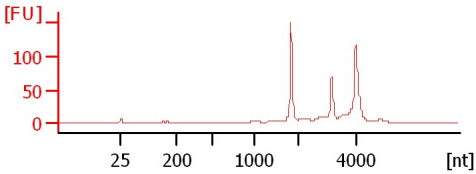
MB1 Total RNA
 RIN: 9.10



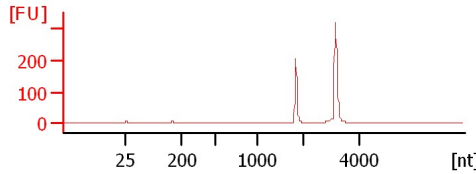
HB4 Total RNA
 RIN: 8.60



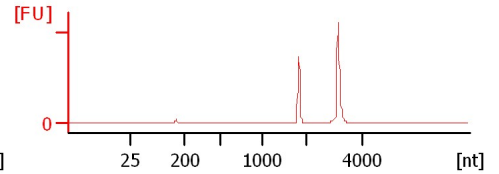
HB5 Total RNA
 RIN: 8.90



H4 Total RNA
 RIN: 6.70



M4 Total RNA
 RIN: 6.50



Assay Class: Eukaryote Total RNA Nano
 Data Path: C:\...ents and Settings\Bioanalyzer\2013-10-16\2013-10-16_003.xad

Created: 10/16/2013 12:43:24 PM
 Modified: 10/16/2013 1:00:31 PM

Electrophoresis File Run Summary (Chip Summary)

Sample Name	Sample Comment	Status	Result Label	Result Color
HB1 Total RNA		✓	RIN: 9.30	
MB1 Total RNA		✓	RIN: 9.10	
HB4 Total RNA		✓	RIN: 8.60	
HB5 Total RNA		✓	RIN: 8.90	
H4 Total RNA		✓	RIN: 6.70	
M4 Total RNA		✓	RIN: 6.50	
Sample 7				
Sample 8				
Sample 9				
Sample 10				
Sample 11				
Sample 12				
Ladder		✓	All Other Samples	

Chip Lot #

Reagent Kit Lot #

Chip Comments :

Assay Class: Eukaryote Total RNA Nano
Data Path: C:\...ents and Settings\Bioanalyzer\2013-10-16\2013-10-16_003.xad

Created: 10/16/2013 12:43:24 PM
Modified: 10/16/2013 1:00:31 PM

Electrophoresis Assay Details

General Analysis Settings

Number of Available Sample and Ladder Wells (Max.) : 13
Minimum Visible Range [s] : 17
Maximum Visible Range [s] : 70
Start Analysis Time Range [s] : 19
End Analysis Time Range [s] : 69
Ladder Concentration [ng/ μ l] : 150
Lower Marker Concentration [ng/ μ l] : 0
Upper Marker Concentration [ng/ μ l] : 0
Used Lower Marker for Quantitation
Standard Curve Fit is Logarithmic
Show Data Aligned to Lower Marker

Integrator Settings

Integration Start Time [s] : 19
Integration End Time [s] : 69
Slope Threshold : 0.6
Height Threshold [FU] : 0.5
Area Threshold : 0.2
Width Threshold [s] : 0.5
Baseline Plateau [s] : 6

Filter Settings

Filter Width [s] : 0.5
Polynomial Order : 4

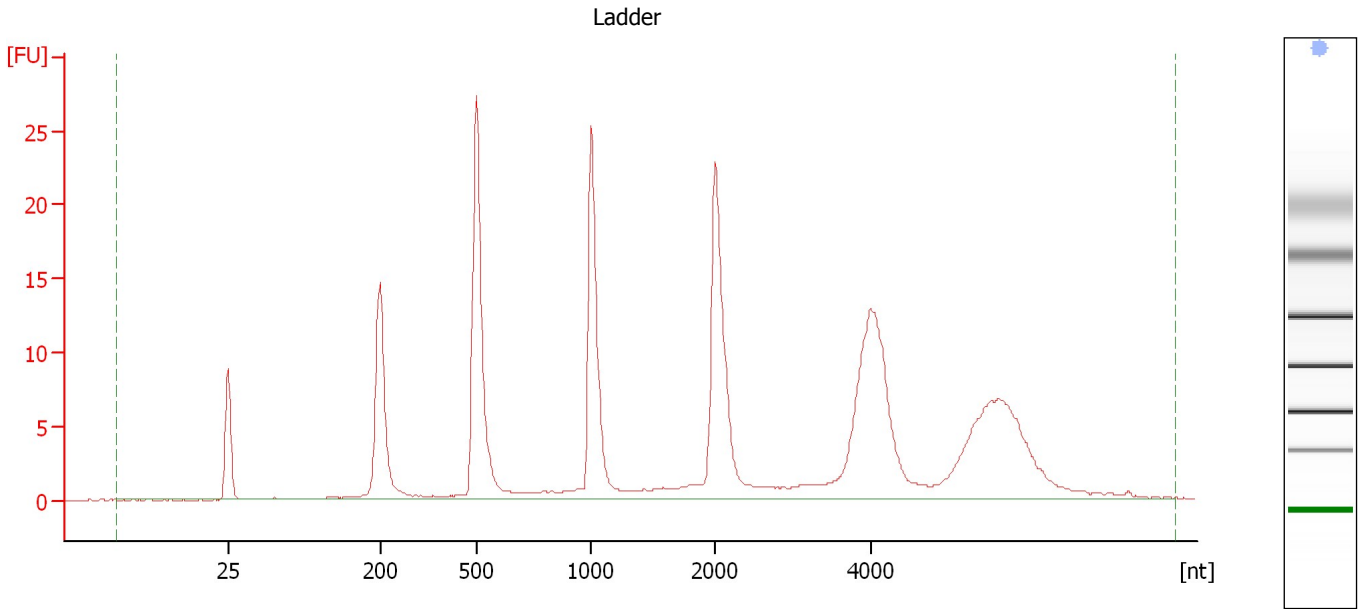
Ladder

Ladder Peak	Size
1	25
2	200
3	500
4	1000
5	2000
6	4000

Assay Class: Eukaryote Total RNA Nano
Data Path: C:\...ents and Settings\Bioanalyzer\2013-10-16\2013-10-16_003.xad

Created: 10/16/2013 12:43:24 PM
Modified: 10/16/2013 1:00:31 PM

Electropherogram Summary



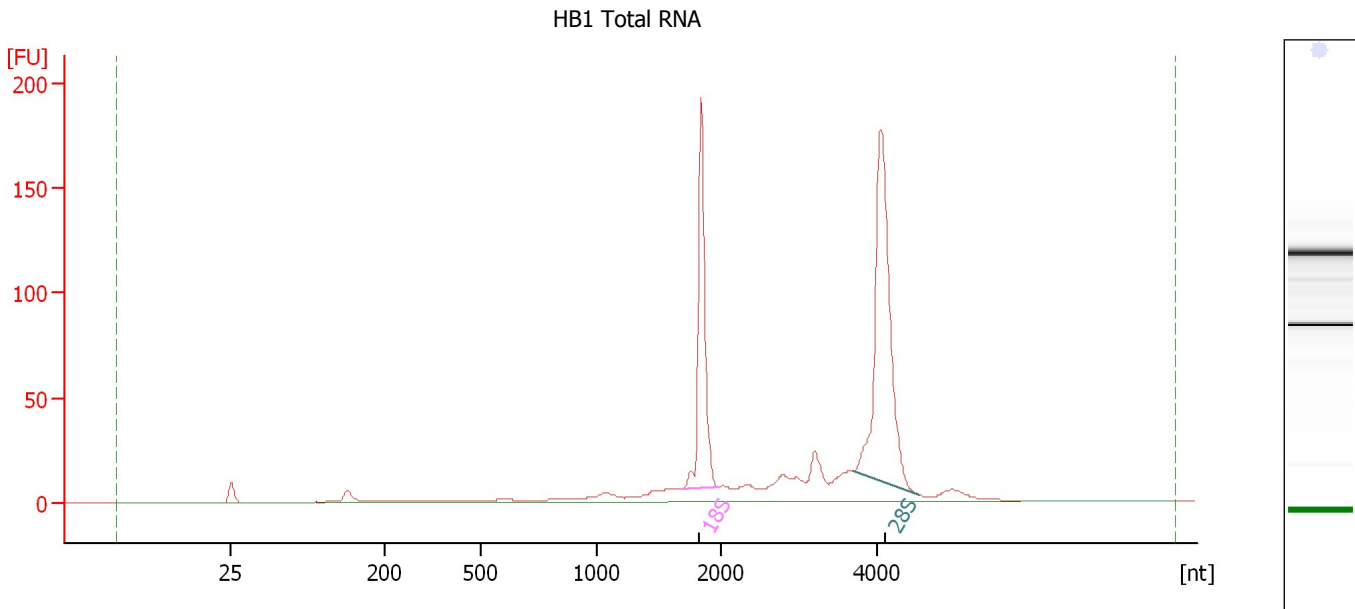
Overall Results for Ladder

RNA Area:	221.8	Result Flagging Color:	
RNA Concentration:	150 ng/μl	Result Flagging Label:	All Other Samples

Assay Class: Eukaryote Total RNA Nano
Data Path: C:\...ents and Settings\Bioanalyzer\2013-10-16\2013-10-16_003.xad

Created: 10/16/2013 12:43:24 PM
Modified: 10/16/2013 1:00:31 PM

Electropherogram Summary Continued ...



Overall Results for sample 1 : HB1 Total RNA

RNA Area: 694.6 RNA Integrity Number (RIN): 9.3 (B.02.08)
RNA Concentration: 470 ng/μl Result Flagging Color:
rRNA Ratio [28s / 18s]: 1.7 Result Flagging Label: RIN: 9.30

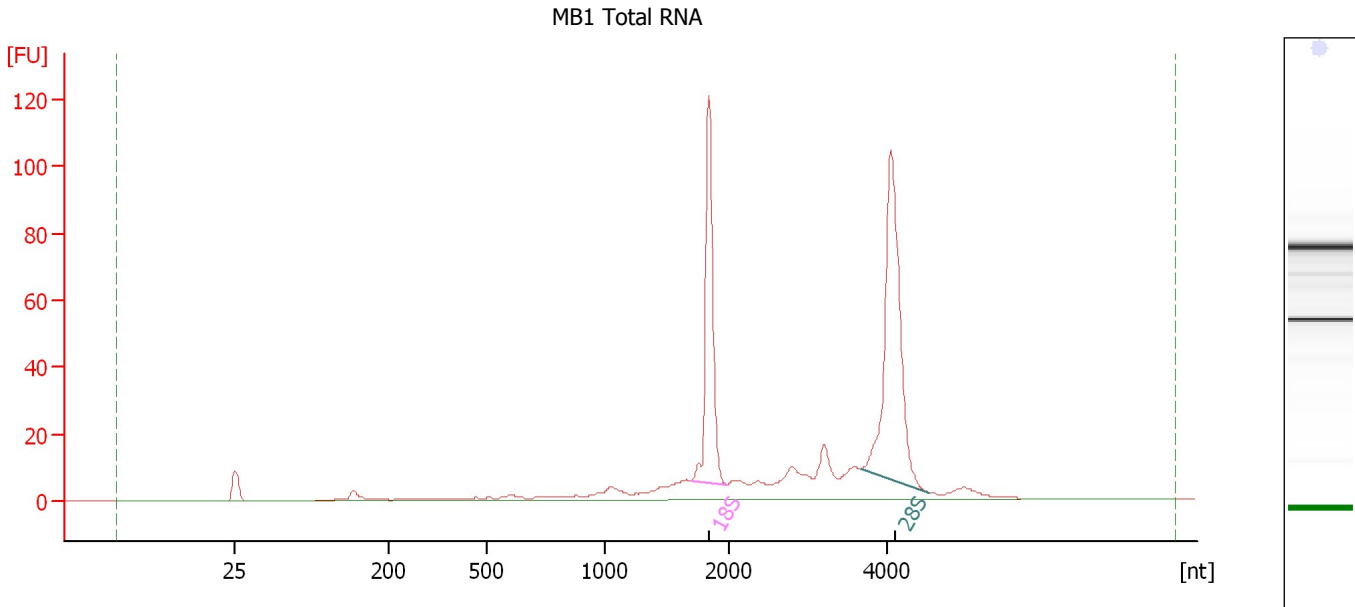
Fragment table for sample 1 : HB1 Total RNA

Name	Start Size [nt]	End Size [nt]	Area	% of total Area
18S	1,676	1,976	144.7	20.8
28S	3,689	4,525	239.9	34.5

Assay Class: Eukaryote Total RNA Nano
Data Path: C:\...ents and Settings\Bioanalyzer\2013-10-16\2013-10-16_003.xad

Created: 10/16/2013 12:43:24 PM
Modified: 10/16/2013 1:00:31 PM

Electropherogram Summary Continued ...



Overall Results for sample 2 : MB1 Total RNA

RNA Area: 446.2 RNA Integrity Number (RIN): 9.1 (B.02.08)
RNA Concentration: 302 ng/μl Result Flagging Color:
rRNA Ratio [28s / 18s]: 1.6 Result Flagging Label: RIN: 9.10

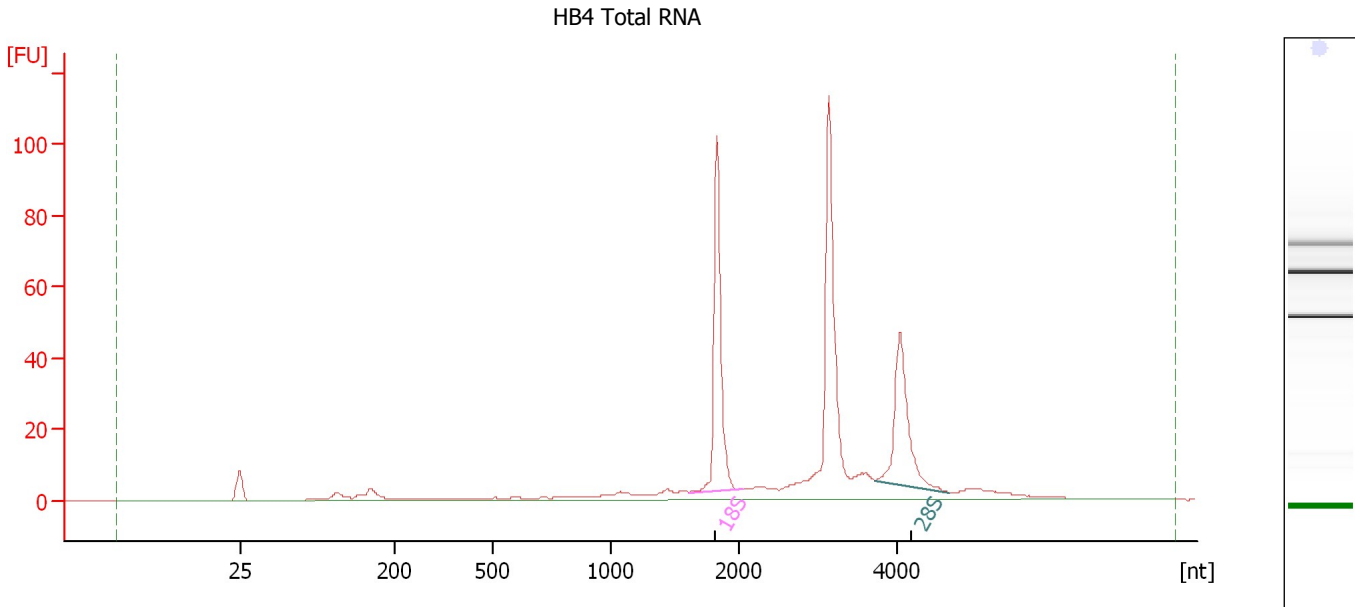
Fragment table for sample 2 : MB1 Total RNA

Name	Start Size [nt]	End Size [nt]	Area	% of total Area
18S	1,690	1,979	91.3	20.5
28S	3,666	4,536	144.2	32.3

Assay Class: Eukaryote Total RNA Nano
Data Path: C:\...ents and Settings\Bioanalyzer\2013-10-16\2013-10-16_003.xad

Created: 10/16/2013 12:43:24 PM
Modified: 10/16/2013 1:00:31 PM

Electropherogram Summary Continued ...



Overall Results for sample 3 : HB4 Total RNA

RNA Area: 390.0 RNA Integrity Number (RIN): 8.6 (B.02.08)
RNA Concentration: 264 ng/μl Result Flagging Color:
rRNA Ratio [28s / 18s]: 0.7 Result Flagging Label: RIN: 8.60

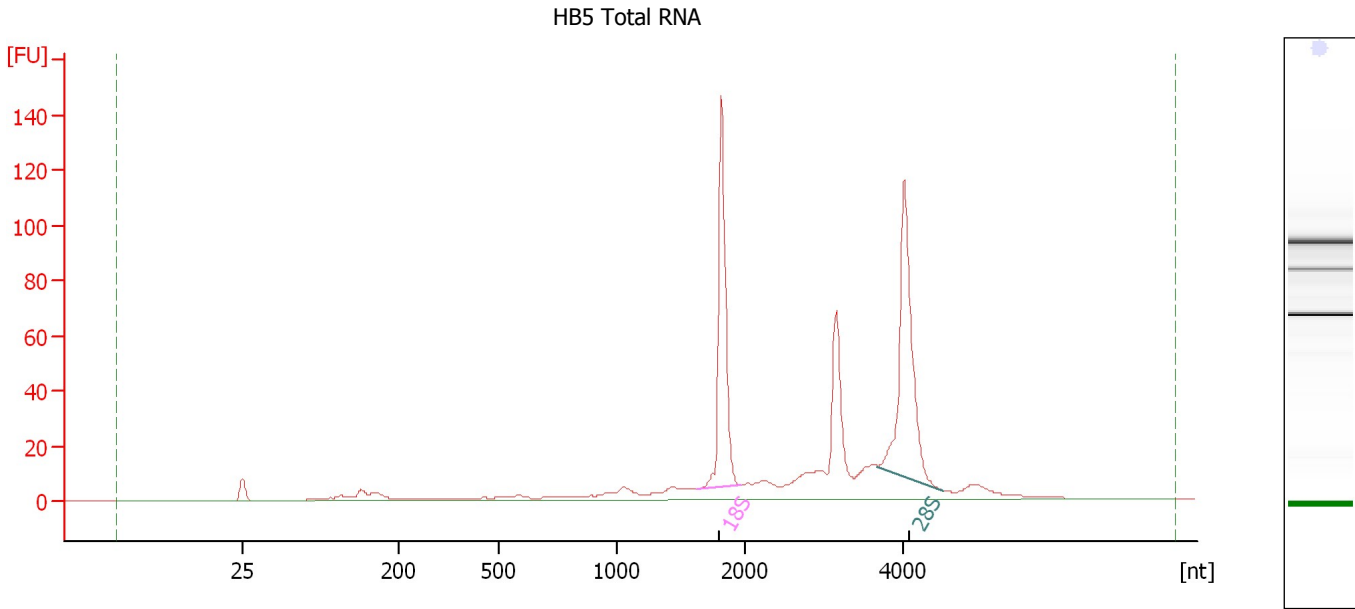
Fragment table for sample 3 : HB4 Total RNA

Name	Start Size [nt]	End Size [nt]	Area	% of total Area
18S	1,619	2,051	80.1	20.5
28S	3,724	4,669	54.5	14.0

Assay Class: Eukaryote Total RNA Nano
Data Path: C:\...ents and Settings\Bioanalyzer\2013-10-16\2013-10-16_003.xad

Created: 10/16/2013 12:43:24 PM
Modified: 10/16/2013 1:00:31 PM

Electropherogram Summary Continued ...



Overall Results for sample 4 : HB5 Total RNA

RNA Area:	541.6	RNA Integrity Number (RIN):	8.9 (B.02.08)
RNA Concentration:	366 ng/μl	Result Flagging Color:	
rRNA Ratio [28s / 18s]:	1.2	Result Flagging Label:	RIN: 8.90

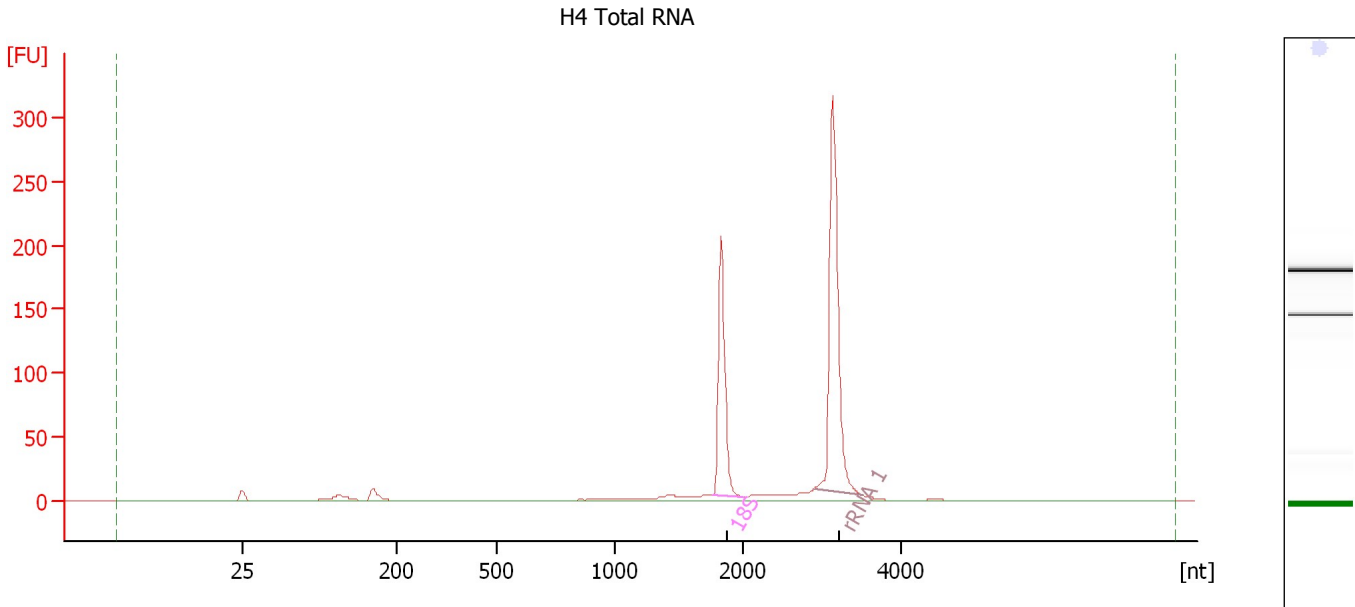
Fragment table for sample 4 : HB5 Total RNA

Name	Start Size [nt]	End Size [nt]	Area	% of total Area
18S	1,623	1,975	110.8	20.5
28S	3,677	4,495	128.0	23.6

Assay Class: Eukaryote Total RNA Nano
 Data Path: C:\...ents and Settings\Bioanalyzer\2013-10-16\2013-10-16_003.xad

Created: 10/16/2013 12:43:24 PM
 Modified: 10/16/2013 1:00:31 PM

Electropherogram Summary Continued ...



Overall Results for sample 5 : H4 Total RNA

RNA Area:	580.8	RNA Integrity Number (RIN):	6.7 (B.02.08, Anomaly Threshold(s) manually adapted)
RNA Concentration:	393 ng/μl	Result Flagging Color:	
rRNA Ratio [28s / 18s]:	0.0	Result Flagging Label:	RIN: 6.70

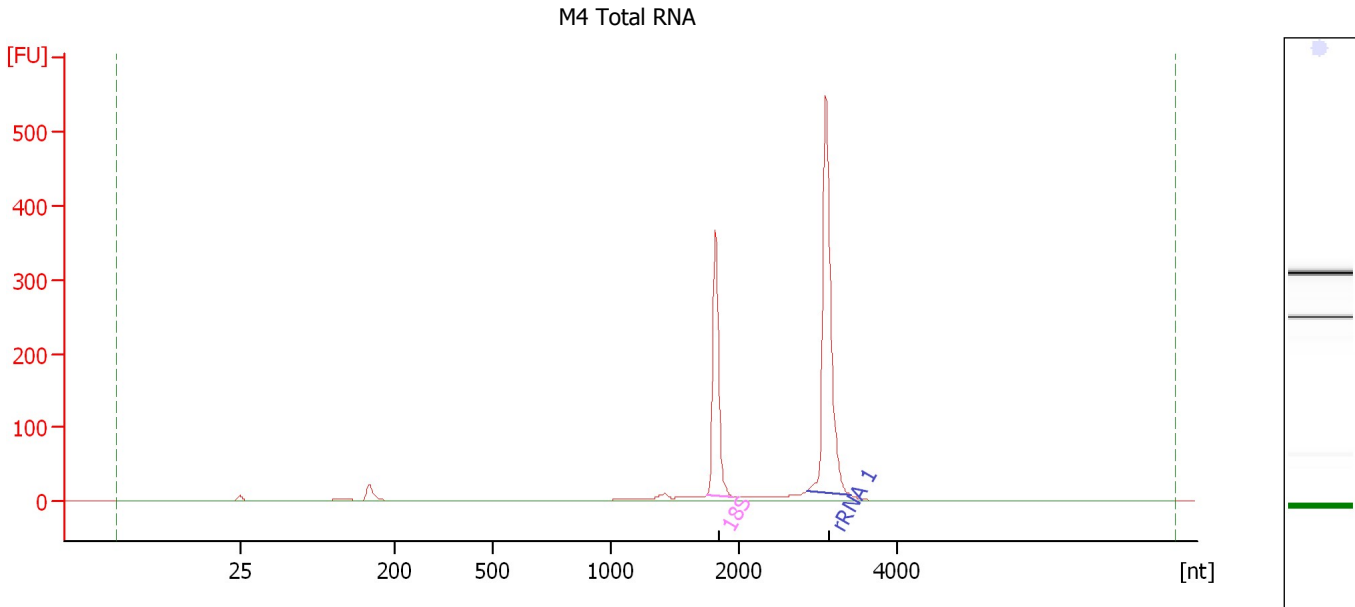
Fragment table for sample 5 : H4 Total RNA

Name	Start Size [nt]	End Size [nt]	Area	% of total Area
18S	1,767	2,018	144.9	25.0
rRNA 1	2,912	3,524	259.8	44.7

Assay Class: Eukaryote Total RNA Nano
 Data Path: C:\...ents and Settings\Bioanalyzer\2013-10-16\2013-10-16_003.xad

Created: 10/16/2013 12:43:24 PM
 Modified: 10/16/2013 1:00:31 PM

Electropherogram Summary Continued ...



Overall Results for sample 6 : M4 Total RNA

RNA Area:	970.5	RNA Integrity Number (RIN):	6.5 (B.02.08, Anomaly Threshold(s) manually adapted)
RNA Concentration:	656 ng/μl	Result Flagging Color:	
rRNA Ratio [28s / 18s]:	0.0	Result Flagging Label:	RIN: 6.50

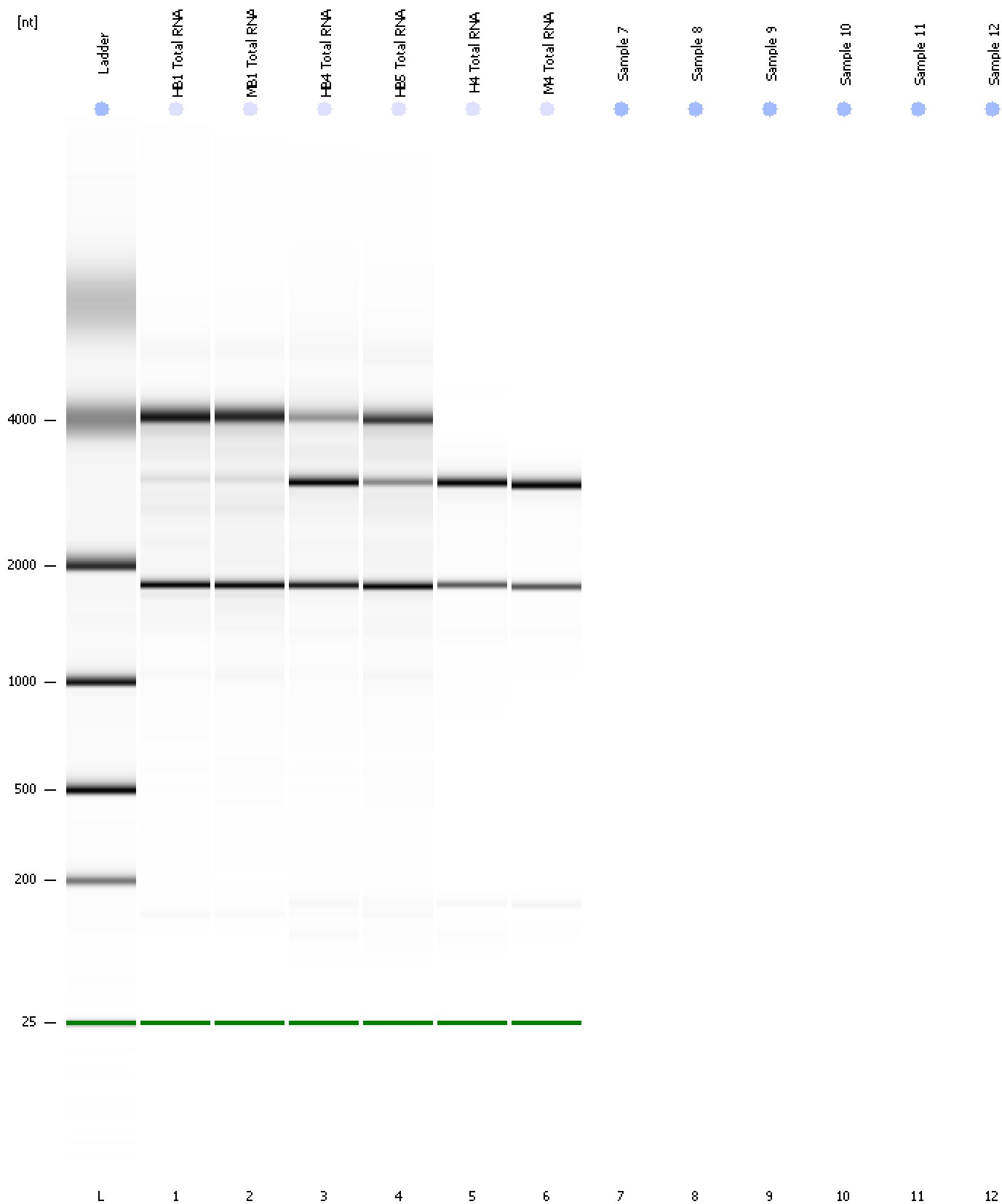
Fragment table for sample 6 : M4 Total RNA

Name	Start Size [nt]	End Size [nt]	Area	% of total Area
18S	1,753	1,955	259.6	26.7
rRNA 1	2,867	3,417	466.8	48.1

Assay Class: Eukaryote Total RNA Nano
Data Path: C:\...ents and Settings\Bioanalyzer\2013-10-16\2013-10-16_003.xad

Created: 10/16/2013 12:43:24 PM
Modified: 10/16/2013 1:00:31 PM

Gel Image



Assay Class: Eukaryote Total RNA Nano
Data Path: C:\...ents and Settings\Bioanalyzer\2013-10-16\2013-10-16_003.xad

Created: 10/16/2013 12:43:24 PM
Modified: 10/16/2013 1:00:31 PM

Invalid Samples

Sample 7 has not been run, no results available.

Sample 8 has not been run, no results available.

Sample 9 has not been run, no results available.

Sample 10 has not been run, no results available.

Sample 11 has not been run, no results available.

Sample 12 has not been run, no results available.