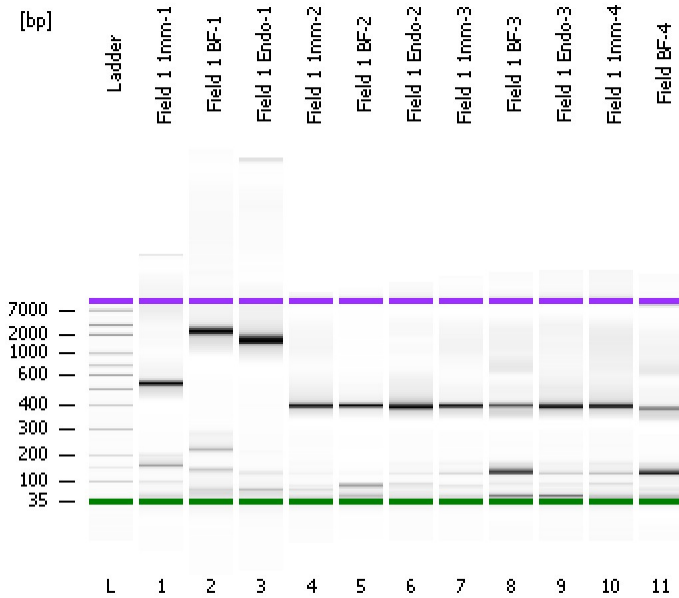


Assay Class: High Sensitivity DNA Assay
Data Path: C:\...ents and Settings\UC Davis\Desktop\2013-10-16_004_fixed.xad

Created: 10/16/2013 1:27:32 PM
Modified: 10/16/2013 2:48:15 PM

Electrophoresis File Run Summary



Instrument Information:

Instrument Name: DE13701086 Firmware: C.01.069
Serial#: DE13701086 Type: G2938B

Assay Information:

Assay Origin Path: C:\Program Files\Agilent\2100 bioanalyzer\2100 expert\assays\dsDNA\High Sensitivity DNA.xsy
Assay Class: High Sensitivity DNA Assay
Version: 1.03
Assay Comments: Copyright © 2003-2010 Agilent Technologies

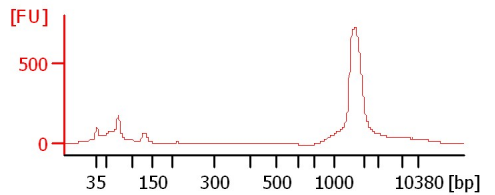
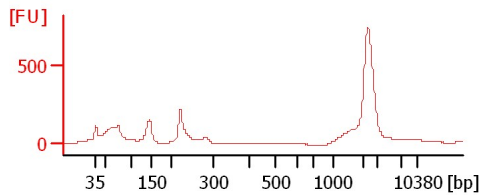
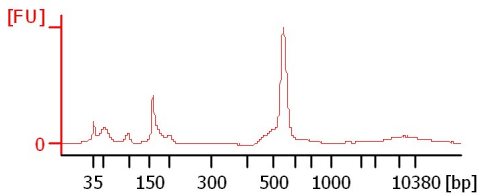
Chip Information:

Chip Lot #:
Reagent Kit Lot #:
Chip Comments:

Field 1 1mm-1

Field 1 BF-1

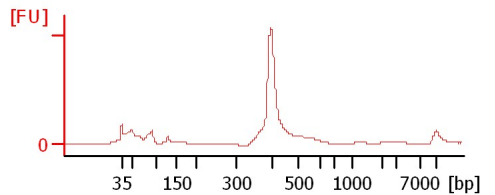
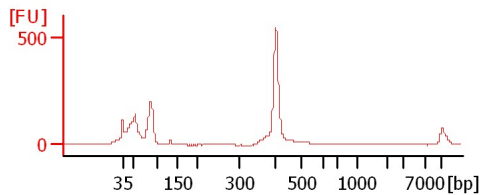
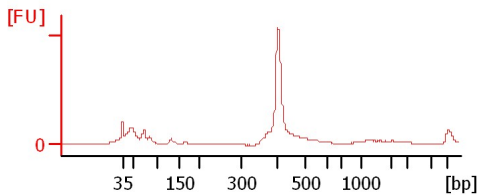
Field 1 Endo-1



Field 1 1mm-2

Field 1 BF-2

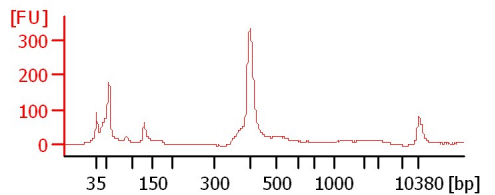
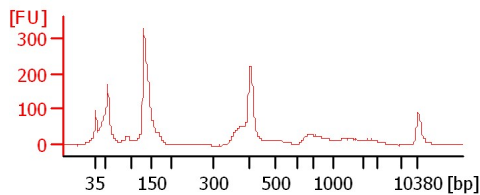
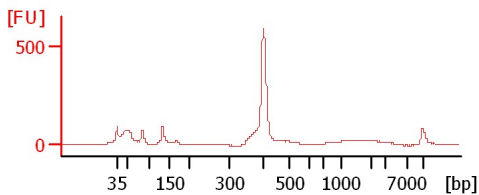
Field 1 Endo-2



Field 1 1mm-3

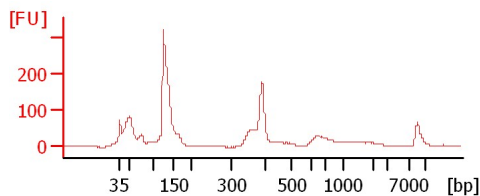
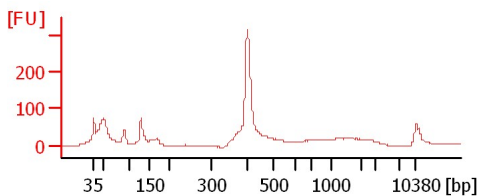
Field 1 BF-3

Field 1 Endo-3



Field 1 1mm-4

Field BF-4



Assay Class: High Sensitivity DNA Assay
Data Path: C:\...ents and Settings\UC Davis\Desktop\2013-10-16_004_fixed.xad

Created: 10/16/2013 1:27:32 PM
Modified: 10/16/2013 2:48:15 PM

Electrophoresis File Run Summary (Chip Summary)

Sample Name	Sample Comment	Rest. Digest	Status	Observation	Result Label	Result Color
Field 1 1mm-1		<input type="checkbox"/>	✓			
Field 1 BF-1		<input type="checkbox"/>	✓			
Field 1 Endo-1		<input type="checkbox"/>	✓			
Field 1 1mm-2		<input type="checkbox"/>	✓			
Field 1 BF-2		<input type="checkbox"/>	✓			
Field 1 Endo-2		<input type="checkbox"/>	✓			
Field 1 1mm-3		<input type="checkbox"/>	✓			
Field 1 BF-3		<input type="checkbox"/>	✓			
Field 1 Endo-3		<input type="checkbox"/>	✓			
Field 1 1mm-4		<input type="checkbox"/>	✓			
Field BF-4		<input type="checkbox"/>	✓			
Ladder		<input type="checkbox"/>	✓			

Chip Lot #

Reagent Kit Lot #

Chip Comments :

Assay Class: High Sensitivity DNA Assay
Data Path: C:\...ents and Settings\UC Davis\Desktop\2013-10-16_004_fixed.xad

Created: 10/16/2013 1:27:32 PM
Modified: 10/16/2013 2:48:15 PM

Electrophoresis Assay Details

General Analysis Settings

Number of Available Sample and Ladder Wells (Max.) : 12
Minimum Visible Range [s] : 32
Maximum Visible Range [s] : 138
Start Analysis Time Range [s] : 33
End Analysis Time Range [s] : 137.5
Ladder Concentration [pg/μl] : 1950
Uses Standard Area for Ladder Fragments
Lower Marker Concentration [pg/μl] : 125
Upper Marker Concentration [pg/μl] : 75
Used Upper Marker for Quantitation
Standard Curve Fit is Point to Point
Show Data Aligned to Lower and Upper Marker

Integrator Settings

Integration Start Time [s] : 33.05
Integration End Time [s] : 137
Slope Threshold : 0.8
Height Threshold [FU] : 5
Area Threshold : 0.1
Width Threshold [s] : 0.6
Baseline Plateau [s] : 0.5

Filter Settings

Filter Width [s] : 0.5
Polynomial Order : 4

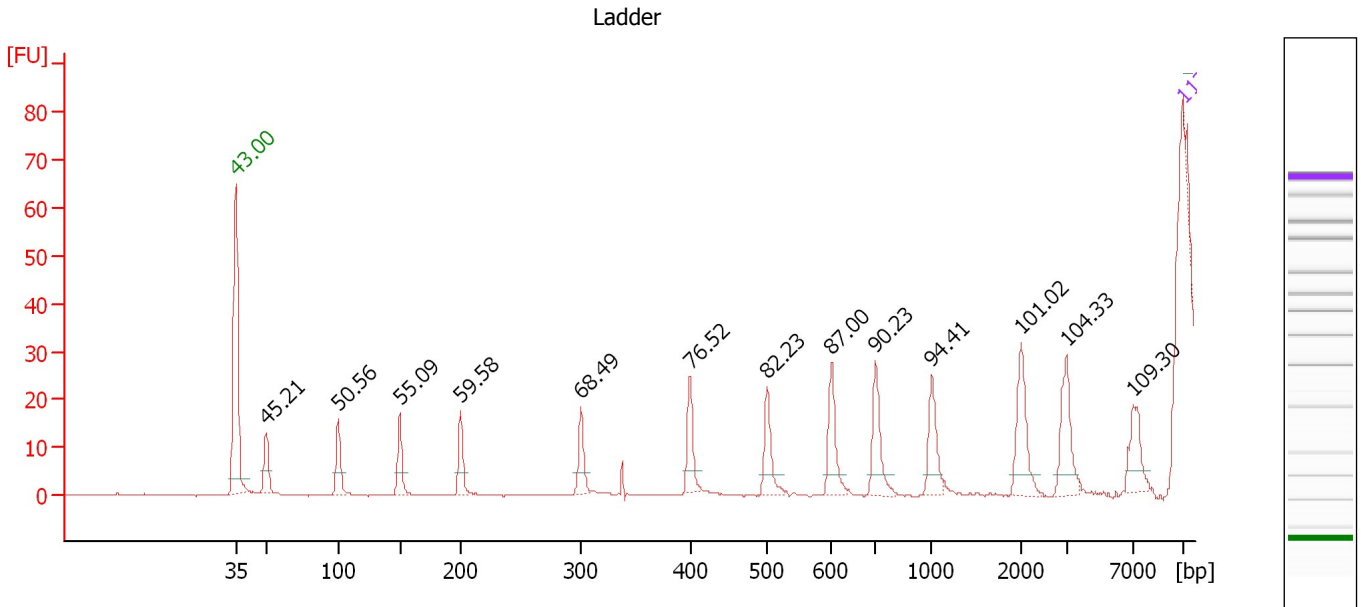
Ladder

Ladder Peak	Size	Area
1	35	160
2	50	210
3	100	208
4	150	221
5	200	242
6	300	270
7	400	305
8	500	306
9	600	336
10	700	321
11	1000	366
12	2000	413
13	3000	411
14	7000	400
15	10380	214

Assay Class: High Sensitivity DNA Assay
 Data Path: C:\...ents and Settings\UC Davis\Desktop\2013-10-16_004_fixed.xad

Created: 10/16/2013 1:27:32 PM
 Modified: 10/16/2013 2:48:15 PM

Electropherogram Summary



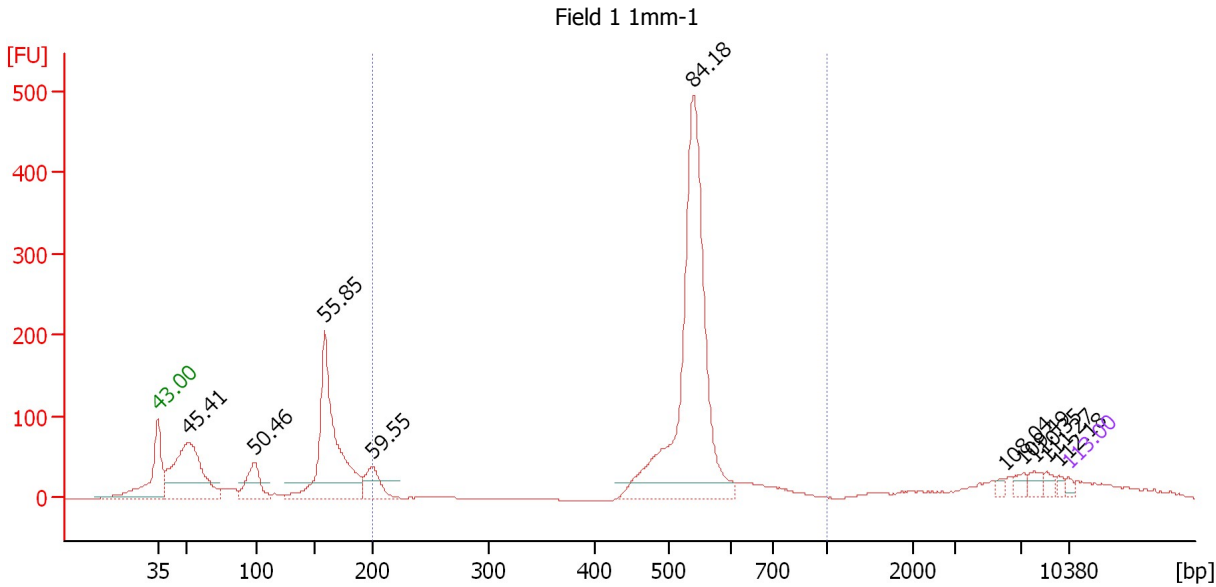
Peak table for Ladder

Peak	Size [bp]	Conc. [pg/μl]	Molarity [pmol/l]	Observations
1	35	125.00	5,411.3	Lower Marker
2	50	150.00	4,545.5	Ladder Peak
3	100	150.00	2,272.7	Ladder Peak
4	150	150.00	1,515.2	Ladder Peak
5	200	150.00	1,136.4	Ladder Peak
6	300	150.00	757.6	Ladder Peak
7	400	150.00	568.2	Ladder Peak
8	500	150.00	454.5	Ladder Peak
9	600	150.00	378.8	Ladder Peak
10	700	150.00	324.7	Ladder Peak
11	1,000	150.00	227.3	Ladder Peak
12	2,000	150.00	113.6	Ladder Peak
13	3,000	150.00	75.8	Ladder Peak
14	7,000	150.00	32.5	Ladder Peak
15	10,380	75.00	10.9	Upper Marker

Assay Class: High Sensitivity DNA Assay
 Data Path: C:\...ents and Settings\UC Davis\Desktop\2013-10-16_004_fixed.xad

Created: 10/16/2013 1:27:32 PM
 Modified: 10/16/2013 2:48:15 PM

Electropherogram Summary Continued ...



Setpoint Deviations for sample 1 : Field 1 1mm-1

Height Threshold [FU] : 20

Overall Results for sample 1 : Field 1 1mm-1

Number of peaks found: 10 Corr. Area 1: 1,218.9
 Noise: 0.2

Peak table for sample 1 : Field 1 1mm-1

Peak	Size [bp]	Conc. [pg/μl]	Molarity [pmol/l]	Observations
1	35	125.00	5,411.3	Lower Marker
2	52	4,031.32	117,774.5	
3	99	1,112.06	17,018.2	
4	158	5,182.41	49,580.2	
5	200	772.87	5,866.3	
6	541	8,716.14	24,417.3	
7	5,991	84.44	21.4	
8	7,174	161.11	34.0	
9	7,965	184.81	35.2	
10	8,799	136.28	23.5	
11	9,633	81.05	12.7	
12	10,380	75.00	10.9	Upper Marker

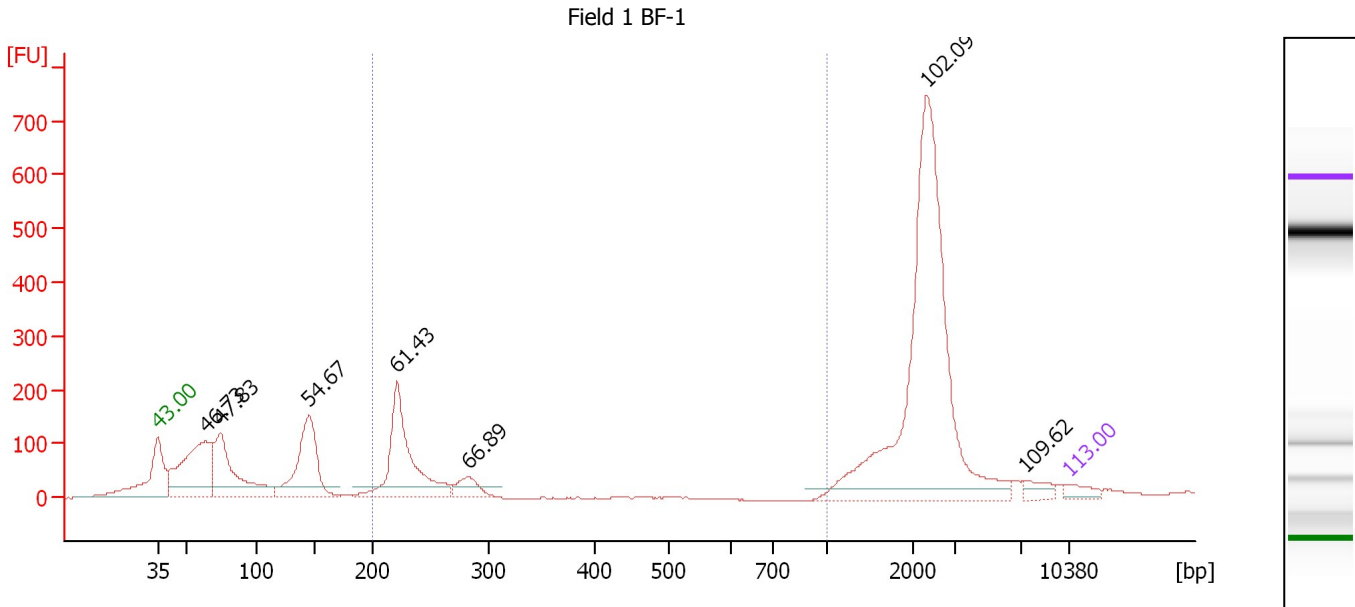
Region table for sample 1 : Field 1 1mm-1

From [bp]	To [bp]	Average Size [bp]	Molarity [pmol/l]	Conc. [pg/μl]	Corr. Area	% of Total	Size distribution in CV [%]	Color
200	1,000	535	27,439.7	9,202.69	1,218.9	50	12.4	Blue

Assay Class: High Sensitivity DNA Assay
 Data Path: C:\...ents and Settings\UC Davis\Desktop\2013-10-16_004_fixed.xad

Created: 10/16/2013 1:27:32 PM
 Modified: 10/16/2013 2:48:15 PM

Electropherogram Summary Continued ...



Setpoint Deviations for sample 2 : Field 1 BF-1

Height Threshold [FU] : 20

Overall Results for sample 2 : Field 1 BF-1

Number of peaks found: 7 Corr. Area 1: 526.4
 Noise: 0.5

Peak table for sample 2 : Field 1 BF-1

Peak	Size [bp]	Conc. [pg/μl]	Molarity [pmol/l]	Observations
1	35	125.00	5,411.3	Lower Marker
2	64	1,161.60	27,412.9	
3	75	925.00	18,809.2	
4	145	964.20	10,055.1	
5	221	1,184.09	8,126.9	
6	282	198.69	1,067.5	
7	2,323	2,930.38	1,911.5	
8	7,292	88.31	18.3	
9	10,380	75.00	10.9	Upper Marker

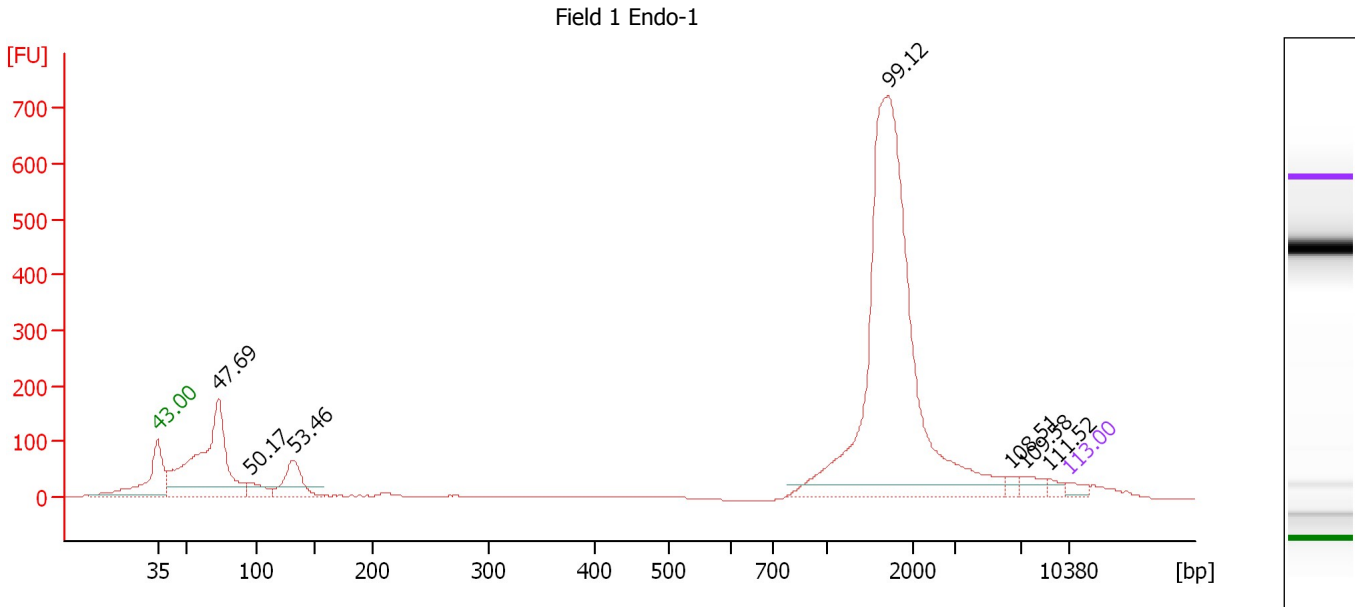
Region table for sample 2 : Field 1 BF-1

From [bp]	To [bp]	Average Size [bp]	Molarity [pmol/l]	Conc. [pg/μl]	Corr. Area	% of Total	Size distribution in CV [%]	Color
200	1,000	241	8,355.3	1,308.96	526.4	14	23.3	Blue

Assay Class: High Sensitivity DNA Assay
 Data Path: C:\...ents and Settings\UC Davis\Desktop\2013-10-16_004_fixed.xad

Created: 10/16/2013 1:27:32 PM
 Modified: 10/16/2013 2:48:15 PM

Electropherogram Summary Continued ...



Setpoint Deviations for sample 3 : Field 1 Endo-1

Height Threshold [FU] : 20

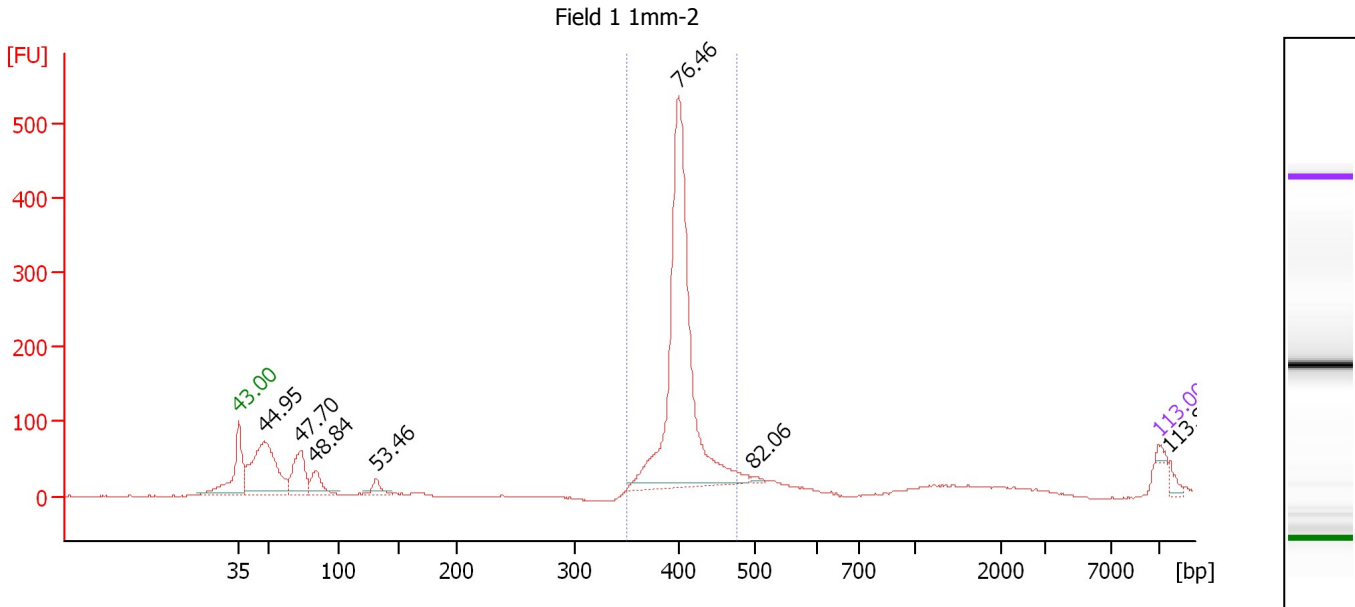
Peak table for sample 3 : Field 1 Endo-1

Peak	Size [bp]	Conc. [pg/μl]	Molarity [pmol/l]	Observations
1	35	125.00	5,411.3	Lower Marker
2	73	3,082.00	63,779.7	
3	96	286.90	4,510.7	
4	132	694.47	7,973.3	
5	1,712	6,166.45	5,456.5	
6	6,364	70.15	16.7	
7	7,259	139.64	29.1	
8	9,034	68.86	11.5	
9	10,380	75.00	10.9	Upper Marker

Assay Class: High Sensitivity DNA Assay
 Data Path: C:\...ents and Settings\UC Davis\Desktop\2013-10-16_004_fixed.xad

Created: 10/16/2013 1:27:32 PM
 Modified: 10/16/2013 2:48:15 PM

Electropherogram Summary Continued ...



Peak table for sample 4 : Field 1 1mm-2

Peak	Size [bp]	Conc. [pg/μl]	Molarity [pmol/l]	Observations
1	35	125.00	5,411.3	Lower Marker
2	48	3,748.58	117,744.9	
3	73	1,451.63	29,998.3	
4	84	661.42	11,942.2	
5	132	290.44	3,333.6	
6	399	8,770.32	33,287.1	
7	497	71.79	218.9	
8	10,380	75.00	10.9	Upper Marker
9	11,120	0.00	0.0	

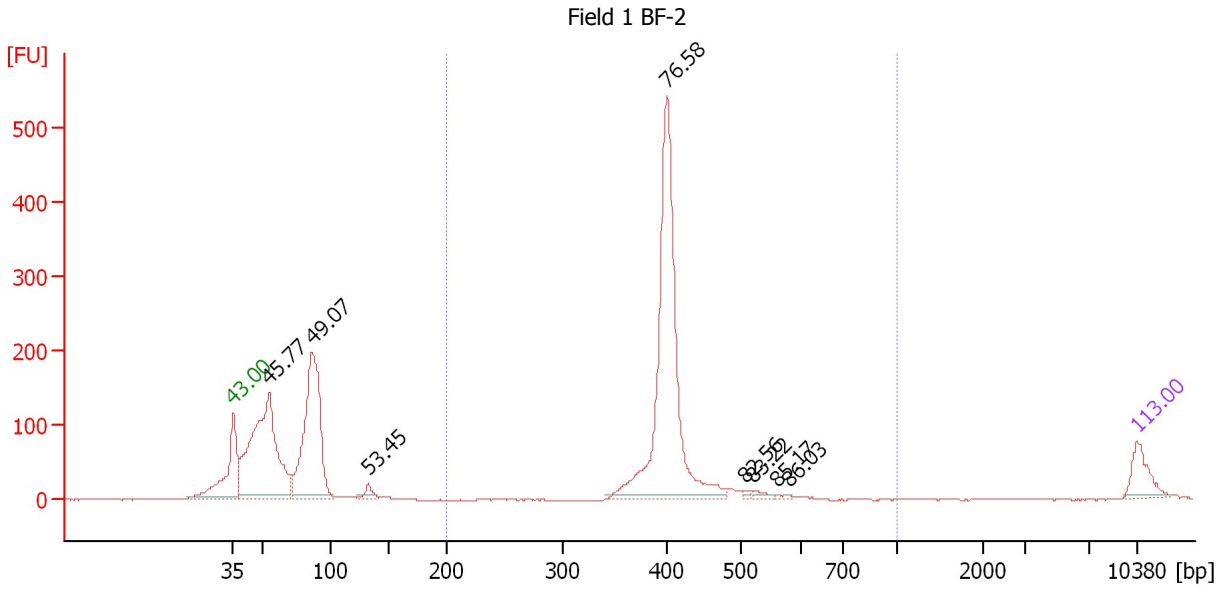
Region table for sample 4 : Field 1 1mm-2

From [bp]	To [bp]	Average Size [bp]	Molarity [pmol/l]	Conc. [pg/μl]	Corr. Area	% of Total	Size distribution in CV [%]	Color
349	476	404	34,136.3	9,092.75	1,317.4	64	5.0	Blue

Assay Class: High Sensitivity DNA Assay
 Data Path: C:\...ents and Settings\UC Davis\Desktop\2013-10-16_004_fixed.xad

Created: 10/16/2013 1:27:32 PM
 Modified: 10/16/2013 2:48:15 PM

Electropherogram Summary Continued ...



Peak table for sample 5 : Field 1 BF-2

Peak	Size [bp]	Conc. [pg/μl]	Molarity [pmol/l]	Observations
1	35	125.00	5,411.3	Lower Marker
2	55	1,117.84	30,662.9	
3	86	946.12	16,655.1	
4	132	42.72	490.9	
5	401	1,193.71	4,511.3	
6	507	11.16	33.4	
7	521	18.92	55.0	
8	561	3.62	9.8	
9	580	4.42	11.6	
10	10,380	75.00	10.9	Upper Marker

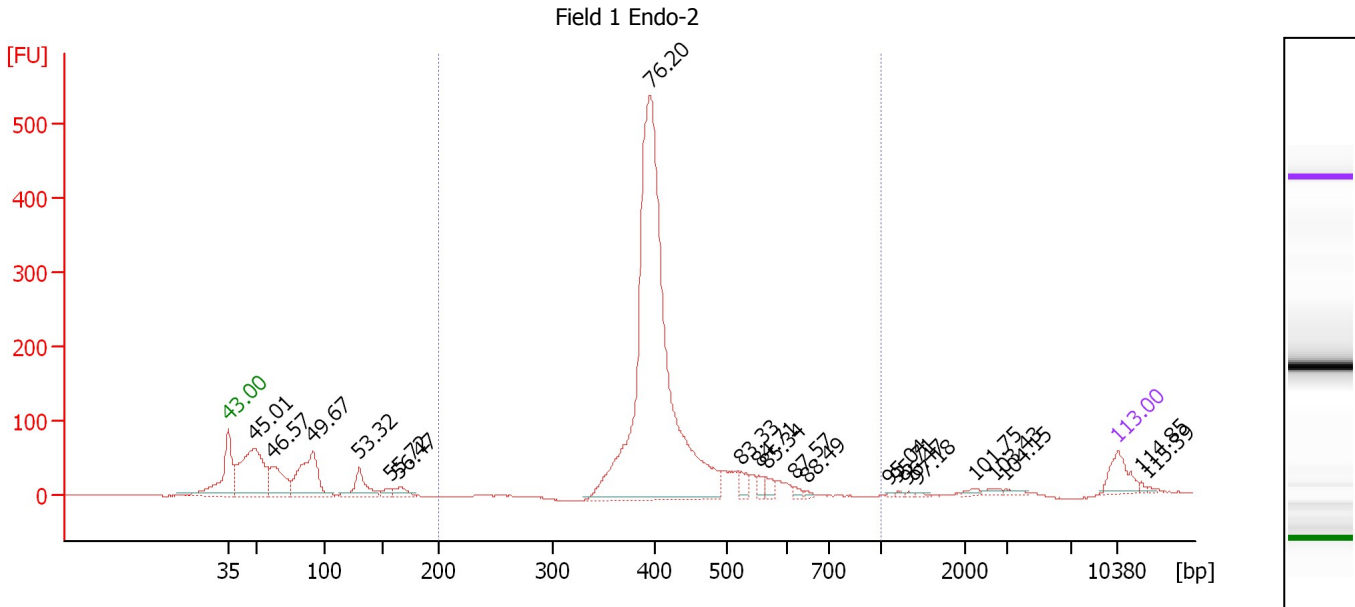
Region table for sample 5 : Field 1 BF-2

From [bp]	To [bp]	Average Size [bp]	Molarity [pmol/l]	Conc. [pg/μl]	Corr. Area	% of Total	Size distribution in CV [%]	Color
200	1,000	410	4,623.3	1,242.97	1,213.5	45	8.2	Blue

Assay Class: High Sensitivity DNA Assay
 Data Path: C:\...ents and Settings\UC Davis\Desktop\2013-10-16_004_fixed.xad

Created: 10/16/2013 1:27:32 PM
 Modified: 10/16/2013 2:48:15 PM

Electropherogram Summary Continued ...



Peak table for sample 6 : Field 1 Endo-2

Peak	Size [bp]	Conc. [pg/μl]	Molarity [pmol/l]	Observations
1	35	125.00	5,411.3	Lower Marker
2	49	566.05	17,611.8	
3	63	208.61	5,040.9	
4	92	368.30	6,086.2	
5	130	130.89	1,520.1	
6	157	24.92	240.6	
7	165	40.91	374.8	
8	396	2,356.24	9,017.0	
9	523	43.56	126.2	
10	552	29.10	79.9	
11	565	28.09	75.3	
12	618	11.53	28.3	
13	646	6.27	14.7	
14	1,095	3.69	5.1	
15	1,197	4.55	5.8	
16	1,311	4.70	5.4	
17	1,419	4.35	4.6	
18	2,220	10.11	6.9	
19	2,727	11.79	6.6	
20	2,943	10.95	5.6	
21	10,380	75.00	10.9	Upper Marker
22	12,066	0.00	0.0	
23	12,564	0.00	0.0	

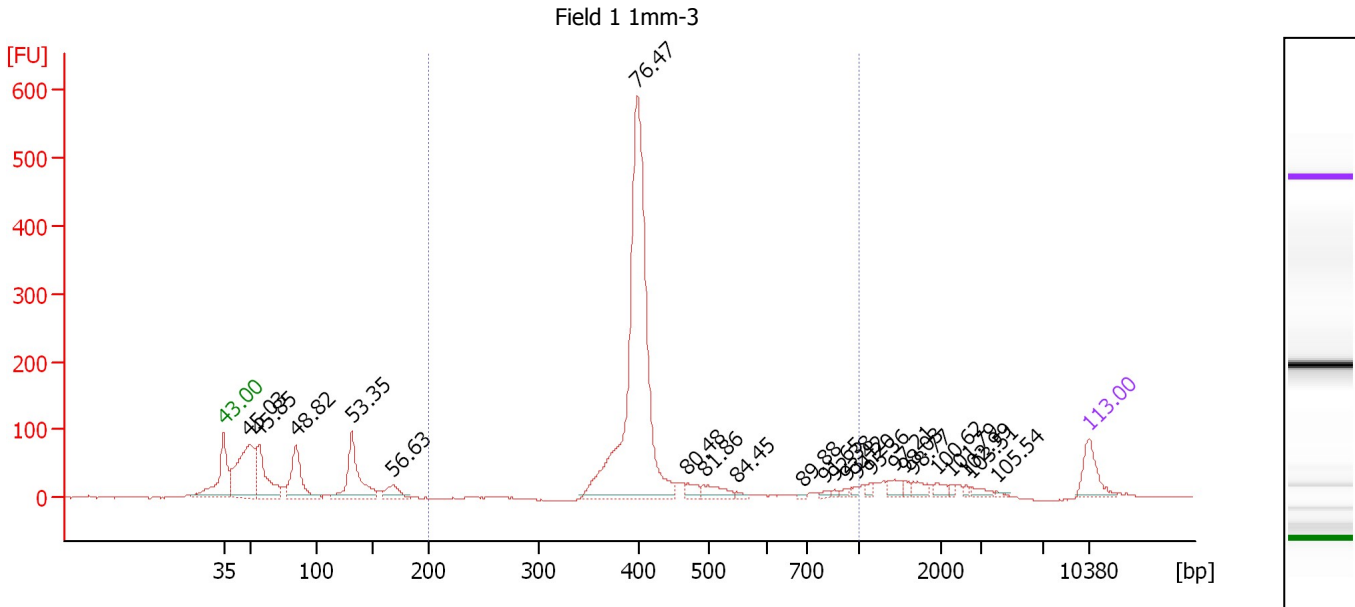
Region table for sample 6 : Field 1 Endo-2

From [bp]	To [bp]	Average Size [bp]	Molarity [pmol/l]	Conc. [pg/μl]	Corr. Area	% of Total	Size distribution in CV [%]	Color
200	1,000	417	8,907.6	2,419.61	2,033.9	72	11.8	Blue

Assay Class: High Sensitivity DNA Assay
 Data Path: C:\...ents and Settings\UC Davis\Desktop\2013-10-16_004_fixed.xad

Created: 10/16/2013 1:27:32 PM
 Modified: 10/16/2013 2:48:15 PM

Electropherogram Summary Continued ...



Peak table for sample 7 : Field 1 1mm-3

Peak	Size [bp]	Conc. [pg/μl]	Molarity [pmol/l]	Observations
1	35	125.00	5,411.3	Lower Marker
2	49	474.12	14,725.3	
3	56	267.80	7,248.5	
4	84	245.51	4,441.3	
5	131	288.21	3,339.3	
6	167	68.16	618.0	
7	399	1,442.87	5,474.6	
8	469	32.35	104.5	
9	493	54.18	166.4	
10	546	10.66	29.6	
11	689	4.55	10.0	
12	802	9.31	17.6	
13	855	6.46	11.5	
14	929	10.65	17.4	
15	985	8.98	13.8	
16	1,144	13.02	17.2	
17	1,424	28.31	30.1	
18	1,548	13.94	13.6	
19	1,659	24.83	22.7	
20	1,939	18.36	14.3	
21	2,230	8.46	5.7	
22	2,595	7.10	4.1	
23	2,751	16.77	9.2	
24	3,971	5.75	2.2	
25	10,380	75.00	10.9	Upper Marker

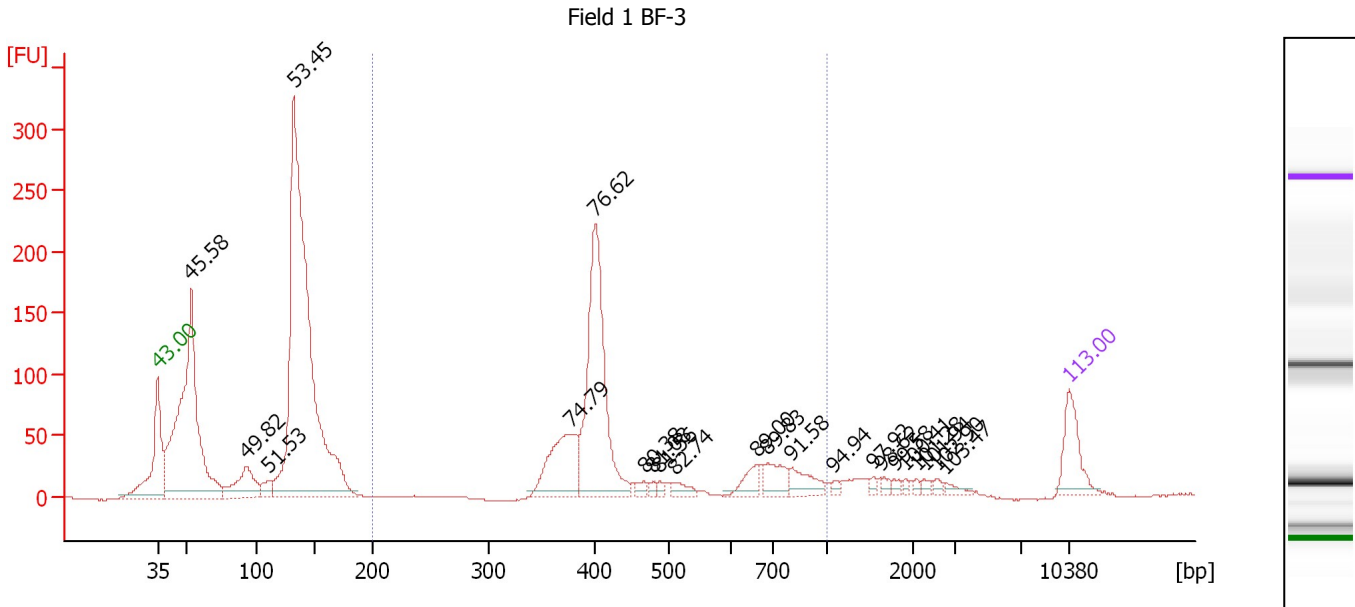
Region table for sample 7 : Field 1 1mm-3

From [bp]	To [bp]	Average Size [bp]	Molarity [pmol/l]	Conc. [pg/μl]	Corr. Area	% of Total	Size distribution in CV [%]	Color
200	1,000	422	5,781.1	1,561.33	1,475.5	58	21.5	Blue

Assay Class: High Sensitivity DNA Assay
 Data Path: C:\...ents and Settings\UC Davis\Desktop\2013-10-16_004_fixed.xad

Created: 10/16/2013 1:27:32 PM
 Modified: 10/16/2013 2:48:15 PM

Electropherogram Summary Continued ...



Peak table for sample 8 : Field 1 BF-3

Peak	Size [bp]	Conc. [pg/μl]	Molarity [pmol/l]	Observations
1	35	125.00	5,411.3	Lower Marker
2	53	902.00	25,551.0	
3	93	134.62	2,191.5	
4	111	34.09	467.0	
5	132	1,562.35	17,952.6	
6	378	191.29	766.0	
7	402	472.78	1,783.0	
8	468	13.05	42.3	
9	480	9.50	30.0	
10	488	8.67	26.9	
11	511	21.83	64.8	
12	662	36.50	83.6	
13	687	52.20	115.0	
14	797	48.52	92.3	
15	1,081	7.49	10.5	
16	1,530	7.32	7.2	
17	1,636	8.78	8.1	
18	1,781	7.53	6.4	
19	1,907	5.62	4.5	
20	2,078	5.74	4.2	
21	2,276	7.83	5.2	
22	2,567	7.59	4.5	
23	2,739	10.31	5.7	
24	10,380	75.00	10.9	Upper Marker

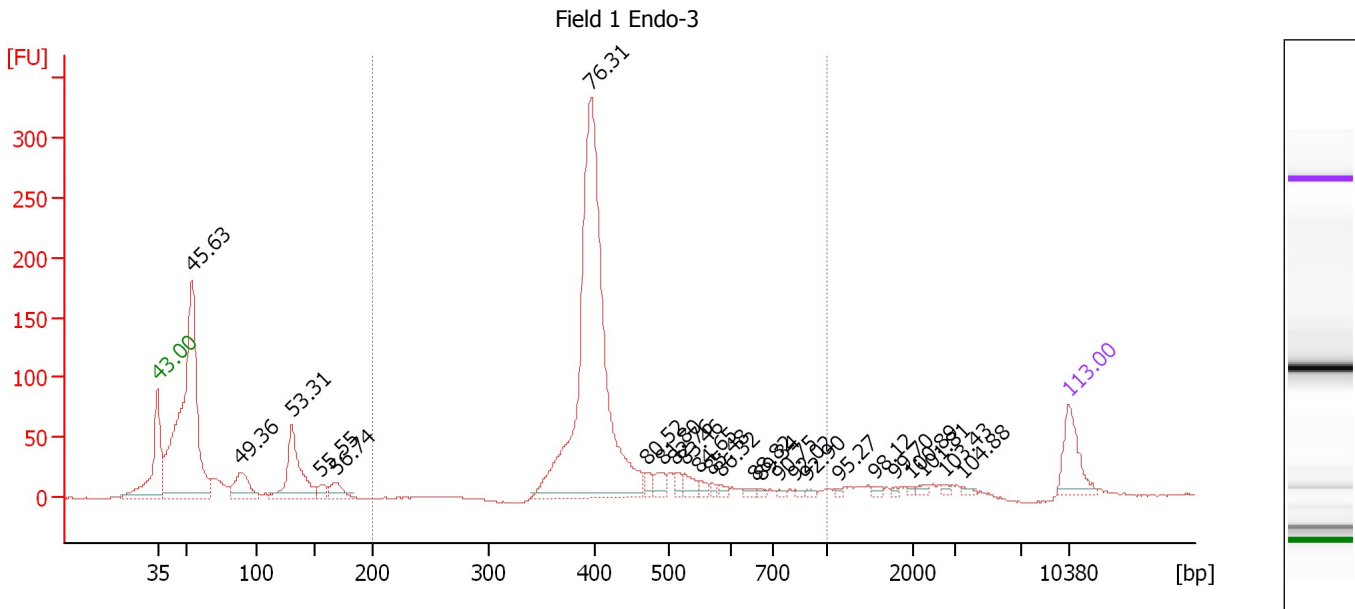
Region table for sample 8 : Field 1 BF-3

From [bp]	To [bp]	Average Size [bp]	Molarity [pmol/l]	Conc. [pg/μl]	Corr. Area	% of Total	Size distribution in CV [%]	Color
200	1,000	477	2,976.9	853.87	828.1	31	32.0	Blue

Assay Class: High Sensitivity DNA Assay
 Data Path: C:\...ents and Settings\UC Davis\Desktop\2013-10-16_004_fixed.xad

Created: 10/16/2013 1:27:32 PM
 Modified: 10/16/2013 2:48:15 PM

Electropherogram Summary Continued ...



Peak table for sample 9 : Field 1 Endo-3

Peak	Size [bp]	Conc. [pg/μl]	Molarity [pmol/l]	Observations
1	35	125.00	5,411.3	Lower Marker
2	54	1,003.84	28,172.5	
3	89	106.62	1,819.1	
4	130	231.44	2,690.1	
5	155	24.84	242.7	
6	168	43.69	393.3	
7	397	1,157.66	4,414.2	
8	470	18.54	59.8	
9	492	31.25	96.2	
10	511	19.16	56.8	
11	526	26.33	75.9	
12	551	14.17	39.0	
13	568	8.23	22.0	
14	586	9.37	24.2	
15	656	9.78	22.6	
16	673	5.40	12.2	
17	737	4.77	9.8	
18	829	4.61	8.4	
19	892	5.31	9.0	
20	1,130	3.80	5.1	
21	1,561	6.35	6.2	
22	1,800	3.60	3.0	
23	1,979	4.19	3.2	
24	2,237	8.38	5.7	
25	2,728	4.98	2.8	
26	3,441	5.90	2.6	
27	10,380	75.00	10.9	Upper Marker

Assay Class: High Sensitivity DNA Assay
Data Path: C:\...ents and Settings\UC Davis\Desktop\2013-10-16_004_fixed.xad

Created: 10/16/2013 1:27:32 PM
Modified: 10/16/2013 2:48:15 PM

Electropherogram Summary Continued ...

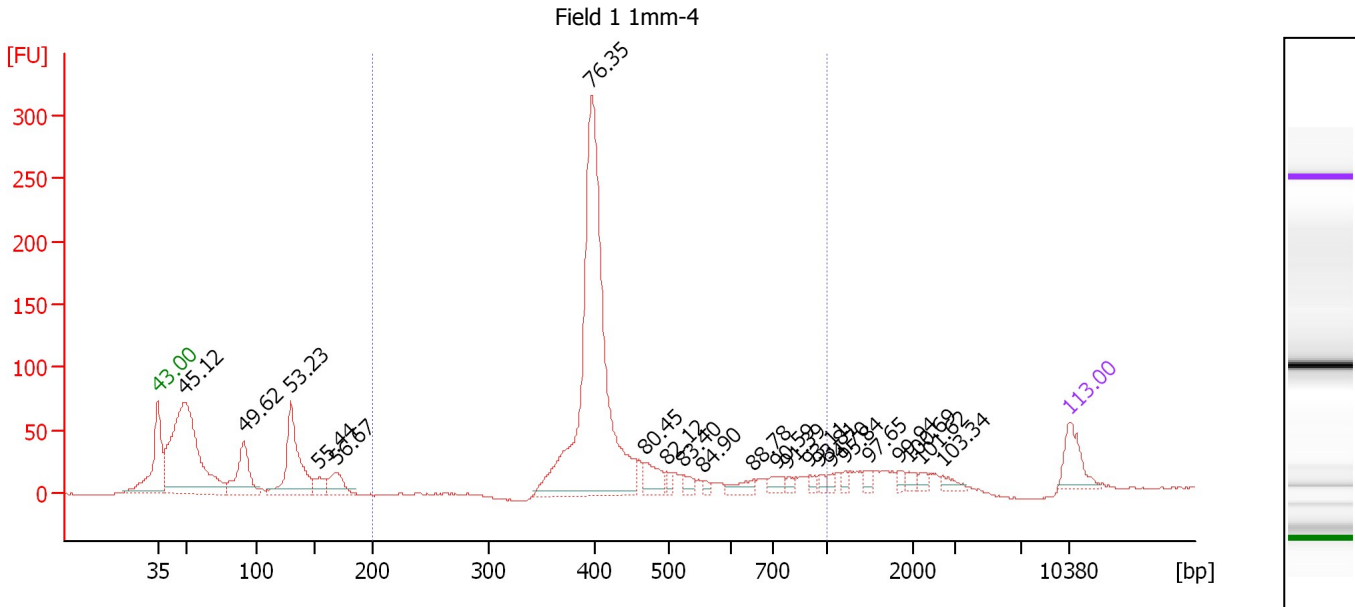
... Region table for sample 9 : Field 1 Endo-3

From [bp]	To [bp]	Average Size [bp]	Molarity [pmol/l]	Conc. [pg/μl]	Corr. Area	% of Total	Size distribution in CV [%]	Color
200	1,000	429	4,807.7	1,319.46	1,115.3	54	19.5	■

Assay Class: High Sensitivity DNA Assay
 Data Path: C:\...ents and Settings\UC Davis\Desktop\2013-10-16_004_fixed.xad

Created: 10/16/2013 1:27:32 PM
 Modified: 10/16/2013 2:48:15 PM

Electropherogram Summary Continued ...



Peak table for sample 10 : Field 1 1mm-4

Peak	Size [bp]	Conc. [pg/μl]	Molarity [pmol/l]	Observations
1	35	125.00	5,411.3	Lower Marker
2	49	881.58	27,041.0	
3	91	201.52	3,349.4	
4	129	323.08	3,781.0	
5	154	46.24	455.4	
6	168	81.98	741.2	
7	398	1,244.03	4,738.3	
8	469	71.14	229.9	
9	498	18.74	57.0	
10	525	25.83	74.6	
11	556	10.27	28.0	
12	655	31.67	73.2	
13	726	28.53	59.6	
14	783	14.20	27.5	
15	907	13.45	22.5	
16	957	10.96	17.3	
17	1,044	11.21	16.3	
18	1,217	13.06	16.3	
19	1,490	14.61	14.9	
20	1,837	13.64	11.3	
21	1,950	15.57	12.1	
22	2,180	12.61	8.8	
23	2,700	18.34	10.3	
24	10,380	75.00	10.9	Upper Marker

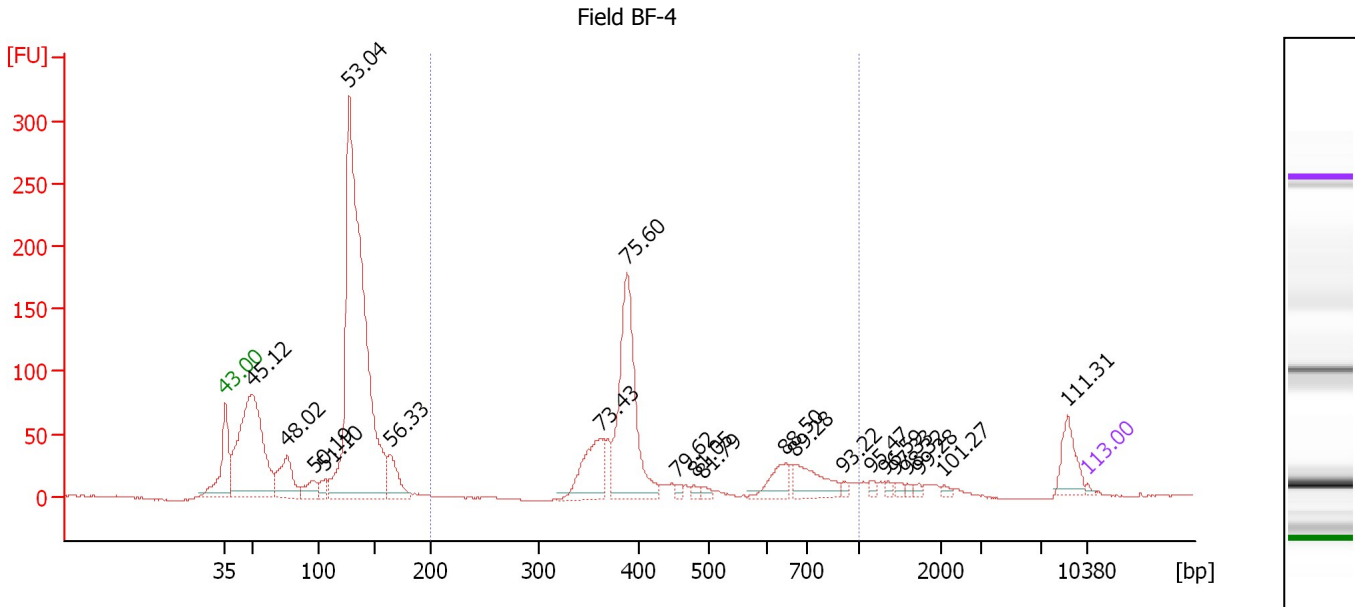
Region table for sample 10 : Field 1 1mm-4

From [bp]	To [bp]	Average Size [bp]	Molarity [pmol/l]	Conc. [pg/μl]	Corr. Area	% of Total	Size distribution in CV [%]	Color
200	1,000	446	5,054.7	1,412.84	956.1	54	25.9	Blue

Assay Class: High Sensitivity DNA Assay
 Data Path: C:\...ents and Settings\UC Davis\Desktop\2013-10-16_004_fixed.xad

Created: 10/16/2013 1:27:32 PM
 Modified: 10/16/2013 2:48:15 PM

Electropherogram Summary Continued ...



Peak table for sample 11 : Field BF-4

Peak	Size [bp]	Conc. [pg/μl]	Molarity [pmol/l]	Observations
1	35	125.00	5,411.3	Lower Marker
2	49	14,357.49	440,148.1	
3	76	3,186.23	63,289.2	
4	96	1,141.25	17,922.6	
5	106	644.57	9,224.6	
6	127	33,547.27	399,059.9	
7	164	2,086.07	19,295.5	
8	362	3,229.24	13,532.8	
9	388	8,486.52	33,098.8	
10	454	200.93	670.2	
11	479	210.13	664.3	
12	492	273.37	841.5	
13	646	1,194.79	2,800.8	
14	670	1,730.84	3,911.5	
15	914	167.58	277.7	
16	1,160	188.78	246.5	
17	1,330	138.16	157.4	
18	1,442	179.75	188.9	
19	1,592	132.40	126.0	
20	1,736	121.59	106.1	
21	2,074	124.68	91.1	
22	8,839	1,265.99	217.0	
23	10,380	75.00	10.9	Upper Marker

Region table for sample 11 : Field BF-4

From [bp]	To [bp]	Average Size [bp]	Molarity [pmol/l]	Conc. [pg/μl]	Corr. Area	% of Total	Size distribution in CV [%]	Color
200	1,000	467	56,241.2	15,667.30	693.4	28	33.0	Blue

Assay Class: High Sensitivity DNA Assay
Data Path: C:\...ents and Settings\UC Davis\Desktop\2013-10-16_004_fixed.xad

Created: 10/16/2013 1:27:32 PM
Modified: 10/16/2013 2:48:15 PM

Gel Image

