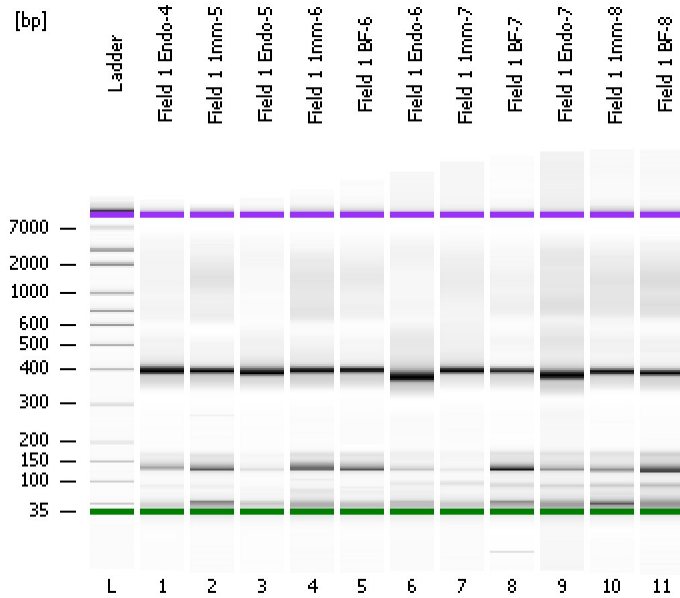


Assay Class: High Sensitivity DNA Assay  
Data Path: C:\...ents and Settings\Bioanalyzer\2013-10-16\2013-10-16\_005.xad

Created: 10/16/2013 2:13:57 PM  
Modified: 10/16/2013 3:00:09 PM

### Electrophoresis File Run Summary



#### Instrument Information:

Instrument Name: DE13701086      Firmware: C.01.069  
Serial#: DE13701086      Type: G2938B

#### Assay Information:

Assay Origin Path: C:\Program Files\Agilent\2100 bioanalyzer\2100 expert\assays\dsDNA\High Sensitivity DNA.xsy  
Assay Class: High Sensitivity DNA Assay  
Version: 1.03  
Assay Comments: Copyright © 2003-2010 Agilent Technologies

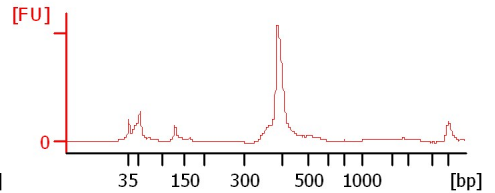
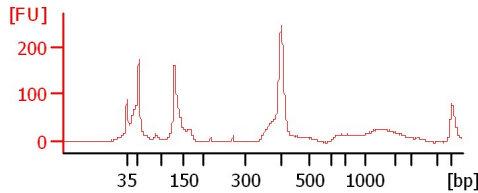
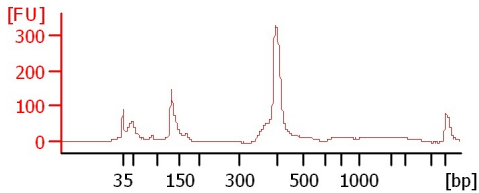
#### Chip Information:

Chip Lot #:   
Reagent Kit Lot #:   
Chip Comments:

Field 1 Endo-4

Field 1 1mm-5

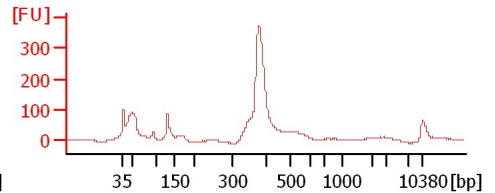
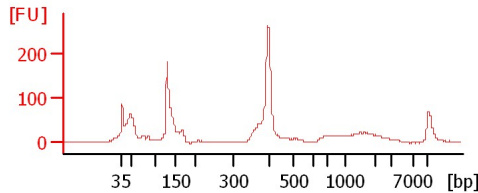
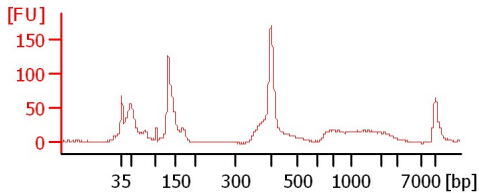
Field 1 Endo-5



Field 1 1mm-6

Field 1 BF-6

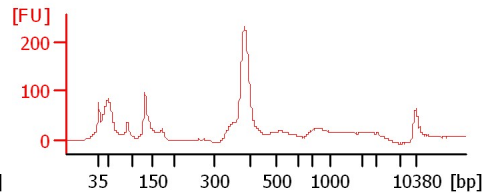
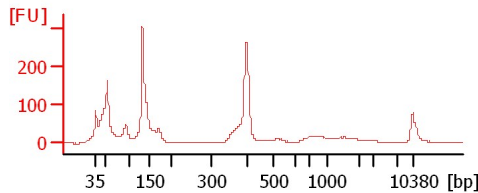
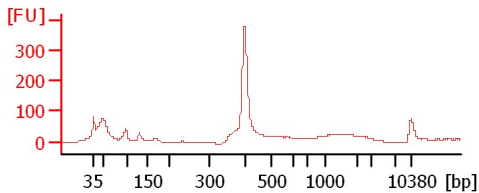
Field 1 Endo-6



Field 1 1mm-7

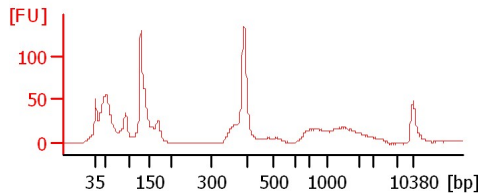
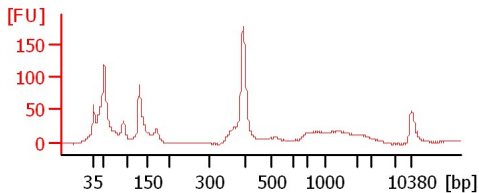
Field 1 BF-7

Field 1 Endo-7



Field 1 1mm-8

Field 1 BF-8



Assay Class: High Sensitivity DNA Assay  
 Data Path: C:\...ents and Settings\Bioanalyzer\2013-10-16\2013-10-16\_005.xad

Created: 10/16/2013 2:13:57 PM  
 Modified: 10/16/2013 3:00:09 PM

**Electrophoresis File Run Summary (Chip Summary)**

Sample Name	Sample Comment	Rest. Digest	Status	Observation	Result Label	Result Color
Field 1 Endo-4		<input type="checkbox"/>	✓			
Field 1 1mm-5		<input type="checkbox"/>	✓			
Field 1 Endo-5		<input type="checkbox"/>	✓			
Field 1 1mm-6		<input type="checkbox"/>	✓			
Field 1 BF-6		<input type="checkbox"/>	✓			
Field 1 Endo-6		<input type="checkbox"/>	✓			
Field 1 1mm-7		<input type="checkbox"/>	✓			
Field 1 BF-7		<input type="checkbox"/>	✓			
Field 1 Endo-7		<input type="checkbox"/>	✓			
Field 1 1mm-8		<input type="checkbox"/>	✓			
Field 1 BF-8		<input type="checkbox"/>	✓			
Ladder		<input type="checkbox"/>	✓			

**Chip Lot #**

**Reagent Kit Lot #**

**Chip Comments :**

Assay Class: High Sensitivity DNA Assay  
 Data Path: C:\...ents and Settings\Bioanalyzer\2013-10-16\2013-10-16\_005.xad

Created: 10/16/2013 2:13:57 PM  
 Modified: 10/16/2013 3:00:09 PM

**Electrophoresis Assay Details**

**General Analysis Settings**

Number of Available Sample and Ladder Wells (Max.) : 12  
 Minimum Visible Range [s] : 32  
 Maximum Visible Range [s] : 138  
 Start Analysis Time Range [s] : 33  
 End Analysis Time Range [s] : 137.5  
 Ladder Concentration [pg/μl] : 1950  
 Uses Standard Area for Ladder Fragments  
 Lower Marker Concentration [pg/μl] : 125  
 Upper Marker Concentration [pg/μl] : 75  
 Used Upper Marker for Quantitation  
 Standard Curve Fit is Point to Point  
 Show Data Aligned to Lower and Upper Marker

**Integrator Settings**

Integration Start Time [s] : 33.05  
 Integration End Time [s] : 137  
 Slope Threshold : 0.8  
 Height Threshold [FU] : 5  
 Area Threshold : 0.1  
 Width Threshold [s] : 0.6  
 Baseline Plateau [s] : 0.5

**Filter Settings**

Filter Width [s] : 0.5  
 Polynomial Order : 4

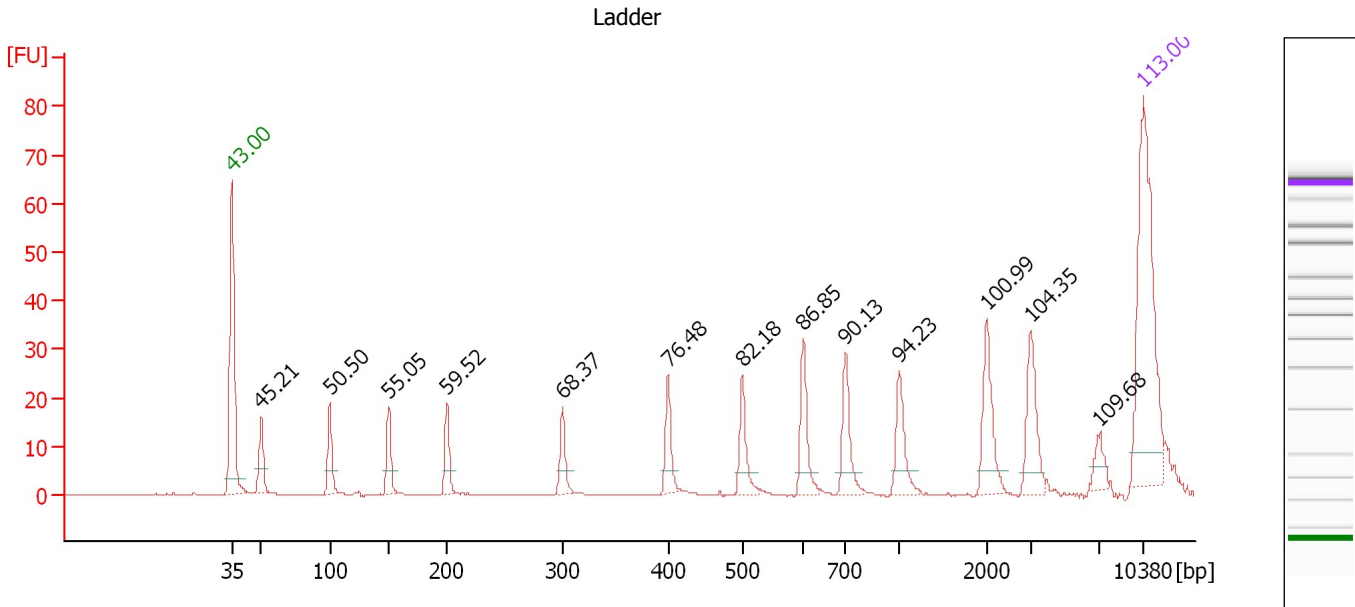
**Ladder**

Ladder Peak	Size	Area
1	35	160
2	50	210
3	100	208
4	150	221
5	200	242
6	300	270
7	400	305
8	500	306
9	600	336
10	700	321
11	1000	366
12	2000	413
13	3000	411
14	7000	400
15	10380	214

Assay Class: High Sensitivity DNA Assay  
 Data Path: C:\...ents and Settings\Bioanalyzer\2013-10-16\2013-10-16\_005.xad

Created: 10/16/2013 2:13:57 PM  
 Modified: 10/16/2013 3:00:09 PM

**Electropherogram Summary**



**Overall Results for Ladder**

Noise: 0.1

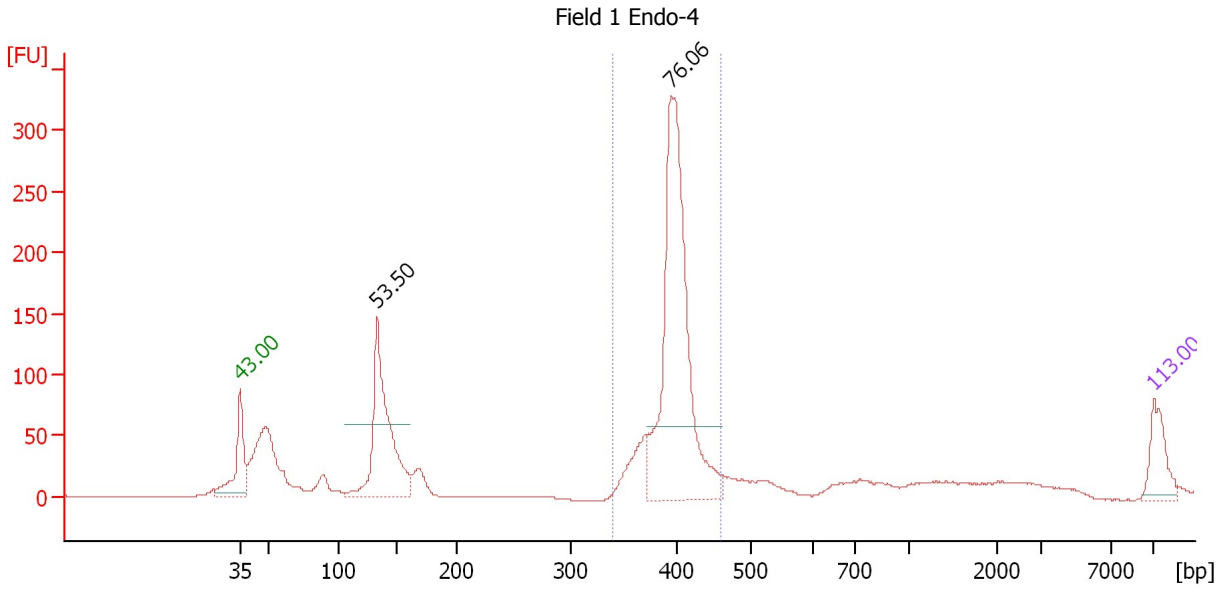
**Peak table for Ladder**

Peak	Size [bp]	Conc. [pg/μl]	Molarity [pmol/l]	Observations
1	35	125.00	5,411.3	Lower Marker
2	50	150.00	4,545.5	Ladder Peak
3	100	150.00	2,272.7	Ladder Peak
4	150	150.00	1,515.2	Ladder Peak
5	200	150.00	1,136.4	Ladder Peak
6	300	150.00	757.6	Ladder Peak
7	400	150.00	568.2	Ladder Peak
8	500	150.00	454.5	Ladder Peak
9	600	150.00	378.8	Ladder Peak
10	700	150.00	324.7	Ladder Peak
11	1,000	150.00	227.3	Ladder Peak
12	2,000	150.00	113.6	Ladder Peak
13	3,000	150.00	75.8	Ladder Peak
14	7,000	150.00	32.5	Ladder Peak
15	10,380	75.00	10.9	Upper Marker

Assay Class: High Sensitivity DNA Assay  
 Data Path: C:\...ents and Settings\Bioanalyzer\2013-10-16\2013-10-16\_005.xad

Created: 10/16/2013 2:13:57 PM  
 Modified: 10/16/2013 3:00:09 PM

**Electropherogram Summary Continued ...**



**Setpoint Deviations for sample 1 : Field 1 Endo-4**

Height Threshold [FU] : 60

**Overall Results for sample 1 : Field 1 Endo-4**

Number of peaks found: 2                      Corr. Area 1: 990.2  
 Noise: 0.1

**Peak table for sample 1 : Field 1 Endo-4**

Peak	Size [bp]	Conc. [pg/μl]	Molarity [pmol/l]	Observations
1	35	125.00	5,411.3	Lower Marker
2	133	582.17	6,632.4	
3	395	996.83	3,825.9	
4	10,380	75.00	10.9	Upper Marker

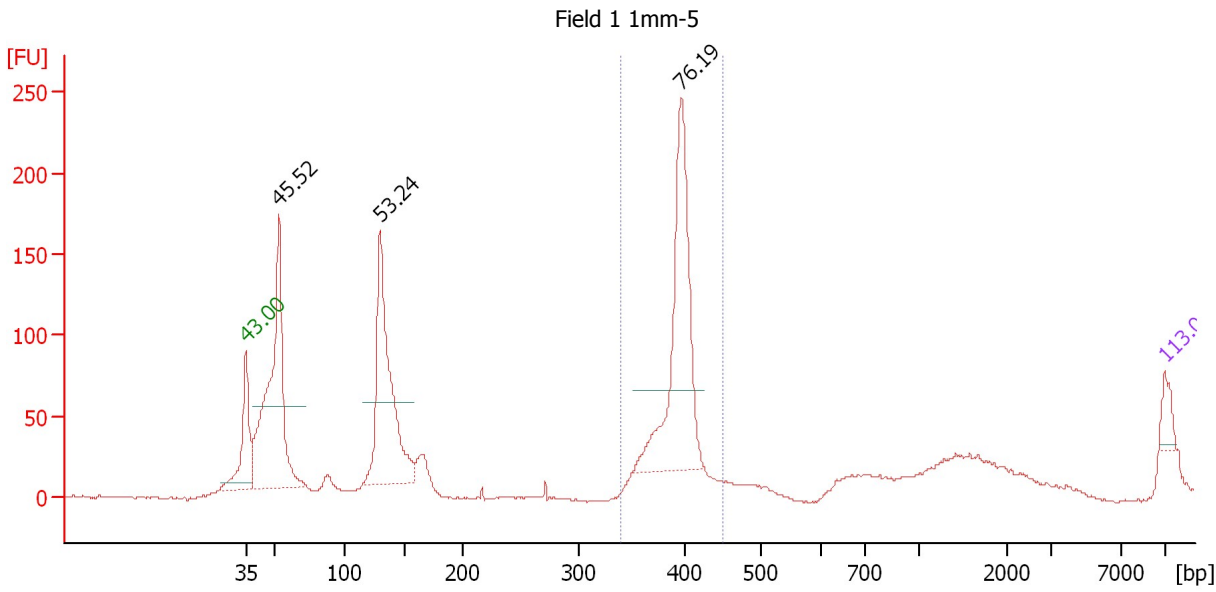
**Region table for sample 1 : Field 1 Endo-4**

From [bp]	To [bp]	Average Size [bp]	Molarity [pmol/l]	Conc. [pg/μl]	Corr. Area	% of Total	Size distribution in CV [%]	Color
340	459	397	4,003.7	1,048.32	990.2	51	4.7	Blue

Assay Class: High Sensitivity DNA Assay  
 Data Path: C:\...ents and Settings\Bioanalyzer\2013-10-16\2013-10-16\_005.xad

Created: 10/16/2013 2:13:57 PM  
 Modified: 10/16/2013 3:00:09 PM

**Electropherogram Summary Continued ...**



**Setpoint Deviations for sample 2 : Field 1 1mm-5**

Height Threshold [FU] : 50

**Overall Results for sample 2 : Field 1 1mm-5**

Number of peaks found: 3                      Corr. Area 1: 571.9  
 Noise: 0.7

**Peak table for sample 2 : Field 1 1mm-5**

Peak	Size [bp]	Conc. [pg/μl]	Molarity [pmol/l]	Observations
1	35	125.00	5,411.3	Lower Marker
2	53	1,947.72	55,795.0	
3	130	1,541.35	17,951.6	
4	396	1,404.58	5,368.6	
5	10,380	75.00	10.9	Upper Marker

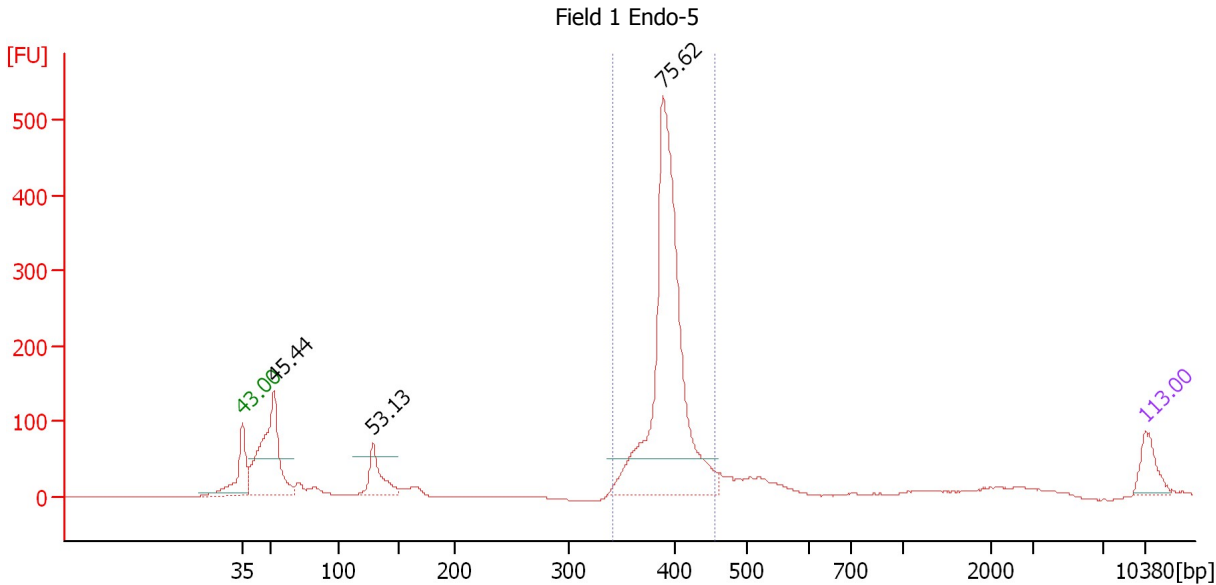
**Region table for sample 2 : Field 1 1mm-5**

From [bp]	To [bp]	Average Size [bp]	Molarity [pmol/l]	Conc. [pg/μl]	Corr. Area	% of Total	Size distribution in CV [%]	Color
341	450	393	6,656.5	1,726.30	571.9	33	4.0	Blue

Assay Class: High Sensitivity DNA Assay  
 Data Path: C:\...ents and Settings\Bioanalyzer\2013-10-16\2013-10-16\_005.xad

Created: 10/16/2013 2:13:57 PM  
 Modified: 10/16/2013 3:00:09 PM

**Electropherogram Summary Continued ...**



**Setpoint Deviations for sample 3 : Field 1 Endo-5**

Height Threshold [FU] : 50

**Overall Results for sample 3 : Field 1 Endo-5**

Number of peaks found: 3                      Corr. Area 1: 1,556.0  
 Noise: 0.5

**Peak table for sample 3 : Field 1 Endo-5**

Peak	Size [bp]	Conc. [pg/μl]	Molarity [pmol/l]	Observations
1	35	125.00	5,411.3	Lower Marker
2	52	678.57	19,718.5	
3	129	195.49	2,297.8	
4	389	1,567.77	6,100.3	
5	10,380	75.00	10.9	Upper Marker

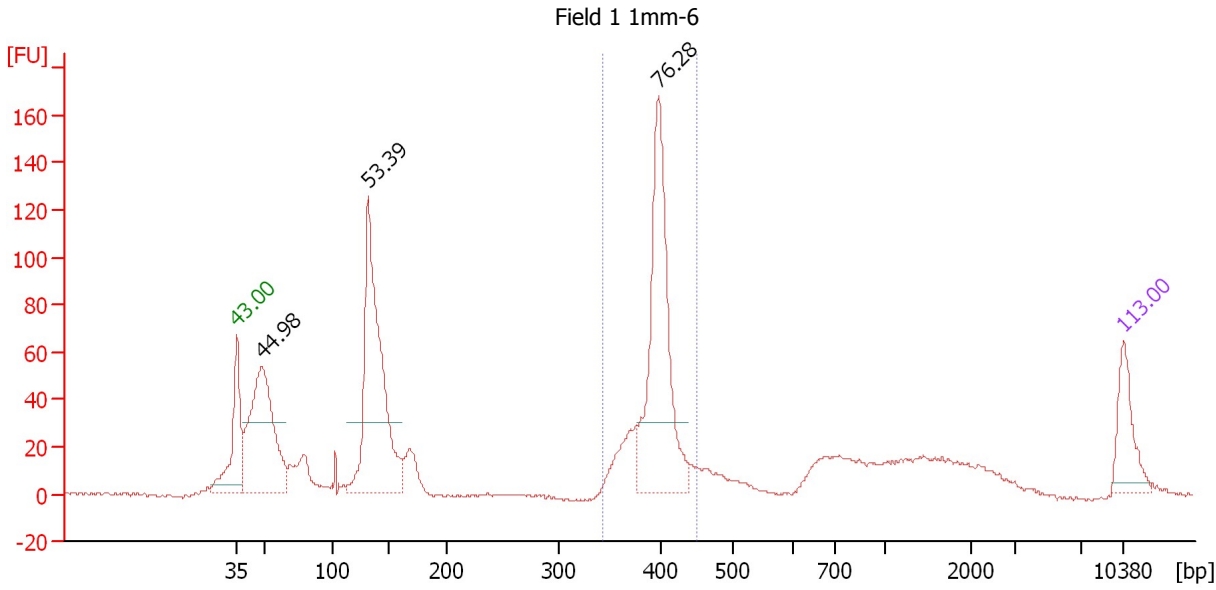
**Region table for sample 3 : Field 1 Endo-5**

From [bp]	To [bp]	Average Size [bp]	Molarity [pmol/l]	Conc. [pg/μl]	Corr. Area	% of Total	Size distribution in CV [%]	Color
342	455	395	5,848.0	1,520.26	1,556.0	63	4.7	Blue

Assay Class: High Sensitivity DNA Assay  
 Data Path: C:\...ents and Settings\Bioanalyzer\2013-10-16\2013-10-16\_005.xad

Created: 10/16/2013 2:13:57 PM  
 Modified: 10/16/2013 3:00:09 PM

**Electropherogram Summary Continued ...**



**Setpoint Deviations for sample 4 : Field 1 1mm-6**

Height Threshold [FU] : 30

**Overall Results for sample 4 : Field 1 1mm-6**

Number of peaks found: 3                      Corr. Area 1: 442.5  
 Noise: 0.7

**Peak table for sample 4 : Field 1 1mm-6**

Peak	Size [bp]	Conc. [pg/µl]	Molarity [pmol/l]	Observations
1	35	125.00	5,411.3	Lower Marker
2	48	543.52	17,014.4	
3	132	682.33	7,845.7	
4	397	490.10	1,868.4	
5	10,380	75.00	10.9	Upper Marker

**Region table for sample 4 : Field 1 1mm-6**

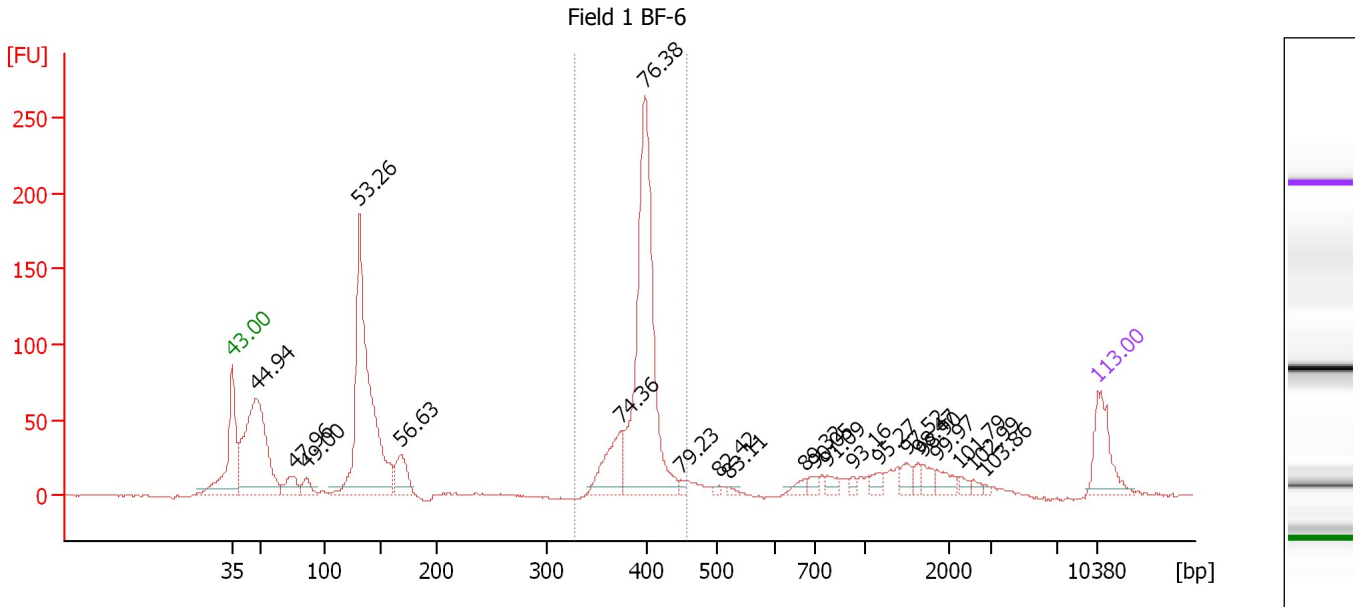
From [bp]	To [bp]	Average Size [bp]	Molarity [pmol/l]	Conc. [pg/µl]	Corr. Area	% of Total	Size distribution in CV [%]	Color
343	451	396	2,319.8	604.64	442.5	30	4.7	Blue



Assay Class: High Sensitivity DNA Assay  
 Data Path: C:\...ents and Settings\Bioanalyzer\2013-10-16\2013-10-16\_005.xad

Created: 10/16/2013 2:13:57 PM  
 Modified: 10/16/2013 3:00:09 PM

**Electropherogram Summary Continued ...**



**Overall Results for sample 5 : Field 1 BF-6**

Number of peaks found: 22                      Corr. Area 1: 641.1  
 Noise: 0.6

**Peak table for sample 5 : Field 1 BF-6**

Peak	Size [bp]	Conc. [pg/μl]	Molarity [pmol/l]	Observations
1	35	125.00	5,411.3	Lower Marker
2	48	516.43	16,249.2	
3	76	50.31	1,003.2	
4	86	32.74	578.4	
5	130	734.53	8,535.4	
6	168	78.76	711.6	
7	374	113.60	460.5	
8	399	616.75	2,343.4	
9	448	8.23	27.8	
10	505	5.60	16.8	
11	520	5.27	15.4	
12	675	15.17	34.0	
13	698	13.12	28.5	
14	770	16.80	33.0	
15	922	6.96	11.4	
16	1,154	14.55	19.1	
17	1,486	18.41	18.8	
18	1,626	12.64	11.8	
19	1,690	16.36	14.7	
20	1,850	24.53	20.1	
21	2,236	9.14	6.2	
22	2,596	6.64	3.9	
23	2,852	3.32	1.8	
24	10,380	75.00	10.9	Upper Marker

Assay Class: High Sensitivity DNA Assay  
Data Path: C:\...ents and Settings\Bioanalyzer\2013-10-16\2013-10-16\_005.xad

Created: 10/16/2013 2:13:57 PM  
Modified: 10/16/2013 3:00:09 PM

**Electropherogram Summary Continued ...**

... Region table for sample 5 :

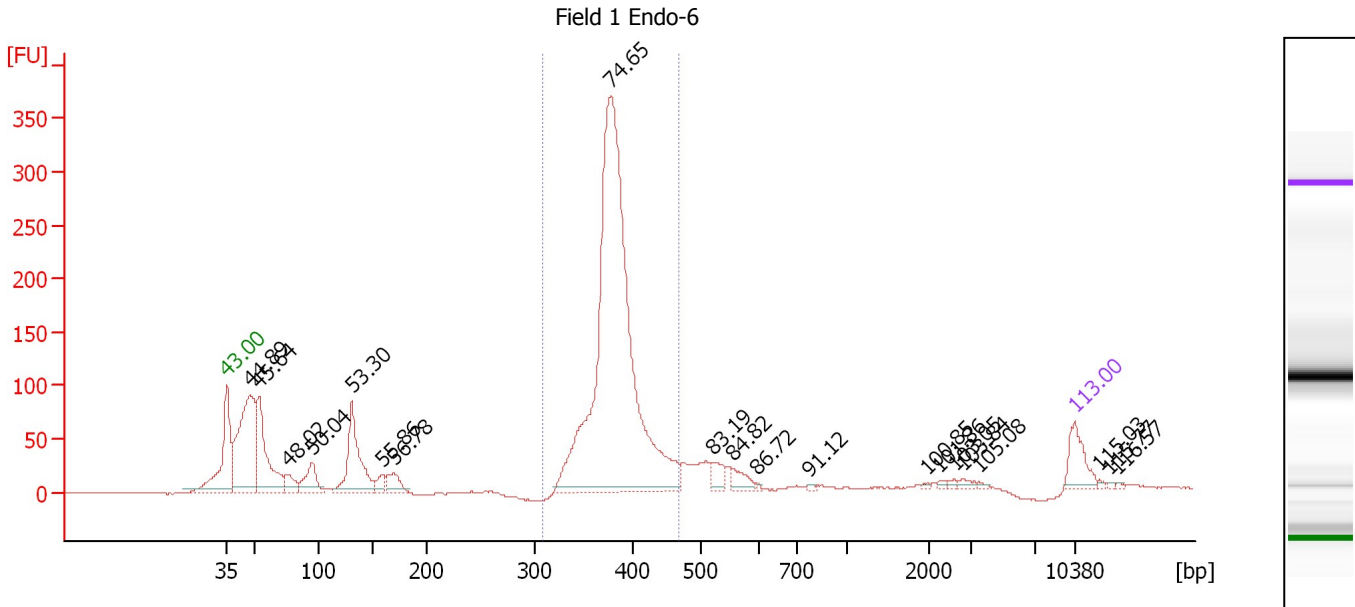
**Field 1 BF-6**

<b>From [bp]</b>	<b>To [bp]</b>	<b>Average Size [bp]</b>	<b>Molarity [pmol/l]</b>	<b>Conc. [pg/μl]</b>	<b>Corr. Area</b>	<b>% of Total</b>	<b>Size distribution in CV [%]</b>	<b>Co lor</b>
328	457	396	2,869.8	748.38	641.1	36	4.5	

Assay Class: High Sensitivity DNA Assay  
 Data Path: C:\...ents and Settings\Bioanalyzer\2013-10-16\2013-10-16\_005.xad

Created: 10/16/2013 2:13:57 PM  
 Modified: 10/16/2013 3:00:09 PM

**Electropherogram Summary Continued ...**



**Overall Results for sample 6 : Field 1 Endo-6**

Number of peaks found: 20                      Corr. Area 1: 1,522.8  
 Noise: 0.5

**Peak table for sample 6 : Field 1 Endo-6**

Peak	Size [bp]	Conc. [pg/μl]	Molarity [pmol/l]	Observations
1	35	125.00	5,411.3	Lower Marker
2	48	631.18	19,994.2	
3	54	394.55	11,059.9	
4	77	72.37	1,432.7	
5	96	126.44	2,002.0	
6	131	334.98	3,880.4	
7	159	42.41	404.0	
8	169	70.70	632.4	
9	377	2,112.58	8,480.2	
10	522	50.46	146.5	
11	557	44.57	121.3	
12	597	4.39	11.1	
13	772	5.28	10.4	
14	1,979	4.37	3.3	
15	2,259	6.06	4.1	
16	2,613	7.89	4.6	
17	2,848	11.89	6.3	
18	3,543	5.39	2.3	
19	10,380	75.00	10.9	Upper Marker
20	12,442	0.00	0.0	
21	13,204	0.00	0.0	
22	14,011	0.00	0.0	

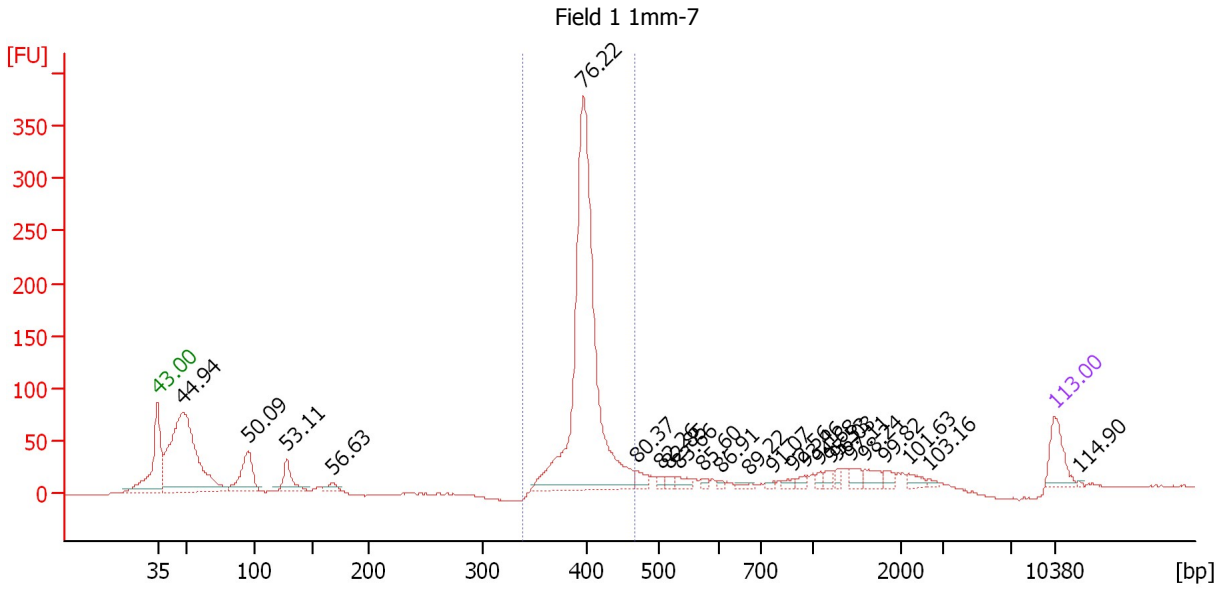
**Region table for sample 6 : Field 1 Endo-6**

From [bp]	To [bp]	Average Size [bp]	Molarity [pmol/l]	Conc. [pg/μl]	Corr. Area	% of Total	Size distribution in CV [%]	Color
309	466	383	8,152.0	2,055.72	1,522.8	58	6.3	Blue

Assay Class: High Sensitivity DNA Assay  
 Data Path: C:\...ents and Settings\Bioanalyzer\2013-10-16\2013-10-16\_005.xad

Created: 10/16/2013 2:13:57 PM  
 Modified: 10/16/2013 3:00:09 PM

**Electropherogram Summary Continued ...**



**Overall Results for sample 7 : Field 1 1mm-7**

Number of peaks found: 24                      Corr. Area 1: 898.5  
 Noise: 0.5

**Peak table for sample 7 : Field 1 1mm-7**


Peak	Size [bp]	Conc. [pg/μl]	Molarity [pmol/l]	Observations
1	35	125.00	5,411.3	Lower Marker
2	48	879.10	27,660.8	
3	96	178.54	2,815.4	
4	129	94.02	1,107.0	
5	168	27.05	244.4	
6	397	1,307.00	4,991.7	
7	468	33.04	106.9	
8	502	12.71	38.4	
9	514	15.11	44.5	
10	532	24.47	69.7	
11	573	10.86	28.7	
12	602	6.88	17.3	
13	672	9.80	22.1	
14	768	7.24	14.3	
15	877	12.50	21.6	
16	944	13.10	21.0	
17	1,066	11.18	15.9	
18	1,193	16.64	21.1	
19	1,266	12.76	15.3	
20	1,426	23.16	24.6	
21	1,593	30.50	29.0	
22	1,827	16.75	13.9	
23	2,189	17.63	12.2	
24	2,646	6.69	3.8	
25	10,380	75.00	10.9	Upper Marker
26	12,310	0.00	0.0	

Assay Class: High Sensitivity DNA Assay  
Data Path: C:\...ents and Settings\Bioanalyzer\2013-10-16\2013-10-16\_005.xad

Created: 10/16/2013 2:13:57 PM  
Modified: 10/16/2013 3:00:09 PM

**Electropherogram Summary Continued ...**

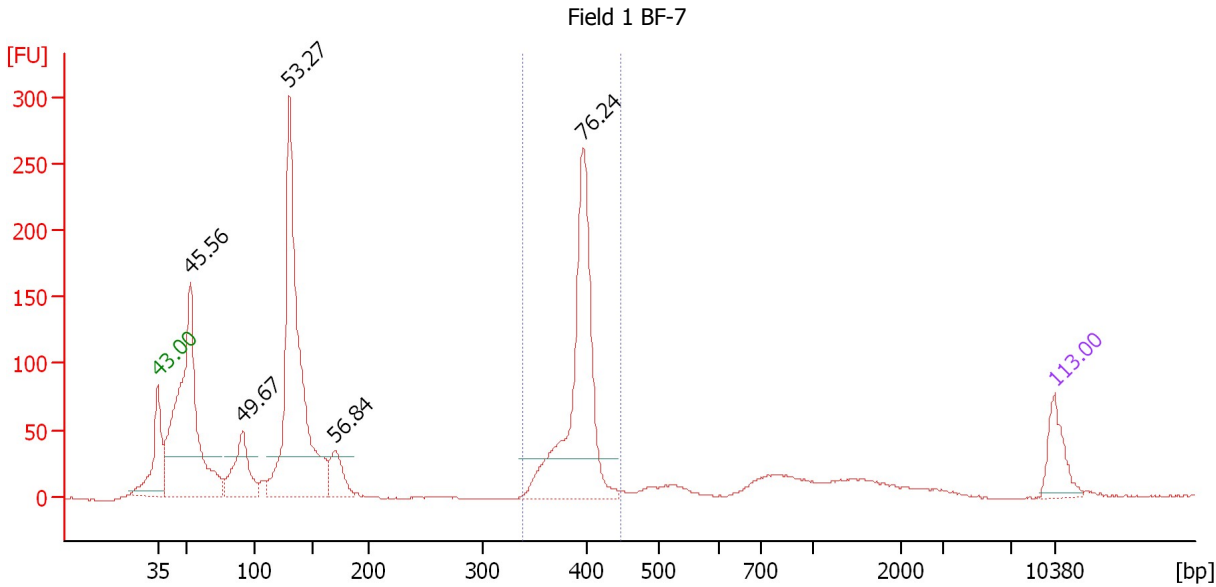
... Region table for sample 7 : Field 1 1mm-7

From [bp]	To [bp]	Average Size [bp]	Molarity [pmol/l]	Conc. [pg/μl]	Corr. Area	% of Total	Size distribution in CV [%]	Color
338	467	401	4,984.4	1,317.07	898.5	50	4.7	

Assay Class: High Sensitivity DNA Assay  
 Data Path: C:\...ents and Settings\Bioanalyzer\2013-10-16\2013-10-16\_005.xad

Created: 10/16/2013 2:13:57 PM  
 Modified: 10/16/2013 3:00:09 PM

**Electropherogram Summary Continued ...**



**Setpoint Deviations for sample 8 : Field 1 BF-7**

Height Threshold [FU] : 30

**Overall Results for sample 8 : Field 1 BF-7**

Number of peaks found: 5                      Corr. Area 1: 578.9  
 Noise: 0.7

**Peak table for sample 8 : Field 1 BF-7**

Peak	Size [bp]	Conc. [pg/μl]	Molarity [pmol/l]	Observations
1	35	125.00	5,411.3	Lower Marker
2	53	922.54	26,248.1	
3	92	205.85	3,385.8	
4	130	1,080.65	12,547.8	
5	170	112.26	1,000.6	
6	397	655.79	2,502.7	
7	10,380	75.00	10.9	Upper Marker

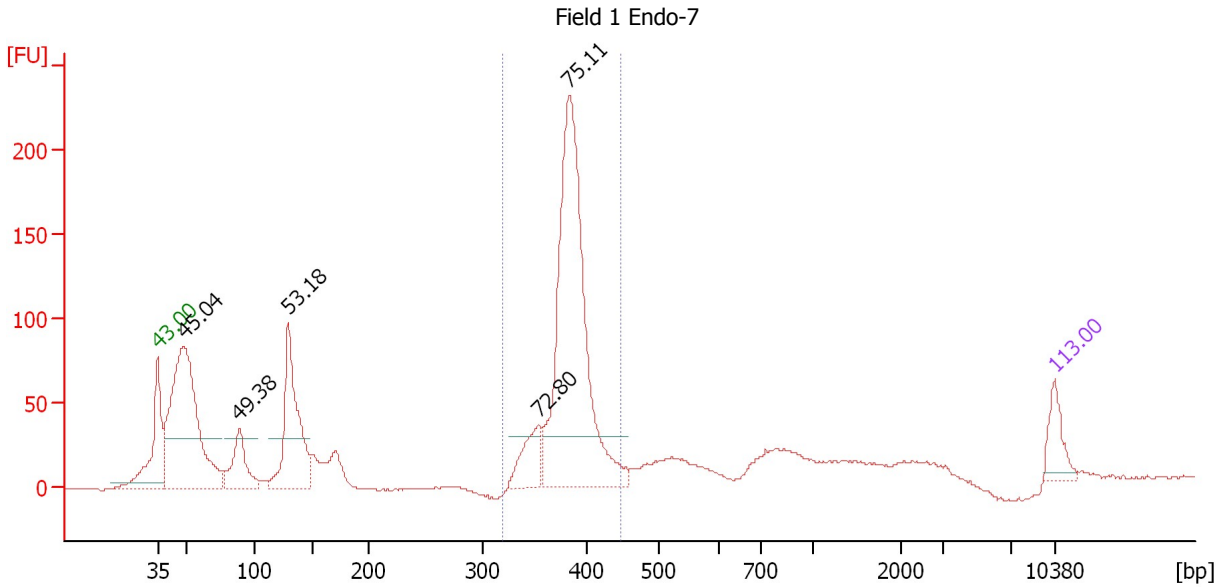
**Region table for sample 8 : Field 1 BF-7**

From [bp]	To [bp]	Average Size [bp]	Molarity [pmol/l]	Conc. [pg/μl]	Corr. Area	% of Total	Size distribution in CV [%]	Color
338	446	392	2,475.5	640.59	578.9	25	4.0	Blue

Assay Class: High Sensitivity DNA Assay  
 Data Path: C:\...ents and Settings\Bioanalyzer\2013-10-16\2013-10-16\_005.xad

Created: 10/16/2013 2:13:57 PM  
 Modified: 10/16/2013 3:00:09 PM

**Electropherogram Summary Continued ...**



**Setpoint Deviations for sample 9 : Field 1 Endo-7**

Height Threshold [FU] : 30

**Overall Results for sample 9 : Field 1 Endo-7**

Number of peaks found: 5                      Corr. Area 1: 788.5  
 Noise: 0.3

**Peak table for sample 9 : Field 1 Endo-7**

Peak	Size [bp]	Conc. [pg/μl]	Molarity [pmol/l]	Observations
1	35	125.00	5,411.3	Lower Marker
2	49	1,111.15	34,500.9	
3	89	212.78	3,604.2	
4	129	524.72	6,142.1	
5	355	144.41	617.1	
6	383	1,237.57	4,895.2	
7	10,380	75.00	10.9	Upper Marker

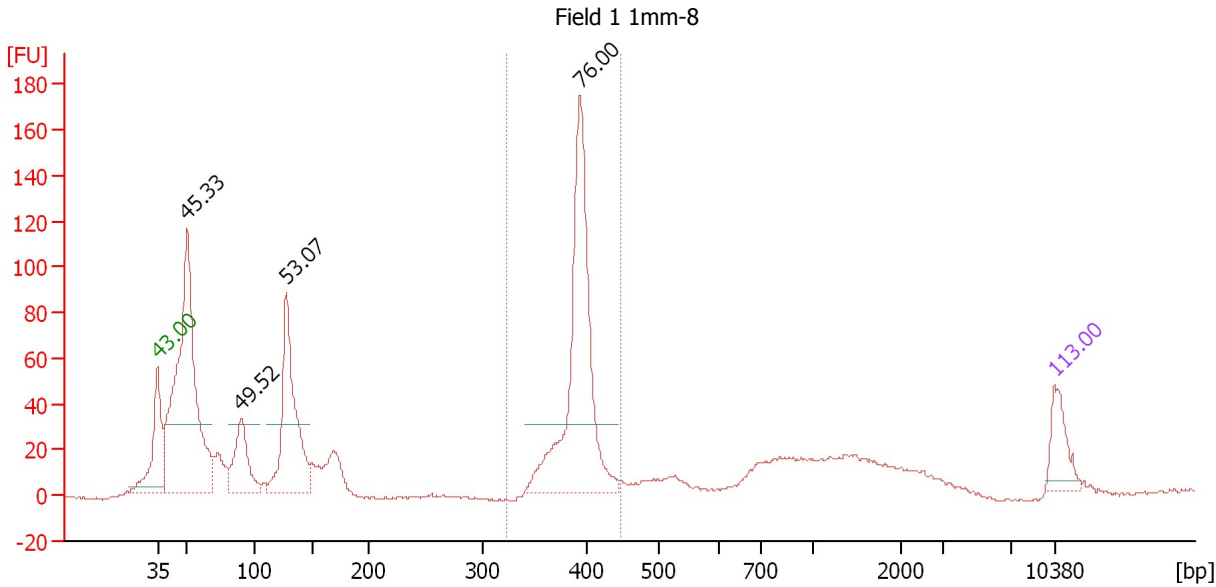
**Region table for sample 9 : Field 1 Endo-7**

From [bp]	To [bp]	Average Size [bp]	Molarity [pmol/l]	Conc. [pg/μl]	Corr. Area	% of Total	Size distribution in CV [%]	Color
320	448	384	5,244.6	1,325.91	788.5	41	5.0	Blue

Assay Class: High Sensitivity DNA Assay  
 Data Path: C:\...ents and Settings\Bioanalyzer\2013-10-16\2013-10-16\_005.xad

Created: 10/16/2013 2:13:57 PM  
 Modified: 10/16/2013 3:00:09 PM

**Electropherogram Summary Continued ...**



**Setpoint Deviations for sample 10 : Field 1 1mm-8**

Height Threshold [FU] : 30

**Overall Results for sample 10 : Field 1 1mm-8**

Number of peaks found: 4                      Corr. Area 1: 383.3  
 Noise: 0.6

**Peak table for sample 10 : Field 1 1mm-8**

Peak	Size [bp]	Conc. [pg/µl]	Molarity [pmol/l]	Observations
1	35	125.00	5,411.3	Lower Marker
2	51	1,108.34	32,858.2	
3	91	212.19	3,541.7	
4	128	495.50	5,855.7	
5	394	703.81	2,706.6	
6	10,380	75.00	10.9	Upper Marker

**Region table for sample 10 : Field 1 1mm-8**

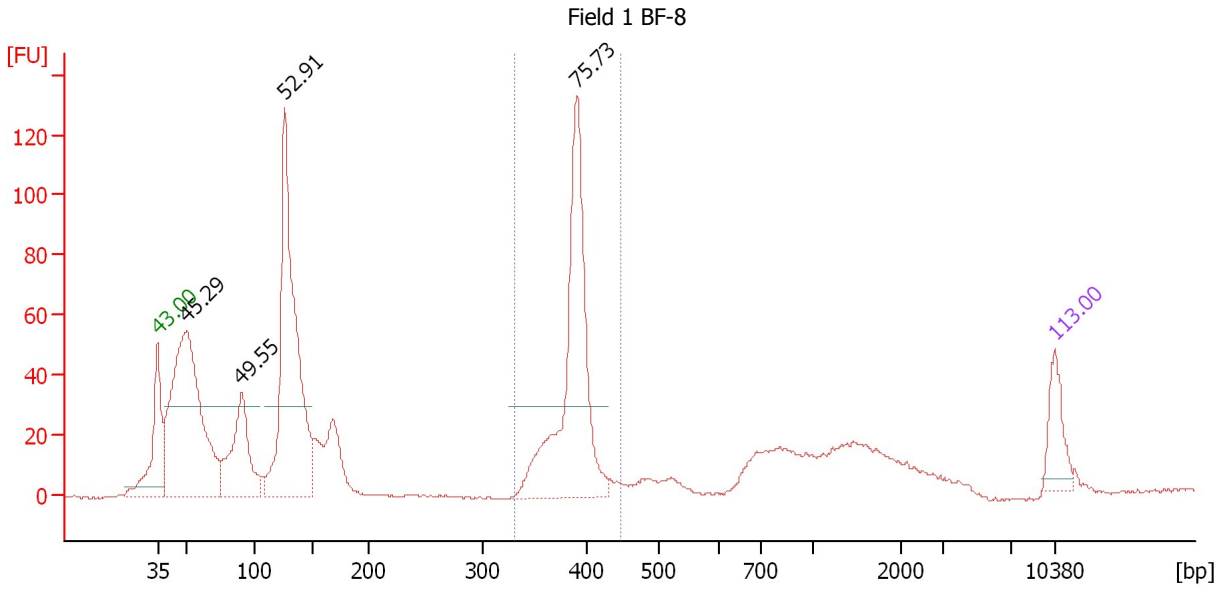
From [bp]	To [bp]	Average Size [bp]	Molarity [pmol/l]	Conc. [pg/µl]	Corr. Area	% of Total	Size distribution in CV [%]	Color
323	447	392	2,753.4	712.29	383.3	27	4.0	Blue



Assay Class: High Sensitivity DNA Assay  
 Data Path: C:\...ents and Settings\Bioanalyzer\2013-10-16\2013-10-16\_005.xad

Created: 10/16/2013 2:13:57 PM  
 Modified: 10/16/2013 3:00:09 PM

**Electropherogram Summary Continued ...**



**Setpoint Deviations for sample 11 : Field 1 BF-8**

Height Threshold [FU] : 30

**Overall Results for sample 11 : Field 1 BF-8**

Number of peaks found: 4                      Corr. Area 1: 301.4  
 Noise: 0.4

**Peak table for sample 11 : Field 1 BF-8**

Peak	Size [bp]	Conc. [pg/μl]	Molarity [pmol/l]	Observations
1	35	125.00	5,411.3	Lower Marker
2	51	972.40	29,037.5	
3	91	318.39	5,302.3	
4	127	926.93	11,100.2	
5	391	648.83	2,515.9	
6	10,380	75.00	10.9	Upper Marker

**Region table for sample 11 : Field 1 BF-8**

From [bp]	To [bp]	Average Size [bp]	Molarity [pmol/l]	Conc. [pg/μl]	Corr. Area	% of Total	Size distribution in CV [%]	Color
331	447	387	2,466.1	629.53	301.4	23	4.3	Blue

Assay Class: High Sensitivity DNA Assay  
Data Path: C:\...ents and Settings\Bioanalyzer\2013-10-16\2013-10-16\_005.xad

Created: 10/16/2013 2:13:57 PM  
Modified: 10/16/2013 3:00:09 PM

**Gel Image**

