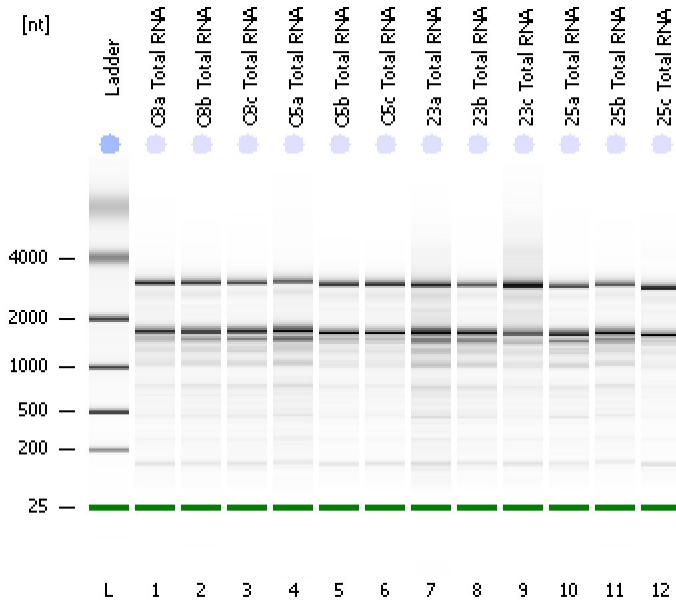


Assay Class: Eukaryote Total RNA Nano
Data Path: C:\...ents and Settings\Bioanalyzer\2013-10-16\2013-10-16_007.xad

Created: 10/16/2013 4:57:19 PM
Modified: 10/16/2013 5:23:51 PM

Electrophoresis File Run Summary



Instrument Information:

Instrument Name: DE13701086 Firmware: C.01.069
Serial#: DE13701086 Type: G2938B

Assay Information:

Assay Origin Path: C:\Program Files\Agilent\2100 bioanalyzer\2100 expert\assays\RNA\Eukaryote Total RNA Nano Series II.xsy

Assay Class: Eukaryote Total RNA Nano

Version: 2.6

Assay Comments: Total RNA Analysis ng sensitivity (Eukaryote)

© Copyright 2003 - 2009 Agilent Technologies, Inc.

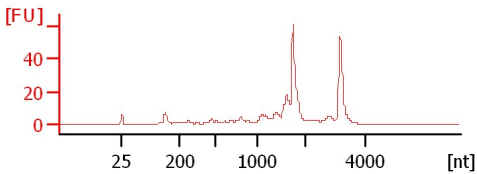
Chip Information:

Chip Lot #:

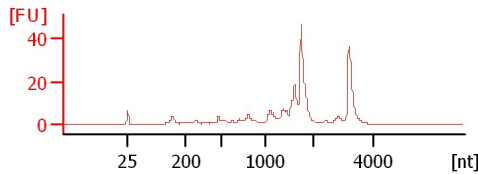
Reagent Kit Lot #:

Chip Comments:

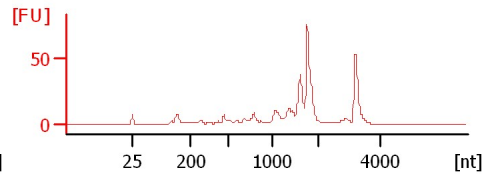
O3a Total RNA
RIN: 6.80



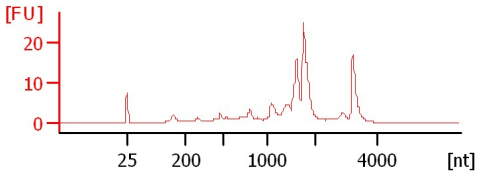
O3b Total RNA
RIN: 6.70



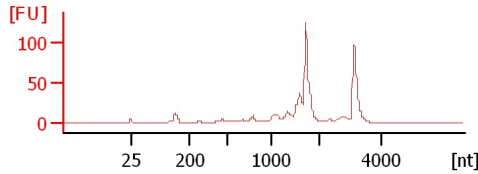
O3c Total RNA
RIN: 6.50



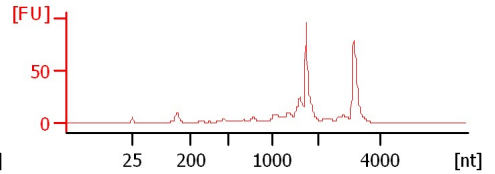
O5a Total RNA
RIN: 6.50



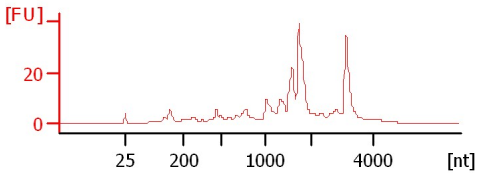
O5b Total RNA
RIN: 6.90



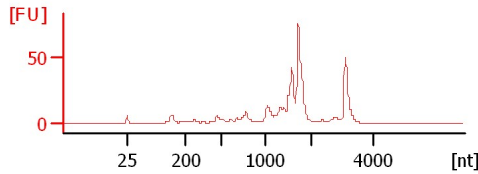
O5c Total RNA
RIN: 6.90



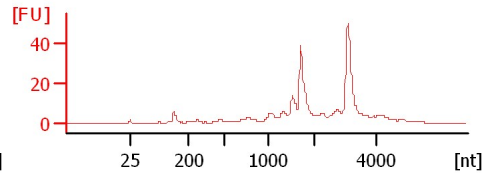
23a Total RNA
RIN: 6.50



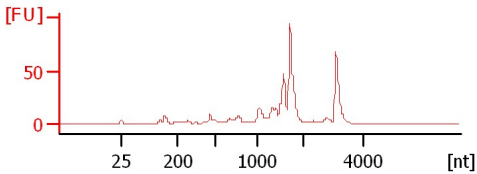
23b Total RNA
RIN: 6.40



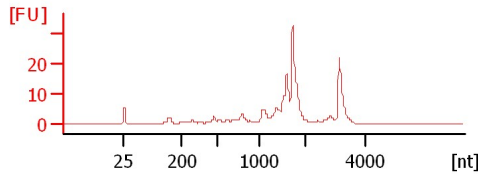
23c Total RNA
RIN: 7.60



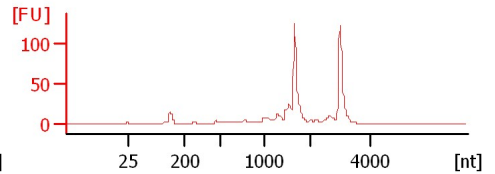
25a Total RNA
RIN: 6.50



25b Total RNA
RIN: 6.60



25c Total RNA
RIN: 7.40



Assay Class: Eukaryote Total RNA Nano
 Data Path: C:\...ents and Settings\Bioanalyzer\2013-10-16\2013-10-16_007.xad

Created: 10/16/2013 4:57:19 PM
 Modified: 10/16/2013 5:23:51 PM

Electrophoresis File Run Summary (Chip Summary)

Sample Name	Sample Comment	Status	Result Label	Result Color
O3a Total RNA		✓	RIN: 6.80	
O3b Total RNA		✓	RIN: 6.70	
O3c Total RNA		✓	RIN: 6.50	
O5a Total RNA		✓	RIN: 6.50	
O5b Total RNA		✓	RIN: 6.90	
O5c Total RNA		✓	RIN: 6.90	
23a Total RNA		✓	RIN: 6.50	
23b Total RNA		✓	RIN: 6.40	
23c Total RNA		✓	RIN: 7.60	
25a Total RNA		✓	RIN: 6.50	
25b Total RNA		✓	RIN: 6.60	
25c Total RNA		✓	RIN: 7.40	
Ladder		✓	All Other Samples	

Chip Lot #

Reagent Kit Lot #

Chip Comments :

Assay Class: Eukaryote Total RNA Nano
Data Path: C:\...ents and Settings\Bioanalyzer\2013-10-16\2013-10-16_007.xad

Created: 10/16/2013 4:57:19 PM
Modified: 10/16/2013 5:23:51 PM

Electrophoresis Assay Details

General Analysis Settings

Number of Available Sample and Ladder Wells (Max.) : 13
Minimum Visible Range [s] : 17
Maximum Visible Range [s] : 70
Start Analysis Time Range [s] : 19
End Analysis Time Range [s] : 69
Ladder Concentration [ng/μl] : 150
Lower Marker Concentration [ng/μl] : 0
Upper Marker Concentration [ng/μl] : 0
Used Lower Marker for Quantitation
Standard Curve Fit is Logarithmic
Show Data Aligned to Lower Marker

Integrator Settings

Integration Start Time [s] : 19
Integration End Time [s] : 69
Slope Threshold : 0.6
Height Threshold [FU] : 0.5
Area Threshold : 0.2
Width Threshold [s] : 0.5
Baseline Plateau [s] : 6

Filter Settings

Filter Width [s] : 0.5
Polynomial Order : 4

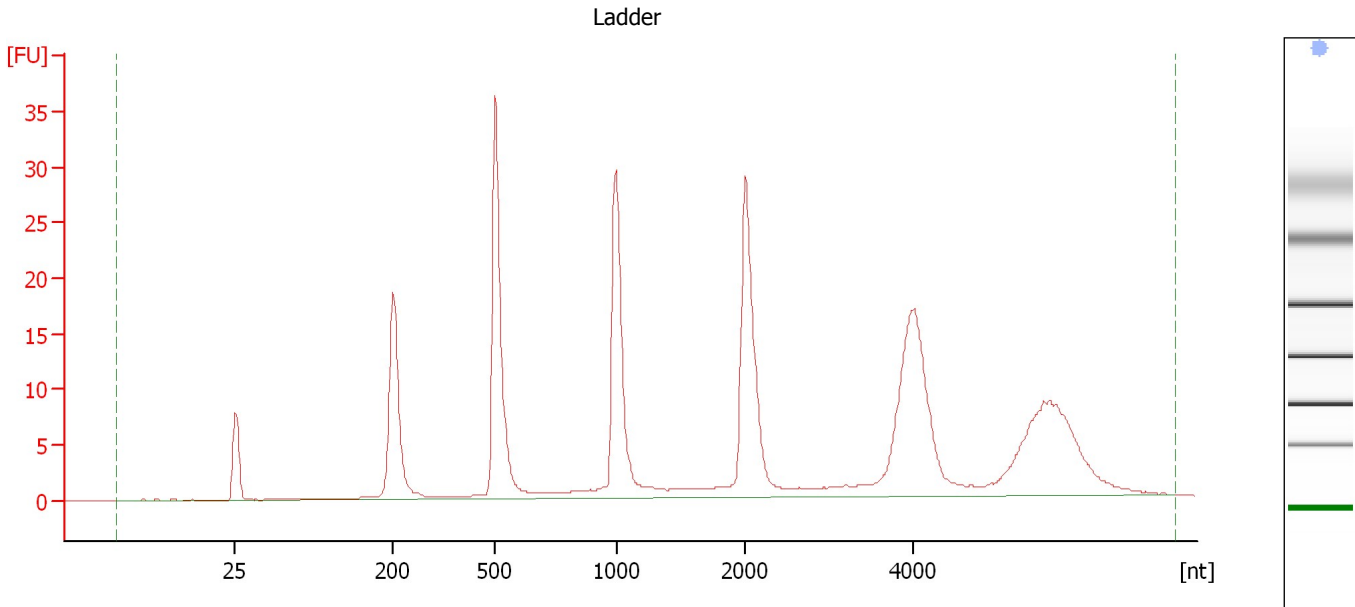
Ladder

Ladder Peak	Size
1	25
2	200
3	500
4	1000
5	2000
6	4000

Assay Class: Eukaryote Total RNA Nano
Data Path: C:\...ents and Settings\Bioanalyzer\2013-10-16\2013-10-16_007.xad

Created: 10/16/2013 4:57:19 PM
Modified: 10/16/2013 5:23:51 PM

Electropherogram Summary



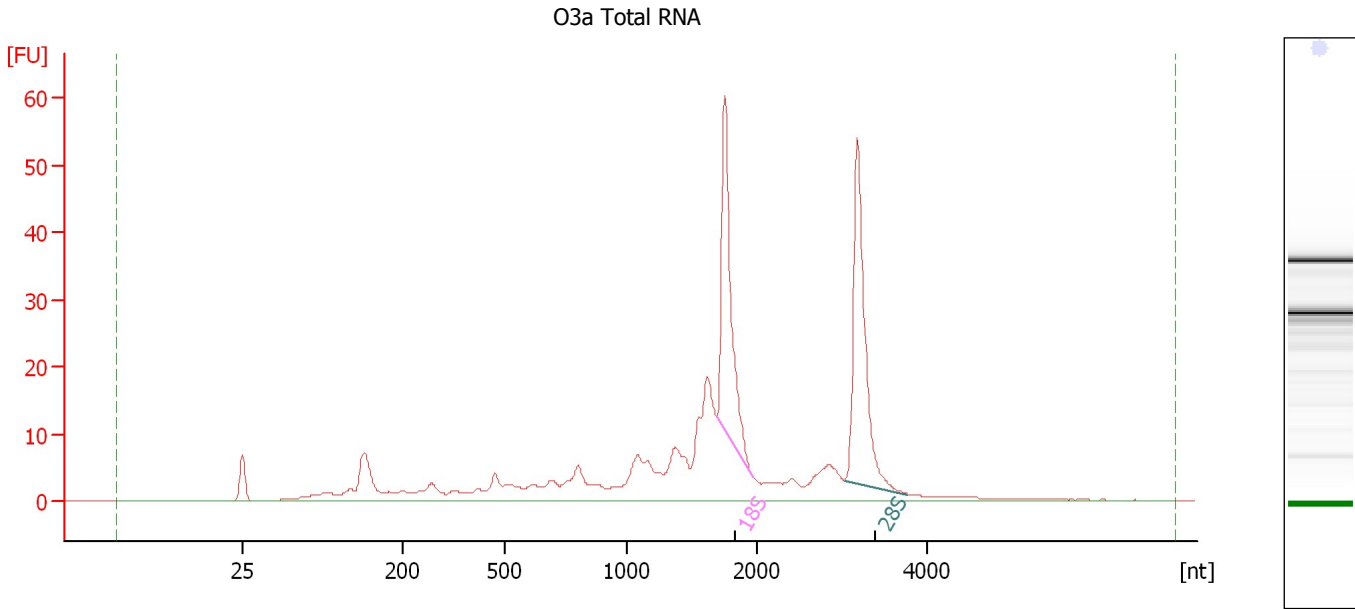
Overall Results for Ladder

RNA Area:	266.3	Result Flagging Color:	
RNA Concentration:	150 ng/μl	Result Flagging Label:	All Other Samples

Assay Class: Eukaryote Total RNA Nano
Data Path: C:\...ents and Settings\Bioanalyzer\2013-10-16\2013-10-16_007.xad

Created: 10/16/2013 4:57:19 PM
Modified: 10/16/2013 5:23:51 PM

Electropherogram Summary Continued ...



Overall Results for sample 1 : O3a Total RNA

RNA Area: 338.2 RNA Integrity Number (RIN): 6.8 (B.02.08, Anomaly Threshold(s) manually adapted)
RNA Concentration: 191 ng/μl
rRNA Ratio [28s / 18s]: 1.2
Result Flagging Color:
Result Flagging Label: RIN: 6.80

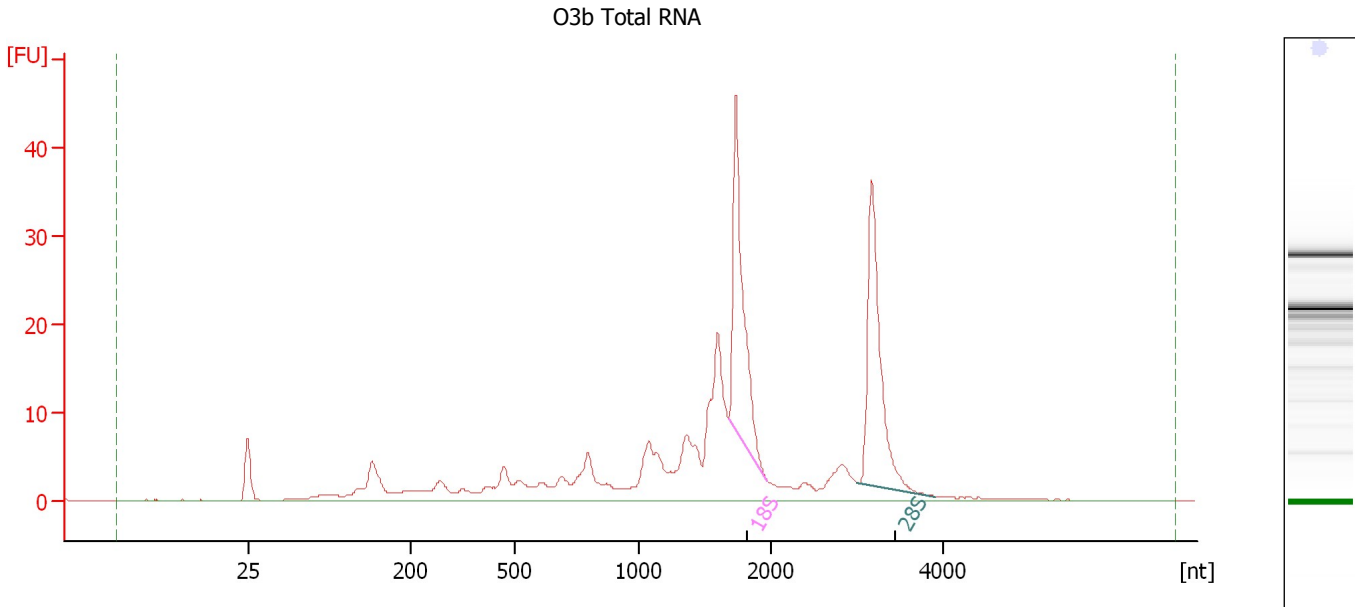
Fragment table for sample 1 : O3a Total RNA

Name	Start Size [nt]	End Size [nt]	Area	% of total Area
18S	1,692	1,961	49.8	14.7
28S	3,023	3,765	57.5	17.0

Assay Class: Eukaryote Total RNA Nano
 Data Path: C:\...ents and Settings\Bioanalyzer\2013-10-16\2013-10-16_007.xad

Created: 10/16/2013 4:57:19 PM
 Modified: 10/16/2013 5:23:51 PM

Electropherogram Summary Continued ...



Overall Results for sample 2 : O3b Total RNA

RNA Area:	267.7	RNA Integrity Number (RIN):	6.7 (B.02.08, Anomaly Threshold(s) manually adapted)
RNA Concentration:	151 ng/μl	Result Flagging Color:	
rRNA Ratio [28s / 18s]:	1.0	Result Flagging Label:	RIN: 6.70

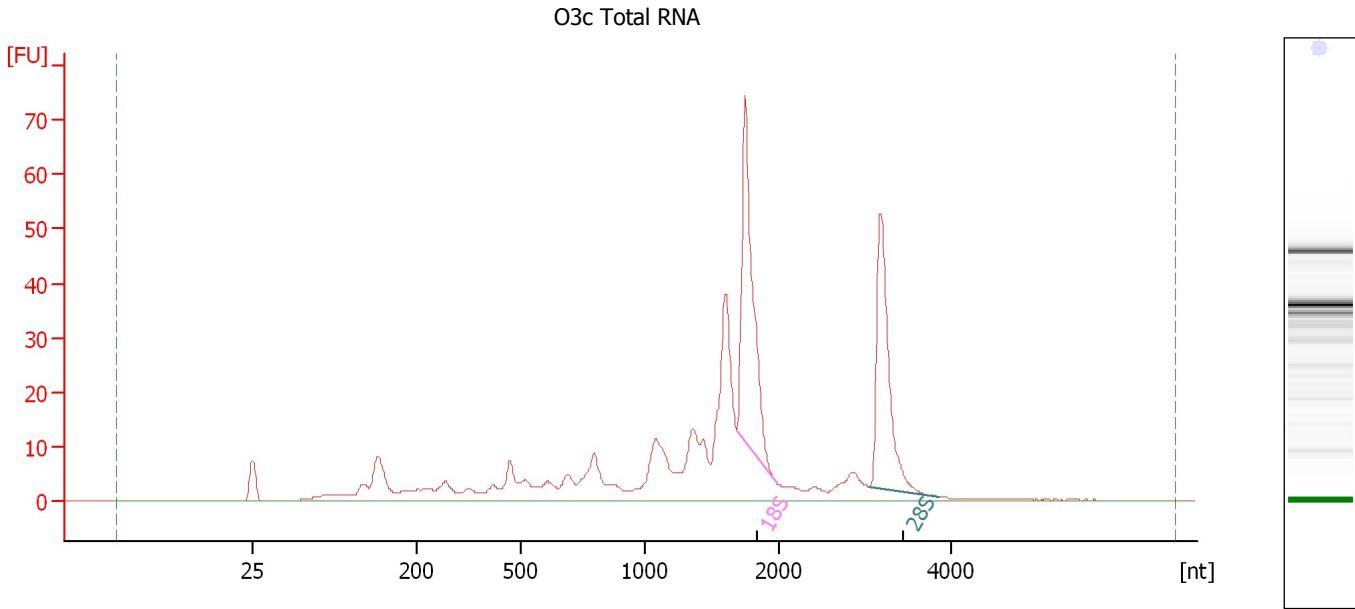
Fragment table for sample 2 : O3b Total RNA

Name	Start Size [nt]	End Size [nt]	Area	% of total Area
18S	1,681	1,980	41.5	15.5
28S	3,014	3,910	42.9	16.0

Assay Class: Eukaryote Total RNA Nano
Data Path: C:\...ents and Settings\Bioanalyzer\2013-10-16\2013-10-16_007.xad

Created: 10/16/2013 4:57:19 PM
Modified: 10/16/2013 5:23:51 PM

Electropherogram Summary Continued ...



Overall Results for sample 3 : O3c Total RNA

RNA Area: 427.0 RNA Integrity Number (RIN): 6.5 (B.02.08, Anomaly Threshold(s) manually adapted)
RNA Concentration: 241 ng/μl
rRNA Ratio [28s / 18s]: 0.8
Result Flagging Color:
Result Flagging Label: RIN: 6.50

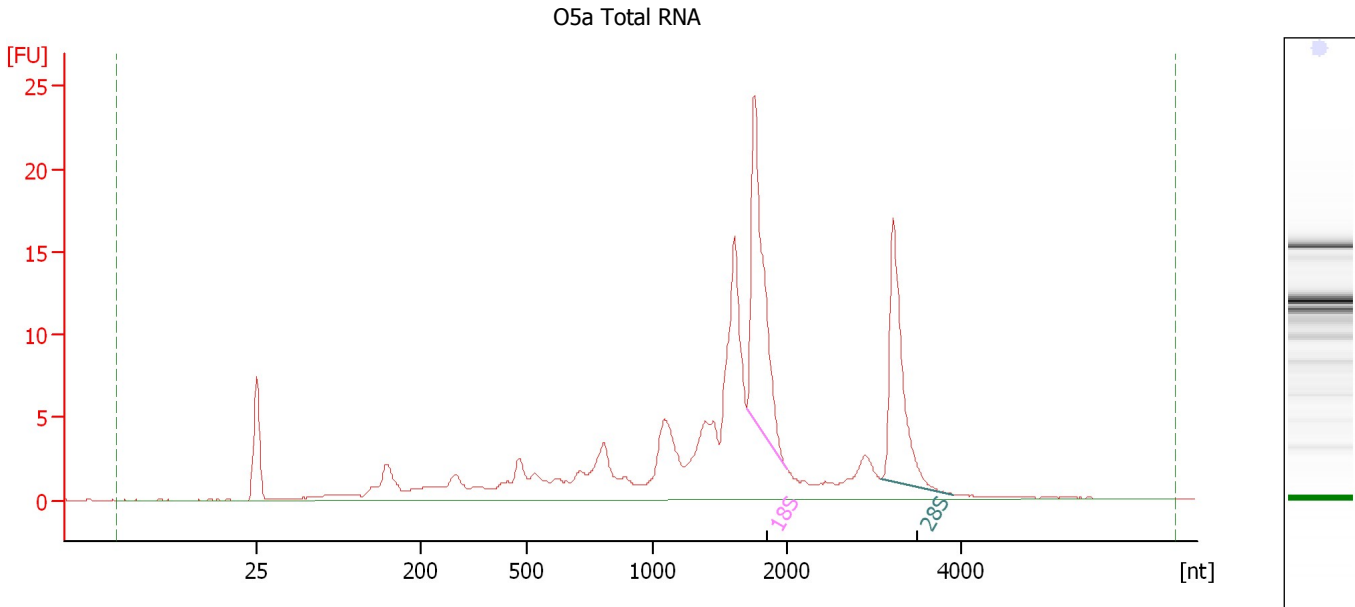
Fragment table for sample 3 : O3c Total RNA

Name	Start Size [nt]	End Size [nt]	Area	% of total Area
18S	1,685	1,982	74.7	17.5
28S	3,034	3,861	58.2	13.6

Assay Class: Eukaryote Total RNA Nano
 Data Path: C:\...ents and Settings\Bioanalyzer\2013-10-16\2013-10-16_007.xad

Created: 10/16/2013 4:57:19 PM
 Modified: 10/16/2013 5:23:51 PM

Electropherogram Summary Continued ...



Overall Results for sample 4 : O5a Total RNA

RNA Area:	169.8	RNA Integrity Number (RIN):	6.5 (B.02.08, Anomaly Threshold(s) manually adapted)
RNA Concentration:	96 ng/μl	Result Flagging Color:	
rRNA Ratio [28s / 18s]:	0.7	Result Flagging Label:	RIN: 6.50

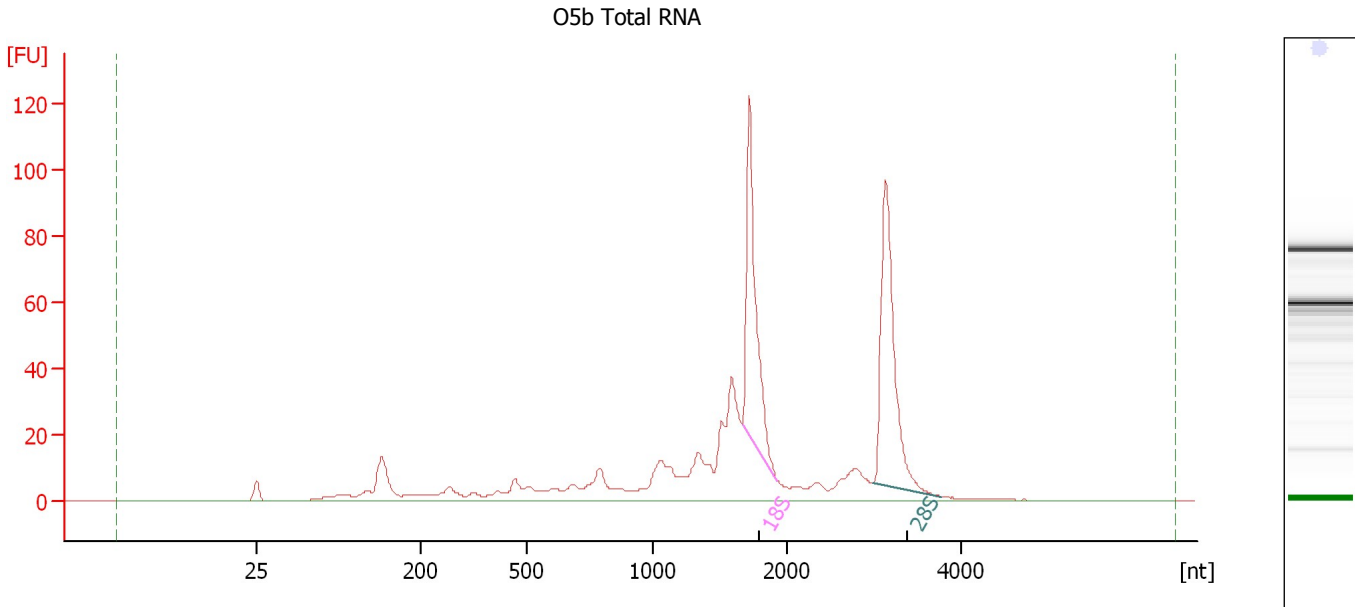
Fragment table for sample 4 : O5a Total RNA

Name	Start Size [nt]	End Size [nt]	Area	% of total Area
18S	1,697	1,999	25.5	15.0
28S	3,077	3,898	19.0	11.2

Assay Class: Eukaryote Total RNA Nano
 Data Path: C:\...ents and Settings\Bioanalyzer\2013-10-16\2013-10-16_007.xad

Created: 10/16/2013 4:57:19 PM
 Modified: 10/16/2013 5:23:51 PM

Electropherogram Summary Continued ...



Overall Results for sample 5 : O5b Total RNA

RNA Area:	617.8	RNA Integrity Number (RIN):	6.9 (B.02.08, Anomaly Threshold(s) manually adapted)
RNA Concentration:	348 ng/μl		
rRNA Ratio [28s / 18s]:	1.1	Result Flagging Color:	
		Result Flagging Label:	RIN: 6.90

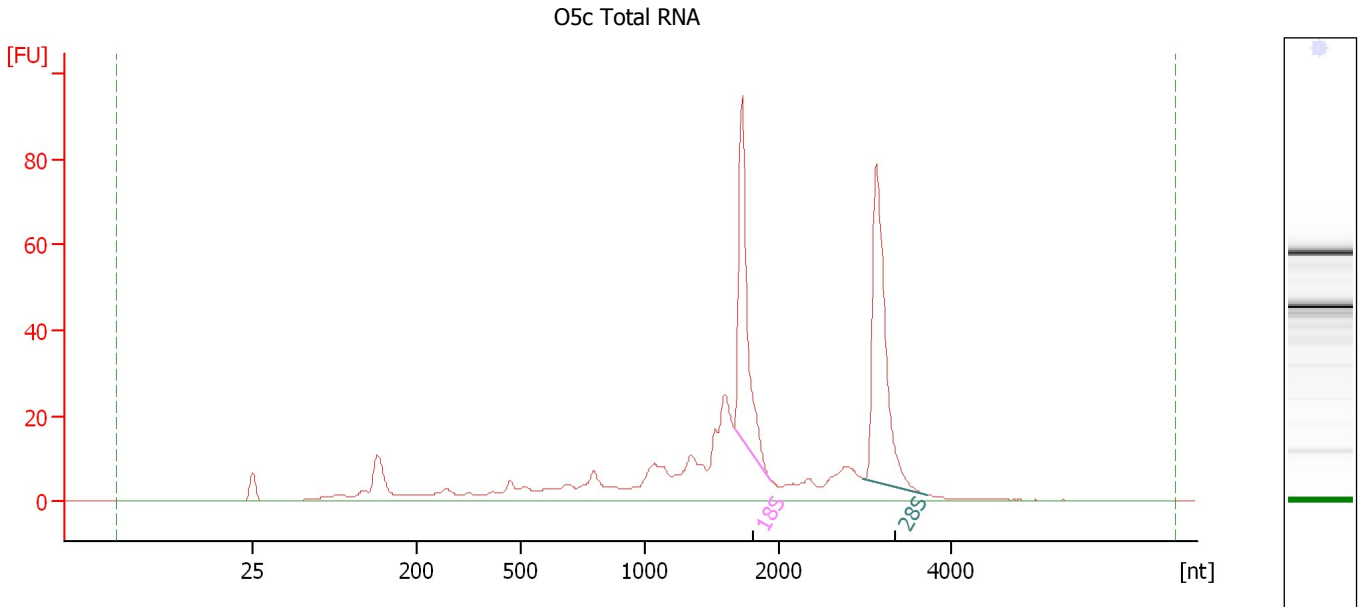
Fragment table for sample 5 : O5b Total RNA

Name	Start Size [nt]	End Size [nt]	Area	% of total Area
18S	1,665	1,928	102.0	16.5
28S	2,979	3,775	116.6	18.9

Assay Class: Eukaryote Total RNA Nano
 Data Path: C:\...ents and Settings\Bioanalyzer\2013-10-16\2013-10-16_007.xad

Created: 10/16/2013 4:57:19 PM
 Modified: 10/16/2013 5:23:51 PM

Electropherogram Summary Continued ...



Overall Results for sample 6 : O5c Total RNA

RNA Area:	475.0	RNA Integrity Number (RIN):	6.9 (B.02.08)
RNA Concentration:	268 ng/μl	Result Flagging Color:	
rRNA Ratio [28s / 18s]:	1.3	Result Flagging Label:	RIN: 6.90

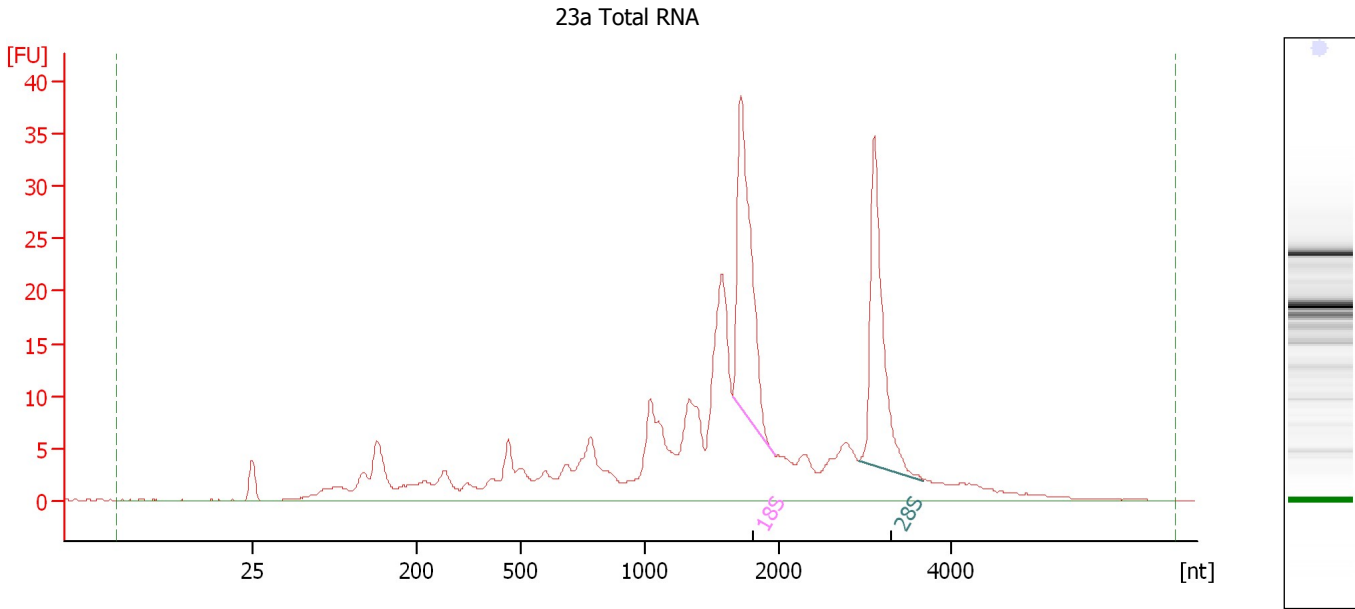
Fragment table for sample 6 : O5c Total RNA

Name	Start Size [nt]	End Size [nt]	Area	% of total Area
18S	1,669	1,942	71.8	15.1
28S	2,984	3,713	93.6	19.7

Assay Class: Eukaryote Total RNA Nano
Data Path: C:\...ents and Settings\Bioanalyzer\2013-10-16\2013-10-16_007.xad

Created: 10/16/2013 4:57:19 PM
Modified: 10/16/2013 5:23:51 PM

Electropherogram Summary Continued ...



Overall Results for sample 7 : 23a Total RNA

RNA Area: 350.5 RNA Integrity Number (RIN): 6.5 (B.02.08)
RNA Concentration: 197 ng/μl Result Flagging Color:
rRNA Ratio [28s / 18s]: 0.9 Result Flagging Label: RIN: 6.50

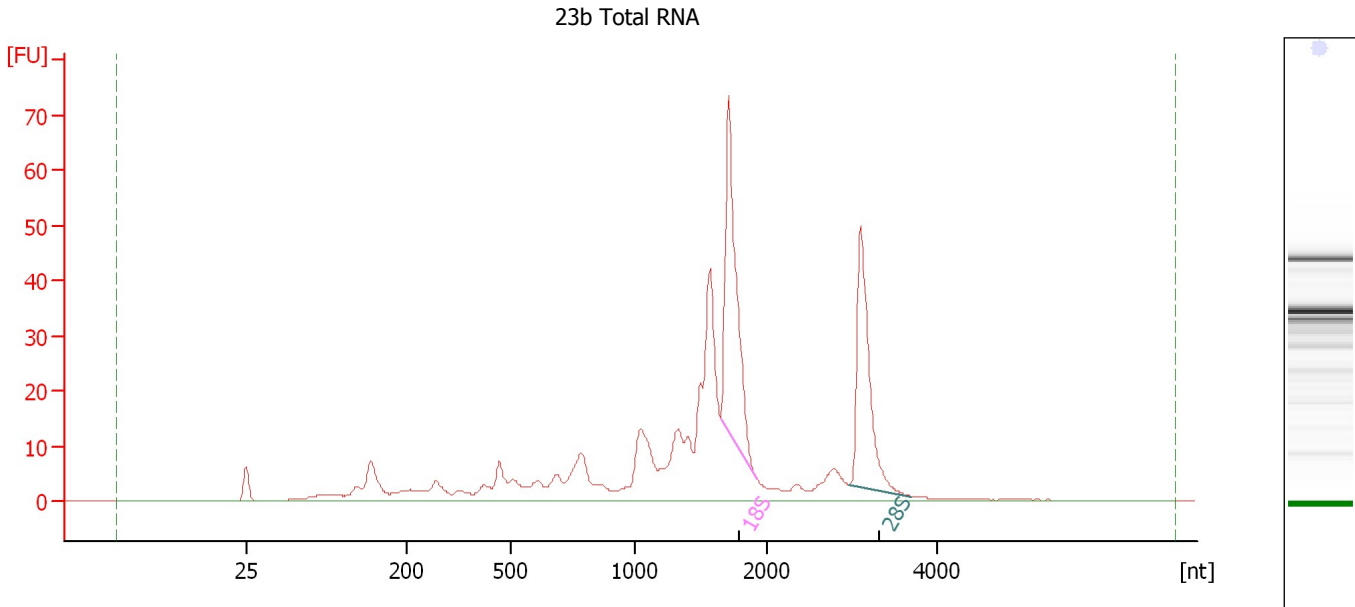
Fragment table for sample 7 : 23a Total RNA

Name	Start Size [nt]	End Size [nt]	Area	% of total Area
18S	1,653	1,966	44.3	12.6
28S	2,922	3,675	38.5	11.0

Assay Class: Eukaryote Total RNA Nano
 Data Path: C:\...ents and Settings\Bioanalyzer\2013-10-16\2013-10-16_007.xad

Created: 10/16/2013 4:57:19 PM
 Modified: 10/16/2013 5:23:51 PM

Electropherogram Summary Continued ...



Overall Results for sample 8 : 23b Total RNA

RNA Area:	437.8	RNA Integrity Number (RIN):	6.4 (B.02.08, Anomaly Threshold(s) manually adapted)
RNA Concentration:	247 ng/μl	Result Flagging Color:	
rRNA Ratio [28s / 18s]:	0.8	Result Flagging Label:	RIN: 6.40

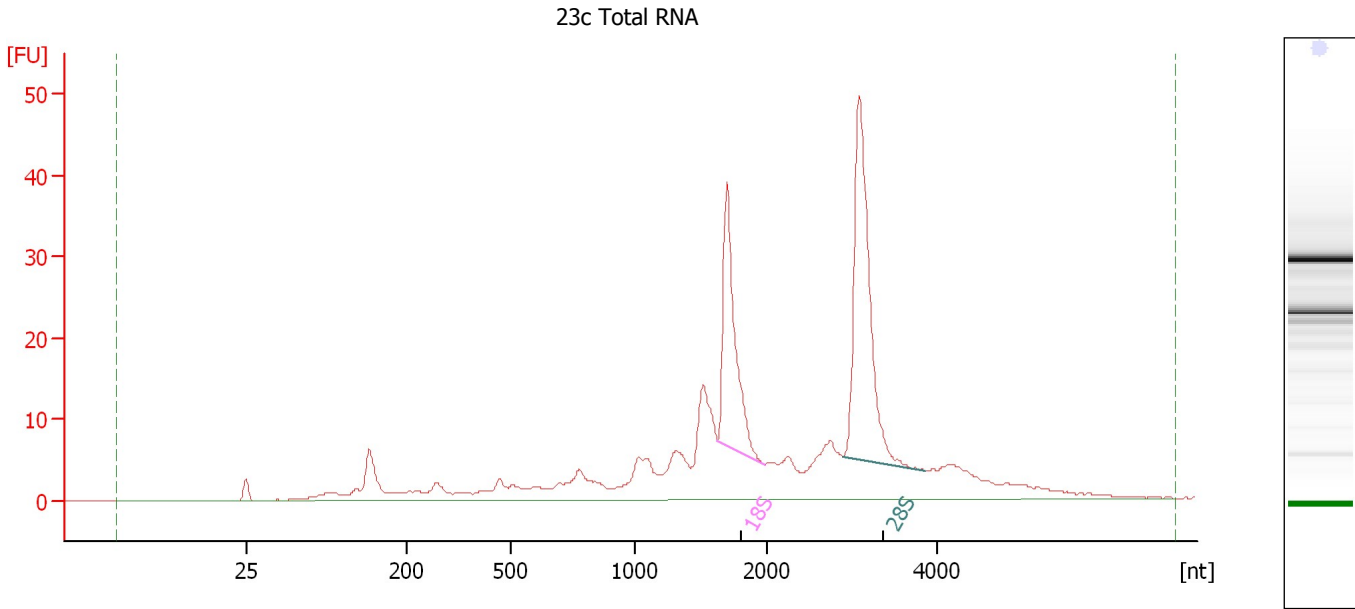
Fragment table for sample 8 : 23b Total RNA

Name	Start Size [nt]	End Size [nt]	Area	% of total Area
18S	1,655	1,930	73.6	16.8
28S	2,967	3,704	56.0	12.8

Assay Class: Eukaryote Total RNA Nano
Data Path: C:\...ents and Settings\Bioanalyzer\2013-10-16\2013-10-16_007.xad

Created: 10/16/2013 4:57:19 PM
Modified: 10/16/2013 5:23:51 PM

Electropherogram Summary Continued ...



Overall Results for sample 9 : 23c Total RNA

RNA Area: 343.6 RNA Integrity Number (RIN): 7.6 (B.02.08)
RNA Concentration: 194 ng/μl Result Flagging Color:
rRNA Ratio [28s / 18s]: 1.6 Result Flagging Label: RIN: 7.60

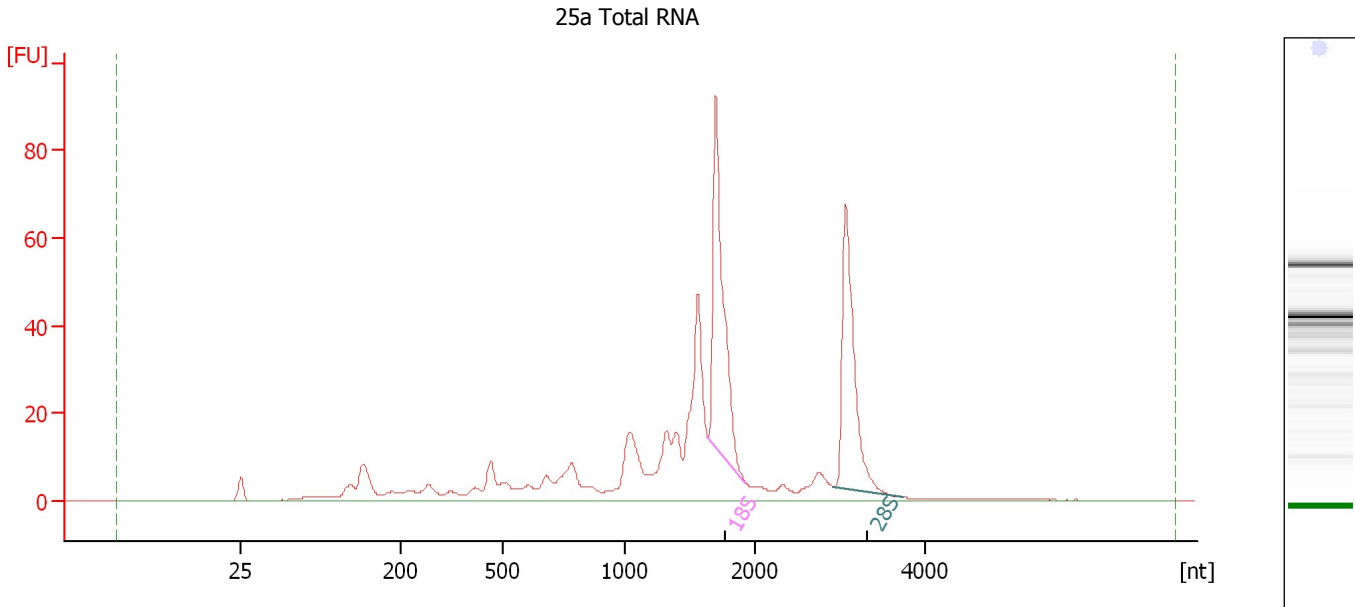
Fragment table for sample 9 : 23c Total RNA

Name	Start Size [nt]	End Size [nt]	Area	% of total Area
18S	1,631	1,987	40.9	11.9
28S	2,905	3,866	67.0	19.5

Assay Class: Eukaryote Total RNA Nano
Data Path: C:\...ents and Settings\Bioanalyzer\2013-10-16\2013-10-16_007.xad

Created: 10/16/2013 4:57:19 PM
Modified: 10/16/2013 5:23:51 PM

Electropherogram Summary Continued ...



Overall Results for sample 10 : 25a Total RNA

RNA Area: 506.0 RNA Integrity Number (RIN): 6.5 (B.02.08, Anomaly Threshold(s) manually adapted)
RNA Concentration: 285 ng/μl
rRNA Ratio [28s / 18s]: 0.8
Result Flagging Color:
Result Flagging Label: RIN: 6.50

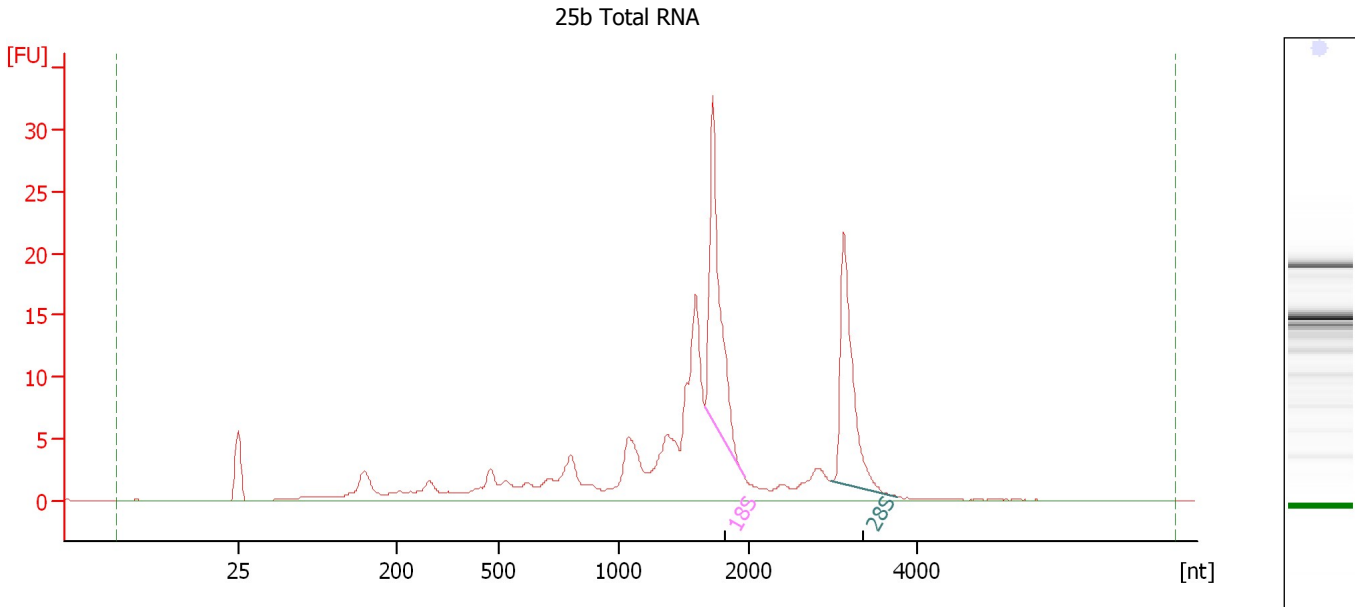
Fragment table for sample 10 : 25a Total RNA

Name	Start Size [nt]	End Size [nt]	Area	% of total Area
18S	1,633	1,920	92.8	18.4
28S	2,911	3,730	76.4	15.1

Assay Class: Eukaryote Total RNA Nano
Data Path: C:\...ents and Settings\Bioanalyzer\2013-10-16\2013-10-16_007.xad

Created: 10/16/2013 4:57:19 PM
Modified: 10/16/2013 5:23:51 PM

Electropherogram Summary Continued ...



Overall Results for sample 11 : 25b Total RNA

RNA Area: 188.7 RNA Integrity Number (RIN): 6.6 (B.02.08, Anomaly Threshold(s) manually adapted)
RNA Concentration: 106 ng/μl
rRNA Ratio [28s / 18s]: 0.9
Result Flagging Color:
Result Flagging Label: RIN: 6.60

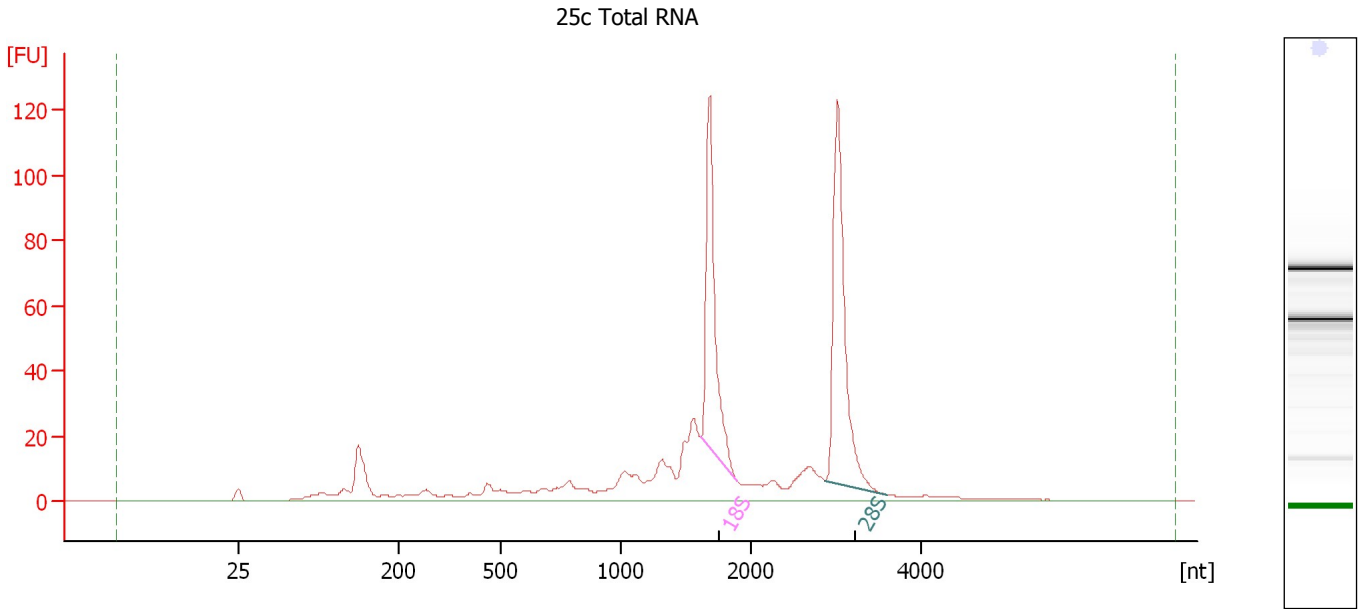
Fragment table for sample 11 : 25b Total RNA

Name	Start Size [nt]	End Size [nt]	Area	% of total Area
18S	1,655	1,959	29.5	15.7
28S	2,978	3,752	25.1	13.3

Assay Class: Eukaryote Total RNA Nano
Data Path: C:\...ents and Settings\Bioanalyzer\2013-10-16\2013-10-16_007.xad

Created: 10/16/2013 4:57:19 PM
Modified: 10/16/2013 5:23:51 PM

Electropherogram Summary Continued ...



Overall Results for sample 12 : 25c Total RNA

RNA Area: 596.4 RNA Integrity Number (RIN): 7.4 (B.02.08)
RNA Concentration: 336 ng/μl Result Flagging Color:
rRNA Ratio [28s / 18s]: 1.3 Result Flagging Label: RIN: 7.40

Fragment table for sample 12 : 25c Total RNA

Name	Start Size [nt]	End Size [nt]	Area	% of total Area
18S	1,615	1,886	101.1	16.9
28S	2,862	3,597	131.8	22.1

Assay Class: Eukaryote Total RNA Nano
Data Path: C:\...ents and Settings\Bioanalyzer\2013-10-16\2013-10-16_007.xad

Created: 10/16/2013 4:57:19 PM
Modified: 10/16/2013 5:23:51 PM

Gel Image

