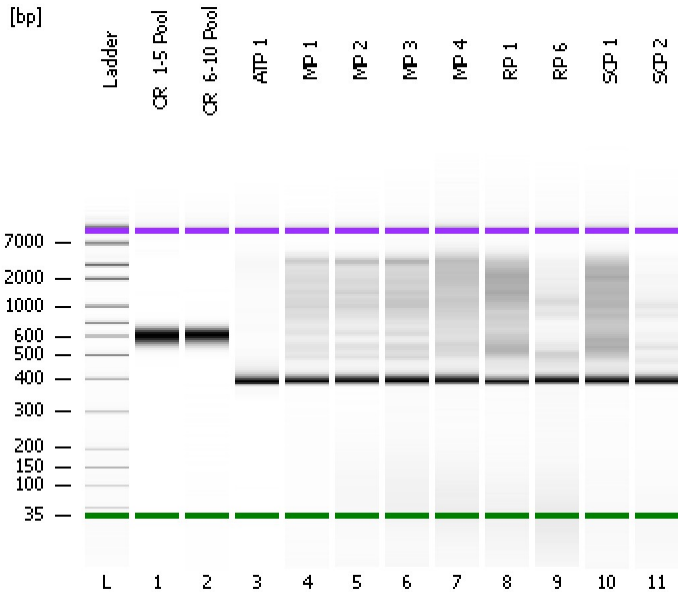


Assay Class: High Sensitivity DNA Assay
Data Path: C:\...ents and Settings\Bioanalyzer\2013-10-17\2013-10-17_001.xad

Created: 10/17/2013 9:24:24 AM
Modified: 10/17/2013 10:06:45 AM

Electrophoresis File Run Summary



Instrument Information:

Instrument Name: DE13701086 Firmware: C.01.069
Serial#: DE13701086 Type: G2938B

Assay Information:

Assay Origin Path: C:\Program Files\Agilent\2100 bioanalyzer\2100 expert\assays\dsDNA\High Sensitivity DNA.xsy
Assay Class: High Sensitivity DNA Assay
Version: 1.03
Assay Comments: Copyright © 2003-2010 Agilent Technologies

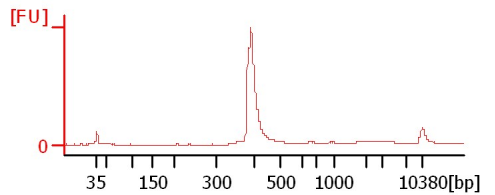
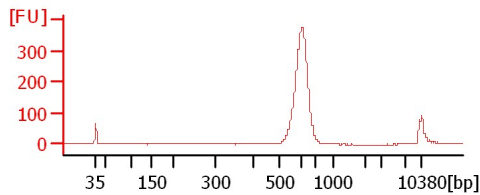
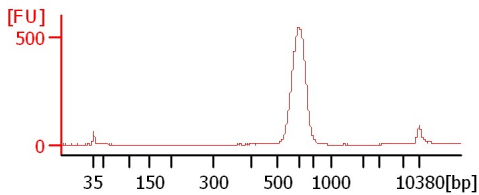
Chip Information:

Chip Lot #: Reagent Kit Lot #: Chip Comments:

OR_1-5 Pool

OR_6-10 Pool

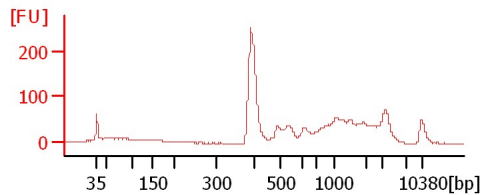
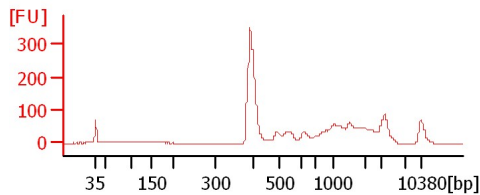
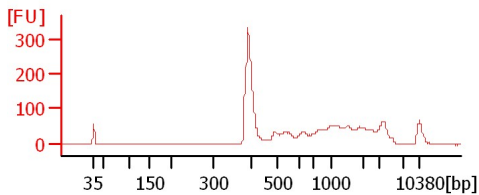
ATP 1



MP 1

MP 2

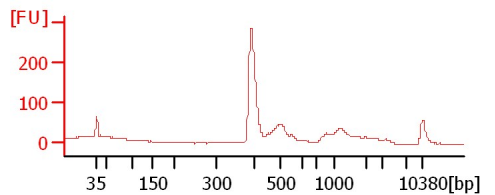
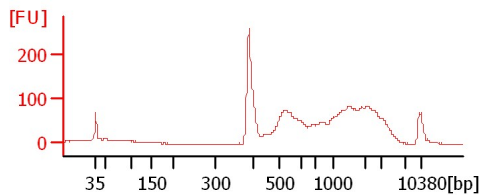
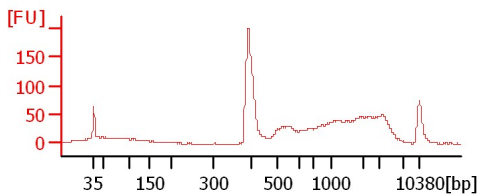
MP 3



MP 4

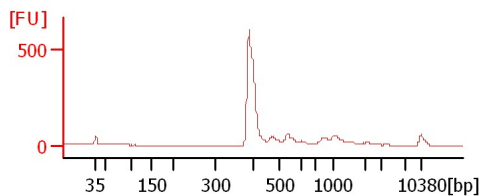
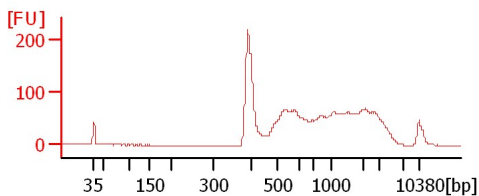
RP 1

RP 6



SCP 1

SCP 2



Assay Class: High Sensitivity DNA Assay
 Data Path: C:\...ents and Settings\Bioanalyzer\2013-10-17\2013-10-17_001.xad

Created: 10/17/2013 9:24:24 AM
 Modified: 10/17/2013 10:06:45 AM

Electrophoresis File Run Summary (Chip Summary)

Sample Name	Sample Comment	Rest. Digest	Status	Observation	Result Label	Result Color
OR_1-5 Pool		<input type="checkbox"/>	✓			
OR_6-10 Pool		<input type="checkbox"/>	✓			
ATP 1		<input type="checkbox"/>	✓			
MP 1		<input type="checkbox"/>	✓			
MP 2		<input type="checkbox"/>	✓			
MP 3		<input type="checkbox"/>	✓			
MP 4		<input type="checkbox"/>	✓			
RP 1		<input type="checkbox"/>	✓			
RP 6		<input type="checkbox"/>	✓			
SCP 1		<input type="checkbox"/>	✓			
SCP 2		<input type="checkbox"/>	✓			
Ladder		<input type="checkbox"/>	✓			

Chip Lot #

Reagent Kit Lot #

Chip Comments :

Assay Class: High Sensitivity DNA Assay
Data Path: C:\...ents and Settings\Bioanalyzer\2013-10-17\2013-10-17_001.xad

Created: 10/17/2013 9:24:24 AM
Modified: 10/17/2013 10:06:45 AM

Electrophoresis Assay Details

General Analysis Settings

Number of Available Sample and Ladder Wells (Max.) : 12
Minimum Visible Range [s] : 32
Maximum Visible Range [s] : 138
Start Analysis Time Range [s] : 33
End Analysis Time Range [s] : 137.5
Ladder Concentration [pg/μl] : 1950
Uses Standard Area for Ladder Fragments
Lower Marker Concentration [pg/μl] : 125
Upper Marker Concentration [pg/μl] : 75
Used Upper Marker for Quantitation
Standard Curve Fit is Point to Point
Show Data Aligned to Lower and Upper Marker

Integrator Settings

Integration Start Time [s] : 33.05
Integration End Time [s] : 137
Slope Threshold : 0.8
Height Threshold [FU] : 5
Area Threshold : 0.1
Width Threshold [s] : 0.6
Baseline Plateau [s] : 0.5

Filter Settings

Filter Width [s] : 0.5
Polynomial Order : 4

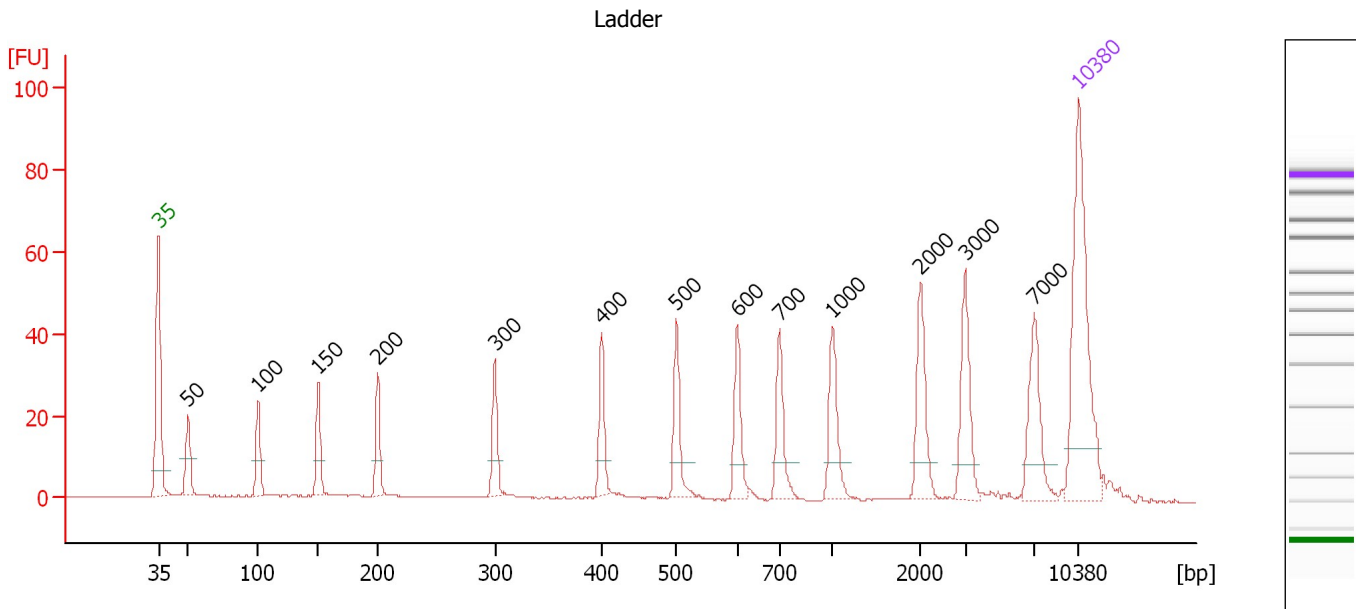
Ladder

Ladder Peak	Size	Area
1	35	160
2	50	210
3	100	208
4	150	221
5	200	242
6	300	270
7	400	305
8	500	306
9	600	336
10	700	321
11	1000	366
12	2000	413
13	3000	411
14	7000	400
15	10380	214

Assay Class: High Sensitivity DNA Assay
 Data Path: C:\...ents and Settings\Bioanalyzer\2013-10-17\2013-10-17_001.xad

Created: 10/17/2013 9:24:24 AM
 Modified: 10/17/2013 10:06:45 AM

Electropherogram Summary



Overall Results for Ladder

Noise: 0.2

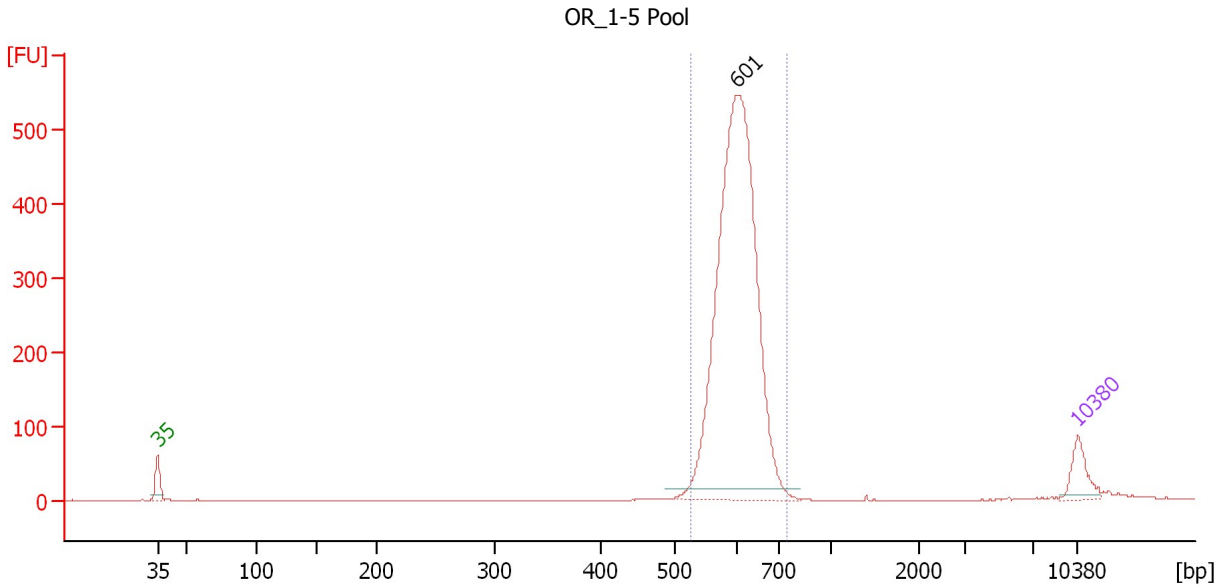
Peak table for Ladder

Peak	Size [bp]	Conc. [pg/μl]	Molarity [pmol/l]	Observations
1	35	125.00	5,411.3	Lower Marker
2	50	150.00	4,545.5	Ladder Peak
3	100	150.00	2,272.7	Ladder Peak
4	150	150.00	1,515.2	Ladder Peak
5	200	150.00	1,136.4	Ladder Peak
6	300	150.00	757.6	Ladder Peak
7	400	150.00	568.2	Ladder Peak
8	500	150.00	454.5	Ladder Peak
9	600	150.00	378.8	Ladder Peak
10	700	150.00	324.7	Ladder Peak
11	1,000	150.00	227.3	Ladder Peak
12	2,000	150.00	113.6	Ladder Peak
13	3,000	150.00	75.8	Ladder Peak
14	7,000	150.00	32.5	Ladder Peak
15	10,380	75.00	10.9	Upper Marker

Assay Class: High Sensitivity DNA Assay
 Data Path: C:\...ents and Settings\Bioanalyzer\2013-10-17\2013-10-17_001.xad

Created: 10/17/2013 9:24:24 AM
 Modified: 10/17/2013 10:06:45 AM

Electropherogram Summary Continued ...



Setpoint Deviations for sample 1 : OR_1-5 Pool

Height Threshold [FU] : 15

Overall Results for sample 1 : OR_1-5 Pool

Number of peaks found: 1 Corr. Area 1: 2,241.1
 Noise: 0.1

Peak table for sample 1 : OR_1-5 Pool

Peak	Size [bp]	Conc. [pg/μl]	Molarity [pmol/l]	Observations
1	35	125.00	5,411.3	Lower Marker
2	601	2,065.95	5,211.4	
3	10,380	75.00	10.9	Upper Marker

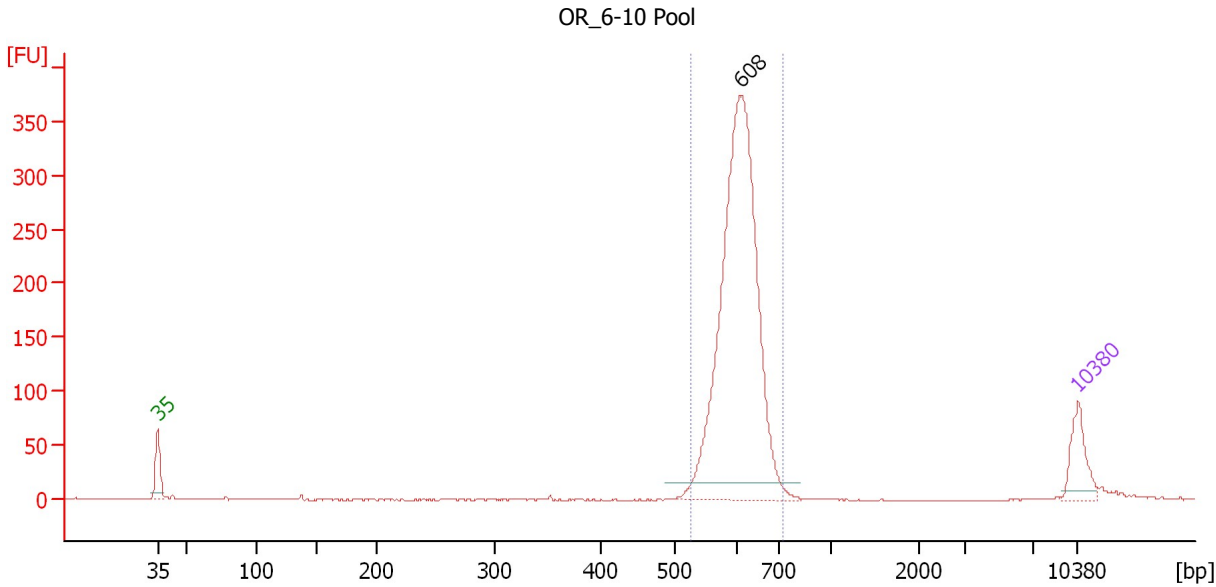
Region table for sample 1 : OR_1-5 Pool

From [bp]	To [bp]	Average Size [bp]	Molarity [pmol/l]	Conc. [pg/μl]	Corr. Area	% of Total	Size distribution in CV [%]	Color
526	744	606	5,214.8	2,079.14	2,241.1	98	5.8	Blue

Assay Class: High Sensitivity DNA Assay
 Data Path: C:\...ents and Settings\Bioanalyzer\2013-10-17\2013-10-17_001.xad

Created: 10/17/2013 9:24:24 AM
 Modified: 10/17/2013 10:06:45 AM

Electropherogram Summary Continued ...



Setpoint Deviations for sample 2 : OR_6-10 Pool

Height Threshold [FU] : 15

Overall Results for sample 2 : OR_6-10 Pool

Number of peaks found: 1 Corr. Area 1: 1,390.8
 Noise: 0.1

Peak table for sample 2 : OR_6-10 Pool

Peak	Size [bp]	Conc. [pg/μl]	Molarity [pmol/l]	Observations
1	35	125.00	5,411.3	Lower Marker
2	608	1,269.59	3,161.9	
3	10,380	75.00	10.9	Upper Marker

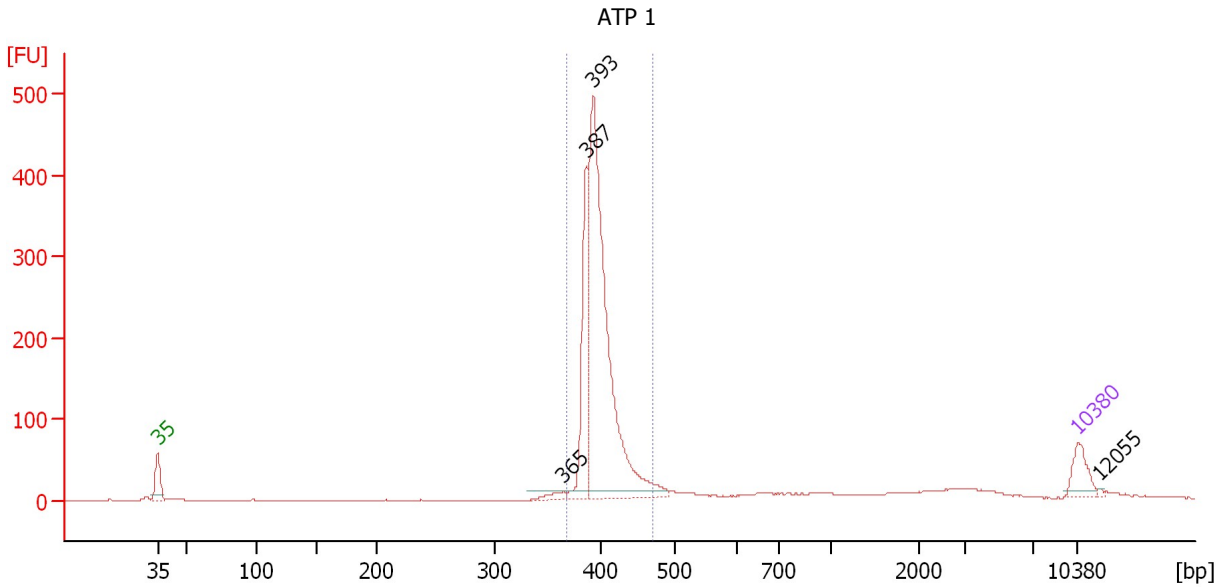
Region table for sample 2 : OR_6-10 Pool

From [bp]	To [bp]	Average Size [bp]	Molarity [pmol/l]	Conc. [pg/μl]	Corr. Area	% of Total	Size distribution in CV [%]	Color
525	726	609	3,165.6	1,268.69	1,390.8	97	5.6	Blue

Assay Class: High Sensitivity DNA Assay
 Data Path: C:\...ents and Settings\Bioanalyzer\2013-10-17\2013-10-17_001.xad

Created: 10/17/2013 9:24:24 AM
 Modified: 10/17/2013 10:06:45 AM

Electropherogram Summary Continued ...



Setpoint Deviations for sample 3 : ATP 1

Height Threshold [FU] : 10

Overall Results for sample 3 : ATP 1

Number of peaks found: 4
 Noise: 0.2
 Corr. Area 1: 1,320.6

Peak table for sample 3 : ATP 1

Peak	Size [bp]	Conc. [pg/μl]	Molarity [pmol/l]	Observations
1	35	125.00	5,411.3	Lower Marker
2	365	33.62	139.7	
3	387	387.43	1,517.0	
4	393	1,438.47	5,546.8	
5	10,380	75.00	10.9	Upper Marker
6	12,055	0.00	0.0	

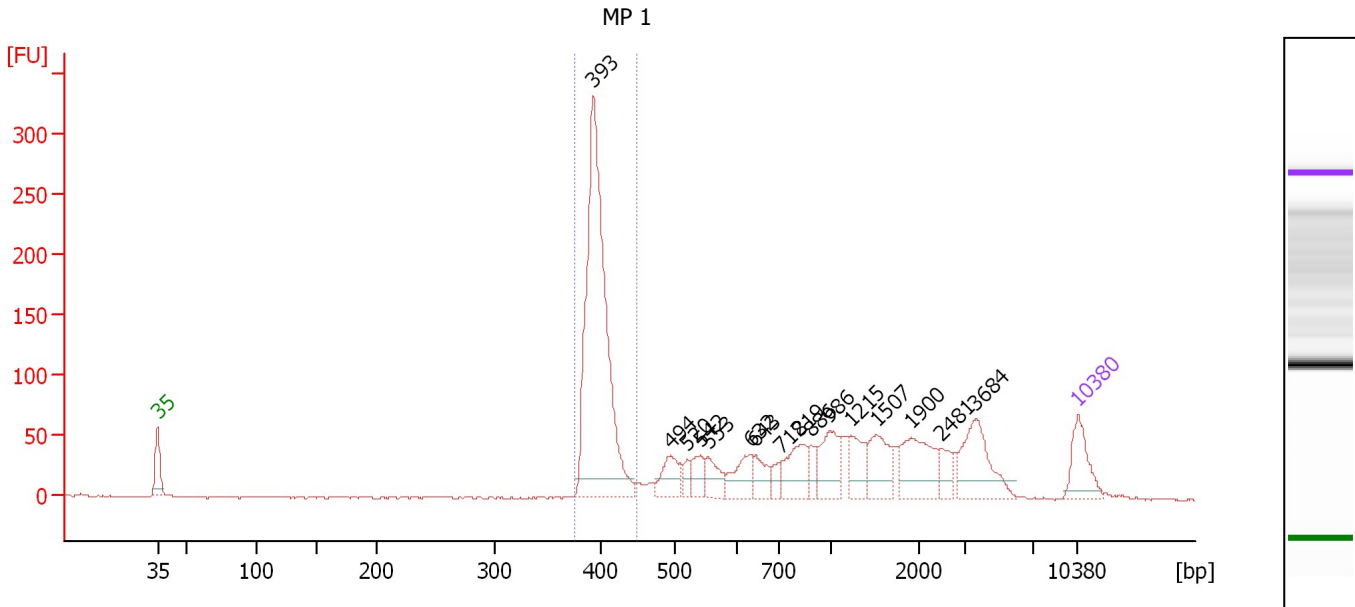
Region table for sample 3 : ATP 1

From [bp]	To [bp]	Average Size [bp]	Molarity [pmol/l]	Conc. [pg/μl]	Corr. Area	% of Total	Size distribution in CV [%]	Color
369	469	401	6,750.4	1,781.39	1,320.6	81	4.3	Blue

Assay Class: High Sensitivity DNA Assay
 Data Path: C:\...ents and Settings\Bioanalyzer\2013-10-17\2013-10-17_001.xad

Created: 10/17/2013 9:24:24 AM
 Modified: 10/17/2013 10:06:45 AM

Electropherogram Summary Continued ...



Setpoint Deviations for sample 4 : MP 1

Height Threshold [FU] : 15

Overall Results for sample 4 : MP 1

Number of peaks found: 16 Corr. Area 1: 746.4
 Noise: 0.5

Peak table for sample 4 : MP 1

Peak	Size [bp]	Conc. [pg/μl]	Molarity [pmol/l]	Observations
1	35	125.00	5,411.3	Lower Marker
2	393	891.00	3,434.7	
3	494	77.26	237.1	
4	520	25.12	73.1	
5	542	49.66	138.9	
6	553	54.40	149.0	
7	632	74.73	179.2	
8	643	51.47	121.2	
9	712	28.94	61.6	
10	819	94.27	174.5	
11	886	35.56	60.8	
12	986	95.83	147.3	
13	1,215	70.00	87.3	
14	1,507	90.46	91.0	
15	1,900	128.25	102.3	
16	2,481	34.67	21.2	
17	3,684	134.96	55.5	
18	10,380	75.00	10.9	Upper Marker

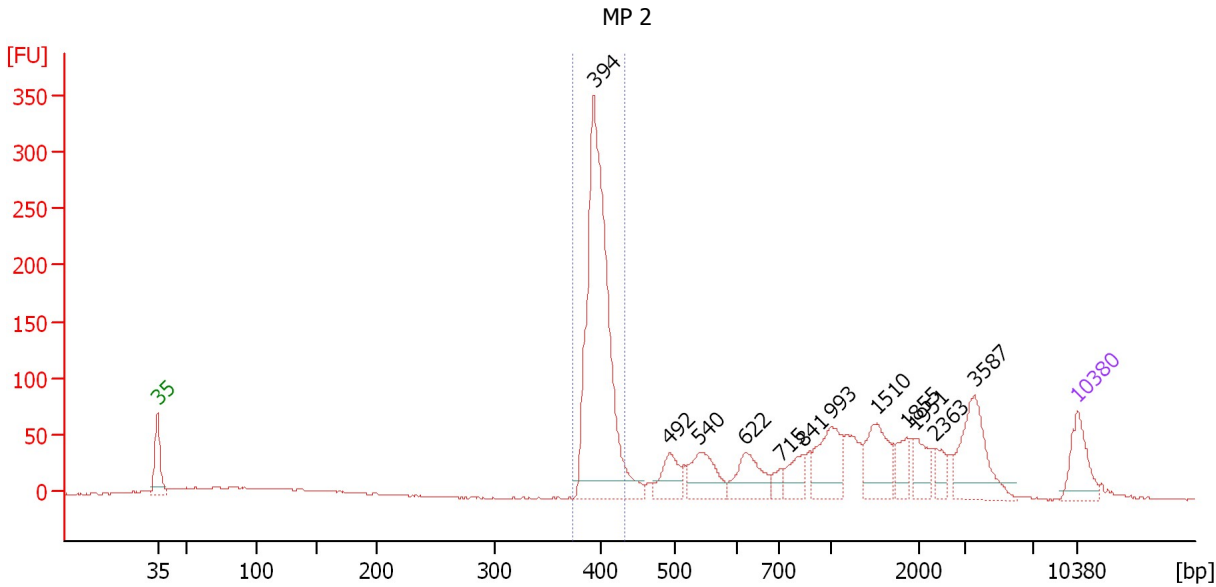
Region table for sample 4 : MP 1

From [bp]	To [bp]	Average Size [bp]	Molarity [pmol/l]	Conc. [pg/μl]	Corr. Area	% of Total	Size distribution in CV [%]	Color
376	449	399	3,388.2	891.08	746.4	39	3.1	Blue

Assay Class: High Sensitivity DNA Assay
 Data Path: C:\...ents and Settings\Bioanalyzer\2013-10-17\2013-10-17_001.xad

Created: 10/17/2013 9:24:24 AM
 Modified: 10/17/2013 10:06:45 AM

Electropherogram Summary Continued ...



Setpoint Deviations for sample 5 : MP 2

Height Threshold [FU] : 15

Overall Results for sample 5 : MP 2

Number of peaks found: 12 Corr. Area 1: 797.0
 Noise: 0.7

Peak table for sample 5 : MP 2

Peak	Size [bp]	Conc. [pg/μl]	Molarity [pmol/l]	Observations
1	35	125.00	5,411.3	Lower Marker
2	394	892.12	3,434.9	
3	492	79.16	243.8	
4	540	111.11	312.0	
5	622	100.21	244.0	
6	715	22.22	47.1	
7	841	53.84	97.1	
8	993	124.42	189.7	
9	1,510	112.54	112.9	
10	1,855	48.89	39.9	
11	1,951	47.39	36.8	
12	2,363	31.45	20.2	
13	3,587	149.89	63.3	
14	10,380	75.00	10.9	Upper Marker

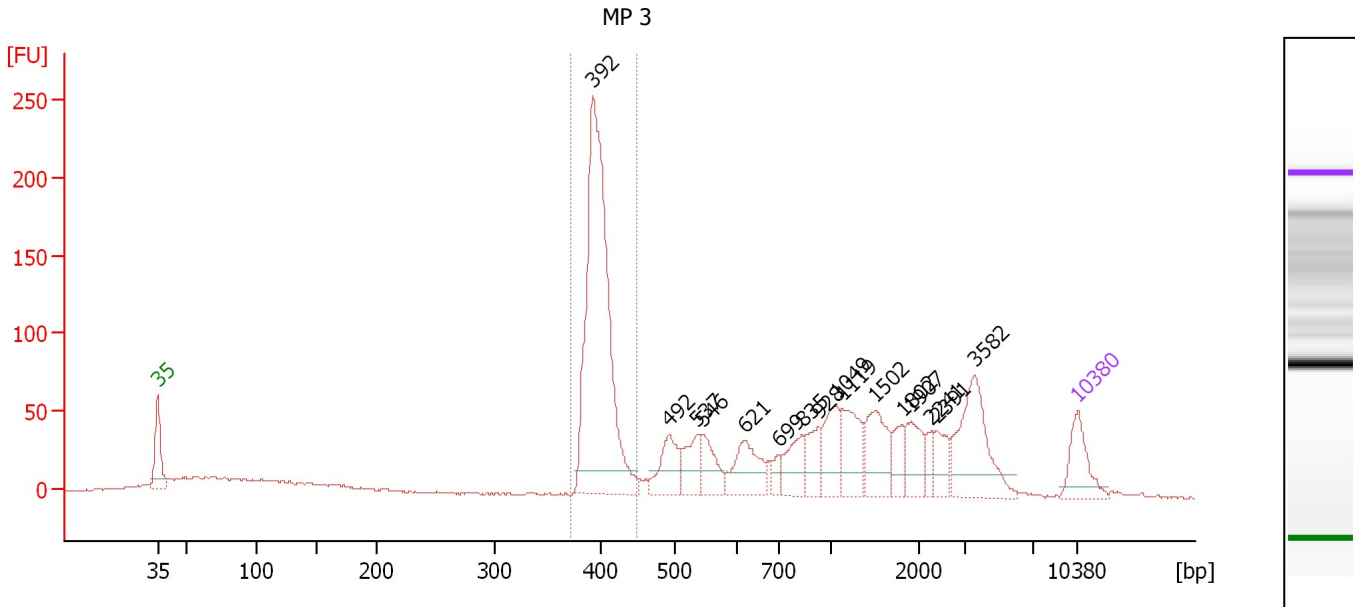
Region table for sample 5 : MP 2

From [bp]	To [bp]	Average Size [bp]	Molarity [pmol/l]	Conc. [pg/μl]	Corr. Area	% of Total	Size distribution in CV [%]	Color
374	431	399	3,166.3	832.64	797.0	38	2.6	Blue

Assay Class: High Sensitivity DNA Assay
 Data Path: C:\...ents and Settings\Bioanalyzer\2013-10-17\2013-10-17_001.xad

Created: 10/17/2013 9:24:24 AM
 Modified: 10/17/2013 10:06:45 AM

Electropherogram Summary Continued ...



Setpoint Deviations for sample 6 : MP 3

Height Threshold [FU] : 15

Overall Results for sample 6 : MP 3

Number of peaks found: 16 Corr. Area 1: 640.8
 Noise: 0.7

Peak table for sample 6 : MP 3

Peak	Size [bp]	Conc. [pg/μl]	Molarity [pmol/l]	Observations
1	35	125.00	5,411.3	Lower Marker
2	392	884.85	3,416.8	
3	492	100.08	307.9	
4	537	78.38	221.3	
5	546	78.94	219.2	
6	621	114.25	278.8	
7	699	29.83	64.7	
8	835	78.49	142.4	
9	928	61.52	100.5	
10	1,049	95.50	138.0	
11	1,119	107.65	145.8	
12	1,502	112.03	113.0	
13	1,802	49.79	41.9	
14	1,907	68.87	54.7	
15	2,241	25.17	17.0	
16	2,391	48.69	30.9	
17	3,582	188.68	79.8	
18	10,380	75.00	10.9	Upper Marker

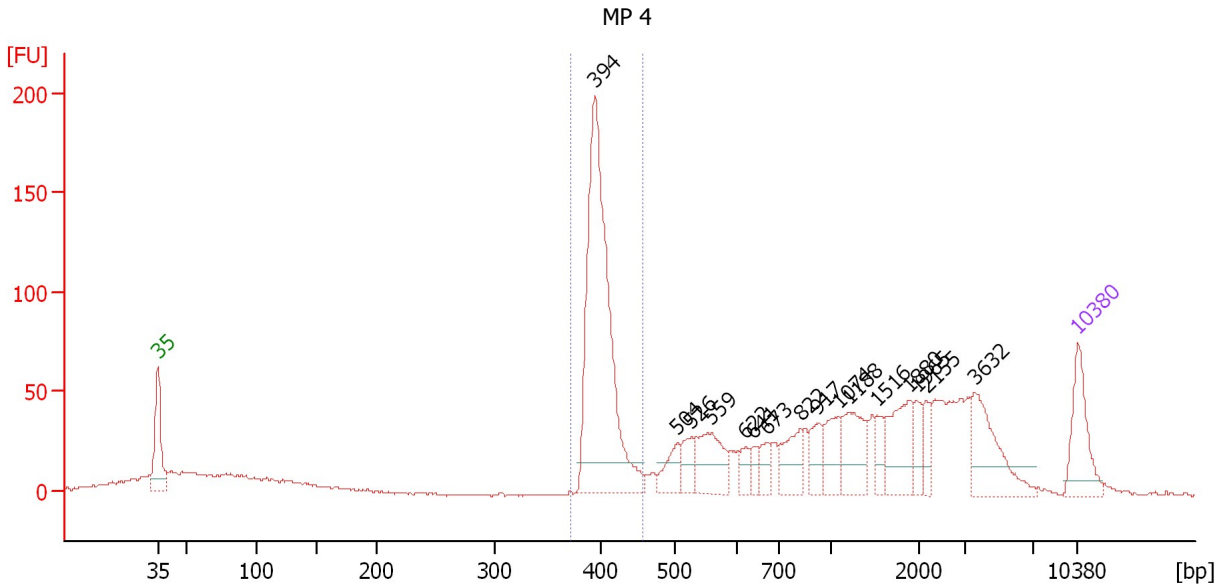
Region table for sample 6 : MP 3

From [bp]	To [bp]	Average Size [bp]	Molarity [pmol/l]	Conc. [pg/μl]	Corr. Area	% of Total	Size distribution in CV [%]	Color
373	449	400	3,314.1	873.60	640.8	32	3.2	Blue

Assay Class: High Sensitivity DNA Assay
 Data Path: C:\...ents and Settings\Bioanalyzer\2013-10-17\2013-10-17_001.xad

Created: 10/17/2013 9:24:24 AM
 Modified: 10/17/2013 10:06:45 AM

Electropherogram Summary Continued ...



Setpoint Deviations for sample 7 : MP 4

Height Threshold [FU] : 15

Overall Results for sample 7 : MP 4

Number of peaks found: 16 Corr. Area 1: 494.6
 Noise: 0.6

Peak table for sample 7 : MP 4

Peak	Size [bp]	Conc. [pg/μl]	Molarity [pmol/l]	Observations
1	35	125.00	5,411.3	Lower Marker
2	394	584.72	2,247.4	
3	504	45.79	137.7	
4	526	39.39	113.4	
5	559	89.13	241.6	
6	622	23.97	58.4	
7	641	18.15	42.9	
8	673	29.75	67.0	
9	822	61.23	112.8	
10	917	41.50	68.6	
11	1,075	50.09	70.6	
12	1,188	79.97	101.9	
13	1,516	25.00	25.0	
14	1,880	82.39	66.4	
15	1,965	27.26	21.0	
16	2,155	24.96	17.5	
17	3,632	101.58	42.4	
18	10,380	75.00	10.9	Upper Marker

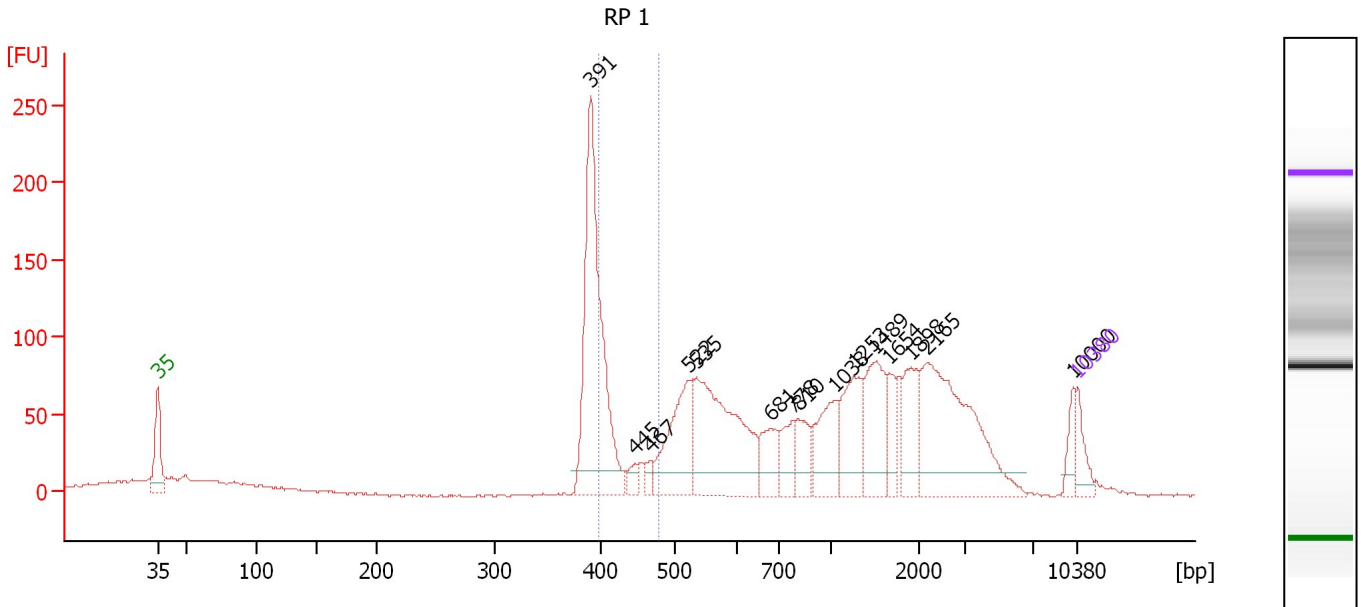
Region table for sample 7 : MP 4

From [bp]	To [bp]	Average Size [bp]	Molarity [pmol/l]	Conc. [pg/μl]	Corr. Area	% of Total	Size distribution in CV [%]	Color
372	457	402	2,210.6	585.83	494.6	28	3.7	Blue

Assay Class: High Sensitivity DNA Assay
 Data Path: C:\...ents and Settings\Bioanalyzer\2013-10-17\2013-10-17_001.xad

Created: 10/17/2013 9:24:24 AM
 Modified: 10/17/2013 10:06:45 AM

Electropherogram Summary Continued ...



Setpoint Deviations for sample 8 : RP 1

Height Threshold [FU] : 15

Overall Results for sample 8 : RP 1

Number of peaks found: 15 Corr. Area 1: 221.7
 Noise: 0.7

Peak table for sample 8 : RP 1

Peak	Size [bp]	Conc. [pg/µl]	Molarity [pmol/l]	Observations
1	35	125.00	5,411.3	Lower Marker
2	391	1,077.83	4,181.2	
3	445	43.96	149.5	
4	467	36.84	119.4	
5	522	390.26	1,133.1	
6	535	725.24	2,053.4	
7	681	149.71	333.1	
8	778	125.96	245.2	
9	810	130.46	244.0	
10	1,038	215.73	314.9	
11	1,253	243.58	294.5	
12	1,489	281.79	286.7	
13	1,654	97.72	89.5	
14	1,898	180.81	144.4	
15	2,165	640.47	448.3	
16	10,000	63.34	9.6	
17	10,380	75.00	10.9	Upper Marker

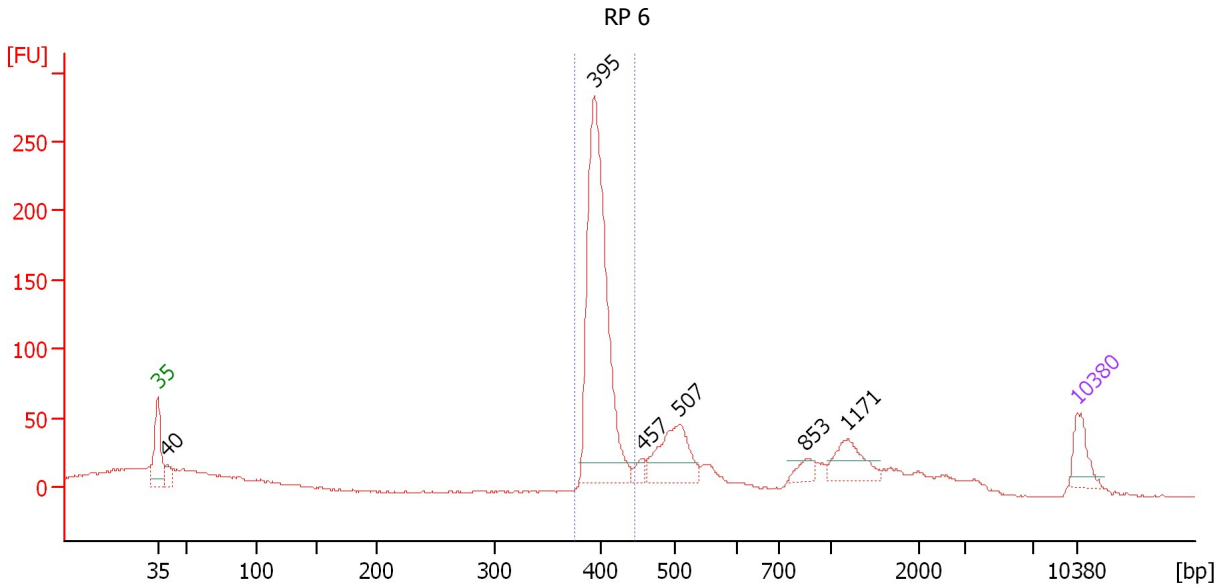
Region table for sample 8 : RP 1

From [bp]	To [bp]	Average Size [bp]	Molarity [pmol/l]	Conc. [pg/µl]	Corr. Area	% of Total	Size distribution in CV [%]	Color
398	479	423	1,761.9	491.81	221.7	8	6.0	Blue

Assay Class: High Sensitivity DNA Assay
 Data Path: C:\...ents and Settings\Bioanalyzer\2013-10-17\2013-10-17_001.xad

Created: 10/17/2013 9:24:24 AM
 Modified: 10/17/2013 10:06:45 AM

Electropherogram Summary Continued ...



Setpoint Deviations for sample 9 : RP 6

Height Threshold [FU] : 15

Overall Results for sample 9 : RP 6

Number of peaks found: 6 Corr. Area 1: 658.9
 Noise: 0.9

Peak table for sample 9 : RP 6

Peak	Size [bp]	Conc. [pg/μl]	Molarity [pmol/l]	Observations
1	35	125.00	5,411.3	Lower Marker
2	40	57.92	2,201.2	
3	395	1,130.66	4,342.2	
4	457	35.31	117.1	
5	507	250.39	748.1	
6	853	44.14	78.4	
7	1,171	121.65	157.5	
8	10,380	75.00	10.9	Upper Marker

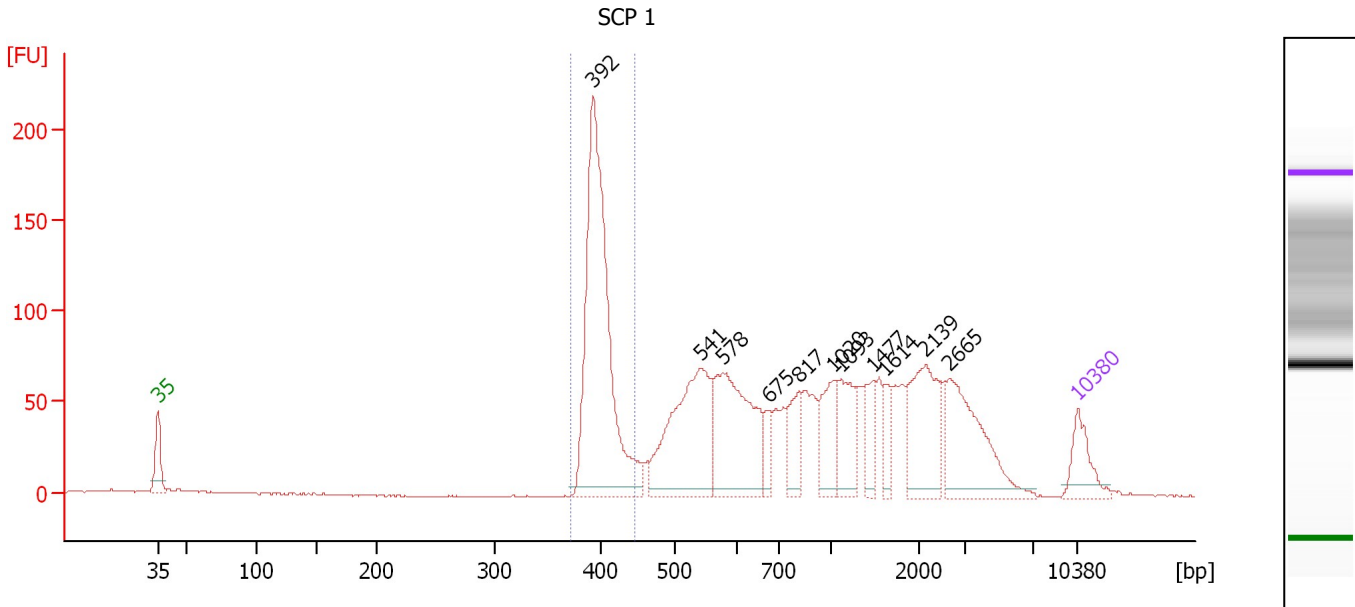
Region table for sample 9 : RP 6

From [bp]	To [bp]	Average Size [bp]	Molarity [pmol/l]	Conc. [pg/μl]	Corr. Area	% of Total	Size distribution in CV [%]	Color
376	446	400	4,537.5	1,196.93	658.9	40	3.1	Blue

Assay Class: High Sensitivity DNA Assay
 Data Path: C:\...ents and Settings\Bioanalyzer\2013-10-17\2013-10-17_001.xad

Created: 10/17/2013 9:24:24 AM
 Modified: 10/17/2013 10:06:45 AM

Electropherogram Summary Continued ...



Overall Results for sample 10 : SCP 1

Number of peaks found: 11 Corr. Area 1: 528.4
 Noise: 0.4

Peak table for sample 10 : SCP 1

Peak	Size [bp]	Conc. [pg/μl]	Molarity [pmol/l]	Observations
1	35	125.00	5,411.3	Lower Marker
2	392	854.18	3,298.6	
3	541	436.19	1,220.9	
4	578	363.96	954.8	
5	675	48.31	108.4	
6	817	94.76	175.8	
7	1,020	118.37	175.8	
8	1,093	129.82	180.0	
9	1,477	68.21	70.0	
10	1,614	47.10	44.2	
11	2,139	197.48	139.9	
12	2,665	231.93	131.8	
13	10,380	75.00	10.9	Upper Marker

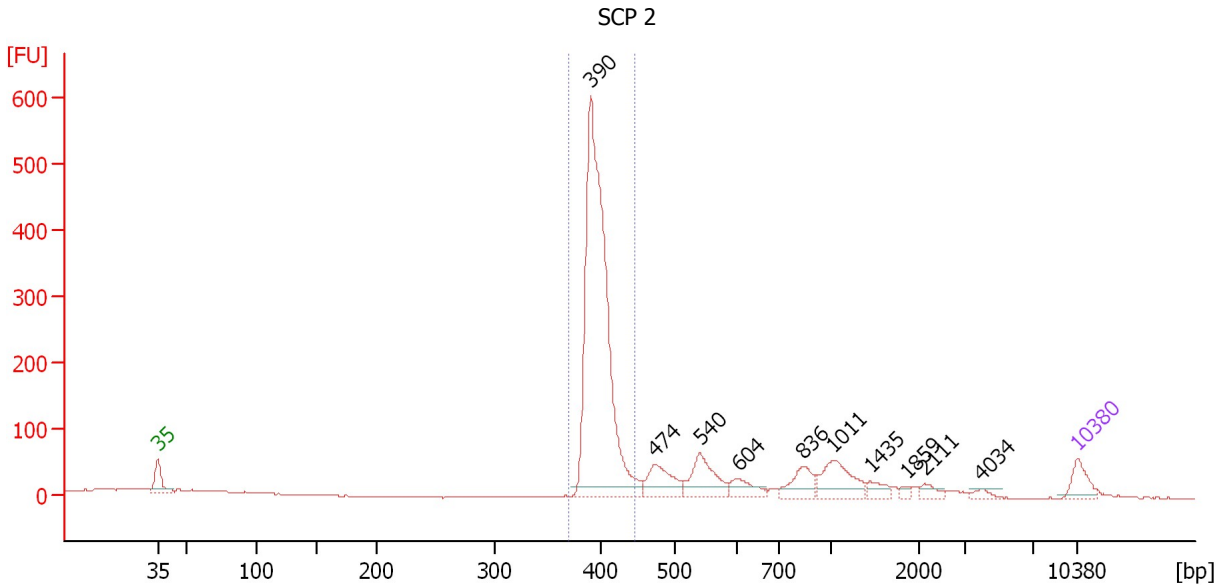
Region table for sample 10 : SCP 1

From [bp]	To [bp]	Average Size [bp]	Molarity [pmol/l]	Conc. [pg/μl]	Corr. Area	% of Total	Size distribution in CV [%]	Color
372	447	400	3,112.0	821.00	528.4	24	3.4	Blue

Assay Class: High Sensitivity DNA Assay
 Data Path: C:\...ents and Settings\Bioanalyzer\2013-10-17\2013-10-17_001.xad

Created: 10/17/2013 9:24:24 AM
 Modified: 10/17/2013 10:06:45 AM

Electropherogram Summary Continued ...



Setpoint Deviations for sample 11 : SCP 2

Height Threshold [FU] : 15

Overall Results for sample 11 : SCP 2

Number of peaks found: 10 Corr. Area 1: 1,396.5
 Noise: 0.7

Peak table for sample 11 : SCP 2

Peak	Size [bp]	Conc. [pg/μl]	Molarity [pmol/l]	Observations
1	35	125.00	5,411.3	Lower Marker
2	390	2,059.85	7,995.1	
3	474	191.22	611.4	
4	540	218.02	611.3	
5	604	90.98	228.1	
6	836	123.69	224.1	
7	1,011	189.44	283.8	
8	1,435	48.51	51.2	
9	1,859	18.09	14.7	
10	2,111	31.71	22.8	
11	4,034	22.41	8.4	
12	10,380	75.00	10.9	Upper Marker

Region table for sample 11 : SCP 2

From [bp]	To [bp]	Average Size [bp]	Molarity [pmol/l]	Conc. [pg/μl]	Corr. Area	% of Total	Size distribution in CV [%]	Color
371	447	399	7,630.0	2,007.89	1,396.5	56	3.1	Blue

Assay Class: High Sensitivity DNA Assay
Data Path: C:\...ents and Settings\Bioanalyzer\2013-10-17\2013-10-17_001.xad

Created: 10/17/2013 9:24:24 AM
Modified: 10/17/2013 10:06:45 AM

Gel Image

