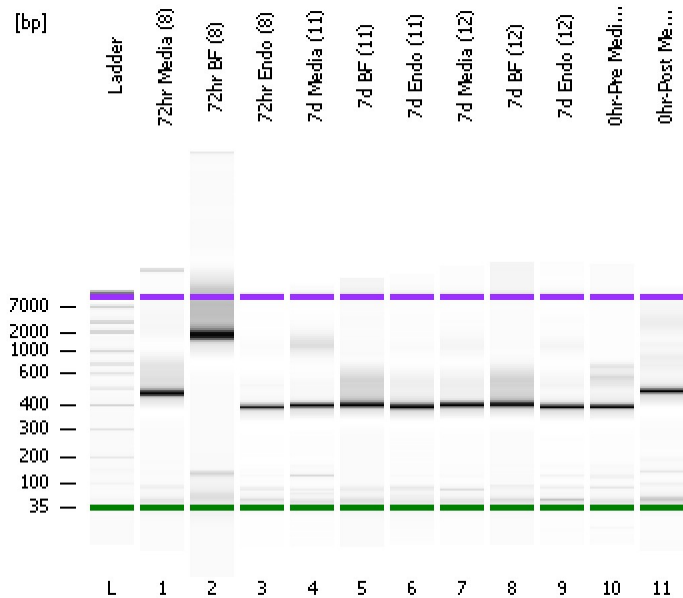


Assay Class: High Sensitivity DNA Assay
Data Path: C:\...ents and Settings\Bioanalyzer\2013-10-17\2013-10-17_002.xad

Created: 10/17/2013 10:25:32 AM
Modified: 10/17/2013 11:15:22 AM

Electrophoresis File Run Summary



Instrument Information:

Instrument Name: DE13701086 Firmware: C.01.069
Serial#: DE13701086 Type: G2938B

Assay Information:

Assay Origin Path: C:\Program Files\Agilent\2100 bioanalyzer\2100 expert\assays\dsDNA\High Sensitivity DNA.xsy
Assay Class: High Sensitivity DNA Assay
Version: 1.03
Assay Comments: Copyright © 2003-2010 Agilent Technologies

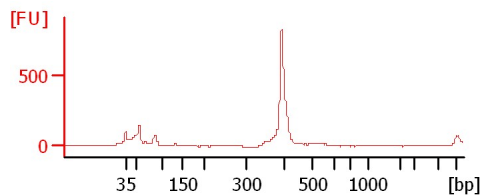
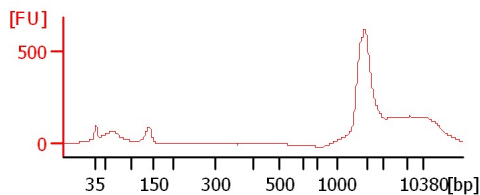
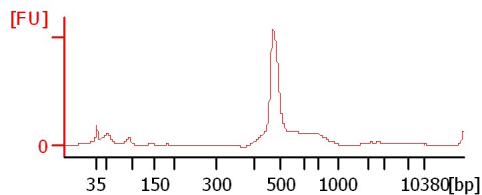
Chip Information:

Chip Lot #:
Reagent Kit Lot #:
Chip Comments:

72hr Media (8)

72hr BF (8)

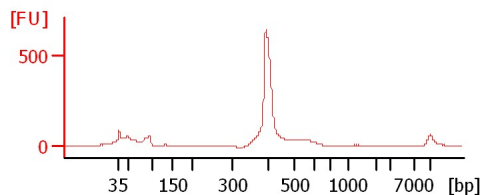
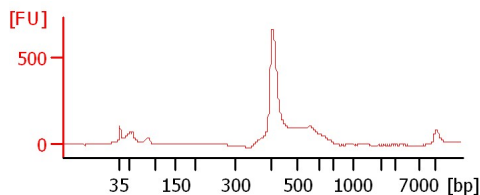
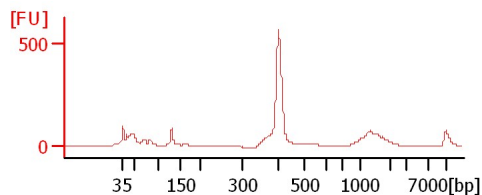
72hr Endo (8)



7d Media (11)

7d BF (11)

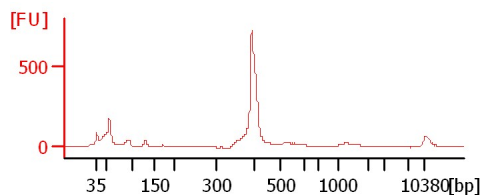
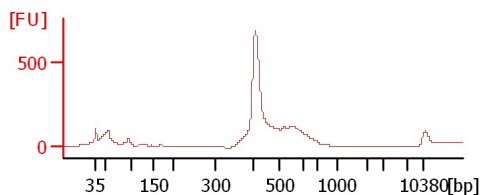
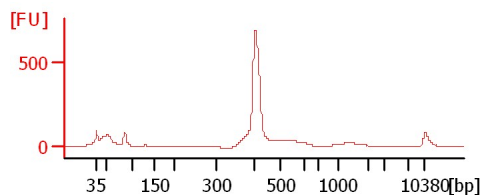
7d Endo (11)



7d Media (12)

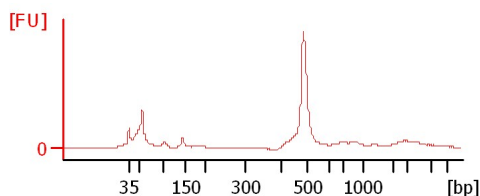
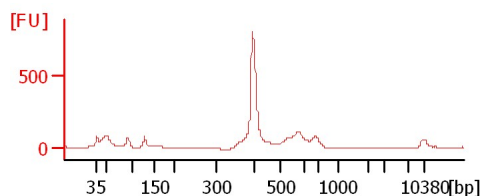
7d BF (12)

7d Endo (12)



0hr-Pre Media (18) V

0hr-Post Media (18) V



Assay Class: High Sensitivity DNA Assay
 Data Path: C:\...ents and Settings\Bioanalyzer\2013-10-17\2013-10-17_002.xad

Created: 10/17/2013 10:25:32 AM
 Modified: 10/17/2013 11:15:22 AM

Electrophoresis File Run Summary (Chip Summary)

Sample Name	Sample Comment	Rest. Digest	Status	Observation	Result Label	Result Color
72hr Media (8)		<input type="checkbox"/>	✓			
72hr BF (8)		<input type="checkbox"/>	✓			
72hr Endo (8)		<input type="checkbox"/>	✓			
7d Media (11)		<input type="checkbox"/>	✓			
7d BF (11)		<input type="checkbox"/>	✓			
7d Endo (11)		<input type="checkbox"/>	✓			
7d Media (12)		<input type="checkbox"/>	✓			
7d BF (12)		<input type="checkbox"/>	✓			
7d Endo (12)		<input type="checkbox"/>	✓			
0hr-Pre Media (18) V		<input type="checkbox"/>	✓			
0hr-Post Media (18) V		<input type="checkbox"/>	✓			
Ladder		<input type="checkbox"/>	✓			

Chip Lot #

Reagent Kit Lot #

Chip Comments :

Assay Class: High Sensitivity DNA Assay
 Data Path: C:\...ents and Settings\Bioanalyzer\2013-10-17\2013-10-17_002.xad

Created: 10/17/2013 10:25:32 AM
 Modified: 10/17/2013 11:15:22 AM

Electrophoresis Assay Details

General Analysis Settings

Number of Available Sample and Ladder Wells (Max.) : 12
 Minimum Visible Range [s] : 32
 Maximum Visible Range [s] : 138
 Start Analysis Time Range [s] : 33
 End Analysis Time Range [s] : 137.5
 Ladder Concentration [pg/μl] : 1950
 Uses Standard Area for Ladder Fragments
 Lower Marker Concentration [pg/μl] : 125
 Upper Marker Concentration [pg/μl] : 75
 Used Upper Marker for Quantitation
 Standard Curve Fit is Point to Point
 Show Data Aligned to Lower and Upper Marker

Integrator Settings

Integration Start Time [s] : 33.05
 Integration End Time [s] : 137
 Slope Threshold : 0.8
 Height Threshold [FU] : 5
 Area Threshold : 0.1
 Width Threshold [s] : 0.6
 Baseline Plateau [s] : 0.5

Filter Settings

Filter Width [s] : 0.5
 Polynomial Order : 4

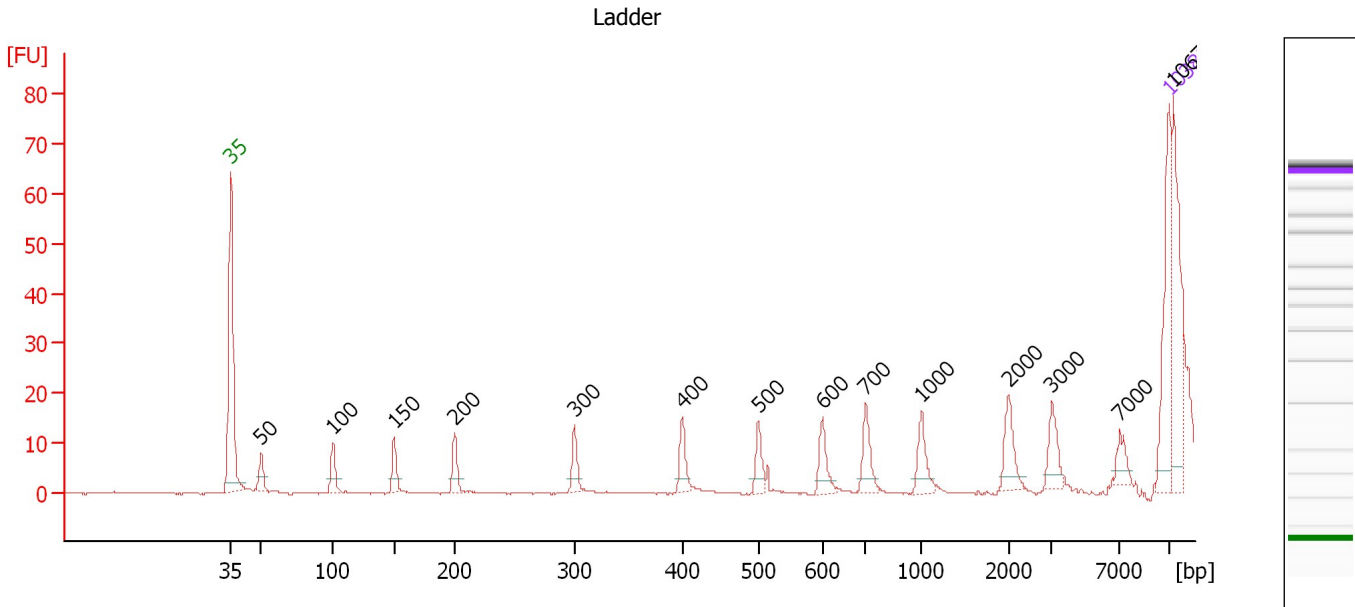
Ladder

Ladder Peak	Size	Area
1	35	160
2	50	210
3	100	208
4	150	221
5	200	242
6	300	270
7	400	305
8	500	306
9	600	336
10	700	321
11	1000	366
12	2000	413
13	3000	411
14	7000	400
15	10380	214

Assay Class: High Sensitivity DNA Assay
 Data Path: C:\...ents and Settings\Bioanalyzer\2013-10-17\2013-10-17_002.xad

Created: 10/17/2013 10:25:32 AM
 Modified: 10/17/2013 11:15:22 AM

Electropherogram Summary



Overall Results for Ladder

Noise: 0.2

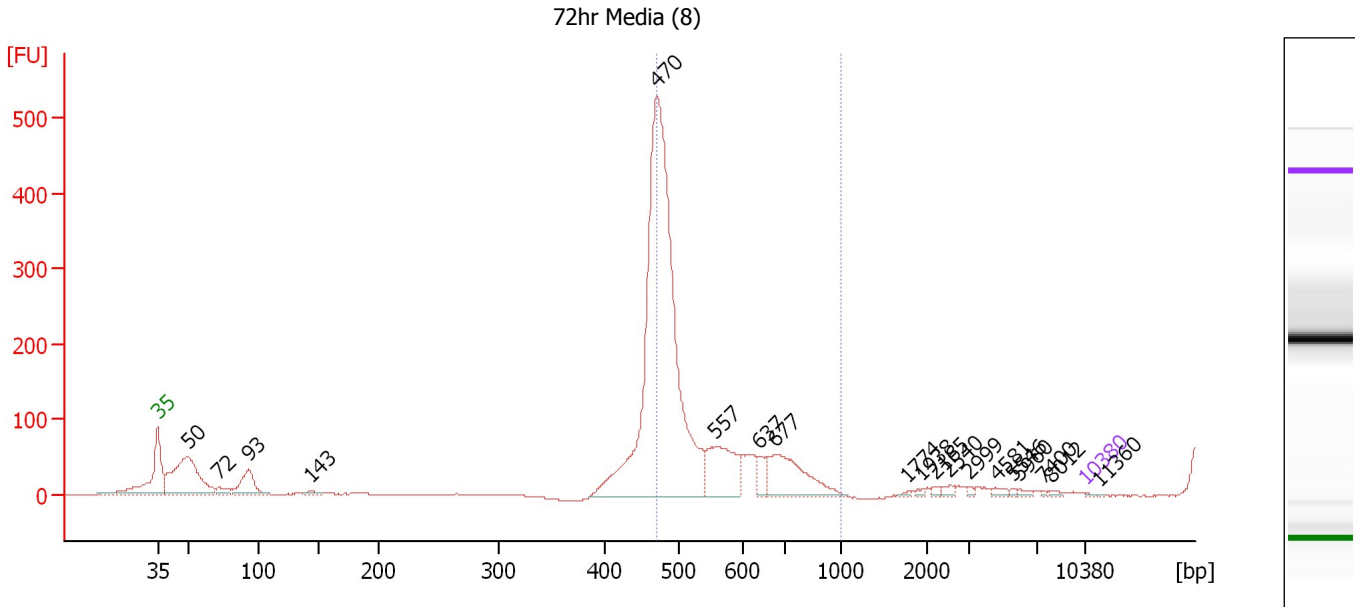
Peak table for Ladder

Peak	Size [bp]	Conc. [pg/μl]	Molarity [pmol/l]	Observations
1	35	125.00	5,411.3	Lower Marker
2	50	150.00	4,545.5	Ladder Peak
3	100	150.00	2,272.7	Ladder Peak
4	150	150.00	1,515.2	Ladder Peak
5	200	150.00	1,136.4	Ladder Peak
6	300	150.00	757.6	Ladder Peak
7	400	150.00	568.2	Ladder Peak
8	500	150.00	454.5	Ladder Peak
9	600	150.00	378.8	Ladder Peak
10	700	150.00	324.7	Ladder Peak
11	1,000	150.00	227.3	Ladder Peak
12	2,000	150.00	113.6	Ladder Peak
13	3,000	150.00	75.8	Ladder Peak
14	7,000	150.00	32.5	Ladder Peak
15	10,380	75.00	10.9	Upper Marker
16	10,674	0.00	0.0	

Assay Class: High Sensitivity DNA Assay
 Data Path: C:\...ents and Settings\Bioanalyzer\2013-10-17\2013-10-17_002.xad

Created: 10/17/2013 10:25:32 AM
 Modified: 10/17/2013 11:15:22 AM

Electropherogram Summary Continued ...



Setpoint Deviations for sample 1 : 72hr Media (8)

Height Threshold [FU] : 2

Overall Results for sample 1 : 72hr Media (8)

Number of peaks found: 19 Corr. Area 1: 884.1
 Noise: 0.2


Peak table for sample 1 : 72hr Media (8)

Peak	Size [bp]	Conc. [pg/µl]	Molarity [pmol/l]	Observations
1	35	125.00	5,411.3	Lower Marker
2	50	15,909.61	482,955.8	
3	72	1,100.05	23,117.4	
4	93	4,663.91	75,913.6	
5	143	373.74	3,957.4	
6	470	72,293.52	232,961.2	
7	557	8,215.64	22,354.5	
8	637	1,620.83	3,855.0	
9	677	8,876.36	19,871.0	
10	1,774	148.16	126.5	
11	1,938	199.55	156.0	
12	2,165	326.91	228.8	
13	2,540	438.52	261.6	
14	2,999	217.68	110.0	
15	4,581	451.47	149.3	
16	5,546	180.98	49.4	
17	5,960	291.88	74.2	
18	7,400	124.40	25.5	
19	8,012	195.61	37.0	
20	10,380	75.00	10.9	Upper Marker
21	11,360	0.00	0.0	

Assay Class: High Sensitivity DNA Assay
Data Path: C:\...ents and Settings\Bioanalyzer\2013-10-17\2013-10-17_002.xad

Created: 10/17/2013 10:25:32 AM
Modified: 10/17/2013 11:15:22 AM

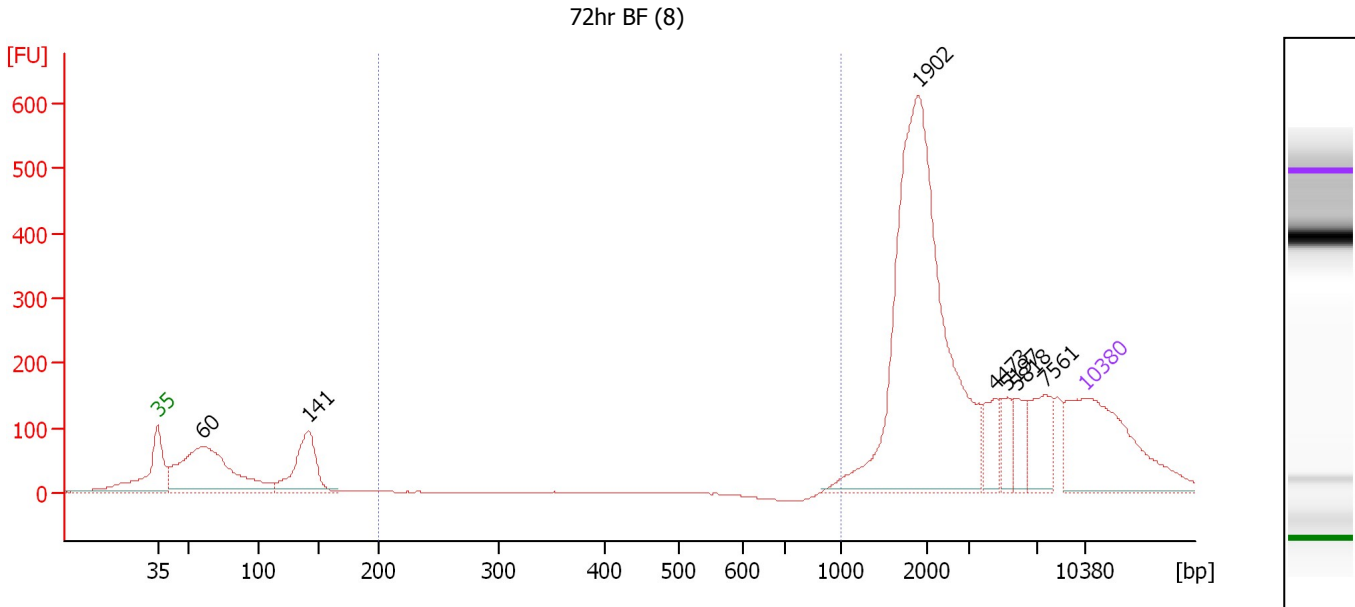
Electropherogram Summary Continued ...**... Region table for sample 1 : 72hr Media (8)**

From [bp]	To [bp]	Average Size [bp]	Molarity [pmol/l]	Conc. [pg/μl]	Corr. Area	% of Total	Size distribution in CV [%]	Co lor
471	1,000	495	117,494.1	38,185.57	884.1	58	7.2	

Assay Class: High Sensitivity DNA Assay
 Data Path: C:\...ents and Settings\Bioanalyzer\2013-10-17\2013-10-17_002.xad

Created: 10/17/2013 10:25:32 AM
 Modified: 10/17/2013 11:15:22 AM

Electropherogram Summary Continued ...



Overall Results for sample 2 : 72hr BF (8)

Number of peaks found: 7 Corr. Area 1: 2.3
 Noise: 0.5

Peak table for sample 2 : 72hr BF (8)

Peak	Size [bp]	Conc. [pg/μl]	Molarity [pmol/l]	Observations
1	35	125.00	5,411.3	Lower Marker
2	60	111.61	2,799.8	
3	141	51.36	553.6	
4	1,902	253.36	201.8	
5	4,473	17.56	5.9	
6	5,197	12.61	3.7	
7	5,818	14.25	3.7	
8	7,561	26.74	5.4	
9	10,380	75.00	10.9	Upper Marker

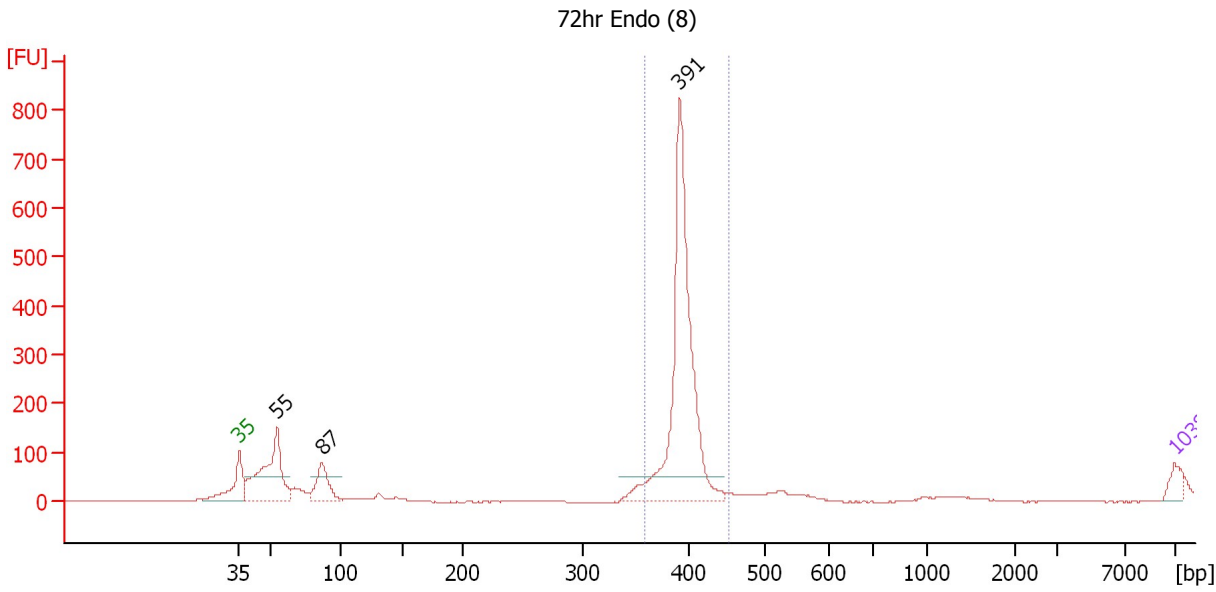
Region table for sample 2 : 72hr BF (8)

From [bp]	To [bp]	Average Size [bp]	Molarity [pmol/l]	Conc. [pg/μl]	Corr. Area	% of Total	Size distribution in CV [%]	Color
200	1,000	982	0.5	0.31	2.3	0	1.2	Blue

Assay Class: High Sensitivity DNA Assay
 Data Path: C:\...ents and Settings\Bioanalyzer\2013-10-17\2013-10-17_002.xad

Created: 10/17/2013 10:25:32 AM
 Modified: 10/17/2013 11:15:22 AM

Electropherogram Summary Continued ...



Setpoint Deviations for sample 3 : 72hr Endo (8)

Height Threshold [FU] : 50

Overall Results for sample 3 : 72hr Endo (8)

Number of peaks found: 3 Corr. Area 1: 1,455.6
 Noise: 0.5

Peak table for sample 3 : 72hr Endo (8)

Peak	Size [bp]	Conc. [pg/μl]	Molarity [pmol/l]	Observations
1	35	125.00	5,411.3	Lower Marker
2	55	1,183.53	32,441.7	
3	87	409.85	7,148.9	
4	391	2,529.18	9,800.7	
5	10,380	75.00	10.9	Upper Marker

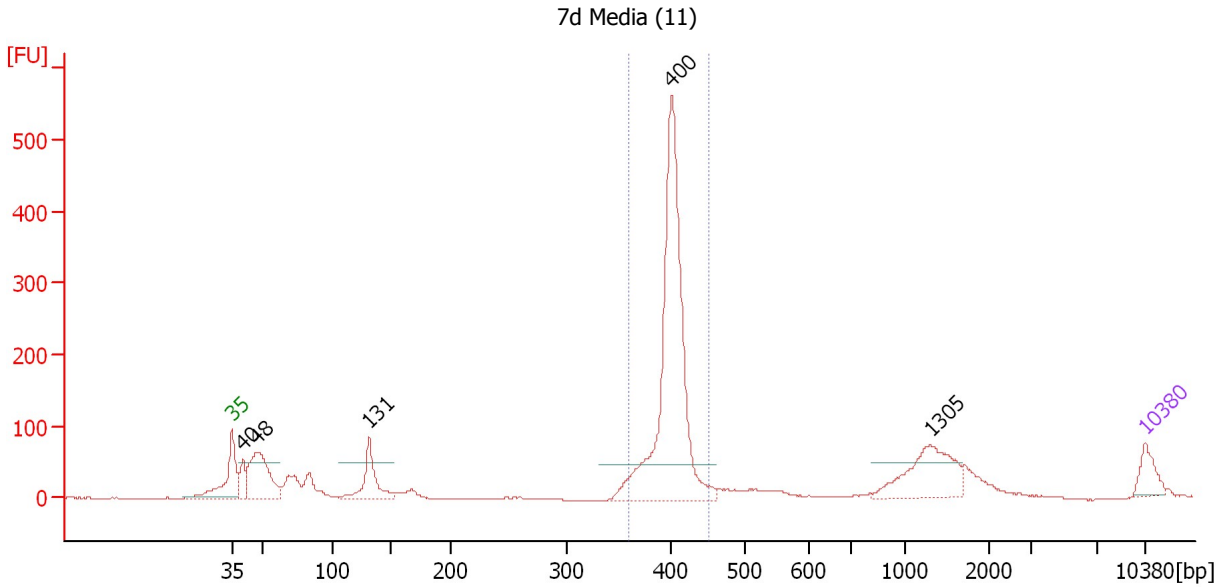
Region table for sample 3 : 72hr Endo (8)

From [bp]	To [bp]	Average Size [bp]	Molarity [pmol/l]	Conc. [pg/μl]	Corr. Area	% of Total	Size distribution in CV [%]	Color
359	453	394	8,405.7	2,183.96	1,455.6	66	2.7	Blue

Assay Class: High Sensitivity DNA Assay
 Data Path: C:\...ents and Settings\Bioanalyzer\2013-10-17\2013-10-17_002.xad

Created: 10/17/2013 10:25:32 AM
 Modified: 10/17/2013 11:15:22 AM

Electropherogram Summary Continued ...



Setpoint Deviations for sample 4 : 7d Media (11)

Height Threshold [FU] : 50

Overall Results for sample 4 : 7d Media (11)

Number of peaks found: 5 Corr. Area 1: 1,275.5
 Noise: 0.2

Peak table for sample 4 : 7d Media (11)

Peak	Size [bp]	Conc. [pg/μl]	Molarity [pmol/l]	Observations
1	35	125.00	5,411.3	Lower Marker
2	40	107.86	4,044.1	
3	48	490.70	15,581.7	
4	131	265.16	3,057.6	
5	400	1,615.60	6,118.6	
6	1,305	315.04	365.8	
7	10,380	75.00	10.9	Upper Marker

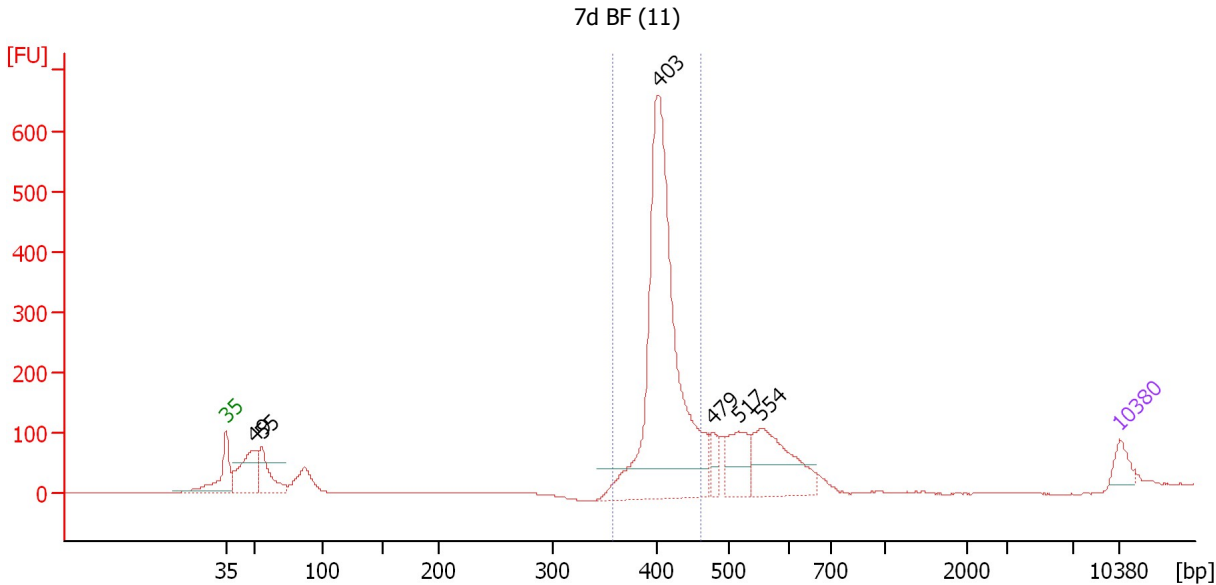
Region table for sample 4 : 7d Media (11)

From [bp]	To [bp]	Average Size [bp]	Molarity [pmol/l]	Conc. [pg/μl]	Corr. Area	% of Total	Size distribution in CV [%]	Color
359	451	401	5,771.8	1,525.72	1,275.4	51	3.6	Blue

Assay Class: High Sensitivity DNA Assay
 Data Path: C:\...ents and Settings\Bioanalyzer\2013-10-17\2013-10-17_002.xad

Created: 10/17/2013 10:25:32 AM
 Modified: 10/17/2013 11:15:22 AM

Electropherogram Summary Continued ...



Setpoint Deviations for sample 5 : 7d BF (11)

Height Threshold [FU] : 50

Overall Results for sample 5 : 7d BF (11)

Number of peaks found: 6 Corr. Area 1: 1,979.1
 Noise: 0.3

Peak table for sample 5 : 7d BF (11)

Peak	Size [bp]	Conc. [pg/µl]	Molarity [pmol/l]	Observations
1	35	125.00	5,411.3	Lower Marker
2	49	483.05	14,824.8	
3	55	337.25	9,299.4	
4	403	2,797.72	10,511.4	
5	479	103.20	326.1	
6	517	308.70	905.3	
7	554	584.29	1,598.0	
8	10,380	75.00	10.9	Upper Marker

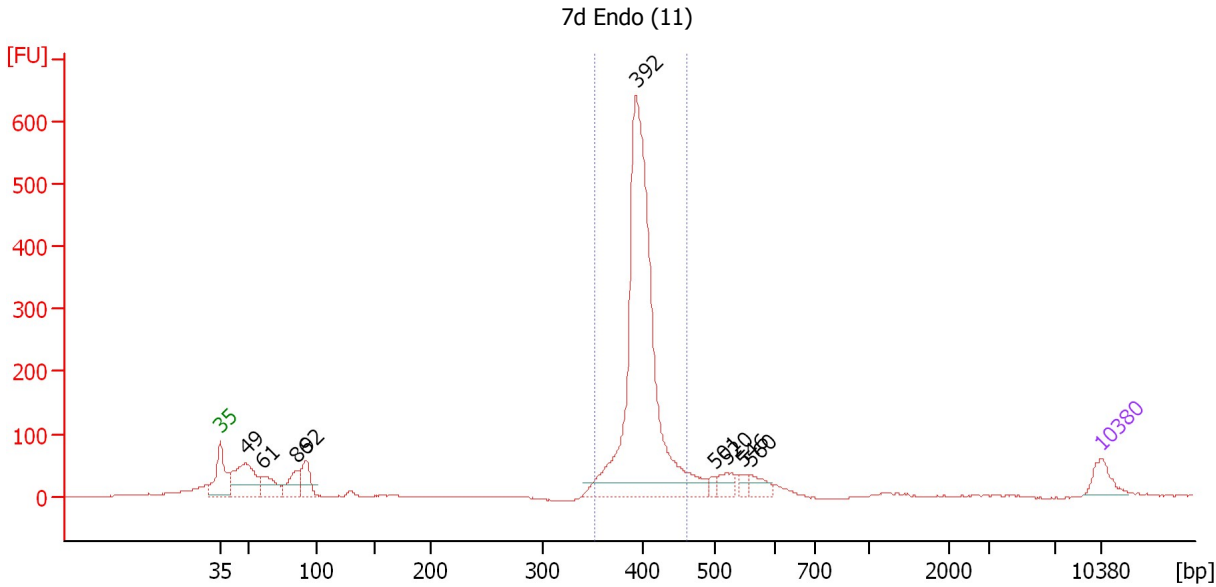
Region table for sample 5 : 7d BF (11)

From [bp]	To [bp]	Average Size [bp]	Molarity [pmol/l]	Conc. [pg/µl]	Corr. Area	% of Total	Size distribution in CV [%]	Color
357	463	411	9,038.4	2,446.81	1,979.1	58	4.6	Blue

Assay Class: High Sensitivity DNA Assay
 Data Path: C:\...ents and Settings\Bioanalyzer\2013-10-17\2013-10-17_002.xad

Created: 10/17/2013 10:25:32 AM
 Modified: 10/17/2013 11:15:22 AM

Electropherogram Summary Continued ...



Setpoint Deviations for sample 6 : 7d Endo (11)

Height Threshold [FU] : 20

Overall Results for sample 6 : 7d Endo (11)

Number of peaks found: 9 Corr. Area 1: 1,896.7
 Noise: 0.8

Peak table for sample 6 : 7d Endo (11)

Peak	Size [bp]	Conc. [pg/μl]	Molarity [pmol/l]	Observations
1	35	125.00	5,411.3	Lower Marker
2	49	438.88	13,641.4	
3	61	178.34	4,439.3	
4	86	155.83	2,753.6	
5	92	178.68	2,928.2	
6	392	2,352.68	9,086.0	
7	501	32.07	97.0	
8	520	71.89	209.3	
9	546	33.98	94.3	
10	560	68.63	185.7	
11	10,380	75.00	10.9	Upper Marker

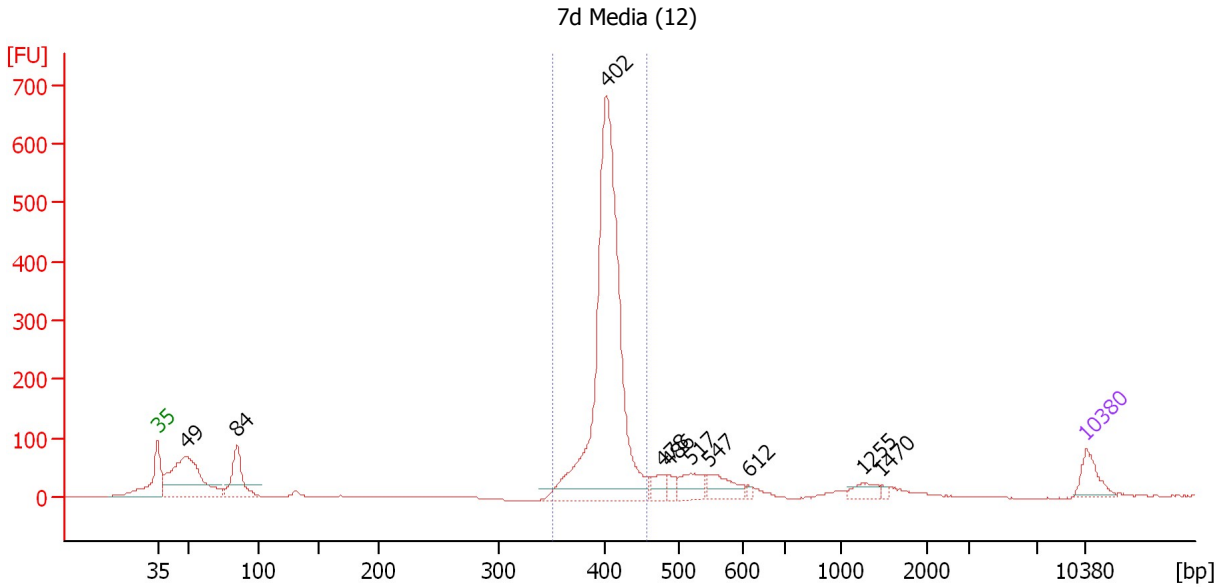
Region table for sample 6 : 7d Endo (11)

From [bp]	To [bp]	Average Size [bp]	Molarity [pmol/l]	Conc. [pg/μl]	Corr. Area	% of Total	Size distribution in CV [%]	Color
351	461	399	8,491.1	2,232.33	1,896.7	65	4.5	Blue

Assay Class: High Sensitivity DNA Assay
 Data Path: C:\...ents and Settings\Bioanalyzer\2013-10-17\2013-10-17_002.xad

Created: 10/17/2013 10:25:32 AM
 Modified: 10/17/2013 11:15:22 AM

Electropherogram Summary Continued ...



Setpoint Deviations for sample 7 : 7d Media (12)

Height Threshold [FU] : 20

Overall Results for sample 7 : 7d Media (12)

Number of peaks found: 10 Corr. Area 1: 1,799.9
 Noise: 0.4

Peak table for sample 7 : 7d Media (12)

Peak	Size [bp]	Conc. [pg/μl]	Molarity [pmol/l]	Observations
1	35	125.00	5,411.3	Lower Marker
2	49	656.65	20,257.6	
3	84	263.33	4,725.8	
4	402	1,917.58	7,219.7	
5	478	60.37	191.4	
6	486	40.54	126.5	
7	517	111.32	326.5	
8	547	117.94	326.4	
9	612	13.35	33.0	
10	1,255	47.12	56.9	
11	1,470	10.65	11.0	
12	10,380	75.00	10.9	Upper Marker

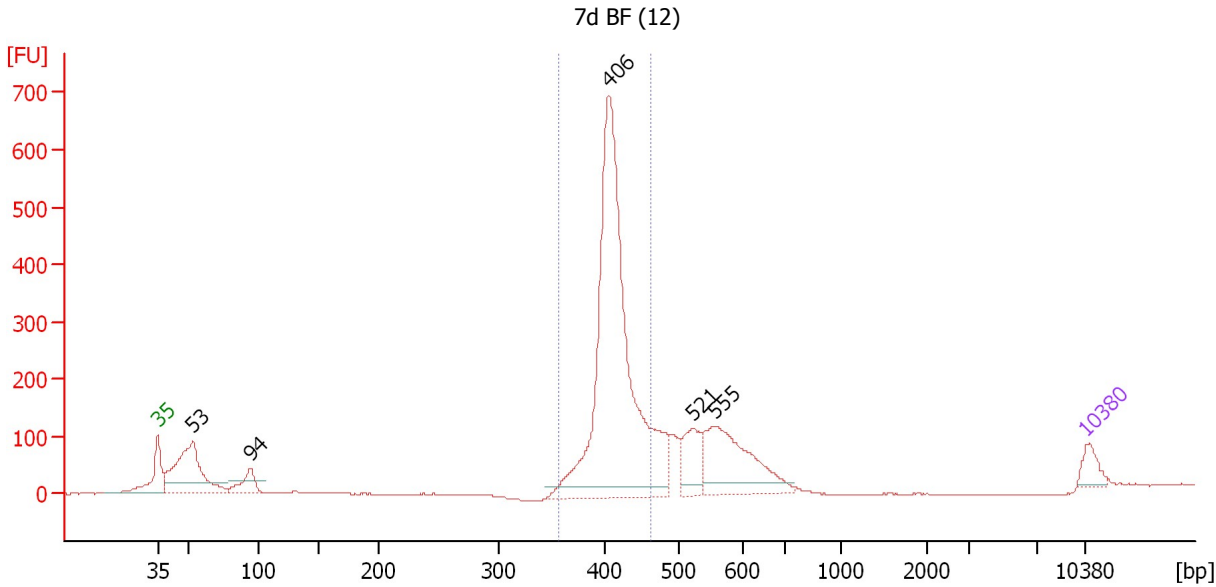
Region table for sample 7 : 7d Media (12)

From [bp]	To [bp]	Average Size [bp]	Molarity [pmol/l]	Conc. [pg/μl]	Corr. Area	% of Total	Size distribution in CV [%]	Color
352	457	405	6,888.8	1,839.11	1,799.9	63	4.1	Blue

Assay Class: High Sensitivity DNA Assay
 Data Path: C:\...ents and Settings\Bioanalyzer\2013-10-17\2013-10-17_002.xad

Created: 10/17/2013 10:25:32 AM
 Modified: 10/17/2013 11:15:22 AM

Electropherogram Summary Continued ...



Setpoint Deviations for sample 8 : 7d BF (12)

Height Threshold [FU] : 20

Overall Results for sample 8 : 7d BF (12)

Number of peaks found: 5 Corr. Area 1: 2,036.0
 Noise: 0.4

Peak table for sample 8 : 7d BF (12)

Peak	Size [bp]	Conc. [pg/μl]	Molarity [pmol/l]	Observations
1	35	125.00	5,411.3	Lower Marker
2	53	782.03	22,152.8	
3	94	172.27	2,774.5	
4	406	2,759.50	10,295.9	
5	521	247.34	719.8	
6	555	643.87	1,756.6	
7	10,380	75.00	10.9	Upper Marker

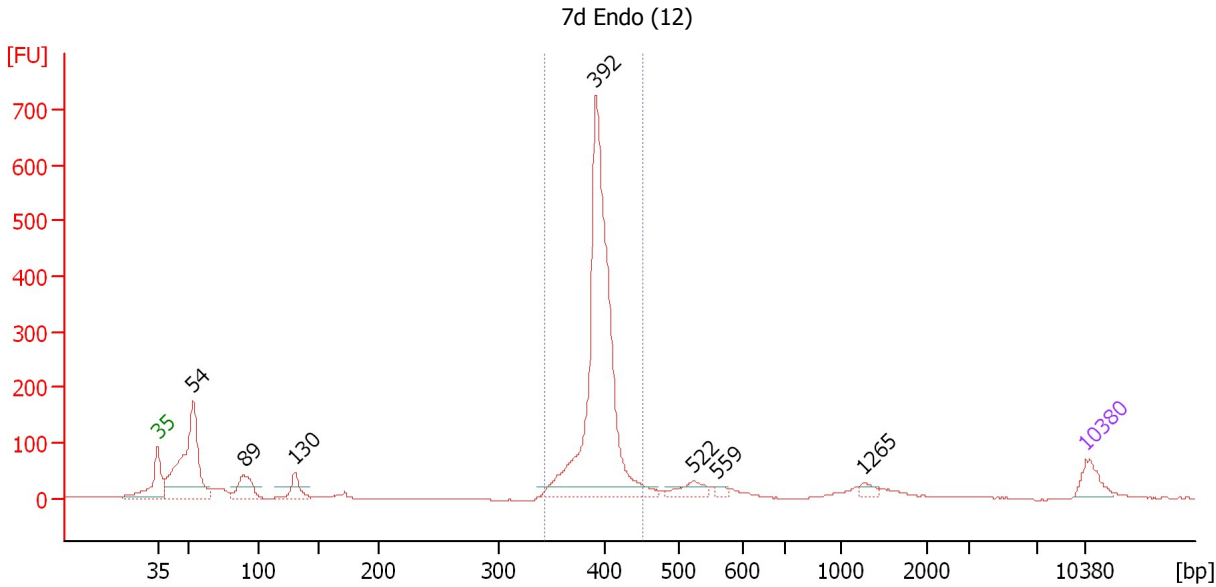
Region table for sample 8 : 7d BF (12)

From [bp]	To [bp]	Average Size [bp]	Molarity [pmol/l]	Conc. [pg/μl]	Corr. Area	% of Total	Size distribution in CV [%]	Color
357	461	412	8,534.0	2,317.66	2,035.9	57	4.6	Blue

Assay Class: High Sensitivity DNA Assay
 Data Path: C:\...ents and Settings\Bioanalyzer\2013-10-17\2013-10-17_002.xad

Created: 10/17/2013 10:25:32 AM
 Modified: 10/17/2013 11:15:22 AM

Electropherogram Summary Continued ...



Setpoint Deviations for sample 9 : 7d Endo (12)

Height Threshold [FU] : 20

Overall Results for sample 9 : 7d Endo (12)

Number of peaks found: 7 Corr. Area 1: 1,695.2
 Noise: 0.7

Peak table for sample 9 : 7d Endo (12)

Peak	Size [bp]	Conc. [pg/μl]	Molarity [pmol/l]	Observations
1	35	125.00	5,411.3	Lower Marker
2	54	894.96	25,122.2	
3	89	175.04	2,968.4	
4	130	101.46	1,182.8	
5	392	1,942.04	7,508.7	
6	522	92.15	267.3	
7	559	23.37	63.4	
8	1,265	32.12	38.5	
9	10,380	75.00	10.9	Upper Marker

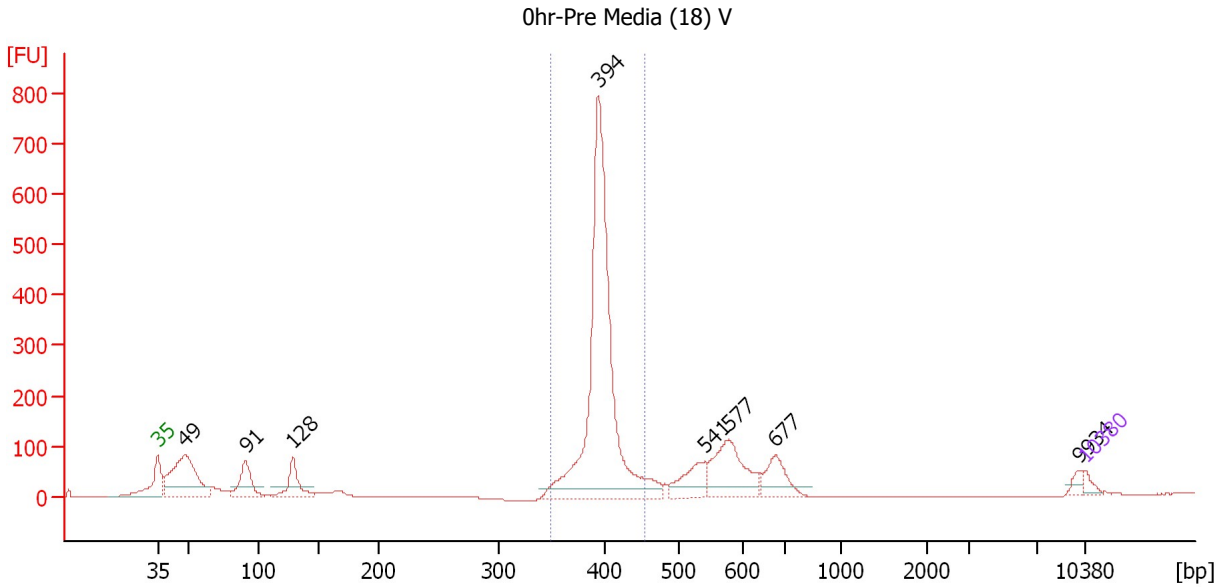
Region table for sample 9 : 7d Endo (12)

From [bp]	To [bp]	Average Size [bp]	Molarity [pmol/l]	Conc. [pg/μl]	Corr. Area	% of Total	Size distribution in CV [%]	Color
344	452	396	7,272.6	1,896.28	1,695.2	60	4.0	Blue

Assay Class: High Sensitivity DNA Assay
 Data Path: C:\...ents and Settings\Bioanalyzer\2013-10-17\2013-10-17_002.xad

Created: 10/17/2013 10:25:32 AM
 Modified: 10/17/2013 11:15:22 AM

Electropherogram Summary Continued ...



Setpoint Deviations for sample 10 : 0hr-Pre Media (18) V

Height Threshold [FU] : 20

Overall Results for sample 10 : 0hr-Pre Media (18) V

Number of peaks found: 8 Corr. Area 1: 1,727.6
 Noise: 0.3

Peak table for sample 10 : 0hr-Pre Media (18) V

Peak	Size [bp]	Conc. [pg/μl]	Molarity [pmol/l]	Observations
1	35	125.00	5,411.3	Lower Marker
2	49	2,082.47	64,836.2	
3	91	775.94	12,965.3	
4	128	689.96	8,169.3	
5	394	6,213.55	23,883.3	
6	541	558.40	1,564.0	
7	577	1,143.85	3,001.2	
8	677	531.29	1,189.4	
9	9,934	95.26	14.5	
10	10,380	75.00	10.9	Upper Marker

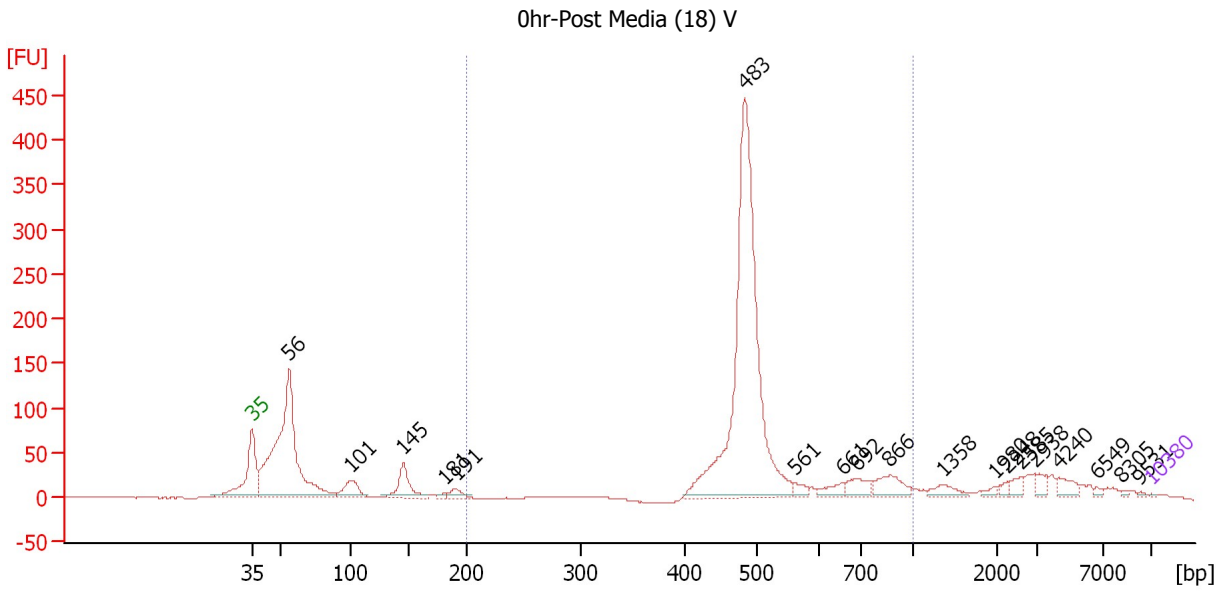
Region table for sample 10 : 0hr-Pre Media (18) V

From [bp]	To [bp]	Average Size [bp]	Molarity [pmol/l]	Conc. [pg/μl]	Corr. Area	% of Total	Size distribution in CV [%]	Color
350	454	397	21,935.7	5,747.82	1,727.6	52	3.9	Blue

Assay Class: High Sensitivity DNA Assay
 Data Path: C:\...ents and Settings\Bioanalyzer\2013-10-17\2013-10-17_002.xad

Created: 10/17/2013 10:25:32 AM
 Modified: 10/17/2013 11:15:22 AM

Electropherogram Summary Continued ...



Setpoint Deviations for sample 11 : 0hr-Post Media (18) V

End Analysis Time Range [s] : 118.2 Height Threshold [FU] : 3

Overall Results for sample 11 : 0hr-Post Media (18) V

Number of peaks found: 19 Corr. Area 1: 1,156.6
 Noise: 0.6


Peak table for sample 11 : 0hr-Post Media (18) V

Peak	Size [bp]	Conc. [pg/μl]	Molarity [pmol/l]	Observations
1	35	125.00	5,411.3	Lower Marker
2	56	50,450.48	1,365,246.1	
3	101	4,877.63	72,912.0	
4	145	6,502.00	67,729.6	
5	181	562.83	4,707.4	
6	191	1,616.07	12,794.2	
7	483	70,724.79	221,696.2	
8	561	1,364.60	3,684.9	
9	661	2,013.07	4,616.1	
10	692	2,723.26	5,958.7	
11	866	3,796.06	6,642.1	
12	1,358	1,754.11	1,957.2	
13	1,980	502.44	384.5	
14	2,248	492.61	332.0	
15	2,585	1,086.58	636.8	
16	2,938	1,227.88	633.2	
17	4,240	1,507.75	538.8	
18	6,549	308.94	71.5	
19	8,305	220.87	40.3	
20	9,531	140.79	22.4	
21	10,380	75.00	10.9	Upper Marker

Assay Class: High Sensitivity DNA Assay
Data Path: C:\...ents and Settings\Bioanalyzer\2013-10-17\2013-10-17_002.xad

Created: 10/17/2013 10:25:32 AM
Modified: 10/17/2013 11:15:22 AM

Electropherogram Summary Continued ...**... Region table for sample 11 : 0hr-Post Media (18) V**

From [bp]	To [bp]	Average Size [bp]	Molarity [pmol/l]	Conc. [pg/μl]	Corr. Area	% of Total	Size distribution in CV [%]	Co lor
200	1,000	522	241,894.1	80,372.55	1,156.6	58	20.2	

Assay Class: High Sensitivity DNA Assay
Data Path: C:\...ents and Settings\Bioanalyzer\2013-10-17\2013-10-17_002.xad

Created: 10/17/2013 10:25:32 AM
Modified: 10/17/2013 11:15:22 AM

Gel Image

