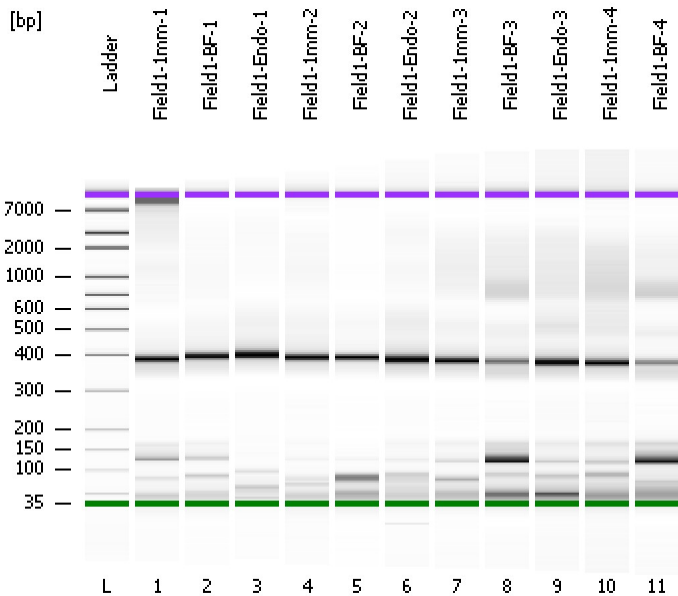


Assay Class: High Sensitivity DNA Assay
Data Path: C:\...ents and Settings\Bioanalyzer\2013-10-17\2013-10-17_006.xad

Created: 10/17/2013 1:09:35 PM
Modified: 10/17/2013 2:17:02 PM

Electrophoresis File Run Summary



Instrument Information:

Instrument Name: DE13701086 Firmware: C.01.069
Serial#: DE13701086 Type: G2938B

Assay Information:

Assay Origin Path: C:\Program Files\Agilent\2100 bioanalyzer\2100 expert\assays\dsDNA\High Sensitivity DNA.xsy
Assay Class: High Sensitivity DNA Assay
Version: 1.03
Assay Comments: Copyright © 2003-2010 Agilent Technologies

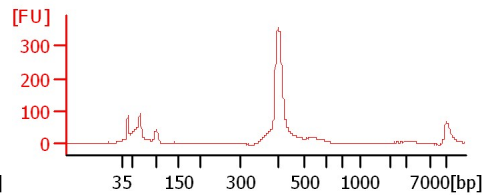
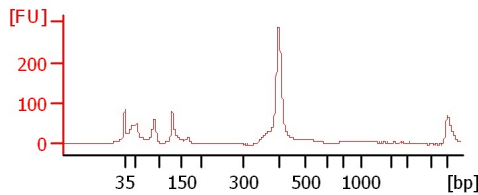
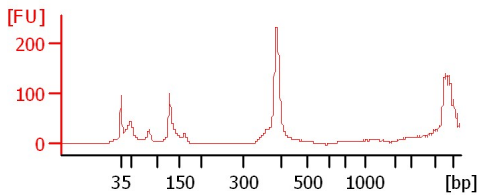
Chip Information:

Chip Lot #:
Reagent Kit Lot #:
Chip Comments:

Field1-1mm-1

Field1-BF-1

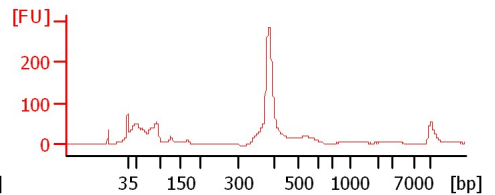
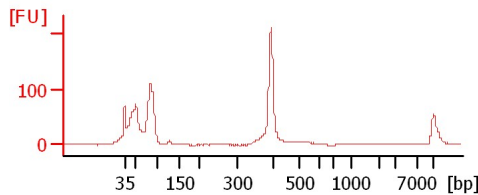
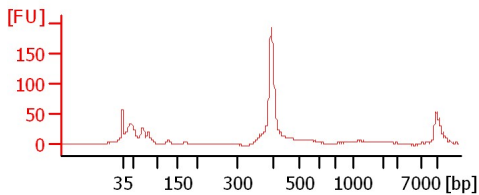
Field1-Endo-1



Field1-1mm-2

Field1-BF-2

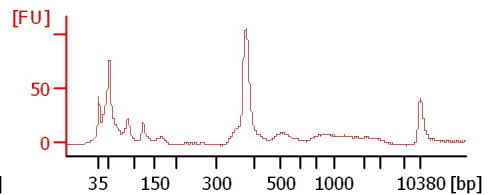
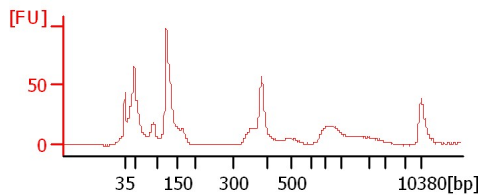
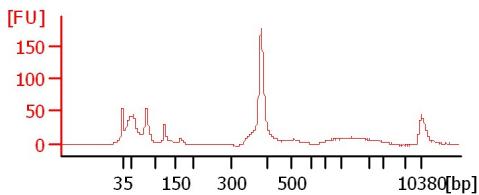
Field1-Endo-2



Field1-1mm-3

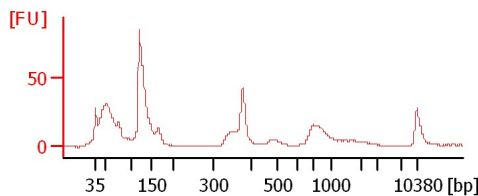
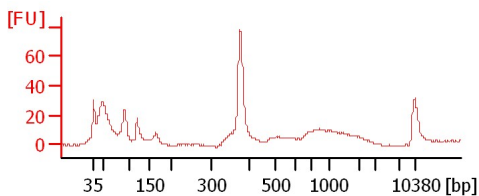
Field1-BF-3

Field1-Endo-3



Field1-1mm-4

Field1-BF-4



Assay Class: High Sensitivity DNA Assay
 Data Path: C:\...ents and Settings\Bioanalyzer\2013-10-17\2013-10-17_006.xad

Created: 10/17/2013 1:09:35 PM
 Modified: 10/17/2013 2:17:02 PM

Electrophoresis File Run Summary (Chip Summary)

Sample Name	Sample Comment	Rest. Digest	Status	Observation	Result Label	Result Color
Field1-1mm-1		<input type="checkbox"/>	✓			
Field1-BF-1		<input type="checkbox"/>	✓			
Field1-Endo-1		<input type="checkbox"/>	✓			
Field1-1mm-2		<input type="checkbox"/>	✓			
Field1-BF-2		<input type="checkbox"/>	✓			
Field1-Endo-2		<input type="checkbox"/>	✓			
Field1-1mm-3		<input type="checkbox"/>	✓			
Field1-BF-3		<input type="checkbox"/>	✓			
Field1-Endo-3		<input type="checkbox"/>	✓			
Field1-1mm-4		<input type="checkbox"/>	✓			
Field1-BF-4		<input type="checkbox"/>	✓			
Ladder		<input type="checkbox"/>	✓			

Chip Lot #

Reagent Kit Lot #

Chip Comments :

Assay Class: High Sensitivity DNA Assay
Data Path: C:\...ents and Settings\Bioanalyzer\2013-10-17\2013-10-17_006.xad

Created: 10/17/2013 1:09:35 PM
Modified: 10/17/2013 2:17:02 PM

Electrophoresis Assay Details

General Analysis Settings

Number of Available Sample and Ladder Wells (Max.) : 12
Minimum Visible Range [s] : 32
Maximum Visible Range [s] : 138
Start Analysis Time Range [s] : 33
End Analysis Time Range [s] : 137.5
Ladder Concentration [pg/ μ l] : 1950
Uses Standard Area for Ladder Fragments
Lower Marker Concentration [pg/ μ l] : 125
Upper Marker Concentration [pg/ μ l] : 75
Used Upper Marker for Quantitation
Standard Curve Fit is Point to Point
Show Data Aligned to Lower and Upper Marker

Integrator Settings

Integration Start Time [s] : 33.05
Integration End Time [s] : 137
Slope Threshold : 0.8
Height Threshold [FU] : 5
Area Threshold : 0.1
Width Threshold [s] : 0.6
Baseline Plateau [s] : 0.5

Filter Settings

Filter Width [s] : 0.5
Polynomial Order : 4

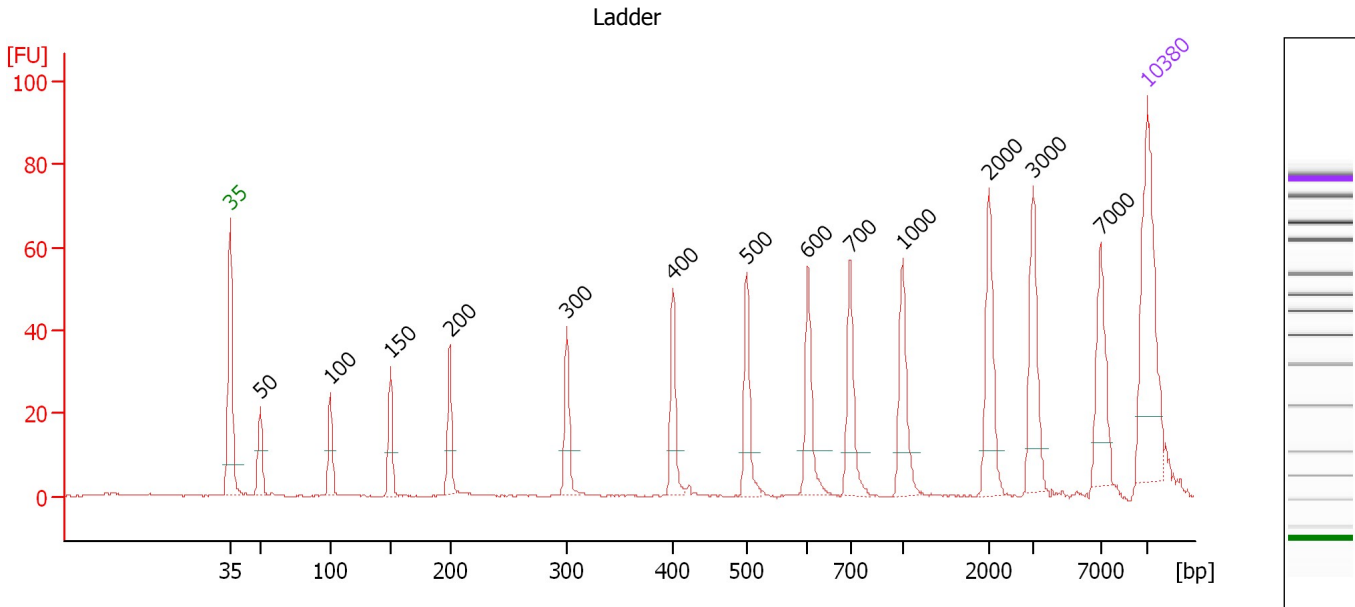
Ladder

Ladder Peak	Size	Area
1	35	160
2	50	210
3	100	208
4	150	221
5	200	242
6	300	270
7	400	305
8	500	306
9	600	336
10	700	321
11	1000	366
12	2000	413
13	3000	411
14	7000	400
15	10380	214

Assay Class: High Sensitivity DNA Assay
 Data Path: C:\...ents and Settings\Bioanalyzer\2013-10-17\2013-10-17_006.xad

Created: 10/17/2013 1:09:35 PM
 Modified: 10/17/2013 2:17:02 PM

Electropherogram Summary



Overall Results for Ladder

Noise: 0.2

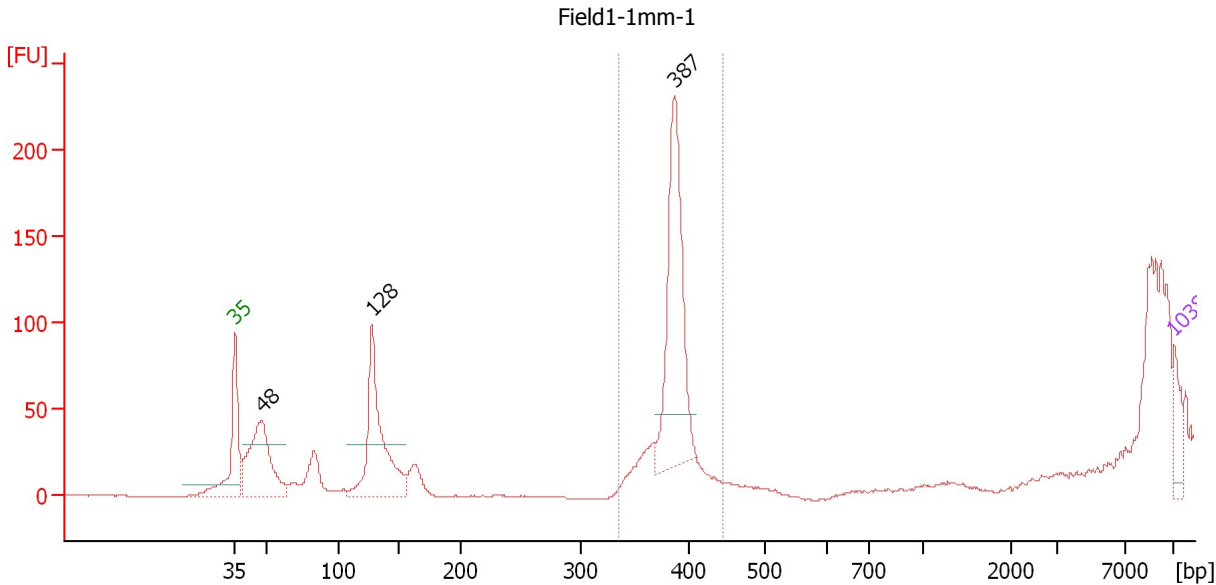
Peak table for Ladder

Peak	Size [bp]	Conc. [pg/μl]	Molarity [pmol/l]	Observations
1	35	125.00	5,411.3	Lower Marker
2	50	150.00	4,545.5	Ladder Peak
3	100	150.00	2,272.7	Ladder Peak
4	150	150.00	1,515.2	Ladder Peak
5	200	150.00	1,136.4	Ladder Peak
6	300	150.00	757.6	Ladder Peak
7	400	150.00	568.2	Ladder Peak
8	500	150.00	454.5	Ladder Peak
9	600	150.00	378.8	Ladder Peak
10	700	150.00	324.7	Ladder Peak
11	1,000	150.00	227.3	Ladder Peak
12	2,000	150.00	113.6	Ladder Peak
13	3,000	150.00	75.8	Ladder Peak
14	7,000	150.00	32.5	Ladder Peak
15	10,380	75.00	10.9	Upper Marker

Assay Class: High Sensitivity DNA Assay
 Data Path: C:\...ents and Settings\Bioanalyzer\2013-10-17\2013-10-17_006.xad

Created: 10/17/2013 1:09:35 PM
 Modified: 10/17/2013 2:17:02 PM

Electropherogram Summary Continued ...



Setpoint Deviations for sample 1 : Field1-1mm-1

Height Threshold [FU] : 30

Overall Results for sample 1 : Field1-1mm-1

Number of peaks found: 3 Corr. Area 1: 359.8
 Noise: 0.2

Peak table for sample 1 : Field1-1mm-1

Peak	Size [bp]	Conc. [pg/µl]	Molarity [pmol/l]	Observations
1	35	125.00	5,411.3	Lower Marker
2	48	614.80	19,373.9	
3	128	698.62	8,277.2	
4	387	790.29	3,095.8	
5	10,380	75.00	10.9	Upper Marker

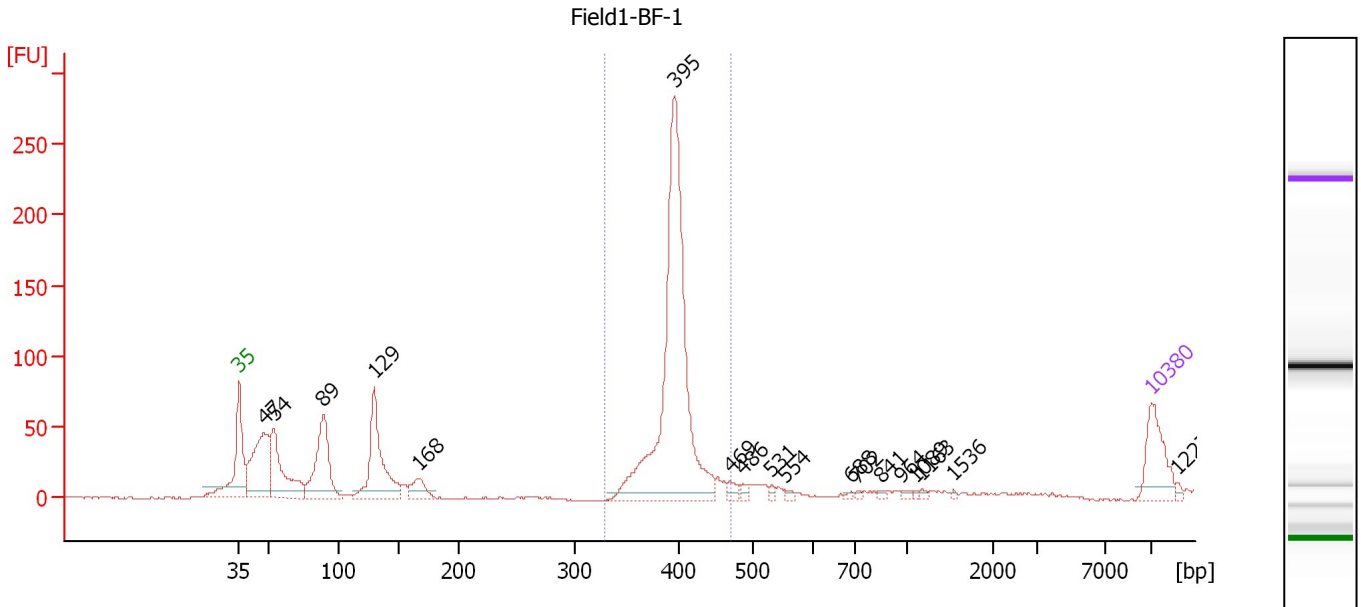
Region table for sample 1 : Field1-1mm-1

From [bp]	To [bp]	Average Size [bp]	Molarity [pmol/l]	Conc. [pg/µl]	Corr. Area	% of Total	Size distribution in CV [%]	Color
337	445	388	2,890.6	739.57	359.8	43	1.8	Blue

Assay Class: High Sensitivity DNA Assay
 Data Path: C:\...ents and Settings\Bioanalyzer\2013-10-17\2013-10-17_006.xad

Created: 10/17/2013 1:09:35 PM
 Modified: 10/17/2013 2:17:02 PM

Electropherogram Summary Continued ...



Overall Results for sample 2 : Field1-BF-1

Number of peaks found: 18 Corr. Area 1: 656.4
 Noise: 0.5

Peak table for sample 2 : Field1-BF-1

Peak	Size [bp]	Conc. [pg/μl]	Molarity [pmol/l]	Observations
1	35	125.00	5,411.3	Lower Marker
2	47	257.51	8,232.3	
3	54	210.25	5,948.5	
4	89	230.07	3,917.3	
5	129	248.48	2,909.1	
6	168	48.05	434.5	
7	395	770.19	2,951.8	
8	469	15.02	48.5	
9	486	10.86	33.8	
10	531	7.17	20.5	
11	554	6.13	16.8	
12	688	4.26	9.4	
13	702	4.16	9.0	
14	841	5.02	9.0	
15	964	5.55	8.7	
16	1,089	3.24	4.5	
17	1,163	4.27	5.6	
18	1,536	2.79	2.8	
19	10,380	75.00	10.9	Upper Marker
20	12,273	0.00	0.0	

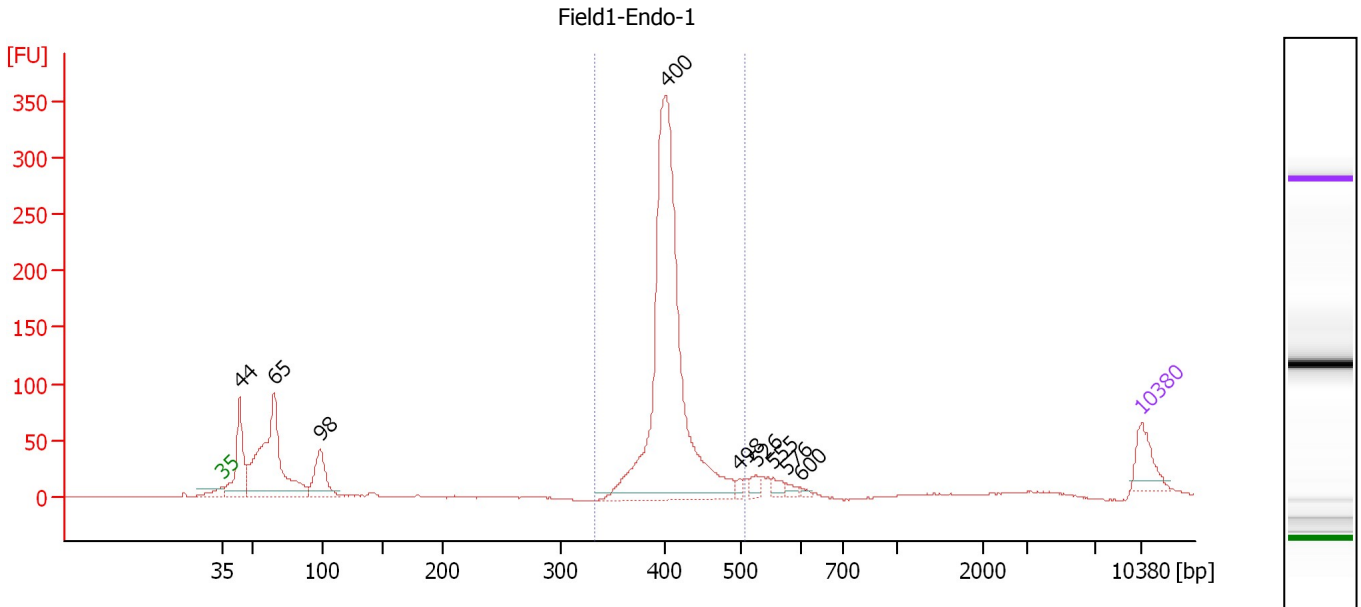
Region table for sample 2 : Field1-BF-1

From [bp]	To [bp]	Average Size [bp]	Molarity [pmol/l]	Conc. [pg/μl]	Corr. Area	% of Total	Size distribution in CV [%]	Color
328	469	397	2,748.6	718.39	656.4	52	4.4	Blue

Assay Class: High Sensitivity DNA Assay
 Data Path: C:\...ents and Settings\Bioanalyzer\2013-10-17\2013-10-17_006.xad

Created: 10/17/2013 1:09:35 PM
 Modified: 10/17/2013 2:17:02 PM

Electropherogram Summary Continued ...



Overall Results for sample 3 : Field1-Endo-1

Number of peaks found: 9 Corr. Area 1: 1,085.7
 Noise: 0.4

Peak table for sample 3 : Field1-Endo-1

Peak	Size [bp]	Conc. [pg/µl]	Molarity [pmol/l]	Observations
1	35	125.00	5,411.3	Lower Marker
2	44	263.92	9,125.8	
3	65	684.11	15,838.2	
4	98	172.58	2,669.7	
5	400	1,467.30	5,557.2	
6	498	14.26	43.4	
7	526	26.48	76.3	
8	555	25.13	68.6	
9	576	15.91	41.9	
10	600	8.49	21.5	
11	10,380	75.00	10.9	Upper Marker

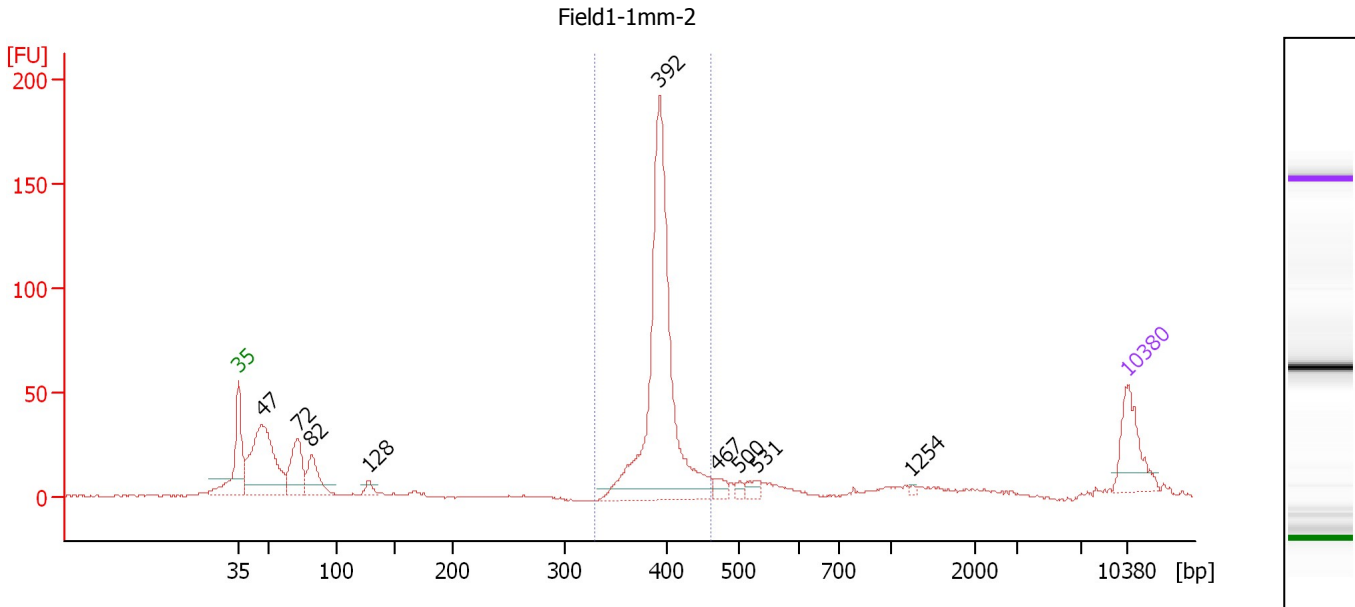
Region table for sample 3 : Field1-Endo-1

From [bp]	To [bp]	Average Size [bp]	Molarity [pmol/l]	Conc. [pg/µl]	Corr. Area	% of Total	Size distribution in CV [%]	Color
333	509	408	5,277.3	1,415.70	1,085.7	61	6.1	Blue

Assay Class: High Sensitivity DNA Assay
 Data Path: C:\...ents and Settings\Bioanalyzer\2013-10-17\2013-10-17_006.xad

Created: 10/17/2013 1:09:35 PM
 Modified: 10/17/2013 2:17:02 PM

Electropherogram Summary Continued ...



Overall Results for sample 4 : Field1-1mm-2

Number of peaks found: 9 Corr. Area 1: 449.2
 Noise: 0.4

Peak table for sample 4 : Field1-1mm-2

Peak	Size [bp]	Conc. [pg/μl]	Molarity [pmol/l]	Observations
1	35	125.00	5,411.3	Lower Marker
2	47	345.84	11,176.4	
3	72	126.98	2,665.8	
4	82	86.97	1,608.2	
5	128	17.13	203.1	
6	392	675.07	2,609.5	
7	467	18.82	61.0	
8	500	10.46	31.7	
9	531	17.79	50.8	
10	1,254	2.96	3.6	
11	10,380	75.00	10.9	Upper Marker

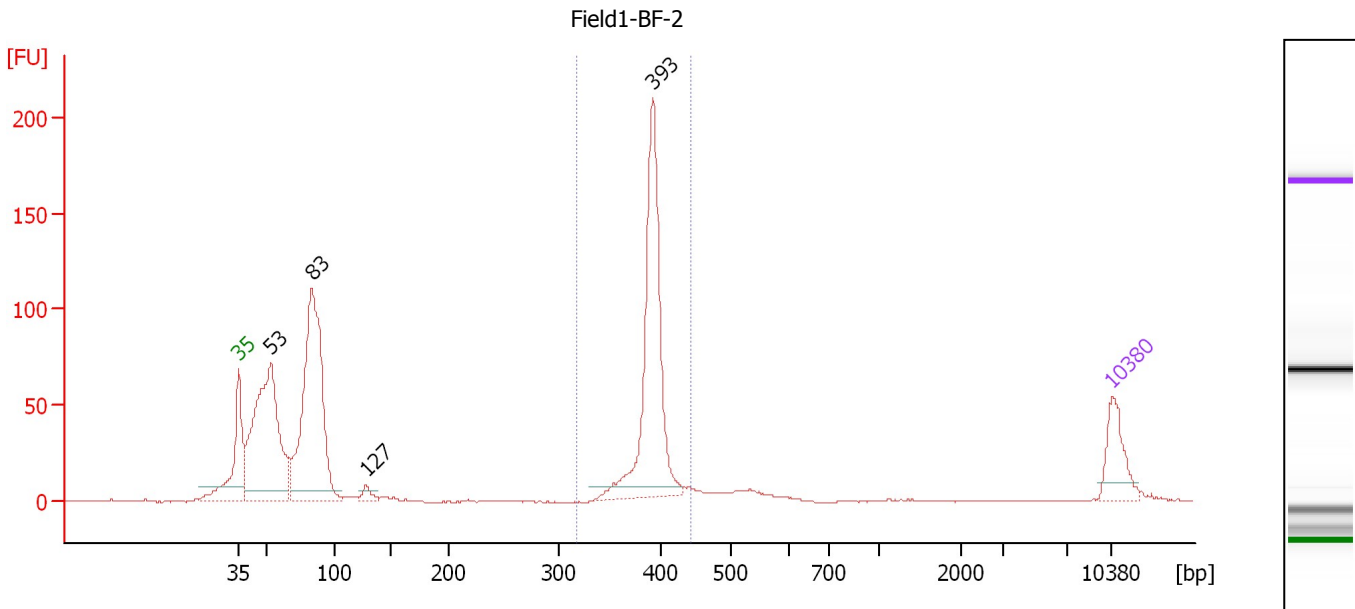
Region table for sample 4 : Field1-1mm-2

From [bp]	To [bp]	Average Size [bp]	Molarity [pmol/l]	Conc. [pg/μl]	Corr. Area	% of Total	Size distribution in CV [%]	Color
329	461	395	2,433.1	632.55	449.2	54	4.6	Blue

Assay Class: High Sensitivity DNA Assay
 Data Path: C:\...ents and Settings\Bioanalyzer\2013-10-17\2013-10-17_006.xad

Created: 10/17/2013 1:09:35 PM
 Modified: 10/17/2013 2:17:02 PM

Electropherogram Summary Continued ...



Overall Results for sample 5 : Field1-BF-2

Number of peaks found: 4 Corr. Area 1: 413.7
 Noise: 0.4

Peak table for sample 5 : Field1-BF-2

Peak	Size [bp]	Conc. [pg/μl]	Molarity [pmol/l]	Observations
1	35	125.00	5,411.3	Lower Marker
2	53	743.62	21,398.7	
3	83	838.18	15,249.4	
4	127	24.41	290.3	
5	393	545.05	2,102.0	
6	10,380	75.00	10.9	Upper Marker

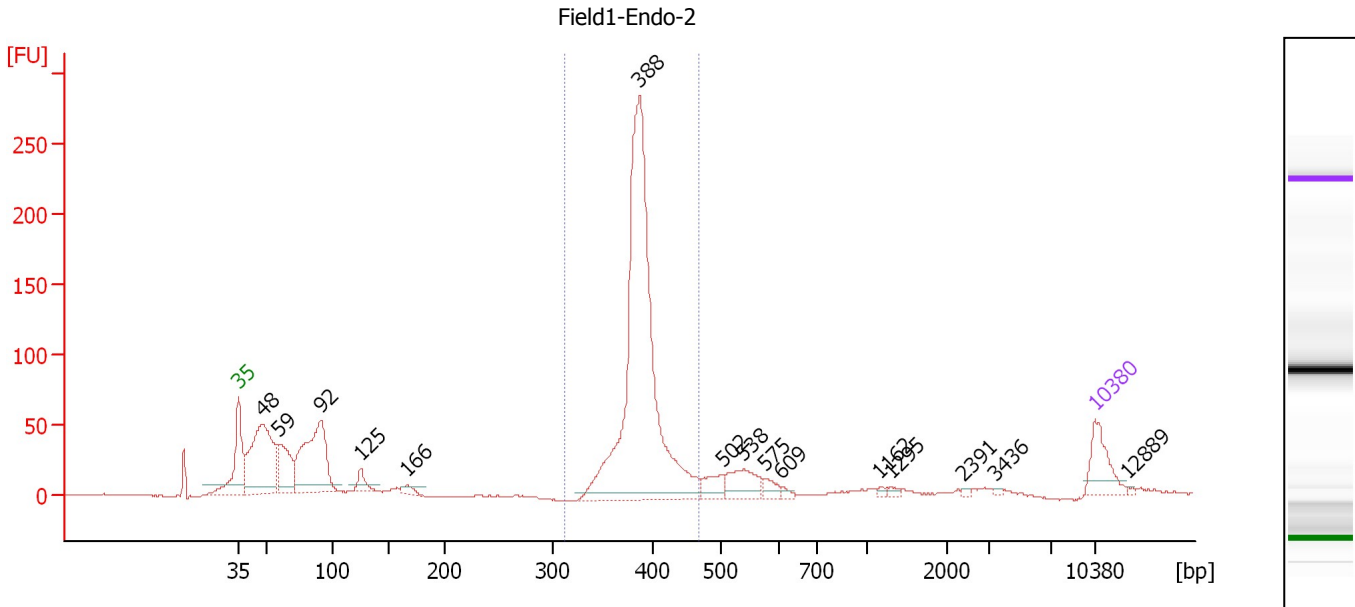
Region table for sample 5 : Field1-BF-2

From [bp]	To [bp]	Average Size [bp]	Molarity [pmol/l]	Conc. [pg/μl]	Corr. Area	% of Total	Size distribution in CV [%]	Color
317	443	391	2,236.2	577.38	413.7	32	3.6	Blue

Assay Class: High Sensitivity DNA Assay
 Data Path: C:\...ents and Settings\Bioanalyzer\2013-10-17\2013-10-17_006.xad

Created: 10/17/2013 1:09:35 PM
 Modified: 10/17/2013 2:17:02 PM

Electropherogram Summary Continued ...



Overall Results for sample 6 : Field1-Endo-2

Number of peaks found: 15 Corr. Area 1: 851.3
 Noise: 0.1

Peak table for sample 6 : Field1-Endo-2

Peak	Size [bp]	Conc. [pg/μl]	Molarity [pmol/l]	Observations
1	35	125.00	5,411.3	Lower Marker
2	48	488.13	15,530.3	
3	59	182.17	4,661.3	
4	92	443.36	7,328.3	
5	125	48.04	580.8	
6	166	23.62	215.1	
7	388	1,275.52	4,986.5	
8	502	52.59	158.7	
9	538	85.49	240.9	
10	575	26.42	69.6	
11	609	9.61	23.9	
12	1,162	6.01	7.8	
13	1,295	8.73	10.2	
14	2,391	4.33	2.7	
15	3,436	3.91	1.7	
16	10,380	75.00	10.9	Upper Marker
17	12,889	0.00	0.0	

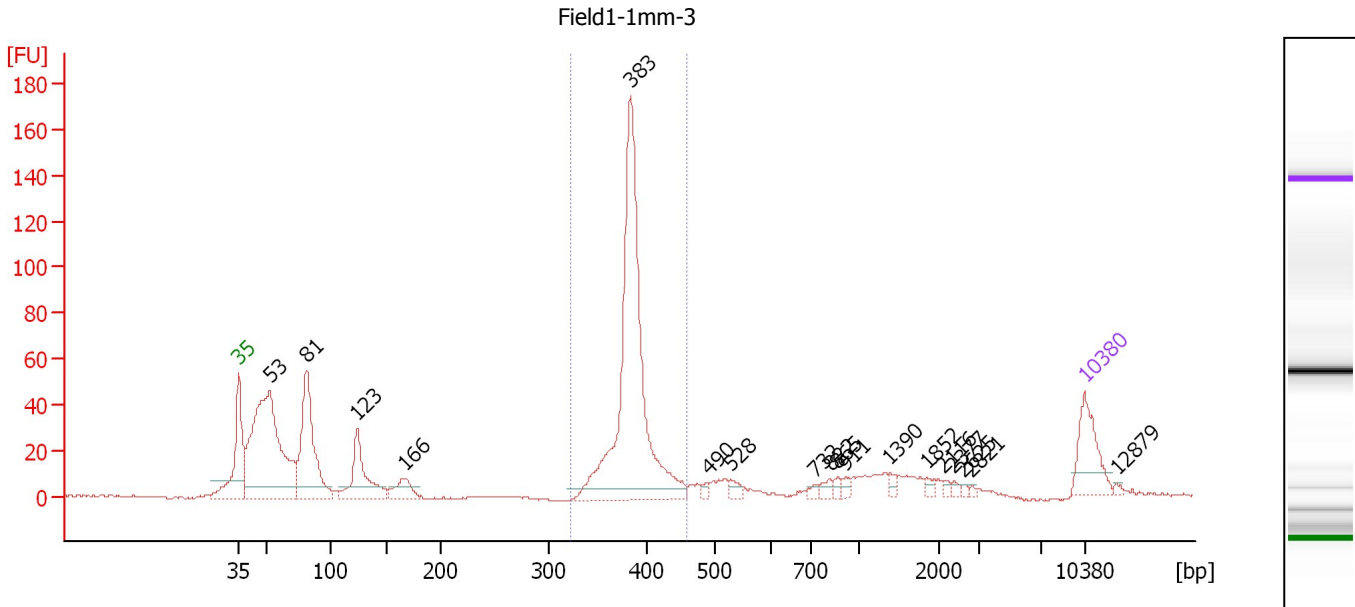
Region table for sample 6 : Field1-Endo-2

From [bp]	To [bp]	Average Size [bp]	Molarity [pmol/l]	Conc. [pg/μl]	Corr. Area	% of Total	Size distribution in CV [%]	Color
311	469	390	4,664.3	1,197.87	851.3	51	5.3	Blue

Assay Class: High Sensitivity DNA Assay
 Data Path: C:\...ents and Settings\Bioanalyzer\2013-10-17\2013-10-17_006.xad

Created: 10/17/2013 1:09:35 PM
 Modified: 10/17/2013 2:17:02 PM

Electropherogram Summary Continued ...



Overall Results for sample 7 : Field1-1mm-3

Number of peaks found: 18 Corr. Area 1: 416.4
 Noise: 0.2

Peak table for sample 7 : Field1-1mm-3

Peak	Size [bp]	Conc. [pg/μl]	Molarity [pmol/l]	Observations
1	35	125.00	5,411.3	Lower Marker
2	53	640.61	18,447.9	
3	81	320.02	5,989.2	
4	123	156.88	1,927.1	
5	166	52.01	475.1	
6	383	714.08	2,822.1	
7	490	8.81	27.2	
8	528	14.96	42.9	
9	732	8.29	17.2	
10	822	13.48	24.9	
11	865	7.88	13.8	
12	911	9.54	15.9	
13	1,390	8.67	9.5	
14	1,852	7.88	6.5	
15	2,116	5.59	4.0	
16	2,377	5.45	3.5	
17	2,625	3.61	2.1	
18	2,821	2.75	1.5	
19	10,380	75.00	10.9	Upper Marker
20	12,879	0.00	0.0	

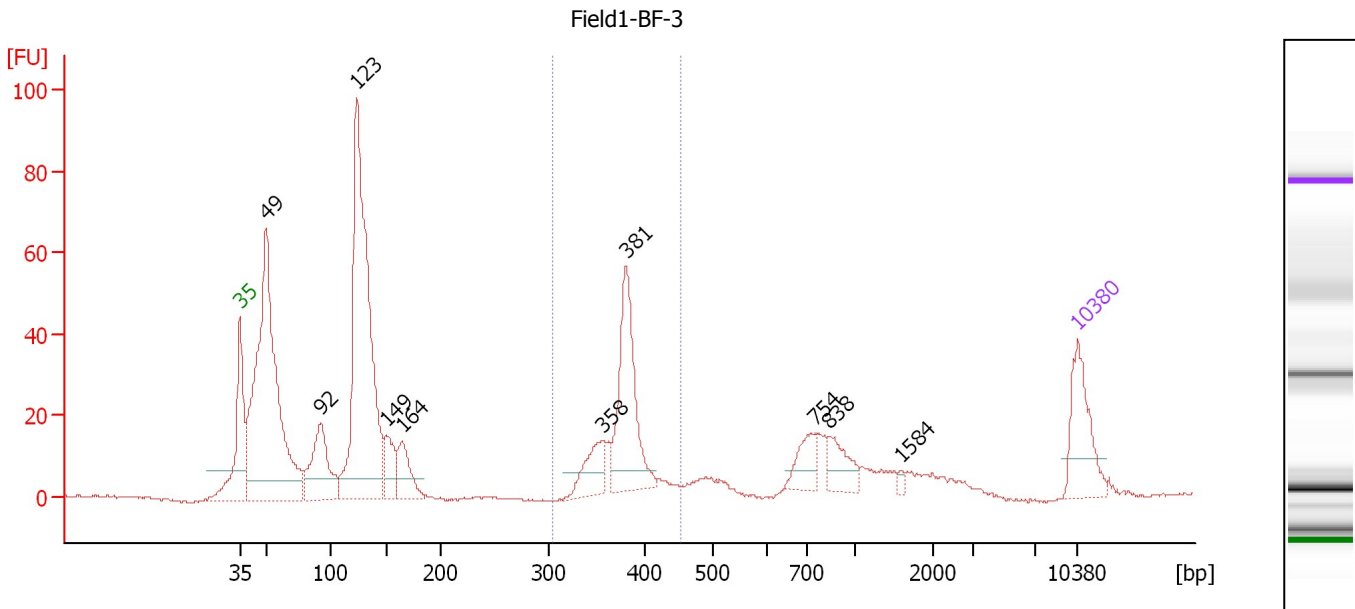
Region table for sample 7 : Field1-1mm-3

From [bp]	To [bp]	Average Size [bp]	Molarity [pmol/l]	Conc. [pg/μl]	Corr. Area	% of Total	Size distribution in CV [%]	Color
321	459	386	2,659.0	675.33	416.4	40	4.8	Blue

Assay Class: High Sensitivity DNA Assay
 Data Path: C:\...ents and Settings\Bioanalyzer\2013-10-17\2013-10-17_006.xad

Created: 10/17/2013 1:09:35 PM
 Modified: 10/17/2013 2:17:02 PM

Electropherogram Summary Continued ...



Overall Results for sample 8 : Field1-BF-3

Number of peaks found: 10 Corr. Area 1: 167.9
 Noise: 0.3

Peak table for sample 8 : Field1-BF-3

Peak	Size [bp]	Conc. [pg/μl]	Molarity [pmol/l]	Observations
1	35	125.00	5,411.3	Lower Marker
2	49	748.24	22,967.7	
3	92	162.00	2,674.2	
4	123	714.67	8,815.0	
5	149	67.23	681.5	
6	164	73.47	677.7	
7	358	66.04	279.7	
8	381	202.78	806.6	
9	754	45.65	91.8	
10	838	46.02	83.2	
11	1,584	4.59	4.4	
12	10,380	75.00	10.9	Upper Marker

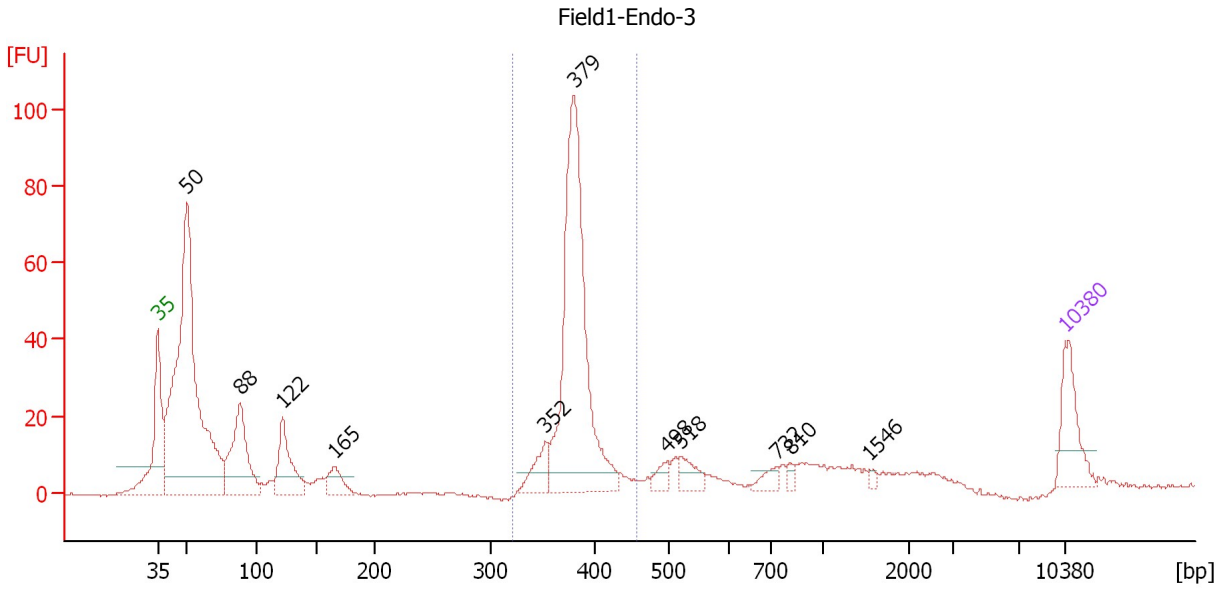
Region table for sample 8 : Field1-BF-3

From [bp]	To [bp]	Average Size [bp]	Molarity [pmol/l]	Conc. [pg/μl]	Corr. Area	% of Total	Size distribution in CV [%]	Color
304	454	378	1,241.1	309.03	167.9	17	5.7	Blue

Assay Class: High Sensitivity DNA Assay
 Data Path: C:\...ents and Settings\Bioanalyzer\2013-10-17\2013-10-17_006.xad

Created: 10/17/2013 1:09:35 PM
 Modified: 10/17/2013 2:17:02 PM

Electropherogram Summary Continued ...



Overall Results for sample 9 : Field1-Endo-3

Number of peaks found: 11 Corr. Area 1: 274.6
 Noise: 0.3

Peak table for sample 9 : Field1-Endo-3

Peak	Size [bp]	Conc. [pg/µl]	Molarity [pmol/l]	Observations
1	35	125.00	5,411.3	Lower Marker
2	50	963.20	29,296.9	
3	88	213.97	3,672.3	
4	122	130.57	1,627.5	
5	165	49.21	450.9	
6	352	52.74	227.2	
7	379	583.07	2,330.3	
8	498	23.54	71.7	
9	518	34.78	101.6	
10	732	20.06	41.5	
11	810	9.17	17.1	
12	1,546	5.56	5.4	
13	10,380	75.00	10.9	Upper Marker

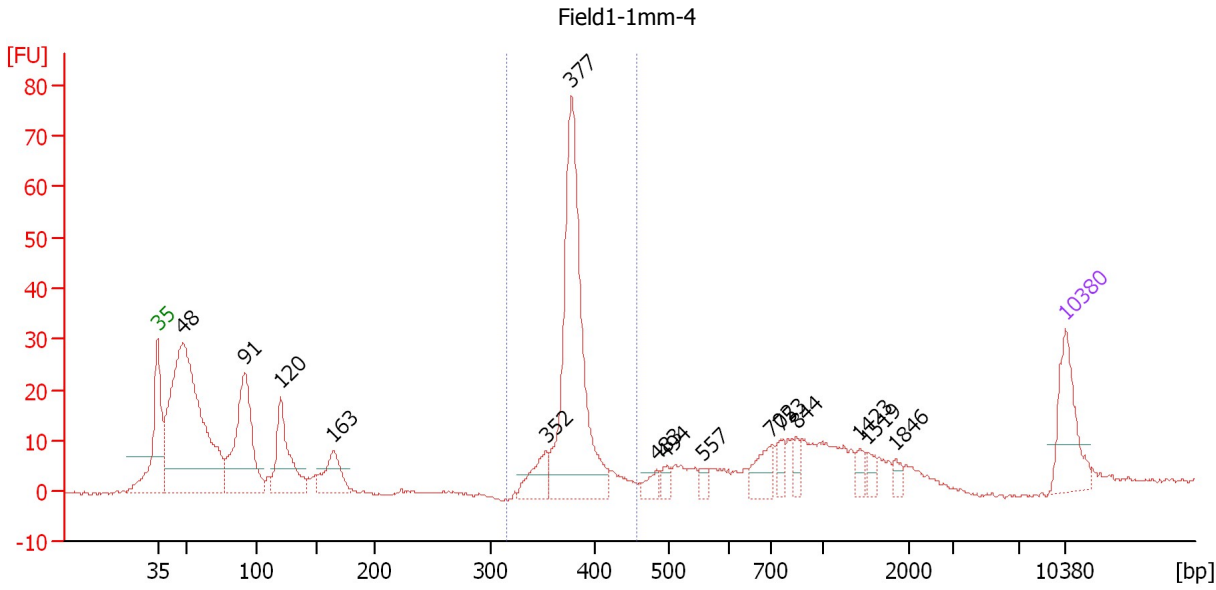
Region table for sample 9 : Field1-Endo-3

From [bp]	To [bp]	Average Size [bp]	Molarity [pmol/l]	Conc. [pg/µl]	Corr. Area	% of Total	Size distribution in CV [%]	Color
321	457	380	2,488.7	623.75	274.6	35	4.5	Blue

Assay Class: High Sensitivity DNA Assay
 Data Path: C:\...ents and Settings\Bioanalyzer\2013-10-17\2013-10-17_006.xad

Created: 10/17/2013 1:09:35 PM
 Modified: 10/17/2013 2:17:02 PM

Electropherogram Summary Continued ...



Overall Results for sample 10 : Field1-1mm-4

Number of peaks found: 15 Corr. Area 1: 170.6
 Noise: 0.3

Peak table for sample 10 : Field1-1mm-4

Peak	Size [bp]	Conc. [pg/μl]	Molarity [pmol/l]	Observations
1	35	125.00	5,411.3	Lower Marker
2	48	668.94	21,230.6	
3	91	253.80	4,215.7	
4	120	141.40	1,784.1	
5	163	72.44	671.8	
6	352	51.92	223.3	
7	377	437.41	1,758.5	
8	483	19.00	59.6	
9	494	14.09	43.3	
10	557	11.58	31.5	
11	702	41.91	90.5	
12	753	20.12	40.5	
13	844	18.82	33.8	
14	1,423	11.60	12.3	
15	1,519	12.77	12.7	
16	1,846	10.23	8.4	
17	10,380	75.00	10.9	Upper Marker

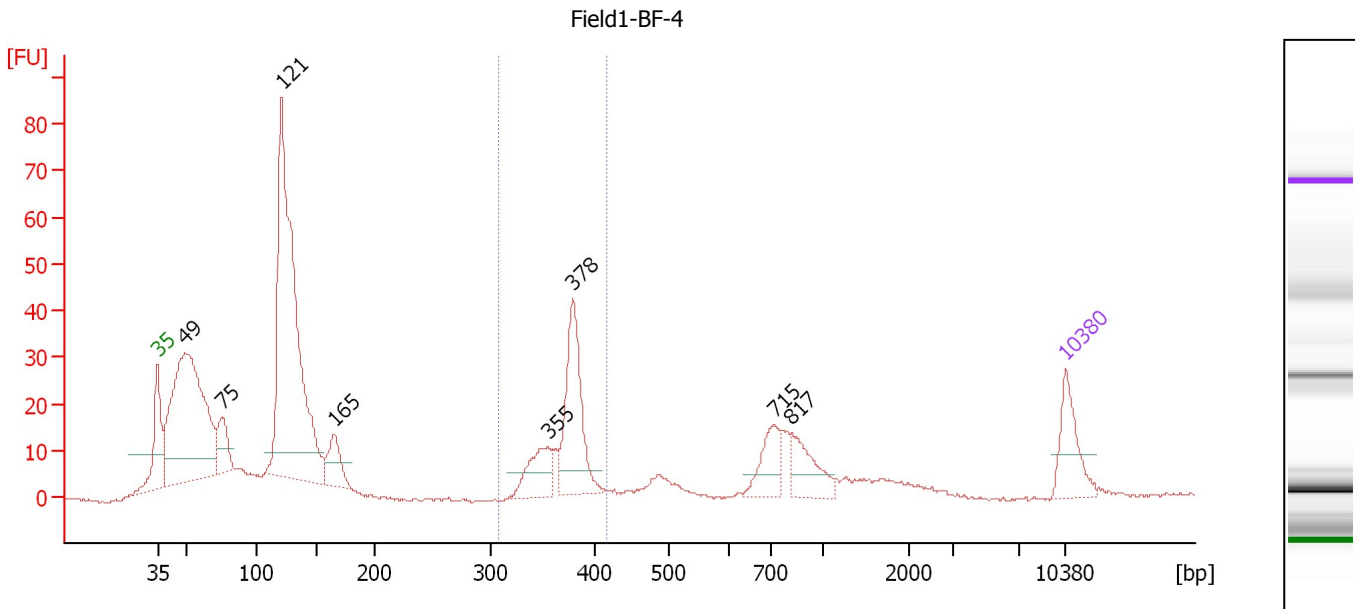
Region table for sample 10 : Field1-1mm-4

From [bp]	To [bp]	Average Size [bp]	Molarity [pmol/l]	Conc. [pg/μl]	Corr. Area	% of Total	Size distribution in CV [%]	Color
314	456	379	1,761.0	439.51	170.6	29	4.2	Blue

Assay Class: High Sensitivity DNA Assay
 Data Path: C:\...ents and Settings\Bioanalyzer\2013-10-17\2013-10-17_006.xad

Created: 10/17/2013 1:09:35 PM
 Modified: 10/17/2013 2:17:02 PM

Electropherogram Summary Continued ...



Overall Results for sample 11 : Field1-BF-4

Number of peaks found: 8 Corr. Area 1: 110.6
 Noise: 0.4

Peak table for sample 11 : Field1-BF-4

Peak	Size [bp]	Conc. [pg/μl]	Molarity [pmol/l]	Observations
1	35	125.00	5,411.3	Lower Marker
2	49	759.11	23,465.4	
3	75	91.38	1,841.7	
4	121	999.03	12,535.4	
5	165	84.55	777.0	
6	355	94.28	402.7	
7	378	229.12	917.6	
8	715	77.46	164.2	
9	817	82.23	152.5	
10	10,380	75.00	10.9	Upper Marker

Region table for sample 11 : Field1-BF-4

From [bp]	To [bp]	Average Size [bp]	Molarity [pmol/l]	Conc. [pg/μl]	Corr. Area	% of Total	Size distribution in CV [%]	Color
307	416	370	1,414.8	345.50	110.6	14	4.7	Blue

Assay Class: High Sensitivity DNA Assay
Data Path: C:\...ents and Settings\Bioanalyzer\2013-10-17\2013-10-17_006.xad

Created: 10/17/2013 1:09:35 PM
Modified: 10/17/2013 2:17:02 PM

Gel Image

