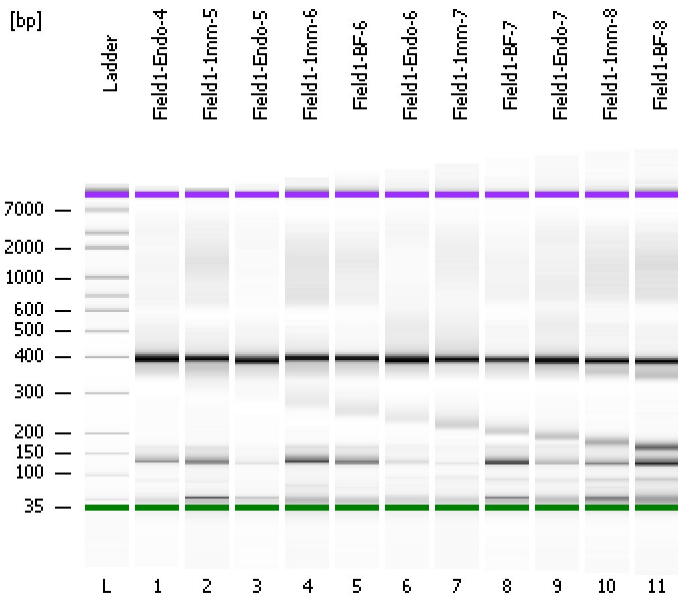


Assay Class: High Sensitivity DNA Assay
Data Path: C:\...ents and Settings\Bioanalyzer\2013-10-17\2013-10-17_008.xad

Created: 10/17/2013 1:57:44 PM
Modified: 10/17/2013 4:38:35 PM

Electrophoresis File Run Summary



Instrument Information:

Instrument Name: DE13701086 Firmware: C.01.069
Serial#: DE13701086 Type: G2938B

Assay Information:

Assay Origin Path: C:\Program Files\Agilent\2100 bioanalyzer\2100 expert\assays\dsDNA\High Sensitivity DNA.xsy
Assay Class: High Sensitivity DNA Assay
Version: 1.03
Assay Comments: Copyright © 2003-2010 Agilent Technologies

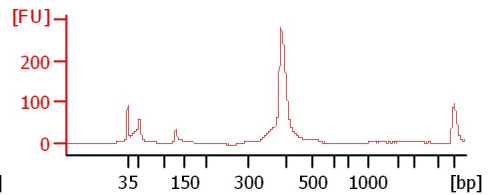
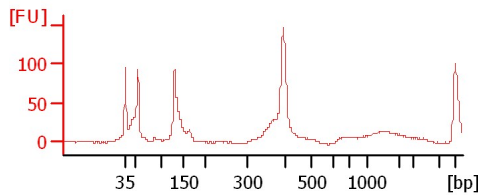
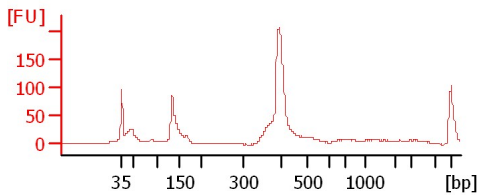
Chip Information:

Chip Lot #: Reagent Kit Lot #: Chip Comments:

Field1-Endo-4

Field1-1mm-5

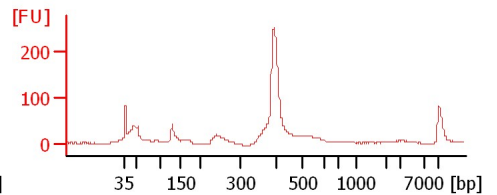
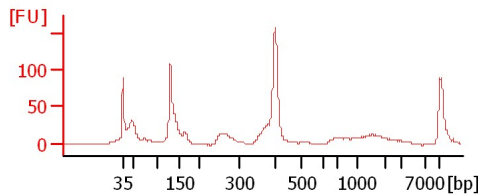
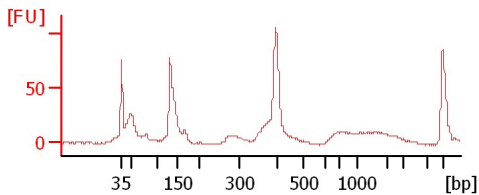
Field1-Endo-5



Field1-1mm-6

Field1-BF-6

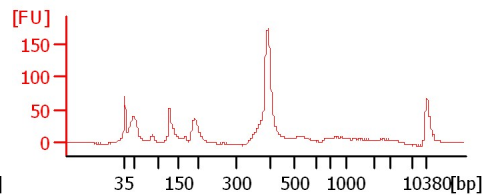
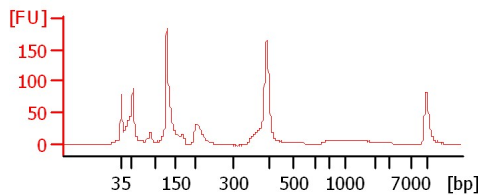
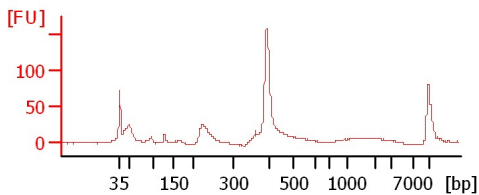
Field1-Endo-6



Field1-1mm-7

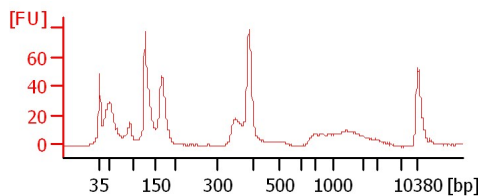
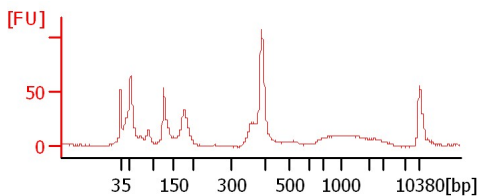
Field1-BF-7

Field1-Endo-7



Field1-1mm-8

Field1-BF-8



Assay Class: High Sensitivity DNA Assay
 Data Path: C:\...ents and Settings\Bioanalyzer\2013-10-17\2013-10-17_008.xad

Created: 10/17/2013 1:57:44 PM
 Modified: 10/17/2013 4:38:35 PM

Electrophoresis File Run Summary (Chip Summary)

Sample Name	Sample Comment	Rest. Digest	Status	Observation	Result Label	Result Color
Field1-Endo-4		<input type="checkbox"/>	✓			
Field1-1mm-5		<input type="checkbox"/>	✓			
Field1-Endo-5		<input type="checkbox"/>	✓			
Field1-1mm-6		<input type="checkbox"/>	✓			
Field1-BF-6		<input type="checkbox"/>	✓			
Field1-Endo-6		<input type="checkbox"/>	✓			
Field1-1mm-7		<input type="checkbox"/>	✓			
Field1-BF-7		<input type="checkbox"/>	✓			
Field1-Endo-7		<input type="checkbox"/>	✓			
Field1-1mm-8		<input type="checkbox"/>	✓			
Field1-BF-8		<input type="checkbox"/>	✓			
Ladder		<input type="checkbox"/>	✓			

Chip Lot #

Reagent Kit Lot #

Chip Comments :

Assay Class: High Sensitivity DNA Assay
Data Path: C:\...ents and Settings\Bioanalyzer\2013-10-17\2013-10-17_008.xad

Created: 10/17/2013 1:57:44 PM
Modified: 10/17/2013 4:38:35 PM

Electrophoresis Assay Details

General Analysis Settings

Number of Available Sample and Ladder Wells (Max.) : 12
Minimum Visible Range [s] : 32
Maximum Visible Range [s] : 138
Start Analysis Time Range [s] : 33
End Analysis Time Range [s] : 137.5
Ladder Concentration [pg/μl] : 1950
Uses Standard Area for Ladder Fragments
Lower Marker Concentration [pg/μl] : 125
Upper Marker Concentration [pg/μl] : 75
Used Upper Marker for Quantitation
Standard Curve Fit is Point to Point
Show Data Aligned to Lower and Upper Marker

Integrator Settings

Integration Start Time [s] : 33.05
Integration End Time [s] : 137
Slope Threshold : 0.8
Height Threshold [FU] : 5
Area Threshold : 0.1
Width Threshold [s] : 0.6
Baseline Plateau [s] : 0.5

Filter Settings

Filter Width [s] : 0.5
Polynomial Order : 4

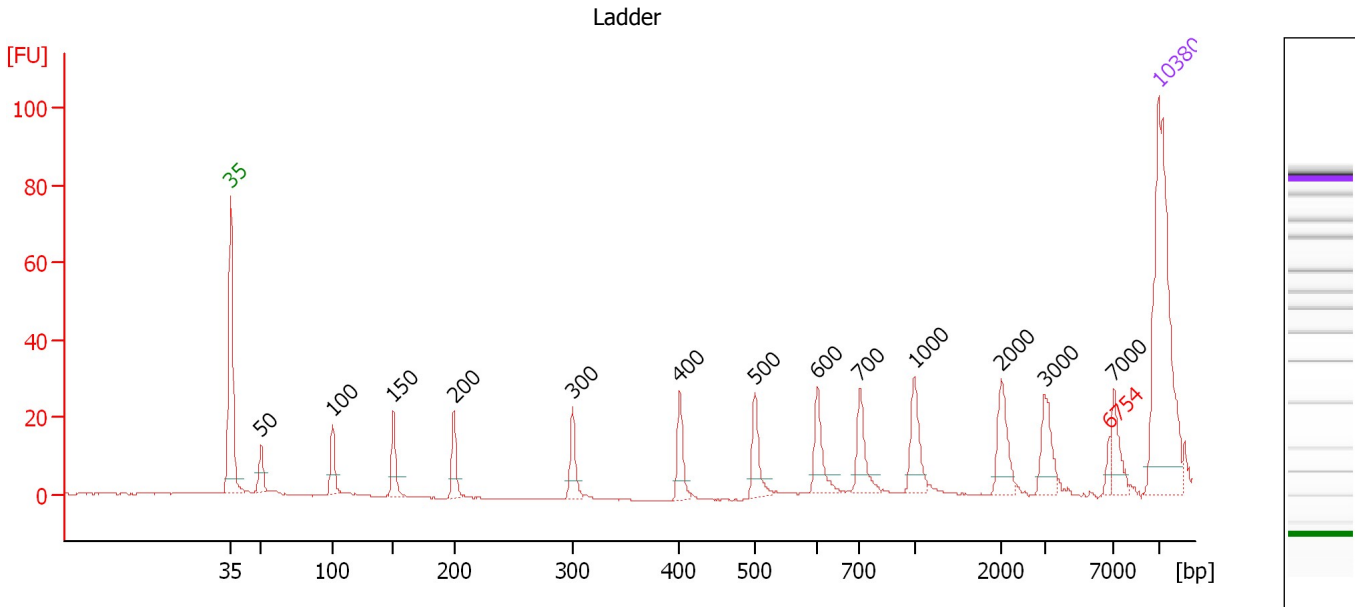
Ladder

Ladder Peak	Size	Area
1	35	160
2	50	210
3	100	208
4	150	221
5	200	242
6	300	270
7	400	305
8	500	306
9	600	336
10	700	321
11	1000	366
12	2000	413
13	3000	411
14	7000	400
15	10380	214

Assay Class: High Sensitivity DNA Assay
 Data Path: C:\...ents and Settings\Bioanalyzer\2013-10-17\2013-10-17_008.xad

Created: 10/17/2013 1:57:44 PM
 Modified: 10/17/2013 4:38:35 PM

Electropherogram Summary



Overall Results for Ladder

Noise: 0.1

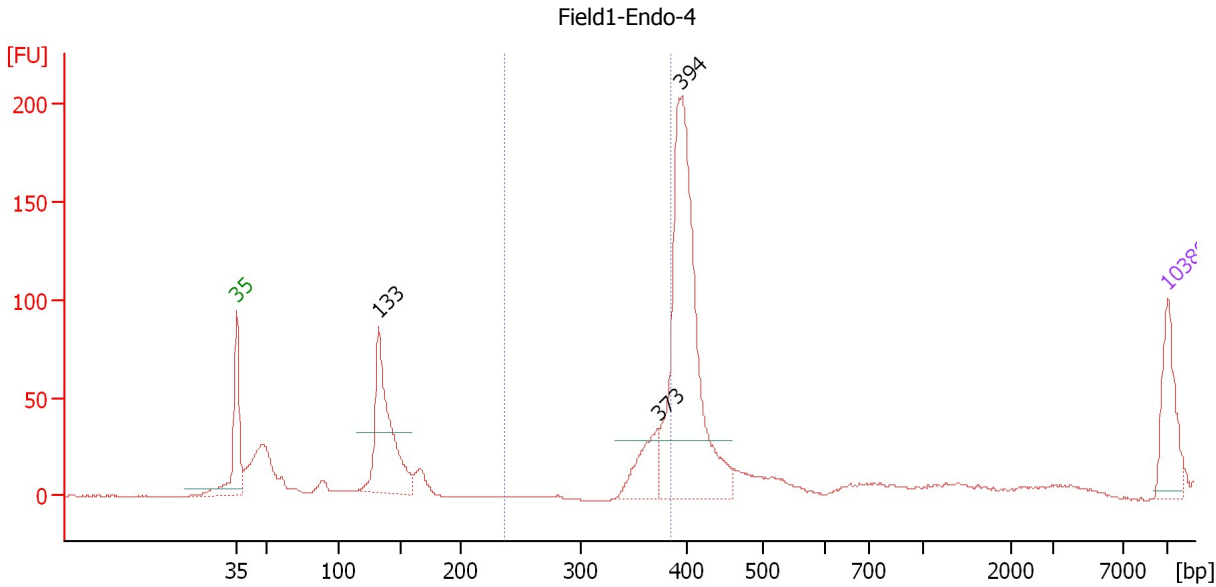
Peak table for Ladder

Peak	Size [bp]	Conc. [pg/μl]	Molarity [pmol/l]	Observations
1	35	125.00	5,411.3	Lower Marker
2	50	150.00	4,545.5	Ladder Peak
3	100	150.00	2,272.7	Ladder Peak
4	150	150.00	1,515.2	Ladder Peak
5	200	150.00	1,136.4	Ladder Peak
6	300	150.00	757.6	Ladder Peak
7	400	150.00	568.2	Ladder Peak
8	500	150.00	454.5	Ladder Peak
9	600	150.00	378.8	Ladder Peak
10	700	150.00	324.7	Ladder Peak
11	1,000	150.00	227.3	Ladder Peak
12	2,000	150.00	113.6	Ladder Peak
13	3,000	150.00	75.8	Ladder Peak
14	6,754	0.00	0.0	excluded peak
15	7,000	150.00	32.5	Ladder Peak
16	10,380	75.00	10.9	Upper Marker

Assay Class: High Sensitivity DNA Assay
 Data Path: C:\...ents and Settings\Bioanalyzer\2013-10-17\2013-10-17_008.xad

Created: 10/17/2013 1:57:44 PM
 Modified: 10/17/2013 4:38:35 PM

Electropherogram Summary Continued ...



Setpoint Deviations for sample 1 : Field1-Endo-4

Height Threshold [FU] : 30

Overall Results for sample 1 : Field1-Endo-4

Number of peaks found: 3 Corr. Area 1: 114.6
 Noise: 0.2

Peak table for sample 1 : Field1-Endo-4

Peak	Size [bp]	Conc. [pg/μl]	Molarity [pmol/l]	Observations
1	35	125.00	5,411.3	Lower Marker
2	133	309.14	3,525.3	
3	373	94.27	383.4	
4	394	616.99	2,373.5	
5	10,380	75.00	10.9	Upper Marker

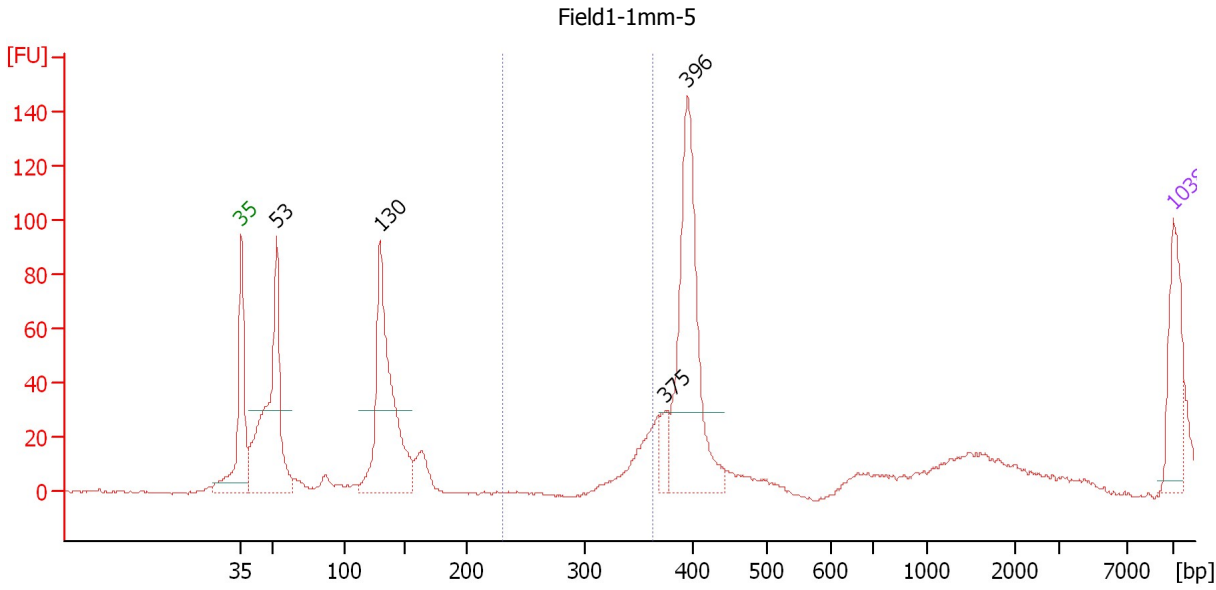
Region table for sample 1 : Field1-Endo-4

From [bp]	To [bp]	Average Size [bp]	Molarity [pmol/l]	Conc. [pg/μl]	Corr. Area	% of Total	Size distribution in CV [%]	Color
237	385	370	491.2	119.91	114.6	11	2.9	Blue

Assay Class: High Sensitivity DNA Assay
 Data Path: C:\...ents and Settings\Bioanalyzer\2013-10-17\2013-10-17_008.xad

Created: 10/17/2013 1:57:44 PM
 Modified: 10/17/2013 4:38:35 PM

Electropherogram Summary Continued ...



Setpoint Deviations for sample 2 : Field1-1mm-5

Height Threshold [FU] : 30

Overall Results for sample 2 : Field1-1mm-5

Number of peaks found: 4 Corr. Area 1: 6.3
 Noise: 0.4

Peak table for sample 2 : Field1-1mm-5

Peak	Size [bp]	Conc. [pg/μl]	Molarity [pmol/l]	Observations
1	35	125.00	5,411.3	Lower Marker
2	53	401.85	11,432.1	
3	130	396.70	4,630.4	
4	375	39.19	158.3	
5	396	365.68	1,399.7	
6	10,380	75.00	10.9	Upper Marker

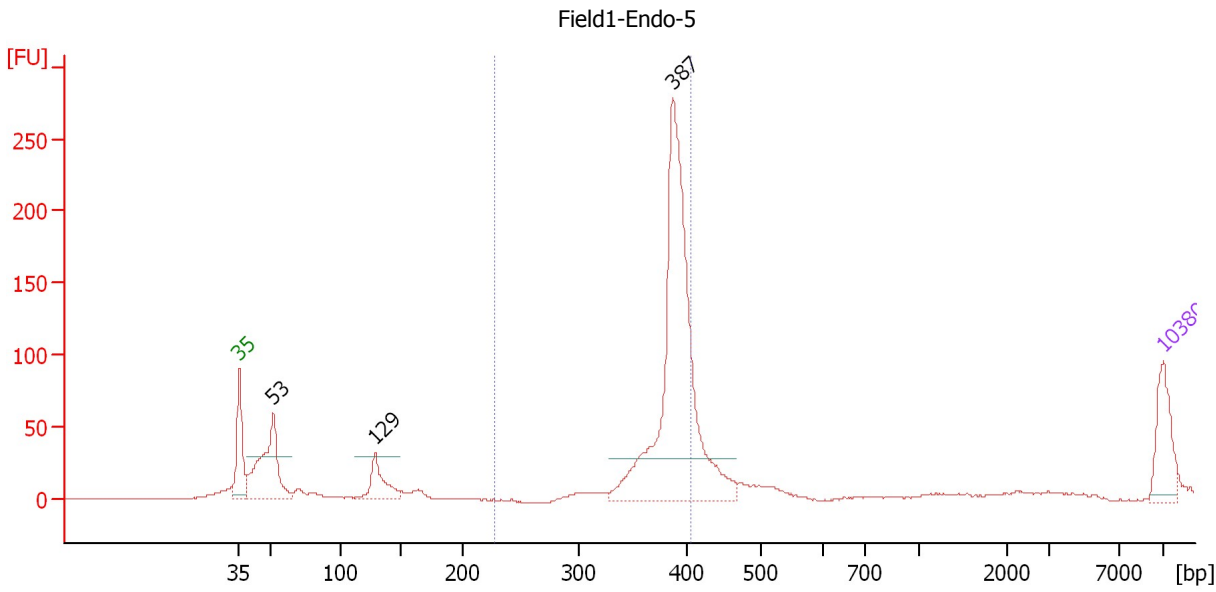
Region table for sample 2 : Field1-1mm-5

From [bp]	To [bp]	Average Size [bp]	Molarity [pmol/l]	Conc. [pg/μl]	Corr. Area	% of Total	Size distribution in CV [%]	Color
231	363	359	32.0	7.58	6.3	1	0.9	Blue

Assay Class: High Sensitivity DNA Assay
 Data Path: C:\...ents and Settings\Bioanalyzer\2013-10-17\2013-10-17_008.xad

Created: 10/17/2013 1:57:44 PM
 Modified: 10/17/2013 4:38:35 PM

Electropherogram Summary Continued ...



Setpoint Deviations for sample 3 : Field1-Endo-5

Height Threshold [FU] : 30

Overall Results for sample 3 : Field1-Endo-5

Number of peaks found: 3 Corr. Area 1: 671.0
 Noise: 0.3

Peak table for sample 3 : Field1-Endo-5

Peak	Size [bp]	Conc. [pg/μl]	Molarity [pmol/l]	Observations
1	35	125.00	5,411.3	Lower Marker
2	53	276.02	7,932.4	
3	129	98.76	1,163.7	
4	387	855.52	3,345.7	
5	10,380	75.00	10.9	Upper Marker

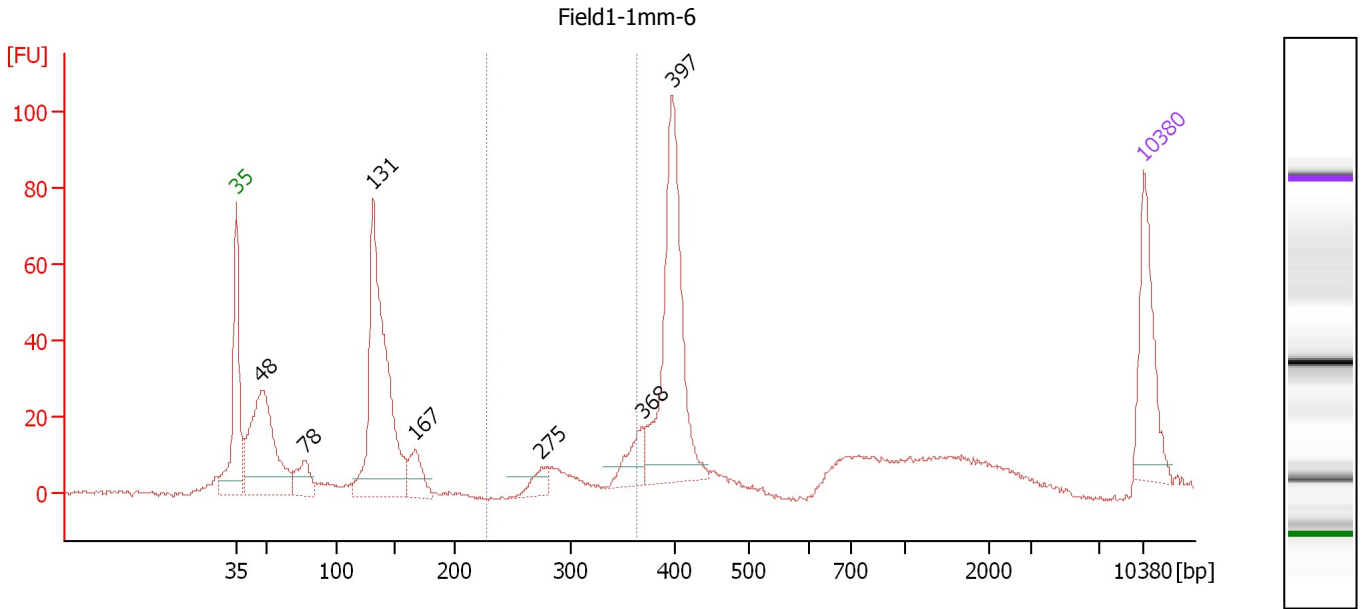
Region table for sample 3 : Field1-Endo-5

From [bp]	To [bp]	Average Size [bp]	Molarity [pmol/l]	Conc. [pg/μl]	Corr. Area	% of Total	Size distribution in CV [%]	Color
228	406	385	2,562.5	651.71	671.0	59	3.8	Blue

Assay Class: High Sensitivity DNA Assay
 Data Path: C:\...ents and Settings\Bioanalyzer\2013-10-17\2013-10-17_008.xad

Created: 10/17/2013 1:57:44 PM
 Modified: 10/17/2013 4:38:35 PM

Electropherogram Summary Continued ...



Overall Results for sample 4 : Field1-1mm-6

Number of peaks found: 7 Corr. Area 1: 46.2
 Noise: 0.6

Peak table for sample 4 : Field1-1mm-6

Peak	Size [bp]	Conc. [pg/μl]	Molarity [pmol/l]	Observations
1	35	125.00	5,411.3	Lower Marker
2	48	254.93	8,107.1	
3	78	46.36	905.6	
4	131	376.99	4,344.9	
5	167	44.80	406.7	
6	275	22.36	123.1	
7	368	39.16	161.2	
8	397	265.65	1,013.5	
9	10,380	75.00	10.9	Upper Marker

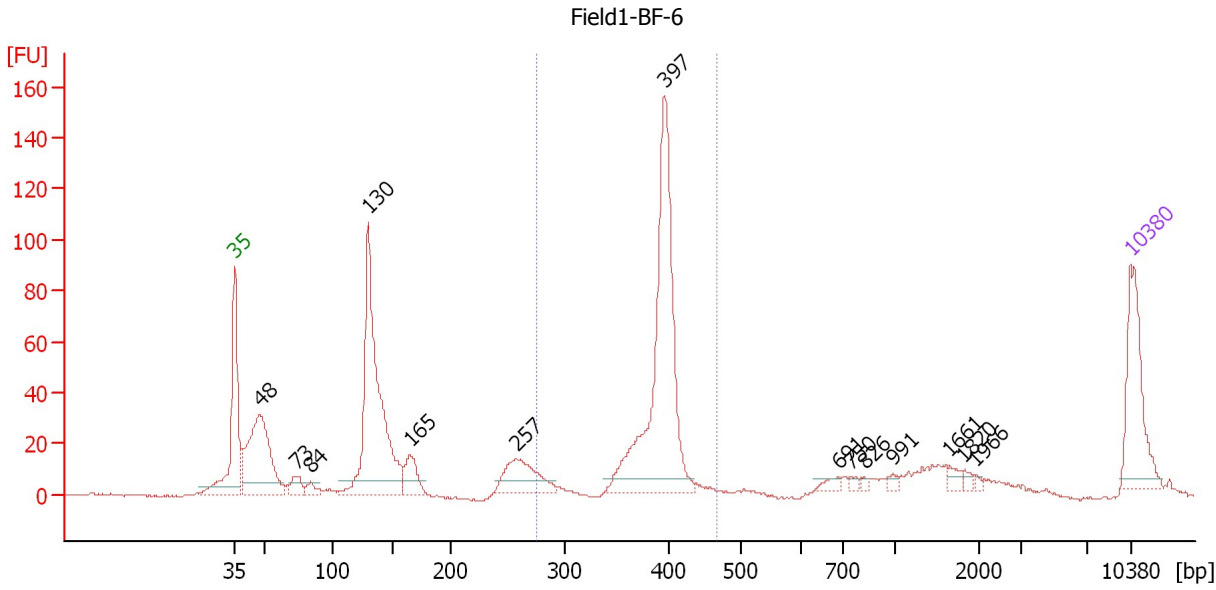
Region table for sample 4 : Field1-1mm-6

From [bp]	To [bp]	Average Size [bp]	Molarity [pmol/l]	Conc. [pg/μl]	Corr. Area	% of Total	Size distribution in CV [%]	Color
228	363	317	290.9	59.83	46.2	6	11.0	Blue

Assay Class: High Sensitivity DNA Assay
 Data Path: C:\...ents and Settings\Bioanalyzer\2013-10-17\2013-10-17_008.xad

Created: 10/17/2013 1:57:44 PM
 Modified: 10/17/2013 4:38:35 PM

Electropherogram Summary Continued ...



Overall Results for sample 5 : Field1-BF-6

Number of peaks found: 14 Corr. Area 1: 389.1
 Noise: 0.5

Peak table for sample 5 : Field1-BF-6

Peak	Size [bp]	Conc. [pg/μl]	Molarity [pmol/l]	Observations
1	35	125.00	5,411.3	Lower Marker
2	48	220.54	7,028.2	
3	73	23.26	484.0	
4	84	12.98	235.2	
5	130	371.32	4,332.4	
6	165	40.37	370.0	
7	257	76.04	447.8	
8	397	352.01	1,344.6	
9	691	8.44	18.5	
10	750	4.98	10.1	
11	826	2.99	5.5	
12	991	5.60	8.6	
13	1,661	7.98	7.3	
14	1,820	4.88	4.1	
15	1,966	2.67	2.1	
16	10,380	75.00	10.9	Upper Marker

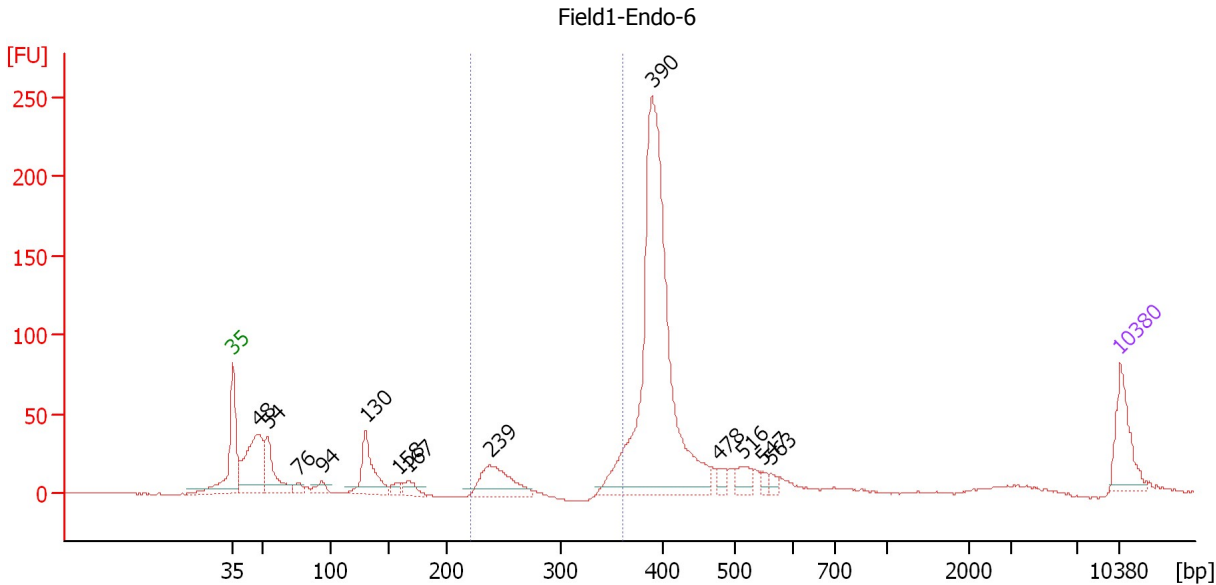
Region table for sample 5 : Field1-BF-6

From [bp]	To [bp]	Average Size [bp]	Molarity [pmol/l]	Conc. [pg/μl]	Corr. Area	% of Total	Size distribution in CV [%]	Color
276	467	389	1,538.8	391.50	389.1	37	7.0	Blue

Assay Class: High Sensitivity DNA Assay
 Data Path: C:\...ents and Settings\Bioanalyzer\2013-10-17\2013-10-17_008.xad

Created: 10/17/2013 1:57:44 PM
 Modified: 10/17/2013 4:38:35 PM

Electropherogram Summary Continued ...



Overall Results for sample 6 : Field1-Endo-6

Number of peaks found: 13 Corr. Area 1: 107.3
 Noise: 0.3

Peak table for sample 6 : Field1-Endo-6

Peak	Size [bp]	Conc. [pg/μl]	Molarity [pmol/l]	Observations
1	35	125.00	5,411.3	Lower Marker
2	48	243.02	7,637.9	
3	54	126.29	3,537.5	
4	76	17.88	354.9	
5	94	23.78	383.7	
6	130	134.88	1,566.9	
7	158	19.00	182.3	
8	167	30.07	272.7	
9	239	133.00	844.0	
10	390	963.33	3,742.5	
11	478	22.51	71.3	
12	516	37.10	108.9	
13	547	10.14	28.1	
14	563	11.38	30.7	
15	10,380	75.00	10.9	Upper Marker

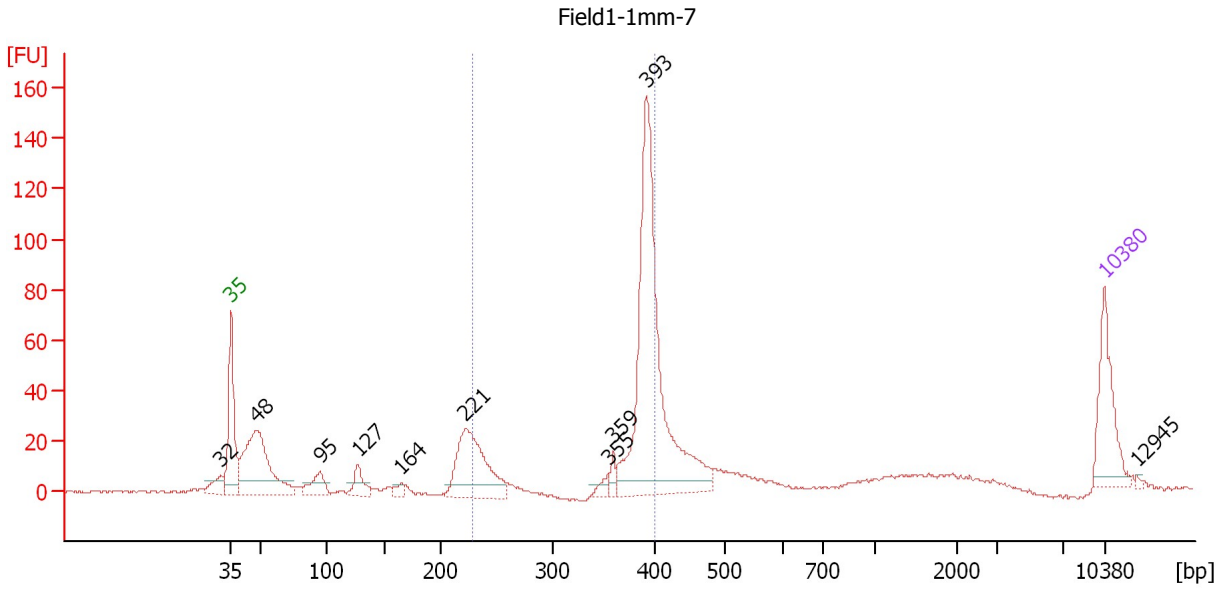
Region table for sample 6 : Field1-Endo-6

From [bp]	To [bp]	Average Size [bp]	Molarity [pmol/l]	Conc. [pg/μl]	Corr. Area	% of Total	Size distribution in CV [%]	Color
221	362	283	814.6	144.52	107.3	8	18.5	Blue

Assay Class: High Sensitivity DNA Assay
 Data Path: C:\...ents and Settings\Bioanalyzer\2013-10-17\2013-10-17_008.xad

Created: 10/17/2013 1:57:44 PM
 Modified: 10/17/2013 4:38:35 PM

Electropherogram Summary Continued ...



Overall Results for sample 7 : Field1-1mm-7

Number of peaks found: 10 Corr. Area 1: 331.8
 Noise: 0.5

Peak table for sample 7 : Field1-1mm-7

Peak	Size [bp]	Conc. [pg/μl]	Molarity [pmol/l]	Observations
1	32	0.00	0.0	
2	35	125.00	5,411.3	Lower Marker
3	48	251.25	7,954.2	
4	95	44.33	707.6	
5	127	38.62	460.4	
6	164	12.51	115.3	
7	221	187.62	1,284.4	
8	355	13.87	59.3	
9	359	14.00	59.0	
10	393	504.59	1,946.4	
11	10,380	75.00	10.9	Upper Marker
12	12,945	0.00	0.0	

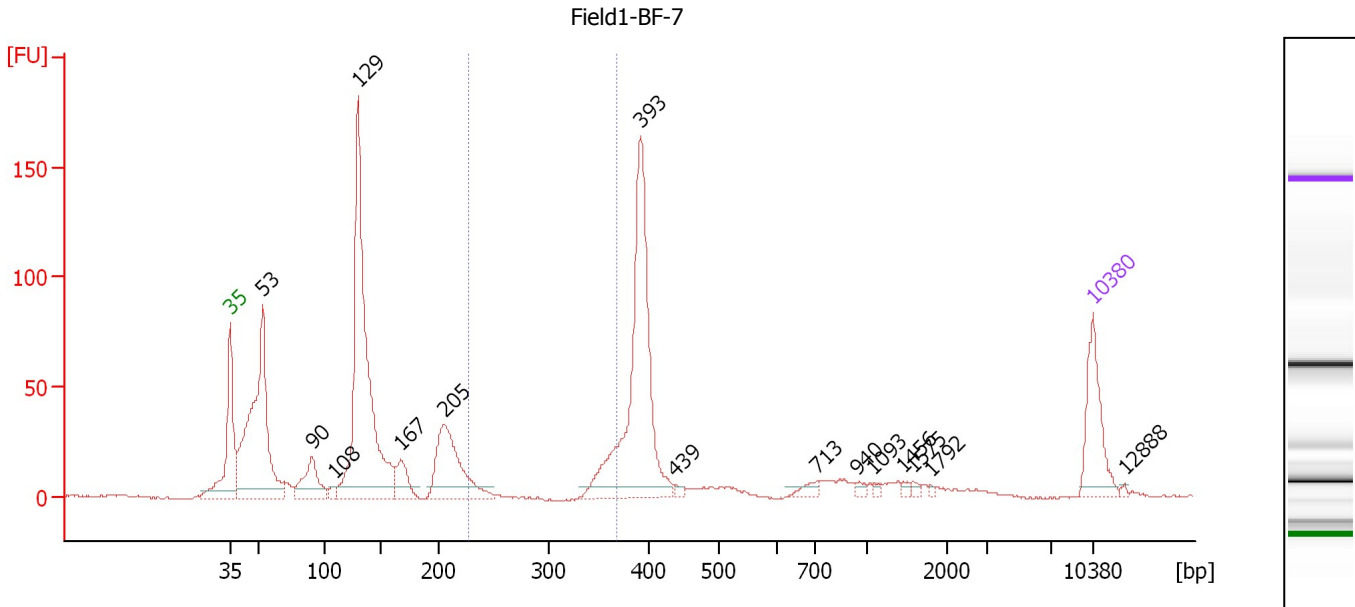
Region table for sample 7 : Field1-1mm-7

From [bp]	To [bp]	Average Size [bp]	Molarity [pmol/l]	Conc. [pg/μl]	Corr. Area	% of Total	Size distribution in CV [%]	Color
228	402	369	1,824.4	422.02	331.8	41	13.9	Blue

Assay Class: High Sensitivity DNA Assay
 Data Path: C:\...ents and Settings\Bioanalyzer\2013-10-17\2013-10-17_008.xad

Created: 10/17/2013 1:57:44 PM
 Modified: 10/17/2013 4:38:35 PM

Electropherogram Summary Continued ...



Overall Results for sample 8 : Field1-BF-7

Number of peaks found: 15 Corr. Area 1: 60.5
 Noise: 0.4

Peak table for sample 8 : Field1-BF-7

Peak	Size [bp]	Conc. [pg/μl]	Molarity [pmol/l]	Observations
1	35	125.00	5,411.3	Lower Marker
2	53	468.78	13,352.6	
3	90	90.91	1,522.2	
4	108	12.40	174.4	
5	129	643.06	7,532.0	
6	167	49.63	450.1	
7	205	181.27	1,337.2	
8	393	428.89	1,654.3	
9	439	6.40	22.1	
10	713	14.02	29.8	
11	940	7.00	11.3	
12	1,093	4.36	6.0	
13	1,456	4.53	4.7	
14	1,575	4.77	4.6	
15	1,792	2.49	2.1	
16	10,380	75.00	10.9	Upper Marker
17	12,888	0.00	0.0	

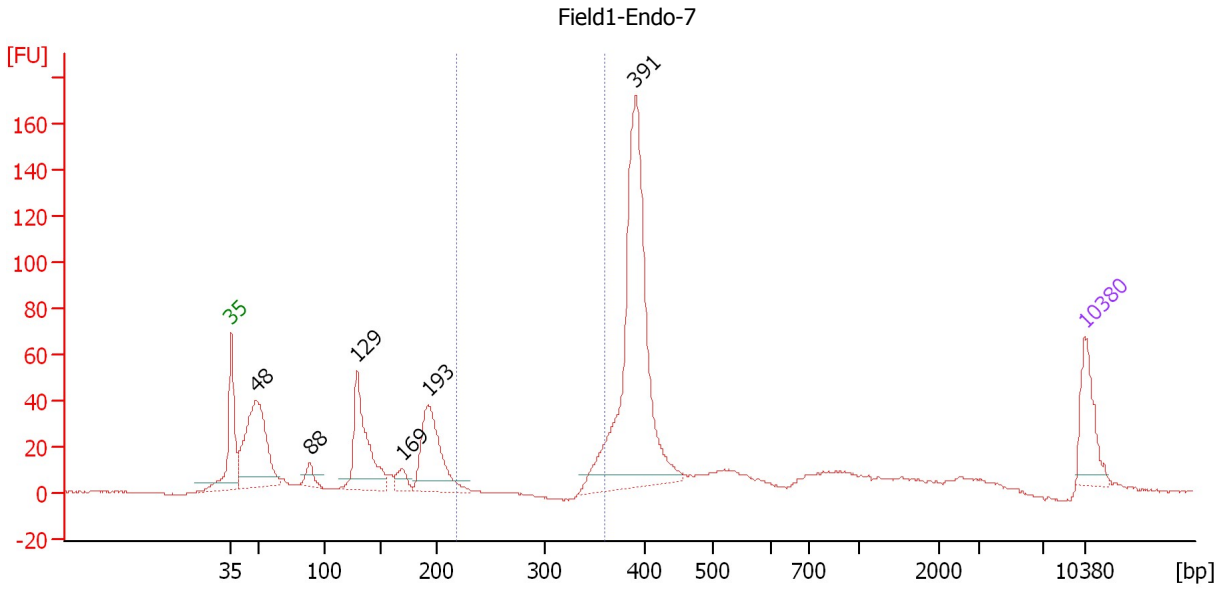
Region table for sample 8 : Field1-BF-7

From [bp]	To [bp]	Average Size [bp]	Molarity [pmol/l]	Conc. [pg/μl]	Corr. Area	% of Total	Size distribution in CV [%]	Color
227	369	332	354.3	73.73	60.5	4	15.1	Blue

Assay Class: High Sensitivity DNA Assay
 Data Path: C:\...ents and Settings\Bioanalyzer\2013-10-17\2013-10-17_008.xad

Created: 10/17/2013 1:57:44 PM
 Modified: 10/17/2013 4:38:35 PM

Electropherogram Summary Continued ...



Overall Results for sample 9 : Field1-Endo-7

Number of peaks found: 6 Corr. Area 1: 30.6
 Noise: 0.2

Peak table for sample 9 : Field1-Endo-7

Peak	Size [bp]	Conc. [pg/μl]	Molarity [pmol/l]	Observations
1	35	125.00	5,411.3	Lower Marker
2	48	374.24	11,703.1	
3	88	34.12	585.0	
4	129	253.67	2,984.2	
5	169	34.12	305.3	
6	193	225.03	1,769.3	
7	391	708.13	2,742.6	
8	10,380	75.00	10.9	Upper Marker

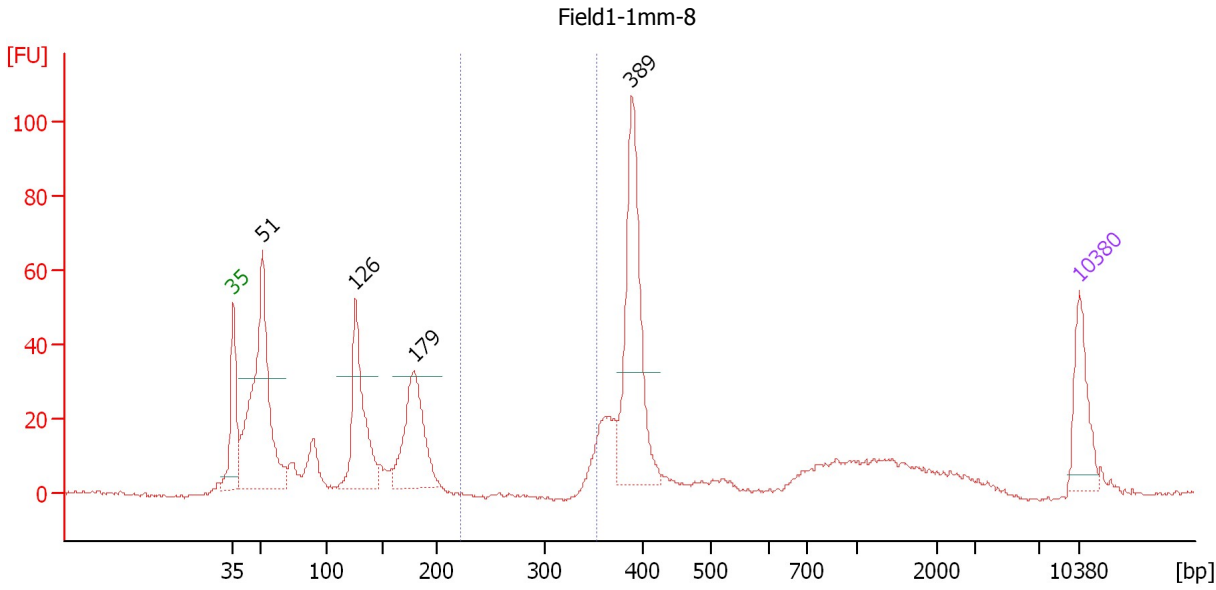
Region table for sample 9 : Field1-Endo-7

From [bp]	To [bp]	Average Size [bp]	Molarity [pmol/l]	Conc. [pg/μl]	Corr. Area	% of Total	Size distribution in CV [%]	Color
218	359	334	227.5	47.95	30.6	3	13.2	Blue

Assay Class: High Sensitivity DNA Assay
 Data Path: C:\...ents and Settings\Bioanalyzer\2013-10-17\2013-10-17_008.xad

Created: 10/17/2013 1:57:44 PM
 Modified: 10/17/2013 4:38:35 PM

Electropherogram Summary Continued ...



Setpoint Deviations for sample 10 : Field1-1mm-8

Height Threshold [FU] : 30

Overall Results for sample 10 : Field1-1mm-8

Number of peaks found: 4 Corr. Area 1: 10.7
 Noise: 0.6

Peak table for sample 10 : Field1-1mm-8

Peak	Size [bp]	Conc. [pg/μl]	Molarity [pmol/l]	Observations
1	35	125.00	5,411.3	Lower Marker
2	51	542.43	16,171.0	
3	126	263.83	3,163.8	
4	179	234.13	1,984.4	
5	389	347.80	1,356.2	
6	10,380	75.00	10.9	Upper Marker

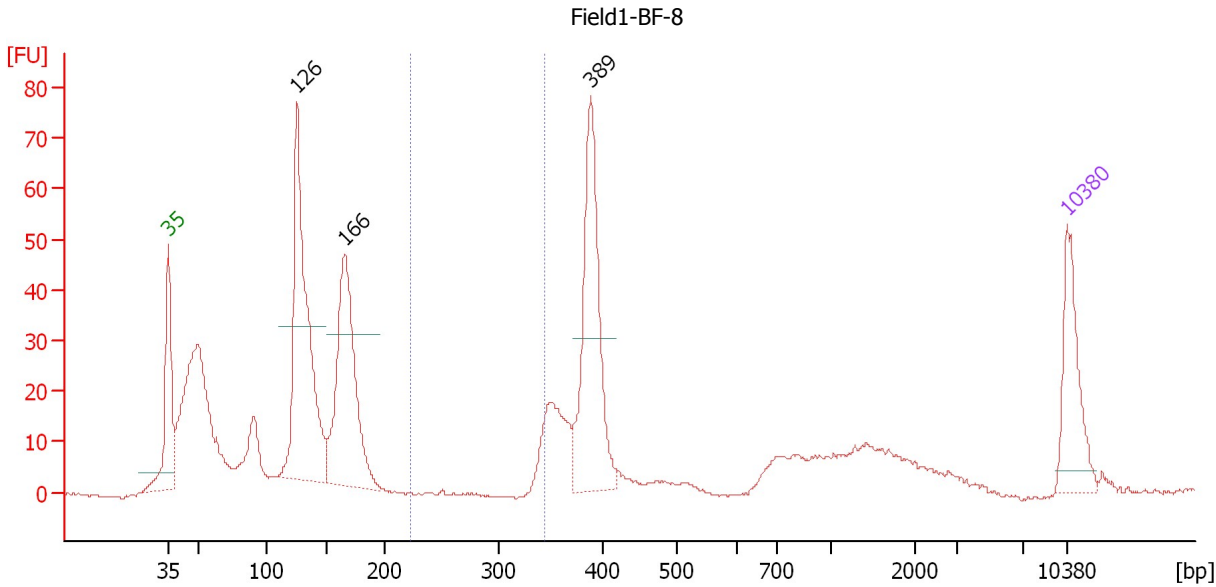
Region table for sample 10 : Field1-1mm-8

From [bp]	To [bp]	Average Size [bp]	Molarity [pmol/l]	Conc. [pg/μl]	Corr. Area	% of Total	Size distribution in CV [%]	Color
222	353	347	87.8	20.11	10.7	1	1.1	Blue

Assay Class: High Sensitivity DNA Assay
 Data Path: C:\...ents and Settings\Bioanalyzer\2013-10-17\2013-10-17_008.xad

Created: 10/17/2013 1:57:44 PM
 Modified: 10/17/2013 4:38:35 PM

Electropherogram Summary Continued ...



Setpoint Deviations for sample 11 : Field1-BF-8

Height Threshold [FU] : 30

Overall Results for sample 11 : Field1-BF-8

Number of peaks found: 3 Corr. Area 1: 8.2
 Noise: 0.3

Peak table for sample 11 : Field1-BF-8

Peak	Size [bp]	Conc. [pg/μl]	Molarity [pmol/l]	Observations
1	35	125.00	5,411.3	Lower Marker
2	126	401.79	4,841.7	
3	166	295.86	2,698.3	
4	389	245.71	958.2	
5	10,380	75.00	10.9	Upper Marker

Region table for sample 11 : Field1-BF-8

From [bp]	To [bp]	Average Size [bp]	Molarity [pmol/l]	Conc. [pg/μl]	Corr. Area	% of Total	Size distribution in CV [%]	Color
222	343	339	65.7	14.68	8.2	1	2.0	Blue

Assay Class: High Sensitivity DNA Assay
Data Path: C:\...ents and Settings\Bioanalyzer\2013-10-17\2013-10-17_008.xad

Created: 10/17/2013 1:57:44 PM
Modified: 10/17/2013 4:38:35 PM

Gel Image

