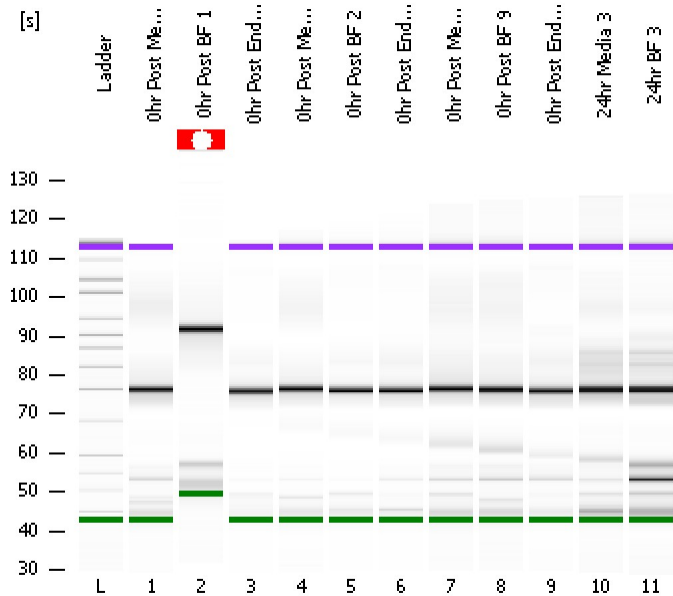


Assay Class: High Sensitivity DNA Assay  
Data Path: C:\...ents and Settings\Bioanalyzer\2013-10-17\2013-10-17\_009.xad

Created: 10/17/2013 3:15:26 PM  
Modified: 10/17/2013 4:43:19 PM

### Electrophoresis File Run Summary



#### Instrument Information:

Instrument Name: DE13701086      Firmware: C.01.069  
Serial#: DE13701086      Type: G2938B

#### Assay Information:

Assay Origin Path: C:\Program Files\Agilent\2100 bioanalyzer\2100 expert\assays\dsDNA\High Sensitivity DNA.xsy  
Assay Class: High Sensitivity DNA Assay  
Version: 1.03  
Assay Comments: Copyright © 2003-2010 Agilent Technologies

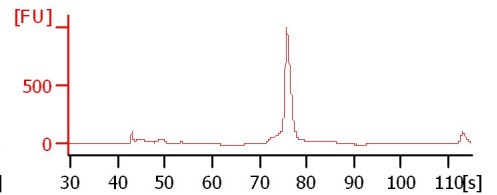
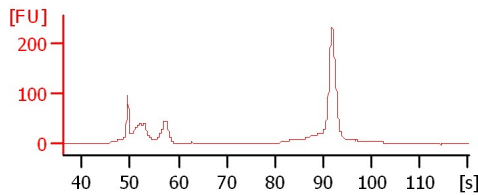
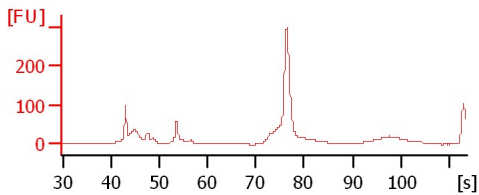
#### Chip Information:

Chip Lot #:   
Reagent Kit Lot #:   
Chip Comments:

Ohr Post Media 1

Ohr Post BF 1

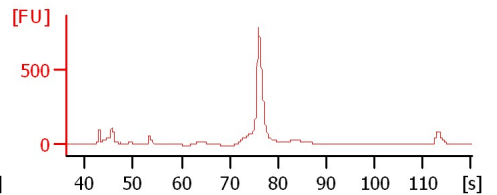
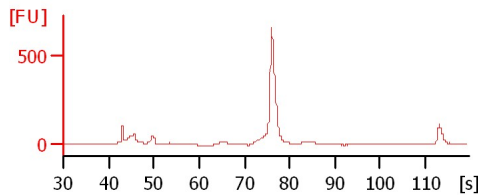
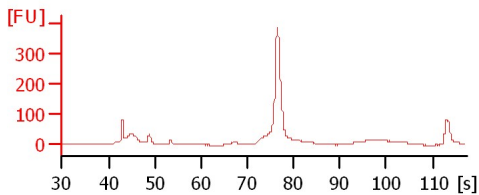
Ohr Post Endo 1



Ohr Post Media 2

Ohr Post BF 2

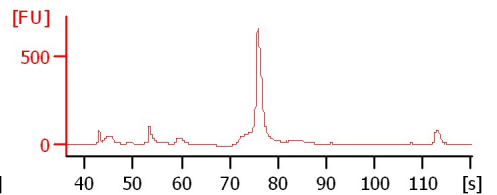
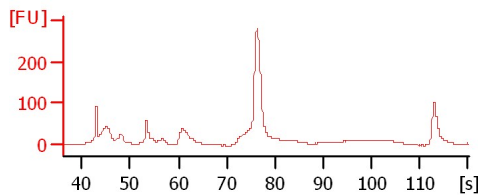
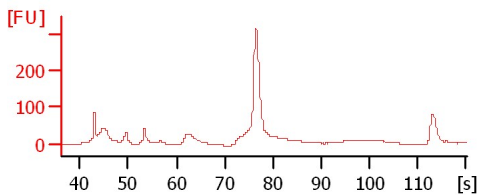
Ohr Post Endo 2



Ohr Post Media 9

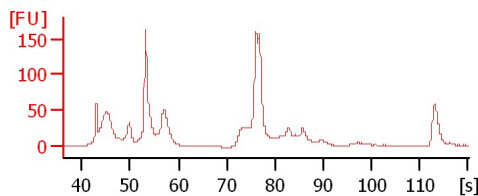
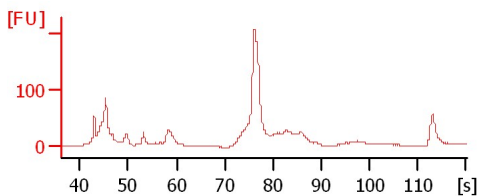
Ohr Post BF 9

Ohr Post Endo 9



24hr Media 3

24hr BF 3



Assay Class: High Sensitivity DNA Assay  
Data Path: C:\...ents and Settings\Bioanalyzer\2013-10-17\2013-10-17\_009.xad

Created: 10/17/2013 3:15:26 PM  
Modified: 10/17/2013 4:43:19 PM

**Electrophoresis File Run Summary (Chip Summary)**

Sample Name	Sample Comment	Rest. Digest	Status	Observation	Result Label	Result Color
0hr Post Media 1		<input type="checkbox"/>	✓			
0hr Post BF 1		<input type="checkbox"/>	✓			
0hr Post Endo 1		<input type="checkbox"/>	✓			
0hr Post Media2		<input type="checkbox"/>	✓			
0hr Post BF 2		<input type="checkbox"/>	✓			
0hr Post Endo 2		<input type="checkbox"/>	✓			
0hr Post Media 9		<input type="checkbox"/>	✓			
0hr Post BF 9		<input type="checkbox"/>	✓			
0hr Post Endo 9		<input type="checkbox"/>	✓			
24hr Media 3		<input type="checkbox"/>	✓			
24hr BF 3		<input type="checkbox"/>	✓			
Ladder		<input type="checkbox"/>	✓			

**Chip Lot #**

**Reagent Kit Lot #**

**Chip Comments :**

Assay Class: High Sensitivity DNA Assay  
Data Path: C:\...ents and Settings\Bioanalyzer\2013-10-17\2013-10-17\_009.xad

Created: 10/17/2013 3:15:26 PM  
Modified: 10/17/2013 4:43:19 PM

**Electrophoresis Assay Details**

**General Analysis Settings**

Number of Available Sample and Ladder Wells (Max.) : 12  
Minimum Visible Range [s] : 32  
Maximum Visible Range [s] : 138  
Start Analysis Time Range [s] : 33  
End Analysis Time Range [s] : 137.5  
Ladder Concentration [pg/μl] : 1950  
Uses Standard Area for Ladder Fragments  
Lower Marker Concentration [pg/μl] : 125  
Upper Marker Concentration [pg/μl] : 75  
Used Upper Marker for Quantitation  
Standard Curve Fit is Point to Point  
Show Data Aligned to Lower and Upper Marker

**Integrator Settings**

Integration Start Time [s] : 33.05  
Integration End Time [s] : 137  
Slope Threshold : 0.8  
Height Threshold [FU] : 5  
Area Threshold : 0.1  
Width Threshold [s] : 0.6  
Baseline Plateau [s] : 0.5

**Filter Settings**

Filter Width [s] : 0.5  
Polynomial Order : 4

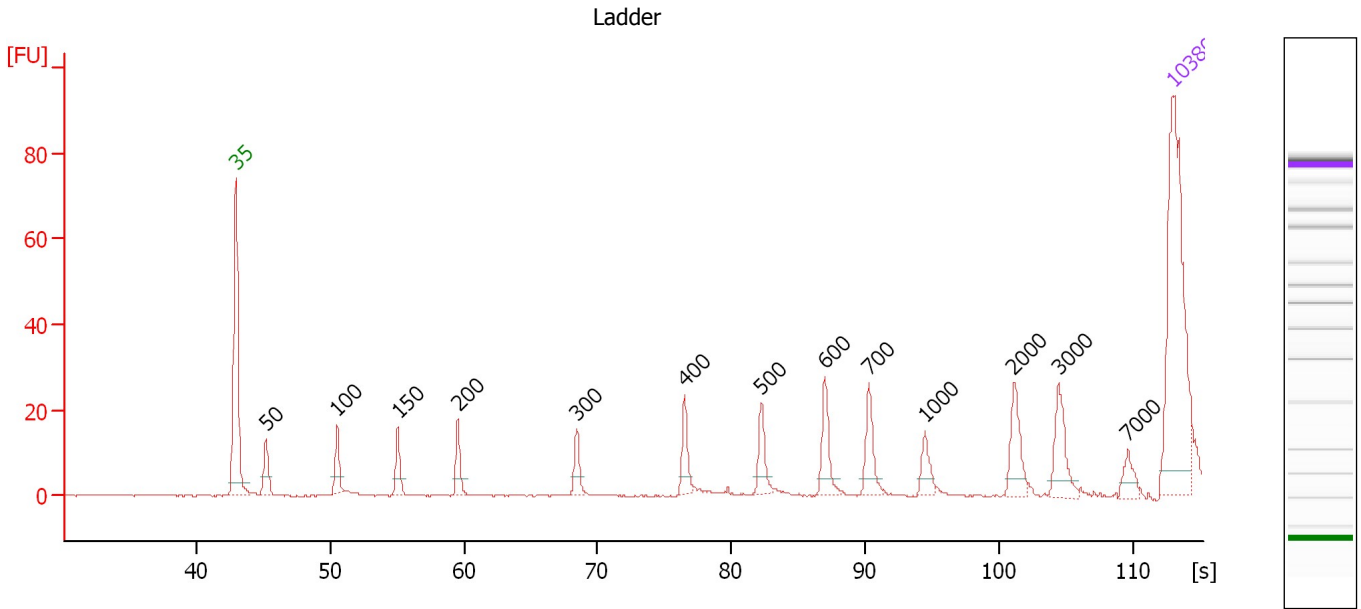
**Ladder**

Ladder Peak	Size	Area
1	35	160
2	50	210
3	100	208
4	150	221
5	200	242
6	300	270
7	400	305
8	500	306
9	600	336
10	700	321
11	1000	366
12	2000	413
13	3000	411
14	7000	400
15	10380	214

Assay Class: High Sensitivity DNA Assay  
 Data Path: C:\...ents and Settings\Bioanalyzer\2013-10-17\2013-10-17\_009.xad

Created: 10/17/2013 3:15:26 PM  
 Modified: 10/17/2013 4:43:19 PM

**Electropherogram Summary**



**Overall Results for Ladder**

Noise: 0.1

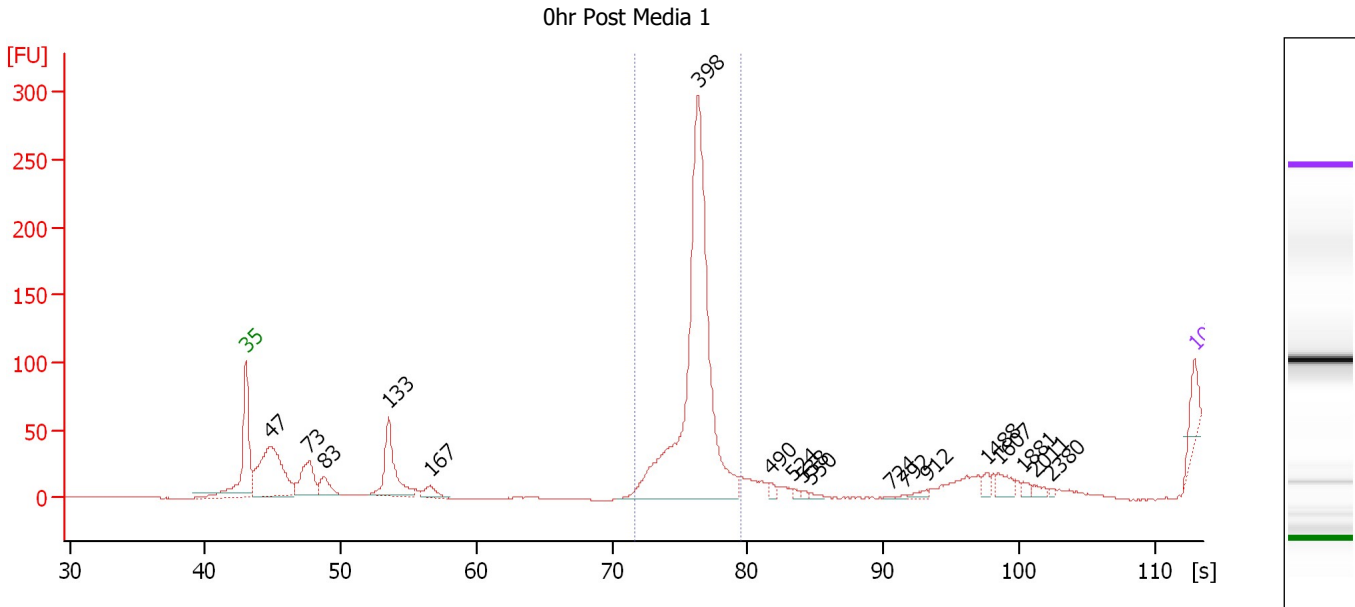
**Peak table for Ladder**

Peak	Size [bp]	Conc. [pg/μl]	Molarity [pmol/l]	Observations
1	35	125.00	5,411.3	Lower Marker
2	50	150.00	4,545.5	Ladder Peak
3	100	150.00	2,272.7	Ladder Peak
4	150	150.00	1,515.2	Ladder Peak
5	200	150.00	1,136.4	Ladder Peak
6	300	150.00	757.6	Ladder Peak
7	400	150.00	568.2	Ladder Peak
8	500	150.00	454.5	Ladder Peak
9	600	150.00	378.8	Ladder Peak
10	700	150.00	324.7	Ladder Peak
11	1,000	150.00	227.3	Ladder Peak
12	2,000	150.00	113.6	Ladder Peak
13	3,000	150.00	75.8	Ladder Peak
14	7,000	150.00	32.5	Ladder Peak
15	10,380	75.00	10.9	Upper Marker

Assay Class: High Sensitivity DNA Assay  
 Data Path: C:\...ents and Settings\Bioanalyzer\2013-10-17\2013-10-17\_009.xad

Created: 10/17/2013 3:15:26 PM  
 Modified: 10/17/2013 4:43:19 PM

**Electropherogram Summary Continued ...**



**Setpoint Deviations for sample 1 : 0hr Post Media 1**

Height Threshold [FU] : 0.05                      Area Threshold : 0.5

**Overall Results for sample 1 : 0hr Post Media 1**

Number of peaks found: 18                      Corr. Area 1: 364.0  
 Noise: 0.2

**Peak table for sample 1 : 0hr Post Media 1**

Peak	Size [bp]	Conc. [pg/μl]	Molarity [pmol/l]	Observations
1	35	125.00	5,411.3	Lower Marker
2	47	656.16	21,080.5	
3	73	225.63	4,689.2	
4	83	87.80	1,595.7	
5	133	346.00	3,942.2	
6	167	56.70	515.1	
7	398	1,839.81	7,003.4	
8	490	21.29	65.8	
9	524	10.04	29.0	
10	538	7.40	20.9	
11	550	9.68	26.7	
12	724	1.54	3.2	
13	792	3.50	6.7	
14	912	15.50	25.7	
15	1,488	23.42	23.8	
16	1,607	42.02	39.6	
17	1,881	15.78	12.7	
18	2,011	17.15	12.9	
19	2,380	6.28	4.0	
20	10,380	75.00	10.9	Upper Marker

Assay Class: High Sensitivity DNA Assay  
Data Path: C:\...ents and Settings\Bioanalyzer\2013-10-17\2013-10-17\_009.xad

Created: 10/17/2013 3:15:26 PM  
Modified: 10/17/2013 4:43:19 PM

**Electropherogram Summary Continued ...**

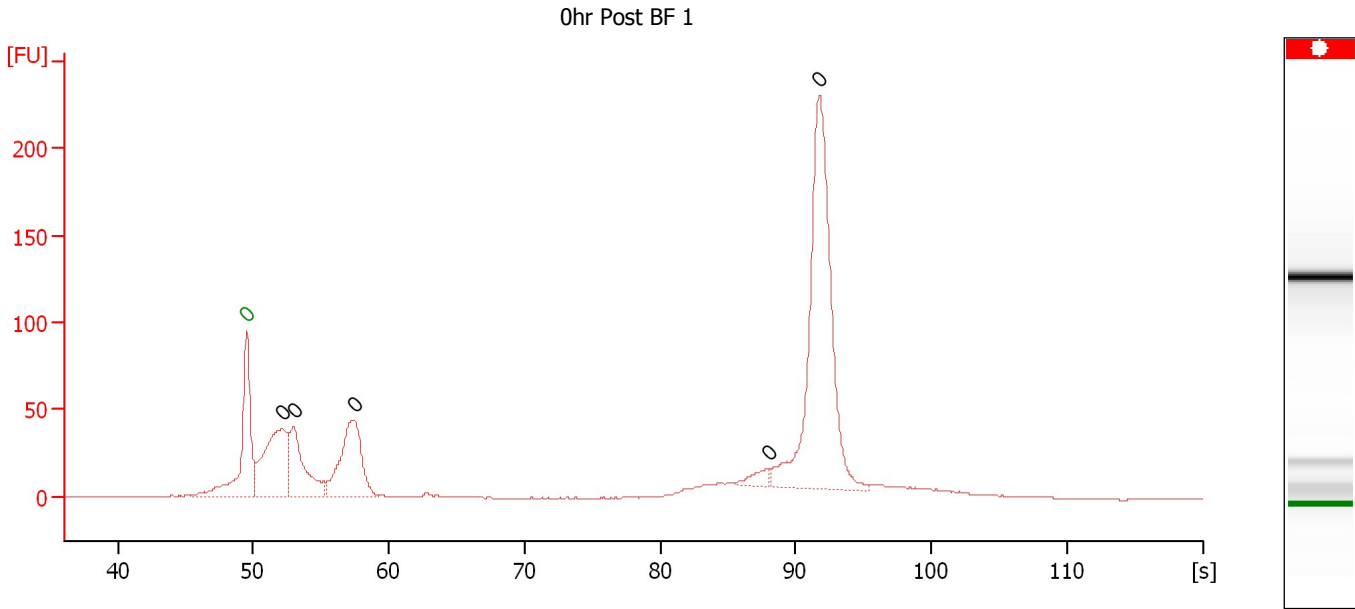
... Region table for sample 1 : 0hr Post Media 1

From [bp]	To [bp]	Average Size [bp]	Molarity [pmol/l]	Conc. [pg/μl]	Corr. Area	% of Total	Size distribution in CV [%]	Color
340	453	399	3,368.7	887.85	364.0	79	1.5	■

Assay Class: High Sensitivity DNA Assay  
 Data Path: C:\...ents and Settings\Bioanalyzer\2013-10-17\2013-10-17\_009.xad

Created: 10/17/2013 3:15:26 PM  
 Modified: 10/17/2013 4:43:19 PM

**Electropherogram Summary Continued ...**



**Overall Results for sample 2 : 0hr Post BF 1**

Number of peaks found: 5      Noise: 0.3

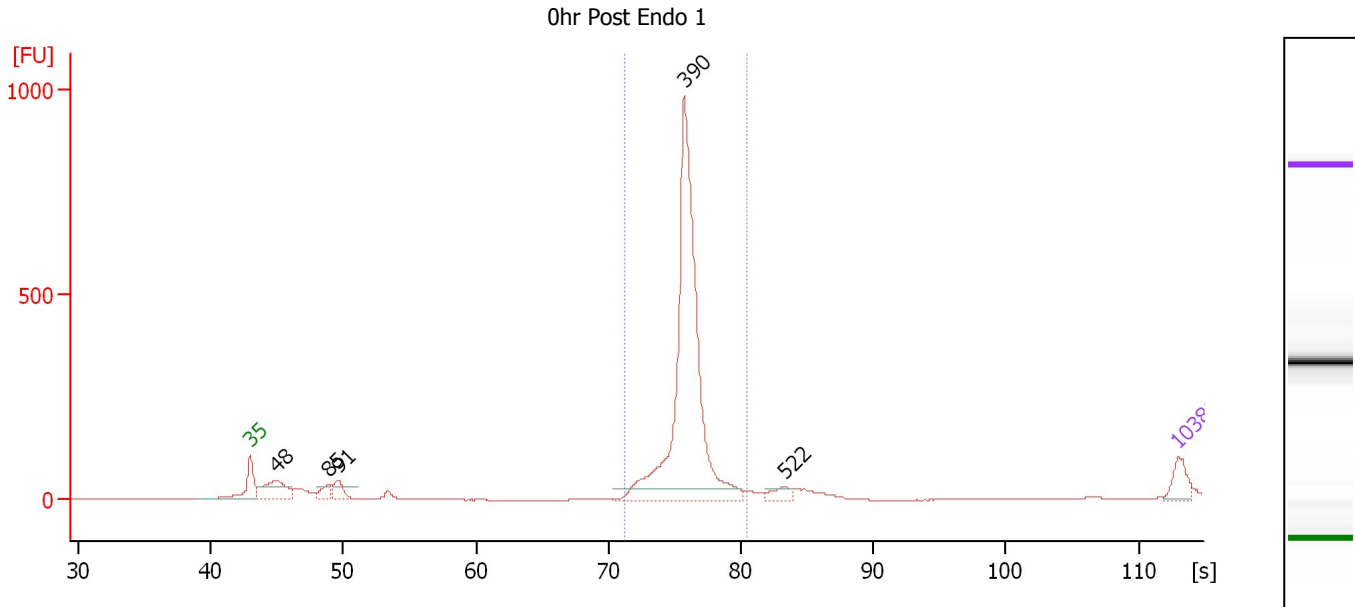
**Peak table for sample 2 : 0hr Post BF 1**

Peak	Size [bp]	Conc. [pg/μl]	Molarity [pmol/l]	Observations
1	0	0.00	0.0	Lower Marker
2	0	0.00	0.0	
3	0	0.00	0.0	
4	0	0.00	0.0	
5	0	0.00	0.0	
6	0	0.00	0.0	

Assay Class: High Sensitivity DNA Assay  
 Data Path: C:\...ents and Settings\Bioanalyzer\2013-10-17\2013-10-17\_009.xad

Created: 10/17/2013 3:15:26 PM  
 Modified: 10/17/2013 4:43:19 PM

**Electropherogram Summary Continued ...**



**Setpoint Deviations for sample 3 : 0hr Post Endo 1**

Height Threshold [FU] : 30

**Overall Results for sample 3 : 0hr Post Endo 1**

Number of peaks found: 5                      Corr. Area 1: 2,174.6  
 Noise: 0.2

**Peak table for sample 3 : 0hr Post Endo 1**

Peak	Size [bp]	Conc. [pg/μl]	Molarity [pmol/l]	Observations
1	35	125.00	5,411.3	Lower Marker
2	48	289.72	9,109.9	
3	85	86.22	1,541.9	
4	91	113.08	1,878.8	
5	390	2,122.26	8,236.1	
6	522	57.90	168.2	
7	10,380	75.00	10.9	Upper Marker

**Region table for sample 3 : 0hr Post Endo 1**

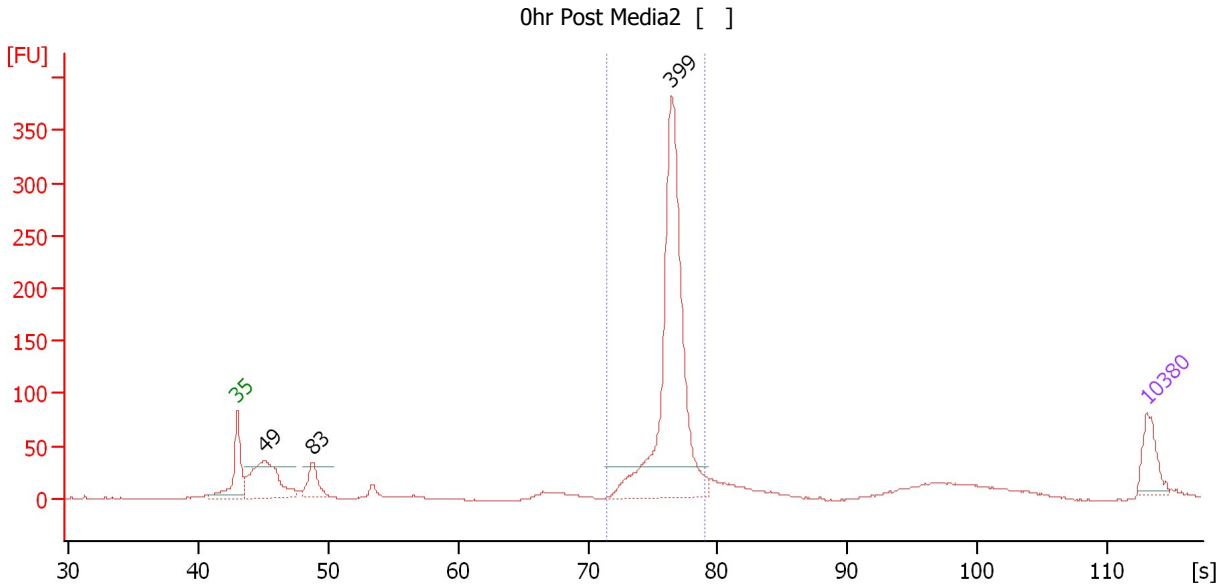
From [bp]	To [bp]	Average Size [bp]	Molarity [pmol/l]	Conc. [pg/μl]	Corr. Area	% of Total	Size distribution in CV [%]	Color
334	468	393	7,527.5	1,952.22	2,174.6	82	4.1	Blue



Assay Class: High Sensitivity DNA Assay  
 Data Path: C:\...ents and Settings\Bioanalyzer\2013-10-17\2013-10-17\_009.xad

Created: 10/17/2013 3:15:26 PM  
 Modified: 10/17/2013 4:43:19 PM

**Electropherogram Summary Continued ...**



**Setpoint Deviations for sample 4 : 0hr Post Media2**

Height Threshold [FU] : 30

**Overall Results for sample 4 : 0hr Post Media2**

Number of peaks found: 3                      Corr. Area 1: 896.4  
 Noise: 0.3

**Peak table for sample 4 : 0hr Post Media2**

Peak	Size [bp]	Conc. [pg/μl]	Molarity [pmol/l]	Observations
1	35	125.00	5,411.3	Lower Marker
2	49	367.11	11,333.1	
3	83	117.74	2,137.9	
4	399	1,072.80	4,069.5	
5	10,380	75.00	10.9	Upper Marker

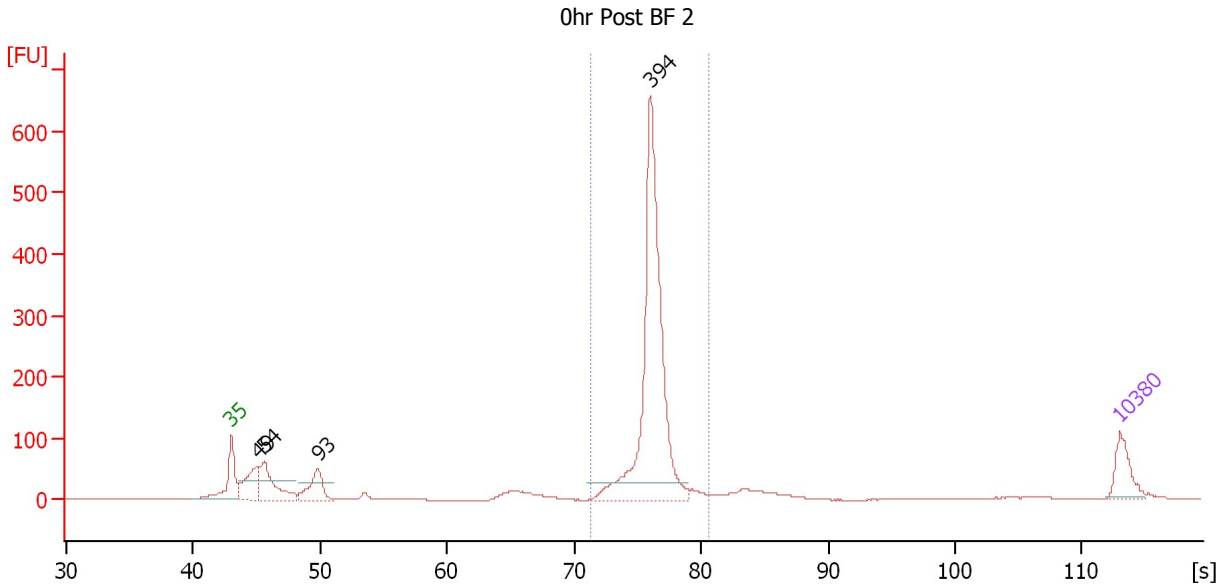
**Region table for sample 4 : 0hr Post Media2**

From [bp]	To [bp]	Average Size [bp]	Molarity [pmol/l]	Conc. [pg/μl]	Corr. Area	% of Total	Size distribution in CV [%]	Color
338	445	400	4,054.9	1,068.46	896.4	62	4.0	Blue

Assay Class: High Sensitivity DNA Assay  
 Data Path: C:\...ents and Settings\Bioanalyzer\2013-10-17\2013-10-17\_009.xad

Created: 10/17/2013 3:15:26 PM  
 Modified: 10/17/2013 4:43:19 PM

**Electropherogram Summary Continued ...**



**Setpoint Deviations for sample 5 : 0hr Post BF 2**

Height Threshold [FU] : 30

**Overall Results for sample 5 : 0hr Post BF 2**

Number of peaks found: 4                      Corr. Area 1: 1,376.2  
 Noise: 0.4

**Peak table for sample 5 : 0hr Post BF 2**

Peak	Size [bp]	Conc. [pg/μl]	Molarity [pmol/l]	Observations
1	35	125.00	5,411.3	Lower Marker
2	49	189.64	5,883.4	
3	54	219.97	6,223.8	
4	93	152.54	2,482.7	
5	394	1,110.50	4,273.3	
6	10,380	75.00	10.9	Upper Marker

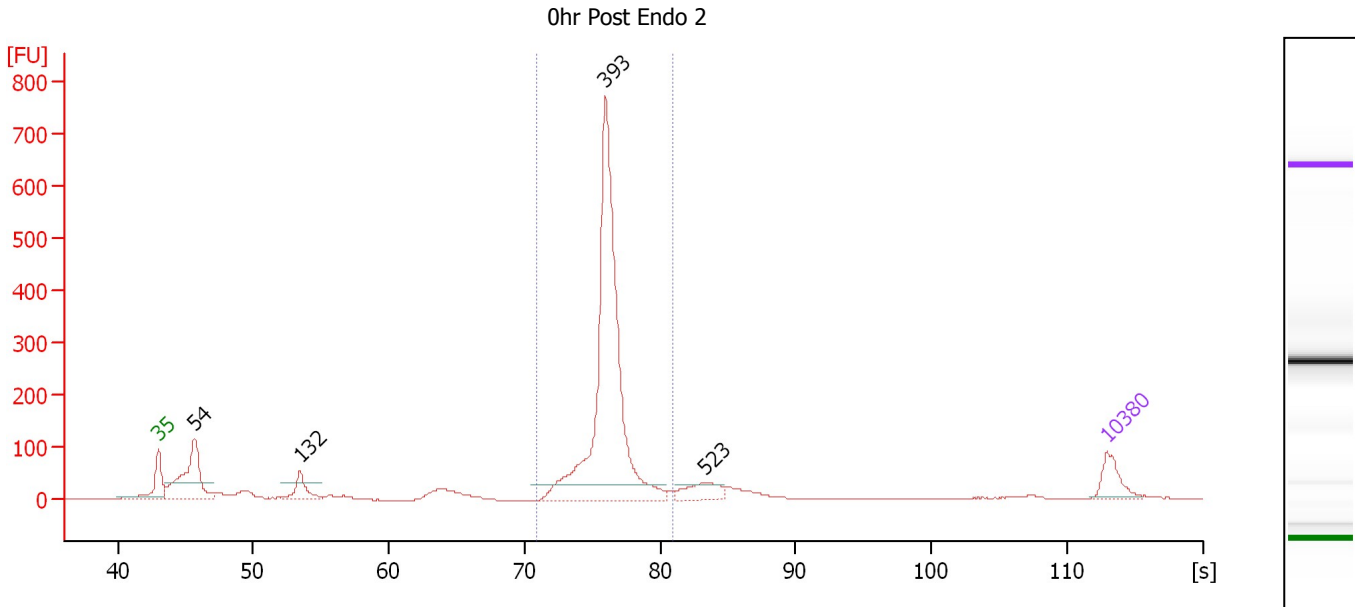
**Region table for sample 5 : 0hr Post BF 2**

From [bp]	To [bp]	Average Size [bp]	Molarity [pmol/l]	Conc. [pg/μl]	Corr. Area	% of Total	Size distribution in CV [%]	Color
336	473	397	4,241.8	1,109.85	1,376.2	67	4.2	Blue

Assay Class: High Sensitivity DNA Assay  
 Data Path: C:\...ents and Settings\Bioanalyzer\2013-10-17\2013-10-17\_009.xad

Created: 10/17/2013 3:15:26 PM  
 Modified: 10/17/2013 4:43:19 PM

**Electropherogram Summary Continued ...**



**Setpoint Deviations for sample 6 : 0hr Post Endo 2**

Height Threshold [FU] : 30

**Overall Results for sample 6 : 0hr Post Endo 2**

Number of peaks found: 4                      Corr. Area 1: 1,727.6  
 Noise: 0.3

**Peak table for sample 6 : 0hr Post Endo 2**

Peak	Size [bp]	Conc. [pg/μl]	Molarity [pmol/l]	Observations
1	35	125.00	5,411.3	Lower Marker
2	54	461.97	12,945.6	
3	132	111.40	1,277.9	
4	393	1,617.91	6,234.1	
5	523	107.93	312.5	
6	10,380	75.00	10.9	Upper Marker

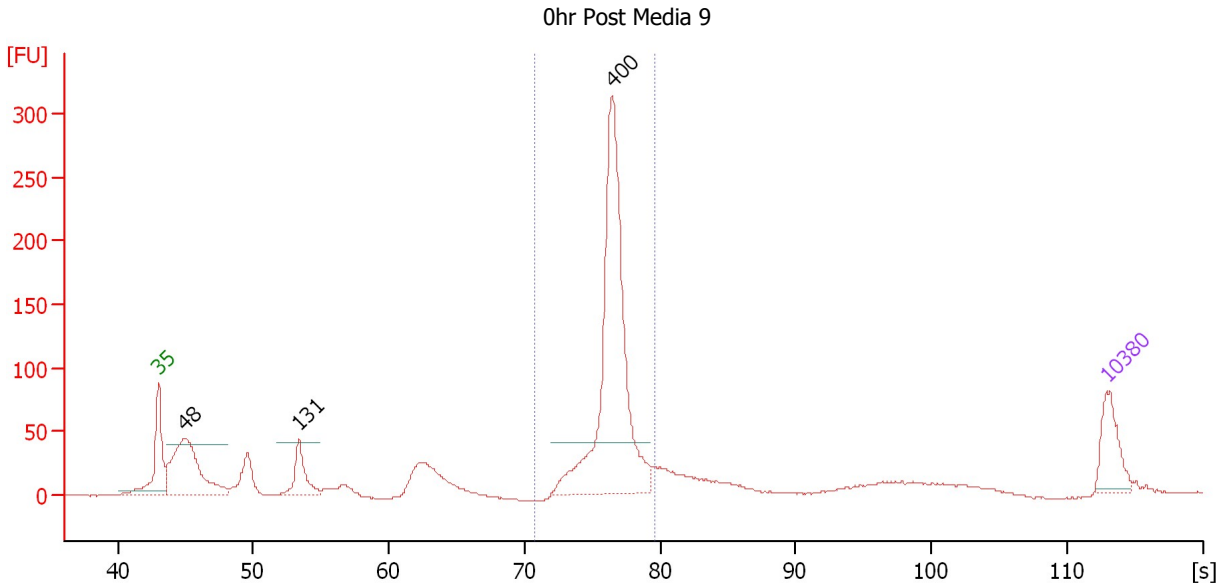
**Region table for sample 6 : 0hr Post Endo 2**

From [bp]	To [bp]	Average Size [bp]	Molarity [pmol/l]	Conc. [pg/μl]	Corr. Area	% of Total	Size distribution in CV [%]	Color
330	478	397	6,019.5	1,573.94	1,727.6	68	4.8	Blue

Assay Class: High Sensitivity DNA Assay  
 Data Path: C:\...ents and Settings\Bioanalyzer\2013-10-17\2013-10-17\_009.xad

Created: 10/17/2013 3:15:26 PM  
 Modified: 10/17/2013 4:43:19 PM

**Electropherogram Summary Continued ...**



**Setpoint Deviations for sample 7 : 0hr Post Media 9**

Height Threshold [FU] : 40

**Overall Results for sample 7 : 0hr Post Media 9**

Number of peaks found: 3                      Corr. Area 1: 756.0  
 Noise: 0.4

**Peak table for sample 7 : 0hr Post Media 9**

Peak	Size [bp]	Conc. [pg/µl]	Molarity [pmol/l]	Observations
1	35	125.00	5,411.3	Lower Marker
2	48	364.09	11,428.5	
3	131	101.85	1,175.4	
4	400	760.43	2,882.1	
5	10,380	75.00	10.9	Upper Marker

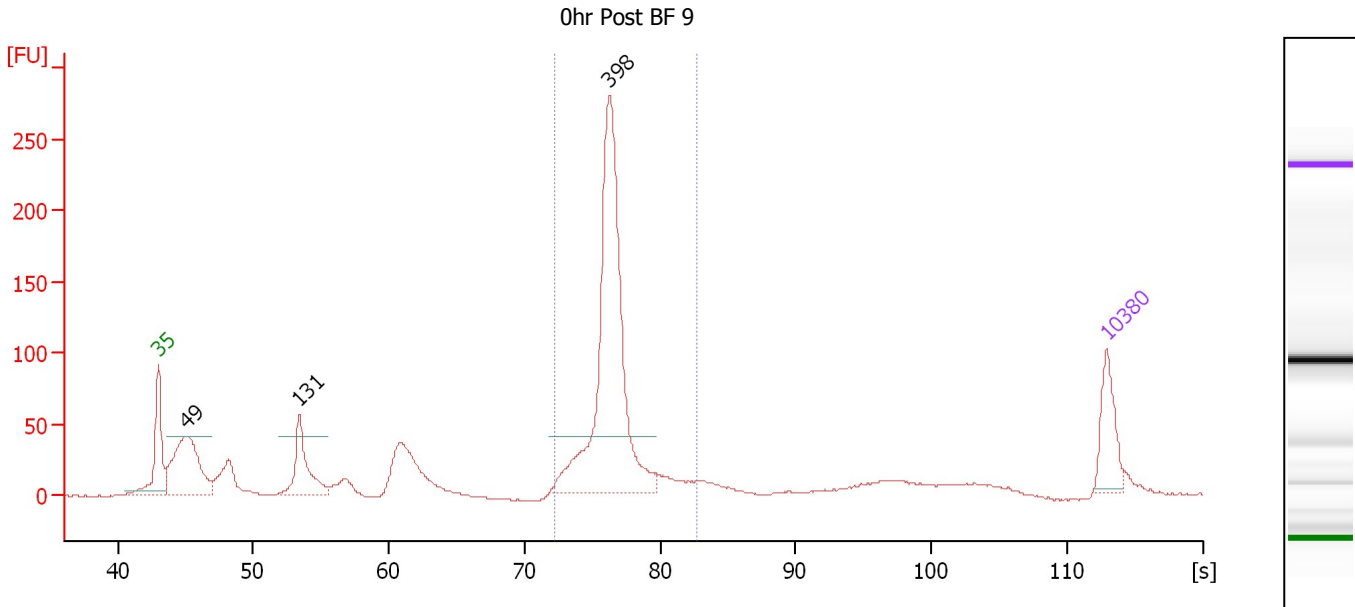
**Region table for sample 7 : 0hr Post Media 9**

From [bp]	To [bp]	Average Size [bp]	Molarity [pmol/l]	Conc. [pg/µl]	Corr. Area	% of Total	Size distribution in CV [%]	Color
328	455	402	2,909.1	770.70	756.0	52	4.4	Blue

Assay Class: High Sensitivity DNA Assay  
 Data Path: C:\...ents and Settings\Bioanalyzer\2013-10-17\2013-10-17\_009.xad

Created: 10/17/2013 3:15:26 PM  
 Modified: 10/17/2013 4:43:19 PM

**Electropherogram Summary Continued ...**



**Setpoint Deviations for sample 8 : 0hr Post BF 9**

Height Threshold [FU] : 40

**Overall Results for sample 8 : 0hr Post BF 9**

Number of peaks found: 3                      Corr. Area 1: 755.8  
 Noise: 0.3

**Peak table for sample 8 : 0hr Post BF 9**

Peak	Size [bp]	Conc. [pg/μl]	Molarity [pmol/l]	Observations
1	35	125.00	5,411.3	Lower Marker
2	49	307.17	9,485.7	
3	131	148.92	1,715.9	
4	398	720.73	2,746.9	
5	10,380	75.00	10.9	Upper Marker

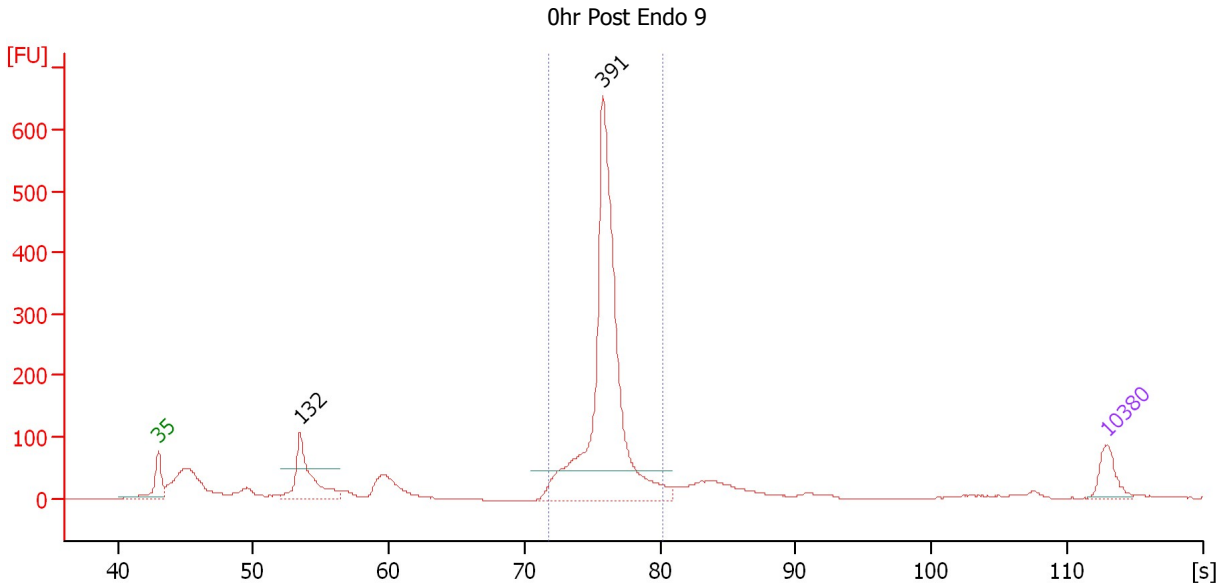
**Region table for sample 8 : 0hr Post BF 9**

From [bp]	To [bp]	Average Size [bp]	Molarity [pmol/l]	Conc. [pg/μl]	Corr. Area	% of Total	Size distribution in CV [%]	Color
346	509	403	2,897.9	768.06	755.8	53	6.2	Blue

Assay Class: High Sensitivity DNA Assay  
 Data Path: C:\...ents and Settings\Bioanalyzer\2013-10-17\2013-10-17\_009.xad

Created: 10/17/2013 3:15:26 PM  
 Modified: 10/17/2013 4:43:19 PM

**Electropherogram Summary Continued ...**



**Setpoint Deviations for sample 9 : 0hr Post Endo 9**

Height Threshold [FU] : 50

**Overall Results for sample 9 : 0hr Post Endo 9**

Number of peaks found: 2                      Corr. Area 1: 1,537.9  
 Noise: 0.4

**Peak table for sample 9 : 0hr Post Endo 9**

Peak	Size [bp]	Conc. [pg/μl]	Molarity [pmol/l]	Observations
1	35	125.00	5,411.3	Lower Marker
2	132	359.67	4,121.1	
3	391	1,615.78	6,257.3	
4	10,380	75.00	10.9	Upper Marker

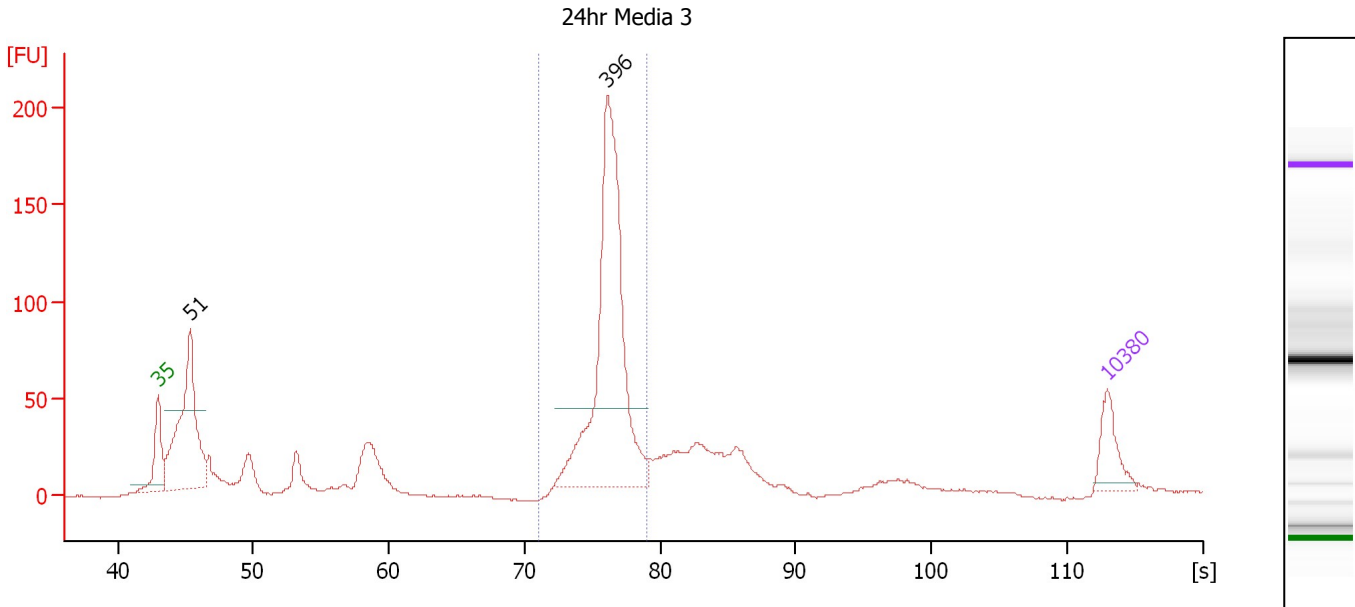
**Region table for sample 9 : 0hr Post Endo 9**

From [bp]	To [bp]	Average Size [bp]	Molarity [pmol/l]	Conc. [pg/μl]	Corr. Area	% of Total	Size distribution in CV [%]	Color
342	465	394	5,864.4	1,523.95	1,537.9	62	4.9	Blue

Assay Class: High Sensitivity DNA Assay  
 Data Path: C:\...ents and Settings\Bioanalyzer\2013-10-17\2013-10-17\_009.xad

Created: 10/17/2013 3:15:26 PM  
 Modified: 10/17/2013 4:43:19 PM

**Electropherogram Summary Continued ...**



**Setpoint Deviations for sample 10 : 24hr Media 3**

Height Threshold [FU] : 40

**Overall Results for sample 10 : 24hr Media 3**

Number of peaks found: 2                      Corr. Area 1: 577.1  
 Noise: 0.5

**Peak table for sample 10 : 24hr Media 3**

Peak	Size [bp]	Conc. [pg/µl]	Molarity [pmol/l]	Observations
1	35	125.00	5,411.3	Lower Marker
2	51	589.90	17,478.8	
3	396	916.13	3,509.5	
4	10,380	75.00	10.9	Upper Marker

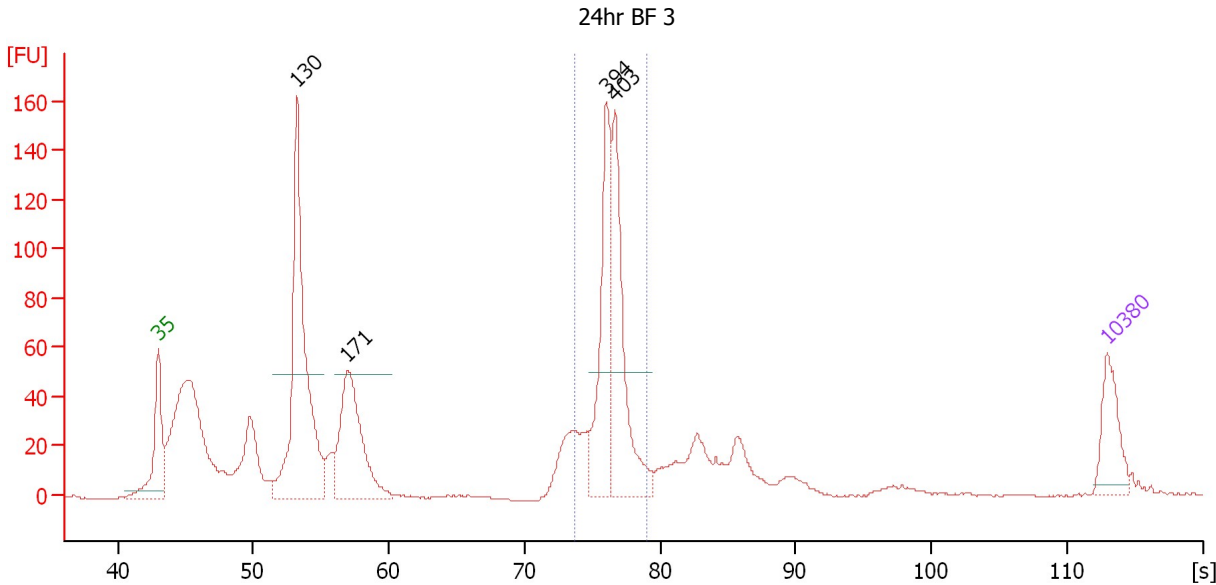
**Region table for sample 10 : 24hr Media 3**

From [bp]	To [bp]	Average Size [bp]	Molarity [pmol/l]	Conc. [pg/µl]	Corr. Area	% of Total	Size distribution in CV [%]	Color
332	444	398	3,693.6	967.60	577.1	44	4.2	Blue

Assay Class: High Sensitivity DNA Assay  
 Data Path: C:\...ents and Settings\Bioanalyzer\2013-10-17\2013-10-17\_009.xad

Created: 10/17/2013 3:15:26 PM  
 Modified: 10/17/2013 4:43:19 PM

**Electropherogram Summary Continued ...**



**Setpoint Deviations for sample 11 : 24hr BF 3**

Height Threshold [FU] : 50

**Overall Results for sample 11 : 24hr BF 3**

Number of peaks found: 4                      Corr. Area 1: 417.6  
 Noise: 0.3

**Peak table for sample 11 : 24hr BF 3**

Peak	Size [bp]	Conc. [pg/μl]	Molarity [pmol/l]	Observations
1	35	125.00	5,411.3	Lower Marker
2	130	671.76	7,846.2	
3	171	331.35	2,937.3	
4	394	274.78	1,055.4	
5	403	309.06	1,160.7	
6	10,380	75.00	10.9	Upper Marker

**Region table for sample 11 : 24hr BF 3**

From [bp]	To [bp]	Average Size [bp]	Molarity [pmol/l]	Conc. [pg/μl]	Corr. Area	% of Total	Size distribution in CV [%]	Color
365	445	399	2,370.8	623.89	417.6	28	3.6	Blue



Assay Class: High Sensitivity DNA Assay  
Data Path: C:\...ents and Settings\Bioanalyzer\2013-10-17\2013-10-17\_009.xad

Created: 10/17/2013 3:15:26 PM  
Modified: 10/17/2013 4:43:19 PM

**Gel Image**

