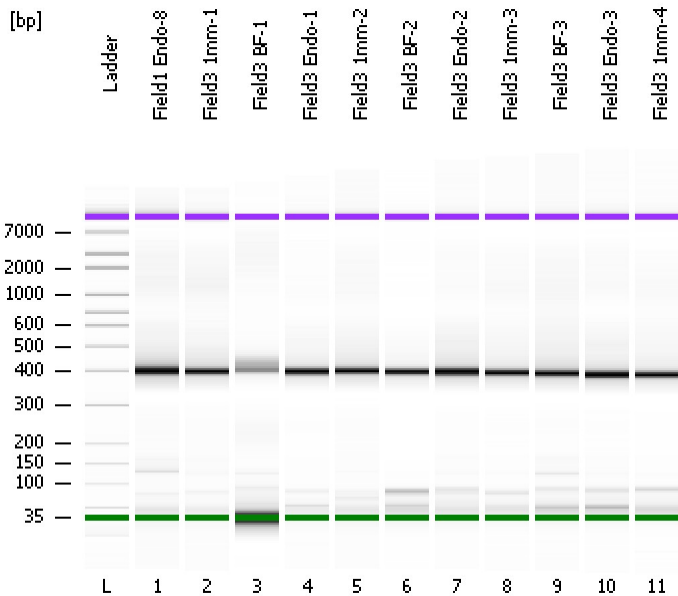


Assay Class: High Sensitivity DNA Assay  
Data Path: C:\...ents and Settings\Bioanalyzer\2013-10-18\2013-10-18\_001.xad

Created: 10/18/2013 10:19:35 AM  
Modified: 10/18/2013 11:03:12 AM

### Electrophoresis File Run Summary



#### Instrument Information:

Instrument Name: DE13701086      Firmware: C.01.069  
Serial#: DE13701086      Type: G2938B

#### Assay Information:

Assay Origin Path: C:\Program Files\Agilent\2100 bioanalyzer\2100 expert\assays\dsDNA\High Sensitivity DNA.xsy  
Assay Class: High Sensitivity DNA Assay  
Version: 1.03  
Assay Comments: Copyright © 2003-2010 Agilent Technologies

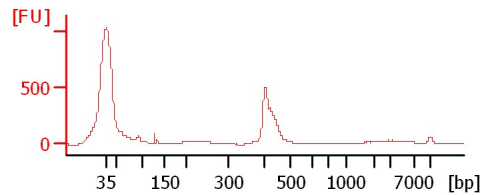
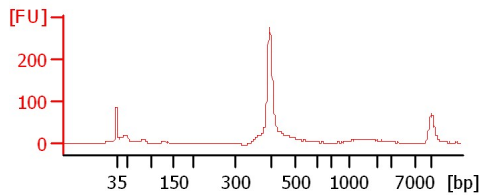
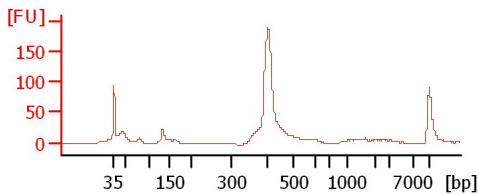
#### Chip Information:

Chip Lot #:   
Reagent Kit Lot #:   
Chip Comments:

Field1 Endo-8

Field3 1mm-1

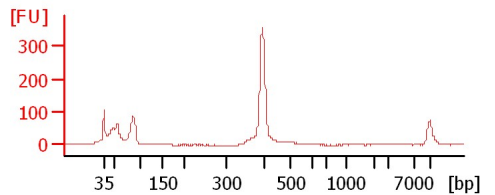
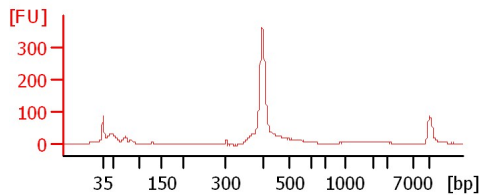
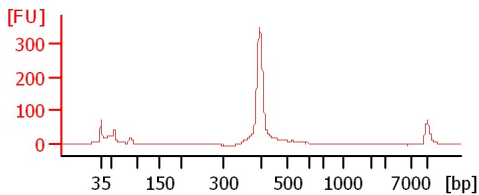
Field3 BF-1



Field3 Endo-1

Field3 1mm-2

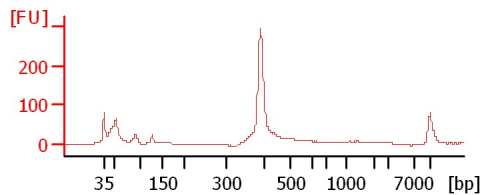
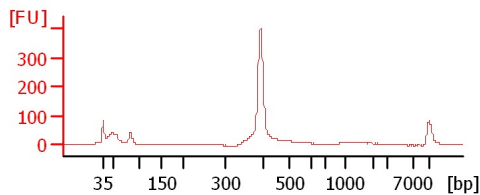
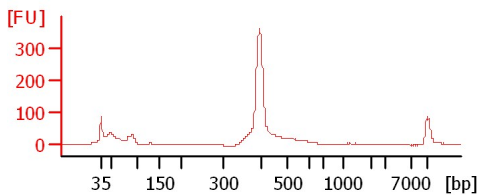
Field3 BF-2



Field3 Endo-2

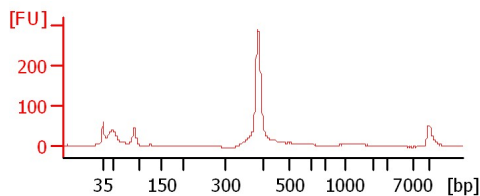
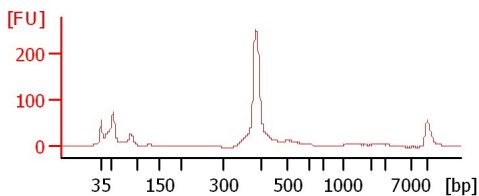
Field3 1mm-3

Field3 BF-3



Field3 Endo-3

Field3 1mm-4



Assay Class: High Sensitivity DNA Assay  
 Data Path: C:\...ents and Settings\Bioanalyzer\2013-10-18\2013-10-18\_001.xad

Created: 10/18/2013 10:19:35 AM  
 Modified: 10/18/2013 11:03:12 AM

**Electrophoresis File Run Summary (Chip Summary)**

Sample Name	Sample Comment	Rest. Digest	Status	Observation	Result Label	Result Color
Field1 Endo-8		<input type="checkbox"/>	✓			
Field3 1mm-1		<input type="checkbox"/>	✓			
Field3 BF-1		<input type="checkbox"/>	✓			
Field3 Endo-1		<input type="checkbox"/>	✓			
Field3 1mm-2		<input type="checkbox"/>	✓			
Field3 BF-2		<input type="checkbox"/>	✓			
Field3 Endo-2		<input type="checkbox"/>	✓			
Field3 1mm-3		<input type="checkbox"/>	✓			
Field3 BF-3		<input type="checkbox"/>	✓			
Field3 Endo-3		<input type="checkbox"/>	✓			
Field3 1mm-4		<input type="checkbox"/>	✓			
Ladder		<input type="checkbox"/>	✓			

**Chip Lot #**

**Reagent Kit Lot #**

**Chip Comments :**

Assay Class: High Sensitivity DNA Assay  
Data Path: C:\...ents and Settings\Bioanalyzer\2013-10-18\2013-10-18\_001.xad

Created: 10/18/2013 10:19:35 AM  
Modified: 10/18/2013 11:03:12 AM

**Electrophoresis Assay Details**

**General Analysis Settings**

Number of Available Sample and Ladder Wells (Max.) : 12  
Minimum Visible Range [s] : 32  
Maximum Visible Range [s] : 138  
Start Analysis Time Range [s] : 33  
End Analysis Time Range [s] : 137.5  
Ladder Concentration [pg/μl] : 1950  
Uses Standard Area for Ladder Fragments  
Lower Marker Concentration [pg/μl] : 125  
Upper Marker Concentration [pg/μl] : 75  
Used Upper Marker for Quantitation  
Standard Curve Fit is Point to Point  
Show Data Aligned to Lower and Upper Marker

**Integrator Settings**

Integration Start Time [s] : 33.05  
Integration End Time [s] : 137  
Slope Threshold : 0.8  
Height Threshold [FU] : 5  
Area Threshold : 0.1  
Width Threshold [s] : 0.6  
Baseline Plateau [s] : 0.5

**Filter Settings**

Filter Width [s] : 0.5  
Polynomial Order : 4

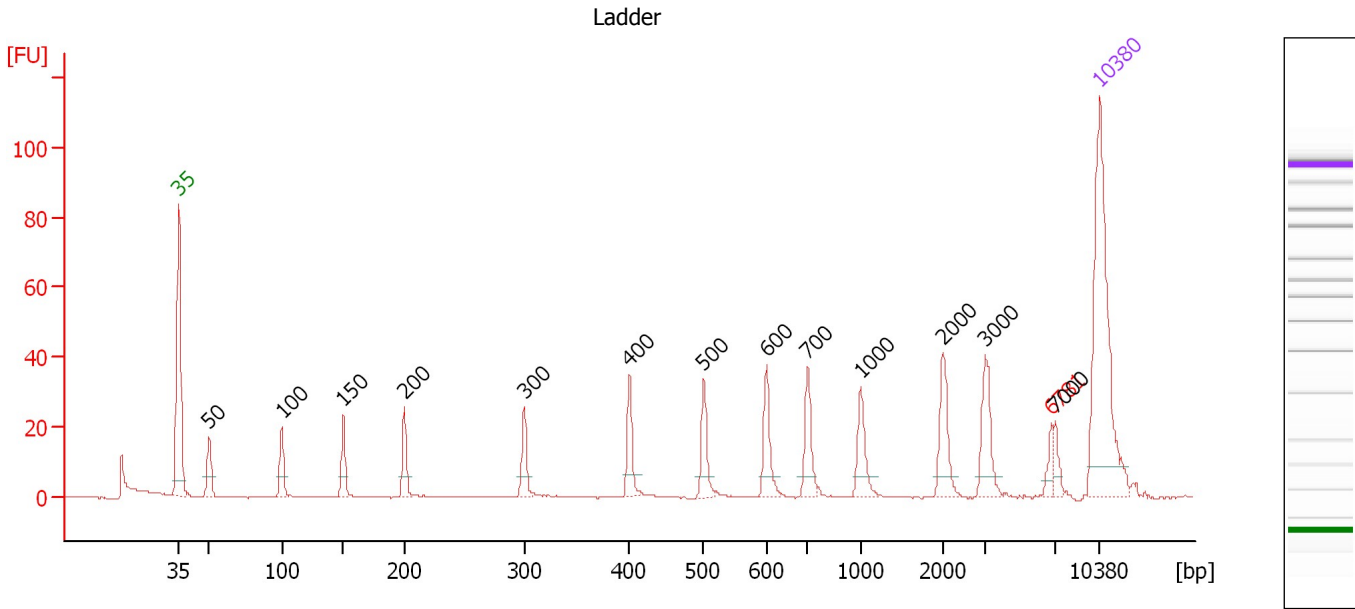
**Ladder**

Ladder Peak	Size	Area
1	35	160
2	50	210
3	100	208
4	150	221
5	200	242
6	300	270
7	400	305
8	500	306
9	600	336
10	700	321
11	1000	366
12	2000	413
13	3000	411
14	7000	400
15	10380	214

Assay Class: High Sensitivity DNA Assay  
 Data Path: C:\...ents and Settings\Bioanalyzer\2013-10-18\2013-10-18\_001.xad

Created: 10/18/2013 10:19:35 AM  
 Modified: 10/18/2013 11:03:12 AM

**Electropherogram Summary**



**Overall Results for Ladder**

Noise: 0.2

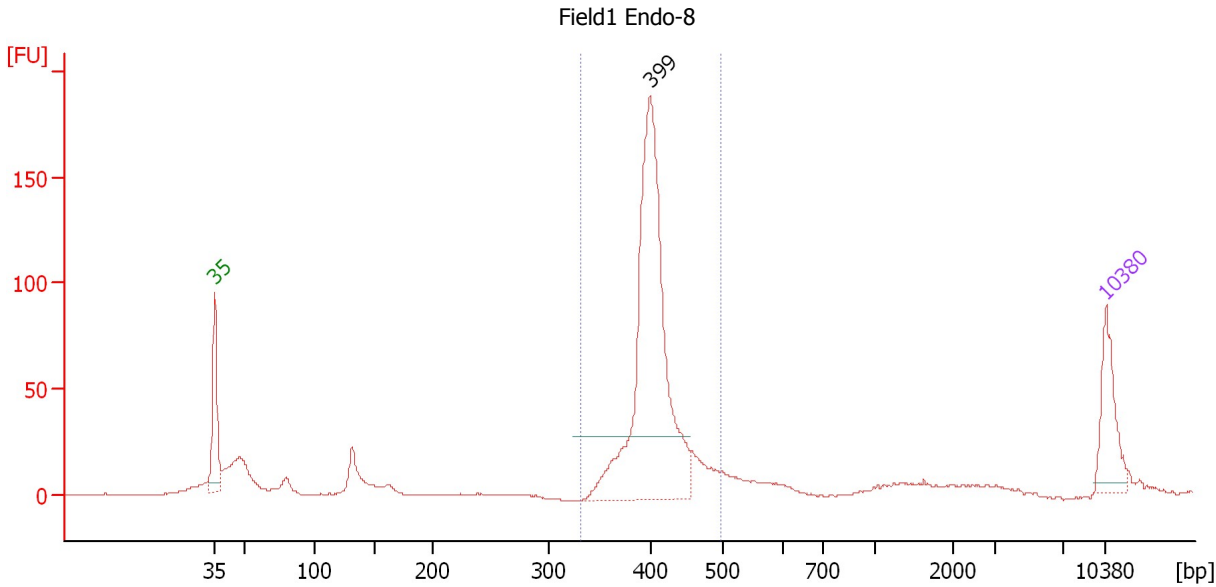
**Peak table for Ladder**

Peak	Size [bp]	Conc. [pg/μl]	Molarity [pmol/l]	Observations
1	35	125.00	5,411.3	Lower Marker
2	50	150.00	4,545.5	Ladder Peak
3	100	150.00	2,272.7	Ladder Peak
4	150	150.00	1,515.2	Ladder Peak
5	200	150.00	1,136.4	Ladder Peak
6	300	150.00	757.6	Ladder Peak
7	400	150.00	568.2	Ladder Peak
8	500	150.00	454.5	Ladder Peak
9	600	150.00	378.8	Ladder Peak
10	700	150.00	324.7	Ladder Peak
11	1,000	150.00	227.3	Ladder Peak
12	2,000	150.00	113.6	Ladder Peak
13	3,000	150.00	75.8	Ladder Peak
14	6,781	0.00	0.0	excluded peak
15	7,000	150.00	32.5	Ladder Peak
16	10,380	75.00	10.9	Upper Marker

Assay Class: High Sensitivity DNA Assay  
 Data Path: C:\...ents and Settings\Bioanalyzer\2013-10-18\2013-10-18\_001.xad

Created: 10/18/2013 10:19:35 AM  
 Modified: 10/18/2013 11:03:12 AM

**Electropherogram Summary Continued ...**



**Setpoint Deviations for sample 1 : Field1 Endo-8**

Height Threshold [FU] : 30

**Overall Results for sample 1 : Field1 Endo-8**

Number of peaks found: 1                      Corr. Area 1: 648.9  
 Noise: 0.2

**Peak table for sample 1 : Field1 Endo-8**

Peak	Size [bp]	Conc. [pg/μl]	Molarity [pmol/l]	Observations
1	35	125.00	5,411.3	Lower Marker
2	399	694.77	2,636.9	
3	10,380	75.00	10.9	Upper Marker

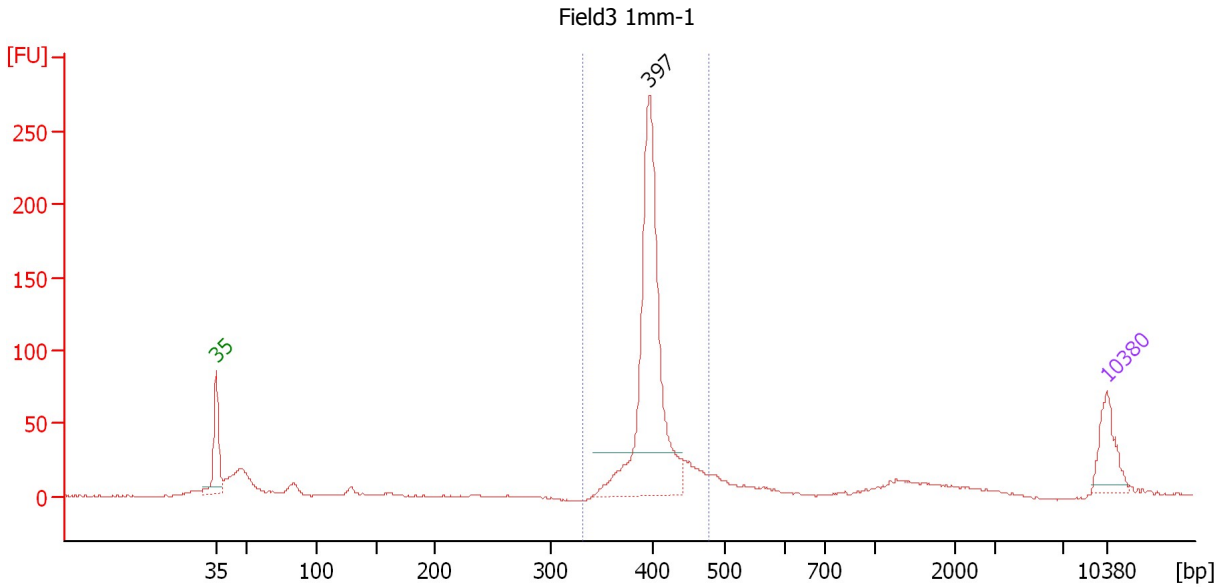
**Region table for sample 1 : Field1 Endo-8**

From [bp]	To [bp]	Average Size [bp]	Molarity [pmol/l]	Conc. [pg/μl]	Corr. Area	% of Total	Size distribution in CV [%]	Color
331	499	407	2,628.0	704.28	648.9	70	6.5	Blue

Assay Class: High Sensitivity DNA Assay  
 Data Path: C:\...ents and Settings\Bioanalyzer\2013-10-18\2013-10-18\_001.xad

Created: 10/18/2013 10:19:35 AM  
 Modified: 10/18/2013 11:03:12 AM

**Electropherogram Summary Continued ...**



**Setpoint Deviations for sample 2 : Field3 1mm-1**

Height Threshold [FU] : 30

**Overall Results for sample 2 : Field3 1mm-1**

Number of peaks found: 1                      Corr. Area 1: 682.4  
 Noise: 0.5

**Peak table for sample 2 : Field3 1mm-1**

Peak	Size [bp]	Conc. [pg/μl]	Molarity [pmol/l]	Observations
1	35	125.00	5,411.3	Lower Marker
2	397	735.84	2,805.7	
3	10,380	75.00	10.9	Upper Marker

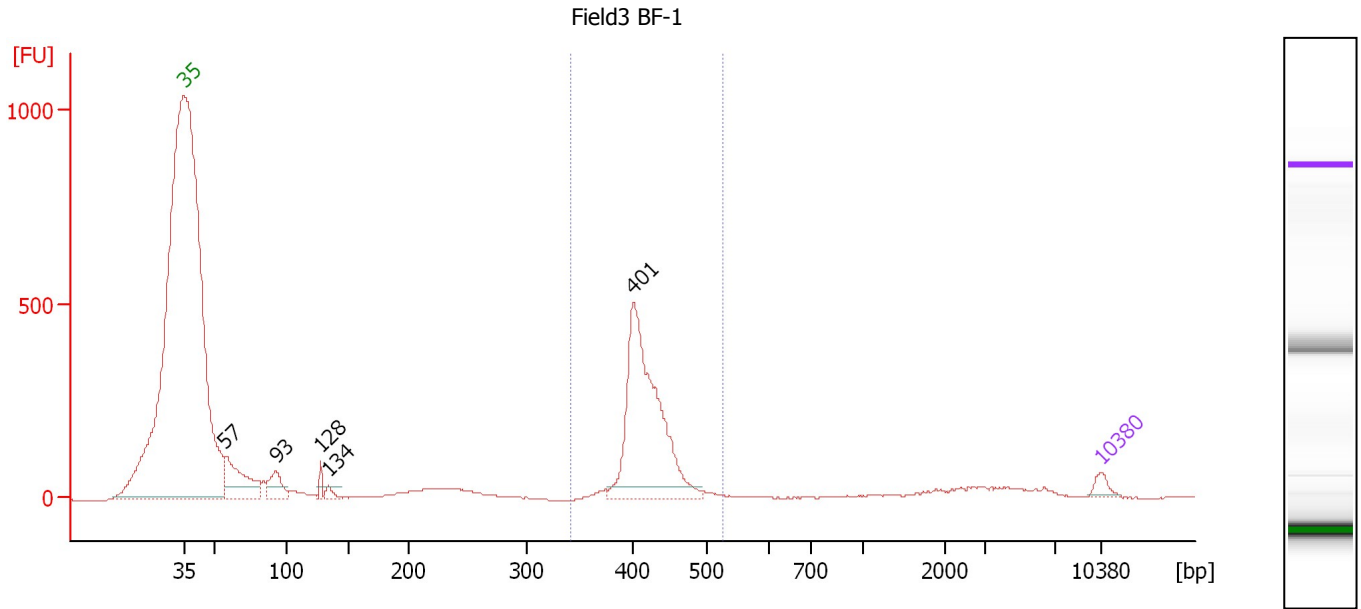
**Region table for sample 2 : Field3 1mm-1**

From [bp]	To [bp]	Average Size [bp]	Molarity [pmol/l]	Conc. [pg/μl]	Corr. Area	% of Total	Size distribution in CV [%]	Color
332	479	404	2,985.8	793.53	682.4	70	5.5	Blue

Assay Class: High Sensitivity DNA Assay  
 Data Path: C:\...ents and Settings\Bioanalyzer\2013-10-18\2013-10-18\_001.xad

Created: 10/18/2013 10:19:35 AM  
 Modified: 10/18/2013 11:03:12 AM

**Electropherogram Summary Continued ...**



**Setpoint Deviations for sample 3 : Field3 BF-1**

Height Threshold [FU] : 30

**Overall Results for sample 3 : Field3 BF-1**

Number of peaks found: 5                      Corr. Area 1: 1,846.9  
 Noise: 0.7

**Peak table for sample 3 : Field3 BF-1**

Peak	Size [bp]	Conc. [pg/μl]	Molarity [pmol/l]	Observations
1	35	125.00	5,411.3	Lower Marker
2	57	985.88	25,981.2	
3	93	357.25	5,850.5	
4	128	80.22	951.7	
5	134	85.23	960.3	
6	401	2,684.56	10,133.8	
7	10,380	75.00	10.9	Upper Marker

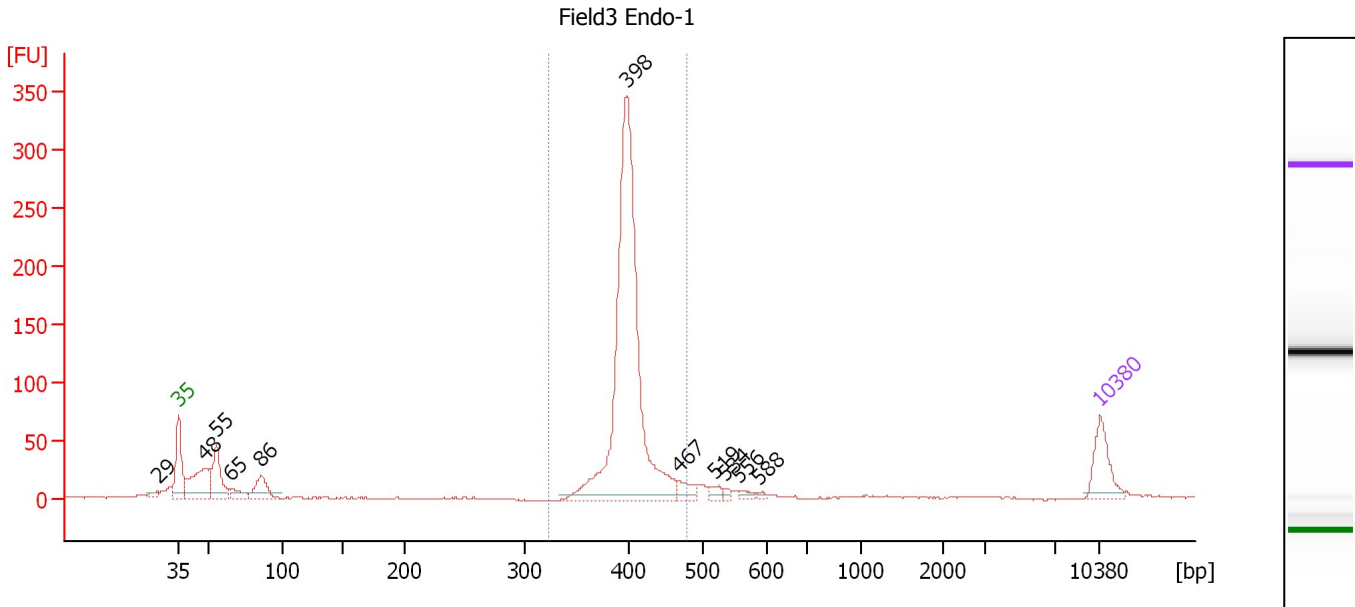
**Region table for sample 3 : Field3 BF-1**

From [bp]	To [bp]	Average Size [bp]	Molarity [pmol/l]	Conc. [pg/μl]	Corr. Area	% of Total	Size distribution in CV [%]	Color
342	525	420	9,847.0	2,724.55	1,846.9	58	6.0	Blue

Assay Class: High Sensitivity DNA Assay  
 Data Path: C:\...ents and Settings\Bioanalyzer\2013-10-18\2013-10-18\_001.xad

Created: 10/18/2013 10:19:35 AM  
 Modified: 10/18/2013 11:03:12 AM

**Electropherogram Summary Continued ...**



**Overall Results for sample 4 : Field3 Endo-1**

Number of peaks found: 11                      Corr. Area 1: 849.1  
 Noise: 0.4

**Peak table for sample 4 : Field3 Endo-1**

Peak	Size [bp]	Conc. [pg/μl]	Molarity [pmol/l]	Observations
1	29	0.00	0.0	
2	35	125.00	5,411.3	Lower Marker
3	48	182.59	5,770.1	
4	55	147.40	4,066.2	
5	65	34.61	805.3	
6	86	82.26	1,457.1	
7	398	1,119.19	4,265.2	
8	467	33.80	109.6	
9	519	19.11	55.8	
10	534	7.91	22.5	
11	556	13.37	36.4	
12	588	6.79	17.5	
13	10,380	75.00	10.9	Upper Marker

**Region table for sample 4 : Field3 Endo-1**

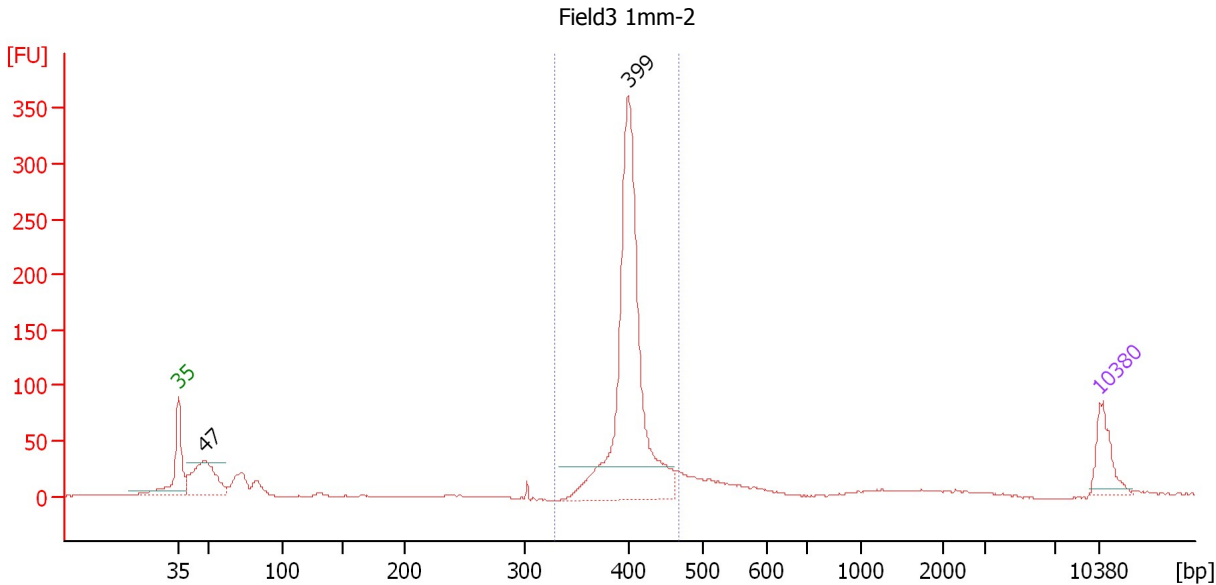
From [bp]	To [bp]	Average Size [bp]	Molarity [pmol/l]	Conc. [pg/μl]	Corr. Area	% of Total	Size distribution in CV [%]	Color
323	478	401	4,146.8	1,096.77	849.1	73	4.7	Blue



Assay Class: High Sensitivity DNA Assay  
 Data Path: C:\...ents and Settings\Bioanalyzer\2013-10-18\2013-10-18\_001.xad

Created: 10/18/2013 10:19:35 AM  
 Modified: 10/18/2013 11:03:12 AM

**Electropherogram Summary Continued ...**



**Setpoint Deviations for sample 5 : Field3 1mm-2**

Height Threshold [FU] : 30

**Overall Results for sample 5 : Field3 1mm-2**

Number of peaks found: 2                      Corr. Area 1: 854.4  
 Noise: 0.4

**Peak table for sample 5 : Field3 1mm-2**

Peak	Size [bp]	Conc. [pg/μl]	Molarity [pmol/l]	Observations
1	35	125.00	5,411.3	Lower Marker
2	47	254.40	8,148.9	
3	399	956.37	3,631.3	
4	10,380	75.00	10.9	Upper Marker

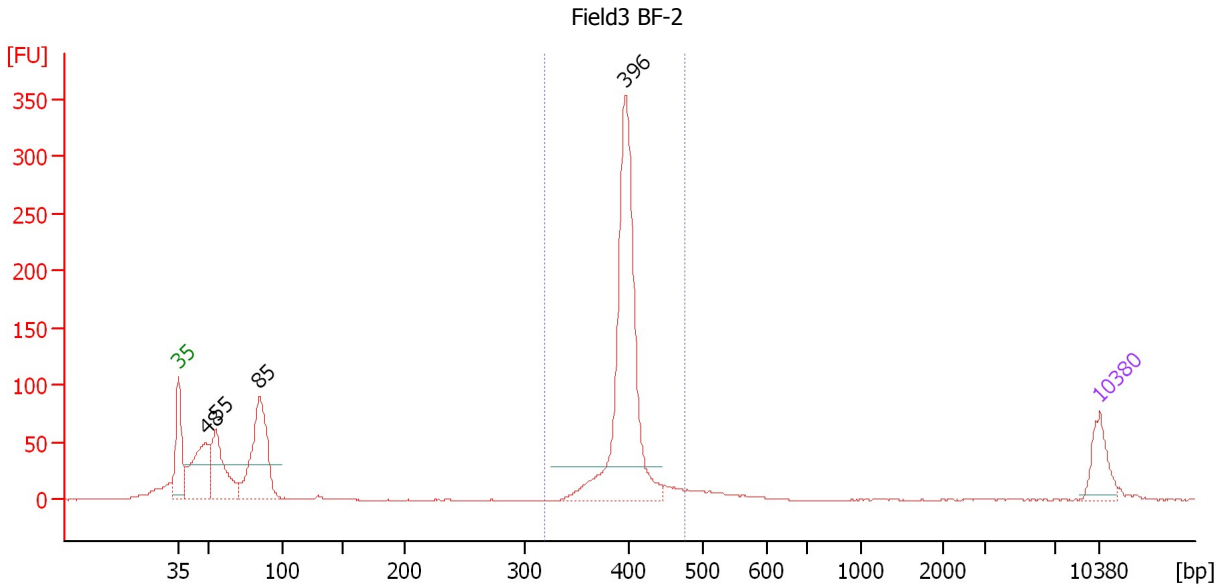
**Region table for sample 5 : Field3 1mm-2**

From [bp]	To [bp]	Average Size [bp]	Molarity [pmol/l]	Conc. [pg/μl]	Corr. Area	% of Total	Size distribution in CV [%]	Color
330	465	403	3,459.2	917.97	854.4	67	4.6	Blue

Assay Class: High Sensitivity DNA Assay  
 Data Path: C:\...ents and Settings\Bioanalyzer\2013-10-18\2013-10-18\_001.xad

Created: 10/18/2013 10:19:35 AM  
 Modified: 10/18/2013 11:03:12 AM

**Electropherogram Summary Continued ...**



**Setpoint Deviations for sample 6 : Field3 BF-2**

Height Threshold [FU] : 30

**Overall Results for sample 6 : Field3 BF-2**

Number of peaks found: 4                      Corr. Area 1: 765.7  
 Noise: 0.2

**Peak table for sample 6 : Field3 BF-2**

Peak	Size [bp]	Conc. [pg/μl]	Molarity [pmol/l]	Observations
1	35	125.00	5,411.3	Lower Marker
2	48	298.26	9,374.8	
3	55	278.38	7,718.2	
4	85	439.38	7,862.1	
5	396	862.06	3,296.3	
6	10,380	75.00	10.9	Upper Marker

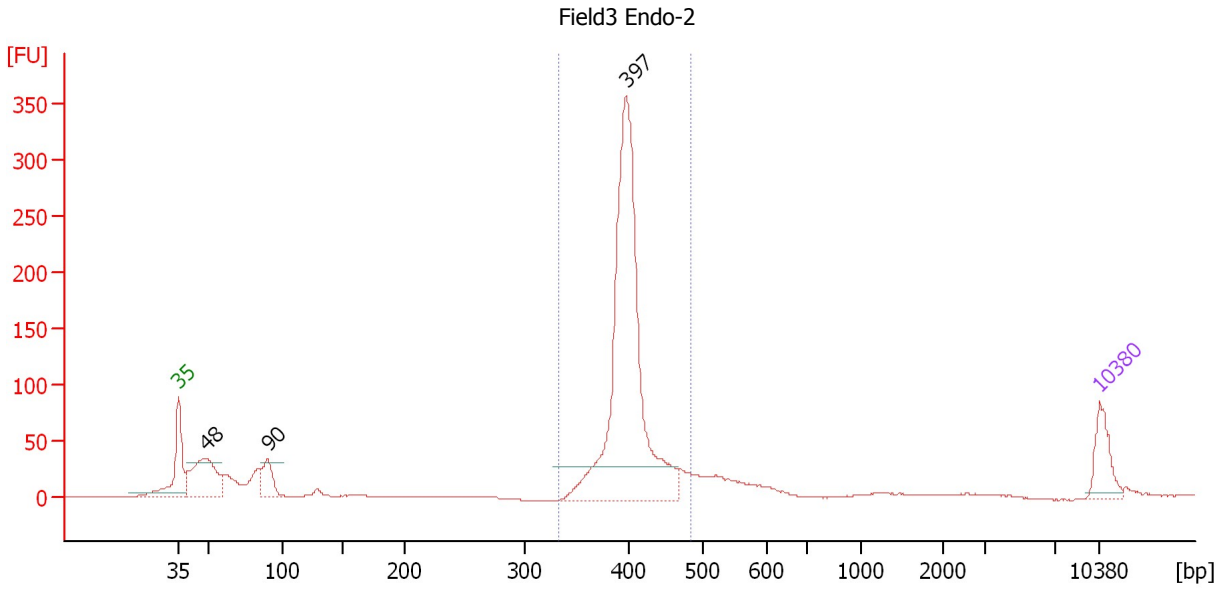
**Region table for sample 6 : Field3 BF-2**

From [bp]	To [bp]	Average Size [bp]	Molarity [pmol/l]	Conc. [pg/μl]	Corr. Area	% of Total	Size distribution in CV [%]	Color
320	473	398	3,334.8	875.39	765.7	50	4.3	Blue

Assay Class: High Sensitivity DNA Assay  
 Data Path: C:\...ents and Settings\Bioanalyzer\2013-10-18\2013-10-18\_001.xad

Created: 10/18/2013 10:19:35 AM  
 Modified: 10/18/2013 11:03:12 AM

**Electropherogram Summary Continued ...**



**Setpoint Deviations for sample 7 : Field3 Endo-2**

Height Threshold [FU] : 30

**Overall Results for sample 7 : Field3 Endo-2**

Number of peaks found: 3                      Corr. Area 1: 1,037.1  
 Noise: 0.2

**Peak table for sample 7 : Field3 Endo-2**

Peak	Size [bp]	Conc. [pg/μl]	Molarity [pmol/l]	Observations
1	35	125.00	5,411.3	Lower Marker
2	48	286.07	8,993.1	
3	90	101.72	1,705.6	
4	397	1,173.99	4,476.4	
5	10,380	75.00	10.9	Upper Marker

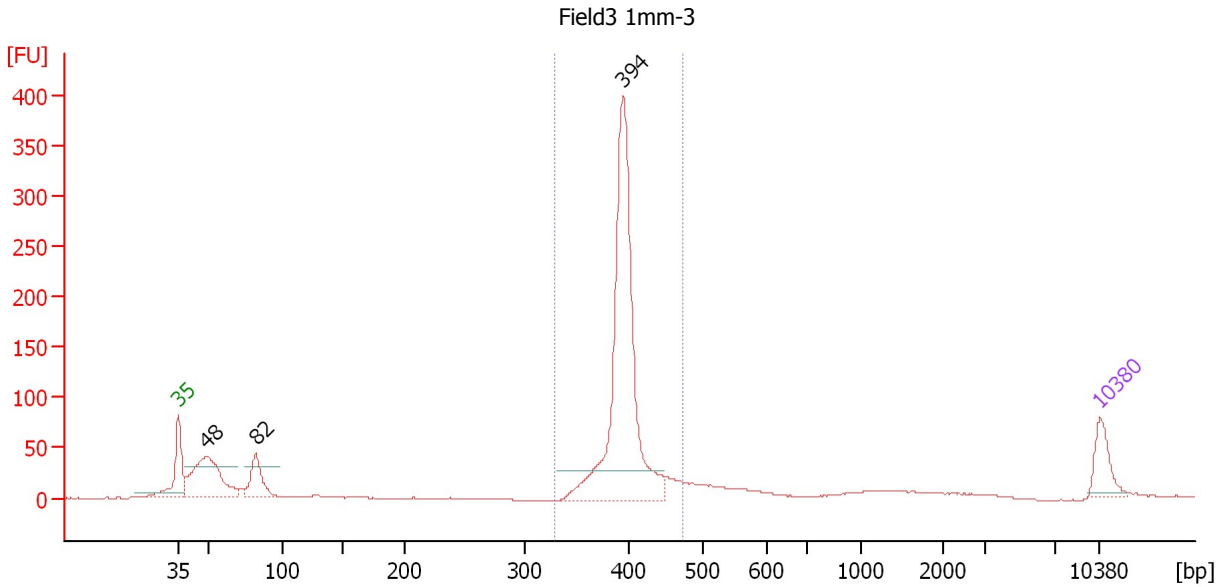
**Region table for sample 7 : Field3 Endo-2**

From [bp]	To [bp]	Average Size [bp]	Molarity [pmol/l]	Conc. [pg/μl]	Corr. Area	% of Total	Size distribution in CV [%]	Color
332	482	402	4,333.6	1,146.86	1,037.1	68	5.6	Blue

Assay Class: High Sensitivity DNA Assay  
 Data Path: C:\...ents and Settings\Bioanalyzer\2013-10-18\2013-10-18\_001.xad

Created: 10/18/2013 10:19:35 AM  
 Modified: 10/18/2013 11:03:12 AM

**Electropherogram Summary Continued ...**



**Setpoint Deviations for sample 8 : Field3 1mm-3**

Height Threshold [FU] : 30

**Overall Results for sample 8 : Field3 1mm-3**

Number of peaks found: 3                      Corr. Area 1: 902.6  
 Noise: 0.3

**Peak table for sample 8 : Field3 1mm-3**

Peak	Size [bp]	Conc. [pg/µl]	Molarity [pmol/l]	Observations
1	35	125.00	5,411.3	Lower Marker
2	48	406.59	12,743.3	
3	82	154.59	2,858.3	
4	394	1,056.63	4,062.1	
5	10,380	75.00	10.9	Upper Marker

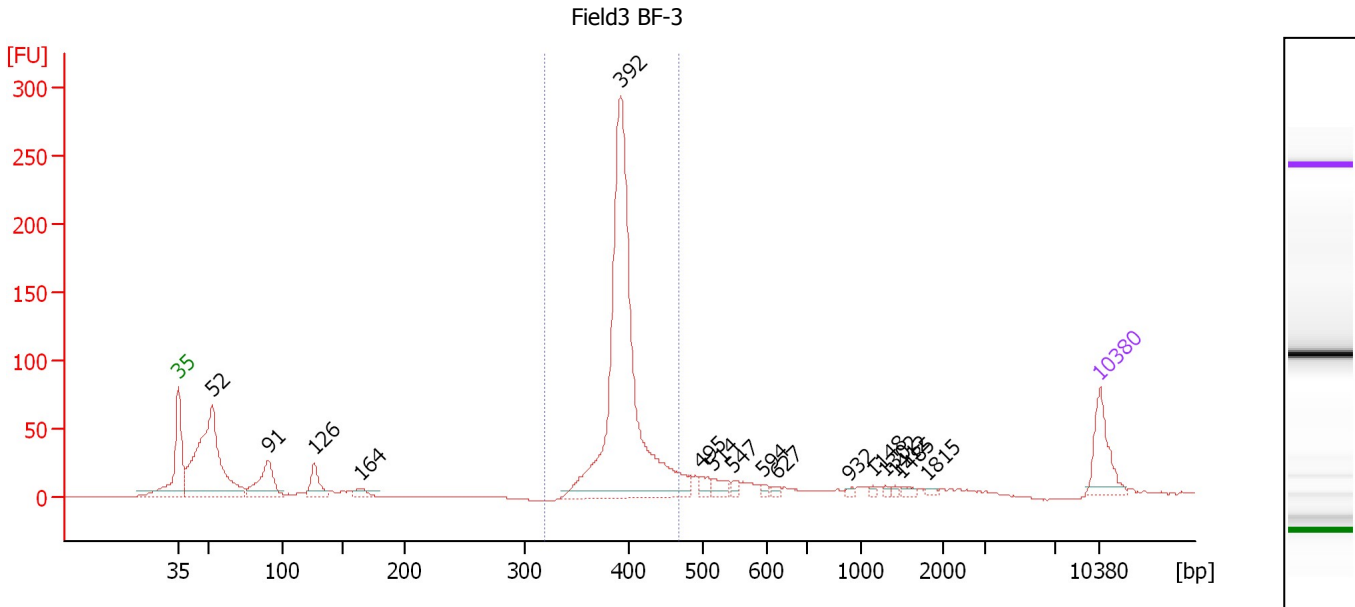
**Region table for sample 8 : Field3 1mm-3**

From [bp]	To [bp]	Average Size [bp]	Molarity [pmol/l]	Conc. [pg/µl]	Corr. Area	% of Total	Size distribution in CV [%]	Color
329	471	397	4,024.4	1,052.51	902.6	64	4.8	Blue

Assay Class: High Sensitivity DNA Assay  
 Data Path: C:\...ents and Settings\Bioanalyzer\2013-10-18\2013-10-18\_001.xad

Created: 10/18/2013 10:19:35 AM  
 Modified: 10/18/2013 11:03:12 AM

**Electropherogram Summary Continued ...**



**Overall Results for sample 9 : Field3 BF-3**

Number of peaks found: 16                      Corr. Area 1: 721.4  
 Noise: 0.2

**Peak table for sample 9 : Field3 BF-3**

Peak	Size [bp]	Conc. [pg/μl]	Molarity [pmol/l]	Observations
1	35	125.00	5,411.3	Lower Marker
2	52	527.09	15,362.8	
3	91	130.43	2,177.1	
4	126	64.59	775.0	
5	164	22.07	203.9	
6	392	961.74	3,720.3	
7	495	18.19	55.7	
8	514	26.50	78.1	
9	547	10.95	30.3	
10	594	6.57	16.8	
11	627	8.03	19.4	
12	932	5.33	8.7	
13	1,148	4.46	5.9	
14	1,302	4.62	5.4	
15	1,412	4.40	4.7	
16	1,485	7.55	7.7	
17	1,815	5.19	4.3	
18	10,380	75.00	10.9	Upper Marker

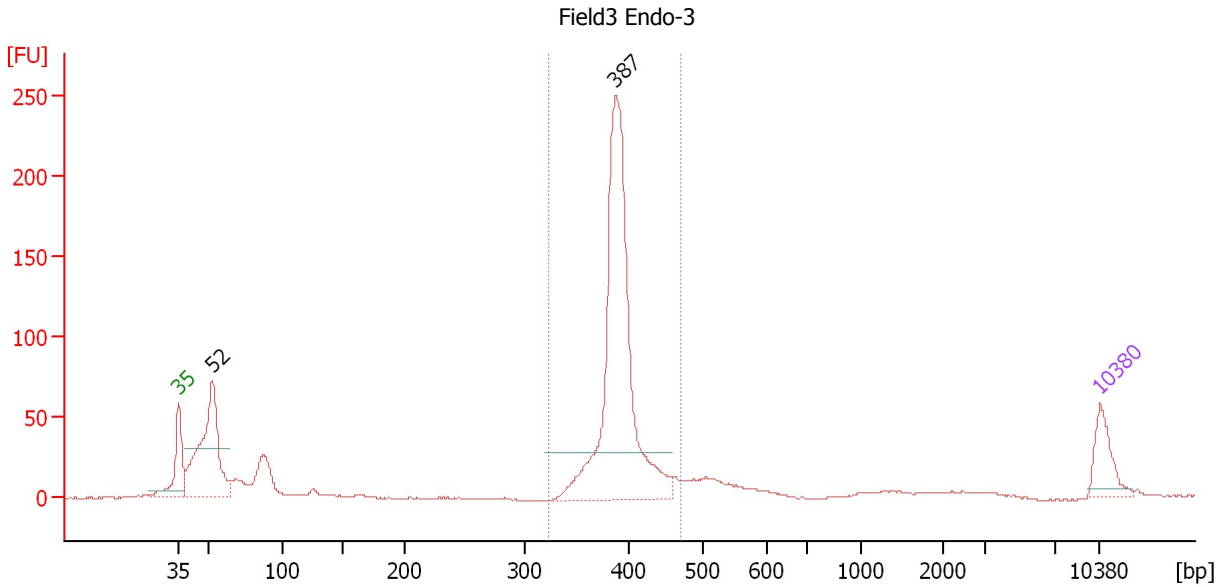
**Region table for sample 9 : Field3 BF-3**

From [bp]	To [bp]	Average Size [bp]	Molarity [pmol/l]	Conc. [pg/μl]	Corr. Area	% of Total	Size distribution in CV [%]	Color
320	467	397	3,449.6	900.76	721.4	56	5.1	Blue

Assay Class: High Sensitivity DNA Assay  
 Data Path: C:\...ents and Settings\Bioanalyzer\2013-10-18\2013-10-18\_001.xad

Created: 10/18/2013 10:19:35 AM  
 Modified: 10/18/2013 11:03:12 AM

**Electropherogram Summary Continued ...**



**Setpoint Deviations for sample 10 : Field3 Endo-3**

Height Threshold [FU] : 30

**Overall Results for sample 10 : Field3 Endo-3**

Number of peaks found: 2                      Corr. Area 1: 679.2  
 Noise: 0.3

**Peak table for sample 10 : Field3 Endo-3**

Peak	Size [bp]	Conc. [pg/μl]	Molarity [pmol/l]	Observations
1	35	125.00	5,411.3	Lower Marker
2	52	516.66	15,105.2	
3	387	1,027.23	4,026.2	
4	10,380	75.00	10.9	Upper Marker

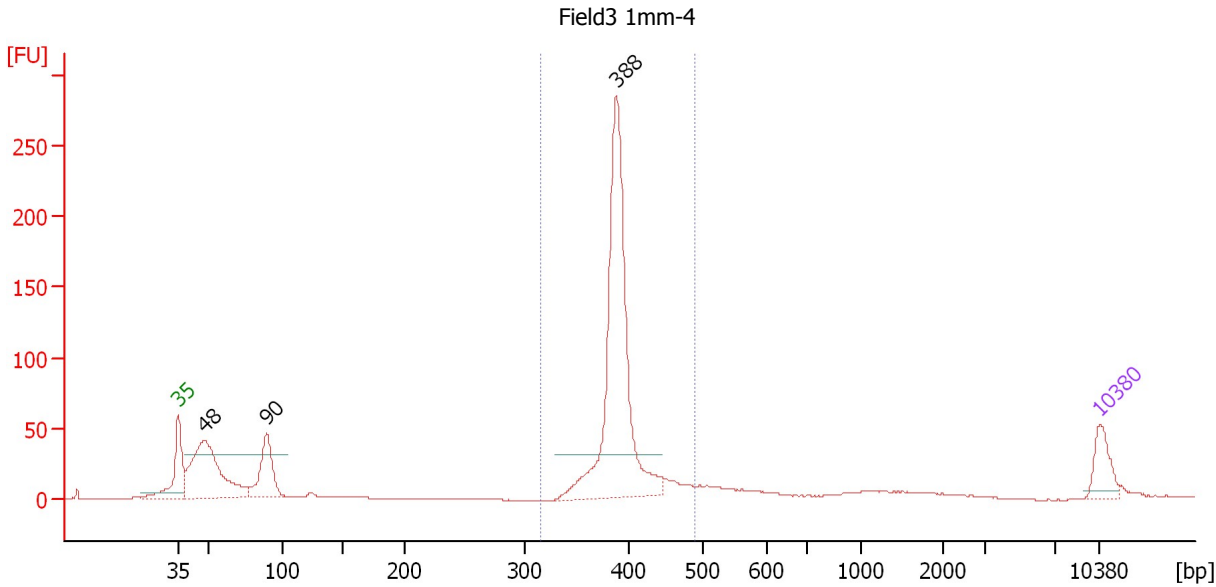
**Region table for sample 10 : Field3 Endo-3**

From [bp]	To [bp]	Average Size [bp]	Molarity [pmol/l]	Conc. [pg/μl]	Corr. Area	% of Total	Size distribution in CV [%]	Color
324	468	392	3,871.0	998.32	679.2	58	5.0	Blue

Assay Class: High Sensitivity DNA Assay  
 Data Path: C:\...ents and Settings\Bioanalyzer\2013-10-18\2013-10-18\_001.xad

Created: 10/18/2013 10:19:35 AM  
 Modified: 10/18/2013 11:03:12 AM

**Electropherogram Summary Continued ...**



**Setpoint Deviations for sample 11 : Field3 1mm-4**

Height Threshold [FU] : 30

**Overall Results for sample 11 : Field3 1mm-4**

Number of peaks found: 3                      Corr. Area 1: 647.1  
 Noise: 0.2

**Peak table for sample 11 : Field3 1mm-4**

Peak	Size [bp]	Conc. [pg/μl]	Molarity [pmol/l]	Observations
1	35	125.00	5,411.3	Lower Marker
2	48	567.63	18,100.5	
3	90	235.39	3,973.1	
4	388	1,036.07	4,050.2	
5	10,380	75.00	10.9	Upper Marker

**Region table for sample 11 : Field3 1mm-4**

From [bp]	To [bp]	Average Size [bp]	Molarity [pmol/l]	Conc. [pg/μl]	Corr. Area	% of Total	Size distribution in CV [%]	Color
316	488	393	4,227.5	1,093.28	647.1	60	5.7	Blue

Assay Class: High Sensitivity DNA Assay  
Data Path: C:\...ents and Settings\Bioanalyzer\2013-10-18\2013-10-18\_001.xad

Created: 10/18/2013 10:19:35 AM  
Modified: 10/18/2013 11:03:12 AM

**Gel Image**

