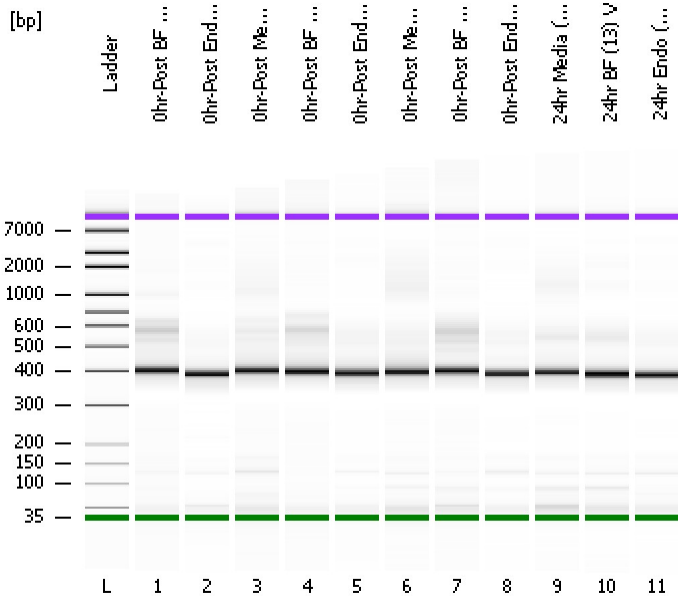


Assay Class: High Sensitivity DNA Assay
Data Path: C:\...ents and Settings\Bioanalyzer\2013-10-18\2013-10-18_005.xad

Created: 10/18/2013 2:24:55 PM
Modified: 10/18/2013 3:12:52 PM

Electrophoresis File Run Summary



Instrument Information:

Instrument Name: DE13701086 Firmware: C.01.069
Serial#: DE13701086 Type: G2938B

Assay Information:

Assay Origin Path: C:\Program Files\Agilent\2100 bioanalyzer\2100 expert\assays\dsDNA\High Sensitivity DNA.xsy
Assay Class: High Sensitivity DNA Assay
Version: 1.03
Assay Comments: Copyright © 2003-2010 Agilent Technologies

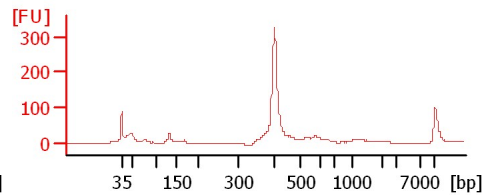
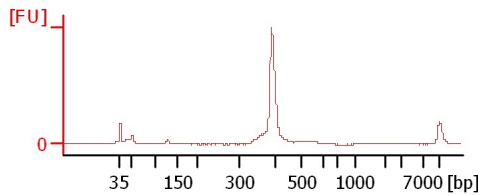
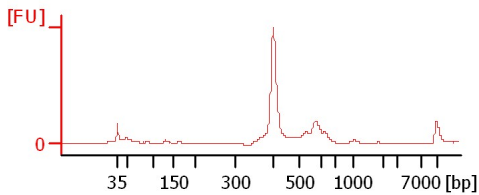
Chip Information:

Chip Lot #:
Reagent Kit Lot #:
Chip Comments:

0hr-Post BF (18) V

0hr-Post Endo (18) V

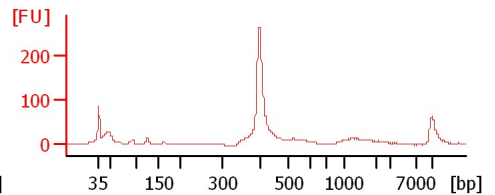
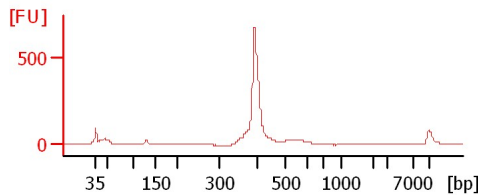
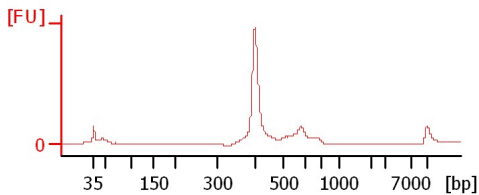
0hr-Post Media (19) V



0hr-Post BF (19) V

0hr-Post Endo (19) V

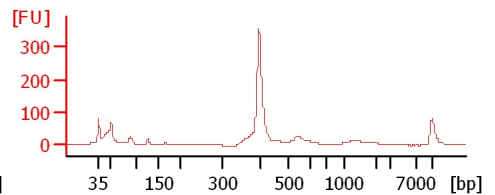
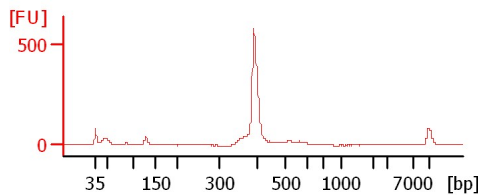
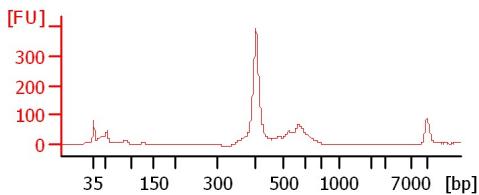
0hr-Post Media (20) V



0hr-Post BF (20) V

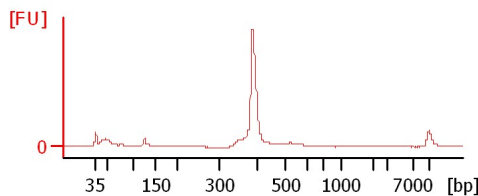
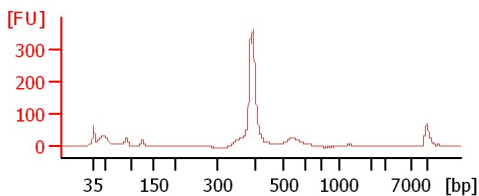
0hr-Post Endo (20) V

24hr Media (13) V



24hr BF (13) V

24hr Endo (13) V



Assay Class: High Sensitivity DNA Assay
Data Path: C:\...ents and Settings\Bioanalyzer\2013-10-18\2013-10-18_005.xad

Created: 10/18/2013 2:24:55 PM
Modified: 10/18/2013 3:12:52 PM

Electrophoresis File Run Summary (Chip Summary)

Sample Name	Sample Comment	Rest. Digest	Status	Observation	Result Label	Result Color
0hr-Post BF (18) V		<input type="checkbox"/>	✓			
0hr-Post Endo (18) V		<input type="checkbox"/>	✓			
0hr-Post Media (19) V		<input type="checkbox"/>	✓			
0hr-Post BF (19) V		<input type="checkbox"/>	✓			
0hr-Post Endo (19) V		<input type="checkbox"/>	✓			
0hr-Post Media (20) V		<input type="checkbox"/>	✓			
0hr-Post BF (20) V		<input type="checkbox"/>	✓			
0hr-Post Endo (20) V		<input type="checkbox"/>	✓			
24hr Media (13) V		<input type="checkbox"/>	✓			
24hr BF (13) V		<input type="checkbox"/>	✓			
24hr Endo (13) V		<input type="checkbox"/>	✓			
Ladder		<input type="checkbox"/>	✓			

Chip Lot #

Reagent Kit Lot #

Chip Comments :

Assay Class: High Sensitivity DNA Assay
Data Path: C:\...ents and Settings\Bioanalyzer\2013-10-18\2013-10-18_005.xad

Created: 10/18/2013 2:24:55 PM
Modified: 10/18/2013 3:12:52 PM

Electrophoresis Assay Details

General Analysis Settings

Number of Available Sample and Ladder Wells (Max.) : 12
Minimum Visible Range [s] : 32
Maximum Visible Range [s] : 138
Start Analysis Time Range [s] : 33
End Analysis Time Range [s] : 137.5
Ladder Concentration [pg/μl] : 1950
Uses Standard Area for Ladder Fragments
Lower Marker Concentration [pg/μl] : 125
Upper Marker Concentration [pg/μl] : 75
Used Upper Marker for Quantitation
Standard Curve Fit is Point to Point
Show Data Aligned to Lower and Upper Marker

Integrator Settings

Integration Start Time [s] : 33.05
Integration End Time [s] : 137
Slope Threshold : 0.8
Height Threshold [FU] : 5
Area Threshold : 0.1
Width Threshold [s] : 0.6
Baseline Plateau [s] : 0.5

Filter Settings

Filter Width [s] : 0.5
Polynomial Order : 4

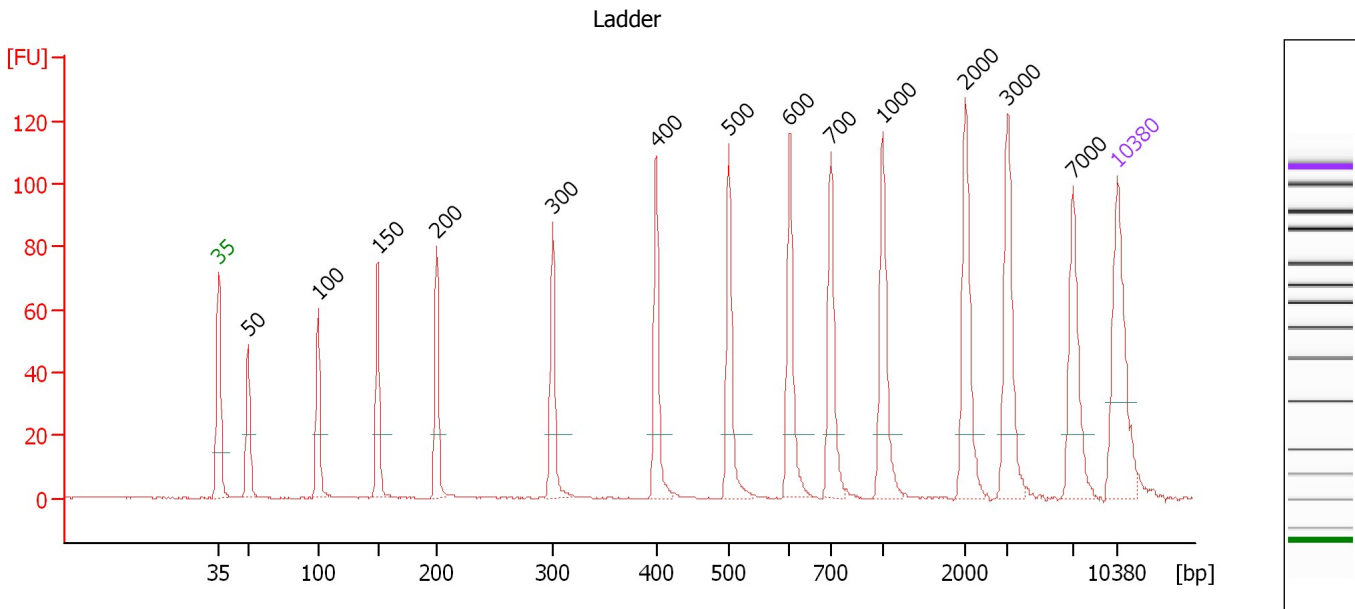
Ladder

Ladder Peak	Size	Area
1	35	160
2	50	210
3	100	208
4	150	221
5	200	242
6	300	270
7	400	305
8	500	306
9	600	336
10	700	321
11	1000	366
12	2000	413
13	3000	411
14	7000	400
15	10380	214

Assay Class: High Sensitivity DNA Assay
 Data Path: C:\...ents and Settings\Bioanalyzer\2013-10-18\2013-10-18_005.xad

Created: 10/18/2013 2:24:55 PM
 Modified: 10/18/2013 3:12:52 PM

Electropherogram Summary



Overall Results for Ladder

Noise: 0.2

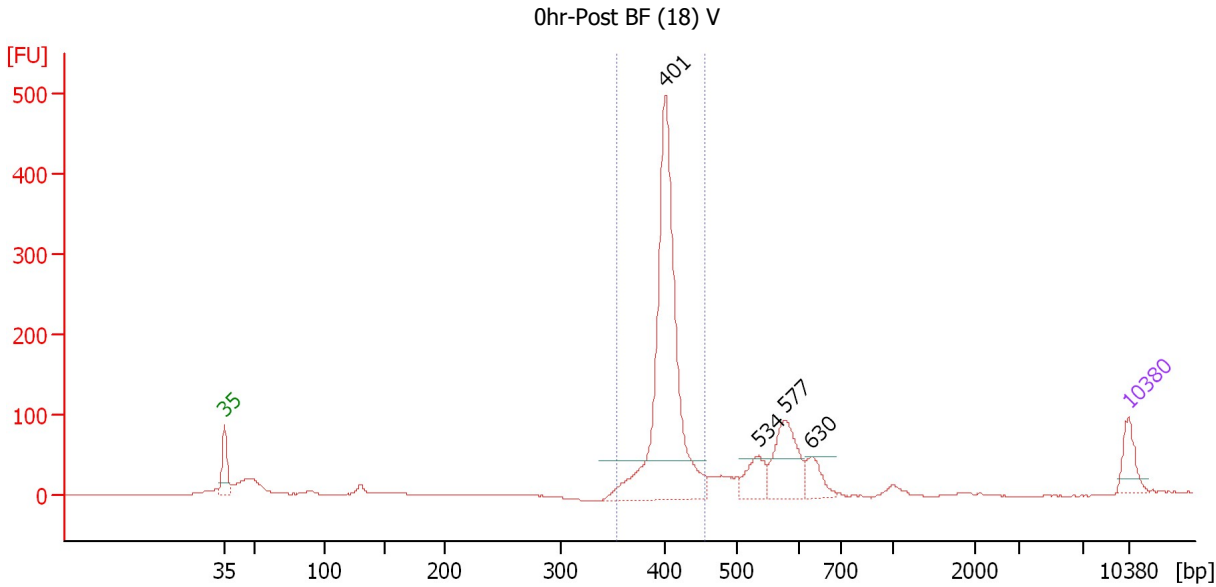
Peak table for Ladder

Peak	Size [bp]	Conc. [pg/μl]	Molarity [pmol/l]	Observations
1	35	125.00	5,411.3	Lower Marker
2	50	150.00	4,545.5	Ladder Peak
3	100	150.00	2,272.7	Ladder Peak
4	150	150.00	1,515.2	Ladder Peak
5	200	150.00	1,136.4	Ladder Peak
6	300	150.00	757.6	Ladder Peak
7	400	150.00	568.2	Ladder Peak
8	500	150.00	454.5	Ladder Peak
9	600	150.00	378.8	Ladder Peak
10	700	150.00	324.7	Ladder Peak
11	1,000	150.00	227.3	Ladder Peak
12	2,000	150.00	113.6	Ladder Peak
13	3,000	150.00	75.8	Ladder Peak
14	7,000	150.00	32.5	Ladder Peak
15	10,380	75.00	10.9	Upper Marker

Assay Class: High Sensitivity DNA Assay
 Data Path: C:\...ents and Settings\Bioanalyzer\2013-10-18\2013-10-18_005.xad

Created: 10/18/2013 2:24:55 PM
 Modified: 10/18/2013 3:12:52 PM

Electropherogram Summary Continued ...



Setpoint Deviations for sample 1 : Ohr-Post BF (18) V

Height Threshold [FU] : 50

Overall Results for sample 1 : Ohr-Post BF (18) V

Number of peaks found: 4 Corr. Area 1: 1,108.2
 Noise: 0.1

Peak table for sample 1 : Ohr-Post BF (18) V

Peak	Size [bp]	Conc. [pg/μl]	Molarity [pmol/l]	Observations
1	35	125.00	5,411.3	Lower Marker
2	401	1,354.04	5,118.3	
3	534	122.54	347.5	
4	577	256.41	673.3	
5	630	92.88	223.3	
6	10,380	75.00	10.9	Upper Marker

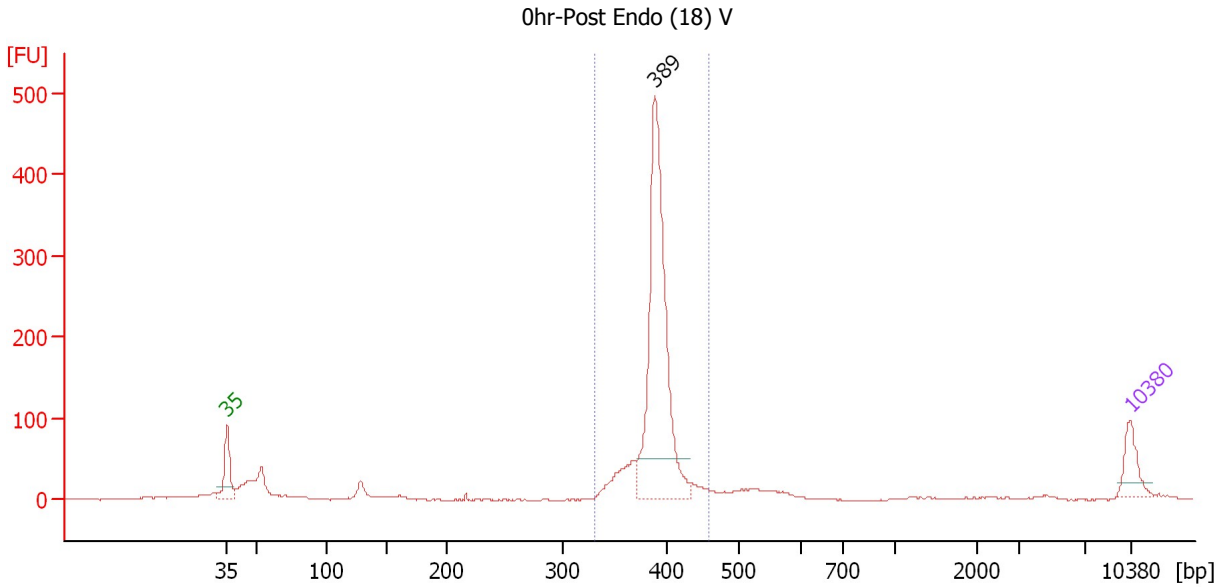
Region table for sample 1 : Ohr-Post BF (18) V

From [bp]	To [bp]	Average Size [bp]	Molarity [pmol/l]	Conc. [pg/μl]	Corr. Area	% of Total	Size distribution in CV [%]	Color
354	456	404	4,703.7	1,251.74	1,108.2	63	3.8	Blue

Assay Class: High Sensitivity DNA Assay
 Data Path: C:\...ents and Settings\Bioanalyzer\2013-10-18\2013-10-18_005.xad

Created: 10/18/2013 2:24:55 PM
 Modified: 10/18/2013 3:12:52 PM

Electropherogram Summary Continued ...



Setpoint Deviations for sample 2 : 0hr-Post Endo (18) V

Height Threshold [FU] : 50

Overall Results for sample 2 : 0hr-Post Endo (18) V

Number of peaks found: 1 Corr. Area 1: 1,152.7
 Noise: 0.7

Peak table for sample 2 : 0hr-Post Endo (18) V

Peak	Size [bp]	Conc. [pg/μl]	Molarity [pmol/l]	Observations
1	35	125.00	5,411.3	Lower Marker
2	389	1,060.21	4,134.5	
3	10,380	75.00	10.9	Upper Marker

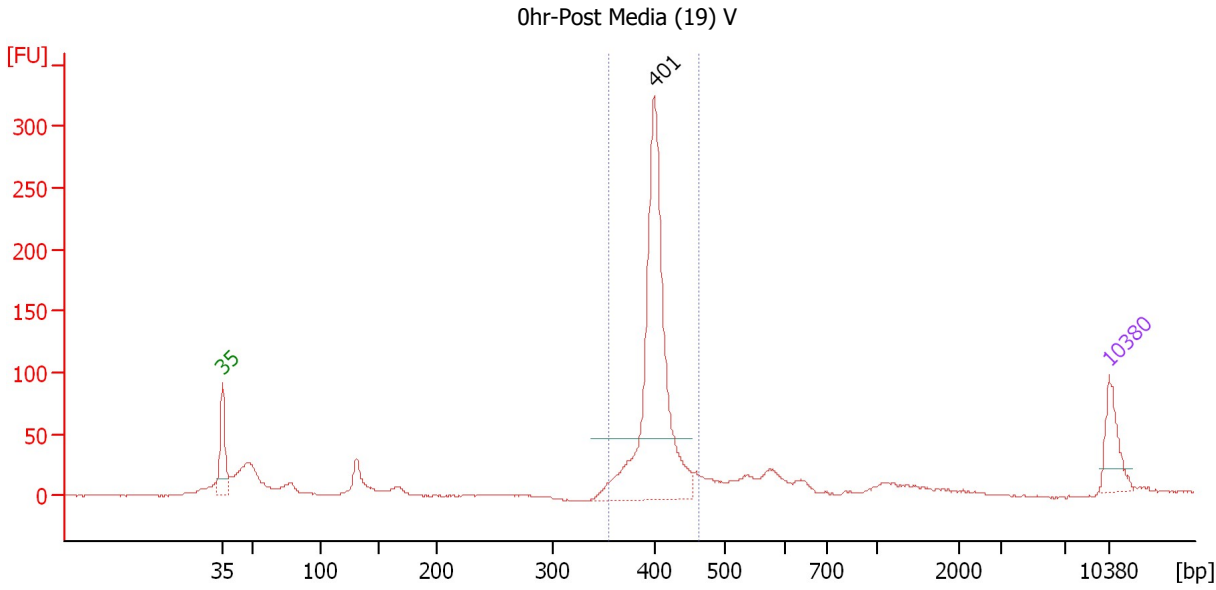
Region table for sample 2 : 0hr-Post Endo (18) V

From [bp]	To [bp]	Average Size [bp]	Molarity [pmol/l]	Conc. [pg/μl]	Corr. Area	% of Total	Size distribution in CV [%]	Color
331	457	390	4,807.8	1,236.25	1,152.7	73	4.4	Blue

Assay Class: High Sensitivity DNA Assay
 Data Path: C:\...ents and Settings\Bioanalyzer\2013-10-18\2013-10-18_005.xad

Created: 10/18/2013 2:24:55 PM
 Modified: 10/18/2013 3:12:52 PM

Electropherogram Summary Continued ...



Setpoint Deviations for sample 3 : 0hr-Post Media (19) V

Height Threshold [FU] : 50

Overall Results for sample 3 : 0hr-Post Media (19) V

Number of peaks found: 1 Corr. Area 1: 739.5
 Noise: 0.3

Peak table for sample 3 : 0hr-Post Media (19) V

Peak	Size [bp]	Conc. [pg/μl]	Molarity [pmol/l]	Observations
1	35	125.00	5,411.3	Lower Marker
2	401	860.20	3,251.1	
3	10,380	75.00	10.9	Upper Marker

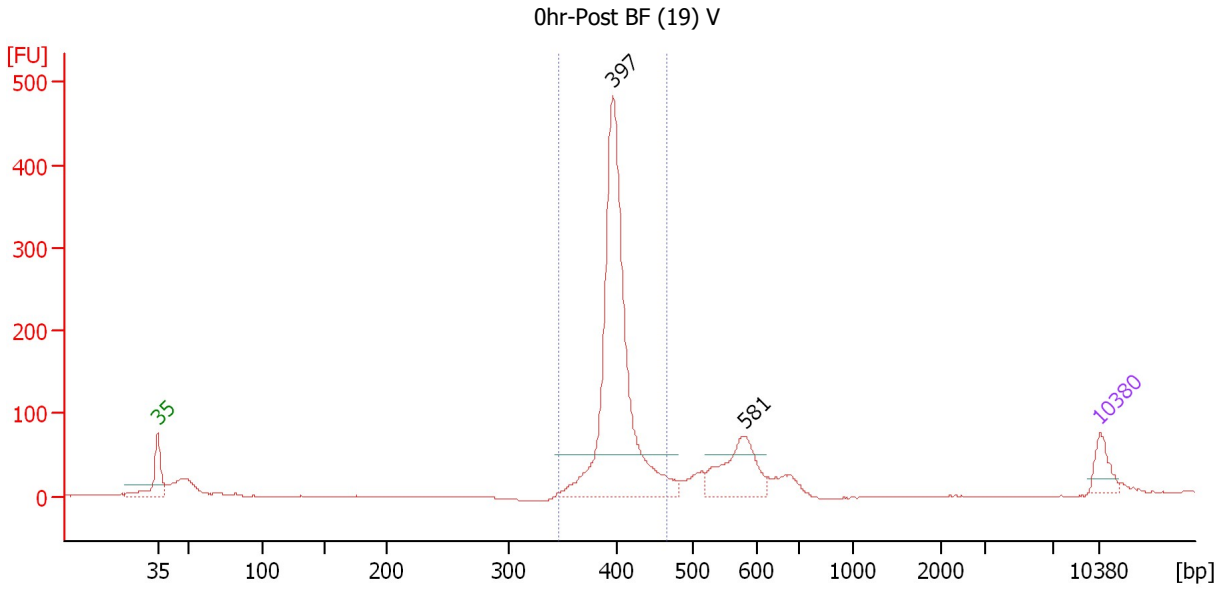
Region table for sample 3 : 0hr-Post Media (19) V

From [bp]	To [bp]	Average Size [bp]	Molarity [pmol/l]	Conc. [pg/μl]	Corr. Area	% of Total	Size distribution in CV [%]	Color
356	464	404	3,052.7	812.00	739.5	63	4.3	Blue

Assay Class: High Sensitivity DNA Assay
 Data Path: C:\...ents and Settings\Bioanalyzer\2013-10-18\2013-10-18_005.xad

Created: 10/18/2013 2:24:55 PM
 Modified: 10/18/2013 3:12:52 PM

Electropherogram Summary Continued ...



Setpoint Deviations for sample 4 : 0hr-Post BF (19) V

Height Threshold [FU] : 50

Overall Results for sample 4 : 0hr-Post BF (19) V

Number of peaks found: 2 Corr. Area 1: 1,164.3
 Noise: 0.6

Peak table for sample 4 : 0hr-Post BF (19) V

Peak	Size [bp]	Conc. [pg/μl]	Molarity [pmol/l]	Observations
1	35	125.00	5,411.3	Lower Marker
2	397	1,654.17	6,313.0	
3	581	308.02	802.6	
4	10,380	75.00	10.9	Upper Marker

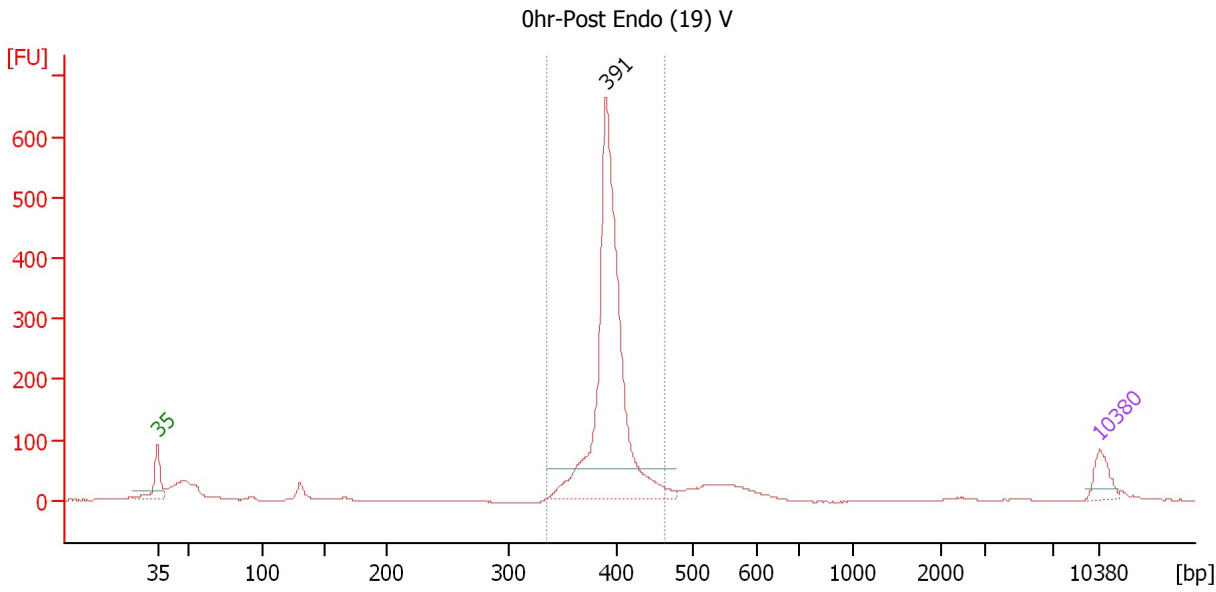
Region table for sample 4 : 0hr-Post BF (19) V

From [bp]	To [bp]	Average Size [bp]	Molarity [pmol/l]	Conc. [pg/μl]	Corr. Area	% of Total	Size distribution in CV [%]	Color
348	467	402	5,924.4	1,570.27	1,164.3	70	4.4	Blue

Assay Class: High Sensitivity DNA Assay
 Data Path: C:\...ents and Settings\Bioanalyzer\2013-10-18\2013-10-18_005.xad

Created: 10/18/2013 2:24:55 PM
 Modified: 10/18/2013 3:12:52 PM

Electropherogram Summary Continued ...



Setpoint Deviations for sample 5 : 0hr-Post Endo (19) V

Height Threshold [FU] : 50

Overall Results for sample 5 : 0hr-Post Endo (19) V

Number of peaks found: 1 Corr. Area 1: 1,645.7
 Noise: 0.6

Peak table for sample 5 : 0hr-Post Endo (19) V

Peak	Size [bp]	Conc. [pg/μl]	Molarity [pmol/l]	Observations
1	35	125.00	5,411.3	Lower Marker
2	391	1,847.16	7,161.7	
3	10,380	75.00	10.9	Upper Marker

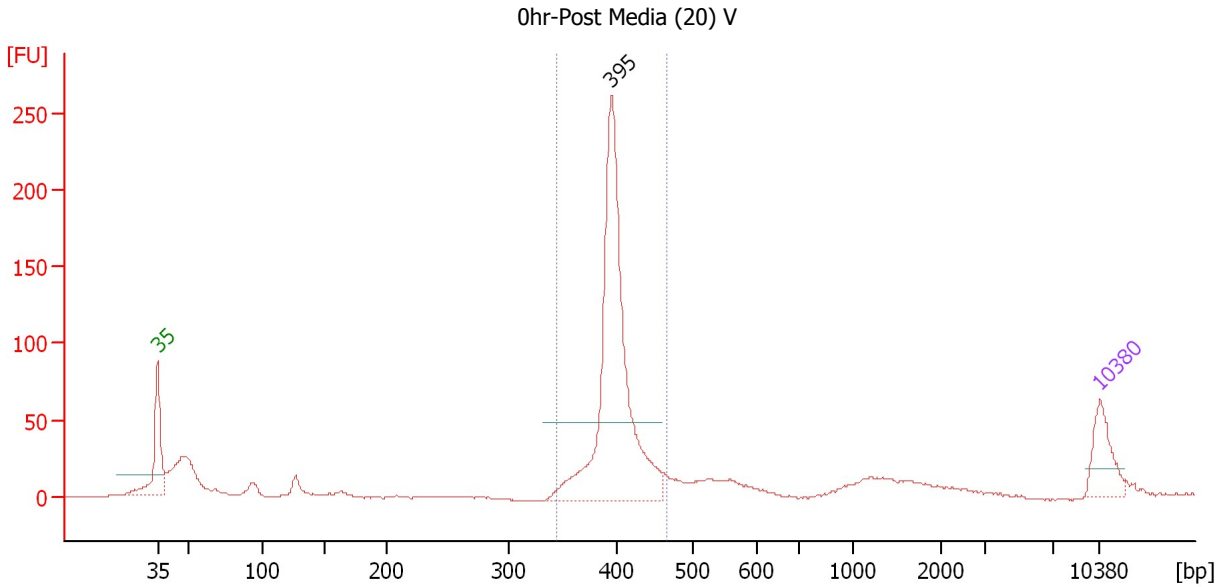
Region table for sample 5 : 0hr-Post Endo (19) V

From [bp]	To [bp]	Average Size [bp]	Molarity [pmol/l]	Conc. [pg/μl]	Corr. Area	% of Total	Size distribution in CV [%]	Color
336	463	395	7,037.6	1,831.54	1,645.7	76	4.7	Blue

Assay Class: High Sensitivity DNA Assay
 Data Path: C:\...ents and Settings\Bioanalyzer\2013-10-18\2013-10-18_005.xad

Created: 10/18/2013 2:24:55 PM
 Modified: 10/18/2013 3:12:52 PM

Electropherogram Summary Continued ...



Setpoint Deviations for sample 6 : 0hr-Post Media (20) V

Height Threshold [FU] : 50

Overall Results for sample 6 : 0hr-Post Media (20) V

Number of peaks found: 1 Corr. Area 1: 647.3
 Noise: 0.3

Peak table for sample 6 : 0hr-Post Media (20) V

Peak	Size [bp]	Conc. [pg/μl]	Molarity [pmol/l]	Observations
1	35	125.00	5,411.3	Lower Marker
2	395	843.11	3,230.0	
3	10,380	75.00	10.9	Upper Marker

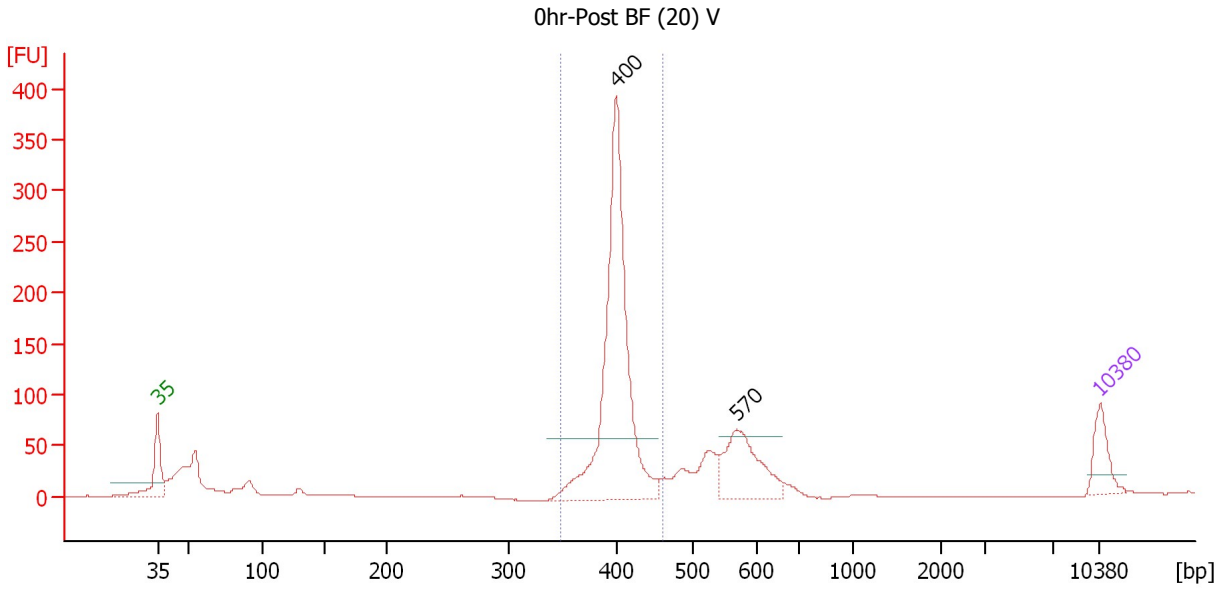
Region table for sample 6 : 0hr-Post Media (20) V

From [bp]	To [bp]	Average Size [bp]	Molarity [pmol/l]	Conc. [pg/μl]	Corr. Area	% of Total	Size distribution in CV [%]	Color
345	468	401	3,057.4	807.63	647.3	63	4.9	Blue

Assay Class: High Sensitivity DNA Assay
 Data Path: C:\...ents and Settings\Bioanalyzer\2013-10-18\2013-10-18_005.xad

Created: 10/18/2013 2:24:55 PM
 Modified: 10/18/2013 3:12:52 PM

Electropherogram Summary Continued ...



Setpoint Deviations for sample 7 : 0hr-Post BF (20) V

Height Threshold [FU] : 60

Overall Results for sample 7 : 0hr-Post BF (20) V

Number of peaks found: 2 Corr. Area 1: 875.8
 Noise: 0.4

Peak table for sample 7 : 0hr-Post BF (20) V

Peak	Size [bp]	Conc. [pg/µl]	Molarity [pmol/l]	Observations
1	35	125.00	5,411.3	Lower Marker
2	400	1,038.54	3,935.1	
3	570	251.96	669.2	
4	10,380	75.00	10.9	Upper Marker

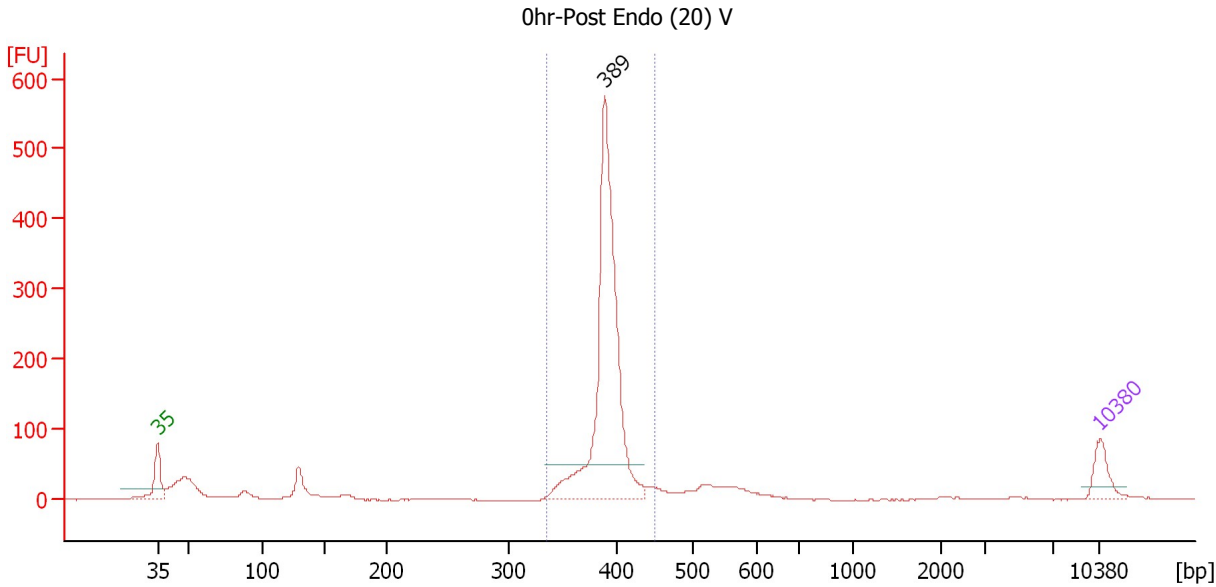
Region table for sample 7 : 0hr-Post BF (20) V

From [bp]	To [bp]	Average Size [bp]	Molarity [pmol/l]	Conc. [pg/µl]	Corr. Area	% of Total	Size distribution in CV [%]	Color
348	461	402	3,691.3	977.36	875.8	60	4.0	Blue

Assay Class: High Sensitivity DNA Assay
 Data Path: C:\...ents and Settings\Bioanalyzer\2013-10-18\2013-10-18_005.xad

Created: 10/18/2013 2:24:55 PM
 Modified: 10/18/2013 3:12:52 PM

Electropherogram Summary Continued ...



Setpoint Deviations for sample 8 : 0hr-Post Endo (20) V

Height Threshold [FU] : 50

Overall Results for sample 8 : 0hr-Post Endo (20) V

Number of peaks found: 1 Corr. Area 1: 1,209.3
 Noise: 0.5

Peak table for sample 8 : 0hr-Post Endo (20) V

Peak	Size [bp]	Conc. [pg/μl]	Molarity [pmol/l]	Observations
1	35	125.00	5,411.3	Lower Marker
2	389	1,313.07	5,110.7	
3	10,380	75.00	10.9	Upper Marker

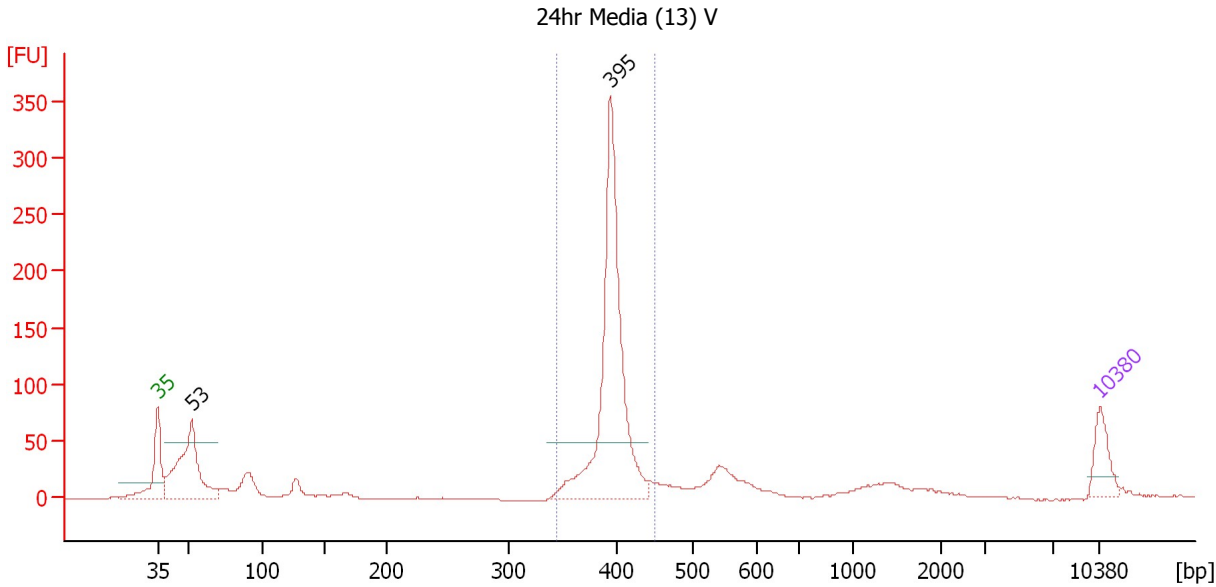
Region table for sample 8 : 0hr-Post Endo (20) V

From [bp]	To [bp]	Average Size [bp]	Molarity [pmol/l]	Conc. [pg/μl]	Corr. Area	% of Total	Size distribution in CV [%]	Color
336	452	392	5,143.5	1,327.76	1,209.3	74	4.0	Blue

Assay Class: High Sensitivity DNA Assay
 Data Path: C:\...ents and Settings\Bioanalyzer\2013-10-18\2013-10-18_005.xad

Created: 10/18/2013 2:24:55 PM
 Modified: 10/18/2013 3:12:52 PM

Electropherogram Summary Continued ...



Setpoint Deviations for sample 9 : 24hr Media (13) V

Height Threshold [FU] : 50

Overall Results for sample 9 : 24hr Media (13) V

Number of peaks found: 2 Corr. Area 1: 704.1
 Noise: 0.3

Peak table for sample 9 : 24hr Media (13) V

Peak	Size [bp]	Conc. [pg/µl]	Molarity [pmol/l]	Observations
1	35	125.00	5,411.3	Lower Marker
2	53	463.25	13,341.6	
3	395	904.59	3,474.1	
4	10,380	75.00	10.9	Upper Marker

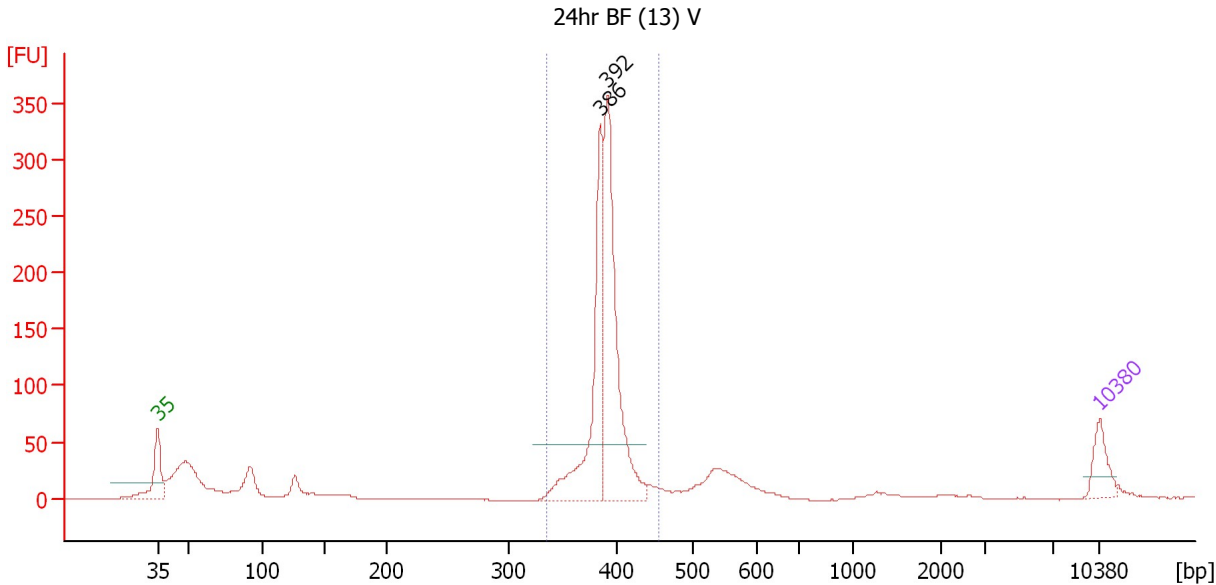
Region table for sample 9 : 24hr Media (13) V

From [bp]	To [bp]	Average Size [bp]	Molarity [pmol/l]	Conc. [pg/µl]	Corr. Area	% of Total	Size distribution in CV [%]	Color
346	452	397	3,400.6	889.31	704.1	55	3.9	Blue

Assay Class: High Sensitivity DNA Assay
 Data Path: C:\...ents and Settings\Bioanalyzer\2013-10-18\2013-10-18_005.xad

Created: 10/18/2013 2:24:55 PM
 Modified: 10/18/2013 3:12:52 PM

Electropherogram Summary Continued ...



Setpoint Deviations for sample 10 : 24hr BF (13) V

Height Threshold [FU] : 50

Overall Results for sample 10 : 24hr BF (13) V

Number of peaks found: 2 Corr. Area 1: 875.0
 Noise: 0.3

Peak table for sample 10 : 24hr BF (13) V

Peak	Size [bp]	Conc. [pg/μl]	Molarity [pmol/l]	Observations
1	35	125.00	5,411.3	Lower Marker
2	386	587.19	2,307.6	
3	392	744.96	2,880.5	
4	10,380	75.00	10.9	Upper Marker

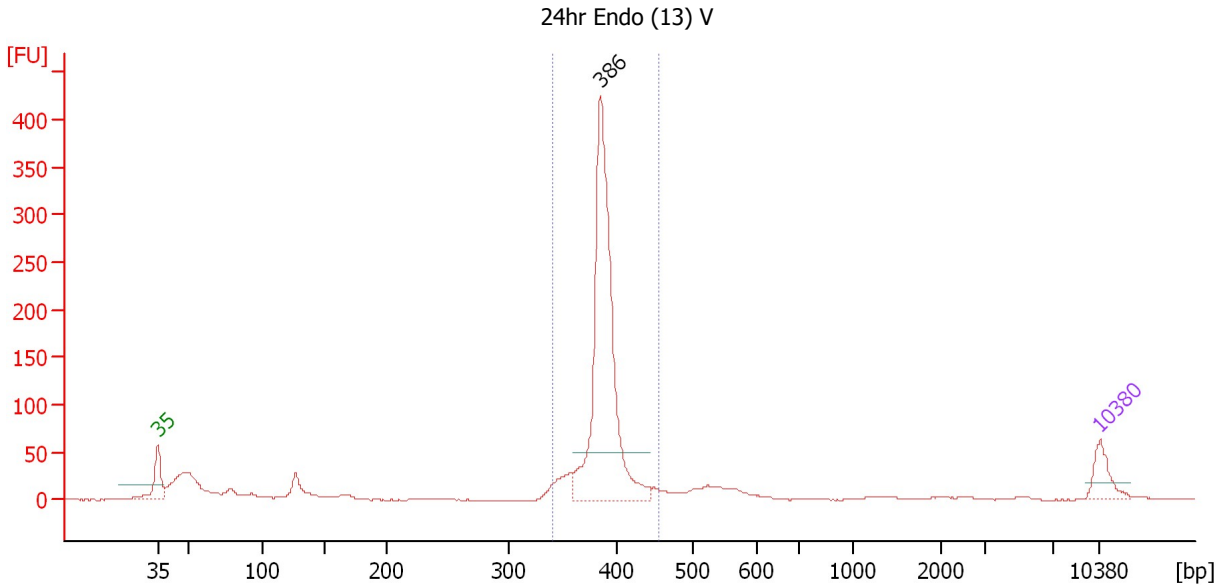
Region table for sample 10 : 24hr BF (13) V

From [bp]	To [bp]	Average Size [bp]	Molarity [pmol/l]	Conc. [pg/μl]	Corr. Area	% of Total	Size distribution in CV [%]	Color
336	457	391	5,067.7	1,305.11	875.0	67	4.1	Blue

Assay Class: High Sensitivity DNA Assay
 Data Path: C:\...ents and Settings\Bioanalyzer\2013-10-18\2013-10-18_005.xad

Created: 10/18/2013 2:24:55 PM
 Modified: 10/18/2013 3:12:52 PM

Electropherogram Summary Continued ...



Setpoint Deviations for sample 11 : 24hr Endo (13) V

Height Threshold [FU] : 50

Overall Results for sample 11 : 24hr Endo (13) V

Number of peaks found: 1 Corr. Area 1: 888.9
 Noise: 0.3

Peak table for sample 11 : 24hr Endo (13) V

Peak	Size [bp]	Conc. [pg/μl]	Molarity [pmol/l]	Observations
1	35	125.00	5,411.3	Lower Marker
2	386	1,249.30	4,908.8	
3	10,380	75.00	10.9	Upper Marker

Region table for sample 11 : 24hr Endo (13) V

From [bp]	To [bp]	Average Size [bp]	Molarity [pmol/l]	Conc. [pg/μl]	Corr. Area	% of Total	Size distribution in CV [%]	Color
341	456	388	5,097.6	1,304.87	888.9	71	4.1	Blue

Assay Class: High Sensitivity DNA Assay
Data Path: C:\...ents and Settings\Bioanalyzer\2013-10-18\2013-10-18_005.xad

Created: 10/18/2013 2:24:55 PM
Modified: 10/18/2013 3:12:52 PM

Gel Image

