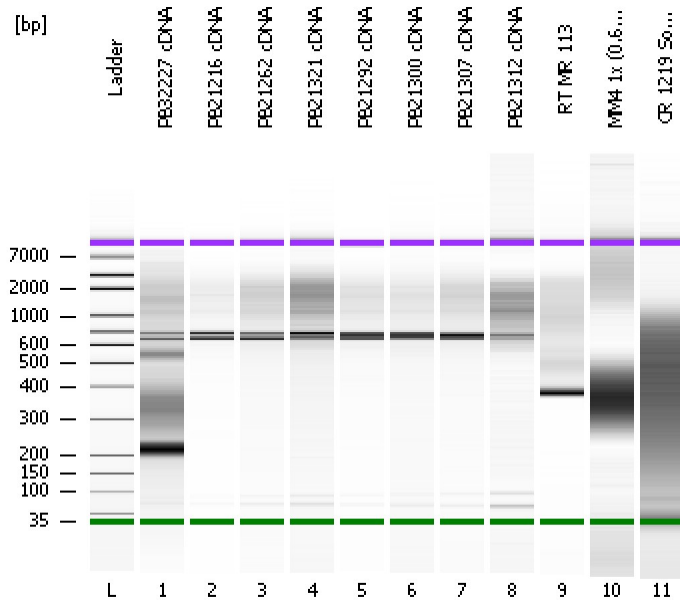


Assay Class: High Sensitivity DNA Assay
Data Path: C:\...ents and Settings\Bioanalyzer\2013-10-18\2013-10-18_007.xad

Created: 10/18/2013 5:13:57 PM
Modified: 10/18/2013 5:57:11 PM

Electrophoresis File Run Summary



Instrument Information:

Instrument Name: DE13701086 Firmware: C.01.069
Serial#: DE13701086 Type: G2938B

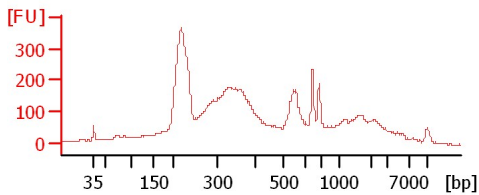
Assay Information:

Assay Origin Path: C:\Program Files\Agilent\2100 bioanalyzer\2100 expert\assays\dsDNA\High Sensitivity DNA.xsy
Assay Class: High Sensitivity DNA Assay
Version: 1.03
Assay Comments: Copyright © 2003-2010 Agilent Technologies

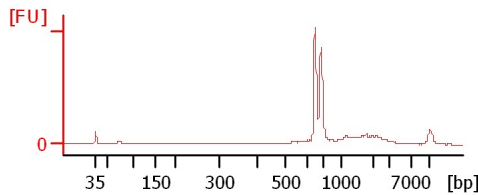
Chip Information:

Chip Lot #:
Reagent Kit Lot #:
Chip Comments:

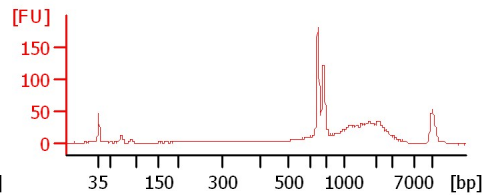
PB32227 cDNA



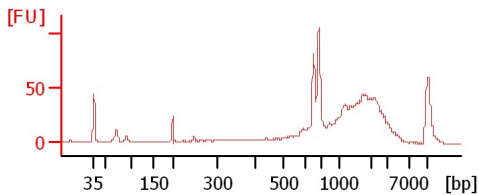
PB21216 cDNA



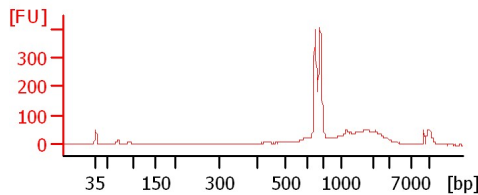
PB21262 cDNA



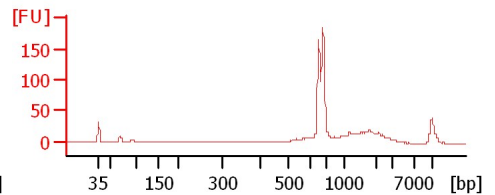
PB21321 cDNA



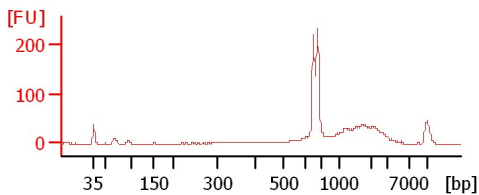
PB21292 cDNA



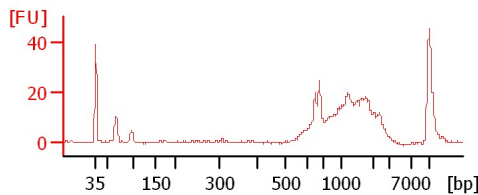
PB21300 cDNA



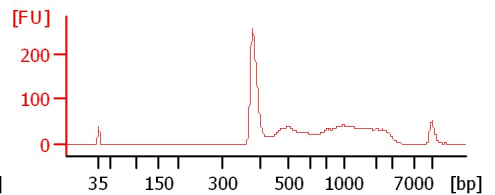
PB21307 cDNA



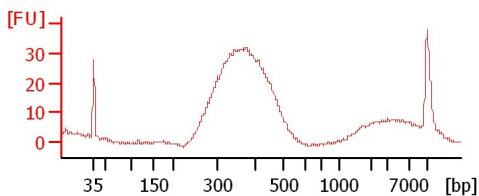
PB21312 cDNA



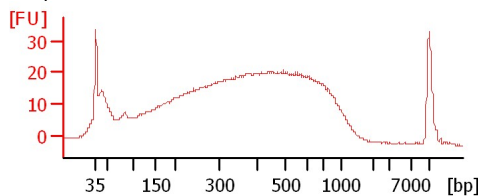
RT MR 113



MM4 1x (0.6x Supernatant) 1:16



CR 1219 Soni-350bp 1:5



Assay Class: High Sensitivity DNA Assay
Data Path: C:\...ents and Settings\Bioanalyzer\2013-10-18\2013-10-18_007.xad

Created: 10/18/2013 5:13:57 PM
Modified: 10/18/2013 5:57:11 PM

Electrophoresis File Run Summary (Chip Summary)

Sample Name	Sample Comment	Rest. Digest	Status	Observation	Result Label	Result Color
PB32227 cDNA		<input type="checkbox"/>	✓			
PB21216 cDNA		<input type="checkbox"/>	✓			
PB21262 cDNA		<input type="checkbox"/>	✓			
PB21321 cDNA		<input type="checkbox"/>	✓			
PB21292 cDNA		<input type="checkbox"/>	✓			
PB21300 cDNA		<input type="checkbox"/>	✓			
PB21307 cDNA		<input type="checkbox"/>	✓			
PB21312 cDNA		<input type="checkbox"/>	✓			
RT MR 113		<input type="checkbox"/>	✓			
MM4 1x (0.6x Supernatant) 1:16		<input type="checkbox"/>	✓			
CR 1219 Soni-350bp 1:5	6Cycles	<input type="checkbox"/>	✓			
Ladder		<input type="checkbox"/>	✓			

Chip Lot #

Reagent Kit Lot #

Chip Comments :

Assay Class: High Sensitivity DNA Assay
Data Path: C:\...ents and Settings\Bioanalyzer\2013-10-18\2013-10-18_007.xad

Created: 10/18/2013 5:13:57 PM
Modified: 10/18/2013 5:57:11 PM

Electrophoresis Assay Details

General Analysis Settings

Number of Available Sample and Ladder Wells (Max.) : 12
Minimum Visible Range [s] : 32
Maximum Visible Range [s] : 138
Start Analysis Time Range [s] : 33
End Analysis Time Range [s] : 137.5
Ladder Concentration [pg/μl] : 1950
Uses Standard Area for Ladder Fragments
Lower Marker Concentration [pg/μl] : 125
Upper Marker Concentration [pg/μl] : 75
Used Upper Marker for Quantitation
Standard Curve Fit is Point to Point
Show Data Aligned to Lower and Upper Marker

Integrator Settings

Integration Start Time [s] : 33.05
Integration End Time [s] : 137
Slope Threshold : 0.8
Height Threshold [FU] : 5
Area Threshold : 0.1
Width Threshold [s] : 0.6
Baseline Plateau [s] : 0.5

Filter Settings

Filter Width [s] : 0.5
Polynomial Order : 4

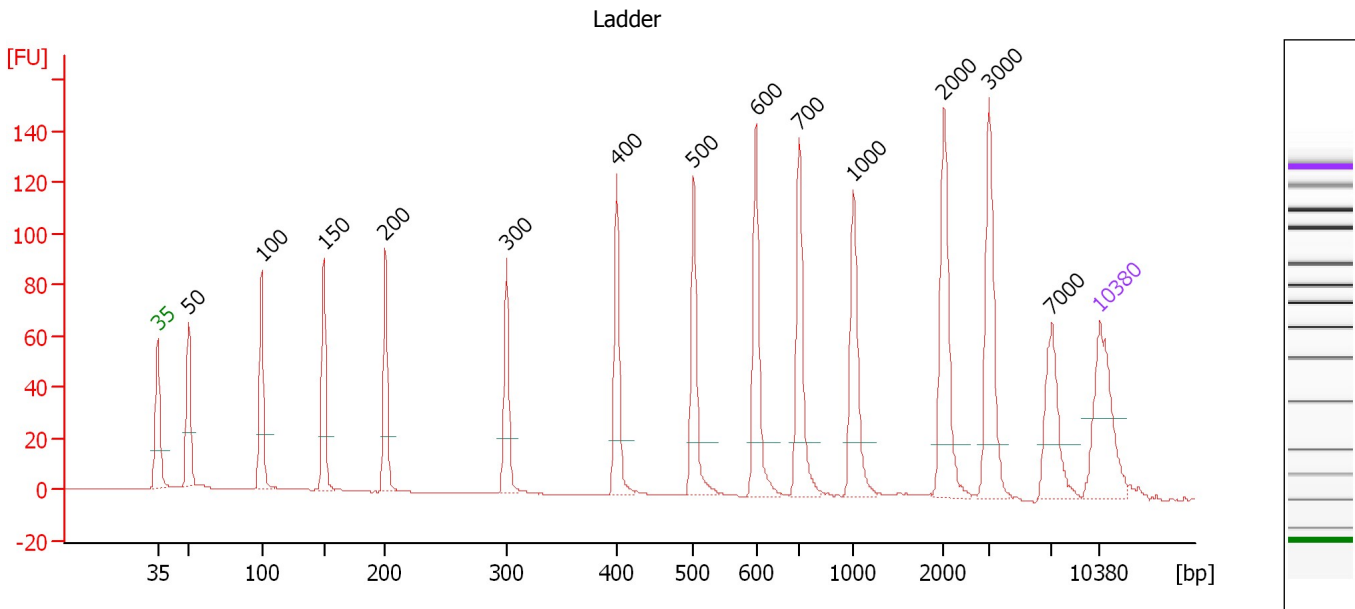
Ladder

Ladder Peak	Size	Area
1	35	160
2	50	210
3	100	208
4	150	221
5	200	242
6	300	270
7	400	305
8	500	306
9	600	336
10	700	321
11	1000	366
12	2000	413
13	3000	411
14	7000	400
15	10380	214

Assay Class: High Sensitivity DNA Assay
 Data Path: C:\...ents and Settings\Bioanalyzer\2013-10-18\2013-10-18_007.xad

Created: 10/18/2013 5:13:57 PM
 Modified: 10/18/2013 5:57:11 PM

Electropherogram Summary



Overall Results for Ladder

Noise: 0.1

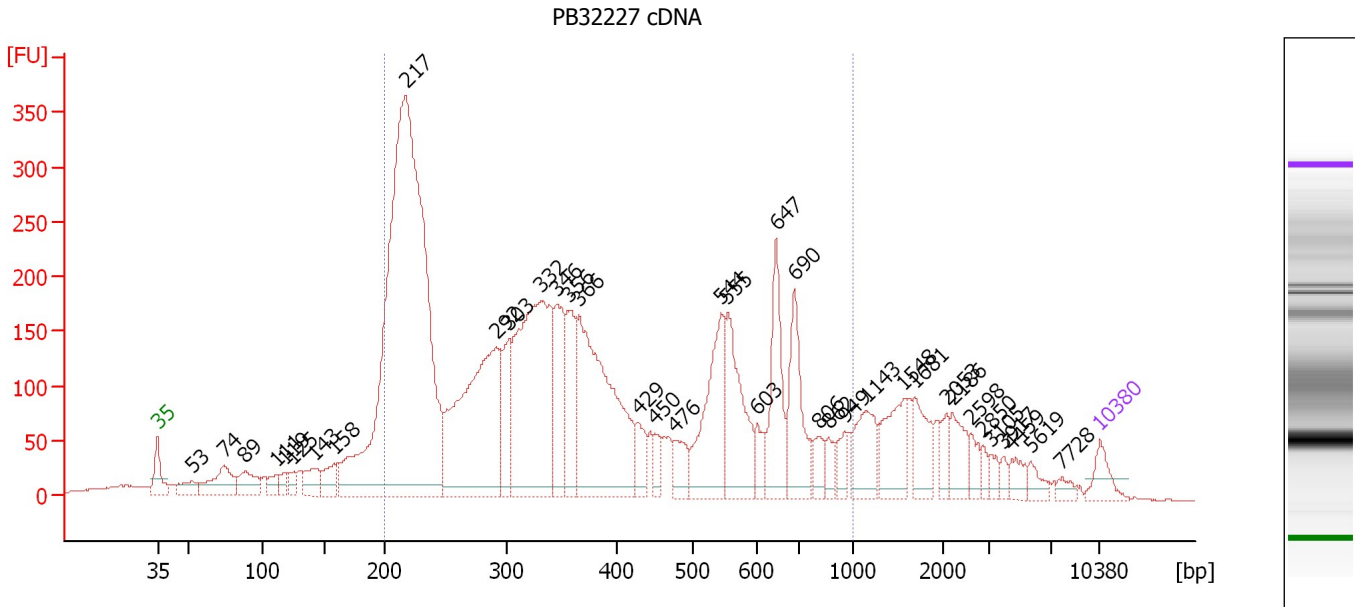
Peak table for Ladder

Peak	Size [bp]	Conc. [pg/μl]	Molarity [pmol/l]	Observations
1	35	125.00	5,411.3	Lower Marker
2	50	150.00	4,545.5	Ladder Peak
3	100	150.00	2,272.7	Ladder Peak
4	150	150.00	1,515.2	Ladder Peak
5	200	150.00	1,136.4	Ladder Peak
6	300	150.00	757.6	Ladder Peak
7	400	150.00	568.2	Ladder Peak
8	500	150.00	454.5	Ladder Peak
9	600	150.00	378.8	Ladder Peak
10	700	150.00	324.7	Ladder Peak
11	1,000	150.00	227.3	Ladder Peak
12	2,000	150.00	113.6	Ladder Peak
13	3,000	150.00	75.8	Ladder Peak
14	7,000	150.00	32.5	Ladder Peak
15	10,380	75.00	10.9	Upper Marker

Assay Class: High Sensitivity DNA Assay
 Data Path: C:\...ents and Settings\Bioanalyzer\2013-10-18\2013-10-18_007.xad

Created: 10/18/2013 5:13:57 PM
 Modified: 10/18/2013 5:57:11 PM

Electropherogram Summary Continued ...



Setpoint Deviations for sample 1 : PB32227 cDNA

Height Threshold [FU] : 10

Overall Results for sample 1 : PB32227 cDNA

Number of peaks found: 38 Corr. Area 1: 6,121.8
 Noise: 0.5

Peak table for sample 1 : PB32227 cDNA

Peak	Size [bp]	Conc. [pg/μl]	Molarity [pmol/l]	Observations
1	35	125.00	5,411.3	Lower Marker
2	53	98.74	2,833.5	
3	74	245.71	5,017.0	
4	89	162.09	2,771.5	
5	111	66.44	904.6	
6	119	53.02	677.7	
7	125	60.59	732.6	
8	143	134.71	1,425.3	
9	158	124.61	1,192.9	
10	217	4,227.11	29,554.3	
11	292	1,280.34	6,645.3	
12	303	287.83	1,441.1	
13	332	1,298.87	5,934.4	
14	346	377.36	1,650.6	
15	356	323.71	1,376.7	
16	366	1,145.11	4,739.1	
17	429	114.66	405.1	
18	450	69.31	233.4	
19	476	122.77	391.2	
20	544	510.30	1,421.1	
21	555	433.76	1,184.7	
22	603	86.61	217.6	

Assay Class: High Sensitivity DNA Assay
 Data Path: C:\...ents and Settings\Bioanalyzer\2013-10-18\2013-10-18_007.xad


Created: 10/18/2013 5:13:57 PM
 Modified: 10/18/2013 5:57:11 PM

Electropherogram Summary Continued ...

... Peak table for sample 1 : PB32227 cDNA

Peak	Size [bp]	Conc. [pg/µl]	Molarity [pmol/l]	Observations
23	647	360.21	844.1	
24	690	348.16	764.4	
25	806	80.12	150.6	
26	862	63.76	112.0	
27	949	68.71	109.7	
28	1,143	199.67	264.6	
29	1,548	220.25	215.5	
30	1,681	159.51	143.8	
31	2,053	63.51	46.9	
32	2,186	118.50	82.1	
33	2,598	57.10	33.3	
34	2,850	31.06	16.5	
35	3,105	36.11	17.6	
36	3,917	26.53	10.3	
37	4,459	53.38	18.1	
38	5,619	47.13	12.7	
39	7,728	29.55	5.8	
40	10,380	75.00	10.9	Upper Marker

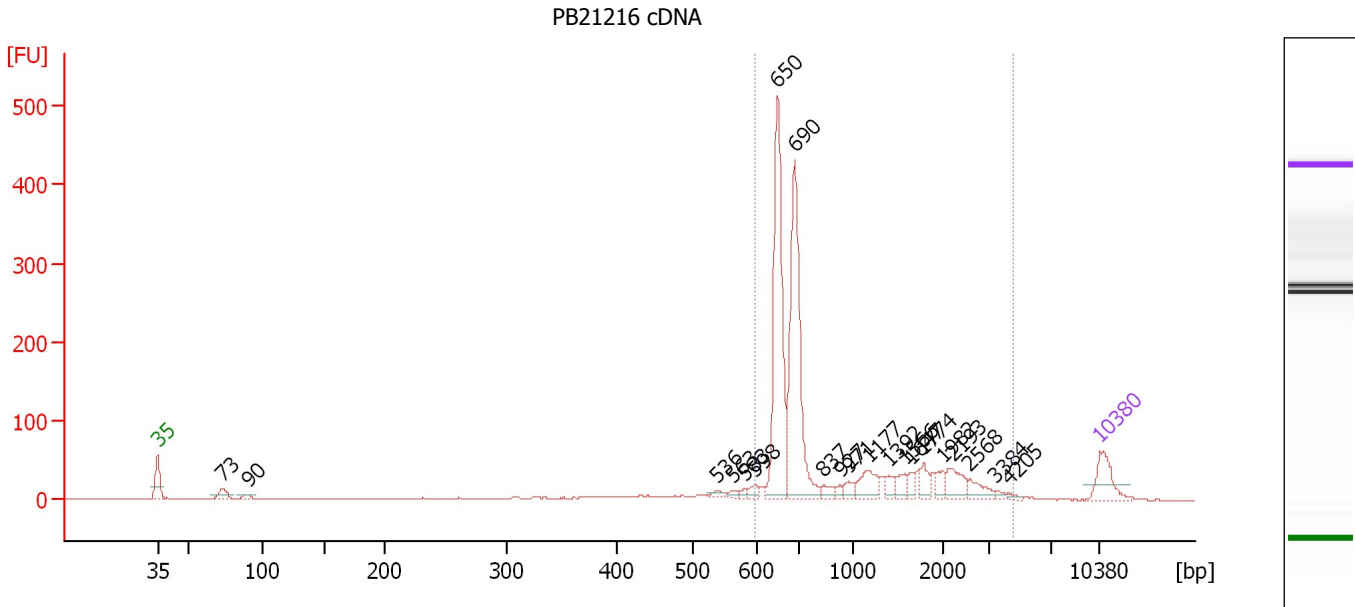
Region table for sample 1 : PB32227 cDNA

From [bp]	To [bp]	Average Size [bp]	Molarity [pmol/l]	Conc. [pg/µl]	Corr. Area	% of Total	Size distribution in CV [%]	Color
200	1,000	394	52,534.9	10,782.45	6,121.8	76	44.7	

Assay Class: High Sensitivity DNA Assay
 Data Path: C:\...ents and Settings\Bioanalyzer\2013-10-18\2013-10-18_007.xad

Created: 10/18/2013 5:13:57 PM
 Modified: 10/18/2013 5:57:11 PM

Electropherogram Summary Continued ...



Overall Results for sample 2 : PB21216 cDNA

Number of peaks found: 21 Corr. Area 1: 1,254.2
 Noise: 0.3

Peak table for sample 2 : PB21216 cDNA

Peak	Size [bp]	Conc. [pg/μl]	Molarity [pmol/l]	Observations
1	35	125.00	5,411.3	Lower Marker
2	73	41.87	864.1	
3	90	17.65	295.6	
4	536	15.50	43.8	
5	563	10.92	29.4	
6	583	9.14	23.8	
7	598	18.75	47.5	
8	650	540.23	1,259.1	
9	690	545.47	1,198.1	
10	837	22.13	40.1	
11	927	12.72	20.8	
12	971	21.70	33.9	
13	1,177	67.60	87.0	
14	1,392	24.11	26.2	
15	1,566	27.87	27.0	
16	1,647	21.60	19.9	
17	1,774	34.02	29.1	
18	1,982	24.64	18.8	
19	2,193	56.12	38.8	
20	2,568	37.45	22.1	
21	3,384	8.53	3.8	
22	4,205	6.74	2.4	
23	10,380	75.00	10.9	Upper Marker

Assay Class: High Sensitivity DNA Assay
Data Path: C:\...ents and Settings\Bioanalyzer\2013-10-18\2013-10-18_007.xad

Created: 10/18/2013 5:13:57 PM
Modified: 10/18/2013 5:57:11 PM

Electropherogram Summary Continued ...

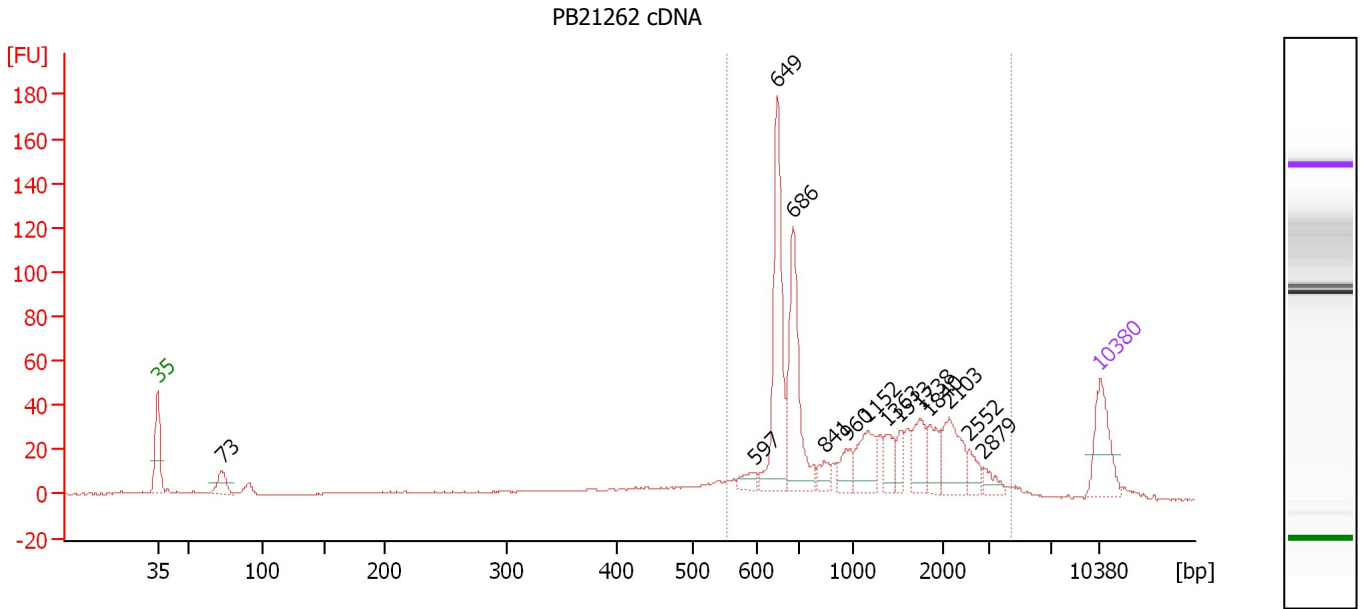
... Region table for sample 2 : PB21216 cDNA

From [bp]	To [bp]	Average Size [bp]	Molarity [pmol/l]	Conc. [pg/μl]	Corr. Area	% of Total	Size distribution in CV [%]	Color
599	4,581	1,049	2,941.3	1,555.23	1,254.2	84	63.2	■

Assay Class: High Sensitivity DNA Assay
 Data Path: C:\...ents and Settings\Bioanalyzer\2013-10-18\2013-10-18_007.xad

Created: 10/18/2013 5:13:57 PM
 Modified: 10/18/2013 5:57:11 PM

Electropherogram Summary Continued ...



Overall Results for sample 3 : PB21262 cDNA

Number of peaks found: 14 Corr. Area 1: 660.3
 Noise: 0.3

Peak table for sample 3 : PB21262 cDNA

Peak	Size [bp]	Conc. [pg/μl]	Molarity [pmol/l]	Observations
1	35	125.00	5,411.3	Lower Marker
2	73	44.10	917.4	
3	597	20.01	50.8	
4	649	240.42	561.4	
5	686	195.07	430.7	
6	841	21.76	39.2	
7	960	34.05	53.7	
8	1,152	63.06	82.9	
9	1,363	32.57	36.2	
10	1,513	24.46	24.5	
11	1,738	50.82	44.3	
12	1,840	40.05	33.0	
13	2,103	71.81	51.7	
14	2,552	23.20	13.8	
15	2,879	17.49	9.2	
16	10,380	75.00	10.9	Upper Marker

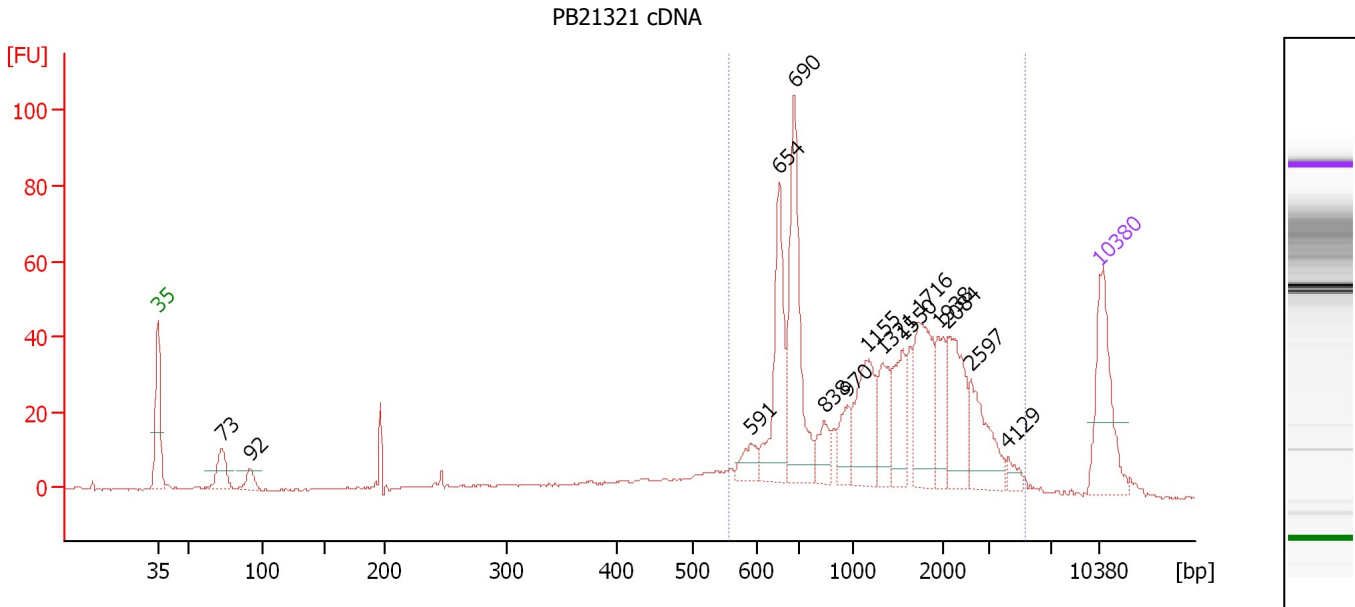
Region table for sample 3 : PB21262 cDNA

From [bp]	To [bp]	Average Size [bp]	Molarity [pmol/l]	Conc. [pg/μl]	Corr. Area	% of Total	Size distribution in CV [%]	Color
554	4,380	1,252	1,647.6	991.65	660.3	77	57.4	Blue

Assay Class: High Sensitivity DNA Assay
 Data Path: C:\...ents and Settings\Bioanalyzer\2013-10-18\2013-10-18_007.xad

Created: 10/18/2013 5:13:57 PM
 Modified: 10/18/2013 5:57:11 PM

Electropherogram Summary Continued ...



Overall Results for sample 4 : PB21321 cDNA

Number of peaks found: 15 Corr. Area 1: 673.1
 Noise: 0.3

Peak table for sample 4 : PB21321 cDNA

Peak	Size [bp]	Conc. [pg/µl]	Molarity [pmol/l]	Observations
1	35	125.00	5,411.3	Lower Marker
2	73	41.24	858.8	
3	92	18.49	304.2	
4	591	21.93	56.2	
5	654	110.13	255.0	
6	690	152.28	334.6	
7	838	26.85	48.5	
8	970	25.87	40.4	
9	1,155	72.67	95.4	
10	1,321	41.22	47.3	
11	1,550	46.41	45.4	
12	1,716	78.46	69.3	
13	1,938	36.06	28.2	
14	2,084	66.68	48.5	
15	2,597	54.30	31.7	
16	4,129	9.25	3.4	
17	10,380	75.00	10.9	Upper Marker

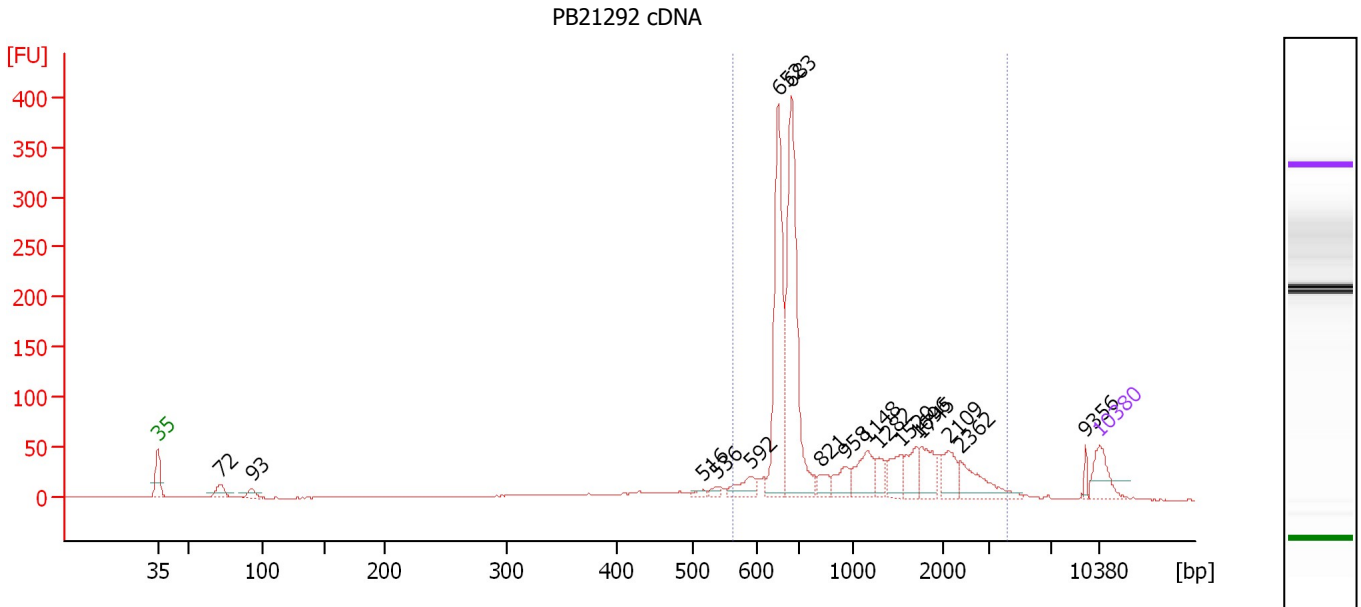
Region table for sample 4 : PB21321 cDNA

From [bp]	To [bp]	Average Size [bp]	Molarity [pmol/l]	Conc. [pg/µl]	Corr. Area	% of Total	Size distribution in CV [%]	Color
557	5,353	1,467	1,257.3	862.12	673.1	82	57.7	Blue

Assay Class: High Sensitivity DNA Assay
 Data Path: C:\...ents and Settings\Bioanalyzer\2013-10-18\2013-10-18_007.xad

Created: 10/18/2013 5:13:57 PM
 Modified: 10/18/2013 5:57:11 PM

Electropherogram Summary Continued ...



Overall Results for sample 5 : PB21292 cDNA

Number of peaks found: 17 Corr. Area 1: 1,271.7
 Noise: 0.3

Peak table for sample 5 : PB21292 cDNA

Peak	Size [bp]	Conc. [pg/µl]	Molarity [pmol/l]	Observations
1	35	125.00	5,411.3	Lower Marker
2	72	53.32	1,128.1	
3	93	31.56	511.9	
4	516	12.76	37.5	
5	536	14.67	41.4	
6	592	59.25	151.7	
7	652	492.43	1,144.9	
8	683	604.42	1,341.1	
9	821	38.45	71.0	
10	958	59.38	93.9	
11	1,148	100.02	132.0	
12	1,282	41.68	49.3	
13	1,520	70.22	70.0	
14	1,696	65.62	58.6	
15	1,745	81.90	71.1	
16	2,109	71.11	51.1	
17	2,362	95.90	61.5	
18	9,356	14.16	2.3	
19	10,380	75.00	10.9	Upper Marker

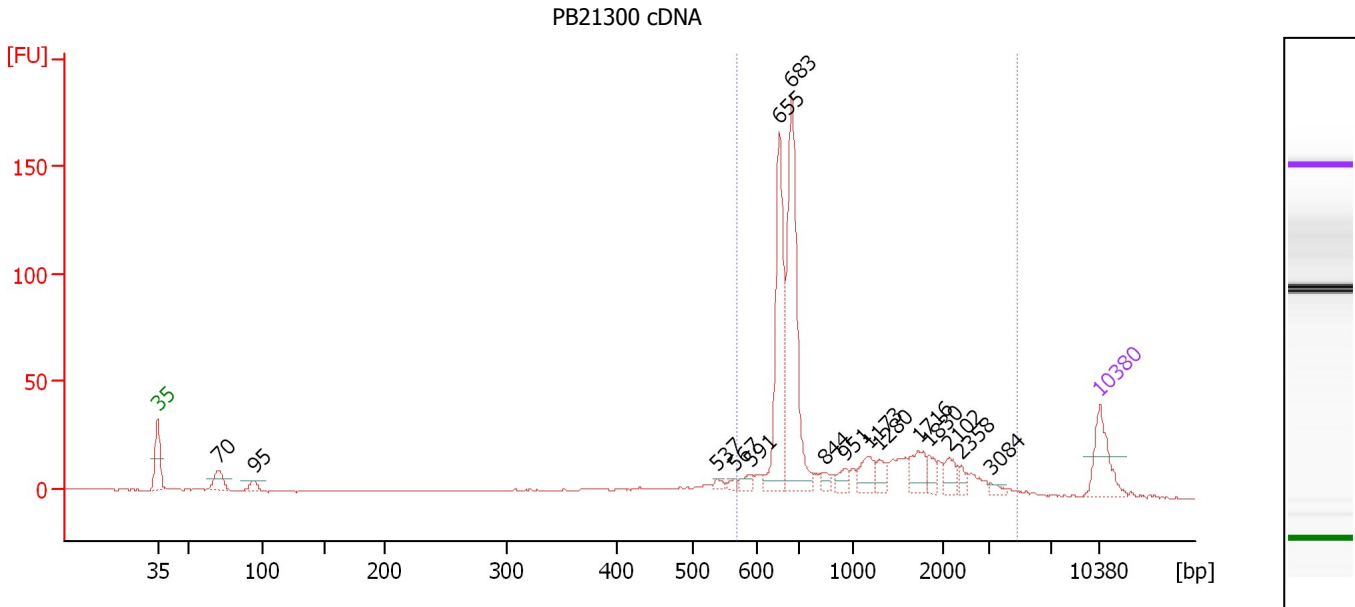
Region table for sample 5 : PB21292 cDNA

From [bp]	To [bp]	Average Size [bp]	Molarity [pmol/l]	Conc. [pg/µl]	Corr. Area	% of Total	Size distribution in CV [%]	Color
562	4,161	1,106	3,421.9	1,881.87	1,271.7	85	59.5	Blue

Assay Class: High Sensitivity DNA Assay
 Data Path: C:\...ents and Settings\Bioanalyzer\2013-10-18\2013-10-18_007.xad

Created: 10/18/2013 5:13:57 PM
 Modified: 10/18/2013 5:57:11 PM

Electropherogram Summary Continued ...



Overall Results for sample 6 : PB21300 cDNA

Number of peaks found: 16 Corr. Area 1: 537.8
 Noise: 0.3

Peak table for sample 6 : PB21300 cDNA

Peak	Size [bp]	Conc. [pg/μl]	Molarity [pmol/l]	Observations
1	35	125.00	5,411.3	Lower Marker
2	70	53.41	1,148.0	
3	95	24.86	397.3	
4	537	10.12	28.5	
5	567	8.95	23.9	
6	591	15.49	39.7	
7	655	289.66	669.6	
8	683	364.96	810.2	
9	844	13.75	24.7	
10	951	20.51	32.7	
11	1,173	39.34	50.8	
12	1,280	24.47	29.0	
13	1,716	43.74	38.6	
14	1,830	20.90	17.3	
15	2,102	27.34	19.7	
16	2,358	12.19	7.8	
17	3,084	8.85	4.3	
18	10,380	75.00	10.9	Upper Marker

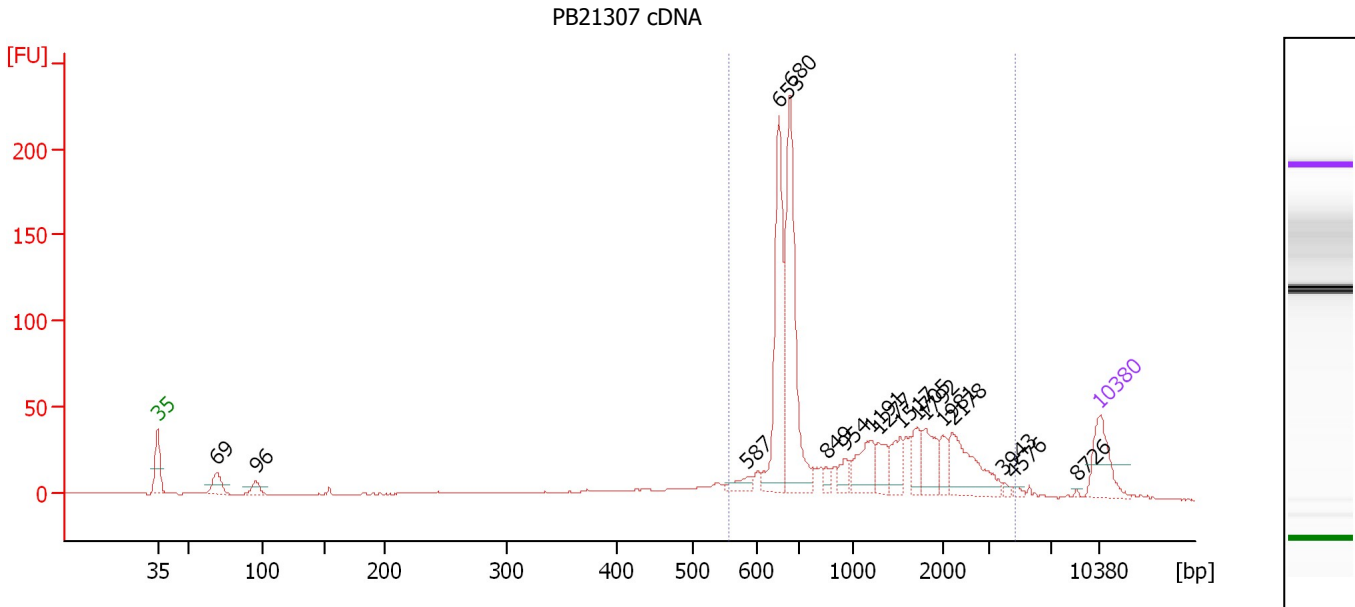
Region table for sample 6 : PB21300 cDNA

From [bp]	To [bp]	Average Size [bp]	Molarity [pmol/l]	Conc. [pg/μl]	Corr. Area	% of Total	Size distribution in CV [%]	Color
570	4,781	1,091	2,014.3	1,092.92	537.8	80	62.8	Blue

Assay Class: High Sensitivity DNA Assay
 Data Path: C:\...ents and Settings\Bioanalyzer\2013-10-18\2013-10-18_007.xad

Created: 10/18/2013 5:13:57 PM
 Modified: 10/18/2013 5:57:11 PM

Electropherogram Summary Continued ...



Overall Results for sample 7 : PB21307 cDNA

Number of peaks found: 17 Corr. Area 1: 821.2
 Noise: 0.2

Peak table for sample 7 : PB21307 cDNA

Peak	Size [bp]	Conc. [pg/μl]	Molarity [pmol/l]	Observations
1	35	125.00	5,411.3	Lower Marker
2	69	53.59	1,170.6	
3	96	30.19	477.2	
4	587	24.07	62.2	
5	653	292.04	678.0	
6	680	354.20	789.0	
7	849	15.87	28.3	
8	954	25.54	40.6	
9	1,191	71.89	91.5	
10	1,277	40.05	47.5	
11	1,517	44.85	44.8	
12	1,705	44.82	39.8	
13	1,792	58.21	49.2	
14	1,981	32.18	24.6	
15	2,178	110.20	76.6	
16	3,943	5.51	2.1	
17	4,576	5.07	1.7	
18	8,726	1.97	0.3	
19	10,380	75.00	10.9	Upper Marker

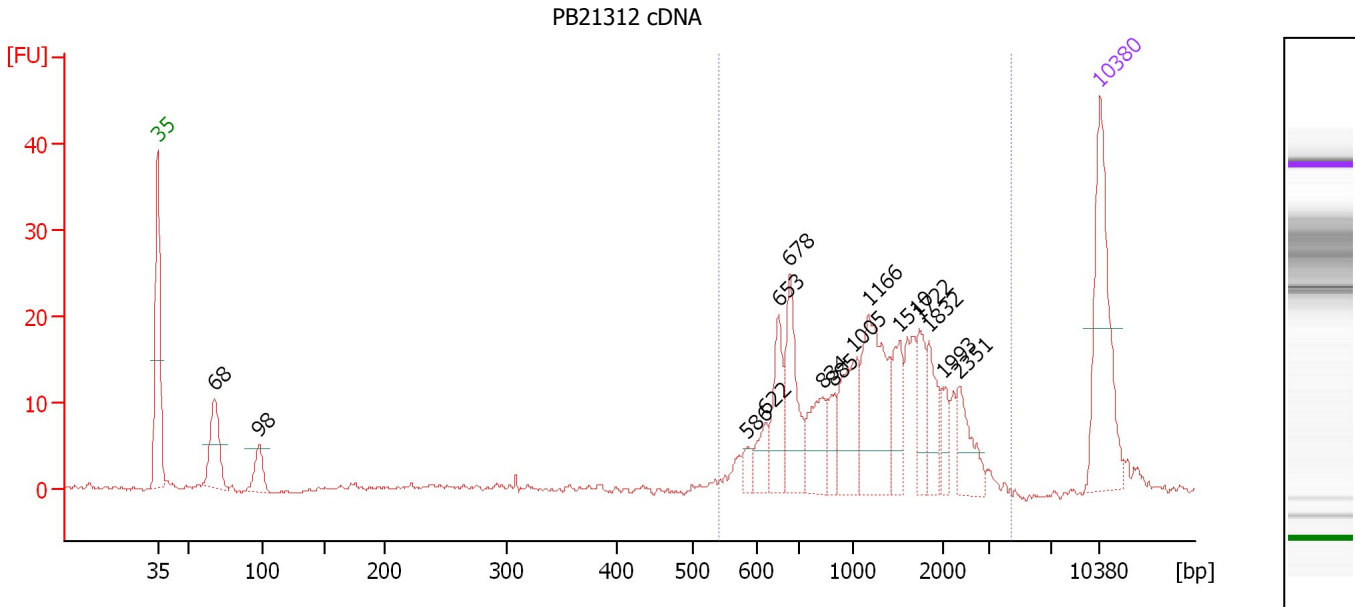
Region table for sample 7 : PB21307 cDNA

From [bp]	To [bp]	Average Size [bp]	Molarity [pmol/l]	Conc. [pg/μl]	Corr. Area	% of Total	Size distribution in CV [%]	Color
557	4,704	1,215	2,203.2	1,278.91	821.2	85	61.1	Blue

Assay Class: High Sensitivity DNA Assay
 Data Path: C:\...ents and Settings\Bioanalyzer\2013-10-18\2013-10-18_007.xad

Created: 10/18/2013 5:13:57 PM
 Modified: 10/18/2013 5:57:11 PM

Electropherogram Summary Continued ...



Overall Results for sample 8 : PB21312 cDNA

Number of peaks found: 15 Corr. Area 1: 234.8
 Noise: 0.3

Peak table for sample 8 : PB21312 cDNA

Peak	Size [bp]	Conc. [pg/µl]	Molarity [pmol/l]	Observations
1	35	125.00	5,411.3	Lower Marker
2	68	53.36	1,189.9	
3	98	24.64	379.6	
4	586	7.93	20.5	
5	622	16.31	39.7	
6	653	37.52	87.1	
7	678	52.23	116.8	
8	834	35.38	64.3	
9	885	14.54	24.9	
10	1,005	43.34	65.4	
11	1,166	73.13	95.1	
12	1,510	28.02	28.1	
13	1,722	22.04	19.4	
14	1,832	23.58	19.5	
15	1,993	11.94	9.1	
16	2,351	25.00	16.1	
17	10,380	75.00	10.9	Upper Marker

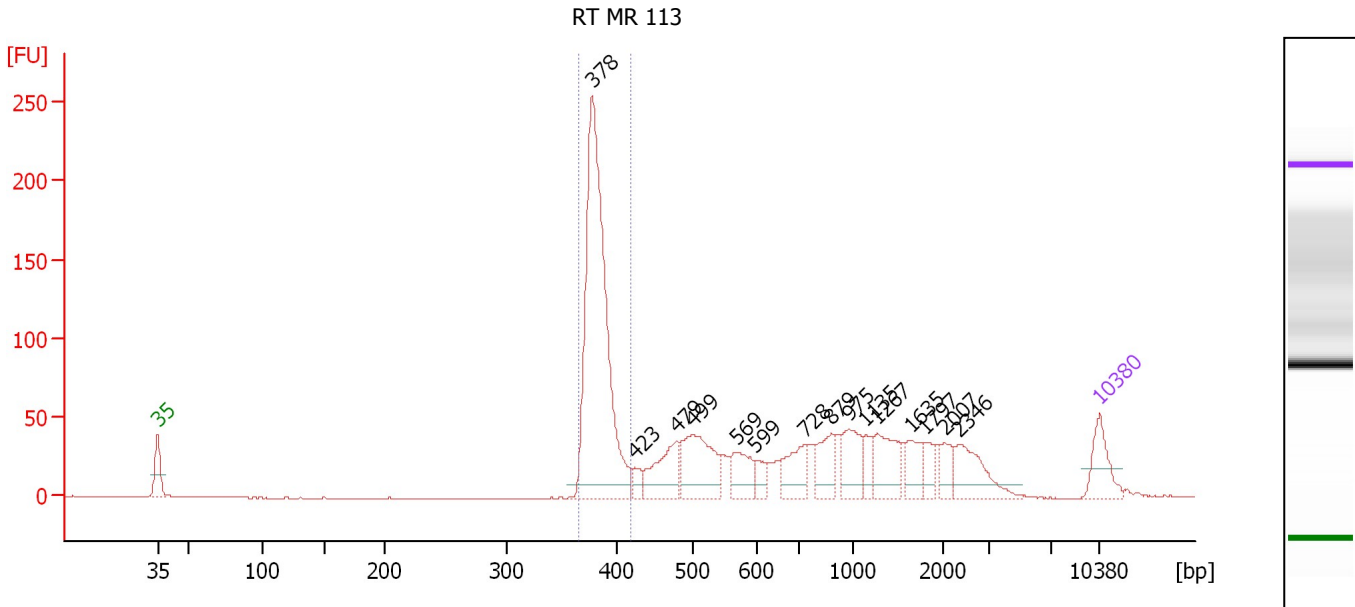
Region table for sample 8 : PB21312 cDNA

From [bp]	To [bp]	Average Size [bp]	Molarity [pmol/l]	Conc. [pg/µl]	Corr. Area	% of Total	Size distribution in CV [%]	Color
540	4,424	1,286	627.0	421.76	234.8	87	45.0	Blue

Assay Class: High Sensitivity DNA Assay
 Data Path: C:\...ents and Settings\Bioanalyzer\2013-10-18\2013-10-18_007.xad

Created: 10/18/2013 5:13:57 PM
 Modified: 10/18/2013 5:57:11 PM

Electropherogram Summary Continued ...



Setpoint Deviations for sample 9 : RT MR 113

Height Threshold [FU] : 8

Overall Results for sample 9 : RT MR 113

Number of peaks found: 15 Corr. Area 1: 553.6
 Noise: 0.2

Peak table for sample 9 : RT MR 113

Peak	Size [bp]	Conc. [pg/µl]	Molarity [pmol/l]	Observations
1	35	125.00	5,411.3	Lower Marker
2	378	1,001.12	4,010.9	
3	423	32.19	115.2	
4	479	145.77	461.5	
5	499	211.77	642.6	
6	569	89.46	238.3	
7	599	36.71	92.9	
8	728	104.24	216.8	
9	879	83.07	143.1	
10	975	107.20	166.5	
11	1,135	42.85	57.2	
12	1,267	111.89	133.8	
13	1,635	63.32	58.7	
14	1,797	40.01	33.7	
15	2,007	47.99	36.2	
16	2,346	107.87	69.7	
17	10,380	75.00	10.9	Upper Marker

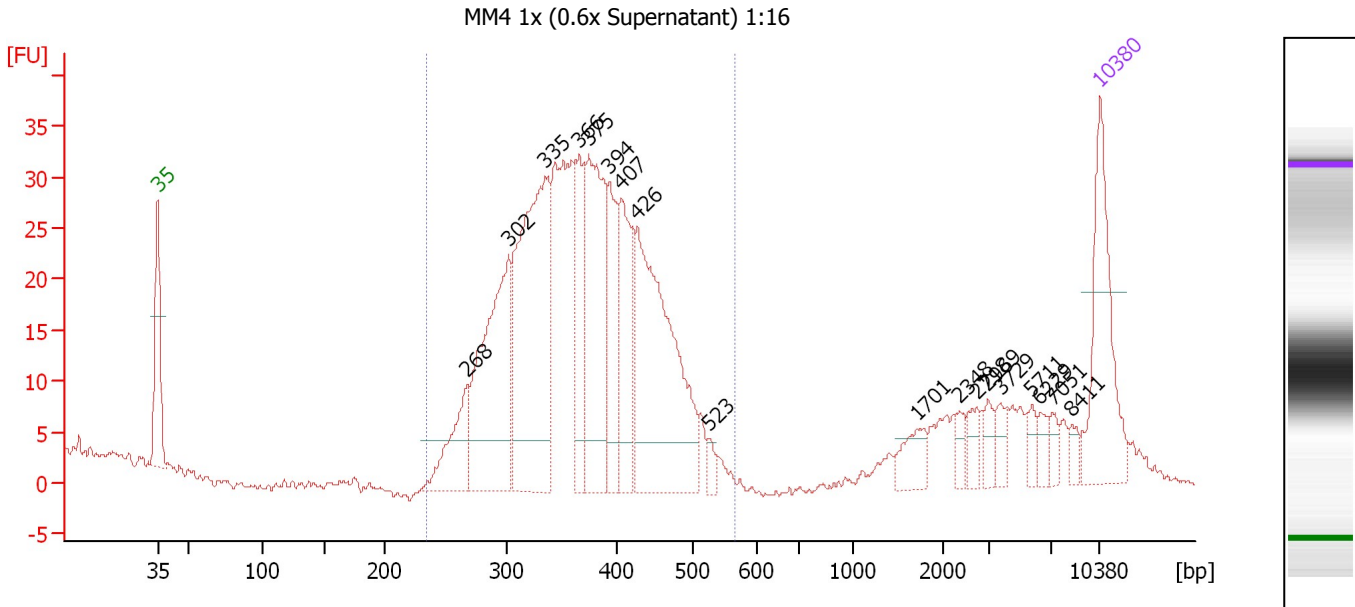
Region table for sample 9 : RT MR 113

From [bp]	To [bp]	Average Size [bp]	Molarity [pmol/l]	Conc. [pg/µl]	Corr. Area	% of Total	Size distribution in CV [%]	Color
366	418	384	3,874.3	980.55	553.6	37	2.5	Blue

Assay Class: High Sensitivity DNA Assay
 Data Path: C:\...ents and Settings\Bioanalyzer\2013-10-18\2013-10-18_007.xad

Created: 10/18/2013 5:13:57 PM
 Modified: 10/18/2013 5:57:11 PM

Electropherogram Summary Continued ...



Overall Results for sample 10 : MM4 1x (0.6x Supernatant) 1:16

Number of peaks found: 18 Corr. Area 1: 481.8
 Noise: 0.4

Peak table for sample 10 : MM4 1x (0.6x Supernatant) 1:16

Peak	Size [bp]	Conc. [pg/μl]	Molarity [pmol/l]	Observations
1	35	125.00	5,411.3	Lower Marker
2	268	60.45	342.0	
3	302	175.51	881.0	
4	335	247.80	1,119.6	
5	366	62.18	257.5	
6	375	146.14	590.5	
7	394	64.79	249.2	
8	407	74.17	276.2	
9	426	215.00	764.7	
10	523	8.15	23.6	
11	1,701	19.99	17.8	
12	2,348	7.37	4.8	
13	2,718	10.39	5.8	
14	2,969	9.59	4.9	
15	3,729	10.06	4.1	
16	5,711	7.77	2.1	
17	6,229	8.34	2.0	
18	7,051	7.44	1.6	
19	8,411	6.31	1.1	
20	10,380	75.00	10.9	Upper Marker

Region table for sample 10 : MM4 1x (0.6x Supernatant) 1:16

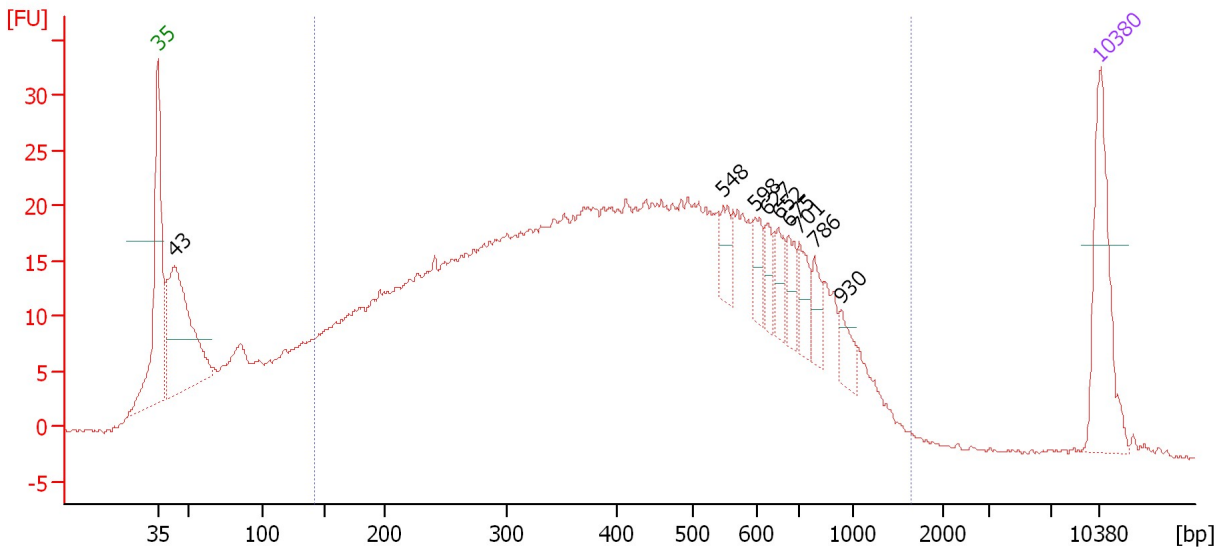
From [bp]	To [bp]	Average Size [bp]	Molarity [pmol/l]	Conc. [pg/μl]	Corr. Area	% of Total	Size distribution in CV [%]	Color
234	567	370	4,659.8	1,102.24	481.8	86	15.8	Blue

Assay Class: High Sensitivity DNA Assay
 Data Path: C:\...ents and Settings\Bioanalyzer\2013-10-18\2013-10-18_007.xad

Created: 10/18/2013 5:13:57 PM
 Modified: 10/18/2013 5:57:11 PM

Electropherogram Summary Continued ...

CR 1219 Soni-350bp 1:5 [6Cycles]



Overall Results for sample 11 : CR 1219 Soni-350bp 1:5

Number of peaks found: 9 Corr. Area 1: 930.2
 Noise: 0.2

Peak table for sample 11 : CR 1219 Soni-350bp 1:5

Peak	Size [bp]	Conc. [pg/μl]	Molarity [pmol/l]	Observations
1	35	125.00	5,411.3	Lower Marker
2	43	197.77	6,941.1	
3	548	22.30	61.6	
4	598	20.97	53.1	
5	627	17.59	42.5	
6	652	19.19	44.6	
7	675	19.44	43.6	
8	701	23.60	51.0	
9	786	18.81	36.3	
10	930	17.54	28.6	
11	10,380	75.00	10.9	Upper Marker

Region table for sample 11 : CR 1219 Soni-350bp 1:5

From [bp]	To [bp]	Average Size [bp]	Molarity [pmol/l]	Conc. [pg/μl]	Corr. Area	% of Total	Size distribution in CV [%]	Color
143	1,634	451	12,221.3	2,610.98	930.2	83	50.5	Blue

Assay Class: High Sensitivity DNA Assay
Data Path: C:\...ents and Settings\Bioanalyzer\2013-10-18\2013-10-18_007.xad

Created: 10/18/2013 5:13:57 PM
Modified: 10/18/2013 5:57:11 PM

Gel Image

