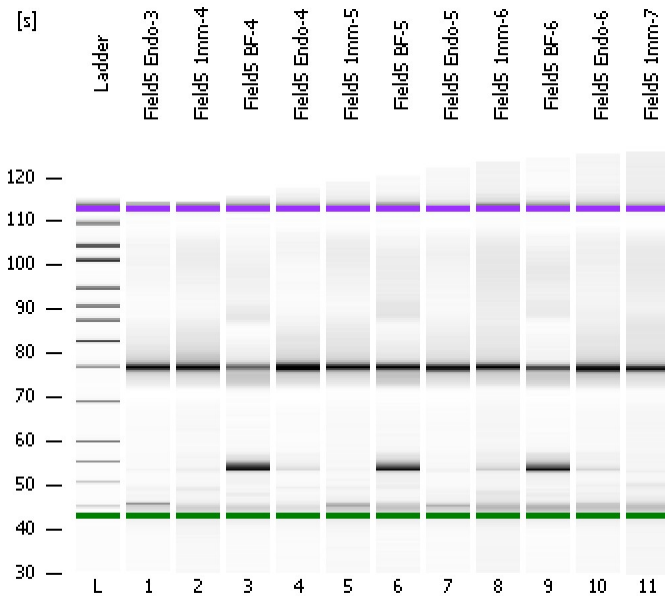


Assay Class: High Sensitivity DNA Assay  
Data Path: C:\...ents and Settings\Bioanalyzer\2013-10-21\2013-10-21\_002.xad

Created: 10/21/2013 10:22:18 AM  
Modified: 10/21/2013 11:57:01 AM

### Electrophoresis File Run Summary



#### Instrument Information:

Instrument Name: DE13701086      Firmware: C.01.069  
Serial#: DE13701086      Type: G2938B

#### Assay Information:

Assay Origin Path: C:\Program Files\Agilent\2100 bioanalyzer\2100 expert\assays\dsDNA\High Sensitivity DNA.xsy  
Assay Class: High Sensitivity DNA Assay  
Version: 1.03  
Assay Comments: Copyright © 2003-2010 Agilent Technologies

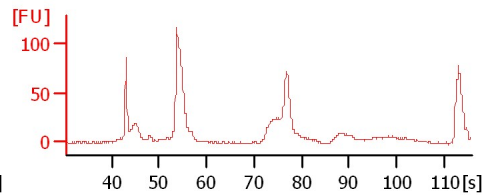
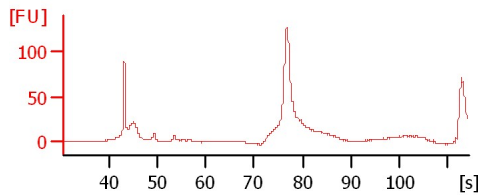
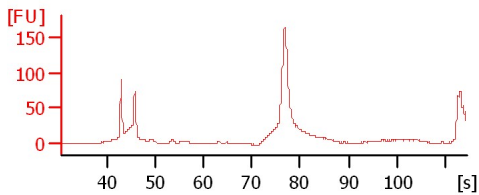
#### Chip Information:

Chip Lot #:   
Reagent Kit Lot #:   
Chip Comments:

Field5 Endo-3

Field5 1mm-4

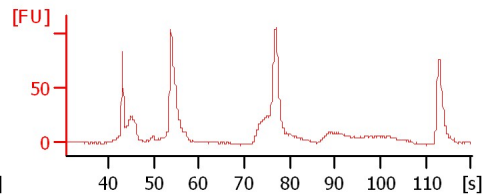
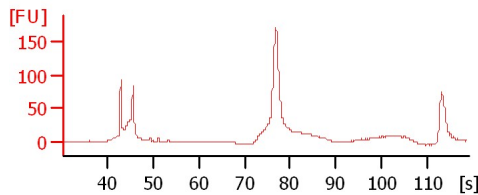
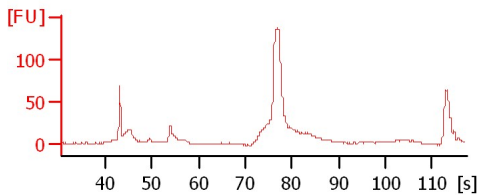
Field5 BF-4



Field5 Endo-4

Field5 1mm-5

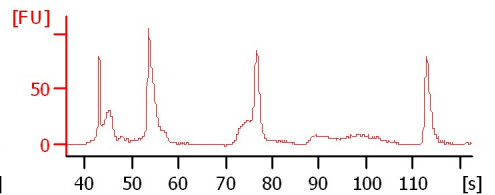
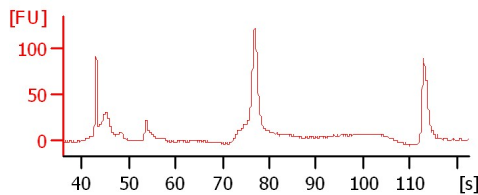
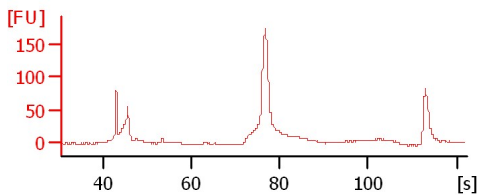
Field5 BF-5



Field5 Endo-5

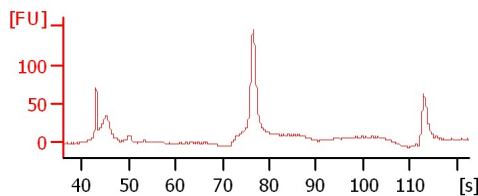
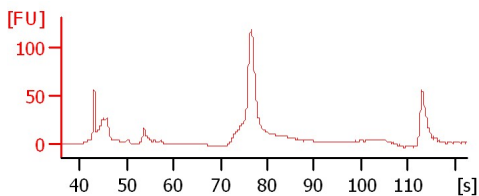
Field5 1mm-6

Field5 BF-6



Field5 Endo-6

Field5 1mm-7



Assay Class: High Sensitivity DNA Assay  
 Data Path: C:\...ents and Settings\Bioanalyzer\2013-10-21\2013-10-21\_002.xad

Created: 10/21/2013 10:22:18 AM  
 Modified: 10/21/2013 11:57:01 AM

**Electrophoresis File Run Summary (Chip Summary)**

Sample Name	Sample Comment	Rest. Digest	Status	Observation	Result Label	Result Color
Field5 Endo-3		<input type="checkbox"/>	✓			
Field5 1mm-4		<input type="checkbox"/>	✓			
Field5 BF-4		<input type="checkbox"/>	✓			
Field5 Endo-4		<input type="checkbox"/>	✓			
Field5 1mm-5		<input type="checkbox"/>	✓			
Field5 BF-5		<input type="checkbox"/>	✓			
Field5 Endo-5		<input type="checkbox"/>	✓			
Field5 1mm-6		<input type="checkbox"/>	✓			
Field5 BF-6		<input type="checkbox"/>	✓			
Field5 Endo-6		<input type="checkbox"/>	✓			
Field5 1mm-7		<input type="checkbox"/>	✓			
Ladder		<input type="checkbox"/>	✓			

**Chip Lot #**

**Reagent Kit Lot #**

**Chip Comments :**

Assay Class: High Sensitivity DNA Assay  
Data Path: C:\...ents and Settings\Bioanalyzer\2013-10-21\2013-10-21\_002.xad

Created: 10/21/2013 10:22:18 AM  
Modified: 10/21/2013 11:57:01 AM

**Electrophoresis Assay Details**

**General Analysis Settings**

Number of Available Sample and Ladder Wells (Max.) : 12  
Minimum Visible Range [s] : 32  
Maximum Visible Range [s] : 138  
Start Analysis Time Range [s] : 33  
End Analysis Time Range [s] : 137.5  
Ladder Concentration [pg/ $\mu$ l] : 1950  
Uses Standard Area for Ladder Fragments  
Lower Marker Concentration [pg/ $\mu$ l] : 125  
Upper Marker Concentration [pg/ $\mu$ l] : 75  
Used Upper Marker for Quantitation  
Standard Curve Fit is Point to Point  
Show Data Aligned to Lower and Upper Marker

**Integrator Settings**

Integration Start Time [s] : 33.05  
Integration End Time [s] : 137  
Slope Threshold : 0.8  
Height Threshold [FU] : 5  
Area Threshold : 0.1  
Width Threshold [s] : 0.6  
Baseline Plateau [s] : 0.5

**Filter Settings**

Filter Width [s] : 0.5  
Polynomial Order : 4

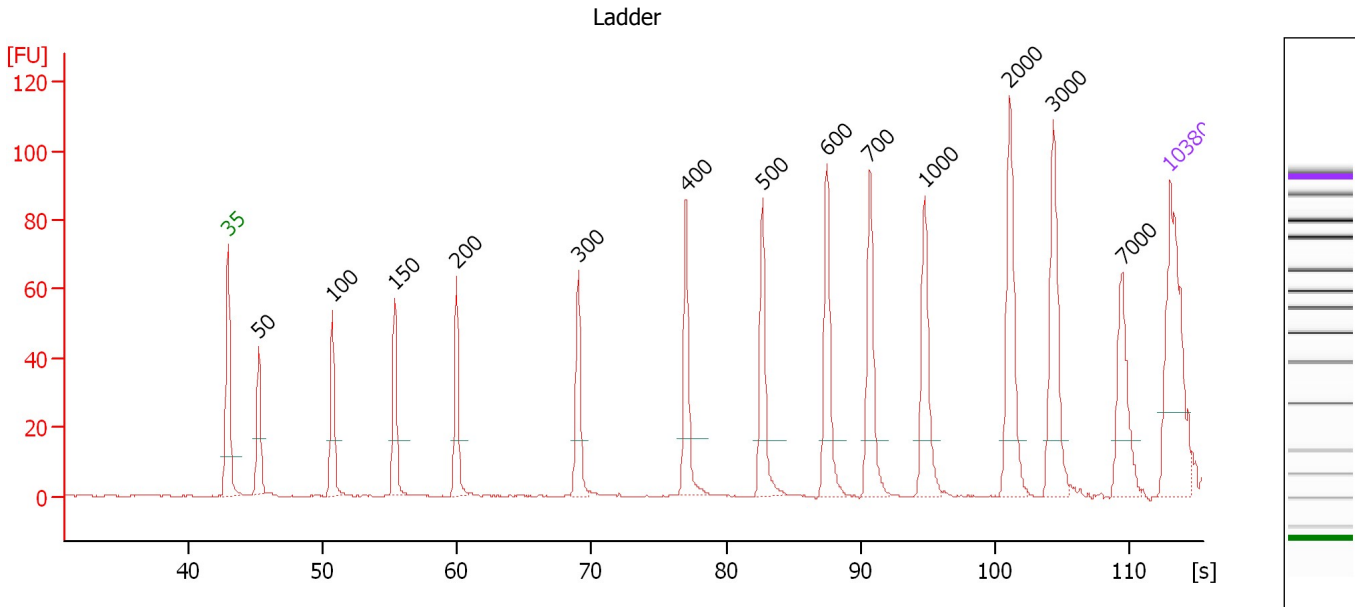
**Ladder**

Ladder Peak	Size	Area
1	35	160
2	50	210
3	100	208
4	150	221
5	200	242
6	300	270
7	400	305
8	500	306
9	600	336
10	700	321
11	1000	366
12	2000	413
13	3000	411
14	7000	400
15	10380	214

Assay Class: High Sensitivity DNA Assay  
 Data Path: C:\...ents and Settings\Bioanalyzer\2013-10-21\2013-10-21\_002.xad

Created: 10/21/2013 10:22:18 AM  
 Modified: 10/21/2013 11:57:01 AM

**Electropherogram Summary**



**Overall Results for Ladder**

Noise: 0.1

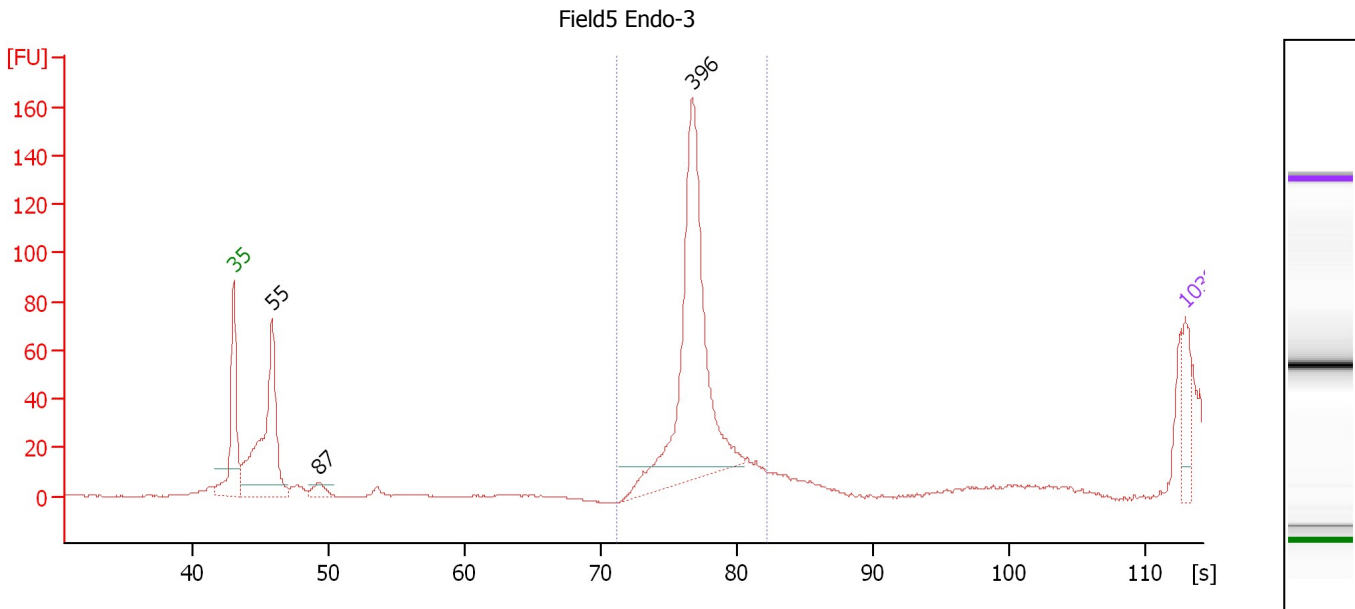
**Peak table for Ladder**

Peak	Size [bp]	Conc. [pg/µl]	Molarity [pmol/l]	Observations
1	35	125.00	5,411.3	Lower Marker
2	50	150.00	4,545.5	Ladder Peak
3	100	150.00	2,272.7	Ladder Peak
4	150	150.00	1,515.2	Ladder Peak
5	200	150.00	1,136.4	Ladder Peak
6	300	150.00	757.6	Ladder Peak
7	400	150.00	568.2	Ladder Peak
8	500	150.00	454.5	Ladder Peak
9	600	150.00	378.8	Ladder Peak
10	700	150.00	324.7	Ladder Peak
11	1,000	150.00	227.3	Ladder Peak
12	2,000	150.00	113.6	Ladder Peak
13	3,000	150.00	75.8	Ladder Peak
14	7,000	150.00	32.5	Ladder Peak
15	10,380	75.00	10.9	Upper Marker

Assay Class: High Sensitivity DNA Assay  
 Data Path: C:\...ents and Settings\Bioanalyzer\2013-10-21\2013-10-21\_002.xad

Created: 10/21/2013 10:22:18 AM  
 Modified: 10/21/2013 11:57:01 AM

**Electropherogram Summary Continued ...**



**Overall Results for sample 1 : Field5 Endo-3**

Number of peaks found: 3                      Corr. Area 1: 271.4  
 Noise: 0.2

**Peak table for sample 1 : Field5 Endo-3**

Peak	Size [bp]	Conc. [pg/μl]	Molarity [pmol/l]	Observations
1	35	125.00	5,411.3	Lower Marker
2	55	748.85	20,551.8	
3	87	49.95	873.6	
4	396	1,064.35	4,070.5	
5	10,380	75.00	10.9	Upper Marker

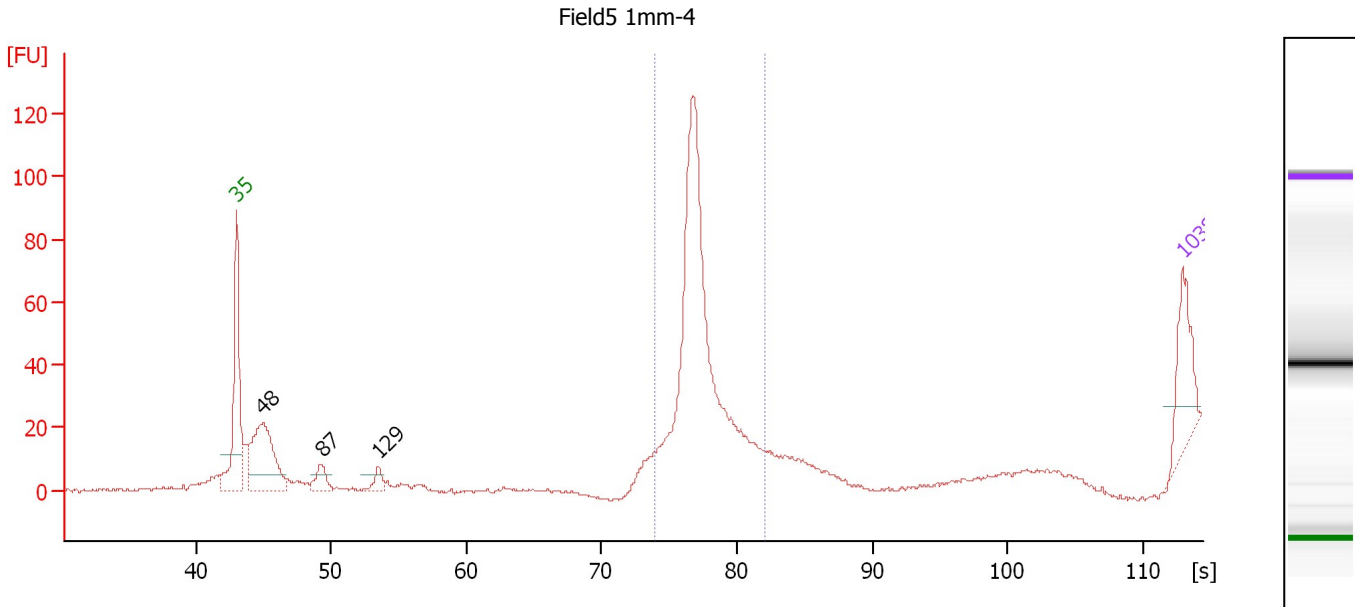
**Region table for sample 1 : Field5 Endo-3**

From [s]	To [s]	Average Size [bp]	Molarity [pmol/l]	Conc. [pg/μl]	Corr. Area % of Total	Size distribution in CV [%]	Color
71.18	82.30	399	2,602.7	684.62	271.4    63	2.2	Blue

Assay Class: High Sensitivity DNA Assay  
 Data Path: C:\...ents and Settings\Bioanalyzer\2013-10-21\2013-10-21\_002.xad

Created: 10/21/2013 10:22:18 AM  
 Modified: 10/21/2013 11:57:01 AM

**Electropherogram Summary Continued ...**



**Overall Results for sample 2 : Field5 1mm-4**

Number of peaks found: 3                      Corr. Area 1: 223.8  
 Noise: 0.5

**Peak table for sample 2 : Field5 1mm-4**

Peak	Size [bp]	Conc. [pg/μl]	Molarity [pmol/l]	Observations
1	35	125.00	5,411.3	Lower Marker
2	48	243.39	7,709.0	
3	87	41.70	729.5	
4	129	23.89	280.1	
5	10,380	75.00	10.9	Upper Marker

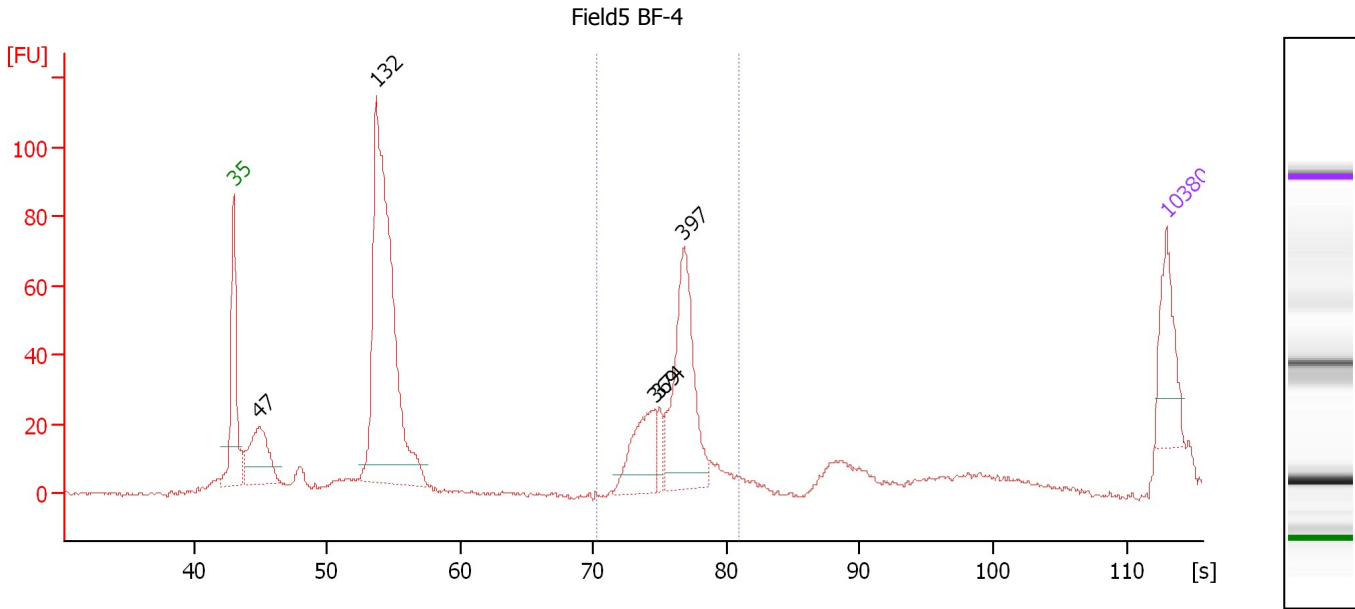
**Region table for sample 2 : Field5 1mm-4**

From [s]	To [s]	Average Size [bp]	Molarity [pmol/l]	Conc. [pg/μl]	Corr. Area % of Total	Size distribution in CV [%]	Color
73.90	82.01	400	1,418.2	374.19	223.8 77	2.8	Blue

Assay Class: High Sensitivity DNA Assay  
 Data Path: C:\...ents and Settings\Bioanalyzer\2013-10-21\2013-10-21\_002.xad

Created: 10/21/2013 10:22:18 AM  
 Modified: 10/21/2013 11:57:01 AM

**Electropherogram Summary Continued ...**



**Overall Results for sample 3 : Field5 BF-4**

Number of peaks found: 5                      Corr. Area 1: 240.4  
 Noise: 0.5

**Peak table for sample 3 : Field5 BF-4**

Peak	Size [bp]	Conc. [pg/μl]	Molarity [pmol/l]	Observations
1	35	125.00	5,411.3	Lower Marker
2	47	157.75	5,032.9	
3	132	792.15	9,081.8	
4	369	112.76	462.4	
5	374	27.06	109.6	
6	397	250.15	955.6	
7	10,380	75.00	10.9	Upper Marker

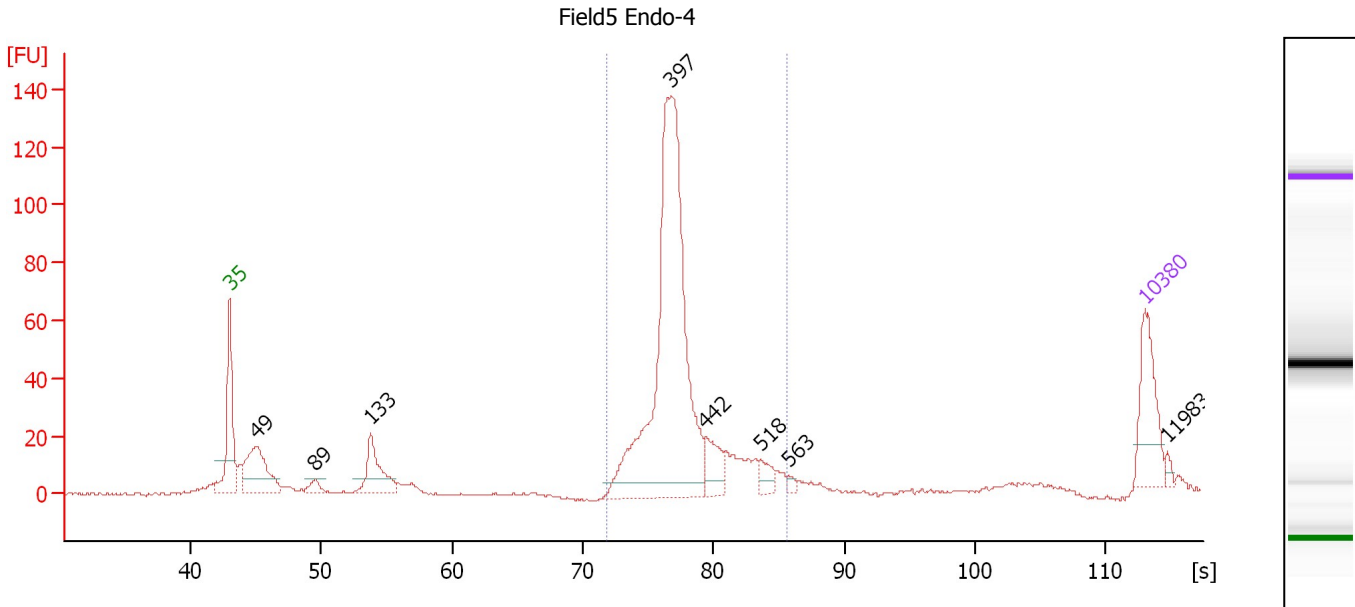
**Region table for sample 3 : Field5 BF-4**

From [s]	To [s]	Average Size [bp]	Molarity [pmol/l]	Conc. [pg/μl]	Corr. Area % of Total	Size distribution in CV [%]	Color
70.33	80.86	389	1,451.6	371.72	240.4 31	5.8	Blue

Assay Class: High Sensitivity DNA Assay  
 Data Path: C:\...ents and Settings\Bioanalyzer\2013-10-21\2013-10-21\_002.xad

Created: 10/21/2013 10:22:18 AM  
 Modified: 10/21/2013 11:57:01 AM

**Electropherogram Summary Continued ...**



**Overall Results for sample 4 : Field5 Endo-4**

Number of peaks found: 8                      Corr. Area 1: 554.0  
 Noise: 0.4

**Peak table for sample 4 : Field5 Endo-4**

Peak	Size [bp]	Conc. [pg/μl]	Molarity [pmol/l]	Observations
1	35	125.00	5,411.3	Lower Marker
2	49	150.61	4,700.9	
3	89	18.02	307.1	
4	133	94.86	1,080.1	
5	397	674.08	2,572.1	
6	442	49.61	170.2	
7	518	22.88	66.9	
8	563	5.91	15.9	
9	10,380	75.00	10.9	Upper Marker
10	11,983	0.00	0.0	

**Region table for sample 4 : Field5 Endo-4**

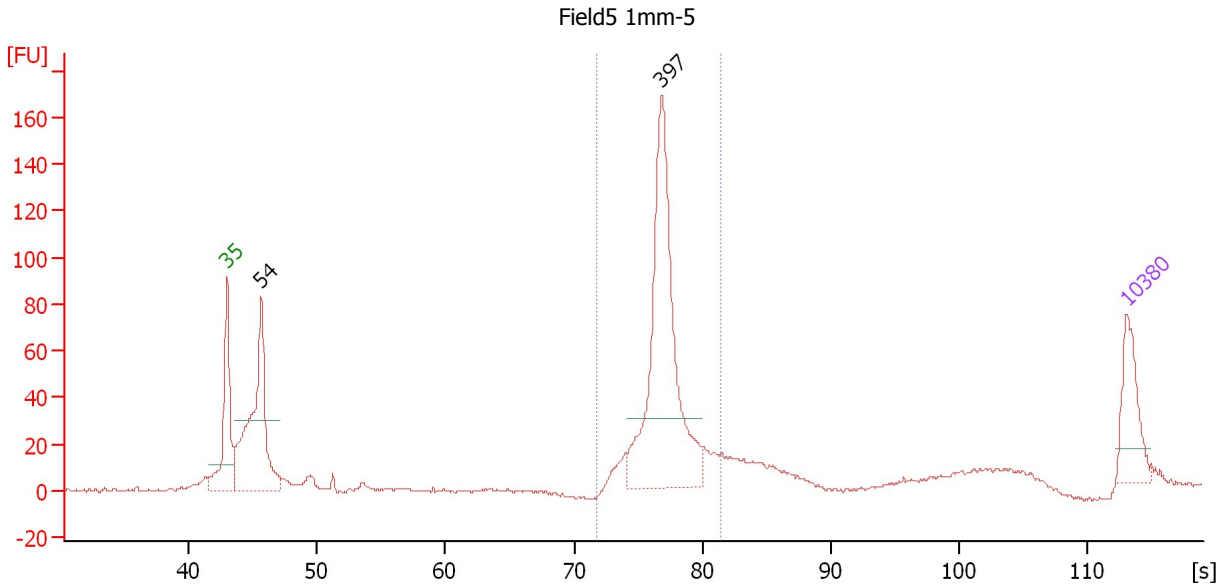
From [s]	To [s]	Average Size [bp]	Molarity [pmol/l]	Conc. [pg/μl]	Corr. Area % of Total	Size distribution in CV [%]	Color
71.77	85.60	412	2,872.8	772.89	554.0 74	9.9	Blue



Assay Class: High Sensitivity DNA Assay  
 Data Path: C:\...ents and Settings\Bioanalyzer\2013-10-21\2013-10-21\_002.xad

Created: 10/21/2013 10:22:18 AM  
 Modified: 10/21/2013 11:57:01 AM

**Electropherogram Summary Continued ...**



**Setpoint Deviations for sample 5 : Field5 1mm-5**

Height Threshold [FU] : 30

**Overall Results for sample 5 : Field5 1mm-5**

Number of peaks found: 2                      Corr. Area 1: 497.7  
 Noise: 0.5

**Peak table for sample 5 : Field5 1mm-5**

Peak	Size [bp]	Conc. [pg/µl]	Molarity [pmol/l]	Observations
1	35	125.00	5,411.3	Lower Marker
2	54	404.38	11,418.8	
3	397	524.01	1,999.4	
4	10,380	75.00	10.9	Upper Marker

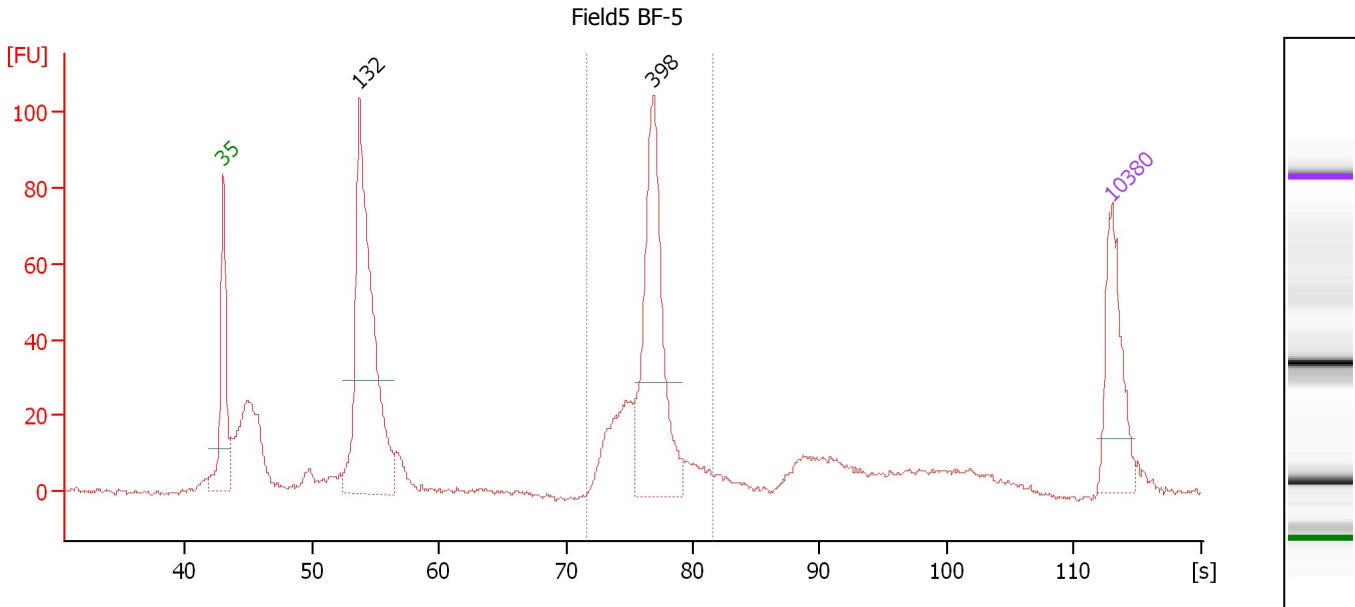
**Region table for sample 5 : Field5 1mm-5**

From [s]	To [s]	Average Size [bp]	Molarity [pmol/l]	Conc. [pg/µl]	Corr. Area % of Total	Size distribution in CV [%]	Color
71.84	81.50	403	2,195.2	582.22	497.7 54	6.0	Blue

Assay Class: High Sensitivity DNA Assay  
 Data Path: C:\...ents and Settings\Bioanalyzer\2013-10-21\2013-10-21\_002.xad

Created: 10/21/2013 10:22:18 AM  
 Modified: 10/21/2013 11:57:01 AM

**Electropherogram Summary Continued ...**



**Setpoint Deviations for sample 6 : Field5 BF-5**

Height Threshold [FU] : 30

**Overall Results for sample 6 : Field5 BF-5**

Number of peaks found: 2                      Corr. Area 1: 326.6  
 Noise: 0.5

**Peak table for sample 6 : Field5 BF-5**

Peak	Size [bp]	Conc. [pg/µl]	Molarity [pmol/l]	Observations
1	35	125.00	5,411.3	Lower Marker
2	132	461.09	5,291.6	
3	398	253.04	962.7	
4	10,380	75.00	10.9	Upper Marker

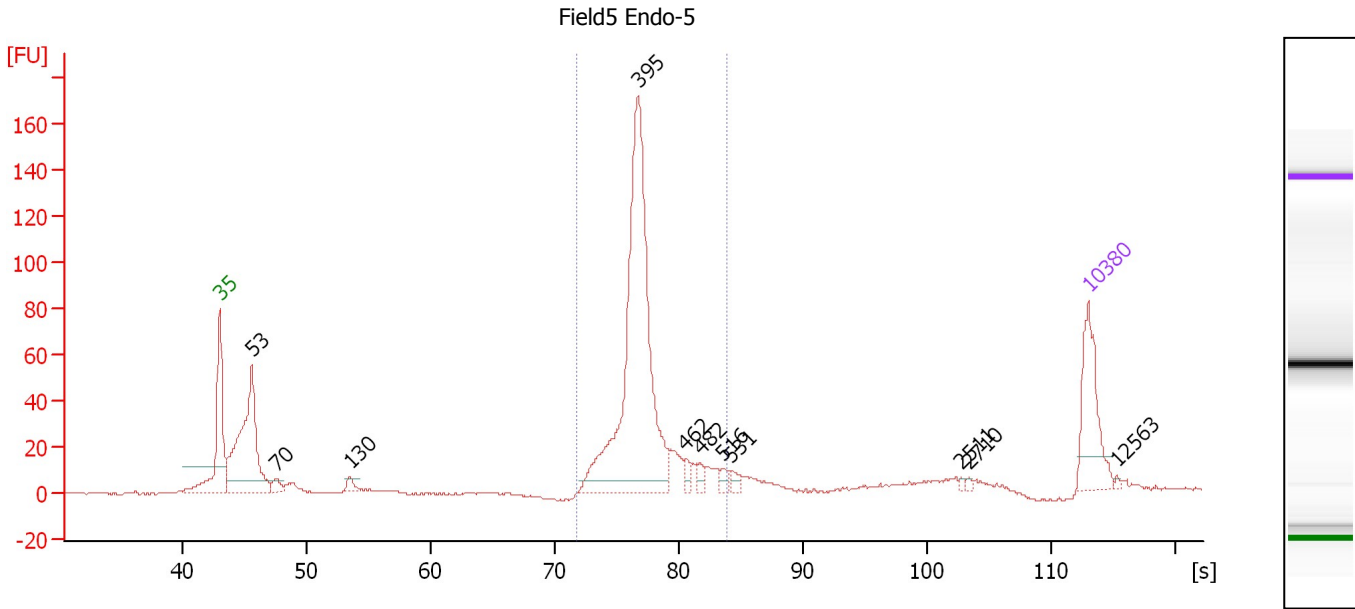
**Region table for sample 6 : Field5 BF-5**

From [s]	To [s]	Average Size [bp]	Molarity [pmol/l]	Conc. [pg/µl]	Corr. Area % of Total	Size distribution in CV [%]	Color	
71.65	81.65	395	1,337.9	347.89	326.6	35	6.3	Blue

Assay Class: High Sensitivity DNA Assay  
 Data Path: C:\...ents and Settings\Bioanalyzer\2013-10-21\2013-10-21\_002.xad

Created: 10/21/2013 10:22:18 AM  
 Modified: 10/21/2013 11:57:01 AM

**Electropherogram Summary Continued ...**



**Overall Results for sample 7 : Field5 Endo-5**

Number of peaks found: 11      Corr. Area 1: 553.7  
 Noise: 0.3

**Peak table for sample 7 : Field5 Endo-5**

Peak	Size [bp]	Conc. [pg/µl]	Molarity [pmol/l]	Observations
1	35	125.00	5,411.3	Lower Marker
2	53	285.43	8,229.0	
3	70	15.38	331.1	
4	130	11.54	135.0	
5	395	520.90	1,995.6	
6	462	11.37	37.3	
7	482	9.58	30.1	
8	516	9.83	28.9	
9	531	8.91	25.4	
10	2,511	2.25	1.4	
11	2,710	2.13	1.2	
12	10,380	75.00	10.9	Upper Marker
13	12,563	0.00	0.0	

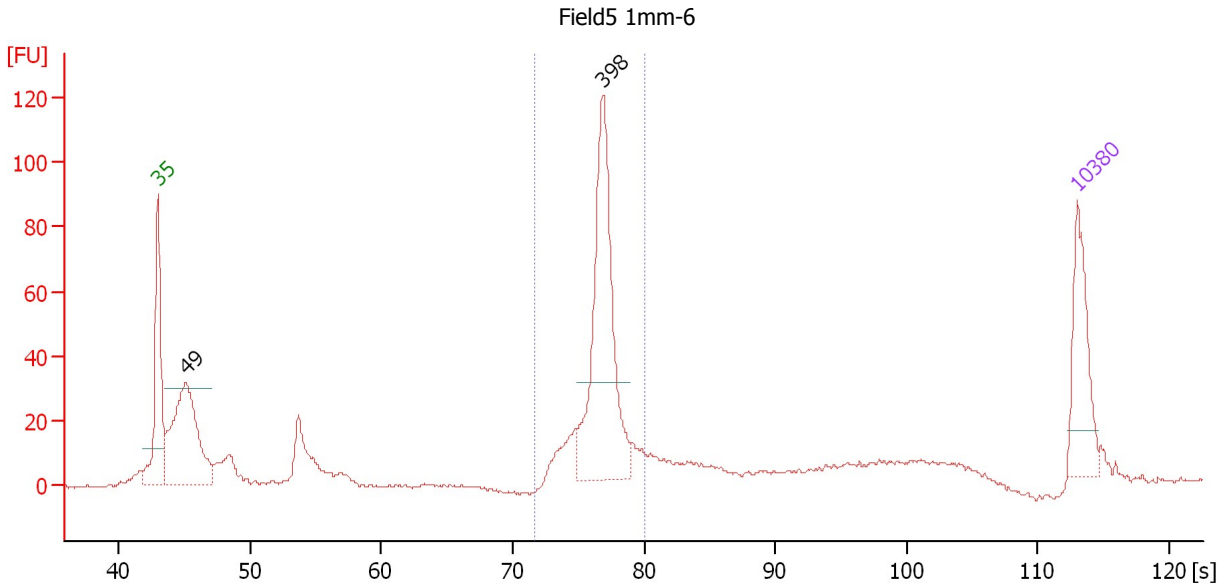
**Region table for sample 7 : Field5 Endo-5**

From [s]	To [s]	Average Size [bp]	Molarity [pmol/l]	Conc. [pg/µl]	Corr. Area % of Total	Size distribution in CV [%]	Color
71.70	83.88	405	2,237.8	594.36	553.7 65	8.2	Blue

Assay Class: High Sensitivity DNA Assay  
 Data Path: C:\...ents and Settings\Bioanalyzer\2013-10-21\2013-10-21\_002.xad

Created: 10/21/2013 10:22:18 AM  
 Modified: 10/21/2013 11:57:01 AM

**Electropherogram Summary Continued ...**



**Setpoint Deviations for sample 8 : Field5 1mm-6**

Height Threshold [FU] : 30

**Overall Results for sample 8 : Field5 1mm-6**

Number of peaks found: 2                      Corr. Area 1: 320.6  
 Noise: 0.5

**Peak table for sample 8 : Field5 1mm-6**

Peak	Size [bp]	Conc. [pg/μl]	Molarity [pmol/l]	Observations
1	35	125.00	5,411.3	Lower Marker
2	49	262.39	8,127.1	
3	398	288.30	1,096.9	
4	10,380	75.00	10.9	Upper Marker

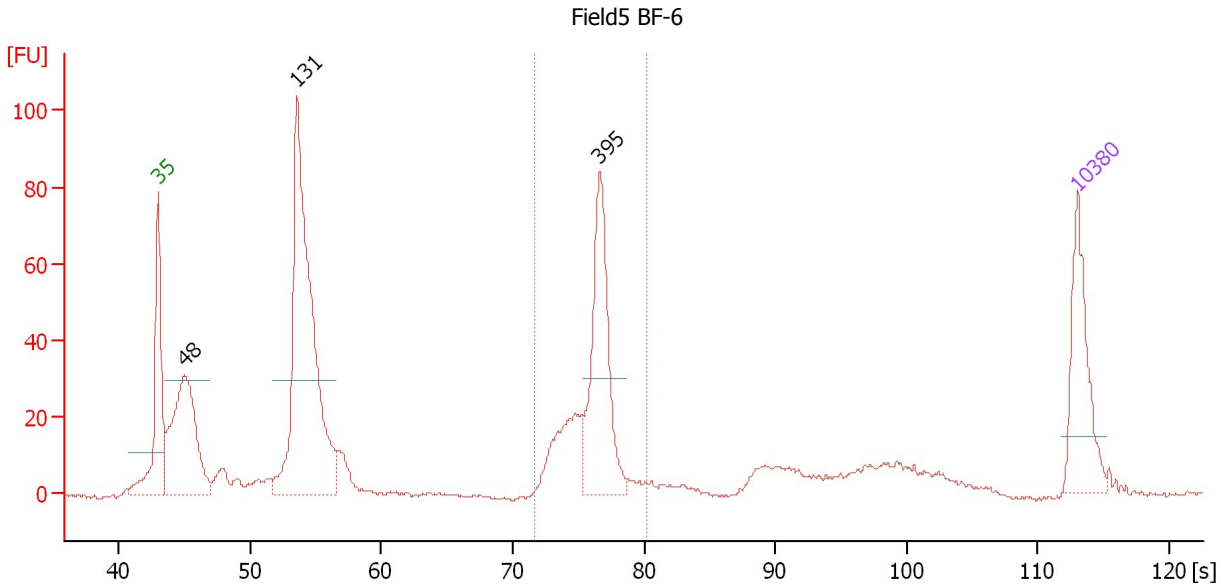
**Region table for sample 8 : Field5 1mm-6**

From [s]	To [s]	Average Size [bp]	Molarity [pmol/l]	Conc. [pg/μl]	Corr. Area % of Total	Size distribution in CV [%]	Color
71.71	80.10	397	1,356.7	355.15	320.6 43	4.9	Blue

Assay Class: High Sensitivity DNA Assay  
 Data Path: C:\...ents and Settings\Bioanalyzer\2013-10-21\2013-10-21\_002.xad

Created: 10/21/2013 10:22:18 AM  
 Modified: 10/21/2013 11:57:01 AM

**Electropherogram Summary Continued ...**



**Setpoint Deviations for sample 9 : Field5 BF-6**

Height Threshold [FU] : 30

**Overall Results for sample 9 : Field5 BF-6**

Number of peaks found: 3                      Corr. Area 1: 231.1  
 Noise: 0.4

**Peak table for sample 9 : Field5 BF-6**

Peak	Size [bp]	Conc. [pg/μl]	Molarity [pmol/l]	Observations
1	35	125.00	5,411.3	Lower Marker
2	48	248.36	7,815.8	
3	131	505.94	5,863.3	
4	395	180.82	693.9	
5	10,380	75.00	10.9	Upper Marker

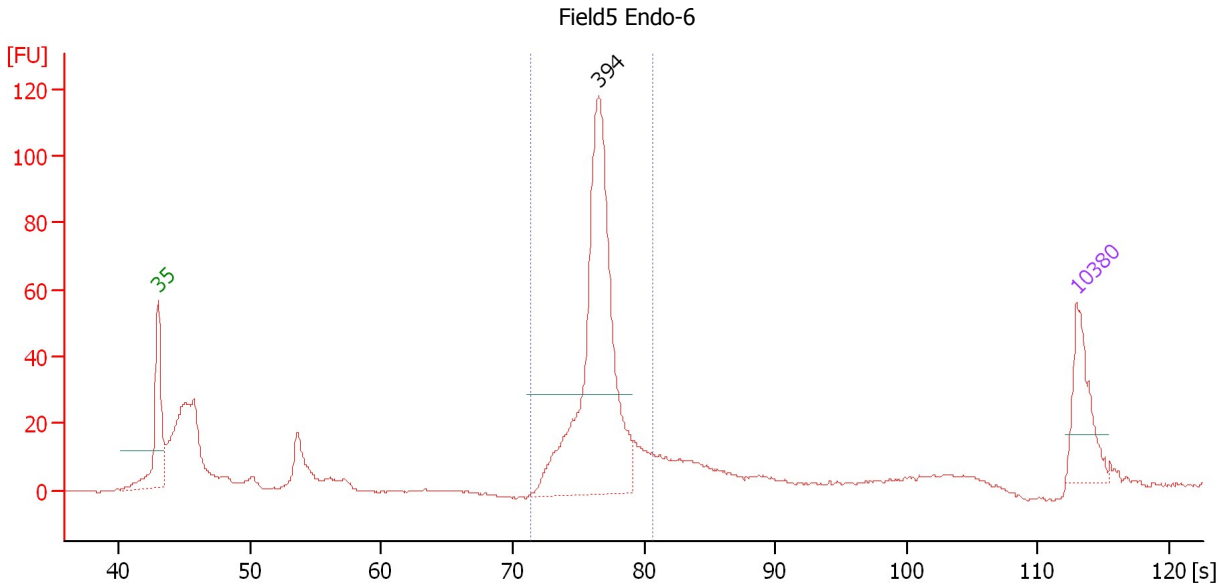
**Region table for sample 9 : Field5 BF-6**

From [s]	To [s]	Average Size [bp]	Molarity [pmol/l]	Conc. [pg/μl]	Corr. Area % of Total	Size distribution in CV [%]	Color
71.75	80.21	387	1,019.1	260.16	231.1 27	5.1	Blue

Assay Class: High Sensitivity DNA Assay  
 Data Path: C:\...ents and Settings\Bioanalyzer\2013-10-21\2013-10-21\_002.xad

Created: 10/21/2013 10:22:18 AM  
 Modified: 10/21/2013 11:57:01 AM

**Electropherogram Summary Continued ...**



**Setpoint Deviations for sample 10 : Field5 Endo-6**

Height Threshold [FU] : 30

**Overall Results for sample 10 : Field5 Endo-6**

Number of peaks found: 1                      Corr. Area 1: 378.4  
 Noise: 0.3

**Peak table for sample 10 : Field5 Endo-6**

Peak	Size [bp]	Conc. [pg/μl]	Molarity [pmol/l]	Observations
1	35	125.00	5,411.3	Lower Marker
2	394	559.67	2,153.5	
3	10,380	75.00	10.9	Upper Marker

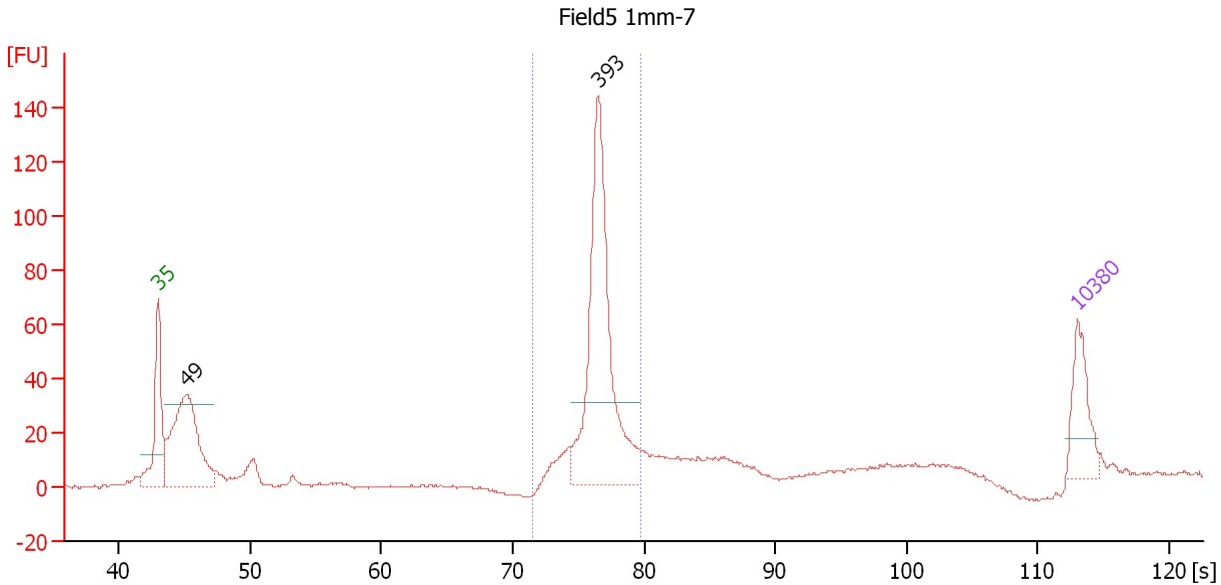
**Region table for sample 10 : Field5 Endo-6**

From [s]	To [s]	Average Size [bp]	Molarity [pmol/l]	Conc. [pg/μl]	Corr. Area % of Total	Size distribution in CV [%]	Color
71.42	80.66	396	2,168.6	565.35	378.4	54	5.6

Assay Class: High Sensitivity DNA Assay  
 Data Path: C:\...ents and Settings\Bioanalyzer\2013-10-21\2013-10-21\_002.xad

Created: 10/21/2013 10:22:18 AM  
 Modified: 10/21/2013 11:57:01 AM

**Electropherogram Summary Continued ...**



**Setpoint Deviations for sample 11 : Field5 1mm-7**

Height Threshold [FU] : 30

**Overall Results for sample 11 : Field5 1mm-7**

Number of peaks found: 2                      Corr. Area 1: 349.5  
 Noise: 0.5

**Peak table for sample 11 : Field5 1mm-7**

Peak	Size [bp]	Conc. [pg/µl]	Molarity [pmol/l]	Observations
1	35	125.00	5,411.3	Lower Marker
2	49	382.69	11,740.7	
3	393	501.62	1,932.7	
4	10,380	75.00	10.9	Upper Marker

**Region table for sample 11 : Field5 1mm-7**

From [s]	To [s]	Average Size [bp]	Molarity [pmol/l]	Conc. [pg/µl]	Corr. Area % of Total	Size distribution in CV [%]	Color
71.58	79.80	395	2,041.9	531.83	349.5 47	4.5	Blue

Assay Class: High Sensitivity DNA Assay  
Data Path: C:\...ents and Settings\Bioanalyzer\2013-10-21\2013-10-21\_002.xad

Created: 10/21/2013 10:22:18 AM  
Modified: 10/21/2013 11:57:01 AM

**Gel Image**

