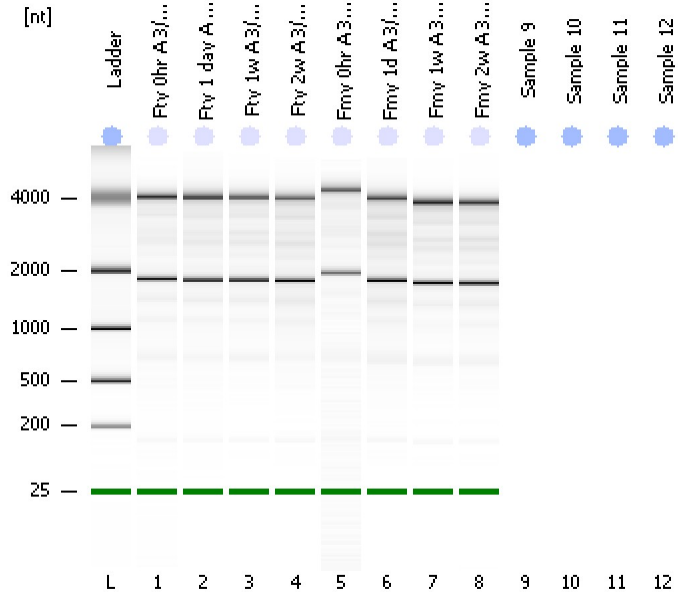


Assay Class: Eukaryote Total RNA Nano
Data Path: C:\...ents and Settings\Bioanalyzer\2013-10-21\2013-10-21_004.xad

Created: 10/21/2013 12:29:22 PM
Modified: 10/21/2013 12:54:40 PM

Electrophoresis File Run Summary



Instrument Information:

Instrument Name: DE13701086 Firmware: C.01.069
Serial#: DE13701086 Type: G2938B

Assay Information:

Assay Origin Path: C:\Program Files\Agilent\2100 bioanalyzer\2100 expert\assays\RNA\Eukaryote Total RNA Nano Series II.xsy

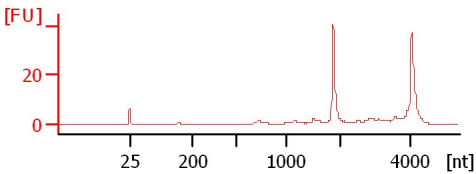
Assay Class: Eukaryote Total RNA Nano
Version: 2.6
Assay Comments: Total RNA Analysis ng sensitivity (Eukaryote)

© Copyright 2003 - 2009 Agilent Technologies, Inc.

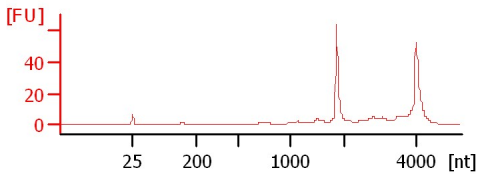
Chip Information:

Chip Lot #:
Reagent Kit Lot #:
Chip Comments:

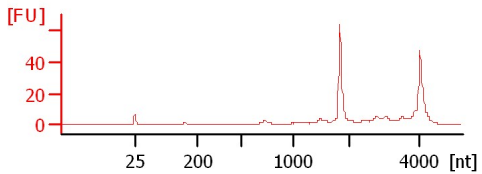
Fty 0hr A 3/4/12
RIN: 5.80



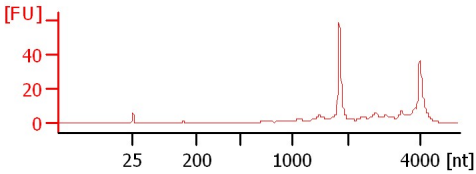
Fty 1 day A 3/5/12
RIN: 6



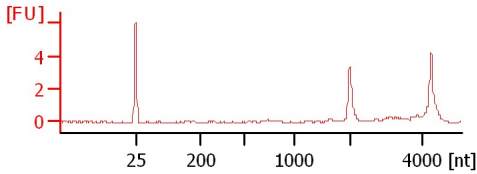
Fty 1w A 3/11/12
RIN: 6



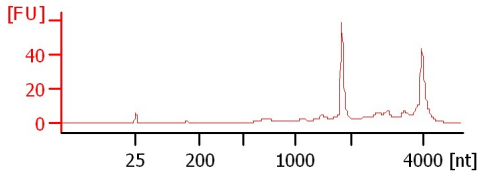
Fty 2w A 3/19/12
RIN: 5.90



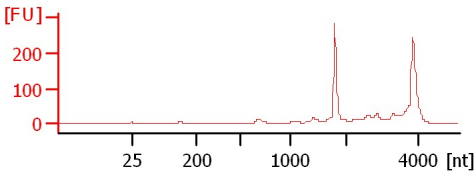
Fmy 0hr A 3/4/12
RIN: 7.50



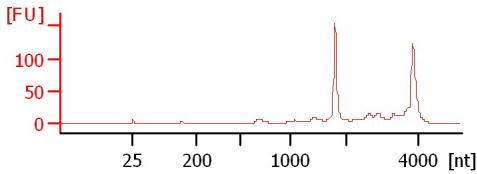
Fmy 1d A 3/5/12
RIN: 5.90



Fmy 1w A 3/11/12
RIN: 2.40



Fmy 2w A 3/19/12
RIN: 2.50



Assay Class: Eukaryote Total RNA Nano
Data Path: C:\...ents and Settings\Bioanalyzer\2013-10-21\2013-10-21_004.xad

Created: 10/21/2013 12:29:22 PM
Modified: 10/21/2013 12:54:40 PM

Electrophoresis File Run Summary (Chip Summary)

Sample Name	Sample Comment	Status	Result Label	Result Color
Fty 0hr A 3/4/12		✓	RIN: 5.80	
Fty 1 day A 3/5/12		✓	RIN:6	
Fty 1w A 3/11/12		✓	RIN:6	
Fty 2w A 3/19/12		✓	RIN: 5.90	
Fmy 0hr A 3/4/12		✓	RIN: 7.50	
Fmy 1d A 3/5/12		✓	RIN: 5.90	
Fmy 1w A 3/11/12		✓	RIN: 2.40	
Fmy 2w A 3/19/12		✓	RIN: 2.50	
Sample 9				
Sample 10				
Sample 11				
Sample 12				
Ladder		✓	All Other Samples	

Chip Lot #

Reagent Kit Lot #

Chip Comments :

Assay Class: Eukaryote Total RNA Nano
Data Path: C:\...ents and Settings\Bioanalyzer\2013-10-21\2013-10-21_004.xad

Created: 10/21/2013 12:29:22 PM
Modified: 10/21/2013 12:54:40 PM

Electrophoresis Assay Details

General Analysis Settings

Number of Available Sample and Ladder Wells (Max.) : 13
Minimum Visible Range [s] : 17
Maximum Visible Range [s] : 70
Start Analysis Time Range [s] : 19
End Analysis Time Range [s] : 69
Ladder Concentration [ng/μl] : 150
Lower Marker Concentration [ng/μl] : 0
Upper Marker Concentration [ng/μl] : 0
Used Lower Marker for Quantitation
Standard Curve Fit is Logarithmic
Show Data Aligned to Lower Marker

Integrator Settings

Integration Start Time [s] : 19
Integration End Time [s] : 69
Slope Threshold : 0.6
Height Threshold [FU] : 0.5
Area Threshold : 0.2
Width Threshold [s] : 0.5
Baseline Plateau [s] : 6

Filter Settings

Filter Width [s] : 0.5
Polynomial Order : 4

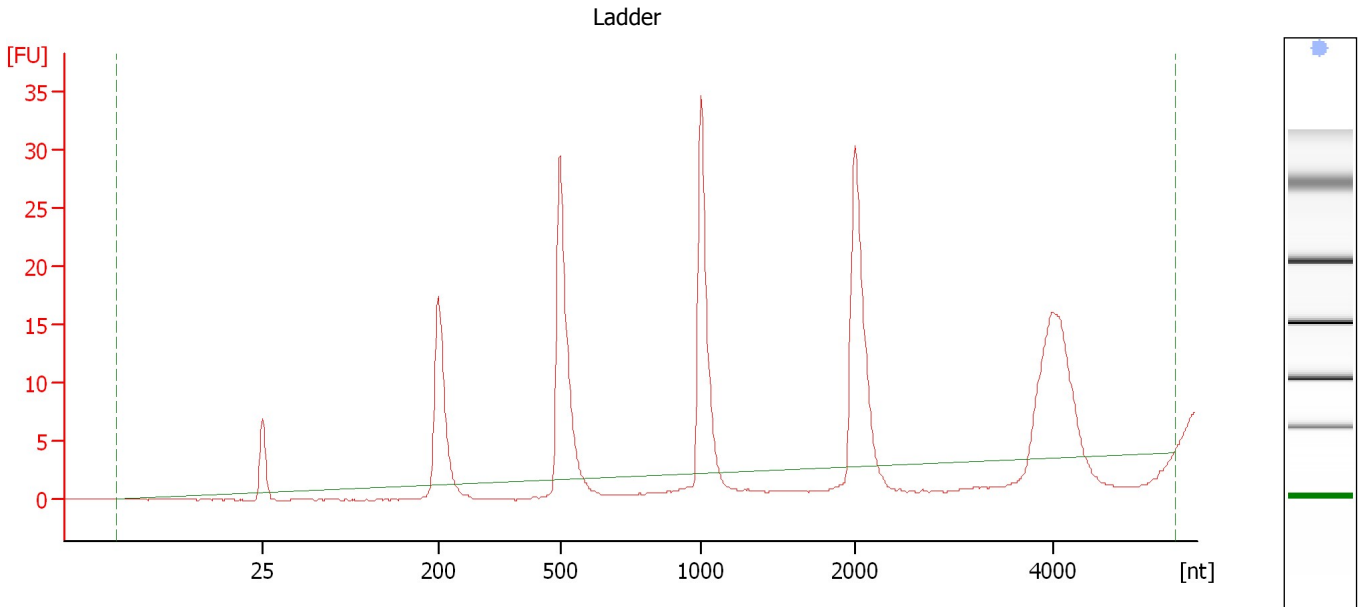
Ladder

Ladder Peak	Size
1	25
2	200
3	500
4	1000
5	2000
6	4000

Assay Class: Eukaryote Total RNA Nano
Data Path: C:\...ents and Settings\Bioanalyzer\2013-10-21\2013-10-21_004.xad

Created: 10/21/2013 12:29:22 PM
Modified: 10/21/2013 12:54:40 PM

Electropherogram Summary



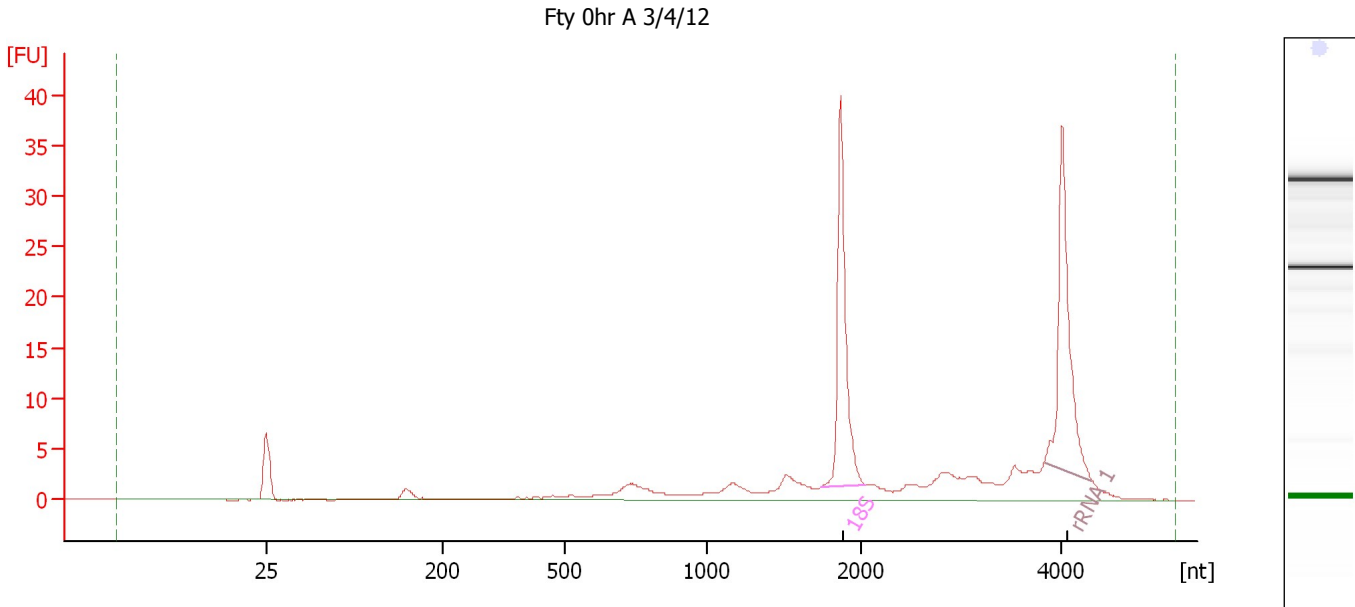
Overall Results for Ladder

RNA Area:	151.2	Result Flagging Color:	
RNA Concentration:	150 ng/ μ l	Result Flagging Label:	All Other Samples

Assay Class: Eukaryote Total RNA Nano
 Data Path: C:\...ents and Settings\Bioanalyzer\2013-10-21\2013-10-21_004.xad

Created: 10/21/2013 12:29:22 PM
 Modified: 10/21/2013 12:54:40 PM

Electropherogram Summary Continued ...



Overall Results for sample 1 : Fty Ohr A 3/4/12

RNA Area:	137.2	RNA Integrity Number (RIN):	5.8 (B.02.08, Anomaly Threshold(s) manually adapted)
RNA Concentration:	136 ng/μl		
rRNA Ratio [28s / 18s]:	0.0	Result Flagging Color:	
		Result Flagging Label:	RIN: 5.80

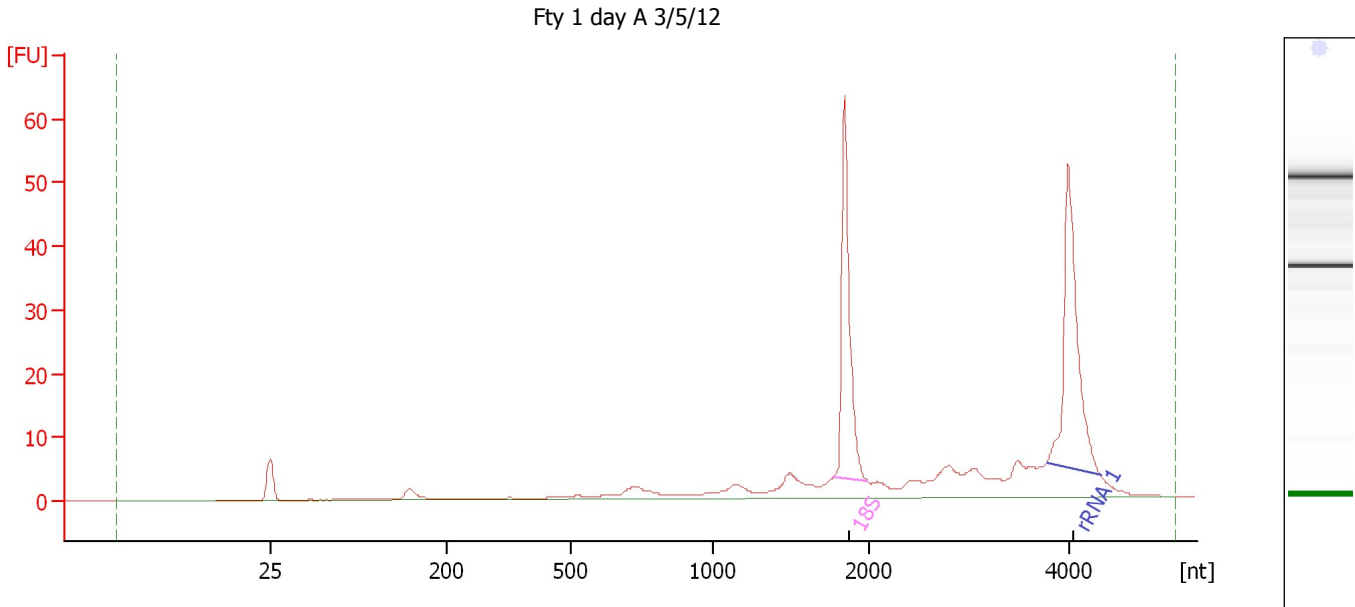
Fragment table for sample 1 : Fty Ohr A 3/4/12

Name	Start Size [nt]	End Size [nt]	Area	% of total Area
18S	1,740	2,029	31.3	22.8
rRNA 1	3,833	4,312	30.6	22.3

Assay Class: Eukaryote Total RNA Nano
Data Path: C:\...ents and Settings\Bioanalyzer\2013-10-21\2013-10-21_004.xad

Created: 10/21/2013 12:29:22 PM
Modified: 10/21/2013 12:54:40 PM

Electropherogram Summary Continued ...



Overall Results for sample 2 : Fty 1 day A 3/5/12

RNA Area: 213.2 RNA Integrity Number (RIN): 6 (B.02.08, Anomaly Threshold(s) manually adapted)
RNA Concentration: 211 ng/μl
rRNA Ratio [28s / 18s]: 0.0
Result Flagging Color:
Result Flagging Label: RIN:6

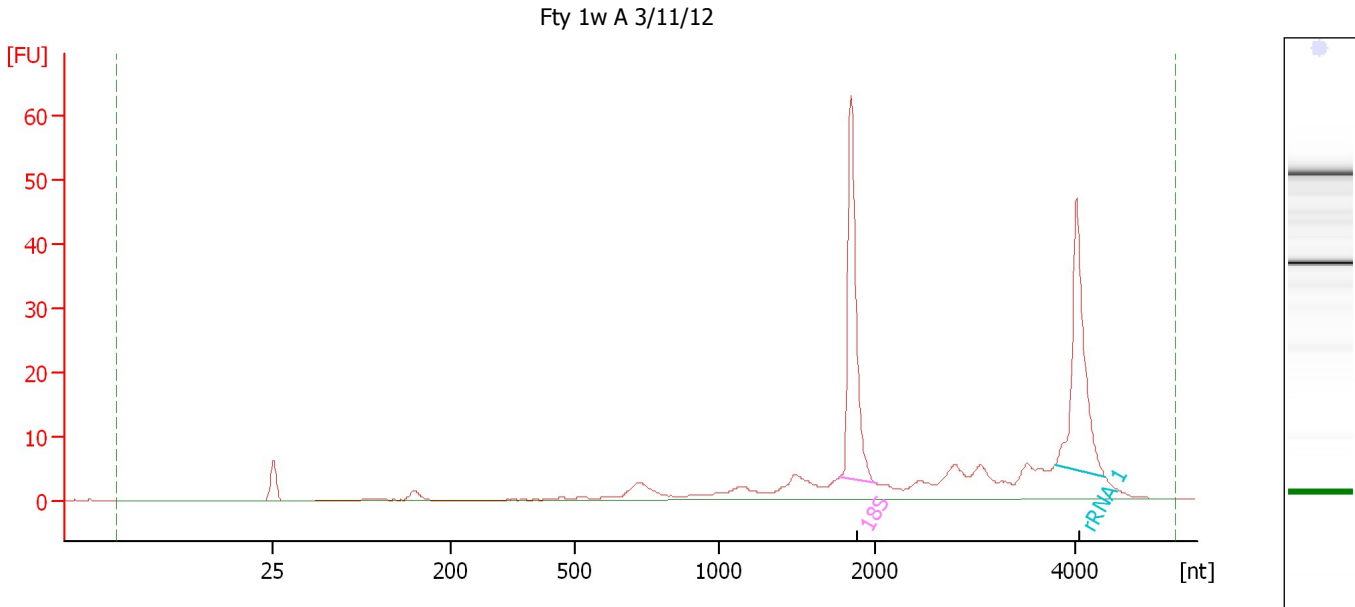
Fragment table for sample 2 : Fty 1 day A 3/5/12

Name	Start Size [nt]	End Size [nt]	Area	% of total Area
18S	1,772	1,990	47.3	22.2
rRNA 1	3,779	4,318	51.7	24.3

Assay Class: Eukaryote Total RNA Nano
 Data Path: C:\...ents and Settings\Bioanalyzer\2013-10-21\2013-10-21_004.xad

Created: 10/21/2013 12:29:22 PM
 Modified: 10/21/2013 12:54:40 PM

Electropherogram Summary Continued ...



Overall Results for sample 3 : Fty 1w A 3/11/12

RNA Area:	203.0	RNA Integrity Number (RIN):	6 (B.02.08, Anomaly Threshold(s) manually adapted)
RNA Concentration:	201 ng/μl	Result Flagging Color:	
rRNA Ratio [28s / 18s]:	0.0	Result Flagging Label:	RIN:6

Fragment table for sample 3 : Fty 1w A 3/11/12

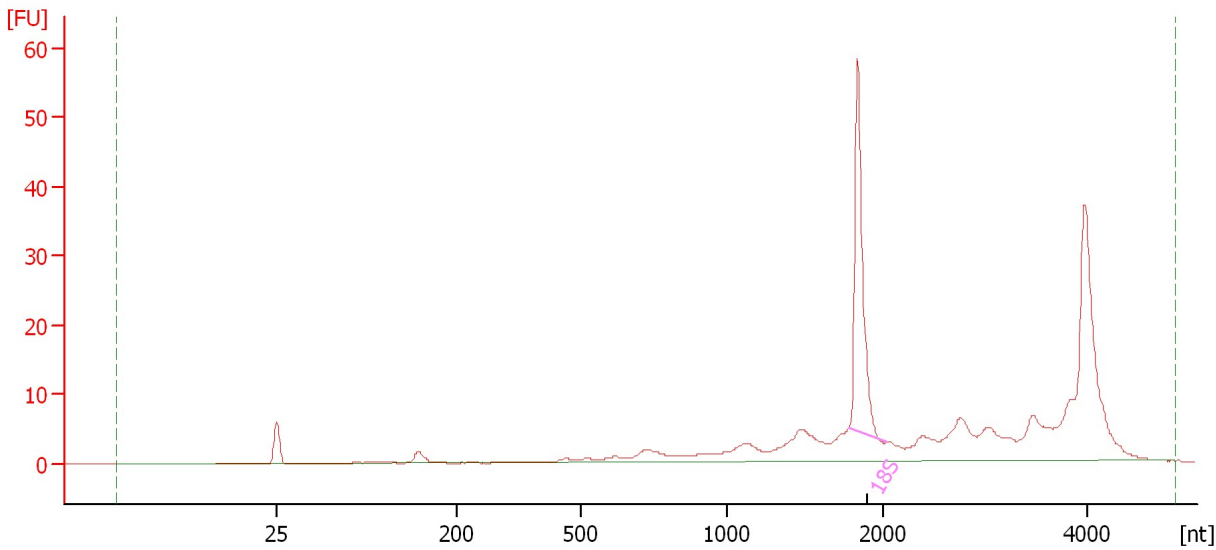
Name	Start Size [nt]	End Size [nt]	Area	% of total Area
18S	1,774	2,010	47.0	23.1
rRNA 1	3,794	4,291	42.9	21.1

Assay Class: Eukaryote Total RNA Nano
Data Path: C:\...ents and Settings\Bioanalyzer\2013-10-21\2013-10-21_004.xad

Created: 10/21/2013 12:29:22 PM
Modified: 10/21/2013 12:54:40 PM

Electropherogram Summary Continued ...

Fty 2w A 3/19/12



Overall Results for sample 4 : Fty 2w A 3/19/12

RNA Area:	212.8	RNA Integrity Number (RIN):	5.9 (B.02.08, Anomaly Threshold(s) manually adapted)
RNA Concentration:	211 ng/μl		
rRNA Ratio [28s / 18s]:	0.0	Result Flagging Color:	
		Result Flagging Label:	RIN: 5.90

Fragment table for sample 4 : Fty 2w A 3/19/12

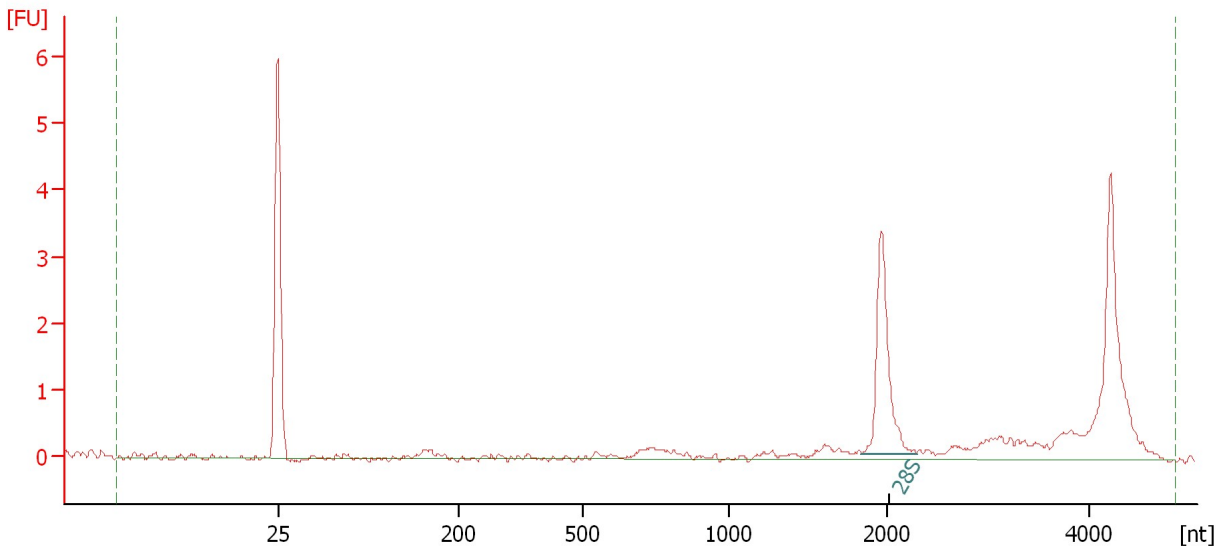
Name	Start Size [nt]	End Size [nt]	Area	% of total Area
18S	1,779	2,040	42.3	19.9

Assay Class: Eukaryote Total RNA Nano
Data Path: C:\...ents and Settings\Bioanalyzer\2013-10-21\2013-10-21_004.xad

Created: 10/21/2013 12:29:22 PM
Modified: 10/21/2013 12:54:40 PM

Electropherogram Summary Continued ...

Fmy 0hr A 3/4/12



Overall Results for sample 5 : Fmy 0hr A 3/4/12

RNA Area:	16.3	RNA Integrity Number (RIN):	7.5 (B.02.08, Anomaly Threshold(s) manually adapted)
RNA Concentration:	16 ng/μl		
rRNA Ratio [28s / 18s]:	0.0	Result Flagging Color:	
		Result Flagging Label:	RIN: 7.50

Fragment table for sample 5 : Fmy 0hr A 3/4/12

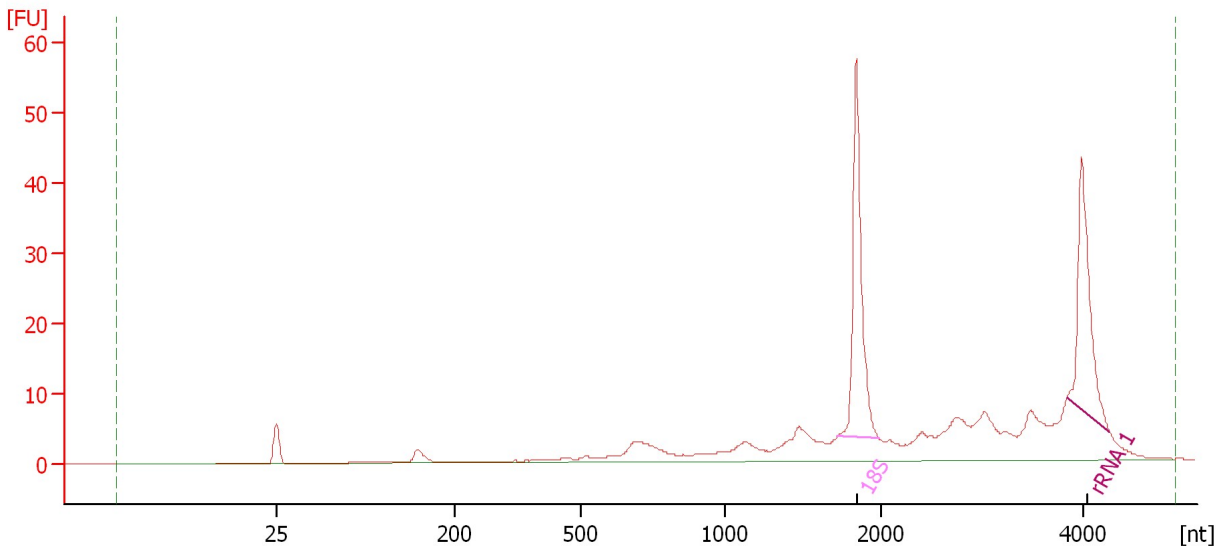
Name	Start Size [nt]	End Size [nt]	Area	% of total Area
28S	1,846	2,297	3.7	22.8

Assay Class: Eukaryote Total RNA Nano
Data Path: C:\...ents and Settings\Bioanalyzer\2013-10-21\2013-10-21_004.xad

Created: 10/21/2013 12:29:22 PM
Modified: 10/21/2013 12:54:40 PM

Electropherogram Summary Continued ...

Fmy 1d A 3/5/12



Overall Results for sample 6 : Fmy 1d A 3/5/12

RNA Area: 227.1 RNA Integrity Number (RIN): 5.9 (B.02.08, Anomaly Threshold(s) manually adapted)
RNA Concentration: 225 ng/μl
rRNA Ratio [28s / 18s]: 0.0
Result Flagging Color:
Result Flagging Label: RIN: 5.90

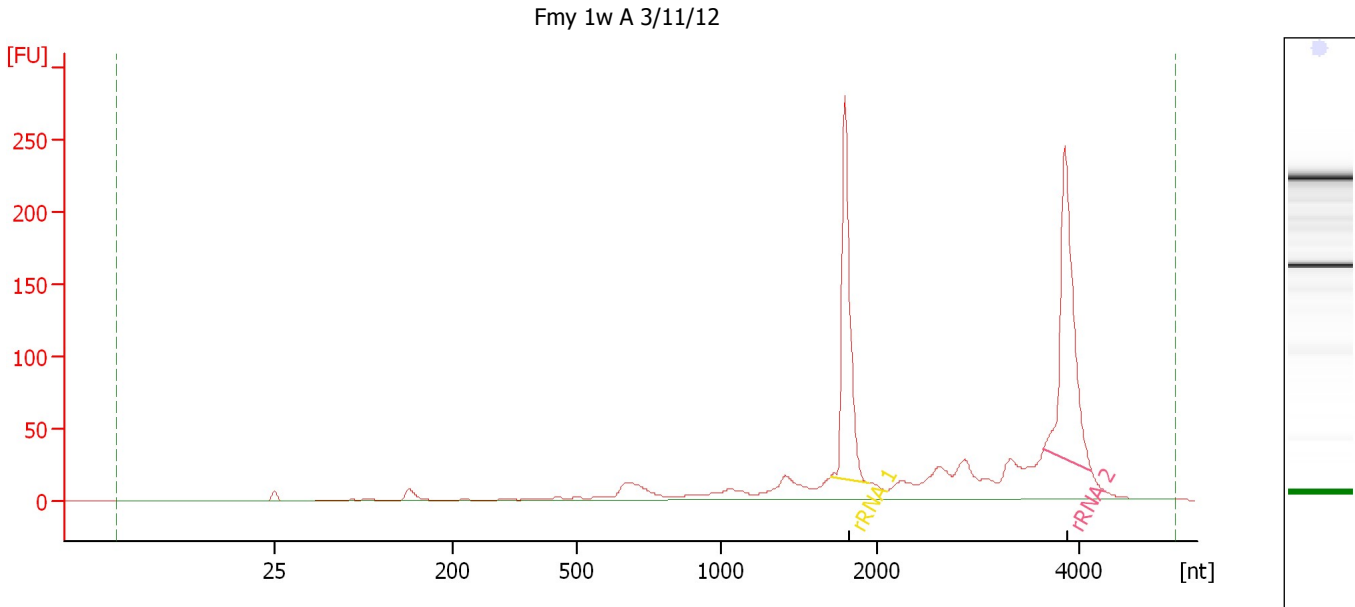
Fragment table for sample 6 : Fmy 1d A 3/5/12

Name	Start Size [nt]	End Size [nt]	Area	% of total Area
18S	1,719	1,979	45.2	19.9
rRNA 1	3,831	4,253	34.3	15.1

Assay Class: Eukaryote Total RNA Nano
Data Path: C:\...ents and Settings\Bioanalyzer\2013-10-21\2013-10-21_004.xad

Created: 10/21/2013 12:29:22 PM
Modified: 10/21/2013 12:54:40 PM

Electropherogram Summary Continued ...



Overall Results for sample 7 : Fmy 1w A 3/11/12

RNA Area:	1,042.2	RNA Integrity Number (RIN):	2.4 (B.02.08)
RNA Concentration:	1,034 ng/μl	Result Flagging Color:	
rRNA Ratio [28s / 18s]:	0.0	Result Flagging Label:	RIN: 2.40

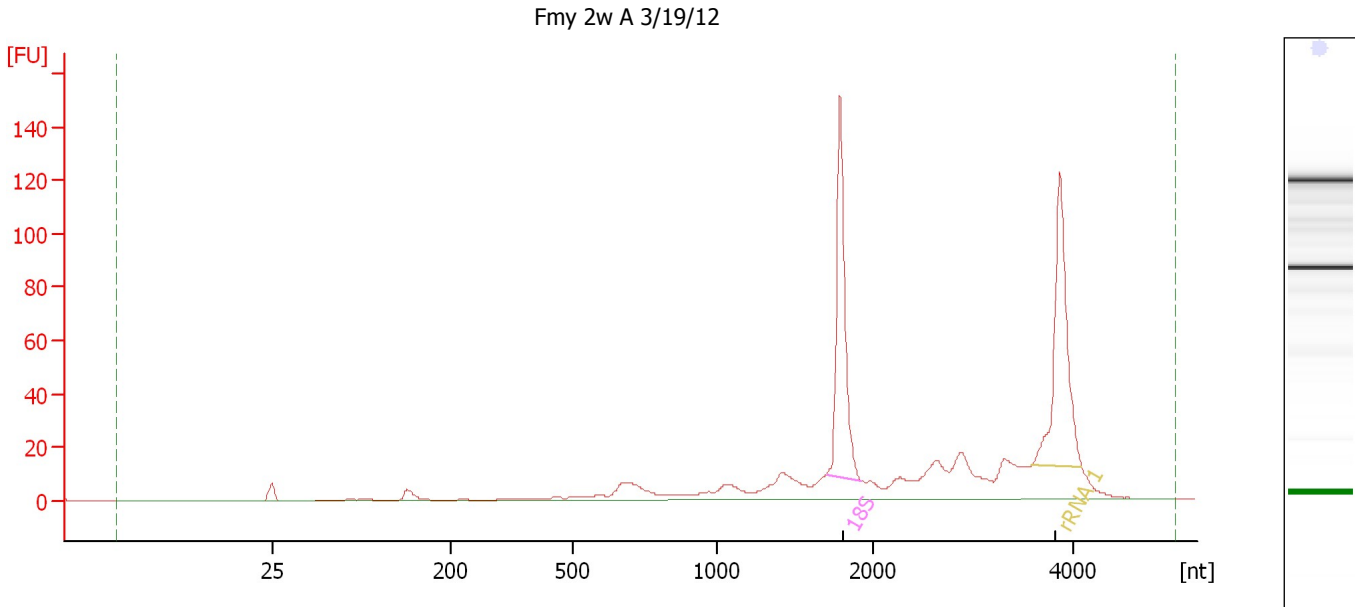
Fragment table for sample 7 : Fmy 1w A 3/11/12

Name	Start Size [nt]	End Size [nt]	Area	% of total Area
rRNA 1	1,703	1,951	215.6	20.7
rRNA 2	3,647	4,123	235.9	22.6

Assay Class: Eukaryote Total RNA Nano
 Data Path: C:\...ents and Settings\Bioanalyzer\2013-10-21\2013-10-21_004.xad

Created: 10/21/2013 12:29:22 PM
 Modified: 10/21/2013 12:54:40 PM

Electropherogram Summary Continued ...



Overall Results for sample 8 : Fmy 2w A 3/19/12

RNA Area:	570.6	RNA Integrity Number (RIN):	2.5 (B.02.08)
RNA Concentration:	566 ng/μl	Result Flagging Color:	
rRNA Ratio [28s / 18s]:	0.0	Result Flagging Label:	RIN: 2.50

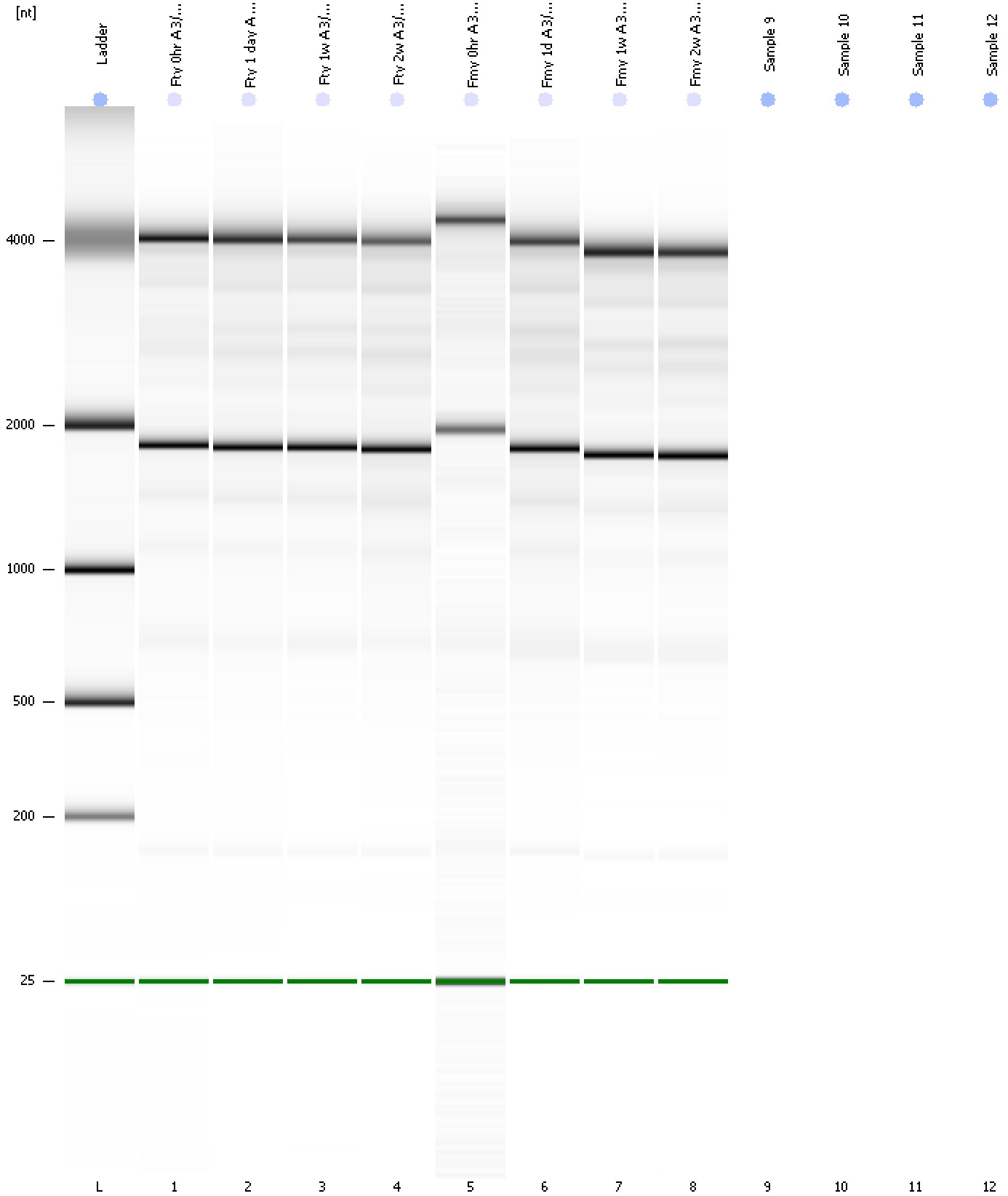
Fragment table for sample 8 : Fmy 2w A 3/19/12

Name	Start Size [nt]	End Size [nt]	Area	% of total Area
18S	1,701	1,920	119.6	21.0
rRNA 1	3,583	4,084	116.8	20.5

Assay Class: Eukaryote Total RNA Nano
Data Path: C:\...ents and Settings\Bioanalyzer\2013-10-21\2013-10-21_004.xad

Created: 10/21/2013 12:29:22 PM
Modified: 10/21/2013 12:54:40 PM

Gel Image



Assay Class: Eukaryote Total RNA Nano
Data Path: C:\...ents and Settings\Bioanalyzer\2013-10-21\2013-10-21_004.xad

Created: 10/21/2013 12:29:22 PM
Modified: 10/21/2013 12:54:40 PM

Invalid Samples

Sample 9 has not been run, no results available.

Sample 10 has not been run, no results available.

Sample 11 has not been run, no results available.

Sample 12 has not been run, no results available.