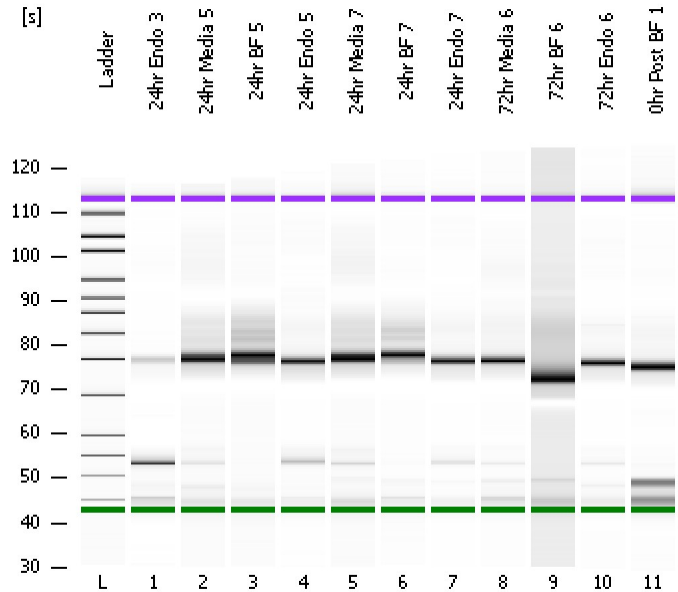


Assay Class: High Sensitivity DNA Assay  
Data Path: C:\...ents and Settings\Bioanalyzer\2013-10-21\2013-10-21\_005.xad

Created: 10/21/2013 1:25:10 PM  
Modified: 10/21/2013 2:51:15 PM

**Electrophoresis File Run Summary**



Instrument Information:

Instrument Name: DE13701086      Firmware: C.01.069  
Serial#: DE13701086      Type: G2938B

Assay Information:

Assay Origin Path: C:\Program Files\Agilent\2100 bioanalyzer\2100 expert\assays\dsDNA\High Sensitivity DNA.xsy  
Assay Class: High Sensitivity DNA Assay  
Version: 1.03  
Assay Comments: Copyright © 2003-2010 Agilent Technologies

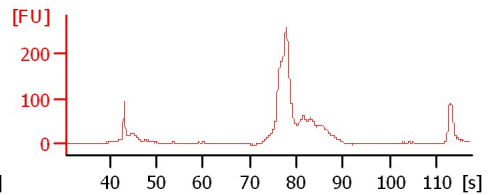
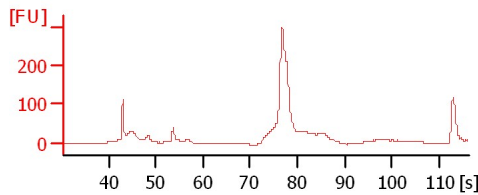
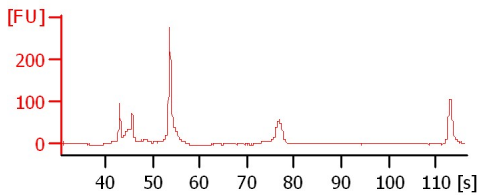
Chip Information:

Chip Lot #:   
Reagent Kit Lot #:   
Chip Comments:

**24hr Endo 3**

**24hr Media 5**

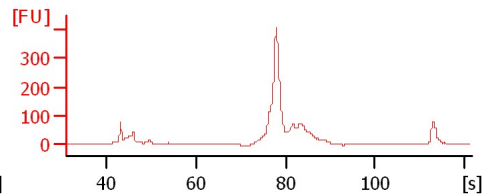
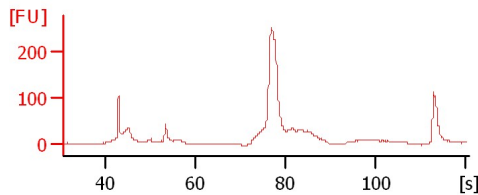
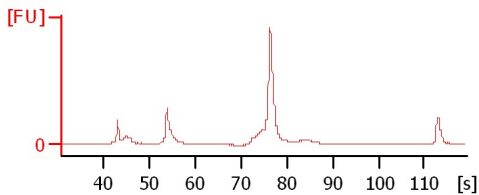
**24hr BF 5**



**24hr Endo 5**

**24hr Media 7**

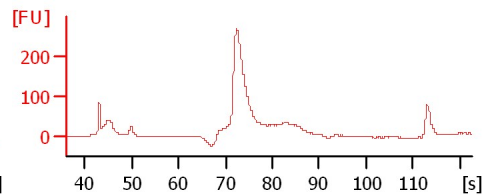
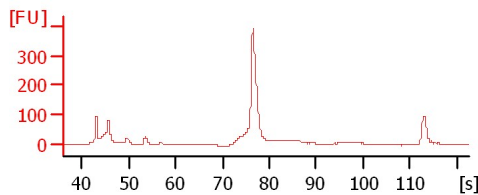
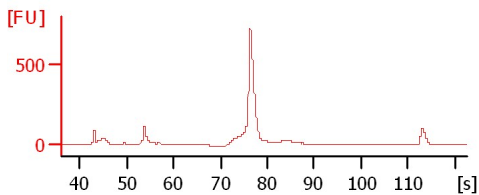
**24hr BF 7**



**24hr Endo 7**

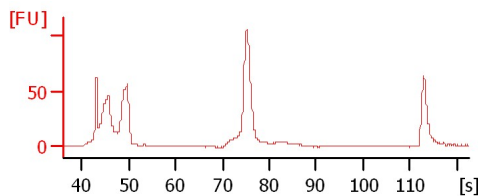
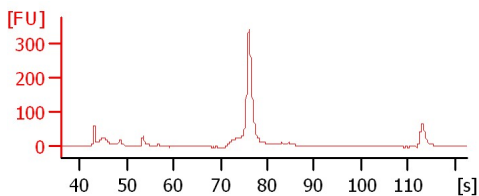
**72hr Media 6**

**72hr BF 6**



**72hr Endo 6**

**0hr Post BF 1**



Assay Class: High Sensitivity DNA Assay  
Data Path: C:\...ents and Settings\Bioanalyzer\2013-10-21\2013-10-21\_005.xad

Created: 10/21/2013 1:25:10 PM  
Modified: 10/21/2013 2:51:15 PM

**Electrophoresis File Run Summary (Chip Summary)**

Sample Name	Sample Comment	Rest. Digest	Status	Observation	Result Label	Result Color
24hr Endo 3		<input type="checkbox"/>	✓			
24hr Media 5		<input type="checkbox"/>	✓			
24hr BF 5		<input type="checkbox"/>	✓			
24hr Endo 5		<input type="checkbox"/>	✓			
24hr Media 7		<input type="checkbox"/>	✓			
24hr BF 7		<input type="checkbox"/>	✓			
24hr Endo 7		<input type="checkbox"/>	✓			
72hr Media 6		<input type="checkbox"/>	✓			
72hr BF 6		<input type="checkbox"/>	✓			
72hr Endo 6		<input type="checkbox"/>	✓			
0hr Post BF 1		<input type="checkbox"/>	✓			
Ladder		<input type="checkbox"/>	✓			

**Chip Lot #**

**Reagent Kit Lot #**

**Chip Comments :**

Assay Class: High Sensitivity DNA Assay  
Data Path: C:\...ents and Settings\Bioanalyzer\2013-10-21\2013-10-21\_005.xad

Created: 10/21/2013 1:25:10 PM  
Modified: 10/21/2013 2:51:15 PM

**Electrophoresis Assay Details**

**General Analysis Settings**

Number of Available Sample and Ladder Wells (Max.) : 12  
Minimum Visible Range [s] : 32  
Maximum Visible Range [s] : 138  
Start Analysis Time Range [s] : 33  
End Analysis Time Range [s] : 137.5  
Ladder Concentration [pg/μl] : 1950  
Uses Standard Area for Ladder Fragments  
Lower Marker Concentration [pg/μl] : 125  
Upper Marker Concentration [pg/μl] : 75  
Used Upper Marker for Quantitation  
Standard Curve Fit is Point to Point  
Show Data Aligned to Lower and Upper Marker

**Integrator Settings**

Integration Start Time [s] : 33.05  
Integration End Time [s] : 137  
Slope Threshold : 0.8  
Height Threshold [FU] : 5  
Area Threshold : 0.1  
Width Threshold [s] : 0.6  
Baseline Plateau [s] : 0.5

**Filter Settings**

Filter Width [s] : 0.5  
Polynomial Order : 4

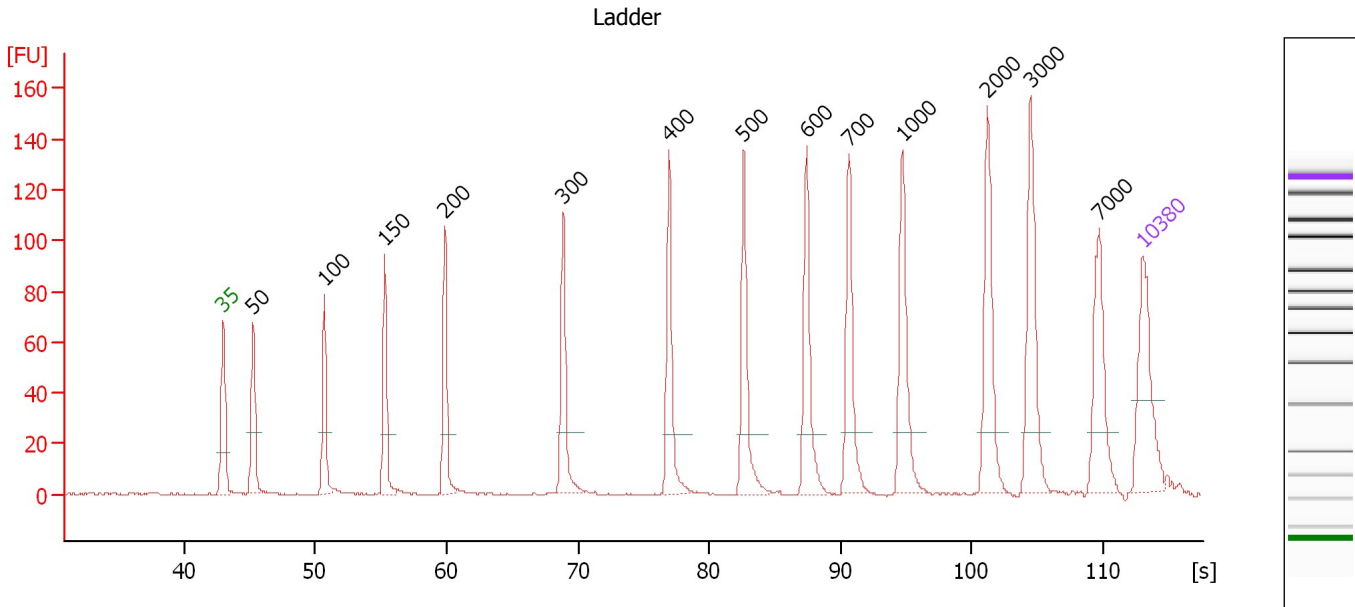
**Ladder**

Ladder Peak	Size	Area
1	35	160
2	50	210
3	100	208
4	150	221
5	200	242
6	300	270
7	400	305
8	500	306
9	600	336
10	700	321
11	1000	366
12	2000	413
13	3000	411
14	7000	400
15	10380	214

Assay Class: High Sensitivity DNA Assay  
 Data Path: C:\...ents and Settings\Bioanalyzer\2013-10-21\2013-10-21\_005.xad

Created: 10/21/2013 1:25:10 PM  
 Modified: 10/21/2013 2:51:15 PM

**Electropherogram Summary**



**Overall Results for Ladder**

Noise: 0.2

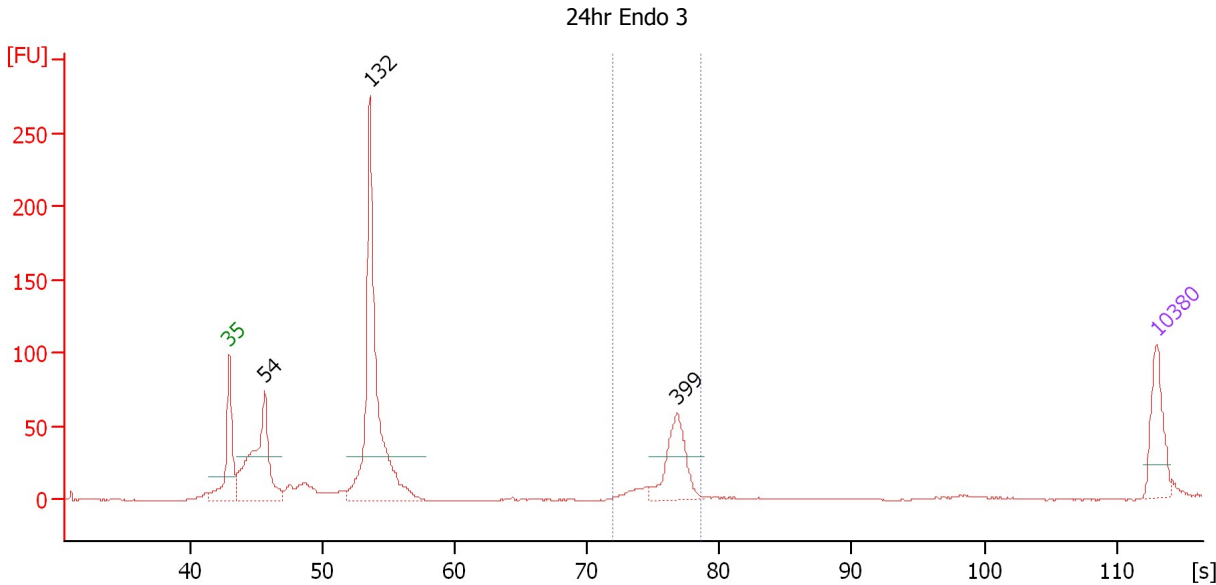
**Peak table for Ladder**

Peak	Size [bp]	Conc. [pg/µl]	Molarity [pmol/l]	Observations
1	35	125.00	5,411.3	Lower Marker
2	50	150.00	4,545.5	Ladder Peak
3	100	150.00	2,272.7	Ladder Peak
4	150	150.00	1,515.2	Ladder Peak
5	200	150.00	1,136.4	Ladder Peak
6	300	150.00	757.6	Ladder Peak
7	400	150.00	568.2	Ladder Peak
8	500	150.00	454.5	Ladder Peak
9	600	150.00	378.8	Ladder Peak
10	700	150.00	324.7	Ladder Peak
11	1,000	150.00	227.3	Ladder Peak
12	2,000	150.00	113.6	Ladder Peak
13	3,000	150.00	75.8	Ladder Peak
14	7,000	150.00	32.5	Ladder Peak
15	10,380	75.00	10.9	Upper Marker

Assay Class: High Sensitivity DNA Assay  
 Data Path: C:\...ents and Settings\Bioanalyzer\2013-10-21\2013-10-21\_005.xad

Created: 10/21/2013 1:25:10 PM  
 Modified: 10/21/2013 2:51:15 PM

**Electropherogram Summary Continued ...**



**Setpoint Deviations for sample 1 : 24hr Endo 3**

Height Threshold [FU] : 30

**Overall Results for sample 1 : 24hr Endo 3**

Number of peaks found: 3                      Corr. Area 1: 146.0  
 Noise: 0.2

**Peak table for sample 1 : 24hr Endo 3**

Peak	Size [bp]	Conc. [pg/µl]	Molarity [pmol/l]	Observations
1	35	125.00	5,411.3	Lower Marker
2	54	384.95	10,887.7	
3	132	733.12	8,431.9	
4	399	146.06	554.8	
5	10,380	75.00	10.9	Upper Marker

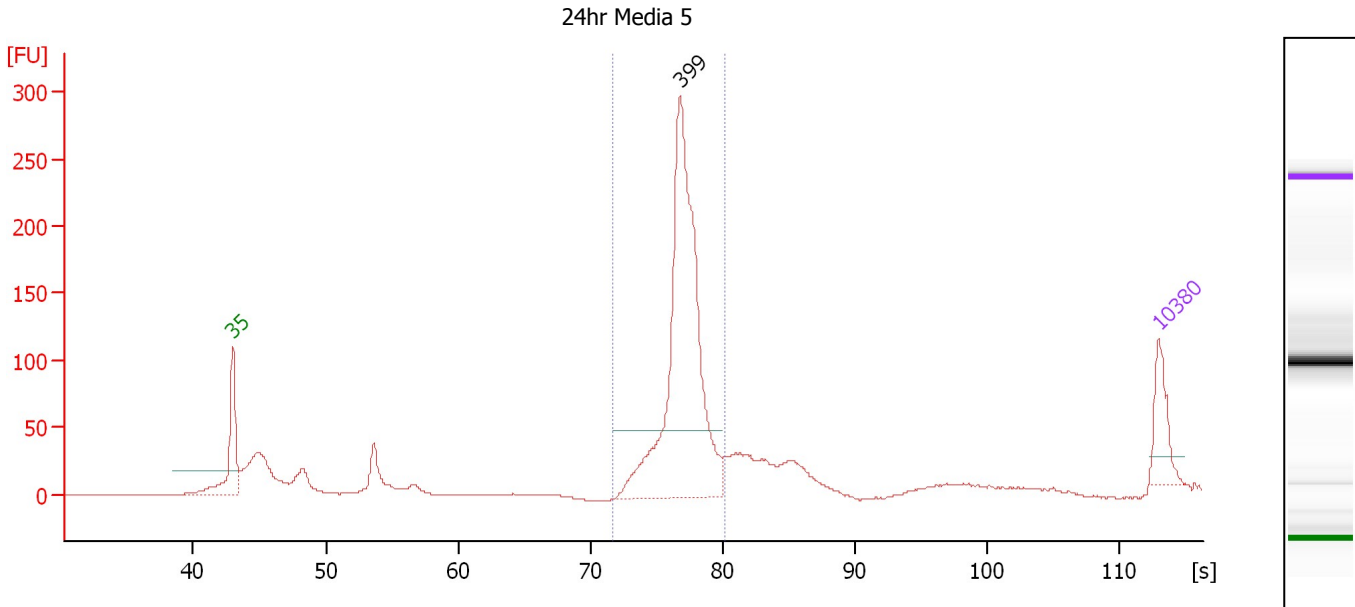
**Region table for sample 1 : 24hr Endo 3**

From [s]	To [s]	Average Size [bp]	Molarity [pmol/l]	Conc. [pg/µl]	Corr. Area % of Total	Size distribution in CV [%]	Color
72.01	78.62	394	607.7	157.68	146.0 15	3.9	Blue

Assay Class: High Sensitivity DNA Assay  
 Data Path: C:\...ents and Settings\Bioanalyzer\2013-10-21\2013-10-21\_005.xad

Created: 10/21/2013 1:25:10 PM  
 Modified: 10/21/2013 2:51:15 PM

**Electropherogram Summary Continued ...**



**Setpoint Deviations for sample 2 : 24hr Media 5**

Height Threshold [FU] : 50

**Overall Results for sample 2 : 24hr Media 5**

Number of peaks found: 1                      Corr. Area 1: 899.4  
 Noise: 0.2

**Peak table for sample 2 : 24hr Media 5**

Peak	Size [bp]	Conc. [pg/μl]	Molarity [pmol/l]	Observations
1	35	125.00	5,411.3	Lower Marker
2	399	951.43	3,616.7	
3	10,380	75.00	10.9	Upper Marker

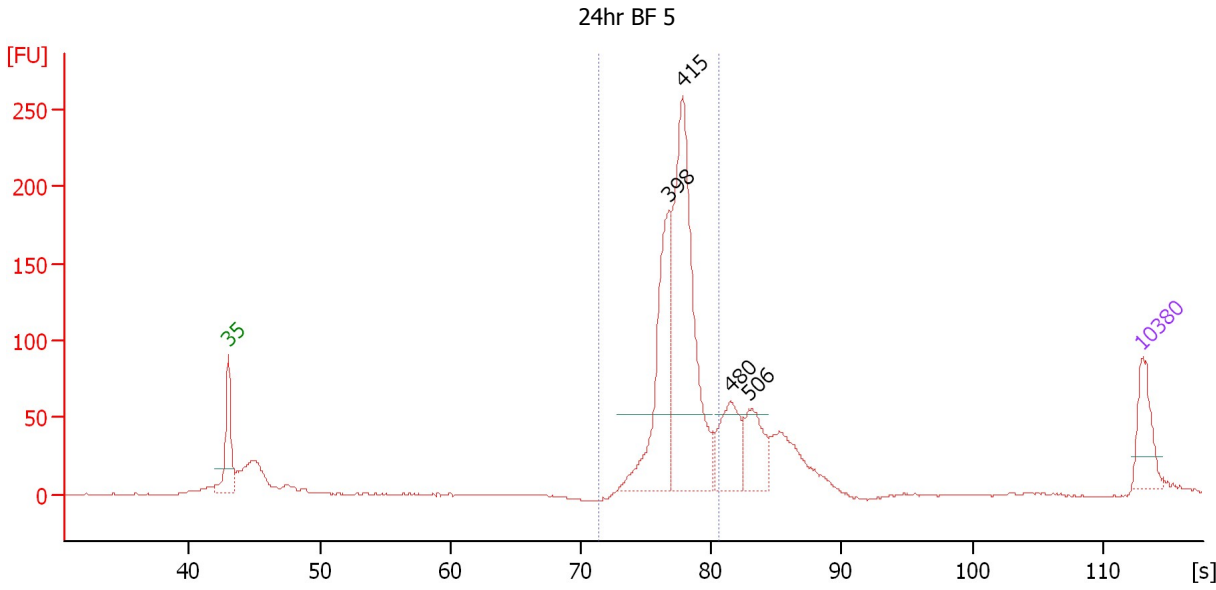
**Region table for sample 2 : 24hr Media 5**

From [s]	To [s]	Average Size [bp]	Molarity [pmol/l]	Conc. [pg/μl]	Corr. Area % of Total	Size distribution in CV [%]	Color
71.77	80.25	404	3,327.8	885.64	899.4 66	4.6	Blue

Assay Class: High Sensitivity DNA Assay  
 Data Path: C:\...ents and Settings\Bioanalyzer\2013-10-21\2013-10-21\_005.xad

Created: 10/21/2013 1:25:10 PM  
 Modified: 10/21/2013 2:51:15 PM

**Electropherogram Summary Continued ...**



**Setpoint Deviations for sample 3 : 24hr BF 5**

Height Threshold [FU] : 50

**Overall Results for sample 3 : 24hr BF 5**

Number of peaks found: 4      Corr. Area 1: 951.4  
 Noise: 0.5

**Peak table for sample 3 : 24hr BF 5**

Peak	Size [bp]	Conc. [pg/µl]	Molarity [pmol/l]	Observations
1	35	125.00	5,411.3	Lower Marker
2	398	370.37	1,410.4	
3	415	653.36	2,384.9	
4	480	150.91	476.1	
5	506	123.77	370.8	
6	10,380	75.00	10.9	Upper Marker

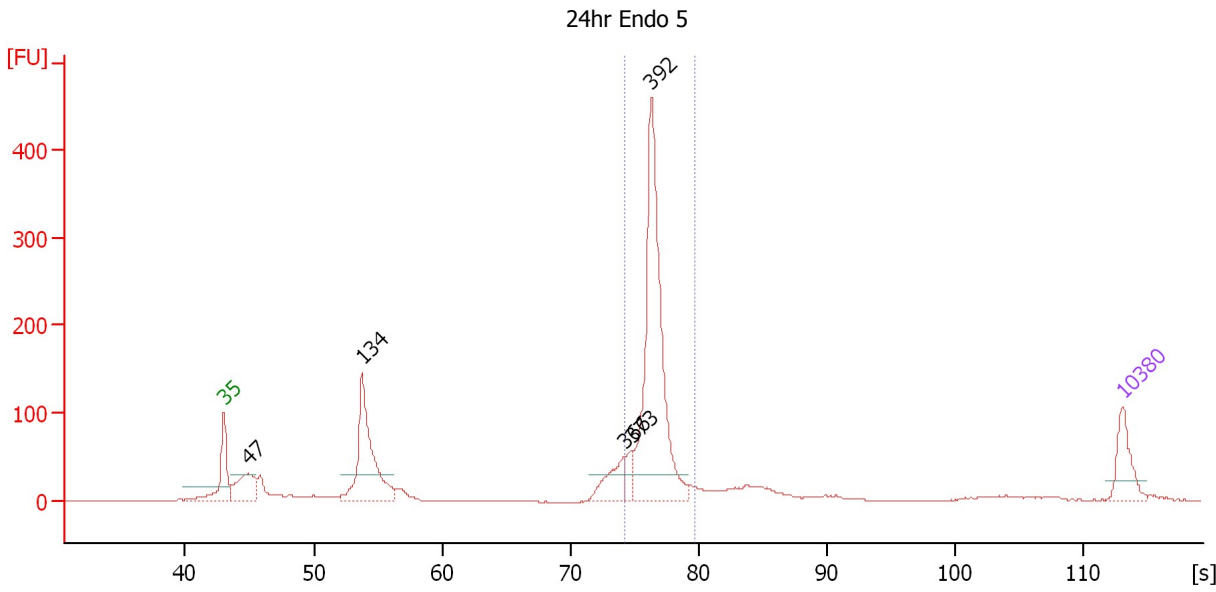
**Region table for sample 3 : 24hr BF 5**

From [s]	To [s]	Average Size [bp]	Molarity [pmol/l]	Conc. [pg/µl]	Corr. Area	% of Total	Size distribution in CV [%]	Color
71.44	80.57	410	3,960.2	1,069.03	951.4	64	5.0	Blue

Assay Class: High Sensitivity DNA Assay  
 Data Path: C:\...ents and Settings\Bioanalyzer\2013-10-21\2013-10-21\_005.xad

Created: 10/21/2013 1:25:10 PM  
 Modified: 10/21/2013 2:51:15 PM

**Electropherogram Summary Continued ...**



**Setpoint Deviations for sample 4 : 24hr Endo 5**

Height Threshold [FU] : 30

**Overall Results for sample 4 : 24hr Endo 5**

Number of peaks found: 5      Corr. Area 1: 934.7  
 Noise: 0.6

**Peak table for sample 4 : 24hr Endo 5**

Peak	Size [bp]	Conc. [pg/μl]	Molarity [pmol/l]	Observations
1	35	125.00	5,411.3	Lower Marker
2	47	171.00	5,473.5	
3	134	450.70	5,110.0	
4	366	101.29	419.1	
5	373	44.88	182.1	
6	392	795.73	3,074.4	
7	10,380	75.00	10.9	Upper Marker

**Region table for sample 4 : 24hr Endo 5**

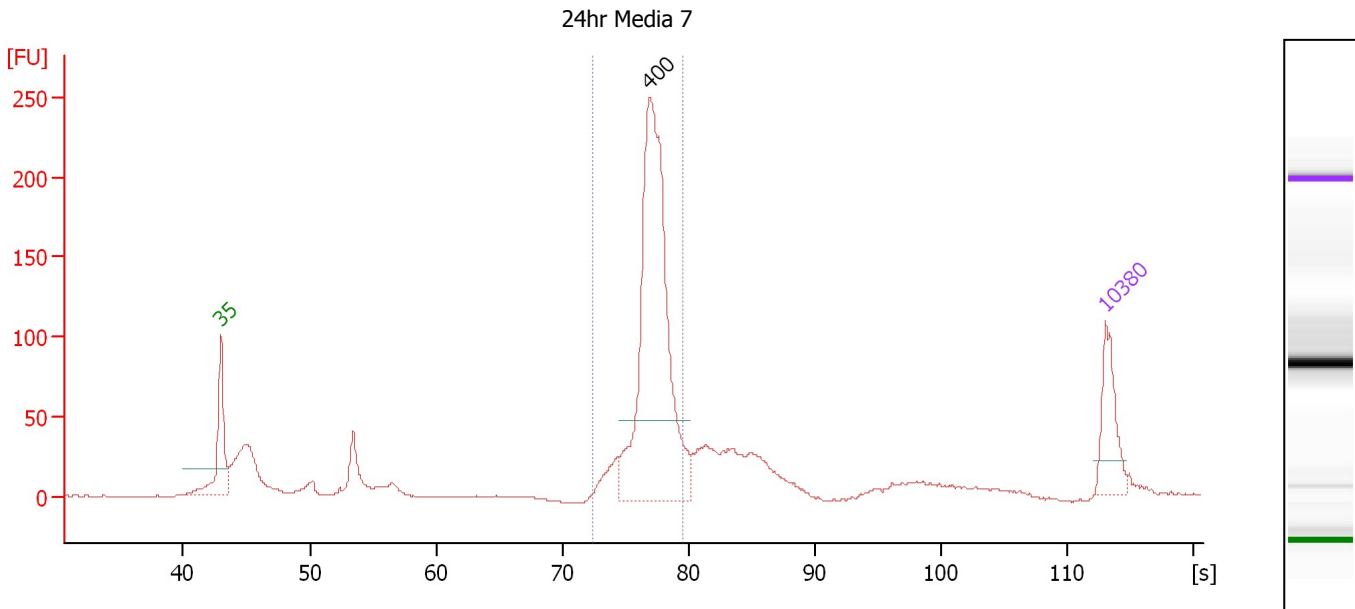
From [s]	To [s]	Average Size [bp]	Molarity [pmol/l]	Conc. [pg/μl]	Corr. Area	% of Total	Size distribution in CV [%]	Color
74.18	79.64	395	3,281.6	854.95	934.7	52	3.4	Blue



Assay Class: High Sensitivity DNA Assay  
 Data Path: C:\...ents and Settings\Bioanalyzer\2013-10-21\2013-10-21\_005.xad

Created: 10/21/2013 1:25:10 PM  
 Modified: 10/21/2013 2:51:15 PM

**Electropherogram Summary Continued ...**



**Setpoint Deviations for sample 5 : 24hr Media 7**

Height Threshold [FU] : 50

**Overall Results for sample 5 : 24hr Media 7**

Number of peaks found: 1                      Corr. Area 1: 818.9  
 Noise: 0.4

**Peak table for sample 5 : 24hr Media 7**

Peak	Size [bp]	Conc. [pg/μl]	Molarity [pmol/l]	Observations
1	35	125.00	5,411.3	Lower Marker
2	400	723.63	2,742.8	
3	10,380	75.00	10.9	Upper Marker

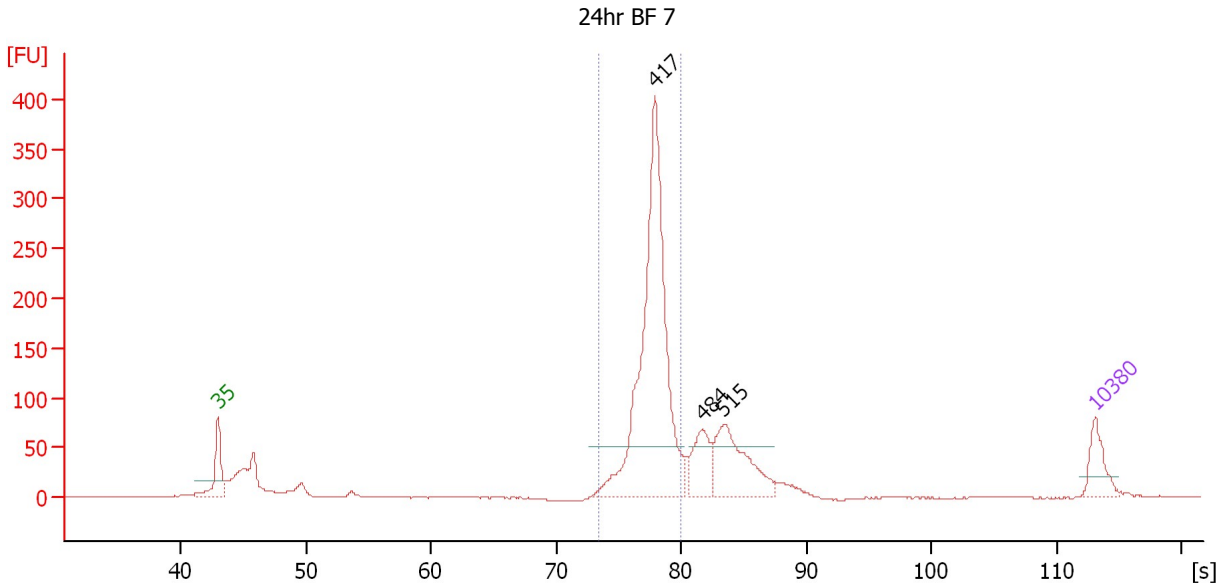
**Region table for sample 5 : 24hr Media 7**

From [s]	To [s]	Average Size [bp]	Molarity [pmol/l]	Conc. [pg/μl]	Corr. Area % of Total	Size distribution in CV [%]	Color
72.39	79.60	404	2,675.9	712.84	818.9 57	4.4	Blue

Assay Class: High Sensitivity DNA Assay  
 Data Path: C:\...ents and Settings\Bioanalyzer\2013-10-21\2013-10-21\_005.xad

Created: 10/21/2013 1:25:10 PM  
 Modified: 10/21/2013 2:51:15 PM

**Electropherogram Summary Continued ...**



**Setpoint Deviations for sample 6 : 24hr BF 7**

Height Threshold [FU] : 50

**Overall Results for sample 6 : 24hr BF 7**

Number of peaks found: 3                      Corr. Area 1: 1,074.5  
 Noise: 0.5

**Peak table for sample 6 : 24hr BF 7**

Peak	Size [bp]	Conc. [pg/µl]	Molarity [pmol/l]	Observations
1	35	125.00	5,411.3	Lower Marker
2	417	1,227.20	4,456.9	
3	484	153.72	481.6	
4	515	299.41	880.0	
5	10,380	75.00	10.9	Upper Marker

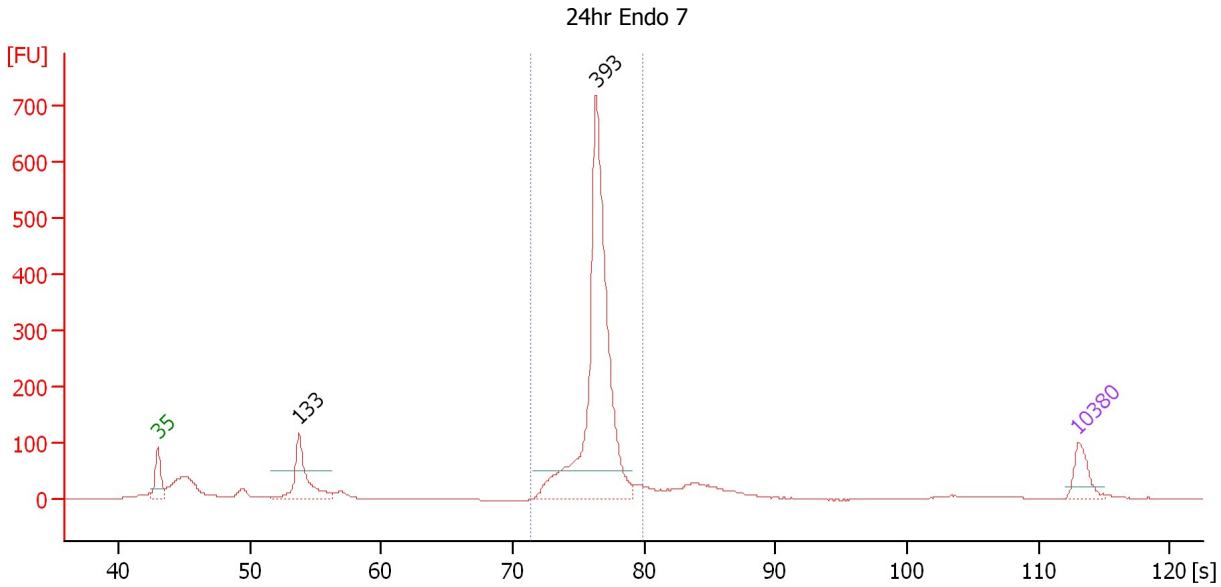
**Region table for sample 6 : 24hr BF 7**

From [s]	To [s]	Average Size [bp]	Molarity [pmol/l]	Conc. [pg/µl]	Corr. Area % of Total	Size distribution in CV [%]	Color
73.47	79.91	413	4,425.8	1,204.76	1,074.5 59	4.3	Blue

Assay Class: High Sensitivity DNA Assay  
 Data Path: C:\...ents and Settings\Bioanalyzer\2013-10-21\2013-10-21\_005.xad

Created: 10/21/2013 1:25:10 PM  
 Modified: 10/21/2013 2:51:15 PM

**Electropherogram Summary Continued ...**



**Setpoint Deviations for sample 7 : 24hr Endo 7**

Height Threshold [FU] : 50

**Overall Results for sample 7 : 24hr Endo 7**

Number of peaks found: 2                      Corr. Area 1: 1,579.8  
 Noise: 0.4

**Peak table for sample 7 : 24hr Endo 7**

Peak	Size [bp]	Conc. [pg/µl]	Molarity [pmol/l]	Observations
1	35	125.00	5,411.3	Lower Marker
2	133	316.56	3,615.4	
3	393	1,454.21	5,612.4	
4	10,380	75.00	10.9	Upper Marker

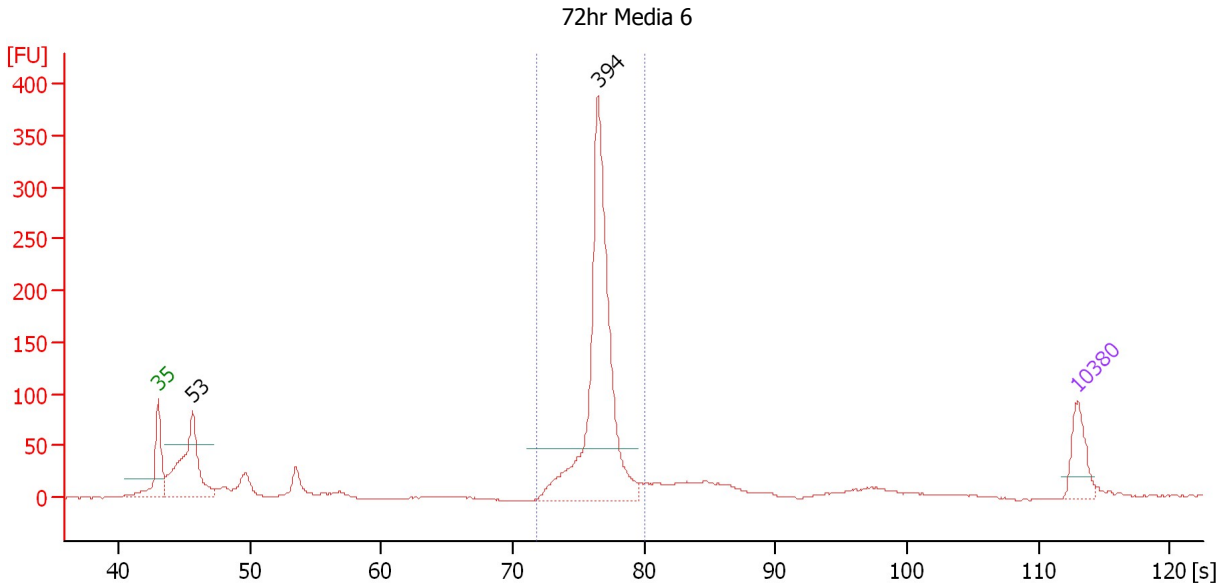
**Region table for sample 7 : 24hr Endo 7**

From [s]	To [s]	Average Size [bp]	Molarity [pmol/l]	Conc. [pg/µl]	Corr. Area % of Total	Size distribution in CV [%]	Color
71.28	79.84	394	5,688.0	1,475.78	1,579.8 67	4.4	Blue

Assay Class: High Sensitivity DNA Assay  
 Data Path: C:\...ents and Settings\Bioanalyzer\2013-10-21\2013-10-21\_005.xad

Created: 10/21/2013 1:25:10 PM  
 Modified: 10/21/2013 2:51:15 PM

**Electropherogram Summary Continued ...**



**Setpoint Deviations for sample 8 : 72hr Media 6**

Height Threshold [FU] : 50

**Overall Results for sample 8 : 72hr Media 6**

Number of peaks found: 2                      Corr. Area 1: 837.3  
 Noise: 0.3

**Peak table for sample 8 : 72hr Media 6**

Peak	Size [bp]	Conc. [pg/µl]	Molarity [pmol/l]	Observations
1	35	125.00	5,411.3	Lower Marker
2	53	394.14	11,225.8	
3	394	881.03	3,387.0	
4	10,380	75.00	10.9	Upper Marker

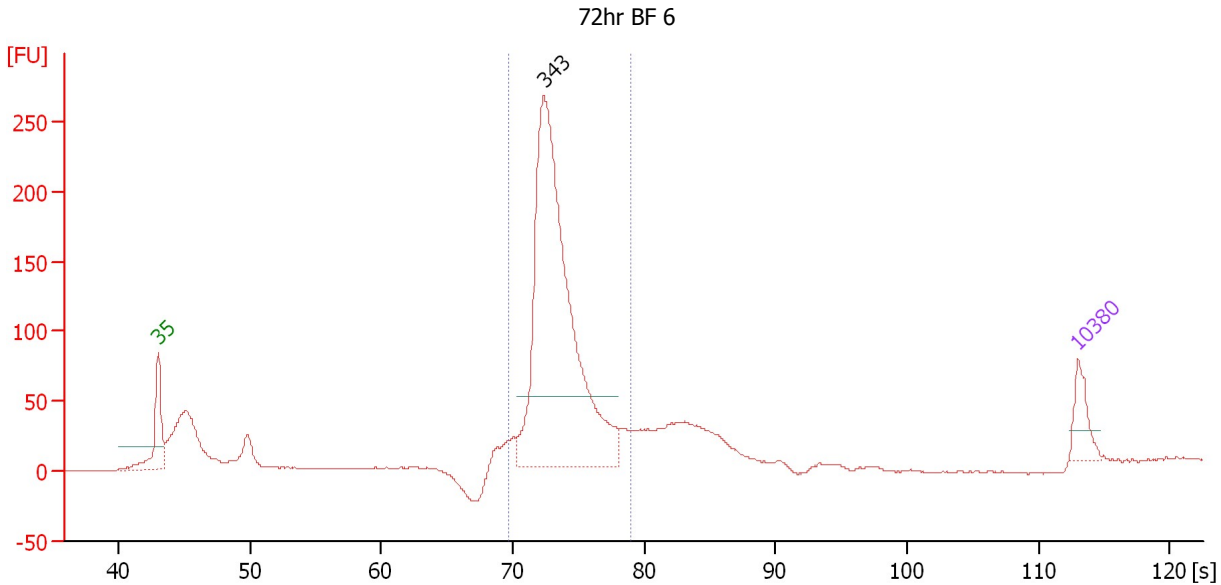
**Region table for sample 8 : 72hr Media 6**

From [s]	To [s]	Average Size [bp]	Molarity [pmol/l]	Conc. [pg/µl]	Corr. Area % of Total	Size distribution in CV [%]	Color
71.75	80.07	396	3,233.7	844.68	837.3 59	4.1	Blue

Assay Class: High Sensitivity DNA Assay  
 Data Path: C:\...ents and Settings\Bioanalyzer\2013-10-21\2013-10-21\_005.xad

Created: 10/21/2013 1:25:10 PM  
 Modified: 10/21/2013 2:51:15 PM

**Electropherogram Summary Continued ...**



**Setpoint Deviations for sample 9 : 72hr BF 6**

Height Threshold [FU] : 50

**Overall Results for sample 9 : 72hr BF 6**

Number of peaks found: 1                      Corr. Area 1: 1,172.7  
 Noise: 0.4

**Peak table for sample 9 : 72hr BF 6**

Peak	Size [bp]	Conc. [pg/μl]	Molarity [pmol/l]	Observations
1	35	125.00	5,411.3	Lower Marker
2	343	1,731.69	7,647.7	
3	10,380	75.00	10.9	Upper Marker

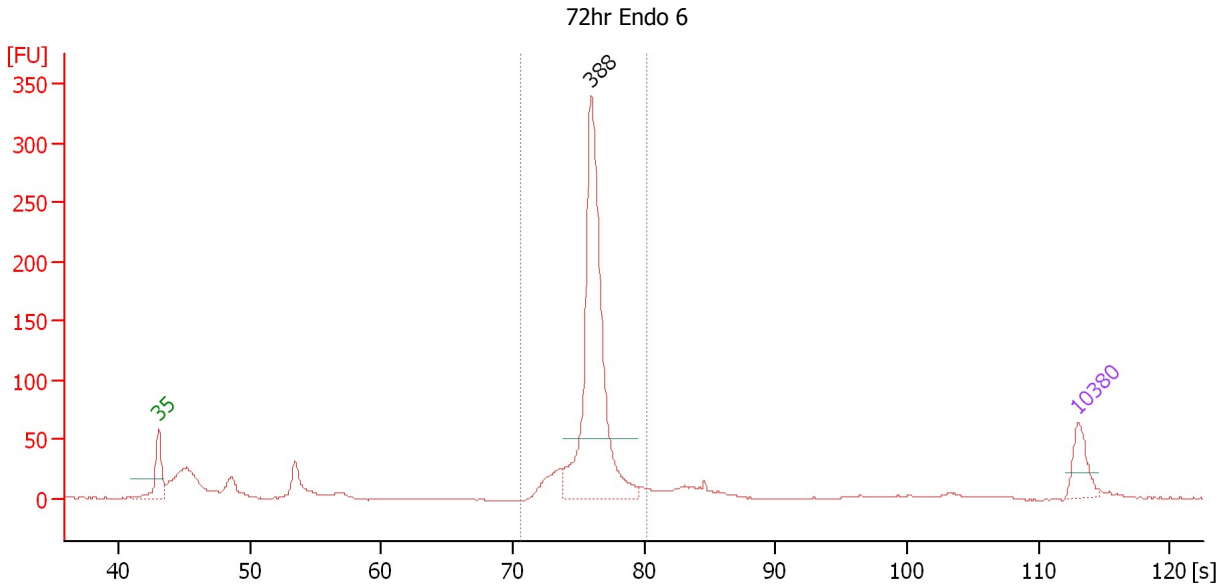
**Region table for sample 9 : 72hr BF 6**

From [s]	To [s]	Average Size [bp]	Molarity [pmol/l]	Conc. [pg/μl]	Corr. Area % of Total	Size distribution in CV [%]	Color
69.66	78.95	358	7,409.0	1,743.55	1,172.7 66	6.5	Blue

Assay Class: High Sensitivity DNA Assay  
 Data Path: C:\...ents and Settings\Bioanalyzer\2013-10-21\2013-10-21\_005.xad

Created: 10/21/2013 1:25:10 PM  
 Modified: 10/21/2013 2:51:15 PM

**Electropherogram Summary Continued ...**



**Setpoint Deviations for sample 10 : 72hr Endo 6**

Height Threshold [FU] : 50

**Overall Results for sample 10 : 72hr Endo 6**

Number of peaks found: 1                      Corr. Area 1: 733.6  
 Noise: 0.6

**Peak table for sample 10 : 72hr Endo 6**

Peak	Size [bp]	Conc. [pg/μl]	Molarity [pmol/l]	Observations
1	35	125.00	5,411.3	Lower Marker
2	388	1,031.27	4,026.8	
3	10,380	75.00	10.9	Upper Marker

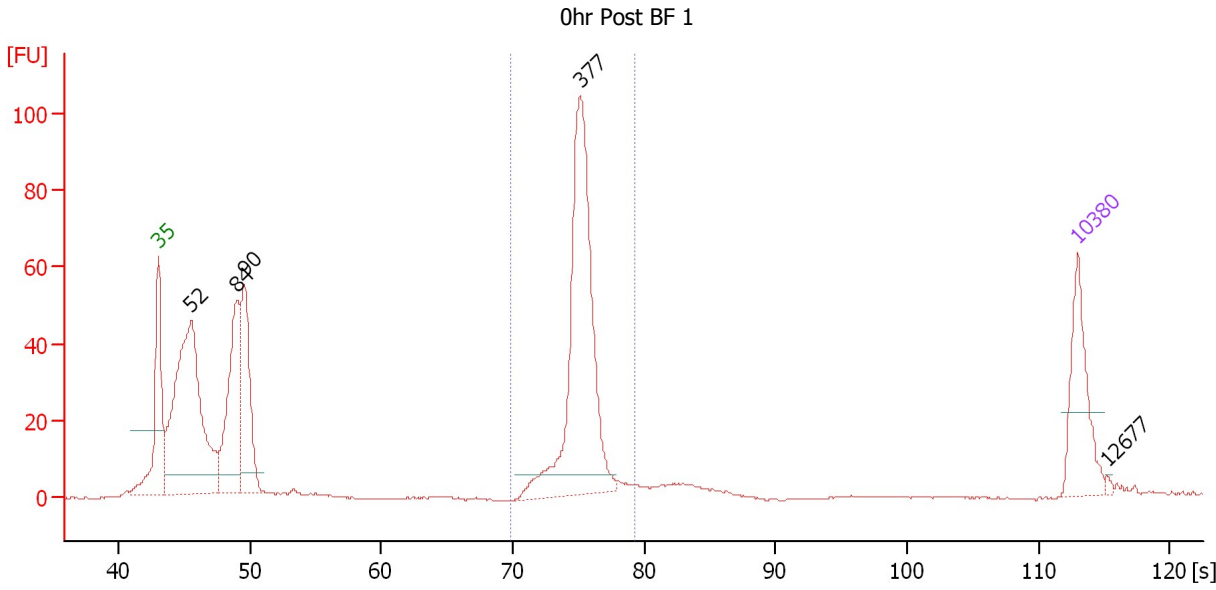
**Region table for sample 10 : 72hr Endo 6**

From [s]	To [s]	Average Size [bp]	Molarity [pmol/l]	Conc. [pg/μl]	Corr. Area % of Total	Size distribution in CV [%]	Color
70.66	80.25	389	4,321.6	1,108.88	733.6 69	4.5	Blue

Assay Class: High Sensitivity DNA Assay  
 Data Path: C:\...ents and Settings\Bioanalyzer\2013-10-21\2013-10-21\_005.xad

Created: 10/21/2013 1:25:10 PM  
 Modified: 10/21/2013 2:51:15 PM

**Electropherogram Summary Continued ...**



**Overall Results for sample 11 : 0hr Post BF 1**

Number of peaks found: 5                      Corr. Area 1: 277.9  
 Noise: 0.2

**Peak table for sample 11 : 0hr Post BF 1**

Peak	Size [bp]	Conc. [pg/μl]	Molarity [pmol/l]	Observations
1	35	125.00	5,411.3	Lower Marker
2	52	476.99	13,860.6	
3	84	210.53	3,786.1	
4	90	176.45	2,981.3	
5	377	378.09	1,518.9	
6	10,380	75.00	10.9	Upper Marker
7	12,677	0.00	0.0	

**Region table for sample 11 : 0hr Post BF 1**

From [s]	To [s]	Average Size [bp]	Molarity [pmol/l]	Conc. [pg/μl]	Corr. Area % of Total	Size distribution in CV [%]	Color
69.88	79.28	378	1,574.2	392.76	277.9 36	4.1	Blue

Assay Class: High Sensitivity DNA Assay  
Data Path: C:\...ents and Settings\Bioanalyzer\2013-10-21\2013-10-21\_005.xad

Created: 10/21/2013 1:25:10 PM  
Modified: 10/21/2013 2:51:15 PM

**Gel Image**

