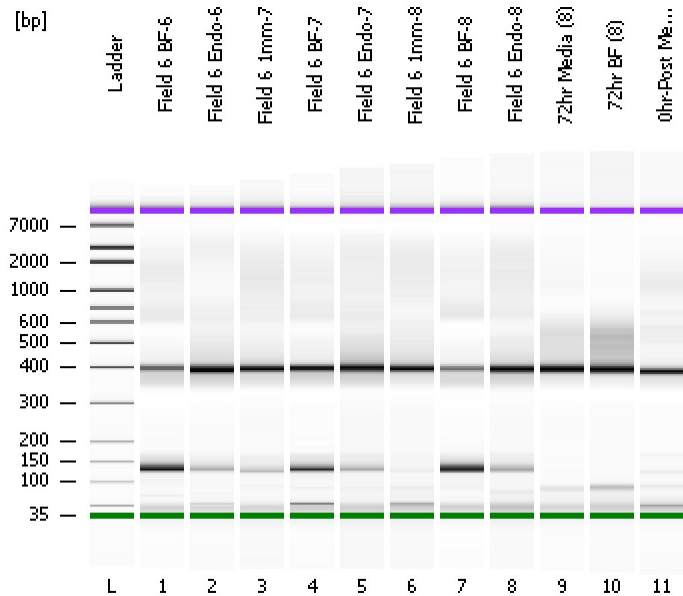


Assay Class: High Sensitivity DNA Assay
Data Path: C:\...ents and Settings\Bioanalyzer\2013-10-21\2013-10-21_007.xad

Created: 10/21/2013 3:28:25 PM
Modified: 10/21/2013 4:09:44 PM

Electrophoresis File Run Summary



Instrument Information:

Instrument Name: DE13701086 Firmware: C.01.069
Serial#: DE13701086 Type: G2938B

Assay Information:

Assay Origin Path: C:\Program Files\Agilent\2100 bioanalyzer\2100 expert\assays\dsDNA\High Sensitivity DNA.xsy
Assay Class: High Sensitivity DNA Assay
Version: 1.03
Assay Comments: Copyright © 2003-2010 Agilent Technologies

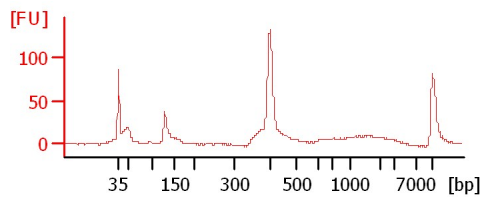
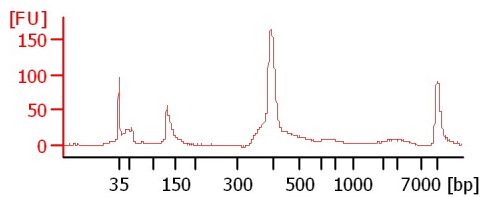
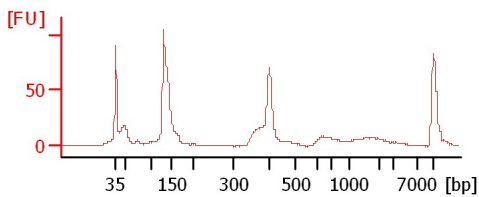
Chip Information:

Chip Lot #:
Reagent Kit Lot #:
Chip Comments:

Field 6 BF-6

Field 6 Endo-6

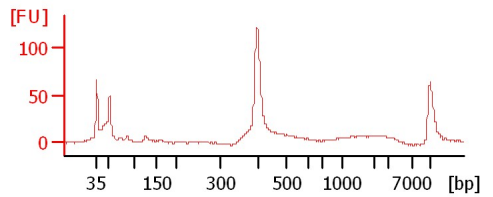
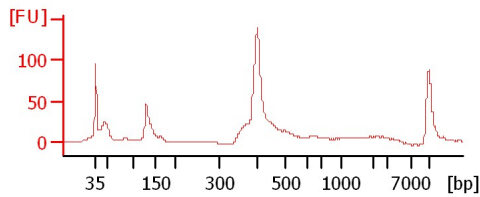
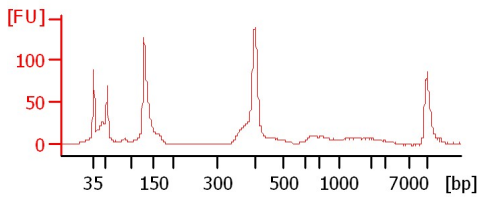
Field 6 1mm-7



Field 6 BF-7

Field 6 Endo-7

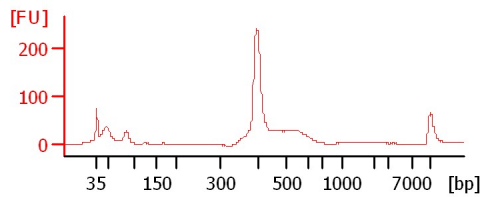
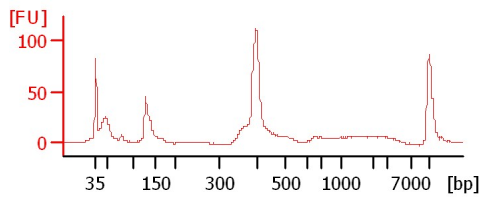
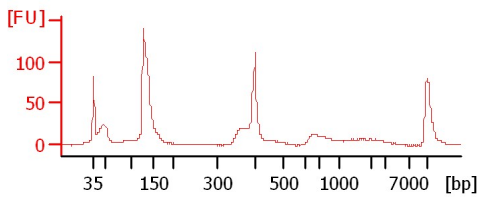
Field 6 1mm-8



Field 6 BF-8

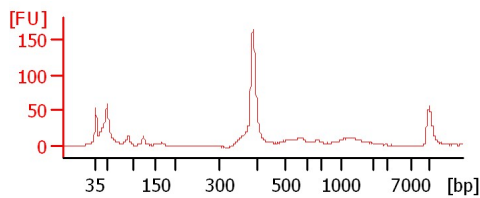
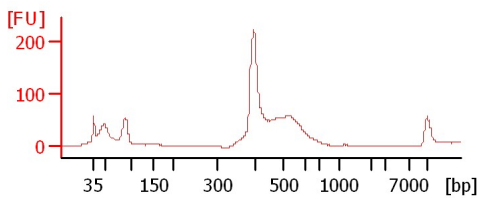
Field 6 Endo-8

72hr Media (8)



72hr BF (8)

0hr-Post Media (18) V



Assay Class: High Sensitivity DNA Assay
 Data Path: C:\...ents and Settings\Bioanalyzer\2013-10-21\2013-10-21_007.xad

Created: 10/21/2013 3:28:25 PM
 Modified: 10/21/2013 4:09:44 PM

Electrophoresis File Run Summary (Chip Summary)

Sample Name	Sample Comment	Rest. Digest	Status	Observation	Result Label	Result Color
Field 6 BF-6		<input type="checkbox"/>	✓			
Field 6 Endo-6		<input type="checkbox"/>	✓			
Field 6 1mm-7		<input type="checkbox"/>	✓			
Field 6 BF-7		<input type="checkbox"/>	✓			
Field 6 Endo-7		<input type="checkbox"/>	✓			
Field 6 1mm-8		<input type="checkbox"/>	✓			
Field 6 BF-8		<input type="checkbox"/>	✓			
Field 6 Endo-8		<input type="checkbox"/>	✓			
72hr Media (8)		<input type="checkbox"/>	✓			
72hr BF (8)		<input type="checkbox"/>	✓			
0hr-Post Media (18) V		<input type="checkbox"/>	✓			
Ladder		<input type="checkbox"/>	✓			

Chip Lot #

Reagent Kit Lot #

Chip Comments :

Assay Class: High Sensitivity DNA Assay
Data Path: C:\...ents and Settings\Bioanalyzer\2013-10-21\2013-10-21_007.xad

Created: 10/21/2013 3:28:25 PM
Modified: 10/21/2013 4:09:44 PM

Electrophoresis Assay Details

General Analysis Settings

Number of Available Sample and Ladder Wells (Max.) : 12
Minimum Visible Range [s] : 32
Maximum Visible Range [s] : 138
Start Analysis Time Range [s] : 33
End Analysis Time Range [s] : 137.5
Ladder Concentration [pg/μl] : 1950
Uses Standard Area for Ladder Fragments
Lower Marker Concentration [pg/μl] : 125
Upper Marker Concentration [pg/μl] : 75
Used Upper Marker for Quantitation
Standard Curve Fit is Point to Point
Show Data Aligned to Lower and Upper Marker

Integrator Settings

Integration Start Time [s] : 33.05
Integration End Time [s] : 137
Slope Threshold : 0.8
Height Threshold [FU] : 5
Area Threshold : 0.1
Width Threshold [s] : 0.6
Baseline Plateau [s] : 0.5

Filter Settings

Filter Width [s] : 0.5
Polynomial Order : 4

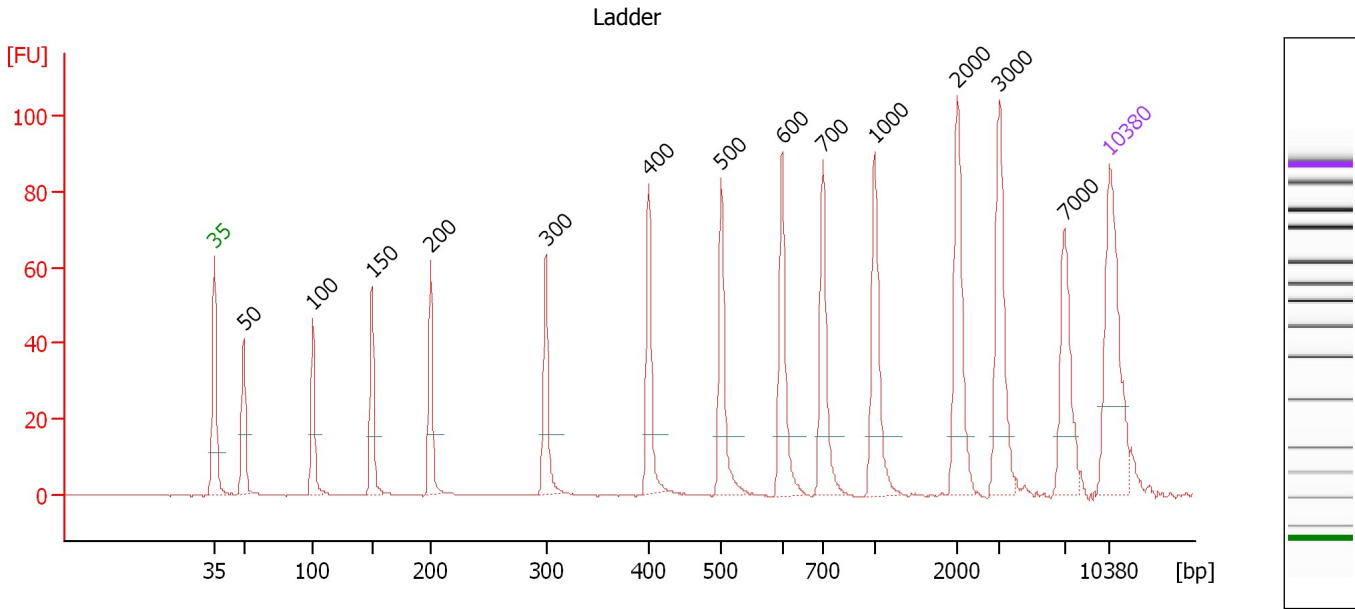
Ladder

Ladder Peak	Size	Area
1	35	160
2	50	210
3	100	208
4	150	221
5	200	242
6	300	270
7	400	305
8	500	306
9	600	336
10	700	321
11	1000	366
12	2000	413
13	3000	411
14	7000	400
15	10380	214

Assay Class: High Sensitivity DNA Assay
 Data Path: C:\...ents and Settings\Bioanalyzer\2013-10-21\2013-10-21_007.xad

Created: 10/21/2013 3:28:25 PM
 Modified: 10/21/2013 4:09:44 PM

Electropherogram Summary



Overall Results for Ladder

Noise: 0.2

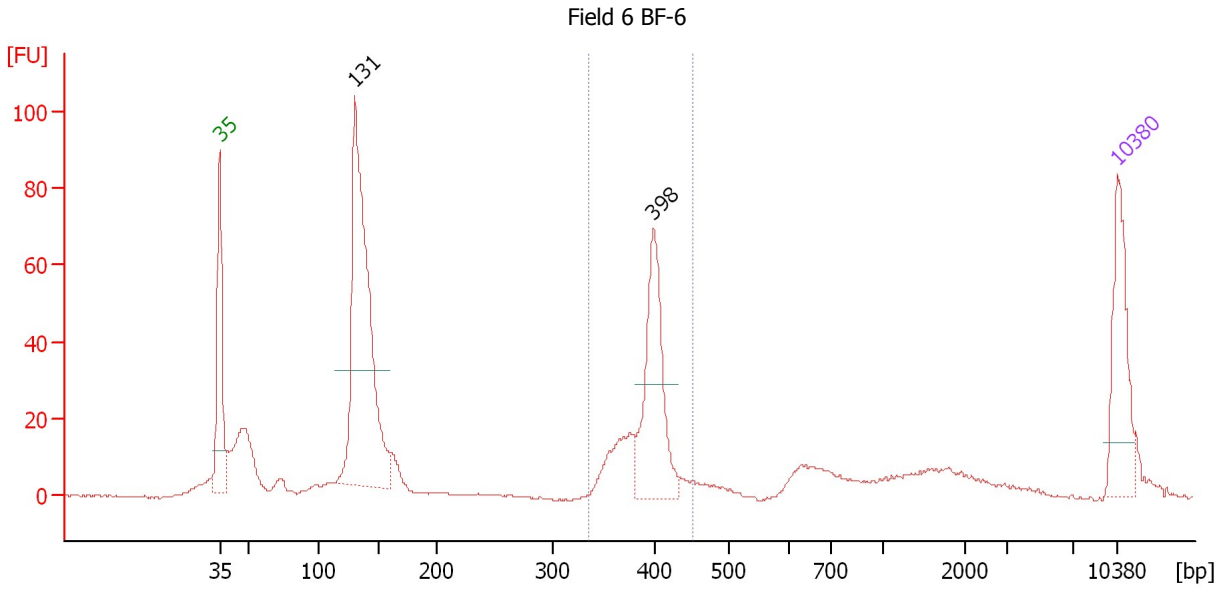
Peak table for Ladder

Peak	Size [bp]	Conc. [pg/μl]	Molarity [pmol/l]	Observations
1	35	125.00	5,411.3	Lower Marker
2	50	150.00	4,545.5	Ladder Peak
3	100	150.00	2,272.7	Ladder Peak
4	150	150.00	1,515.2	Ladder Peak
5	200	150.00	1,136.4	Ladder Peak
6	300	150.00	757.6	Ladder Peak
7	400	150.00	568.2	Ladder Peak
8	500	150.00	454.5	Ladder Peak
9	600	150.00	378.8	Ladder Peak
10	700	150.00	324.7	Ladder Peak
11	1,000	150.00	227.3	Ladder Peak
12	2,000	150.00	113.6	Ladder Peak
13	3,000	150.00	75.8	Ladder Peak
14	7,000	150.00	32.5	Ladder Peak
15	10,380	75.00	10.9	Upper Marker

Assay Class: High Sensitivity DNA Assay
 Data Path: C:\...ents and Settings\Bioanalyzer\2013-10-21\2013-10-21_007.xad

Created: 10/21/2013 3:28:25 PM
 Modified: 10/21/2013 4:09:44 PM

Electropherogram Summary Continued ...



Setpoint Deviations for sample 1 : Field 6 BF-6

Height Threshold [FU] : 30

Overall Results for sample 1 : Field 6 BF-6

Number of peaks found: 2 Corr. Area 1: 207.9
 Noise: 0.2

Peak table for sample 1 : Field 6 BF-6

Peak	Size [bp]	Conc. [pg/µl]	Molarity [pmol/l]	Observations
1	35	125.00	5,411.3	Lower Marker
2	131	469.20	5,440.3	
3	398	165.13	628.7	
4	10,380	75.00	10.9	Upper Marker

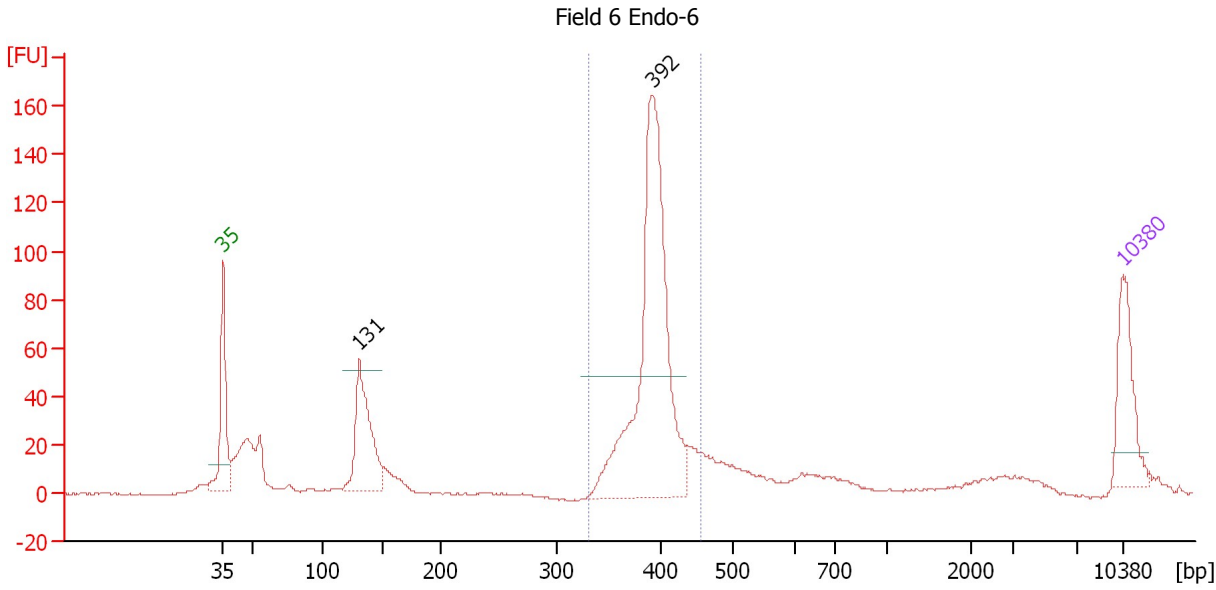
Region table for sample 1 : Field 6 BF-6

From [bp]	To [bp]	Average Size [bp]	Molarity [pmol/l]	Conc. [pg/µl]	Corr. Area	% of Total	Size distribution in CV [%]	Color
335	452	392	897.6	231.70	207.9	25	5.3	Blue

Assay Class: High Sensitivity DNA Assay
 Data Path: C:\...ents and Settings\Bioanalyzer\2013-10-21\2013-10-21_007.xad

Created: 10/21/2013 3:28:25 PM
 Modified: 10/21/2013 4:09:44 PM

Electropherogram Summary Continued ...



Setpoint Deviations for sample 2 : Field 6 Endo-6

Height Threshold [FU] : 50

Overall Results for sample 2 : Field 6 Endo-6

Number of peaks found: 2 Corr. Area 1: 557.7
 Noise: 0.3

Peak table for sample 2 : Field 6 Endo-6

Peak	Size [bp]	Conc. [pg/μl]	Molarity [pmol/l]	Observations
1	35	125.00	5,411.3	Lower Marker
2	131	196.94	2,279.2	
3	392	539.69	2,085.6	
4	10,380	75.00	10.9	Upper Marker

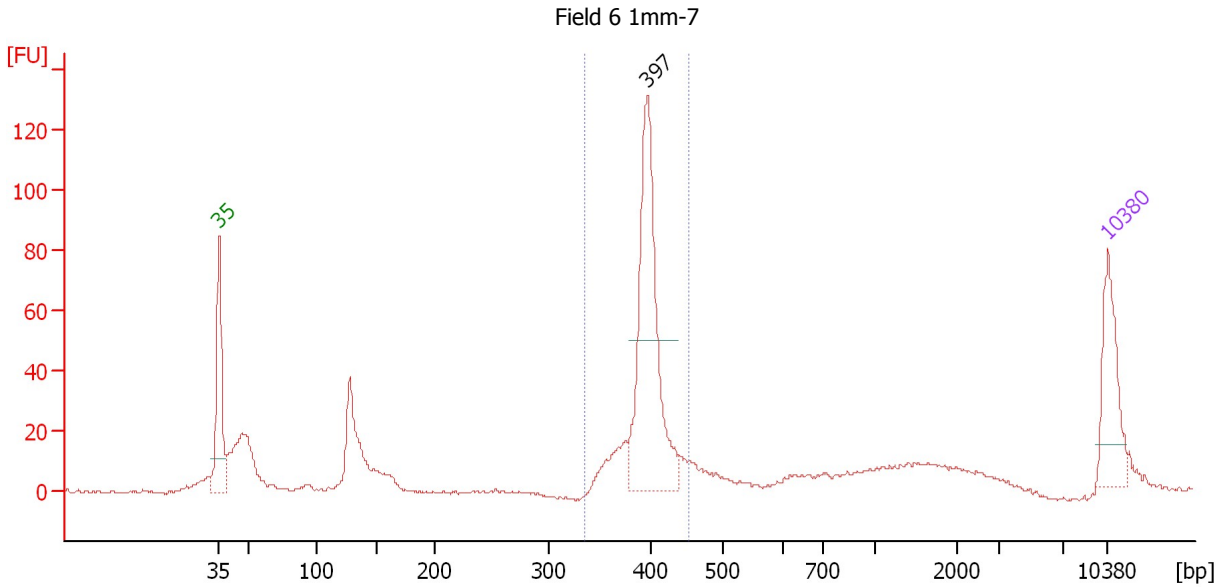
Region table for sample 2 : Field 6 Endo-6

From [bp]	To [bp]	Average Size [bp]	Molarity [pmol/l]	Conc. [pg/μl]	Corr. Area	% of Total	Size distribution in CV [%]	Color
331	455	395	2,128.9	553.11	557.7	51	5.3	Blue

Assay Class: High Sensitivity DNA Assay
 Data Path: C:\...ents and Settings\Bioanalyzer\2013-10-21\2013-10-21_007.xad

Created: 10/21/2013 3:28:25 PM
 Modified: 10/21/2013 4:09:44 PM

Electropherogram Summary Continued ...



Setpoint Deviations for sample 3 : Field 6 1mm-7

Height Threshold [FU] : 50

Overall Results for sample 3 : Field 6 1mm-7

Number of peaks found: 1 Corr. Area 1: 341.3
 Noise: 0.5

Peak table for sample 3 : Field 6 1mm-7

Peak	Size [bp]	Conc. [pg/μl]	Molarity [pmol/l]	Observations
1	35	125.00	5,411.3	Lower Marker
2	397	328.82	1,255.7	
3	10,380	75.00	10.9	Upper Marker

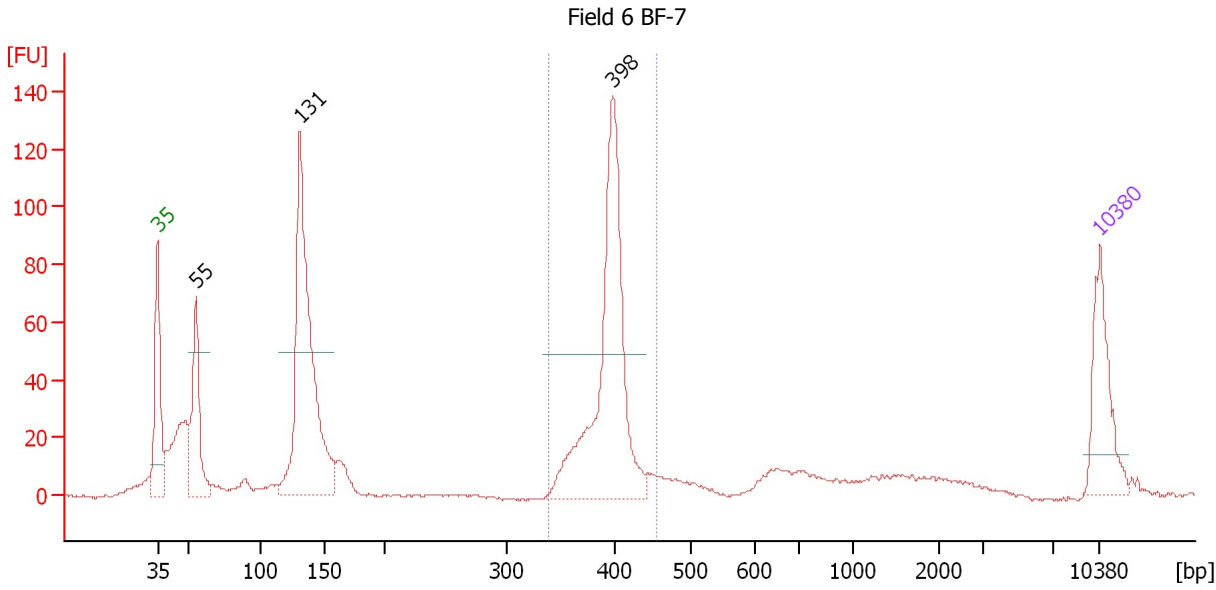
Region table for sample 3 : Field 6 1mm-7

From [bp]	To [bp]	Average Size [bp]	Molarity [pmol/l]	Conc. [pg/μl]	Corr. Area	% of Total	Size distribution in CV [%]	Color
336	454	397	1,498.4	392.27	341.3	46	4.8	Blue

Assay Class: High Sensitivity DNA Assay
 Data Path: C:\...ents and Settings\Bioanalyzer\2013-10-21\2013-10-21_007.xad

Created: 10/21/2013 3:28:25 PM
 Modified: 10/21/2013 4:09:44 PM

Electropherogram Summary Continued ...



Setpoint Deviations for sample 4 : Field 6 BF-7

Height Threshold [FU] : 50

Overall Results for sample 4 : Field 6 BF-7

Number of peaks found: 3 Corr. Area 1: 360.6
 Noise: 0.5

Peak table for sample 4 : Field 6 BF-7

Peak	Size [bp]	Conc. [pg/μl]	Molarity [pmol/l]	Observations
1	35	125.00	5,411.3	Lower Marker
2	55	144.01	3,953.0	
3	131	451.97	5,231.7	
4	398	366.34	1,395.1	
5	10,380	75.00	10.9	Upper Marker

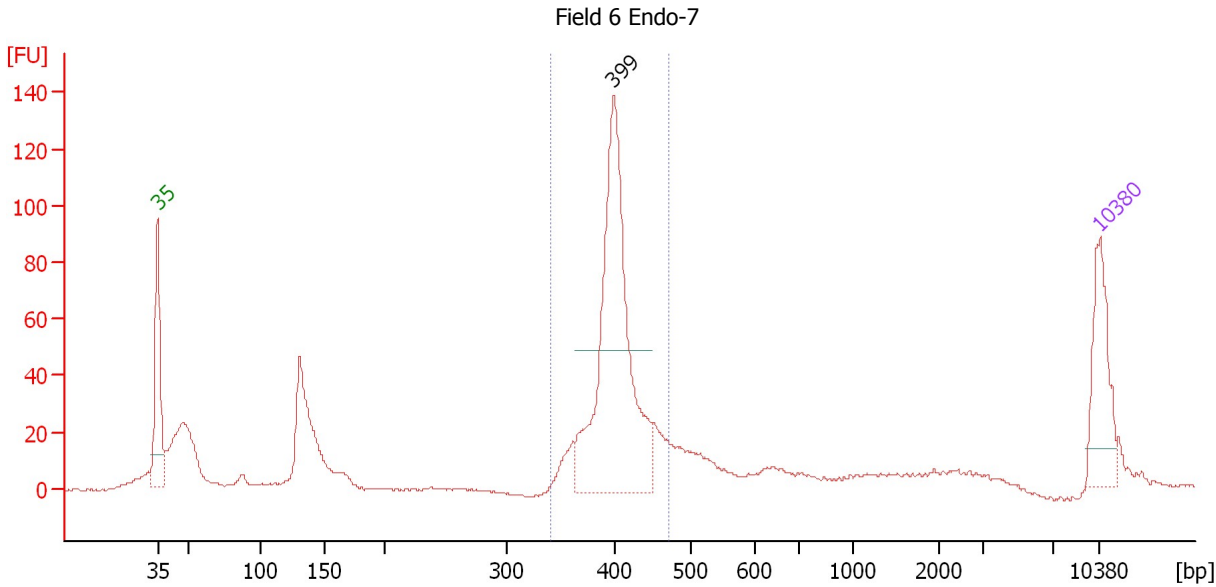
Region table for sample 4 : Field 6 BF-7

From [bp]	To [bp]	Average Size [bp]	Molarity [pmol/l]	Conc. [pg/μl]	Corr. Area	% of Total	Size distribution in CV [%]	Color
339	456	395	1,386.8	361.07	360.6	34	4.7	Blue

Assay Class: High Sensitivity DNA Assay
 Data Path: C:\...ents and Settings\Bioanalyzer\2013-10-21\2013-10-21_007.xad

Created: 10/21/2013 3:28:25 PM
 Modified: 10/21/2013 4:09:44 PM

Electropherogram Summary Continued ...



Setpoint Deviations for sample 5 : Field 6 Endo-7

Height Threshold [FU] : 50

Overall Results for sample 5 : Field 6 Endo-7

Number of peaks found: 1 Corr. Area 1: 464.9
 Noise: 0.3

Peak table for sample 5 : Field 6 Endo-7

Peak	Size [bp]	Conc. [pg/μl]	Molarity [pmol/l]	Observations
1	35	125.00	5,411.3	Lower Marker
2	399	422.99	1,607.3	
3	10,380	75.00	10.9	Upper Marker

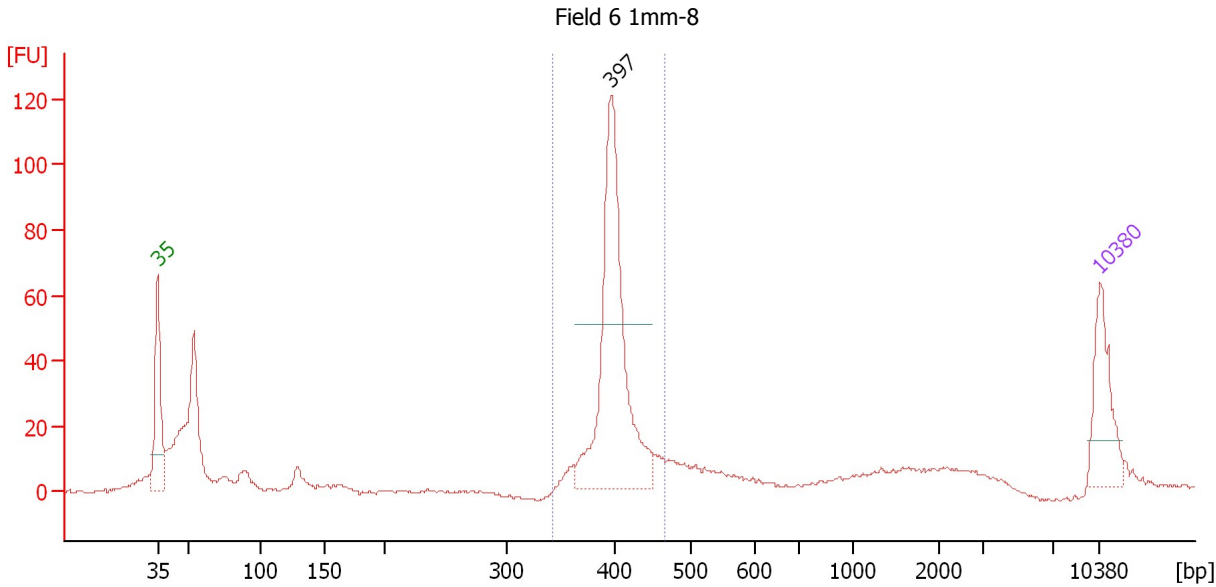
Region table for sample 5 : Field 6 Endo-7

From [bp]	To [bp]	Average Size [bp]	Molarity [pmol/l]	Conc. [pg/μl]	Corr. Area	% of Total	Size distribution in CV [%]	Color
340	469	403	1,735.9	460.62	464.9	50	6.0	Blue

Assay Class: High Sensitivity DNA Assay
 Data Path: C:\...ents and Settings\Bioanalyzer\2013-10-21\2013-10-21_007.xad

Created: 10/21/2013 3:28:25 PM
 Modified: 10/21/2013 4:09:44 PM

Electropherogram Summary Continued ...



Setpoint Deviations for sample 6 : Field 6 1mm-8

Height Threshold [FU] : 50

Overall Results for sample 6 : Field 6 1mm-8

Number of peaks found: 1 Corr. Area 1: 313.7
 Noise: 0.5

Peak table for sample 6 : Field 6 1mm-8

Peak	Size [bp]	Conc. [pg/μl]	Molarity [pmol/l]	Observations
1	35	125.00	5,411.3	Lower Marker
2	397	401.56	1,533.8	
3	10,380	75.00	10.9	Upper Marker

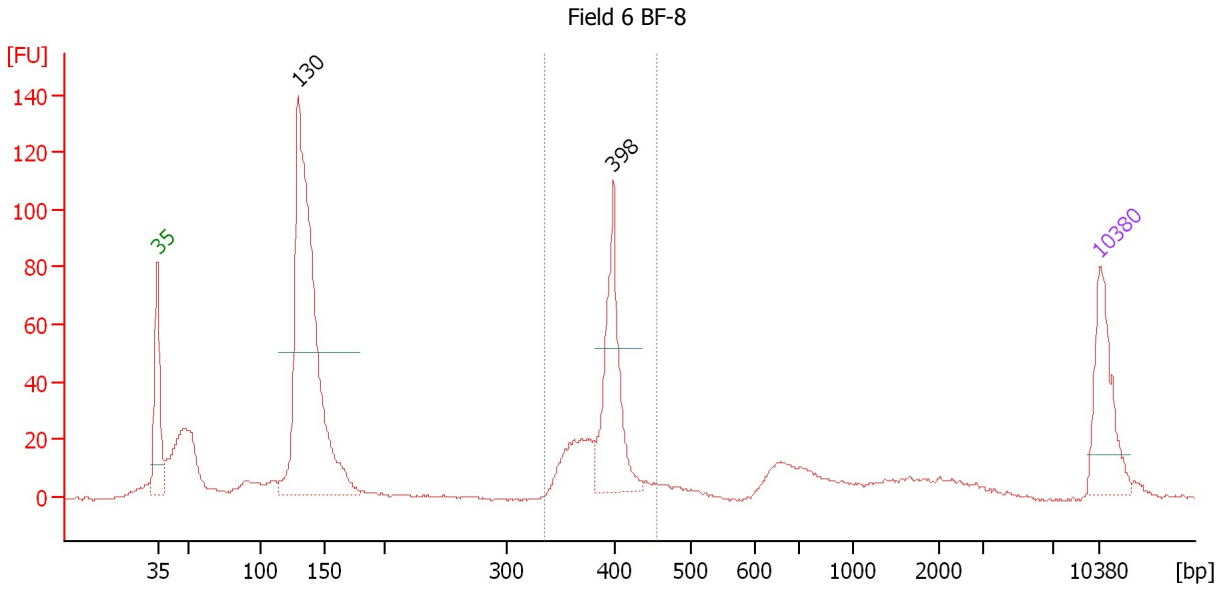
Region table for sample 6 : Field 6 1mm-8

From [bp]	To [bp]	Average Size [bp]	Molarity [pmol/l]	Conc. [pg/μl]	Corr. Area	% of Total	Size distribution in CV [%]	Color
343	465	402	1,607.2	425.12	313.7	50	5.0	Blue

Assay Class: High Sensitivity DNA Assay
 Data Path: C:\...ents and Settings\Bioanalyzer\2013-10-21\2013-10-21_007.xad

Created: 10/21/2013 3:28:25 PM
 Modified: 10/21/2013 4:09:44 PM

Electropherogram Summary Continued ...



Setpoint Deviations for sample 7 : Field 6 BF-8

Height Threshold [FU] : 50

Overall Results for sample 7 : Field 6 BF-8

Number of peaks found: 2 Corr. Area 1: 247.0
 Noise: 0.5

Peak table for sample 7 : Field 6 BF-8

Peak	Size [bp]	Conc. [pg/μl]	Molarity [pmol/l]	Observations
1	35	125.00	5,411.3	Lower Marker
2	130	653.21	7,626.2	
3	398	163.20	620.7	
4	10,380	75.00	10.9	Upper Marker

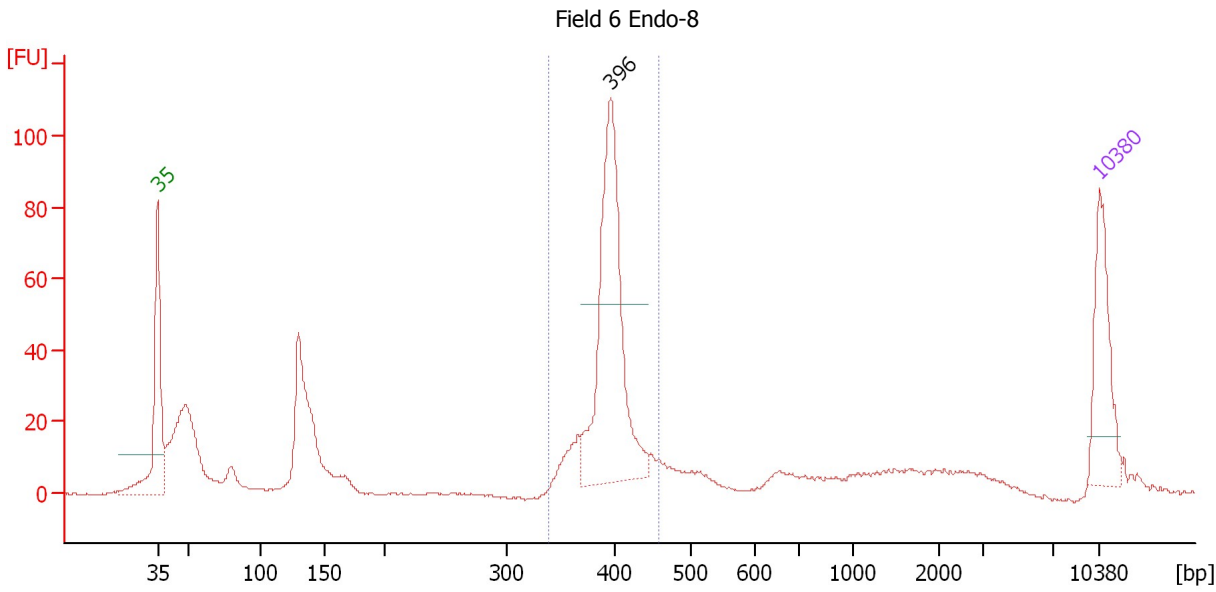
Region table for sample 7 : Field 6 BF-8

From [bp]	To [bp]	Average Size [bp]	Molarity [pmol/l]	Conc. [pg/μl]	Corr. Area	% of Total	Size distribution in CV [%]	Color
335	454	390	977.5	251.17	247.0	24	5.3	Blue

Assay Class: High Sensitivity DNA Assay
 Data Path: C:\...ents and Settings\Bioanalyzer\2013-10-21\2013-10-21_007.xad

Created: 10/21/2013 3:28:25 PM
 Modified: 10/21/2013 4:09:44 PM

Electropherogram Summary Continued ...



Setpoint Deviations for sample 8 : Field 6 Endo-8

Height Threshold [FU] : 50

Overall Results for sample 8 : Field 6 Endo-8

Number of peaks found: 1 Corr. Area 1: 322.8
 Noise: 0.3

Peak table for sample 8 : Field 6 Endo-8

Peak	Size [bp]	Conc. [pg/μl]	Molarity [pmol/l]	Observations
1	35	125.00	5,411.3	Lower Marker
2	396	300.44	1,149.5	
3	10,380	75.00	10.9	Upper Marker

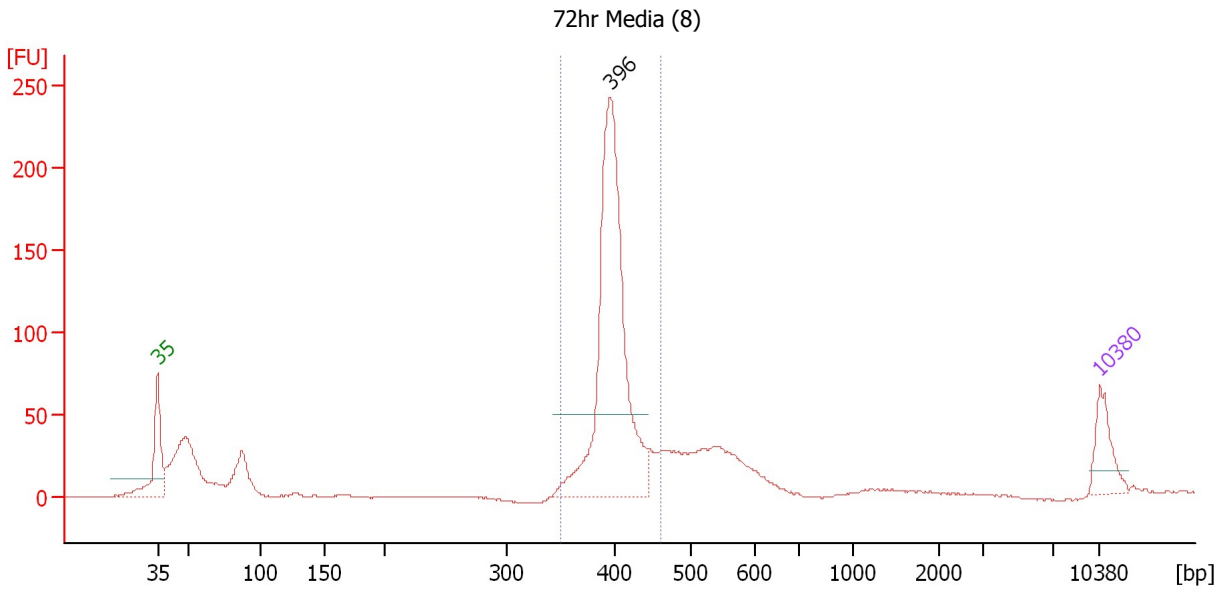
Region table for sample 8 : Field 6 Endo-8

From [bp]	To [bp]	Average Size [bp]	Molarity [pmol/l]	Conc. [pg/μl]	Corr. Area	% of Total	Size distribution in CV [%]	Color
339	457	396	1,393.6	363.46	322.8	46	5.0	Blue

Assay Class: High Sensitivity DNA Assay
 Data Path: C:\...ents and Settings\Bioanalyzer\2013-10-21\2013-10-21_007.xad

Created: 10/21/2013 3:28:25 PM
 Modified: 10/21/2013 4:09:44 PM

Electropherogram Summary Continued ...



Setpoint Deviations for sample 9 : 72hr Media (8)

Height Threshold [FU] : 50

Overall Results for sample 9 : 72hr Media (8)

Number of peaks found: 1 Corr. Area 1: 701.0
 Noise: 0.4

Peak table for sample 9 : 72hr Media (8)

Peak	Size [bp]	Conc. [pg/µl]	Molarity [pmol/l]	Observations
1	35	125.00	5,411.3	Lower Marker
2	396	917.82	3,515.4	
3	10,380	75.00	10.9	Upper Marker

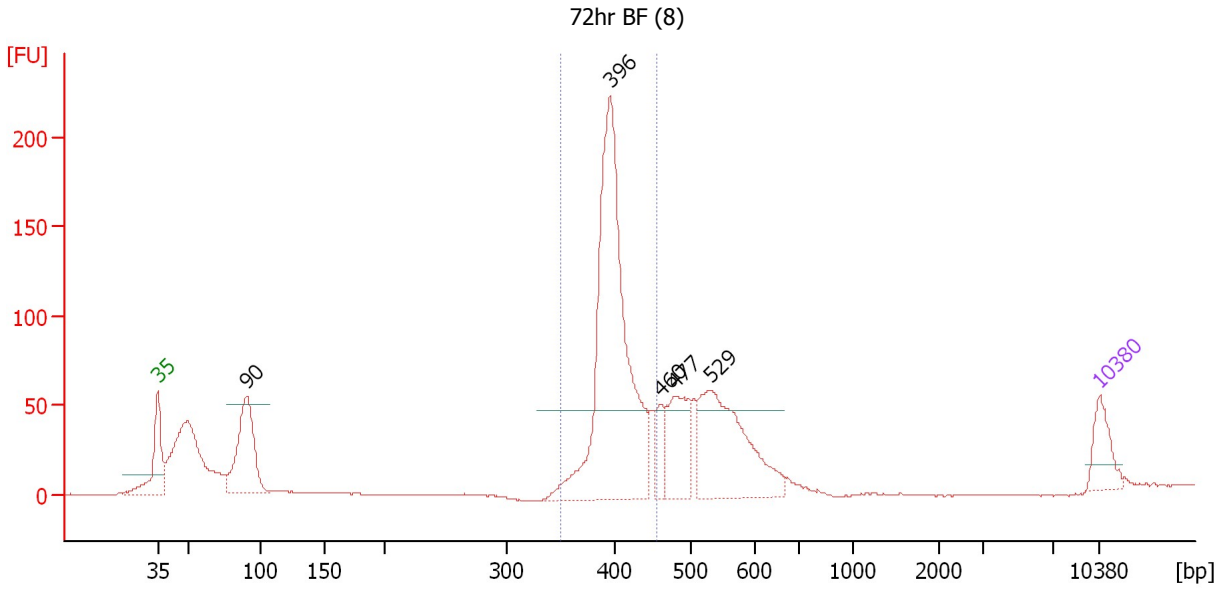
Region table for sample 9 : 72hr Media (8)

From [bp]	To [bp]	Average Size [bp]	Molarity [pmol/l]	Conc. [pg/µl]	Corr. Area	% of Total	Size distribution in CV [%]	Color
350	459	401	3,580.8	944.83	701.0	57	4.7	Blue

Assay Class: High Sensitivity DNA Assay
 Data Path: C:\...ents and Settings\Bioanalyzer\2013-10-21\2013-10-21_007.xad

Created: 10/21/2013 3:28:25 PM
 Modified: 10/21/2013 4:09:44 PM

Electropherogram Summary Continued ...



Setpoint Deviations for sample 10 : 72hr BF (8)

Height Threshold [FU] : 50

Overall Results for sample 10 : 72hr BF (8)

Number of peaks found: 5 Corr. Area 1: 674.5
 Noise: 0.3

Peak table for sample 10 : 72hr BF (8)

Peak	Size [bp]	Conc. [pg/μl]	Molarity [pmol/l]	Observations
1	35	125.00	5,411.3	Lower Marker
2	90	360.35	6,061.8	
3	396	1,119.92	4,287.7	
4	460	65.23	215.0	
5	477	212.01	673.0	
6	529	454.08	1,299.6	
7	10,380	75.00	10.9	Upper Marker

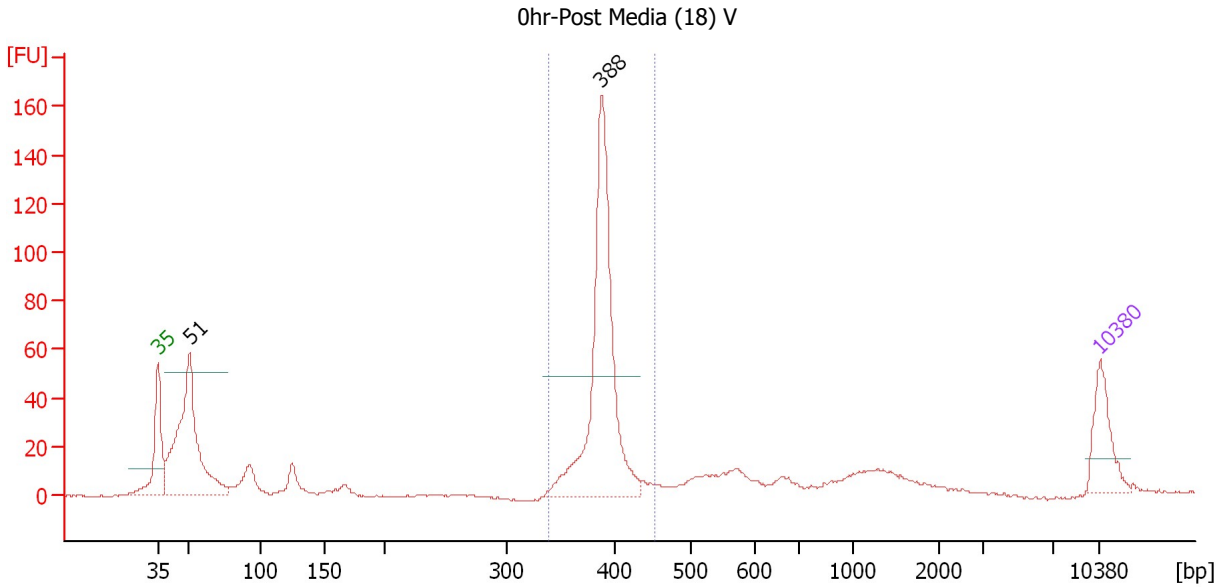
Region table for sample 10 : 72hr BF (8)

From [bp]	To [bp]	Average Size [bp]	Molarity [pmol/l]	Conc. [pg/μl]	Corr. Area	% of Total	Size distribution in CV [%]	Color
349	454	402	4,021.4	1,065.54	674.5	45	4.8	Blue

Assay Class: High Sensitivity DNA Assay
 Data Path: C:\...ents and Settings\Bioanalyzer\2013-10-21\2013-10-21_007.xad

Created: 10/21/2013 3:28:25 PM
 Modified: 10/21/2013 4:09:44 PM

Electropherogram Summary Continued ...



Setpoint Deviations for sample 11 : 0hr-Post Media (18) V

Height Threshold [FU] : 50

Overall Results for sample 11 : 0hr-Post Media (18) V

Number of peaks found: 2 Corr. Area 1: 331.7
 Noise: 0.4

Peak table for sample 11 : 0hr-Post Media (18) V

Peak	Size [bp]	Conc. [pg/μl]	Molarity [pmol/l]	Observations
1	35	125.00	5,411.3	Lower Marker
2	51	473.06	14,095.0	
3	388	556.90	2,176.9	
4	10,380	75.00	10.9	Upper Marker

Region table for sample 11 : 0hr-Post Media (18) V

From [bp]	To [bp]	Average Size [bp]	Molarity [pmol/l]	Conc. [pg/μl]	Corr. Area	% of Total	Size distribution in CV [%]	Color
339	452	389	2,054.4	526.67	331.7	49	3.7	Blue

Assay Class: High Sensitivity DNA Assay
Data Path: C:\...ents and Settings\Bioanalyzer\2013-10-21\2013-10-21_007.xad

Created: 10/21/2013 3:28:25 PM
Modified: 10/21/2013 4:09:44 PM

Gel Image

