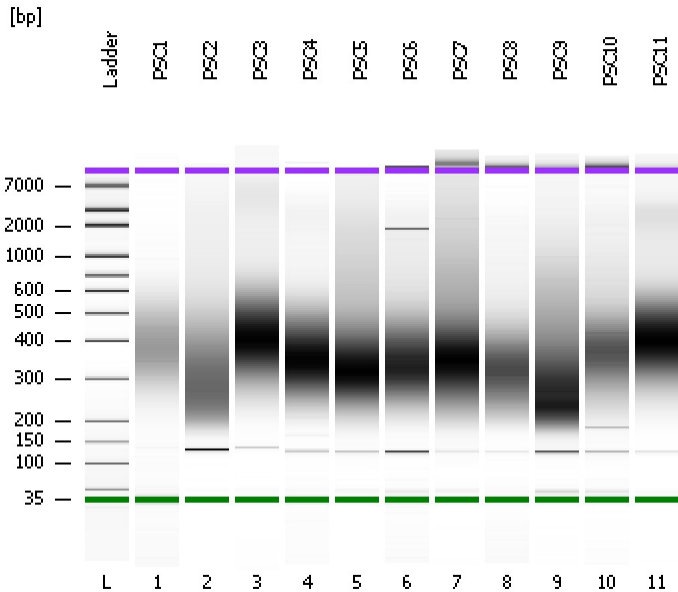


Assay Class: High Sensitivity DNA Assay  
Data Path: C:\...ents and Settings\Bioanalyzer\2013-10-21\2013-10-21\_008.xad

Created: 10/21/2013 4:28:52 PM  
Modified: 10/22/2013 9:49:01 AM

**Electrophoresis File Run Summary**



Instrument Information:

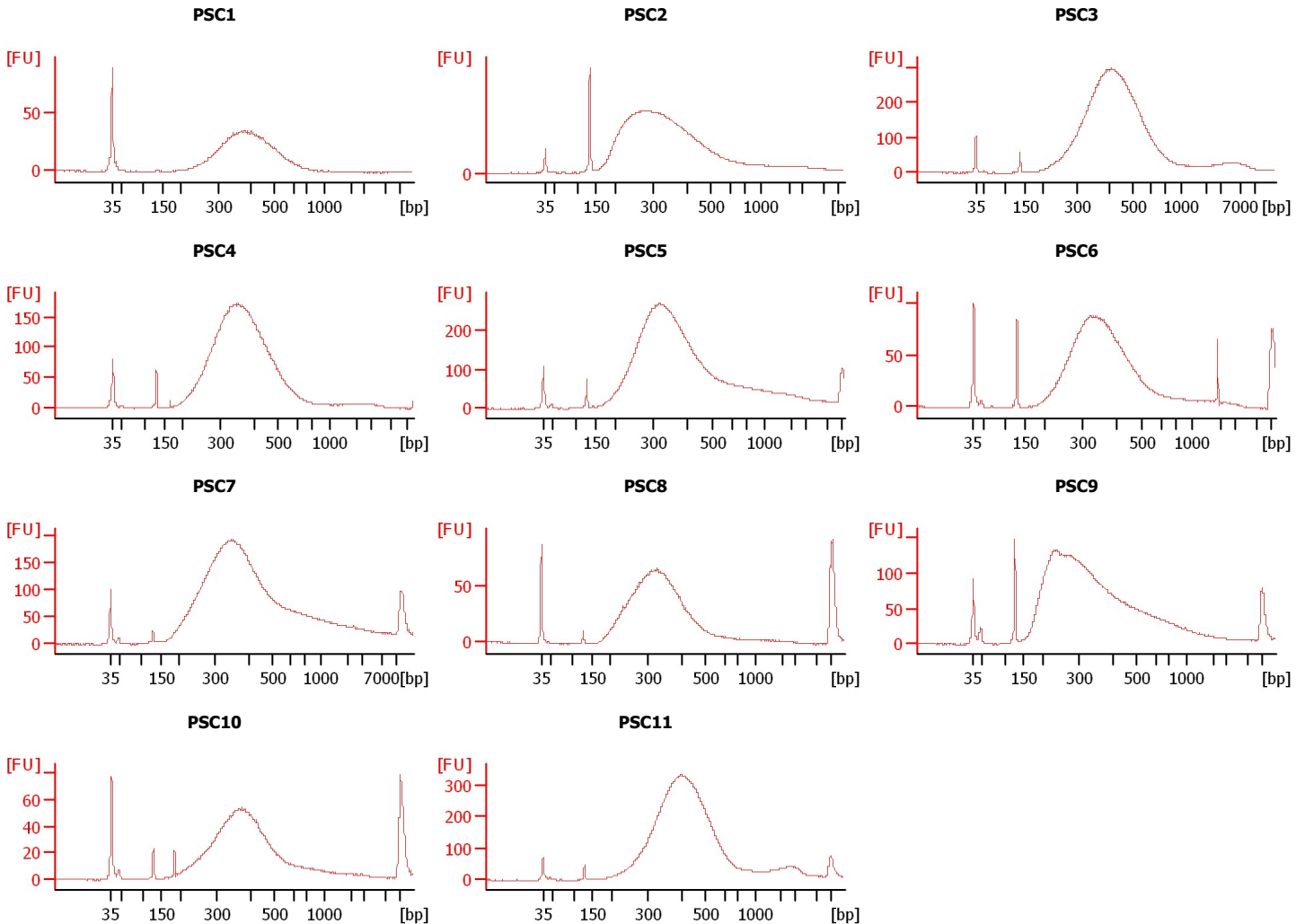
Instrument Name: DE13701086      Firmware: C.01.069  
Serial#: DE13701086      Type: G2938B

Assay Information:

Assay Origin Path: C:\Program Files\Agilent\2100 bioanalyzer\2100 expert\assays\dsDNA\High Sensitivity DNA.xsy  
Assay Class: High Sensitivity DNA Assay  
Version: 1.03  
Assay Comments: Copyright © 2003-2010 Agilent Technologies

Chip Information:

Chip Lot #:      Reagent Kit Lot #:      Chip Comments:



Assay Class: High Sensitivity DNA Assay  
Data Path: C:\...ents and Settings\Bioanalyzer\2013-10-21\2013-10-21\_008.xad

Created: 10/21/2013 4:28:52 PM  
Modified: 10/22/2013 9:49:01 AM

**Electrophoresis File Run Summary (Chip Summary)**

Sample Name	Sample Comment	Rest. Digest	Status	Observation	Result Label	Result Color
PSC1		<input type="checkbox"/>	✓			
PSC2		<input type="checkbox"/>	✓			
PSC3		<input type="checkbox"/>	✓			
PSC4		<input type="checkbox"/>	✓			
PSC5		<input type="checkbox"/>	✓			
PSC6		<input type="checkbox"/>	✓			
PSC7		<input type="checkbox"/>	✓			
PSC8		<input type="checkbox"/>	✓			
PSC9		<input type="checkbox"/>	✓			
PSC10		<input type="checkbox"/>	✓			
PSC11		<input type="checkbox"/>	✓			
Ladder		<input type="checkbox"/>	✓			

**Chip Lot #**

**Reagent Kit Lot #**

**Chip Comments :**

Assay Class: High Sensitivity DNA Assay  
Data Path: C:\...ents and Settings\Bioanalyzer\2013-10-21\2013-10-21\_008.xad

Created: 10/21/2013 4:28:52 PM  
Modified: 10/22/2013 9:49:01 AM

**Electrophoresis Assay Details**

**General Analysis Settings**

Number of Available Sample and Ladder Wells (Max.) : 12  
Minimum Visible Range [s] : 32  
Maximum Visible Range [s] : 138  
Start Analysis Time Range [s] : 33  
End Analysis Time Range [s] : 137.5  
Ladder Concentration [pg/μl] : 1950  
Uses Standard Area for Ladder Fragments  
Lower Marker Concentration [pg/μl] : 125  
Upper Marker Concentration [pg/μl] : 75  
Used Upper Marker for Quantitation  
Standard Curve Fit is Point to Point  
Show Data Aligned to Lower and Upper Marker

**Integrator Settings**

Integration Start Time [s] : 33.05  
Integration End Time [s] : 137  
Slope Threshold : 0.8  
Height Threshold [FU] : 5  
Area Threshold : 0.1  
Width Threshold [s] : 0.6  
Baseline Plateau [s] : 0.5

**Filter Settings**

Filter Width [s] : 0.5  
Polynomial Order : 4

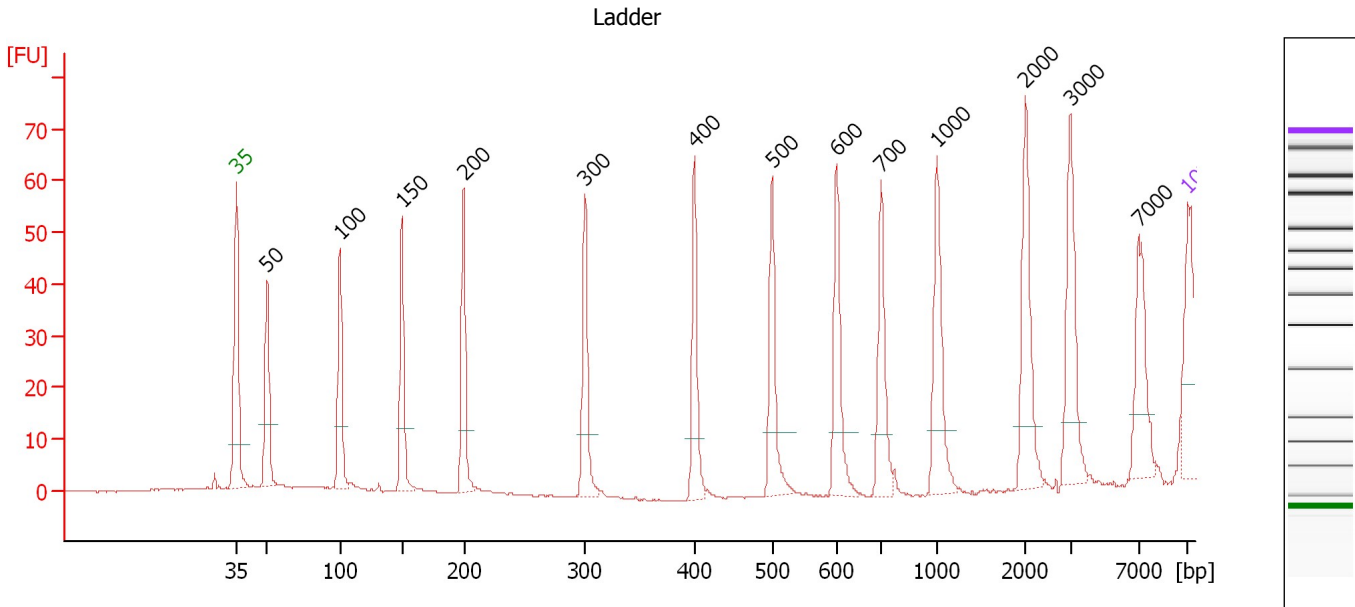
**Ladder**

Ladder Peak	Size	Area
1	35	160
2	50	210
3	100	208
4	150	221
5	200	242
6	300	270
7	400	305
8	500	306
9	600	336
10	700	321
11	1000	366
12	2000	413
13	3000	411
14	7000	400
15	10380	214

Assay Class: High Sensitivity DNA Assay  
 Data Path: C:\...ents and Settings\Bioanalyzer\2013-10-21\2013-10-21\_008.xad

Created: 10/21/2013 4:28:52 PM  
 Modified: 10/22/2013 9:49:01 AM

**Electropherogram Summary**



**Overall Results for Ladder**

Noise: 0.1

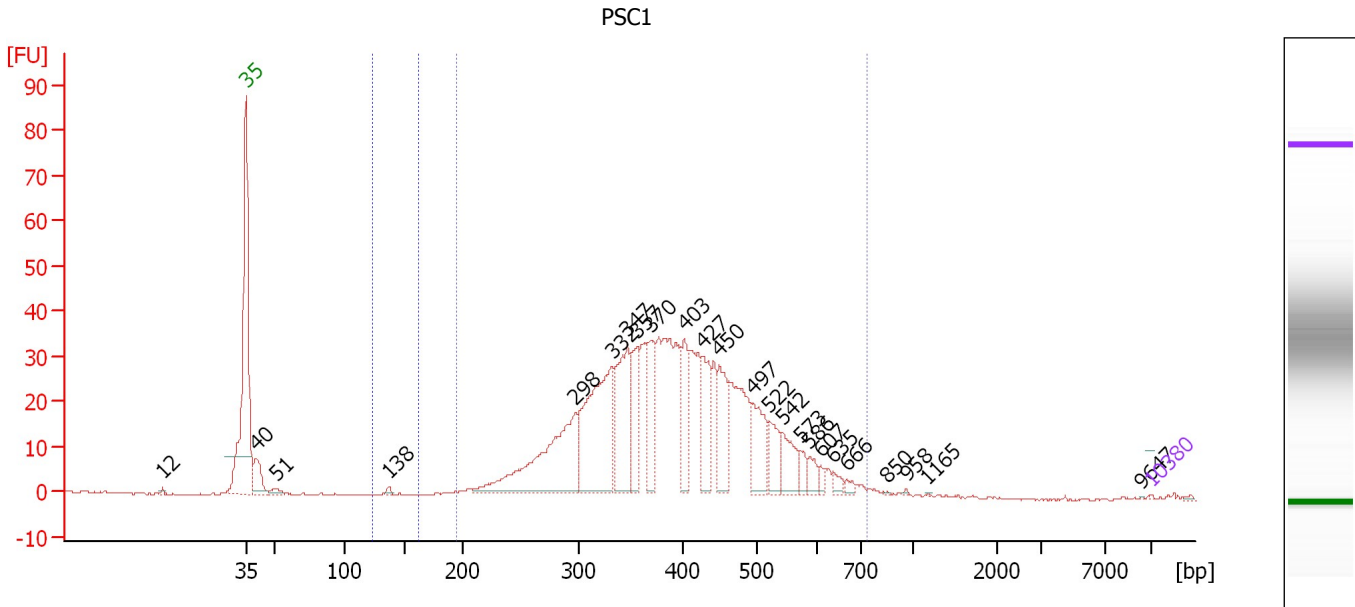
**Peak table for Ladder**

Peak	Size [bp]	Conc. [pg/μl]	Molarity [pmol/l]	Observations
1	35	125.00	5,411.3	Lower Marker
2	50	150.00	4,545.5	Ladder Peak
3	100	150.00	2,272.7	Ladder Peak
4	150	150.00	1,515.2	Ladder Peak
5	200	150.00	1,136.4	Ladder Peak
6	300	150.00	757.6	Ladder Peak
7	400	150.00	568.2	Ladder Peak
8	500	150.00	454.5	Ladder Peak
9	600	150.00	378.8	Ladder Peak
10	700	150.00	324.7	Ladder Peak
11	1,000	150.00	227.3	Ladder Peak
12	2,000	150.00	113.6	Ladder Peak
13	3,000	150.00	75.8	Ladder Peak
14	7,000	150.00	32.5	Ladder Peak
15	10,380	75.00	10.9	Upper Marker

Assay Class: High Sensitivity DNA Assay  
 Data Path: C:\...ents and Settings\Bioanalyzer\2013-10-21\2013-10-21\_008.xad

Created: 10/21/2013 4:28:52 PM  
 Modified: 10/22/2013 9:49:01 AM

**Electropherogram Summary Continued ...**



**Setpoint Deviations for sample 1 : PSC1**

Height Threshold [FU] : 0.5

**Overall Results for sample 1 : PSC1**

Number of peaks found: 25      Corr. Area 1: 726.9  
 Noise: 0.2      Corr. Area 2: 1.0

**Peak table for sample 1 : PSC1**


Peak	Size [bp]	Conc. [pg/μl]	Molarity [pmol/l]	Observations
1	12	0.00	0.0	
2	35	125.00	5,411.3	Lower Marker
3	40	6,354.26	239,212.9	
4	51	1,195.38	35,229.0	
5	138	551.10	6,067.9	
6	298	31,199.68	158,609.4	
7	332	31,113.96	141,788.3	
8	347	17,507.63	76,501.4	
9	357	9,074.95	38,522.0	
10	370	9,271.77	37,949.2	
11	403	7,893.06	29,711.4	
12	427	8,888.57	31,531.1	
13	450	9,258.05	31,202.8	
14	497	8,736.12	26,654.4	
15	522	4,786.29	13,894.2	
16	542	5,651.67	15,802.3	
17	573	1,918.62	5,072.3	
18	586	2,174.65	5,621.6	
19	607	1,034.55	2,580.3	
20	635	1,062.71	2,535.8	
21	666	736.60	1,675.2	
22	850	77.81	138.7	

Assay Class: High Sensitivity DNA Assay  
 Data Path: C:\...ents and Settings\Bioanalyzer\2013-10-21\2013-10-21\_008.xad



Created: 10/21/2013 4:28:52 PM  
 Modified: 10/22/2013 9:49:01 AM

### Electropherogram Summary Continued ...

#### ... Peak table for sample 1 : PSC1

Peak	Size [bp]	Conc. [pg/μl]	Molarity [pmol/l]	Observations
23	958	122.95	194.5	
24	1,165	48.66	63.3	
25	9,647	39.48	6.2	
26	 10,380	75.00	10.9	Upper Marker
27	14,197	0.00	0.0	

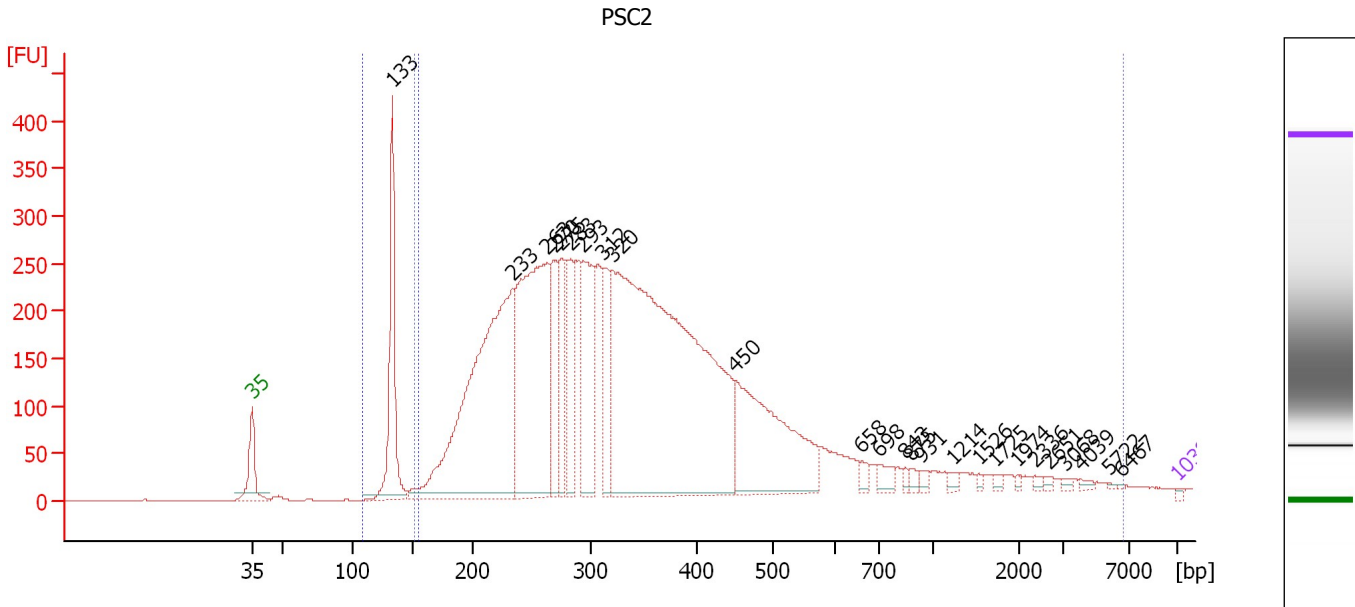
#### Region table for sample 1 : PSC1

From [bp]	To [bp]	Average Size [bp]	Molarity [pmol/l]	Conc. [pg/μl]	Corr. Area	% of Total	Size distribution in CV [%]	Color
123	162	138	4,931.3	449.17	1.0	0	1.9	
196	734	401	947,535.5	233,246.16	726.9	97	22.6	

Assay Class: High Sensitivity DNA Assay  
 Data Path: C:\...ents and Settings\Bioanalyzer\2013-10-21\2013-10-21\_008.xad

Created: 10/21/2013 4:28:52 PM  
 Modified: 10/22/2013 9:49:01 AM

**Electropherogram Summary Continued ...**



**Overall Results for sample 2 : PSC2**

Number of peaks found: 25                      Corr. Area 1: 7,720.6  
 Noise: 0.4    Corr. Area 2: 381.3

**Peak table for sample 2 : PSC2**


Peak	Size [bp]	Conc. [pg/μl]	Molarity [pmol/l]	Observations
1	35	125.00	5,411.3	Lower Marker
2	133	8,183.29	93,310.7	
3	233	25,365.70	164,763.8	
4	263	17,946.78	103,515.1	
5	270	4,189.73	23,517.4	
6	275	3,613.61	19,916.2	
7	283	4,083.03	21,890.5	
8	293	7,050.12	36,398.7	
9	312	3,655.46	17,765.3	
10	320	42,810.29	202,545.8	
11	450	10,318.18	34,709.8	
12	658	404.72	932.1	
13	698	631.74	1,370.9	
14	843	198.02	356.1	
15	875	254.98	441.6	
16	931	248.03	403.8	
17	1,214	225.68	281.6	
18	1,526	119.09	118.3	
19	1,725	148.84	130.7	
20	1,974	96.19	73.8	
21	2,336	128.74	83.5	
22	2,651	101.46	58.0	
23	3,068	109.22	53.9	
24	4,039	126.52	47.5	
25	5,722	48.06	12.7	
26	6,467	28.72	6.7	

Assay Class: High Sensitivity DNA Assay  
 Data Path: C:\...ents and Settings\Bioanalyzer\2013-10-21\2013-10-21\_008.xad



Created: 10/21/2013 4:28:52 PM  
 Modified: 10/22/2013 9:49:01 AM

### Electropherogram Summary Continued ...

#### ... Peak table for sample 2 : PSC2

Peak	Size [bp]	Conc. [pg/ $\mu$ l]	Molarity [pmol/l]	Observations
27	 10,380	75.00	10.9	Upper Marker

#### Region table for sample 2 : PSC2

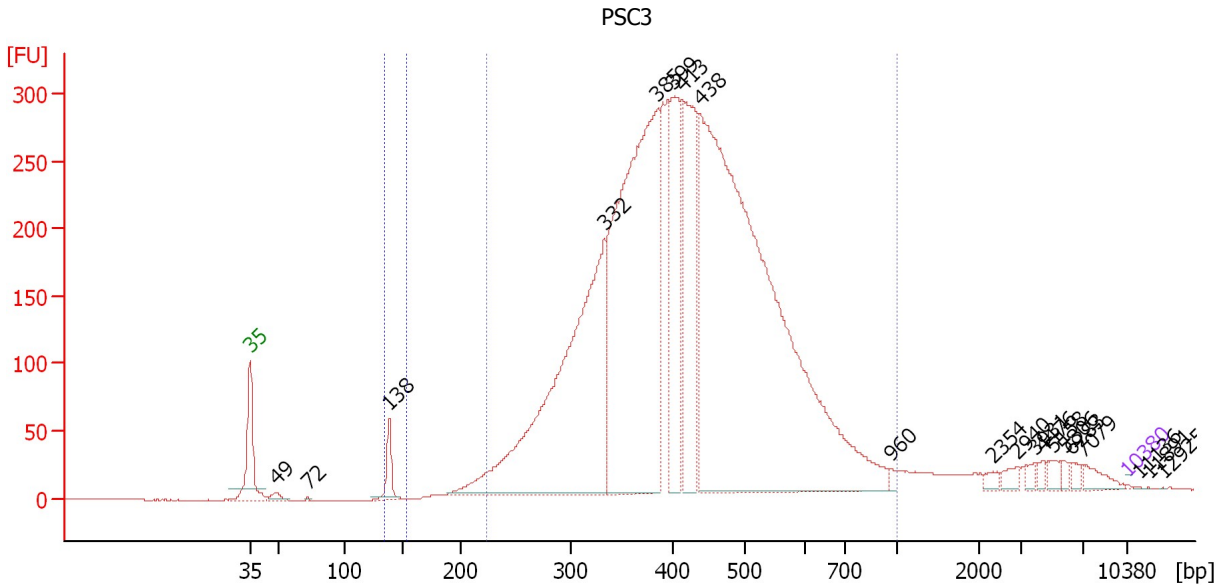
From [bp]	To [bp]	Average Size [bp]	Molarity [pmol/l]	Conc. [pg/ $\mu$ l]	Corr. Area	% of Total	Size distribution in CV [%]	Color
108	154	133	91,786.9	8,076.48	381.3	5	3.1	
151	6,669	416	647,026.4	128,303.01	7,720.6	95	100.0	



Assay Class: High Sensitivity DNA Assay  
 Data Path: C:\...ents and Settings\Bioanalyzer\2013-10-21\2013-10-21\_008.xad

Created: 10/21/2013 4:28:52 PM  
 Modified: 10/22/2013 9:49:01 AM

**Electropherogram Summary Continued ...**



**Setpoint Deviations for sample 3 : PSC3**

Height Threshold [FU] : 1

**Overall Results for sample 3 : PSC3**

Number of peaks found: 20                      Corr. Area 1: 6,109.3  
 Noise: 0.3                                      Corr. Area 2: 41.2



**Peak table for sample 3 : PSC3**

Peak	Size [bp]	Conc. [pg/μl]	Molarity [pmol/l]	Observations
1	35	125.00	5,411.3	Lower Marker
2	49	1,264.27	39,354.4	
3	72	132.79	2,799.5	
4	138	5,094.98	55,871.1	
5	332	94,696.65	431,541.7	
6	385	107,308.20	422,846.7	
7	399	26,102.14	99,064.1	
8	413	34,944.48	128,173.6	
9	438	185,271.70	641,311.6	
10	960	668.54	1,054.6	
11	2,354	964.26	620.6	
12	2,940	1,293.00	666.3	
13	3,931	839.46	323.6	
14	4,476	659.90	223.4	
15	5,158	1,223.40	359.4	
16	5,806	680.81	177.7	
17	6,283	930.13	224.3	
18	7,079	1,984.22	424.7	
19	10,380	75.00	10.9	Upper Marker
20	11,136	0.00	0.0	
21	11,891	0.00	0.0	
22	12,925	0.00	0.0	

Assay Class: High Sensitivity DNA Assay  
Data Path: C:\...ents and Settings\Bioanalyzer\2013-10-21\2013-10-21\_008.xad

Created: 10/21/2013 4:28:52 PM  
Modified: 10/22/2013 9:49:01 AM

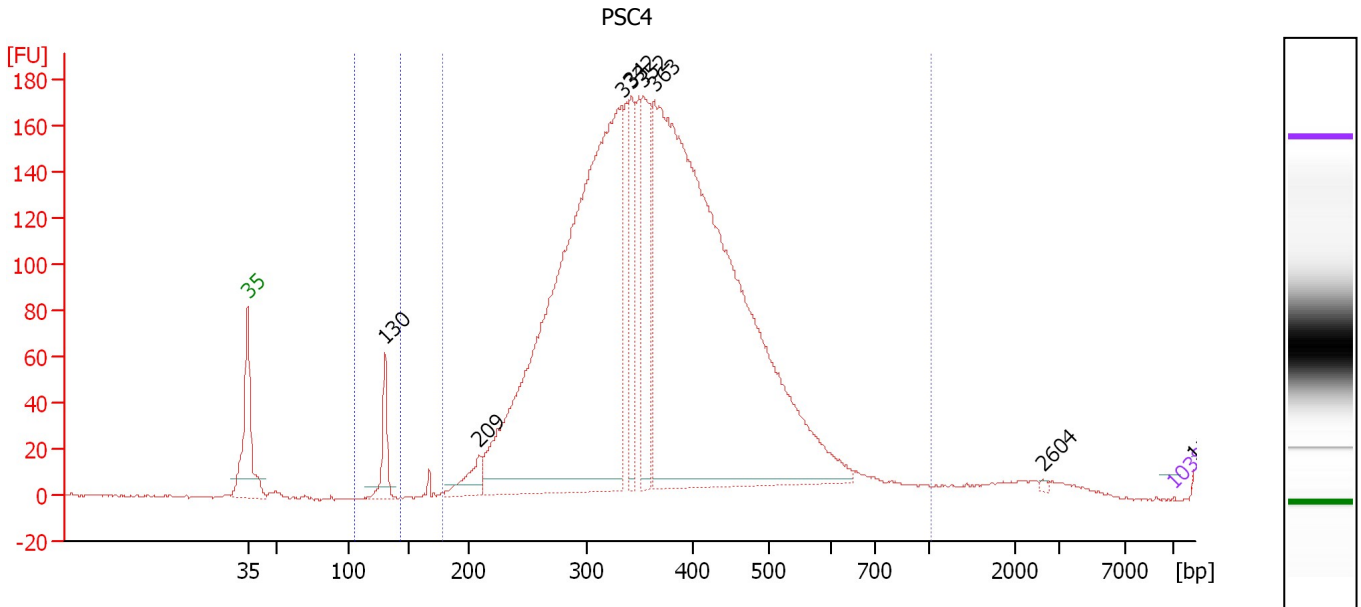
**Electropherogram Summary Continued ...****... Region table for sample 3 : PSC3**

<b>From [bp]</b>	<b>To [bp]</b>	<b>Average Size [bp]</b>	<b>Molarity [pmol/l]</b>	<b>Conc. [pg/μl]</b>	<b>Corr. Area</b>	<b>% of Total</b>	<b>Size distribution in CV [%]</b>	<b>Color</b>
134	154	138	47,629.8	4,344.55	41.2	1	1.2	
224	1,000	431	1,808,285.3	472,523.53	6,109.3	95	25.7	

Assay Class: High Sensitivity DNA Assay  
 Data Path: C:\...ents and Settings\Bioanalyzer\2013-10-21\2013-10-21\_008.xad

Created: 10/21/2013 4:28:52 PM  
 Modified: 10/22/2013 9:49:01 AM

**Electropherogram Summary Continued ...**



**Overall Results for sample 4 : PSC4**

Number of peaks found: 8                      Corr. Area 1: 3,839.2  
 Noise: 0.3                                      Corr. Area 2: 50.3

**Peak table for sample 4 : PSC4**

Peak	Size [bp]	Conc. [pg/μl]	Molarity [pmol/l]	Observations
1	35	125.00	5,411.3	Lower Marker
2	130	15,186.96	176,794.2	
3	209	10,154.47	73,720.7	
4	333	301,129.00	1,370,085.5	
5	342	29,176.54	129,264.7	
6	352	40,544.26	174,292.5	
7	363	349,090.91	1,455,386.5	
8	2,604	500.78	291.4	
9	10,380	75.00	10.9	Upper Marker
10	11,814	0.00	0.0	

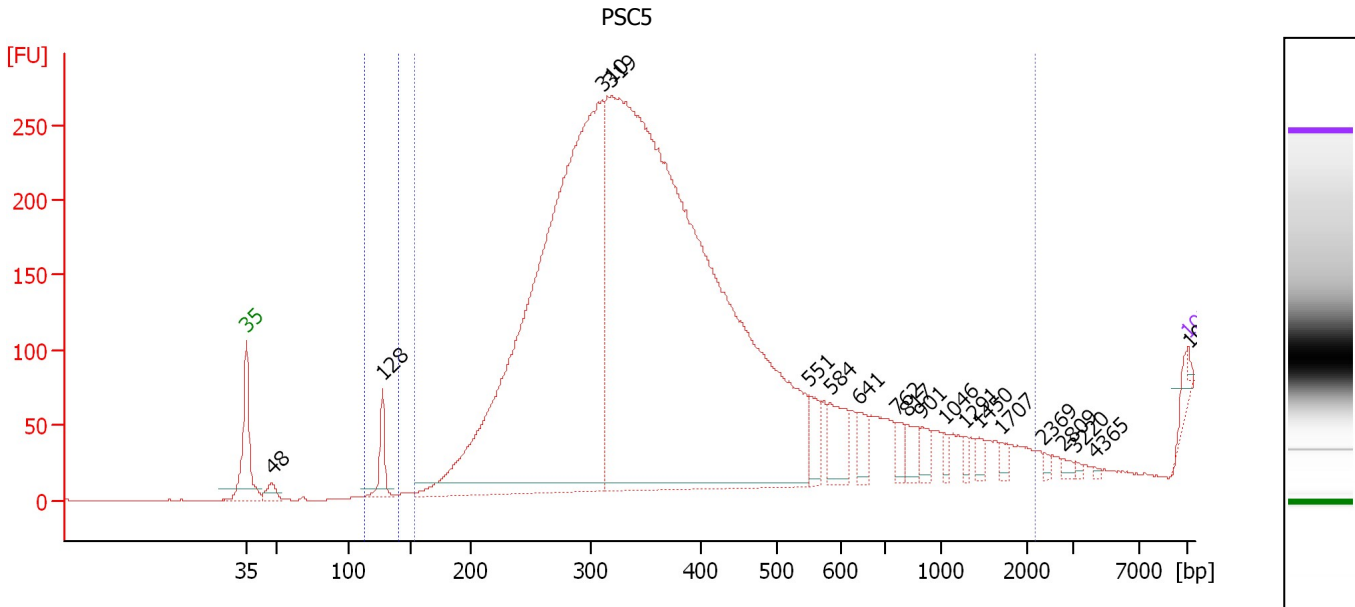
**Region table for sample 4 : PSC4**

From [bp]	To [bp]	Average Size [bp]	Molarity [pmol/l]	Conc. [pg/μl]	Corr. Area	% of Total	Size distribution in CV [%]	Color
105	143	130	162,528.7	13,936.28	50.3	1	1.7	Blue
178	1,010	374	3,541,773.5	803,555.19	3,839.2	96	26.3	Dark Blue

Assay Class: High Sensitivity DNA Assay  
 Data Path: C:\...ents and Settings\Bioanalyzer\2013-10-21\2013-10-21\_008.xad

Created: 10/21/2013 4:28:52 PM  
 Modified: 10/22/2013 9:49:01 AM

**Electropherogram Summary Continued ...**



**Overall Results for sample 5 : PSC5**

Number of peaks found: 19                      Corr. Area 1: 4,165.6  
 Noise: 0.3    Corr. Area 2: 23.3

**Peak table for sample 5 : PSC5**

Peak	Size [bp]	Conc. [pg/μl]	Molarity [pmol/l]	Observations
1	35	125.00	5,411.3	Lower Marker
2	48	120.52	3,824.0	
3	128	273.47	3,242.5	
4	310	8,198.47	40,018.7	
5	319	12,537.05	59,596.6	
6	551	193.20	531.7	
7	584	286.63	743.7	
8	641	139.77	330.6	
9	762	89.85	178.6	
10	817	115.33	213.9	
11	901	103.82	174.7	
12	1,046	54.75	79.3	
13	1,291	41.48	48.7	
14	1,450	61.87	64.6	
15	1,707	44.70	39.7	
16	2,369	20.64	13.2	
17	2,809	28.02	15.1	
18	3,220	13.65	6.4	
19	4,365	11.33	3.9	
20	10,380	75.00	10.9	Upper Marker
21	10,491	0.00	0.0	

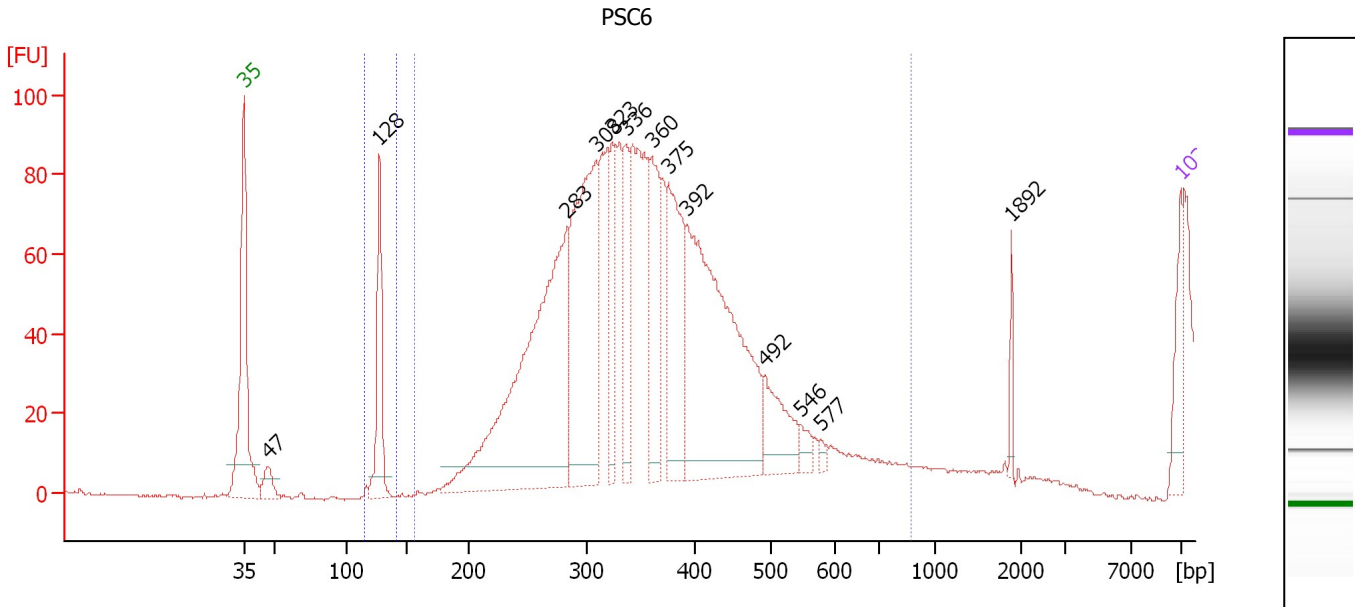
**Region table for sample 5 : PSC5**

From [bp]	To [bp]	Average Size [bp]	Molarity [pmol/l]	Conc. [pg/μl]	Corr. Area	% of Total	Size distribution in CV [%]	Color
112	140	128	1,213.0	102.10	23.3	1	0.7	Blue
154	2,181	334	67,148.7	14,134.76	4,165.6	99	18.5	Dark Blue

Assay Class: High Sensitivity DNA Assay  
 Data Path: C:\...ents and Settings\Bioanalyzer\2013-10-21\2013-10-21\_008.xad

Created: 10/21/2013 4:28:52 PM  
 Modified: 10/22/2013 9:49:01 AM

**Electropherogram Summary Continued ...**



**Overall Results for sample 6 : PSC6**

Number of peaks found: 13                      Corr. Area 1: 779.7  
 Noise: 0.3    Corr. Area 2: 39.1

**Peak table for sample 6 : PSC6**

Peak	Size [bp]	Conc. [pg/μl]	Molarity [pmol/l]	Observations
1	35	125.00	5,411.3	Lower Marker
2	47	60.69	1,955.5	
3	128	264.69	3,144.4	
4	283	1,168.27	6,246.0	
5	308	731.27	3,593.6	
6	323	186.37	873.9	
7	336	179.22	807.2	
8	360	280.65	1,180.9	
9	375	362.37	1,462.7	
10	392	926.35	3,579.4	
11	492	161.99	499.1	
12	546	33.11	91.8	
13	577	11.71	30.7	
14	1,892	28.13	22.5	
15	10,380	75.00	10.9	Upper Marker

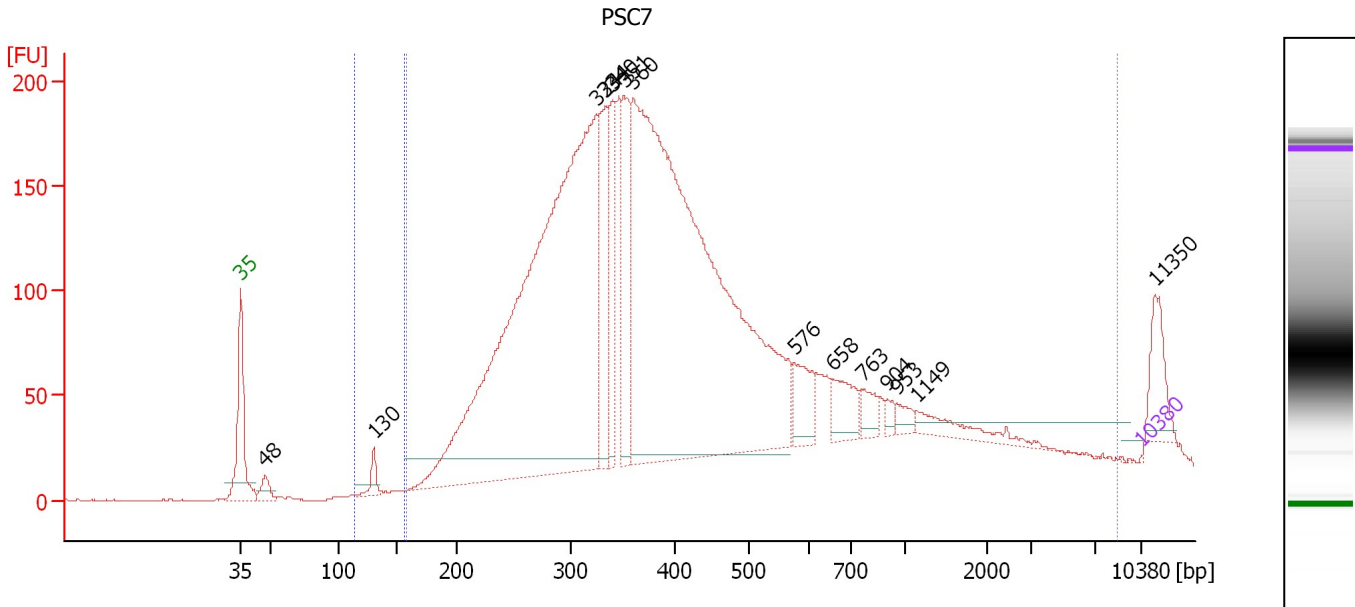
**Region table for sample 6 : PSC6**

From [bp]	To [bp]	Average Size [bp]	Molarity [pmol/l]	Conc. [pg/μl]	Corr. Area	% of Total	Size distribution in CV [%]	Color
115	141	128	1,684.5	141.79	39.1	5	0.9	Blue
157	877	334	10,025.9	2,166.89	779.7	95	12.9	Dark Blue

Assay Class: High Sensitivity DNA Assay  
 Data Path: C:\...ents and Settings\Bioanalyzer\2013-10-21\2013-10-21\_008.xad

Created: 10/21/2013 4:28:52 PM  
 Modified: 10/22/2013 9:49:01 AM

**Electropherogram Summary Continued ...**



**Setpoint Deviations for sample 7 : PSC7**

Baseline Plateau [s] : 1

**Overall Results for sample 7 : PSC7**

Number of peaks found: 14  
 Noise: 0.2  
 Corr. Area 1: 4,907.8  
 Corr. Area 2: 13.2

**Peak table for sample 7 : PSC7**

Peak	Size [bp]	Conc. [pg/μl]	Molarity [pmol/l]	Observations
1	35	125.00	5,411.3	Lower Marker
2	48	1,775.59	56,307.1	
3	130	1,623.19	18,964.9	
4	324	99,113.34	463,058.3	
5	334	11,133.89	50,579.0	
6	340	8,675.30	38,638.4	
7	351	10,310.05	44,446.3	
8	360	102,439.71	430,933.1	
9	576	3,904.51	10,273.5	
10	658	3,468.28	7,983.9	
11	763	1,721.12	3,419.8	
12	904	619.01	1,037.1	
13	953	1,021.45	1,624.7	
14	1,149	2,886.70	3,806.9	
15	10,380	75.00	10.9	Upper Marker
16	11,350	0.00	0.0	

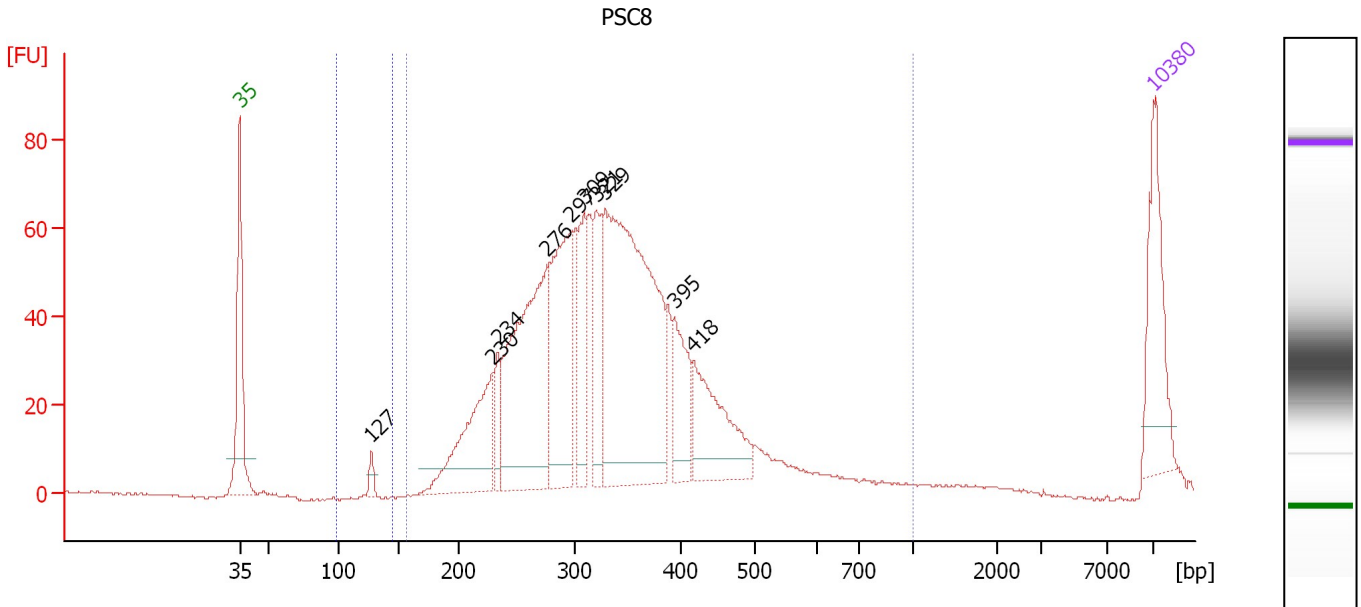
**Region table for sample 7 : PSC7**

From [bp]	To [bp]	Average Size [bp]	Molarity [pmol/l]	Conc. [pg/μl]	Corr. Area	% of Total	Size distribution in CV [%]	Color
114	156	130	11,996.9	1,027.66	13.2	0	1.1	Blue
159	8,599	505	1,225,276.5	285,120.91	4,907.8	97	100.0	Dark Blue

Assay Class: High Sensitivity DNA Assay  
 Data Path: C:\...ents and Settings\Bioanalyzer\2013-10-21\2013-10-21\_008.xad

Created: 10/21/2013 4:28:52 PM  
 Modified: 10/22/2013 9:49:01 AM

**Electropherogram Summary Continued ...**



**Overall Results for sample 8 : PSC8**

Number of peaks found: 10      Corr. Area 1: 1,372.4  
 Noise: 0.4      Corr. Area 2: 5.7

**Peak table for sample 8 : PSC8**

Peak	Size [bp]	Conc. [pg/μl]	Molarity [pmol/l]	Observations
1	35	125.00	5,411.3	Lower Marker
2	127	12.52	149.2	
3	230	149.01	983.5	
4	234	34.88	225.7	
5	276	301.22	1,654.6	
6	297	178.86	912.7	
7	309	81.70	400.3	
8	321	72.43	342.1	
9	329	457.32	2,106.6	
10	395	71.71	275.4	
11	418	112.79	408.7	
12	10,380	75.00	10.9	Upper Marker

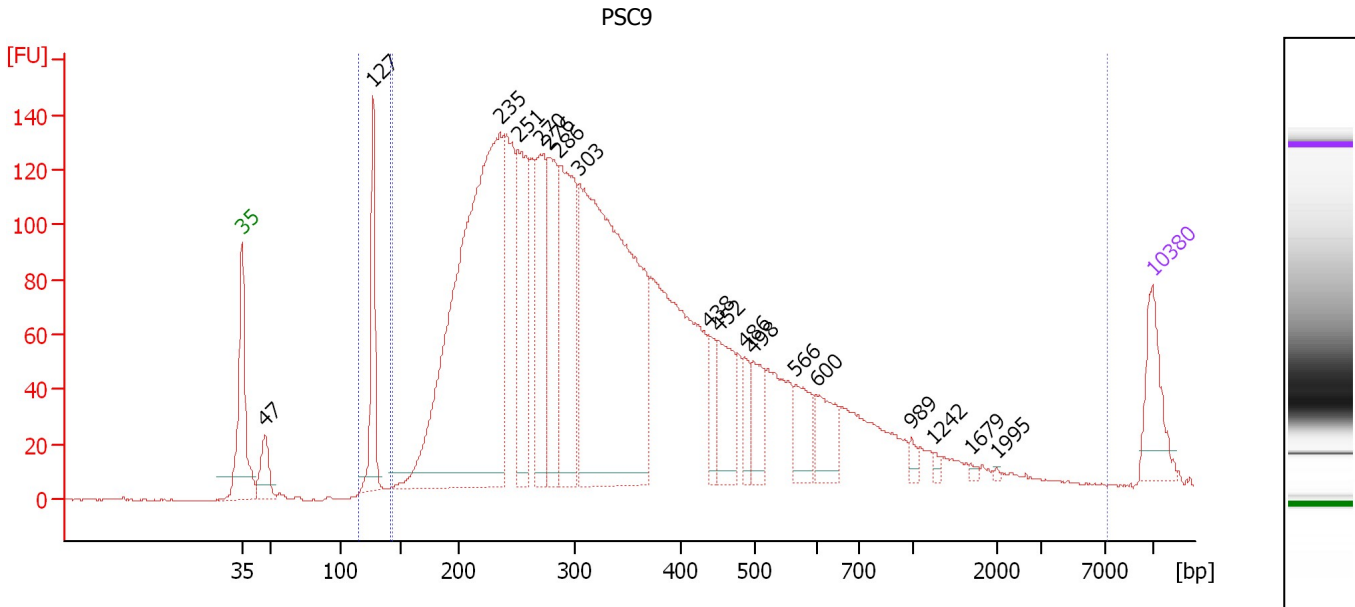
**Region table for sample 8 : PSC8**

From [bp]	To [bp]	Average Size [bp]	Molarity [pmol/l]	Conc. [pg/μl]	Corr. Area	% of Total	Size distribution in CV [%]	Color
99	146	127	104.7	8.78	5.7	0	1.0	Blue
157	1,000	336	8,034.2	1,648.29	1,372.4	99	25.0	Dark Blue

Assay Class: High Sensitivity DNA Assay  
 Data Path: C:\...ents and Settings\Bioanalyzer\2013-10-21\2013-10-21\_008.xad

Created: 10/21/2013 4:28:52 PM  
 Modified: 10/22/2013 9:49:01 AM

**Electropherogram Summary Continued ...**



**Overall Results for sample 9 : PSC9**

Number of peaks found: 18                      Corr. Area 1: 3,953.1  
 Noise: 0.2    Corr. Area 2: 115.5

**Peak table for sample 9 : PSC9**

Peak	Size [bp]	Conc. [pg/μl]	Molarity [pmol/l]	Observations
1	35	125.00	5,411.3	Lower Marker
2	47	77.46	2,492.3	
3	127	186.48	2,223.6	
4	235	1,297.63	8,369.5	
5	251	294.09	1,778.5	
6	270	244.86	1,374.8	
7	276	237.96	1,304.9	
8	286	354.33	1,877.4	
9	303	1,067.90	5,335.1	
10	438	56.31	194.7	
11	452	114.09	382.5	
12	486	43.16	134.6	
13	498	70.89	215.7	
14	566	74.00	198.2	
15	600	71.34	180.0	
16	989	11.72	18.0	
17	1,242	6.14	7.5	
18	1,679	4.62	4.2	
19	1,995	2.28	1.7	
20	10,380	75.00	10.9	Upper Marker

**Region table for sample 9 : PSC9**

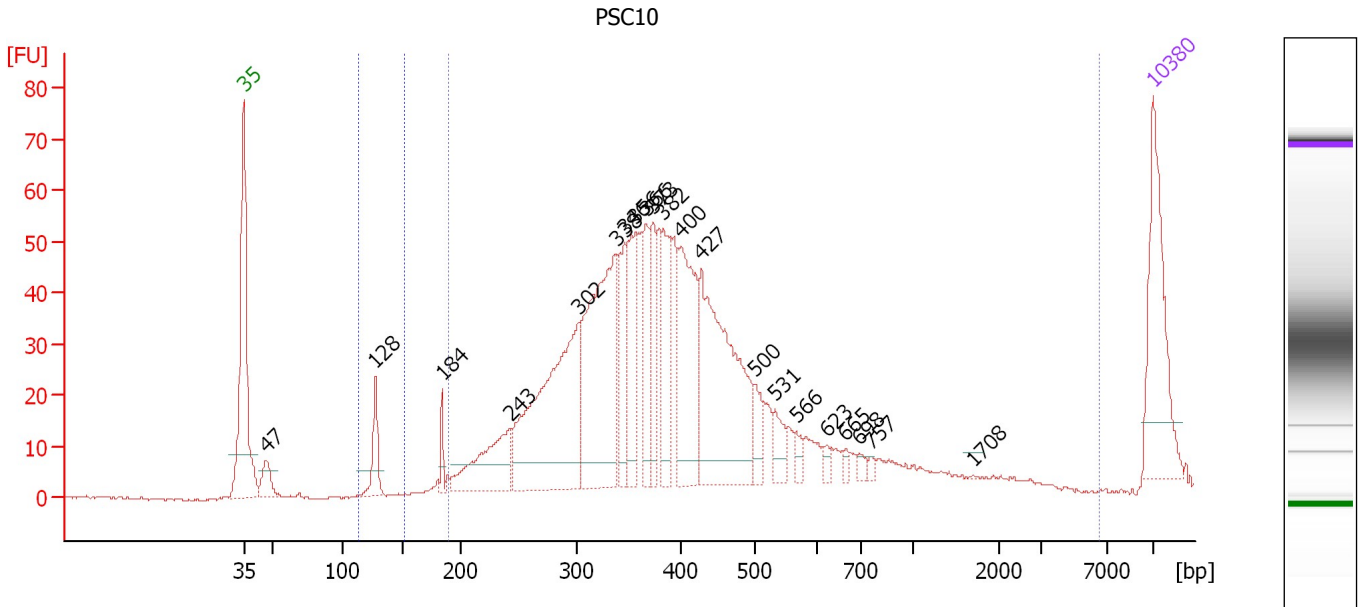
From [bp]	To [bp]	Average Size [bp]	Molarity [pmol/l]	Conc. [pg/μl]	Corr. Area	% of Total	Size distribution in CV [%]	Color
115	141	127	2,381.3	199.57	115.5	3	2.3	Blue
144	7,056	383	27,644.9	5,353.39	3,953.1	96	68.1	Dark Blue



Assay Class: High Sensitivity DNA Assay  
 Data Path: C:\...ents and Settings\Bioanalyzer\2013-10-21\2013-10-21\_008.xad

Created: 10/21/2013 4:28:52 PM  
 Modified: 10/22/2013 9:49:01 AM

**Electropherogram Summary Continued ...**



**Setpoint Deviations for sample 10 : PSC10**

Baseline Plateau [s] : 1

**Overall Results for sample 10 : PSC10**

Number of peaks found: 21      Corr. Area 1: 1,118.3  
 Noise: 0.3      Corr. Area 2: 18.4

**Peak table for sample 10 : PSC10**


Peak	Size [bp]	Conc. [pg/μl]	Molarity [pmol/l]	Observations
1	35	125.00	5,411.3	Lower Marker
2	47	23.46	759.2	
3	128	35.71	423.9	
4	184	12.15	100.1	
5	243	78.99	491.6	
6	302	232.55	1,166.2	
7	338	206.79	926.6	
8	346	60.10	263.4	
9	356	69.02	293.8	
10	366	51.35	212.5	
11	373	47.02	191.2	
12	382	61.95	245.5	
13	400	114.01	432.4	
14	427	198.59	705.1	
15	500	20.03	60.8	
16	531	18.48	52.7	
17	566	8.37	22.4	
18	623	5.97	14.5	
19	665	4.23	9.6	
20	698	5.41	11.8	
21	757	3.31	6.6	
22	1,708	0.33	0.3	

Assay Class: High Sensitivity DNA Assay  
 Data Path: C:\...ents and Settings\Bioanalyzer\2013-10-21\2013-10-21\_008.xad



Created: 10/21/2013 4:28:52 PM  
 Modified: 10/22/2013 9:49:01 AM

### Electropherogram Summary Continued ...

#### ... Peak table for sample 10 : PSC10

Peak	Size [bp]	Conc. [pg/μl]	Molarity [pmol/l]	Observations
23	 10,380	75.00	10.9	Upper Marker

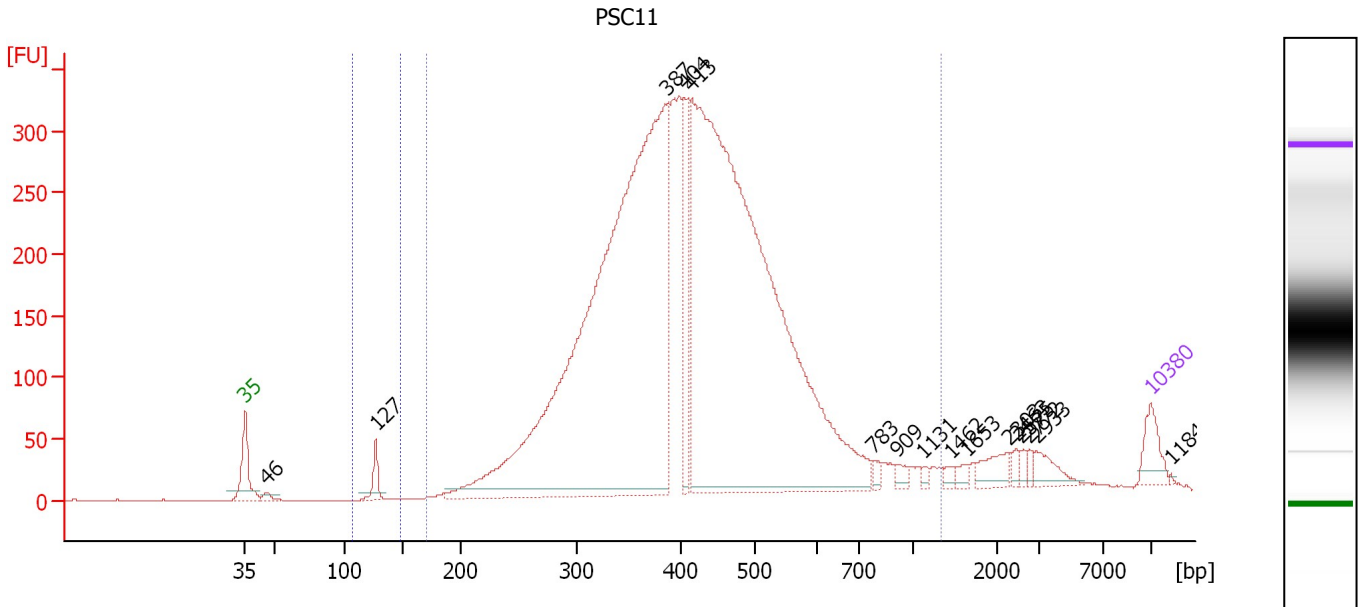
#### Region table for sample 10 : PSC10

From [bp]	To [bp]	Average Size [bp]	Molarity [pmol/l]	Conc. [pg/μl]	Corr. Area	% of Total	Size distribution in CV [%]	Color
113	153	128	373.0	31.42	18.4	2	1.6	
190	6,595	410	6,008.0	1,415.93	1,118.3	96	45.7	

Assay Class: High Sensitivity DNA Assay  
 Data Path: C:\...ents and Settings\Bioanalyzer\2013-10-21\2013-10-21\_008.xad

Created: 10/21/2013 4:28:52 PM  
 Modified: 10/22/2013 9:49:01 AM

**Electropherogram Summary Continued ...**



**Overall Results for sample 11 : PSC11**

Number of peaks found: 16      Corr. Area 1: 6,626.2  
 Noise: 0.3      Corr. Area 2: 31.8

**Peak table for sample 11 : PSC11**

Peak	Size [bp]	Conc. [pg/μl]	Molarity [pmol/l]	Observations
1	35	125.00	5,411.3	Lower Marker
2	46	25.44	836.8	
3	127	82.35	980.3	
4	387	3,991.05	15,636.7	
5	404	317.75	1,190.8	
6	413	4,093.79	15,018.7	
7	783	21.56	41.7	
8	909	28.55	47.6	
9	1,131	13.07	17.5	
10	1,462	18.03	18.7	
11	1,653	21.63	19.8	
12	2,303	66.00	43.4	
13	2,463	20.93	12.9	
14	2,575	16.09	9.5	
15	2,772	15.78	8.6	
16	2,933	59.08	30.5	
17	10,380	75.00	10.9	Upper Marker
18	11,846	0.00	0.0	

**Region table for sample 11 : PSC11**

From [bp]	To [bp]	Average Size [bp]	Molarity [pmol/l]	Conc. [pg/μl]	Corr. Area	% of Total	Size distribution in CV [%]	Color
108	149	127	735.1	61.68	31.8	0	1.2	Blue
171	1,340	428	36,184.6	9,328.15	6,626.2	96	29.4	Dark Blue

Assay Class: High Sensitivity DNA Assay  
Data Path: C:\...ents and Settings\Bioanalyzer\2013-10-21\2013-10-21\_008.xad

Created: 10/21/2013 4:28:52 PM  
Modified: 10/22/2013 9:49:01 AM

**Gel Image**

