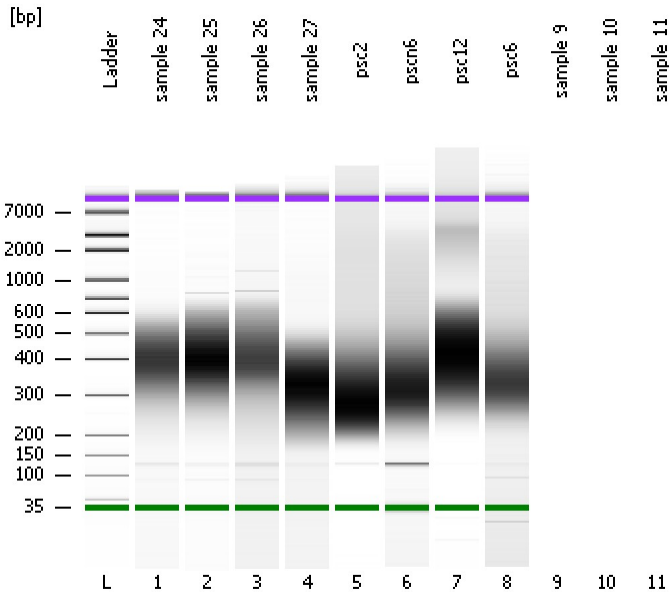


Assay Class: High Sensitivity DNA Assay
Data Path: C:\...ents and Settings\Bioanalyzer\2013-10-22\2013-10-22_004.xad

Created: 10/22/2013 1:26:26 PM
Modified: 10/22/2013 2:00:51 PM

Electrophoresis File Run Summary



Instrument Information:

Instrument Name: DE13701086 Firmware: C.01.069
Serial#: DE13701086 Type: G2938B

Assay Information:

Assay Origin Path: C:\Program Files\Agilent\2100 bioanalyzer\2100 expert\assays\dsDNA\High Sensitivity DNA.xsy
Assay Class: High Sensitivity DNA Assay
Version: 1.03
Assay Comments: Copyright © 2003-2010 Agilent Technologies

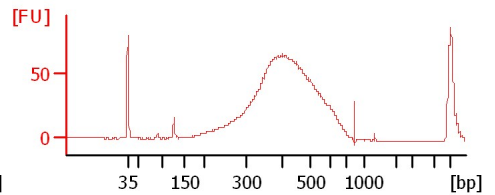
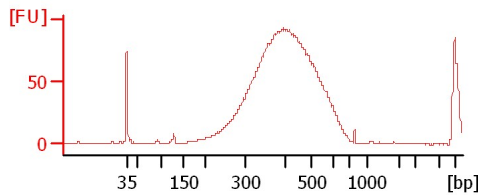
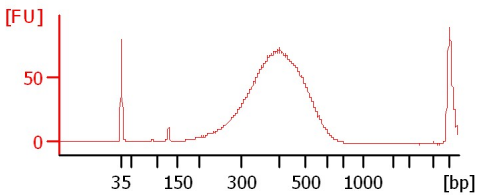
Chip Information:

Chip Lot #:
Reagent Kit Lot #:
Chip Comments:

sample 24

sample 25

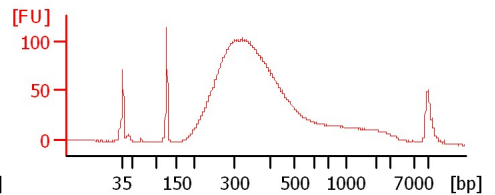
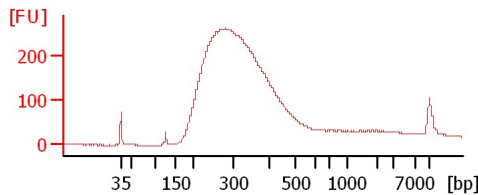
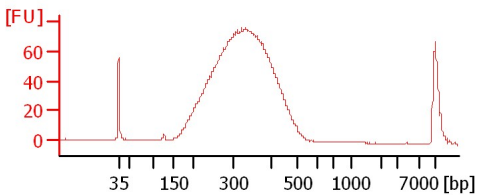
sample 26



sample 27

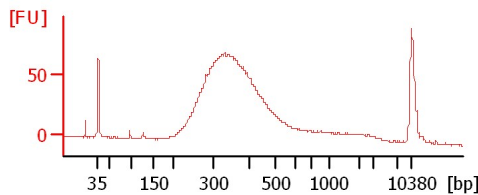
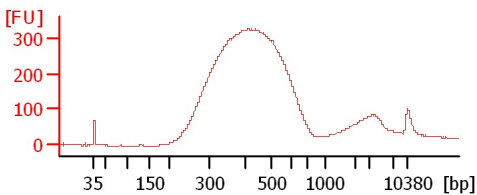
psc2

psc6



psc12

psc6



Assay Class: High Sensitivity DNA Assay
 Data Path: C:\...ents and Settings\Bioanalyzer\2013-10-22\2013-10-22_004.xad

Created: 10/22/2013 1:26:26 PM
 Modified: 10/22/2013 2:00:51 PM

Electrophoresis File Run Summary (Chip Summary)

Sample Name	Sample Comment	Rest. Digest	Status	Observation	Result Label	Result Color
sample 24		<input type="checkbox"/>	✓			
sample 25		<input type="checkbox"/>	✓			
sample 26		<input type="checkbox"/>	✓			
sample 27		<input type="checkbox"/>	✓			
psc2		<input type="checkbox"/>	✓			
pscn6		<input type="checkbox"/>	✓			
psc12		<input type="checkbox"/>	✓			
psc6		<input type="checkbox"/>	✓			
sample 9		<input type="checkbox"/>				
sample 10		<input type="checkbox"/>				
sample 11		<input type="checkbox"/>				
Ladder		<input type="checkbox"/>	✓			

Chip Lot #

Reagent Kit Lot #

Chip Comments :

Assay Class: High Sensitivity DNA Assay
Data Path: C:\...ents and Settings\Bioanalyzer\2013-10-22\2013-10-22_004.xad

Created: 10/22/2013 1:26:26 PM
Modified: 10/22/2013 2:00:51 PM

Electrophoresis Assay Details

General Analysis Settings

Number of Available Sample and Ladder Wells (Max.) : 12
Minimum Visible Range [s] : 32
Maximum Visible Range [s] : 138
Start Analysis Time Range [s] : 33
End Analysis Time Range [s] : 137.5
Ladder Concentration [pg/μl] : 1950
Uses Standard Area for Ladder Fragments
Lower Marker Concentration [pg/μl] : 125
Upper Marker Concentration [pg/μl] : 75
Used Upper Marker for Quantitation
Standard Curve Fit is Point to Point
Show Data Aligned to Lower and Upper Marker

Integrator Settings

Integration Start Time [s] : 33.05
Integration End Time [s] : 137
Slope Threshold : 0.8
Height Threshold [FU] : 5
Area Threshold : 0.1
Width Threshold [s] : 0.6
Baseline Plateau [s] : 0.5

Filter Settings

Filter Width [s] : 0.5
Polynomial Order : 4

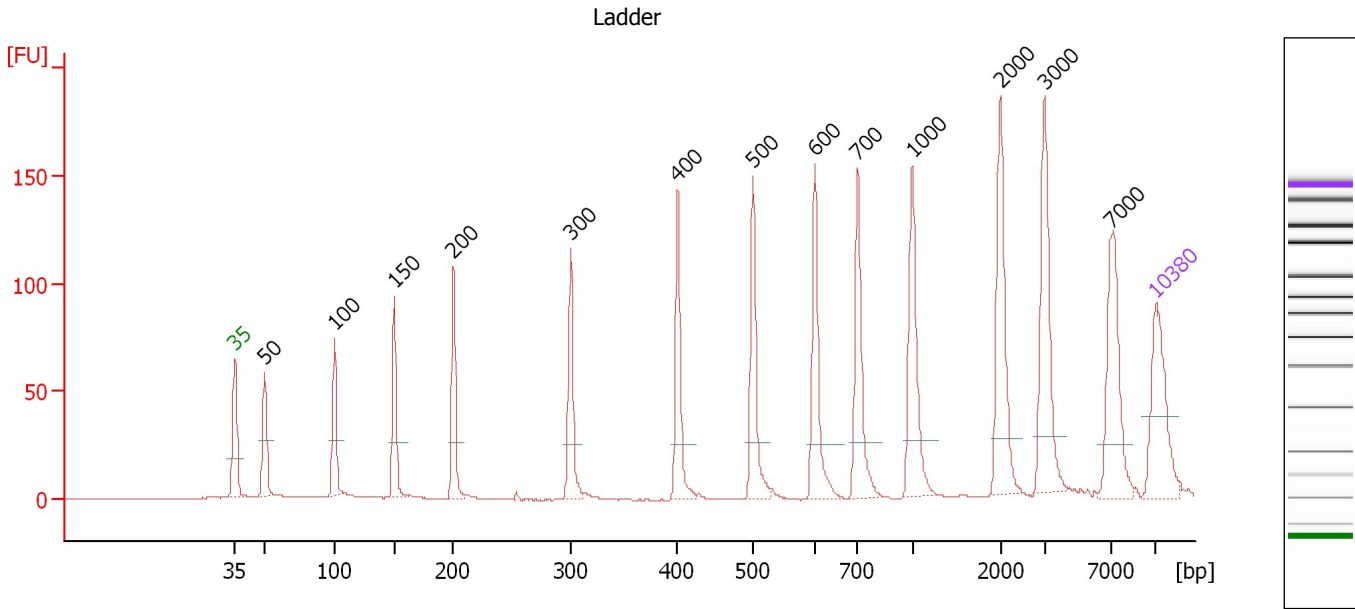
Ladder

Ladder Peak	Size	Area
1	35	160
2	50	210
3	100	208
4	150	221
5	200	242
6	300	270
7	400	305
8	500	306
9	600	336
10	700	321
11	1000	366
12	2000	413
13	3000	411
14	7000	400
15	10380	214

Assay Class: High Sensitivity DNA Assay
 Data Path: C:\...ents and Settings\Bioanalyzer\2013-10-22\2013-10-22_004.xad

Created: 10/22/2013 1:26:26 PM
 Modified: 10/22/2013 2:00:51 PM

Electropherogram Summary



Overall Results for Ladder

Noise: 0.1

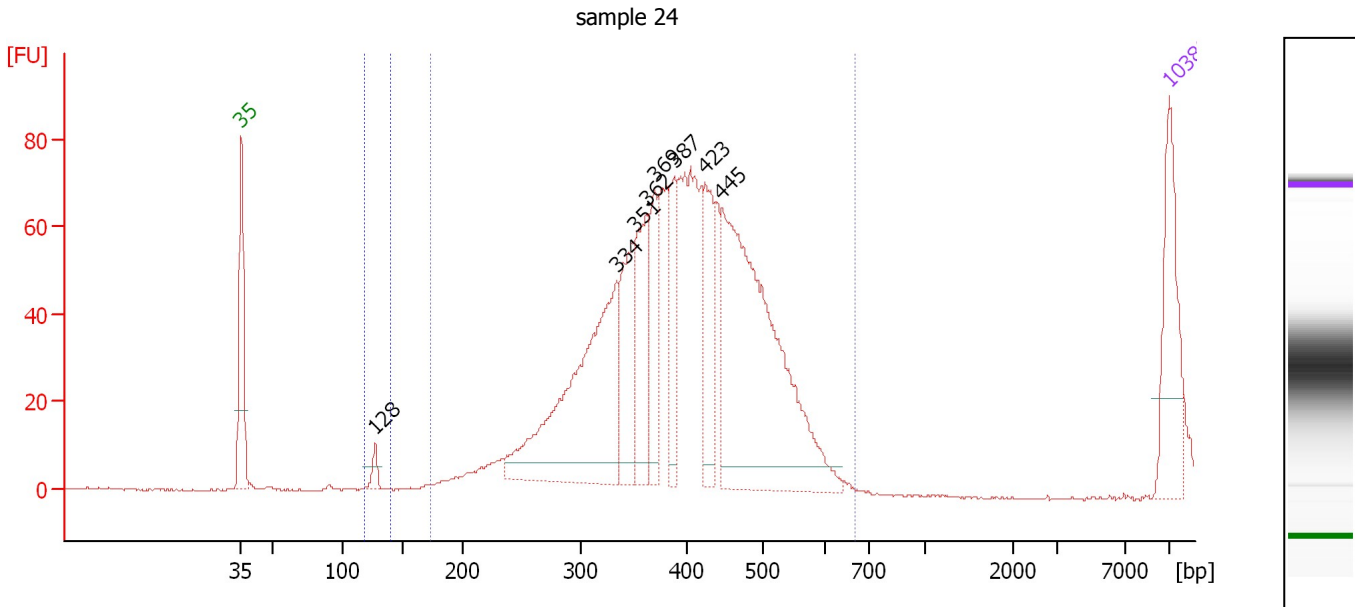
Peak table for Ladder

Peak	Size [bp]	Conc. [pg/μl]	Molarity [pmol/l]	Observations
1	35	125.00	5,411.3	Lower Marker
2	50	150.00	4,545.5	Ladder Peak
3	100	150.00	2,272.7	Ladder Peak
4	150	150.00	1,515.2	Ladder Peak
5	200	150.00	1,136.4	Ladder Peak
6	300	150.00	757.6	Ladder Peak
7	400	150.00	568.2	Ladder Peak
8	500	150.00	454.5	Ladder Peak
9	600	150.00	378.8	Ladder Peak
10	700	150.00	324.7	Ladder Peak
11	1,000	150.00	227.3	Ladder Peak
12	2,000	150.00	113.6	Ladder Peak
13	3,000	150.00	75.8	Ladder Peak
14	7,000	150.00	32.5	Ladder Peak
15	10,380	75.00	10.9	Upper Marker

Assay Class: High Sensitivity DNA Assay
 Data Path: C:\...ents and Settings\Bioanalyzer\2013-10-22\2013-10-22_004.xad

Created: 10/22/2013 1:26:26 PM
 Modified: 10/22/2013 2:00:51 PM

Electropherogram Summary Continued ...



Overall Results for sample 1 : sample 24

Number of peaks found: 8 Corr. Area 1: 1,148.1
 Noise: 0.2 Corr. Area 2: 4.0

Peak table for sample 1 : sample 24

Peak	Size [bp]	Conc. [pg/μl]	Molarity [pmol/l]	Observations
1	35	125.00	5,411.3	Lower Marker
2	128	14.44	171.4	
3	334	324.08	1,469.4	
4	351	101.29	437.8	
5	362	101.00	422.8	
6	369	75.50	309.7	
7	387	68.90	269.6	
8	423	91.90	329.5	
9	445	423.24	1,441.4	
10	10,380	75.00	10.9	Upper Marker

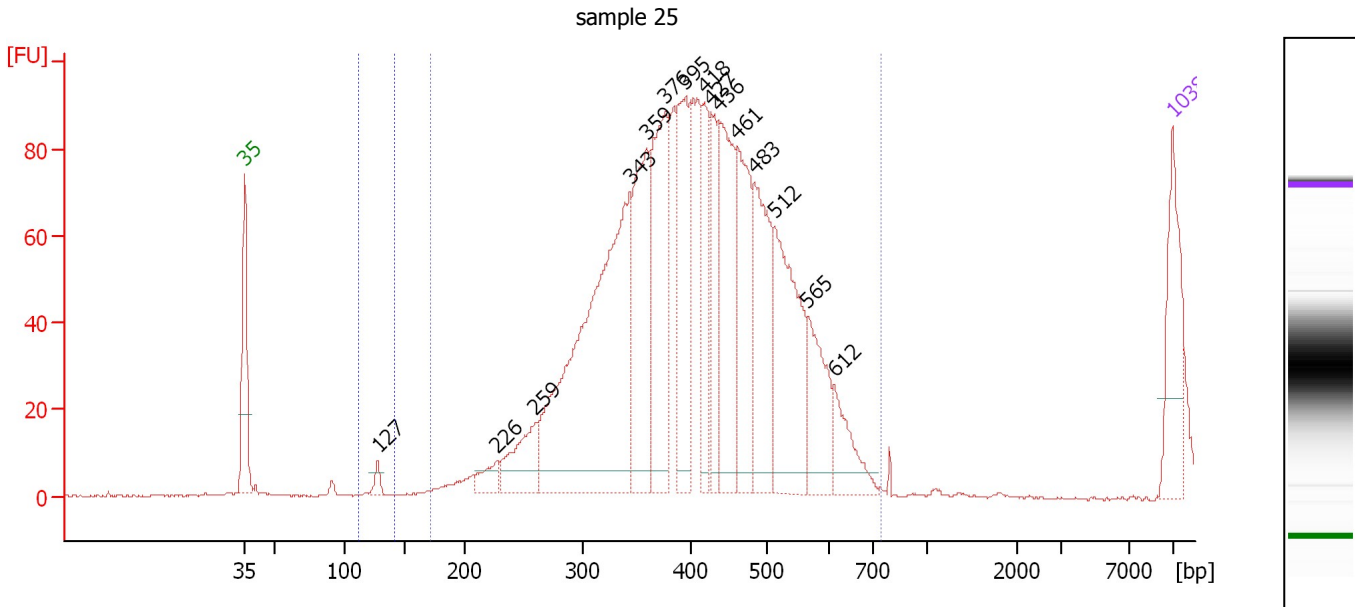
Region table for sample 1 : sample 24

From [bp]	To [bp]	Average Size [bp]	Molarity [pmol/l]	Conc. [pg/μl]	Corr. Area	% of Total	Size distribution in CV [%]	Color
119	140	127	72.9	6.13	4.0	0	0.8	Blue
173	667	400	5,125.7	1,293.62	1,148.1	99	17.4	Dark Blue

Assay Class: High Sensitivity DNA Assay
 Data Path: C:\...ents and Settings\Bioanalyzer\2013-10-22\2013-10-22_004.xad

Created: 10/22/2013 1:26:26 PM
 Modified: 10/22/2013 2:00:51 PM

Electropherogram Summary Continued ...



Overall Results for sample 2 : sample 25

Number of peaks found: 15 Corr. Area 1: 1,484.5
 Noise: 0.2 Corr. Area 2: 0.4

Peak table for sample 2 : sample 25

Peak	Size [bp]	Conc. [pg/μl]	Molarity [pmol/l]	Observations
1	35	125.00	5,411.3	Lower Marker
2	127	13.29	158.4	
3	226	26.74	179.3	
4	259	81.08	473.9	
5	343	579.25	2,555.9	
6	359	199.54	841.6	
7	376	213.76	861.1	
8	395	161.76	620.6	
9	418	93.33	338.3	
10	427	78.06	276.9	
11	436	193.48	672.1	
12	461	153.40	504.6	
13	483	163.01	511.4	
14	512	203.18	601.6	
15	565	92.67	248.5	
16	612	56.99	141.2	
17	10,380	75.00	10.9	Upper Marker

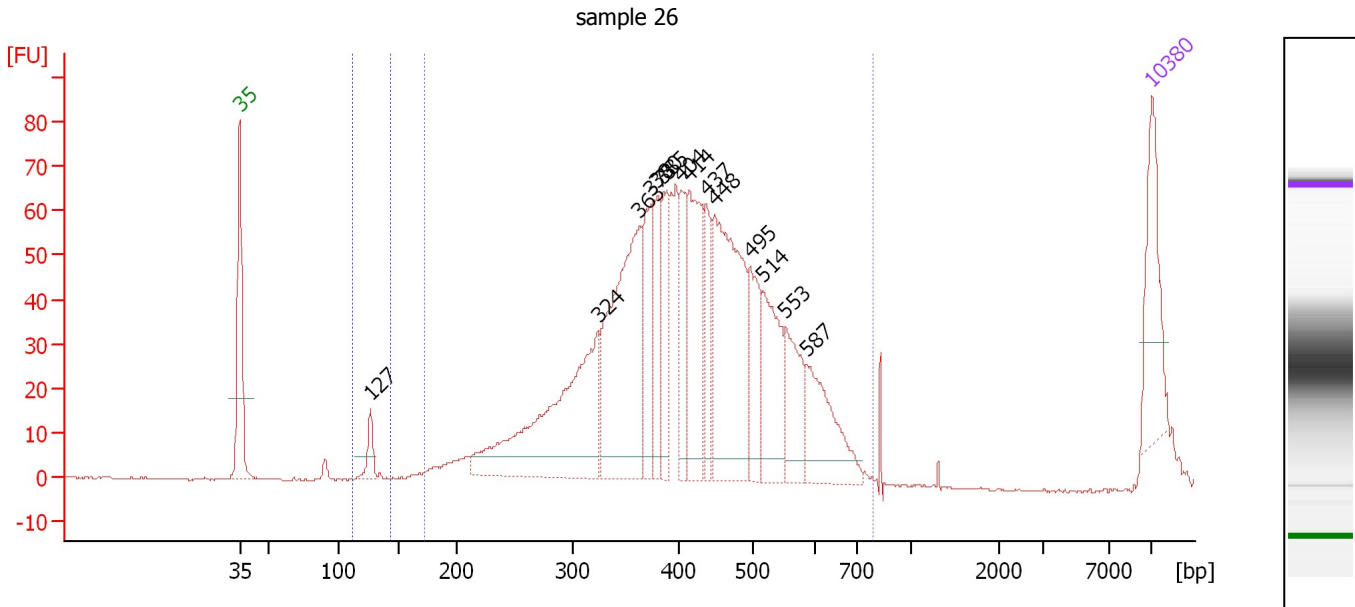
Region table for sample 2 : sample 25

From [bp]	To [bp]	Average Size [bp]	Molarity [pmol/l]	Conc. [pg/μl]	Corr. Area	% of Total	Size distribution in CV [%]	Color
112	141	127	8.7	0.73	0.4	0	0.4	Blue
170	749	411	7,621.7	1,966.63	1,484.5	100	18.8	Dark Blue

Assay Class: High Sensitivity DNA Assay
 Data Path: C:\...ents and Settings\Bioanalyzer\2013-10-22\2013-10-22_004.xad

Created: 10/22/2013 1:26:26 PM
 Modified: 10/22/2013 2:00:51 PM

Electropherogram Summary Continued ...



Overall Results for sample 3 : sample 26

Number of peaks found: 14 Corr. Area 1: 1,344.5
 Noise: 0.2 Corr. Area 2: 12.9

Peak table for sample 3 : sample 26

Peak	Size [bp]	Conc. [pg/μl]	Molarity [pmol/l]	Observations
1	35	125.00	5,411.3	Lower Marker
2	127	27.80	332.1	
3	324	311.67	1,457.7	
4	363	287.99	1,201.1	
5	373	95.02	385.6	
6	380	68.56	273.4	
7	385	83.69	328.9	
8	404	62.30	233.8	
9	414	147.92	541.8	
10	437	60.89	211.1	
11	448	257.65	871.9	
12	495	81.60	249.6	
13	514	108.39	319.2	
14	553	71.60	196.2	
15	587	101.53	262.0	
16	10,380	75.00	10.9	Upper Marker

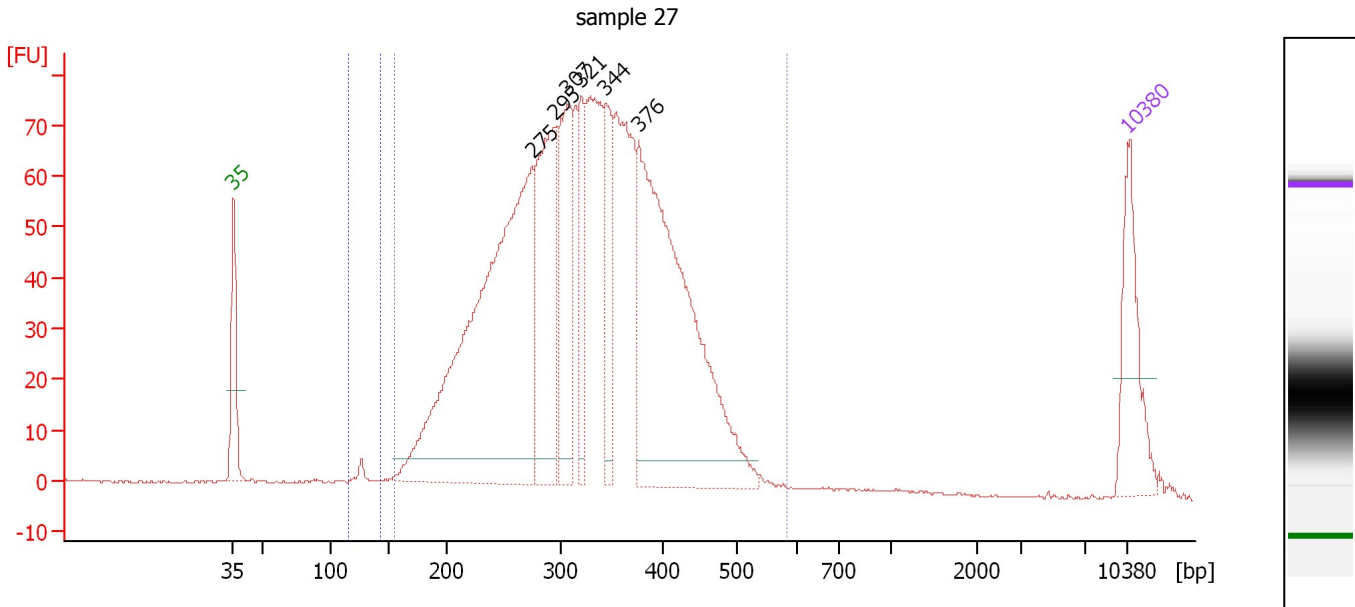
Region table for sample 3 : sample 26

From [bp]	To [bp]	Average Size [bp]	Molarity [pmol/l]	Conc. [pg/μl]	Corr. Area	% of Total	Size distribution in CV [%]	Color
112	144	127	290.6	24.30	12.9	1	1.8	Blue
172	791	419	7,274.1	1,845.58	1,344.5	98	23.0	Dark Blue

Assay Class: High Sensitivity DNA Assay
 Data Path: C:\...ents and Settings\Bioanalyzer\2013-10-22\2013-10-22_004.xad

Created: 10/22/2013 1:26:26 PM
 Modified: 10/22/2013 2:00:51 PM

Electropherogram Summary Continued ...



Overall Results for sample 4 : sample 27

Number of peaks found: 6 Corr. Area 1: 1,854.5
 Noise: 0.3 Corr. Area 2: 8.7

Peak table for sample 4 : sample 27

Peak	Size [bp]	Conc. [pg/μl]	Molarity [pmol/l]	Observations
1	35	125.00	5,411.3	Lower Marker
2	275	724.60	3,985.6	
3	295	254.44	1,308.5	
4	307	174.45	859.7	
5	321	80.91	382.1	
6	344	98.23	432.7	
7	376	535.50	2,155.7	
8	10,380	75.00	10.9	Upper Marker

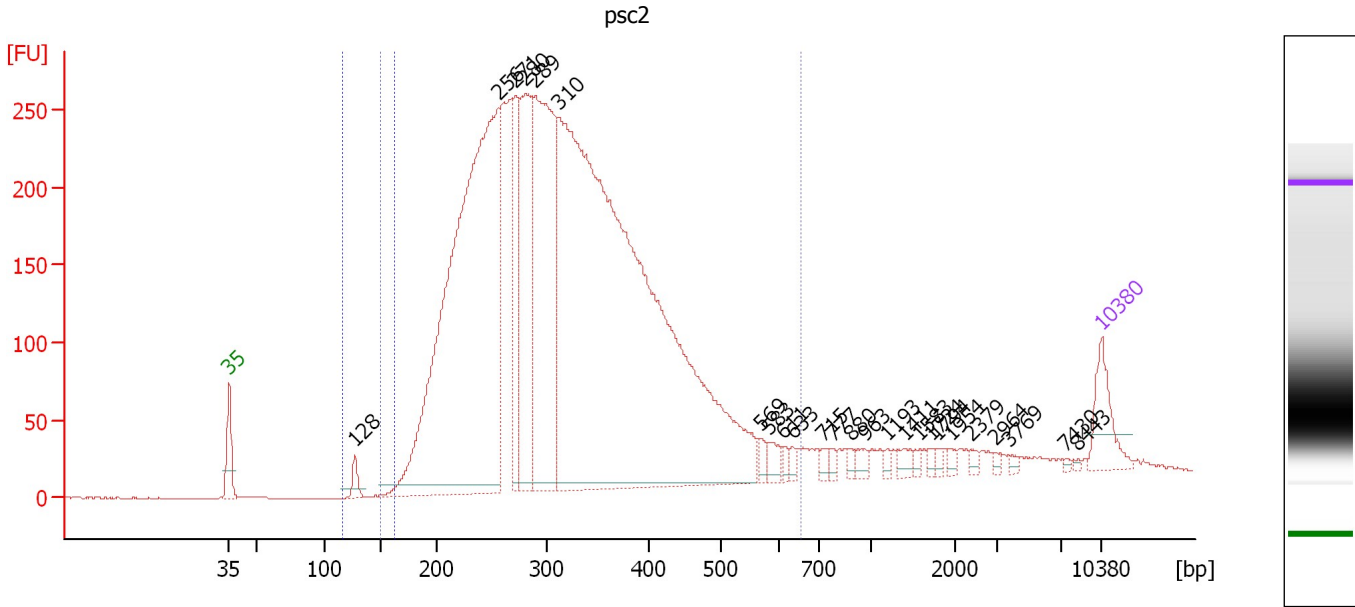
Region table for sample 4 : sample 27

From [bp]	To [bp]	Average Size [bp]	Molarity [pmol/l]	Conc. [pg/μl]	Corr. Area	% of Total	Size distribution in CV [%]	Color
116	143	128	176.3	14.85	8.7	0	4.8	Blue
155	582	326	12,473.9	2,480.74	1,854.5	98	22.6	Dark Blue

Assay Class: High Sensitivity DNA Assay
 Data Path: C:\...ents and Settings\Bioanalyzer\2013-10-22\2013-10-22_004.xad

Created: 10/22/2013 1:26:26 PM
 Modified: 10/22/2013 2:00:51 PM

Electropherogram Summary Continued ...



Overall Results for sample 5 : psc2

Number of peaks found: 25 Corr. Area 1: 6,388.6
 Noise: 0.2 Corr. Area 2: 16.4

Peak table for sample 5 : psc2


Peak	Size [bp]	Conc. [pg/μl]	Molarity [pmol/l]	Observations
1	35	125.00	5,411.3	Lower Marker
2	128	33.53	397.9	
3	256	1,987.32	11,770.8	
4	271	242.86	1,357.0	
5	280	494.84	2,679.7	
6	289	767.56	4,025.5	
7	310	3,120.81	15,230.0	
8	569	17.39	46.3	
9	583	30.28	78.7	
10	611	12.46	30.9	
11	633	14.95	35.8	
12	715	14.75	31.2	
13	777	10.73	20.9	
14	880	11.48	19.8	
15	963	17.56	27.6	
16	1,193	8.32	10.6	
17	1,411	18.65	20.0	
18	1,583	8.58	8.2	
19	1,724	7.90	6.9	
20	1,794	8.79	7.4	
21	1,954	9.31	7.2	
22	2,379	8.02	5.1	
23	2,964	6.70	3.4	
24	3,769	6.38	2.6	
25	7,430	3.32	0.7	
26	8,443	3.46	0.6	

Assay Class: High Sensitivity DNA Assay
 Data Path: C:\...ents and Settings\Bioanalyzer\2013-10-22\2013-10-22_004.xad



Created: 10/22/2013 1:26:26 PM
 Modified: 10/22/2013 2:00:51 PM

Electropherogram Summary Continued ...

... Peak table for sample 5 : psc2

Peak	Size [bp]	Conc. [pg/ μ l]	Molarity [pmol/l]	Observations
27	 10,380	75.00	10.9	Upper Marker

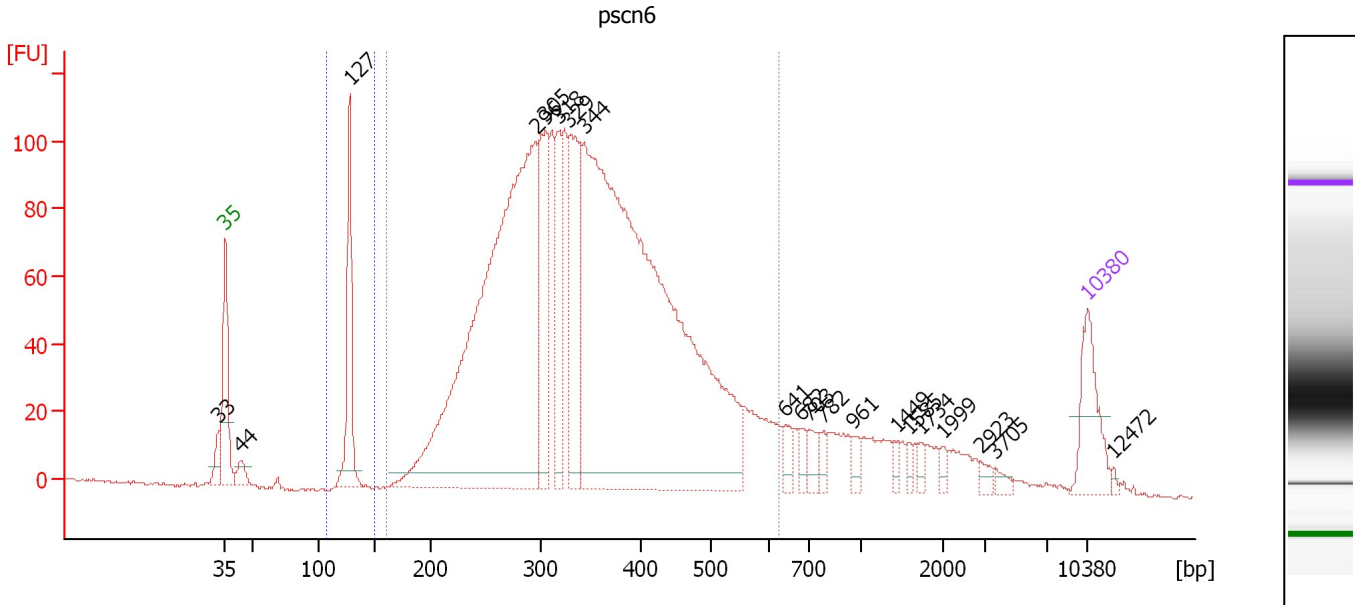
Region table for sample 5 : psc2

From [bp]	To [bp]	Average Size [bp]	Molarity [pmol/l]	Conc. [pg/ μ l]	Corr. Area	% of Total	Size distribution in CV [%]	Color
117	163	128	258.5	21.79	16.4	0	1.4	
150	654	321	34,835.6	6,724.07	6,388.6	94	27.1	

Assay Class: High Sensitivity DNA Assay
 Data Path: C:\...ents and Settings\Bioanalyzer\2013-10-22\2013-10-22_004.xad

Created: 10/22/2013 1:26:26 PM
 Modified: 10/22/2013 2:00:51 PM

Electropherogram Summary Continued ...



Overall Results for sample 6 : pscn6

Number of peaks found: 20 Corr. Area 1: 2,545.6
 Noise: 0.4 Corr. Area 2: 92.3

Peak table for sample 6 : pscn6

Peak	Size [bp]	Conc. [pg/μl]	Molarity [pmol/l]	Observations
1	33	0.00	0.0	
2	35	125.00	5,411.3	Lower Marker
3	44	26.19	910.5	
4	127	183.83	2,185.0	
5	296	1,263.06	6,468.8	
6	305	205.73	1,021.9	
7	318	130.34	620.3	
8	329	240.49	1,107.4	
9	344	1,661.52	7,319.0	
10	641	19.49	46.1	
11	682	16.42	36.5	
12	703	27.19	58.6	
13	782	13.86	26.9	
14	961	16.02	25.3	
15	1,449	9.55	10.0	
16	1,585	9.75	9.3	
17	1,734	9.43	8.2	
18	1,999	8.81	6.7	
19	2,923	9.64	5.0	
20	3,705	8.59	3.5	
21	10,380	75.00	10.9	Upper Marker
22	12,472	0.00	0.0	

Region table for sample 6 : pscn6


From [bp]	To [bp]	Average Size [bp]	Molarity [pmol/l]	Conc. [pg/μl]	Corr. Area	% of Total	Size distribution in CV [%]	Color
106	149	127	2,097.9	176.13	92.3	3	1.8	Blue

Assay Class: High Sensitivity DNA Assay
Data Path: C:\...ents and Settings\Bioanalyzer\2013-10-22\2013-10-22_004.xad

Created: 10/22/2013 1:26:26 PM
Modified: 10/22/2013 2:00:51 PM

Electropherogram Summary Continued ...

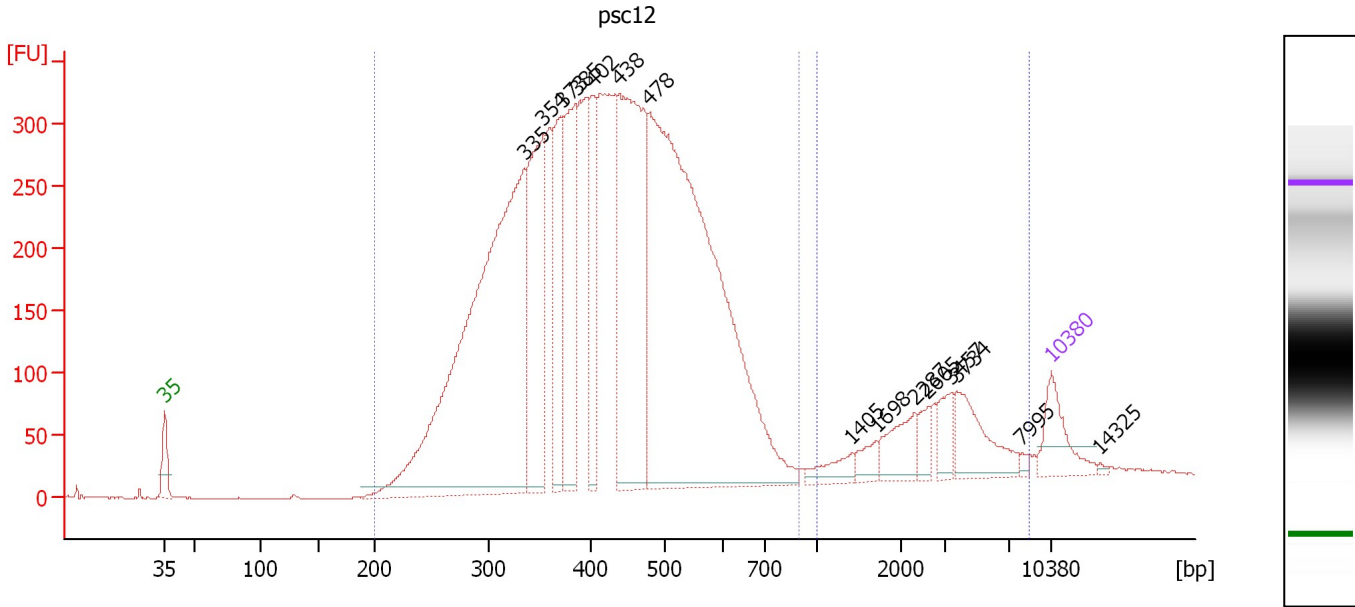
... Region table for sample 6 : psc6

From [bp]	To [bp]	Average Size [bp]	Molarity [pmol/l]	Conc. [pg/μl]	Corr. Area	% of Total	Size distribution in CV [%]	Color
160	627	353	17,450.5	3,726.29	2,545.6	86	25.4	

Assay Class: High Sensitivity DNA Assay
 Data Path: C:\...ents and Settings\Bioanalyzer\2013-10-22\2013-10-22_004.xad

Created: 10/22/2013 1:26:26 PM
 Modified: 10/22/2013 2:00:51 PM

Electropherogram Summary Continued ...



Overall Results for sample 7 : psc12

Number of peaks found: 15 Corr. Area 1: 7,910.1
 Noise: 0.3 Corr. Area 2: 610.4

Peak table for sample 7 : psc12

Peak	Size [bp]	Conc. [pg/μl]	Molarity [pmol/l]	Observations
1	35	125.00	5,411.3	Lower Marker
2	335	1,531.45	6,934.8	
3	354	454.49	1,946.1	
4	373	263.45	1,071.5	
5	385	332.39	1,307.5	
6	402	207.46	782.8	
7	438	712.86	2,466.3	
8	478	1,725.00	5,465.5	
9	1,405	39.38	42.5	
10	1,698	29.52	26.3	
11	2,287	73.49	48.7	
12	2,605	31.24	18.2	
13	3,457	48.71	21.3	
14	3,734	109.79	44.6	
15	7,995	7.49	1.4	
16	10,380	75.00	10.9	Upper Marker
17	14,325	0.00	0.0	

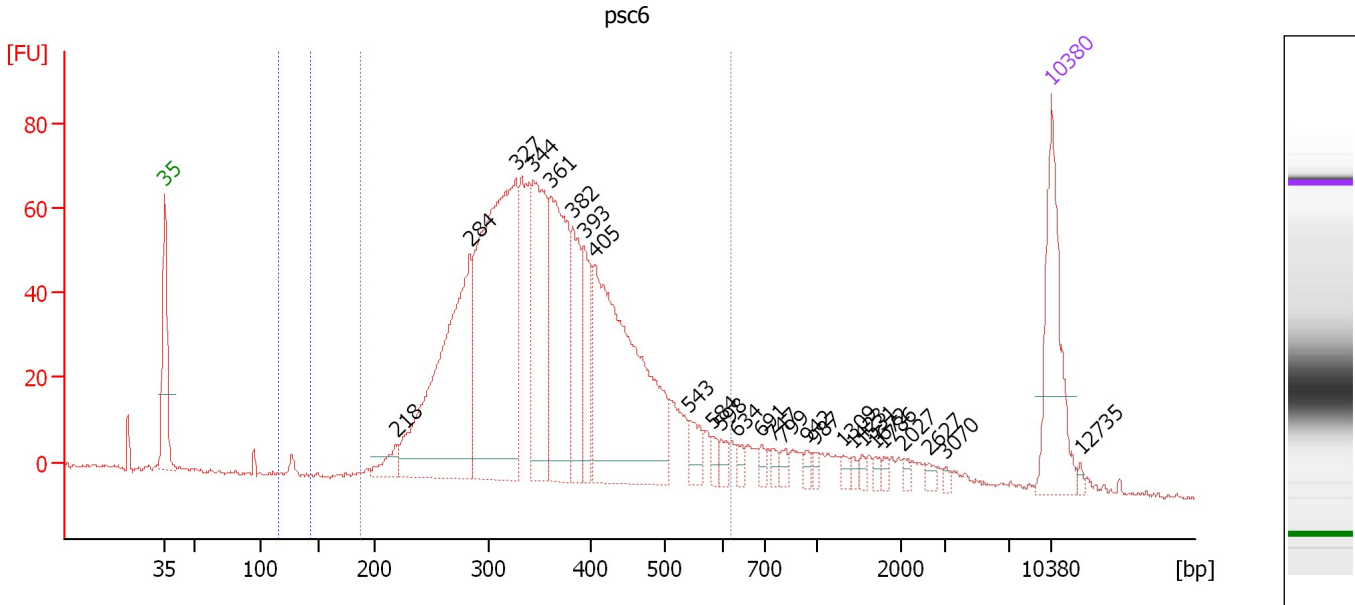
Region table for sample 7 : psc12

From [bp]	To [bp]	Average Size [bp]	Molarity [pmol/l]	Conc. [pg/μl]	Corr. Area	% of Total	Size distribution in CV [%]	Color
200	898	427	23,328.5	6,020.44	7,910.1	92	24.9	Blue
1,006	8,593	3,317	197.4	340.52	610.4	7	52.1	Dark Blue

Assay Class: High Sensitivity DNA Assay
 Data Path: C:\...ents and Settings\Bioanalyzer\2013-10-22\2013-10-22_004.xad

Created: 10/22/2013 1:26:26 PM
 Modified: 10/22/2013 2:00:51 PM

Electropherogram Summary Continued ...



Overall Results for sample 8 : psc6

Number of peaks found: 26 Corr. Area 1: 1,434.0
 Noise: 0.5 Corr. Area 2: 2.2

Peak table for sample 8 : psc6

Peak	Size [bp]	Conc. [pg/μl]	Molarity [pmol/l]	Observations
1	35	125.00	5,411.3	Lower Marker
2	218	18.62	129.2	
3	284	273.63	1,461.4	
4	327	361.57	1,675.9	
5	344	148.98	656.1	
6	361	161.09	676.8	
7	382	63.87	253.2	
8	393	54.77	211.0	
9	405	271.73	1,017.7	
10	543	18.92	52.8	
11	584	7.09	18.4	
12	598	8.47	21.5	
13	634	6.78	16.2	
14	691	7.43	16.3	
15	747	5.66	11.5	
16	799	6.52	12.4	
17	942	4.93	7.9	
18	987	4.39	6.7	
19	1,309	4.90	5.7	
20	1,423	3.50	3.7	
21	1,531	3.84	3.8	
22	1,672	3.46	3.1	
23	1,786	3.65	3.1	
24	2,027	3.39	2.5	
25	2,627	3.69	2.1	
26	3,070	2.26	1.1	

Assay Class: High Sensitivity DNA Assay
 Data Path: C:\...ents and Settings\Bioanalyzer\2013-10-22\2013-10-22_004.xad

Created: 10/22/2013 1:26:26 PM
 Modified: 10/22/2013 2:00:51 PM

Electropherogram Summary Continued ...

... Peak table for sample 8 : psc6

Peak	Size [bp]	Conc. [pg/μl]	Molarity [pmol/l]	Observations
27	10,380	75.00	10.9	Upper Marker
28	12,735	0.00	0.0	

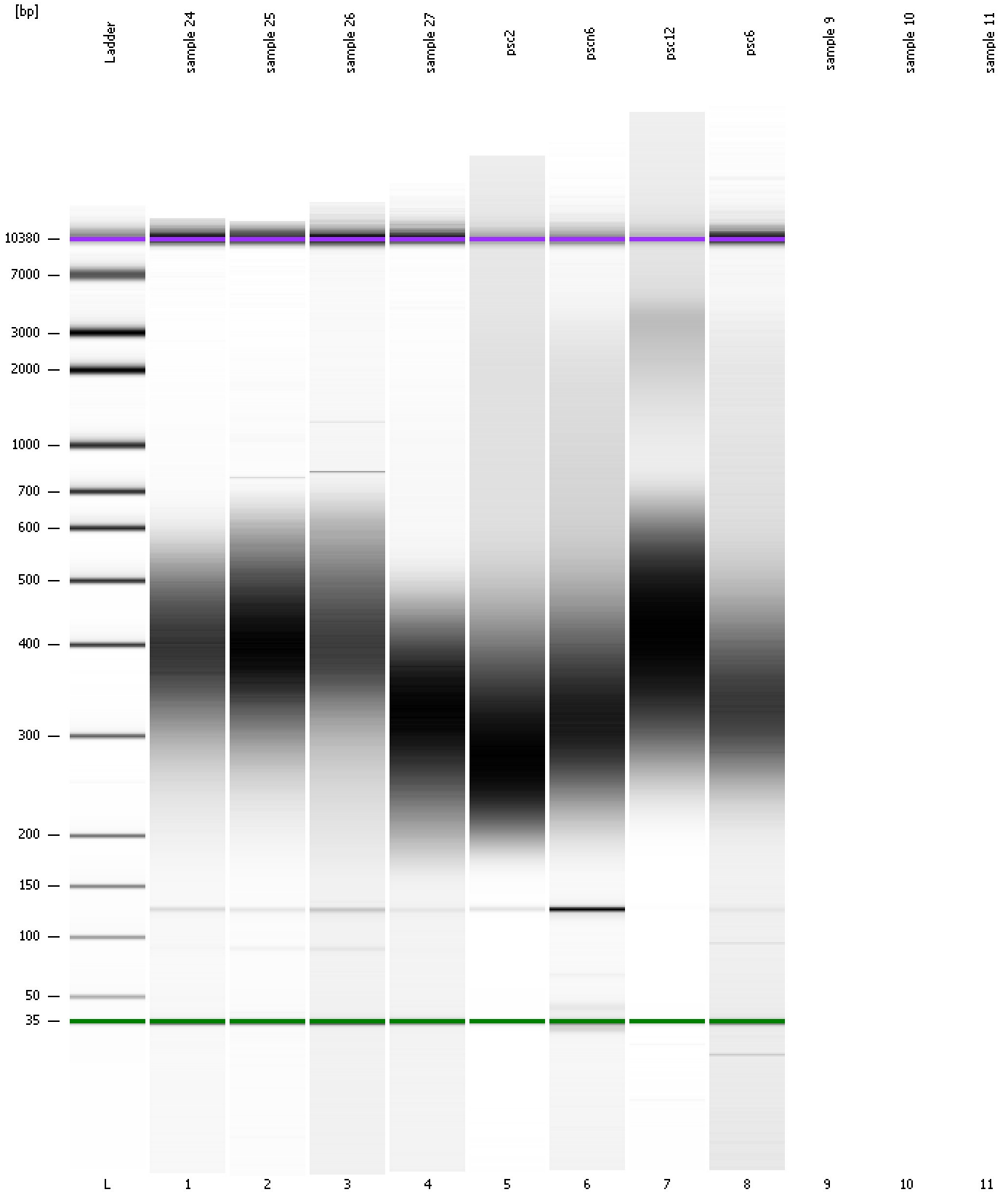
Region table for sample 8 : psc6

From [bp]	To [bp]	Average Size [bp]	Molarity [pmol/l]	Conc. [pg/μl]	Corr. Area	% of Total	Size distribution in CV [%]	Color
116	143	127	37.7	3.16	2.2	0	1.0	Blue
187	619	364	6,792.7	1,526.83	1,434.0	89	22.2	Blue

Assay Class: High Sensitivity DNA Assay
Data Path: C:\...ents and Settings\Bioanalyzer\2013-10-22\2013-10-22_004.xad

Created: 10/22/2013 1:26:26 PM
Modified: 10/22/2013 2:00:51 PM

Gel Image



Assay Class: High Sensitivity DNA Assay
Data Path: C:\...ents and Settings\Bioanalyzer\2013-10-22\2013-10-22_004.xad

Created: 10/22/2013 1:26:26 PM
Modified: 10/22/2013 2:00:51 PM

Invalid Samples

Sample 9 has not been run, no results available.

Sample 10 has not been run, no results available.

Sample 11 has not been run, no results available.