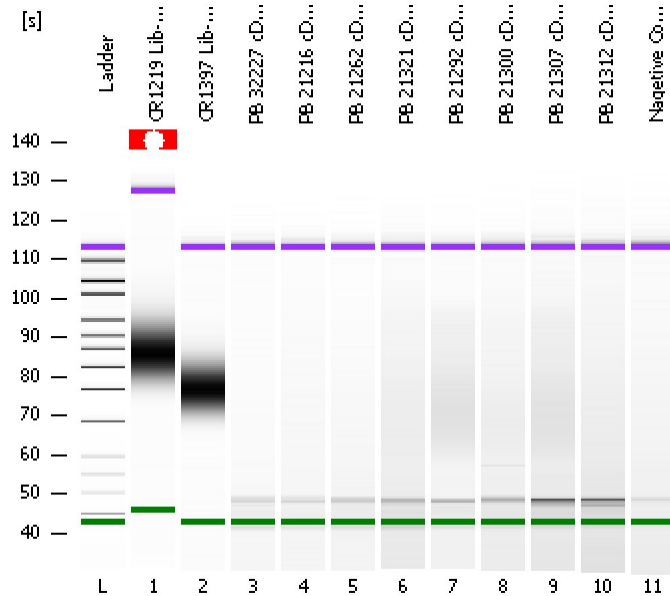


Assay Class: High Sensitivity DNA Assay
Data Path: C:\...ents and Settings\Bioanalyzer\2013-10-22\2013-10-22_006.xad

Created: 10/22/2013 4:33:30 PM
Modified: 10/22/2013 5:31:13 PM

Electrophoresis File Run Summary



Instrument Information:

Instrument Name: DE13701086 Firmware: C.01.069
Serial#: DE13701086 Type: G2938B

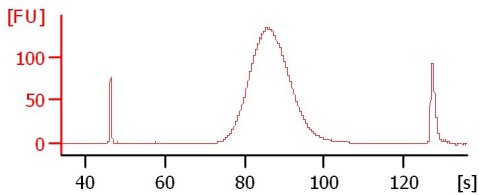
Assay Information:

Assay Origin Path: C:\Program Files\Agilent\2100 bioanalyzer\2100 expert\assays\dsDNA\High Sensitivity DNA.xsy
Assay Class: High Sensitivity DNA Assay
Version: 1.03
Assay Comments: Copyright © 2003-2010 Agilent Technologies

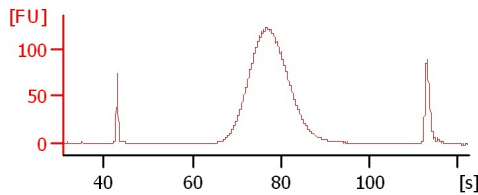
Chip Information:

Chip Lot #:
Reagent Kit Lot #:
Chip Comments:

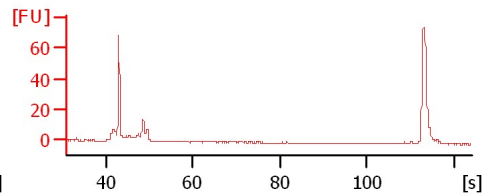
CR1219 Lib-350bp 1:16



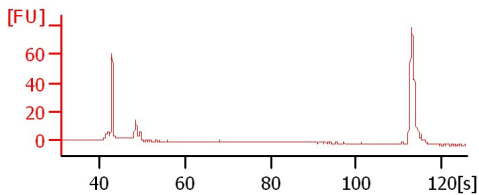
CR1397 Lib-350bp 1:19



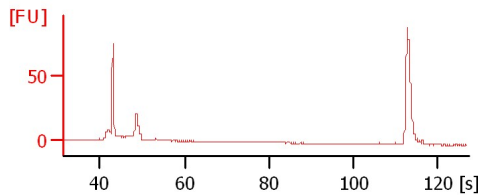
PB 32227 cDNA Lib



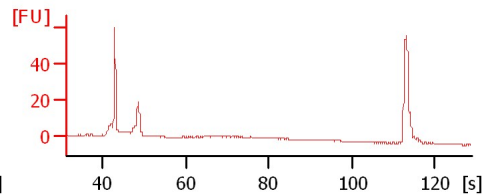
PB 21216 cDNA Lib



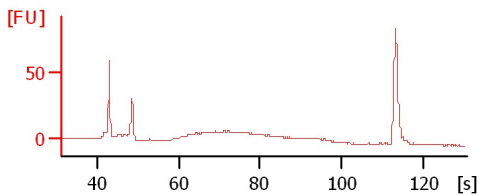
PB 21262 cDNA Lib



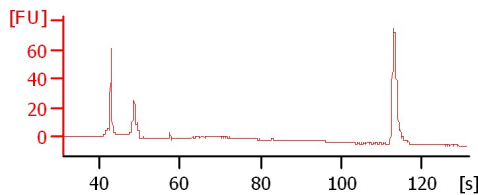
PB 21321 cDNA Lib



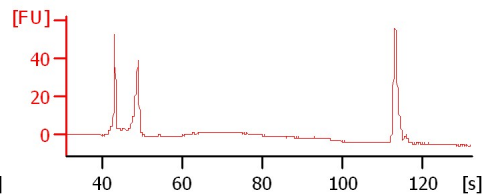
PB 21292 cDNA Lib



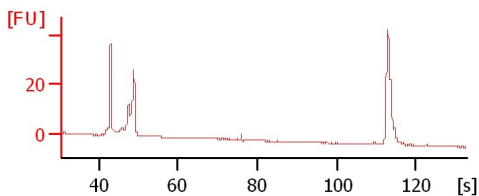
PB 21300 cDNA Lib



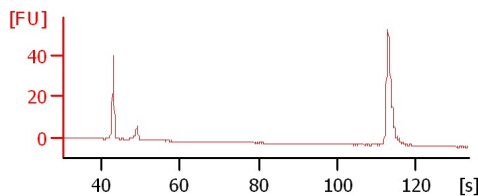
PB 21307 cDNA Lib



PB 21312 cDNA Lib



Negative Control



Assay Class: High Sensitivity DNA Assay
Data Path: C:\...ents and Settings\Bioanalyzer\2013-10-22\2013-10-22_006.xad

Created: 10/22/2013 4:33:30 PM
Modified: 10/22/2013 5:31:13 PM

Electrophoresis File Run Summary (Chip Summary)

Sample Name	Sample Comment	Rest. Digest	Status	Observation	Result Label	Result Color
CR1219 Lib-350bp 1:16		<input type="checkbox"/>	✓			
CR1397 Lib-350bp 1:19		<input type="checkbox"/>	✓			
PB 32227 cDNA Lib		<input type="checkbox"/>	✓			
PB 21216 cDNA Lib		<input type="checkbox"/>	✓			
PB 21262 cDNA Lib		<input type="checkbox"/>	✓			
PB 21321 cDNA Lib		<input type="checkbox"/>	✓			
PB 21292 cDNA Lib		<input type="checkbox"/>	✓			
PB 21300 cDNA Lib		<input type="checkbox"/>	✓			
PB 21307 cDNA Lib		<input type="checkbox"/>	✓			
PB 21312 cDNA Lib		<input type="checkbox"/>	✓			
Nagetive Control		<input type="checkbox"/>	✓			
Ladder		<input type="checkbox"/>	✓			

Chip Lot #

Reagent Kit Lot #

Chip Comments :

Assay Class: High Sensitivity DNA Assay
 Data Path: C:\...ents and Settings\Bioanalyzer\2013-10-22\2013-10-22_006.xad

Created: 10/22/2013 4:33:30 PM
 Modified: 10/22/2013 5:31:13 PM

Electrophoresis Assay Details

General Analysis Settings

Number of Available Sample and Ladder Wells (Max.) : 12
 Minimum Visible Range [s] : 32
 Maximum Visible Range [s] : 138
 Start Analysis Time Range [s] : 33
 End Analysis Time Range [s] : 137.5
 Ladder Concentration [pg/μl] : 1950
 Uses Standard Area for Ladder Fragments
 Lower Marker Concentration [pg/μl] : 125
 Upper Marker Concentration [pg/μl] : 75
 Used Upper Marker for Quantitation
 Standard Curve Fit is Point to Point
 Show Data Aligned to Lower and Upper Marker

Integrator Settings

Integration Start Time [s] : 33.05
 Integration End Time [s] : 137
 Slope Threshold : 0.8
 Height Threshold [FU] : 5
 Area Threshold : 0.1
 Width Threshold [s] : 0.6
 Baseline Plateau [s] : 0.5

Filter Settings

Filter Width [s] : 0.5
 Polynomial Order : 4

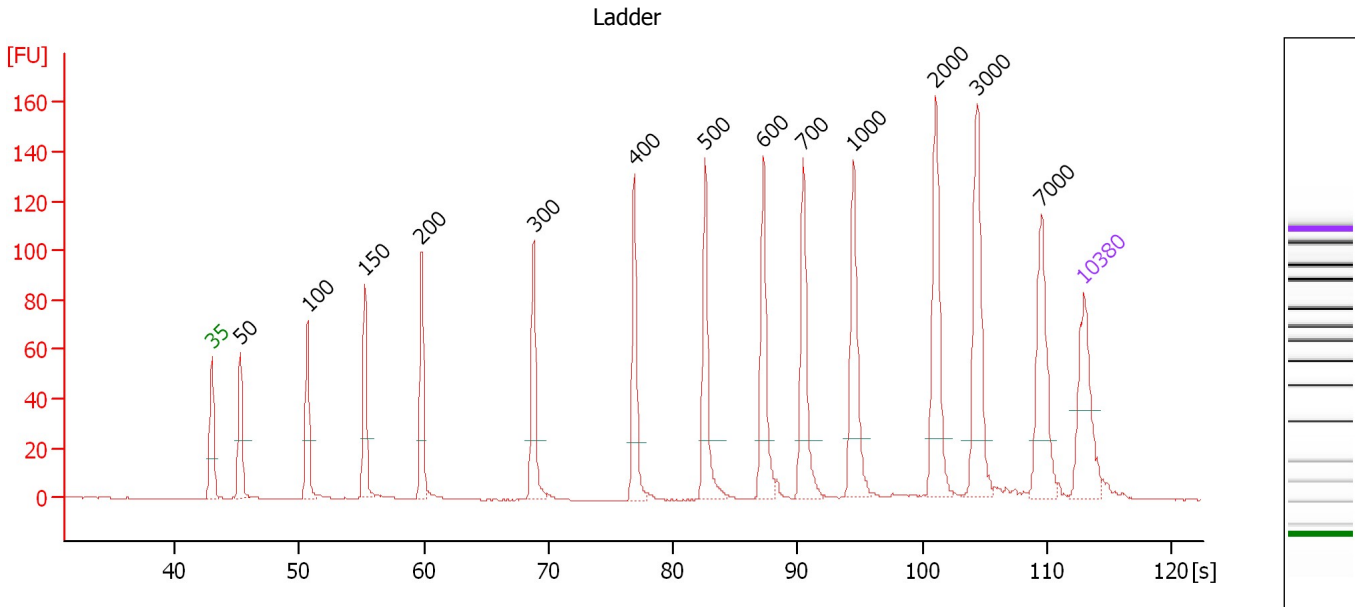
Ladder

Ladder Peak	Size	Area
1	35	160
2	50	210
3	100	208
4	150	221
5	200	242
6	300	270
7	400	305
8	500	306
9	600	336
10	700	321
11	1000	366
12	2000	413
13	3000	411
14	7000	400
15	10380	214

Assay Class: High Sensitivity DNA Assay
 Data Path: C:\...ents and Settings\Bioanalyzer\2013-10-22\2013-10-22_006.xad

Created: 10/22/2013 4:33:30 PM
 Modified: 10/22/2013 5:31:13 PM

Electropherogram Summary



Overall Results for Ladder

Noise: 0.1

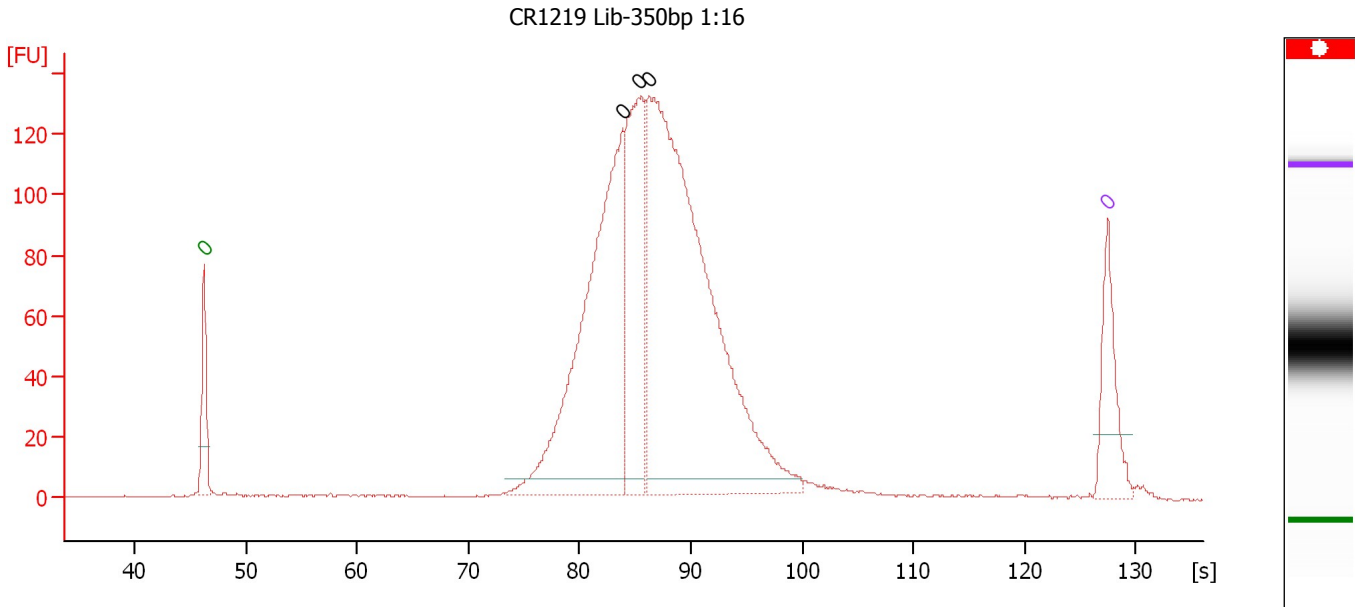
Peak table for Ladder

Peak	Size [bp]	Conc. [pg/μl]	Molarity [pmol/l]	Observations
1	35	125.00	5,411.3	Lower Marker
2	50	150.00	4,545.5	Ladder Peak
3	100	150.00	2,272.7	Ladder Peak
4	150	150.00	1,515.2	Ladder Peak
5	200	150.00	1,136.4	Ladder Peak
6	300	150.00	757.6	Ladder Peak
7	400	150.00	568.2	Ladder Peak
8	500	150.00	454.5	Ladder Peak
9	600	150.00	378.8	Ladder Peak
10	700	150.00	324.7	Ladder Peak
11	1,000	150.00	227.3	Ladder Peak
12	2,000	150.00	113.6	Ladder Peak
13	3,000	150.00	75.8	Ladder Peak
14	7,000	150.00	32.5	Ladder Peak
15	10,380	75.00	10.9	Upper Marker

Assay Class: High Sensitivity DNA Assay
 Data Path: C:\...ents and Settings\Bioanalyzer\2013-10-22\2013-10-22_006.xad

Created: 10/22/2013 4:33:30 PM
 Modified: 10/22/2013 5:31:13 PM

Electropherogram Summary Continued ...



Setpoint Deviations for sample 1 : CR1219 Lib-350bp 1:16

End Analysis Time Range [s] : 106.05

Overall Results for sample 1 : CR1219 Lib-350bp 1:16

Number of peaks found: 3 Noise: 0.2

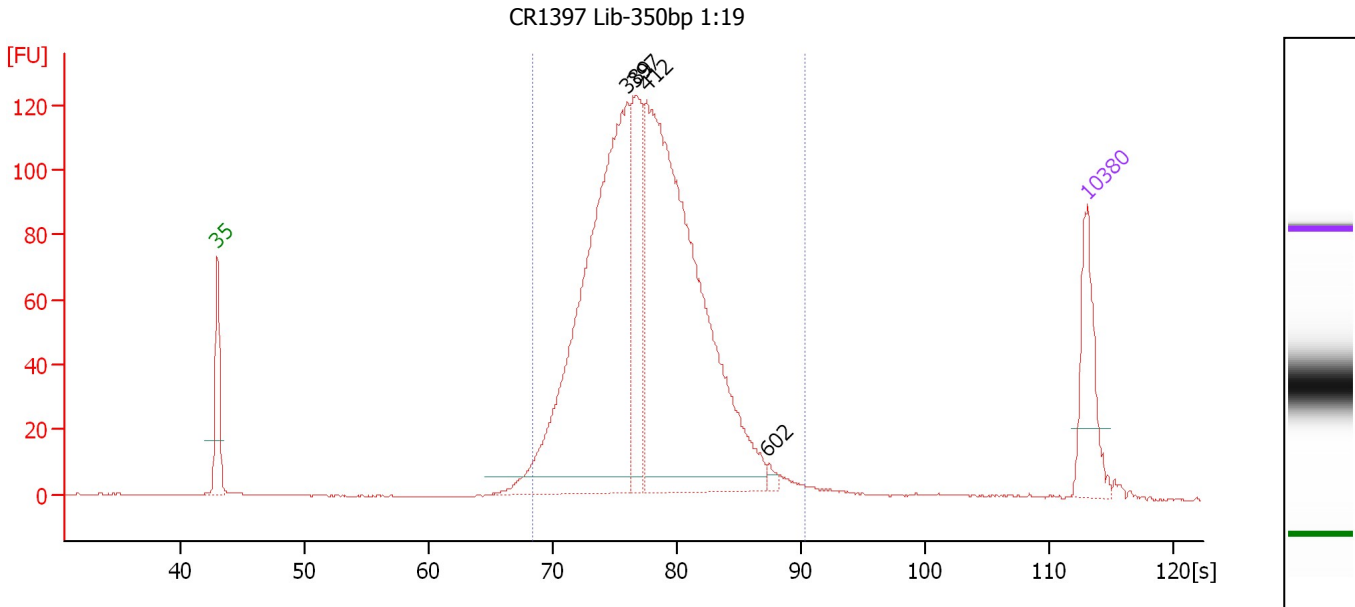
Peak table for sample 1 : CR1219 Lib-350bp 1:16

Peak	Size [bp]	Conc. [pg/μl]	Molarity [pmol/l]	Observations
1	0	125.00	0.0	Lower Marker
2	0	1,242.47	0.0	
3	0	606.78	0.0	
4	0	2,101.54	0.0	
5	0	75.00	0.0	Upper Marker

Assay Class: High Sensitivity DNA Assay
 Data Path: C:\...ents and Settings\Bioanalyzer\2013-10-22\2013-10-22_006.xad

Created: 10/22/2013 4:33:30 PM
 Modified: 10/22/2013 5:31:13 PM

Electropherogram Summary Continued ...



Overall Results for sample 2 : CR1397 Lib-350bp 1:19

Number of peaks found: 4 Corr. Area 1: 1,730.6
 Noise: 0.2

Peak table for sample 2 : CR1397 Lib-350bp 1:19

Peak	Size [bp]	Conc. [pg/μl]	Molarity [pmol/l]	Observations
1	35	125.00	5,411.3	Lower Marker
2	389	726.31	2,829.3	
3	397	181.35	692.1	
4	412	816.98	3,006.5	
5	602	6.57	16.5	
6	10,380	75.00	10.9	Upper Marker

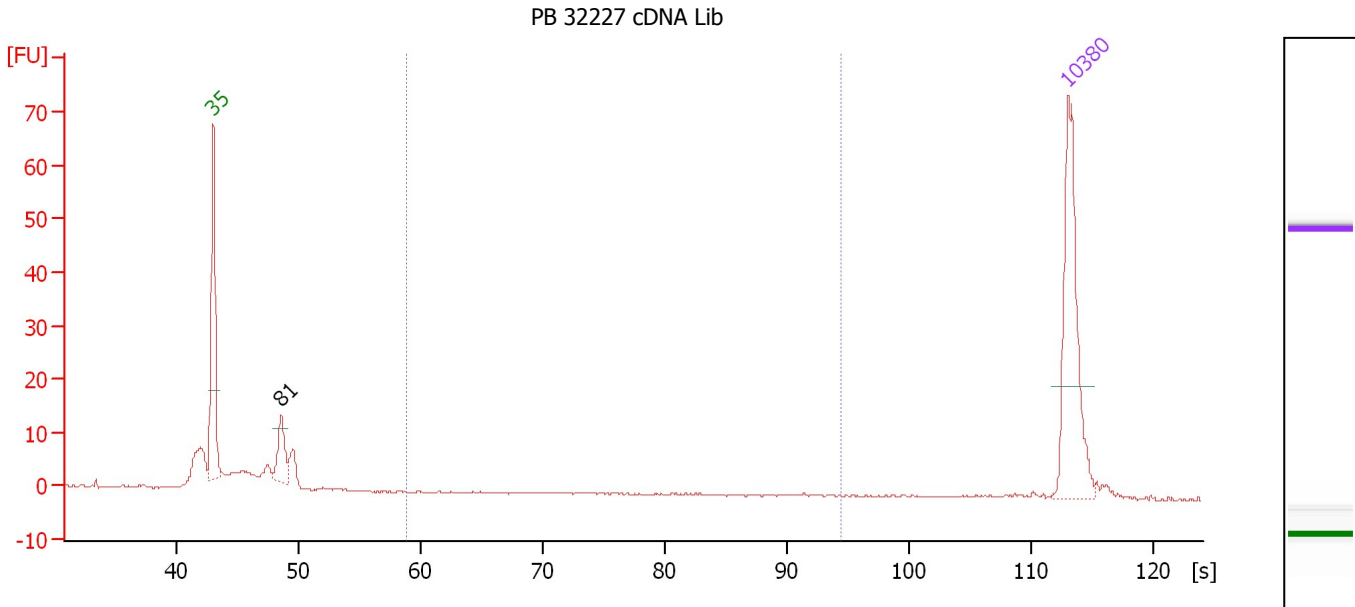
Region table for sample 2 : CR1397 Lib-350bp 1:19

From [s]	To [s]	Average Size [bp]	Molarity [pmol/l]	Conc. [pg/μl]	Corr. Area % of Total	Size distribution in CV [%]	Color
68.35	90.28	419	6,646.6	1,784.67	1,730.6 97	15.9	Blue

Assay Class: High Sensitivity DNA Assay
 Data Path: C:\...ents and Settings\Bioanalyzer\2013-10-22\2013-10-22_006.xad

Created: 10/22/2013 4:33:30 PM
 Modified: 10/22/2013 5:31:13 PM

Electropherogram Summary Continued ...



Setpoint Deviations for sample 3 : PB 32227 cDNA Lib

Height Threshold [FU] : 10

Overall Results for sample 3 : PB 32227 cDNA Lib

Number of peaks found: 1 Corr. Area 1: 0.8
 Noise: 0.1

Peak table for sample 3 : PB 32227 cDNA Lib

Peak	Size [bp]	Conc. [pg/μl]	Molarity [pmol/l]	Observations
1	35	125.00	5,411.3	Lower Marker
2	81	33.14	622.9	
3	10,380	75.00	10.9	Upper Marker

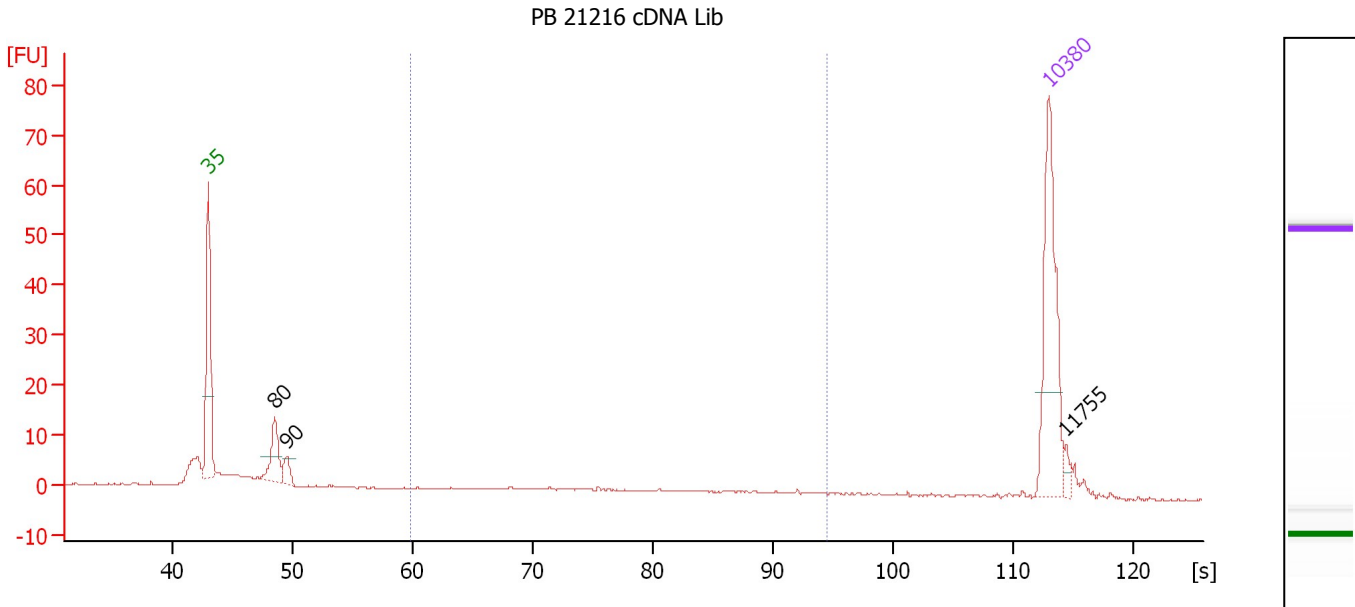
Region table for sample 3 : PB 32227 cDNA Lib

From [s]	To [s]	Average Size [bp]	Molarity [pmol/l]	Conc. [pg/μl]	Corr. Area % of Total	Size distribution in CV [%]	Color	
58.80	94.47	721	2.0	0.88	0.8	1	22.4	Blue

Assay Class: High Sensitivity DNA Assay
 Data Path: C:\...ents and Settings\Bioanalyzer\2013-10-22\2013-10-22_006.xad

Created: 10/22/2013 4:33:30 PM
 Modified: 10/22/2013 5:31:13 PM

Electropherogram Summary Continued ...



Overall Results for sample 4 : PB 21216 cDNA Lib

Number of peaks found: 3 Corr. Area 1: 21.1
 Noise: 0.2

Peak table for sample 4 : PB 21216 cDNA Lib

Peak	Size [bp]	Conc. [pg/μl]	Molarity [pmol/l]	Observations
1	35	125.00	5,411.3	Lower Marker
2	80	36.27	685.0	
3	90	13.63	230.1	
4	10,380	75.00	10.9	Upper Marker
5	11,755	0.00	0.0	

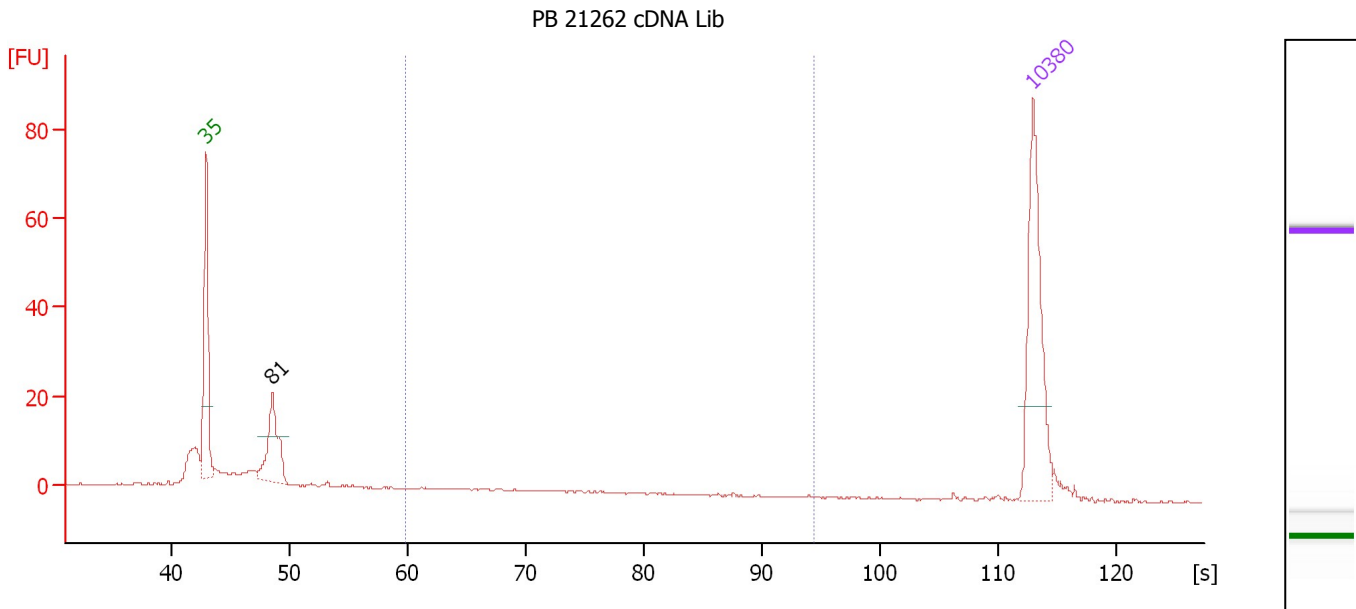
Region table for sample 4 : PB 21216 cDNA Lib

From [s]	To [s]	Average Size [bp]	Molarity [pmol/l]	Conc. [pg/μl]	Corr. Area % of Total	Size distribution in CV [%]	Color	
59.81	94.47	476	108.8	27.53	21.1	17	39.9	Blue

Assay Class: High Sensitivity DNA Assay
 Data Path: C:\...ents and Settings\Bioanalyzer\2013-10-22\2013-10-22_006.xad

Created: 10/22/2013 4:33:30 PM
 Modified: 10/22/2013 5:31:13 PM

Electropherogram Summary Continued ...



Setpoint Deviations for sample 5 : PB 21262 cDNA Lib

Height Threshold [FU] : 10

Overall Results for sample 5 : PB 21262 cDNA Lib

Number of peaks found: 1 Corr. Area 1: 8.5
 Noise: 0.2

Peak table for sample 5 : PB 21262 cDNA Lib

Peak	Size [bp]	Conc. [pg/μl]	Molarity [pmol/l]	Observations
1	35	125.00	5,411.3	Lower Marker
2	81	64.74	1,215.8	
3	10,380	75.00	10.9	Upper Marker

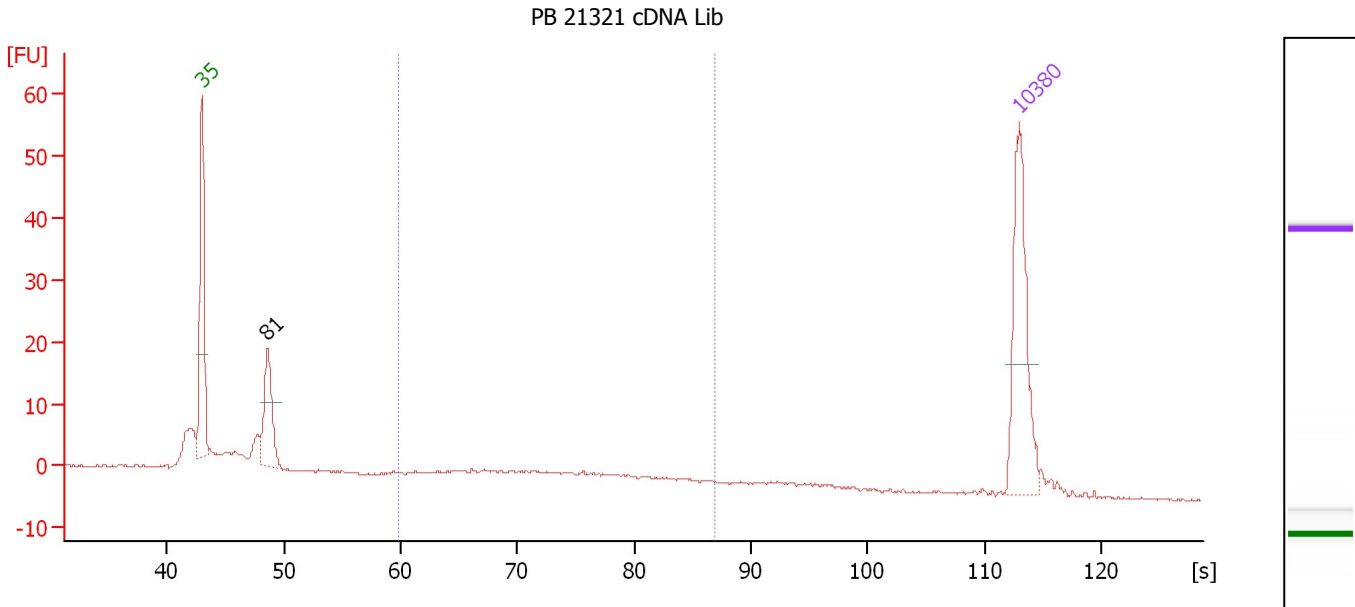
Region table for sample 5 : PB 21262 cDNA Lib

From [s]	To [s]	Average Size [bp]	Molarity [pmol/l]	Conc. [pg/μl]	Corr. Area % of Total	Size distribution in CV [%]	Color
59.81	94.47	313	53.5	10.07	8.5	6	31.3

Assay Class: High Sensitivity DNA Assay
 Data Path: C:\...ents and Settings\Bioanalyzer\2013-10-22\2013-10-22_006.xad

Created: 10/22/2013 4:33:30 PM
 Modified: 10/22/2013 5:31:13 PM

Electropherogram Summary Continued ...



Setpoint Deviations for sample 6 : PB 21321 cDNA Lib

Height Threshold [FU] : 10

Overall Results for sample 6 : PB 21321 cDNA Lib

Number of peaks found: 1 Corr. Area 1: 39.0
 Noise: 0.1

Peak table for sample 6 : PB 21321 cDNA Lib

Peak	Size [bp]	Conc. [pg/μl]	Molarity [pmol/l]	Observations
1	35	125.00	5,411.3	Lower Marker
2	81	67.84	1,271.1	
3	10,380	75.00	10.9	Upper Marker

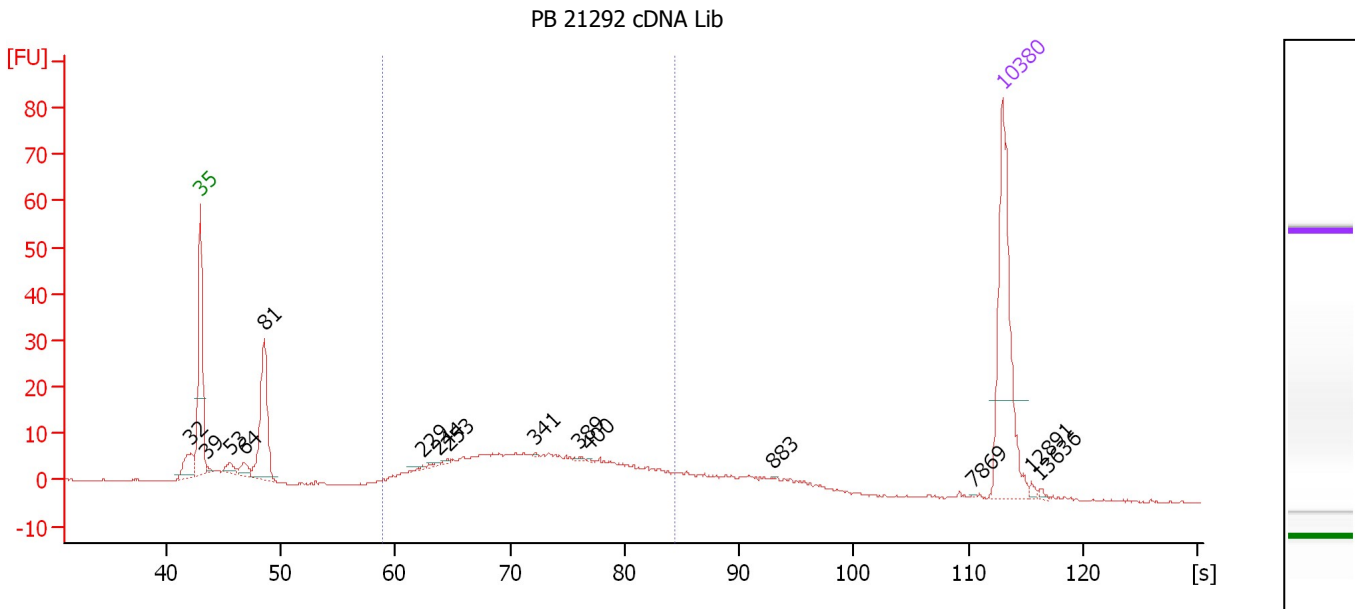
Region table for sample 6 : PB 21321 cDNA Lib

From [s]	To [s]	Average Size [bp]	Molarity [pmol/l]	Conc. [pg/μl]	Corr. Area % of Total	Size distribution in CV [%]	Color	
59.81	86.96	369	282.4	61.95	39.0	26	26.6	Blue

Assay Class: High Sensitivity DNA Assay
 Data Path: C:\...ents and Settings\Bioanalyzer\2013-10-22\2013-10-22_006.xad

Created: 10/22/2013 4:33:30 PM
 Modified: 10/22/2013 5:31:13 PM

Electropherogram Summary Continued ...



Setpoint Deviations for sample 7 : PB 21292 cDNA Lib

Height Threshold [FU] : 0.5

Overall Results for sample 7 : PB 21292 cDNA Lib

Number of peaks found: 15 Corr. Area 1: 210.9
 Noise: 0.2

Peak table for sample 7 : PB 21292 cDNA Lib

Peak	Size [bp]	Conc. [pg/µl]	Molarity [pmol/l]	Observations
1	32	0.00	0.0	
2	35	125.00	5,411.3	Lower Marker
3	39	2.18	84.8	
4	53	7.15	205.4	
5	64	8.54	200.7	
6	81	80.12	1,507.2	
7	229	1.62	10.7	
8	244	1.62	10.0	
9	253	1.08	6.4	
10	341	0.69	3.1	
11	389	1.07	4.2	
12	400	0.55	2.1	
13	883	0.27	0.5	
14	7,869	0.29	0.1	
15	10,380	75.00	10.9	Upper Marker
16	12,891	0.00	0.0	
17	13,636	0.00	0.0	

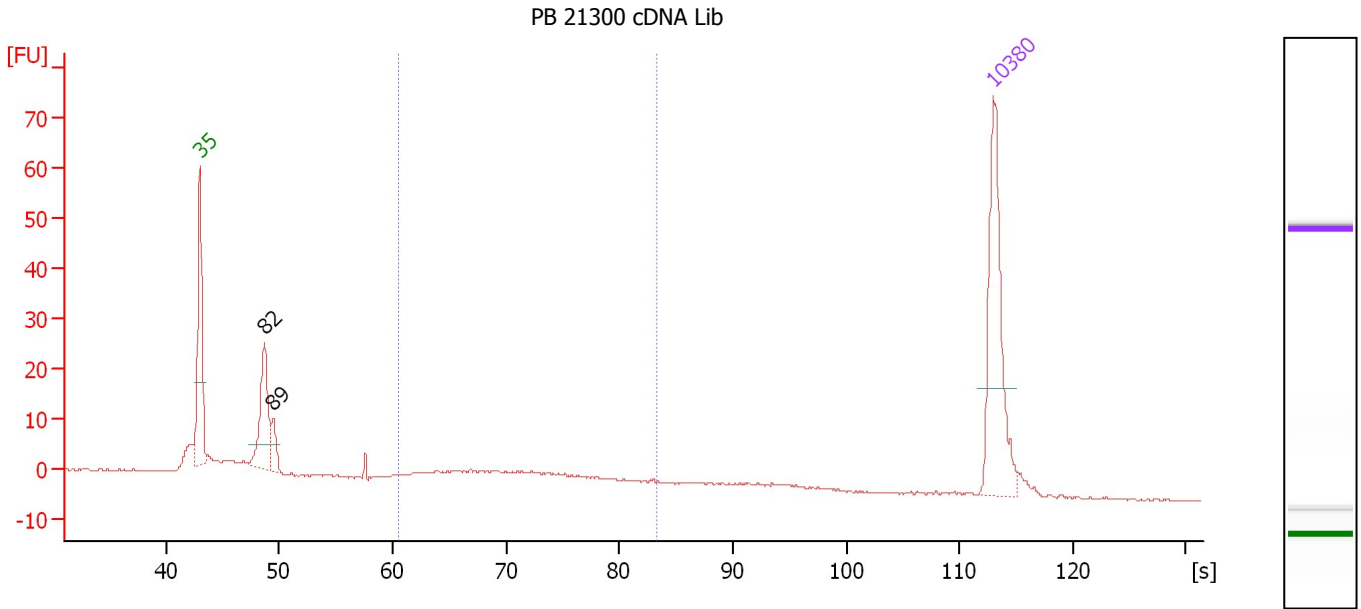
Region table for sample 7 : PB 21292 cDNA Lib

From [s]	To [s]	Average Size [bp]	Molarity [pmol/l]	Conc. [pg/µl]	Corr. Area % of Total	Size distribution in CV [%]	Color
58.98	84.36	349	1,286.1	270.98	210.9 56	24.5	Blue

Assay Class: High Sensitivity DNA Assay
 Data Path: C:\...ents and Settings\Bioanalyzer\2013-10-22\2013-10-22_006.xad

Created: 10/22/2013 4:33:30 PM
 Modified: 10/22/2013 5:31:13 PM

Electropherogram Summary Continued ...



Overall Results for sample 8 : PB 21300 cDNA Lib

Number of peaks found: 2 Corr. Area 1: 49.4
 Noise: 0.1

Peak table for sample 8 : PB 21300 cDNA Lib

Peak	Size [bp]	Conc. [pg/μl]	Molarity [pmol/l]	Observations
1	35	125.00	5,411.3	Lower Marker
2	82	71.90	1,336.1	
3	89	17.54	298.5	
4	10,380	75.00	10.9	Upper Marker

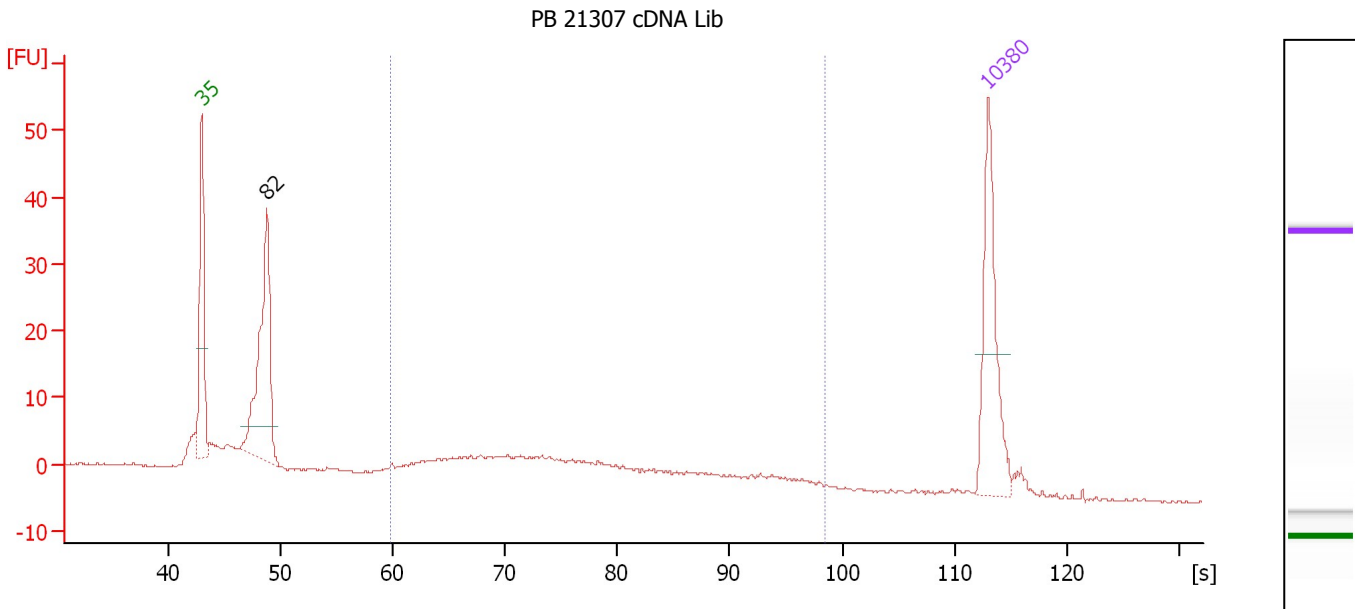
Region table for sample 8 : PB 21300 cDNA Lib

From [s]	To [s]	Average Size [bp]	Molarity [pmol/l]	Conc. [pg/μl]	Corr. Area % of Total	Size distribution in CV [%]	Color	
60.56	83.34	335	311.9	64.41	49.4	29	22.6	Blue

Assay Class: High Sensitivity DNA Assay
 Data Path: C:\...ents and Settings\Bioanalyzer\2013-10-22\2013-10-22_006.xad

Created: 10/22/2013 4:33:30 PM
 Modified: 10/22/2013 5:31:13 PM

Electropherogram Summary Continued ...



Overall Results for sample 9 : PB 21307 cDNA Lib

Number of peaks found: 1 Corr. Area 1: 115.8
 Noise: 0.2

Peak table for sample 9 : PB 21307 cDNA Lib

Peak	Size [bp]	Conc. [pg/μl]	Molarity [pmol/l]	Observations
1	35	125.00	5,411.3	Lower Marker
2	82	191.90	3,524.7	
3	10,380	75.00	10.9	Upper Marker

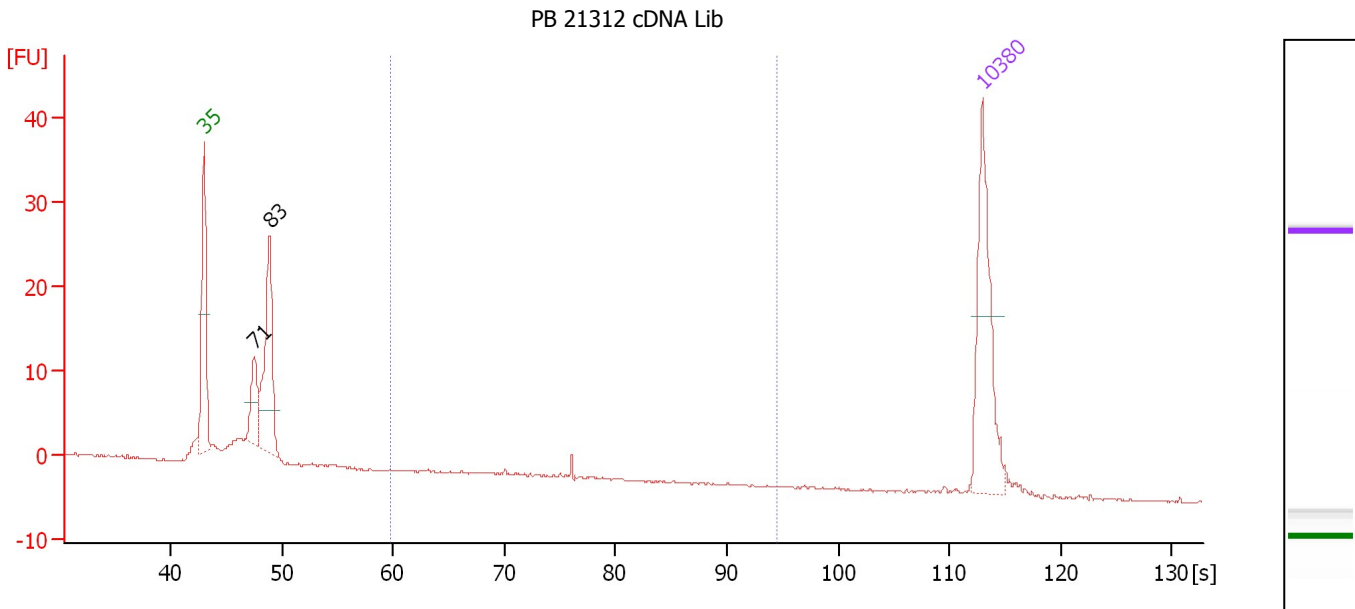
Region table for sample 9 : PB 21307 cDNA Lib

From [s]	To [s]	Average Size [bp]	Molarity [pmol/l]	Conc. [pg/μl]	Corr. Area	% of Total	Size distribution in CV [%]	Color
59.81	98.47	468	832.8	195.55	115.8	44	55.5	Blue

Assay Class: High Sensitivity DNA Assay
 Data Path: C:\...ents and Settings\Bioanalyzer\2013-10-22\2013-10-22_006.xad

Created: 10/22/2013 4:33:30 PM
 Modified: 10/22/2013 5:31:13 PM

Electropherogram Summary Continued ...



Overall Results for sample 10 : PB 21312 cDNA Lib

Number of peaks found: 2 Corr. Area 1: 0.7
 Noise: 0.1

Peak table for sample 10 : PB 21312 cDNA Lib

Peak	Size [bp]	Conc. [pg/μl]	Molarity [pmol/l]	Observations
1	35	125.00	5,411.3	Lower Marker
2	71	44.23	945.1	
3	83	116.29	2,111.2	
4	10,380	75.00	10.9	Upper Marker

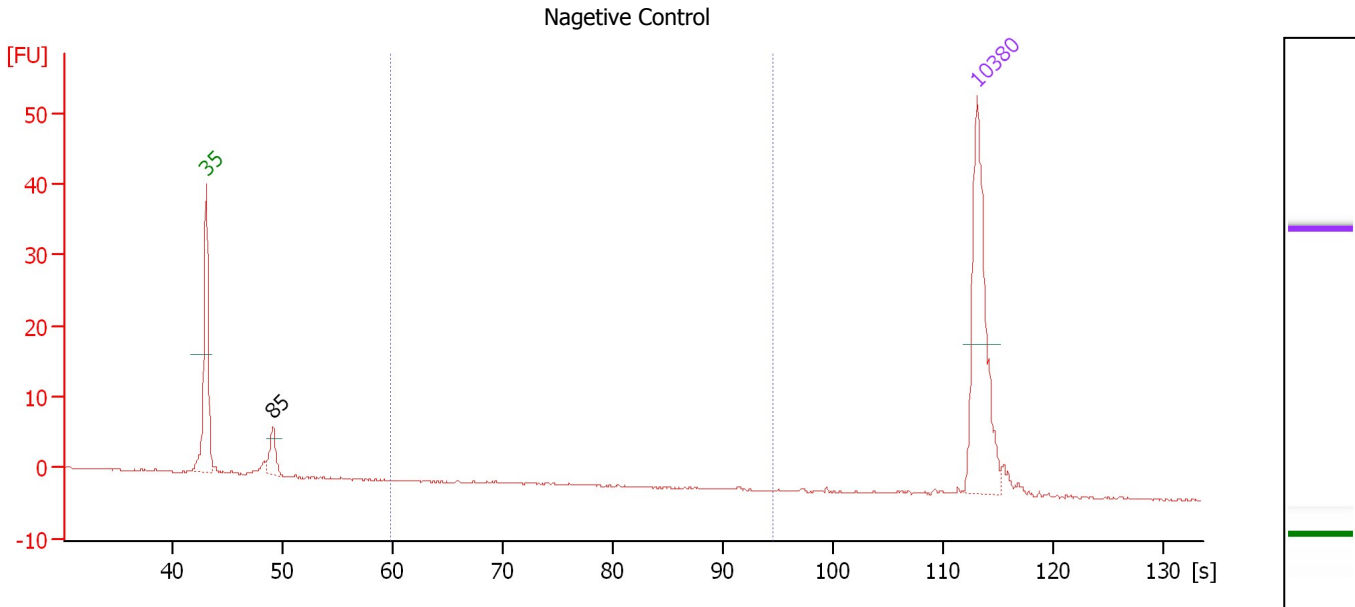
Region table for sample 10 : PB 21312 cDNA Lib

From [s]	To [s]	Average Size [bp]	Molarity [pmol/l]	Conc. [pg/μl]	Corr. Area % of Total	Size distribution in CV [%]	Color
59.81	94.47	381	5.3	1.33	0.7	1	5.9

Assay Class: High Sensitivity DNA Assay
 Data Path: C:\...ents and Settings\Bioanalyzer\2013-10-22\2013-10-22_006.xad

Created: 10/22/2013 4:33:30 PM
 Modified: 10/22/2013 5:31:13 PM

Electropherogram Summary Continued ...



Overall Results for sample 11 : Nagetive Control

Number of peaks found: 1 Corr. Area 1: 0.0
 Noise: 0.1

Peak table for sample 11 : Nagetive Control

Peak	Size [bp]	Conc. [pg/μl]	Molarity [pmol/l]	Observations
1	35	125.00	5,411.3	Lower Marker
2	85	19.19	342.3	
3	10,380	75.00	10.9	Upper Marker

Region table for sample 11 : Nagetive Control

From [s]	To [s]	Average Size [bp]	Molarity [pmol/l]	Conc. [pg/μl]	Corr. Area	% of Total	Size distribution in CV [%]	Color
59.81	94.47	777	0.0	0.01	0.0	0	0.4	Blue

Assay Class: High Sensitivity DNA Assay
Data Path: C:\...ents and Settings\Bioanalyzer\2013-10-22\2013-10-22_006.xad

Created: 10/22/2013 4:33:30 PM
Modified: 10/22/2013 5:31:13 PM

Gel Image

