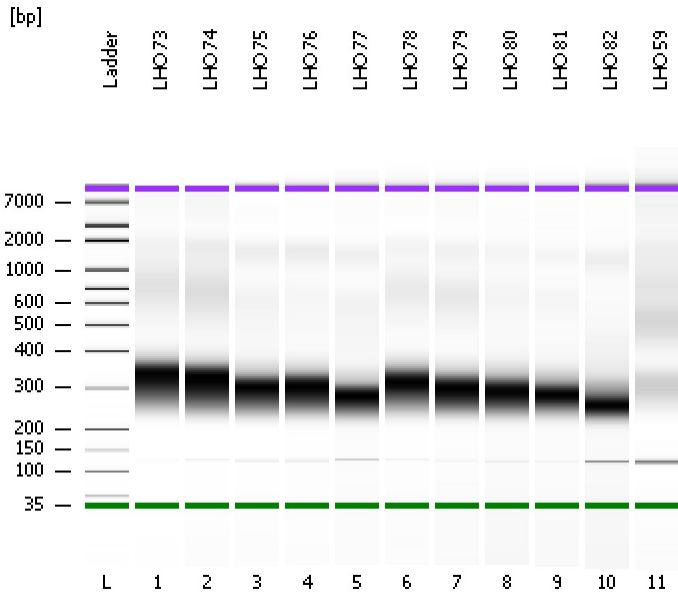


Assay Class: High Sensitivity DNA Assay
Data Path: C:\...ents and Settings\Bioanalyzer\2013-10-23\2013-10-23_001.xad

Created: 10/23/2013 9:23:19 AM
Modified: 10/23/2013 11:12:21 AM

Electrophoresis File Run Summary



Instrument Information:

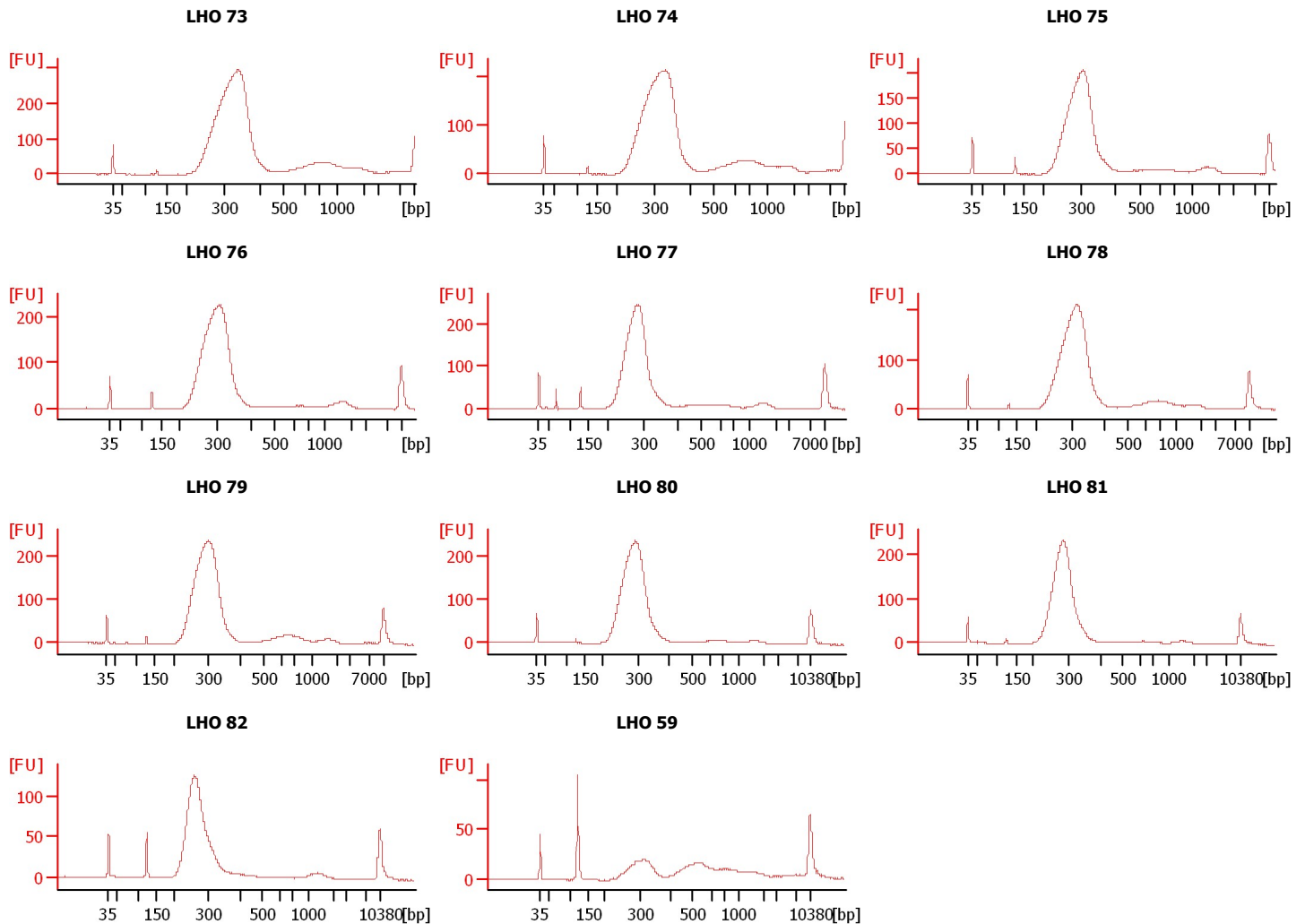
Instrument Name: DE13701086 Firmware: C.01.069
Serial#: DE13701086 Type: G2938B

Assay Information:

Assay Origin Path: C:\Program Files\Agilent\2100 bioanalyzer\2100 expert\assays\dsDNA\High Sensitivity DNA.xsy
Assay Class: High Sensitivity DNA Assay
Version: 1.03
Assay Comments: Copyright © 2003-2010 Agilent Technologies

Chip Information:

Chip Lot #:
Reagent Kit Lot #:
Chip Comments:



Assay Class: High Sensitivity DNA Assay
 Data Path: C:\...ents and Settings\Bioanalyzer\2013-10-23\2013-10-23_001.xad

Created: 10/23/2013 9:23:19 AM
 Modified: 10/23/2013 11:12:21 AM

Electrophoresis File Run Summary (Chip Summary)

Sample Name	Sample Comment	Rest. Digest	Status	Observation	Result Label	Result Color
LHO 73		<input type="checkbox"/>	✓			
LHO 74		<input type="checkbox"/>	✓			
LHO 75		<input type="checkbox"/>	✓			
LHO 76		<input type="checkbox"/>	✓			
LHO 77		<input type="checkbox"/>	✓			
LHO 78		<input type="checkbox"/>	✓			
LHO 79		<input type="checkbox"/>	✓			
LHO 80		<input type="checkbox"/>	✓			
LHO 81		<input type="checkbox"/>	✓			
LHO 82		<input type="checkbox"/>	✓			
LHO 59		<input type="checkbox"/>	✓			
Ladder		<input type="checkbox"/>	✓			

Chip Lot #

Reagent Kit Lot #

Chip Comments :

Assay Class: High Sensitivity DNA Assay
Data Path: C:\...ents and Settings\Bioanalyzer\2013-10-23\2013-10-23_001.xad

Created: 10/23/2013 9:23:19 AM
Modified: 10/23/2013 11:12:21 AM

Electrophoresis Assay Details

General Analysis Settings

Number of Available Sample and Ladder Wells (Max.) : 12
Minimum Visible Range [s] : 32
Maximum Visible Range [s] : 138
Start Analysis Time Range [s] : 33
End Analysis Time Range [s] : 137.5
Ladder Concentration [pg/ μ l] : 1950
Uses Standard Area for Ladder Fragments
Lower Marker Concentration [pg/ μ l] : 125
Upper Marker Concentration [pg/ μ l] : 75
Used Upper Marker for Quantitation
Standard Curve Fit is Point to Point
Show Data Aligned to Lower and Upper Marker

Integrator Settings

Integration Start Time [s] : 33.05
Integration End Time [s] : 137
Slope Threshold : 0.8
Height Threshold [FU] : 5
Area Threshold : 0.1
Width Threshold [s] : 0.6
Baseline Plateau [s] : 0.5

Filter Settings

Filter Width [s] : 0.5
Polynomial Order : 4

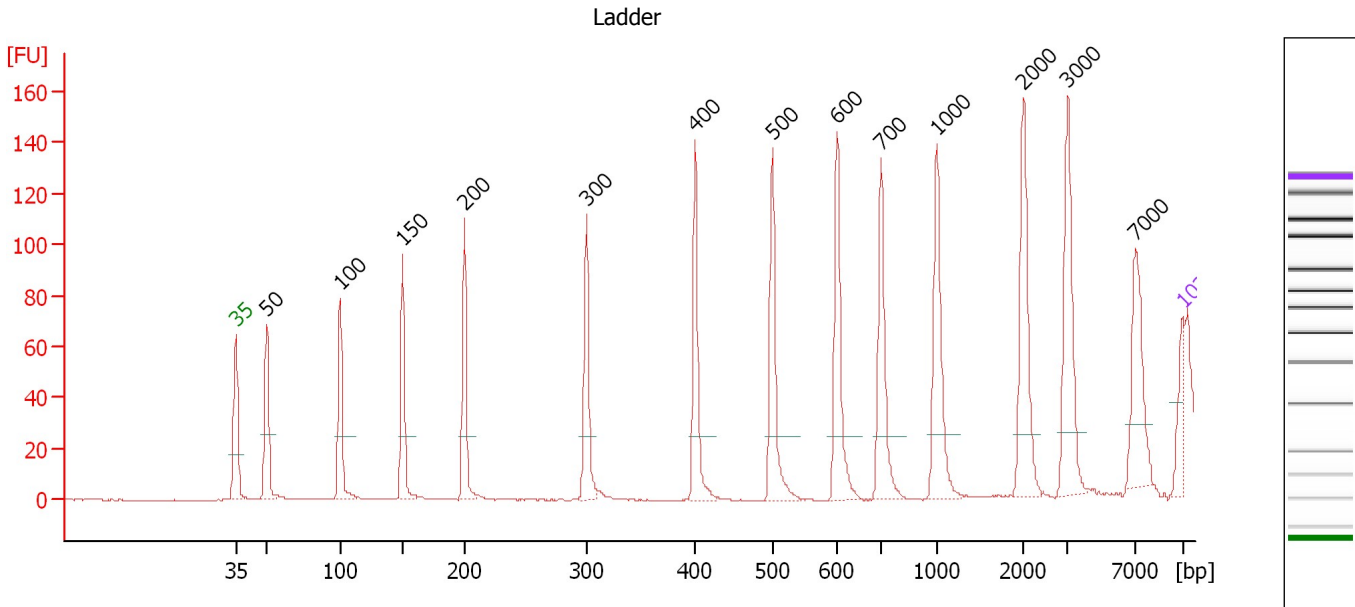
Ladder

Ladder Peak	Size	Area
1	35	160
2	50	210
3	100	208
4	150	221
5	200	242
6	300	270
7	400	305
8	500	306
9	600	336
10	700	321
11	1000	366
12	2000	413
13	3000	411
14	7000	400
15	10380	214

Assay Class: High Sensitivity DNA Assay
 Data Path: C:\...ents and Settings\Bioanalyzer\2013-10-23\2013-10-23_001.xad

Created: 10/23/2013 9:23:19 AM
 Modified: 10/23/2013 11:12:21 AM

Electropherogram Summary



Overall Results for Ladder

Noise: 0.1

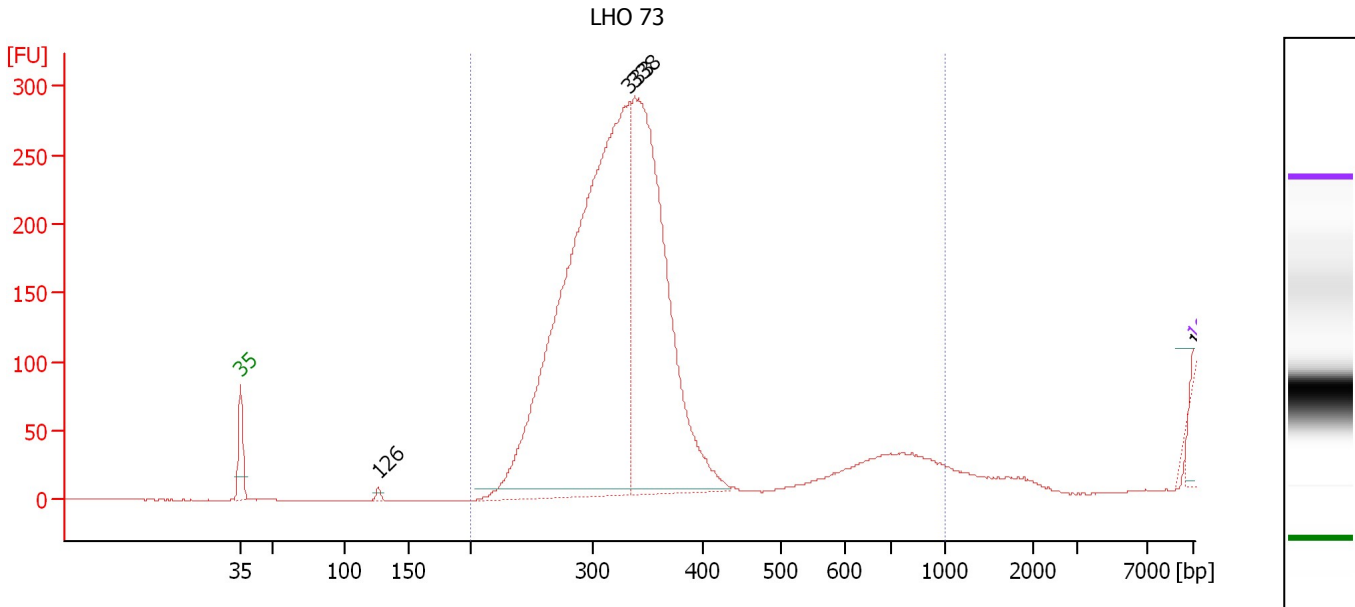
Peak table for Ladder

Peak	Size [bp]	Conc. [pg/μl]	Molarity [pmol/l]	Observations
1	35	125.00	5,411.3	Lower Marker
2	50	150.00	4,545.5	Ladder Peak
3	100	150.00	2,272.7	Ladder Peak
4	150	150.00	1,515.2	Ladder Peak
5	200	150.00	1,136.4	Ladder Peak
6	300	150.00	757.6	Ladder Peak
7	400	150.00	568.2	Ladder Peak
8	500	150.00	454.5	Ladder Peak
9	600	150.00	378.8	Ladder Peak
10	700	150.00	324.7	Ladder Peak
11	1,000	150.00	227.3	Ladder Peak
12	2,000	150.00	113.6	Ladder Peak
13	3,000	150.00	75.8	Ladder Peak
14	7,000	150.00	32.5	Ladder Peak
15	10,380	75.00	10.9	Upper Marker

Assay Class: High Sensitivity DNA Assay
 Data Path: C:\...ents and Settings\Bioanalyzer\2013-10-23\2013-10-23_001.xad

Created: 10/23/2013 9:23:19 AM
 Modified: 10/23/2013 11:12:21 AM

Electropherogram Summary Continued ...



Overall Results for sample 1 : LHO 73

Number of peaks found: 4 Corr. Area 1: 3,050.4
 Noise: 0.2

Peak table for sample 1 : LHO 73

Peak	Size [bp]	Conc. [pg/μl]	Molarity [pmol/l]	Observations
1	35	125.00	5,411.3	Lower Marker
2	126	153.04	1,836.7	
3	333	33,546.65	152,594.6	
4	338	19,117.36	85,706.1	
5	10,380	75.00	10.9	Upper Marker
6	10,496	0.00	0.0	

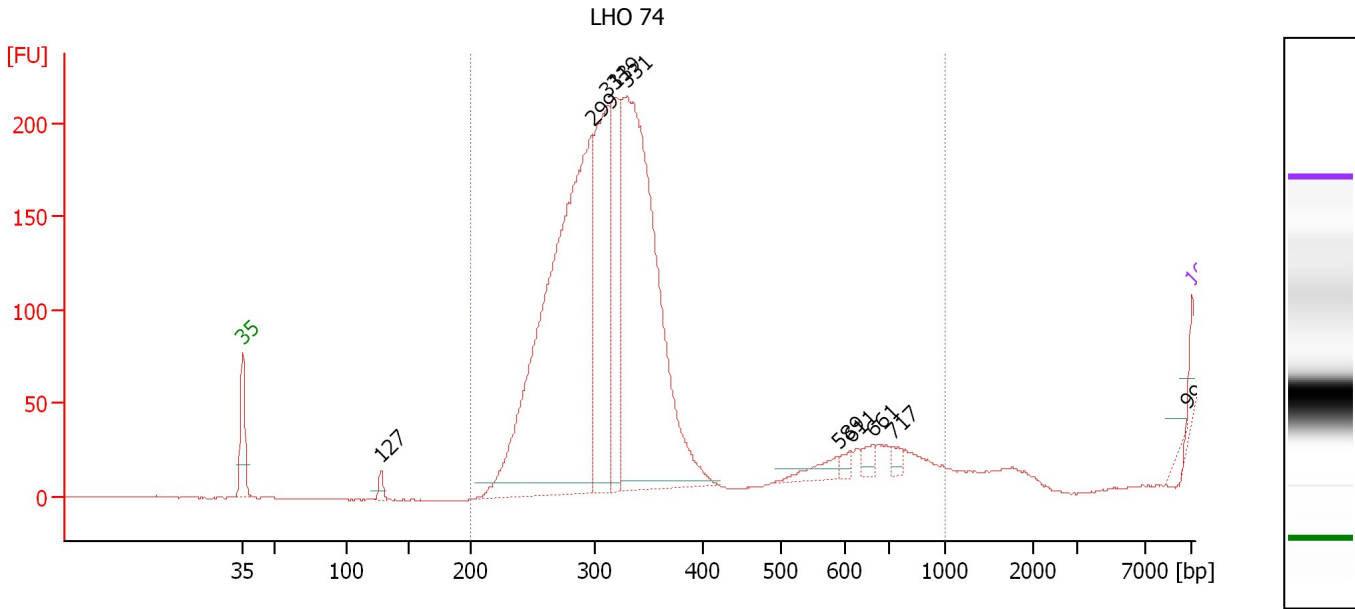
Region table for sample 1 : LHO 73

From [bp]	To [bp]	Average Size [bp]	Molarity [pmol/l]	Conc. [pg/μl]	Corr. Area	% of Total	Size distribution in CV [%]	Color
200	1,000	319	221,982.0	46,058.97	3,050.4	100	10.5	Blue

Assay Class: High Sensitivity DNA Assay
 Data Path: C:\...ents and Settings\Bioanalyzer\2013-10-23\2013-10-23_001.xad

Created: 10/23/2013 9:23:19 AM
 Modified: 10/23/2013 11:12:21 AM

Electropherogram Summary Continued ...



Overall Results for sample 2 : LHO 74

Number of peaks found: 10 Corr. Area 1: 2,246.8
 Noise: 0.4

Peak table for sample 2 : LHO 74

Peak	Size [bp]	Conc. [pg/μl]	Molarity [pmol/l]	Observations
1	35	125.00	5,411.3	Lower Marker
2	127	44.68	531.4	
3	299	3,339.70	16,921.7	
4	313	1,135.35	5,503.0	
5	319	638.13	3,026.8	
6	331	2,734.41	12,529.2	
7	589	79.49	204.6	
8	611	34.89	86.5	
9	661	48.80	111.8	
10	717	39.80	84.1	
11	9,954	0.32	0.0	
12	10,380	75.00	10.9	Upper Marker

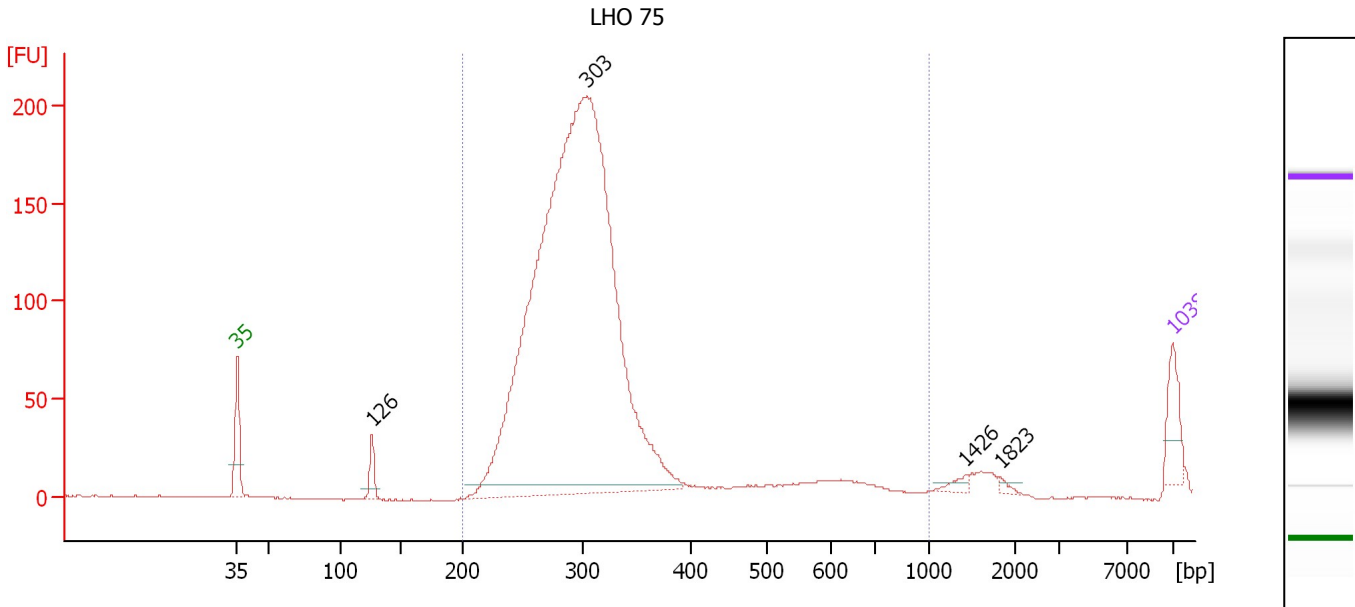
Region table for sample 2 : LHO 74

From [bp]	To [bp]	Average Size [bp]	Molarity [pmol/l]	Conc. [pg/μl]	Corr. Area	% of Total	Size distribution in CV [%]	Color
200	1,000	308	32,118.9	6,449.04	2,246.8	100	10.5	Blue

Assay Class: High Sensitivity DNA Assay
 Data Path: C:\...ents and Settings\Bioanalyzer\2013-10-23\2013-10-23_001.xad

Created: 10/23/2013 9:23:19 AM
 Modified: 10/23/2013 11:12:21 AM

Electropherogram Summary Continued ...



Overall Results for sample 3 : LHO 75

Number of peaks found: 4 Corr. Area 1: 2,101.8
 Noise: 0.4

Peak table for sample 3 : LHO 75

Peak	Size [bp]	Conc. [pg/μl]	Molarity [pmol/l]	Observations
1	35	125.00	5,411.3	Lower Marker
2	126	62.45	750.4	
3	303	4,032.91	20,175.6	
4	1,426	16.19	17.2	
5	1,823	8.00	6.7	
6	10,380	75.00	10.9	Upper Marker

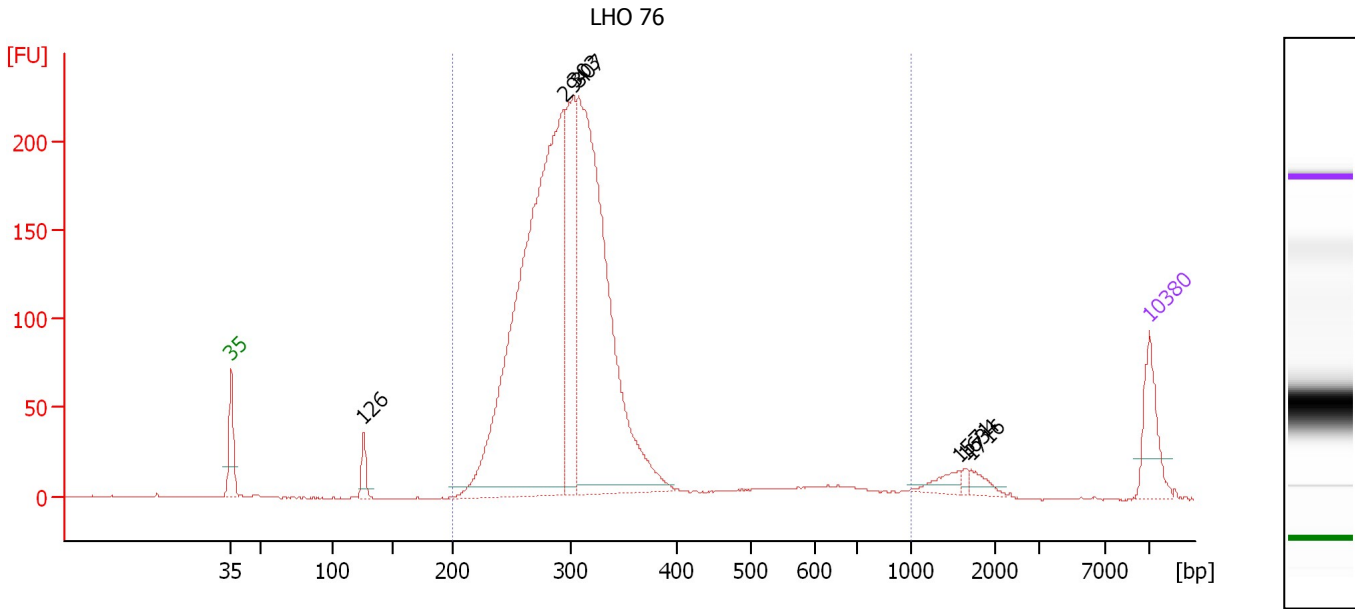
Region table for sample 3 : LHO 75

From [bp]	To [bp]	Average Size [bp]	Molarity [pmol/l]	Conc. [pg/μl]	Corr. Area	% of Total	Size distribution in CV [%]	Color
200	1,000	294	20,746.7	3,975.90	2,101.8	98	11.6	Blue

Assay Class: High Sensitivity DNA Assay
 Data Path: C:\...ents and Settings\Bioanalyzer\2013-10-23\2013-10-23_001.xad

Created: 10/23/2013 9:23:19 AM
 Modified: 10/23/2013 11:12:21 AM

Electropherogram Summary Continued ...



Overall Results for sample 4 : LHO 76

Number of peaks found: 7 Corr. Area 1: 2,696.9
 Noise: 0.2

Peak table for sample 4 : LHO 76

Peak	Size [bp]	Conc. [pg/μl]	Molarity [pmol/l]	Observations
1	35	125.00	5,411.3	Lower Marker
2	126	45.25	544.5	
3	294	1,637.53	8,439.8	
4	303	345.65	1,729.3	
5	307	1,175.52	5,794.3	
6	1,571	25.35	24.5	
7	1,634	7.72	7.2	
8	1,716	20.31	17.9	
9	10,380	75.00	10.9	Upper Marker

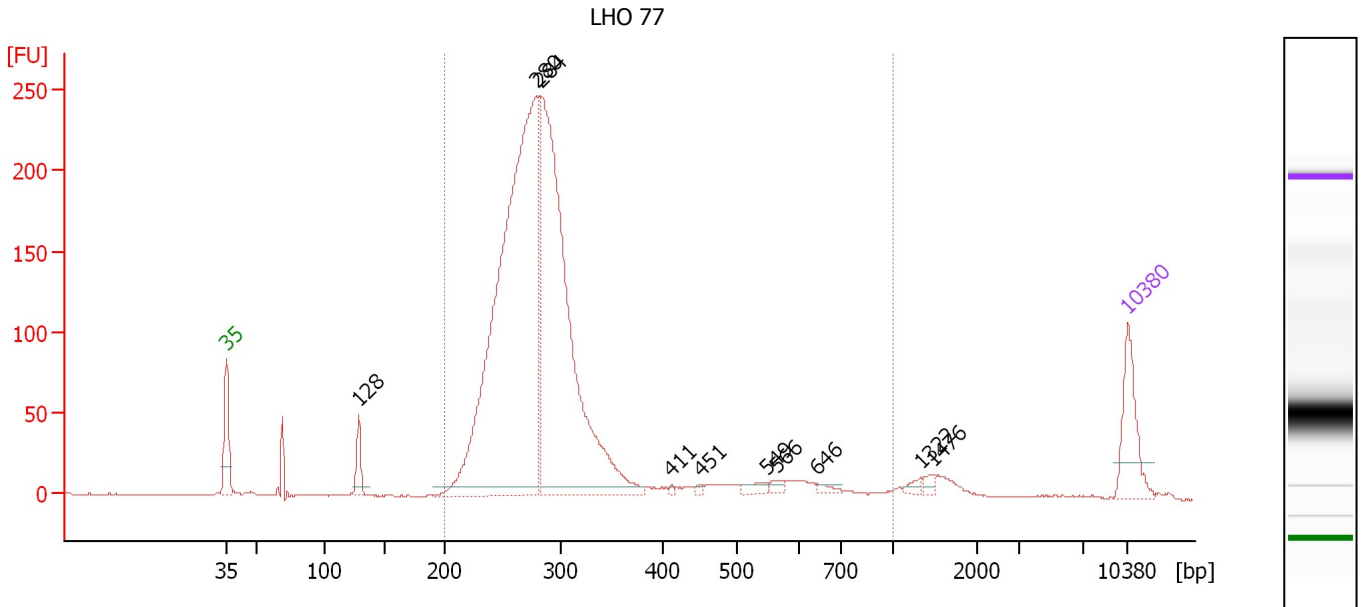
Region table for sample 4 : LHO 76

From [bp]	To [bp]	Average Size [bp]	Molarity [pmol/l]	Conc. [pg/μl]	Corr. Area	% of Total	Size distribution in CV [%]	Color
200	1,000	310	17,254.9	3,369.46	2,696.9	96	25.7	Blue

Assay Class: High Sensitivity DNA Assay
 Data Path: C:\...ents and Settings\Bioanalyzer\2013-10-23\2013-10-23_001.xad

Created: 10/23/2013 9:23:19 AM
 Modified: 10/23/2013 11:12:21 AM

Electropherogram Summary Continued ...



Overall Results for sample 5 : LHO 77

Number of peaks found: 10 Corr. Area 1: 2,561.3
 Noise: 0.2

Peak table for sample 5 : LHO 77

Peak	Size [bp]	Conc. [pg/μl]	Molarity [pmol/l]	Observations
1	35	125.00	5,411.3	Lower Marker
2	128	48.54	574.7	
3	280	1,395.88	7,565.0	
4	284	1,041.15	5,551.5	
5	411	3.06	11.3	
6	451	4.43	14.9	
7	549	14.32	39.5	
8	566	9.68	25.9	
9	646	8.18	19.2	
10	1,322	8.34	9.6	
11	1,476	9.08	9.3	
12	10,380	75.00	10.9	Upper Marker

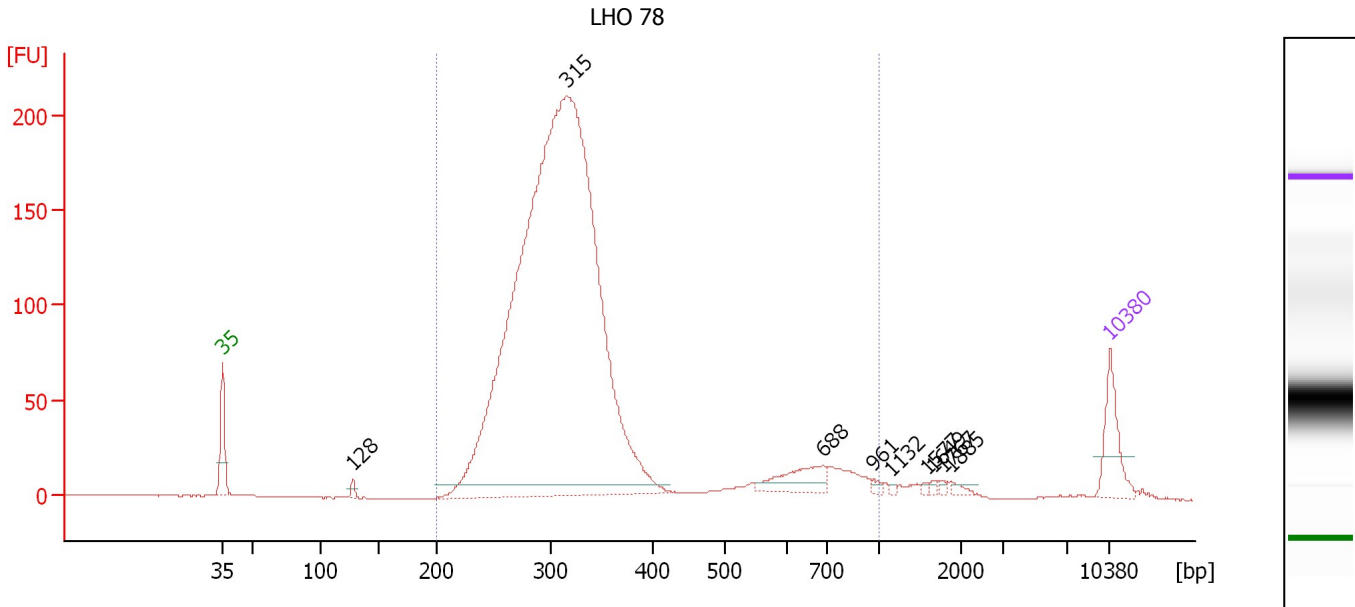
Region table for sample 5 : LHO 77

From [bp]	To [bp]	Average Size [bp]	Molarity [pmol/l]	Conc. [pg/μl]	Corr. Area	% of Total	Size distribution in CV [%]	Color
200	1,000	302	14,300.9	2,677.24	2,561.3	94	30.2	Blue

Assay Class: High Sensitivity DNA Assay
 Data Path: C:\...ents and Settings\Bioanalyzer\2013-10-23\2013-10-23_001.xad

Created: 10/23/2013 9:23:19 AM
 Modified: 10/23/2013 11:12:21 AM

Electropherogram Summary Continued ...



Overall Results for sample 6 : LHO 78

Number of peaks found: 9 Corr. Area 1: 2,572.3
 Noise: 0.2

Peak table for sample 6 : LHO 78

Peak	Size [bp]	Conc. [pg/μl]	Molarity [pmol/l]	Observations
1	35	125.00	5,411.3	Lower Marker
2	128	13.50	160.0	
3	315	3,313.81	15,955.3	
4	688	78.95	173.9	
5	961	7.54	11.9	
6	1,132	3.58	4.8	
7	1,577	3.80	3.7	
8	1,649	4.91	4.5	
9	1,767	5.07	4.3	
10	1,885	8.36	6.7	
11	10,380	75.00	10.9	Upper Marker

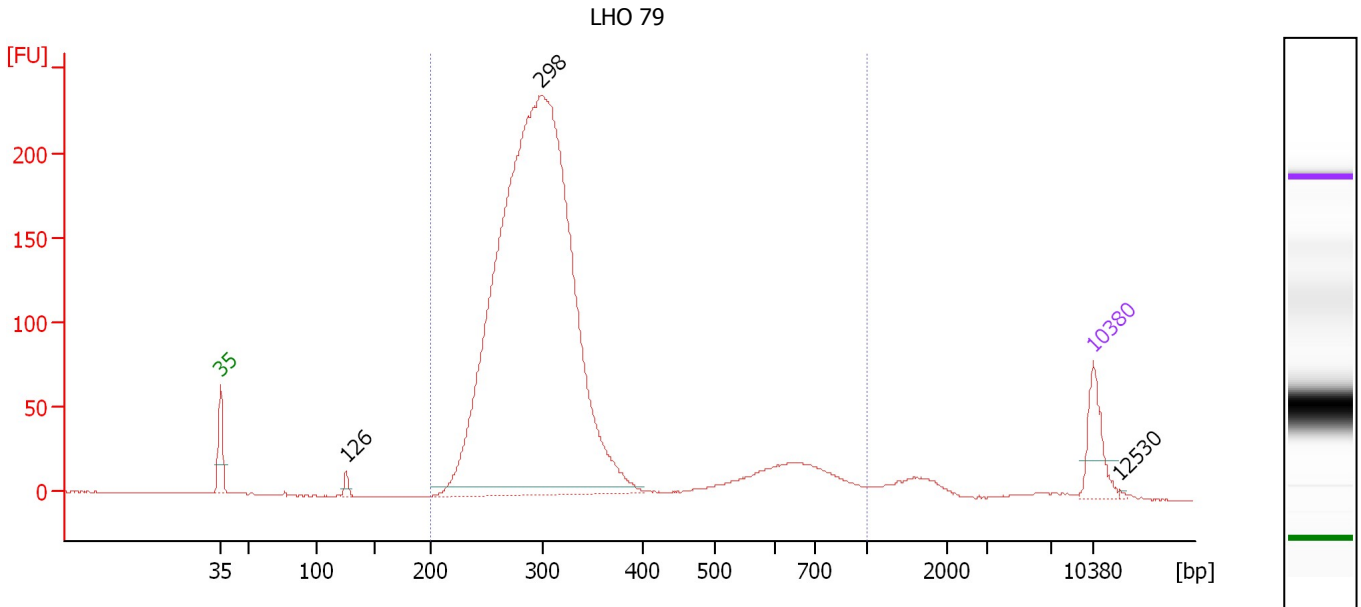
Region table for sample 6 : LHO 78

From [bp]	To [bp]	Average Size [bp]	Molarity [pmol/l]	Conc. [pg/μl]	Corr. Area	% of Total	Size distribution in CV [%]	Color
200	1,000	341	17,770.8	3,662.34	2,572.3	97	35.1	Blue

Assay Class: High Sensitivity DNA Assay
 Data Path: C:\...ents and Settings\Bioanalyzer\2013-10-23\2013-10-23_001.xad

Created: 10/23/2013 9:23:19 AM
 Modified: 10/23/2013 11:12:21 AM

Electropherogram Summary Continued ...



Overall Results for sample 7 : LHO 79

Number of peaks found: 3 Corr. Area 1: 2,813.5
 Noise: 0.3

Peak table for sample 7 : LHO 79

Peak	Size [bp]	Conc. [pg/μl]	Molarity [pmol/l]	Observations
1	35	125.00	5,411.3	Lower Marker
2	126	18.87	226.7	
3	298	3,311.68	16,846.7	
4	10,380	75.00	10.9	Upper Marker
5	12,530	0.00	0.0	

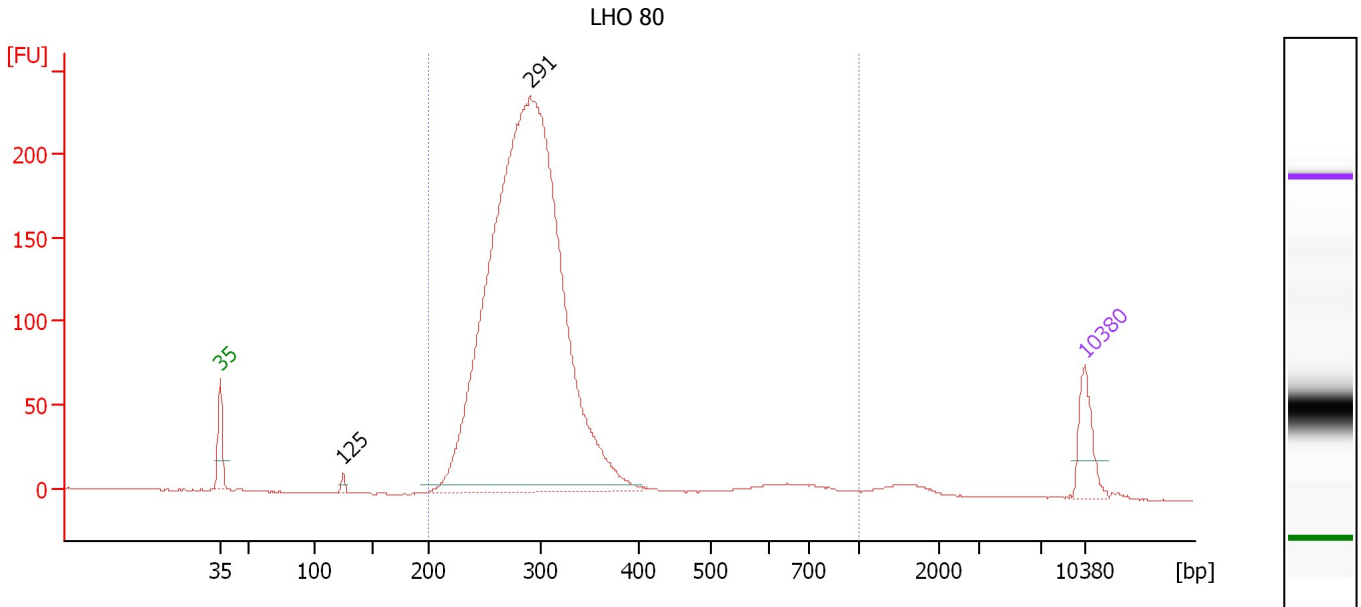
Region table for sample 7 : LHO 79

From [bp]	To [bp]	Average Size [bp]	Molarity [pmol/l]	Conc. [pg/μl]	Corr. Area	% of Total	Size distribution in CV [%]	Color
200	1,000	329	18,270.6	3,622.62	2,813.5	96	35.9	Blue

Assay Class: High Sensitivity DNA Assay
 Data Path: C:\...ents and Settings\Bioanalyzer\2013-10-23\2013-10-23_001.xad

Created: 10/23/2013 9:23:19 AM
 Modified: 10/23/2013 11:12:21 AM

Electropherogram Summary Continued ...



Overall Results for sample 8 : LHO 80

Number of peaks found: 2 Corr. Area 1: 2,601.6
 Noise: 0.2

Peak table for sample 8 : LHO 80

Peak	Size [bp]	Conc. [pg/μl]	Molarity [pmol/l]	Observations
1	35	125.00	5,411.3	Lower Marker
2	125	14.10	171.2	
3	291	3,352.33	17,459.6	
4	10,380	75.00	10.9	Upper Marker

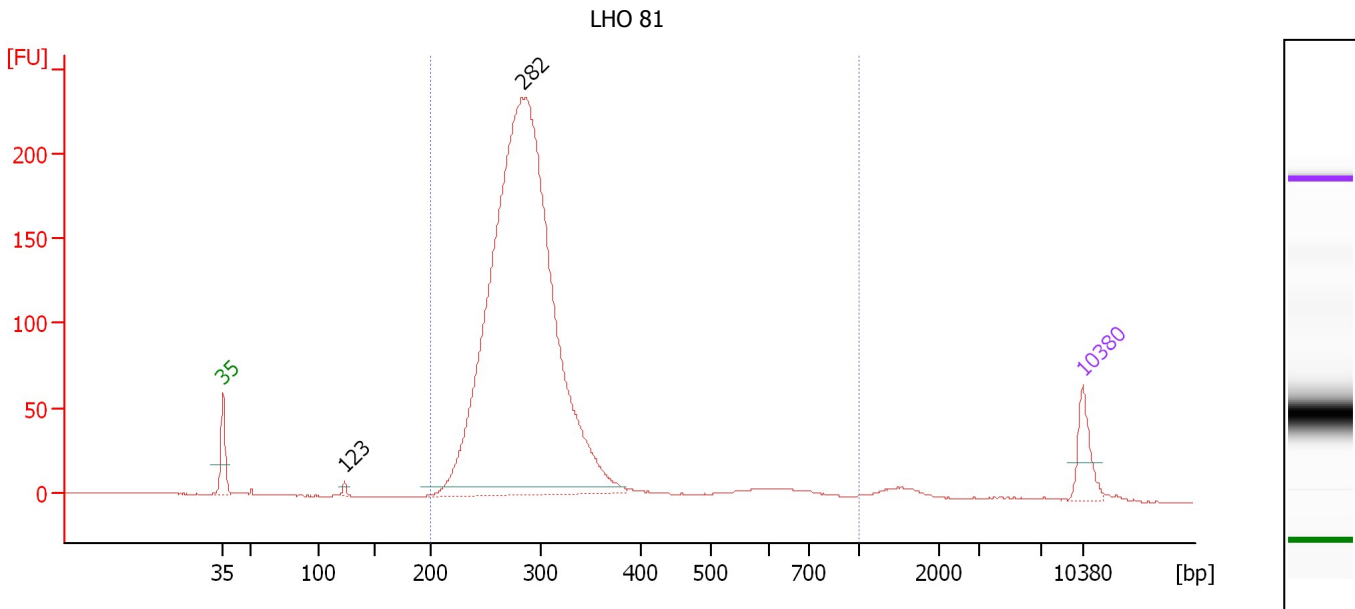
Region table for sample 8 : LHO 80

From [bp]	To [bp]	Average Size [bp]	Molarity [pmol/l]	Conc. [pg/μl]	Corr. Area	% of Total	Size distribution in CV [%]	Color
200	1,000	304	18,222.9	3,486.63	2,601.6	98	26.8	Blue

Assay Class: High Sensitivity DNA Assay
 Data Path: C:\...ents and Settings\Bioanalyzer\2013-10-23\2013-10-23_001.xad

Created: 10/23/2013 9:23:19 AM
 Modified: 10/23/2013 11:12:21 AM

Electropherogram Summary Continued ...



Overall Results for sample 9 : LHO 81

Number of peaks found: 2 Corr. Area 1: 2,250.9
 Noise: 0.1

Peak table for sample 9 : LHO 81

Peak	Size [bp]	Conc. [pg/μl]	Molarity [pmol/l]	Observations
1	35	125.00	5,411.3	Lower Marker
2	123	13.75	168.7	
3	282	3,758.76	20,168.9	
4	10,380	75.00	10.9	Upper Marker

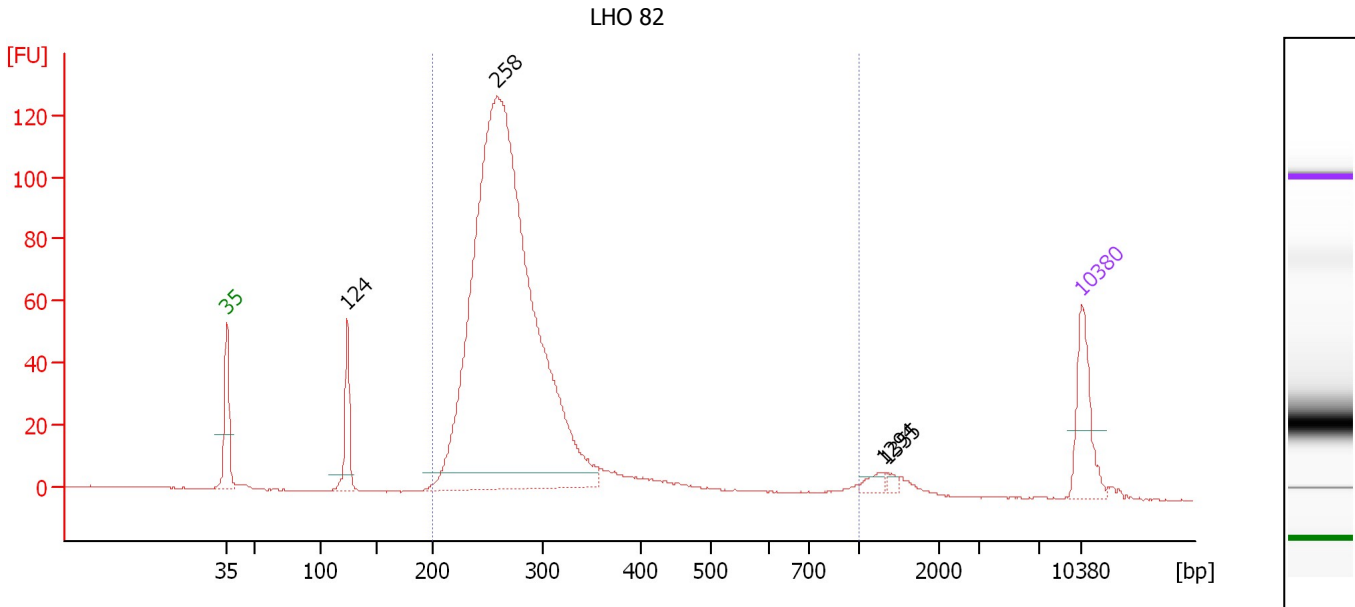
Region table for sample 9 : LHO 81

From [bp]	To [bp]	Average Size [bp]	Molarity [pmol/l]	Conc. [pg/μl]	Corr. Area	% of Total	Size distribution in CV [%]	Color
200	1,000	300	20,853.0	3,941.68	2,250.9	97	26.1	Blue

Assay Class: High Sensitivity DNA Assay
 Data Path: C:\...ents and Settings\Bioanalyzer\2013-10-23\2013-10-23_001.xad

Created: 10/23/2013 9:23:19 AM
 Modified: 10/23/2013 11:12:21 AM

Electropherogram Summary Continued ...



Overall Results for sample 10 : LHO 82

Number of peaks found: 4 Corr. Area 1: 1,225.1
 Noise: 0.2

Peak table for sample 10 : LHO 82

Peak	Size [bp]	Conc. [pg/μl]	Molarity [pmol/l]	Observations
1	35	125.00	5,411.3	Lower Marker
2	124	96.67	1,185.0	
3	258	1,965.43	11,552.6	
4	1,294	12.72	14.9	
5	1,355	7.04	7.9	
6	10,380	75.00	10.9	Upper Marker

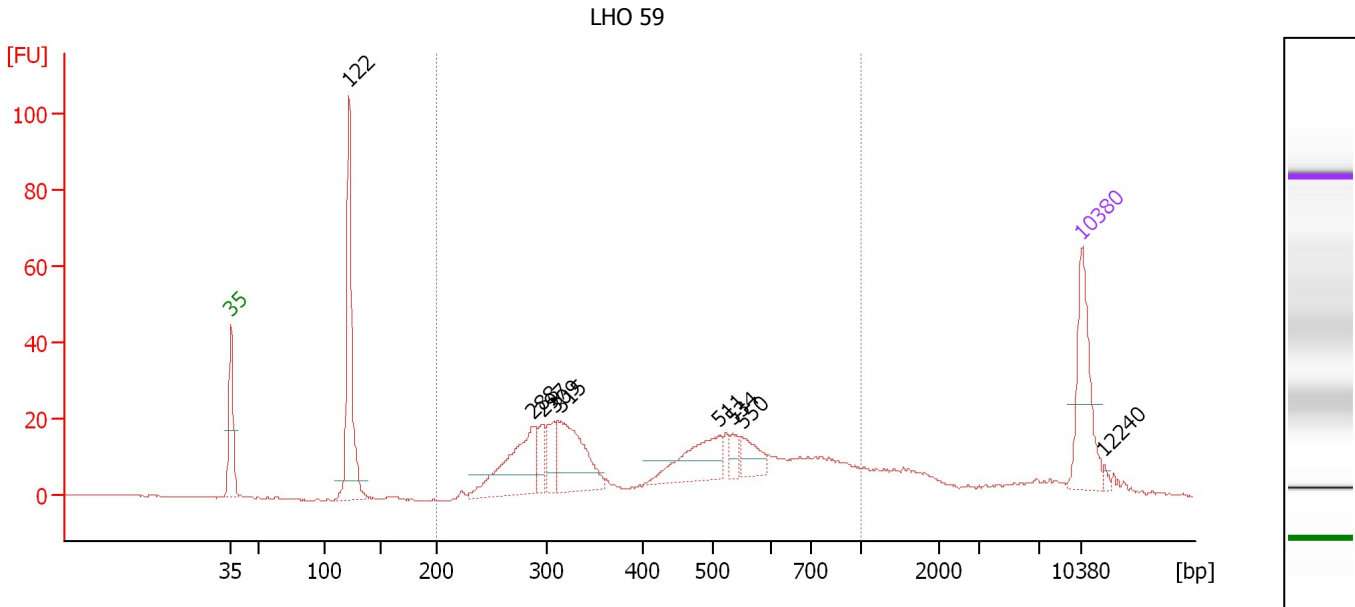
Region table for sample 10 : LHO 82

From [bp]	To [bp]	Average Size [bp]	Molarity [pmol/l]	Conc. [pg/μl]	Corr. Area	% of Total	Size distribution in CV [%]	Color
200	1,000	287	11,640.4	2,089.78	1,225.1	92	29.5	Blue

Assay Class: High Sensitivity DNA Assay
 Data Path: C:\...ents and Settings\Bioanalyzer\2013-10-23\2013-10-23_001.xad

Created: 10/23/2013 9:23:19 AM
 Modified: 10/23/2013 11:12:21 AM

Electropherogram Summary Continued ...



Overall Results for sample 11 : LHO 59

Number of peaks found: 9 Corr. Area 1: 431.8
 Noise: 0.1

Peak table for sample 11 : LHO 59

Peak	Size [bp]	Conc. [pg/μl]	Molarity [pmol/l]	Observations
1	35	125.00	5,411.3	Lower Marker
2	122	218.40	2,716.0	
3	288	130.32	686.0	
4	297	30.30	154.8	
5	309	40.15	197.0	
6	315	113.63	547.0	
7	511	80.51	238.9	
8	534	15.97	45.3	
9	550	32.00	88.1	
10	10,380	75.00	10.9	Upper Marker
11	12,240	0.00	0.0	

Region table for sample 11 : LHO 59

From [bp]	To [bp]	Average Size [bp]	Molarity [pmol/l]	Conc. [pg/μl]	Corr. Area	% of Total	Size distribution in CV [%]	Color
200	1,000	474	2,683.2	689.01	431.8	70	38.1	Blue

Assay Class: High Sensitivity DNA Assay
Data Path: C:\...ents and Settings\Bioanalyzer\2013-10-23\2013-10-23_001.xad

Created: 10/23/2013 9:23:19 AM
Modified: 10/23/2013 11:12:21 AM

Gel Image

