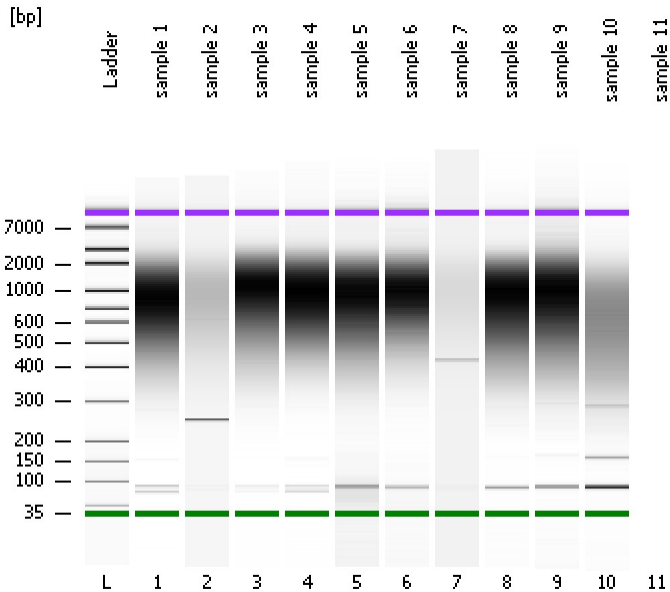


Assay Class: High Sensitivity DNA Assay
Data Path: C:\...ents and Settings\Bioanalyzer\2013-10-23\2013-10-23_002.xad

Created: 10/23/2013 10:20:10 AM
Modified: 10/23/2013 11:01:50 AM

Electrophoresis File Run Summary



Instrument Information:

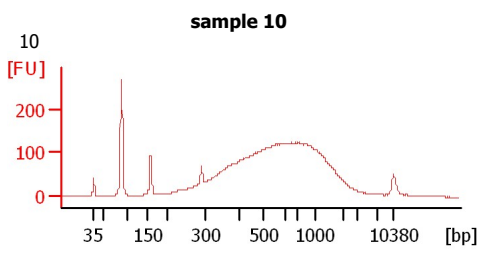
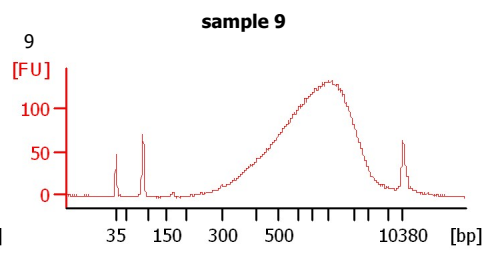
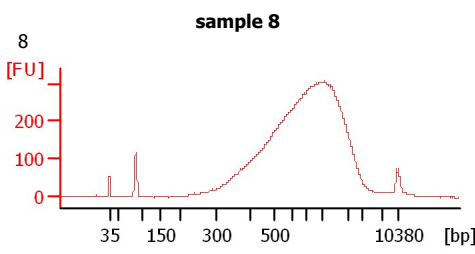
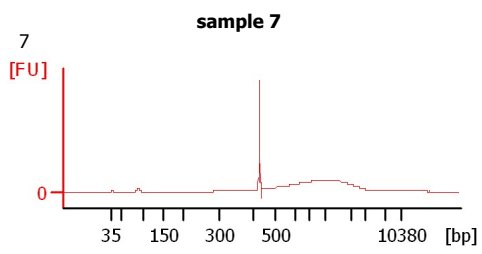
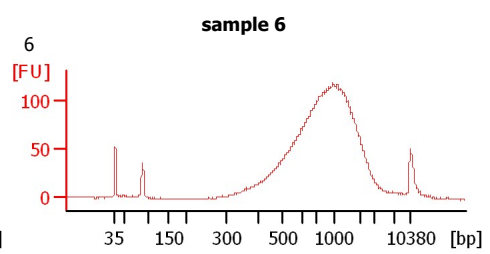
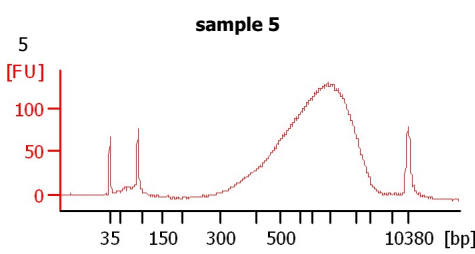
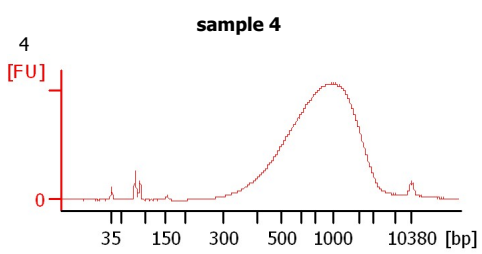
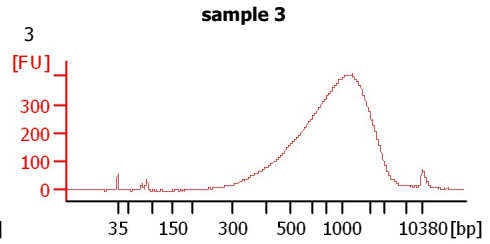
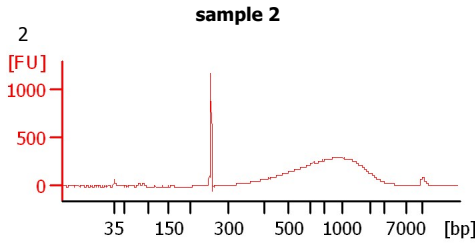
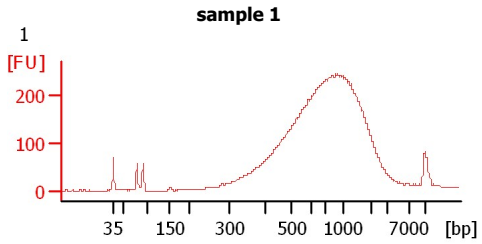
Instrument Name: DE13701086 Firmware: C.01.069
Serial#: DE13701086 Type: G2938B

Assay Information:

Assay Origin Path: C:\Program Files\Agilent\2100 bioanalyzer\2100 expert\assays\dsDNA\High Sensitivity DNA.xsy
Assay Class: High Sensitivity DNA Assay
Version: 1.03
Assay Comments: Copyright © 2003-2010 Agilent Technologies

Chip Information:

Chip Lot #:
Reagent Kit Lot #:
Chip Comments:



Assay Class: High Sensitivity DNA Assay
 Data Path: C:\...ents and Settings\Bioanalyzer\2013-10-23\2013-10-23_002.xad

Created: 10/23/2013 10:20:10 AM
 Modified: 10/23/2013 11:01:50 AM

Electrophoresis File Run Summary (Chip Summary)

Sample Name	Sample Comment	Rest. Digest	Status	Observation	Result Label	Result Color
sample 1	1	<input type="checkbox"/>	✓			
sample 2	2	<input type="checkbox"/>	✓			
sample 3	3	<input type="checkbox"/>	✓			
sample 4	4	<input type="checkbox"/>	✓			
sample 5	5	<input type="checkbox"/>	✓			
sample 6	6	<input type="checkbox"/>	✓			
sample 7	7	<input type="checkbox"/>	✓			
sample 8	8	<input type="checkbox"/>	✓			
sample 9	9	<input type="checkbox"/>	✓			
sample 10	10	<input type="checkbox"/>	✓			
sample 11		<input type="checkbox"/>	✓			
Ladder		<input type="checkbox"/>	✓			

Chip Lot #

Reagent Kit Lot #

Chip Comments :

Assay Class: High Sensitivity DNA Assay
Data Path: C:\...ents and Settings\Bioanalyzer\2013-10-23\2013-10-23_002.xad

Created: 10/23/2013 10:20:10 AM
Modified: 10/23/2013 11:01:50 AM

Electrophoresis Assay Details

General Analysis Settings

Number of Available Sample and Ladder Wells (Max.) : 12
Minimum Visible Range [s] : 32
Maximum Visible Range [s] : 138
Start Analysis Time Range [s] : 33
End Analysis Time Range [s] : 137.5
Ladder Concentration [pg/μl] : 1950
Uses Standard Area for Ladder Fragments
Lower Marker Concentration [pg/μl] : 125
Upper Marker Concentration [pg/μl] : 75
Used Upper Marker for Quantitation
Standard Curve Fit is Point to Point
Show Data Aligned to Lower and Upper Marker

Integrator Settings

Integration Start Time [s] : 33.05
Integration End Time [s] : 137
Slope Threshold : 0.8
Height Threshold [FU] : 5
Area Threshold : 0.1
Width Threshold [s] : 0.6
Baseline Plateau [s] : 0.5

Filter Settings

Filter Width [s] : 0.5
Polynomial Order : 4

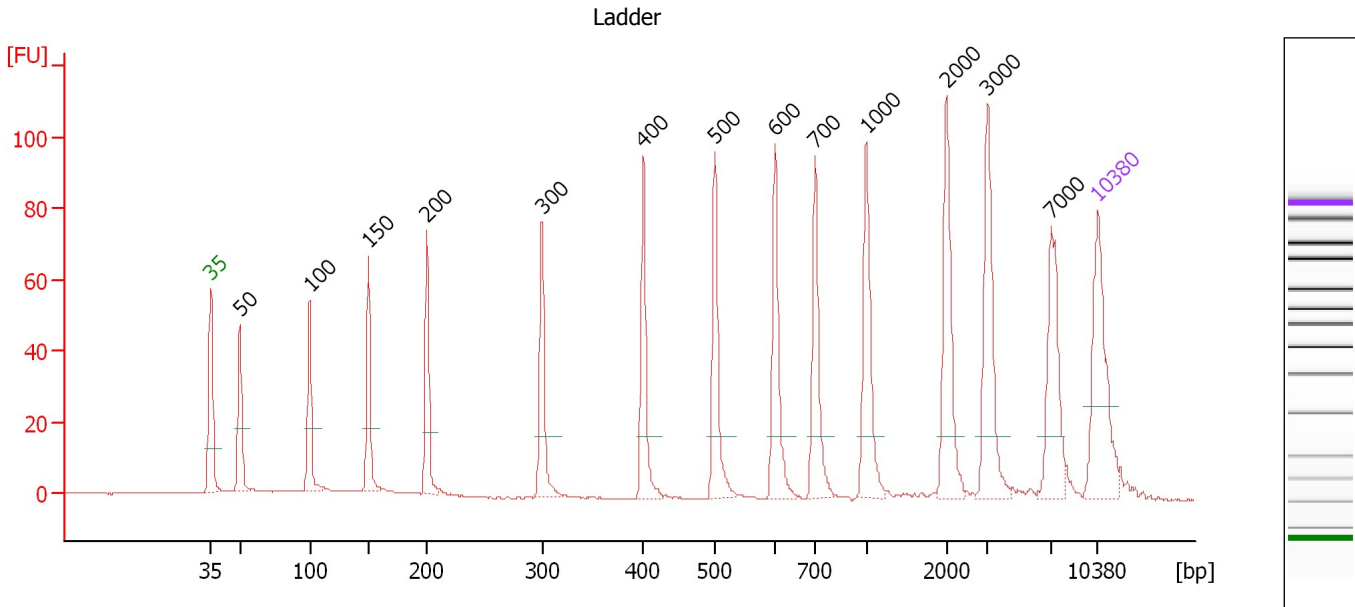
Ladder

Ladder Peak	Size	Area
1	35	160
2	50	210
3	100	208
4	150	221
5	200	242
6	300	270
7	400	305
8	500	306
9	600	336
10	700	321
11	1000	366
12	2000	413
13	3000	411
14	7000	400
15	10380	214

Assay Class: High Sensitivity DNA Assay
 Data Path: C:\...ents and Settings\Bioanalyzer\2013-10-23\2013-10-23_002.xad

Created: 10/23/2013 10:20:10 AM
 Modified: 10/23/2013 11:01:50 AM

Electropherogram Summary



Overall Results for Ladder

Noise: 0.2

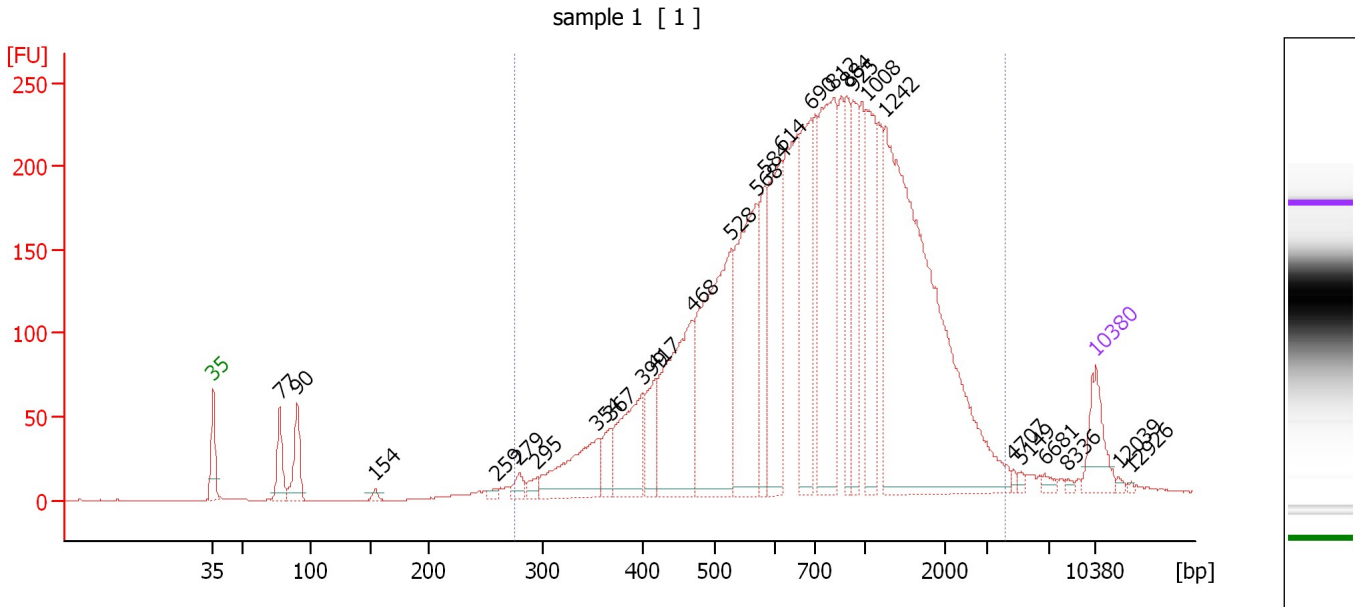
Peak table for Ladder

Peak	Size [bp]	Conc. [pg/μl]	Molarity [pmol/l]	Observations
1	35	125.00	5,411.3	Lower Marker
2	50	150.00	4,545.5	Ladder Peak
3	100	150.00	2,272.7	Ladder Peak
4	150	150.00	1,515.2	Ladder Peak
5	200	150.00	1,136.4	Ladder Peak
6	300	150.00	757.6	Ladder Peak
7	400	150.00	568.2	Ladder Peak
8	500	150.00	454.5	Ladder Peak
9	600	150.00	378.8	Ladder Peak
10	700	150.00	324.7	Ladder Peak
11	1,000	150.00	227.3	Ladder Peak
12	2,000	150.00	113.6	Ladder Peak
13	3,000	150.00	75.8	Ladder Peak
14	7,000	150.00	32.5	Ladder Peak
15	10,380	75.00	10.9	Upper Marker

Assay Class: High Sensitivity DNA Assay
 Data Path: C:\...ents and Settings\Bioanalyzer\2013-10-23\2013-10-23_002.xad

Created: 10/23/2013 10:20:10 AM
 Modified: 10/23/2013 11:01:50 AM

Electropherogram Summary Continued ...



Overall Results for sample 1 : sample 1

Number of peaks found: 27 Corr. Area 1: 5,298.4
 Noise: 0.2

Peak table for sample 1 : sample 1

Peak	Size [bp]	Conc. [pg/μl]	Molarity [pmol/l]	Observations
1	35	125.00	5,411.3	Lower Marker
2	77	101.21	1,983.7	
3	90	121.73	2,050.5	
4	154	12.03	118.2	
5	259	10.43	61.0	
6	279	29.72	161.2	
7	295	22.87	117.6	
8	354	204.91	877.8	
9	367	62.56	258.3	
10	399	202.94	771.3	
11	417	98.48	358.0	
12	468	397.97	1,289.1	
13	528	554.87	1,593.7	
14	568	429.36	1,144.5	
15	584	170.01	441.4	
16	614	303.23	748.3	
17	690	276.38	606.6	
18	812	438.34	817.7	
19	884	149.78	256.6	
20	925	167.37	274.1	
21	1,008	227.69	342.3	
22	1,242	1,076.47	1,313.0	
23	4,707	6.24	2.0	
24	5,149	6.08	1.8	
25	6,681	10.25	2.3	
26	8,336	4.79	0.9	

Assay Class: High Sensitivity DNA Assay
Data Path: C:\...ents and Settings\Bioanalyzer\2013-10-23\2013-10-23_002.xad

Created: 10/23/2013 10:20:10 AM
Modified: 10/23/2013 11:01:50 AM

Electropherogram Summary Continued ...**... Peak table for sample 1 : sample 1**

Peak	Size [bp]	Conc. [pg/μl]	Molarity [pmol/l]	Observations
27	10,380	75.00	10.9	Upper Marker
28	12,039	0.00	0.0	
29	12,926	0.00	0.0	

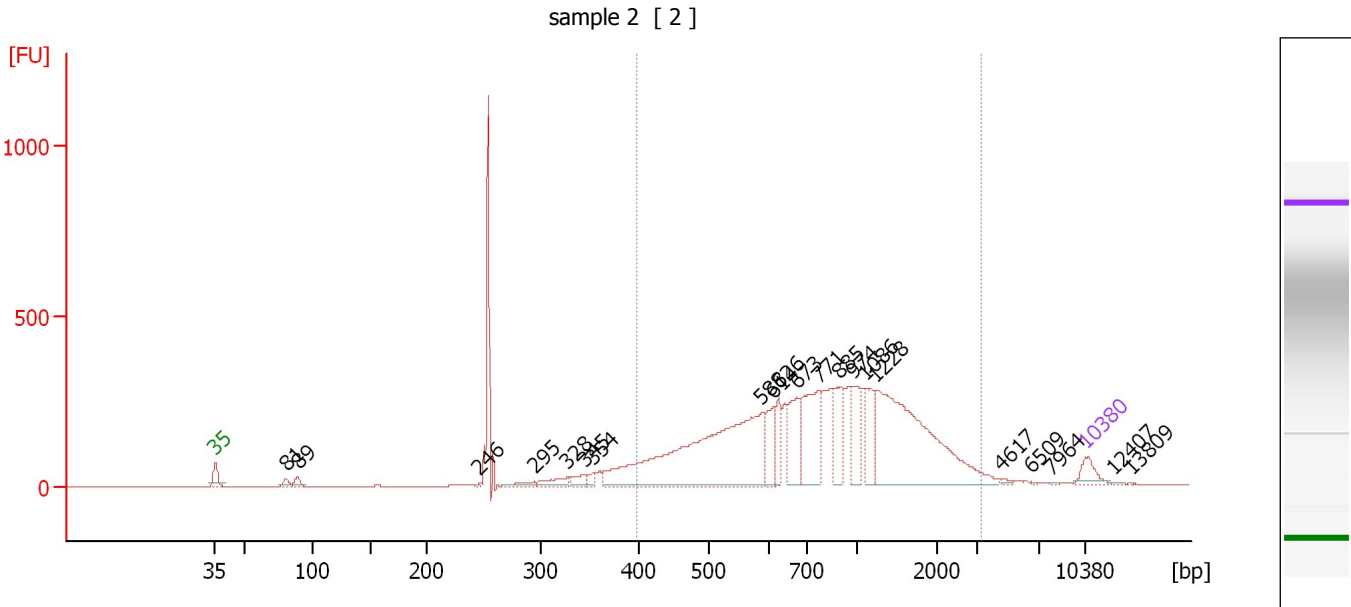
Region table for sample 1 : sample 1

From [bp]	To [bp]	Average Size [bp]	Molarity [pmol/l]	Conc. [pg/μl]	Corr. Area	% of Total	Size distribution in CV [%]	Color
276	4,213	923	12,930.4	5,609.16	5,298.4	96	60.5	■

Assay Class: High Sensitivity DNA Assay
 Data Path: C:\...ents and Settings\Bioanalyzer\2013-10-23\2013-10-23_002.xad

Created: 10/23/2013 10:20:10 AM
 Modified: 10/23/2013 11:01:50 AM

Electropherogram Summary Continued ...



Overall Results for sample 2 : sample 2

Number of peaks found: 21 Corr. Area 1: 5,865.4
 Noise: 0.6

Peak table for sample 2 : sample 2

Peak	Size [bp]	Conc. [pg/μl]	Molarity [pmol/l]	Observations
1	35	125.00	5,411.3	Lower Marker
2	81	38.49	721.0	
3	89	46.81	793.2	
4	246	6.11	37.5	
5	295	40.45	207.9	
6	328	79.77	368.8	
7	345	58.44	256.8	
8	354	37.37	160.0	
9	588	1,702.41	4,389.2	
10	614	194.85	480.9	
11	626	144.22	349.0	
12	673	280.14	630.3	
13	771	478.12	939.7	
14	885	227.90	390.2	
15	974	228.96	356.2	
16	1,086	227.60	317.5	
17	1,228	1,237.36	1,526.4	
18	4,617	11.34	3.7	
19	6,509	4.29	1.0	
20	7,964	5.04	1.0	
21	10,380	75.00	10.9	Upper Marker
22	12,407	0.00	0.0	
23	13,809	0.00	0.0	

Assay Class: High Sensitivity DNA Assay
Data Path: C:\...ents and Settings\Bioanalyzer\2013-10-23\2013-10-23_002.xad

Created: 10/23/2013 10:20:10 AM
Modified: 10/23/2013 11:01:50 AM

Electropherogram Summary Continued ...

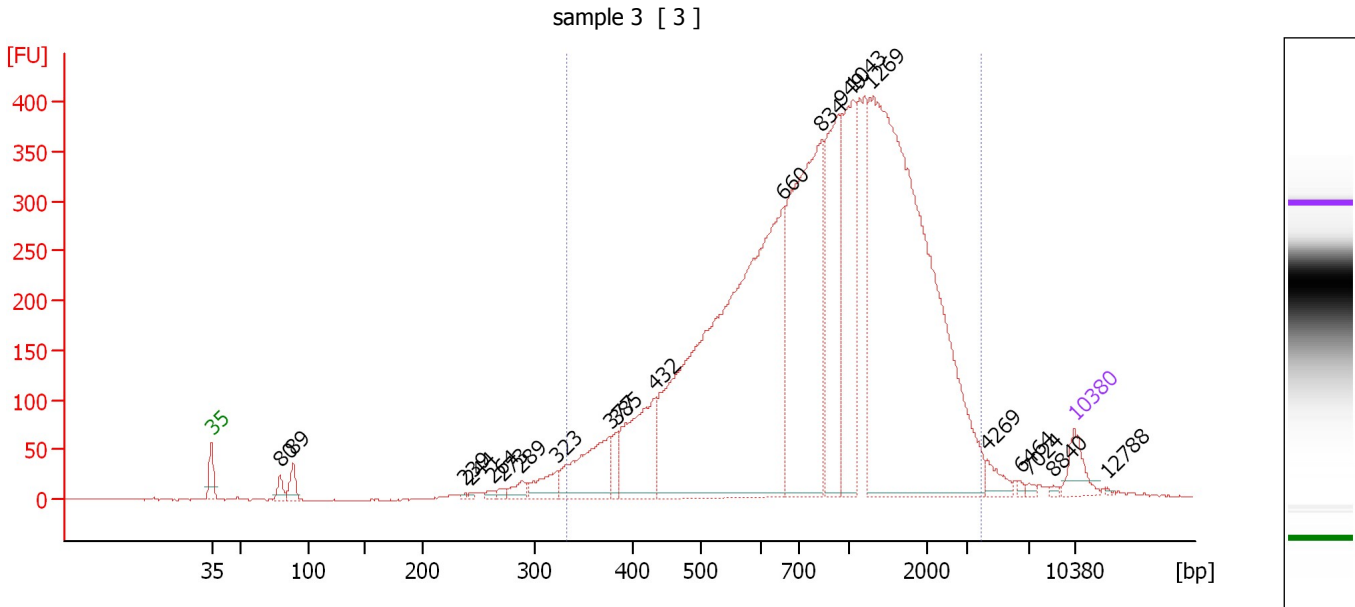
... Region table for sample 2 : sample 2

From [bp]	To [bp]	Average Size [bp]	Molarity [pmol/l]	Conc. [pg/μl]	Corr. Area	% of Total	Size distribution in CV [%]	Color
398	3,243	986	10,690.6	5,189.32	5,865.4	85	55.1	■

Assay Class: High Sensitivity DNA Assay
 Data Path: C:\...ents and Settings\Bioanalyzer\2013-10-23\2013-10-23_002.xad

Created: 10/23/2013 10:20:10 AM
 Modified: 10/23/2013 11:01:50 AM

Electropherogram Summary Continued ...



Overall Results for sample 3 : sample 3

Number of peaks found: 21 Corr. Area 1: 8,153.5
 Noise: 0.8

Peak table for sample 3 : sample 3

Peak	Size [bp]	Conc. [pg/μl]	Molarity [pmol/l]	Observations
1	35	125.00	5,411.3	Lower Marker
2	80	48.81	924.5	
3	89	78.72	1,334.0	
4	239	7.37	46.8	
5	244	7.94	49.3	
6	264	16.61	95.4	
7	273	18.07	100.4	
8	289	50.29	263.7	
9	323	104.69	490.8	
10	377	334.03	1,341.6	
11	385	62.57	246.3	
12	432	408.61	1,432.5	
13	660	2,608.32	5,989.8	
14	834	1,266.05	2,300.6	
15	949	609.61	972.8	
16	1,043	524.48	762.0	
17	1,269	2,427.99	2,899.0	
18	4,269	47.96	17.0	
19	6,464	7.42	1.7	
20	7,024	9.56	2.1	
21	8,840	6.53	1.1	
22	10,380	75.00	10.9	Upper Marker
23	12,788	0.00	0.0	

Assay Class: High Sensitivity DNA Assay
Data Path: C:\...ents and Settings\Bioanalyzer\2013-10-23\2013-10-23_002.xad

Created: 10/23/2013 10:20:10 AM
Modified: 10/23/2013 11:01:50 AM

Electropherogram Summary Continued ...

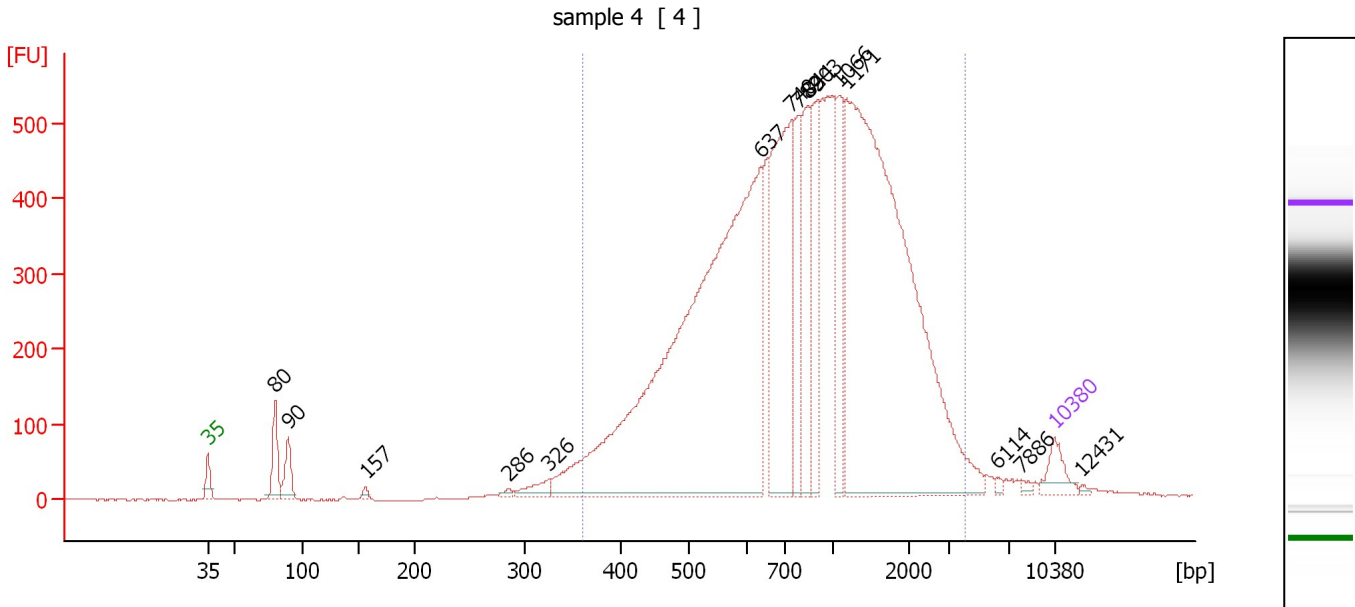
... Region table for sample 3 : sample 3

From [bp]	To [bp]	Average Size [bp]	Molarity [pmol/l]	Conc. [pg/μl]	Corr. Area	% of Total	Size distribution in CV [%]	Color
333	3,864	1,073	17,826.1	8,720.29	8,153.5	95	58.7	■

Assay Class: High Sensitivity DNA Assay
 Data Path: C:\...ents and Settings\Bioanalyzer\2013-10-23\2013-10-23_002.xad

Created: 10/23/2013 10:20:10 AM
 Modified: 10/23/2013 11:01:50 AM

Electropherogram Summary Continued ...



Overall Results for sample 4 : sample 4

Number of peaks found: 15 Corr. Area 1: 11,182.7
 Noise: 0.7

Peak table for sample 4 : sample 4

Peak	Size [bp]	Conc. [pg/μl]	Molarity [pmol/l]	Observations
1	35	125.00	5,411.3	Lower Marker
2	80	178.12	3,384.0	
3	90	135.40	2,286.0	
4	157	16.22	156.8	
5	286	16.36	86.6	
6	326	72.37	336.5	
7	637	3,385.91	8,049.8	
8	740	985.89	2,019.7	
9	782	301.78	584.6	
10	844	360.28	646.5	
11	903	333.31	559.1	
12	1,066	295.71	420.4	
13	1,171	2,666.38	3,451.4	
14	6,114	10.19	2.5	
15	7,886	11.24	2.2	
16	10,380	75.00	10.9	Upper Marker
17	12,431	0.00	0.0	

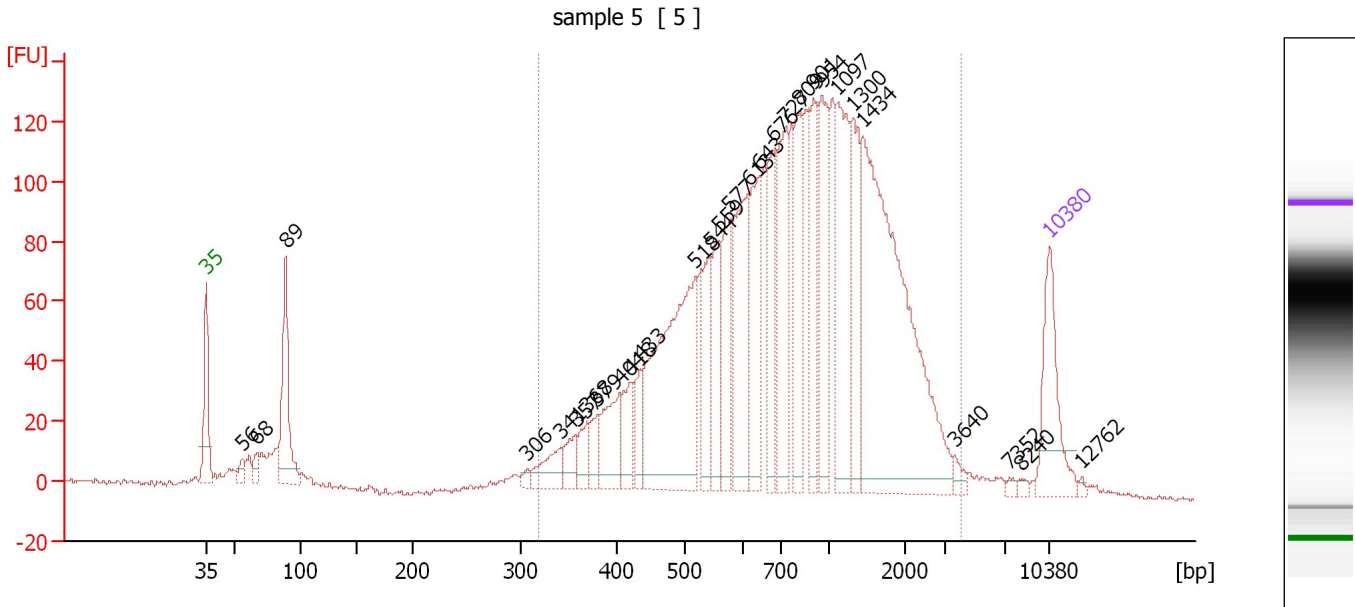
Region table for sample 4 : sample 4

From [bp]	To [bp]	Average Size [bp]	Molarity [pmol/l]	Conc. [pg/μl]	Corr. Area	% of Total	Size distribution in CV [%]	Color
361	4,086	1,036	18,984.1	9,276.25	11,182.7	94	59.0	Blue

Assay Class: High Sensitivity DNA Assay
 Data Path: C:\...ents and Settings\Bioanalyzer\2013-10-23\2013-10-23_002.xad

Created: 10/23/2013 10:20:10 AM
 Modified: 10/23/2013 11:01:50 AM

Electropherogram Summary Continued ...



Overall Results for sample 5 : sample 5

Number of peaks found: 29 Corr. Area 1: 2,818.1
 Noise: 0.9

Peak table for sample 5 : sample 5

Peak	Size [bp]	Conc. [pg/μl]	Molarity [pmol/l]	Observations
1	35	125.00	5,411.3	Lower Marker
2	56	12.54	337.6	
3	68	17.33	388.9	
4	89	149.76	2,544.7	
5	306	7.89	39.0	
6	341	40.92	181.8	
7	357	26.56	112.7	
8	368	31.37	129.1	
9	379	28.57	114.3	
10	404	68.13	255.8	
11	418	46.47	168.3	
12	433	38.24	133.7	
13	518	312.01	913.2	
14	544	75.64	210.8	
15	559	70.84	192.1	
16	577	78.33	205.6	
17	613	141.31	349.1	
18	643	108.89	256.7	
19	676	81.15	181.8	
20	727	129.63	270.2	
21	809	96.65	181.0	
22	901	78.12	131.4	
23	954	103.45	164.4	
24	1,097	142.18	196.3	
25	1,300	93.49	108.9	
26	1,434	420.26	444.2	

Assay Class: High Sensitivity DNA Assay
 Data Path: C:\...ents and Settings\Bioanalyzer\2013-10-23\2013-10-23_002.xad

Created: 10/23/2013 10:20:10 AM
 Modified: 10/23/2013 11:01:50 AM

Electropherogram Summary Continued ...

... Peak table for sample 5 : sample 5

Peak	Size [bp]	Conc. [pg/ μ l]	Molarity [pmol/l]	Observations
27	3,640	8.70	3.6	
28	7,352	3.53	0.7	
29	8,240	3.92	0.7	
30	10,380	75.00	10.9	Upper Marker
31	12,762	0.00	0.0	

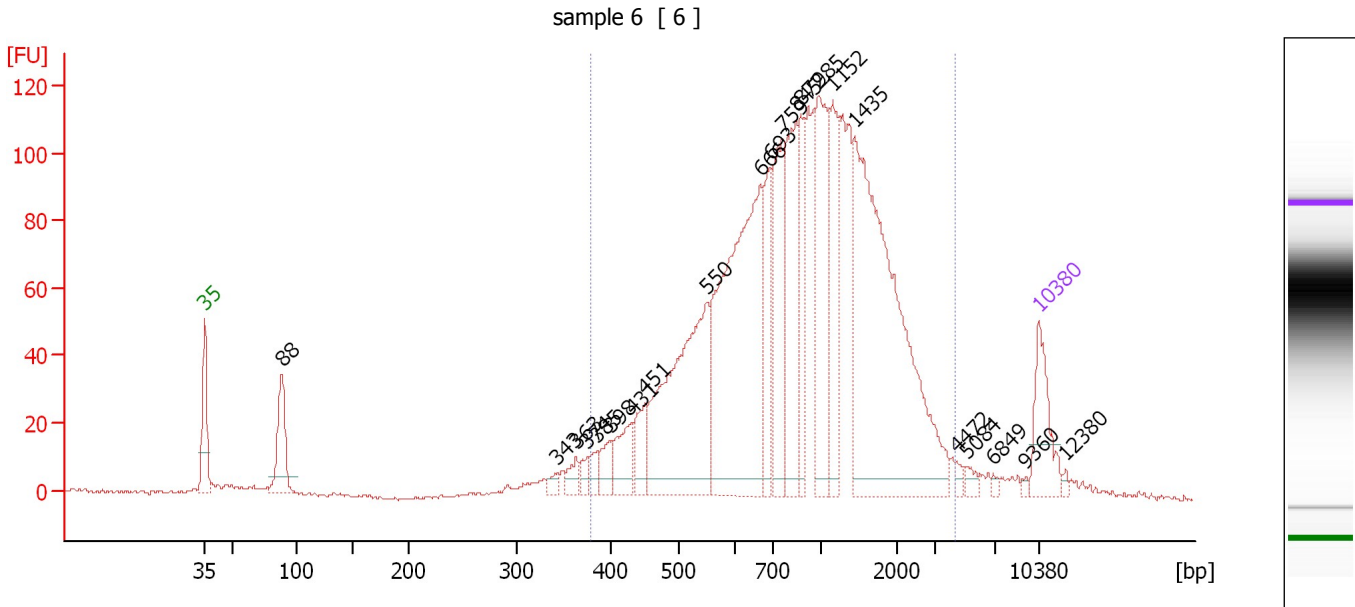
Region table for sample 5 : sample 5

From [bp]	To [bp]	Average Size [bp]	Molarity [pmol/l]	Conc. [pg/ μ l]	Corr. Area	% of Total	Size distribution in CV [%]	Color
318	4,104	981	5,583.1	2,554.07	2,818.1	90	59.6	

Assay Class: High Sensitivity DNA Assay
 Data Path: C:\...ents and Settings\Bioanalyzer\2013-10-23\2013-10-23_002.xad

Created: 10/23/2013 10:20:10 AM
 Modified: 10/23/2013 11:01:50 AM

Electropherogram Summary Continued ...



Overall Results for sample 6 : sample 6

Number of peaks found: 22 Corr. Area 1: 2,147.8
 Noise: 0.5

Peak table for sample 6 : sample 6

Peak	Size [bp]	Conc. [pg/μl]	Molarity [pmol/l]	Observations
1	35	125.00	5,411.3	Lower Marker
2	88	136.58	2,346.2	
3	343	13.40	59.2	
4	363	24.71	103.1	
5	374	19.95	80.8	
6	385	21.63	85.2	
7	398	36.45	138.7	
8	431	68.67	241.5	
9	451	58.96	198.3	
10	550	407.02	1,120.3	
11	666	585.72	1,333.2	
12	693	112.52	246.1	
13	759	194.29	387.9	
14	845	187.63	336.3	
15	872	103.33	179.6	
16	985	216.76	333.5	
17	1,152	139.42	183.4	
18	1,435	609.94	643.9	
19	4,472	8.10	2.7	
20	5,084	11.02	3.3	
21	6,849	4.88	1.1	
22	9,360	3.74	0.6	
23	10,380	75.00	10.9	Upper Marker
24	12,380	0.00	0.0	

Assay Class: High Sensitivity DNA Assay
Data Path: C:\...ents and Settings\Bioanalyzer\2013-10-23\2013-10-23_002.xad

Created: 10/23/2013 10:20:10 AM
Modified: 10/23/2013 11:01:50 AM

Electropherogram Summary Continued ...

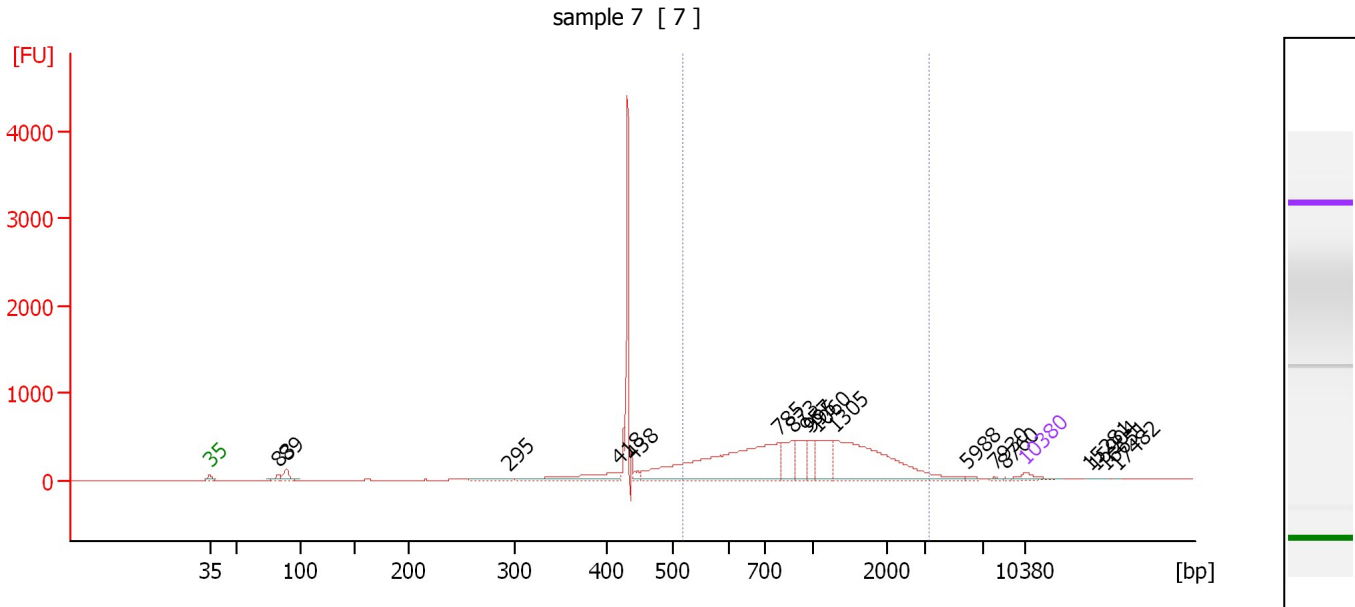
... Region table for sample 6 : sample 6

From [bp]	To [bp]	Average Size [bp]	Molarity [pmol/l]	Conc. [pg/μl]	Corr. Area	% of Total	Size distribution in CV [%]	Color
379	4,336	1,072	5,961.4	3,067.91	2,147.8	92	57.6	■

Assay Class: High Sensitivity DNA Assay
 Data Path: C:\...ents and Settings\Bioanalyzer\2013-10-23\2013-10-23_002.xad

Created: 10/23/2013 10:20:10 AM
 Modified: 10/23/2013 11:01:50 AM

Electropherogram Summary Continued ...



Overall Results for sample 7 : sample 7

Number of peaks found: 18 Corr. Area 1: 7,556.0
 Noise: 0.6

Peak table for sample 7 : sample 7

Peak	Size [bp]	Conc. [pg/μl]	Molarity [pmol/l]	Observations
1	35	125.00	5,411.3	Lower Marker
2	83	81.18	1,481.2	
3	89	172.25	2,938.3	
4	295	39.93	204.9	
5	418	392.57	1,423.9	
6	438	69.41	240.2	
7	785	2,499.83	4,824.8	
8	873	360.00	624.9	
9	957	339.48	537.3	
10	995	220.73	336.3	
11	1,060	478.36	683.5	
12	1,305	1,673.28	1,942.0	
13	5,988	15.67	4.0	
14	7,930	14.71	2.8	
15	8,760	8.82	1.5	
16	10,380	75.00	10.9	Upper Marker
17	15,281	0.00	0.0	
18	15,904	0.00	0.0	
19	16,651	0.00	0.0	
20	17,482	0.00	0.0	

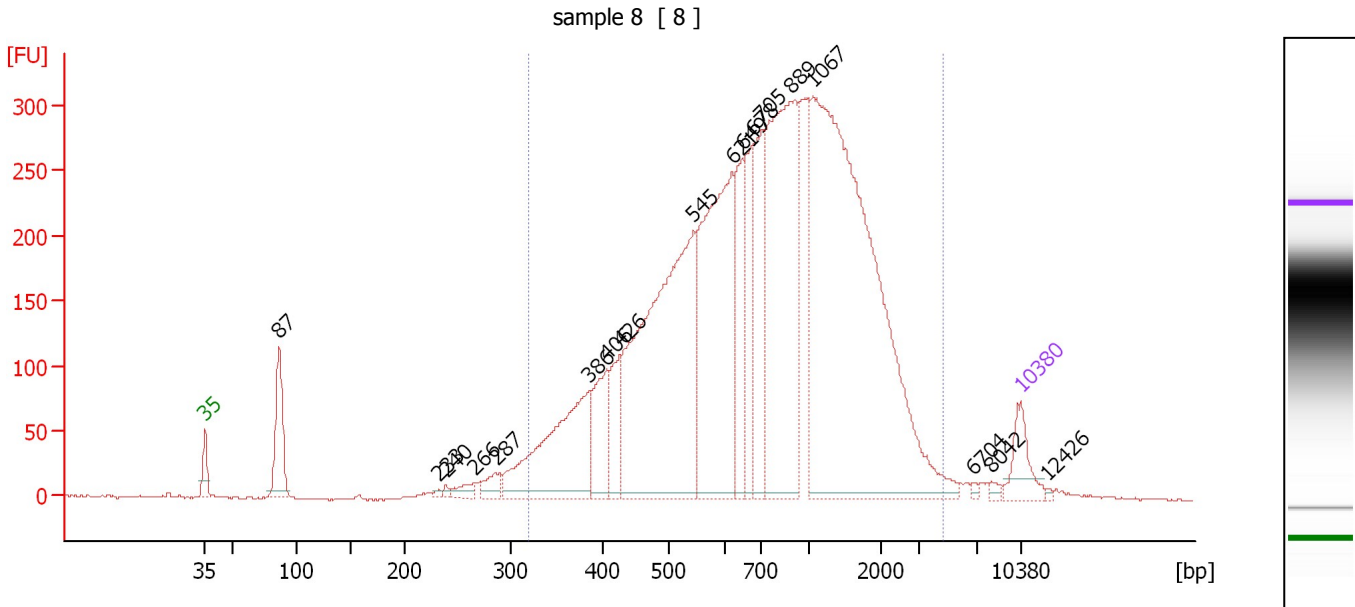
Region table for sample 7 : sample 7

From [bp]	To [bp]	Average Size [bp]	Molarity [pmol/l]	Conc. [pg/μl]	Corr. Area	% of Total	Size distribution in CV [%]	Color
518	3,253	1,141	8,719.0	5,098.15	7,556.0	71	50.1	Blue

Assay Class: High Sensitivity DNA Assay
 Data Path: C:\...ents and Settings\Bioanalyzer\2013-10-23\2013-10-23_002.xad

Created: 10/23/2013 10:20:10 AM
 Modified: 10/23/2013 11:01:50 AM

Electropherogram Summary Continued ...



Overall Results for sample 8 : sample 8

Number of peaks found: 18 Corr. Area 1: 6,942.8
 Noise: 0.7

Peak table for sample 8 : sample 8

Peak	Size [bp]	Conc. [pg/μl]	Molarity [pmol/l]	Observations
1	35	125.00	5,411.3	Lower Marker
2	87	246.33	4,287.4	
3	233	7.50	48.7	
4	240	9.74	61.5	
5	266	33.60	191.3	
6	287	49.84	263.4	
7	386	502.10	1,972.8	
8	406	182.16	680.5	
9	426	137.32	488.6	
10	545	1,165.02	3,240.0	
11	621	797.84	1,946.0	
12	649	225.02	525.6	
13	678	234.74	524.8	
14	705	271.77	583.7	
15	889	794.55	1,354.3	
16	1,067	1,744.30	2,476.2	
17	6,704	5.74	1.3	
18	8,042	8.83	1.7	
19	10,380	75.00	10.9	Upper Marker
20	12,426	0.00	0.0	

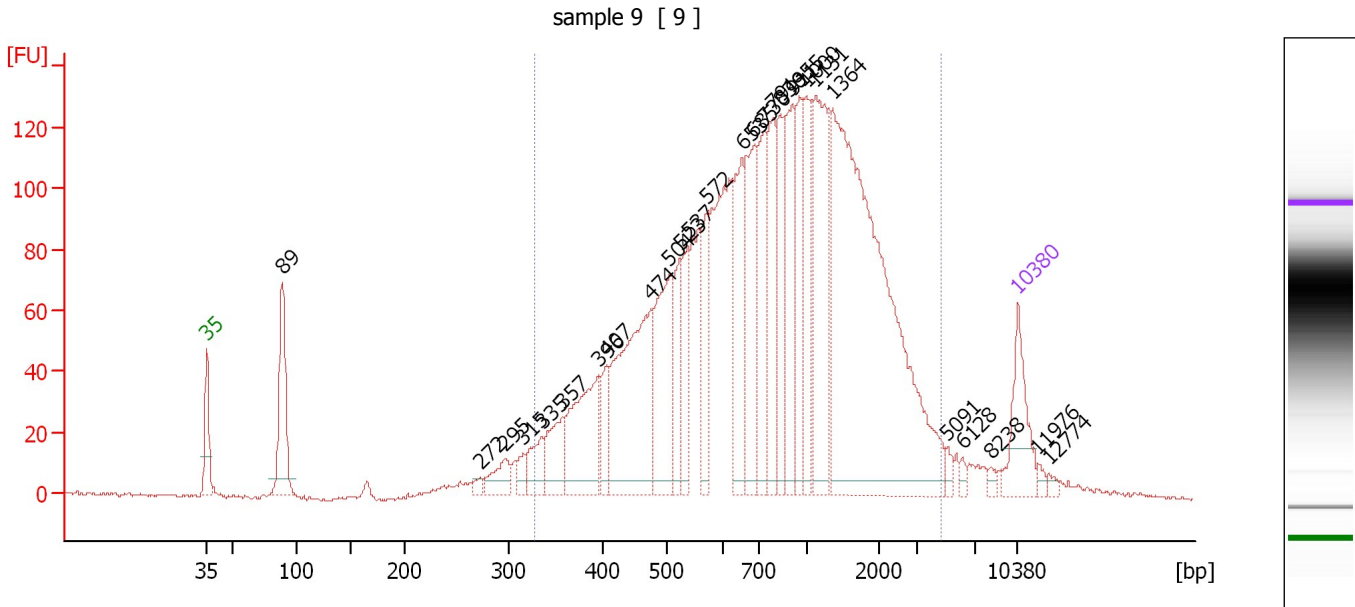
Region table for sample 8 : sample 8

From [bp]	To [bp]	Average Size [bp]	Molarity [pmol/l]	Conc. [pg/μl]	Corr. Area	% of Total	Size distribution in CV [%]	Color
320	4,591	961	14,145.7	6,256.51	6,942.8	94	62.1	Blue

Assay Class: High Sensitivity DNA Assay
 Data Path: C:\...ents and Settings\Bioanalyzer\2013-10-23\2013-10-23_002.xad

Created: 10/23/2013 10:20:10 AM
 Modified: 10/23/2013 11:01:50 AM

Electropherogram Summary Continued ...



Overall Results for sample 9 : sample 9

Number of peaks found: 28 Corr. Area 1: 3,015.0
 Noise: 0.6

Peak table for sample 9 : sample 9

Peak	Size [bp]	Conc. [pg/μl]	Molarity [pmol/l]	Observations
1	35	125.00	5,411.3	Lower Marker
2	89	192.56	3,291.1	
3	272	9.29	51.8	
4	295	46.36	237.7	
5	315	22.06	106.1	
6	335	52.77	238.6	
7	357	82.47	350.0	
8	396	174.12	666.0	
9	407	51.92	193.4	
10	474	336.03	1,075.0	
11	504	188.53	567.2	
12	523	90.28	261.6	
13	537	82.22	231.8	
14	572	89.25	236.3	
15	653	158.52	367.8	
16	685	175.81	388.9	
17	730	133.22	276.6	
18	791	148.86	285.0	
19	836	108.58	196.8	
20	911	159.10	264.6	
21	955	98.35	156.0	
22	1,000	126.19	191.2	
23	1,131	228.68	306.4	
24	1,364	791.15	878.8	
25	5,091	9.97	3.0	
26	6,128	6.76	1.7	


Assay Class: High Sensitivity DNA Assay
Data Path: C:\...ents and Settings\Bioanalyzer\2013-10-23\2013-10-23_002.xad

Created: 10/23/2013 10:20:10 AM
Modified: 10/23/2013 11:01:50 AM

Electropherogram Summary Continued ...**... Peak table for sample 9 : sample 9**

Peak	Size [bp]	Conc. [pg/μl]	Molarity [pmol/l]	Observations
27	8,238	6.78	1.2	
28	10,380	75.00	10.9	Upper Marker
29	11,976	0.00	0.0	
30	12,774	0.00	0.0	

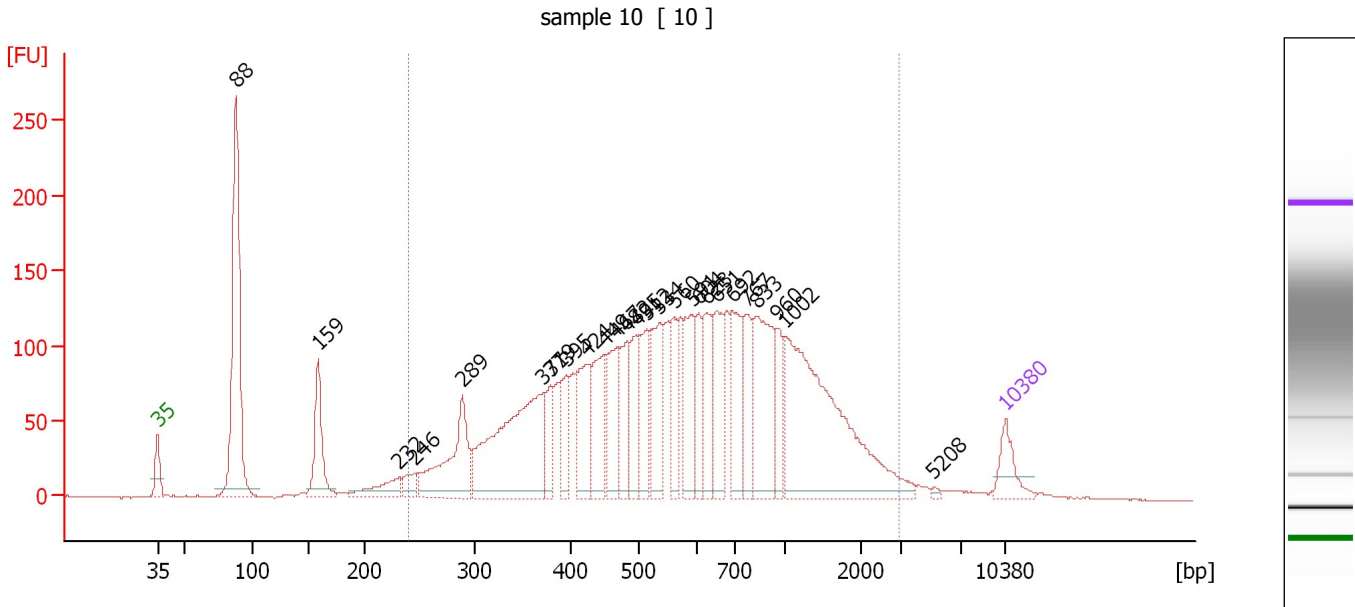
Region table for sample 9 : sample 9

From [bp]	To [bp]	Average Size [bp]	Molarity [pmol/l]	Conc. [pg/μl]	Corr. Area	% of Total	Size distribution in CV [%]	Color
327	4,636	1,038	8,193.5	3,731.76	3,015.0	91	67.0	

Assay Class: High Sensitivity DNA Assay
 Data Path: C:\...ents and Settings\Bioanalyzer\2013-10-23\2013-10-23_002.xad

Created: 10/23/2013 10:20:10 AM
 Modified: 10/23/2013 11:01:50 AM

Electropherogram Summary Continued ...



Overall Results for sample 10 : sample 10

Number of peaks found: 26 Corr. Area 1: 3,727.7
 Noise: 0.4

Peak table for sample 10 : sample 10

Peak	Size [bp]	Conc. [pg/μl]	Molarity [pmol/l]	Observations
1	35	125.00	5,411.3	Lower Marker
2	88	892.76	15,336.5	
3	159	253.94	2,420.1	
4	232	98.53	643.2	
5	246	56.86	350.4	
6	289	344.13	1,803.1	
7	371	672.69	2,746.4	
8	379	103.83	414.8	
9	395	125.72	482.4	
10	424	216.16	772.6	
11	449	225.53	761.8	
12	467	200.38	650.6	
13	482	168.40	529.1	
14	495	174.74	535.3	
15	512	156.44	462.9	
16	534	234.84	665.8	
17	560	137.23	371.4	
18	591	200.13	513.1	
19	604	123.06	308.7	
20	623	161.76	393.4	
21	651	192.91	449.0	
22	692	221.49	484.9	
23	767	146.52	289.3	
24	833	341.39	621.3	
25	960	105.30	166.2	
26	1,002	811.74	1,226.9	

Assay Class: High Sensitivity DNA Assay
Data Path: C:\...ents and Settings\Bioanalyzer\2013-10-23\2013-10-23_002.xad

Created: 10/23/2013 10:20:10 AM
Modified: 10/23/2013 11:01:50 AM

Electropherogram Summary Continued ...**... Peak table for sample 10 : sample 10**

Peak	Size [bp]	Conc. [pg/ μ l]	Molarity [pmol/l]	Observations
27	5,208	7.58	2.2	
28	10,380	75.00	10.9	Upper Marker

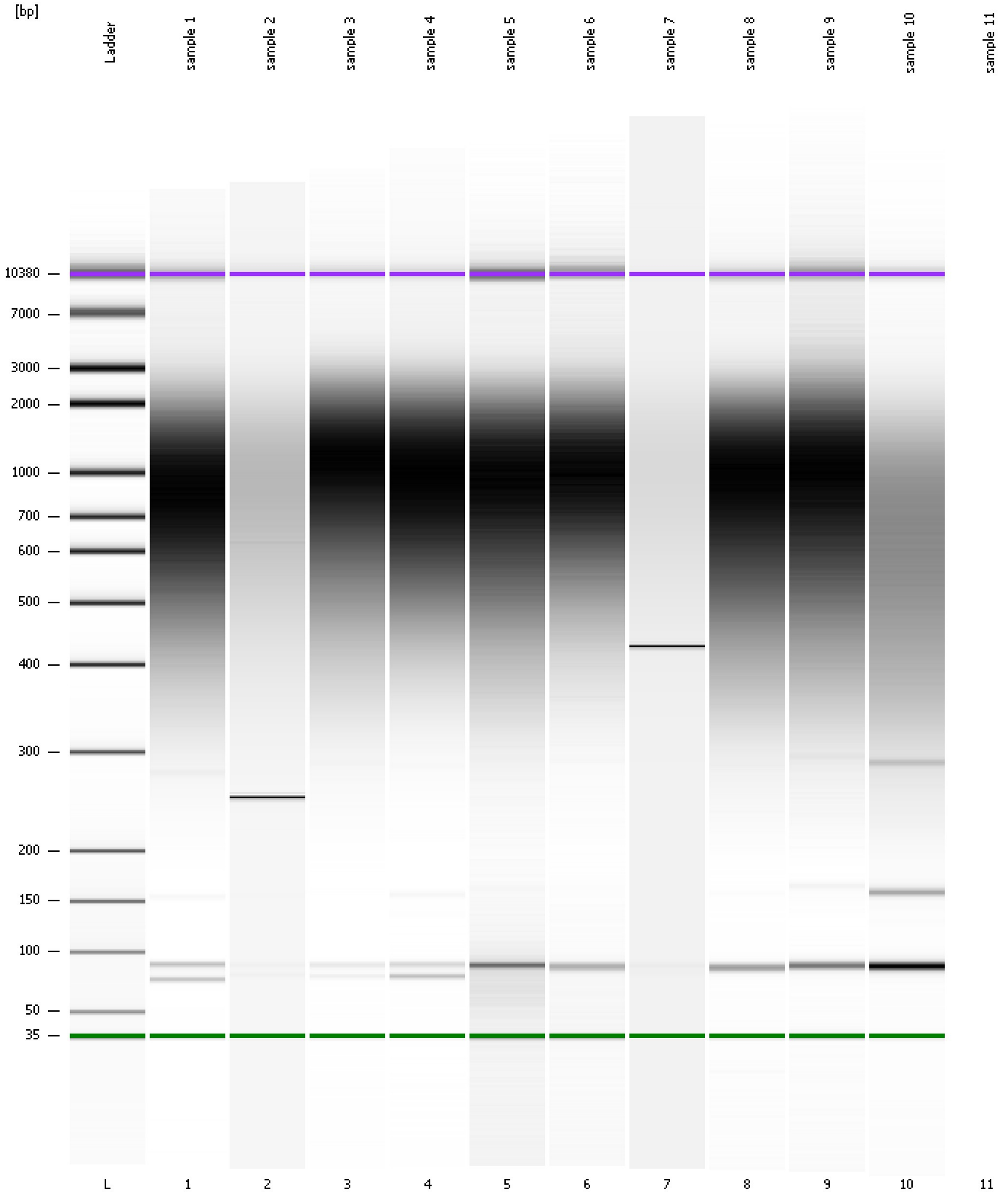
Region table for sample 10 : sample 10

From [bp]	To [bp]	Average Size [bp]	Molarity [pmol/l]	Conc. [pg/ μ l]	Corr. Area	% of Total	Size distribution in CV [%]	Color
241	2,956	727	16,800.2	5,688.57	3,727.7	85	62.9	

Assay Class: High Sensitivity DNA Assay
Data Path: C:\...ents and Settings\Bioanalyzer\2013-10-23\2013-10-23_002.xad

Created: 10/23/2013 10:20:10 AM
Modified: 10/23/2013 11:01:50 AM

Gel Image



Assay Class: High Sensitivity DNA Assay
Data Path: C:\...ents and Settings\Bioanalyzer\2013-10-23\2013-10-23_002.xad

Created: 10/23/2013 10:20:10 AM
Modified: 10/23/2013 11:01:50 AM

Invalid Samples

Sample 11 has not been run, no results available.