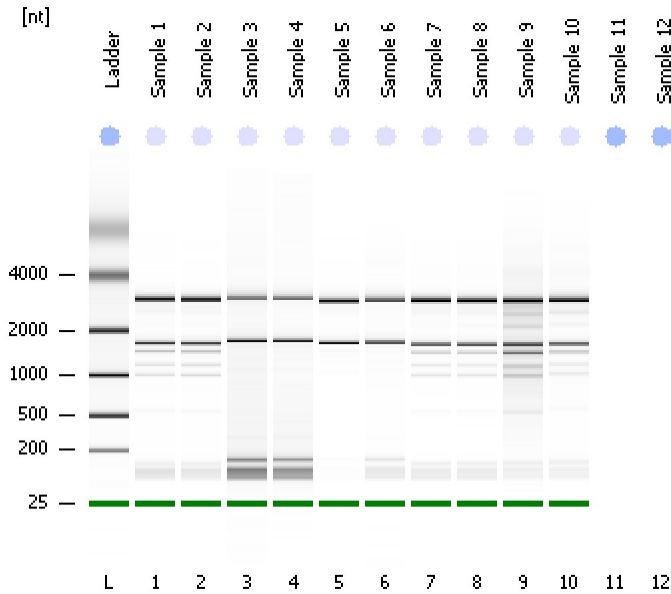


Assay Class: Eukaryote Total RNA Nano
Data Path: C:\...ents and Settings\Bioanalyzer\2013-10-23\2013-10-23_007.xad

Created: 10/23/2013 3:55:08 PM
Modified: 10/23/2013 4:24:25 PM

Electrophoresis File Run Summary



Instrument Information:

Instrument Name: DE13701086 Firmware: C.01.069
Serial#: DE13701086 Type: G2938B

Assay Information:

Assay Origin Path: C:\Program Files\Agilent\2100 bioanalyzer\2100 expert\assays\RNA\Eukaryote Total RNA Nano Series II.xsy

Assay Class: Eukaryote Total RNA Nano

Version: 2.6

Assay Comments: Total RNA Analysis ng sensitivity (Eukaryote)

© Copyright 2003 - 2009 Agilent Technologies, Inc.

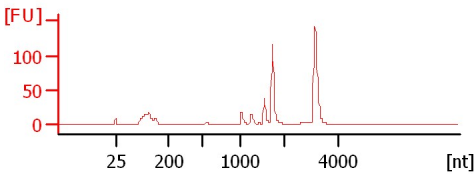
Chip Information:

Chip Lot #:

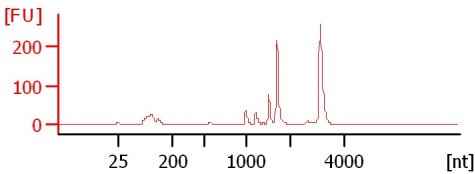
Reagent Kit Lot #:

Chip Comments:

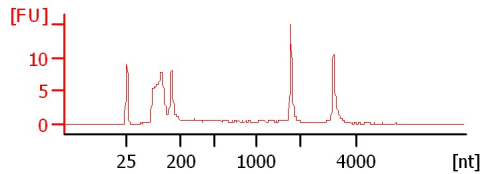
Sample 1
RIN: 8.40



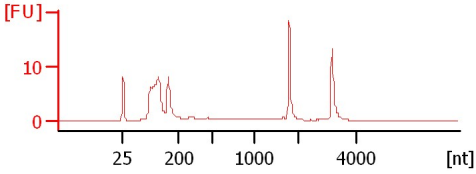
Sample 2
RIN: 8.30



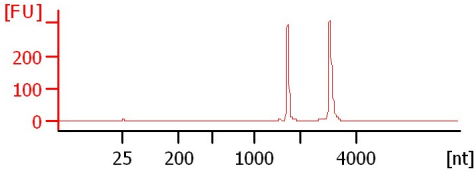
Sample 3
RIN: 7.50



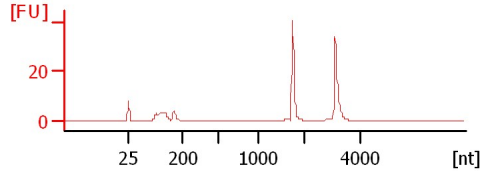
Sample 4
RIN: 7.90



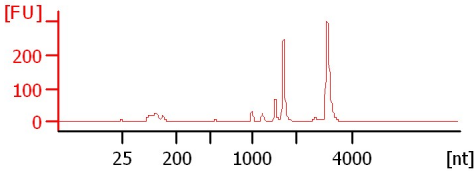
Sample 5
RIN: 9.90



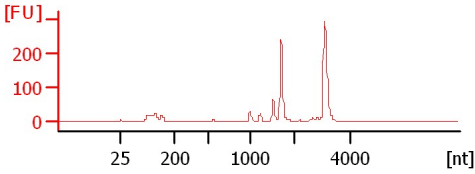
Sample 6
RIN: 9.50



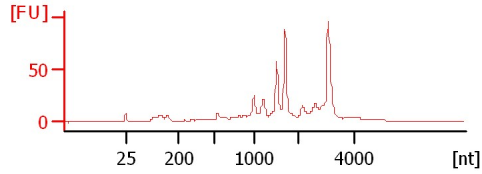
Sample 7
RIN: 8.90



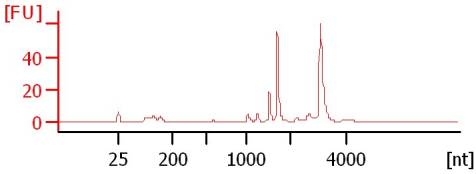
Sample 8
RIN: 8.80



Sample 9
RIN: 6.60



Sample 10
RIN: 8.50



Assay Class: Eukaryote Total RNA Nano
Data Path: C:\...ents and Settings\Bioanalyzer\2013-10-23\2013-10-23_007.xad

Created: 10/23/2013 3:55:08 PM
Modified: 10/23/2013 4:24:25 PM

Electrophoresis File Run Summary (Chip Summary)

Sample Name	Sample Comment	Status	Result Label	Result Color
Sample 1		✓	RIN: 8.40	
Sample 2		✓	RIN: 8.30	
Sample 3		✓	RIN: 7.50	
Sample 4		✓	RIN: 7.90	
Sample 5		✓	RIN: 9.90	
Sample 6		✓	RIN: 9.50	
Sample 7		✓	RIN: 8.90	
Sample 8		✓	RIN: 8.80	
Sample 9		✓	RIN: 6.60	
Sample 10		✓	RIN: 8.50	
Sample 11				
Sample 12				
Ladder		✓	All Other Samples	

Chip Lot #

Reagent Kit Lot #

Chip Comments :

Assay Class: Eukaryote Total RNA Nano
Data Path: C:\...ents and Settings\Bioanalyzer\2013-10-23\2013-10-23_007.xad

Created: 10/23/2013 3:55:08 PM
Modified: 10/23/2013 4:24:25 PM

Electrophoresis Assay Details

General Analysis Settings

Number of Available Sample and Ladder Wells (Max.) : 13
Minimum Visible Range [s] : 17
Maximum Visible Range [s] : 70
Start Analysis Time Range [s] : 19
End Analysis Time Range [s] : 69
Ladder Concentration [ng/ μ l] : 150
Lower Marker Concentration [ng/ μ l] : 0
Upper Marker Concentration [ng/ μ l] : 0
Used Lower Marker for Quantitation
Standard Curve Fit is Logarithmic
Show Data Aligned to Lower Marker

Integrator Settings

Integration Start Time [s] : 19
Integration End Time [s] : 69
Slope Threshold : 0.6
Height Threshold [FU] : 0.5
Area Threshold : 0.2
Width Threshold [s] : 0.5
Baseline Plateau [s] : 6

Filter Settings

Filter Width [s] : 0.5
Polynomial Order : 4

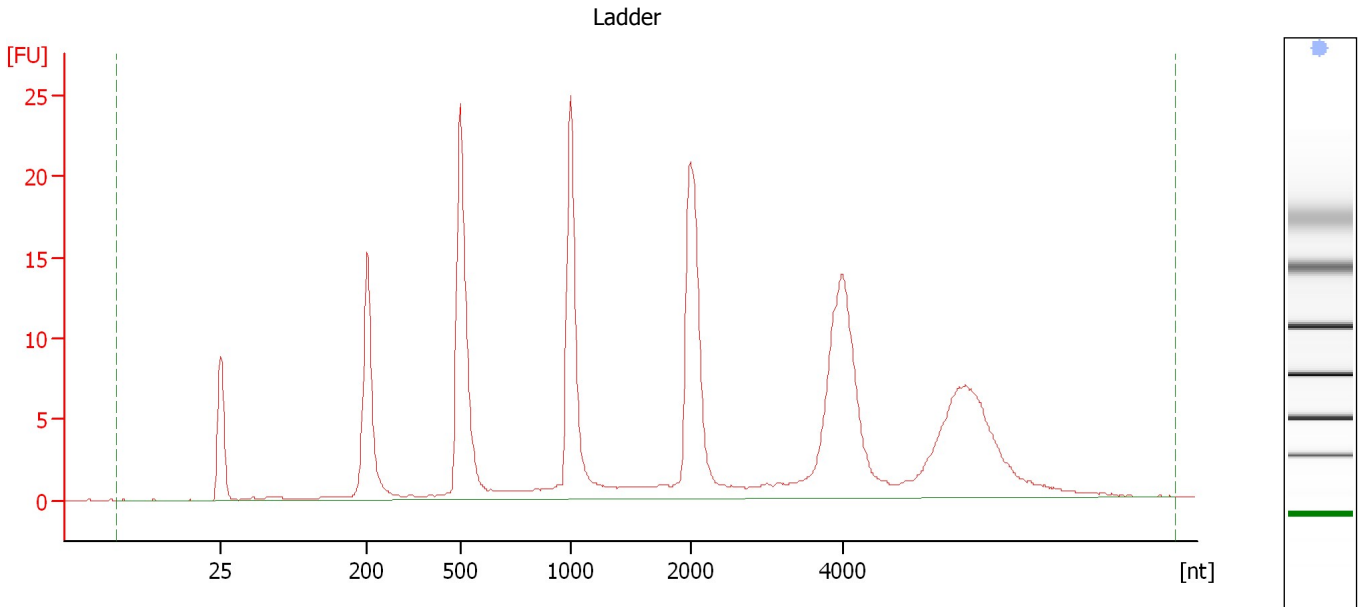
Ladder

Ladder Peak	Size
1	25
2	200
3	500
4	1000
5	2000
6	4000

Assay Class: Eukaryote Total RNA Nano
Data Path: C:\...ents and Settings\Bioanalyzer\2013-10-23\2013-10-23_007.xad

Created: 10/23/2013 3:55:08 PM
Modified: 10/23/2013 4:24:25 PM

Electropherogram Summary



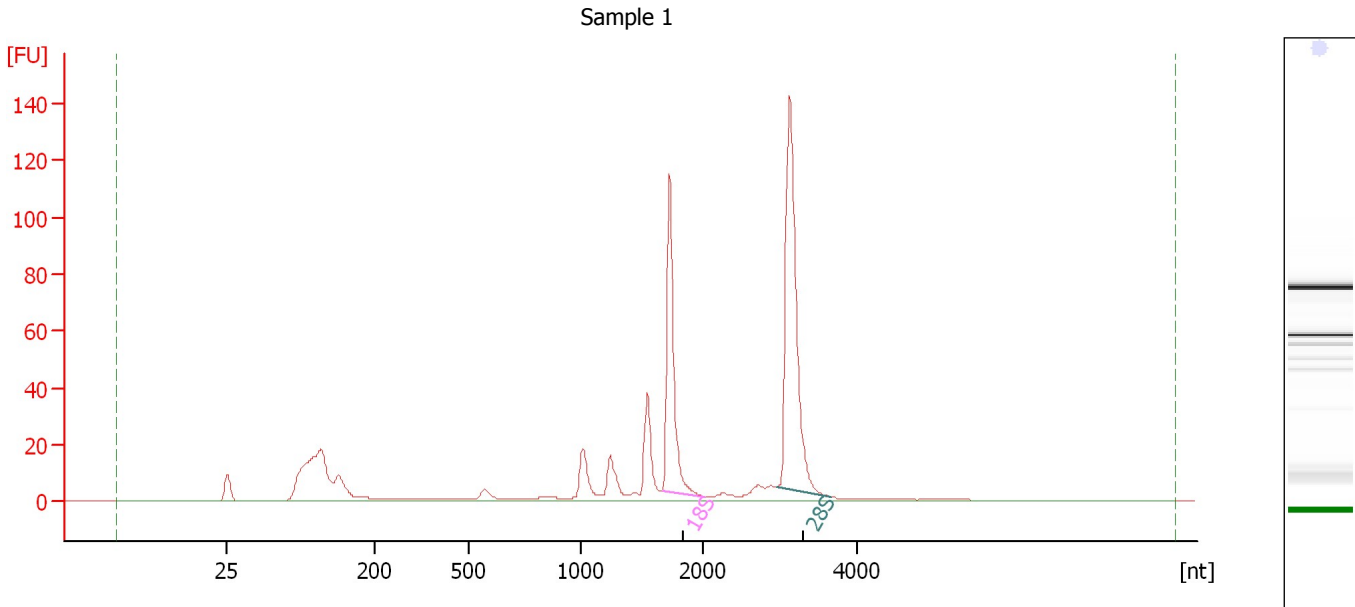
Overall Results for Ladder

RNA Area:	222.9	Result Flagging Color:	
RNA Concentration:	150 ng/ μ l	Result Flagging Label:	All Other Samples

Assay Class: Eukaryote Total RNA Nano
 Data Path: C:\...ents and Settings\Bioanalyzer\2013-10-23\2013-10-23_007.xad

Created: 10/23/2013 3:55:08 PM
 Modified: 10/23/2013 4:24:25 PM

Electropherogram Summary Continued ...



Overall Results for sample 1 : Sample 1

RNA Area:	508.4	RNA Integrity Number (RIN):	8.4 (B.02.08, Anomaly Threshold(s) manually adapted)
RNA Concentration:	342 ng/μl	Result Flagging Color:	
rRNA Ratio [28s / 18s]:	1.6	Result Flagging Label:	RIN: 8.40

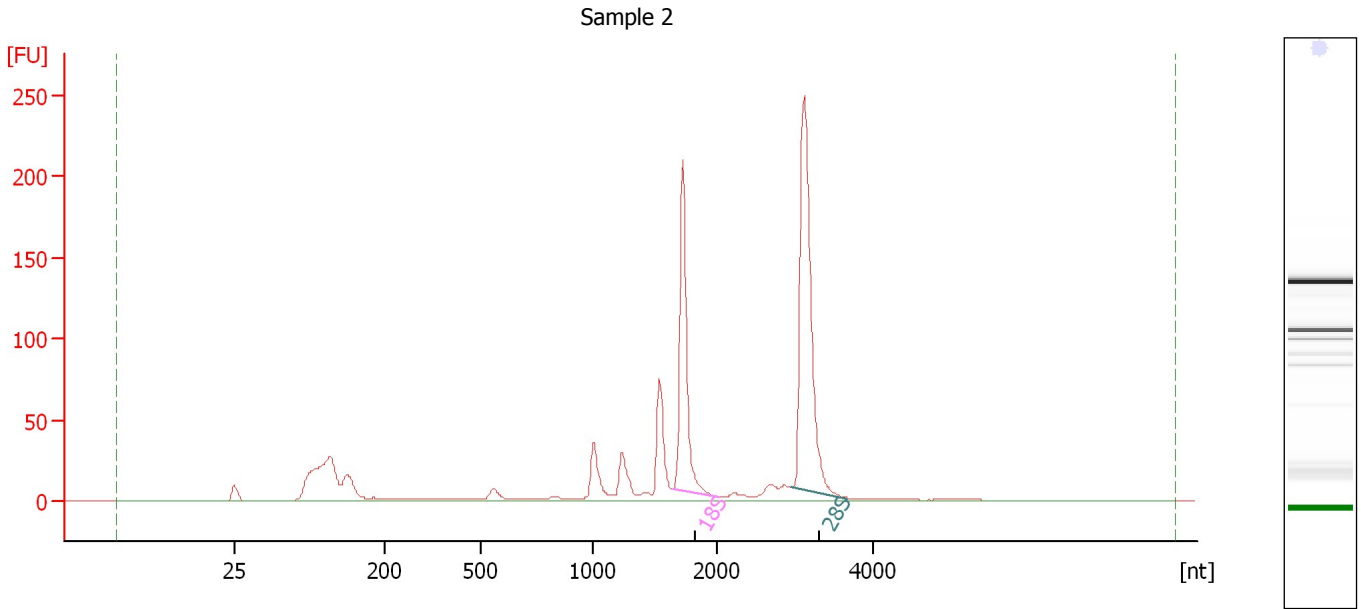
Fragment table for sample 1 : Sample 1

Name	Start Size [nt]	End Size [nt]	Area	% of total Area
18S	1,664	2,035	92.6	18.2
28S	2,954	3,677	151.5	29.8

Assay Class: Eukaryote Total RNA Nano
Data Path: C:\...ents and Settings\Bioanalyzer\2013-10-23\2013-10-23_007.xad

Created: 10/23/2013 3:55:08 PM
Modified: 10/23/2013 4:24:25 PM

Electropherogram Summary Continued ...



Overall Results for sample 2 : Sample 2

RNA Area:	887.3	RNA Integrity Number (RIN):	8.3 (B.02.08, Anomaly Threshold(s) manually adapted)
RNA Concentration:	597 ng/μl	Result Flagging Color:	
rRNA Ratio [28s / 18s]:	1.6	Result Flagging Label:	RIN: 8.30

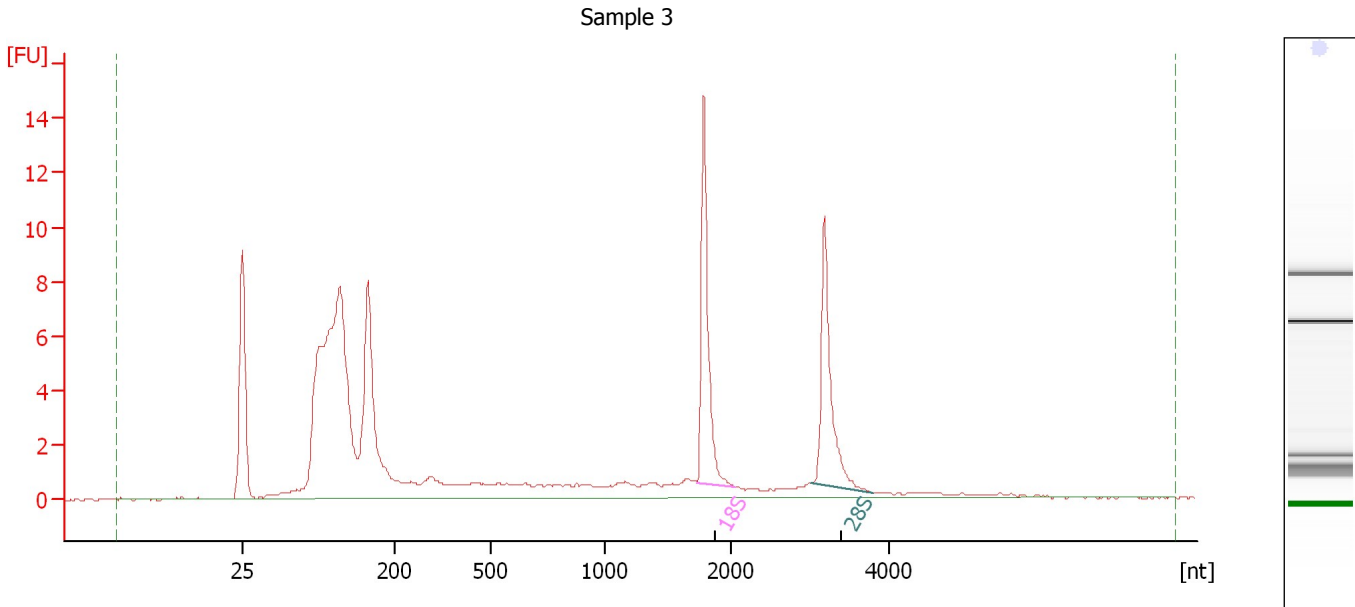
Fragment table for sample 2 : Sample 2

Name	Start Size [nt]	End Size [nt]	Area	% of total Area
18S	1,648	2,030	169.2	19.1
28S	2,936	3,677	269.0	30.3

Assay Class: Eukaryote Total RNA Nano
 Data Path: C:\...ents and Settings\Bioanalyzer\2013-10-23\2013-10-23_007.xad

Created: 10/23/2013 3:55:08 PM
 Modified: 10/23/2013 4:24:25 PM

Electropherogram Summary Continued ...



Overall Results for sample 3 : Sample 3

RNA Area:	102.3	RNA Integrity Number (RIN):	7.5 (B.02.08, Anomaly Threshold(s) manually adapted)
RNA Concentration:	69 ng/μl	Result Flagging Color:	
rRNA Ratio [28s / 18s]:	0.9	Result Flagging Label:	RIN: 7.50

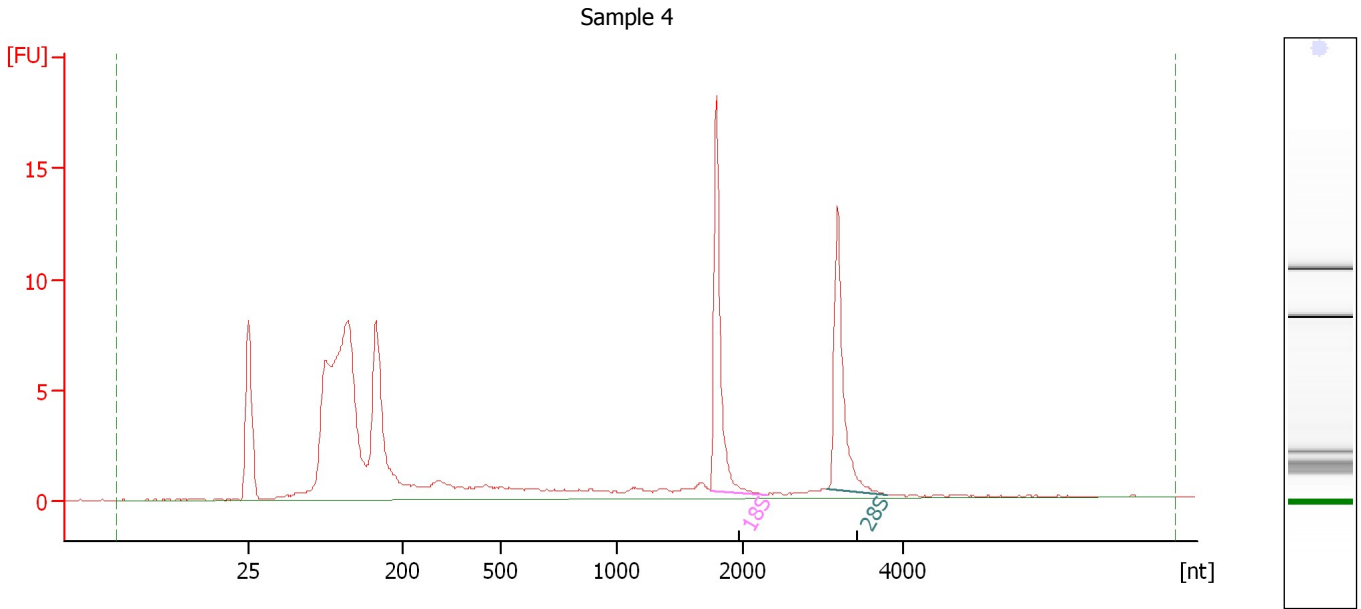
Fragment table for sample 3 : Sample 3

Name	Start Size [nt]	End Size [nt]	Area	% of total Area
18S	1,727	2,039	11.0	10.8
28S	3,013	3,798	9.5	9.3

Assay Class: Eukaryote Total RNA Nano
Data Path: C:\...ents and Settings\Bioanalyzer\2013-10-23\2013-10-23_007.xad

Created: 10/23/2013 3:55:08 PM
Modified: 10/23/2013 4:24:25 PM

Electropherogram Summary Continued ...



Overall Results for sample 4 : Sample 4

RNA Area:	108.3	RNA Integrity Number (RIN):	7.9 (B.02.08, Anomaly Threshold(s) manually adapted)
RNA Concentration:	73 ng/μl		
rRNA Ratio [28s / 18s]:	0.8	Result Flagging Color:	
		Result Flagging Label:	RIN: 7.90

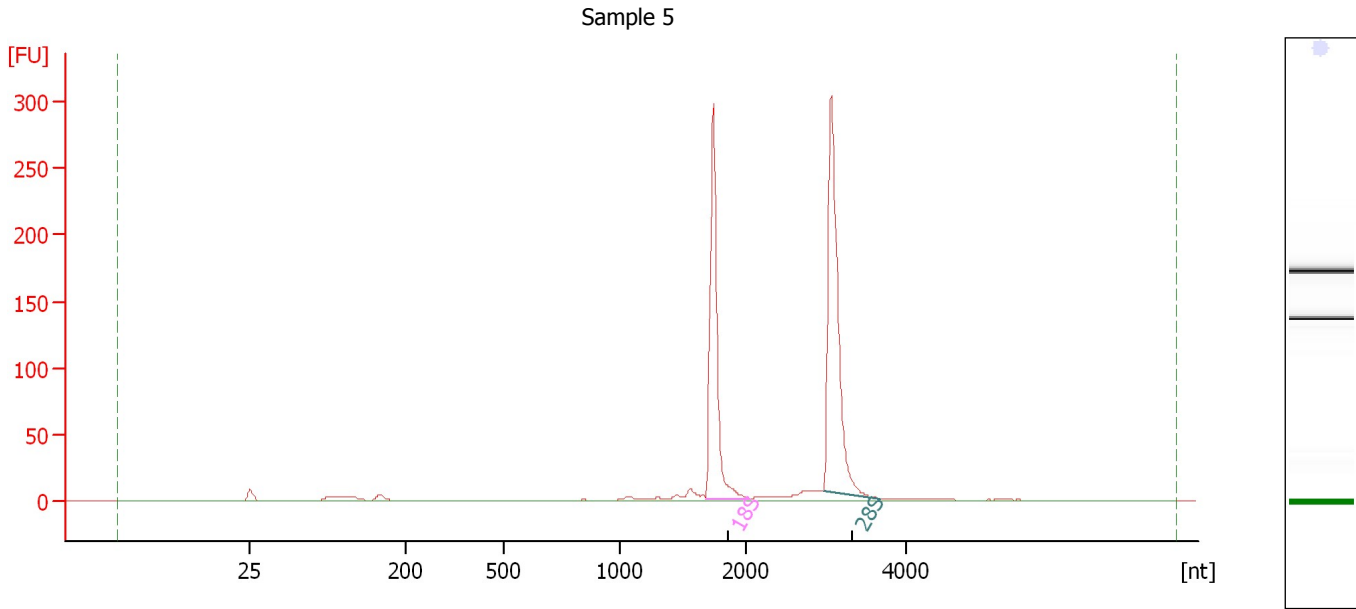
Fragment table for sample 4 : Sample 4

Name	Start Size [nt]	End Size [nt]	Area	% of total Area
18S	1,735	2,287	13.5	12.5
28S	3,036	3,798	11.2	10.4

Assay Class: Eukaryote Total RNA Nano
Data Path: C:\...ents and Settings\Bioanalyzer\2013-10-23\2013-10-23_007.xad

Created: 10/23/2013 3:55:08 PM
Modified: 10/23/2013 4:24:25 PM

Electropherogram Summary Continued ...



Overall Results for sample 5 : Sample 5

RNA Area: 658.9 RNA Integrity Number (RIN): 9.9 (B.02.08)
RNA Concentration: 443 ng/μl Result Flagging Color:
rRNA Ratio [28s / 18s]: 1.3 Result Flagging Label: RIN: 9.90

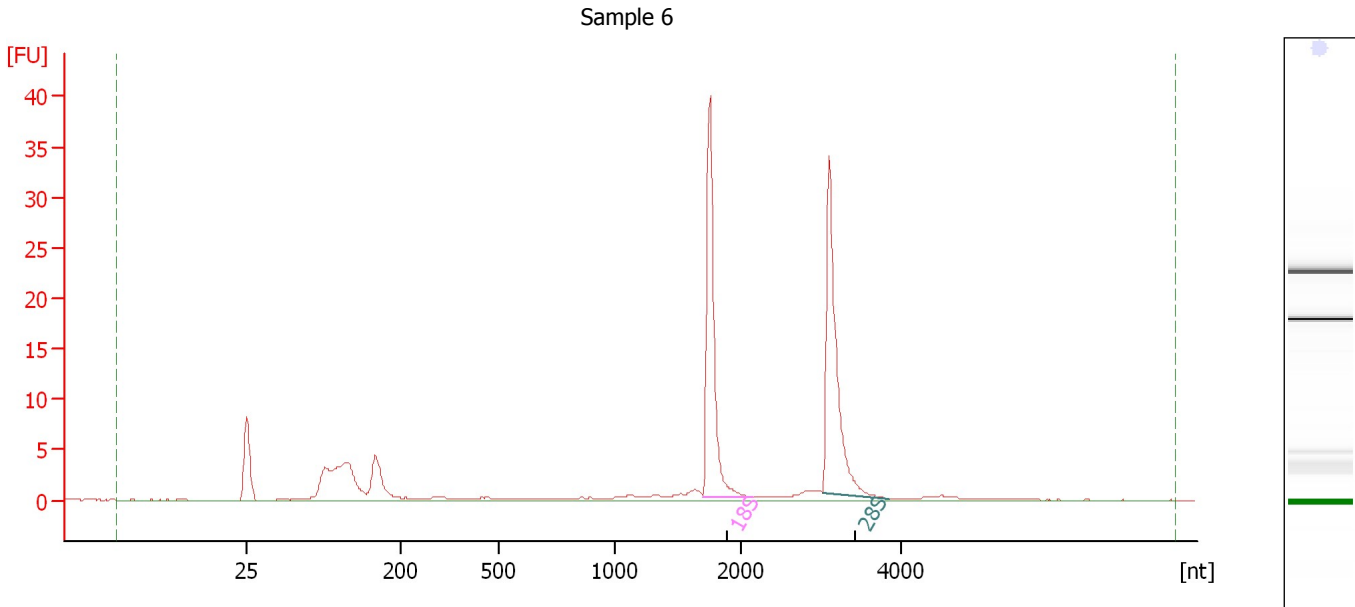
Fragment table for sample 5 : Sample 5

Name	Start Size [nt]	End Size [nt]	Area	% of total Area
18S	1,678	2,048	226.8	34.4
28S	2,955	3,662	296.9	45.1

Assay Class: Eukaryote Total RNA Nano
 Data Path: C:\...ents and Settings\Bioanalyzer\2013-10-23\2013-10-23_007.xad

Created: 10/23/2013 3:55:08 PM
 Modified: 10/23/2013 4:24:25 PM

Electropherogram Summary Continued ...



Overall Results for sample 6 : Sample 6

RNA Area:	113.6	RNA Integrity Number (RIN):	9.5 (B.02.08)
RNA Concentration:	76 ng/μl	Result Flagging Color:	
rRNA Ratio [28s / 18s]:	1.1	Result Flagging Label:	RIN: 9.50

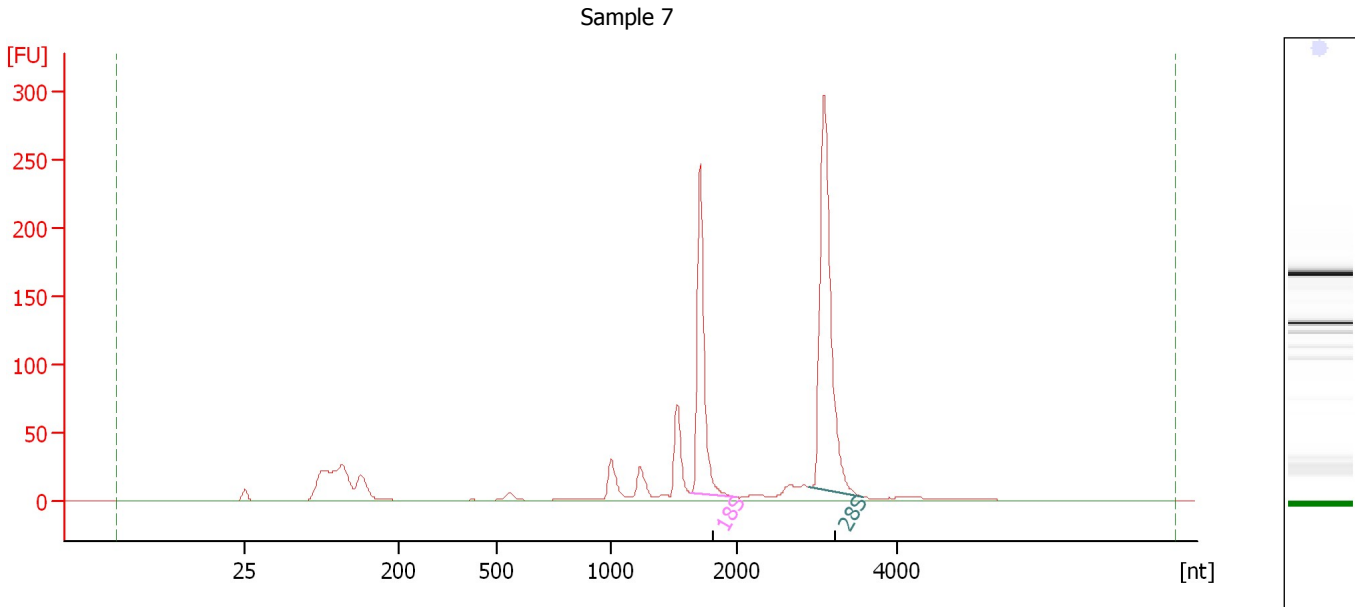
Fragment table for sample 6 : Sample 6

Name	Start Size [nt]	End Size [nt]	Area	% of total Area
18S	1,700	2,139	31.0	27.3
28S	3,010	3,840	32.8	28.9

Assay Class: Eukaryote Total RNA Nano
 Data Path: C:\...ents and Settings\Bioanalyzer\2013-10-23\2013-10-23_007.xad

Created: 10/23/2013 3:55:08 PM
 Modified: 10/23/2013 4:24:25 PM

Electropherogram Summary Continued ...



Overall Results for sample 7 : Sample 7

RNA Area:	972.7	RNA Integrity Number (RIN):	8.9 (B.02.08, Anomaly Threshold(s) manually adapted)
RNA Concentration:	654 ng/μl	Result Flagging Color:	
rRNA Ratio [28s / 18s]:	1.6	Result Flagging Label:	RIN: 8.90

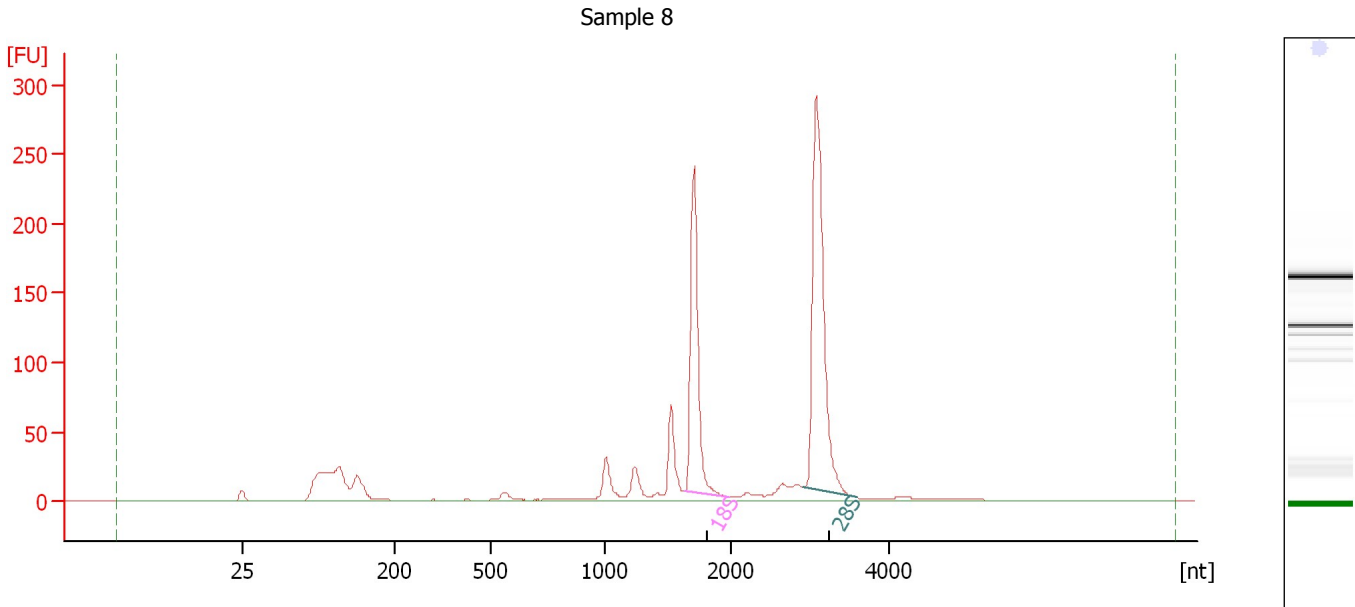
Fragment table for sample 7 : Sample 7

Name	Start Size [nt]	End Size [nt]	Area	% of total Area
18S	1,638	2,002	198.9	20.4
28S	2,904	3,589	326.0	33.5

Assay Class: Eukaryote Total RNA Nano
Data Path: C:\...ents and Settings\Bioanalyzer\2013-10-23\2013-10-23_007.xad

Created: 10/23/2013 3:55:08 PM
Modified: 10/23/2013 4:24:25 PM

Electropherogram Summary Continued ...



Overall Results for sample 8 : Sample 8

RNA Area:	951.2	RNA Integrity Number (RIN):	8.8 (B.02.08, Anomaly Threshold(s) manually adapted)
RNA Concentration:	640 ng/μl	Result Flagging Color:	
rRNA Ratio [28s / 18s]:	1.6	Result Flagging Label:	RIN: 8.80

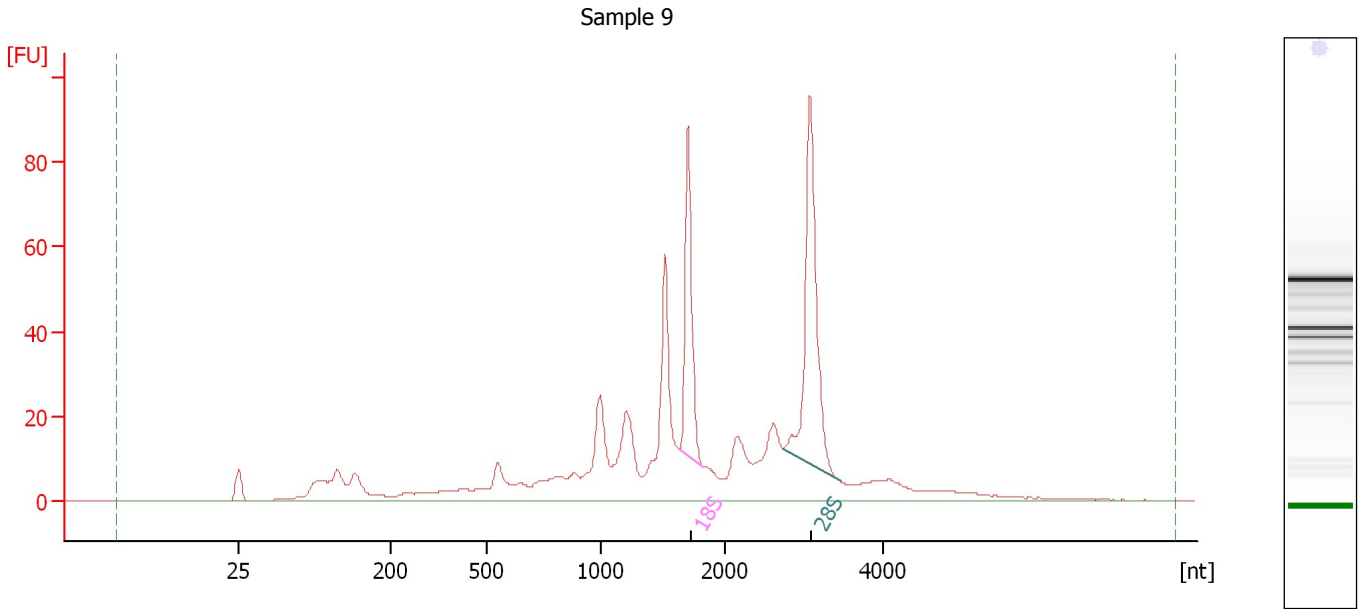
Fragment table for sample 8 : Sample 8

Name	Start Size [nt]	End Size [nt]	Area	% of total Area
18S	1,633	1,982	193.3	20.3
28S	2,905	3,581	315.9	33.2

Assay Class: Eukaryote Total RNA Nano
 Data Path: C:\...ents and Settings\Bioanalyzer\2013-10-23\2013-10-23_007.xad

Created: 10/23/2013 3:55:08 PM
 Modified: 10/23/2013 4:24:25 PM

Electropherogram Summary Continued ...



Overall Results for sample 9 : Sample 9

RNA Area:	643.3	RNA Integrity Number (RIN):	6.6 (B.02.08, Anomaly Threshold(s) manually adapted)
RNA Concentration:	433 ng/μl	Result Flagging Color:	
rRNA Ratio [28s / 18s]:	1.7	Result Flagging Label:	RIN: 6.60

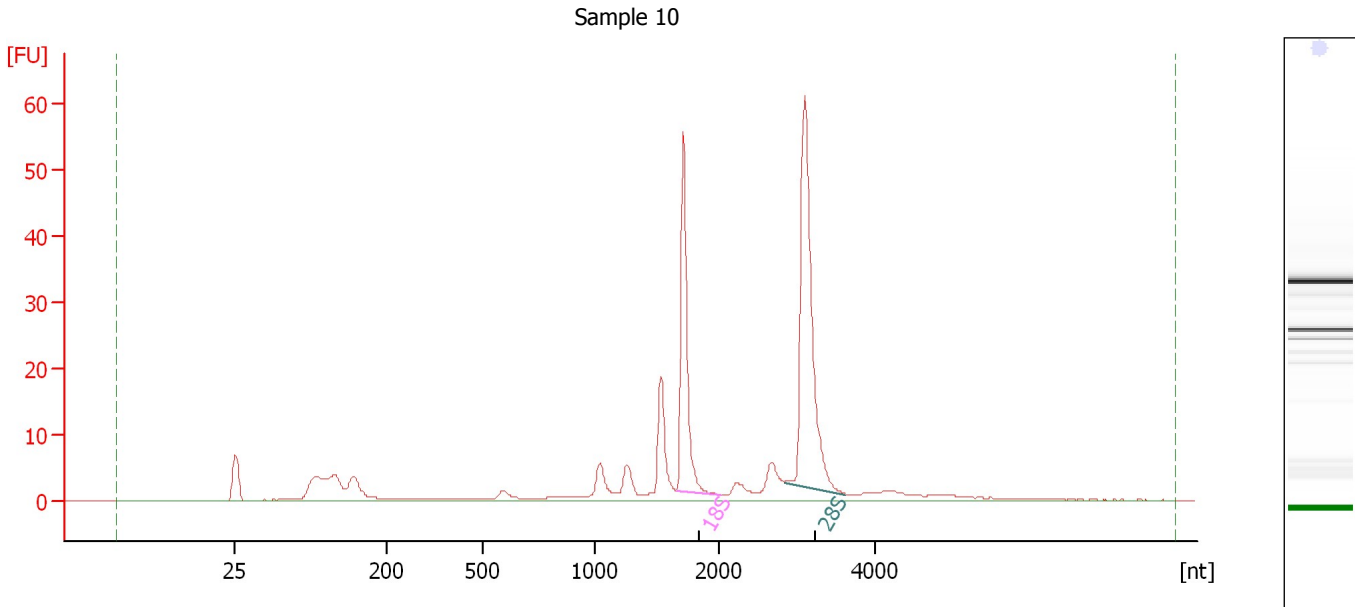
Fragment table for sample 9 : Sample 9

Name	Start Size [nt]	End Size [nt]	Area	% of total Area
18S	1,629	1,817	59.9	9.3
28S	2,730	3,464	102.1	15.9

Assay Class: Eukaryote Total RNA Nano
 Data Path: C:\...ents and Settings\Bioanalyzer\2013-10-23\2013-10-23_007.xad

Created: 10/23/2013 3:55:08 PM
 Modified: 10/23/2013 4:24:25 PM

Electropherogram Summary Continued ...



Overall Results for sample 10 : Sample 10

RNA Area:	219.5	RNA Integrity Number (RIN):	8.5 (B.02.08, Anomaly Threshold(s) manually adapted)
RNA Concentration:	148 ng/μl	Result Flagging Color:	
rRNA Ratio [28s / 18s]:	1.6	Result Flagging Label:	RIN: 8.50

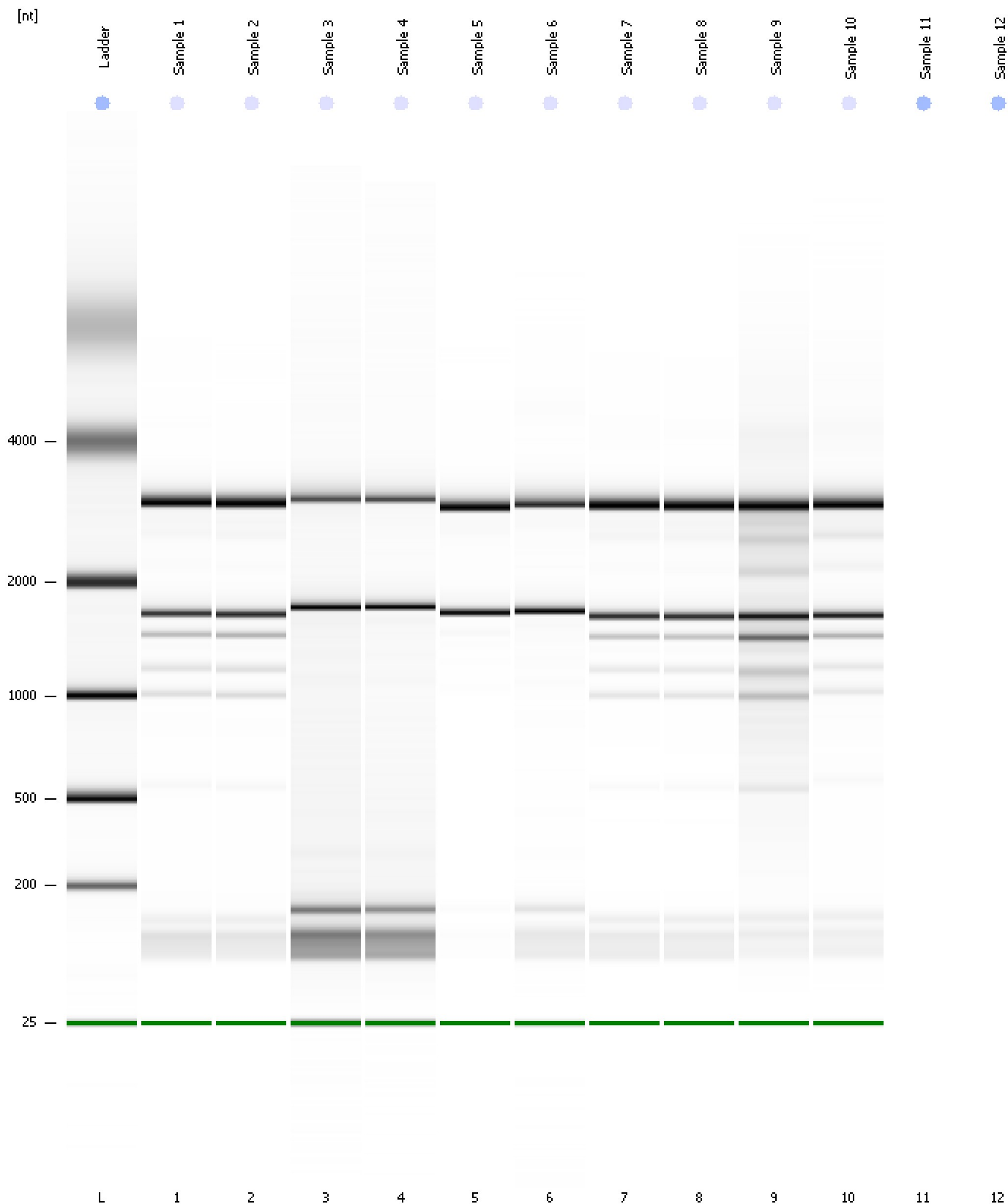
Fragment table for sample 10 : Sample 10

Name	Start Size [nt]	End Size [nt]	Area	% of total Area
18S	1,658	2,018	41.0	18.7
28S	2,839	3,620	65.9	30.0

Assay Class: Eukaryote Total RNA Nano
Data Path: C:\...ents and Settings\Bioanalyzer\2013-10-23\2013-10-23_007.xad

Created: 10/23/2013 3:55:08 PM
Modified: 10/23/2013 4:24:25 PM

Gel Image



Assay Class: Eukaryote Total RNA Nano
Data Path: C:\...ents and Settings\Bioanalyzer\2013-10-23\2013-10-23_007.xad

Created: 10/23/2013 3:55:08 PM
Modified: 10/23/2013 4:24:25 PM

Invalid Samples

Sample 11 has not been run, no results available.

Sample 12 has not been run, no results available.