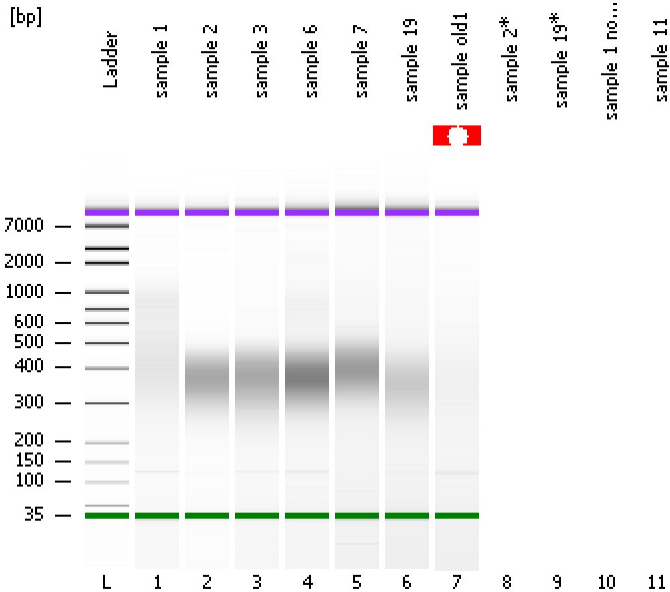


Assay Class: High Sensitivity DNA Assay  
Data Path: C:\...ents and Settings\Bioanalyzer\2013-10-24\2013-10-24\_003.xad

Created: 10/24/2013 11:44:10 AM  
Modified: 10/24/2013 12:13:45 PM

**Electrophoresis File Run Summary**



Instrument Information:

Instrument Name: DE13701086      Firmware: C.01.069  
Serial#: DE13701086      Type: G2938B

Assay Information:

Assay Origin Path: C:\Program Files\Agilent\2100 bioanalyzer\2100 expert\assays\dsDNA\High Sensitivity DNA.xsy  
Assay Class: High Sensitivity DNA Assay  
Version: 1.03  
Assay Comments: Copyright © 2003-2010 Agilent Technologies

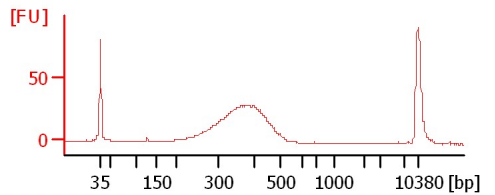
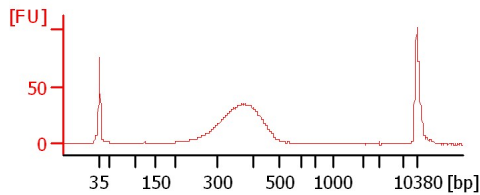
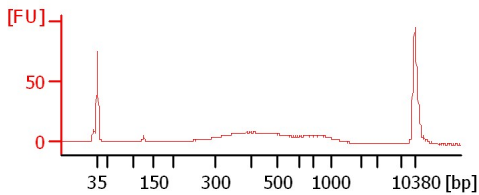
Chip Information:

Chip Lot #:      Reagent Kit Lot #:      Chip Comments:

sample 1

sample 2

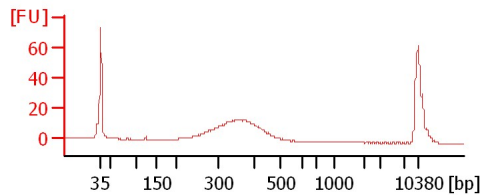
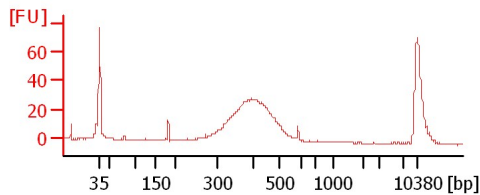
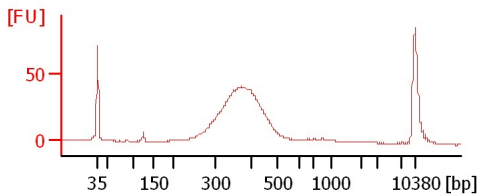
sample 3



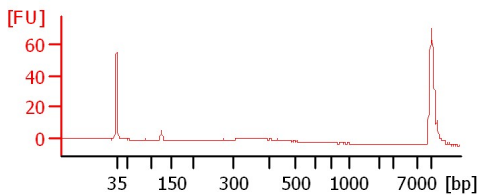
sample 6

sample 7

sample 19



sample old1



Assay Class: High Sensitivity DNA Assay  
Data Path: C:\...ents and Settings\Bioanalyzer\2013-10-24\2013-10-24\_003.xad

Created: 10/24/2013 11:44:10 AM  
Modified: 10/24/2013 12:13:45 PM

**Electrophoresis File Run Summary (Chip Summary)**

Sample Name	Sample Comment	Rest. Digest	Status	Observation	Result Label	Result Color
sample 1		<input type="checkbox"/>	✓			
sample 2		<input type="checkbox"/>	✓			
sample 3		<input type="checkbox"/>	✓			
sample 6		<input type="checkbox"/>	✓			
sample 7		<input type="checkbox"/>	✓			
sample 19		<input type="checkbox"/>	✓			
sample old1		<input type="checkbox"/>	✗			
sample 2*		<input type="checkbox"/>	✗			
sample 19*		<input type="checkbox"/>	✗			
sample 1 no dil		<input type="checkbox"/>	✗			
sample 11		<input type="checkbox"/>				
Ladder		<input type="checkbox"/>	✓			

**Chip Lot #**

**Reagent Kit Lot #**

**Chip Comments :**

Assay Class: High Sensitivity DNA Assay  
Data Path: C:\...ents and Settings\Bioanalyzer\2013-10-24\2013-10-24\_003.xad

Created: 10/24/2013 11:44:10 AM  
Modified: 10/24/2013 12:13:45 PM

**Electrophoresis Assay Details**

**General Analysis Settings**

Number of Available Sample and Ladder Wells (Max.) : 12  
Minimum Visible Range [s] : 32  
Maximum Visible Range [s] : 138  
Start Analysis Time Range [s] : 33  
End Analysis Time Range [s] : 137.5  
Ladder Concentration [pg/μl] : 1950  
Uses Standard Area for Ladder Fragments  
Lower Marker Concentration [pg/μl] : 125  
Upper Marker Concentration [pg/μl] : 75  
Used Upper Marker for Quantitation  
Standard Curve Fit is Point to Point  
Show Data Aligned to Lower and Upper Marker

**Integrator Settings**

Integration Start Time [s] : 33.05  
Integration End Time [s] : 137  
Slope Threshold : 0.8  
Height Threshold [FU] : 5  
Area Threshold : 0.1  
Width Threshold [s] : 0.6  
Baseline Plateau [s] : 0.5

**Filter Settings**

Filter Width [s] : 0.5  
Polynomial Order : 4

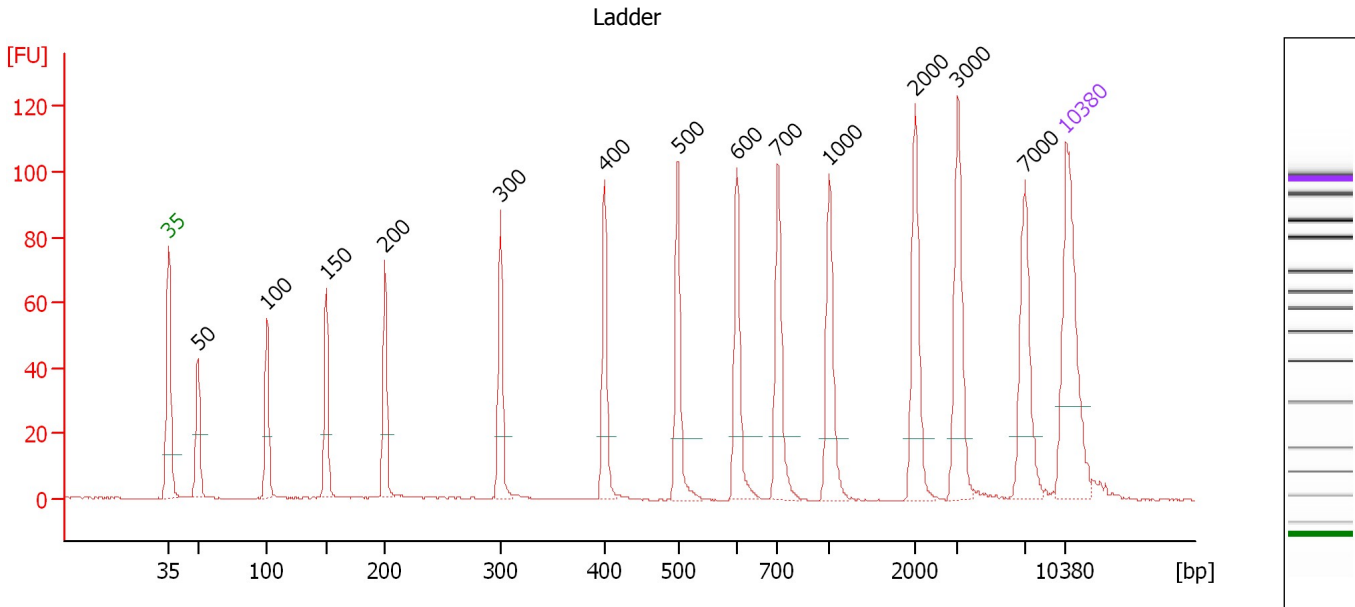
**Ladder**

Ladder Peak	Size	Area
1	35	160
2	50	210
3	100	208
4	150	221
5	200	242
6	300	270
7	400	305
8	500	306
9	600	336
10	700	321
11	1000	366
12	2000	413
13	3000	411
14	7000	400
15	10380	214

Assay Class: High Sensitivity DNA Assay  
 Data Path: C:\...ents and Settings\Bioanalyzer\2013-10-24\2013-10-24\_003.xad

Created: 10/24/2013 11:44:10 AM  
 Modified: 10/24/2013 12:13:45 PM

**Electropherogram Summary**



**Overall Results for Ladder**

Noise: 0.1

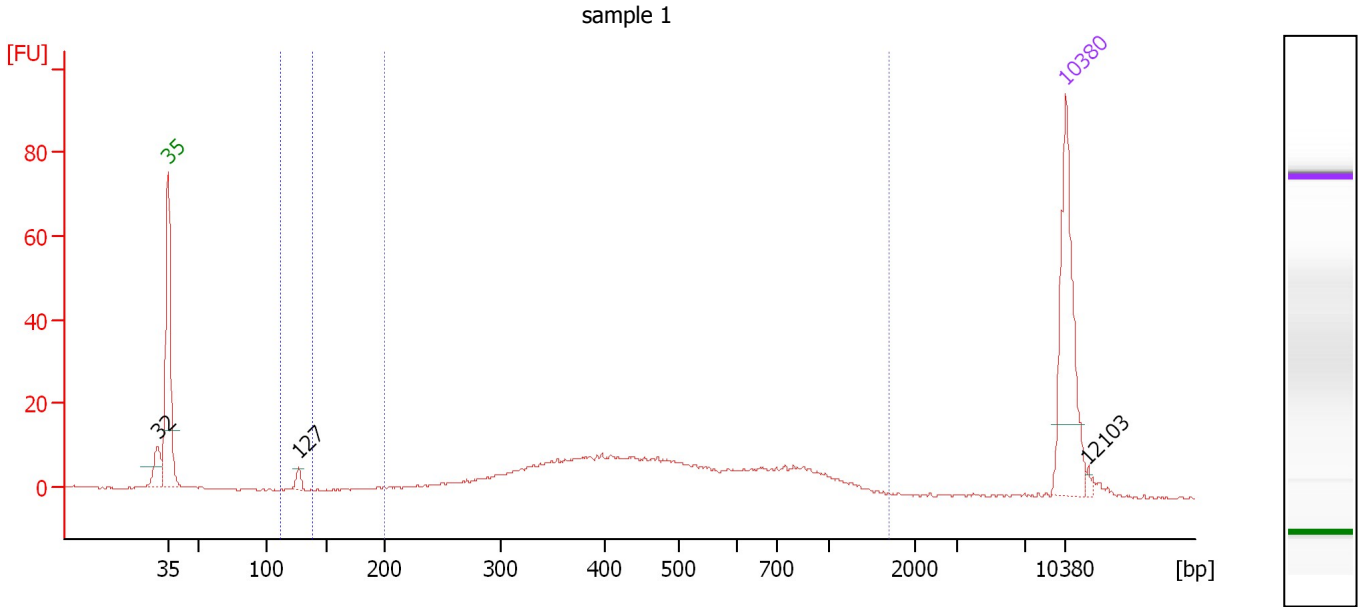
**Peak table for Ladder**

Peak	Size [bp]	Conc. [pg/μl]	Molarity [pmol/l]	Observations
1	35	125.00	5,411.3	Lower Marker
2	50	150.00	4,545.5	Ladder Peak
3	100	150.00	2,272.7	Ladder Peak
4	150	150.00	1,515.2	Ladder Peak
5	200	150.00	1,136.4	Ladder Peak
6	300	150.00	757.6	Ladder Peak
7	400	150.00	568.2	Ladder Peak
8	500	150.00	454.5	Ladder Peak
9	600	150.00	378.8	Ladder Peak
10	700	150.00	324.7	Ladder Peak
11	1,000	150.00	227.3	Ladder Peak
12	2,000	150.00	113.6	Ladder Peak
13	3,000	150.00	75.8	Ladder Peak
14	7,000	150.00	32.5	Ladder Peak
15	10,380	75.00	10.9	Upper Marker

Assay Class: High Sensitivity DNA Assay  
 Data Path: C:\...ents and Settings\Bioanalyzer\2013-10-24\2013-10-24\_003.xad

Created: 10/24/2013 11:44:10 AM  
 Modified: 10/24/2013 12:13:45 PM

**Electropherogram Summary Continued ...**



**Overall Results for sample 1 : sample 1**

Number of peaks found: 3                      Corr. Area 1: 255.7  
 Noise: 0.2                                      Corr. Area 2: 4.7

**Peak table for sample 1 : sample 1**

Peak	Size [bp]	Conc. [pg/μl]	Molarity [pmol/l]	Observations
1	32	0.00	0.0	
2	35	125.00	5,411.3	Lower Marker
3	127	6.93	82.8	
4	10,380	75.00	10.9	Upper Marker
5	12,103	0.00	0.0	

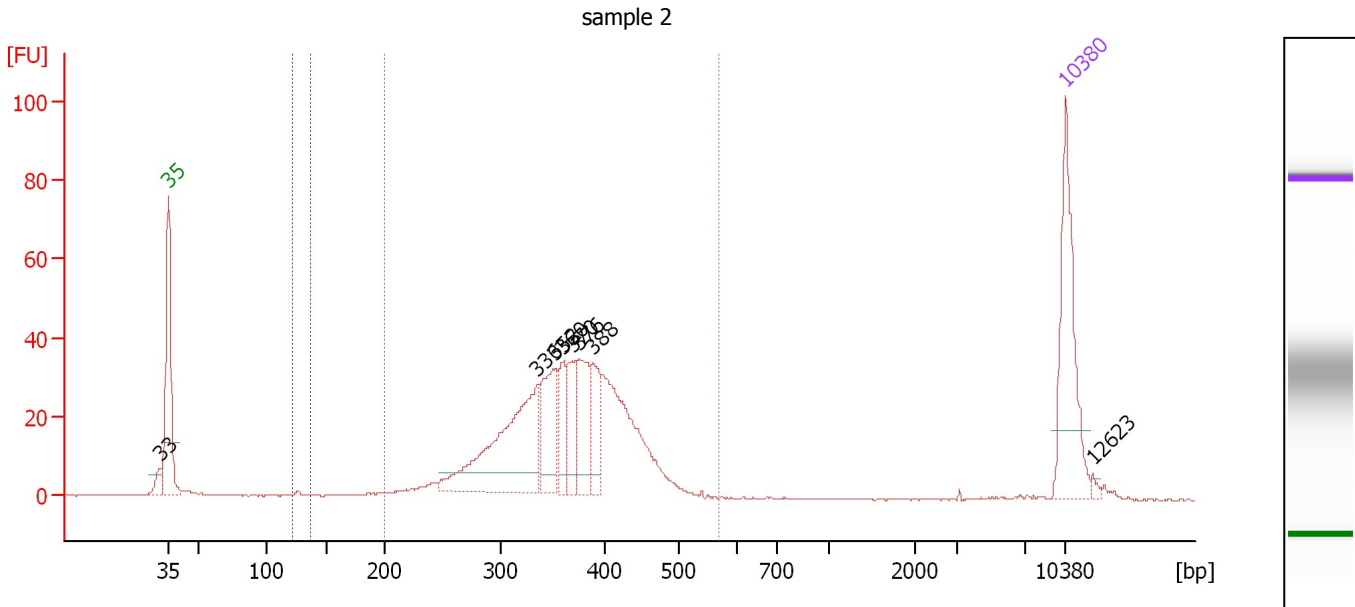
**Region table for sample 1 : sample 1**

From [bp]	To [bp]	Average Size [bp]	Molarity [pmol/l]	Conc. [pg/μl]	Corr. Area	% of Total	Size distribution in CV [%]	Color
111	138	126	87.2	7.26	4.7	2	1.8	Blue
200	1,690	524	993.8	278.39	255.7	88	44.9	Dark Blue

Assay Class: High Sensitivity DNA Assay  
 Data Path: C:\...ents and Settings\Bioanalyzer\2013-10-24\2013-10-24\_003.xad

Created: 10/24/2013 11:44:10 AM  
 Modified: 10/24/2013 12:13:45 PM

**Electropherogram Summary Continued ...**



**Overall Results for sample 2 : sample 2**

Number of peaks found: 8                      Corr. Area 1: 541.6  
 Noise: 0.1                                      Corr. Area 2: 2.2

**Peak table for sample 2 : sample 2**

Peak	Size [bp]	Conc. [pg/μl]	Molarity [pmol/l]	Observations
1	33	0.00	0.0	
2	35	125.00	5,411.3	Lower Marker
3	336	159.82	721.4	
4	352	59.32	255.7	
5	360	30.60	128.9	
6	370	35.02	143.6	
7	376	54.10	218.3	
8	388	38.23	149.2	
9	10,380	75.00	10.9	Upper Marker
10	12,623	0.00	0.0	

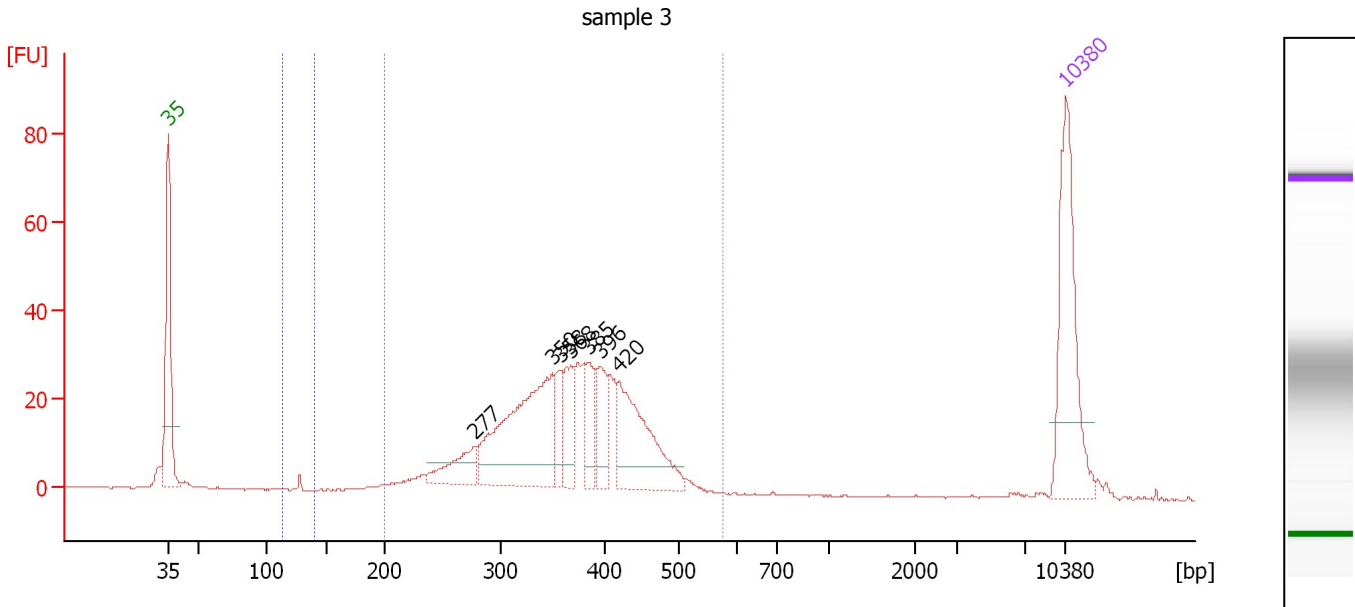
**Region table for sample 2 : sample 2**

From [bp]	To [bp]	Average Size [bp]	Molarity [pmol/l]	Conc. [pg/μl]	Corr. Area	% of Total	Size distribution in CV [%]	Color
121	137	127	38.1	3.21	2.2	0	3.3	Blue
200	571	364	2,529.8	585.27	541.6	91	15.9	Dark Blue

Assay Class: High Sensitivity DNA Assay  
 Data Path: C:\...ents and Settings\Bioanalyzer\2013-10-24\2013-10-24\_003.xad

Created: 10/24/2013 11:44:10 AM  
 Modified: 10/24/2013 12:13:45 PM

**Electropherogram Summary Continued ...**



**Overall Results for sample 3 : sample 3**

Number of peaks found: 7                      Corr. Area 1: 498.4  
 Noise: 0.1                                      Corr. Area 2: 1.4

**Peak table for sample 3 : sample 3**

Peak	Size [bp]	Conc. [pg/μl]	Molarity [pmol/l]	Observations
1	35	125.00	5,411.3	Lower Marker
2	277	31.57	172.6	
3	350	144.09	624.1	
4	358	20.89	88.5	
5	368	30.71	126.4	
6	385	27.15	107.0	
7	396	31.64	121.2	
8	420	85.41	308.4	
9	10,380	75.00	10.9	Upper Marker

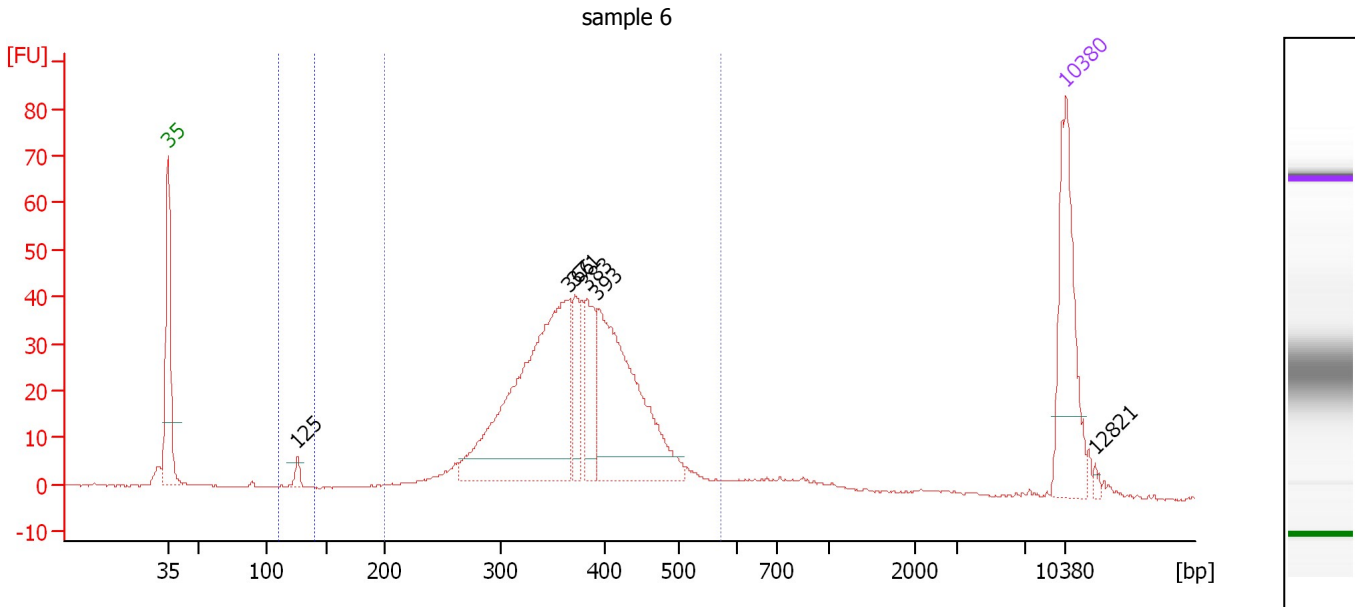
**Region table for sample 3 : sample 3**

From [bp]	To [bp]	Average Size [bp]	Molarity [pmol/l]	Conc. [pg/μl]	Corr. Area	% of Total	Size distribution in CV [%]	Color
113	139	127	21.2	1.78	1.4	0	0.8	Blue
200	577	366	2,113.2	487.95	498.4	96	17.3	Dark Blue

Assay Class: High Sensitivity DNA Assay  
 Data Path: C:\...ents and Settings\Bioanalyzer\2013-10-24\2013-10-24\_003.xad

Created: 10/24/2013 11:44:10 AM  
 Modified: 10/24/2013 12:13:45 PM

**Electropherogram Summary Continued ...**



**Overall Results for sample 4 : sample 6**

Number of peaks found: 6                      Corr. Area 1: 633.4  
 Noise: 0.2                                      Corr. Area 2: 6.7

**Peak table for sample 4 : sample 6**

Peak	Size [bp]	Conc. [pg/μl]	Molarity [pmol/l]	Observations
1	35	125.00	5,411.3	Lower Marker
2	125	8.06	97.4	
3	366	272.53	1,128.0	
4	371	33.01	134.8	
5	383	47.73	188.9	
6	393	181.39	699.5	
7	10,380	75.00	10.9	Upper Marker
8	12,821	0.00	0.0	

**Region table for sample 4 : sample 6**

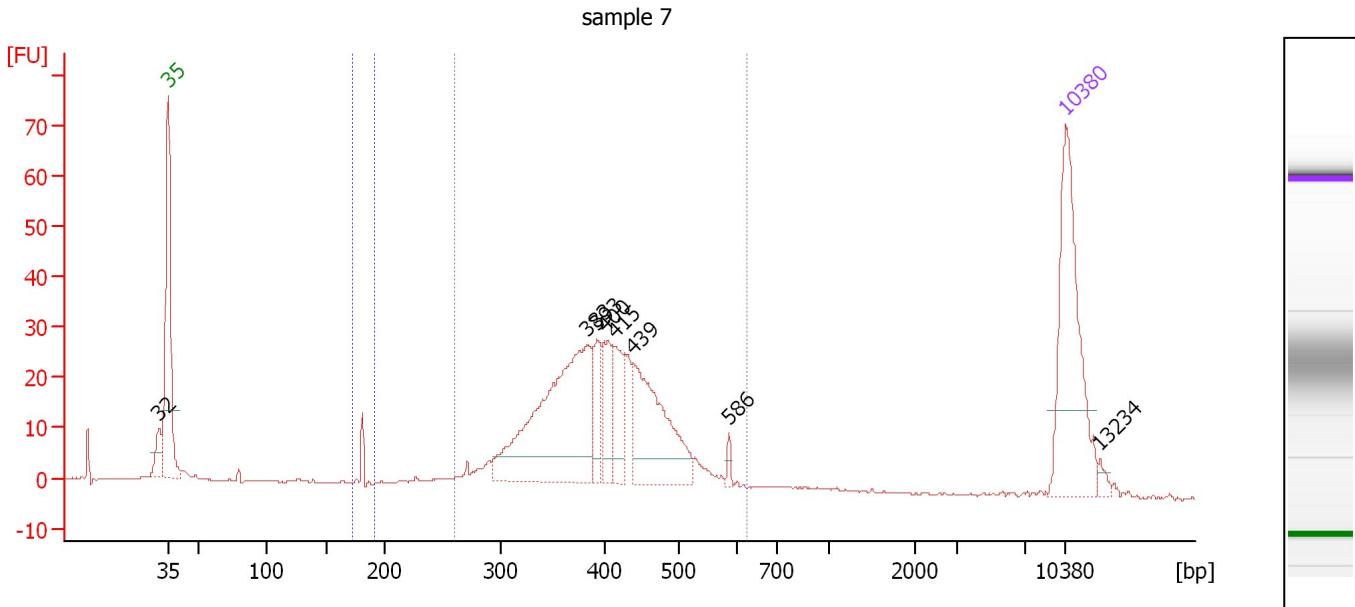
From [bp]	To [bp]	Average Size [bp]	Molarity [pmol/l]	Conc. [pg/μl]	Corr. Area	% of Total	Size distribution in CV [%]	Color
109	139	125	117.0	9.64	6.7	1	3.4	Blue
200	572	374	2,819.2	670.36	633.4	89	16.4	Dark Blue



Assay Class: High Sensitivity DNA Assay  
 Data Path: C:\...ents and Settings\Bioanalyzer\2013-10-24\2013-10-24\_003.xad

Created: 10/24/2013 11:44:10 AM  
 Modified: 10/24/2013 12:13:45 PM

**Electropherogram Summary Continued ...**



**Overall Results for sample 5 : sample 7**

Number of peaks found: 8                      Corr. Area 1: 430.1  
 Noise: 0.1                                      Corr. Area 2: 6.3

**Peak table for sample 5 : sample 7**

Peak	Size [bp]	Conc. [pg/μl]	Molarity [pmol/l]	Observations
1	32	0.00	0.0	
2	35	125.00	5,411.3	Lower Marker
3	383	161.97	641.4	
4	393	22.42	86.5	
5	400	28.26	107.0	
6	415	29.76	108.8	
7	439	84.83	293.1	
8	586	3.34	8.6	
9	10,380	75.00	10.9	Upper Marker
10	13,234	0.00	0.0	

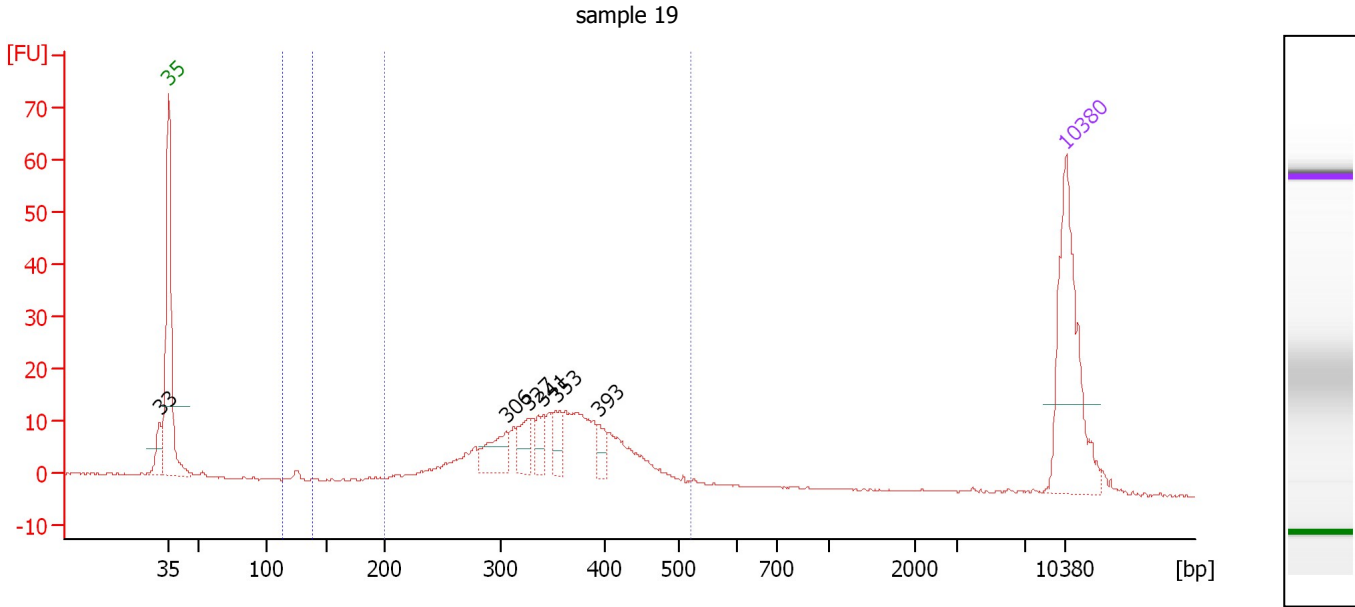
**Region table for sample 5 : sample 7**

From [bp]	To [bp]	Average Size [bp]	Molarity [pmol/l]	Conc. [pg/μl]	Corr. Area	% of Total	Size distribution in CV [%]	Color
173	190	180	63.7	7.59	6.3	1	1.1	Blue
261	625	404	1,593.0	410.15	430.1	86	16.2	Dark Blue

Assay Class: High Sensitivity DNA Assay  
 Data Path: C:\...ents and Settings\Bioanalyzer\2013-10-24\2013-10-24\_003.xad

Created: 10/24/2013 11:44:10 AM  
 Modified: 10/24/2013 12:13:45 PM

**Electropherogram Summary Continued ...**



**Overall Results for sample 6 : sample 19**

Number of peaks found: 6                      Corr. Area 1: 234.9  
 Noise: 0.1                                      Corr. Area 2: 1.5

**Peak table for sample 6 : sample 19**

Peak	Size [bp]	Conc. [pg/μl]	Molarity [pmol/l]	Observations
1	33	0.00	0.0	
2	35	125.00	5,411.3	Lower Marker
3	306	26.03	129.0	
4	327	18.56	85.9	
5	341	14.36	63.8	
6	353	13.53	58.0	
7	393	10.94	42.1	
8	10,380	75.00	10.9	Upper Marker

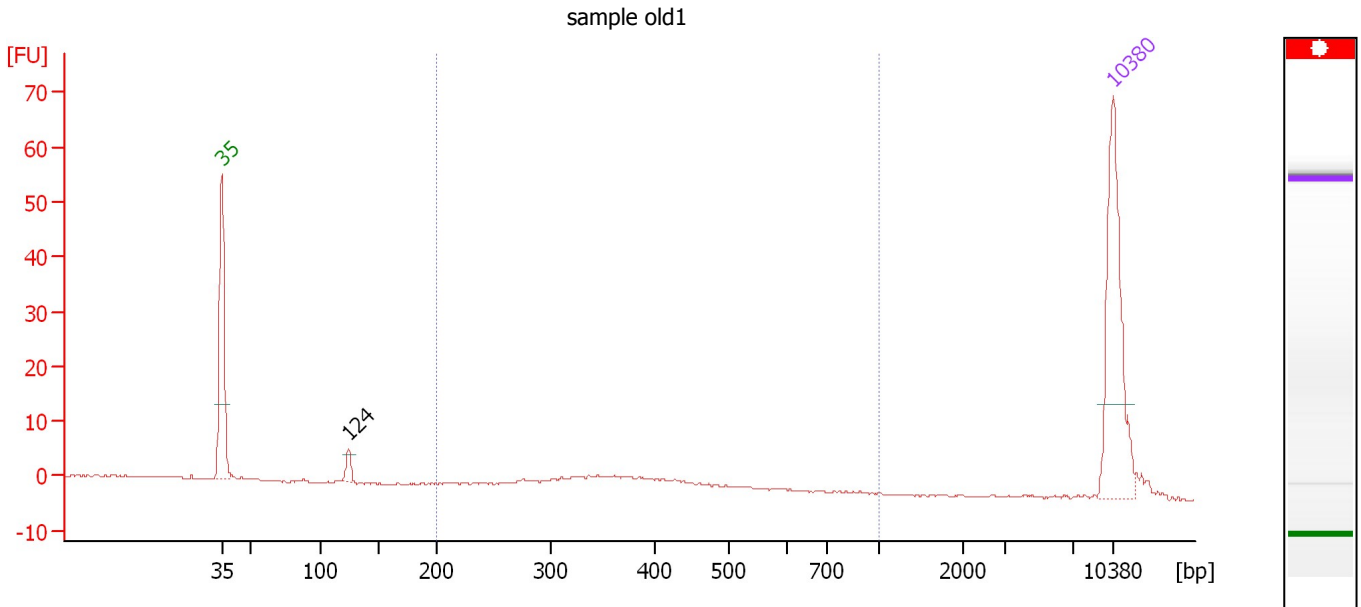
**Region table for sample 6 : sample 19**

From [bp]	To [bp]	Average Size [bp]	Molarity [pmol/l]	Conc. [pg/μl]	Corr. Area	% of Total	Size distribution in CV [%]	Color
113	138	125	27.3	2.24	1.5	1	1.6	Blue
200	523	353	1,216.6	271.68	234.9	86	17.1	Dark Blue

Assay Class: High Sensitivity DNA Assay  
 Data Path: C:\...ents and Settings\Bioanalyzer\2013-10-24\2013-10-24\_003.xad

Created: 10/24/2013 11:44:10 AM  
 Modified: 10/24/2013 12:13:45 PM

**Electropherogram Summary Continued ...**



**Setpoint Deviations for sample 7 : sample old1**

End Analysis Time Range [s] : 126.9

**Overall Results for sample 7 : sample old1**

Number of peaks found: 1                      Corr. Area 1: 0.0  
 Noise: 0.1

**Peak table for sample 7 : sample old1**

Peak	Size [bp]	Conc. [pg/μl]	Molarity [pmol/l]	Observations
1	35	125.00	5,411.3	Lower Marker
2	124	9.63	117.3	
3	10,380	75.00	10.9	Upper Marker

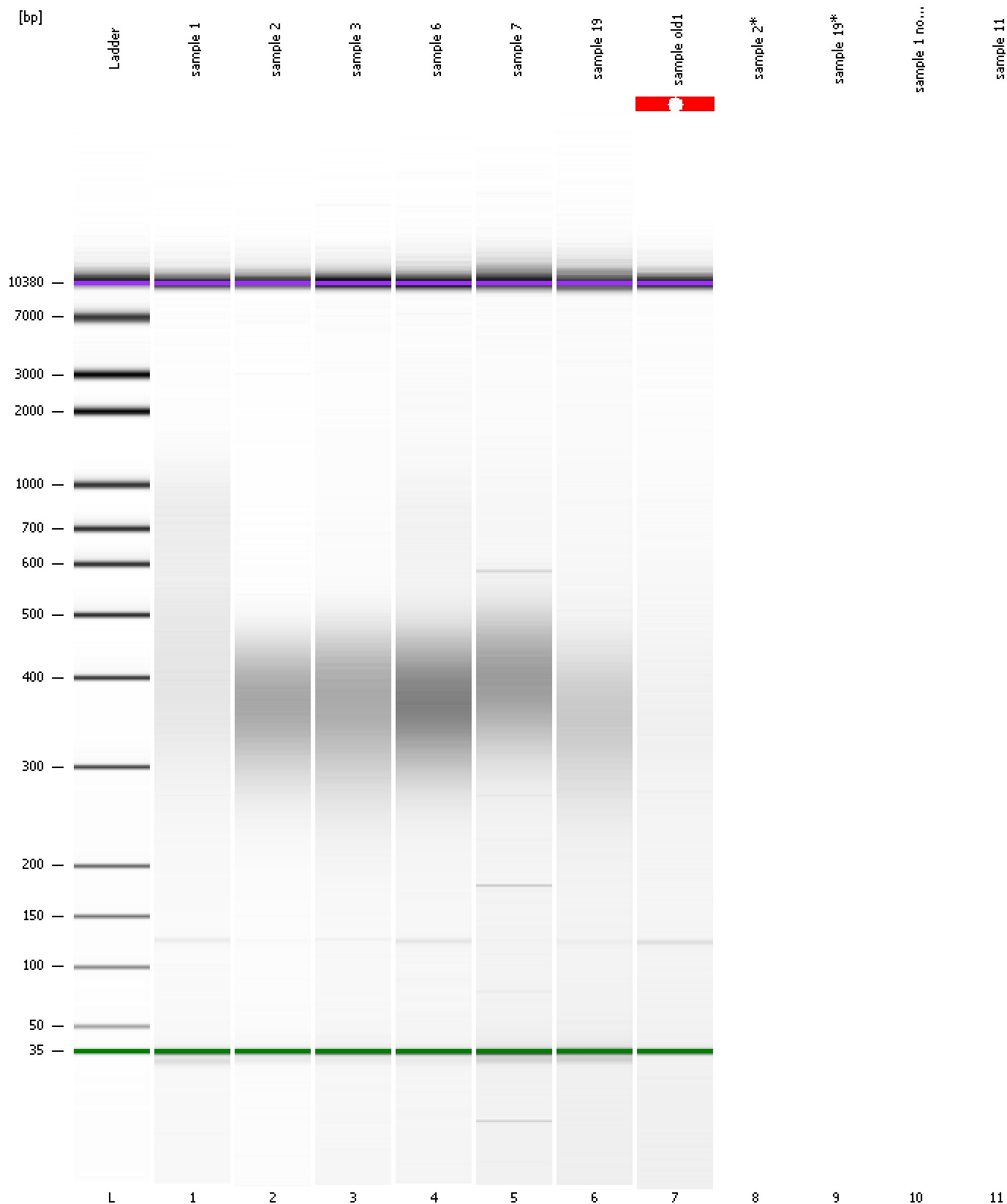
**Region table for sample 7 : sample old1**

From [bp]	To [bp]	Average Size [bp]	Molarity [pmol/l]	Conc. [pg/μl]	Corr. Area	% of Total	Size distribution in CV [%]	Color
200	1,000	343	0.0	0.01	0.0	0	2.6	Blue

Assay Class: High Sensitivity DNA Assay  
Data Path: C:\...ents and Settings\Bioanalyzer\2013-10-24\2013-10-24\_003.xad

Created: 10/24/2013 11:44:10 AM  
Modified: 10/24/2013 12:13:45 PM

**Gel Image**



Assay Class: High Sensitivity DNA Assay  
Data Path: C:\...ents and Settings\Bioanalyzer\2013-10-24\2013-10-24\_003.xad

Created: 10/24/2013 11:44:10 AM  
Modified: 10/24/2013 12:13:45 PM

**Invalid Samples**

Sample 8 has not been run, no results available.

Sample 9 has not been run, no results available.

Sample 10 has not been run, no results available.

Sample 11 has not been run, no results available.