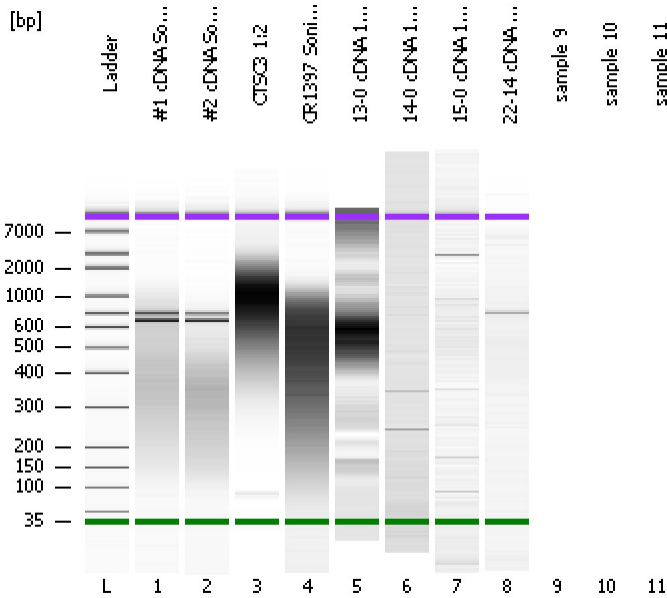


Assay Class: High Sensitivity DNA Assay  
Data Path: C:\...ents and Settings\Bioanalyzer\2013-10-24\2013-10-24\_005.xad

Created: 10/24/2013 1:31:01 PM  
Modified: 10/24/2013 2:08:49 PM

**Electrophoresis File Run Summary**



Instrument Information:

Instrument Name: DE13701086      Firmware: C.01.069  
Serial#: DE13701086      Type: G2938B

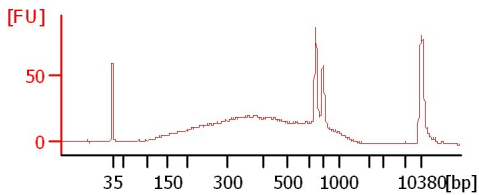
Assay Information:

Assay Origin Path: C:\Program Files\Agilent\2100 bioanalyzer\2100 expert\assays\dsDNA\High Sensitivity DNA.xsy  
Assay Class: High Sensitivity DNA Assay  
Version: 1.03  
Assay Comments: Copyright © 2003-2010 Agilent Technologies

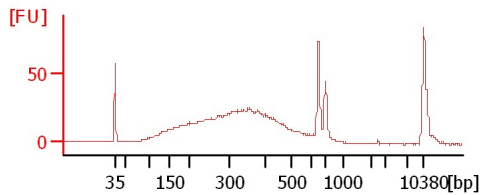
Chip Information:

Chip Lot #:   
Reagent Kit Lot #:   
Chip Comments:

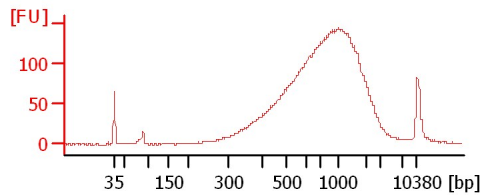
#1 cDNA Soni (4Cycles)



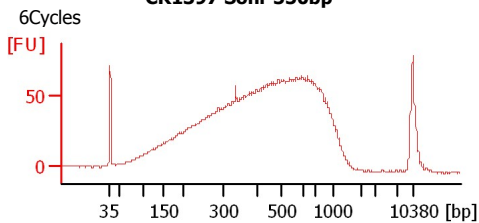
#2 cDNA Soni (6Cycles)



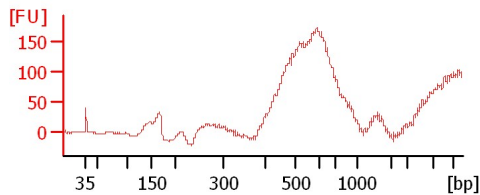
CTSC3 1:2



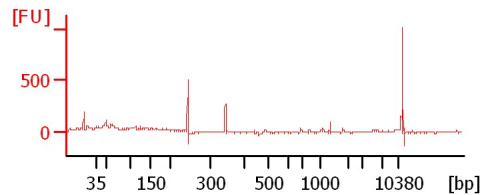
CR1397 Soni-550bp



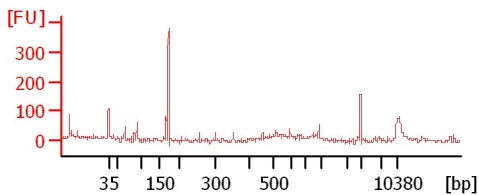
13-0 cDNA 1:18



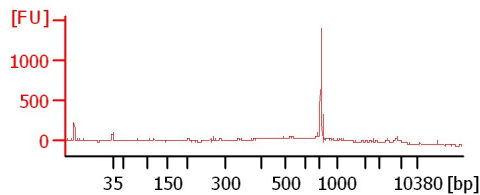
14-0 cDNA 1:20



15-0 cDNA 1:20



22-14 cDNA 1:20



Assay Class: High Sensitivity DNA Assay  
Data Path: C:\...ents and Settings\Bioanalyzer\2013-10-24\2013-10-24\_005.xad

Created: 10/24/2013 1:31:01 PM  
Modified: 10/24/2013 2:08:49 PM

**Electrophoresis File Run Summary (Chip Summary)**

Sample Name	Sample Comment	Rest. Digest	Status	Observation	Result Label	Result Color
#1 cDNA Soni (4Cycles)		<input type="checkbox"/>	✓			
#2 cDNA Soni (6Cycles)		<input type="checkbox"/>	✓			
CTSC3 1:2		<input type="checkbox"/>	✓			
CR1397 Soni-550bp	6Cycles	<input type="checkbox"/>	✓			
13-0 cDNA 1:18		<input type="checkbox"/>	✓			
14-0 cDNA 1:20		<input type="checkbox"/>	✓			
15-0 cDNA 1:20		<input type="checkbox"/>	✓			
22-14 cDNA 1:20		<input type="checkbox"/>	✓			
sample 9		<input type="checkbox"/>				
sample 10		<input type="checkbox"/>				
sample 11		<input type="checkbox"/>				
Ladder		<input type="checkbox"/>	✓			

**Chip Lot #**

**Reagent Kit Lot #**

**Chip Comments :**

Assay Class: High Sensitivity DNA Assay  
Data Path: C:\...ents and Settings\Bioanalyzer\2013-10-24\2013-10-24\_005.xad

Created: 10/24/2013 1:31:01 PM  
Modified: 10/24/2013 2:08:49 PM

**Electrophoresis Assay Details**

**General Analysis Settings**

Number of Available Sample and Ladder Wells (Max.) : 12  
Minimum Visible Range [s] : 32  
Maximum Visible Range [s] : 138  
Start Analysis Time Range [s] : 33  
End Analysis Time Range [s] : 137.5  
Ladder Concentration [pg/μl] : 1950  
Uses Standard Area for Ladder Fragments  
Lower Marker Concentration [pg/μl] : 125  
Upper Marker Concentration [pg/μl] : 75  
Used Upper Marker for Quantitation  
Standard Curve Fit is Point to Point  
Show Data Aligned to Lower and Upper Marker

**Integrator Settings**

Integration Start Time [s] : 33.05  
Integration End Time [s] : 137  
Slope Threshold : 0.8  
Height Threshold [FU] : 5  
Area Threshold : 0.1  
Width Threshold [s] : 0.6  
Baseline Plateau [s] : 0.5

**Filter Settings**

Filter Width [s] : 0.5  
Polynomial Order : 4

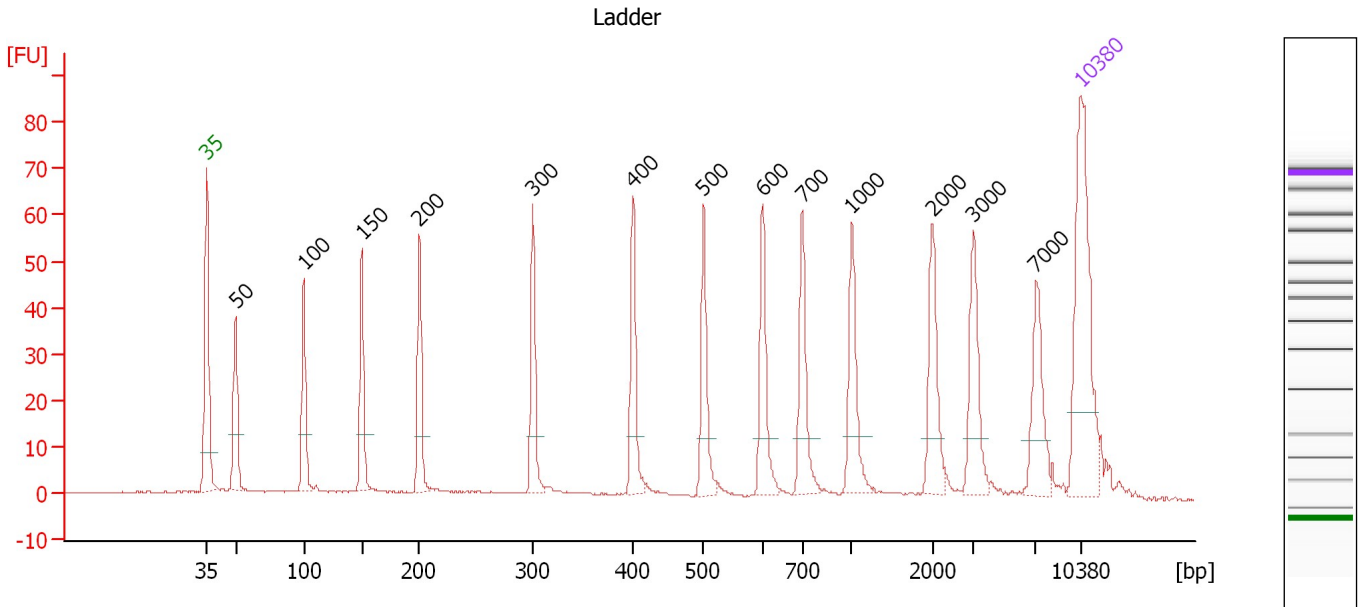
**Ladder**

Ladder Peak	Size	Area
1	35	160
2	50	210
3	100	208
4	150	221
5	200	242
6	300	270
7	400	305
8	500	306
9	600	336
10	700	321
11	1000	366
12	2000	413
13	3000	411
14	7000	400
15	10380	214

Assay Class: High Sensitivity DNA Assay  
 Data Path: C:\...ents and Settings\Bioanalyzer\2013-10-24\2013-10-24\_005.xad

Created: 10/24/2013 1:31:01 PM  
 Modified: 10/24/2013 2:08:49 PM

**Electropherogram Summary**



**Overall Results for Ladder**

Noise: 0.2

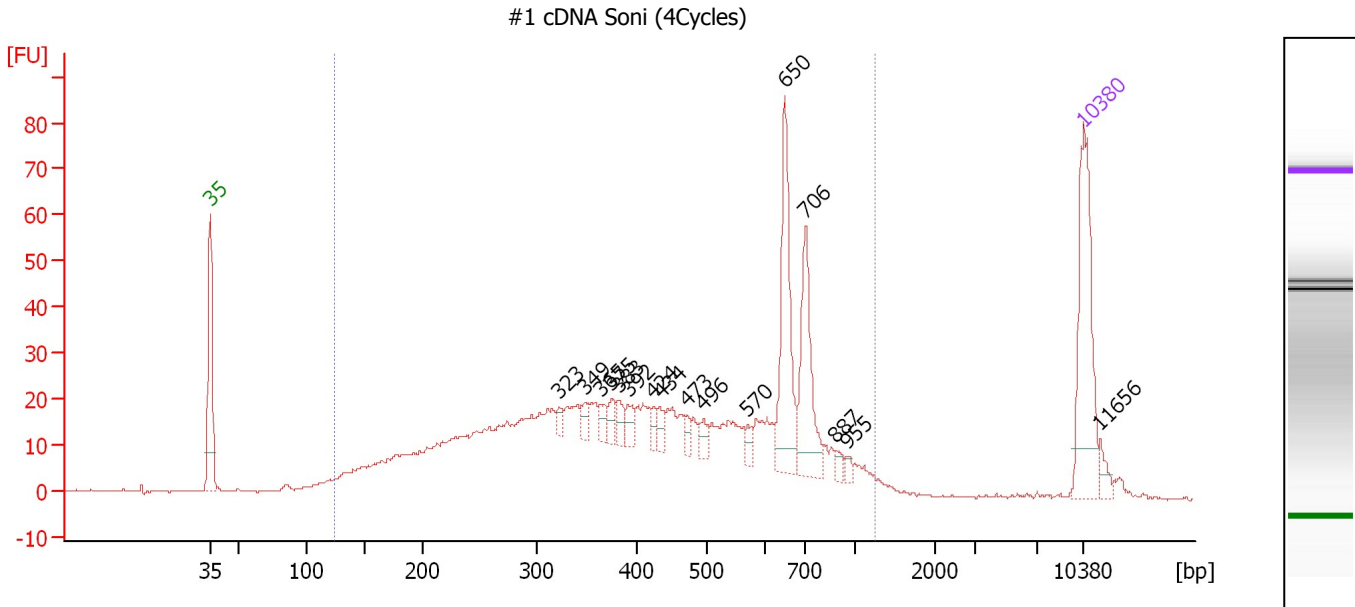
**Peak table for Ladder**

Peak	Size [bp]	Conc. [pg/μl]	Molarity [pmol/l]	Observations
1	35	125.00	5,411.3	Lower Marker
2	50	150.00	4,545.5	Ladder Peak
3	100	150.00	2,272.7	Ladder Peak
4	150	150.00	1,515.2	Ladder Peak
5	200	150.00	1,136.4	Ladder Peak
6	300	150.00	757.6	Ladder Peak
7	400	150.00	568.2	Ladder Peak
8	500	150.00	454.5	Ladder Peak
9	600	150.00	378.8	Ladder Peak
10	700	150.00	324.7	Ladder Peak
11	1,000	150.00	227.3	Ladder Peak
12	2,000	150.00	113.6	Ladder Peak
13	3,000	150.00	75.8	Ladder Peak
14	7,000	150.00	32.5	Ladder Peak
15	10,380	75.00	10.9	Upper Marker

Assay Class: High Sensitivity DNA Assay  
 Data Path: C:\...ents and Settings\Bioanalyzer\2013-10-24\2013-10-24\_005.xad

Created: 10/24/2013 1:31:01 PM  
 Modified: 10/24/2013 2:08:49 PM

**Electropherogram Summary Continued ...**



**Overall Results for sample 1 : #1 cDNA Soni (4Cycles)**

Number of peaks found: 16                      Corr. Area 1: 937.6  
 Noise: 0.1

**Peak table for sample 1 : #1 cDNA Soni (4Cycles)**

Peak	Size [bp]	Conc. [pg/μl]	Molarity [pmol/l]	Observations
1	35	125.00	5,411.3	Lower Marker
2	323	6.11	28.7	
3	349	8.46	36.7	
4	365	9.76	40.5	
5	375	8.86	35.7	
6	383	9.98	39.5	
7	392	11.13	43.0	
8	424	8.99	32.1	
9	434	8.16	28.5	
10	473	7.40	23.7	
11	496	9.19	28.0	
12	570	6.43	17.1	
13	650	88.07	205.2	
14	706	69.22	148.6	
15	887	5.26	9.0	
16	955	4.01	6.4	
17	10,380	75.00	10.9	Upper Marker
18	11,656	0.00	0.0	

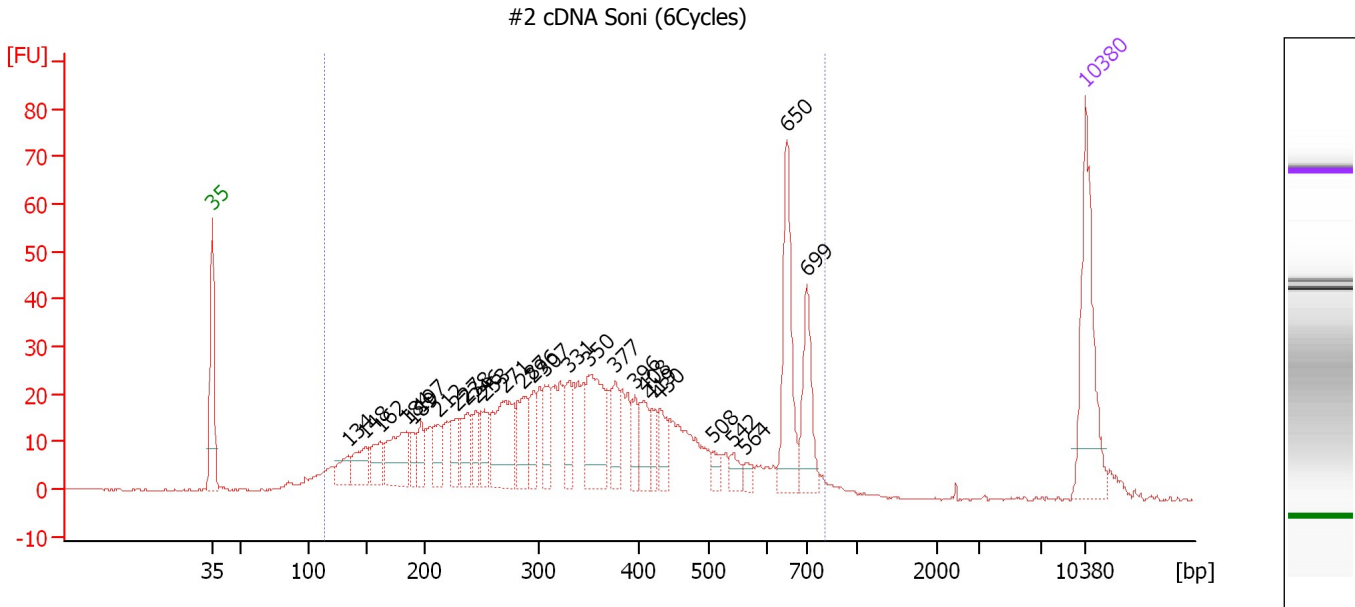
**Region table for sample 1 : #1 cDNA Soni (4Cycles)**

From [bp]	To [bp]	Average Size [bp]	Molarity [pmol/l]	Conc. [pg/μl]	Corr. Area	% of Total	Size distribution in CV [%]	Color
124	1,248	459	5,474.7	1,193.88	937.6	96	44.2	Blue

Assay Class: High Sensitivity DNA Assay  
 Data Path: C:\...ents and Settings\Bioanalyzer\2013-10-24\2013-10-24\_005.xad

Created: 10/24/2013 1:31:01 PM  
 Modified: 10/24/2013 2:08:49 PM

**Electropherogram Summary Continued ...**



**Overall Results for sample 2 : #2 cDNA Soni (6Cycles)**

Number of peaks found: 27                      Corr. Area 1: 935.4  
 Noise: 0.1

**Peak table for sample 2 : #2 cDNA Soni (6Cycles)**

Peak	Size [bp]	Conc. [pg/μl]	Molarity [pmol/l]	Observations
1	35	125.00	5,411.3	Lower Marker
2	134	22.41	253.2	
3	148	32.32	330.1	
4	162	30.26	283.5	
5	184	61.20	502.7	
6	189	18.44	147.8	
7	197	21.14	162.6	
8	212	27.24	194.3	
9	227	25.57	170.3	
10	238	29.81	189.9	
11	246	22.06	136.0	
12	253	23.62	141.5	
13	271	81.78	457.7	
14	287	41.65	220.1	
15	296	26.36	134.9	
16	307	29.69	146.6	
17	331	28.91	132.4	
18	350	79.33	343.0	
19	377	30.69	123.3	
20	396	18.32	70.0	
21	408	28.12	104.3	
22	419	16.13	58.3	
23	430	25.55	90.0	
24	508	10.29	30.7	
25	542	11.32	31.6	
26	564	6.95	18.7	

Assay Class: High Sensitivity DNA Assay  
 Data Path: C:\...ents and Settings\Bioanalyzer\2013-10-24\2013-10-24\_005.xad

Created: 10/24/2013 1:31:01 PM  
 Modified: 10/24/2013 2:08:49 PM

### Electropherogram Summary Continued ...

#### ... Peak table for sample 2 : #2 cDNA Soni (6Cycles)

Peak	Size [bp]	Conc. [pg/μl]	Molarity [pmol/l]	Observations
27	650	81.47	190.0	
28	699	51.37	111.3	
29	▶ 10,380	75.00	10.9	Upper Marker

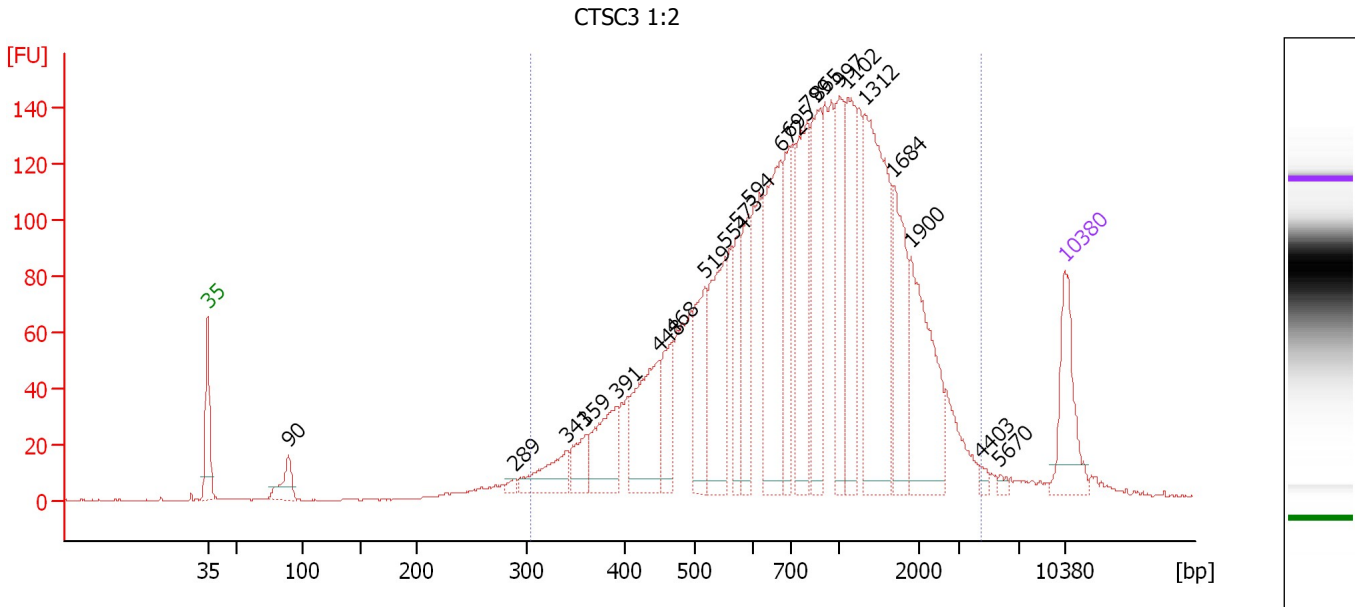
#### Region table for sample 2 : #2 cDNA Soni (6Cycles)

From [bp]	To [bp]	Average Size [bp]	Molarity [pmol/l]	Conc. [pg/μl]	Corr. Area	% of Total	Size distribution in CV [%]	Color
114	812	380	7,149.3	1,325.46	935.4	96	43.1	■

Assay Class: High Sensitivity DNA Assay  
 Data Path: C:\...ents and Settings\Bioanalyzer\2013-10-24\2013-10-24\_005.xad

Created: 10/24/2013 1:31:01 PM  
 Modified: 10/24/2013 2:08:49 PM

**Electropherogram Summary Continued ...**



**Overall Results for sample 3 : CTSC3 1:2**

Number of peaks found: 22                      Corr. Area 1: 3,107.6  
 Noise: 0.2

**Peak table for sample 3 : CTSC3 1:2**

Peak	Size [bp]	Conc. [pg/μl]	Molarity [pmol/l]	Observations
1	35	125.00	5,411.3	Lower Marker
2	90	50.15	848.6	
3	289	8.22	43.1	
4	341	67.30	299.4	
5	359	44.41	187.4	
6	391	97.42	377.4	
7	448	150.81	510.4	
8	468	72.74	235.6	
9	519	113.84	332.4	
10	554	152.16	416.0	
11	573	68.49	181.2	
12	594	100.30	255.8	
13	672	222.67	502.3	
14	695	108.07	235.7	
15	799	171.08	324.3	
16	865	140.67	246.3	
17	997	129.41	196.7	
18	1,102	131.98	181.5	
19	1,312	277.11	320.1	
20	1,684	113.81	102.4	
21	1,900	150.98	120.4	
22	4,403	5.71	2.0	
23	5,670	4.53	1.2	
24	10,380	75.00	10.9	Upper Marker



Assay Class: High Sensitivity DNA Assay  
Data Path: C:\...ents and Settings\Bioanalyzer\2013-10-24\2013-10-24\_005.xad

Created: 10/24/2013 1:31:01 PM  
Modified: 10/24/2013 2:08:49 PM

**Electropherogram Summary Continued ...**

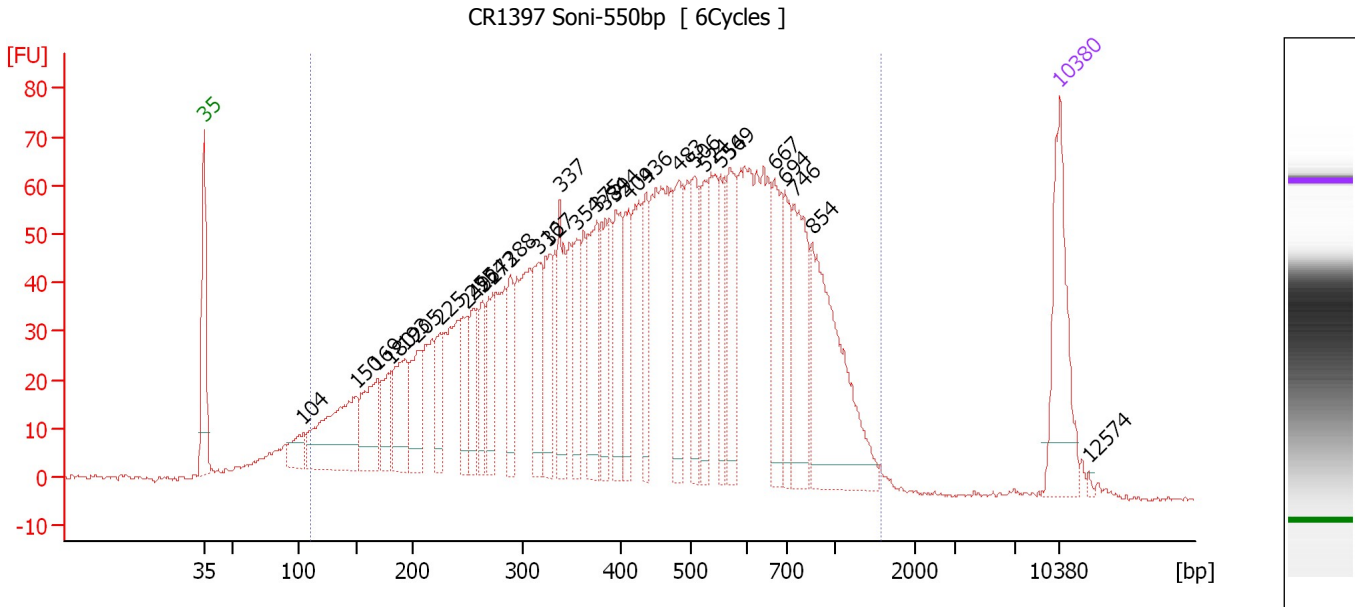
... Region table for sample 3 : CTSC3 1:2

From [bp]	To [bp]	Average Size [bp]	Molarity [pmol/l]	Conc. [pg/μl]	Corr. Area	% of Total	Size distribution in CV [%]	Color
303	4,502	1,002	6,684.7	3,045.03	3,107.6	96	61.9	■

Assay Class: High Sensitivity DNA Assay  
 Data Path: C:\...ents and Settings\Bioanalyzer\2013-10-24\2013-10-24\_005.xad

Created: 10/24/2013 1:31:01 PM  
 Modified: 10/24/2013 2:08:49 PM

**Electropherogram Summary Continued ...**



**Overall Results for sample 4 : CR1397 Soni-550bp**

Number of peaks found: 31                      Corr. Area 1: 2,744.3  
 Noise: 0.5

**Peak table for sample 4 : CR1397 Soni-550bp**

Peak	Size [bp]	Conc. [pg/μl]	Molarity [pmol/l]	Observations
1	35	125.00	5,411.3	Lower Marker
2	104	28.91	422.4	
3	150	134.25	1,355.2	
4	169	75.84	681.8	
5	180	40.81	342.8	
6	193	70.41	552.3	
7	205	58.83	435.7	
8	225	40.97	276.3	
9	249	46.80	284.6	
10	255	51.17	304.1	
11	264	42.84	246.3	
12	273	53.06	294.8	
13	288	42.98	226.1	
14	316	63.83	306.3	
15	327	60.68	281.4	
16	337	68.21	306.7	
17	354	47.95	205.0	
18	375	79.07	319.5	
19	384	48.39	191.1	
20	394	66.37	255.2	
21	409	55.10	203.9	
22	436	49.90	173.2	
23	483	65.32	205.0	
24	506	61.26	183.3	
25	524	52.21	151.0	
26	554	47.35	129.5	

Assay Class: High Sensitivity DNA Assay  
 Data Path: C:\...ents and Settings\Bioanalyzer\2013-10-24\2013-10-24\_005.xad

Created: 10/24/2013 1:31:01 PM  
 Modified: 10/24/2013 2:08:49 PM

### Electropherogram Summary Continued ...

#### ... Peak table for sample 4 : CR1397 Soni-550bp

Peak	Size [bp]	Conc. [pg/μl]	Molarity [pmol/l]	Observations
27	569	70.66	188.3	
28	667	62.18	141.2	
29	694	50.82	110.9	
30	746	92.08	187.1	
31	854	159.03	282.0	
32	10,380	75.00	10.9	Upper Marker
33	12,574	0.00	0.0	

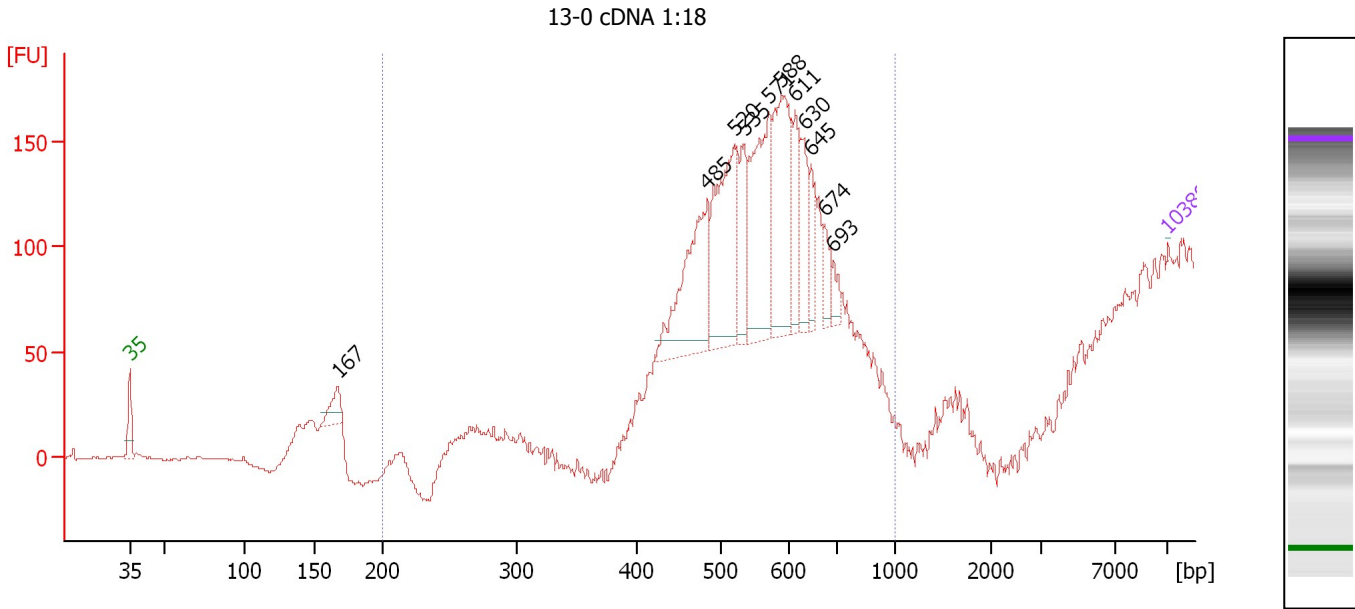
#### Region table for sample 4 : CR1397 Soni-550bp

From [bp]	To [bp]	Average Size [bp]	Molarity [pmol/l]	Conc. [pg/μl]	Corr. Area	% of Total	Size distribution in CV [%]	Color
110	1,566	475	14,435.2	3,088.26	2,744.3	96	49.4	

Assay Class: High Sensitivity DNA Assay  
 Data Path: C:\...ents and Settings\Bioanalyzer\2013-10-24\2013-10-24\_005.xad

Created: 10/24/2013 1:31:01 PM  
 Modified: 10/24/2013 2:08:49 PM

**Electropherogram Summary Continued ...**



**Overall Results for sample 5 : 13-0 cDNA 1:18**

Number of peaks found: 11                      Corr. Area 1: 1,156.4  
 Noise: 0.4

**Peak table for sample 5 : 13-0 cDNA 1:18**

Peak	Size [bp]	Conc. [pg/μl]	Molarity [pmol/l]	Observations
1	35	125.00	5,411.3	Lower Marker
2	167	3,624.99	32,817.2	
3	485	17,114.14	53,462.1	
4	520	18,436.44	53,686.3	
5	535	6,049.45	17,136.6	
6	571	17,234.11	45,742.2	
7	588	15,677.46	40,365.2	
8	611	5,563.24	13,791.9	
9	630	5,231.20	12,575.9	
10	645	3,785.81	8,895.1	
11	674	2,752.99	6,188.2	
12	693	1,554.51	3,398.0	
13	10,380	75.00	10.9	Upper Marker

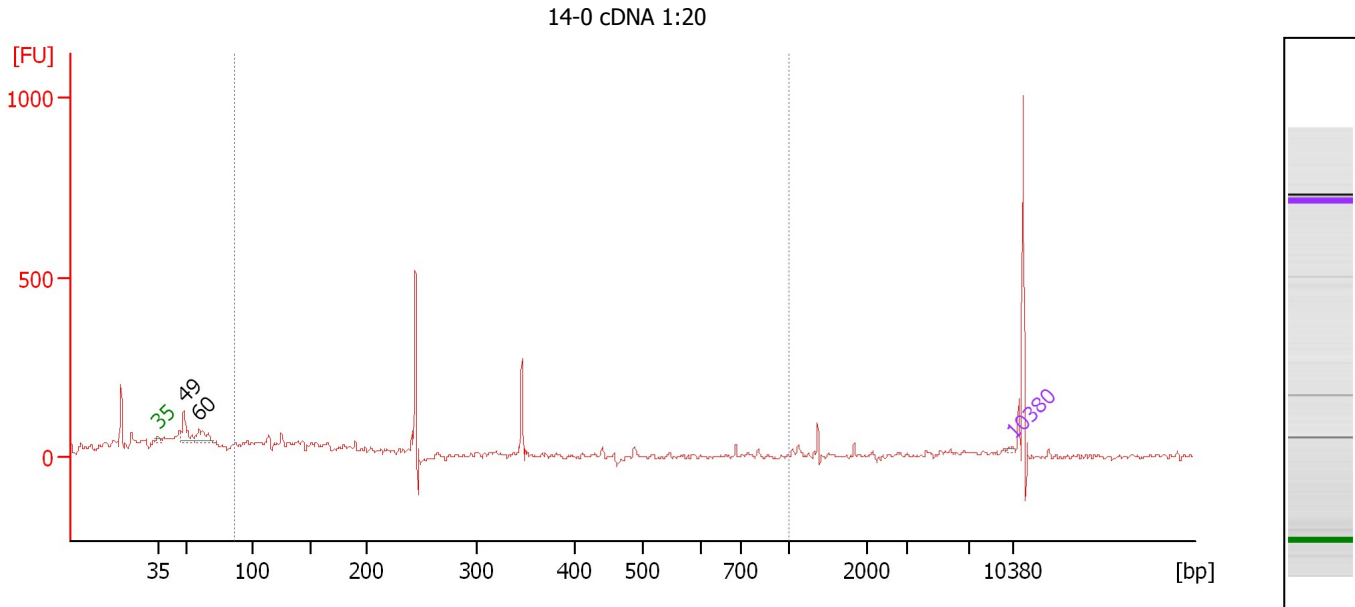
**Region table for sample 5 : 13-0 cDNA 1:18**

From [bp]	To [bp]	Average Size [bp]	Molarity [pmol/l]	Conc. [pg/μl]	Corr. Area	% of Total	Size distribution in CV [%]	Color
200	1,000	560	248,468.9	90,255.38	1,156.4	99	11.3	Blue

Assay Class: High Sensitivity DNA Assay  
 Data Path: C:\...ents and Settings\Bioanalyzer\2013-10-24\2013-10-24\_005.xad

Created: 10/24/2013 1:31:01 PM  
 Modified: 10/24/2013 2:08:49 PM

**Electropherogram Summary Continued ...**



**Overall Results for sample 6 : 14-0 cDNA 1:20**

Number of peaks found: 2                      Corr. Area 1: 462.0  
 Noise: 7.4

**Peak table for sample 6 : 14-0 cDNA 1:20**

Peak	Size [bp]	Conc. [pg/μl]	Molarity [pmol/l]	Observations
1	35	125.00	5,411.3	Lower Marker
2	49	1,362.75	42,501.0	
3	60	1,228.70	31,264.8	
4	10,380	75.00	10.9	Upper Marker

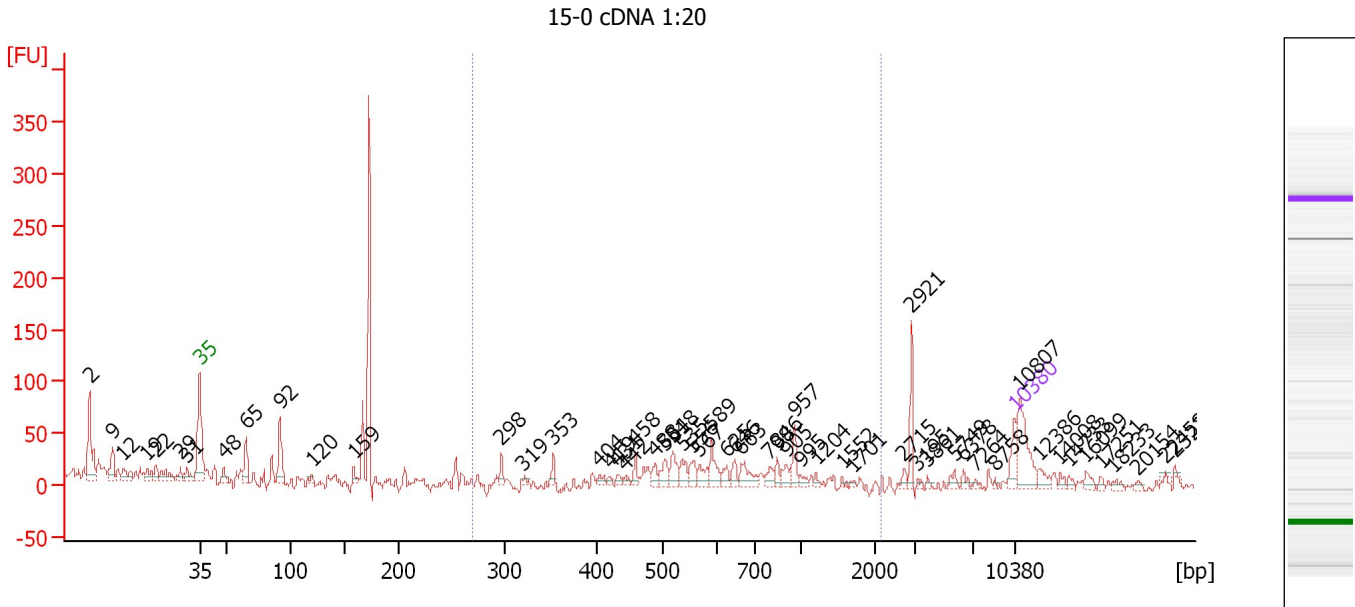
**Region table for sample 6 : 14-0 cDNA 1:20**

From [bp]	To [bp]	Average Size [bp]	Molarity [pmol/l]	Conc. [pg/μl]	Corr. Area	% of Total	Size distribution in CV [%]	Color
86	1,000	228	49,751.2	5,472.95	462.0	34	47.9	Blue

Assay Class: High Sensitivity DNA Assay  
 Data Path: C:\...ents and Settings\Bioanalyzer\2013-10-24\2013-10-24\_005.xad

Created: 10/24/2013 1:31:01 PM  
 Modified: 10/24/2013 2:08:49 PM

**Electropherogram Summary Continued ...**



**Overall Results for sample 7 : 15-0 cDNA 1:20**

Number of peaks found: 56                      Corr. Area 1: 230.4  
 Noise: 6.8

**Peak table for sample 7 : 15-0 cDNA 1:20**


Peak	Size [bp]	Conc. [pg/μl]	Molarity [pmol/l]	Observations
1	2	0.00	0.0	
2	9	0.00	0.0	
3	12	0.00	0.0	
4	19	0.00	0.0	
5	22	0.00	0.0	
6	29	0.00	0.0	
7	31	0.00	0.0	
8	35	125.00	5,411.3	Lower Marker
9	48	54.66	1,710.4	
10	65	144.12	3,339.8	
11	92	206.14	3,402.4	
12	120	26.51	335.0	
13	159	39.67	378.3	
14	298	43.48	221.1	
15	319	19.57	92.9	
16	353	39.74	170.6	
17	404	27.05	101.5	
18	419	15.82	57.2	
19	431	22.47	79.1	
20	442	18.65	63.9	
21	458	43.50	143.8	
22	488	42.40	131.8	
23	504	64.04	192.7	
24	518	78.61	229.9	
25	535	58.85	166.7	
26	556	58.51	159.4	

Assay Class: High Sensitivity DNA Assay  
 Data Path: C:\...ents and Settings\Bioanalyzer\2013-10-24\2013-10-24\_005.xad


Created: 10/24/2013 1:31:01 PM  
 Modified: 10/24/2013 2:08:49 PM

**Electropherogram Summary Continued ...**

**... Peak table for sample 7 : 15-0 cDNA 1:20**

Peak	Size [bp]	Conc. [pg/μl]	Molarity [pmol/l]	Observations
27	567	54.22	144.9	
28	589	89.97	231.3	
29	625	38.11	92.4	
30	646	42.57	99.8	
31	663	85.42	195.2	
32	798	40.62	77.1	
33	846	34.67	62.1	
34	905	44.42	74.3	
35	957	66.17	104.7	
36	995	22.36	34.0	
37	1,204	15.36	19.3	
38	1,552	9.54	9.3	
39	1,701	7.91	7.0	
40	2,715	19.21	10.7	
41	2,921	100.07	51.9	
42	3,195	8.53	4.0	
43	3,861	9.19	3.6	
44	5,749	22.86	6.0	
45	6,378	20.09	4.8	
46	7,264	7.09	1.5	
47	8,758	6.87	1.2	
48	 10,380	75.00	10.9	Upper Marker
49	10,807	0.00	0.0	
50	12,386	0.00	0.0	
51	14,008	0.00	0.0	
52	14,733	0.00	0.0	
53	16,099	0.00	0.0	
54	17,251	0.00	0.0	
55	18,233	0.00	0.0	
56	20,154	0.00	0.0	
57	22,458	0.00	0.0	
58	23,226	0.00	0.0	

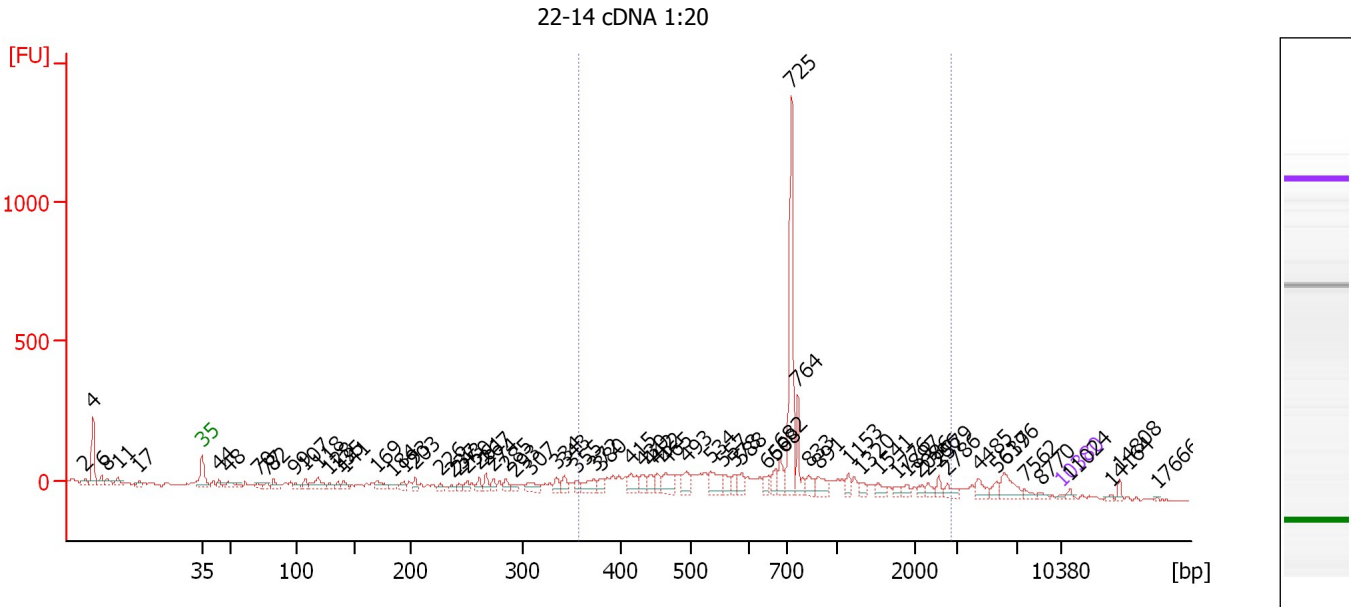
**Region table for sample 7 : 15-0 cDNA 1:20**

From [bp]	To [bp]	Average Size [bp]	Molarity [pmol/l]	Conc. [pg/μl]	Corr. Area	% of Total	Size distribution in CV [%]	Color
270	2,111	656	1,847.5	697.64	230.4	29	34.1	

Assay Class: High Sensitivity DNA Assay  
 Data Path: C:\...ents and Settings\Bioanalyzer\2013-10-24\2013-10-24\_005.xad

Created: 10/24/2013 1:31:01 PM  
 Modified: 10/24/2013 2:08:49 PM

**Electropherogram Summary Continued ...**



**Setpoint Deviations for sample 8 : 22-14 cDNA 1:20**

Height Threshold [FU] : 15

**Overall Results for sample 8 : 22-14 cDNA 1:20**

Number of peaks found: 71                      Corr. Area 1: 2,455.5  
 Noise: 8.1

**Peak table for sample 8 : 22-14 cDNA 1:20**

Peak	Size [bp]	Conc. [pg/μl]	Molarity [pmol/l]	Observations
1	2	0.00	0.0	
2	4	0.00	0.0	
3	6	0.00	0.0	
4	8	0.00	0.0	
5	11	0.00	0.0	
6	17	0.00	0.0	
7	35	125.00	5,411.3	Lower Marker
8	44	355.32	12,314.7	
9	48	746.42	23,319.3	
10	70	280.80	6,041.0	
11	77	241.24	4,737.6	
12	82	489.65	9,058.9	
13	99	345.84	5,319.6	
14	107	408.57	5,807.0	
15	118	1,041.39	13,347.7	
16	128	282.36	3,343.2	
17	135	338.88	3,792.2	
18	141	397.72	4,274.8	
19	169	657.81	5,881.0	
20	184	340.02	2,807.0	
21	193	403.36	3,160.4	
22	203	382.09	2,848.2	




Assay Class: High Sensitivity DNA Assay  
 Data Path: C:\...ents and Settings\Bioanalyzer\2013-10-24\2013-10-24\_005.xad

Created: 10/24/2013 1:31:01 PM  
 Modified: 10/24/2013 2:08:49 PM

**Electropherogram Summary Continued ...**

**... Peak table for sample 8 : 22-14 cDNA 1:20**

Peak	Size [bp]	Conc. [pg/µl]	Molarity [pmol/l]	Observations
23	226	256.62	1,719.8	
24	237	193.58	1,240.0	
25	243	244.15	1,524.1	
26	250	356.57	2,162.4	
27	261	374.65	2,176.8	
28	267	482.31	2,732.6	
29	274	371.84	2,059.2	
30	285	403.86	2,147.0	
31	293	306.04	1,582.1	
32	307	662.83	3,268.6	
33	334	413.12	1,873.1	
34	343	513.66	2,270.4	
35	355	330.36	1,409.3	
36	372	842.72	3,428.6	
37	380	397.91	1,586.8	
38	415	822.30	3,001.1	
39	430	523.24	1,841.6	
40	442	525.96	1,803.0	
41	452	540.14	1,810.8	
42	465	999.45	3,256.6	
43	493	780.45	2,396.7	
44	534	1,034.76	2,933.9	
45	557	524.00	1,424.4	
46	578	509.52	1,336.5	
47	588	490.52	1,264.5	
48	650	418.16	975.4	
49	668	524.36	1,188.5	
50	682	785.76	1,745.8	
51	725	5,605.49	11,716.4	
52	764	1,194.85	2,369.4	
53	833	523.60	952.8	
54	891	664.81	1,130.0	
55	1,153	373.50	491.0	
56	1,320	312.34	358.5	
57	1,541	368.07	361.8	
58	1,776	193.04	164.7	
59	1,897	271.22	216.7	
60	2,086	206.67	150.1	
61	2,306	271.61	178.4	
62	2,579	275.76	162.0	
63	2,786	376.53	204.7	
64	4,485	466.40	157.6	
65	5,637	291.34	78.3	
66	6,196	860.02	210.3	
67	7,562	215.44	43.2	
68	8,770	136.51	23.6	
69	 10,380	75.00	10.9	Upper Marker
70	11,024	0.00	0.0	
71	14,164	0.00	0.0	
72	14,808	0.00	0.0	
73	17,666	0.00	0.0	

Assay Class: High Sensitivity DNA Assay  
Data Path: C:\...ents and Settings\Bioanalyzer\2013-10-24\2013-10-24\_005.xad

Created: 10/24/2013 1:31:01 PM  
Modified: 10/24/2013 2:08:49 PM

**Electropherogram Summary Continued ...**

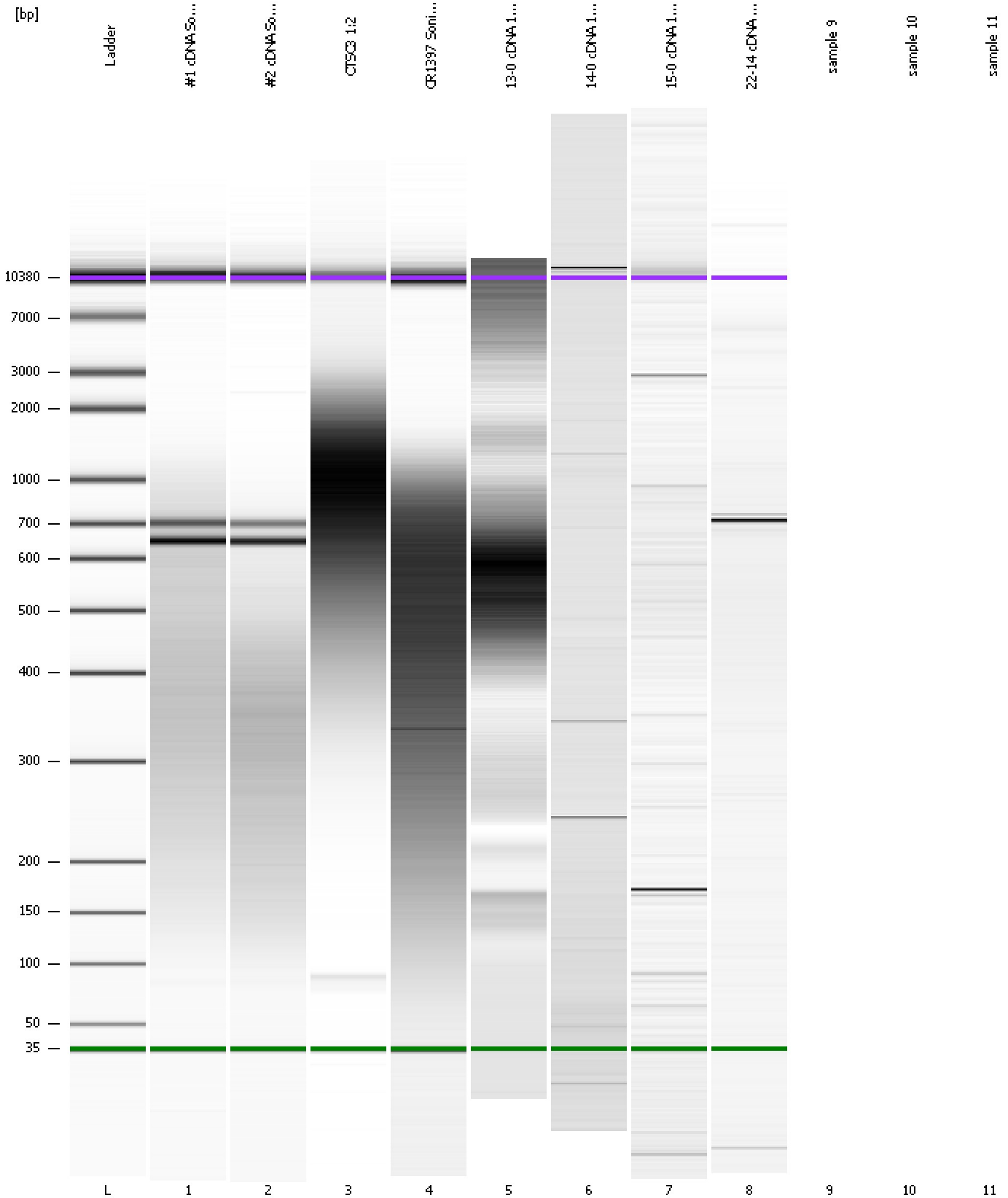
... Region table for sample 8 : 22-14 cDNA 1:20

From [bp]	To [bp]	Average Size [bp]	Molarity [pmol/l]	Conc. [pg/μl]	Corr. Area	% of Total	Size distribution in CV [%]	Color
357	2,877	821	56,249.7	23,231.26	2,455.5	68	61.1	■

Assay Class: High Sensitivity DNA Assay  
Data Path: C:\...ents and Settings\Bioanalyzer\2013-10-24\2013-10-24\_005.xad

Created: 10/24/2013 1:31:01 PM  
Modified: 10/24/2013 2:08:49 PM

**Gel Image**



Assay Class: High Sensitivity DNA Assay  
Data Path: C:\...ents and Settings\Bioanalyzer\2013-10-24\2013-10-24\_005.xad

Created: 10/24/2013 1:31:01 PM  
Modified: 10/24/2013 2:08:49 PM

**Invalid Samples**

Sample 9 has not been run, no results available.

Sample 10 has not been run, no results available.

Sample 11 has not been run, no results available.