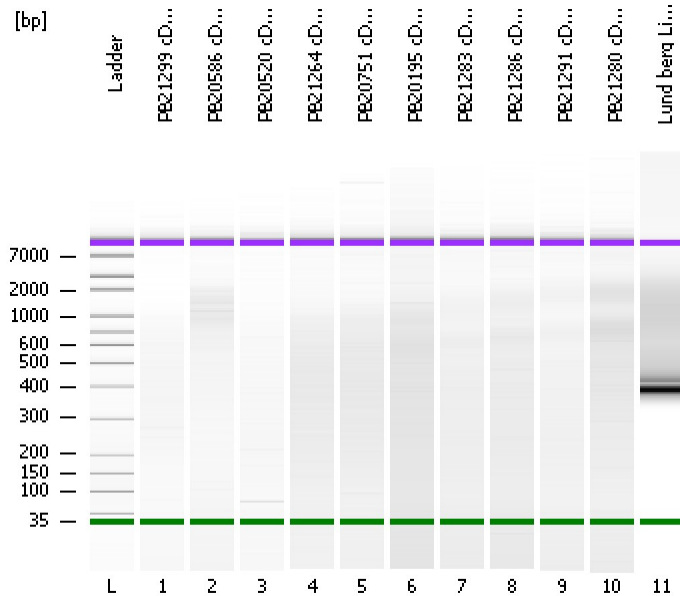


Assay Class: High Sensitivity DNA Assay
Data Path: C:\...ents and Settings\Bioanalyzer\2013-10-24\2013-10-24_006.xad

Created: 10/24/2013 5:59:41 PM
Modified: 10/24/2013 6:41:50 PM

Electrophoresis File Run Summary



Instrument Information:

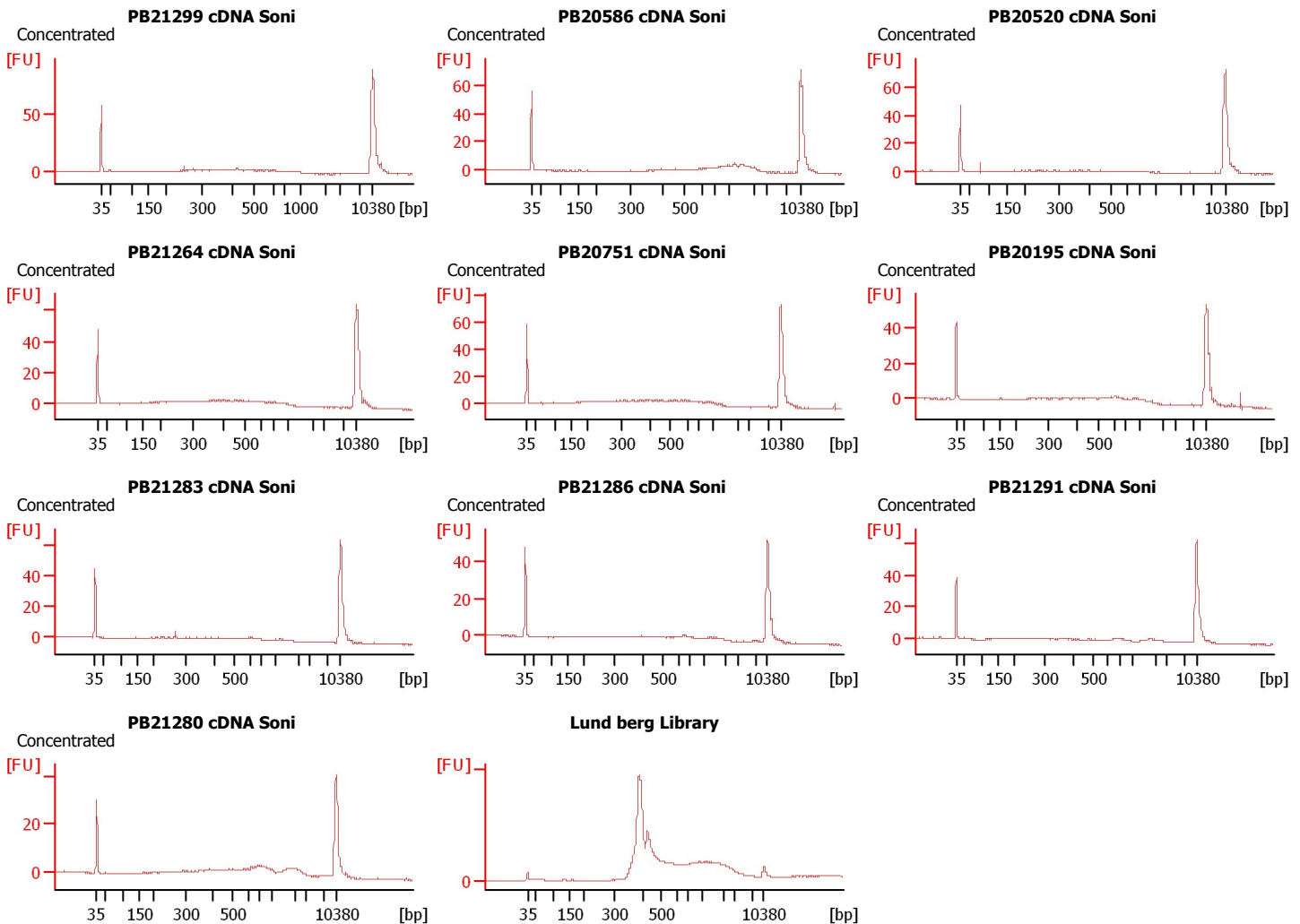
Instrument Name: DE13701086 Firmware: C.01.069
Serial#: DE13701086 Type: G2938B

Assay Information:

Assay Origin Path: C:\Program Files\Agilent\2100 bioanalyzer\2100 expert\assays\dsDNA\High Sensitivity DNA.xsy
Assay Class: High Sensitivity DNA Assay
Version: 1.03
Assay Comments: Copyright © 2003-2010 Agilent Technologies

Chip Information:

Chip Lot #:
Reagent Kit Lot #:
Chip Comments:



Assay Class: High Sensitivity DNA Assay
 Data Path: C:\...ents and Settings\Bioanalyzer\2013-10-24\2013-10-24_006.xad

Created: 10/24/2013 5:59:41 PM
 Modified: 10/24/2013 6:41:50 PM

Electrophoresis File Run Summary (Chip Summary)

Sample Name	Sample Comment	Rest. Digest	Status	Observation	Result Label	Result Color
PB21299 cDNA Soni	Concentrated	<input type="checkbox"/>	✓			
PB20586 cDNA Soni	Concentrated	<input type="checkbox"/>	✓			
PB20520 cDNA Soni	Concentrated	<input type="checkbox"/>	✓			
PB21264 cDNA Soni	Concentrated	<input type="checkbox"/>	✓			
PB20751 cDNA Soni	Concentrated	<input type="checkbox"/>	✓			
PB20195 cDNA Soni	Concentrated	<input type="checkbox"/>	✓			
PB21283 cDNA Soni	Concentrated	<input type="checkbox"/>	✓			
PB21286 cDNA Soni	Concentrated	<input type="checkbox"/>	✓			
PB21291 cDNA Soni	Concentrated	<input type="checkbox"/>	✓			
PB21280 cDNA Soni	Concentrated	<input type="checkbox"/>	✓			
Lund berg Library		<input type="checkbox"/>	✓			
Ladder		<input type="checkbox"/>	✓			

Chip Lot #

Reagent Kit Lot #

Chip Comments :

Assay Class: High Sensitivity DNA Assay
Data Path: C:\...ents and Settings\Bioanalyzer\2013-10-24\2013-10-24_006.xad

Created: 10/24/2013 5:59:41 PM
Modified: 10/24/2013 6:41:50 PM

Electrophoresis Assay Details

General Analysis Settings

Number of Available Sample and Ladder Wells (Max.) : 12
Minimum Visible Range [s] : 32
Maximum Visible Range [s] : 138
Start Analysis Time Range [s] : 33
End Analysis Time Range [s] : 137.5
Ladder Concentration [pg/μl] : 1950
Uses Standard Area for Ladder Fragments
Lower Marker Concentration [pg/μl] : 125
Upper Marker Concentration [pg/μl] : 75
Used Upper Marker for Quantitation
Standard Curve Fit is Point to Point
Show Data Aligned to Lower and Upper Marker

Integrator Settings

Integration Start Time [s] : 33.05
Integration End Time [s] : 137
Slope Threshold : 0.8
Height Threshold [FU] : 5
Area Threshold : 0.1
Width Threshold [s] : 0.6
Baseline Plateau [s] : 0.5

Filter Settings

Filter Width [s] : 0.5
Polynomial Order : 4

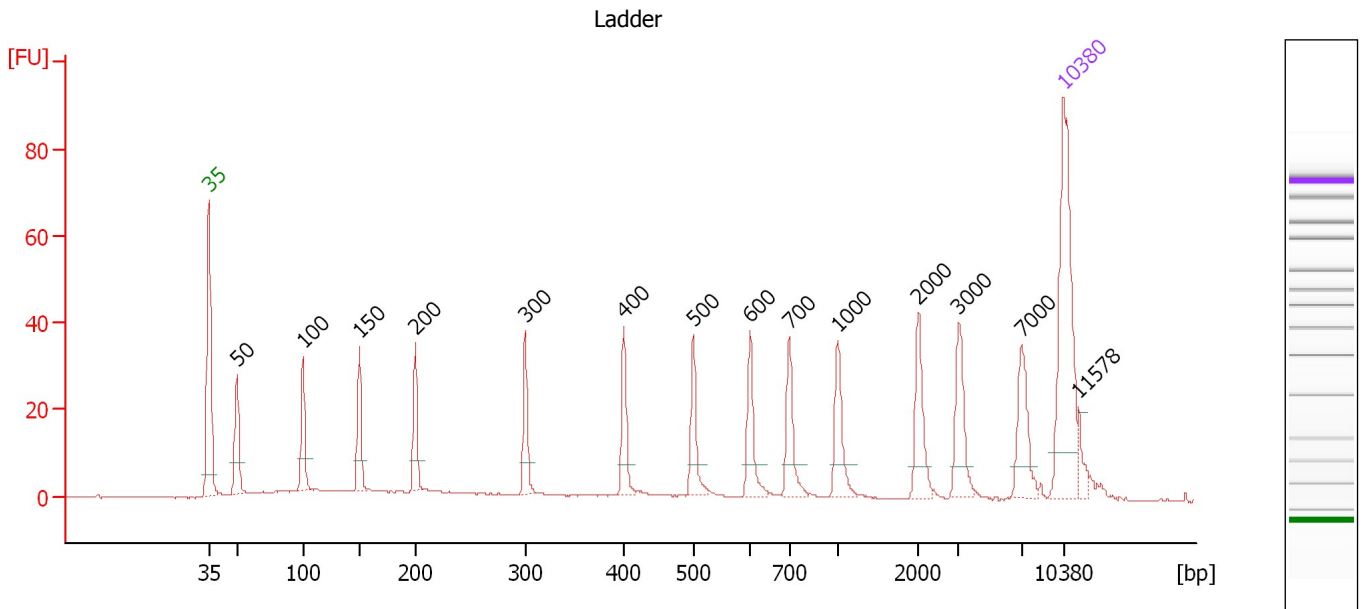
Ladder

Ladder Peak	Size	Area
1	35	160
2	50	210
3	100	208
4	150	221
5	200	242
6	300	270
7	400	305
8	500	306
9	600	336
10	700	321
11	1000	366
12	2000	413
13	3000	411
14	7000	400
15	10380	214

Assay Class: High Sensitivity DNA Assay
 Data Path: C:\...ents and Settings\Bioanalyzer\2013-10-24\2013-10-24_006.xad

Created: 10/24/2013 5:59:41 PM
 Modified: 10/24/2013 6:41:50 PM

Electropherogram Summary



Overall Results for Ladder

Noise: 0.2

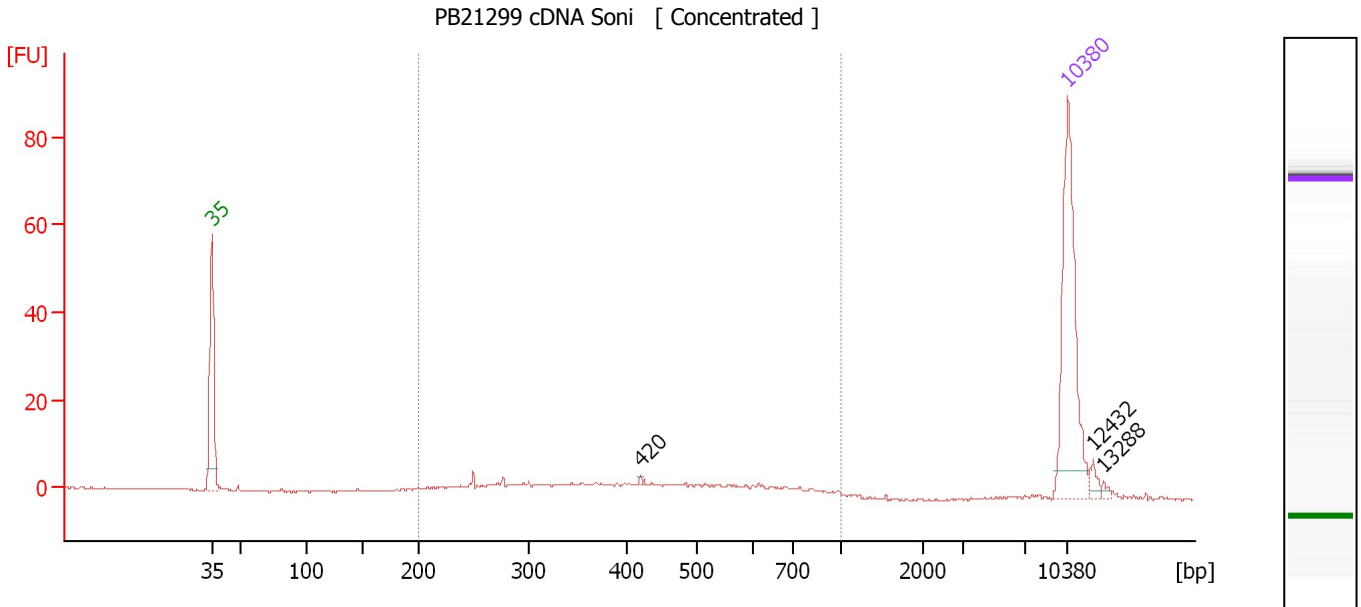
Peak table for Ladder

Peak	Size [bp]	Conc. [pg/μl]	Molarity [pmol/l]	Observations
1	35	125.00	5,411.3	Lower Marker
2	50	150.00	4,545.5	Ladder Peak
3	100	150.00	2,272.7	Ladder Peak
4	150	150.00	1,515.2	Ladder Peak
5	200	150.00	1,136.4	Ladder Peak
6	300	150.00	757.6	Ladder Peak
7	400	150.00	568.2	Ladder Peak
8	500	150.00	454.5	Ladder Peak
9	600	150.00	378.8	Ladder Peak
10	700	150.00	324.7	Ladder Peak
11	1,000	150.00	227.3	Ladder Peak
12	2,000	150.00	113.6	Ladder Peak
13	3,000	150.00	75.8	Ladder Peak
14	7,000	150.00	32.5	Ladder Peak
15	10,380	75.00	10.9	Upper Marker
16	11,578	0.00	0.0	

Assay Class: High Sensitivity DNA Assay
 Data Path: C:\...ents and Settings\Bioanalyzer\2013-10-24\2013-10-24_006.xad

Created: 10/24/2013 5:59:41 PM
 Modified: 10/24/2013 6:41:50 PM

Electropherogram Summary Continued ...



Setpoint Deviations for sample 1 : PB21299 cDNA Soni

Height Threshold [FU] : 2

Overall Results for sample 1 : PB21299 cDNA Soni

Number of peaks found: 3 Corr. Area 1: 85.3
 Noise: 0.1

Peak table for sample 1 : PB21299 cDNA Soni

Peak	Size [bp]	Conc. [pg/µl]	Molarity [pmol/l]	Observations
1	35	125.00	5,411.3	Lower Marker
2	420	0.87	3.1	
3	10,380	75.00	10.9	Upper Marker
4	12,432	0.00	0.0	
5	13,288	0.00	0.0	

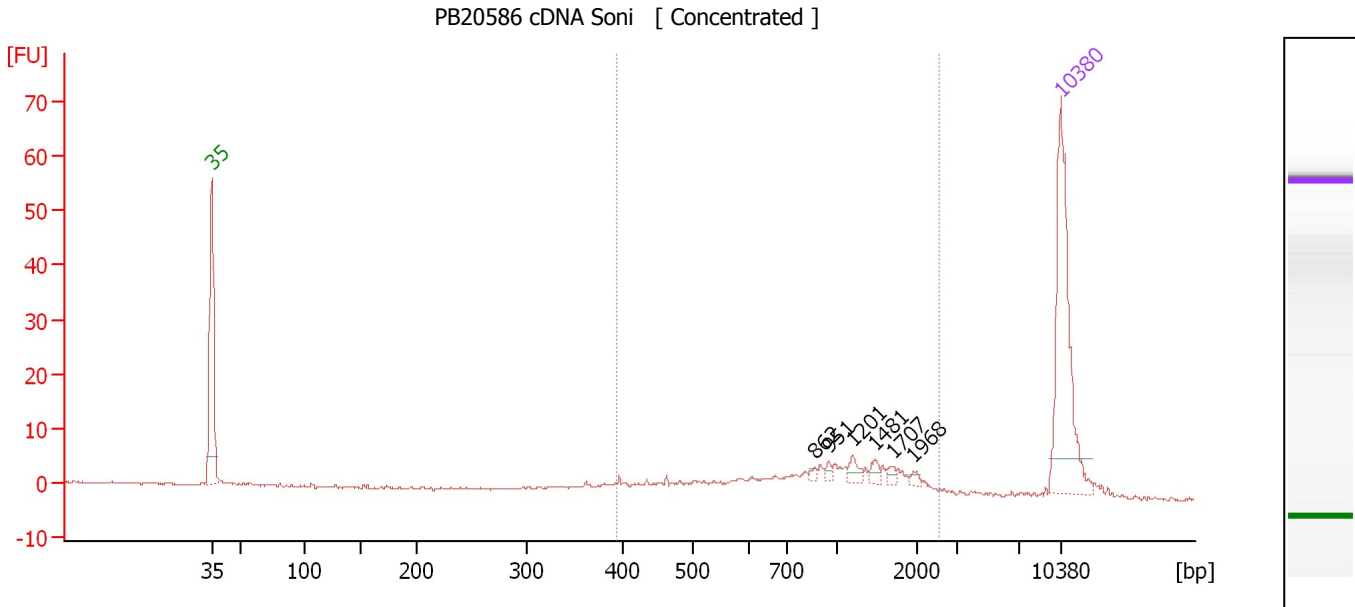
Region table for sample 1 : PB21299 cDNA Soni

From [bp]	To [bp]	Average Size [bp]	Molarity [pmol/l]	Conc. [pg/µl]	Corr. Area	% of Total	Size distribution in CV [%]	Color
200	1,000	446	388.7	94.30	85.3	86	37.7	Blue

Assay Class: High Sensitivity DNA Assay
 Data Path: C:\...ents and Settings\Bioanalyzer\2013-10-24\2013-10-24_006.xad

Created: 10/24/2013 5:59:41 PM
 Modified: 10/24/2013 6:41:50 PM

Electropherogram Summary Continued ...



Setpoint Deviations for sample 2 : PB20586 cDNA Soni

Height Threshold [FU] : 2

Overall Results for sample 2 : PB20586 cDNA Soni

Number of peaks found: 6 Corr. Area 1: 89.5
 Noise: 0.1

Peak table for sample 2 : PB20586 cDNA Soni

Peak	Size [bp]	Conc. [pg/μl]	Molarity [pmol/l]	Observations
1	35	125.00	5,411.3	Lower Marker
2	862	1.83	3.2	
3	951	2.16	3.4	
4	1,201	5.08	6.4	
5	1,481	3.85	3.9	
6	1,707	2.94	2.6	
7	1,968	2.06	1.6	
8	10,380	75.00	10.9	Upper Marker

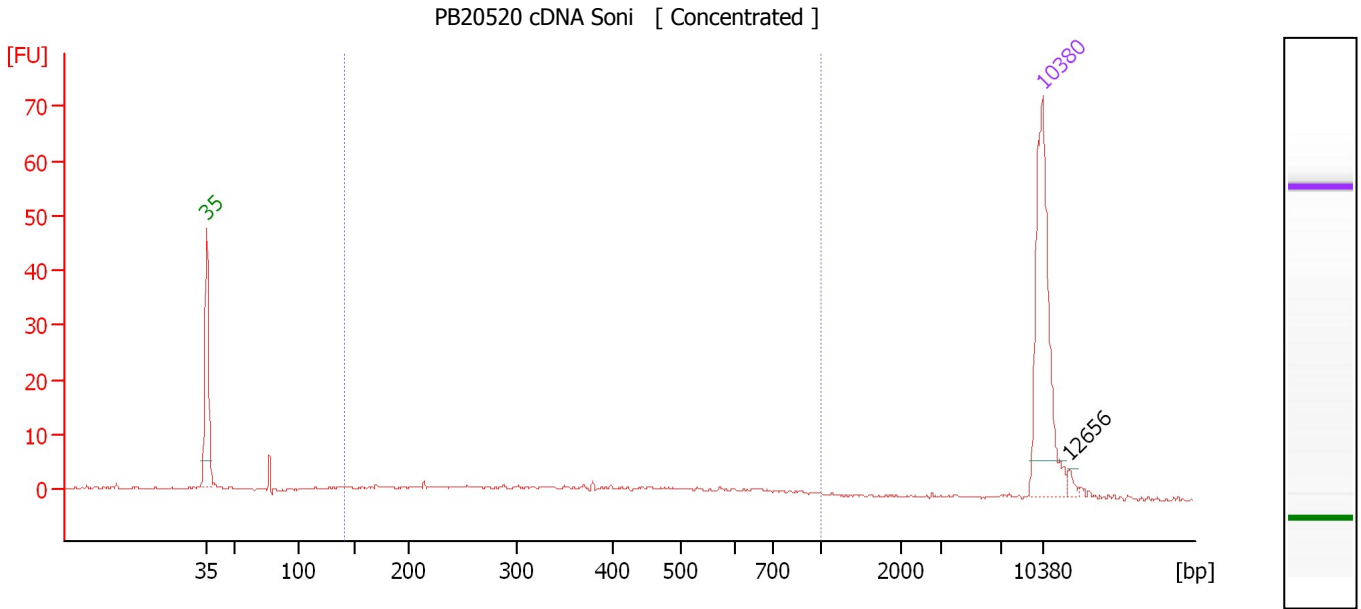
Region table for sample 2 : PB20586 cDNA Soni

From [bp]	To [bp]	Average Size [bp]	Molarity [pmol/l]	Conc. [pg/μl]	Corr. Area	% of Total	Size distribution in CV [%]	Color
393	2,564	1,070	199.7	104.36	89.5	85	48.2	Blue

Assay Class: High Sensitivity DNA Assay
 Data Path: C:\...ents and Settings\Bioanalyzer\2013-10-24\2013-10-24_006.xad

Created: 10/24/2013 5:59:41 PM
 Modified: 10/24/2013 6:41:50 PM

Electropherogram Summary Continued ...



Overall Results for sample 3 : PB20520 cDNA Soni

Number of peaks found: 1 Corr. Area 1: 61.4
 Noise: 0.2

Peak table for sample 3 : PB20520 cDNA Soni

Peak	Size [bp]	Conc. [pg/μl]	Molarity [pmol/l]	Observations
1	35	125.00	5,411.3	Lower Marker
2	10,380	75.00	10.9	Upper Marker
3	12,656	0.00	0.0	

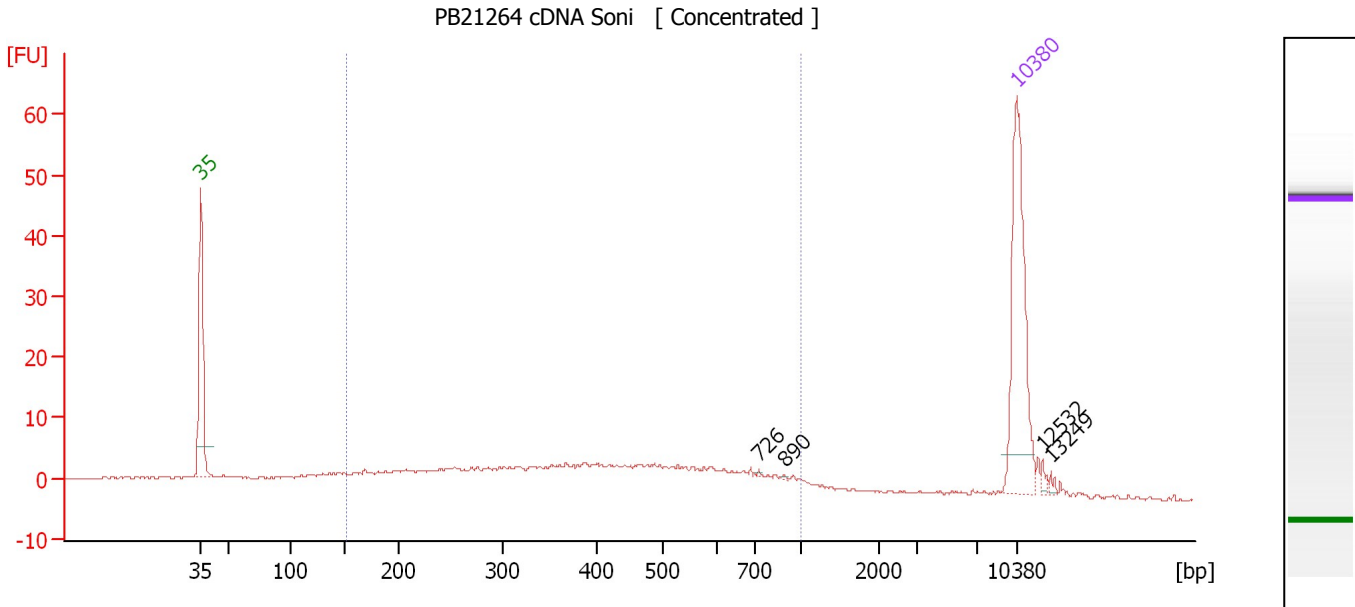
Region table for sample 3 : PB20520 cDNA Soni

From [bp]	To [bp]	Average Size [bp]	Molarity [pmol/l]	Conc. [pg/μl]	Corr. Area	% of Total	Size distribution in CV [%]	Color
141	1,000	409	436.0	85.83	61.4	64	45.6	Blue

Assay Class: High Sensitivity DNA Assay
 Data Path: C:\...ents and Settings\Bioanalyzer\2013-10-24\2013-10-24_006.xad

Created: 10/24/2013 5:59:41 PM
 Modified: 10/24/2013 6:41:50 PM

Electropherogram Summary Continued ...



Setpoint Deviations for sample 4 : PB21264 cDNA Soni

Height Threshold [FU] : 0.5

Overall Results for sample 4 : PB21264 cDNA Soni

Number of peaks found: 4 Corr. Area 1: 167.6
 Noise: 0.2

Peak table for sample 4 : PB21264 cDNA Soni

Peak	Size [bp]	Conc. [pg/μl]	Molarity [pmol/l]	Observations
1	35	125.00	5,411.3	Lower Marker
2	726	0.32	0.7	
3	890	0.45	0.8	
4	10,380	75.00	10.9	Upper Marker
5	12,532	0.00	0.0	
6	13,249	0.00	0.0	

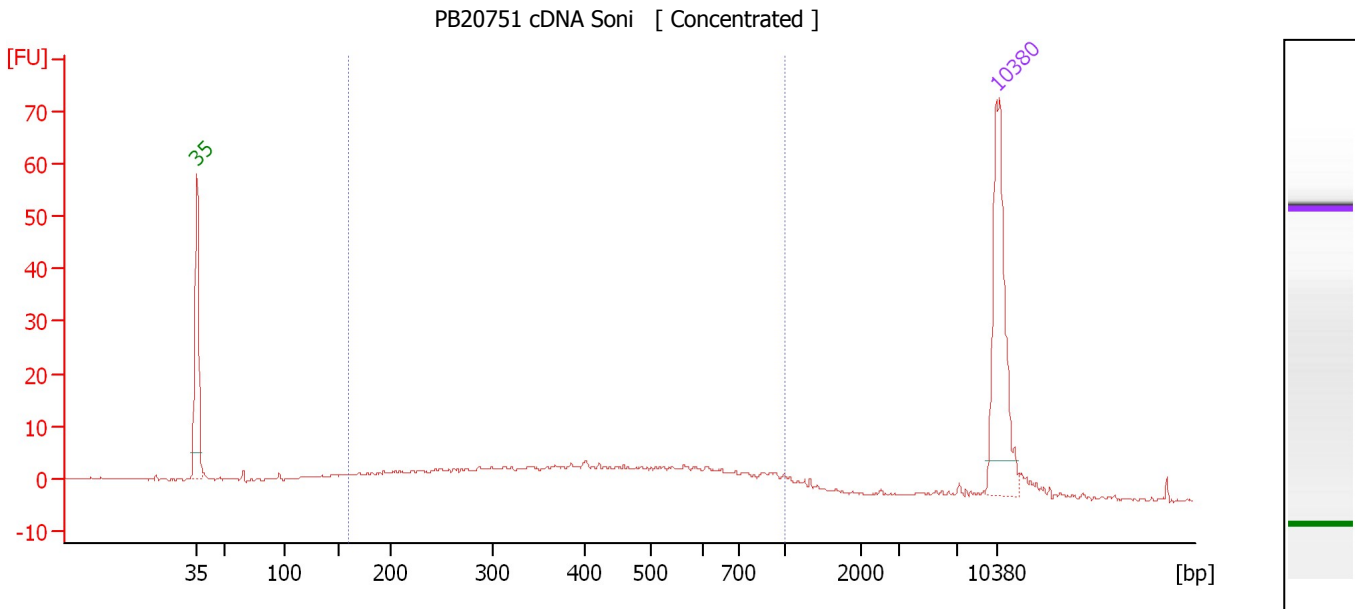
Region table for sample 4 : PB21264 cDNA Soni

From [bp]	To [bp]	Average Size [bp]	Molarity [pmol/l]	Conc. [pg/μl]	Corr. Area	% of Total	Size distribution in CV [%]	Color
153	1,000	434	1,175.8	254.30	167.6	74	42.8	Blue

Assay Class: High Sensitivity DNA Assay
Data Path: C:\...ents and Settings\Bioanalyzer\2013-10-24\2013-10-24_006.xad

Created: 10/24/2013 5:59:41 PM
Modified: 10/24/2013 6:41:50 PM

Electropherogram Summary Continued ...



Overall Results for sample 5 : PB20751 cDNA Soni

Number of peaks found: 0 Corr. Area 1: 172.2
Noise: 0.2

Peak table for sample 5 : PB20751 cDNA Soni

Peak	Size [bp]	Conc. [pg/μl]	Molarity [pmol/l]	Observations
1	35	125.00	5,411.3	Lower Marker
2	10,380	75.00	10.9	Upper Marker

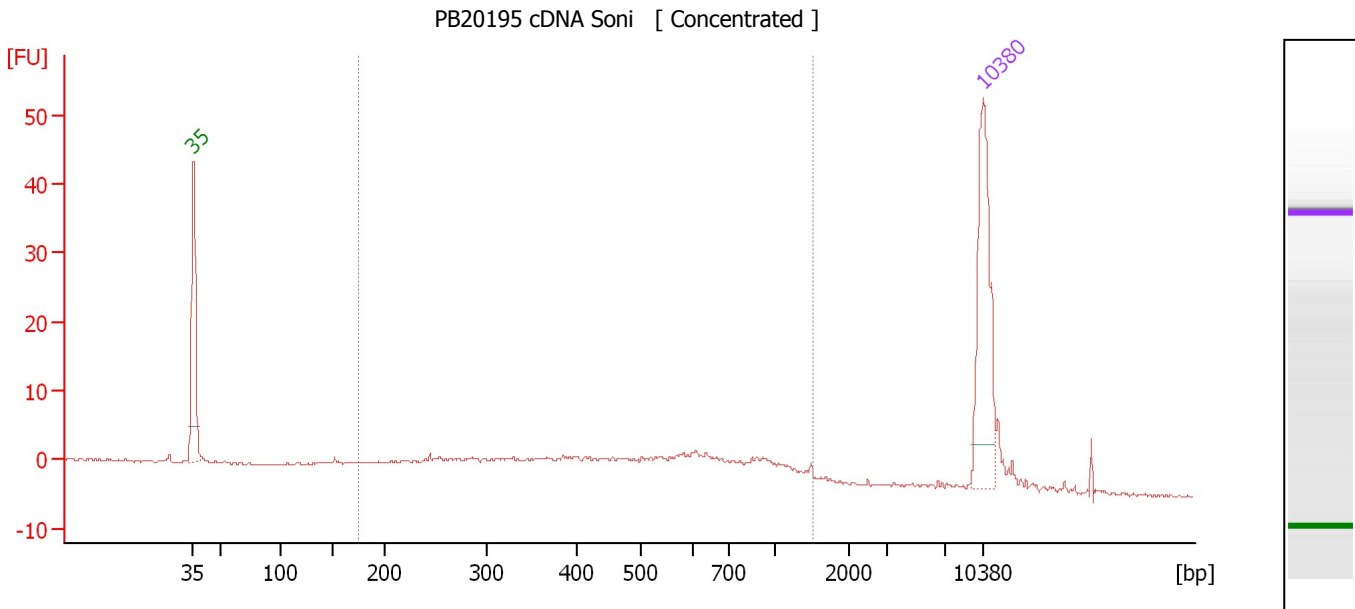
Region table for sample 5 : PB20751 cDNA Soni

From [bp]	To [bp]	Average Size [bp]	Molarity [pmol/l]	Conc. [pg/μl]	Corr. Area	% of Total	Size distribution in CV [%]	Color
159	1,000	446	1,024.8	229.27	172.2	83	42.5	Blue

Assay Class: High Sensitivity DNA Assay
 Data Path: C:\...ents and Settings\Bioanalyzer\2013-10-24\2013-10-24_006.xad

Created: 10/24/2013 5:59:41 PM
 Modified: 10/24/2013 6:41:50 PM

Electropherogram Summary Continued ...



Overall Results for sample 6 : PB20195 cDNA Soni

Number of peaks found: 0 Corr. Area 1: 120.1
 Noise: 0.2

Peak table for sample 6 : PB20195 cDNA Soni

Peak	Size [bp]	Conc. [pg/μl]	Molarity [pmol/l]	Observations
1	35	125.00	5,411.3	Lower Marker
2	10,380	75.00	10.9	Upper Marker

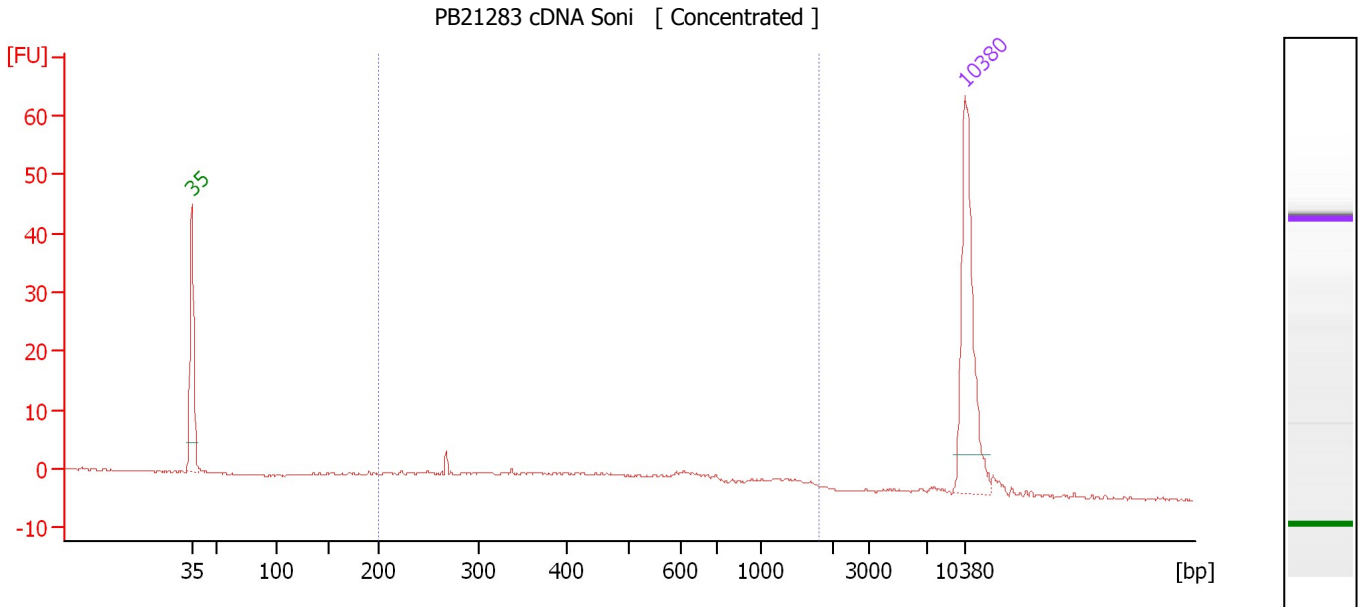
Region table for sample 6 : PB20195 cDNA Soni

From [bp]	To [bp]	Average Size [bp]	Molarity [pmol/l]	Conc. [pg/μl]	Corr. Area	% of Total	Size distribution in CV [%]	Color
175	1,504	545	780.7	201.11	120.1	80	50.9	Blue

Assay Class: High Sensitivity DNA Assay
 Data Path: C:\...ents and Settings\Bioanalyzer\2013-10-24\2013-10-24_006.xad

Created: 10/24/2013 5:59:41 PM
 Modified: 10/24/2013 6:41:50 PM

Electropherogram Summary Continued ...



Overall Results for sample 7 : PB21283 cDNA Soni

Number of peaks found: 0 Corr. Area 1: 71.6
 Noise: 0.2

Peak table for sample 7 : PB21283 cDNA Soni

Peak	Size [bp]	Conc. [pg/μl]	Molarity [pmol/l]	Observations
1	35	125.00	5,411.3	Lower Marker
2	10,380	75.00	10.9	Upper Marker

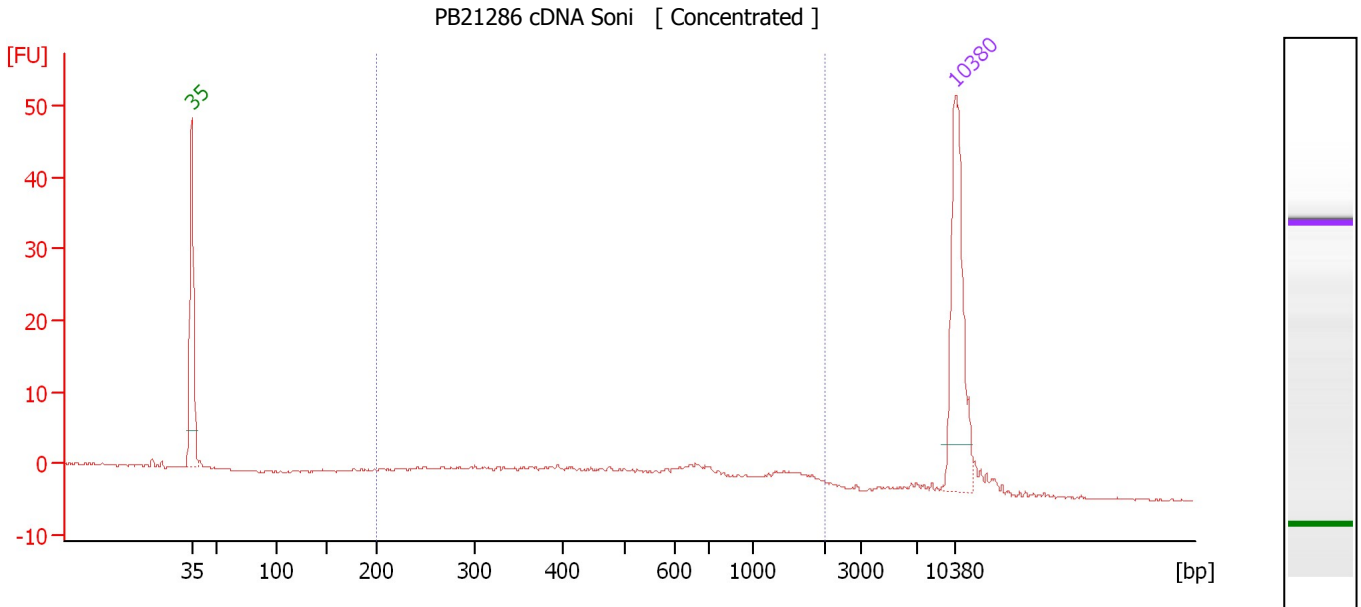
Region table for sample 7 : PB21283 cDNA Soni

From [bp]	To [bp]	Average Size [bp]	Molarity [pmol/l]	Conc. [pg/μl]	Corr. Area	% of Total	Size distribution in CV [%]	Color
200	1,799	583	401.4	106.01	71.6	80	61.0	Blue

Assay Class: High Sensitivity DNA Assay
 Data Path: C:\...ents and Settings\Bioanalyzer\2013-10-24\2013-10-24_006.xad

Created: 10/24/2013 5:59:41 PM
 Modified: 10/24/2013 6:41:50 PM

Electropherogram Summary Continued ...



Overall Results for sample 8 : PB21286 cDNA Soni

Number of peaks found: 0 Corr. Area 1: 76.6
 Noise: 0.1

Peak table for sample 8 : PB21286 cDNA Soni

Peak	Size [bp]	Conc. [pg/μl]	Molarity [pmol/l]	Observations
1	35	125.00	5,411.3	Lower Marker
2	10,380	75.00	10.9	Upper Marker

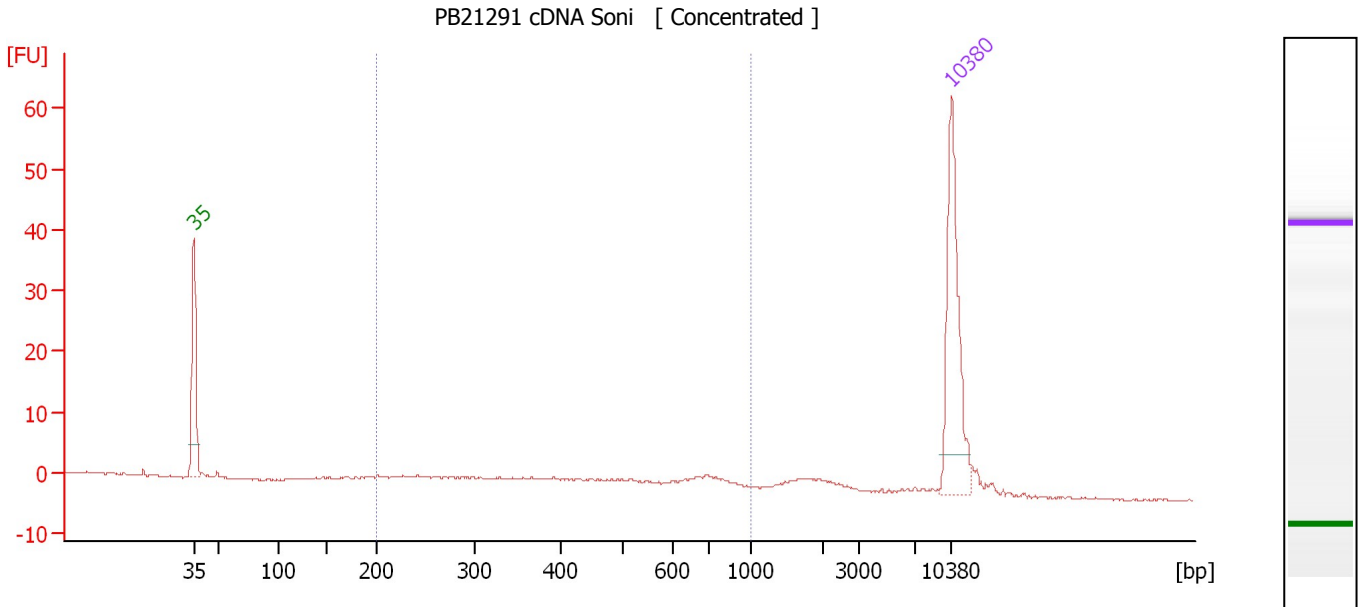
Region table for sample 8 : PB21286 cDNA Soni

From [bp]	To [bp]	Average Size [bp]	Molarity [pmol/l]	Conc. [pg/μl]	Corr. Area	% of Total	Size distribution in CV [%]	Color
200	1,998	671	444.9	127.05	76.6	82	65.1	Blue

Assay Class: High Sensitivity DNA Assay
 Data Path: C:\...ents and Settings\Bioanalyzer\2013-10-24\2013-10-24_006.xad

Created: 10/24/2013 5:59:41 PM
 Modified: 10/24/2013 6:41:50 PM

Electropherogram Summary Continued ...



Overall Results for sample 9 : PB21291 cDNA Soni

Number of peaks found: 0 Corr. Area 1: 44.8
 Noise: 0.2

Peak table for sample 9 : PB21291 cDNA Soni

Peak	Size [bp]	Conc. [pg/μl]	Molarity [pmol/l]	Observations
1	35	125.00	5,411.3	Lower Marker
2	10,380	75.00	10.9	Upper Marker

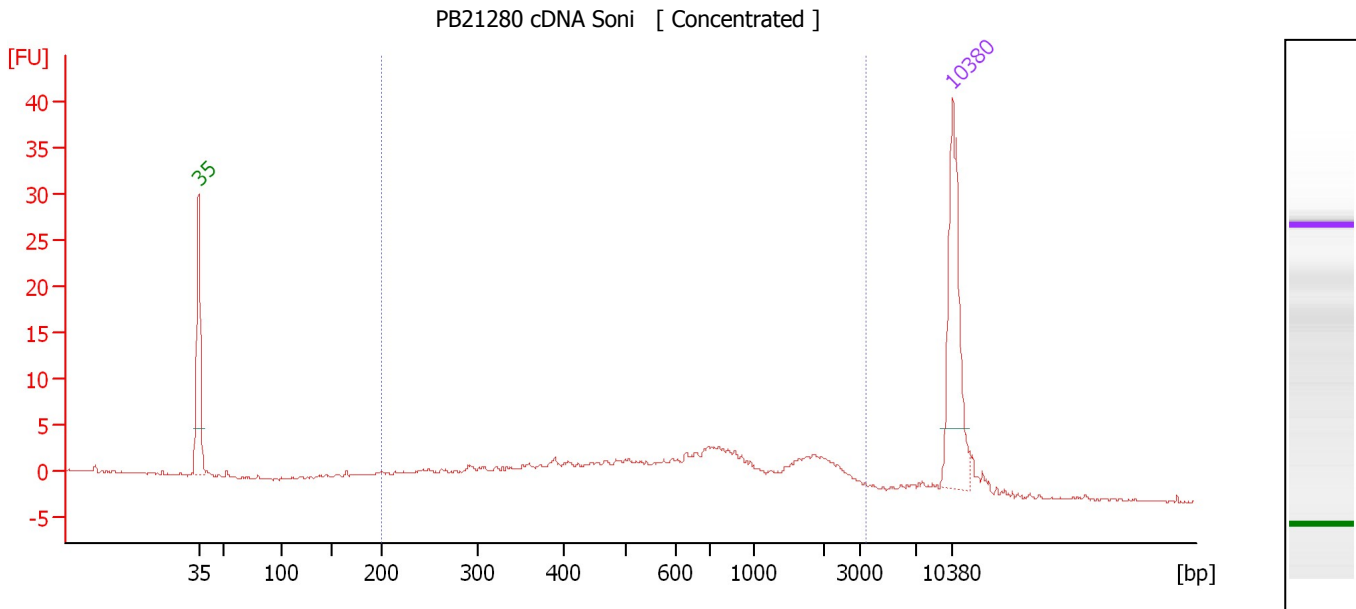
Region table for sample 9 : PB21291 cDNA Soni

From [bp]	To [bp]	Average Size [bp]	Molarity [pmol/l]	Conc. [pg/μl]	Corr. Area	% of Total	Size distribution in CV [%]	Color
200	1,000	484	278.1	69.92	44.8	61	39.6	Blue

Assay Class: High Sensitivity DNA Assay
 Data Path: C:\...ents and Settings\Bioanalyzer\2013-10-24\2013-10-24_006.xad

Created: 10/24/2013 5:59:41 PM
 Modified: 10/24/2013 6:41:50 PM

Electropherogram Summary Continued ...



Overall Results for sample 10 : PB21280 cDNA Soni

Number of peaks found: 0 Corr. Area 1: 120.2
 Noise: 0.1

Peak table for sample 10 : PB21280 cDNA Soni

Peak	Size [bp]	Conc. [pg/μl]	Molarity [pmol/l]	Observations
1	35	125.00	5,411.3	Lower Marker
2	10,380	75.00	10.9	Upper Marker

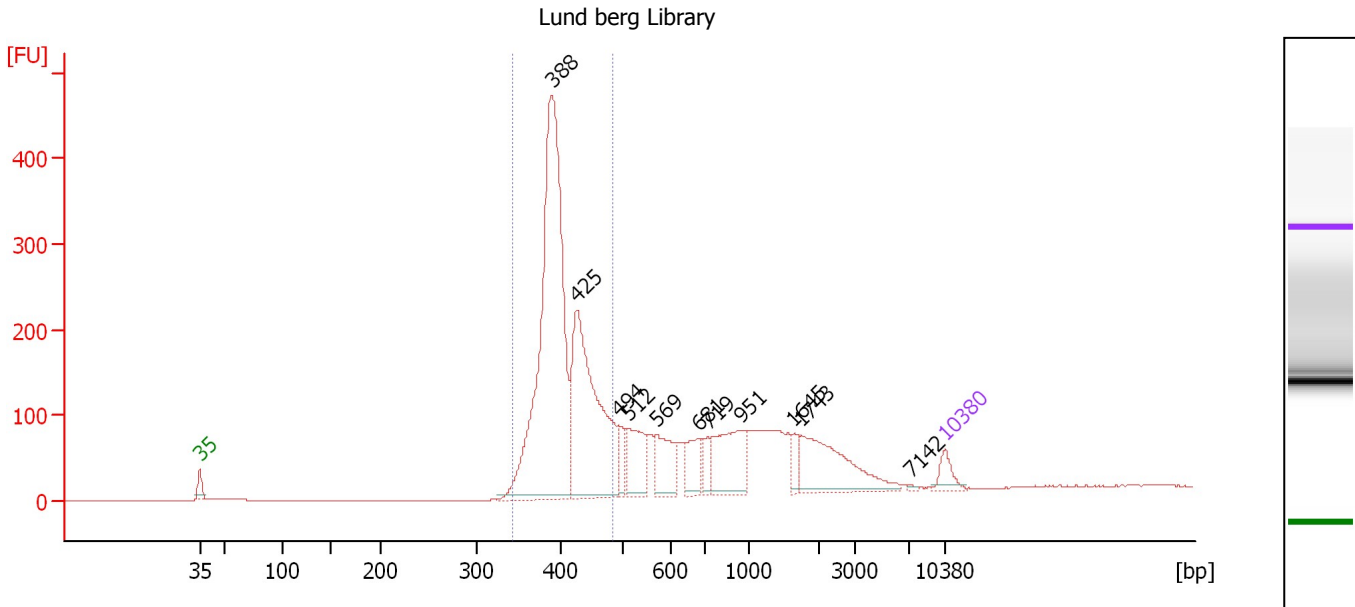
Region table for sample 10 : PB21280 cDNA Soni

From [bp]	To [bp]	Average Size [bp]	Molarity [pmol/l]	Conc. [pg/μl]	Corr. Area	% of Total	Size distribution in CV [%]	Color
200	3,379	875	844.2	275.47	120.2	88	74.6	Blue

Assay Class: High Sensitivity DNA Assay
 Data Path: C:\...ents and Settings\Bioanalyzer\2013-10-24\2013-10-24_006.xad

Created: 10/24/2013 5:59:41 PM
 Modified: 10/24/2013 6:41:50 PM

Electropherogram Summary Continued ...



Overall Results for sample 11 : Lund berg Library

Number of peaks found: 11 Corr. Area 1: 2,098.1
 Noise: 0.1

Peak table for sample 11 : Lund berg Library

Peak	Size [bp]	Conc. [pg/µl]	Molarity [pmol/l]	Observations
1	35	125.00	5,411.3	Lower Marker
2	388	2,710.84	10,573.2	
3	425	1,408.97	5,021.5	
4	494	125.38	384.6	
5	512	334.09	988.8	
6	569	279.27	744.0	
7	681	201.49	448.0	
8	719	94.27	198.6	
9	951	393.55	627.0	
10	1,645	68.26	62.9	
11	1,743	482.17	419.0	
12	7,142	8.44	1.8	
13	10,380	75.00	10.9	Upper Marker

Region table for sample 11 : Lund berg Library

From [bp]	To [bp]	Average Size [bp]	Molarity [pmol/l]	Conc. [pg/µl]	Corr. Area	% of Total	Size distribution in CV [%]	Color
343	484	405	14,602.5	3,884.16	2,098.1	56	7.7	Blue

Assay Class: High Sensitivity DNA Assay
Data Path: C:\...ents and Settings\Bioanalyzer\2013-10-24\2013-10-24_006.xad

Created: 10/24/2013 5:59:41 PM
Modified: 10/24/2013 6:41:50 PM

Gel Image

