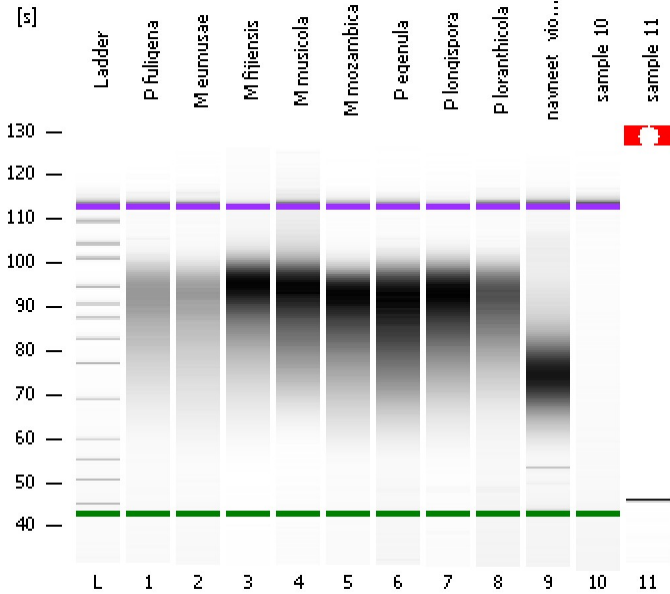


Assay Class: High Sensitivity DNA Assay  
Data Path: C:\...ents and Settings\Bioanalyzer\2013-10-25\2013-10-25\_001.xad

Created: 10/25/2013 10:52:28 AM  
Modified: 10/25/2013 11:32:03 AM

Electrophoresis File Run Summary



Instrument Information:

Instrument Name: DE13701086      Firmware: C.01.069  
Serial#: DE13701086      Type: G2938B

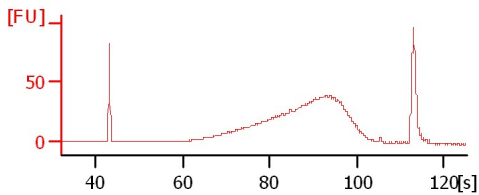
Assay Information:

Assay Origin Path: C:\Program Files\Agilent\2100 bioanalyzer\2100 expert\assays\dsDNA\High Sensitivity DNA.xsy  
Assay Class: High Sensitivity DNA Assay  
Version: 1.03  
Assay Comments: Copyright © 2003-2010 Agilent Technologies

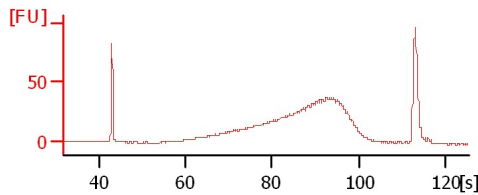
Chip Information:

Chip Lot #:   
Reagent Kit Lot #:   
Chip Comments:

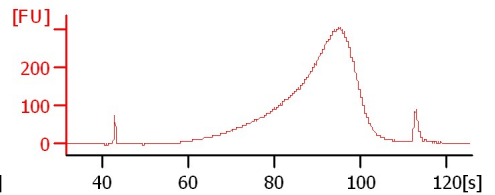
P fuligena



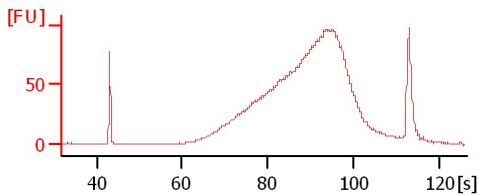
M eumusae



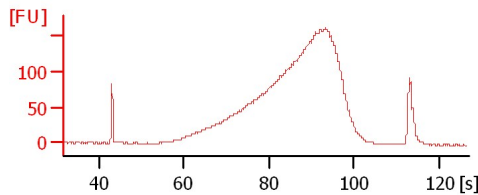
M fijiensis



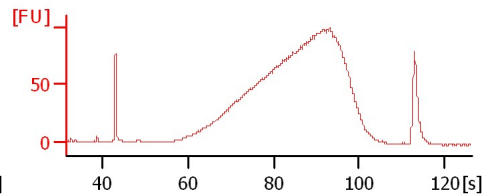
M musicola



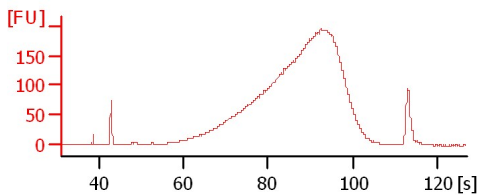
M mozambica



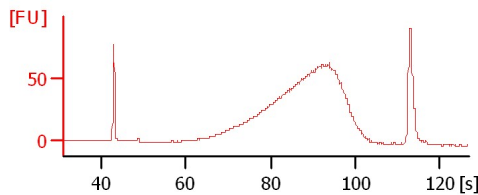
P egenula



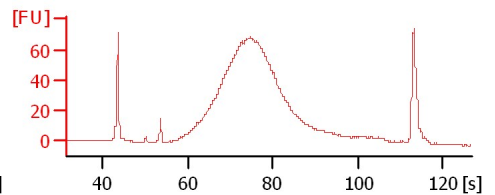
P longispora



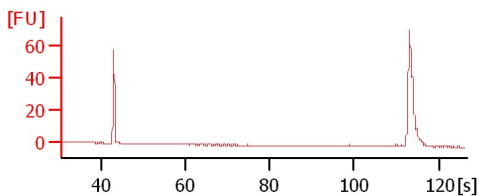
P loranthicola



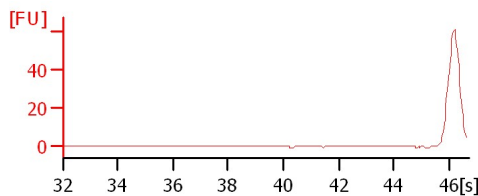
navneet & violeta



sample 10



sample 11



Assay Class: High Sensitivity DNA Assay  
 Data Path: C:\...ents and Settings\Bioanalyzer\2013-10-25\2013-10-25\_001.xad

Created: 10/25/2013 10:52:28 AM  
 Modified: 10/25/2013 11:32:03 AM

**Electrophoresis File Run Summary (Chip Summary)**

Sample Name	Sample Comment	Rest. Digest	Status	Observation	Result Label	Result Color
P fuligena		<input type="checkbox"/>	✓			
M eumusae		<input type="checkbox"/>	✓			
M fijiensis		<input type="checkbox"/>	✓			
M musicola		<input type="checkbox"/>	✓			
M mozambica		<input type="checkbox"/>	✓			
P egenula		<input type="checkbox"/>	✓			
P longispora		<input type="checkbox"/>	✓			
P loranthicola		<input type="checkbox"/>	✓			
navneet & violeta		<input type="checkbox"/>	✓			
sample 10		<input type="checkbox"/>	✓			
sample 11		<input type="checkbox"/>	✗			
Ladder		<input type="checkbox"/>	✓			

**Chip Lot #**

**Reagent Kit Lot #**

**Chip Comments :**

Assay Class: High Sensitivity DNA Assay  
Data Path: C:\...ents and Settings\Bioanalyzer\2013-10-25\2013-10-25\_001.xad

Created: 10/25/2013 10:52:28 AM  
Modified: 10/25/2013 11:32:03 AM

**Electrophoresis Assay Details**

**General Analysis Settings**

Number of Available Sample and Ladder Wells (Max.) : 12  
Minimum Visible Range [s] : 32  
Maximum Visible Range [s] : 138  
Start Analysis Time Range [s] : 33  
End Analysis Time Range [s] : 137.5  
Ladder Concentration [pg/μl] : 1950  
Uses Standard Area for Ladder Fragments  
Lower Marker Concentration [pg/μl] : 125  
Upper Marker Concentration [pg/μl] : 75  
Used Upper Marker for Quantitation  
Standard Curve Fit is Point to Point  
Show Data Aligned to Lower and Upper Marker

**Integrator Settings**

Integration Start Time [s] : 33.05  
Integration End Time [s] : 137  
Slope Threshold : 0.8  
Height Threshold [FU] : 5  
Area Threshold : 0.1  
Width Threshold [s] : 0.6  
Baseline Plateau [s] : 0.5

**Filter Settings**

Filter Width [s] : 0.5  
Polynomial Order : 4

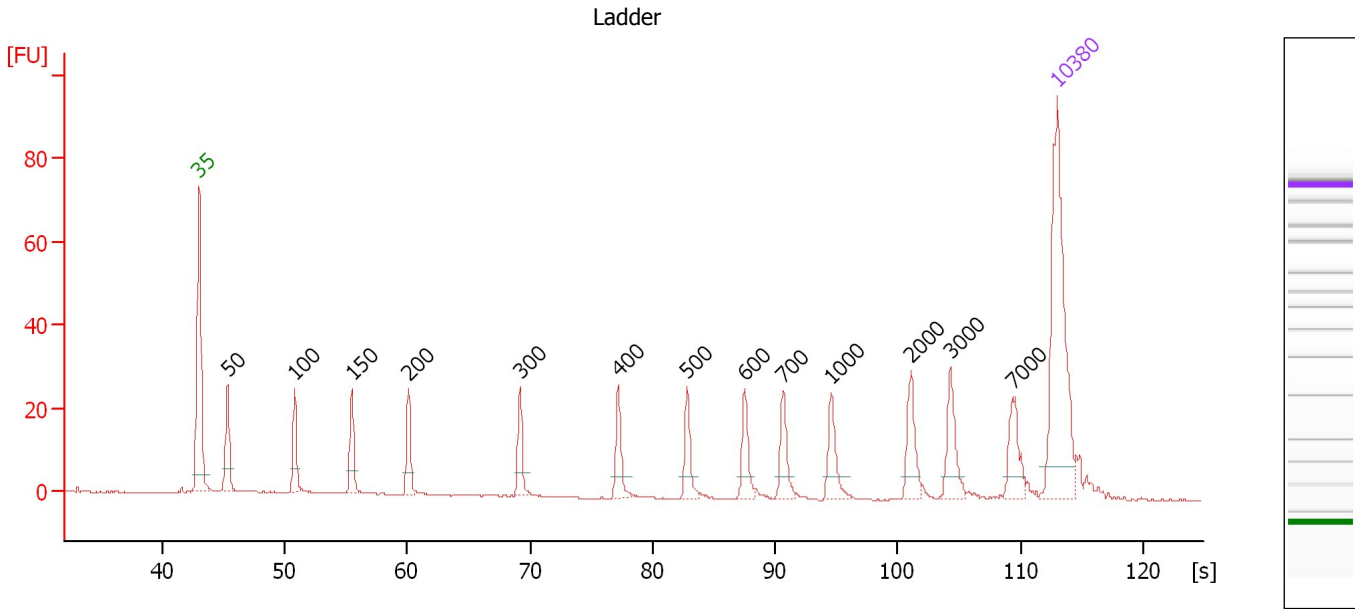
**Ladder**

Ladder Peak	Size	Area
1	35	160
2	50	210
3	100	208
4	150	221
5	200	242
6	300	270
7	400	305
8	500	306
9	600	336
10	700	321
11	1000	366
12	2000	413
13	3000	411
14	7000	400
15	10380	214

Assay Class: High Sensitivity DNA Assay  
 Data Path: C:\...ents and Settings\Bioanalyzer\2013-10-25\2013-10-25\_001.xad

Created: 10/25/2013 10:52:28 AM  
 Modified: 10/25/2013 11:32:03 AM

**Electropherogram Summary**



**Overall Results for Ladder**

Noise: 0.1

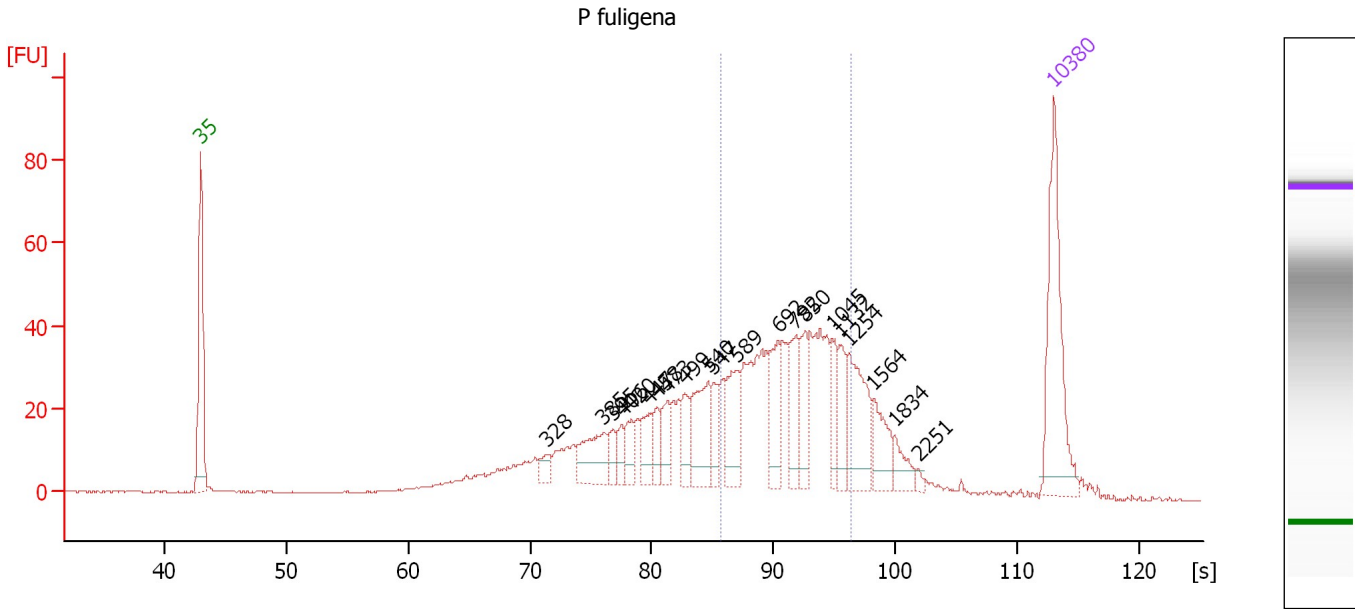
**Peak table for Ladder**

Peak	Size [bp]	Conc. [pg/μl]	Molarity [pmol/l]	Observations
1	35	125.00	5,411.3	Lower Marker
2	50	150.00	4,545.5	Ladder Peak
3	100	150.00	2,272.7	Ladder Peak
4	150	150.00	1,515.2	Ladder Peak
5	200	150.00	1,136.4	Ladder Peak
6	300	150.00	757.6	Ladder Peak
7	400	150.00	568.2	Ladder Peak
8	500	150.00	454.5	Ladder Peak
9	600	150.00	378.8	Ladder Peak
10	700	150.00	324.7	Ladder Peak
11	1,000	150.00	227.3	Ladder Peak
12	2,000	150.00	113.6	Ladder Peak
13	3,000	150.00	75.8	Ladder Peak
14	7,000	150.00	32.5	Ladder Peak
15	10,380	75.00	10.9	Upper Marker

Assay Class: High Sensitivity DNA Assay  
 Data Path: C:\...ents and Settings\Bioanalyzer\2013-10-25\2013-10-25\_001.xad

Created: 10/25/2013 10:52:28 AM  
 Modified: 10/25/2013 11:32:03 AM

**Electropherogram Summary Continued ...**



**Overall Results for sample 1 : P fuligena**

Number of peaks found: 21                      Corr. Area 1: 430.7  
 Noise: 0.2

**Peak table for sample 1 : P fuligena**

Peak	Size [bp]	Conc. [pg/μl]	Molarity [pmol/l]	Observations
1	35	125.00	5,411.3	Lower Marker
2	328	11.04	51.1	
3	385	40.60	159.6	
4	395	11.08	42.5	
5	406	12.64	47.2	
6	420	15.43	55.7	
7	447	20.65	70.0	
8	458	15.95	52.8	
9	473	20.39	65.4	
10	499	20.99	63.8	
11	540	48.71	136.8	
12	547	18.51	51.3	
13	589	36.75	94.5	
14	692	38.80	85.0	
15	792	30.48	58.3	
16	850	26.78	47.8	
17	1,045	19.04	27.6	
18	1,132	23.43	31.3	
19	1,254	51.19	61.9	
20	1,564	24.82	24.0	
21	1,834	12.90	10.7	
22	2,251	2.48	1.7	
23	10,380	75.00	10.9	Upper Marker

Assay Class: High Sensitivity DNA Assay  
Data Path: C:\...ents and Settings\Bioanalyzer\2013-10-25\2013-10-25\_001.xad

Created: 10/25/2013 10:52:28 AM  
Modified: 10/25/2013 11:32:03 AM

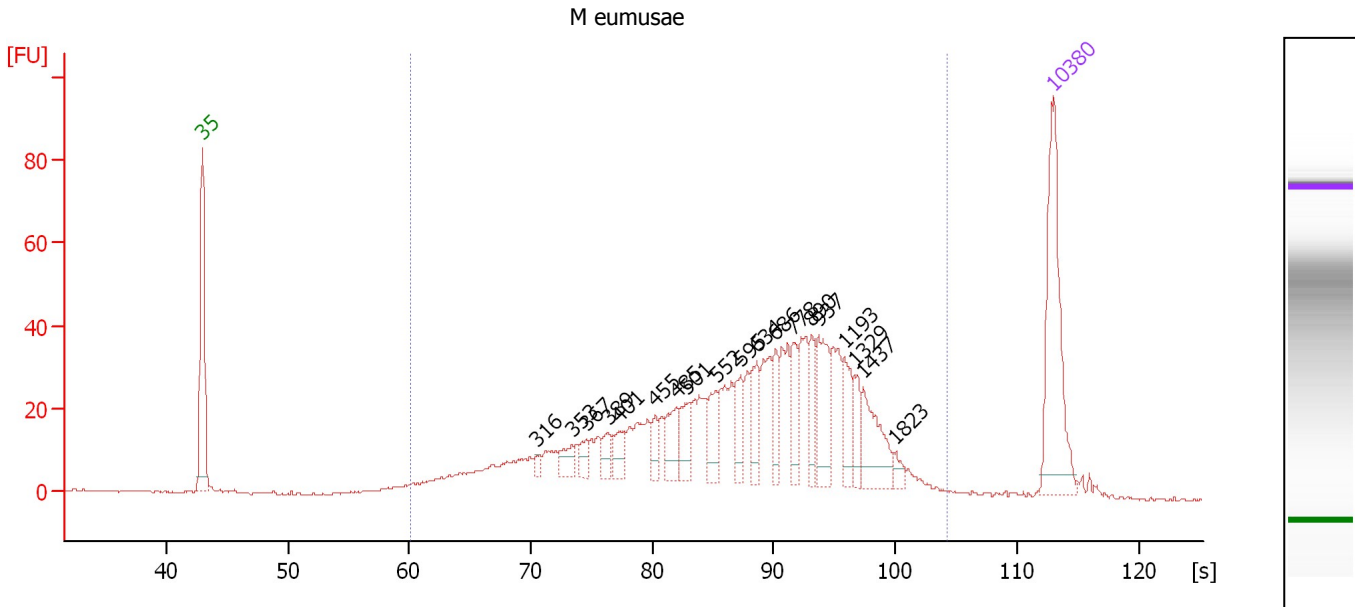
**Electropherogram Summary Continued ...****... Region table for sample 1 : P fuligena**

<b>From [bp]</b>	<b>To [bp]</b>	<b>Average Size [bp]</b>	<b>Molarity [pmol/l]</b>	<b>Conc. [pg/μl]</b>	<b>Corr. Area</b>	<b>% of Total</b>	<b>Size distribution in CV [%]</b>	<b>Co lor</b>
560	1,278	804	798.2	396.76	430.7	43	24.4	

Assay Class: High Sensitivity DNA Assay  
 Data Path: C:\...ents and Settings\Bioanalyzer\2013-10-25\2013-10-25\_001.xad

Created: 10/25/2013 10:52:28 AM  
 Modified: 10/25/2013 11:32:03 AM

**Electropherogram Summary Continued ...**



**Overall Results for sample 2 : M eumusae**

Number of peaks found: 19      Corr. Area 1: 923.4  
 Noise: 0.2

**Peak table for sample 2 : M eumusae**

Peak	Size [bp]	Conc. [pg/μl]	Molarity [pmol/l]	Observations
1	35	125.00	5,411.3	Lower Marker
2	316	4.45	21.3	
3	353	13.67	58.7	
4	367	11.47	47.3	
5	389	11.99	46.7	
6	401	15.67	59.2	
7	455	11.69	38.9	
8	485	24.74	77.2	
9	501	22.07	66.7	
10	552	20.42	56.0	
11	595	20.06	51.1	
12	634	23.77	56.8	
13	686	19.19	42.4	
14	778	22.82	44.5	
15	890	19.41	33.1	
16	937	36.78	59.5	
17	1,193	21.07	26.7	
18	1,329	13.36	15.2	
19	1,437	34.54	36.4	
20	1,823	5.38	4.5	
21	10,380	75.00	10.9	Upper Marker

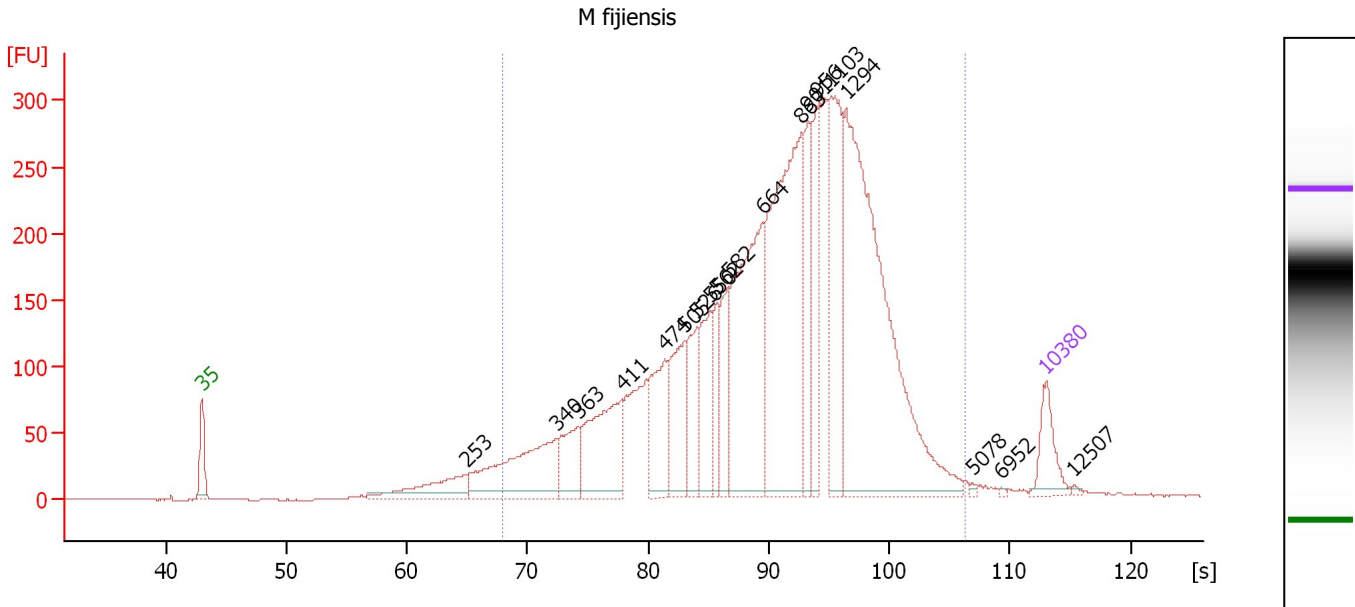
**Region table for sample 2 : M eumusae**

From [bp]	To [bp]	Average Size [bp]	Molarity [pmol/l]	Conc. [pg/μl]	Corr. Area	% of Total	Size distribution in CV [%]	Color
200	2,974	750	2,494.0	855.01	923.4	97	56.8	Blue

Assay Class: High Sensitivity DNA Assay  
 Data Path: C:\...ents and Settings\Bioanalyzer\2013-10-25\2013-10-25\_001.xad

Created: 10/25/2013 10:52:28 AM  
 Modified: 10/25/2013 11:32:03 AM

**Electropherogram Summary Continued ...**



**Overall Results for sample 3 : M fijiensis**

Number of peaks found: 19      Corr. Area 1: 5,667.7  
 Noise: 0.2

**Peak table for sample 3 : M fijiensis**

Peak	Size [bp]	Conc. [pg/μl]	Molarity [pmol/l]	Observations
1	35	125.00	5,411.3	Lower Marker
2	253	153.09	915.2	
3	340	354.59	1,578.3	
4	363	130.09	543.6	
5	411	309.56	1,141.5	
6	474	202.89	648.0	
7	505	215.34	646.7	
8	526	152.51	439.0	
9	550	166.93	459.7	
10	562	102.10	275.5	
11	582	135.12	352.1	
12	664	570.37	1,302.0	
13	863	776.43	1,362.5	
14	901	168.48	283.3	
15	956	180.68	286.4	
16	1,103	332.35	456.4	
17	1,294	1,008.11	1,180.1	
18	5,078	4.20	1.3	
19	6,952	2.71	0.6	
20	10,380	75.00	10.9	Upper Marker
21	12,507	0.00	0.0	

**Region table for sample 3 : M fijiensis**

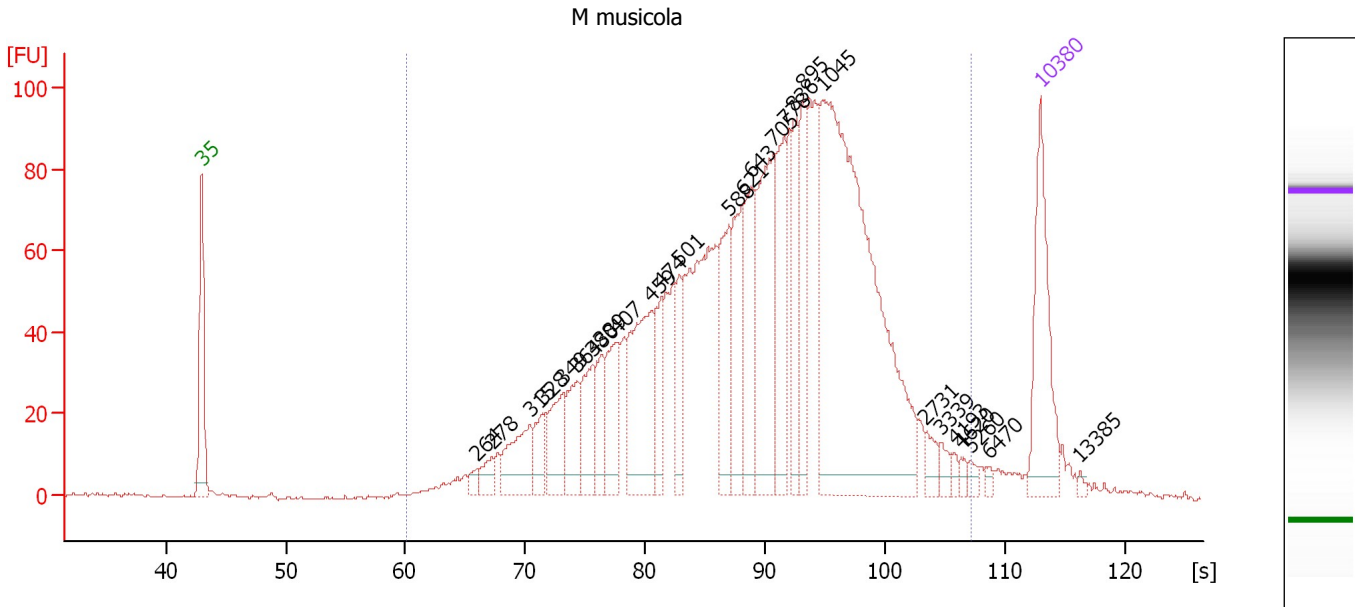
From [bp]	To [bp]	Average Size [bp]	Molarity [pmol/l]	Conc. [pg/μl]	Corr. Area	% of Total	Size distribution in CV [%]	Color
287	4,586	940	11,815.9	5,129.13	5,667.7	95	57.8	Blue



Assay Class: High Sensitivity DNA Assay  
 Data Path: C:\...ents and Settings\Bioanalyzer\2013-10-25\2013-10-25\_001.xad

Created: 10/25/2013 10:52:28 AM  
 Modified: 10/25/2013 11:32:03 AM

**Electropherogram Summary Continued ...**



**Overall Results for sample 4 : M musicola**

Number of peaks found: 27                      Corr. Area 1: 2,288.9  
 Noise: 0.4

**Peak table for sample 4 : M musicola**


Peak	Size [bp]	Conc. [pg/μl]	Molarity [pmol/l]	Observations
1	35	125.00	5,411.3	Lower Marker
2	264	8.37	48.1	
3	278	17.25	94.0	
4	315	55.41	266.7	
5	328	28.60	132.0	
6	349	50.27	218.0	
7	364	43.82	182.4	
8	380	44.27	176.4	
9	389	34.89	136.1	
10	407	54.77	204.0	
11	459	114.45	377.9	
12	474	37.34	119.4	
13	501	38.81	117.3	
14	588	70.11	180.5	
15	621	71.45	174.2	
16	643	70.14	165.3	
17	705	137.23	294.9	
18	778	74.77	145.7	
19	836	53.60	97.1	
20	895	57.59	97.5	
21	1,045	424.62	615.9	
22	2,731	10.98	6.1	
23	3,339	8.26	3.7	
24	4,193	4.01	1.4	
25	4,620	4.35	1.4	
26	5,260	5.09	1.5	

Assay Class: High Sensitivity DNA Assay  
 Data Path: C:\...ents and Settings\Bioanalyzer\2013-10-25\2013-10-25\_001.xad


Created: 10/25/2013 10:52:28 AM  
 Modified: 10/25/2013 11:32:03 AM

### Electropherogram Summary Continued ...

#### ... Peak table for sample 4 : M musicola

Peak	Size [bp]	Conc. [pg/μl]	Molarity [pmol/l]	Observations
27	6,470	2.71	0.6	
28	 10,380	75.00	10.9	Upper Marker
29	13,385	0.00	0.0	

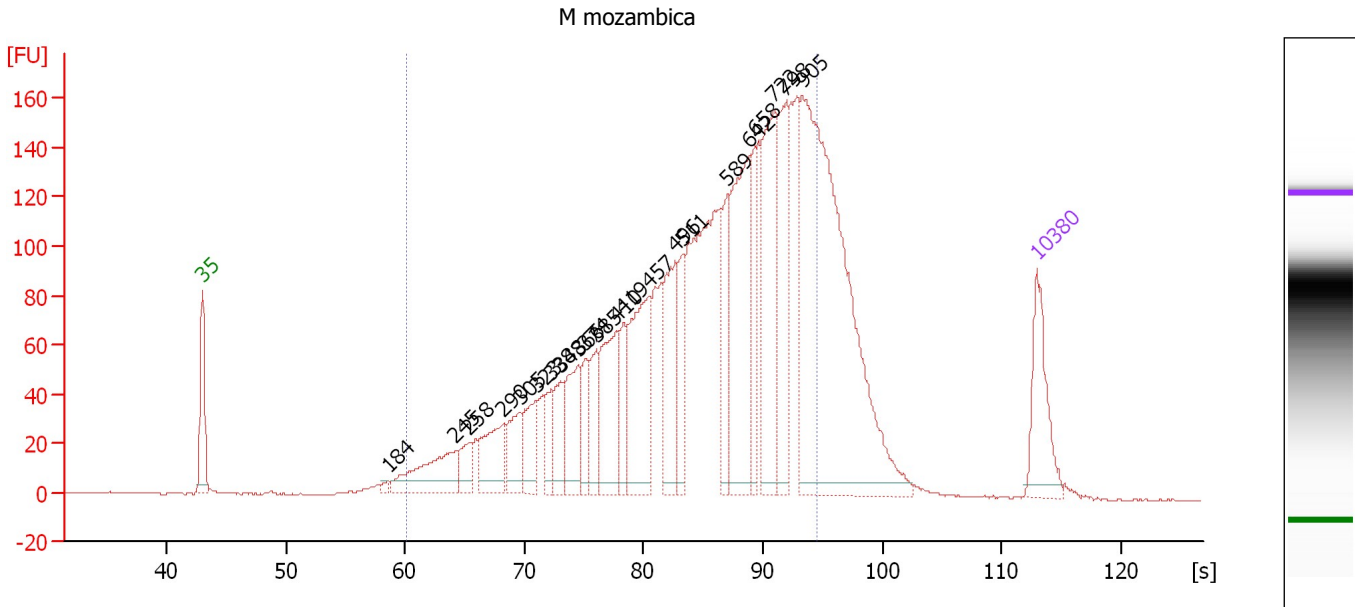
#### Region table for sample 4 : M musicola

From [bp]	To [bp]	Average Size [bp]	Molarity [pmol/l]	Conc. [pg/μl]	Corr. Area	% of Total	Size distribution in CV [%]	Color
200	5,312	910	5,062.0	1,970.59	2,288.9	97	72.1	

Assay Class: High Sensitivity DNA Assay  
 Data Path: C:\...ents and Settings\Bioanalyzer\2013-10-25\2013-10-25\_001.xad

Created: 10/25/2013 10:52:28 AM  
 Modified: 10/25/2013 11:32:03 AM

**Electropherogram Summary Continued ...**



**Overall Results for sample 5 : M mozambica**

Number of peaks found: 22                      Corr. Area 1: 3,177.9  
 Noise: 0.3

**Peak table for sample 5 : M mozambica**

Peak	Size [bp]	Conc. [pg/μl]	Molarity [pmol/l]	Observations
1	35	125.00	5,411.3	Lower Marker
2	184	6.73	55.6	
3	245	116.32	718.7	
4	258	38.24	224.9	
5	290	89.34	467.3	
6	305	65.45	325.0	
7	323	64.41	302.6	
8	338	48.31	216.8	
9	348	53.45	232.8	
10	366	95.69	396.4	
11	374	44.99	182.5	
12	385	52.74	207.6	
13	410	136.32	504.2	
14	419	49.09	177.4	
15	457	180.99	600.0	
16	496	132.59	404.7	
17	511	64.04	189.9	
18	589	76.00	195.6	
19	642	228.24	538.3	
20	658	81.84	188.3	
21	722	208.85	438.5	
22	798	147.42	280.0	
23	905	649.12	1,086.5	
24	10,380	75.00	10.9	Upper Marker

Assay Class: High Sensitivity DNA Assay  
Data Path: C:\...ents and Settings\Bioanalyzer\2013-10-25\2013-10-25\_001.xad

Created: 10/25/2013 10:52:28 AM  
Modified: 10/25/2013 11:32:03 AM

**Electropherogram Summary Continued ...**

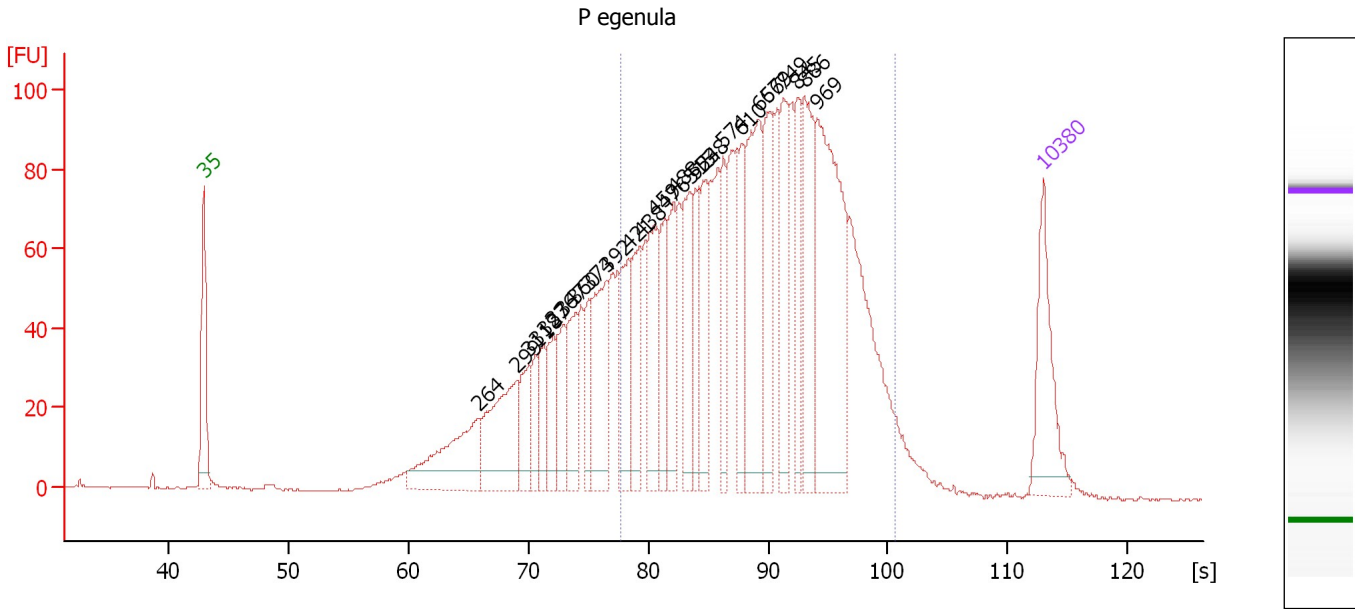
... Region table for sample 5 : M mozambica

From [bp]	To [bp]	Average Size [bp]	Molarity [pmol/l]	Conc. [pg/μl]	Corr. Area	% of Total	Size distribution in CV [%]	Color
200	1,000	573	9,313.7	2,903.35	3,177.9	84	34.0	■

Assay Class: High Sensitivity DNA Assay  
 Data Path: C:\...ents and Settings\Bioanalyzer\2013-10-25\2013-10-25\_001.xad

Created: 10/25/2013 10:52:28 AM  
 Modified: 10/25/2013 11:32:03 AM

**Electropherogram Summary Continued ...**



**Overall Results for sample 6 : P. eugenula**

Number of peaks found: 26                      Corr. Area 1: 2,009.0  
 Noise: 0.2

**Peak table for sample 6 : P. eugenula**

Peak	Size [bp]	Conc. [pg/μl]	Molarity [pmol/l]	Observations
1	35	125.00	5,411.3	Lower Marker
2	264	132.27	760.5	
3	299	134.70	682.9	
4	311	52.93	257.8	
5	318	34.49	164.2	
6	327	41.79	193.8	
7	336	49.05	221.1	
8	347	57.46	251.1	
9	360	66.26	279.2	
10	374	43.08	174.8	
11	392	102.13	394.8	
12	421	77.84	280.0	
13	438	73.27	253.4	
14	459	90.88	300.1	
15	476	62.71	199.5	
16	488	69.61	216.0	
17	515	84.14	247.7	
18	524	58.08	167.9	
19	538	71.62	201.9	
20	574	58.54	154.6	
21	610	68.70	170.8	
22	656	158.47	366.3	
23	679	105.40	235.3	
24	749	91.00	184.2	
25	845	62.51	112.1	
26	886	110.35	188.6	

Assay Class: High Sensitivity DNA Assay  
Data Path: C:\...ents and Settings\Bioanalyzer\2013-10-25\2013-10-25\_001.xad

Created: 10/25/2013 10:52:28 AM  
Modified: 10/25/2013 11:32:03 AM

**Electropherogram Summary Continued ...****... Peak table for sample 6 : P egenula**

Peak	Size [bp]	Conc. [pg/μl]	Molarity [pmol/l]	Observations
27	969	229.81	359.3	
28	▶ 10,380	75.00	10.9	Upper Marker

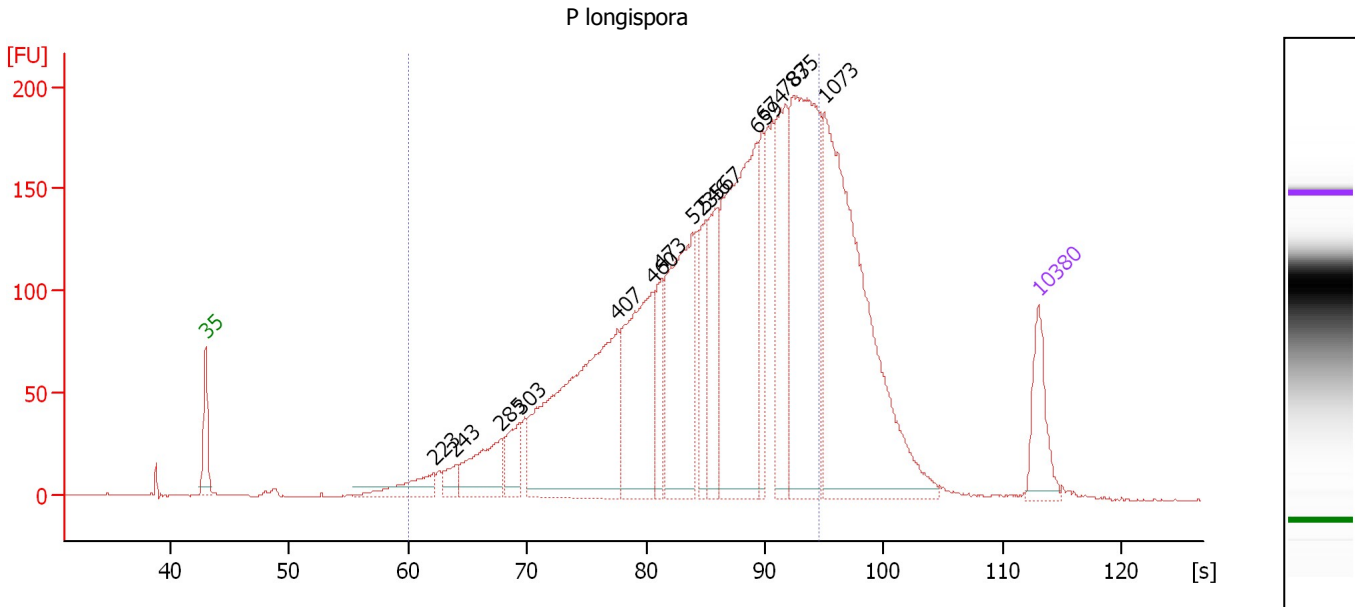
**Region table for sample 6 : P egenula**

From [bp]	To [bp]	Average Size [bp]	Molarity [pmol/l]	Conc. [pg/μl]	Corr. Area	% of Total	Size distribution in CV [%]	Color
409	1,921	778	4,744.1	2,017.17	2,009.0	71	44.0	■

Assay Class: High Sensitivity DNA Assay  
 Data Path: C:\...ents and Settings\Bioanalyzer\2013-10-25\2013-10-25\_001.xad

Created: 10/25/2013 10:52:28 AM  
 Modified: 10/25/2013 11:32:03 AM

**Electropherogram Summary Continued ...**



**Overall Results for sample 7 : P longispora**

Number of peaks found: 15      Corr. Area 1: 3,780.1  
 Noise: 0.2

**Peak table for sample 7 : P longispora**

Peak	Size [bp]	Conc. [pg/μl]	Molarity [pmol/l]	Observations
1	35	125.00	5,411.3	Lower Marker
2	223	75.11	510.3	
3	243	34.94	218.0	
4	285	141.52	751.2	
5	303	74.09	371.0	
6	407	590.09	2,195.6	
7	460	321.86	1,061.2	
8	473	85.05	272.3	
9	523	346.27	1,003.4	
10	546	119.38	331.3	
11	567	140.93	376.5	
12	659	530.99	1,220.2	
13	674	106.46	239.4	
14	787	216.14	416.3	
15	835	512.72	930.0	
16	1,073	657.28	927.9	
17	10,380	75.00	10.9	Upper Marker

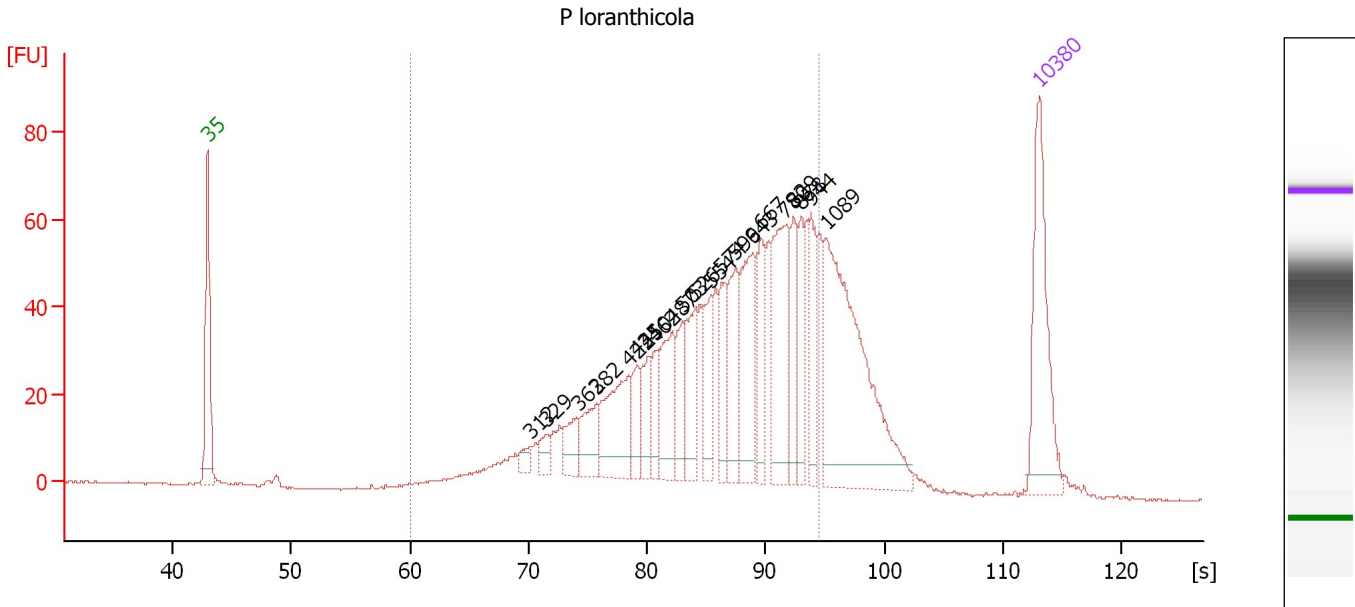
**Region table for sample 7 : P longispora**

From [bp]	To [bp]	Average Size [bp]	Molarity [pmol/l]	Conc. [pg/μl]	Corr. Area	% of Total	Size distribution in CV [%]	Color
200	1,000	580	10,949.3	3,504.79	3,780.1	79	33.0	Blue

Assay Class: High Sensitivity DNA Assay  
 Data Path: C:\...ents and Settings\Bioanalyzer\2013-10-25\2013-10-25\_001.xad

Created: 10/25/2013 10:52:28 AM  
 Modified: 10/25/2013 11:32:03 AM

**Electropherogram Summary Continued ...**



**Overall Results for sample 8 : P loranthicola**

Number of peaks found: 21      Corr. Area 1: 1,141.8  
 Noise: 0.2

**Peak table for sample 8 : P loranthicola**

Peak	Size [bp]	Conc. [pg/μl]	Molarity [pmol/l]	Observations
1	35	125.00	5,411.3	Lower Marker
2	312	9.91	48.2	
3	329	12.31	56.6	
4	362	23.19	97.1	
5	382	32.03	127.2	
6	422	70.72	253.8	
7	435	25.55	89.0	
8	450	27.30	91.8	
9	462	21.13	69.2	
10	487	56.17	174.6	
11	503	32.24	97.1	
12	526	45.51	131.0	
13	554	35.06	95.8	
14	574	37.36	98.7	
15	599	46.94	118.8	
16	643	74.22	174.8	
17	667	41.30	93.9	
18	780	92.03	178.8	
19	829	36.92	67.5	
20	878	33.44	57.7	
21	944	41.94	67.3	
22	1,089	186.55	259.6	
23	10,380	75.00	10.9	Upper Marker



Assay Class: High Sensitivity DNA Assay  
Data Path: C:\...ents and Settings\Bioanalyzer\2013-10-25\2013-10-25\_001.xad

Created: 10/25/2013 10:52:28 AM  
Modified: 10/25/2013 11:32:03 AM

**Electropherogram Summary Continued ...**

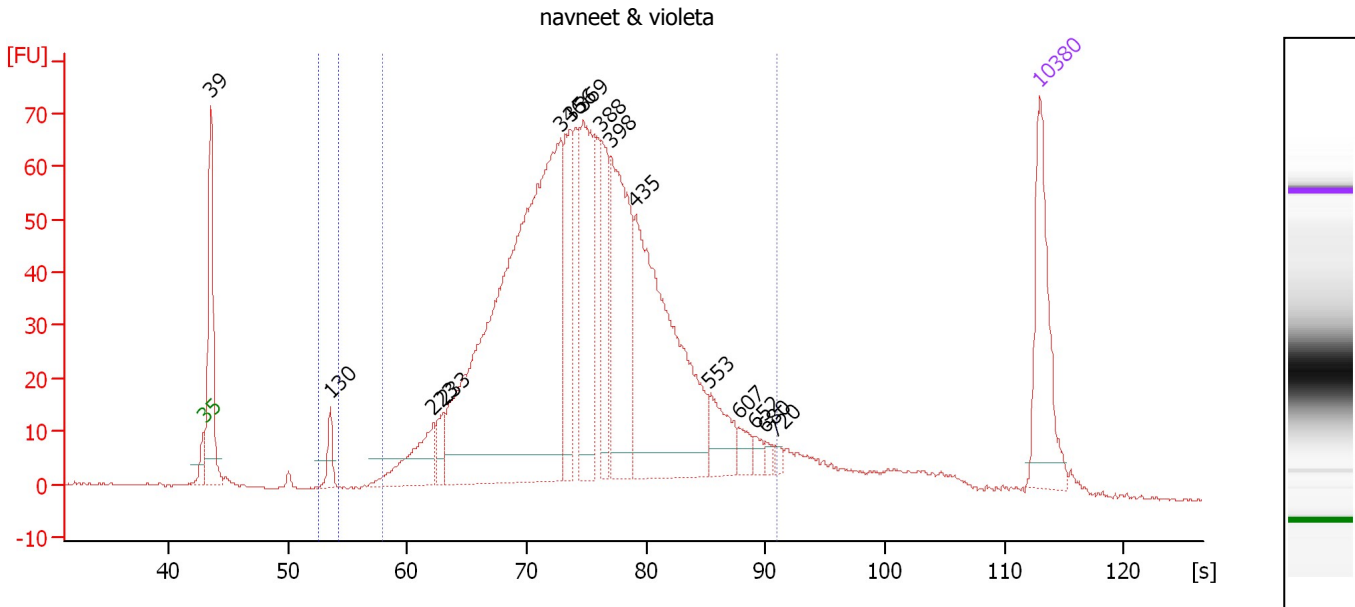
... Region table for sample 8 : P loranthicola

From [bp]	To [bp]	Average Size [bp]	Molarity [pmol/l]	Conc. [pg/μl]	Corr. Area	% of Total	Size distribution in CV [%]	Color
200	1,000	593	3,229.1	1,080.98	1,141.8	80	31.3	■

Assay Class: High Sensitivity DNA Assay  
 Data Path: C:\...ents and Settings\Bioanalyzer\2013-10-25\2013-10-25\_001.xad

Created: 10/25/2013 10:52:28 AM  
 Modified: 10/25/2013 11:32:03 AM

**Electropherogram Summary Continued ...**



**Overall Results for sample 9 : navneet & violeta**

Number of peaks found: 15                      Corr. Area 1: 1,527.9  
 Noise: 0.2    Corr. Area 2: 12.7

**Peak table for sample 9 : navneet & violeta**

Peak	Size [bp]	Conc. [pg/μl]	Molarity [pmol/l]	Observations
1	35	125.00	5,411.3	Lower Marker
2	39	156.95	6,132.8	
3	130	23.45	274.3	
4	223	69.49	471.8	
5	233	22.09	143.6	
6	346	697.55	3,058.0	
7	356	93.78	398.8	
8	369	148.46	609.3	
9	388	74.12	289.3	
10	398	177.12	673.7	
11	435	298.08	1,039.4	
12	553	39.76	108.9	
13	607	12.69	31.7	
14	652	7.31	17.0	
15	680	4.96	11.1	
16	720	4.36	9.2	
17	10,380	75.00	10.9	Upper Marker

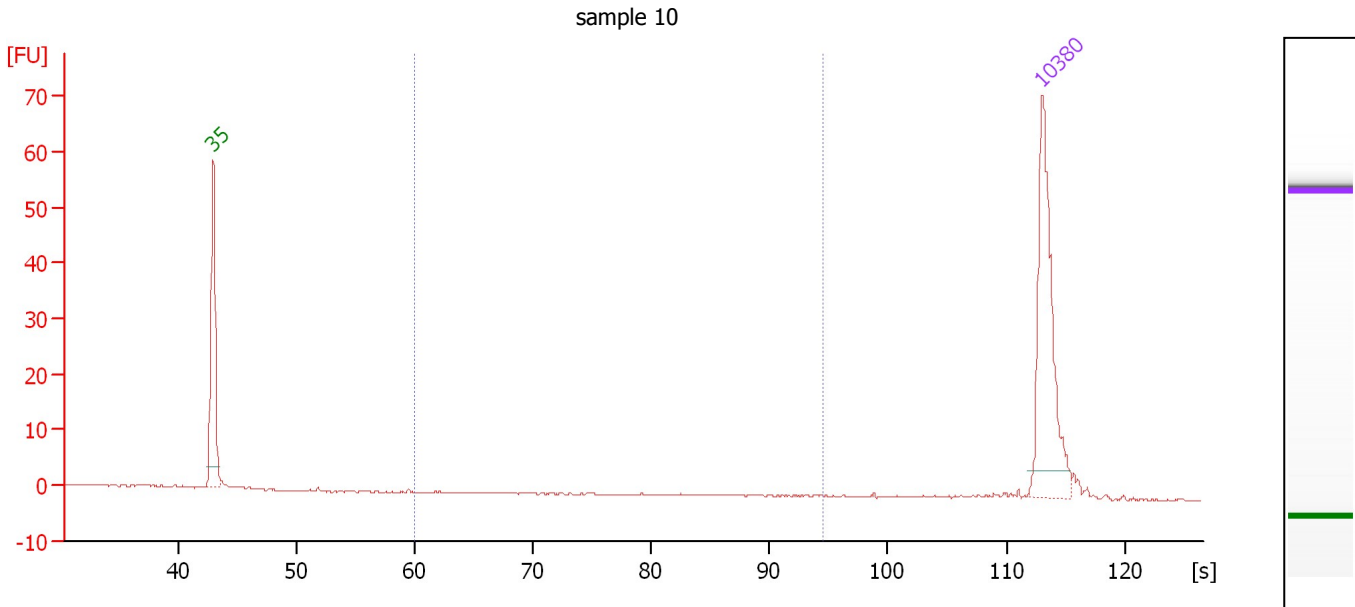
**Region table for sample 9 : navneet & violeta**

From [bp]	To [bp]	Average Size [bp]	Molarity [pmol/l]	Conc. [pg/μl]	Corr. Area	% of Total	Size distribution in CV [%]	Color
120	137	129	252.1	21.52	12.7	1	1.6	Blue
177	728	382	8,430.8	1,938.61	1,527.9	88	25.5	Dark Blue

Assay Class: High Sensitivity DNA Assay  
 Data Path: C:\...ents and Settings\Bioanalyzer\2013-10-25\2013-10-25\_001.xad

Created: 10/25/2013 10:52:28 AM  
 Modified: 10/25/2013 11:32:03 AM

**Electropherogram Summary Continued ...**



**Overall Results for sample 10 : sample 10**

Number of peaks found: 0                      Corr. Area 1: 0.0  
 Noise: 0.1

**Peak table for sample 10 : sample 10**

Peak	Size [bp]	Conc. [pg/μl]	Molarity [pmol/l]	Observations
1	35	125.00	5,411.3	Lower Marker
2	10,380	75.00	10.9	Upper Marker

**Region table for sample 10 : sample 10**

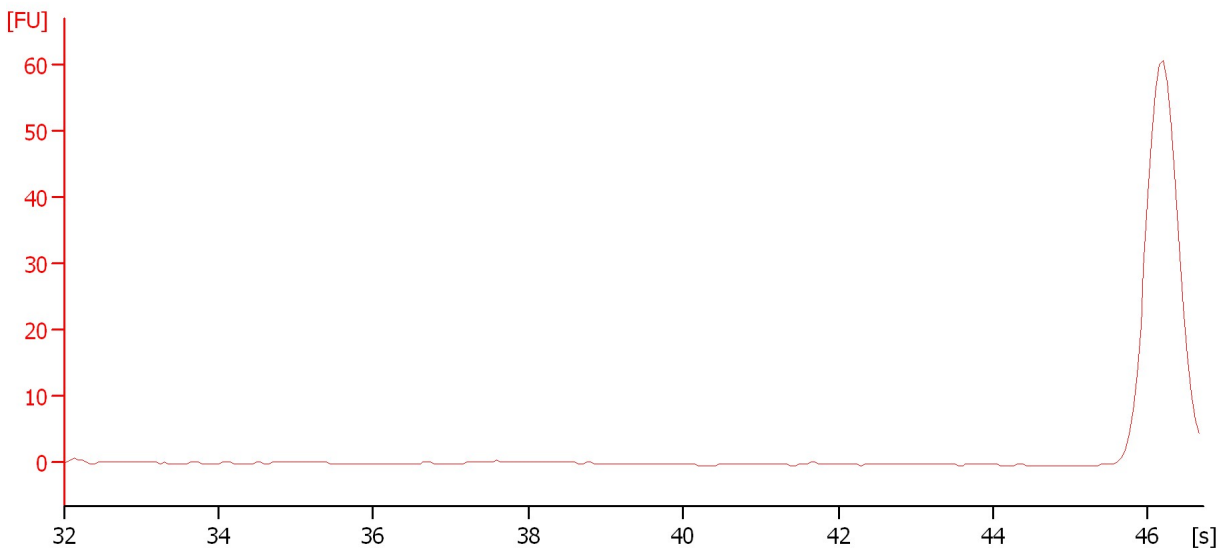
From [bp]	To [bp]	Average Size [bp]	Molarity [pmol/l]	Conc. [pg/μl]	Corr. Area	% of Total	Size distribution in CV [%]	Color
200	1,000	975	0.0	0.00	0.0	0	2.8	Blue

Assay Class: High Sensitivity DNA Assay  
Data Path: C:\...ents and Settings\Bioanalyzer\2013-10-25\2013-10-25\_001.xad

Created: 10/25/2013 10:52:28 AM  
Modified: 10/25/2013 11:32:03 AM

**Electropherogram Summary Continued ...**

sample 11



**Setpoint Deviations for sample 11 : sample 11**

End Analysis Time Range [s] : 46.7

**Overall Results for sample 11 : sample 11**

Noise: 0.1

Assay Class: High Sensitivity DNA Assay  
Data Path: C:\...ents and Settings\Bioanalyzer\2013-10-25\2013-10-25\_001.xad

Created: 10/25/2013 10:52:28 AM  
Modified: 10/25/2013 11:32:03 AM

**Gel Image**

