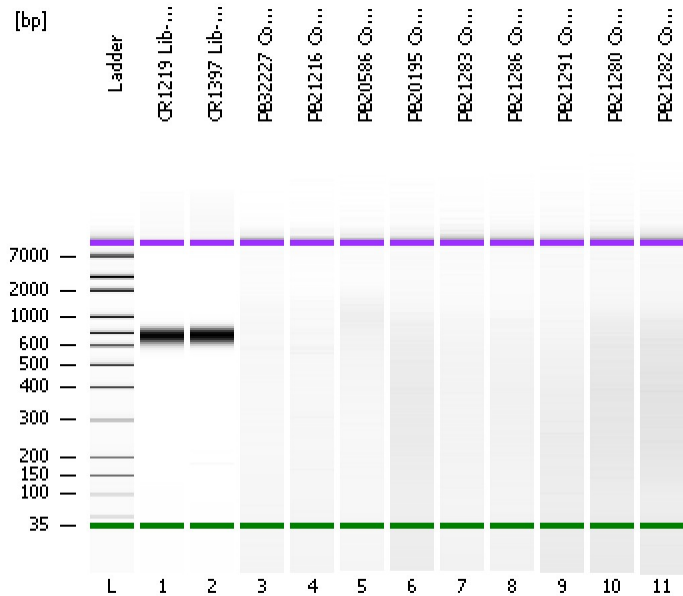


Assay Class: High Sensitivity DNA Assay
Data Path: C:\...ents and Settings\Bioanalyzer\2013-10-26\2013-10-26_001.xad

Created: 10/26/2013 9:52:41 AM
Modified: 10/26/2013 10:38:17 AM

Electrophoresis File Run Summary



Instrument Information:

Instrument Name: DE13701086 Firmware: C.01.069
Serial#: DE13701086 Type: G2938B

Assay Information:

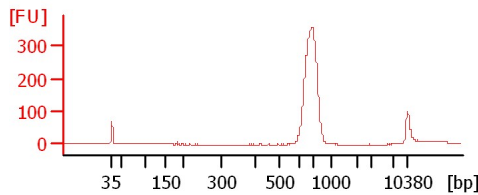
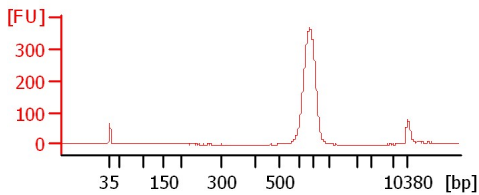
Assay Origin Path: C:\Program Files\Agilent\2100 bioanalyzer\2100 expert\assays\dsDNA\High Sensitivity DNA.xsy
Assay Class: High Sensitivity DNA Assay
Version: 1.03
Assay Comments: Copyright © 2003-2010 Agilent Technologies

Chip Information:

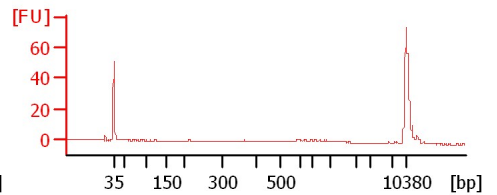
Chip Lot #:
Reagent Kit Lot #:
Chip Comments:

CR1219 Lib-Pipp 1:4

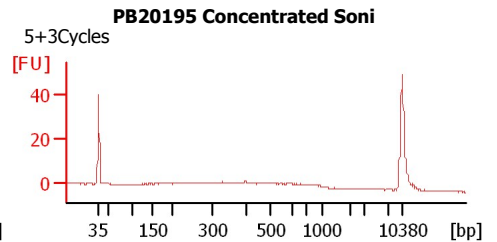
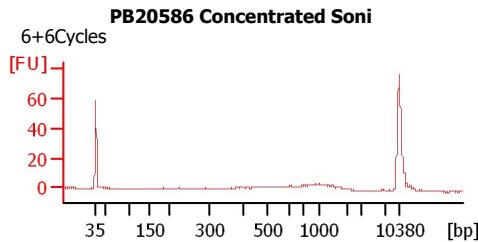
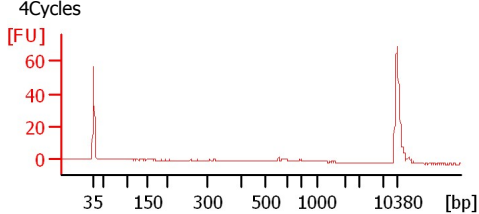
CR1397 Lib-Pipp 1:4



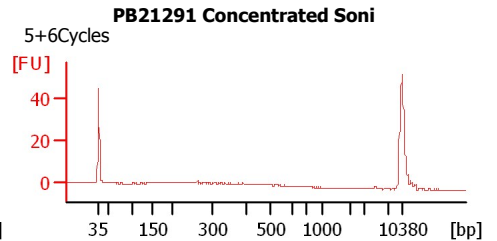
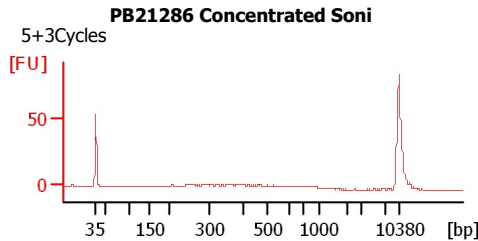
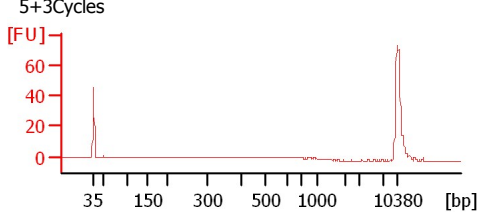
PB32227 Concentrated Soni 4Cycles



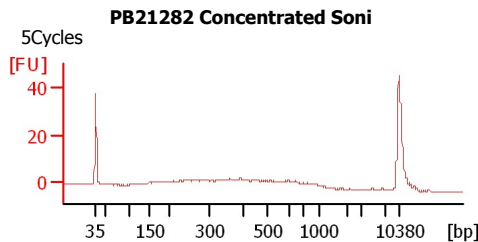
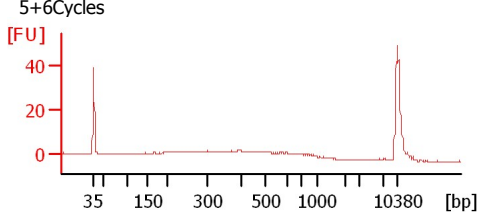
PB21216 Concentrated Soni 4Cycles



PB21283 Concentrated Soni 5+3Cycles



PB21280 Concentrated Soni 5+6Cycles



Assay Class: High Sensitivity DNA Assay
Data Path: C:\...ents and Settings\Bioanalyzer\2013-10-26\2013-10-26_001.xad

Created: 10/26/2013 9:52:41 AM
Modified: 10/26/2013 10:38:17 AM

Electrophoresis File Run Summary (Chip Summary)

Sample Name	Sample Comment	Rest. Digest	Status	Observation	Result Label	Result Color
CR1219 Lib-Pipp 1:4		<input type="checkbox"/>	✓			
CR1397 Lib-Pipp 1:4		<input type="checkbox"/>	✓			
PB32227 Concentrated Soni	4Cycles	<input type="checkbox"/>	✓			
PB21216 Concentrated Soni	4Cycles	<input type="checkbox"/>	✓			
PB20586 Concentrated Soni	6+6Cycles	<input type="checkbox"/>	✓			
PB20195 Concentrated Soni	5+3Cycles	<input type="checkbox"/>	✓			
PB21283 Concentrated Soni	5+3Cycles	<input type="checkbox"/>	✓			
PB21286 Concentrated Soni	5+3Cycles	<input type="checkbox"/>	✓			
PB21291 Concentrated Soni	5+6Cycles	<input type="checkbox"/>	✓			
PB21280 Concentrated Soni	5+6Cycles	<input type="checkbox"/>	✓			
PB21282 Concentrated Soni	5Cycles	<input type="checkbox"/>	✓			
Ladder		<input type="checkbox"/>	✓			

Chip Lot #

Reagent Kit Lot #

Chip Comments :

Assay Class: High Sensitivity DNA Assay
Data Path: C:\...ents and Settings\Bioanalyzer\2013-10-26\2013-10-26_001.xad

Created: 10/26/2013 9:52:41 AM
Modified: 10/26/2013 10:38:17 AM

Electrophoresis Assay Details

General Analysis Settings

Number of Available Sample and Ladder Wells (Max.) : 12
Minimum Visible Range [s] : 32
Maximum Visible Range [s] : 138
Start Analysis Time Range [s] : 33
End Analysis Time Range [s] : 137.5
Ladder Concentration [pg/ μ l] : 1950
Uses Standard Area for Ladder Fragments
Lower Marker Concentration [pg/ μ l] : 125
Upper Marker Concentration [pg/ μ l] : 75
Used Upper Marker for Quantitation
Standard Curve Fit is Point to Point
Show Data Aligned to Lower and Upper Marker

Integrator Settings

Integration Start Time [s] : 33.05
Integration End Time [s] : 137
Slope Threshold : 0.8
Height Threshold [FU] : 5
Area Threshold : 0.1
Width Threshold [s] : 0.6
Baseline Plateau [s] : 0.5

Filter Settings

Filter Width [s] : 0.5
Polynomial Order : 4

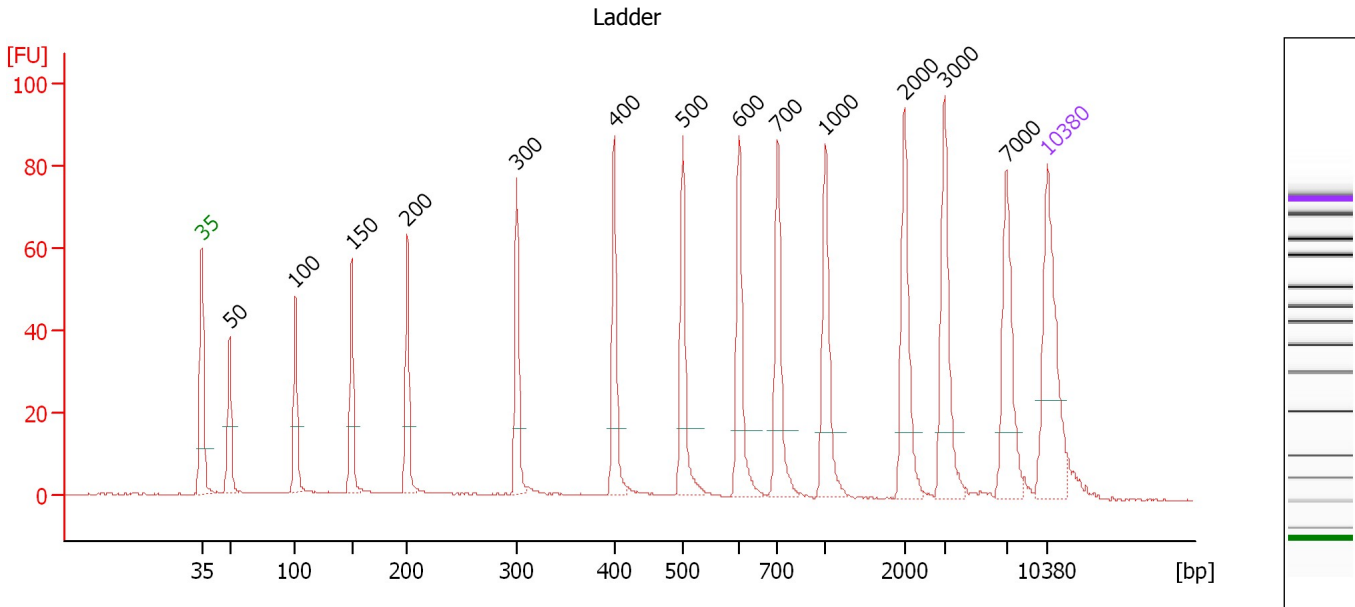
Ladder

Ladder Peak	Size	Area
1	35	160
2	50	210
3	100	208
4	150	221
5	200	242
6	300	270
7	400	305
8	500	306
9	600	336
10	700	321
11	1000	366
12	2000	413
13	3000	411
14	7000	400
15	10380	214

Assay Class: High Sensitivity DNA Assay
 Data Path: C:\...ents and Settings\Bioanalyzer\2013-10-26\2013-10-26_001.xad

Created: 10/26/2013 9:52:41 AM
 Modified: 10/26/2013 10:38:17 AM

Electropherogram Summary



Overall Results for Ladder

Noise: 0.2

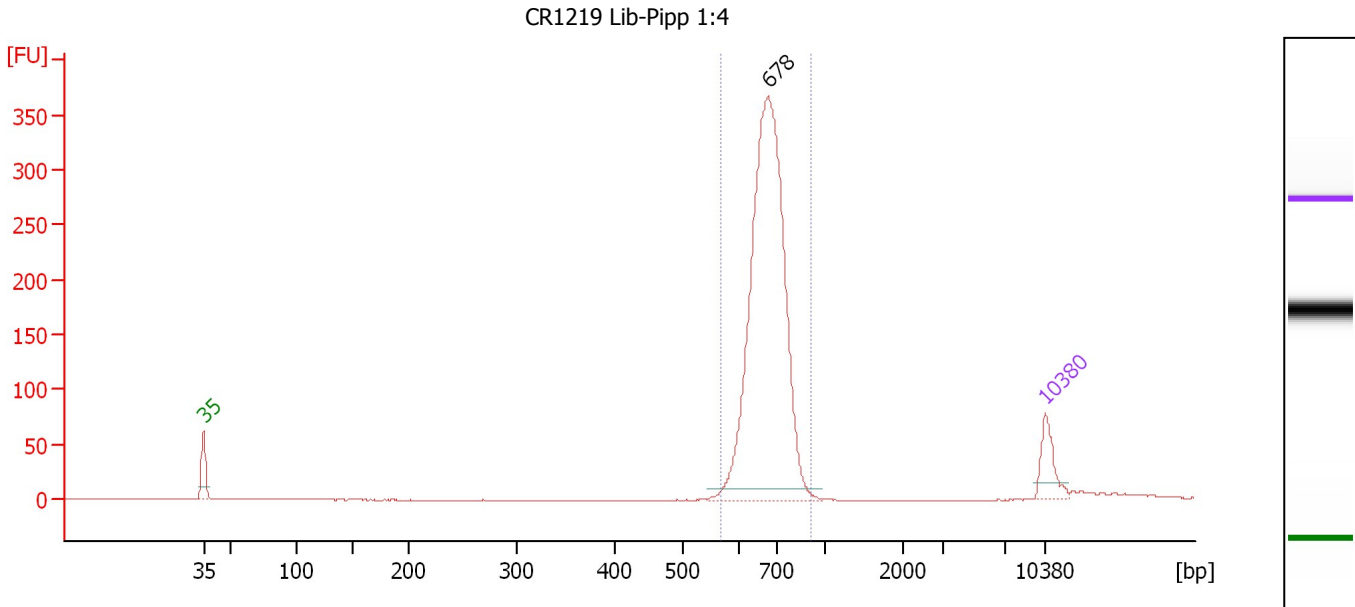
Peak table for Ladder

Peak	Size [bp]	Conc. [pg/μl]	Molarity [pmol/l]	Observations
1	35	125.00	5,411.3	Lower Marker
2	50	150.00	4,545.5	Ladder Peak
3	100	150.00	2,272.7	Ladder Peak
4	150	150.00	1,515.2	Ladder Peak
5	200	150.00	1,136.4	Ladder Peak
6	300	150.00	757.6	Ladder Peak
7	400	150.00	568.2	Ladder Peak
8	500	150.00	454.5	Ladder Peak
9	600	150.00	378.8	Ladder Peak
10	700	150.00	324.7	Ladder Peak
11	1,000	150.00	227.3	Ladder Peak
12	2,000	150.00	113.6	Ladder Peak
13	3,000	150.00	75.8	Ladder Peak
14	7,000	150.00	32.5	Ladder Peak
15	10,380	75.00	10.9	Upper Marker

Assay Class: High Sensitivity DNA Assay
 Data Path: C:\...ents and Settings\Bioanalyzer\2013-10-26\2013-10-26_001.xad

Created: 10/26/2013 9:52:41 AM
 Modified: 10/26/2013 10:38:17 AM

Electropherogram Summary Continued ...



Setpoint Deviations for sample 1 : CR1219 Lib-Pipp 1:4

Height Threshold [FU] : 10

Overall Results for sample 1 : CR1219 Lib-Pipp 1:4

Number of peaks found: 1 Corr. Area 1: 1,376.4
 Noise: 0.2

Peak table for sample 1 : CR1219 Lib-Pipp 1:4

Peak	Size [bp]	Conc. [pg/μl]	Molarity [pmol/l]	Observations
1	35	125.00	5,411.3	Lower Marker
2	678	1,599.56	3,576.3	
3	10,380	75.00	10.9	Upper Marker

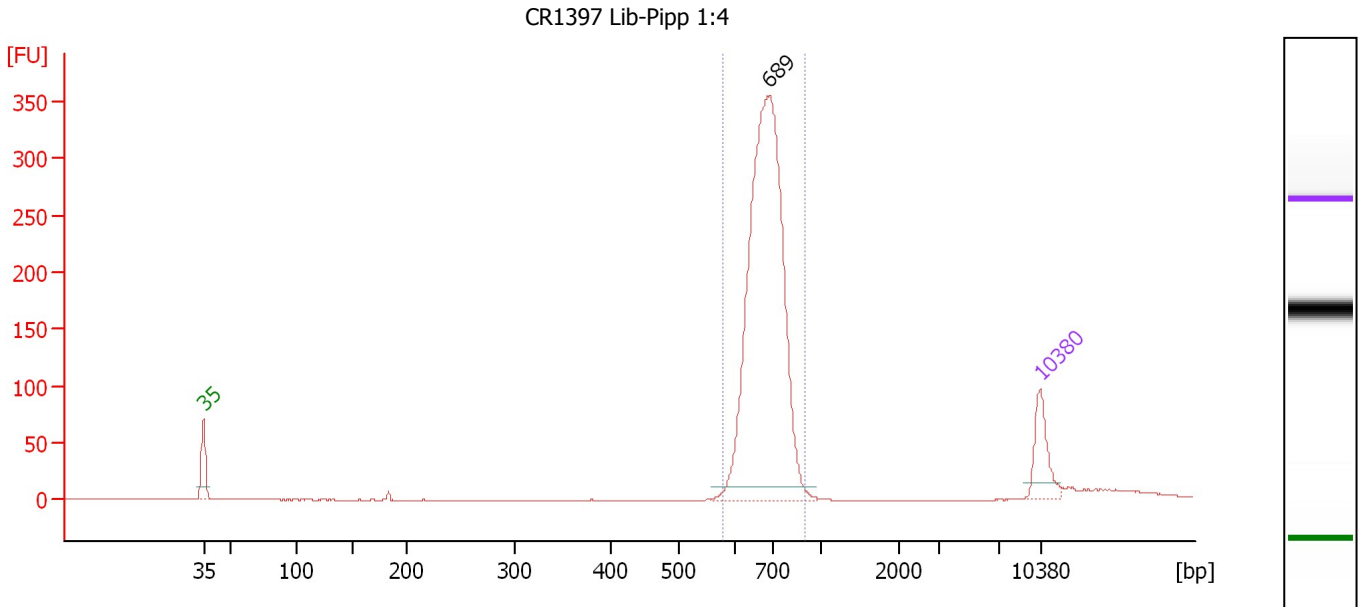
Region table for sample 1 : CR1219 Lib-Pipp 1:4

From [bp]	To [bp]	Average Size [bp]	Molarity [pmol/l]	Conc. [pg/μl]	Corr. Area	% of Total	Size distribution in CV [%]	Color
569	912	683	3,482.6	1,563.37	1,376.4	97	7.8	Blue

Assay Class: High Sensitivity DNA Assay
 Data Path: C:\...ents and Settings\Bioanalyzer\2013-10-26\2013-10-26_001.xad

Created: 10/26/2013 9:52:41 AM
 Modified: 10/26/2013 10:38:17 AM

Electropherogram Summary Continued ...



Setpoint Deviations for sample 2 : CR1397 Lib-Pipp 1:4

Height Threshold [FU] : 12

Overall Results for sample 2 : CR1397 Lib-Pipp 1:4

Number of peaks found: 1 Corr. Area 1: 1,363.5
 Noise: 0.1

Peak table for sample 2 : CR1397 Lib-Pipp 1:4

Peak	Size [bp]	Conc. [pg/μl]	Molarity [pmol/l]	Observations
1	35	125.00	5,411.3	Lower Marker
2	689	1,278.87	2,813.1	
3	10,380	75.00	10.9	Upper Marker

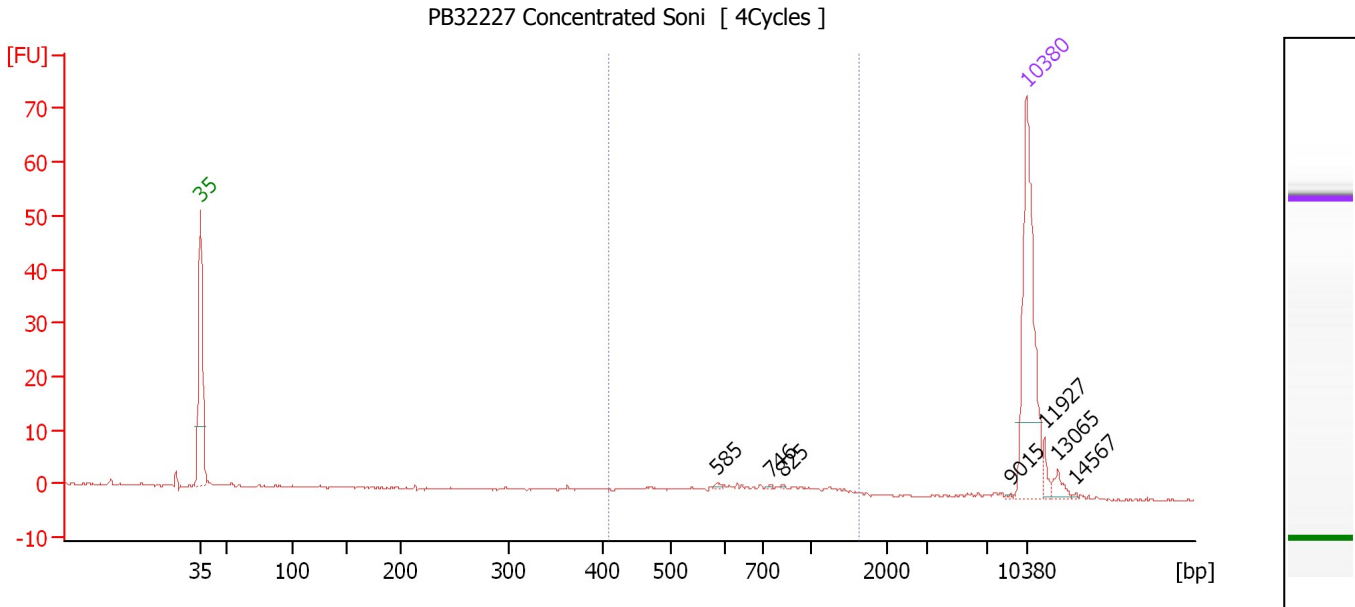
Region table for sample 2 : CR1397 Lib-Pipp 1:4

From [bp]	To [bp]	Average Size [bp]	Molarity [pmol/l]	Conc. [pg/μl]	Corr. Area	% of Total	Size distribution in CV [%]	Color
578	900	689	2,742.0	1,240.93	1,363.5	96	7.9	Blue

Assay Class: High Sensitivity DNA Assay
 Data Path: C:\...ents and Settings\Bioanalyzer\2013-10-26\2013-10-26_001.xad

Created: 10/26/2013 9:52:41 AM
 Modified: 10/26/2013 10:38:17 AM

Electropherogram Summary Continued ...



Setpoint Deviations for sample 3 : PB32227 Concentrated Soni

Height Threshold [FU] : 0.5

Overall Results for sample 3 : PB32227 Concentrated Soni

Number of peaks found: 7 Corr. Area 1: 23.1
 Noise: 0.1

Peak table for sample 3 : PB32227 Concentrated Soni

Peak	Size [bp]	Conc. [pg/μl]	Molarity [pmol/l]	Observations
1	35	125.00	5,411.3	Lower Marker
2	585	1.12	2.9	
3	746	0.55	1.1	
4	825	0.46	0.8	
5	9,015	0.32	0.1	
6	10,380	75.00	10.9	Upper Marker
7	11,927	0.00	0.0	
8	13,065	0.00	0.0	
9	14,567	0.00	0.0	

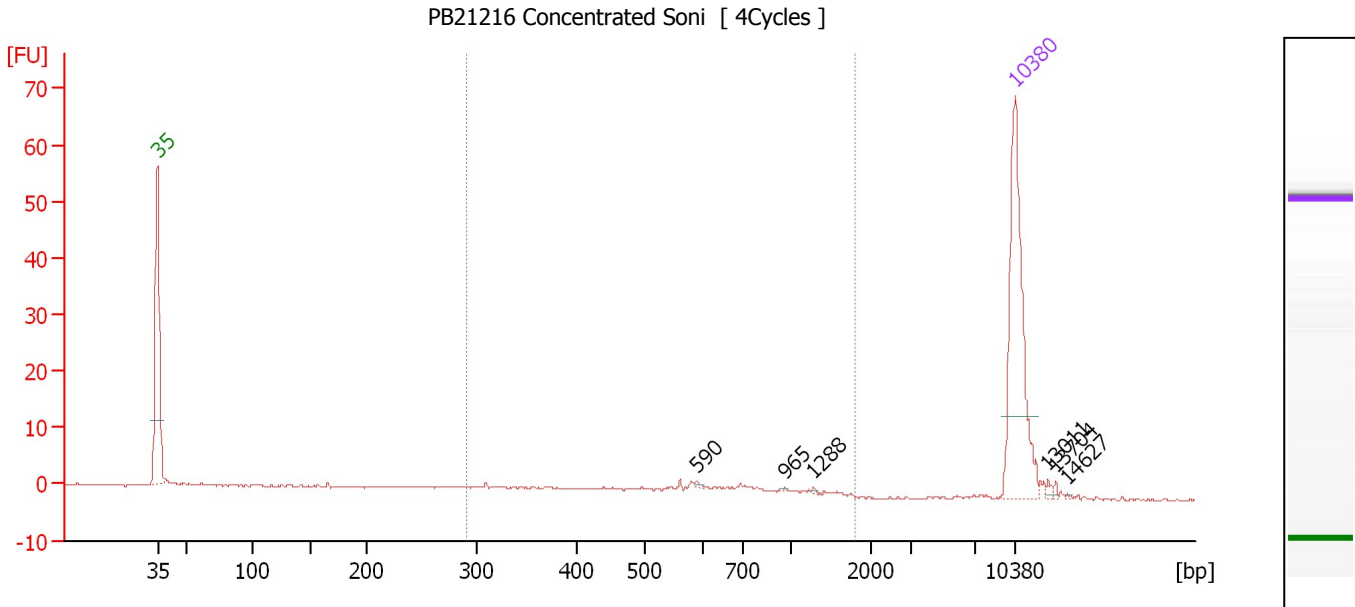
Region table for sample 3 : PB32227 Concentrated Soni

From [bp]	To [bp]	Average Size [bp]	Molarity [pmol/l]	Conc. [pg/μl]	Corr. Area	% of Total	Size distribution in CV [%]	Color
408	1,651	771	71.0	30.95	23.1	51	38.3	Blue

Assay Class: High Sensitivity DNA Assay
 Data Path: C:\...ents and Settings\Bioanalyzer\2013-10-26\2013-10-26_001.xad

Created: 10/26/2013 9:52:41 AM
 Modified: 10/26/2013 10:38:17 AM

Electropherogram Summary Continued ...



Setpoint Deviations for sample 4 : PB21216 Concentrated Soni

Height Threshold [FU] : 0.5

Overall Results for sample 4 : PB21216 Concentrated Soni

Number of peaks found: 6 Corr. Area 1: 25.9
 Noise: 0.1

Peak table for sample 4 : PB21216 Concentrated Soni

Peak	Size [bp]	Conc. [pg/μl]	Molarity [pmol/l]	Observations
1	35	125.00	5,411.3	Lower Marker
2	590	0.81	2.1	
3	965	0.39	0.6	
4	1,288	0.45	0.5	
5	10,380	75.00	10.9	Upper Marker
6	13,011	0.00	0.0	
7	13,704	0.00	0.0	
8	14,627	0.00	0.0	

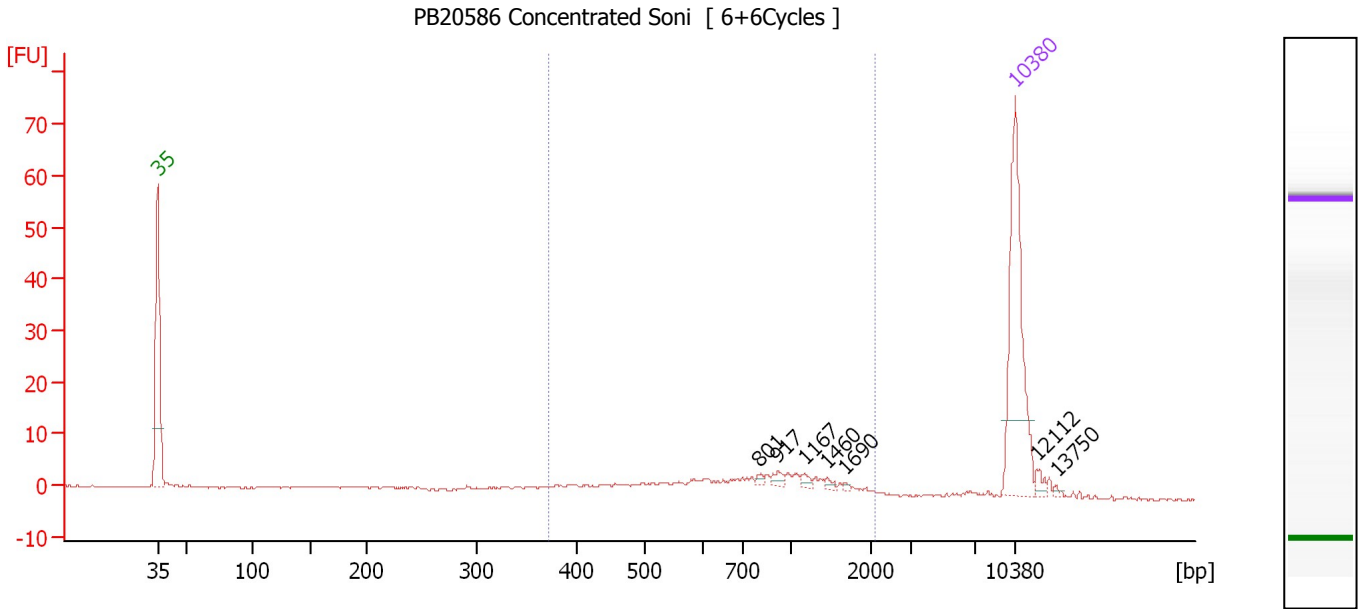
Region table for sample 4 : PB21216 Concentrated Soni

From [bp]	To [bp]	Average Size [bp]	Molarity [pmol/l]	Conc. [pg/μl]	Corr. Area	% of Total	Size distribution in CV [%]	Color
290	1,820	637	101.1	34.00	25.9	60	45.3	Blue

Assay Class: High Sensitivity DNA Assay
 Data Path: C:\...ents and Settings\Bioanalyzer\2013-10-26\2013-10-26_001.xad

Created: 10/26/2013 9:52:41 AM
 Modified: 10/26/2013 10:38:17 AM

Electropherogram Summary Continued ...



Setpoint Deviations for sample 5 : PB20586 Concentrated Soni

Height Threshold [FU] : 1

Overall Results for sample 5 : PB20586 Concentrated Soni

Number of peaks found: 7 Corr. Area 1: 68.7
 Noise: 0.1

Peak table for sample 5 : PB20586 Concentrated Soni

Peak	Size [bp]	Conc. [pg/μl]	Molarity [pmol/l]	Observations
1	35	125.00	5,411.3	Lower Marker
2	801	1.65	3.1	
3	917	3.27	5.4	
4	1,167	2.64	3.4	
5	1,460	1.83	1.9	
6	1,690	0.96	0.9	
7	10,380	75.00	10.9	Upper Marker
8	12,112	0.00	0.0	
9	13,750	0.00	0.0	

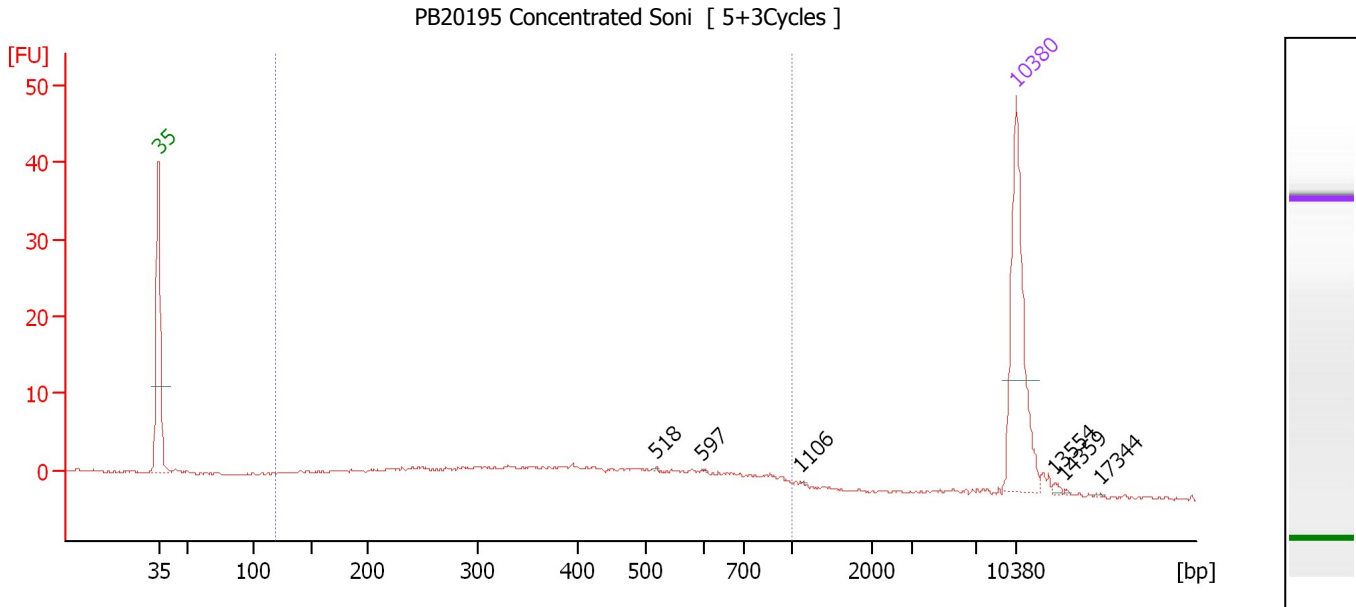
Region table for sample 5 : PB20586 Concentrated Soni

From [bp]	To [bp]	Average Size [bp]	Molarity [pmol/l]	Conc. [pg/μl]	Corr. Area	% of Total	Size distribution in CV [%]	Color
373	2,119	869	184.7	82.81	68.7	71	46.6	Blue

Assay Class: High Sensitivity DNA Assay
 Data Path: C:\...ents and Settings\Bioanalyzer\2013-10-26\2013-10-26_001.xad

Created: 10/26/2013 9:52:41 AM
 Modified: 10/26/2013 10:38:17 AM

Electropherogram Summary Continued ...



Setpoint Deviations for sample 6 : PB20195 Concentrated Soni

Height Threshold [FU] : 0.2

Overall Results for sample 6 : PB20195 Concentrated Soni

Number of peaks found: 6 Corr. Area 1: 95.9
 Noise: 0.1

Peak table for sample 6 : PB20195 Concentrated Soni

Peak	Size [bp]	Conc. [pg/μl]	Molarity [pmol/l]	Observations
1	35	125.00	5,411.3	Lower Marker
2	518	0.43	1.3	
3	597	0.29	0.7	
4	1,106	0.22	0.3	
5	10,380	75.00	10.9	Upper Marker
6	13,554	0.00	0.0	
7	14,359	0.00	0.0	
8	17,344	0.00	0.0	

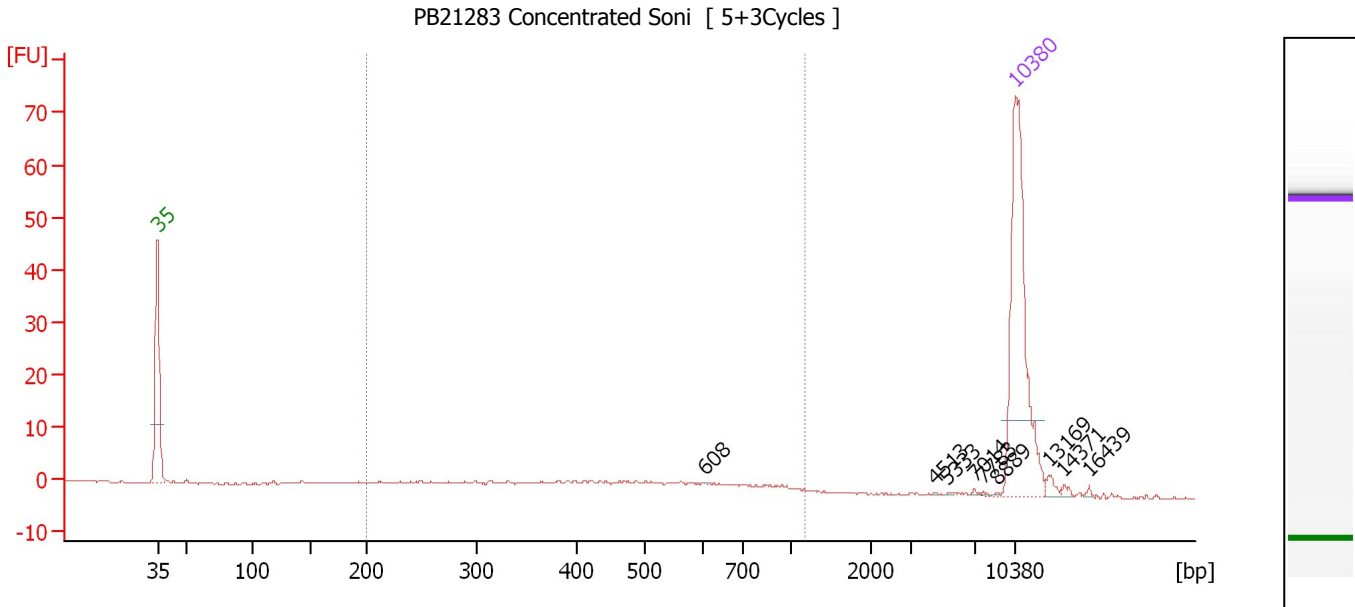
Region table for sample 6 : PB20195 Concentrated Soni

From [bp]	To [bp]	Average Size [bp]	Molarity [pmol/l]	Conc. [pg/μl]	Corr. Area	% of Total	Size distribution in CV [%]	Color
120	1,000	432	1,025.2	211.66	95.9	84	44.2	Blue

Assay Class: High Sensitivity DNA Assay
 Data Path: C:\...ents and Settings\Bioanalyzer\2013-10-26\2013-10-26_001.xad

Created: 10/26/2013 9:52:41 AM
 Modified: 10/26/2013 10:38:17 AM

Electropherogram Summary Continued ...



Setpoint Deviations for sample 7 : PB21283 Concentrated Soni

Height Threshold [FU] : 0.2

Overall Results for sample 7 : PB21283 Concentrated Soni

Number of peaks found: 9 Corr. Area 1: 55.7
 Noise: 0.1

Peak table for sample 7 : PB21283 Concentrated Soni

Peak	Size [bp]	Conc. [pg/μl]	Molarity [pmol/l]	Observations
1	35	125.00	5,411.3	Lower Marker
2	608	0.15	0.4	
3	4,513	0.17	0.1	
4	5,333	0.23	0.1	
5	7,014	0.32	0.1	
6	7,783	0.32	0.1	
7	8,889	0.24	0.0	
8	10,380	75.00	10.9	Upper Marker
9	13,169	0.00	0.0	
10	14,371	0.00	0.0	
11	16,439	0.00	0.0	

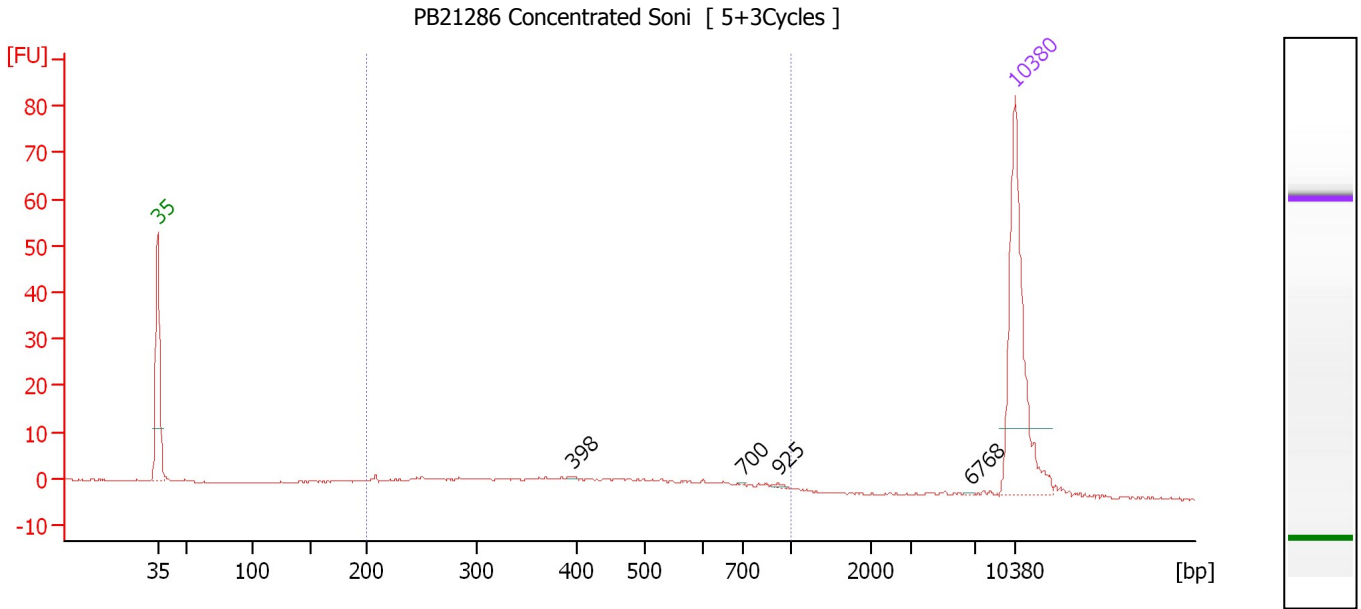
Region table for sample 7 : PB21283 Concentrated Soni

From [bp]	To [bp]	Average Size [bp]	Molarity [pmol/l]	Conc. [pg/μl]	Corr. Area	% of Total	Size distribution in CV [%]	Color
200	1,185	492	249.4	64.22	55.7	73	41.1	Blue

Assay Class: High Sensitivity DNA Assay
 Data Path: C:\...ents and Settings\Bioanalyzer\2013-10-26\2013-10-26_001.xad

Created: 10/26/2013 9:52:41 AM
 Modified: 10/26/2013 10:38:17 AM

Electropherogram Summary Continued ...



Setpoint Deviations for sample 8 : PB21286 Concentrated Soni

Height Threshold [FU] : 0.2

Overall Results for sample 8 : PB21286 Concentrated Soni

Number of peaks found: 4 Corr. Area 1: 79.8
 Noise: 0.2

Peak table for sample 8 : PB21286 Concentrated Soni

Peak	Size [bp]	Conc. [pg/μl]	Molarity [pmol/l]	Observations
1	35	125.00	5,411.3	Lower Marker
2	398	0.50	1.9	
3	700	0.24	0.5	
4	925	0.89	1.5	
5	6,768	0.21	0.0	
6	10,380	75.00	10.9	Upper Marker

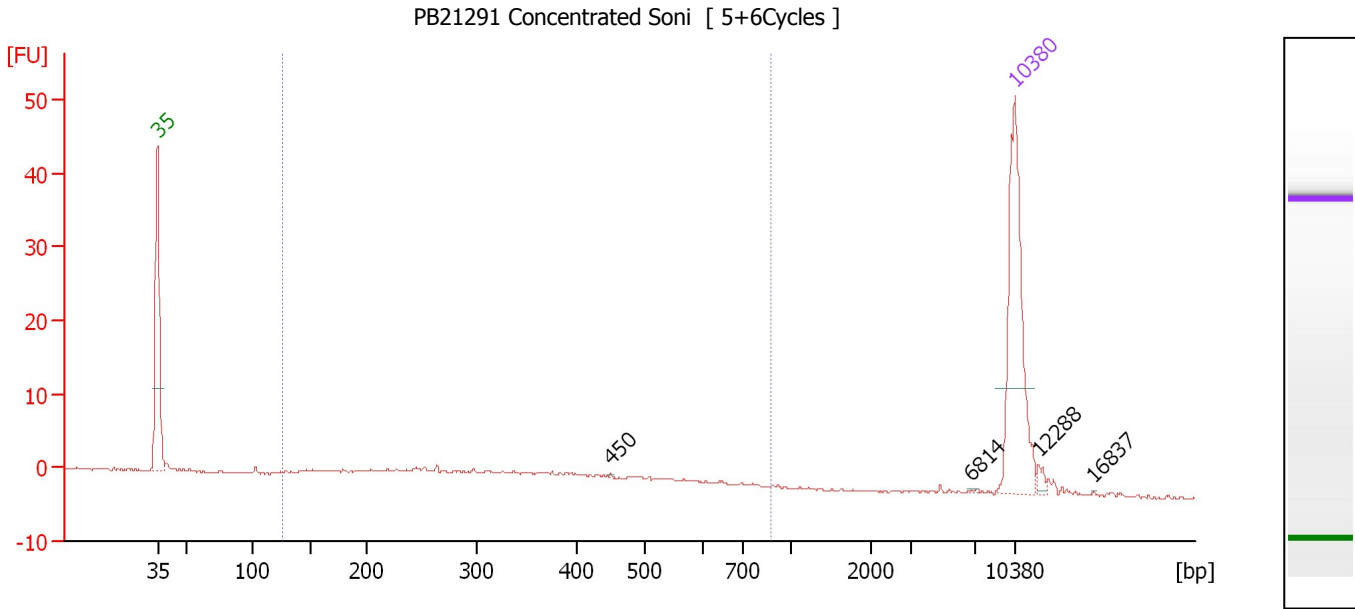
Region table for sample 8 : PB21286 Concentrated Soni

From [bp]	To [bp]	Average Size [bp]	Molarity [pmol/l]	Conc. [pg/μl]	Corr. Area	% of Total	Size distribution in CV [%]	Color
200	1,000	453	373.3	90.58	79.8	82	39.3	Blue

Assay Class: High Sensitivity DNA Assay
 Data Path: C:\...ents and Settings\Bioanalyzer\2013-10-26\2013-10-26_001.xad

Created: 10/26/2013 9:52:41 AM
 Modified: 10/26/2013 10:38:17 AM

Electropherogram Summary Continued ...



Setpoint Deviations for sample 9 : PB21291 Concentrated Soni

Height Threshold [FU] : 0.5

Overall Results for sample 9 : PB21291 Concentrated Soni

Number of peaks found: 4 Corr. Area 1: 51.3
 Noise: 0.1

Peak table for sample 9 : PB21291 Concentrated Soni

Peak	Size [bp]	Conc. [pg/μl]	Molarity [pmol/l]	Observations
1	35	125.00	5,411.3	Lower Marker
2	450	0.40	1.3	
3	6,814	0.47	0.1	
4	10,380	75.00	10.9	Upper Marker
5	12,288	0.00	0.0	
6	16,837	0.00	0.0	

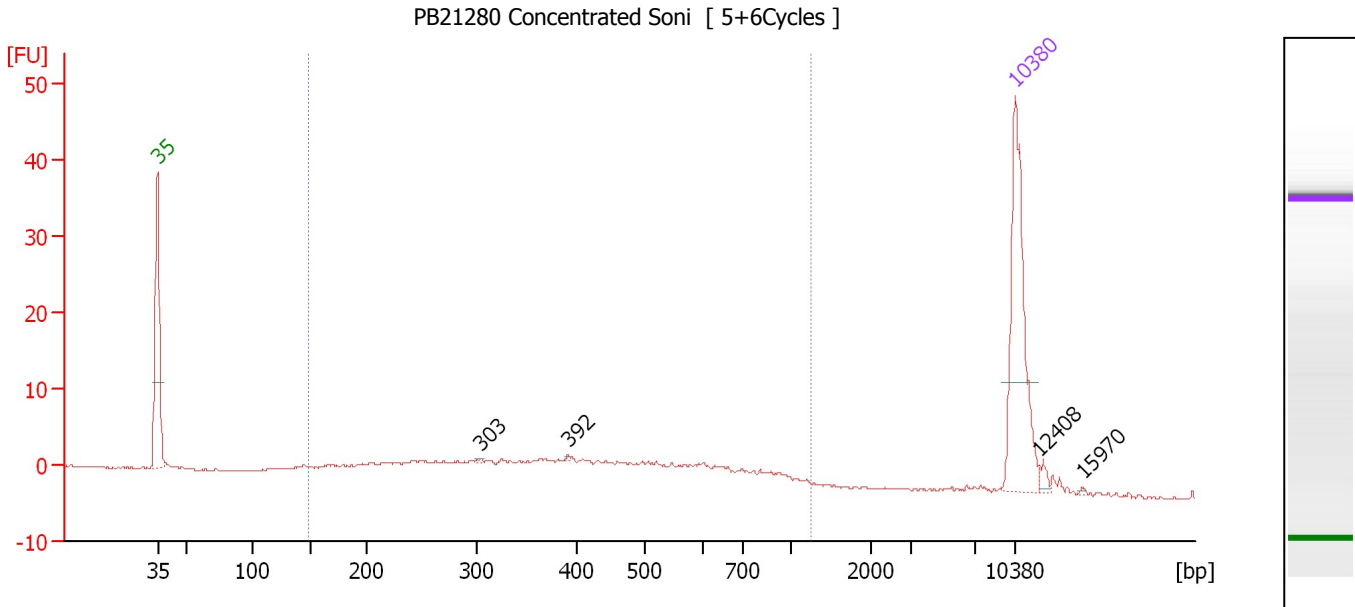
Region table for sample 9 : PB21291 Concentrated Soni

From [bp]	To [bp]	Average Size [bp]	Molarity [pmol/l]	Conc. [pg/μl]	Corr. Area	% of Total	Size distribution in CV [%]	Color
126	875	351	565.5	101.40	51.3	73	40.6	Blue

Assay Class: High Sensitivity DNA Assay
 Data Path: C:\...ents and Settings\Bioanalyzer\2013-10-26\2013-10-26_001.xad

Created: 10/26/2013 9:52:41 AM
 Modified: 10/26/2013 10:38:17 AM

Electropherogram Summary Continued ...



Setpoint Deviations for sample 10 : PB21280 Concentrated Soni

Height Threshold [FU] : 0.5

Overall Results for sample 10 : PB21280 Concentrated Soni

Number of peaks found: 4 Corr. Area 1: 103.7
 Noise: 0.1

Peak table for sample 10 : PB21280 Concentrated Soni

Peak	Size [bp]	Conc. [pg/μl]	Molarity [pmol/l]	Observations
1	35	125.00	5,411.3	Lower Marker
2	303	0.65	3.2	
3	392	0.64	2.5	
4	10,380	75.00	10.9	Upper Marker
5	12,408	0.00	0.0	
6	15,970	0.00	0.0	

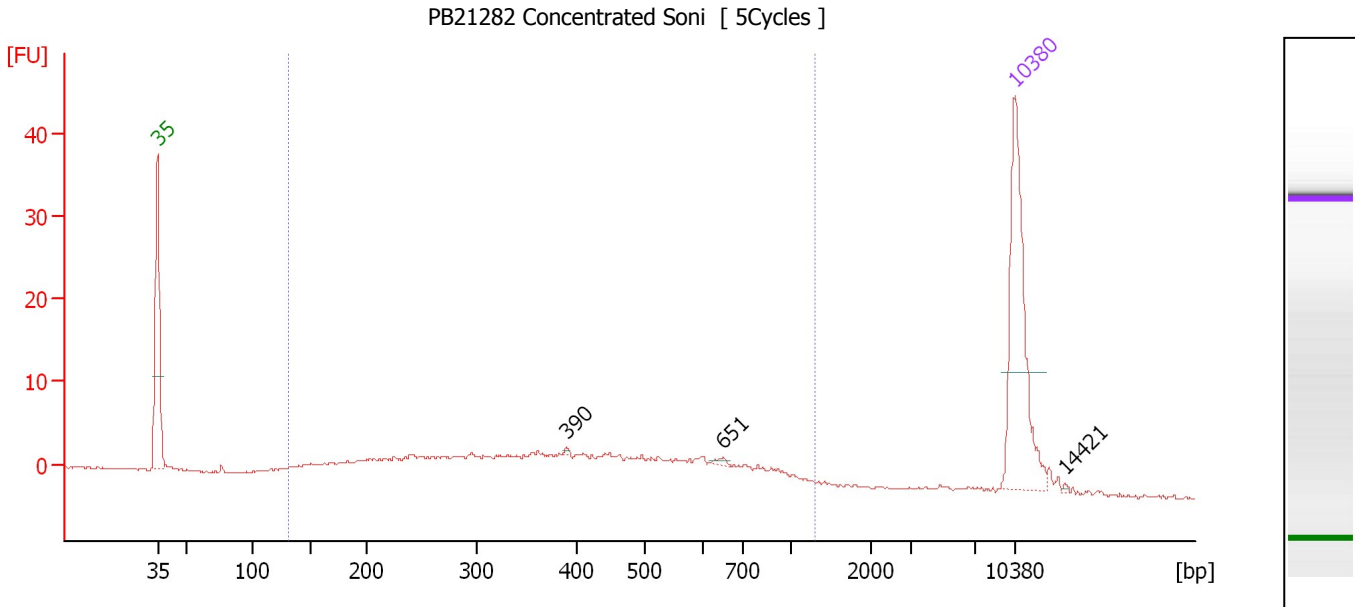
Region table for sample 10 : PB21280 Concentrated Soni

From [bp]	To [bp]	Average Size [bp]	Molarity [pmol/l]	Conc. [pg/μl]	Corr. Area	% of Total	Size distribution in CV [%]	Color
148	1,260	446	936.6	206.92	103.7	90	45.3	Blue

Assay Class: High Sensitivity DNA Assay
 Data Path: C:\...ents and Settings\Bioanalyzer\2013-10-26\2013-10-26_001.xad

Created: 10/26/2013 9:52:41 AM
 Modified: 10/26/2013 10:38:17 AM

Electropherogram Summary Continued ...



Setpoint Deviations for sample 11 : PB21282 Concentrated Soni

Height Threshold [FU] : 0.5

Overall Results for sample 11 : PB21282 Concentrated Soni

Number of peaks found: 3 Corr. Area 1: 139.6
 Noise: 0.1

Peak table for sample 11 : PB21282 Concentrated Soni

Peak	Size [bp]	Conc. [pg/µl]	Molarity [pmol/l]	Observations
1	35	125.00	5,411.3	Lower Marker
2	390	0.96	3.7	
3	651	1.65	3.8	
4	10,380	75.00	10.9	Upper Marker
5	14,421	0.00	0.0	

Region table for sample 11 : PB21282 Concentrated Soni

From [bp]	To [bp]	Average Size [bp]	Molarity [pmol/l]	Conc. [pg/µl]	Corr. Area	% of Total	Size distribution in CV [%]	Color
131	1,314	440	1,340.6	281.10	139.6	91	47.8	Blue

Assay Class: High Sensitivity DNA Assay
Data Path: C:\...ents and Settings\Bioanalyzer\2013-10-26\2013-10-26_001.xad

Created: 10/26/2013 9:52:41 AM
Modified: 10/26/2013 10:38:17 AM

Gel Image

