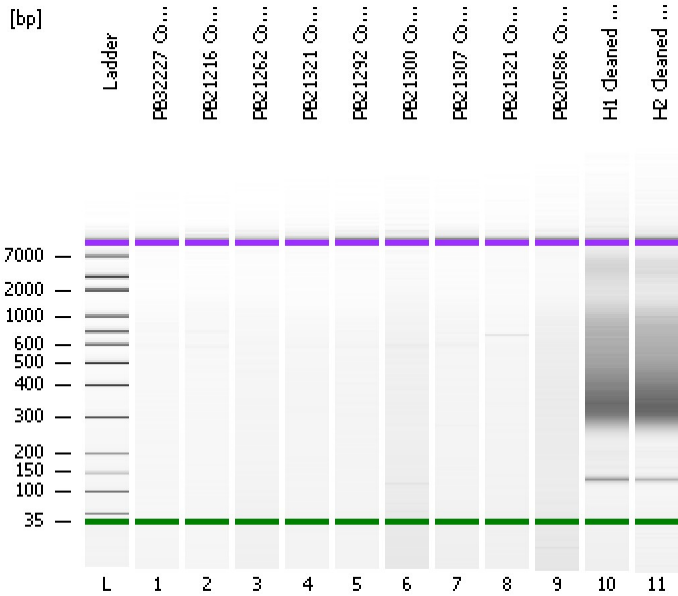


Assay Class: High Sensitivity DNA Assay  
Data Path: C:\...ents and Settings\Bioanalyzer\2013-10-26\2013-10-26\_002.xad

Created: 10/26/2013 1:34:31 PM  
Modified: 10/26/2013 2:17:11 PM

**Electrophoresis File Run Summary**



Instrument Information:

Instrument Name: DE13701086      Firmware: C.01.069  
Serial#: DE13701086      Type: G2938B

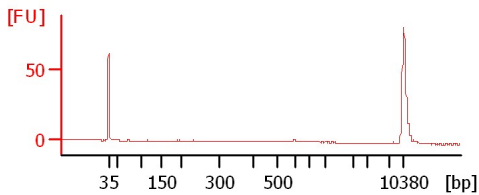
Assay Information:

Assay Origin Path: C:\Program Files\Agilent\2100 bioanalyzer\2100 expert\assays\dsDNA\High Sensitivity DNA.xsy  
Assay Class: High Sensitivity DNA Assay  
Version: 1.03  
Assay Comments: Copyright © 2003-2010 Agilent Technologies

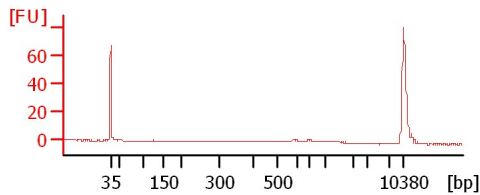
Chip Information:

Chip Lot #:   
Reagent Kit Lot #:   
Chip Comments:

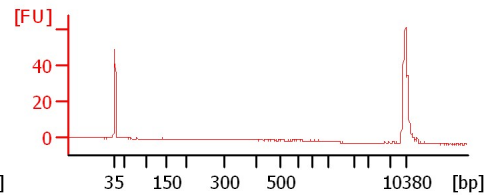
**PB32227 Concentrated Soni**



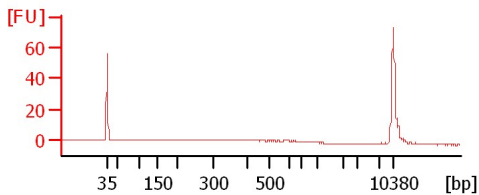
**PB21216 Concentrated Soni**



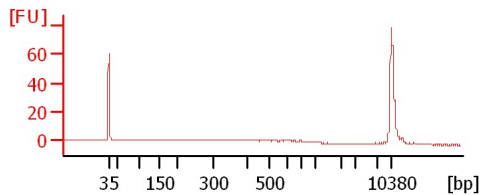
**PB21262 Concentrated Soni**



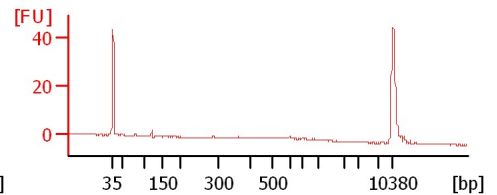
**PB21321 Concentrated Soni**



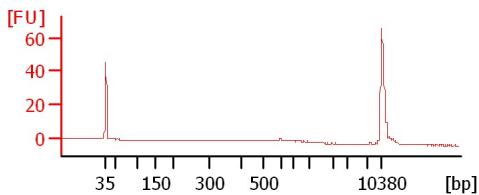
**PB21292 Concentrated Soni**



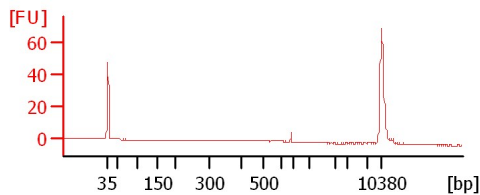
**PB21300 Concentrated Soni**



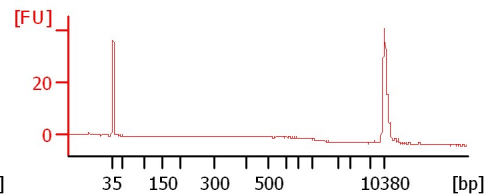
**PB21307 Concentrated Soni**



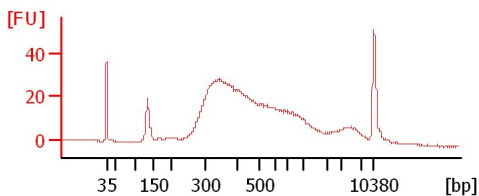
**PB21321 Concentrated Soni**



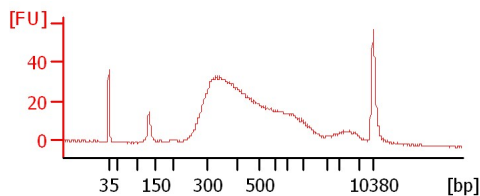
**PB20586 Concentrated Soni**



**H1 Cleaned 1:11**



**H2 Cleaned 1:12**



Assay Class: High Sensitivity DNA Assay  
Data Path: C:\...ents and Settings\Bioanalyzer\2013-10-26\2013-10-26\_002.xad

Created: 10/26/2013 1:34:31 PM  
Modified: 10/26/2013 2:17:11 PM

**Electrophoresis File Run Summary (Chip Summary)**

Sample Name	Sample Comment	Rest. Digest	Status	Observation	Result Label	Result Color
PB32227 Concentrated Soni		<input type="checkbox"/>	✓			
PB21216 Concentrated Soni		<input type="checkbox"/>	✓			
PB21262 Concentrated Soni		<input type="checkbox"/>	✓			
PB21321 Concentrated Soni		<input type="checkbox"/>	✓			
PB21292 Concentrated Soni		<input type="checkbox"/>	✓			
PB21300 Concentrated Soni		<input type="checkbox"/>	✓			
PB21307 Concentrated Soni		<input type="checkbox"/>	✓			
PB21321 Concentrated Soni		<input type="checkbox"/>	✓			
PB20586 Concentrated Soni		<input type="checkbox"/>	✓			
H1 Cleaned 1:11		<input type="checkbox"/>	✓			
H2 Cleaned 1:12		<input type="checkbox"/>	✓			
Ladder		<input type="checkbox"/>	✓			

**Chip Lot #**

**Reagent Kit Lot #**

**Chip Comments :**

Assay Class: High Sensitivity DNA Assay  
Data Path: C:\...ents and Settings\Bioanalyzer\2013-10-26\2013-10-26\_002.xad

Created: 10/26/2013 1:34:31 PM  
Modified: 10/26/2013 2:17:11 PM

**Electrophoresis Assay Details**

**General Analysis Settings**

Number of Available Sample and Ladder Wells (Max.) : 12  
Minimum Visible Range [s] : 32  
Maximum Visible Range [s] : 138  
Start Analysis Time Range [s] : 33  
End Analysis Time Range [s] : 137.5  
Ladder Concentration [pg/μl] : 1950  
Uses Standard Area for Ladder Fragments  
Lower Marker Concentration [pg/μl] : 125  
Upper Marker Concentration [pg/μl] : 75  
Used Upper Marker for Quantitation  
Standard Curve Fit is Point to Point  
Show Data Aligned to Lower and Upper Marker

**Integrator Settings**

Integration Start Time [s] : 33.05  
Integration End Time [s] : 137  
Slope Threshold : 0.8  
Height Threshold [FU] : 5  
Area Threshold : 0.1  
Width Threshold [s] : 0.6  
Baseline Plateau [s] : 0.5

**Filter Settings**

Filter Width [s] : 0.5  
Polynomial Order : 4

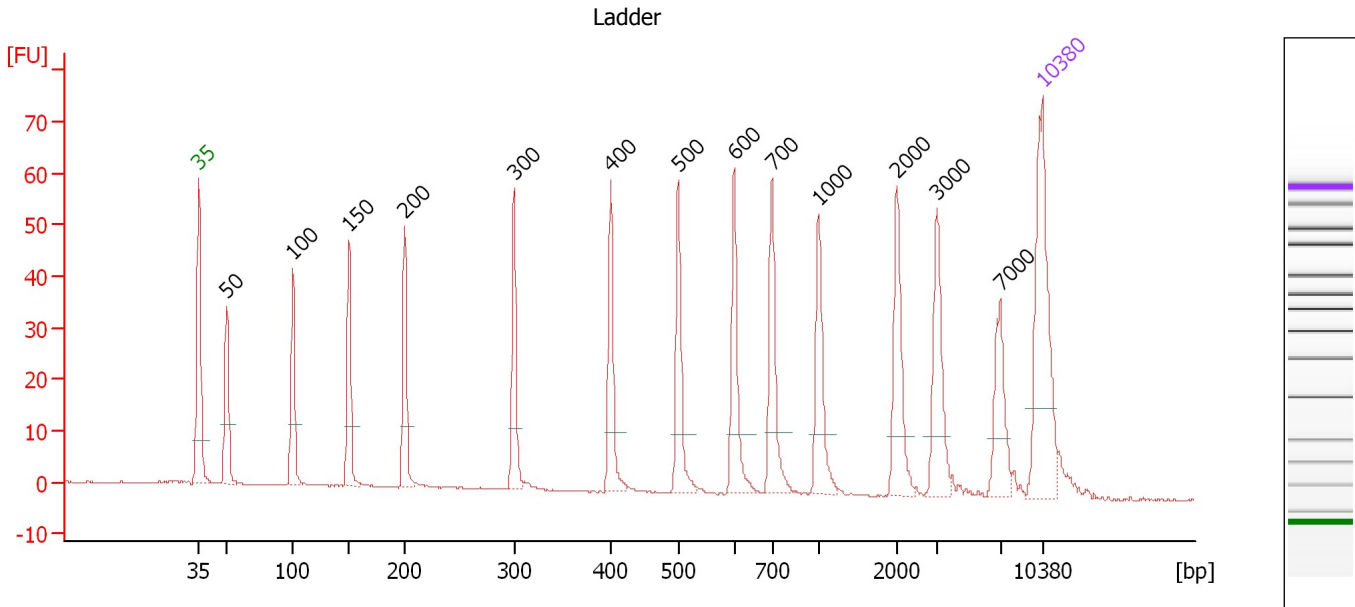
**Ladder**

Ladder Peak	Size	Area
1	35	160
2	50	210
3	100	208
4	150	221
5	200	242
6	300	270
7	400	305
8	500	306
9	600	336
10	700	321
11	1000	366
12	2000	413
13	3000	411
14	7000	400
15	10380	214

Assay Class: High Sensitivity DNA Assay  
 Data Path: C:\...ents and Settings\Bioanalyzer\2013-10-26\2013-10-26\_002.xad

Created: 10/26/2013 1:34:31 PM  
 Modified: 10/26/2013 2:17:11 PM

**Electropherogram Summary**



**Overall Results for Ladder**

Noise: 0.1

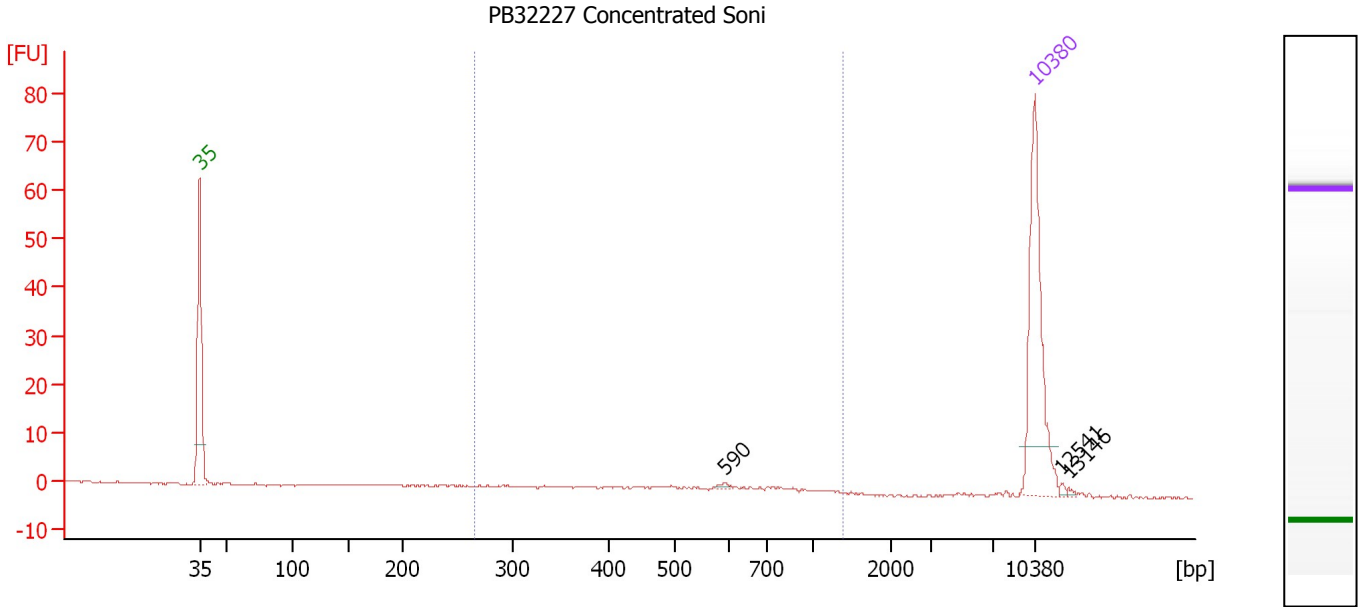
**Peak table for Ladder**

Peak	Size [bp]	Conc. [pg/μl]	Molarity [pmol/l]	Observations
1	35	125.00	5,411.3	Lower Marker
2	50	150.00	4,545.5	Ladder Peak
3	100	150.00	2,272.7	Ladder Peak
4	150	150.00	1,515.2	Ladder Peak
5	200	150.00	1,136.4	Ladder Peak
6	300	150.00	757.6	Ladder Peak
7	400	150.00	568.2	Ladder Peak
8	500	150.00	454.5	Ladder Peak
9	600	150.00	378.8	Ladder Peak
10	700	150.00	324.7	Ladder Peak
11	1,000	150.00	227.3	Ladder Peak
12	2,000	150.00	113.6	Ladder Peak
13	3,000	150.00	75.8	Ladder Peak
14	7,000	150.00	32.5	Ladder Peak
15	10,380	75.00	10.9	Upper Marker

Assay Class: High Sensitivity DNA Assay  
 Data Path: C:\...ents and Settings\Bioanalyzer\2013-10-26\2013-10-26\_002.xad

Created: 10/26/2013 1:34:31 PM  
 Modified: 10/26/2013 2:17:11 PM

**Electropherogram Summary Continued ...**



**Setpoint Deviations for sample 1 : PB32227 Concentrated Soni**

Height Threshold [FU] : 0.5

**Overall Results for sample 1 : PB32227 Concentrated Soni**

Number of peaks found: 3                                      Corr. Area 1: 22.1  
 Noise: 0.1

**Peak table for sample 1 : PB32227 Concentrated Soni**

Peak	Size [bp]	Conc. [pg/µl]	Molarity [pmol/l]	Observations
1	35	125.00	5,411.3	Lower Marker
2	590	1.34	3.4	
3	10,380	75.00	10.9	Upper Marker
4	12,541	0.00	0.0	
5	13,146	0.00	0.0	

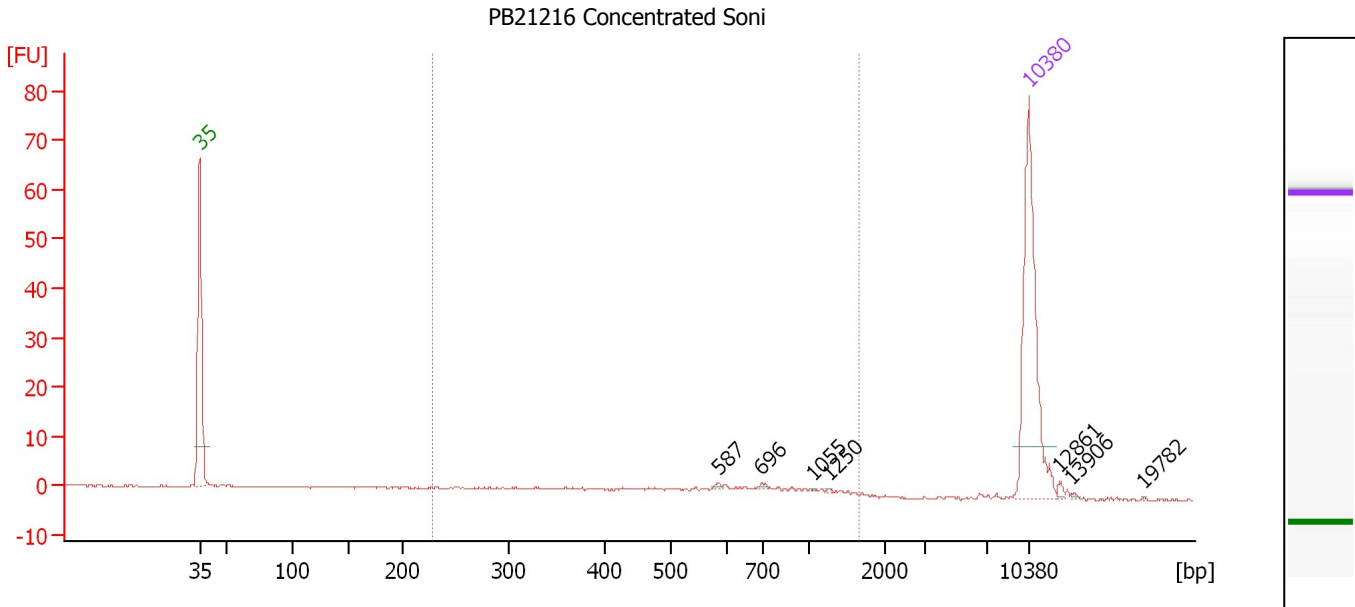
**Region table for sample 1 : PB32227 Concentrated Soni**

From [bp]	To [bp]	Average Size [bp]	Molarity [pmol/l]	Conc. [pg/µl]	Corr. Area	% of Total	Size distribution in CV [%]	Color
265	1,372	573	86.1	27.02	22.1	68	38.0	Blue

Assay Class: High Sensitivity DNA Assay  
 Data Path: C:\...ents and Settings\Bioanalyzer\2013-10-26\2013-10-26\_002.xad

Created: 10/26/2013 1:34:31 PM  
 Modified: 10/26/2013 2:17:11 PM

**Electropherogram Summary Continued ...**



**Setpoint Deviations for sample 2 : PB21216 Concentrated Soni**

Height Threshold [FU] : 0.5

**Overall Results for sample 2 : PB21216 Concentrated Soni**

Number of peaks found: 7                      Corr. Area 1: 38.3  
 Noise: 0.2

**Peak table for sample 2 : PB21216 Concentrated Soni**

Peak	Size [bp]	Conc. [pg/μl]	Molarity [pmol/l]	Observations
1	35	125.00	5,411.3	Lower Marker
2	587	1.12	2.9	
3	696	1.01	2.2	
4	1,055	0.23	0.3	
5	1,250	0.27	0.3	
6	10,380	75.00	10.9	Upper Marker
7	12,861	0.00	0.0	
8	13,906	0.00	0.0	
9	19,782	0.00	0.0	

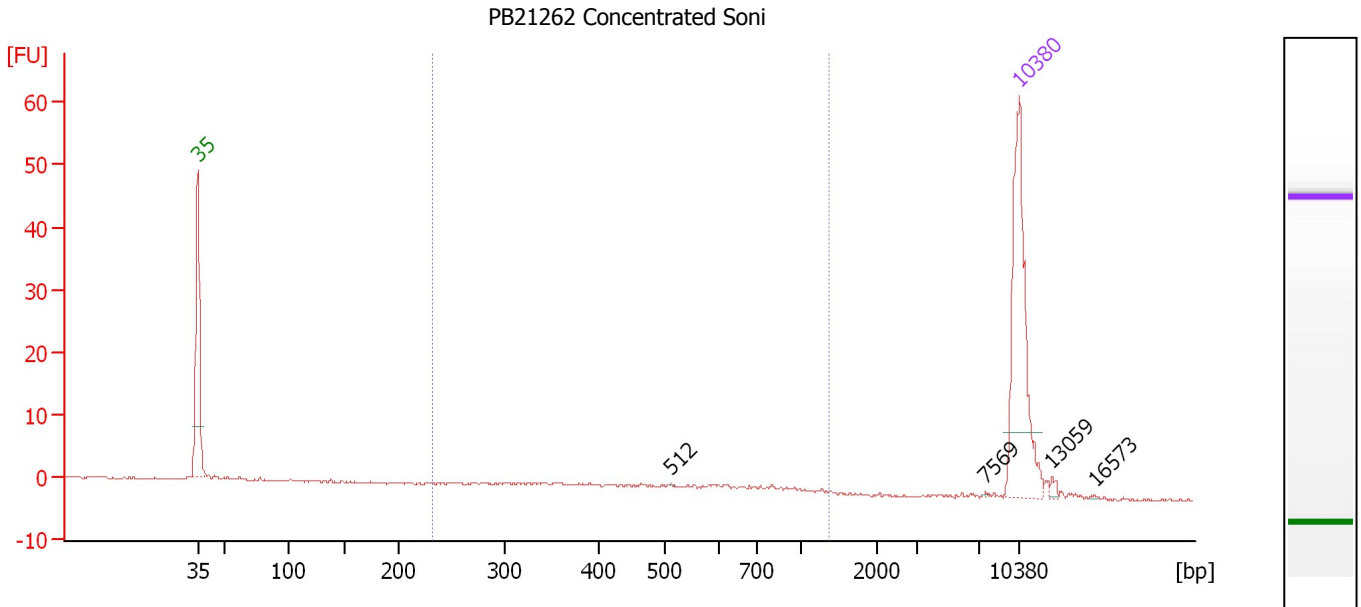
**Region table for sample 2 : PB21216 Concentrated Soni**

From [bp]	To [bp]	Average Size [bp]	Molarity [pmol/l]	Conc. [pg/μl]	Corr. Area	% of Total	Size distribution in CV [%]	Color
229	1,644	623	154.0	46.72	38.3	73	49.1	Blue

Assay Class: High Sensitivity DNA Assay  
 Data Path: C:\...ents and Settings\Bioanalyzer\2013-10-26\2013-10-26\_002.xad

Created: 10/26/2013 1:34:31 PM  
 Modified: 10/26/2013 2:17:11 PM

**Electropherogram Summary Continued ...**



**Setpoint Deviations for sample 3 : PB21262 Concentrated Soni**

Height Threshold [FU] : 0.2

**Overall Results for sample 3 : PB21262 Concentrated Soni**

Number of peaks found: 4                      Corr. Area 1: 14.2  
 Noise: 0.2

**Peak table for sample 3 : PB21262 Concentrated Soni**

Peak	Size [bp]	Conc. [pg/μl]	Molarity [pmol/l]	Observations
1	35	125.00	5,411.3	Lower Marker
2	512	0.22	0.6	
3	7,569	0.33	0.1	
4	10,380	75.00	10.9	Upper Marker
5	13,059	0.00	0.0	
6	16,573	0.00	0.0	

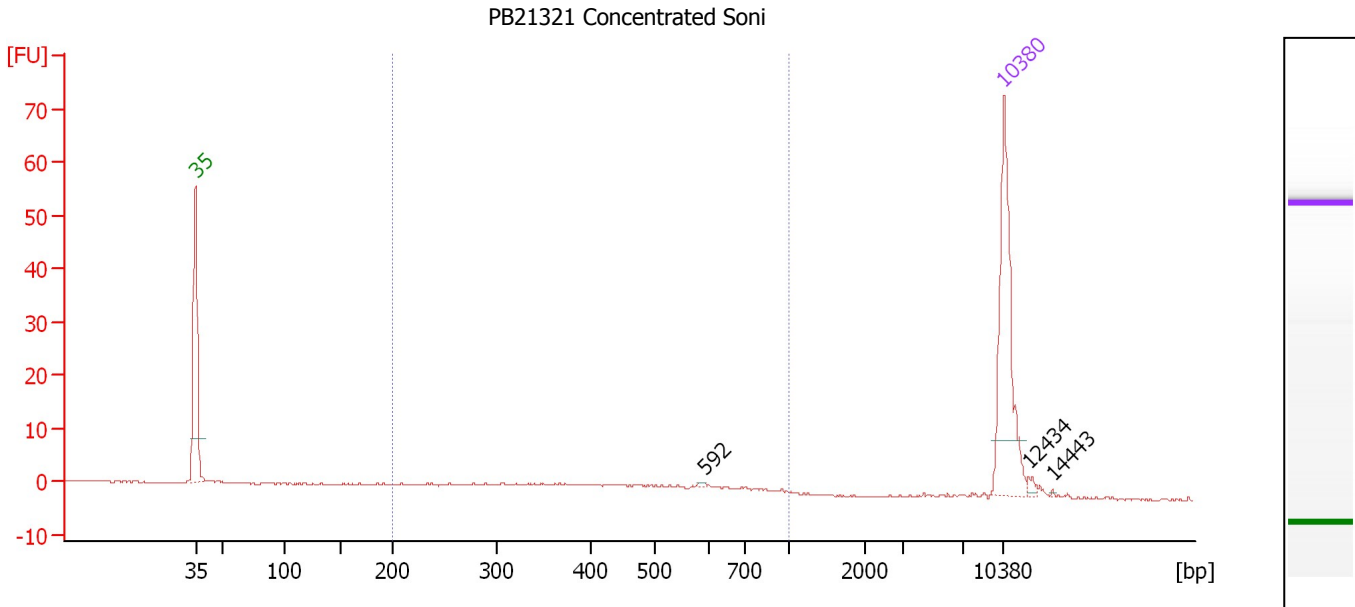
**Region table for sample 3 : PB21262 Concentrated Soni**

From [bp]	To [bp]	Average Size [bp]	Molarity [pmol/l]	Conc. [pg/μl]	Corr. Area	% of Total	Size distribution in CV [%]	Color
232	1,355	521	72.3	20.64	14.2	63	38.1	Blue

Assay Class: High Sensitivity DNA Assay  
 Data Path: C:\...ents and Settings\Bioanalyzer\2013-10-26\2013-10-26\_002.xad

Created: 10/26/2013 1:34:31 PM  
 Modified: 10/26/2013 2:17:11 PM

**Electropherogram Summary Continued ...**



**Setpoint Deviations for sample 4 : PB21321 Concentrated Soni**

Height Threshold [FU] : 0.5

**Overall Results for sample 4 : PB21321 Concentrated Soni**

Number of peaks found: 3                      Corr. Area 1: 36.7  
 Noise: 0.1

**Peak table for sample 4 : PB21321 Concentrated Soni**

Peak	Size [bp]	Conc. [pg/µl]	Molarity [pmol/l]	Observations
1	35	125.00	5,411.3	Lower Marker
2	592	0.83	2.1	
3	10,380	75.00	10.9	Upper Marker
4	12,434	0.00	0.0	
5	14,443	0.00	0.0	

**Region table for sample 4 : PB21321 Concentrated Soni**

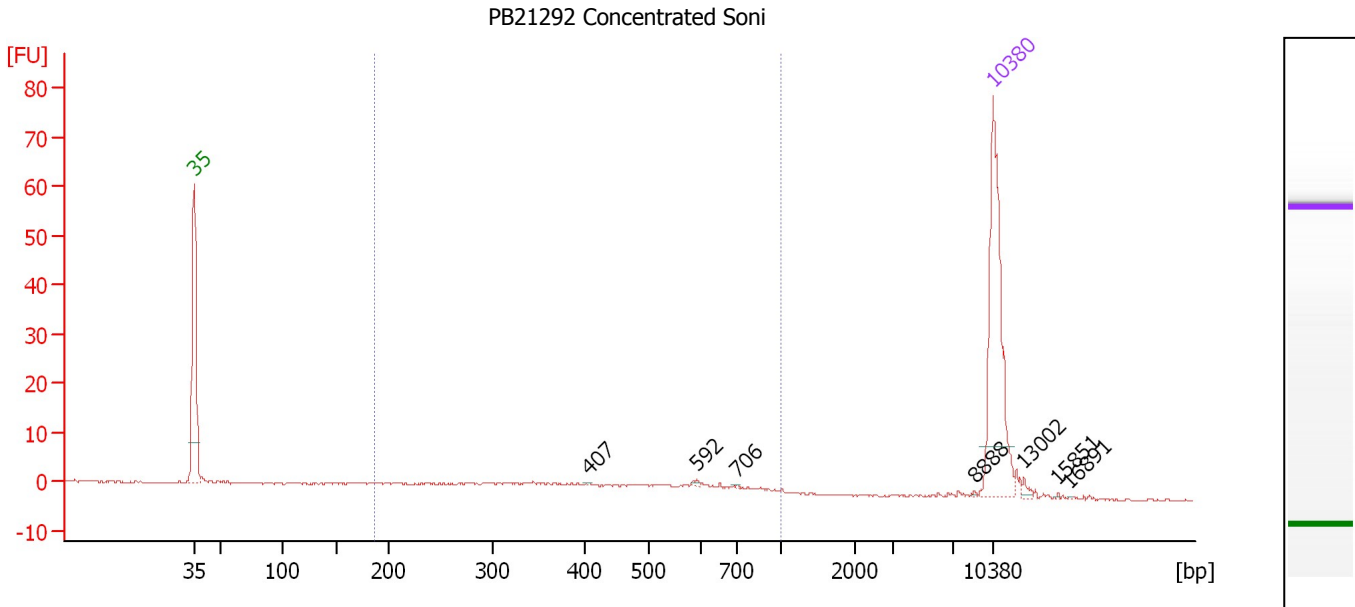
From [bp]	To [bp]	Average Size [bp]	Molarity [pmol/l]	Conc. [pg/µl]	Corr. Area	% of Total	Size distribution in CV [%]	Color
200	1,000	453	219.6	54.17	36.7	65	36.4	Blue



Assay Class: High Sensitivity DNA Assay  
 Data Path: C:\...ents and Settings\Bioanalyzer\2013-10-26\2013-10-26\_002.xad

Created: 10/26/2013 1:34:31 PM  
 Modified: 10/26/2013 2:17:11 PM

**Electropherogram Summary Continued ...**



**Setpoint Deviations for sample 5 : PB21292 Concentrated Soni**

Height Threshold [FU] : 0.5

**Overall Results for sample 5 : PB21292 Concentrated Soni**

Number of peaks found: 7                      Corr. Area 1: 48.7  
 Noise: 0.1

**Peak table for sample 5 : PB21292 Concentrated Soni**

Peak	Size [bp]	Conc. [pg/μl]	Molarity [pmol/l]	Observations
1	35	125.00	5,411.3	Lower Marker
2	407	0.36	1.3	
3	592	1.02	2.6	
4	706	0.46	1.0	
5	8,888	0.37	0.1	
6	10,380	75.00	10.9	Upper Marker
7	13,002	0.00	0.0	
8	15,851	0.00	0.0	
9	16,891	0.00	0.0	

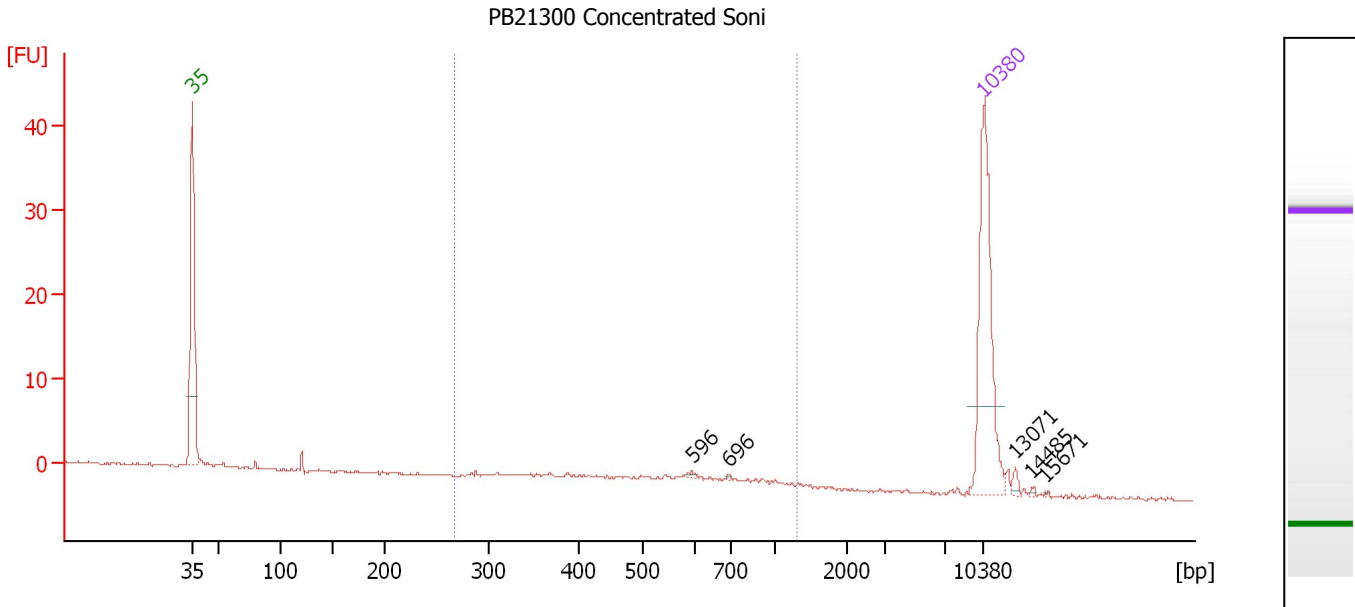
**Region table for sample 5 : PB21292 Concentrated Soni**

From [bp]	To [bp]	Average Size [bp]	Molarity [pmol/l]	Conc. [pg/μl]	Corr. Area	% of Total	Size distribution in CV [%]	Color
187	1,000	459	261.2	63.32	48.7	72	38.5	Blue

Assay Class: High Sensitivity DNA Assay  
 Data Path: C:\...ents and Settings\Bioanalyzer\2013-10-26\2013-10-26\_002.xad

Created: 10/26/2013 1:34:31 PM  
 Modified: 10/26/2013 2:17:11 PM

**Electropherogram Summary Continued ...**



**Setpoint Deviations for sample 6 : PB21300 Concentrated Soni**

Height Threshold [FU] : 0.5

**Overall Results for sample 6 : PB21300 Concentrated Soni**

Number of peaks found: 5                      Corr. Area 1: 19.0  
 Noise: 0.1

**Peak table for sample 6 : PB21300 Concentrated Soni**

Peak	Size [bp]	Conc. [pg/μl]	Molarity [pmol/l]	Observations
1	35	125.00	5,411.3	Lower Marker
2	596	1.20	3.0	
3	696	0.52	1.1	
4	10,380	75.00	10.9	Upper Marker
5	13,071	0.00	0.0	
6	14,485	0.00	0.0	
7	15,671	0.00	0.0	

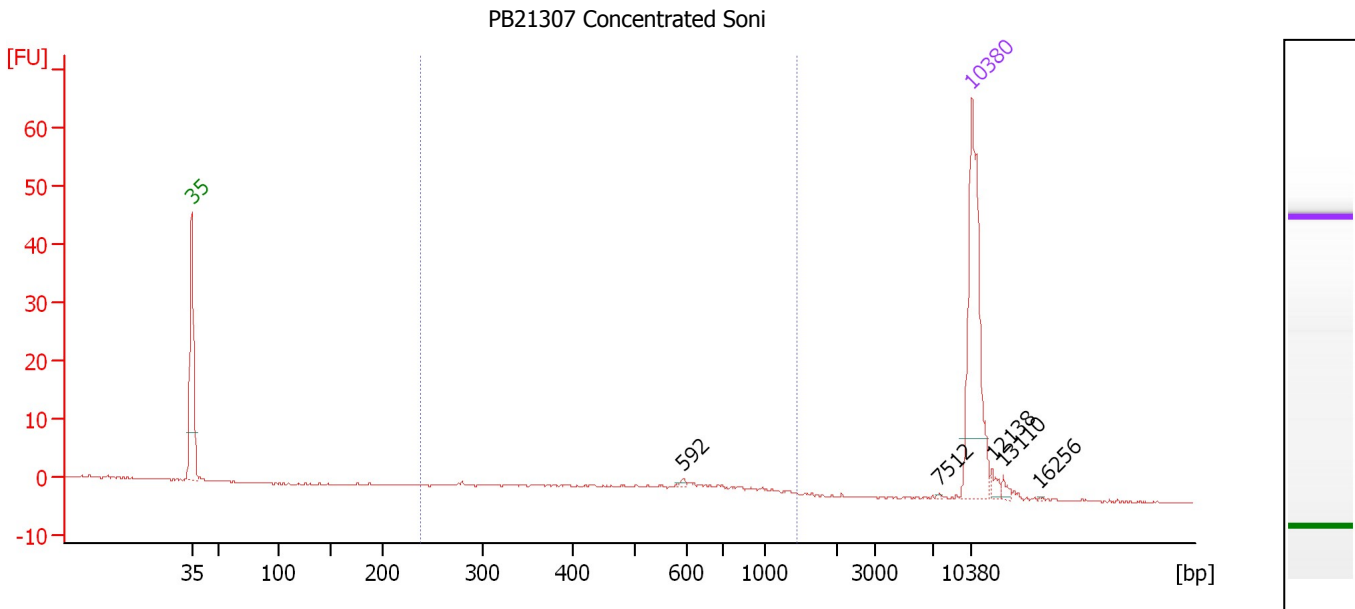
**Region table for sample 6 : PB21300 Concentrated Soni**

From [bp]	To [bp]	Average Size [bp]	Molarity [pmol/l]	Conc. [pg/μl]	Corr. Area	% of Total	Size distribution in CV [%]	Color
267	1,313	581	119.9	38.61	19.0	62	37.3	Blue

Assay Class: High Sensitivity DNA Assay  
 Data Path: C:\...ents and Settings\Bioanalyzer\2013-10-26\2013-10-26\_002.xad

Created: 10/26/2013 1:34:31 PM  
 Modified: 10/26/2013 2:17:11 PM

**Electropherogram Summary Continued ...**



**Setpoint Deviations for sample 7 : PB21307 Concentrated Soni**

Height Threshold [FU] : 0.5

**Overall Results for sample 7 : PB21307 Concentrated Soni**

Number of peaks found: 5                      Corr. Area 1: 20.8  
 Noise: 0.1

**Peak table for sample 7 : PB21307 Concentrated Soni**

Peak	Size [bp]	Conc. [pg/μl]	Molarity [pmol/l]	Observations
1	35	125.00	5,411.3	Lower Marker
2	592	1.21	3.1	
3	7,512	0.42	0.1	
4	10,380	75.00	10.9	Upper Marker
5	12,138	0.00	0.0	
6	13,110	0.00	0.0	
7	16,256	0.00	0.0	

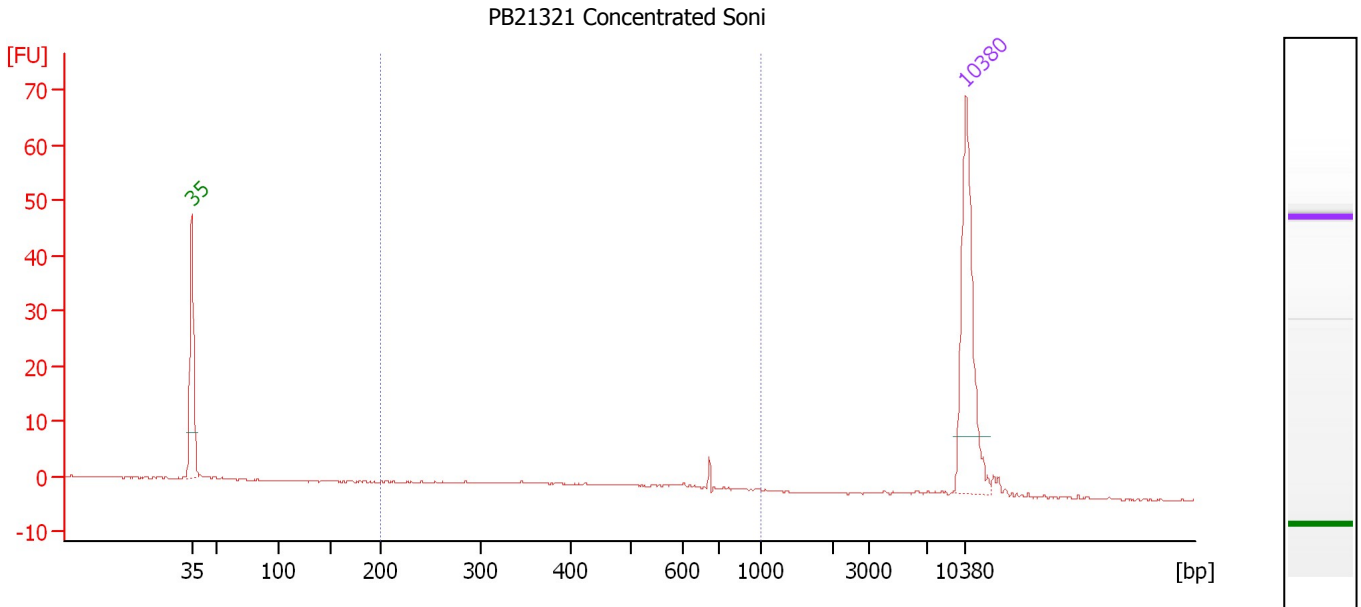
**Region table for sample 7 : PB21307 Concentrated Soni**

From [bp]	To [bp]	Average Size [bp]	Molarity [pmol/l]	Conc. [pg/μl]	Corr. Area	% of Total	Size distribution in CV [%]	Color
237	1,439	601	89.5	29.91	20.8	73	36.3	Blue

Assay Class: High Sensitivity DNA Assay  
 Data Path: C:\...ents and Settings\Bioanalyzer\2013-10-26\2013-10-26\_002.xad

Created: 10/26/2013 1:34:31 PM  
 Modified: 10/26/2013 2:17:11 PM

**Electropherogram Summary Continued ...**



**Setpoint Deviations for sample 8 : PB21321 Concentrated Soni**

Height Threshold [FU] : 0.2

**Overall Results for sample 8 : PB21321 Concentrated Soni**

Number of peaks found: 0                      Corr. Area 1: 28.3  
 Noise: 0.1

**Peak table for sample 8 : PB21321 Concentrated Soni**

Peak	Size [bp]	Conc. [pg/μl]	Molarity [pmol/l]	Observations
1	35	125.00	5,411.3	Lower Marker
2	10,380	75.00	10.9	Upper Marker

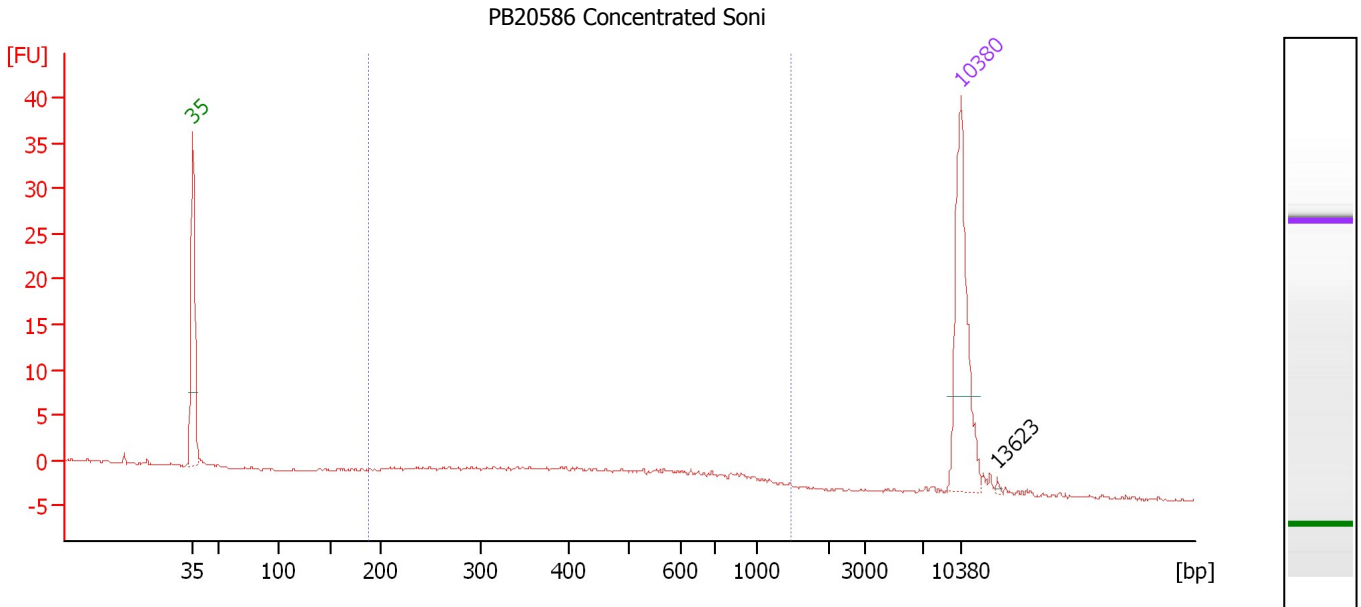
**Region table for sample 8 : PB21321 Concentrated Soni**

From [bp]	To [bp]	Average Size [bp]	Molarity [pmol/l]	Conc. [pg/μl]	Corr. Area	% of Total	Size distribution in CV [%]	Color
200	1,000	465	165.5	41.24	28.3	57	37.8	Blue

Assay Class: High Sensitivity DNA Assay  
 Data Path: C:\...ents and Settings\Bioanalyzer\2013-10-26\2013-10-26\_002.xad

Created: 10/26/2013 1:34:31 PM  
 Modified: 10/26/2013 2:17:11 PM

**Electropherogram Summary Continued ...**



**Setpoint Deviations for sample 9 : PB20586 Concentrated Soni**

Height Threshold [FU] : 0.5

**Overall Results for sample 9 : PB20586 Concentrated Soni**

Number of peaks found: 1                      Corr. Area 1: 42.3  
 Noise: 0.2

**Peak table for sample 9 : PB20586 Concentrated Soni**

Peak	Size [bp]	Conc. [pg/μl]	Molarity [pmol/l]	Observations
1	35	125.00	5,411.3	Lower Marker
2	10,380	75.00	10.9	Upper Marker
3	13,623	0.00	0.0	

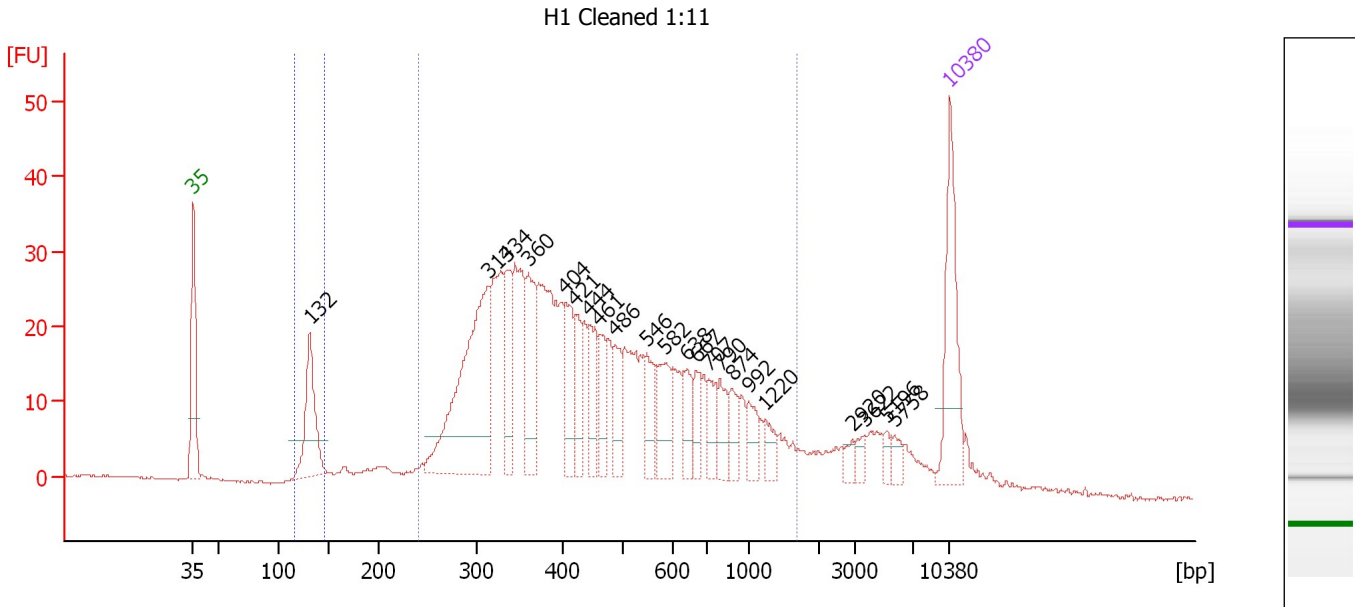
**Region table for sample 9 : PB20586 Concentrated Soni**

From [bp]	To [bp]	Average Size [bp]	Molarity [pmol/l]	Conc. [pg/μl]	Corr. Area	% of Total	Size distribution in CV [%]	Color
189	1,462	507	372.7	96.52	42.3	85	45.0	Blue

Assay Class: High Sensitivity DNA Assay  
 Data Path: C:\...ents and Settings\Bioanalyzer\2013-10-26\2013-10-26\_002.xad

Created: 10/26/2013 1:34:31 PM  
 Modified: 10/26/2013 2:17:11 PM

**Electropherogram Summary Continued ...**



**Overall Results for sample 10 : H1 Cleaned 1:11**

Number of peaks found: 22                      Corr. Area 1: 751.1  
 Noise: 0.1                                      Corr. Area 2: 38.2

**Peak table for sample 10 : H1 Cleaned 1:11**



Peak	Size [bp]	Conc. [pg/μl]	Molarity [pmol/l]	Observations
1	35	125.00	5,411.3	Lower Marker
2	132	107.65	1,239.2	
3	314	244.99	1,182.0	
4	334	62.74	284.4	
5	360	75.60	318.2	
6	404	59.54	223.2	
7	421	35.90	129.2	
8	444	42.97	146.6	
9	461	33.40	109.8	
10	486	36.45	113.6	
11	546	38.08	105.6	
12	582	45.94	119.5	
13	638	30.23	71.7	
14	667	22.67	51.5	
15	707	23.70	50.8	
16	790	25.14	48.2	
17	874	22.65	39.3	
18	992	20.93	32.0	
19	1,220	15.00	18.6	
20	2,920	7.55	3.9	
21	3,622	8.29	3.5	
22	5,196	6.25	1.8	
23	5,758	9.40	2.5	
24	10,380	75.00	10.9	Upper Marker

Assay Class: High Sensitivity DNA Assay  
Data Path: C:\...ents and Settings\Bioanalyzer\2013-10-26\2013-10-26\_002.xad

Created: 10/26/2013 1:34:31 PM  
Modified: 10/26/2013 2:17:11 PM

**Electropherogram Summary Continued ...**

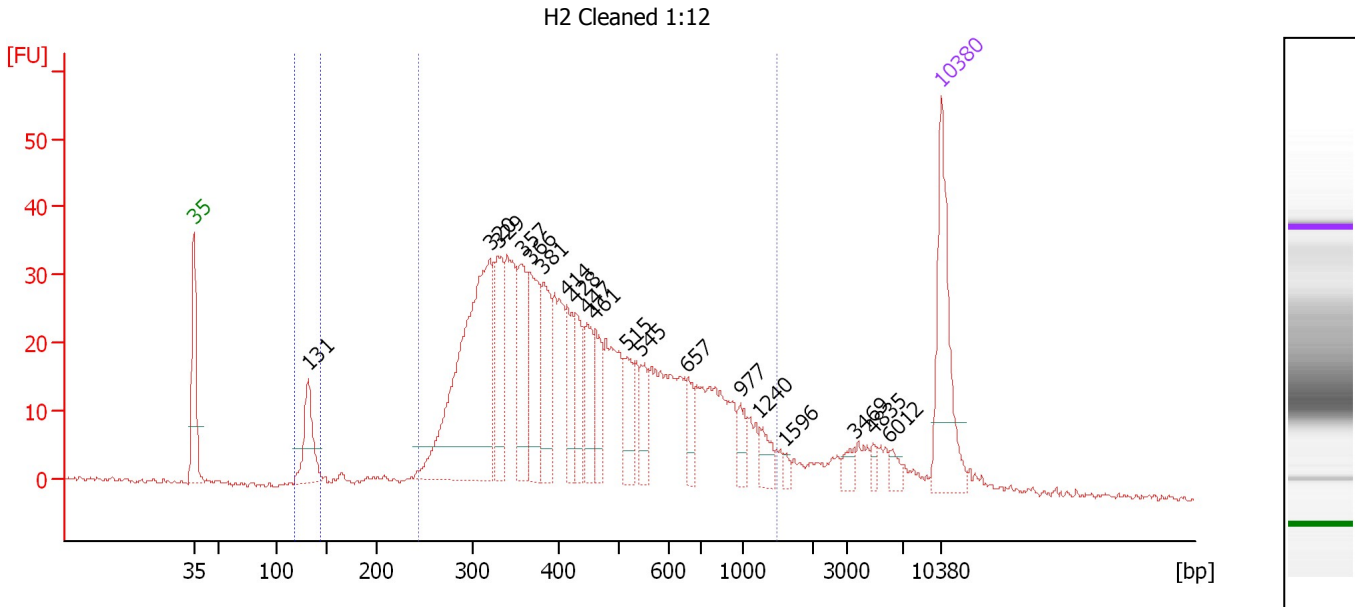
... Region table for sample 10 : H1 Cleaned 1:11

From [bp]	To [bp]	Average Size [bp]	Molarity [pmol/l]	Conc. [pg/μl]	Corr. Area	% of Total	Size distribution in CV [%]	Color
117	147	132	1,284.1	112.29	38.2	4	4.1	
242	1,677	511	5,831.7	1,585.83	751.1	84	50.2	

Assay Class: High Sensitivity DNA Assay  
 Data Path: C:\...ents and Settings\Bioanalyzer\2013-10-26\2013-10-26\_002.xad

Created: 10/26/2013 1:34:31 PM  
 Modified: 10/26/2013 2:17:11 PM

**Electropherogram Summary Continued ...**



**Overall Results for sample 11 : H2 Cleaned 1:12**

Number of peaks found: 19      Corr. Area 1: 835.7  
 Noise: 0.4      Corr. Area 2: 26.5

**Peak table for sample 11 : H2 Cleaned 1:12**

Peak	Size [bp]	Conc. [pg/μl]	Molarity [pmol/l]	Observations
1	35	125.00	5,411.3	Lower Marker
2	131	62.82	726.8	
3	320	293.24	1,390.1	
4	329	76.41	352.0	
5	357	69.26	294.1	
6	366	78.07	323.1	
7	381	62.39	248.1	
8	414	39.33	144.0	
9	428	39.55	140.0	
10	447	41.94	142.1	
11	461	38.93	127.9	
12	515	33.18	97.6	
13	545	26.94	74.9	
14	657	21.94	50.6	
15	977	15.58	24.2	
16	1,240	15.07	18.4	
17	1,596	3.92	3.7	
18	3,469	8.31	3.6	
19	4,835	5.28	1.7	
20	6,012	7.05	1.8	
21	10,380	75.00	10.9	Upper Marker

**Region table for sample 11 : H2 Cleaned 1:12**

From [bp]	To [bp]	Average Size [bp]	Molarity [pmol/l]	Conc. [pg/μl]	Corr. Area	% of Total	Size distribution in CV [%]	Color
118	144	131	709.7	61.56	26.5	3	3.6	Blue
243	1,490	487	5,262.2	1,402.25	835.7	87	45.5	Dark Blue



Assay Class: High Sensitivity DNA Assay  
Data Path: C:\...ents and Settings\Bioanalyzer\2013-10-26\2013-10-26\_002.xad

Created: 10/26/2013 1:34:31 PM  
Modified: 10/26/2013 2:17:11 PM

**Gel Image**

