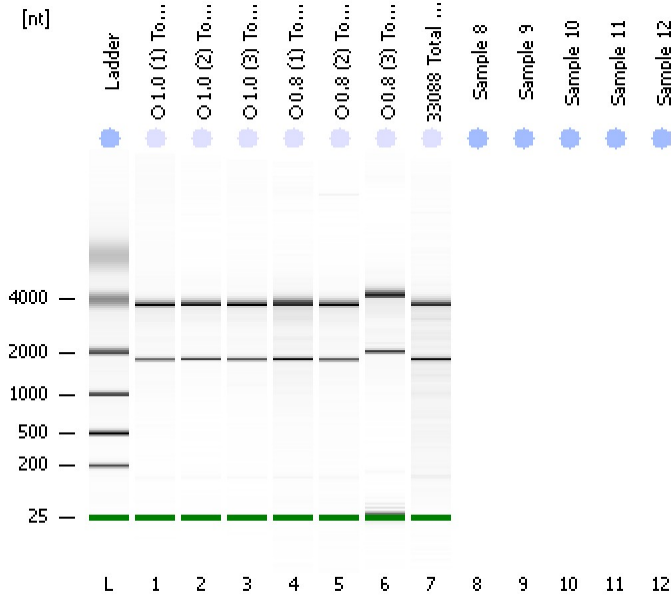


Assay Class: Eukaryote Total RNA Nano  
Data Path: C:\...ents and Settings\Bioanalyzer\2013-10-26\2013-10-26\_003.xad

Created: 10/26/2013 2:52:56 PM  
Modified: 10/26/2013 3:09:54 PM

Electrophoresis File Run Summary



Instrument Information:

Instrument Name: DE13701086      Firmware: C.01.069  
Serial#: DE13701086      Type: G2938B

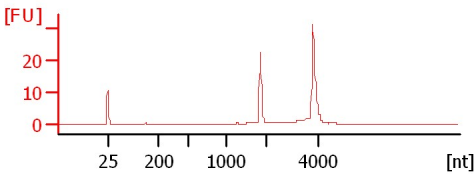
Assay Information:

Assay Origin Path: C:\Program Files\Agilent\2100 bioanalyzer\2100 expert\assays\RNA\Eukaryote Total RNA Nano Series II.xsy  
Assay Class: Eukaryote Total RNA Nano  
Version: 2.6  
Assay Comments: Total RNA Analysis ng sensitivity (Eukaryote)  
© Copyright 2003 - 2009 Agilent Technologies, Inc.

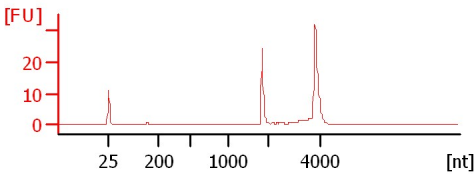
Chip Information:

Chip Lot #:   
Reagent Kit Lot #:   
Chip Comments:

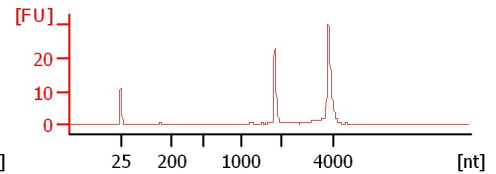
O 1.0 (1) Total RNA  
RIN:10



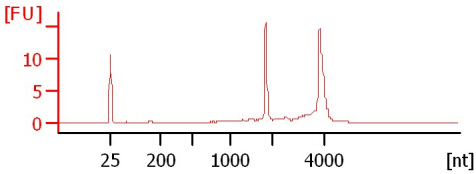
O 1.0 (2) Total RNA  
RIN:10



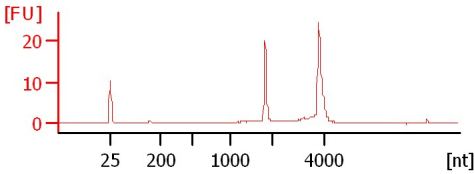
O 1.0 (3) Total RNA  
RIN:10



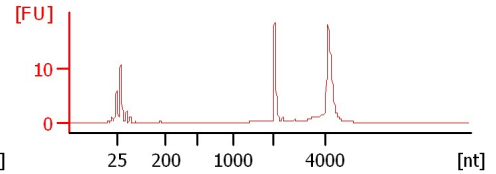
O 0.8 (1) Total RNA  
RIN: 8.90



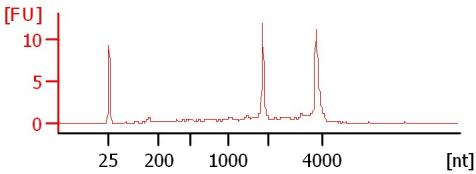
O 0.8 (2) Total RNA  
RIN: 9.70



O 0.8 (3) Total RNA  
RIN: 9.50



33088 Total RNA  
RIN: 7.80



Assay Class: Eukaryote Total RNA Nano  
Data Path: C:\...ents and Settings\Bioanalyzer\2013-10-26\2013-10-26\_003.xad

Created: 10/26/2013 2:52:56 PM  
Modified: 10/26/2013 3:09:54 PM

**Electrophoresis File Run Summary (Chip Summary)**

Sample Name	Sample Comment	Status	Result Label	Result Color
O 1.0 (1) Total RNA		✓	RIN:10	
O 1.0 (2) Total RNA		✓	RIN:10	
O 1.0 (3) Total RNA		✓	RIN:10	
O 0.8 (1) Total RNA		✓	RIN: 8.90	
O 0.8 (2) Total RNA		✓	RIN: 9.70	
O 0.8 (3) Total RNA		✓	RIN: 9.50	
33088 Total RNA		✓	RIN: 7.80	
Sample 8				
Sample 9				
Sample 10				
Sample 11				
Sample 12				
Ladder		✓	All Other Samples	

**Chip Lot #**

**Reagent Kit Lot #**

**Chip Comments :**

Assay Class: Eukaryote Total RNA Nano  
Data Path: C:\...ents and Settings\Bioanalyzer\2013-10-26\2013-10-26\_003.xad

Created: 10/26/2013 2:52:56 PM  
Modified: 10/26/2013 3:09:54 PM

**Electrophoresis Assay Details**

**General Analysis Settings**

Number of Available Sample and Ladder Wells (Max.) : 13  
Minimum Visible Range [s] : 17  
Maximum Visible Range [s] : 70  
Start Analysis Time Range [s] : 19  
End Analysis Time Range [s] : 69  
Ladder Concentration [ng/μl] : 150  
Lower Marker Concentration [ng/μl] : 0  
Upper Marker Concentration [ng/μl] : 0  
Used Lower Marker for Quantitation  
Standard Curve Fit is Logarithmic  
Show Data Aligned to Lower Marker

**Integrator Settings**

Integration Start Time [s] : 19  
Integration End Time [s] : 69  
Slope Threshold : 0.6  
Height Threshold [FU] : 0.5  
Area Threshold : 0.2  
Width Threshold [s] : 0.5  
Baseline Plateau [s] : 6

**Filter Settings**

Filter Width [s] : 0.5  
Polynomial Order : 4

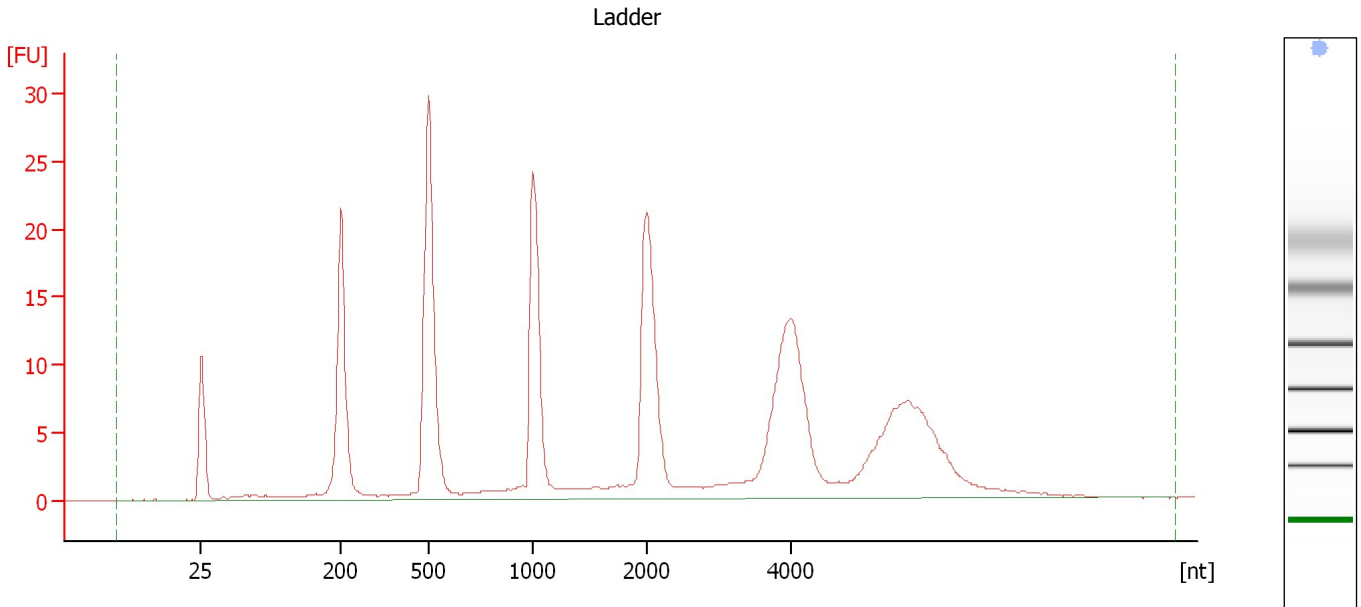
**Ladder**

Ladder Peak	Size
1	25
2	200
3	500
4	1000
5	2000
6	4000

Assay Class: Eukaryote Total RNA Nano  
Data Path: C:\...ents and Settings\Bioanalyzer\2013-10-26\2013-10-26\_003.xad

Created: 10/26/2013 2:52:56 PM  
Modified: 10/26/2013 3:09:54 PM

**Electropherogram Summary**



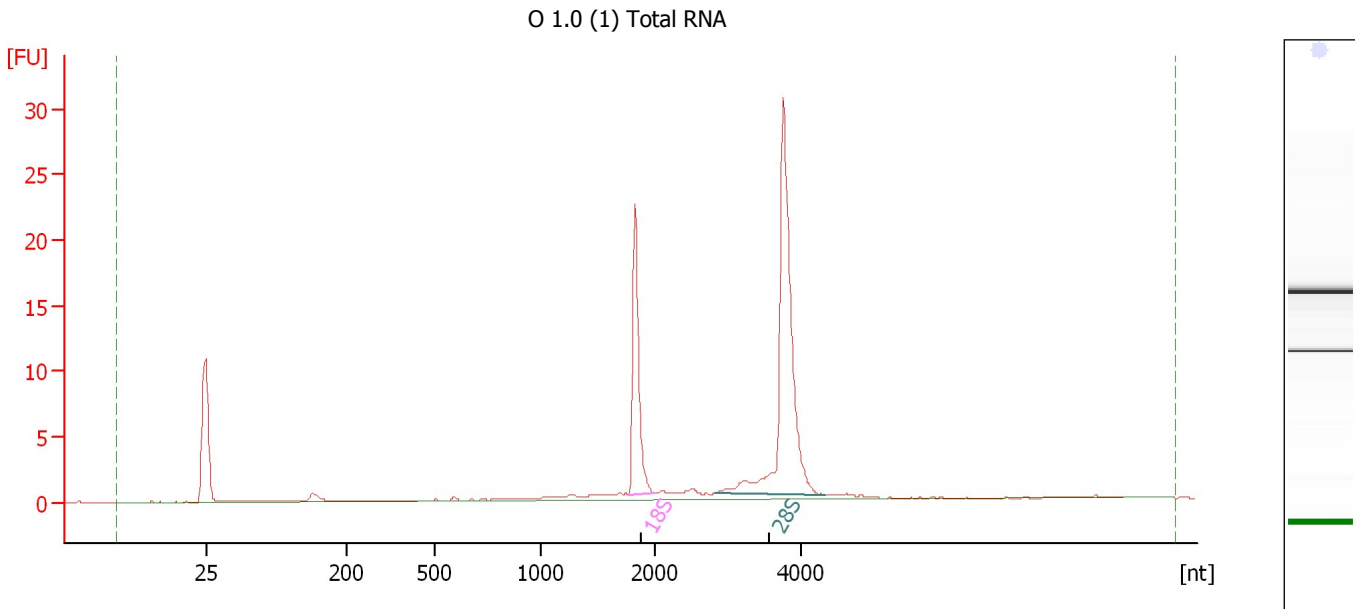
**Overall Results for Ladder**

RNA Area:	267.5	Result Flagging Color:	<span style="background-color: #add8e6; border: 1px solid black; display: inline-block; width: 20px; height: 10px;"></span>
RNA Concentration:	150 ng/ $\mu$ l	Result Flagging Label:	All Other Samples

Assay Class: Eukaryote Total RNA Nano  
Data Path: C:\...ents and Settings\Bioanalyzer\2013-10-26\2013-10-26\_003.xad

Created: 10/26/2013 2:52:56 PM  
Modified: 10/26/2013 3:09:54 PM

**Electropherogram Summary Continued ...**



**Overall Results for sample 1 : O 1.0 (1) Total RNA**

RNA Area: 72.7 RNA Integrity Number (RIN): 10 (B.02.08)  
RNA Concentration: 41 ng/μl Result Flagging Color:   
rRNA Ratio [28s / 18s]: 2.2 Result Flagging Label: RIN:10

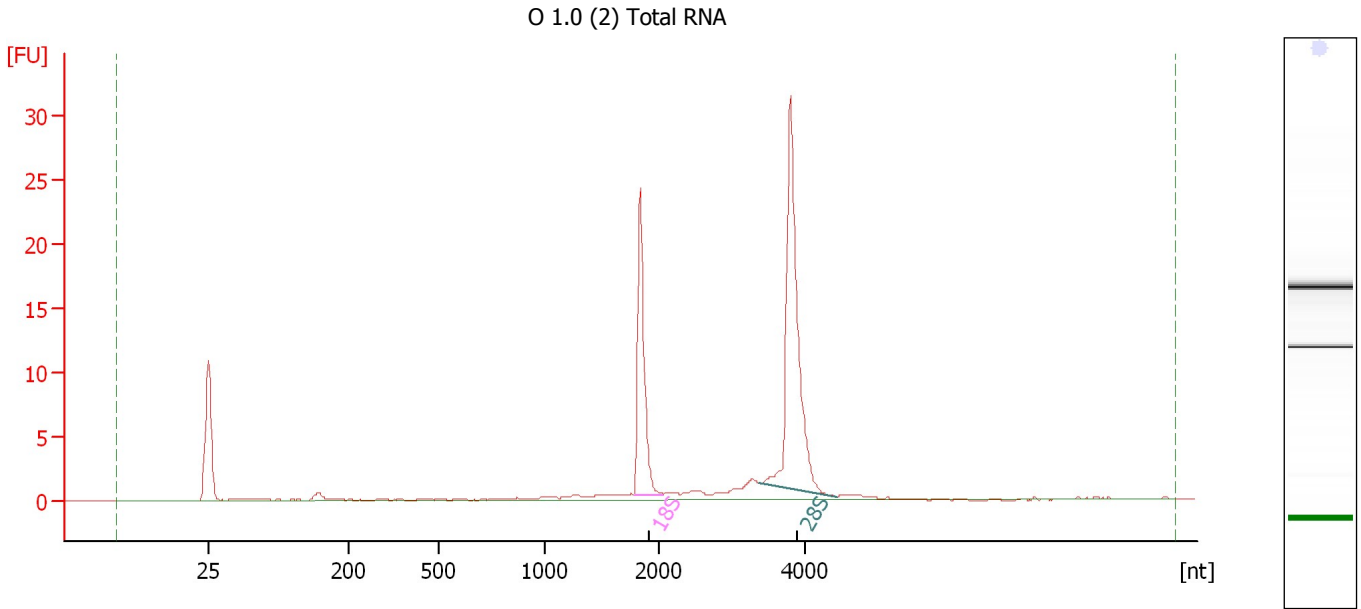
**Fragment table for sample 1 : O 1.0 (1) Total RNA**

Name	Start Size [nt]	End Size [nt]	Area	% of total Area
18S	1,777	2,006	17.2	23.7
28S	2,823	4,339	37.8	52.0

Assay Class: Eukaryote Total RNA Nano  
Data Path: C:\...ents and Settings\Bioanalyzer\2013-10-26\2013-10-26\_003.xad

Created: 10/26/2013 2:52:56 PM  
Modified: 10/26/2013 3:09:54 PM

**Electropherogram Summary Continued ...**



**Overall Results for sample 2 : O 1.0 (2) Total RNA**

RNA Area: 75.5 RNA Integrity Number (RIN): 10 (B.02.08)  
RNA Concentration: 42 ng/μl Result Flagging Color:   
rRNA Ratio [28s / 18s]: 1.9 Result Flagging Label: RIN:10

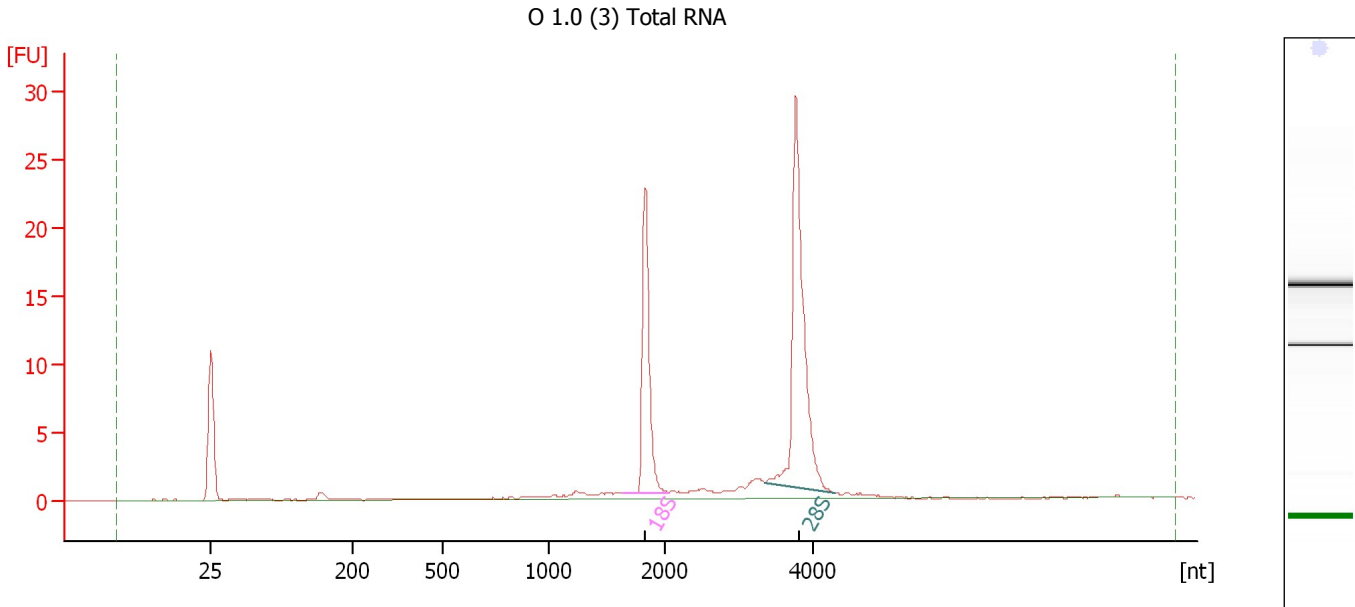
**Fragment table for sample 2 : O 1.0 (2) Total RNA**

Name	Start Size [nt]	End Size [nt]	Area	% of total Area
18S	1,790	2,067	18.5	24.5
28S	3,374	4,420	35.1	46.5

Assay Class: Eukaryote Total RNA Nano  
Data Path: C:\...ents and Settings\Bioanalyzer\2013-10-26\2013-10-26\_003.xad

Created: 10/26/2013 2:52:56 PM  
Modified: 10/26/2013 3:09:54 PM

**Electropherogram Summary Continued ...**



**Overall Results for sample 3 : O 1.0 (3) Total RNA**

RNA Area: 71.4                      RNA Integrity Number (RIN): 10 (B.02.08)  
RNA Concentration: 40 ng/μl              Result Flagging Color:   
rRNA Ratio [28s / 18s]: 1.9              Result Flagging Label: RIN:10

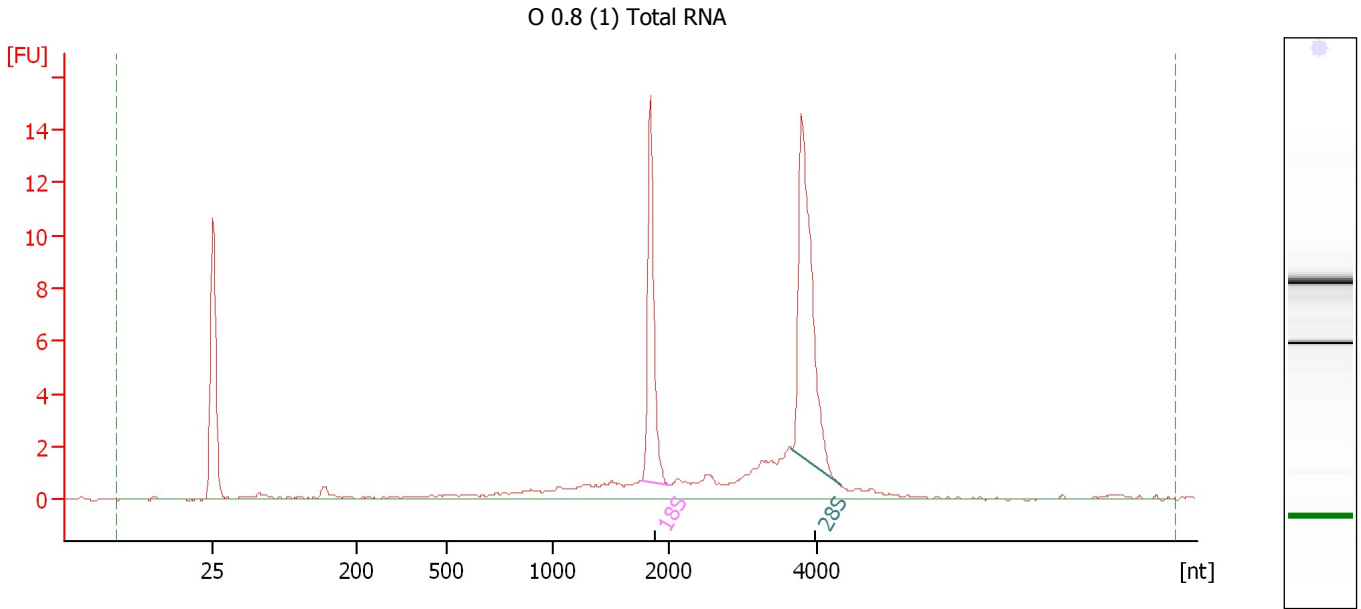
**Fragment table for sample 3 : O 1.0 (3) Total RNA**

Name	Start Size [nt]	End Size [nt]	Area	% of total Area
18S	1,645	2,057	17.7	24.9
28S	3,371	4,308	33.1	46.4

Assay Class: Eukaryote Total RNA Nano  
Data Path: C:\...ents and Settings\Bioanalyzer\2013-10-26\2013-10-26\_003.xad

Created: 10/26/2013 2:52:56 PM  
Modified: 10/26/2013 3:09:54 PM

**Electropherogram Summary Continued ...**



**Overall Results for sample 4 : O 0.8 (1) Total RNA**

RNA Area: 60.5                      RNA Integrity Number (RIN): 8.9 (B.02.08)  
RNA Concentration: 34 ng/μl              Result Flagging Color:   
rRNA Ratio [28s / 18s]: 1.6              Result Flagging Label: RIN: 8.90

**Fragment table for sample 4 : O 0.8 (1) Total RNA**

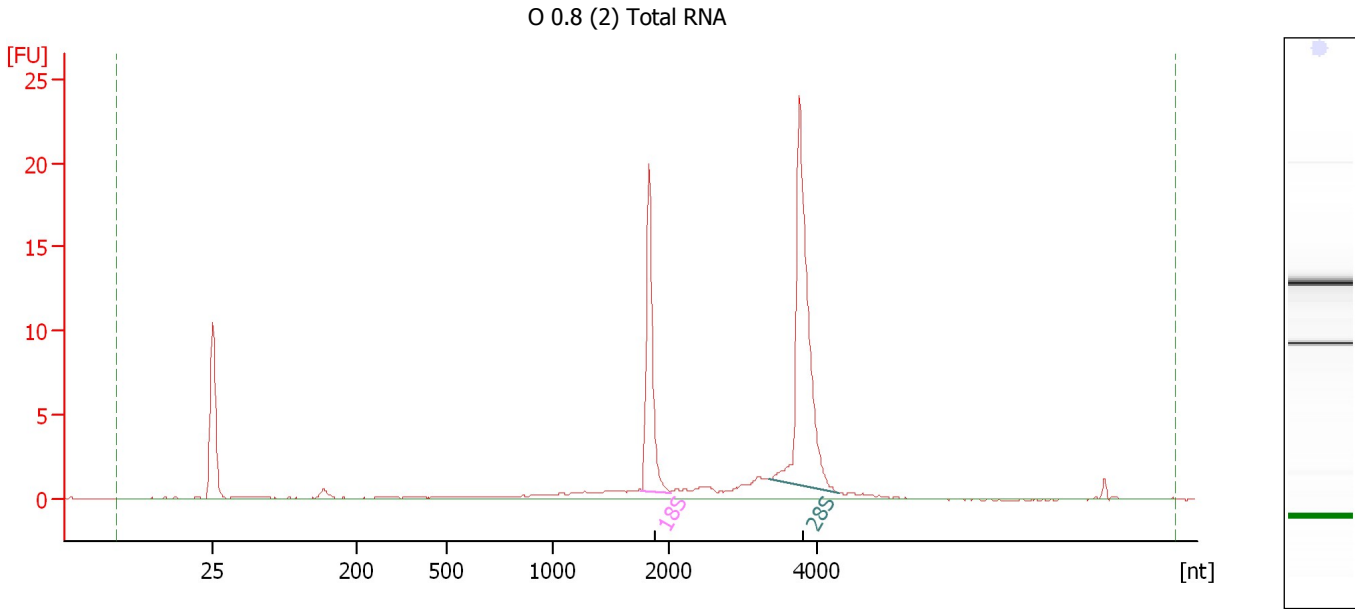
Name	Start Size [nt]	End Size [nt]	Area	% of total Area
18S	1,778	2,017	11.3	18.7
28S	3,655	4,316	17.6	29.2



Assay Class: Eukaryote Total RNA Nano  
Data Path: C:\...ents and Settings\Bioanalyzer\2013-10-26\2013-10-26\_003.xad

Created: 10/26/2013 2:52:56 PM  
Modified: 10/26/2013 3:09:54 PM

**Electropherogram Summary Continued ...**



**Overall Results for sample 5 : O 0.8 (2) Total RNA**

RNA Area: 64.8 RNA Integrity Number (RIN): 9.7 (B.02.08)  
RNA Concentration: 36 ng/μl Result Flagging Color:   
rRNA Ratio [28s / 18s]: 1.9 Result Flagging Label: RIN: 9.70

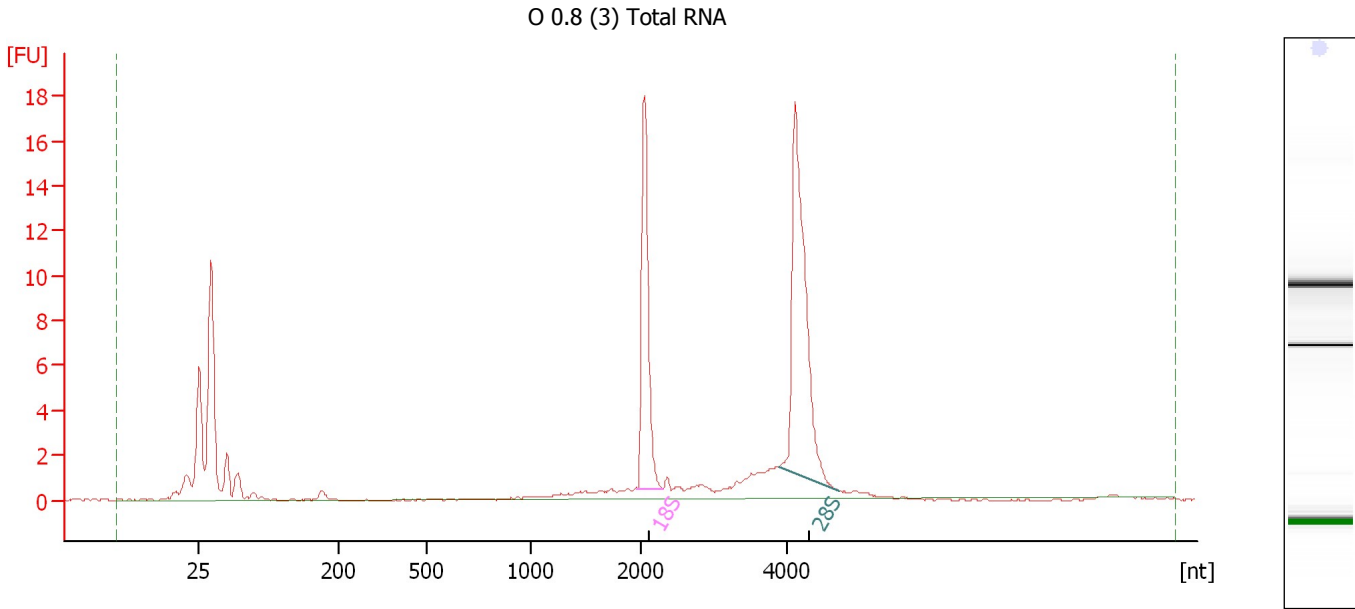
**Fragment table for sample 5 : O 0.8 (2) Total RNA**

Name	Start Size [nt]	End Size [nt]	Area	% of total Area
18S	1,769	2,032	14.8	22.8
28S	3,354	4,288	28.0	43.3

Assay Class: Eukaryote Total RNA Nano  
Data Path: C:\...ents and Settings\Bioanalyzer\2013-10-26\2013-10-26\_003.xad

Created: 10/26/2013 2:52:56 PM  
Modified: 10/26/2013 3:09:54 PM

**Electropherogram Summary Continued ...**



**Overall Results for sample 6 : O 0.8 (3) Total RNA**

RNA Area: 75.6 RNA Integrity Number (RIN): 9.5 (B.02.08)  
RNA Concentration: 42 ng/μl Result Flagging Color:   
rRNA Ratio [28s / 18s]: 1.7 Result Flagging Label: RIN: 9.50

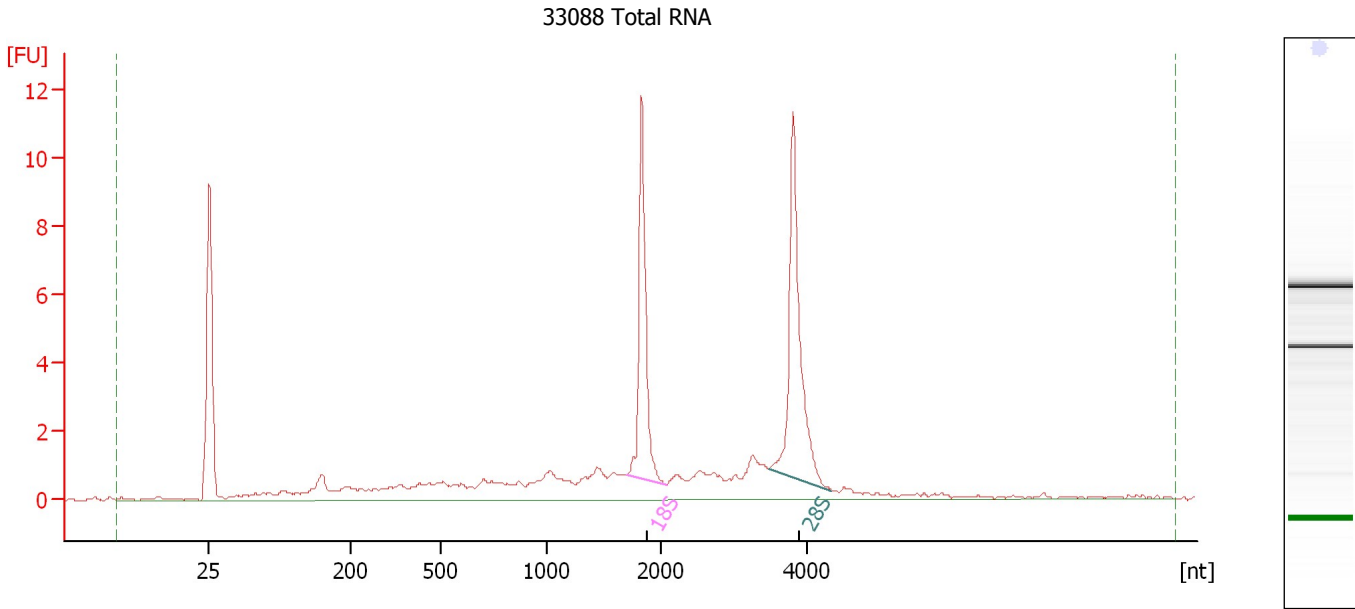
**Fragment table for sample 6 : O 0.8 (3) Total RNA**

Name	Start Size [nt]	End Size [nt]	Area	% of total Area
18S	1,959	2,277	13.4	17.7
28S	3,901	4,728	22.9	30.2

Assay Class: Eukaryote Total RNA Nano  
Data Path: C:\...ents and Settings\Bioanalyzer\2013-10-26\2013-10-26\_003.xad

Created: 10/26/2013 2:52:56 PM  
Modified: 10/26/2013 3:09:54 PM

**Electropherogram Summary Continued ...**



**Overall Results for sample 7 : 33088 Total RNA**

RNA Area: 60.0 RNA Integrity Number (RIN): 7.8 (B.02.08)  
RNA Concentration: 34 ng/μl Result Flagging Color:   
rRNA Ratio [28s / 18s]: 1.3 Result Flagging Label: RIN: 7.80

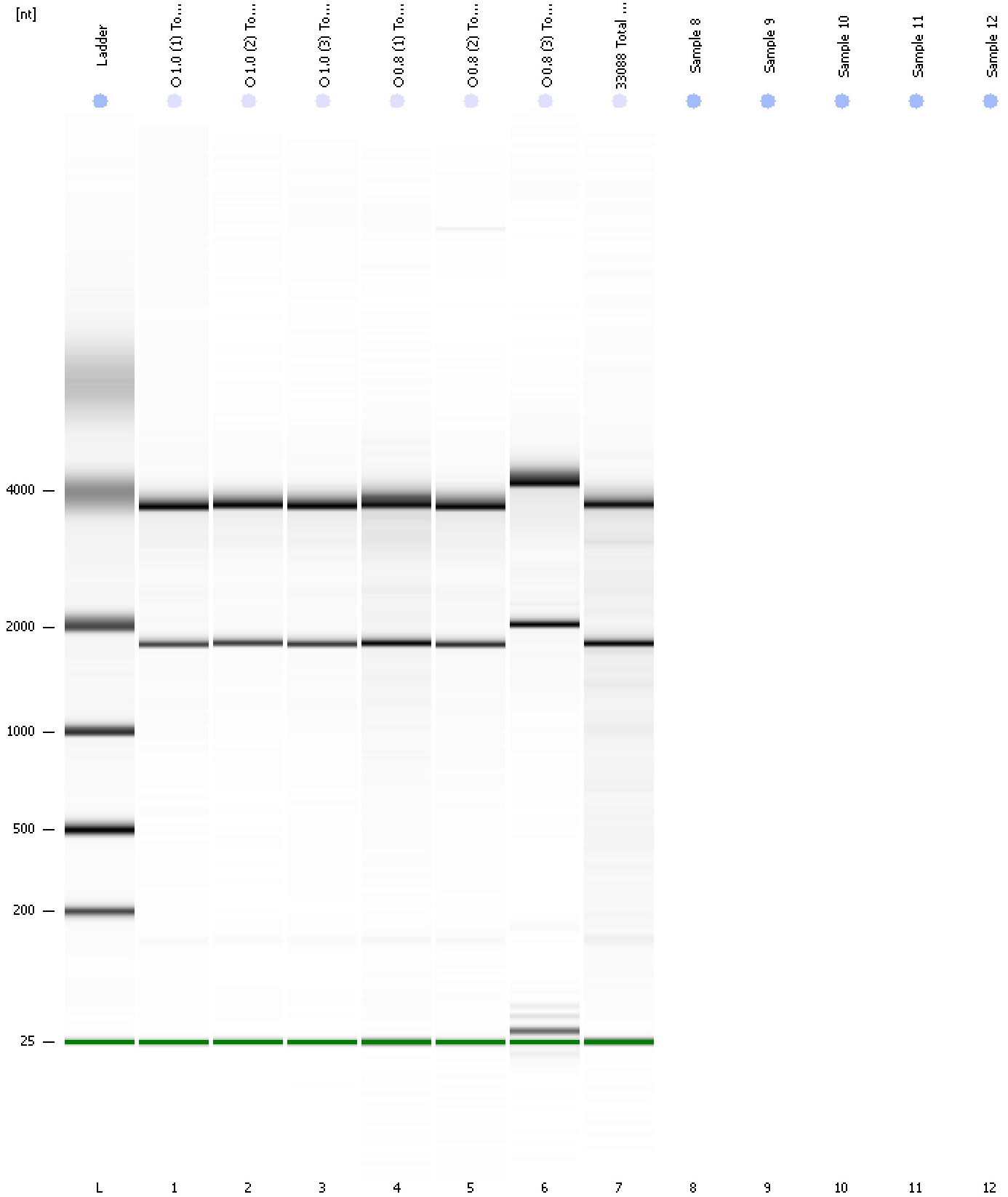
**Fragment table for sample 7 : 33088 Total RNA**

Name	Start Size [nt]	End Size [nt]	Area	% of total Area
18S	1,707	2,083	9.0	15.0
28S	3,474	4,329	12.0	20.1

Assay Class: Eukaryote Total RNA Nano  
Data Path: C:\...ents and Settings\Bioanalyzer\2013-10-26\2013-10-26\_003.xad

Created: 10/26/2013 2:52:56 PM  
Modified: 10/26/2013 3:09:54 PM

**Gel Image**



Assay Class: Eukaryote Total RNA Nano  
Data Path: C:\...ents and Settings\Bioanalyzer\2013-10-26\2013-10-26\_003.xad

Created: 10/26/2013 2:52:56 PM  
Modified: 10/26/2013 3:09:54 PM

**Invalid Samples**

Sample 8 has not been run, no results available.

Sample 9 has not been run, no results available.

Sample 10 has not been run, no results available.

Sample 11 has not been run, no results available.

Sample 12 has not been run, no results available.