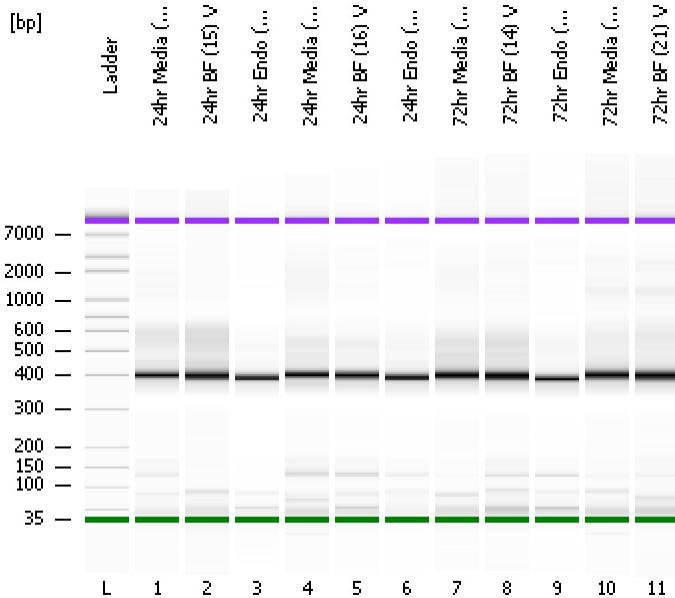


Assay Class: High Sensitivity DNA Assay
Data Path: C:\...ents and Settings\Bioanalyzer\2013-10-29\2013-10-29_001.xad

Created: 10/29/2013 10:23:15 AM
Modified: 10/29/2013 11:10:13 AM

Electrophoresis File Run Summary



Instrument Information:

Instrument Name: DE13701086 Firmware: C.01.069
Serial#: DE13701086 Type: G2938B

Assay Information:

Assay Origin Path: C:\Program Files\Agilent\2100 bioanalyzer\2100 expert\assays\dsDNA\High Sensitivity DNA.xsy
Assay Class: High Sensitivity DNA Assay
Version: 1.03
Assay Comments: Copyright © 2003-2010 Agilent Technologies

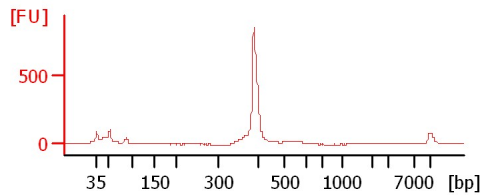
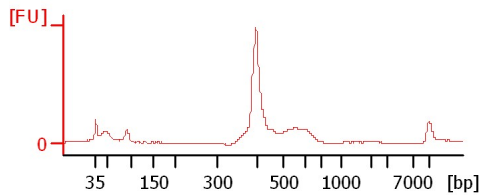
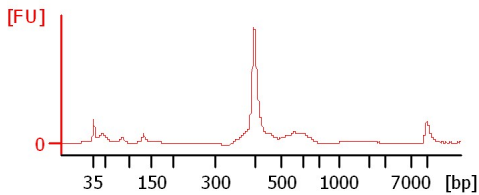
Chip Information:

Chip Lot #:
Reagent Kit Lot #:
Chip Comments:

24hr Media (15 V)

24hr BF (15 V)

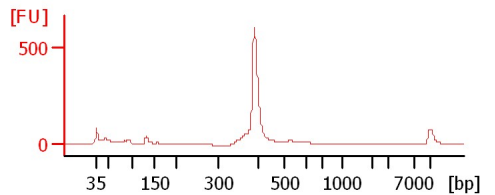
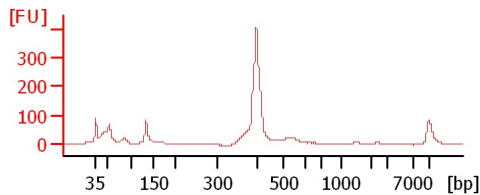
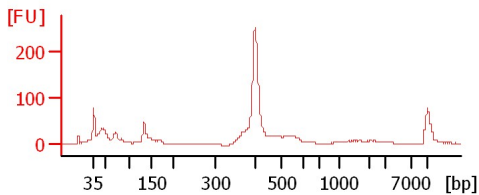
24hr Endo (15 V)



24hr Media (16 V)

24hr BF (16 V)

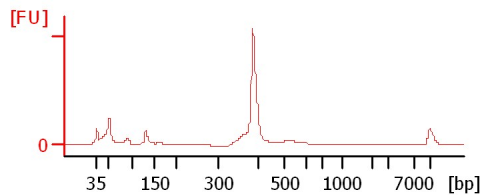
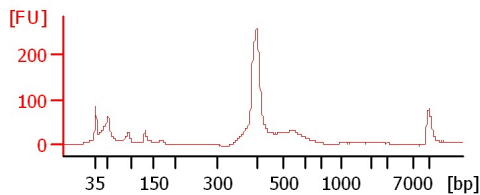
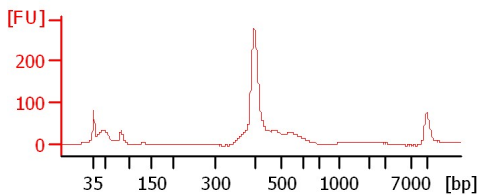
24hr Endo (16 V)



72hr Media (14 V)

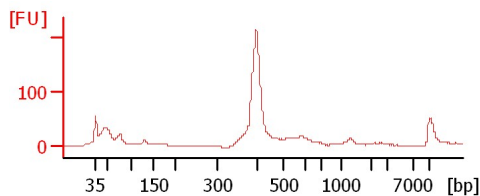
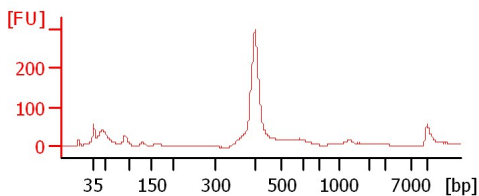
72hr BF (14 V)

72hr Endo (14 V)



72hr Media (21 V)

72hr BF (21 V)



Assay Class: High Sensitivity DNA Assay
 Data Path: C:\...ents and Settings\Bioanalyzer\2013-10-29\2013-10-29_001.xad

Created: 10/29/2013 10:23:15 AM
 Modified: 10/29/2013 11:10:13 AM

Electrophoresis File Run Summary (Chip Summary)

Sample Name	Sample Comment	Rest. Digest	Status	Observation	Result Label	Result Color
24hr Media (15) V		<input type="checkbox"/>	✓			
24hr BF (15) V		<input type="checkbox"/>	✓			
24hr Endo (15) V		<input type="checkbox"/>	✓			
24hr Media (16) V		<input type="checkbox"/>	✓			
24hr BF (16) V		<input type="checkbox"/>	✓			
24hr Endo (16) V		<input type="checkbox"/>	✓			
72hr Media (14) V		<input type="checkbox"/>	✓			
72hr BF (14) V		<input type="checkbox"/>	✓			
72hr Endo (14) V		<input type="checkbox"/>	✓			
72hr Media (21) V		<input type="checkbox"/>	✓			
72hr BF (21) V		<input type="checkbox"/>	✓			
Ladder		<input type="checkbox"/>	✓			

Chip Lot #

Reagent Kit Lot #

Chip Comments :

Assay Class: High Sensitivity DNA Assay
Data Path: C:\...ents and Settings\Bioanalyzer\2013-10-29\2013-10-29_001.xad

Created: 10/29/2013 10:23:15 AM
Modified: 10/29/2013 11:10:13 AM

Electrophoresis Assay Details

General Analysis Settings

Number of Available Sample and Ladder Wells (Max.) : 12
Minimum Visible Range [s] : 32
Maximum Visible Range [s] : 138
Start Analysis Time Range [s] : 33
End Analysis Time Range [s] : 137.5
Ladder Concentration [pg/μl] : 1950
Uses Standard Area for Ladder Fragments
Lower Marker Concentration [pg/μl] : 125
Upper Marker Concentration [pg/μl] : 75
Used Upper Marker for Quantitation
Standard Curve Fit is Point to Point
Show Data Aligned to Lower and Upper Marker

Integrator Settings

Integration Start Time [s] : 33.05
Integration End Time [s] : 137
Slope Threshold : 0.8
Height Threshold [FU] : 5
Area Threshold : 0.1
Width Threshold [s] : 0.6
Baseline Plateau [s] : 0.5

Filter Settings

Filter Width [s] : 0.5
Polynomial Order : 4

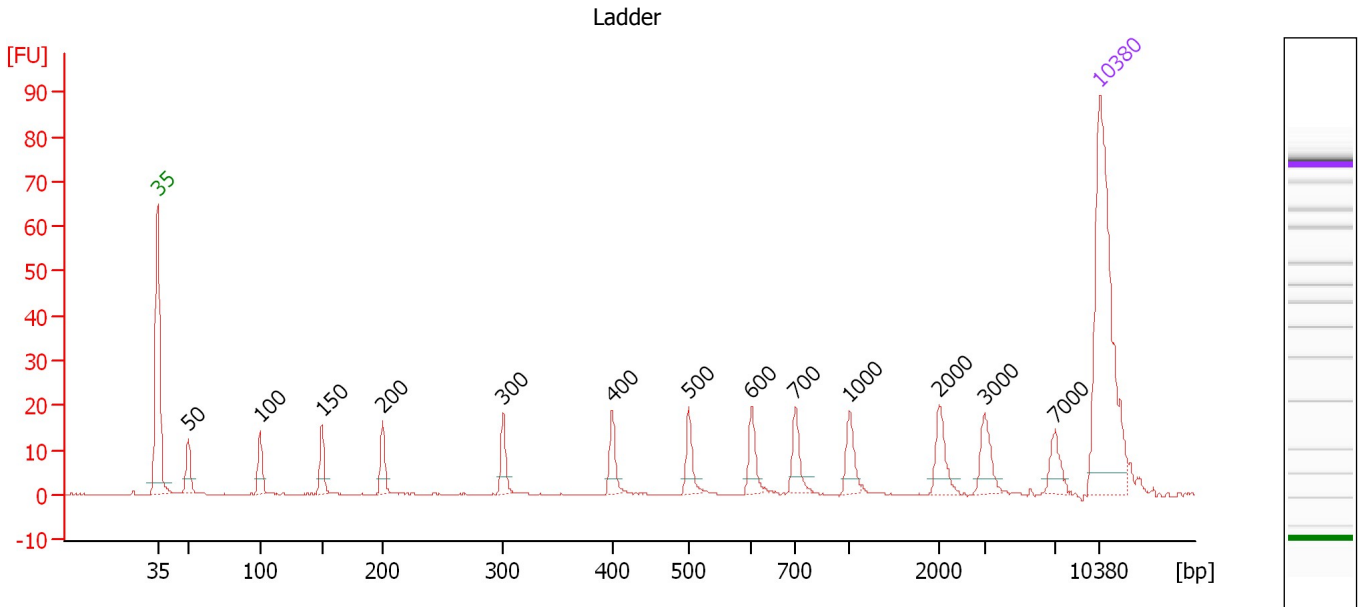
Ladder

Ladder Peak	Size	Area
1	35	160
2	50	210
3	100	208
4	150	221
5	200	242
6	300	270
7	400	305
8	500	306
9	600	336
10	700	321
11	1000	366
12	2000	413
13	3000	411
14	7000	400
15	10380	214

Assay Class: High Sensitivity DNA Assay
 Data Path: C:\...ents and Settings\Bioanalyzer\2013-10-29\2013-10-29_001.xad

Created: 10/29/2013 10:23:15 AM
 Modified: 10/29/2013 11:10:13 AM

Electropherogram Summary



Overall Results for Ladder

Noise: 0.1

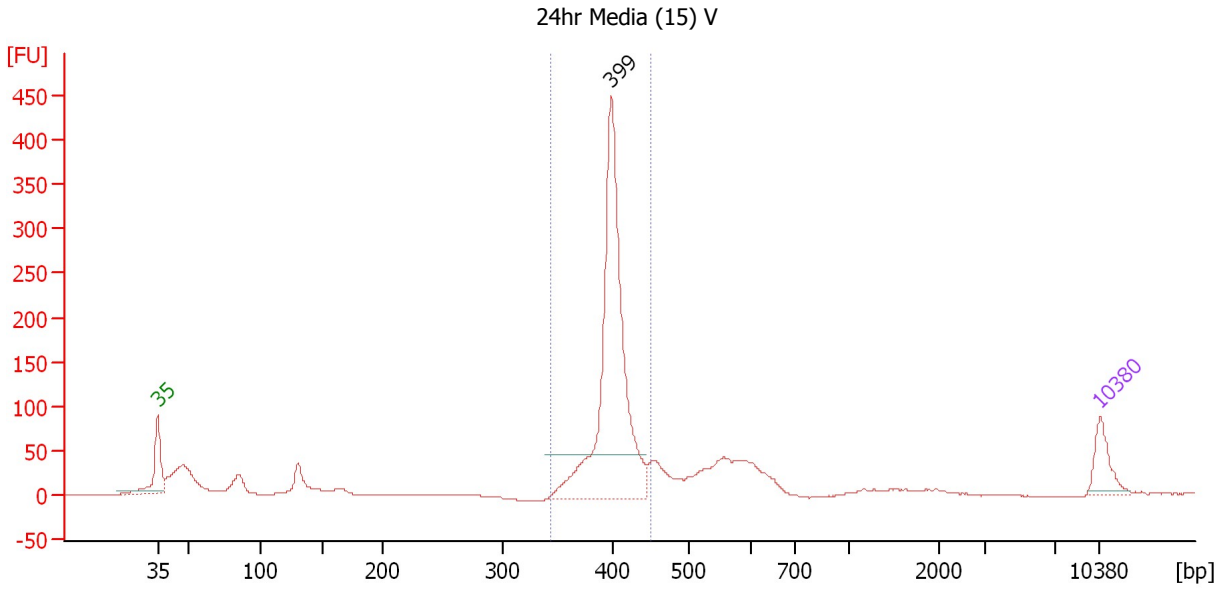
Peak table for Ladder

Peak	Size [bp]	Conc. [pg/μl]	Molarity [pmol/l]	Observations
1	35	125.00	5,411.3	Lower Marker
2	50	150.00	4,545.5	Ladder Peak
3	100	150.00	2,272.7	Ladder Peak
4	150	150.00	1,515.2	Ladder Peak
5	200	150.00	1,136.4	Ladder Peak
6	300	150.00	757.6	Ladder Peak
7	400	150.00	568.2	Ladder Peak
8	500	150.00	454.5	Ladder Peak
9	600	150.00	378.8	Ladder Peak
10	700	150.00	324.7	Ladder Peak
11	1,000	150.00	227.3	Ladder Peak
12	2,000	150.00	113.6	Ladder Peak
13	3,000	150.00	75.8	Ladder Peak
14	7,000	150.00	32.5	Ladder Peak
15	10,380	75.00	10.9	Upper Marker

Assay Class: High Sensitivity DNA Assay
 Data Path: C:\...ents and Settings\Bioanalyzer\2013-10-29\2013-10-29_001.xad

Created: 10/29/2013 10:23:15 AM
 Modified: 10/29/2013 11:10:13 AM

Electropherogram Summary Continued ...



Setpoint Deviations for sample 1 : 24hr Media (15) V

Height Threshold [FU] : 50

Overall Results for sample 1 : 24hr Media (15) V

Number of peaks found: 1 Corr. Area 1: 1,014.0
 Noise: 0.1

Peak table for sample 1 : 24hr Media (15) V

Peak	Size [bp]	Conc. [pg/μl]	Molarity [pmol/l]	Observations
1	35	125.00	5,411.3	Lower Marker
2	399	1,131.93	4,298.7	
3	10,380	75.00	10.9	Upper Marker

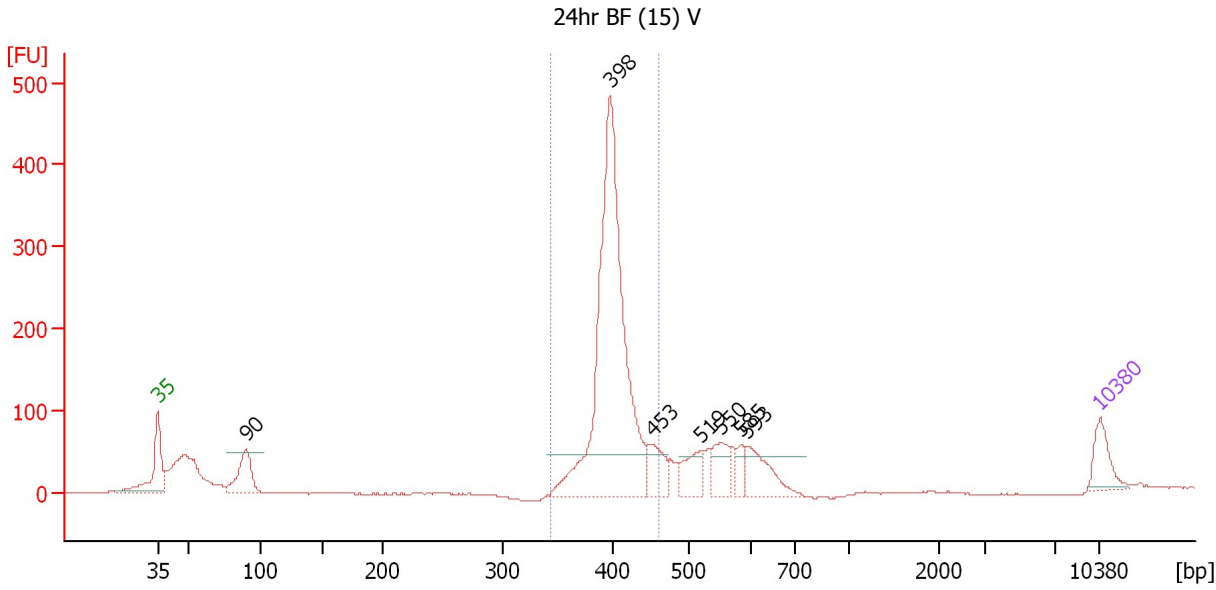
Region table for sample 1 : 24hr Media (15) V

From [bp]	To [bp]	Average Size [bp]	Molarity [pmol/l]	Conc. [pg/μl]	Corr. Area	% of Total	Size distribution in CV [%]	Color
344	451	402	4,115.4	1,090.37	1,014.0	60	4.2	Blue

Assay Class: High Sensitivity DNA Assay
 Data Path: C:\...ents and Settings\Bioanalyzer\2013-10-29\2013-10-29_001.xad

Created: 10/29/2013 10:23:15 AM
 Modified: 10/29/2013 11:10:13 AM

Electropherogram Summary Continued ...



Setpoint Deviations for sample 2 : 24hr BF (15) V

Height Threshold [FU] : 50

Overall Results for sample 2 : 24hr BF (15) V

Number of peaks found: 7 Corr. Area 1: 1,396.3
 Noise: 0.5

Peak table for sample 2 : 24hr BF (15) V

Peak	Size [bp]	Conc. [pg/μl]	Molarity [pmol/l]	Observations
1	35	125.00	5,411.3	Lower Marker
2	90	200.00	3,361.2	
3	398	1,428.10	5,431.1	
4	453	117.96	394.5	
5	519	108.16	315.6	
6	550	116.19	320.0	
7	585	49.62	128.6	
8	593	144.12	368.3	
9	10,380	75.00	10.9	Upper Marker

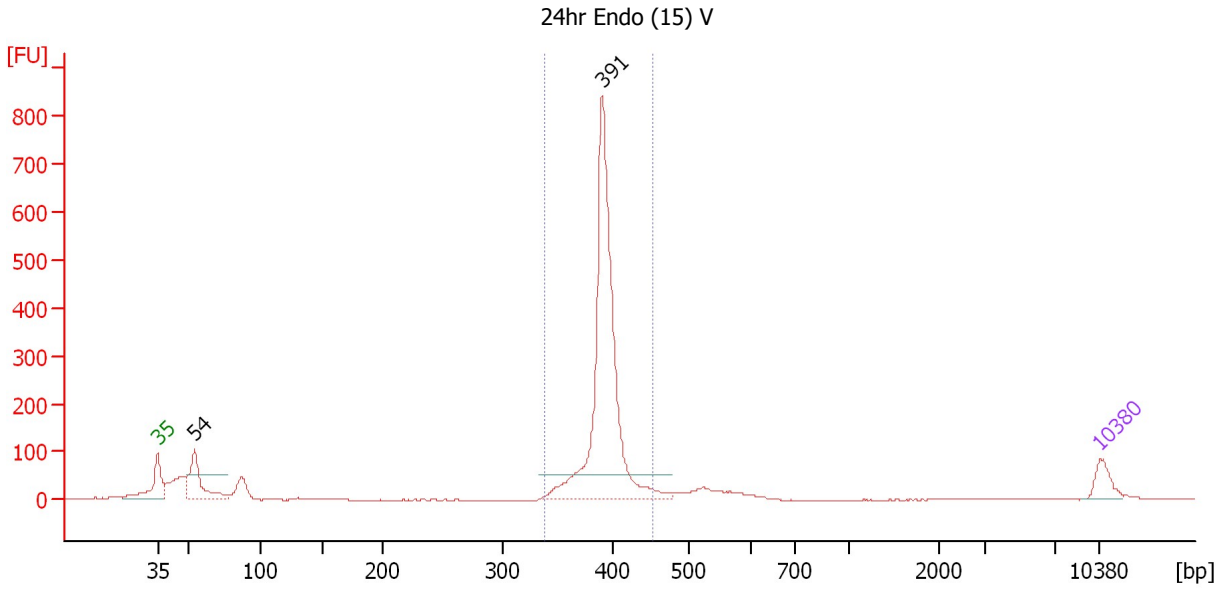
Region table for sample 2 : 24hr BF (15) V

From [bp]	To [bp]	Average Size [bp]	Molarity [pmol/l]	Conc. [pg/μl]	Corr. Area	% of Total	Size distribution in CV [%]	Color
344	461	403	5,344.3	1,419.48	1,396.3	61	4.8	Blue

Assay Class: High Sensitivity DNA Assay
 Data Path: C:\...ents and Settings\Bioanalyzer\2013-10-29\2013-10-29_001.xad

Created: 10/29/2013 10:23:15 AM
 Modified: 10/29/2013 11:10:13 AM

Electropherogram Summary Continued ...



Setpoint Deviations for sample 3 : 24hr Endo (15) V

Height Threshold [FU] : 50

Overall Results for sample 3 : 24hr Endo (15) V

Number of peaks found: 2 Corr. Area 1: 1,694.2
 Noise: 0.7

Peak table for sample 3 : 24hr Endo (15) V

Peak	Size [bp]	Conc. [pg/μl]	Molarity [pmol/l]	Observations
1	35	125.00	5,411.3	Lower Marker
2	54	353.35	9,828.8	
3	391	1,813.43	7,033.9	
4	10,380	75.00	10.9	Upper Marker

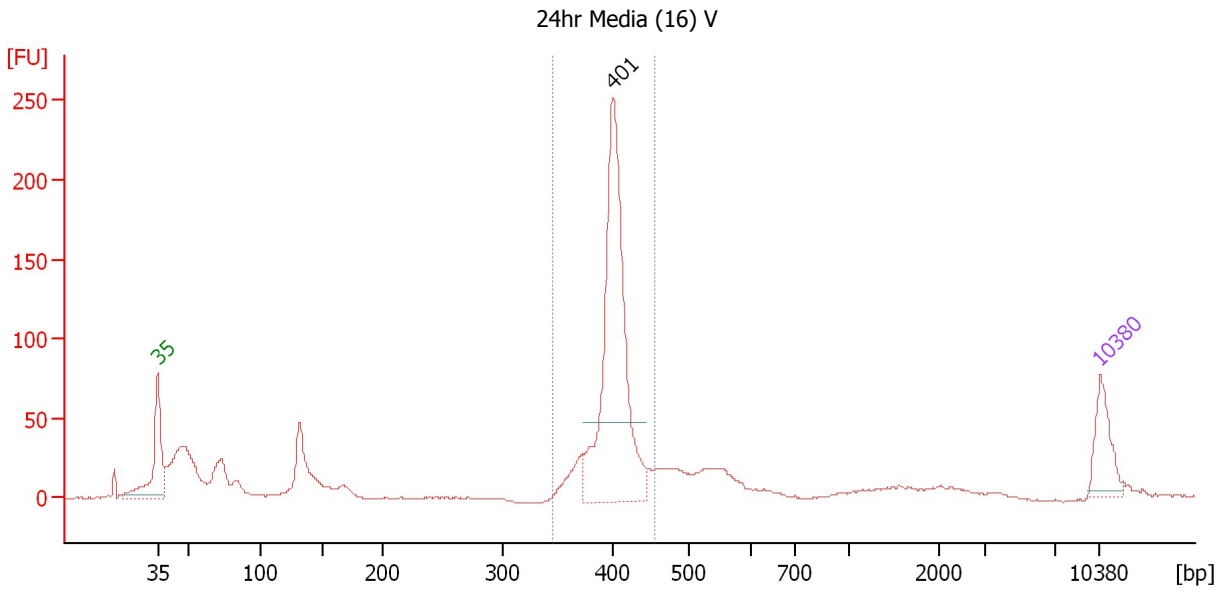
Region table for sample 3 : 24hr Endo (15) V

From [bp]	To [bp]	Average Size [bp]	Molarity [pmol/l]	Conc. [pg/μl]	Corr. Area	% of Total	Size distribution in CV [%]	Color
338	453	393	6,853.4	1,775.59	1,694.2	69	4.0	Blue

Assay Class: High Sensitivity DNA Assay
 Data Path: C:\...ents and Settings\Bioanalyzer\2013-10-29\2013-10-29_001.xad

Created: 10/29/2013 10:23:15 AM
 Modified: 10/29/2013 11:10:13 AM

Electropherogram Summary Continued ...



Setpoint Deviations for sample 4 : 24hr Media (16) V

Height Threshold [FU] : 50

Overall Results for sample 4 : 24hr Media (16) V

Number of peaks found: 1 Corr. Area 1: 621.3
 Noise: 0.3

Peak table for sample 4 : 24hr Media (16) V

Peak	Size [bp]	Conc. [pg/μl]	Molarity [pmol/l]	Observations
1	35	125.00	5,411.3	Lower Marker
2	401	703.62	2,660.5	
3	10,380	75.00	10.9	Upper Marker

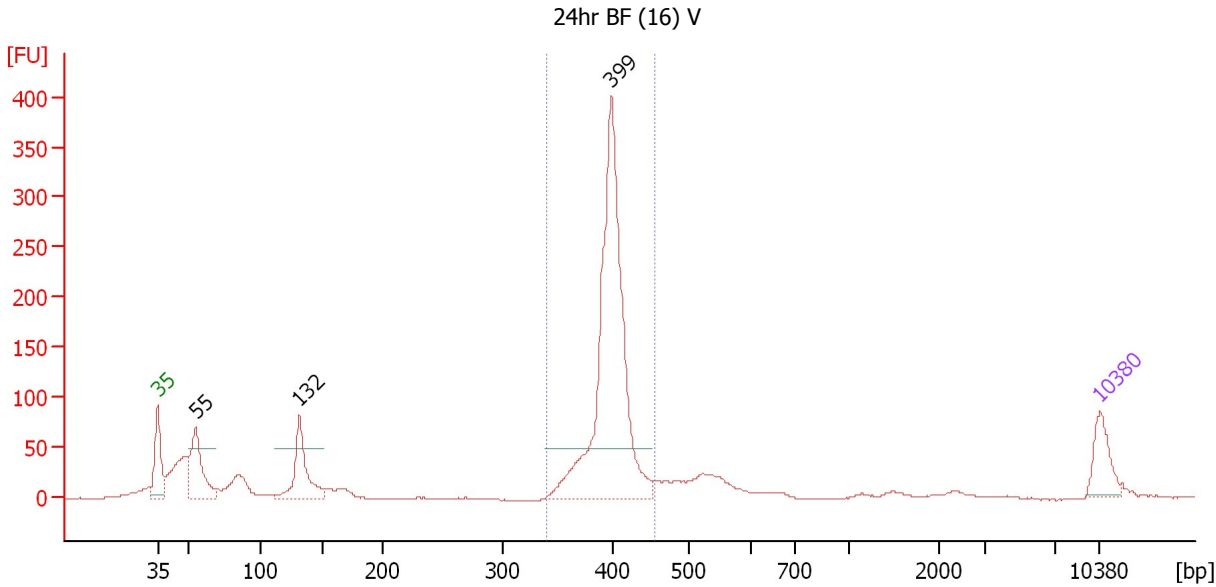
Region table for sample 4 : 24hr Media (16) V

From [bp]	To [bp]	Average Size [bp]	Molarity [pmol/l]	Conc. [pg/μl]	Corr. Area	% of Total	Size distribution in CV [%]	Color
345	455	402	2,822.3	748.19	621.3	51	4.4	Blue

Assay Class: High Sensitivity DNA Assay
 Data Path: C:\...ents and Settings\Bioanalyzer\2013-10-29\2013-10-29_001.xad

Created: 10/29/2013 10:23:15 AM
 Modified: 10/29/2013 11:10:13 AM

Electropherogram Summary Continued ...



Setpoint Deviations for sample 5 : 24hr BF (16) V

Height Threshold [FU] : 50

Overall Results for sample 5 : 24hr BF (16) V

Number of peaks found: 3 Corr. Area 1: 1,018.5
 Noise: 0.3

Peak table for sample 5 : 24hr BF (16) V

Peak	Size [bp]	Conc. [pg/µl]	Molarity [pmol/l]	Observations
1	35	125.00	5,411.3	Lower Marker
2	55	231.34	6,383.3	
3	132	226.56	2,604.9	
4	399	1,053.84	3,999.9	
5	10,380	75.00	10.9	Upper Marker

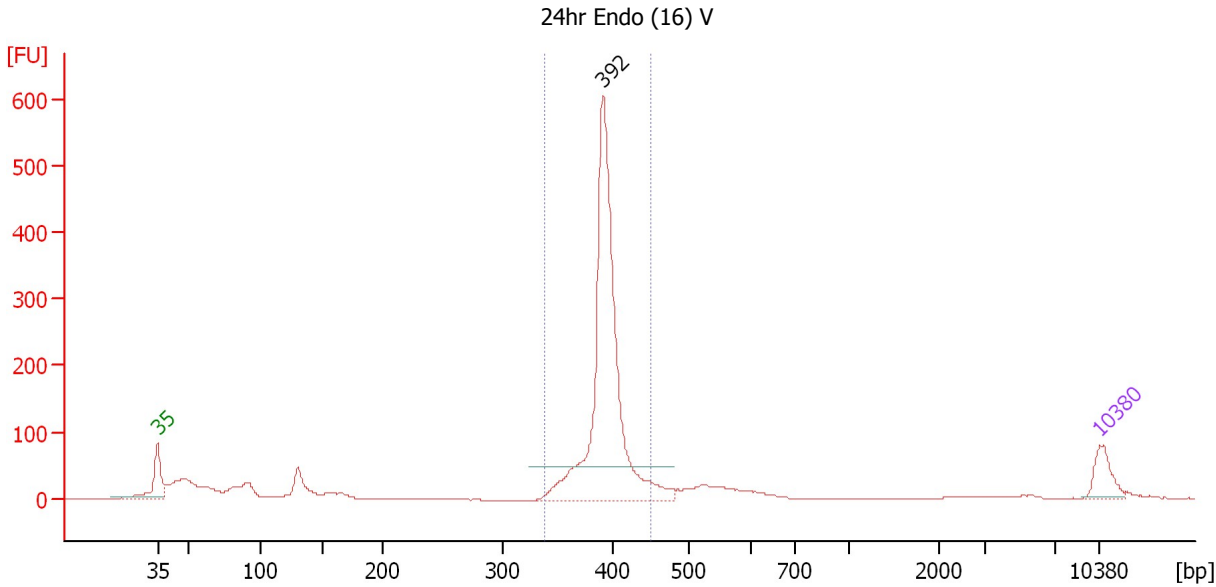
Region table for sample 5 : 24hr BF (16) V

From [bp]	To [bp]	Average Size [bp]	Molarity [pmol/l]	Conc. [pg/µl]	Corr. Area	% of Total	Size distribution in CV [%]	Color
340	455	399	4,005.5	1,054.46	1,018.5	56	4.3	Blue

Assay Class: High Sensitivity DNA Assay
 Data Path: C:\...ents and Settings\Bioanalyzer\2013-10-29\2013-10-29_001.xad

Created: 10/29/2013 10:23:15 AM
 Modified: 10/29/2013 11:10:13 AM

Electropherogram Summary Continued ...



Setpoint Deviations for sample 6 : 24hr Endo (16) V

Height Threshold [FU] : 50

Overall Results for sample 6 : 24hr Endo (16) V

Number of peaks found: 1 Corr. Area 1: 1,354.5
 Noise: 0.3

Peak table for sample 6 : 24hr Endo (16) V

Peak	Size [bp]	Conc. [pg/μl]	Molarity [pmol/l]	Observations
1	35	125.00	5,411.3	Lower Marker
2	392	1,442.62	5,580.0	
3	10,380	75.00	10.9	Upper Marker

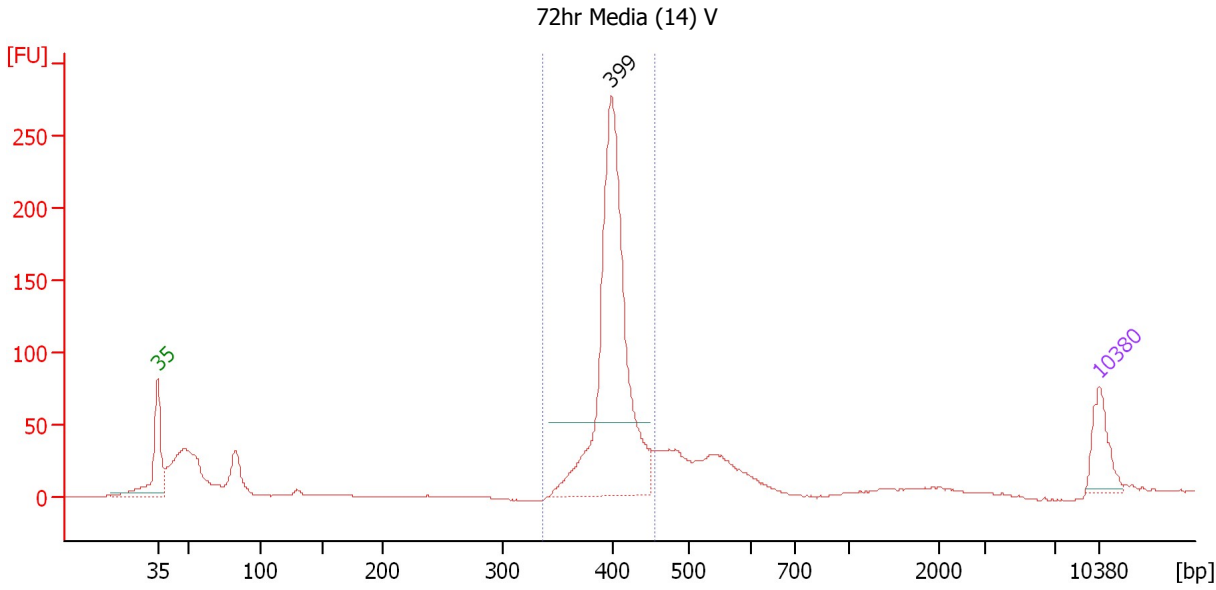
Region table for sample 6 : 24hr Endo (16) V

From [bp]	To [bp]	Average Size [bp]	Molarity [pmol/l]	Conc. [pg/μl]	Corr. Area	% of Total	Size distribution in CV [%]	Color
337	450	394	5,231.0	1,358.06	1,354.5	68	4.2	Blue

Assay Class: High Sensitivity DNA Assay
 Data Path: C:\...ents and Settings\Bioanalyzer\2013-10-29\2013-10-29_001.xad

Created: 10/29/2013 10:23:15 AM
 Modified: 10/29/2013 11:10:13 AM

Electropherogram Summary Continued ...



Setpoint Deviations for sample 7 : 72hr Media (14) V

Height Threshold [FU] : 50

Overall Results for sample 7 : 72hr Media (14) V

Number of peaks found: 1 Corr. Area 1: 785.6
 Noise: 0.3

Peak table for sample 7 : 72hr Media (14) V

Peak	Size [bp]	Conc. [pg/μl]	Molarity [pmol/l]	Observations
1	35	125.00	5,411.3	Lower Marker
2	399	926.96	3,516.9	
3	10,380	75.00	10.9	Upper Marker

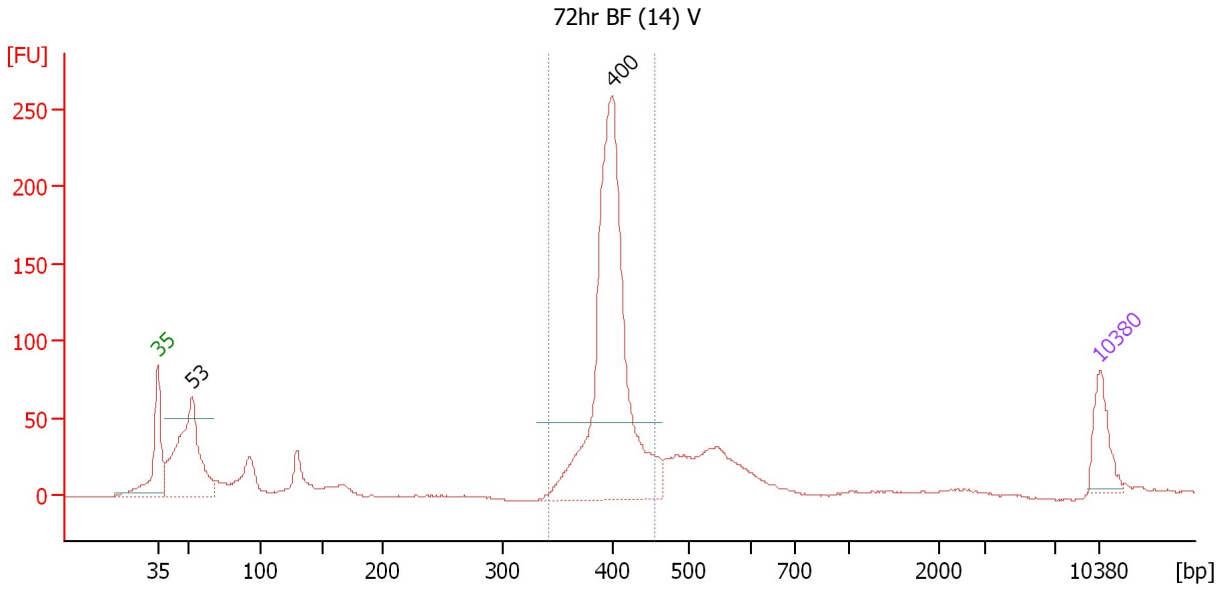
Region table for sample 7 : 72hr Media (14) V

From [bp]	To [bp]	Average Size [bp]	Molarity [pmol/l]	Conc. [pg/μl]	Corr. Area	% of Total	Size distribution in CV [%]	Color
336	457	403	3,522.3	935.95	785.6	60	4.6	Blue

Assay Class: High Sensitivity DNA Assay
 Data Path: C:\...ents and Settings\Bioanalyzer\2013-10-29\2013-10-29_001.xad

Created: 10/29/2013 10:23:15 AM
 Modified: 10/29/2013 11:10:13 AM

Electropherogram Summary Continued ...



Setpoint Deviations for sample 8 : 72hr BF (14) V

Height Threshold [FU] : 50

Overall Results for sample 8 : 72hr BF (14) V

Number of peaks found: 2 Corr. Area 1: 794.2
 Noise: 0.4

Peak table for sample 8 : 72hr BF (14) V

Peak	Size [bp]	Conc. [pg/μl]	Molarity [pmol/l]	Observations
1	35	125.00	5,411.3	Lower Marker
2	53	452.51	12,996.1	
3	400	1,008.32	3,821.3	
4	10,380	75.00	10.9	Upper Marker

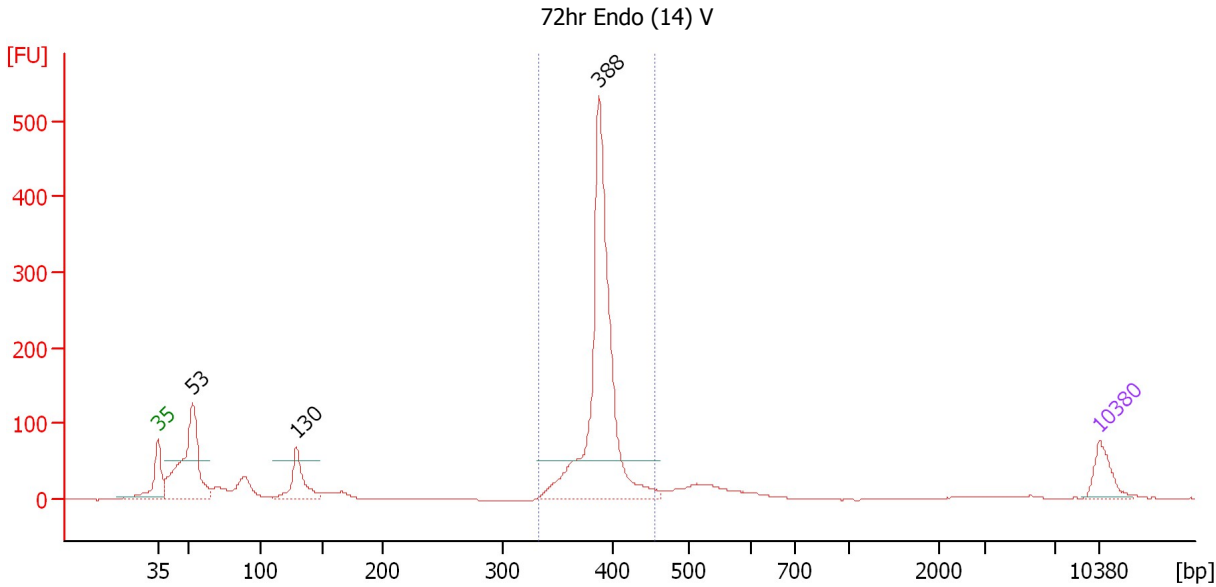
Region table for sample 8 : 72hr BF (14) V

From [bp]	To [bp]	Average Size [bp]	Molarity [pmol/l]	Conc. [pg/μl]	Corr. Area	% of Total	Size distribution in CV [%]	Color
342	457	400	3,564.7	939.84	794.2	54	4.6	Blue

Assay Class: High Sensitivity DNA Assay
 Data Path: C:\...ents and Settings\Bioanalyzer\2013-10-29\2013-10-29_001.xad

Created: 10/29/2013 10:23:15 AM
 Modified: 10/29/2013 11:10:13 AM

Electropherogram Summary Continued ...



Setpoint Deviations for sample 9 : 72hr Endo (14) V

Height Threshold [FU] : 50

Overall Results for sample 9 : 72hr Endo (14) V

Number of peaks found: 3 Corr. Area 1: 1,080.4
 Noise: 0.4

Peak table for sample 9 : 72hr Endo (14) V

Peak	Size [bp]	Conc. [pg/µl]	Molarity [pmol/l]	Observations
1	35	125.00	5,411.3	Lower Marker
2	53	601.27	17,226.7	
3	130	200.79	2,347.2	
4	388	1,191.92	4,658.2	
5	10,380	75.00	10.9	Upper Marker

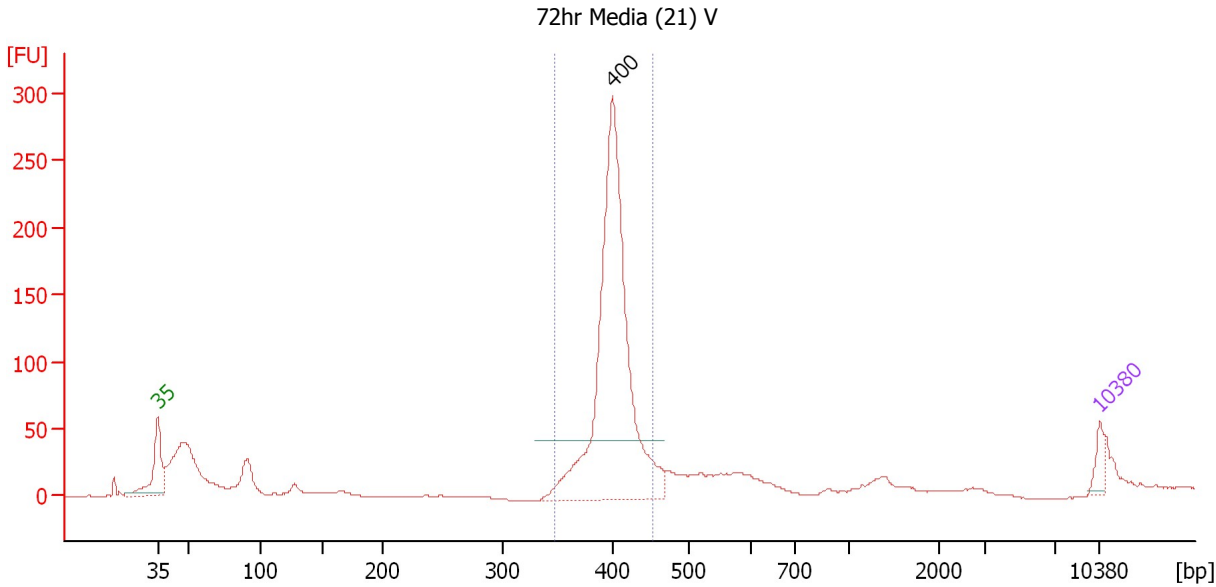
Region table for sample 9 : 72hr Endo (14) V

From [bp]	To [bp]	Average Size [bp]	Molarity [pmol/l]	Conc. [pg/µl]	Corr. Area	% of Total	Size distribution in CV [%]	Color
332	455	389	4,554.8	1,168.94	1,080.4	57	4.3	Blue

Assay Class: High Sensitivity DNA Assay
 Data Path: C:\...ents and Settings\Bioanalyzer\2013-10-29\2013-10-29_001.xad

Created: 10/29/2013 10:23:15 AM
 Modified: 10/29/2013 11:10:13 AM

Electropherogram Summary Continued ...



Setpoint Deviations for sample 10 : 72hr Media (21) V

Height Threshold [FU] : 45

Overall Results for sample 10 : 72hr Media (21) V

Number of peaks found: 1 Corr. Area 1: 836.5
 Noise: 0.3

Peak table for sample 10 : 72hr Media (21) V

Peak	Size [bp]	Conc. [pg/μl]	Molarity [pmol/l]	Observations
1	35	125.00	5,411.3	Lower Marker
2	400	2,811.35	10,640.3	
3	10,380	75.00	10.9	Upper Marker

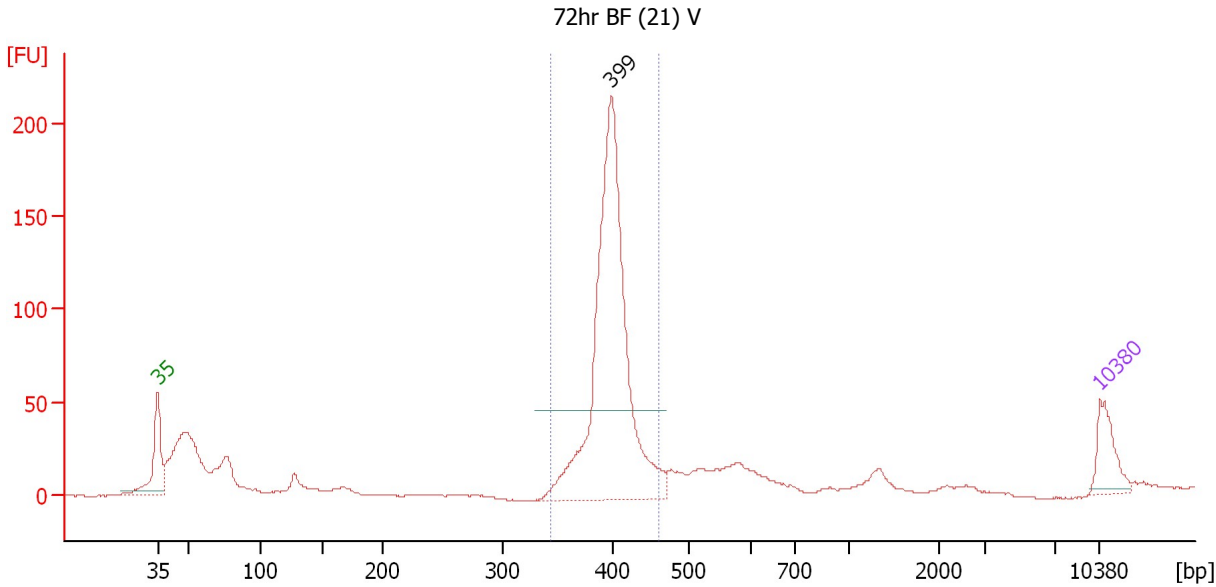
Region table for sample 10 : 72hr Media (21) V

From [bp]	To [bp]	Average Size [bp]	Molarity [pmol/l]	Conc. [pg/μl]	Corr. Area	% of Total	Size distribution in CV [%]	Color
347	453	402	9,704.1	2,571.74	836.5	59	4.4	Blue

Assay Class: High Sensitivity DNA Assay
 Data Path: C:\...ents and Settings\Bioanalyzer\2013-10-29\2013-10-29_001.xad

Created: 10/29/2013 10:23:15 AM
 Modified: 10/29/2013 11:10:13 AM

Electropherogram Summary Continued ...



Setpoint Deviations for sample 11 : 72hr BF (21) V

Height Threshold [FU] : 48

Overall Results for sample 11 : 72hr BF (21) V

Number of peaks found: 1 Corr. Area 1: 649.4
 Noise: 0.3

Peak table for sample 11 : 72hr BF (21) V

Peak	Size [bp]	Conc. [pg/μl]	Molarity [pmol/l]	Observations
1	35	125.00	5,411.3	Lower Marker
2	399	1,122.88	4,261.5	
3	10,380	75.00	10.9	Upper Marker

Region table for sample 11 : 72hr BF (21) V

From [bp]	To [bp]	Average Size [bp]	Molarity [pmol/l]	Conc. [pg/μl]	Corr. Area	% of Total	Size distribution in CV [%]	Color
343	461	400	3,922.5	1,034.61	649.4	59	4.7	Blue

Assay Class: High Sensitivity DNA Assay
Data Path: C:\...ents and Settings\Bioanalyzer\2013-10-29\2013-10-29_001.xad

Created: 10/29/2013 10:23:15 AM
Modified: 10/29/2013 11:10:13 AM

Gel Image

