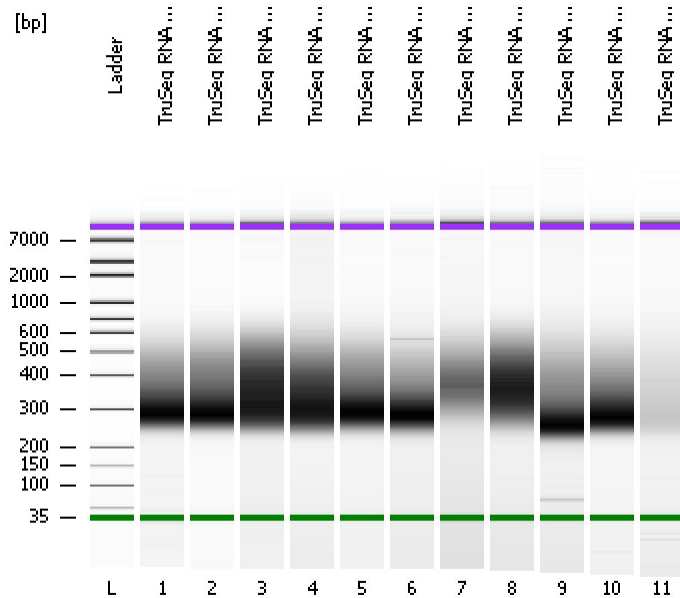


Assay Class: High Sensitivity DNA Assay  
Data Path: C:\...ents and Settings\Bioanalyzer\2013-10-29\2013-10-29\_004.xad

Created: 10/29/2013 1:27:53 PM  
Modified: 10/29/2013 2:14:29 PM

**Electrophoresis File Run Summary**



Instrument Information:

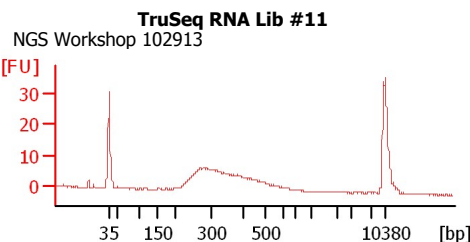
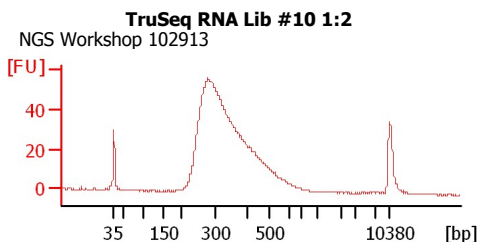
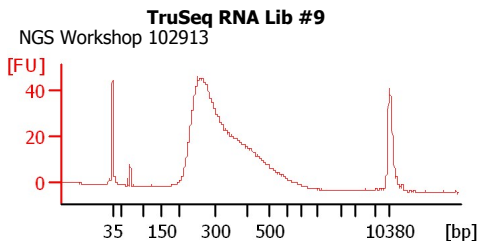
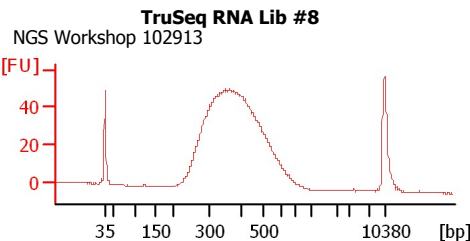
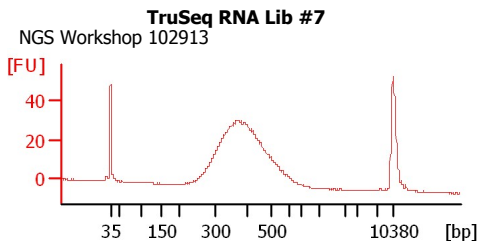
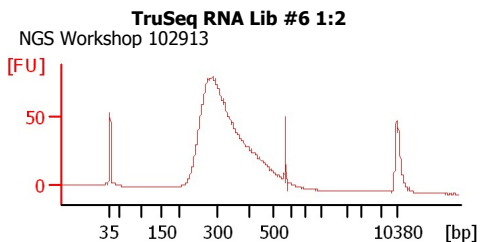
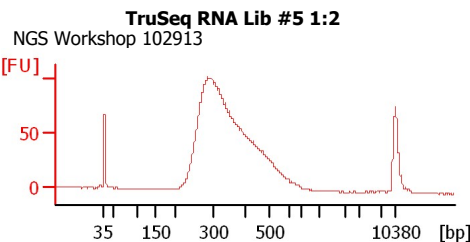
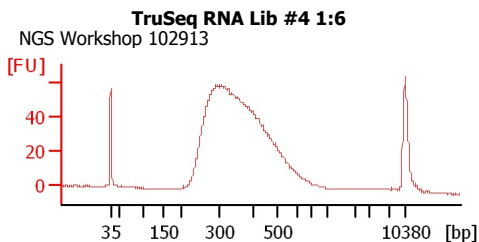
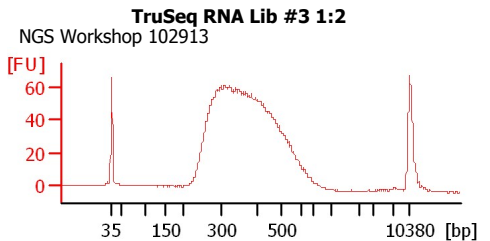
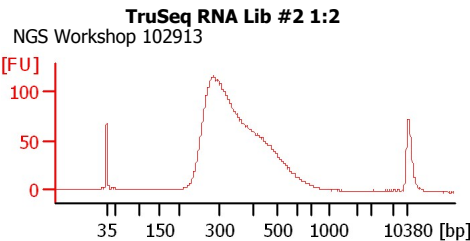
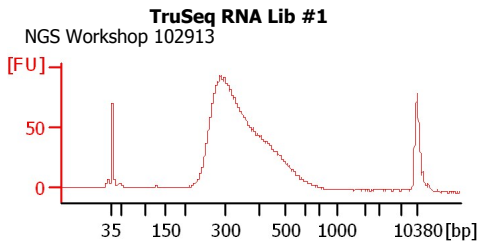
Instrument Name: DE13701086      Firmware: C.01.069  
Serial#: DE13701086      Type: G2938B

Assay Information:

Assay Origin Path: C:\Program Files\Agilent\2100 bioanalyzer\2100 expert\assays\dsDNA\High Sensitivity DNA.xsy  
Assay Class: High Sensitivity DNA Assay  
Version: 1.03  
Assay Comments: Copyright © 2003-2010 Agilent Technologies

Chip Information:

Chip Lot #:   
Reagent Kit Lot #:   
Chip Comments:



Assay Class: High Sensitivity DNA Assay  
 Data Path: C:\...ents and Settings\Bioanalyzer\2013-10-29\2013-10-29\_004.xad

Created: 10/29/2013 1:27:53 PM  
 Modified: 10/29/2013 2:14:29 PM

**Electrophoresis File Run Summary (Chip Summary)**

Sample Name	Sample Comment	Rest. Digest	Status	Observation	Result Label	Result Color
TruSeq RNA Lib #1	NGS Workshop 102913	<input type="checkbox"/>	✓			
TruSeq RNA Lib #2 1:2	NGS Workshop 102913	<input type="checkbox"/>	✓			
TruSeq RNA Lib #3 1:2	NGS Workshop 102913	<input type="checkbox"/>	✓			
TruSeq RNA Lib #4 1:6	NGS Workshop 102913	<input type="checkbox"/>	✓			
TruSeq RNA Lib #5 1:2	NGS Workshop 102913	<input type="checkbox"/>	✓			
TruSeq RNA Lib #6 1:2	NGS Workshop 102913	<input type="checkbox"/>	✓			
TruSeq RNA Lib #7	NGS Workshop 102913	<input type="checkbox"/>	✓			
TruSeq RNA Lib #8	NGS Workshop 102913	<input type="checkbox"/>	✓			
TruSeq RNA Lib #9	NGS Workshop 102913	<input type="checkbox"/>	✓			
TruSeq RNA Lib #10 1:2	NGS Workshop 102913	<input type="checkbox"/>	✓			
TruSeq RNA Lib #11	NGS Workshop 102913	<input type="checkbox"/>	✓			
Ladder		<input type="checkbox"/>	✓			

**Chip Lot #**

**Reagent Kit Lot #**

**Chip Comments :**

Assay Class: High Sensitivity DNA Assay  
Data Path: C:\...ents and Settings\Bioanalyzer\2013-10-29\2013-10-29\_004.xad

Created: 10/29/2013 1:27:53 PM  
Modified: 10/29/2013 2:14:29 PM

**Electrophoresis Assay Details**

**General Analysis Settings**

Number of Available Sample and Ladder Wells (Max.) : 12  
Minimum Visible Range [s] : 32  
Maximum Visible Range [s] : 138  
Start Analysis Time Range [s] : 33  
End Analysis Time Range [s] : 137.5  
Ladder Concentration [pg/μl] : 1950  
Uses Standard Area for Ladder Fragments  
Lower Marker Concentration [pg/μl] : 125  
Upper Marker Concentration [pg/μl] : 75  
Used Upper Marker for Quantitation  
Standard Curve Fit is Point to Point  
Show Data Aligned to Lower and Upper Marker

**Integrator Settings**

Integration Start Time [s] : 33.05  
Integration End Time [s] : 137  
Slope Threshold : 0.8  
Height Threshold [FU] : 5  
Area Threshold : 0.1  
Width Threshold [s] : 0.6  
Baseline Plateau [s] : 0.5

**Filter Settings**

Filter Width [s] : 0.5  
Polynomial Order : 4

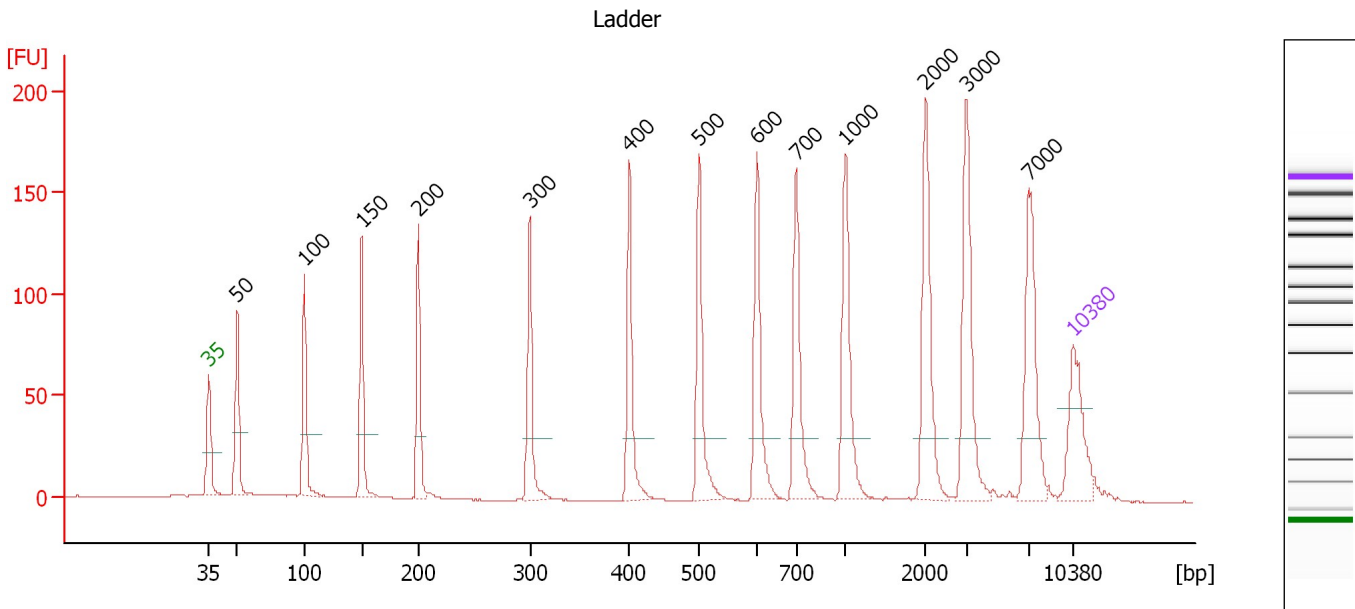
**Ladder**

Ladder Peak	Size	Area
1	35	160
2	50	210
3	100	208
4	150	221
5	200	242
6	300	270
7	400	305
8	500	306
9	600	336
10	700	321
11	1000	366
12	2000	413
13	3000	411
14	7000	400
15	10380	214

Assay Class: High Sensitivity DNA Assay  
 Data Path: C:\...ents and Settings\Bioanalyzer\2013-10-29\2013-10-29\_004.xad

Created: 10/29/2013 1:27:53 PM  
 Modified: 10/29/2013 2:14:29 PM

**Electropherogram Summary**



**Overall Results for Ladder**

Noise: 0.2

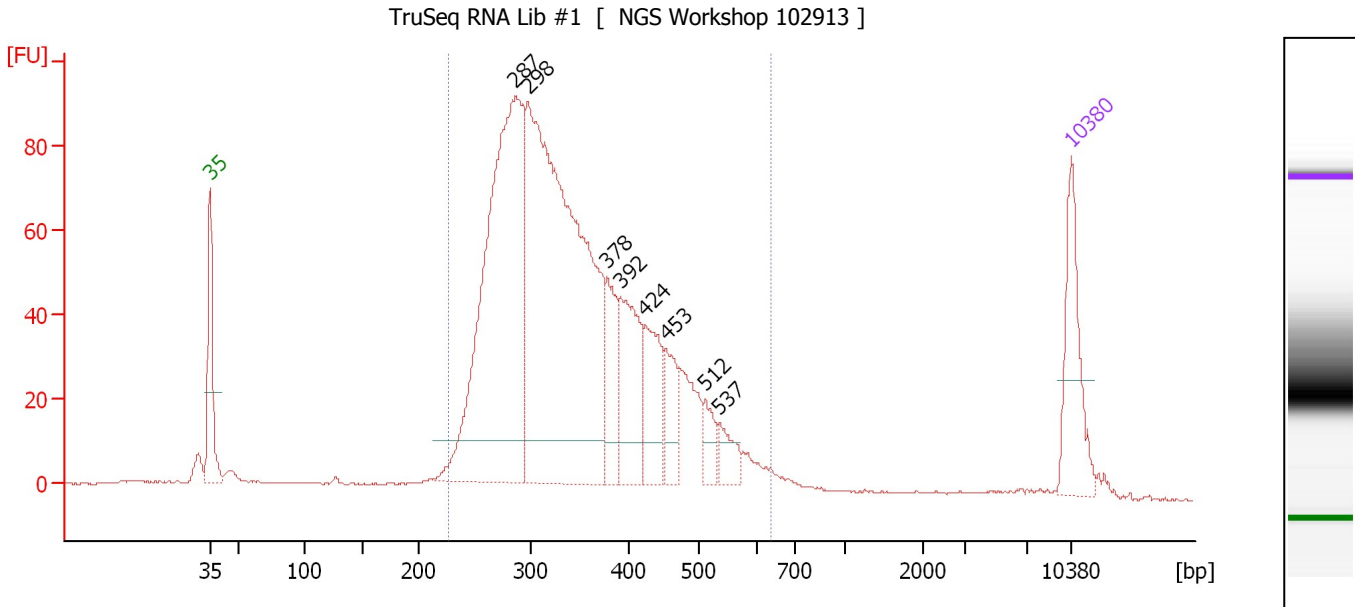
**Peak table for Ladder**

Peak	Size [bp]	Conc. [pg/μl]	Molarity [pmol/l]	Observations
1	35	125.00	5,411.3	Lower Marker
2	50	150.00	4,545.5	Ladder Peak
3	100	150.00	2,272.7	Ladder Peak
4	150	150.00	1,515.2	Ladder Peak
5	200	150.00	1,136.4	Ladder Peak
6	300	150.00	757.6	Ladder Peak
7	400	150.00	568.2	Ladder Peak
8	500	150.00	454.5	Ladder Peak
9	600	150.00	378.8	Ladder Peak
10	700	150.00	324.7	Ladder Peak
11	1,000	150.00	227.3	Ladder Peak
12	2,000	150.00	113.6	Ladder Peak
13	3,000	150.00	75.8	Ladder Peak
14	7,000	150.00	32.5	Ladder Peak
15	10,380	75.00	10.9	Upper Marker

Assay Class: High Sensitivity DNA Assay  
 Data Path: C:\...ents and Settings\Bioanalyzer\2013-10-29\2013-10-29\_004.xad

Created: 10/29/2013 1:27:53 PM  
 Modified: 10/29/2013 2:14:29 PM

**Electropherogram Summary Continued ...**



**Setpoint Deviations for sample 1 : TruSeq RNA Lib #1**

Height Threshold [FU] : 10

**Overall Results for sample 1 : TruSeq RNA Lib #1**

Number of peaks found: 8                      Corr. Area 1: 1,686.6  
 Noise: 0.2

**Peak table for sample 1 : TruSeq RNA Lib #1**

Peak	Size [bp]	Conc. [pg/µl]	Molarity [pmol/l]	Observations
1	35	125.00	5,411.3	Lower Marker
2	287	654.39	3,453.0	
3	298	846.88	4,303.1	
4	378	75.97	304.2	
5	392	126.52	488.5	
6	424	84.10	300.3	
7	453	50.92	170.2	
8	512	29.04	86.0	
9	537	27.26	77.0	
10	10,380	75.00	10.9	Upper Marker

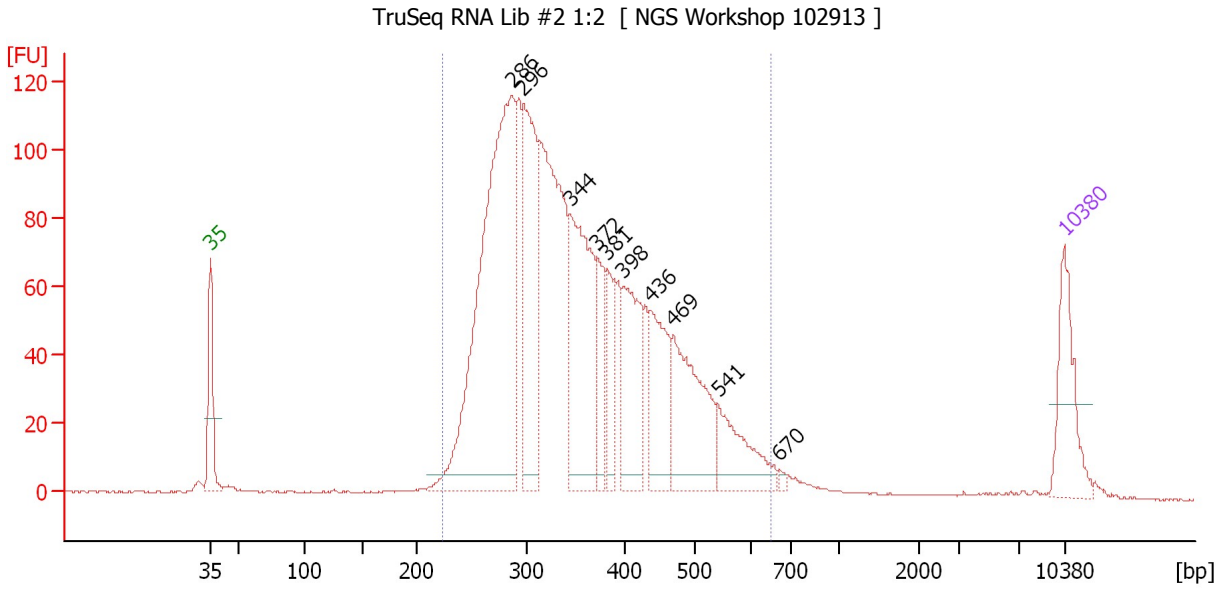
**Region table for sample 1 : TruSeq RNA Lib #1**

From [bp]	To [bp]	Average Size [bp]	Molarity [pmol/l]	Conc. [pg/µl]	Corr. Area	% of Total	Size distribution in CV [%]	Color
226	639	352	9,323.9	2,024.16	1,686.6	93	23.1	Blue

Assay Class: High Sensitivity DNA Assay  
 Data Path: C:\...ents and Settings\Bioanalyzer\2013-10-29\2013-10-29\_004.xad

Created: 10/29/2013 1:27:53 PM  
 Modified: 10/29/2013 2:14:29 PM

**Electropherogram Summary Continued ...**



**Overall Results for sample 2 : TruSeq RNA Lib #2 1:2**

Number of peaks found: 10                      Corr. Area 1: 2,245.1  
 Noise: 0.2

**Peak table for sample 2 : TruSeq RNA Lib #2 1:2**

Peak	Size [bp]	Conc. [pg/μl]	Molarity [pmol/l]	Observations
1	35	125.00	5,411.3	Lower Marker
2	286	719.06	3,807.3	
3	296	265.22	1,358.3	
4	344	270.73	1,193.2	
5	372	63.44	258.7	
6	381	58.82	233.7	
7	398	150.12	571.2	
8	436	127.45	443.1	
9	469	178.21	576.0	
10	541	89.49	250.8	
11	670	4.38	9.9	
12	10,380	75.00	10.9	Upper Marker

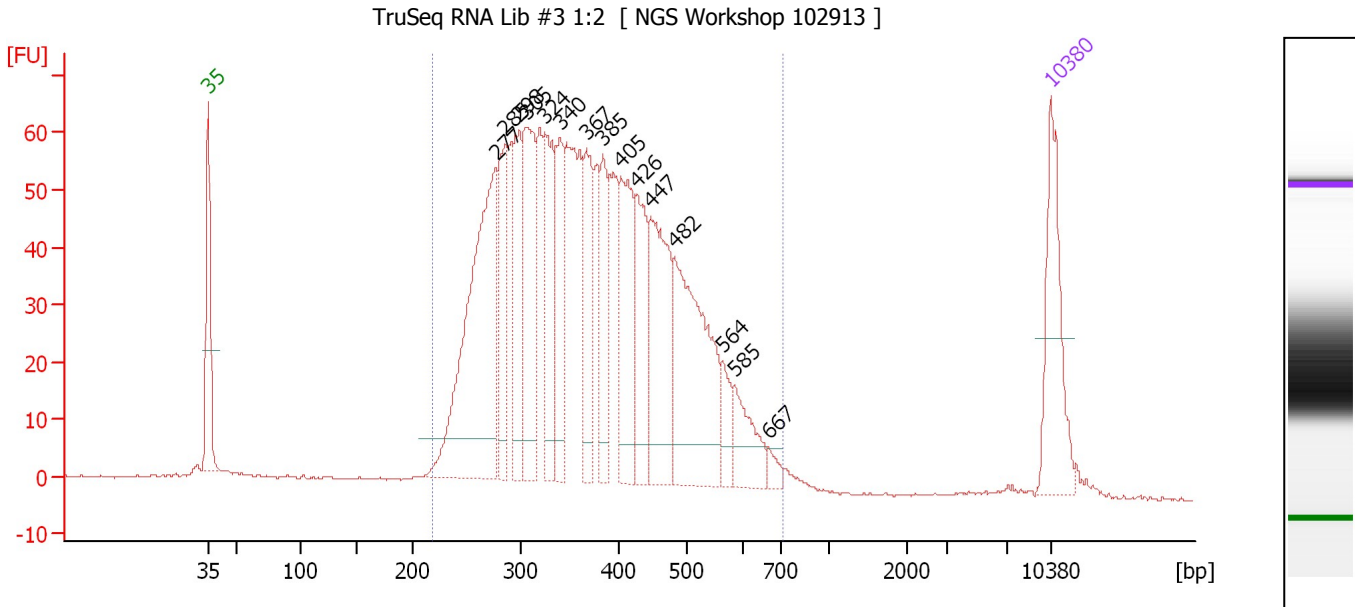
**Region table for sample 2 : TruSeq RNA Lib #2 1:2**

From [bp]	To [bp]	Average Size [bp]	Molarity [pmol/l]	Conc. [pg/μl]	Corr. Area	% of Total	Size distribution in CV [%]	Color
222	651	359	11,935.3	2,619.02	2,245.1	95	24.4	Blue

Assay Class: High Sensitivity DNA Assay  
 Data Path: C:\...ents and Settings\Bioanalyzer\2013-10-29\2013-10-29\_004.xad

Created: 10/29/2013 1:27:53 PM  
 Modified: 10/29/2013 2:14:29 PM

**Electropherogram Summary Continued ...**



**Setpoint Deviations for sample 3 : TruSeq RNA Lib #3 1:2**

Height Threshold [FU] : 7

**Overall Results for sample 3 : TruSeq RNA Lib #3 1:2**

Number of peaks found: 15                      Corr. Area 1: 1,616.0  
 Noise: 0.2

**Peak table for sample 3 : TruSeq RNA Lib #3 1:2**

Peak	Size [bp]	Conc. [pg/μl]	Molarity [pmol/l]	Observations
1	35	125.00	5,411.3	Lower Marker
2	277	331.34	1,815.3	
3	285	94.12	499.7	
4	298	101.53	516.0	
5	305	146.64	728.3	
6	324	110.28	515.1	
7	340	80.52	359.0	
8	367	85.99	354.6	
9	385	68.05	268.2	
10	405	107.99	404.4	
11	426	88.46	314.3	
12	447	137.13	464.4	
13	482	196.81	618.2	
14	564	24.72	66.4	
15	585	47.18	122.2	
16	667	9.14	20.8	
17	10,380	75.00	10.9	Upper Marker

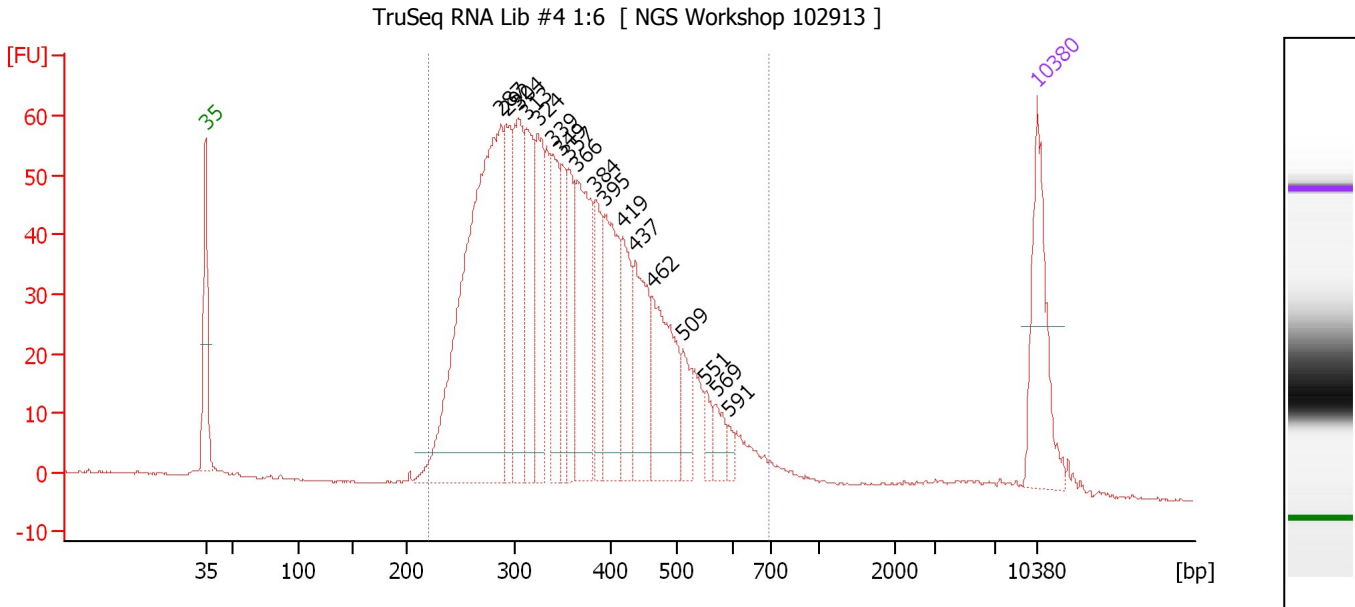
**Region table for sample 3 : TruSeq RNA Lib #3 1:2**

From [bp]	To [bp]	Average Size [bp]	Molarity [pmol/l]	Conc. [pg/μl]	Corr. Area	% of Total	Size distribution in CV [%]	Color
218	713	381	9,302.9	2,141.08	1,616.0	96	25.4	Blue

Assay Class: High Sensitivity DNA Assay  
 Data Path: C:\...ents and Settings\Bioanalyzer\2013-10-29\2013-10-29\_004.xad

Created: 10/29/2013 1:27:53 PM  
 Modified: 10/29/2013 2:14:29 PM

**Electropherogram Summary Continued ...**



**Overall Results for sample 4 : TruSeq RNA Lib #4 1:6**

Number of peaks found: 18                      Corr. Area 1: 1,414.6  
 Noise: 0.1

**Peak table for sample 4 : TruSeq RNA Lib #4 1:6**

Peak	Size [bp]	Conc. [pg/μl]	Molarity [pmol/l]	Observations
1	35	125.00	5,411.3	Lower Marker
2	287	515.36	2,721.6	
3	292	90.93	472.0	
4	304	124.19	618.4	
5	313	101.52	492.0	
6	324	96.72	451.8	
7	339	93.13	415.7	
8	349	65.38	283.9	
9	357	58.27	247.4	
10	366	137.08	567.9	
11	384	60.46	238.5	
12	395	109.24	419.3	
13	419	63.30	228.7	
14	437	91.08	316.0	
15	462	112.10	367.7	
16	509	30.79	91.6	
17	551	14.94	41.1	
18	569	18.15	48.3	
19	591	7.39	18.9	
20	10,380	75.00	10.9	Upper Marker

**Region table for sample 4 : TruSeq RNA Lib #4 1:6**

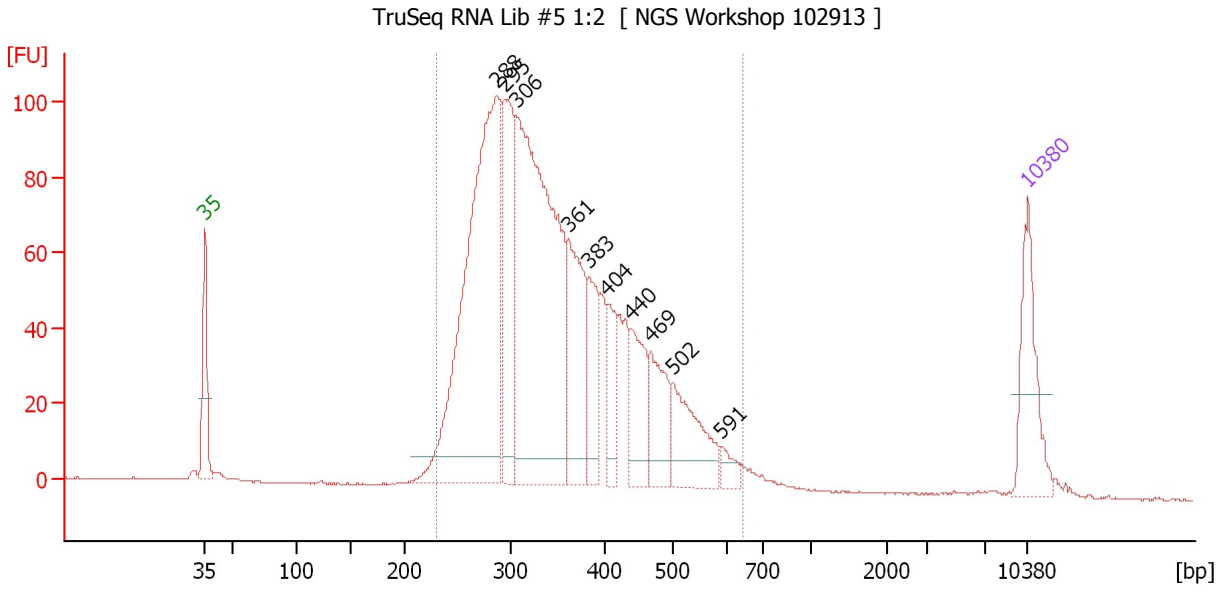
From [bp]	To [bp]	Average Size [bp]	Molarity [pmol/l]	Conc. [pg/μl]	Corr. Area	% of Total	Size distribution in CV [%]	Color
219	697	367	8,926.1	1,989.09	1,414.6	96	25.3	Blue



Assay Class: High Sensitivity DNA Assay  
 Data Path: C:\...ents and Settings\Bioanalyzer\2013-10-29\2013-10-29\_004.xad

Created: 10/29/2013 1:27:53 PM  
 Modified: 10/29/2013 2:14:29 PM

**Electropherogram Summary Continued ...**



**Setpoint Deviations for sample 5 : TruSeq RNA Lib #5 1:2**

Height Threshold [FU] : 7

**Overall Results for sample 5 : TruSeq RNA Lib #5 1:2**

Number of peaks found: 10                      Corr. Area 1: 1,898.7  
 Noise: 0.1

**Peak table for sample 5 : TruSeq RNA Lib #5 1:2**

Peak	Size [bp]	Conc. [pg/μl]	Molarity [pmol/l]	Observations
1	35	125.00	5,411.3	Lower Marker
2	288	631.97	3,327.7	
3	295	195.85	1,005.0	
4	306	616.96	3,055.1	
5	361	154.22	646.7	
6	383	77.53	306.5	
7	404	56.38	211.3	
8	440	83.30	286.8	
9	469	81.59	263.7	
10	502	98.06	296.2	
11	591	16.47	42.2	
12	10,380	75.00	10.9	Upper Marker

**Region table for sample 5 : TruSeq RNA Lib #5 1:2**

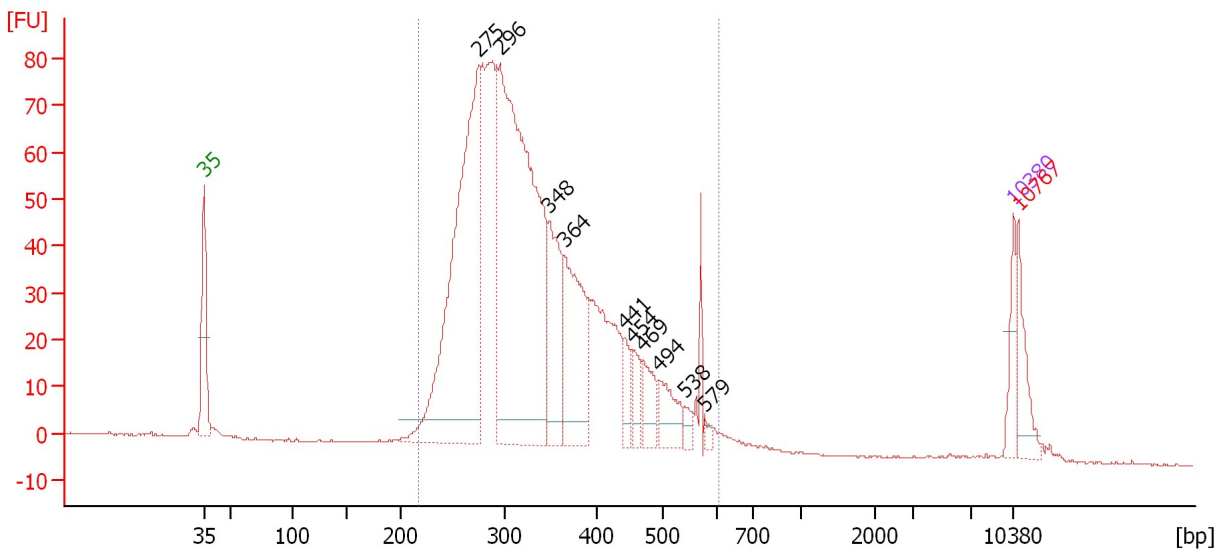
From [bp]	To [bp]	Average Size [bp]	Molarity [pmol/l]	Conc. [pg/μl]	Corr. Area	% of Total	Size distribution in CV [%]	Color
230	643	354	9,859.4	2,150.55	1,898.6	97	23.5	Blue

Assay Class: High Sensitivity DNA Assay  
 Data Path: C:\...ents and Settings\Bioanalyzer\2013-10-29\2013-10-29\_004.xad

Created: 10/29/2013 1:27:53 PM  
 Modified: 10/29/2013 2:14:29 PM

**Electropherogram Summary Continued ...**

TruSeq RNA Lib #6 1:2 [ NGS Workshop 102913 ]



**Overall Results for sample 6 : TruSeq RNA Lib #6 1:2**

Number of peaks found: 10                      Corr. Area 1: 1,352.0  
 Noise: 0.1

**Peak table for sample 6 : TruSeq RNA Lib #6 1:2**

Peak	Size [bp]	Conc. [pg/μl]	Molarity [pmol/l]	Observations
1	35	125.00	5,411.3	Lower Marker
2	275	1,336.83	7,363.0	
3	296	1,715.28	8,778.9	
4	348	299.83	1,306.2	
5	364	404.69	1,685.1	
6	441	66.32	228.1	
7	454	67.58	225.4	
8	469	94.46	305.3	
9	494	109.29	335.3	
10	538	29.50	83.1	
11	579	12.27	32.1	
12	10,380	75.00	10.9	Upper Marker
13	10,767	0.00	0.0	excluded peak

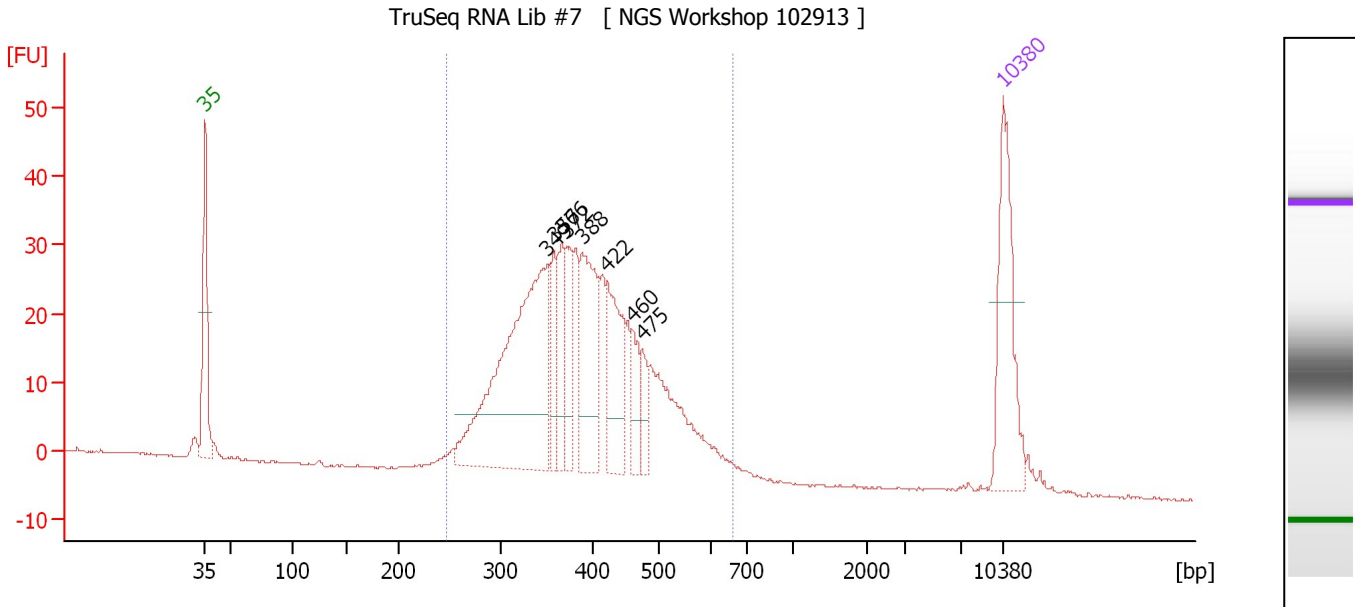
**Region table for sample 6 : TruSeq RNA Lib #6 1:2**

From [bp]	To [bp]	Average Size [bp]	Molarity [pmol/l]	Conc. [pg/μl]	Corr. Area	% of Total	Size distribution in CV [%]	Color
217	607	339	25,799.3	5,408.15	1,352.0	94	23.2	Blue

Assay Class: High Sensitivity DNA Assay  
 Data Path: C:\...ents and Settings\Bioanalyzer\2013-10-29\2013-10-29\_004.xad

Created: 10/29/2013 1:27:53 PM  
 Modified: 10/29/2013 2:14:29 PM

**Electropherogram Summary Continued ...**



**Setpoint Deviations for sample 7 : TruSeq RNA Lib #7**

Height Threshold [FU] : 8

**Overall Results for sample 7 : TruSeq RNA Lib #7**

Number of peaks found: 8                      Corr. Area 1: 584.4  
 Noise: 0.1

**Peak table for sample 7 : TruSeq RNA Lib #7**

Peak	Size [bp]	Conc. [pg/μl]	Molarity [pmol/l]	Observations
1	35	125.00	5,411.3	Lower Marker
2	349	292.53	1,270.2	
3	357	39.63	168.2	
4	366	43.56	180.4	
5	372	46.34	188.9	
6	388	100.16	391.2	
7	422	76.05	273.3	
8	460	28.15	92.7	
9	475	18.81	60.0	
10	10,380	75.00	10.9	Upper Marker

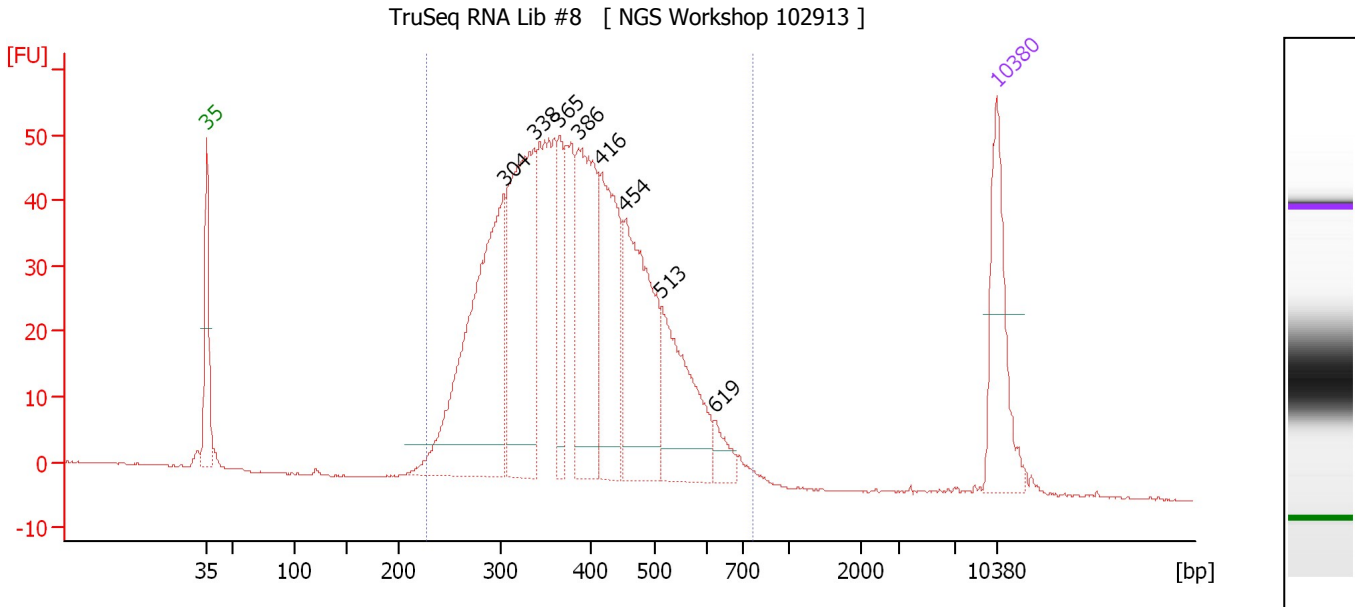
**Region table for sample 7 : TruSeq RNA Lib #7**

From [bp]	To [bp]	Average Size [bp]	Molarity [pmol/l]	Conc. [pg/μl]	Corr. Area	% of Total	Size distribution in CV [%]	Color
247	657	396	3,570.1	886.70	584.4	96	19.9	Blue

Assay Class: High Sensitivity DNA Assay  
 Data Path: C:\...ents and Settings\Bioanalyzer\2013-10-29\2013-10-29\_004.xad

Created: 10/29/2013 1:27:53 PM  
 Modified: 10/29/2013 2:14:29 PM

**Electropherogram Summary Continued ...**



**Overall Results for sample 8 : TruSeq RNA Lib #8**

Number of peaks found: 8                      Corr. Area 1: 1,165.5  
 Noise: 0.1

**Peak table for sample 8 : TruSeq RNA Lib #8**

Peak	Size [bp]	Conc. [pg/μl]	Molarity [pmol/l]	Observations
1	35	125.00	5,411.3	Lower Marker
2	304	340.11	1,694.5	
3	338	255.81	1,147.9	
4	365	59.28	245.8	
5	386	181.44	711.3	
6	416	148.11	539.7	
7	454	184.93	617.3	
8	513	129.12	381.6	
9	619	18.39	45.0	
10	10,380	75.00	10.9	Upper Marker

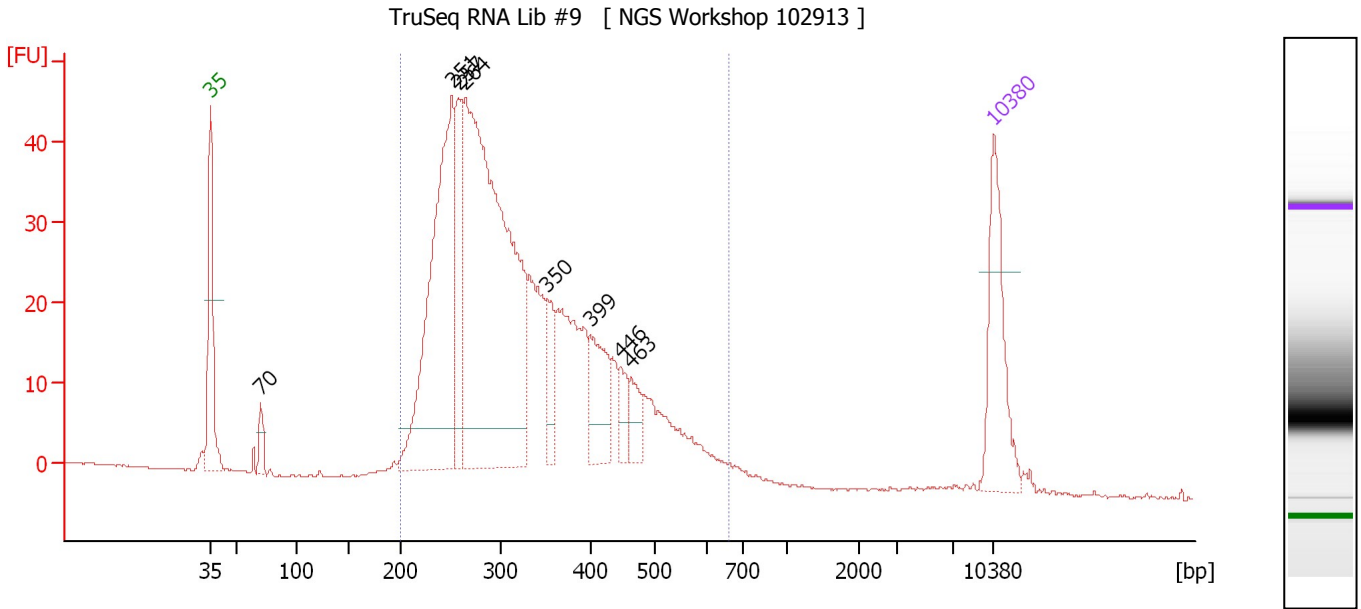
**Region table for sample 8 : TruSeq RNA Lib #8**

From [bp]	To [bp]	Average Size [bp]	Molarity [pmol/l]	Conc. [pg/μl]	Corr. Area	% of Total	Size distribution in CV [%]	Color
228	764	392	6,756.8	1,625.46	1,165.5	98	23.6	Blue

Assay Class: High Sensitivity DNA Assay  
 Data Path: C:\...ents and Settings\Bioanalyzer\2013-10-29\2013-10-29\_004.xad

Created: 10/29/2013 1:27:53 PM  
 Modified: 10/29/2013 2:14:29 PM

**Electropherogram Summary Continued ...**



**Overall Results for sample 9 : TruSeq RNA Lib #9**

Number of peaks found: 8                      Corr. Area 1: 822.2  
 Noise: 0.1

**Peak table for sample 9 : TruSeq RNA Lib #9**

Peak	Size [bp]	Conc. [pg/μl]	Molarity [pmol/l]	Observations
1	35	125.00	5,411.3	Lower Marker
2	70	21.55	465.6	
3	251	354.49	2,138.7	
4	257	98.38	578.9	
5	264	627.06	3,594.3	
6	350	42.23	182.8	
7	399	61.45	233.5	
8	446	21.73	73.8	
9	463	23.19	75.8	
10	10,380	75.00	10.9	Upper Marker

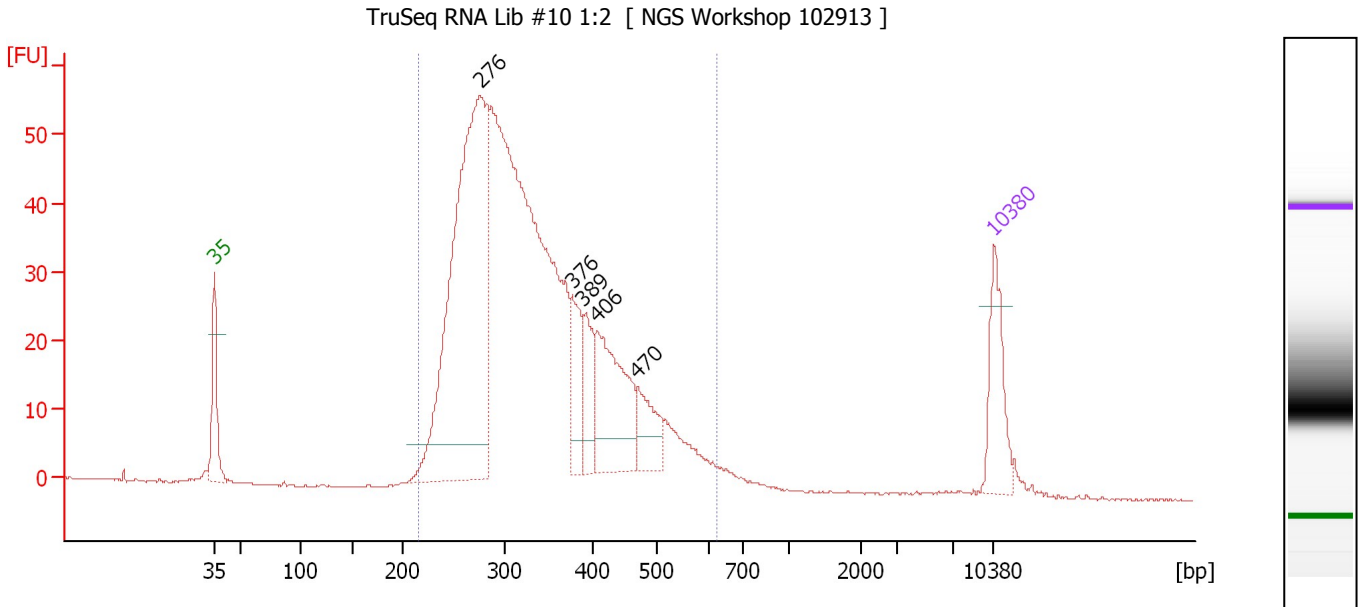
**Region table for sample 9 : TruSeq RNA Lib #9**

From [bp]	To [bp]	Average Size [bp]	Molarity [pmol/l]	Conc. [pg/μl]	Corr. Area	% of Total	Size distribution in CV [%]	Color
200	661	330	8,220.1	1,641.05	822.2	97	27.1	Blue

Assay Class: High Sensitivity DNA Assay  
 Data Path: C:\...ents and Settings\Bioanalyzer\2013-10-29\2013-10-29\_004.xad

Created: 10/29/2013 1:27:53 PM  
 Modified: 10/29/2013 2:14:29 PM

**Electropherogram Summary Continued ...**



**Overall Results for sample 10 : TruSeq RNA Lib #10 1:2**

Number of peaks found: 5                      Corr. Area 1: 964.3  
 Noise: 0.1

**Peak table for sample 10 : TruSeq RNA Lib #10 1:2**

Peak	Size [bp]	Conc. [pg/μl]	Molarity [pmol/l]	Observations
1	35	125.00	5,411.3	Lower Marker
2	276	851.96	4,674.4	
3	376	87.98	354.2	
4	389	69.98	272.3	
5	406	187.49	699.5	
6	470	67.01	216.0	
7	10,380	75.00	10.9	Upper Marker

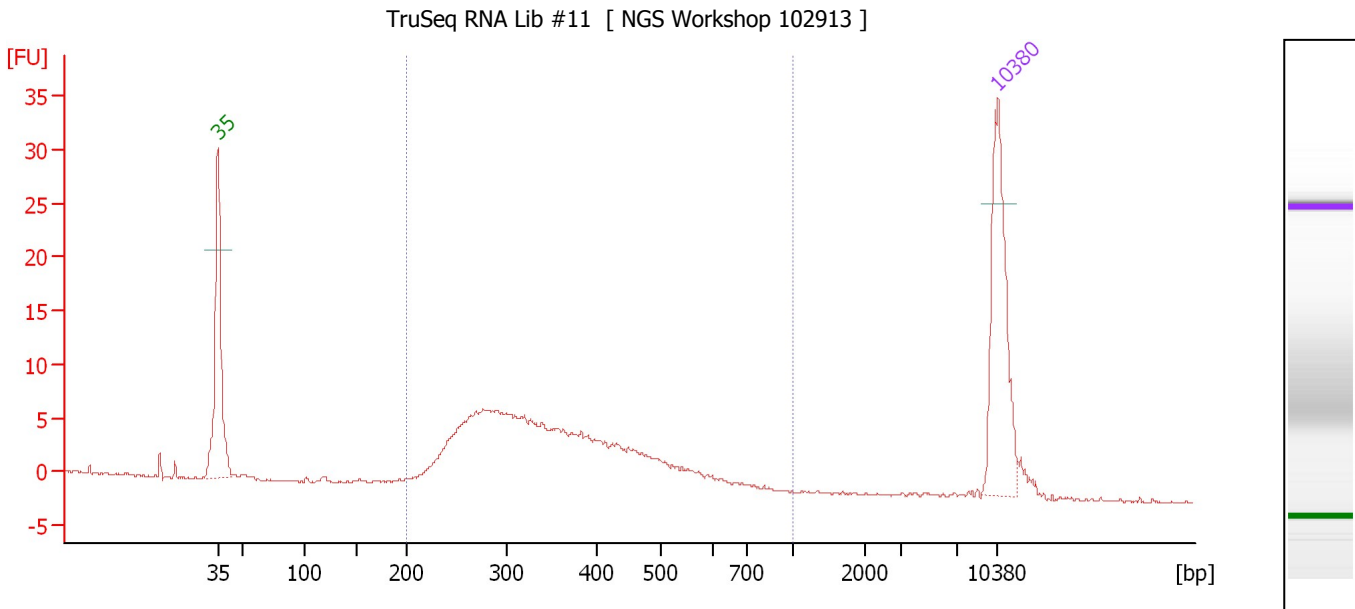
**Region table for sample 10 : TruSeq RNA Lib #10 1:2**

From [bp]	To [bp]	Average Size [bp]	Molarity [pmol/l]	Conc. [pg/μl]	Corr. Area	% of Total	Size distribution in CV [%]	Color
215	622	339	12,235.6	2,558.14	964.3	97	23.7	Blue

Assay Class: High Sensitivity DNA Assay  
 Data Path: C:\...ents and Settings\Bioanalyzer\2013-10-29\2013-10-29\_004.xad

Created: 10/29/2013 1:27:53 PM  
 Modified: 10/29/2013 2:14:29 PM

**Electropherogram Summary Continued ...**



**Overall Results for sample 11 : TruSeq RNA Lib #11**

Number of peaks found: 0                      Corr. Area 1: 149.2  
 Noise: 0.1

**Peak table for sample 11 : TruSeq RNA Lib #11**

Peak	Size [bp]	Conc. [pg/μl]	Molarity [pmol/l]	Observations
1	35	125.00	5,411.3	Lower Marker
2	10,380	75.00	10.9	Upper Marker

**Region table for sample 11 : TruSeq RNA Lib #11**

From [bp]	To [bp]	Average Size [bp]	Molarity [pmol/l]	Conc. [pg/μl]	Corr. Area	% of Total	Size distribution in CV [%]	Color
200	1,000	361	1,622.5	351.01	149.2	96	28.2	Blue

Assay Class: High Sensitivity DNA Assay  
Data Path: C:\...ents and Settings\Bioanalyzer\2013-10-29\2013-10-29\_004.xad

Created: 10/29/2013 1:27:53 PM  
Modified: 10/29/2013 2:14:29 PM

**Gel Image**

