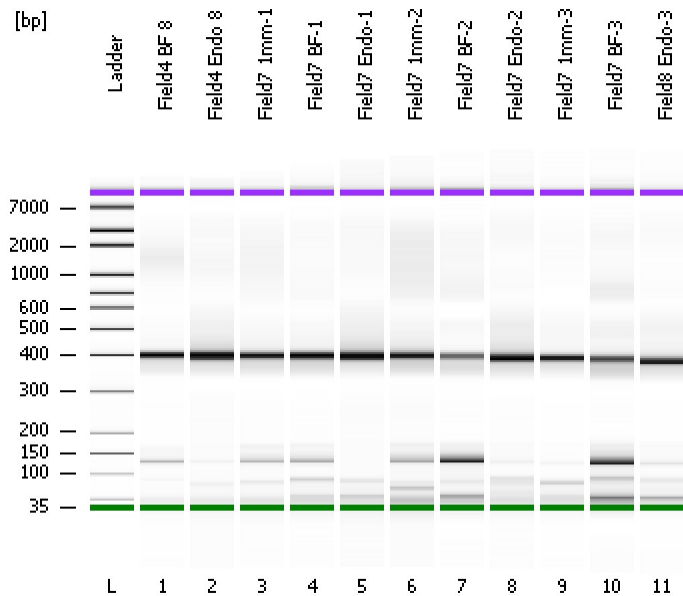


Assay Class: High Sensitivity DNA Assay
Data Path: C:\...ents and Settings\Bioanalyzer\2013-10-29\2013-10-29_006.xad

Created: 10/29/2013 3:10:19 PM
Modified: 10/29/2013 3:52:40 PM

Electrophoresis File Run Summary



Instrument Information:

Instrument Name: DE13701086 Firmware: C.01.069
Serial#: DE13701086 Type: G2938B

Assay Information:

Assay Origin Path: C:\Program Files\Agilent\2100 bioanalyzer\2100 expert\assays\dsDNA\High Sensitivity DNA.xsy
Assay Class: High Sensitivity DNA Assay
Version: 1.03
Assay Comments: Copyright © 2003-2010 Agilent Technologies

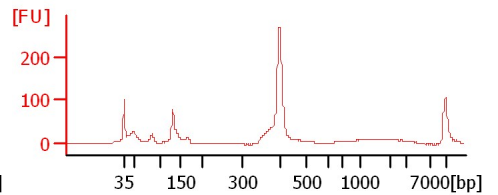
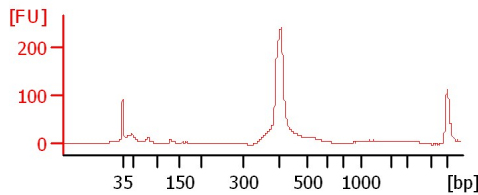
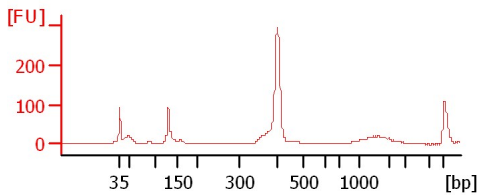
Chip Information:

Chip Lot #:
Reagent Kit Lot #:
Chip Comments:

Field4 BF 8

Field4 Endo 8

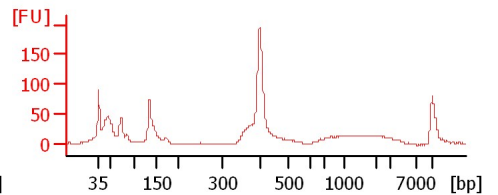
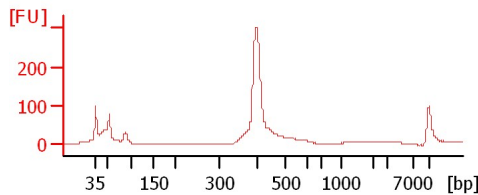
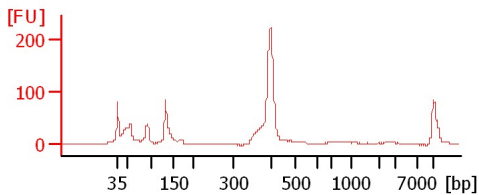
Field7 1mm-1



Field7 BF-1

Field7 Endo-1

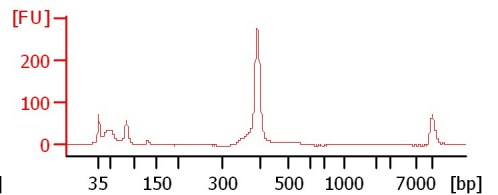
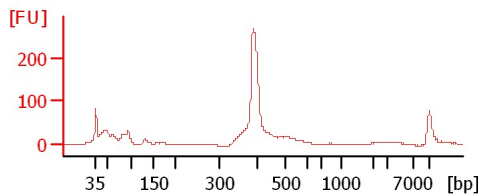
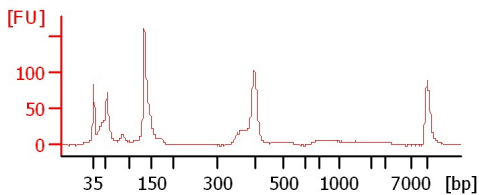
Field7 1mm-2



Field7 BF-2

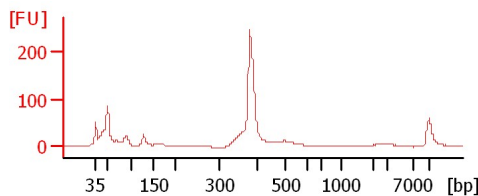
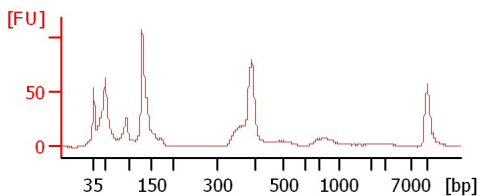
Field7 Endo-2

Field7 1mm-3



Field7 BF-3

Field8 Endo-3



Assay Class: High Sensitivity DNA Assay
 Data Path: C:\...ents and Settings\Bioanalyzer\2013-10-29\2013-10-29_006.xad

Created: 10/29/2013 3:10:19 PM
 Modified: 10/29/2013 3:52:40 PM

Electrophoresis File Run Summary (Chip Summary)

Sample Name	Sample Comment	Rest. Digest	Status	Observation	Result Label	Result Color
Field4 BF 8		<input type="checkbox"/>	✓			
Field4 Endo 8		<input type="checkbox"/>	✓			
Field7 1mm-1		<input type="checkbox"/>	✓			
Field7 BF-1		<input type="checkbox"/>	✓			
Field7 Endo-1		<input type="checkbox"/>	✓			
Field7 1mm-2		<input type="checkbox"/>	✓			
Field7 BF-2		<input type="checkbox"/>	✓			
Field7 Endo-2		<input type="checkbox"/>	✓			
Field7 1mm-3		<input type="checkbox"/>	✓			
Field7 BF-3		<input type="checkbox"/>	✓			
Field8 Endo-3		<input type="checkbox"/>	✓			
Ladder		<input type="checkbox"/>	✓			

Chip Lot #

Reagent Kit Lot #

Chip Comments :

Assay Class: High Sensitivity DNA Assay
Data Path: C:\...ents and Settings\Bioanalyzer\2013-10-29\2013-10-29_006.xad

Created: 10/29/2013 3:10:19 PM
Modified: 10/29/2013 3:52:40 PM

Electrophoresis Assay Details

General Analysis Settings

Number of Available Sample and Ladder Wells (Max.) : 12
Minimum Visible Range [s] : 32
Maximum Visible Range [s] : 138
Start Analysis Time Range [s] : 33
End Analysis Time Range [s] : 137.5
Ladder Concentration [pg/μl] : 1950
Uses Standard Area for Ladder Fragments
Lower Marker Concentration [pg/μl] : 125
Upper Marker Concentration [pg/μl] : 75
Used Upper Marker for Quantitation
Standard Curve Fit is Point to Point
Show Data Aligned to Lower and Upper Marker

Integrator Settings

Integration Start Time [s] : 33.05
Integration End Time [s] : 137
Slope Threshold : 0.8
Height Threshold [FU] : 5
Area Threshold : 0.1
Width Threshold [s] : 0.6
Baseline Plateau [s] : 0.5

Filter Settings

Filter Width [s] : 0.5
Polynomial Order : 4

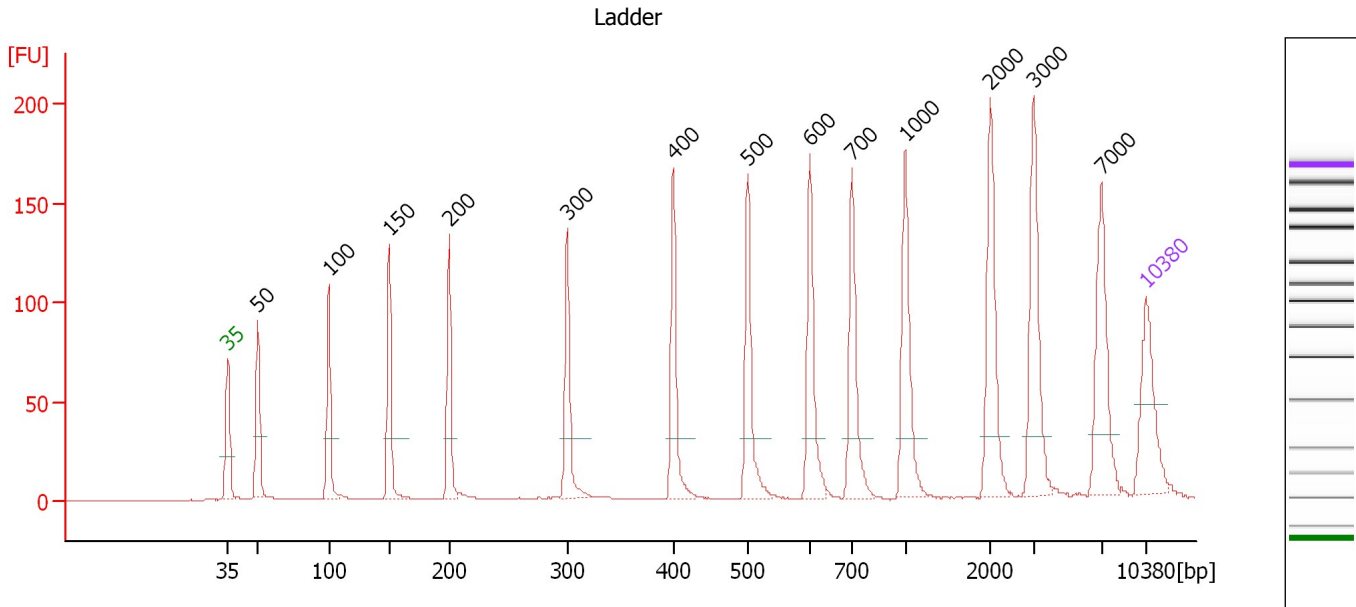
Ladder

Ladder Peak	Size	Area
1	35	160
2	50	210
3	100	208
4	150	221
5	200	242
6	300	270
7	400	305
8	500	306
9	600	336
10	700	321
11	1000	366
12	2000	413
13	3000	411
14	7000	400
15	10380	214

Assay Class: High Sensitivity DNA Assay
 Data Path: C:\...ents and Settings\Bioanalyzer\2013-10-29\2013-10-29_006.xad

Created: 10/29/2013 3:10:19 PM
 Modified: 10/29/2013 3:52:40 PM

Electropherogram Summary



Overall Results for Ladder

Noise: 0.2

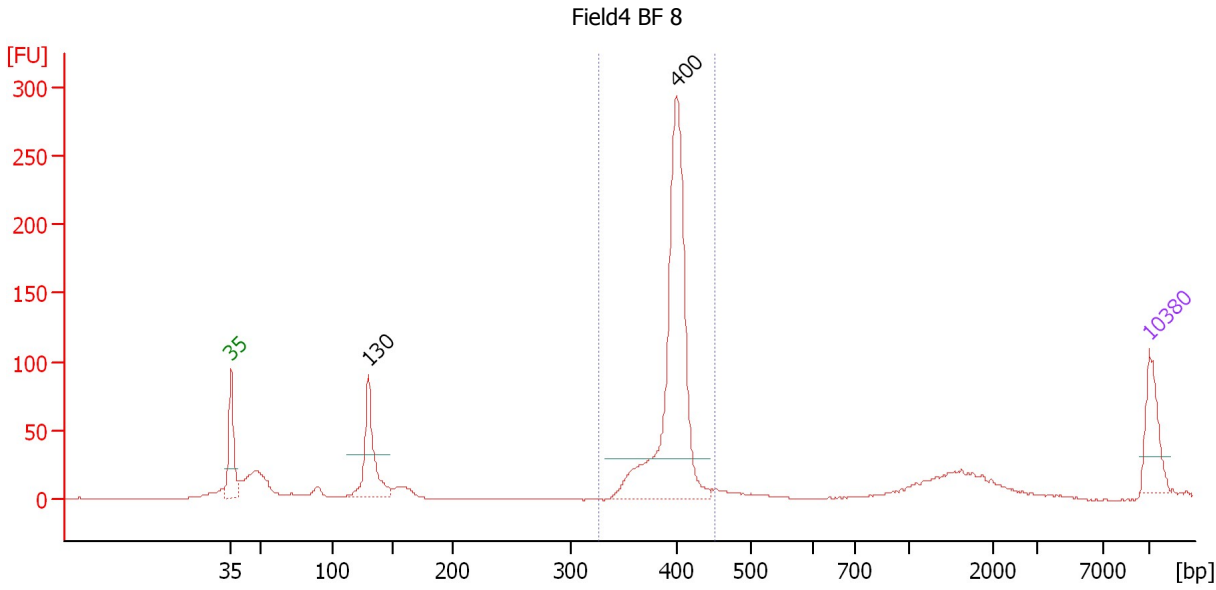
Peak table for Ladder

Peak	Size [bp]	Conc. [pg/μl]	Molarity [pmol/l]	Observations
1	35	125.00	5,411.3	Lower Marker
2	50	150.00	4,545.5	Ladder Peak
3	100	150.00	2,272.7	Ladder Peak
4	150	150.00	1,515.2	Ladder Peak
5	200	150.00	1,136.4	Ladder Peak
6	300	150.00	757.6	Ladder Peak
7	400	150.00	568.2	Ladder Peak
8	500	150.00	454.5	Ladder Peak
9	600	150.00	378.8	Ladder Peak
10	700	150.00	324.7	Ladder Peak
11	1,000	150.00	227.3	Ladder Peak
12	2,000	150.00	113.6	Ladder Peak
13	3,000	150.00	75.8	Ladder Peak
14	7,000	150.00	32.5	Ladder Peak
15	10,380	75.00	10.9	Upper Marker

Assay Class: High Sensitivity DNA Assay
 Data Path: C:\...ents and Settings\Bioanalyzer\2013-10-29\2013-10-29_006.xad

Created: 10/29/2013 3:10:19 PM
 Modified: 10/29/2013 3:52:40 PM

Electropherogram Summary Continued ...



Setpoint Deviations for sample 1 : Field4 BF 8

Height Threshold [FU] : 30

Overall Results for sample 1 : Field4 BF 8

Number of peaks found: 2 Corr. Area 1: 641.3
 Noise: 0.2

Peak table for sample 1 : Field4 BF 8

Peak	Size [bp]	Conc. [pg/μl]	Molarity [pmol/l]	Observations
1	35	125.00	5,411.3	Lower Marker
2	130	209.55	2,439.4	
3	400	696.53	2,636.1	
4	10,380	75.00	10.9	Upper Marker

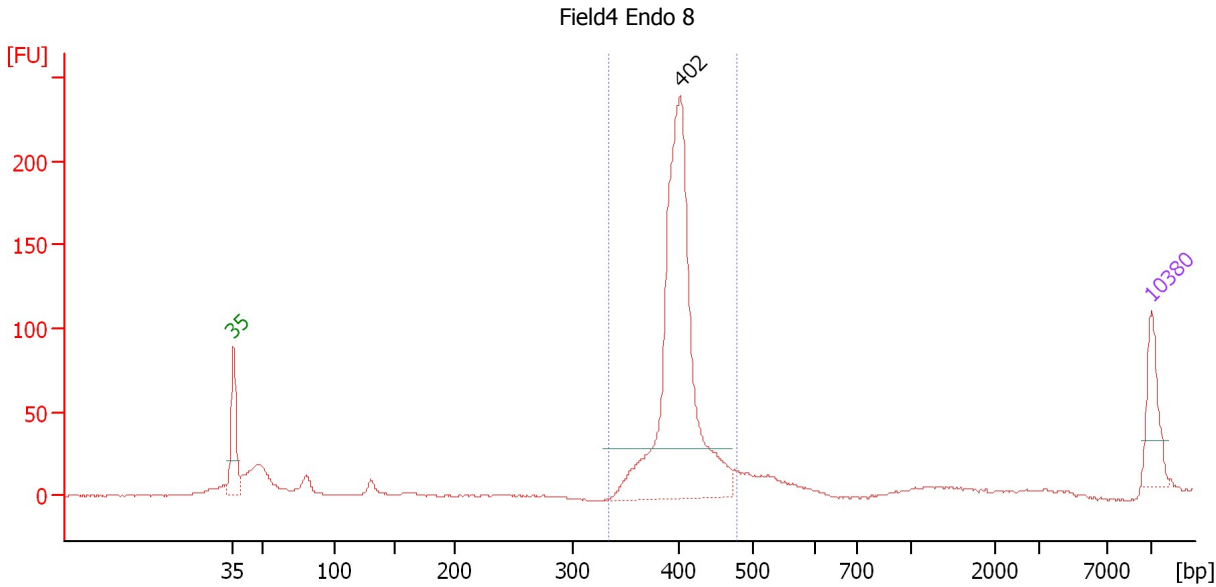
Region table for sample 1 : Field4 BF 8

From [bp]	To [bp]	Average Size [bp]	Molarity [pmol/l]	Conc. [pg/μl]	Corr. Area	% of Total	Size distribution in CV [%]	Color
326	453	398	2,564.8	672.59	641.3	62	3.8	Blue

Assay Class: High Sensitivity DNA Assay
 Data Path: C:\...ents and Settings\Bioanalyzer\2013-10-29\2013-10-29_006.xad

Created: 10/29/2013 3:10:19 PM
 Modified: 10/29/2013 3:52:40 PM

Electropherogram Summary Continued ...



Setpoint Deviations for sample 2 : Field4 Endo 8

Height Threshold [FU] : 30

Overall Results for sample 2 : Field4 Endo 8

Number of peaks found: 1 Corr. Area 1: 769.1
 Noise: 0.2

Peak table for sample 2 : Field4 Endo 8

Peak	Size [bp]	Conc. [pg/μl]	Molarity [pmol/l]	Observations
1	35	125.00	5,411.3	Lower Marker
2	402	907.49	3,419.1	
3	10,380	75.00	10.9	Upper Marker

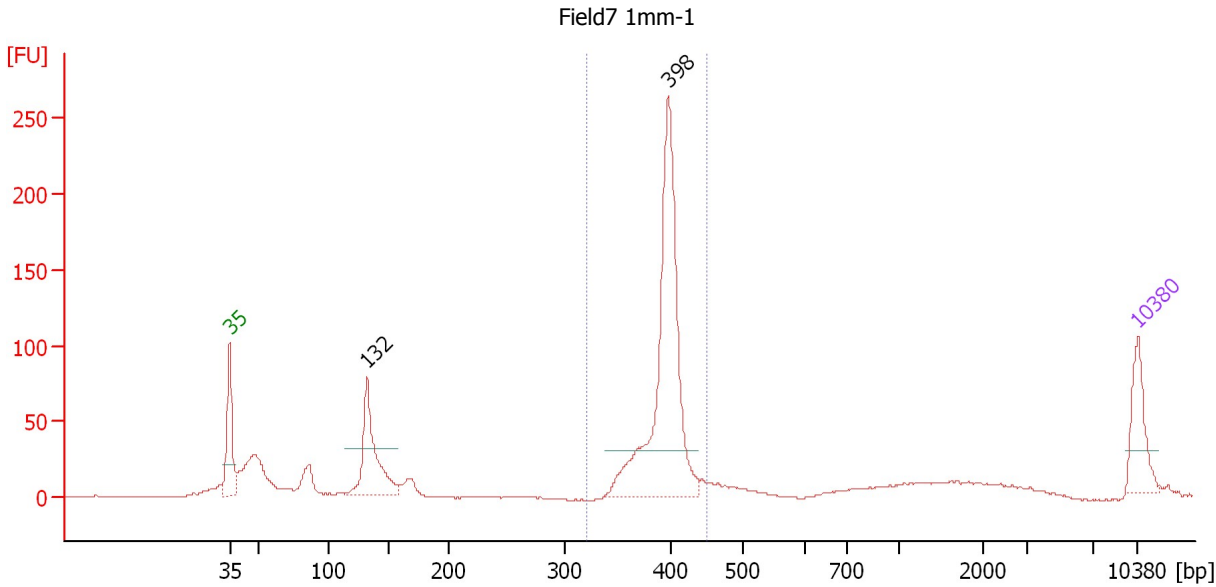
Region table for sample 2 : Field4 Endo 8

From [bp]	To [bp]	Average Size [bp]	Molarity [pmol/l]	Conc. [pg/μl]	Corr. Area	% of Total	Size distribution in CV [%]	Color
334	478	403	3,278.8	869.59	769.1	78	5.4	Blue

Assay Class: High Sensitivity DNA Assay
 Data Path: C:\...ents and Settings\Bioanalyzer\2013-10-29\2013-10-29_006.xad

Created: 10/29/2013 3:10:19 PM
 Modified: 10/29/2013 3:52:40 PM

Electropherogram Summary Continued ...



Setpoint Deviations for sample 3 : Field7 1mm-1

Height Threshold [FU] : 30

Overall Results for sample 3 : Field7 1mm-1

Number of peaks found: 2 Corr. Area 1: 629.8
 Noise: 0.4

Peak table for sample 3 : Field7 1mm-1

Peak	Size [bp]	Conc. [pg/µl]	Molarity [pmol/l]	Observations
1	35	125.00	5,411.3	Lower Marker
2	132	233.91	2,688.9	
3	398	609.24	2,318.9	
4	10,380	75.00	10.9	Upper Marker

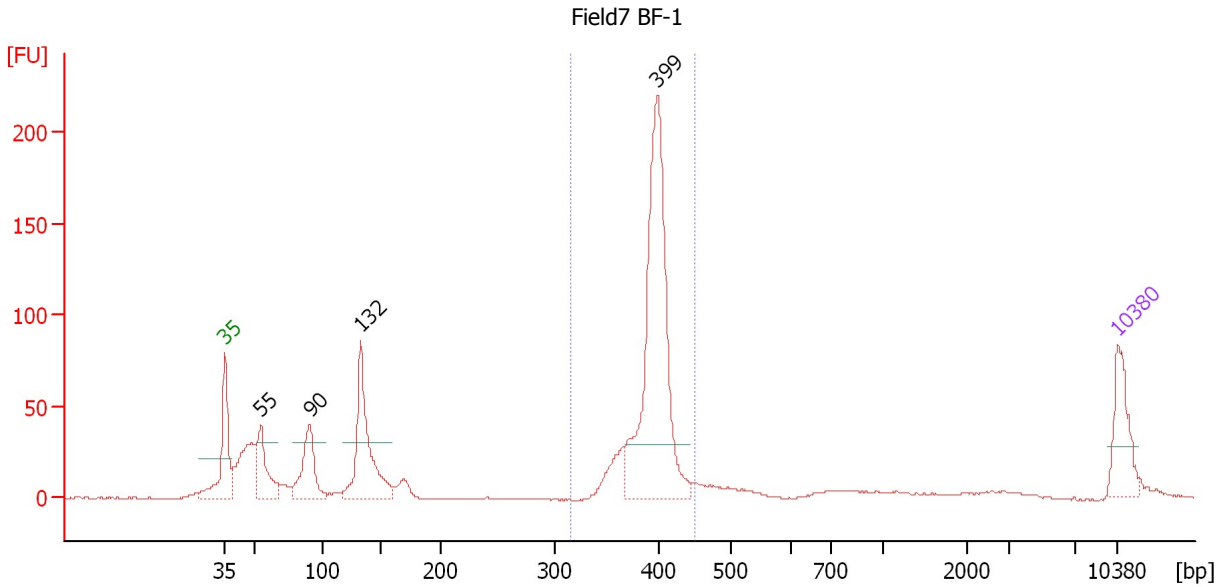
Region table for sample 3 : Field7 1mm-1

From [bp]	To [bp]	Average Size [bp]	Molarity [pmol/l]	Conc. [pg/µl]	Corr. Area	% of Total	Size distribution in CV [%]	Color
321	451	396	2,405.2	627.63	629.8	50	4.4	Blue

Assay Class: High Sensitivity DNA Assay
 Data Path: C:\...ents and Settings\Bioanalyzer\2013-10-29\2013-10-29_006.xad

Created: 10/29/2013 3:10:19 PM
 Modified: 10/29/2013 3:52:40 PM

Electropherogram Summary Continued ...



Setpoint Deviations for sample 4 : Field7 BF-1

Height Threshold [FU] : 30

Overall Results for sample 4 : Field7 BF-1

Number of peaks found: 4 Corr. Area 1: 603.6
 Noise: 0.4

Peak table for sample 4 : Field7 BF-1

Peak	Size [bp]	Conc. [pg/μl]	Molarity [pmol/l]	Observations
1	35	125.00	5,411.3	Lower Marker
2	55	133.72	3,694.2	
3	90	151.44	2,538.2	
4	132	278.12	3,183.5	
5	399	597.21	2,265.7	
6	10,380	75.00	10.9	Upper Marker

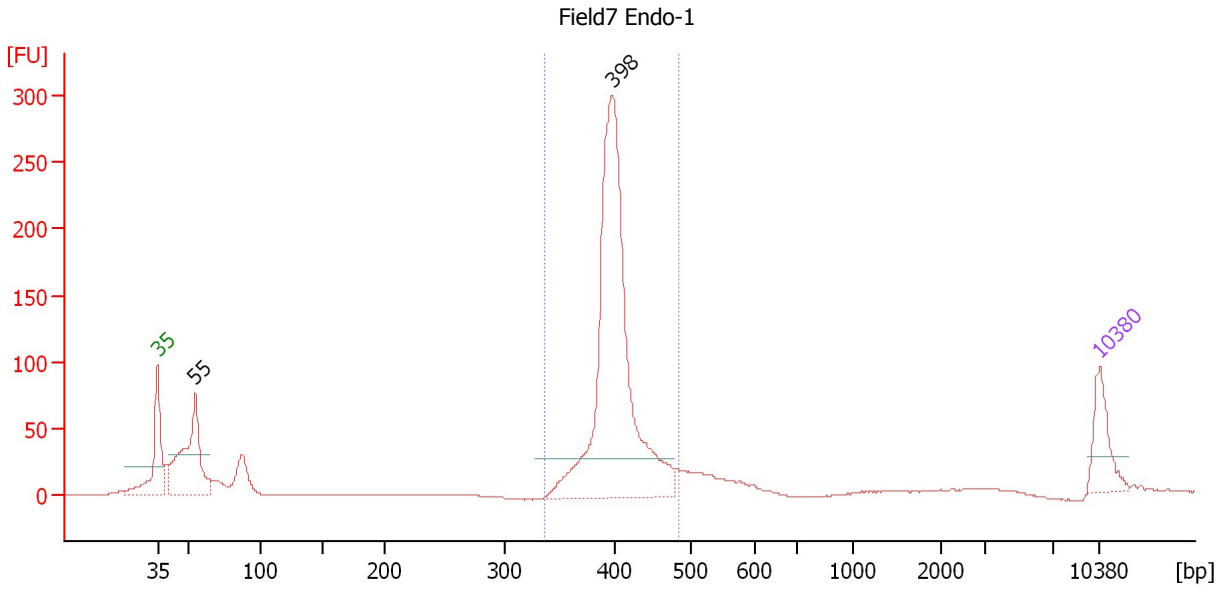
Region table for sample 4 : Field7 BF-1

From [bp]	To [bp]	Average Size [bp]	Molarity [pmol/l]	Conc. [pg/μl]	Corr. Area	% of Total	Size distribution in CV [%]	Color
316	450	395	2,527.2	658.59	603.6	50	4.4	Blue

Assay Class: High Sensitivity DNA Assay
 Data Path: C:\...ents and Settings\Bioanalyzer\2013-10-29\2013-10-29_006.xad

Created: 10/29/2013 3:10:19 PM
 Modified: 10/29/2013 3:52:40 PM

Electropherogram Summary Continued ...



Setpoint Deviations for sample 5 : Field7 Endo-1

Height Threshold [FU] : 30

Overall Results for sample 5 : Field7 Endo-1

Number of peaks found: 2 Corr. Area 1: 961.0
 Noise: 0.3

Peak table for sample 5 : Field7 Endo-1

Peak	Size [bp]	Conc. [pg/μl]	Molarity [pmol/l]	Observations
1	35	125.00	5,411.3	Lower Marker
2	55	342.82	9,484.7	
3	398	982.80	3,744.8	
4	10,380	75.00	10.9	Upper Marker

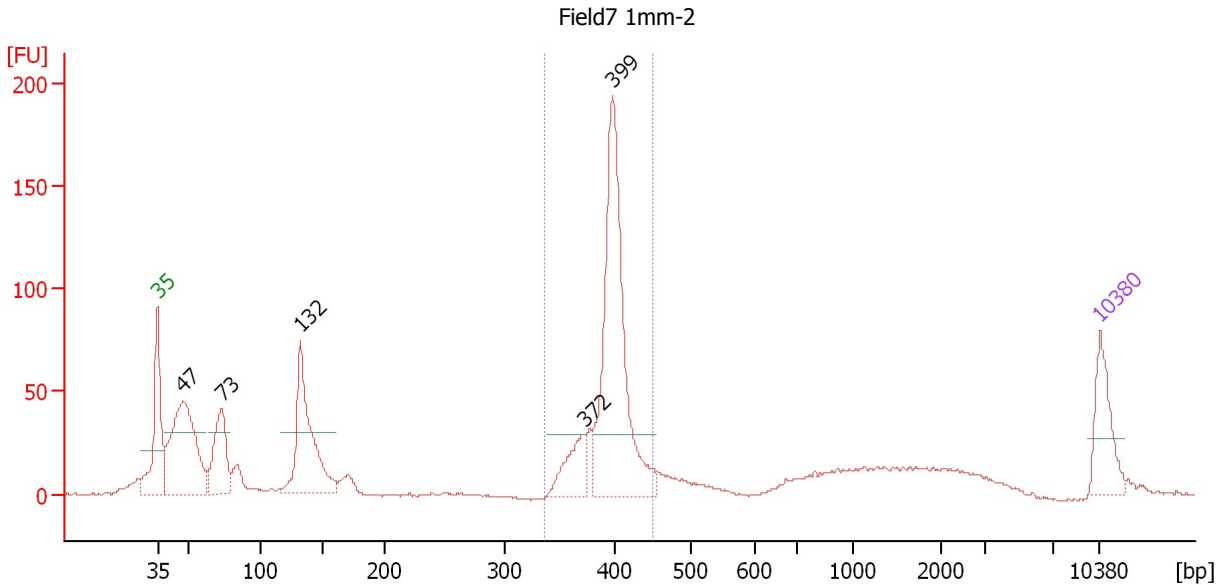
Region table for sample 5 : Field7 Endo-1

From [bp]	To [bp]	Average Size [bp]	Molarity [pmol/l]	Conc. [pg/μl]	Corr. Area	% of Total	Size distribution in CV [%]	Color
335	483	404	3,518.5	934.81	961.0	67	5.7	Blue

Assay Class: High Sensitivity DNA Assay
 Data Path: C:\...ents and Settings\Bioanalyzer\2013-10-29\2013-10-29_006.xad

Created: 10/29/2013 3:10:19 PM
 Modified: 10/29/2013 3:52:40 PM

Electropherogram Summary Continued ...



Setpoint Deviations for sample 6 : Field7 1mm-2

Height Threshold [FU] : 30

Overall Results for sample 6 : Field7 1mm-2

Number of peaks found: 5 Corr. Area 1: 509.2
 Noise: 0.5

Peak table for sample 6 : Field7 1mm-2

Peak	Size [bp]	Conc. [pg/μl]	Molarity [pmol/l]	Observations
1	35	125.00	5,411.3	Lower Marker
2	47	382.63	12,231.3	
3	73	161.39	3,356.9	
4	132	287.26	3,302.2	
5	372	81.86	333.3	
6	399	495.12	1,882.4	
7	10,380	75.00	10.9	Upper Marker

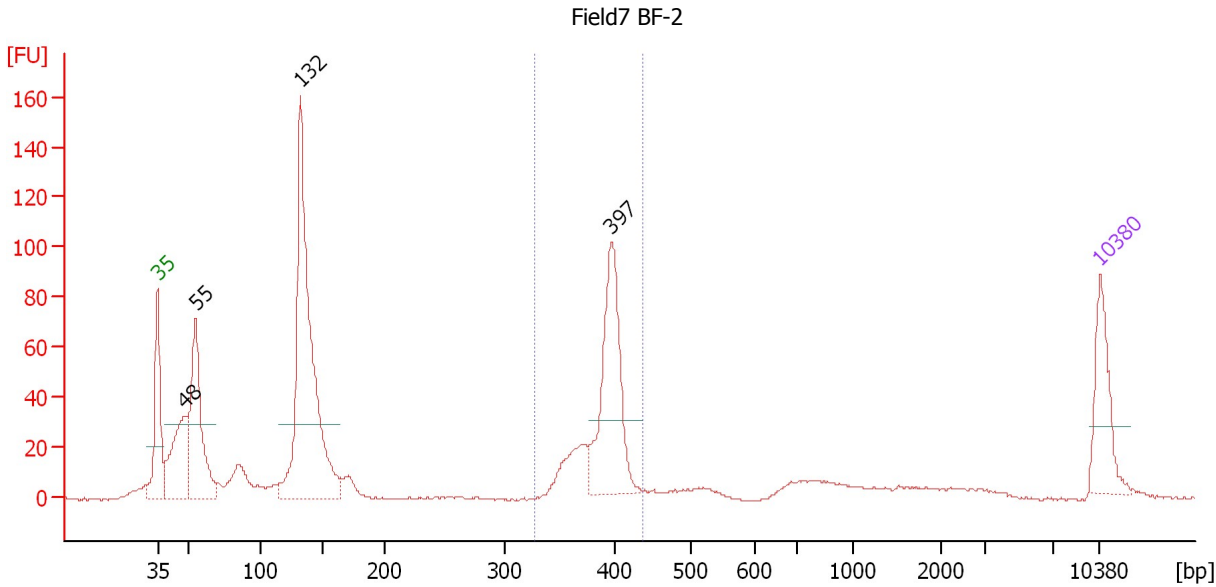
Region table for sample 6 : Field7 1mm-2

From [bp]	To [bp]	Average Size [bp]	Molarity [pmol/l]	Conc. [pg/μl]	Corr. Area	% of Total	Size distribution in CV [%]	Color
335	451	397	2,226.2	581.76	509.2	38	4.7	Blue

Assay Class: High Sensitivity DNA Assay
 Data Path: C:\...ents and Settings\Bioanalyzer\2013-10-29\2013-10-29_006.xad

Created: 10/29/2013 3:10:19 PM
 Modified: 10/29/2013 3:52:40 PM

Electropherogram Summary Continued ...



Setpoint Deviations for sample 7 : Field7 BF-2

Height Threshold [FU] : 30

Overall Results for sample 7 : Field7 BF-2

Number of peaks found: 4 Corr. Area 1: 279.7
 Noise: 0.5

Peak table for sample 7 : Field7 BF-2

Peak	Size [bp]	Conc. [pg/μl]	Molarity [pmol/l]	Observations
1	35	125.00	5,411.3	Lower Marker
2	48	168.18	5,294.5	
3	55	244.68	6,742.1	
4	132	593.73	6,820.8	
5	397	234.23	893.9	
6	10,380	75.00	10.9	Upper Marker

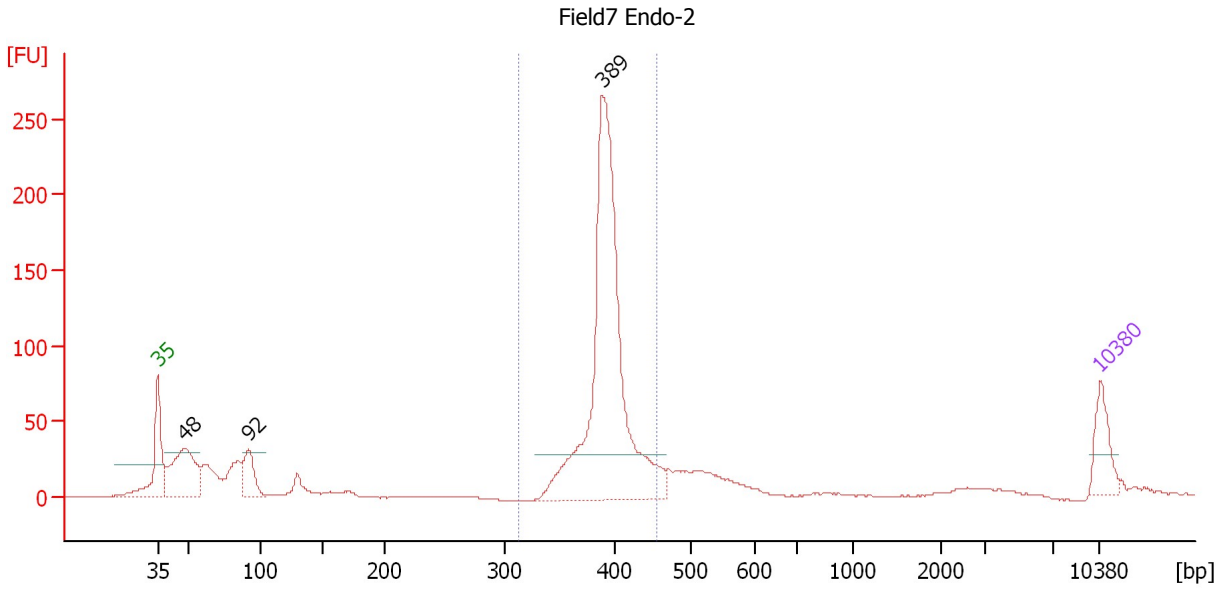
Region table for sample 7 : Field7 BF-2

From [bp]	To [bp]	Average Size [bp]	Molarity [pmol/l]	Conc. [pg/μl]	Corr. Area	% of Total	Size distribution in CV [%]	Color
326	436	390	1,232.9	316.64	279.7	26	4.6	Blue

Assay Class: High Sensitivity DNA Assay
 Data Path: C:\...ents and Settings\Bioanalyzer\2013-10-29\2013-10-29_006.xad

Created: 10/29/2013 3:10:19 PM
 Modified: 10/29/2013 3:52:40 PM

Electropherogram Summary Continued ...



Setpoint Deviations for sample 8 : Field7 Endo-2

Height Threshold [FU] : 30

Overall Results for sample 8 : Field7 Endo-2

Number of peaks found: 3 Corr. Area 1: 785.0
 Noise: 0.3

Peak table for sample 8 : Field7 Endo-2

Peak	Size [bp]	Conc. [pg/μl]	Molarity [pmol/l]	Observations
1	35	125.00	5,411.3	Lower Marker
2	48	298.78	9,386.6	
3	92	116.58	1,930.3	
4	389	1,107.63	4,310.6	
5	10,380	75.00	10.9	Upper Marker

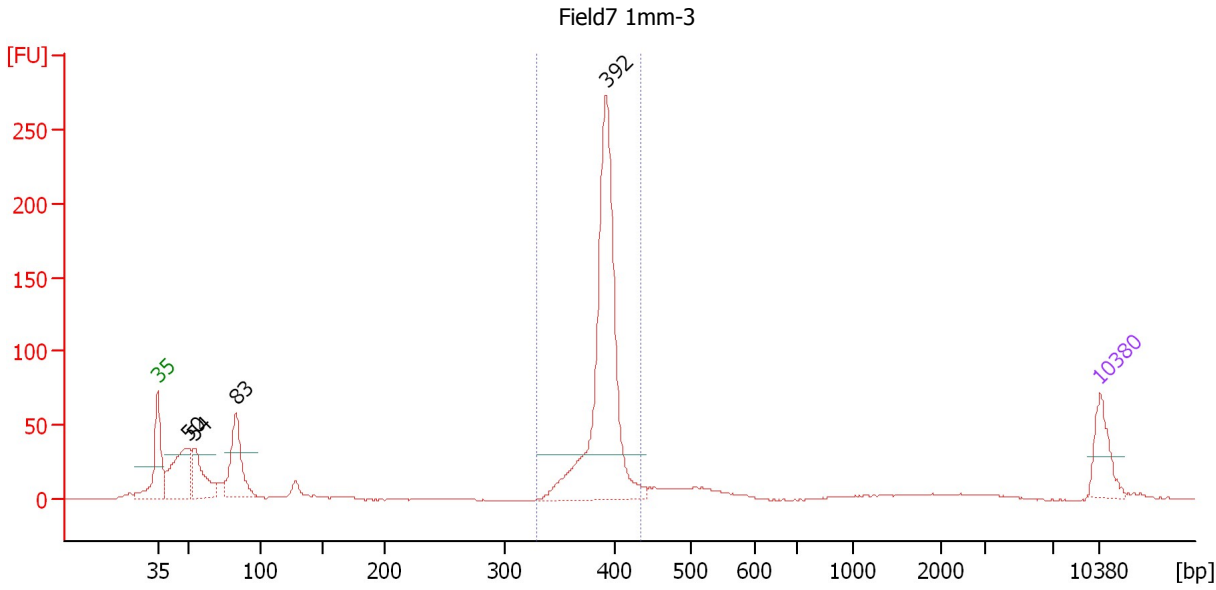
Region table for sample 8 : Field7 Endo-2

From [bp]	To [bp]	Average Size [bp]	Molarity [pmol/l]	Conc. [pg/μl]	Corr. Area	% of Total	Size distribution in CV [%]	Color
311	455	394	3,977.1	1,031.62	785.0	60	4.9	Blue

Assay Class: High Sensitivity DNA Assay
 Data Path: C:\...ents and Settings\Bioanalyzer\2013-10-29\2013-10-29_006.xad

Created: 10/29/2013 3:10:19 PM
 Modified: 10/29/2013 3:52:40 PM

Electropherogram Summary Continued ...



Setpoint Deviations for sample 9 : Field7 1mm-3

Height Threshold [FU] : 30

Overall Results for sample 9 : Field7 1mm-3

Number of peaks found: 4 Corr. Area 1: 582.5
 Noise: 0.4

Peak table for sample 9 : Field7 1mm-3

Peak	Size [bp]	Conc. [pg/μl]	Molarity [pmol/l]	Observations
1	35	125.00	5,411.3	Lower Marker
2	50	242.84	7,404.3	
3	54	156.86	4,367.0	
4	83	221.86	4,063.5	
5	392	813.45	3,142.1	
6	10,380	75.00	10.9	Upper Marker

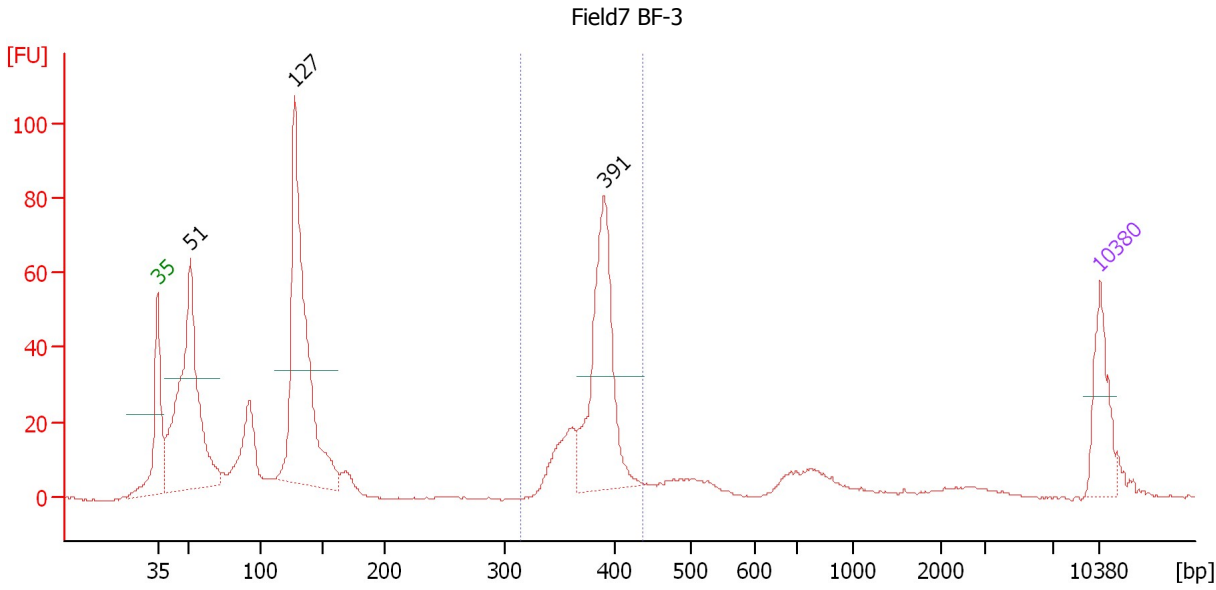
Region table for sample 9 : Field7 1mm-3

From [bp]	To [bp]	Average Size [bp]	Molarity [pmol/l]	Conc. [pg/μl]	Corr. Area	% of Total	Size distribution in CV [%]	Color
329	434	390	3,116.4	801.01	582.5	56	3.6	Blue

Assay Class: High Sensitivity DNA Assay
 Data Path: C:\...ents and Settings\Bioanalyzer\2013-10-29\2013-10-29_006.xad

Created: 10/29/2013 3:10:19 PM
 Modified: 10/29/2013 3:52:40 PM

Electropherogram Summary Continued ...



Setpoint Deviations for sample 10 : Field7 BF-3

Height Threshold [FU] : 30

Overall Results for sample 10 : Field7 BF-3

Number of peaks found: 3 Corr. Area 1: 244.1
 Noise: 0.2

Peak table for sample 10 : Field7 BF-3

Peak	Size [bp]	Conc. [pg/µl]	Molarity [pmol/l]	Observations
1	35	125.00	5,411.3	Lower Marker
2	51	541.93	16,023.9	
3	127	586.62	6,995.2	
4	391	312.95	1,214.0	
5	10,380	75.00	10.9	Upper Marker

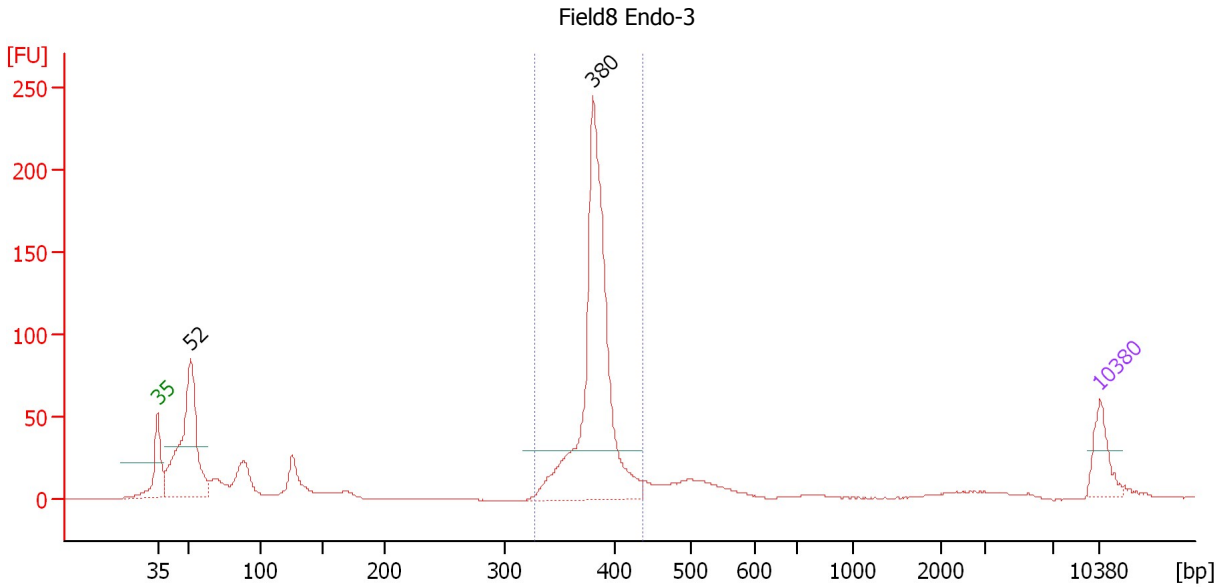
Region table for sample 10 : Field7 BF-3

From [bp]	To [bp]	Average Size [bp]	Molarity [pmol/l]	Conc. [pg/µl]	Corr. Area	% of Total	Size distribution in CV [%]	Color
314	437	382	1,706.4	430.15	244.1	26	5.0	Blue

Assay Class: High Sensitivity DNA Assay
 Data Path: C:\...ents and Settings\Bioanalyzer\2013-10-29\2013-10-29_006.xad

Created: 10/29/2013 3:10:19 PM
 Modified: 10/29/2013 3:52:40 PM

Electropherogram Summary Continued ...



Setpoint Deviations for sample 11 : Field8 Endo-3

Height Threshold [FU] : 30

Overall Results for sample 11 : Field8 Endo-3

Number of peaks found: 2 Corr. Area 1: 587.2
 Noise: 0.2

Peak table for sample 11 : Field8 Endo-3

Peak	Size [bp]	Conc. [pg/µl]	Molarity [pmol/l]	Observations
1	35	125.00	5,411.3	Lower Marker
2	52	608.38	17,817.9	
3	380	1,019.03	4,061.4	
4	10,380	75.00	10.9	Upper Marker

Region table for sample 11 : Field8 Endo-3

From [bp]	To [bp]	Average Size [bp]	Molarity [pmol/l]	Conc. [pg/µl]	Corr. Area	% of Total	Size distribution in CV [%]	Color
327	438	382	3,932.4	990.75	587.2	52	4.3	Blue

Assay Class: High Sensitivity DNA Assay
Data Path: C:\...ents and Settings\Bioanalyzer\2013-10-29\2013-10-29_006.xad

Created: 10/29/2013 3:10:19 PM
Modified: 10/29/2013 3:52:40 PM

Gel Image

