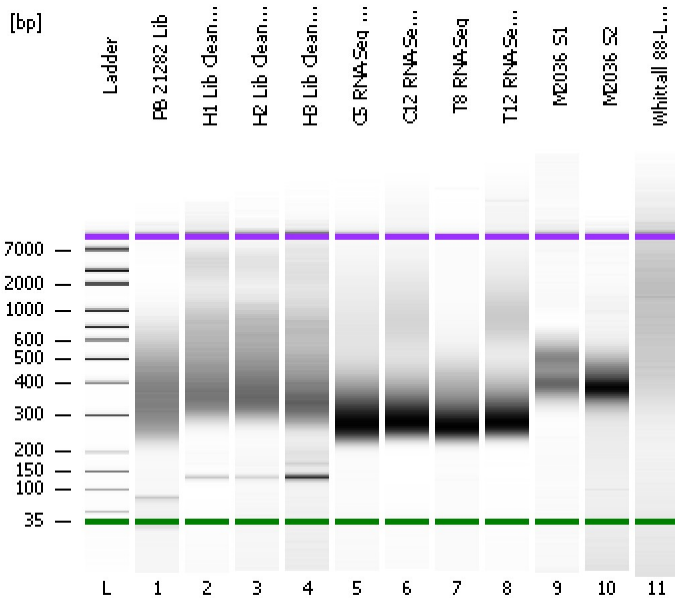


Assay Class: High Sensitivity DNA Assay  
Data Path: C:\...ents and Settings\Bioanalyzer\2013-10-31\2013-10-31\_002.xad

Created: 10/31/2013 10:23:46 AM  
Modified: 10/31/2013 11:05:29 AM

Electrophoresis File Run Summary



Instrument Information:

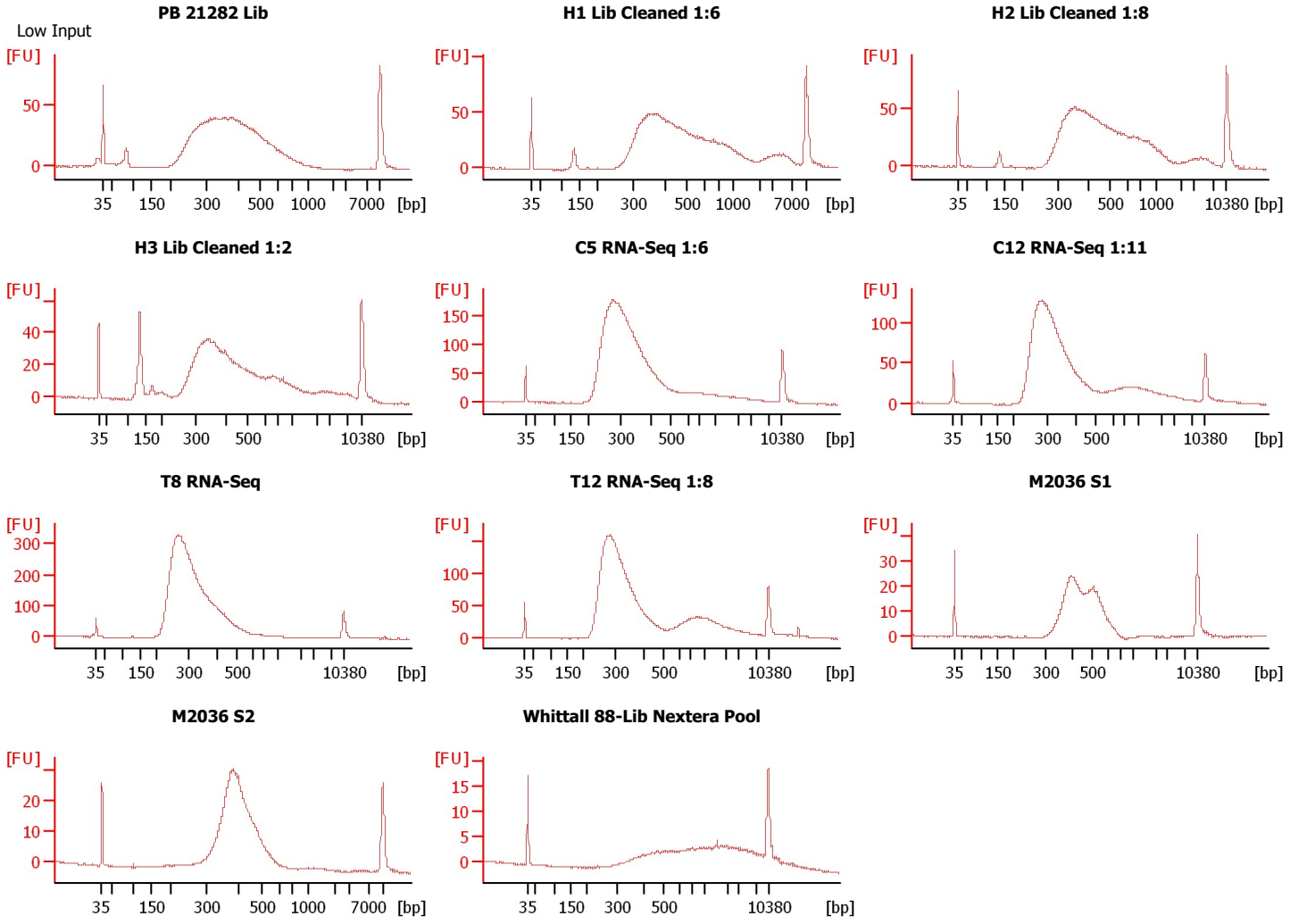
Instrument Name: DE13701086      Firmware: C.01.069  
Serial#: DE13701086      Type: G2938B

Assay Information:

Assay Origin Path: C:\Program Files\Agilent\2100 bioanalyzer\2100 expert\assays\dsDNA\High Sensitivity DNA.xsy  
Assay Class: High Sensitivity DNA Assay  
Version: 1.03  
Assay Comments: Copyright © 2003-2010 Agilent Technologies

Chip Information:

Chip Lot #:   
Reagent Kit Lot #:   
Chip Comments:



Assay Class: High Sensitivity DNA Assay  
Data Path: C:\...ents and Settings\Bioanalyzer\2013-10-31\2013-10-31\_002.xad

Created: 10/31/2013 10:23:46 AM  
Modified: 10/31/2013 11:05:29 AM

**Electrophoresis File Run Summary (Chip Summary)**

Sample Name	Sample Comment	Rest. Digest	Status	Observation	Result Label	Result Color
PB 21282 Lib	Low Input	<input type="checkbox"/>	✓			
H1 Lib Cleaned 1:6		<input type="checkbox"/>	✓			
H2 Lib Cleaned 1:8		<input type="checkbox"/>	✓			
H3 Lib Cleaned 1:2		<input type="checkbox"/>	✓			
C5 RNA-Seq 1:6		<input type="checkbox"/>	✓			
C12 RNA-Seq 1:11		<input type="checkbox"/>	✓			
T8 RNA-Seq		<input type="checkbox"/>	✓			
T12 RNA-Seq 1:8		<input type="checkbox"/>	✓			
M2036 S1		<input type="checkbox"/>	✓			
M2036 S2		<input type="checkbox"/>	✓			
Whittall 88-Lib Nextera Pool		<input type="checkbox"/>	✓			
Ladder		<input type="checkbox"/>	✓			

**Chip Lot #**

**Reagent Kit Lot #**

**Chip Comments :**

Assay Class: High Sensitivity DNA Assay  
Data Path: C:\...ents and Settings\Bioanalyzer\2013-10-31\2013-10-31\_002.xad

Created: 10/31/2013 10:23:46 AM  
Modified: 10/31/2013 11:05:29 AM

**Electrophoresis Assay Details**

**General Analysis Settings**

Number of Available Sample and Ladder Wells (Max.) : 12  
Minimum Visible Range [s] : 32  
Maximum Visible Range [s] : 138  
Start Analysis Time Range [s] : 33  
End Analysis Time Range [s] : 137.5  
Ladder Concentration [pg/μl] : 1950  
Uses Standard Area for Ladder Fragments  
Lower Marker Concentration [pg/μl] : 125  
Upper Marker Concentration [pg/μl] : 75  
Used Upper Marker for Quantitation  
Standard Curve Fit is Point to Point  
Show Data Aligned to Lower and Upper Marker

**Integrator Settings**

Integration Start Time [s] : 33.05  
Integration End Time [s] : 137  
Slope Threshold : 0.8  
Height Threshold [FU] : 5  
Area Threshold : 0.1  
Width Threshold [s] : 0.6  
Baseline Plateau [s] : 0.5

**Filter Settings**

Filter Width [s] : 0.5  
Polynomial Order : 4

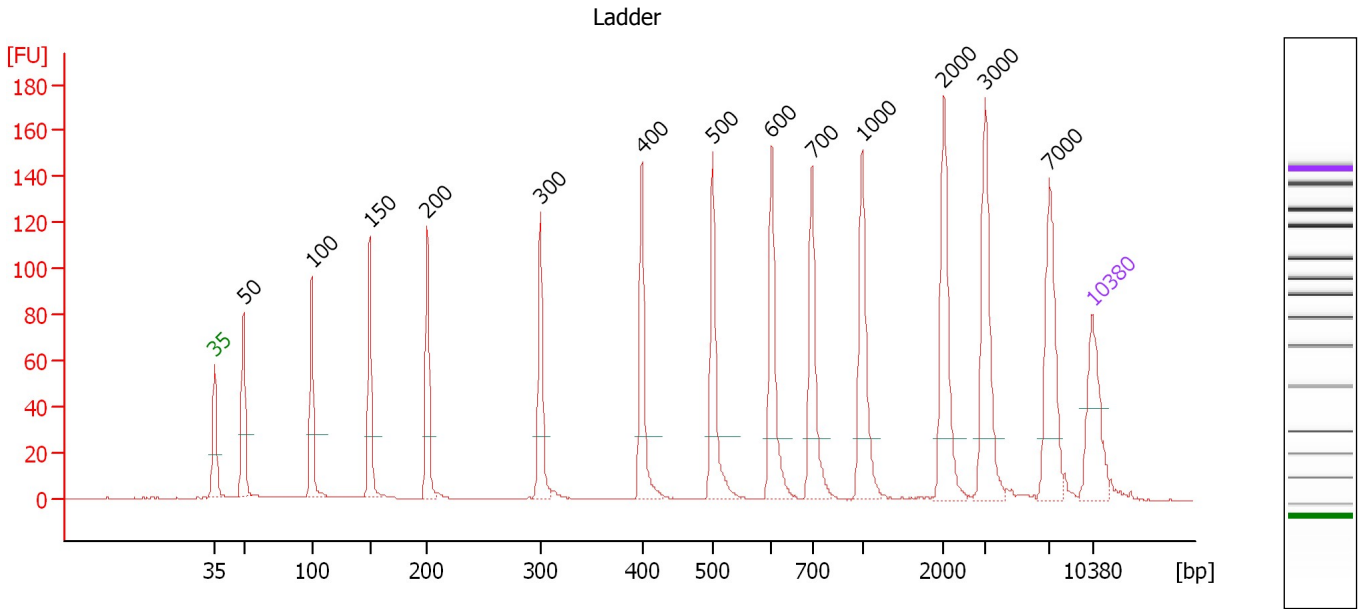
**Ladder**

Ladder Peak	Size	Area
1	35	160
2	50	210
3	100	208
4	150	221
5	200	242
6	300	270
7	400	305
8	500	306
9	600	336
10	700	321
11	1000	366
12	2000	413
13	3000	411
14	7000	400
15	10380	214

Assay Class: High Sensitivity DNA Assay  
 Data Path: C:\...ents and Settings\Bioanalyzer\2013-10-31\2013-10-31\_002.xad

Created: 10/31/2013 10:23:46 AM  
 Modified: 10/31/2013 11:05:29 AM

**Electropherogram Summary**



**Overall Results for Ladder**

Noise: 0.2

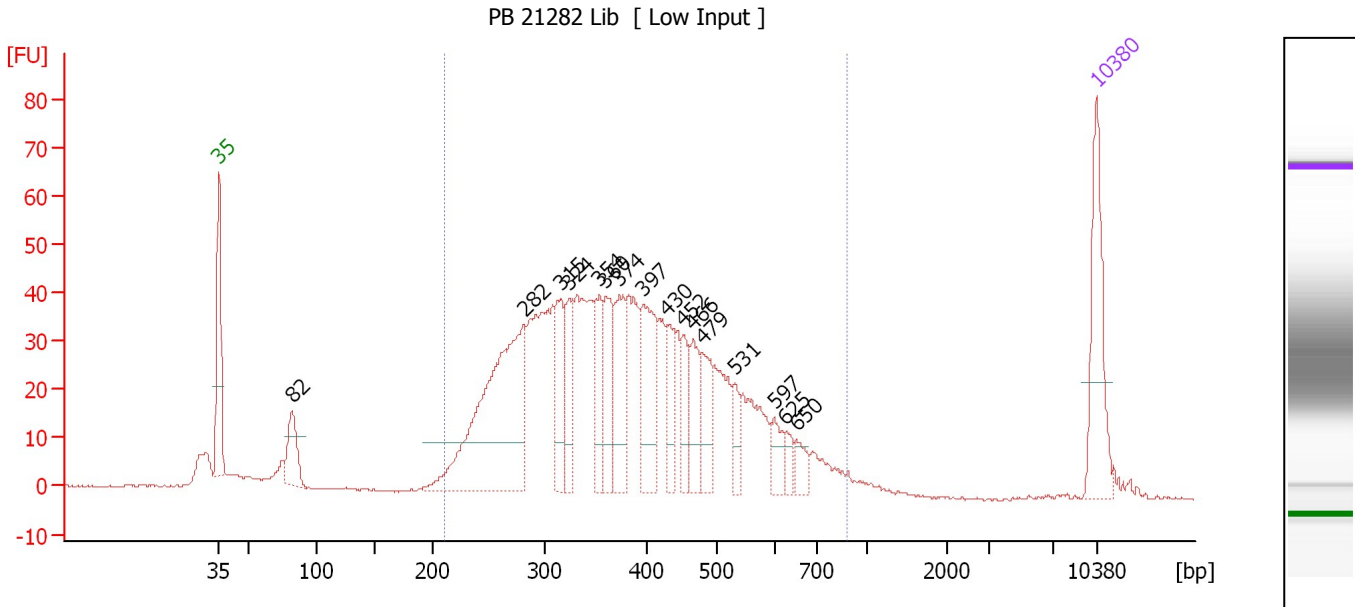
**Peak table for Ladder**

Peak	Size [bp]	Conc. [pg/μl]	Molarity [pmol/l]	Observations
1	35	125.00	5,411.3	Lower Marker
2	50	150.00	4,545.5	Ladder Peak
3	100	150.00	2,272.7	Ladder Peak
4	150	150.00	1,515.2	Ladder Peak
5	200	150.00	1,136.4	Ladder Peak
6	300	150.00	757.6	Ladder Peak
7	400	150.00	568.2	Ladder Peak
8	500	150.00	454.5	Ladder Peak
9	600	150.00	378.8	Ladder Peak
10	700	150.00	324.7	Ladder Peak
11	1,000	150.00	227.3	Ladder Peak
12	2,000	150.00	113.6	Ladder Peak
13	3,000	150.00	75.8	Ladder Peak
14	7,000	150.00	32.5	Ladder Peak
15	10,380	75.00	10.9	Upper Marker

Assay Class: High Sensitivity DNA Assay  
 Data Path: C:\...ents and Settings\Bioanalyzer\2013-10-31\2013-10-31\_002.xad

Created: 10/31/2013 10:23:46 AM  
 Modified: 10/31/2013 11:05:29 AM

**Electropherogram Summary Continued ...**



**Setpoint Deviations for sample 1 : PB 21282 Lib**

Height Threshold [FU] : 10

**Overall Results for sample 1 : PB 21282 Lib**

Number of peaks found: 16      Corr. Area 1: 1,166.9  
 Noise: 0.2

**Peak table for sample 1 : PB 21282 Lib**

Peak	Size [bp]	Conc. [pg/μl]	Molarity [pmol/l]	Observations
1	35	125.00	5,411.3	Lower Marker
2	82	55.78	1,030.3	
3	282	324.30	1,744.9	
4	315	68.15	327.5	
5	324	59.72	279.1	
6	354	59.65	255.2	
7	360	65.81	277.0	
8	374	77.45	314.0	
9	397	96.39	367.5	
10	430	37.36	131.6	
11	452	36.31	121.8	
12	466	48.09	156.3	
13	479	45.89	145.2	
14	531	24.58	70.1	
15	597	22.29	56.5	
16	625	12.31	29.8	
17	650	17.26	40.2	
18	10,380	75.00	10.9	Upper Marker

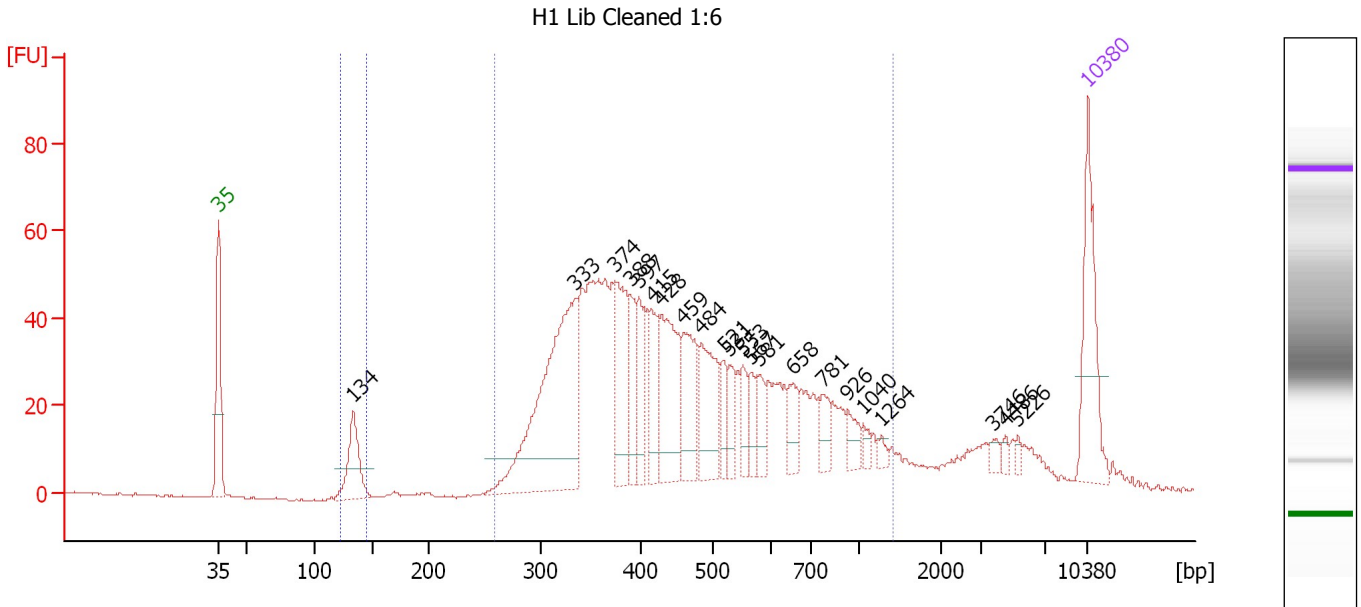
**Region table for sample 1 : PB 21282 Lib**

From [bp]	To [bp]	Average Size [bp]	Molarity [pmol/l]	Conc. [pg/μl]	Corr. Area	% of Total	Size distribution in CV [%]	Color
211	883	395	7,245.7	1,689.33	1,166.9	91	29.4	Blue

Assay Class: High Sensitivity DNA Assay  
 Data Path: C:\...ents and Settings\Bioanalyzer\2013-10-31\2013-10-31\_002.xad

Created: 10/31/2013 10:23:46 AM  
 Modified: 10/31/2013 11:05:29 AM

**Electropherogram Summary Continued ...**



**Setpoint Deviations for sample 2 : H1 Lib Cleaned 1:6**

Height Threshold [FU] : 7

**Overall Results for sample 2 : H1 Lib Cleaned 1:6**

Number of peaks found: 22                      Corr. Area 1: 1,192.1  
 Noise: 0.2                                      Corr. Area 2: 31.1

**Peak table for sample 2 : H1 Lib Cleaned 1:6**

Peak	Size [bp]	Conc. [pg/μl]	Molarity [pmol/l]	Observations
1	35	125.00	5,411.3	Lower Marker
2	134	73.57	834.1	
3	333	303.15	1,378.4	
4	374	94.95	385.1	
5	388	46.72	182.2	
6	397	50.60	193.1	
7	415	58.73	214.6	
8	428	109.88	388.7	
9	459	76.62	252.7	
10	484	82.54	258.1	
11	521	25.13	73.1	
12	531	25.41	72.5	
13	553	25.36	69.5	
14	567	19.38	51.8	
15	581	26.60	69.3	
16	658	26.86	61.9	
17	781	22.64	43.9	
18	926	16.73	27.4	
19	1,040	7.90	11.5	
20	1,264	6.05	7.3	
21	3,746	6.57	2.7	
22	4,486	4.95	1.7	

Assay Class: High Sensitivity DNA Assay  
 Data Path: C:\...ents and Settings\Bioanalyzer\2013-10-31\2013-10-31\_002.xad



Created: 10/31/2013 10:23:46 AM  
 Modified: 10/31/2013 11:05:29 AM

### Electropherogram Summary Continued ...

#### ... Peak table for sample 2 : H1 Lib Cleaned 1:6

Peak	Size [bp]	Conc. [pg/μl]	Molarity [pmol/l]	Observations
23	5,226	4.24	1.2	
24	10,380	75.00	10.9	Upper Marker

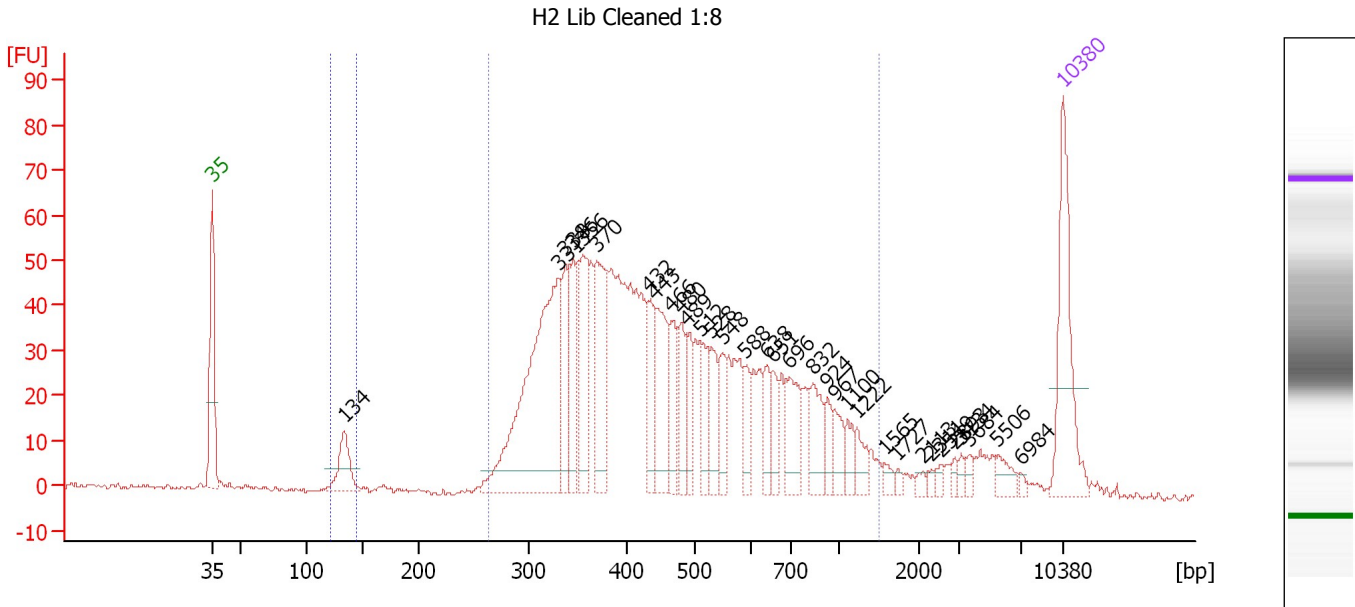
#### Region table for sample 2 : H1 Lib Cleaned 1:6

From [bp]	To [bp]	Average Size [bp]	Molarity [pmol/l]	Conc. [pg/μl]	Corr. Area	% of Total	Size distribution in CV [%]	Color
122	144	134	647.0	57.16	31.1	2	2.9	
258	1,400	496	5,608.2	1,566.32	1,192.1	89	40.8	

Assay Class: High Sensitivity DNA Assay  
 Data Path: C:\...ents and Settings\Bioanalyzer\2013-10-31\2013-10-31\_002.xad

Created: 10/31/2013 10:23:46 AM  
 Modified: 10/31/2013 11:05:29 AM

**Electropherogram Summary Continued ...**



**Overall Results for sample 3 : H2 Lib Cleaned 1:8**

Number of peaks found: 33                      Corr. Area 1: 1,308.3  
 Noise: 0.5                                      Corr. Area 2: 25.1

**Peak table for sample 3 : H2 Lib Cleaned 1:8**

Peak	Size [bp]	Conc. [pg/μl]	Molarity [pmol/l]	Observations
1	35	125.00	5,411.3	Lower Marker
2	134	45.55	515.7	
3	331	276.34	1,264.0	
4	338	55.15	247.0	
5	346	51.91	227.4	
6	356	75.64	322.2	
7	370	89.58	367.1	
8	432	39.82	139.6	
9	443	66.71	228.2	
10	466	42.09	136.8	
11	480	35.73	112.8	
12	489	29.17	90.4	
13	512	28.97	85.8	
14	528	32.79	94.0	
15	548	27.40	75.7	
16	588	20.44	52.7	
17	638	20.03	47.6	
18	651	20.71	48.2	
19	696	42.80	93.2	
20	832	32.73	59.6	
21	924	15.76	25.8	
22	967	16.62	26.0	
23	1,100	13.46	18.5	
24	1,222	14.03	17.4	
25	1,565	5.81	5.6	
26	1,727	3.24	2.8	



Assay Class: High Sensitivity DNA Assay  
 Data Path: C:\...ents and Settings\Bioanalyzer\2013-10-31\2013-10-31\_002.xad



Created: 10/31/2013 10:23:46 AM  
 Modified: 10/31/2013 11:05:29 AM

**Electropherogram Summary Continued ...**

**... Peak table for sample 3 : H2 Lib Cleaned 1:8**

Peak	Size [bp]	Conc. [pg/μl]	Molarity [pmol/l]	Observations
27	2,113	4.01	2.9	
28	2,311	2.93	1.9	
29	2,549	3.64	2.2	
30	2,893	4.15	2.2	
31	3,134	4.16	2.0	
32	3,684	4.95	2.0	
33	5,506	10.61	2.9	
34	6,984	2.38	0.5	
35	▶ 10,380	75.00	10.9	Upper Marker

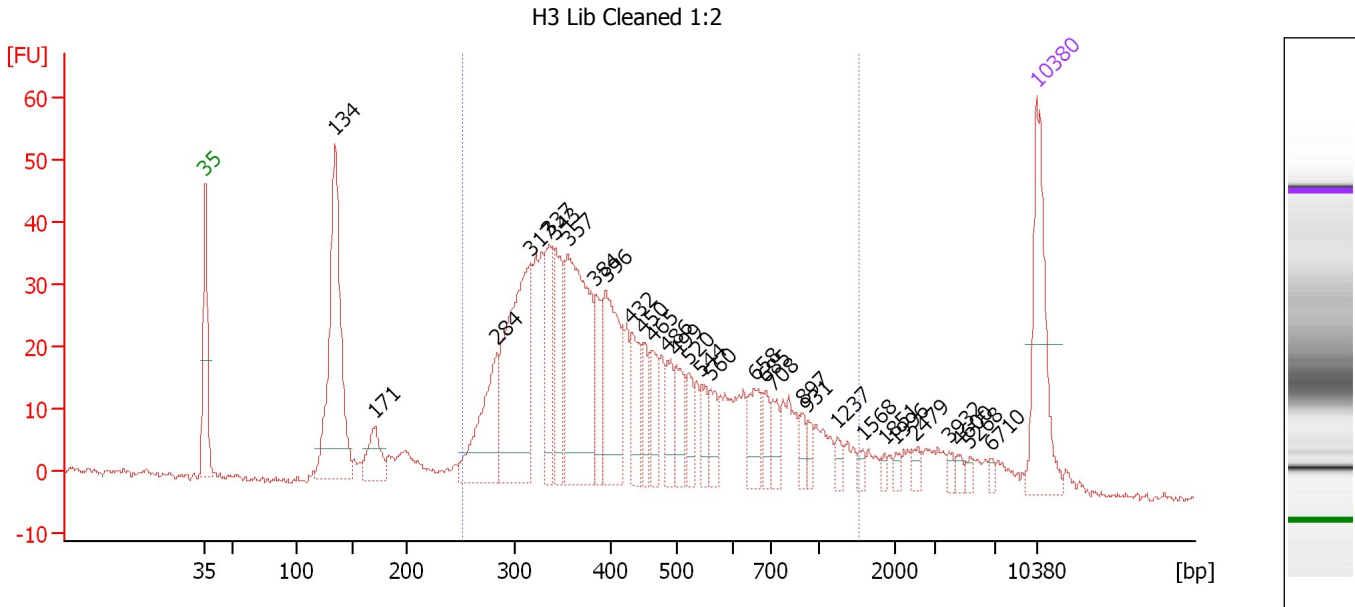
**Region table for sample 3 : H2 Lib Cleaned 1:8**

From [bp]	To [bp]	Average Size [bp]	Molarity [pmol/l]	Conc. [pg/μl]	Corr. Area	% of Total	Size distribution in CV [%]	Color
121	145	134	467.5	41.22	25.1	2	3.4	
264	1,500	504	5,470.9	1,536.53	1,308.3	91	42.7	

Assay Class: High Sensitivity DNA Assay  
 Data Path: C:\...ents and Settings\Bioanalyzer\2013-10-31\2013-10-31\_002.xad

Created: 10/31/2013 10:23:46 AM  
 Modified: 10/31/2013 11:05:29 AM

**Electropherogram Summary Continued ...**



**Overall Results for sample 4 : H3 Lib Cleaned 1:2**

Number of peaks found: 31                      Corr. Area 1: 888.8  
 Noise: 0.6

**Peak table for sample 4 : H3 Lib Cleaned 1:2**

Peak	Size [bp]	Conc. [pg/μl]	Molarity [pmol/l]	Observations
1	35	125.00	5,411.3	Lower Marker
2	134	251.08	2,836.3	
3	171	40.78	362.2	
4	284	94.52	504.2	
5	317	198.47	948.1	
6	337	60.93	274.3	
7	343	69.76	308.4	
8	357	192.37	817.4	
9	384	40.32	158.9	
10	396	105.43	403.4	
11	432	40.38	141.5	
12	450	25.87	87.1	
13	465	30.00	97.8	
14	486	27.33	85.3	
15	499	33.55	101.9	
16	520	20.27	59.1	
17	544	19.03	53.0	
18	560	21.34	57.7	
19	658	30.77	70.9	
20	685	15.62	34.5	
21	708	18.45	39.5	
22	897	10.84	18.3	
23	931	9.03	14.7	
24	1,237	8.31	10.2	
25	1,568	5.52	5.3	
26	1,851	3.81	3.1	

Assay Class: High Sensitivity DNA Assay  
 Data Path: C:\...ents and Settings\Bioanalyzer\2013-10-31\2013-10-31\_002.xad

Created: 10/31/2013 10:23:46 AM  
 Modified: 10/31/2013 11:05:29 AM

### Electropherogram Summary Continued ...

#### ... Peak table for sample 4 : H3 Lib Cleaned 1:2

Peak	Size [bp]	Conc. [pg/μl]	Molarity [pmol/l]	Observations
27	1,996	4.28	3.2	
28	2,479	6.45	3.9	
29	3,932	4.81	1.9	
30	4,600	4.99	1.6	
31	5,268	4.04	1.2	
32	6,710	3.41	0.8	
33	▶ 10,380	75.00	10.9	Upper Marker

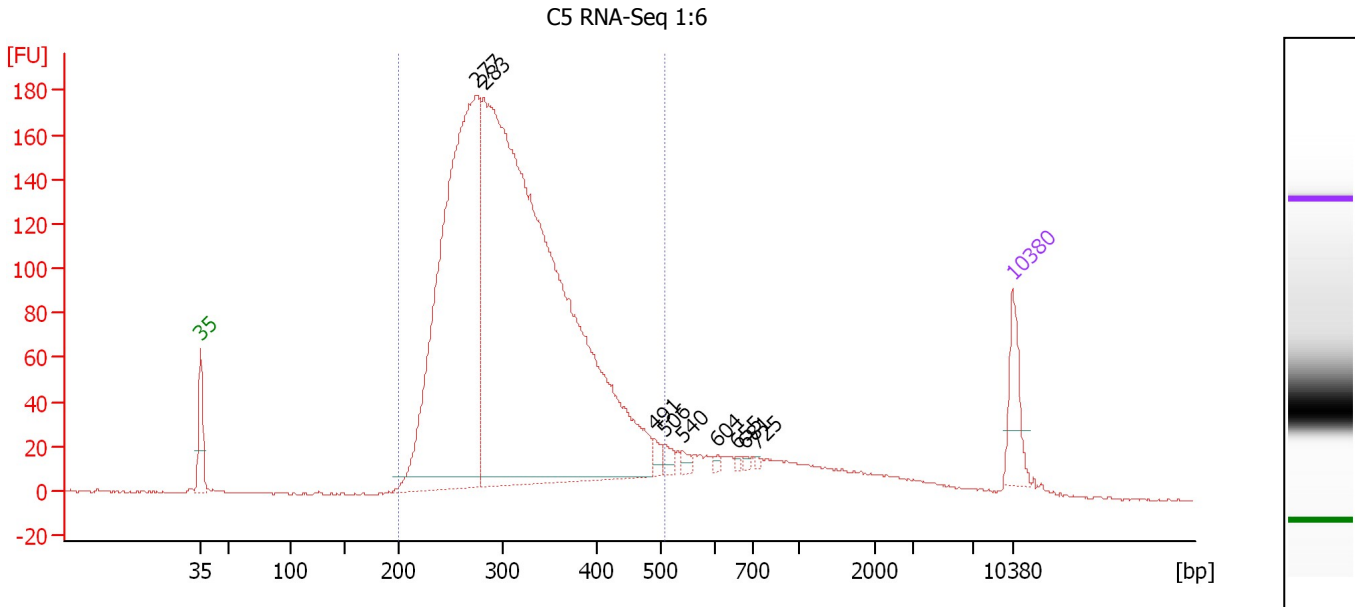
#### Region table for sample 4 : H3 Lib Cleaned 1:2

From [bp]	To [bp]	Average Size [bp]	Molarity [pmol/l]	Conc. [pg/μl]	Corr. Area	% of Total	Size distribution in CV [%]	Color
252	1,511	477	5,329.3	1,396.48	888.8	78	45.9	

Assay Class: High Sensitivity DNA Assay  
 Data Path: C:\...ents and Settings\Bioanalyzer\2013-10-31\2013-10-31\_002.xad

Created: 10/31/2013 10:23:46 AM  
 Modified: 10/31/2013 11:05:29 AM

**Electropherogram Summary Continued ...**



**Overall Results for sample 5 : C5 RNA-Seq 1:6**

Number of peaks found: 9                      Corr. Area 1: 3,157.0  
 Noise: 0.4

**Peak table for sample 5 : C5 RNA-Seq 1:6**

Peak	Size [bp]	Conc. [pg/μl]	Molarity [pmol/l]	Observations
1	35	125.00	5,411.3	Lower Marker
2	277	1,646.37	9,020.1	
3	283	3,051.09	16,354.3	
4	491	18.20	56.2	
5	506	19.94	59.7	
6	540	13.97	39.2	
7	604	7.09	17.8	
8	655	5.39	12.5	
9	681	5.83	13.0	
10	725	4.49	9.4	
11	10,380	75.00	10.9	Upper Marker

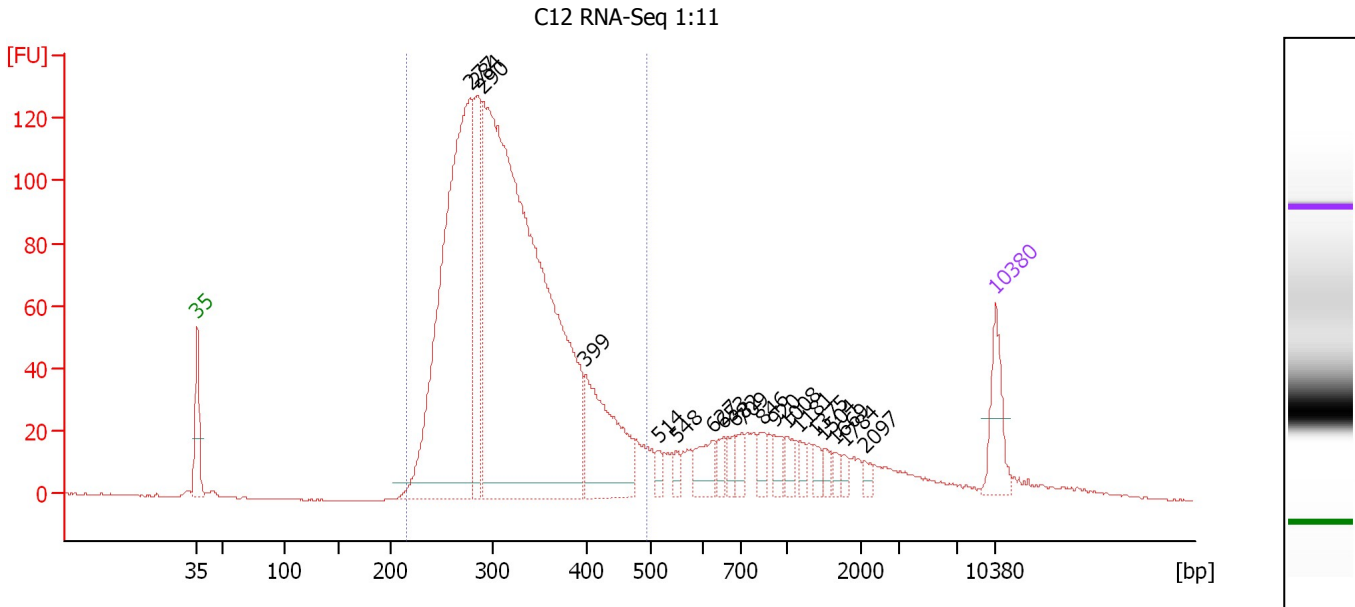
**Region table for sample 5 : C5 RNA-Seq 1:6**

From [bp]	To [bp]	Average Size [bp]	Molarity [pmol/l]	Conc. [pg/μl]	Corr. Area	% of Total	Size distribution in CV [%]	Color
200	508	316	23,436.3	4,665.90	3,157.0	88	19.7	Blue

Assay Class: High Sensitivity DNA Assay  
 Data Path: C:\...ents and Settings\Bioanalyzer\2013-10-31\2013-10-31\_002.xad

Created: 10/31/2013 10:23:46 AM  
 Modified: 10/31/2013 11:05:29 AM

**Electropherogram Summary Continued ...**



**Overall Results for sample 6 : C12 RNA-Seq 1:11**

Number of peaks found: 19      Corr. Area 1: 1,985.2  
 Noise: 0.2

**Peak table for sample 6 : C12 RNA-Seq 1:11**

Peak	Size [bp]	Conc. [pg/μl]	Molarity [pmol/l]	Observations
1	35	125.00	5,411.3	Lower Marker
2	277	1,203.23	6,577.6	
3	284	270.56	1,441.3	
4	290	2,195.52	11,486.6	
5	399	277.73	1,053.5	
6	514	21.32	62.9	
7	548	20.97	58.0	
8	627	60.42	145.9	
9	653	28.72	66.6	
10	682	28.09	62.4	
11	709	29.13	62.2	
12	846	27.21	48.7	
13	920	30.84	50.8	
14	1,008	24.17	36.3	
15	1,181	17.10	21.9	
16	1,375	20.25	22.3	
17	1,504	15.50	15.6	
18	1,669	12.13	11.0	
19	1,784	12.78	10.9	
20	2,097	11.48	8.3	
21	10,380	75.00	10.9	Upper Marker

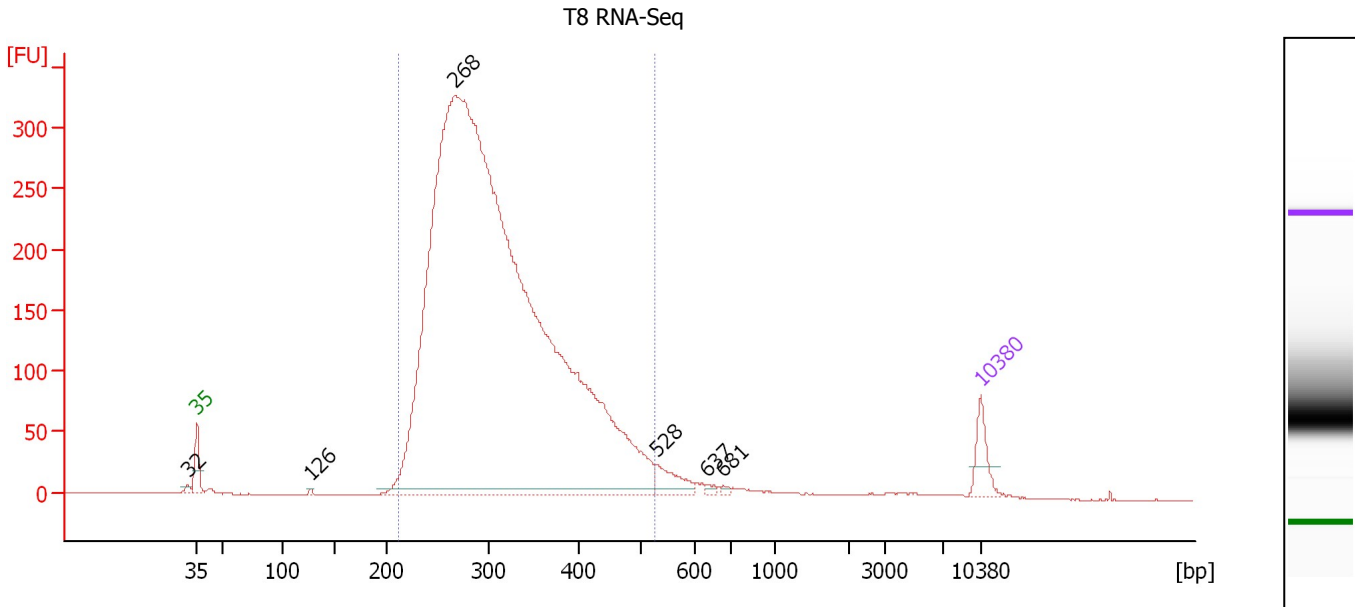
**Region table for sample 6 : C12 RNA-Seq 1:11**

From [bp]	To [bp]	Average Size [bp]	Molarity [pmol/l]	Conc. [pg/μl]	Corr. Area	% of Total	Size distribution in CV [%]	Color
215	495	319	18,954.7	3,836.62	1,985.2	81	17.8	Blue

Assay Class: High Sensitivity DNA Assay  
 Data Path: C:\...ents and Settings\Bioanalyzer\2013-10-31\2013-10-31\_002.xad

Created: 10/31/2013 10:23:46 AM  
 Modified: 10/31/2013 11:05:29 AM

**Electropherogram Summary Continued ...**



**Overall Results for sample 7 : T8 RNA-Seq**

Number of peaks found: 6                      Corr. Area 1: 5,117.1  
 Noise: 0.2

**Peak table for sample 7 : T8 RNA-Seq**

Peak	Size [bp]	Conc. [pg/μl]	Molarity [pmol/l]	Observations
1	32	0.00	0.0	
2	35	125.00	5,411.3	Lower Marker
3	126	7.53	90.3	
4	268	8,432.80	47,714.0	
5	528	90.08	258.6	
6	637	10.13	24.1	
7	681	7.45	16.6	
8	10,380	75.00	10.9	Upper Marker

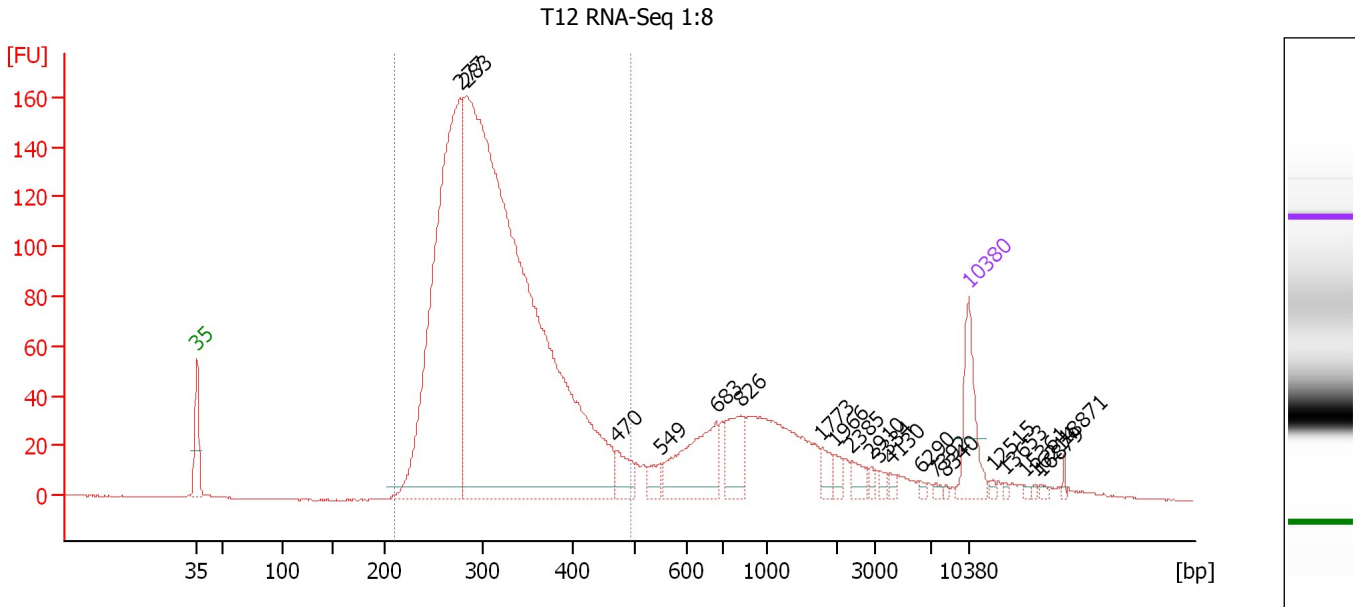
**Region table for sample 7 : T8 RNA-Seq**

From [bp]	To [bp]	Average Size [bp]	Molarity [pmol/l]	Conc. [pg/μl]	Corr. Area	% of Total	Size distribution in CV [%]	Color
213	526	316	38,693.9	7,667.81	5,117.1	96	20.5	Blue

Assay Class: High Sensitivity DNA Assay  
 Data Path: C:\...ents and Settings\Bioanalyzer\2013-10-31\2013-10-31\_002.xad

Created: 10/31/2013 10:23:46 AM  
 Modified: 10/31/2013 11:05:29 AM

**Electropherogram Summary Continued ...**



**Overall Results for sample 8 : T12 RNA-Seq 1:8**

Number of peaks found: 21                      Corr. Area 1: 2,306.3  
 Noise: 0.2

**Peak table for sample 8 : T12 RNA-Seq 1:8**

Peak	Size [bp]	Conc. [pg/μl]	Molarity [pmol/l]	Observations
1	35	125.00	5,411.3	Lower Marker
2	277	1,032.87	5,656.3	
3	283	2,375.02	12,734.8	
4	470	45.96	148.0	
5	549	23.75	65.6	
6	683	146.61	325.2	
7	826	72.70	133.4	
8	1,773	20.22	17.3	
9	1,966	12.19	9.4	
10	2,385	18.05	11.5	
11	2,910	7.44	3.9	
12	3,334	8.44	3.8	
13	4,130	7.56	2.8	
14	6,290	4.38	1.1	
15	7,392	3.91	0.8	
16	8,340	2.69	0.5	
17	10,380	75.00	10.9	Upper Marker
18	12,515	0.00	0.0	
19	13,653	0.00	0.0	
20	15,361	0.00	0.0	
21	16,214	0.00	0.0	
22	16,879	0.00	0.0	
23	18,871	0.00	0.0	

Assay Class: High Sensitivity DNA Assay  
Data Path: C:\...ents and Settings\Bioanalyzer\2013-10-31\2013-10-31\_002.xad

Created: 10/31/2013 10:23:46 AM  
Modified: 10/31/2013 11:05:29 AM

**Electropherogram Summary Continued ...****... Region table for sample 8 : T12 RNA-Seq 1:8**

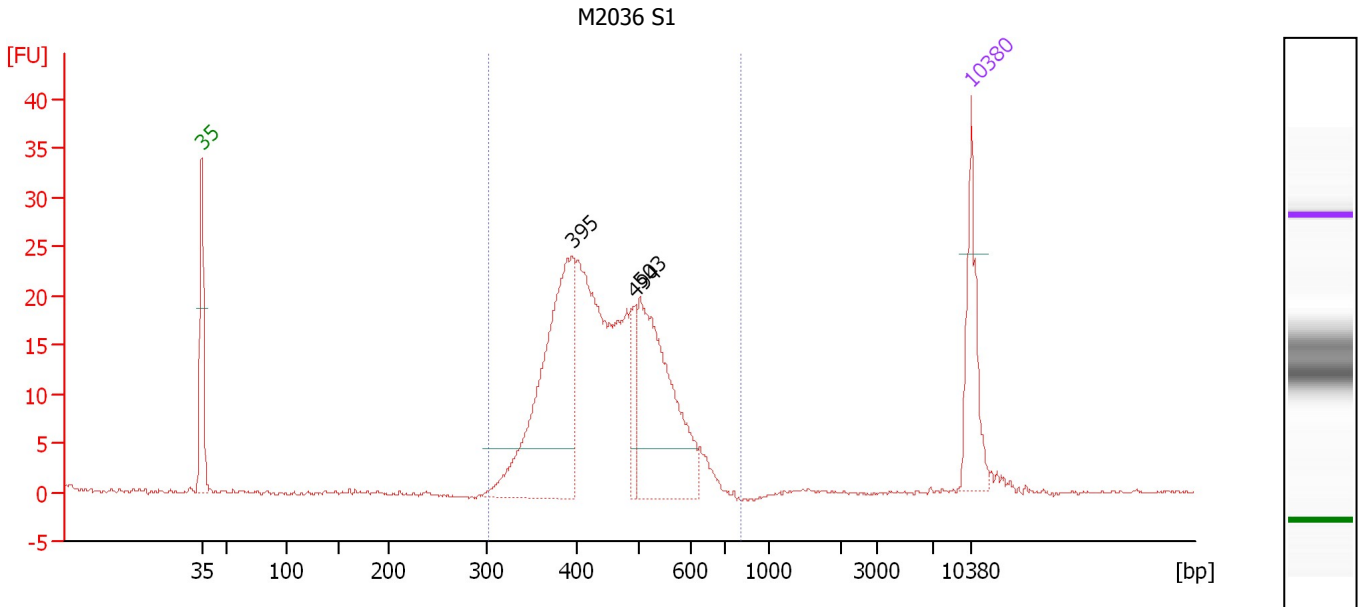
<b>From [bp]</b>	<b>To [bp]</b>	<b>Average Size [bp]</b>	<b>Molarity [pmol/l]</b>	<b>Conc. [pg/μl]</b>	<b>Corr. Area</b>	<b>% of Total</b>	<b>Size distribution in CV [%]</b>	<b>Co lor</b>
211	492	315	15,989.2	3,210.03	2,306.3	78	17.3	■



Assay Class: High Sensitivity DNA Assay  
 Data Path: C:\...ents and Settings\Bioanalyzer\2013-10-31\2013-10-31\_002.xad

Created: 10/31/2013 10:23:46 AM  
 Modified: 10/31/2013 11:05:29 AM

**Electropherogram Summary Continued ...**



**Overall Results for sample 9 : M2036 S1**

Number of peaks found: 3                      Corr. Area 1: 322.1  
 Noise: 0.1

**Peak table for sample 9 : M2036 S1**

Peak	Size [bp]	Conc. [pg/μl]	Molarity [pmol/l]	Observations
1	35	125.00	5,411.3	Lower Marker
2	395	360.48	1,382.5	
3	494	47.03	144.2	
4	503	274.09	825.1	
5	10,380	75.00	10.9	Upper Marker

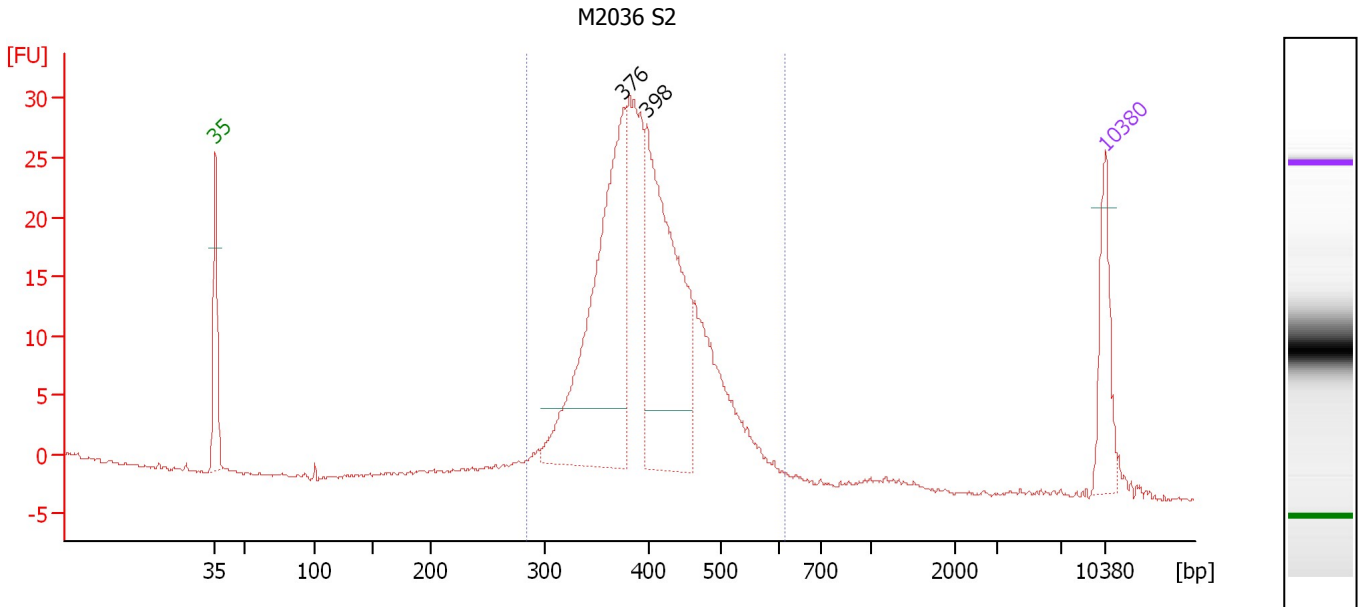
**Region table for sample 9 : M2036 S1**

From [bp]	To [bp]	Average Size [bp]	Molarity [pmol/l]	Conc. [pg/μl]	Corr. Area	% of Total	Size distribution in CV [%]	Color
301	799	452	3,573.6	1,030.42	322.1	99	16.6	Blue

Assay Class: High Sensitivity DNA Assay  
 Data Path: C:\...ents and Settings\Bioanalyzer\2013-10-31\2013-10-31\_002.xad

Created: 10/31/2013 10:23:46 AM  
 Modified: 10/31/2013 11:05:29 AM

**Electropherogram Summary Continued ...**



**Overall Results for sample 10 : M2036 S2**

Number of peaks found: 2                      Corr. Area 1: 367.1  
 Noise: 0.2

**Peak table for sample 10 : M2036 S2**

Peak	Size [bp]	Conc. [pg/μl]	Molarity [pmol/l]	Observations
1	35	125.00	5,411.3	Lower Marker
2	376	529.32	2,135.8	
3	398	457.98	1,742.0	
4	10,380	75.00	10.9	Upper Marker

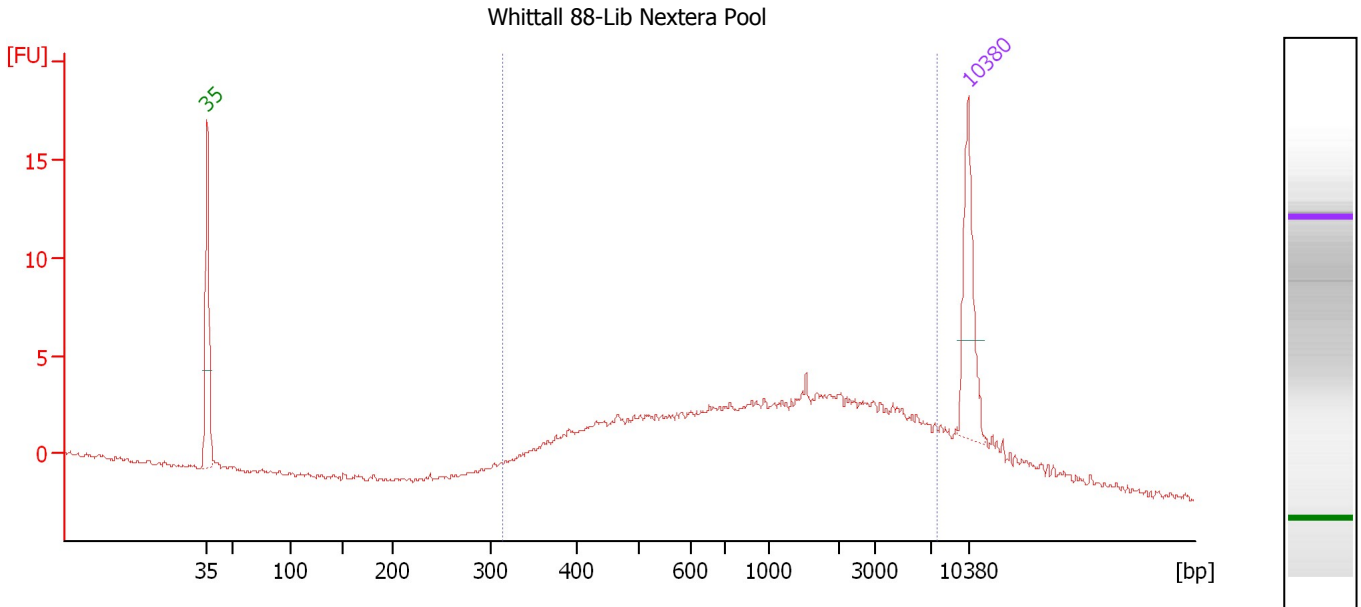
**Region table for sample 10 : M2036 S2**

From [bp]	To [bp]	Average Size [bp]	Molarity [pmol/l]	Conc. [pg/μl]	Corr. Area	% of Total	Size distribution in CV [%]	Color
284	613	406	6,018.5	1,575.61	367.1	97	14.2	Blue

Assay Class: High Sensitivity DNA Assay  
 Data Path: C:\...ents and Settings\Bioanalyzer\2013-10-31\2013-10-31\_002.xad

Created: 10/31/2013 10:23:46 AM  
 Modified: 10/31/2013 11:05:29 AM

**Electropherogram Summary Continued ...**



**Overall Results for sample 11 : Whittall 88-Lib Nextera Pool**

Number of peaks found: 0                      Corr. Area 1: 134.7  
 Noise: 0.1

**Peak table for sample 11 : Whittall 88-Lib Nextera Pool**

Peak	Size [bp]	Conc. [pg/μl]	Molarity [pmol/l]	Observations
1	35	125.00	5,411.3	Lower Marker
2	10,380	75.00	10.9	Upper Marker

**Region table for sample 11 : Whittall 88-Lib Nextera Pool**

From [bp]	To [bp]	Average Size [bp]	Molarity [pmol/l]	Conc. [pg/μl]	Corr. Area	% of Total	Size distribution in CV [%]	Color
314	7,613	1,736	1,624.4	799.73	134.7	89	98.6	Blue

Assay Class: High Sensitivity DNA Assay  
Data Path: C:\...ents and Settings\Bioanalyzer\2013-10-31\2013-10-31\_002.xad

Created: 10/31/2013 10:23:46 AM  
Modified: 10/31/2013 11:05:29 AM

**Gel Image**

