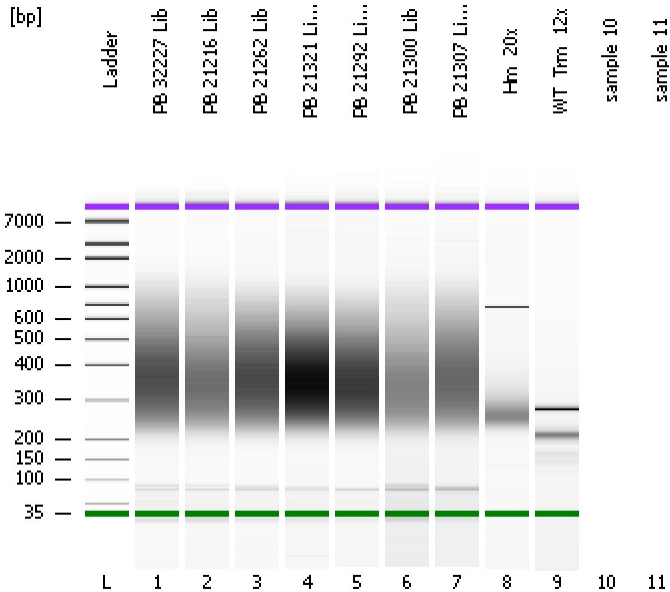


Assay Class: High Sensitivity DNA Assay
 Data Path: C:\...ents and Settings\Bioanalyzer\2013-10-31\2013-10-31_005.xad

Created: 10/31/2013 4:08:46 PM
 Modified: 10/31/2013 4:52:03 PM

Electrophoresis File Run Summary



Instrument Information:

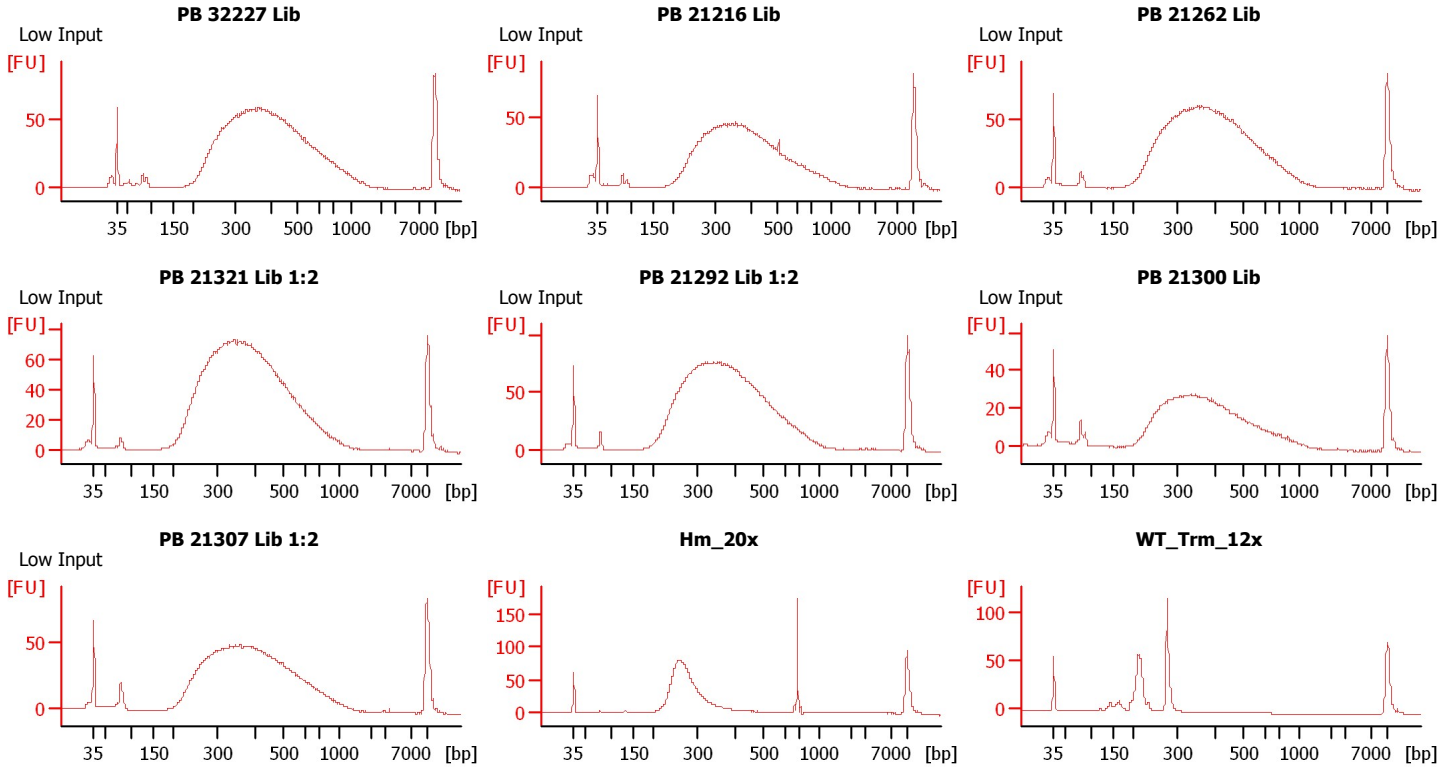
Instrument Name: DE13701086 Firmware: C.01.069
 Serial#: DE13701086 Type: G2938B

Assay Information:

Assay Origin Path: C:\Program Files\Agilent\2100 bioanalyzer\2100 expert\assays\dsDNA\High Sensitivity DNA.xsy
 Assay Class: High Sensitivity DNA Assay
 Version: 1.03
 Assay Comments: Copyright © 2003-2010 Agilent Technologies

Chip Information:

Chip Lot #: Reagent Kit Lot #:
 Chip Comments:



Assay Class: High Sensitivity DNA Assay
Data Path: C:\...ents and Settings\Bioanalyzer\2013-10-31\2013-10-31_005.xad

Created: 10/31/2013 4:08:46 PM
Modified: 10/31/2013 4:52:03 PM

Electrophoresis File Run Summary (Chip Summary)

Sample Name	Sample Comment	Rest. Digest	Status	Observation	Result Label	Result Color
PB 32227 Lib	Low Input	<input type="checkbox"/>	✓			
PB 21216 Lib	Low Input	<input type="checkbox"/>	✓			
PB 21262 Lib	Low Input	<input type="checkbox"/>	✓			
PB 21321 Lib 1:2	Low Input	<input type="checkbox"/>	✓			
PB 21292 Lib 1:2	Low Input	<input type="checkbox"/>	✓			
PB 21300 Lib	Low Input	<input type="checkbox"/>	✓			
PB 21307 Lib 1:2	Low Input	<input type="checkbox"/>	✓			
Hm_20x		<input type="checkbox"/>	✓			
WT_Trm_12x		<input type="checkbox"/>	✓			
sample 10		<input type="checkbox"/>				
sample 11		<input type="checkbox"/>				
Ladder		<input type="checkbox"/>	✓			

Chip Lot #

Reagent Kit Lot #

Chip Comments :

Assay Class: High Sensitivity DNA Assay
 Data Path: C:\...ents and Settings\Bioanalyzer\2013-10-31\2013-10-31_005.xad

Created: 10/31/2013 4:08:46 PM
 Modified: 10/31/2013 4:52:03 PM

Electrophoresis Assay Details

General Analysis Settings

Number of Available Sample and Ladder Wells (Max.) : 12
 Minimum Visible Range [s] : 32
 Maximum Visible Range [s] : 138
 Start Analysis Time Range [s] : 33
 End Analysis Time Range [s] : 137.5
 Ladder Concentration [pg/μl] : 1950
 Uses Standard Area for Ladder Fragments
 Lower Marker Concentration [pg/μl] : 125
 Upper Marker Concentration [pg/μl] : 75
 Used Upper Marker for Quantitation
 Standard Curve Fit is Point to Point
 Show Data Aligned to Lower and Upper Marker

Integrator Settings

Integration Start Time [s] : 33.05
 Integration End Time [s] : 137
 Slope Threshold : 0.8
 Height Threshold [FU] : 5
 Area Threshold : 0.1
 Width Threshold [s] : 0.6
 Baseline Plateau [s] : 0.5

Filter Settings

Filter Width [s] : 0.5
 Polynomial Order : 4

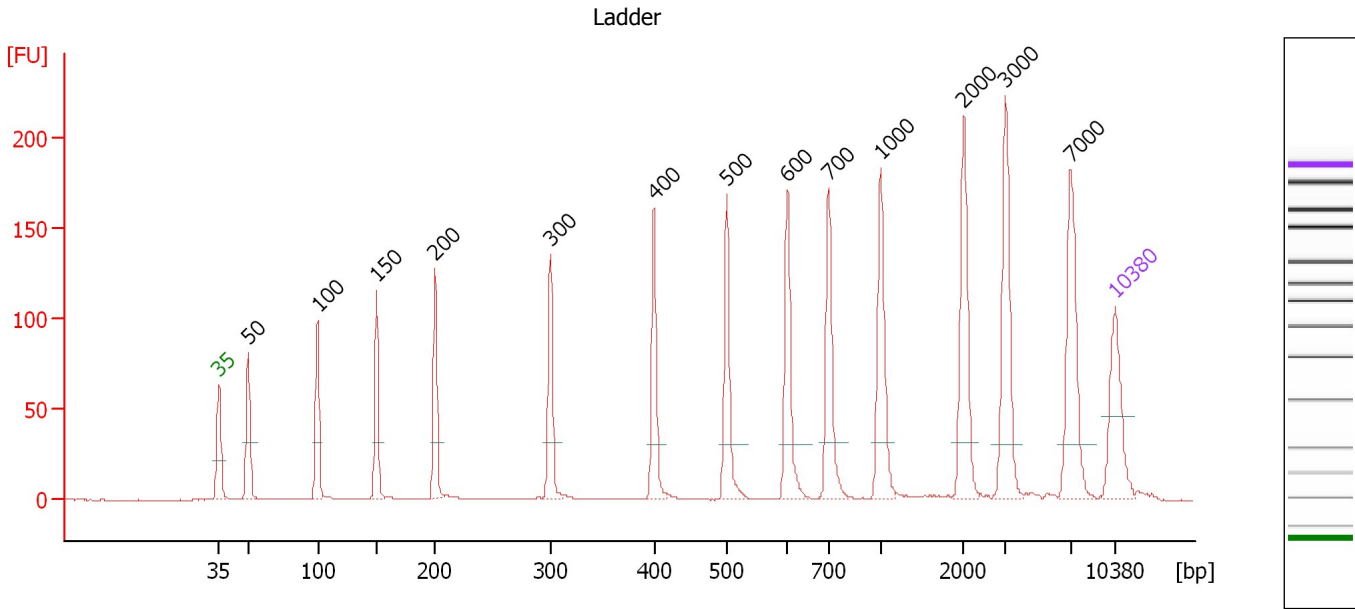
Ladder

Ladder Peak	Size	Area
1	35	160
2	50	210
3	100	208
4	150	221
5	200	242
6	300	270
7	400	305
8	500	306
9	600	336
10	700	321
11	1000	366
12	2000	413
13	3000	411
14	7000	400
15	10380	214

Assay Class: High Sensitivity DNA Assay
 Data Path: C:\...ents and Settings\Bioanalyzer\2013-10-31\2013-10-31_005.xad

Created: 10/31/2013 4:08:46 PM
 Modified: 10/31/2013 4:52:03 PM

Electropherogram Summary



Overall Results for Ladder

Noise: 0.2

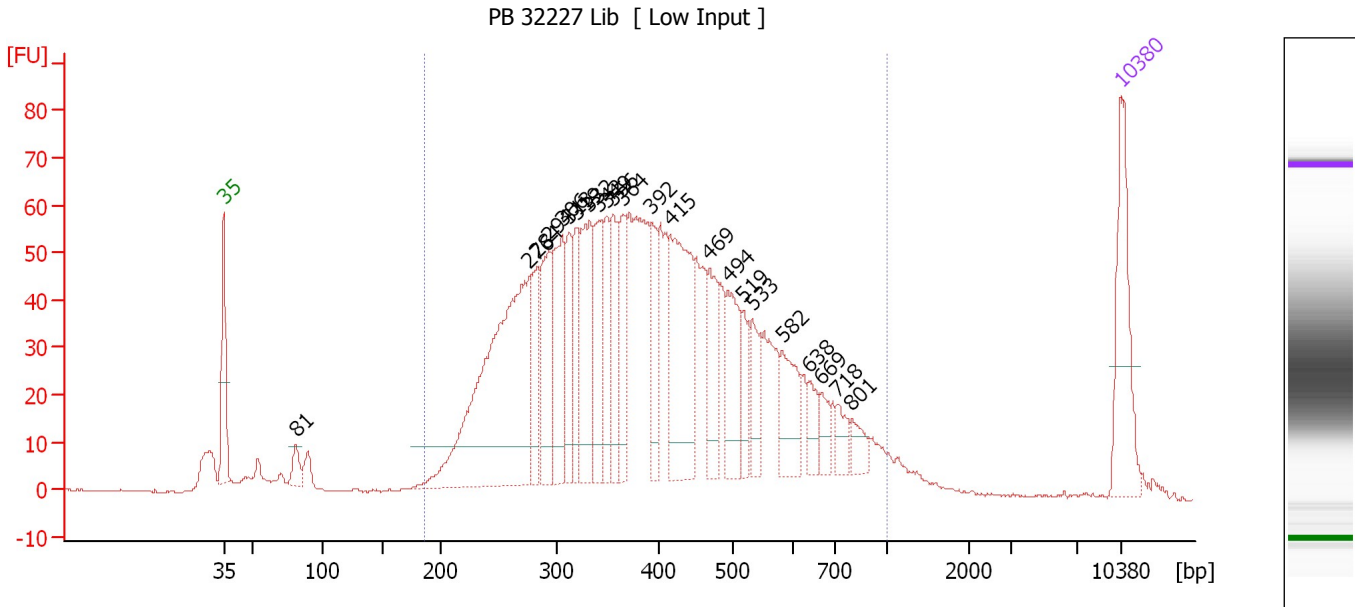
Peak table for Ladder

Peak	Size [bp]	Conc. [pg/μl]	Molarity [pmol/l]	Observations
1	35	125.00	5,411.3	Lower Marker
2	50	150.00	4,545.5	Ladder Peak
3	100	150.00	2,272.7	Ladder Peak
4	150	150.00	1,515.2	Ladder Peak
5	200	150.00	1,136.4	Ladder Peak
6	300	150.00	757.6	Ladder Peak
7	400	150.00	568.2	Ladder Peak
8	500	150.00	454.5	Ladder Peak
9	600	150.00	378.8	Ladder Peak
10	700	150.00	324.7	Ladder Peak
11	1,000	150.00	227.3	Ladder Peak
12	2,000	150.00	113.6	Ladder Peak
13	3,000	150.00	75.8	Ladder Peak
14	7,000	150.00	32.5	Ladder Peak
15	10,380	75.00	10.9	Upper Marker

Assay Class: High Sensitivity DNA Assay
 Data Path: C:\...ents and Settings\Bioanalyzer\2013-10-31\2013-10-31_005.xad

Created: 10/31/2013 4:08:46 PM
 Modified: 10/31/2013 4:52:03 PM

Electropherogram Summary Continued ...



Setpoint Deviations for sample 1 : PB 32227 Lib

Height Threshold [FU] : 8

Overall Results for sample 1 : PB 32227 Lib

Number of peaks found: 23 Corr. Area 1: 1,861.9
 Noise: 0.2

Peak table for sample 1 : PB 32227 Lib


Peak	Size [bp]	Conc. [pg/μl]	Molarity [pmol/l]	Observations
1	35	125.00	5,411.3	Lower Marker
2	81	20.69	388.6	
3	276	410.90	2,251.7	
4	284	53.58	286.0	
5	294	94.07	485.6	
6	306	109.12	541.0	
7	313	57.68	279.4	
8	319	57.89	274.5	
9	332	109.55	499.4	
10	342	82.51	365.4	
11	349	56.36	244.8	
12	356	59.65	254.2	
13	364	63.00	262.0	
14	392	49.24	190.3	
15	415	158.42	578.3	
16	469	56.18	181.6	
17	494	70.32	215.5	
18	519	31.66	92.5	
19	533	38.42	109.3	
20	582	54.36	141.6	
21	638	22.54	53.5	
22	669	18.06	40.9	

Assay Class: High Sensitivity DNA Assay
 Data Path: C:\...ents and Settings\Bioanalyzer\2013-10-31\2013-10-31_005.xad


Created: 10/31/2013 4:08:46 PM
 Modified: 10/31/2013 4:52:03 PM

Electropherogram Summary Continued ...

... Peak table for sample 1 : PB 32227 Lib

Peak	Size [bp]	Conc. [pg/μl]	Molarity [pmol/l]	Observations
23	718	18.47	39.0	
24	801	16.43	31.1	
25	 10,380	75.00	10.9	Upper Marker

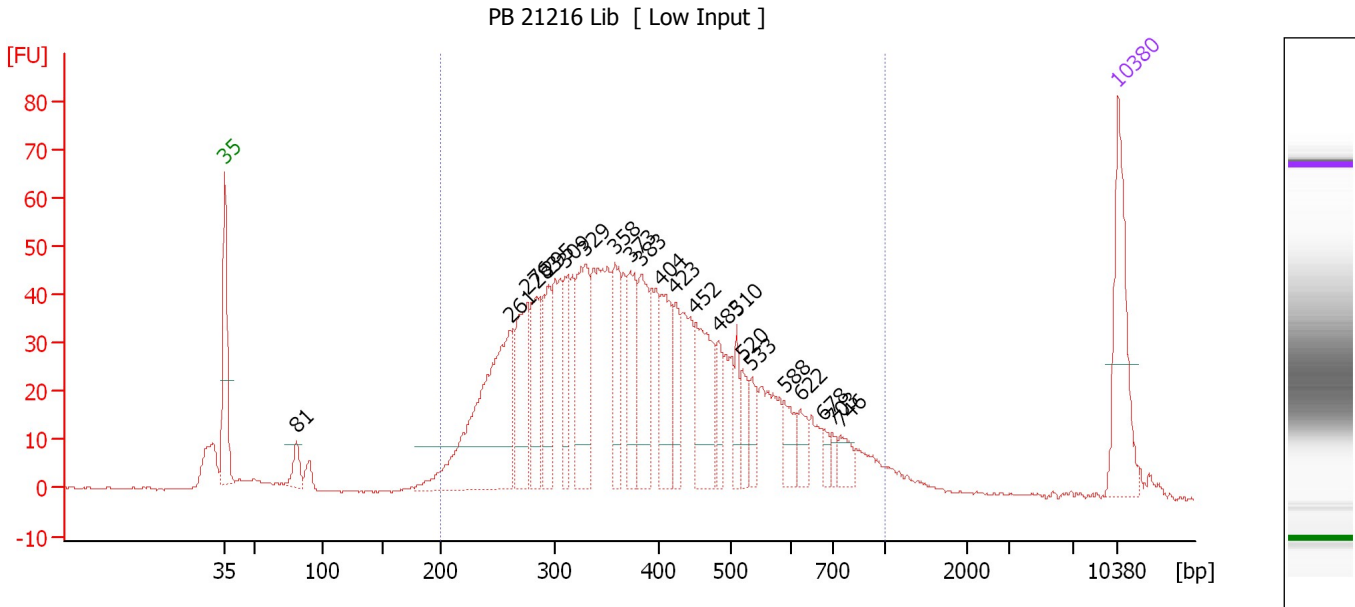
Region table for sample 1 : PB 32227 Lib

From [bp]	To [bp]	Average Size [bp]	Molarity [pmol/l]	Conc. [pg/μl]	Corr. Area	% of Total	Size distribution in CV [%]	Color
187	1,000	414	10,166.8	2,391.16	1,861.9	93	34.7	

Assay Class: High Sensitivity DNA Assay
 Data Path: C:\...ents and Settings\Bioanalyzer\2013-10-31\2013-10-31_005.xad

Created: 10/31/2013 4:08:46 PM
 Modified: 10/31/2013 4:52:03 PM

Electropherogram Summary Continued ...



Setpoint Deviations for sample 2 : PB 21216 Lib

Height Threshold [FU] : 9

Overall Results for sample 2 : PB 21216 Lib

Number of peaks found: 22 Corr. Area 1: 1,407.0
 Noise: 0.2

Peak table for sample 2 : PB 21216 Lib

Peak	Size [bp]	Conc. [pg/μl]	Molarity [pmol/l]	Observations
1	35	125.00	5,411.3	Lower Marker
2	81	24.11	453.3	
3	261	265.84	1,544.5	
4	276	103.89	571.1	
5	283	68.71	367.9	
6	295	62.35	320.7	
7	309	51.96	254.4	
8	329	113.78	523.9	
9	358	66.24	280.3	
10	373	69.23	281.5	
11	383	75.32	297.7	
12	404	72.15	270.4	
13	423	38.08	136.5	
14	452	88.04	295.4	
15	483	26.42	82.8	
16	510	23.97	71.2	
17	520	26.06	76.0	
18	533	21.13	60.1	
19	588	25.28	65.1	
20	622	18.47	45.0	
21	678	10.24	22.9	
22	703	8.82	19.0	

Assay Class: High Sensitivity DNA Assay
 Data Path: C:\...ents and Settings\Bioanalyzer\2013-10-31\2013-10-31_005.xad


Created: 10/31/2013 4:08:46 PM
 Modified: 10/31/2013 4:52:03 PM

Electropherogram Summary Continued ...

... Peak table for sample 2 : PB 21216 Lib

Peak	Size [bp]	Conc. [pg/μl]	Molarity [pmol/l]	Observations
23	746	17.32	35.2	
24	 10,380	75.00	10.9	Upper Marker

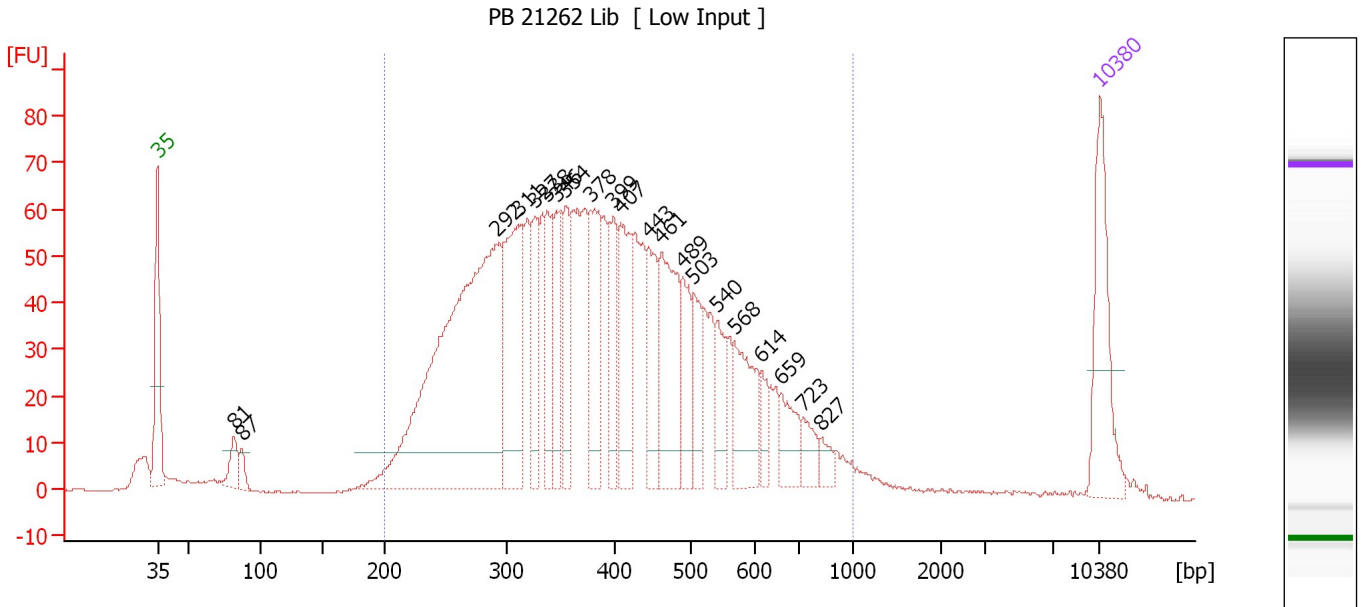
Region table for sample 2 : PB 21216 Lib

From [bp]	To [bp]	Average Size [bp]	Molarity [pmol/l]	Conc. [pg/μl]	Corr. Area	% of Total	Size distribution in CV [%]	Color
200	1,000	404	8,329.0	1,928.43	1,407.0	92	34.6	

Assay Class: High Sensitivity DNA Assay
 Data Path: C:\...ents and Settings\Bioanalyzer\2013-10-31\2013-10-31_005.xad

Created: 10/31/2013 4:08:46 PM
 Modified: 10/31/2013 4:52:03 PM

Electropherogram Summary Continued ...



Setpoint Deviations for sample 3 : PB 21262 Lib

Height Threshold [FU] : 8

Overall Results for sample 3 : PB 21262 Lib

Number of peaks found: 21 Corr. Area 1: 1,893.6
 Noise: 0.2

Peak table for sample 3 : PB 21262 Lib

Peak	Size [bp]	Conc. [pg/μl]	Molarity [pmol/l]	Observations
1	35	125.00	5,411.3	Lower Marker
2	81	27.39	511.5	
3	87	14.35	251.0	
4	292	555.99	2,883.5	
5	311	162.17	790.8	
6	327	63.84	295.8	
7	338	58.91	264.4	
8	346	71.36	312.5	
9	354	61.91	264.7	
10	378	99.39	398.3	
11	399	53.43	203.1	
12	407	88.12	327.9	
13	443	68.04	232.6	
14	461	117.32	385.4	
15	489	51.01	158.1	
16	503	44.63	134.4	
17	540	39.30	110.3	
18	568	70.28	187.6	
19	614	19.76	48.7	
20	659	33.82	77.7	
21	723	21.76	45.6	
22	827	11.80	21.6	


Assay Class: High Sensitivity DNA Assay
Data Path: C:\...ents and Settings\Bioanalyzer\2013-10-31\2013-10-31_005.xad

Created: 10/31/2013 4:08:46 PM
Modified: 10/31/2013 4:52:03 PM

Electropherogram Summary Continued ...**... Peak table for sample 3 : PB 21262 Lib**

Peak	Size [bp]	Conc. [pg/ μ l]	Molarity [pmol/l]	Observations
23	10,380	75.00	10.9	Upper Marker

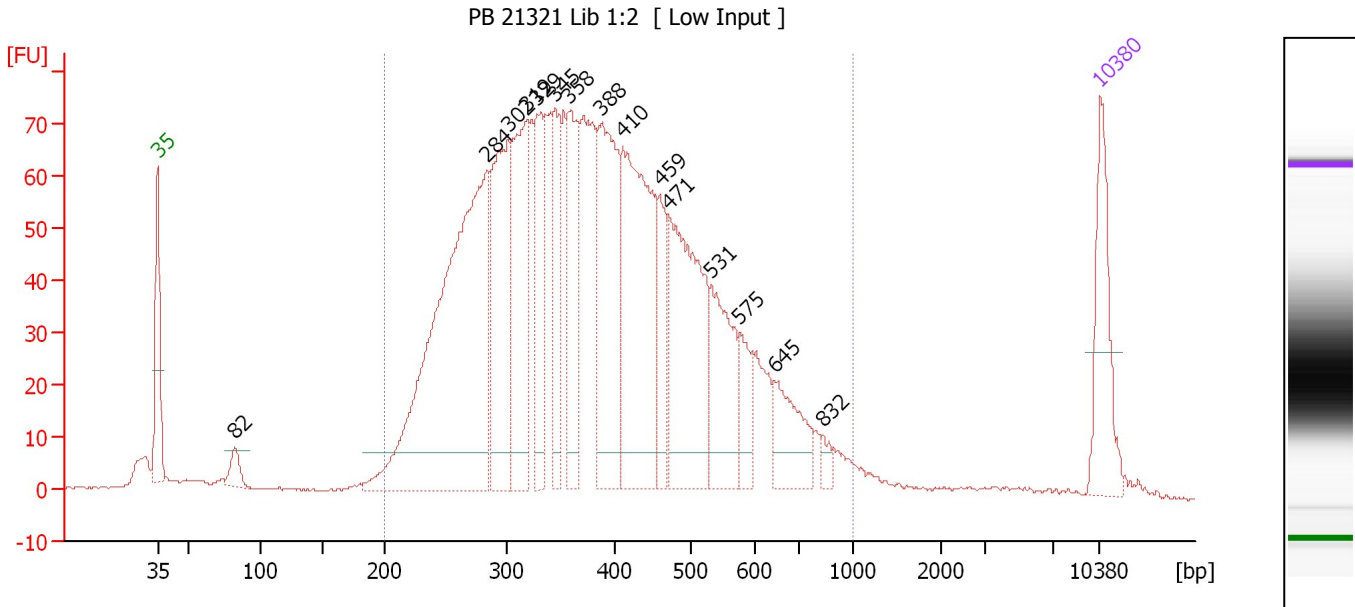
Region table for sample 3 : PB 21262 Lib

From [bp]	To [bp]	Average Size [bp]	Molarity [pmol/l]	Conc. [pg/ μ l]	Corr. Area	% of Total	Size distribution in CV [%]	Color
200	1,000	409	9,780.1	2,300.21	1,893.6	94	33.3	

Assay Class: High Sensitivity DNA Assay
 Data Path: C:\...ents and Settings\Bioanalyzer\2013-10-31\2013-10-31_005.xad

Created: 10/31/2013 4:08:46 PM
 Modified: 10/31/2013 4:52:03 PM

Electropherogram Summary Continued ...



Setpoint Deviations for sample 4 : PB 21321 Lib 1:2

Height Threshold [FU] : 7

Overall Results for sample 4 : PB 21321 Lib 1:2

Number of peaks found: 15 Corr. Area 1: 2,133.7
 Noise: 0.2

Peak table for sample 4 : PB 21321 Lib 1:2

Peak	Size [bp]	Conc. [pg/µl]	Molarity [pmol/l]	Observations
1	35	125.00	5,411.3	Lower Marker
2	82	25.34	469.6	
3	284	632.44	3,377.1	
4	302	236.29	1,186.7	
5	319	195.65	928.0	
6	329	106.12	489.4	
7	345	96.47	424.1	
8	358	129.69	548.7	
9	388	223.78	874.6	
10	410	292.14	1,079.7	
11	459	69.26	228.6	
12	471	234.22	753.0	
13	531	115.35	329.4	
14	575	45.19	119.0	
15	645	70.23	165.0	
16	832	10.38	18.9	
17	10,380	75.00	10.9	Upper Marker

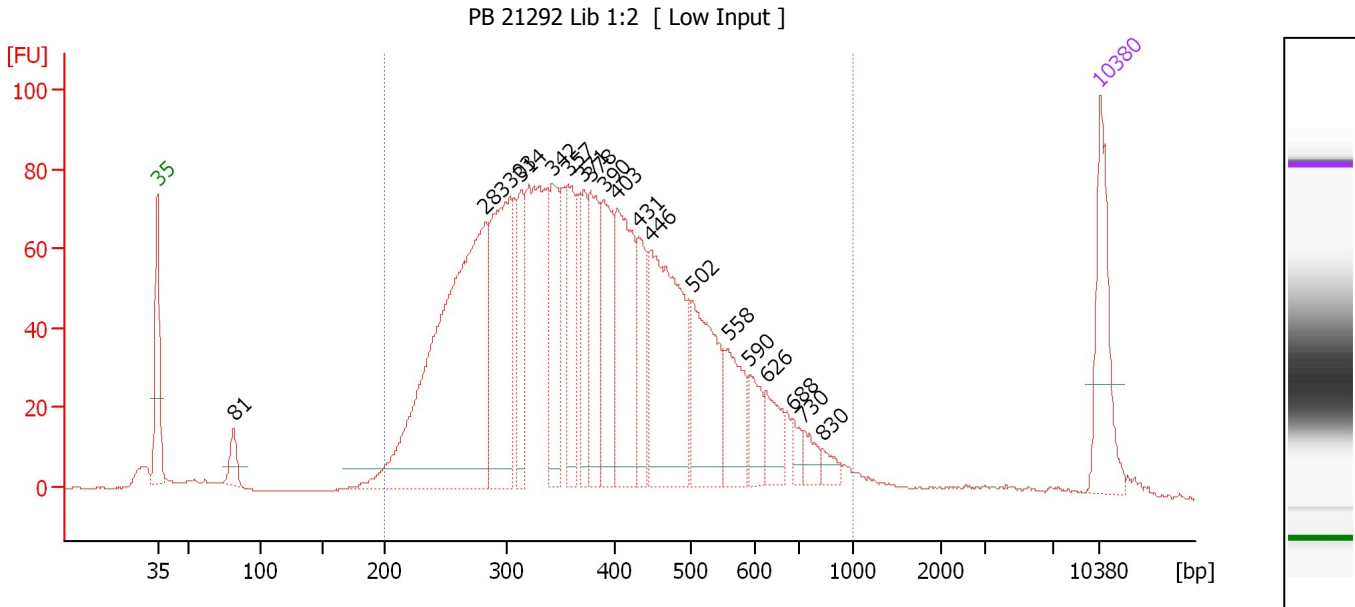
Region table for sample 4 : PB 21321 Lib 1:2

From [bp]	To [bp]	Average Size [bp]	Molarity [pmol/l]	Conc. [pg/µl]	Corr. Area	% of Total	Size distribution in CV [%]	Color
200	1,000	400	12,998.1	3,022.57	2,133.7	94	32.4	Blue

Assay Class: High Sensitivity DNA Assay
 Data Path: C:\...ents and Settings\Bioanalyzer\2013-10-31\2013-10-31_005.xad

Created: 10/31/2013 4:08:46 PM
 Modified: 10/31/2013 4:52:03 PM

Electropherogram Summary Continued ...



Overall Results for sample 5 : PB 21292 Lib 1:2

Number of peaks found: 19 Corr. Area 1: 2,288.2
 Noise: 0.2

Peak table for sample 5 : PB 21292 Lib 1:2

Peak	Size [bp]	Conc. [pg/μl]	Molarity [pmol/l]	Observations
1	35	125.00	5,411.3	Lower Marker
2	81	29.05	543.7	
3	283	572.60	3,069.6	
4	303	233.03	1,163.3	
5	314	75.75	365.7	
6	342	100.04	442.9	
7	357	80.06	339.8	
8	371	66.23	270.4	
9	378	103.63	415.7	
10	390	111.79	434.6	
11	403	153.98	578.6	
12	431	69.21	243.2	
13	446	228.47	776.1	
14	502	137.31	414.8	
15	558	68.28	185.3	
16	590	36.29	93.2	
17	626	35.41	85.7	
18	688	13.16	29.0	
19	730	17.40	36.1	
20	830	12.02	21.9	
21	10,380	75.00	10.9	Upper Marker

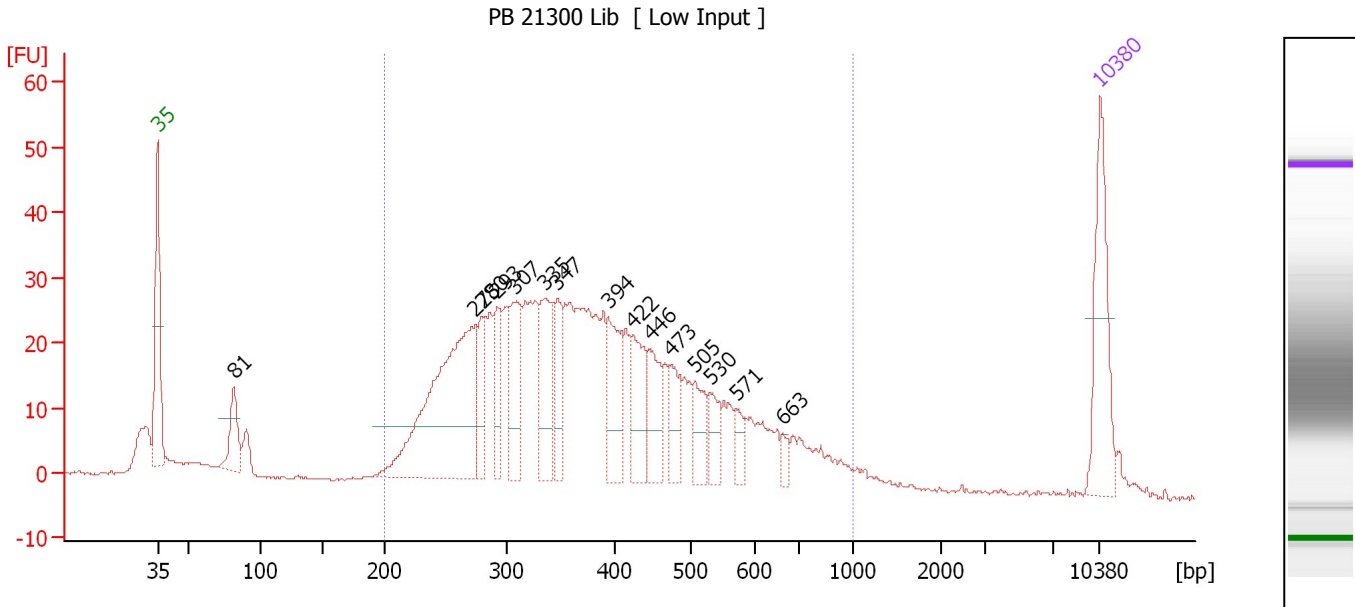
Region table for sample 5 : PB 21292 Lib 1:2

From [bp]	To [bp]	Average Size [bp]	Molarity [pmol/l]	Conc. [pg/μl]	Corr. Area	% of Total	Size distribution in CV [%]	Color
200	1,000	397	11,428.1	2,634.59	2,288.2	94	32.7	Blue

Assay Class: High Sensitivity DNA Assay
 Data Path: C:\...ents and Settings\Bioanalyzer\2013-10-31\2013-10-31_005.xad

Created: 10/31/2013 4:08:46 PM
 Modified: 10/31/2013 4:52:03 PM

Electropherogram Summary Continued ...



Setpoint Deviations for sample 6 : PB 21300 Lib

Height Threshold [FU] : 8

Overall Results for sample 6 : PB 21300 Lib

Number of peaks found: 15 Corr. Area 1: 837.1
 Noise: 0.2

Peak table for sample 6 : PB 21300 Lib

Peak	Size [bp]	Conc. [pg/μl]	Molarity [pmol/l]	Observations
1	35	125.00	5,411.3	Lower Marker
2	81	48.59	909.1	
3	275	286.75	1,582.6	
4	280	45.19	244.2	
5	293	46.52	240.8	
6	307	68.64	338.4	
7	335	82.42	372.4	
8	347	43.25	188.9	
9	394	64.70	249.0	
10	422	61.13	219.3	
11	446	50.16	170.5	
12	473	33.57	107.5	
13	505	34.57	103.8	
14	530	26.50	75.8	
15	571	17.62	46.7	
16	663	8.98	20.5	
17	10,380	75.00	10.9	Upper Marker

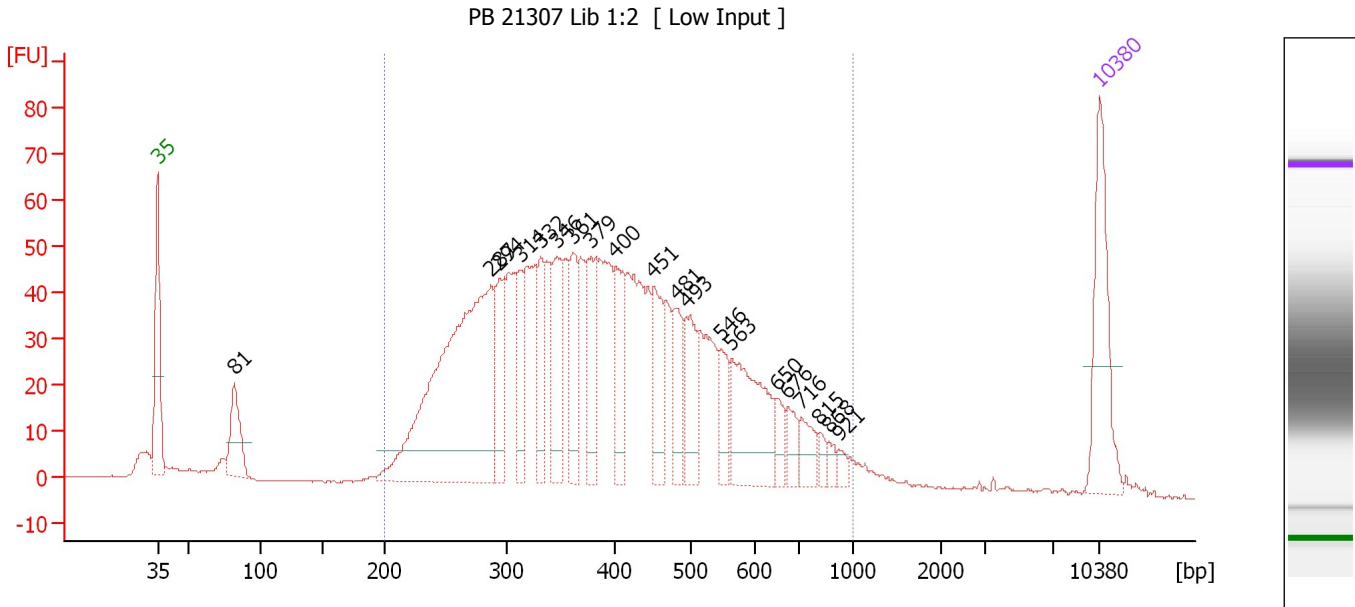
Region table for sample 6 : PB 21300 Lib

From [bp]	To [bp]	Average Size [bp]	Molarity [pmol/l]	Conc. [pg/μl]	Corr. Area	% of Total	Size distribution in CV [%]	Color
200	1,000	399	6,947.7	1,594.06	837.1	88	34.6	Blue

Assay Class: High Sensitivity DNA Assay
 Data Path: C:\...ents and Settings\Bioanalyzer\2013-10-31\2013-10-31_005.xad

Created: 10/31/2013 4:08:46 PM
 Modified: 10/31/2013 4:52:03 PM

Electropherogram Summary Continued ...



Setpoint Deviations for sample 7 : PB 21307 Lib 1:2

Height Threshold [FU] : 7

Overall Results for sample 7 : PB 21307 Lib 1:2

Number of peaks found: 20 Corr. Area 1: 1,542.3
 Noise: 0.1

Peak table for sample 7 : PB 21307 Lib 1:2

Peak	Size [bp]	Conc. [pg/μl]	Molarity [pmol/l]	Observations
1	35	125.00	5,411.3	Lower Marker
2	81	62.60	1,166.2	
3	287	422.79	2,229.0	
4	294	57.45	295.7	
5	314	53.55	258.6	
6	332	53.70	245.3	
7	346	68.54	300.0	
8	361	55.16	231.3	
9	379	59.97	240.0	
10	400	64.50	244.0	
11	451	60.79	204.4	
12	481	46.48	146.4	
13	493	55.46	170.5	
14	546	30.78	85.5	
15	563	103.65	279.1	
16	650	16.98	39.6	
17	676	18.90	42.4	
18	716	24.04	50.9	
19	815	7.83	14.6	
20	868	7.59	13.2	
21	921	6.97	11.5	
22	10,380	75.00	10.9	Upper Marker

Assay Class: High Sensitivity DNA Assay
Data Path: C:\...ents and Settings\Bioanalyzer\2013-10-31\2013-10-31_005.xad

Created: 10/31/2013 4:08:46 PM
Modified: 10/31/2013 4:52:03 PM

Electropherogram Summary Continued ...

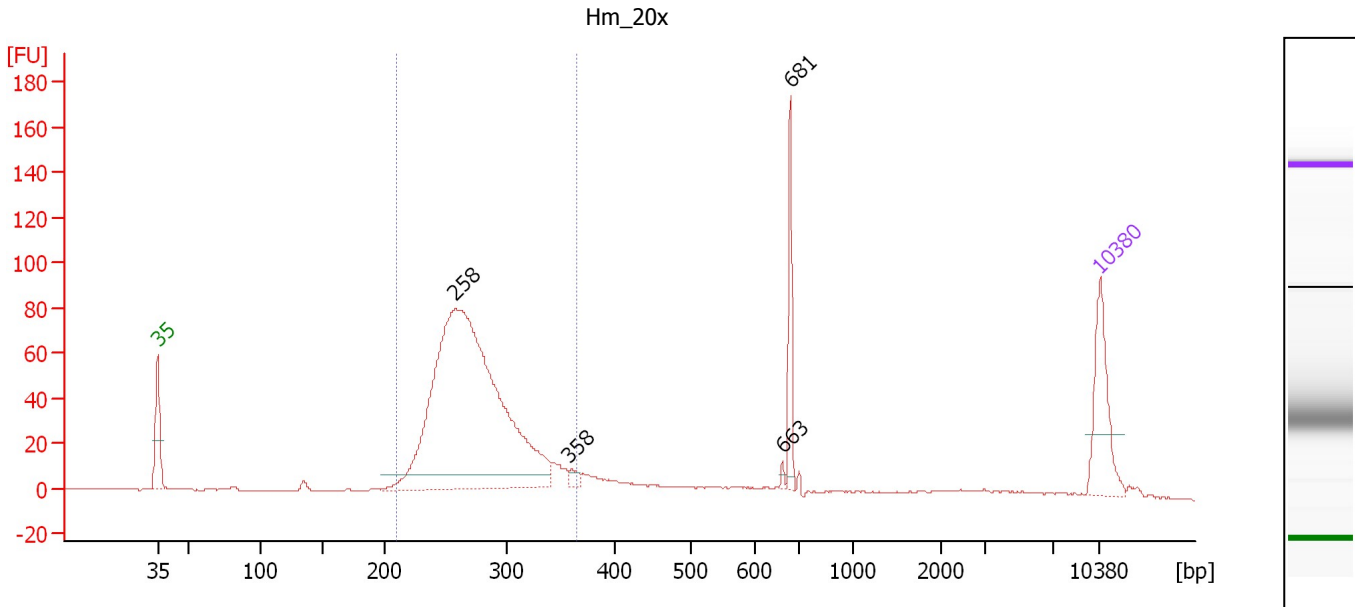
... Region table for sample 7 : PB 21307 Lib 1:2

From [bp]	To [bp]	Average Size [bp]	Molarity [pmol/l]	Conc. [pg/μl]	Corr. Area	% of Total	Size distribution in CV [%]	Color
200	1,000	414	8,312.8	1,970.97	1,542.3	92	34.0	■

Assay Class: High Sensitivity DNA Assay
 Data Path: C:\...ents and Settings\Bioanalyzer\2013-10-31\2013-10-31_005.xad

Created: 10/31/2013 4:08:46 PM
 Modified: 10/31/2013 4:52:03 PM

Electropherogram Summary Continued ...



Setpoint Deviations for sample 8 : Hm_20x

Height Threshold [FU] : 6

Overall Results for sample 8 : Hm_20x

Number of peaks found: 4 Corr. Area 1: 772.0
 Noise: 0.2

Peak table for sample 8 : Hm_20x

Peak	Size [bp]	Conc. [pg/μl]	Molarity [pmol/l]	Observations
1	35	125.00	5,411.3	Lower Marker
2	258	944.65	5,550.1	
3	358	9.82	41.5	
4	663	3.93	9.0	
5	681	55.45	123.3	
6	10,380	75.00	10.9	Upper Marker

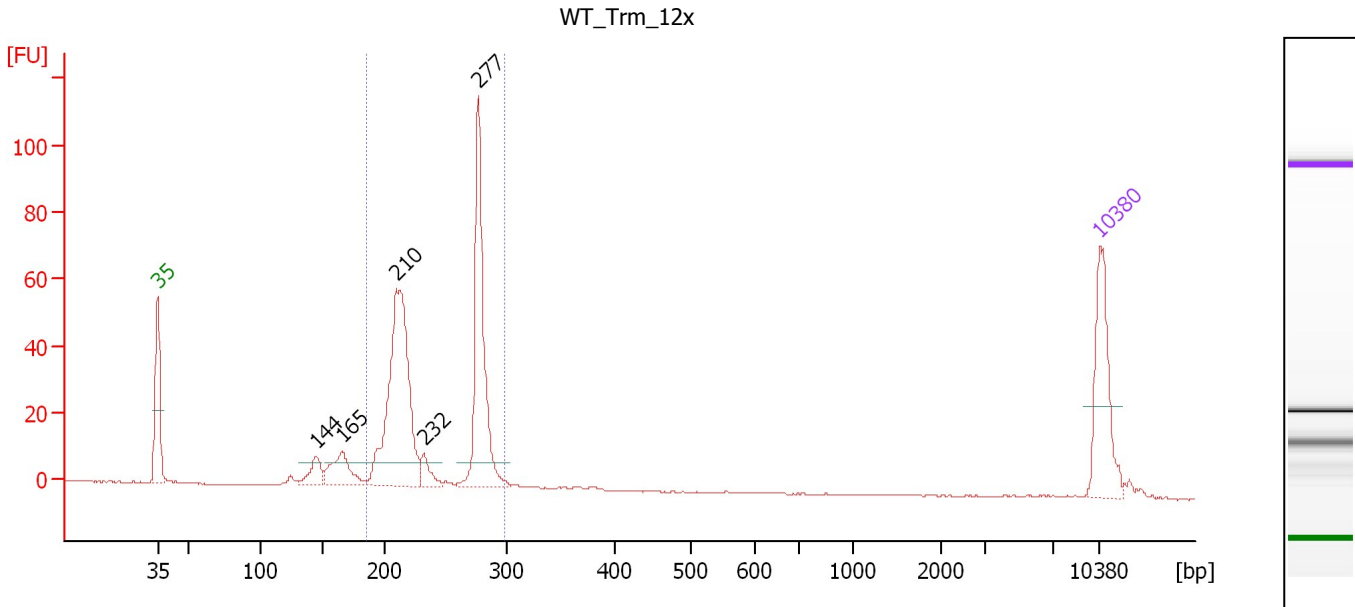
Region table for sample 8 : Hm_20x

From [bp]	To [bp]	Average Size [bp]	Molarity [pmol/l]	Conc. [pg/μl]	Corr. Area	% of Total	Size distribution in CV [%]	Color
209	365	275	5,490.8	984.94	772.0	78	11.4	Blue

Assay Class: High Sensitivity DNA Assay
 Data Path: C:\...ents and Settings\Bioanalyzer\2013-10-31\2013-10-31_005.xad

Created: 10/31/2013 4:08:46 PM
 Modified: 10/31/2013 4:52:03 PM

Electropherogram Summary Continued ...



Setpoint Deviations for sample 9 : WT Trm 12x

Height Threshold [FU] : 7

Overall Results for sample 9 : WT Trm 12x

Number of peaks found: 5 Corr. Area 1: 318.4
 Noise: 0.2

Peak table for sample 9 : WT Trm 12x

Peak	Size [bp]	Conc. [pg/μl]	Molarity [pmol/l]	Observations
1	35	125.00	5,411.3	Lower Marker
2	144	29.34	308.9	
3	165	54.87	502.6	
4	210	294.64	2,129.1	
5	232	20.21	131.7	
6	277	201.85	1,102.9	
7	10,380	75.00	10.9	Upper Marker

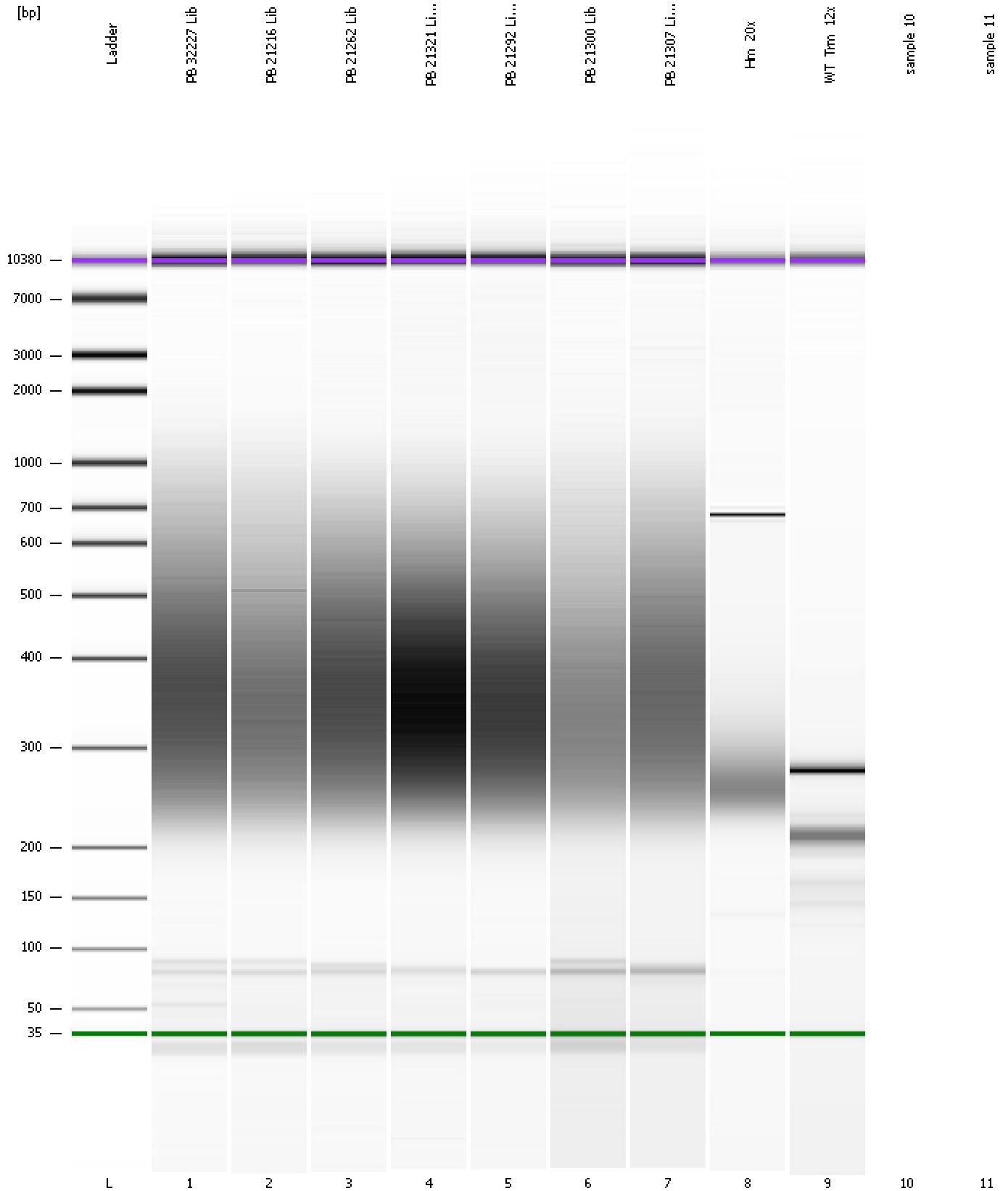
Region table for sample 9 : WT Trm 12x

From [bp]	To [bp]	Average Size [bp]	Molarity [pmol/l]	Conc. [pg/μl]	Corr. Area	% of Total	Size distribution in CV [%]	Color
185	298	241	3,272.7	518.73	318.4	84	14.0	Blue

Assay Class: High Sensitivity DNA Assay
Data Path: C:\...ents and Settings\Bioanalyzer\2013-10-31\2013-10-31_005.xad

Created: 10/31/2013 4:08:46 PM
Modified: 10/31/2013 4:52:03 PM

Gel Image



Assay Class: High Sensitivity DNA Assay
Data Path: C:\...ents and Settings\Bioanalyzer\2013-10-31\2013-10-31_005.xad

Created: 10/31/2013 4:08:46 PM
Modified: 10/31/2013 4:52:03 PM

Invalid Samples

Sample 10 has not been run, no results available.

Sample 11 has not been run, no results available.