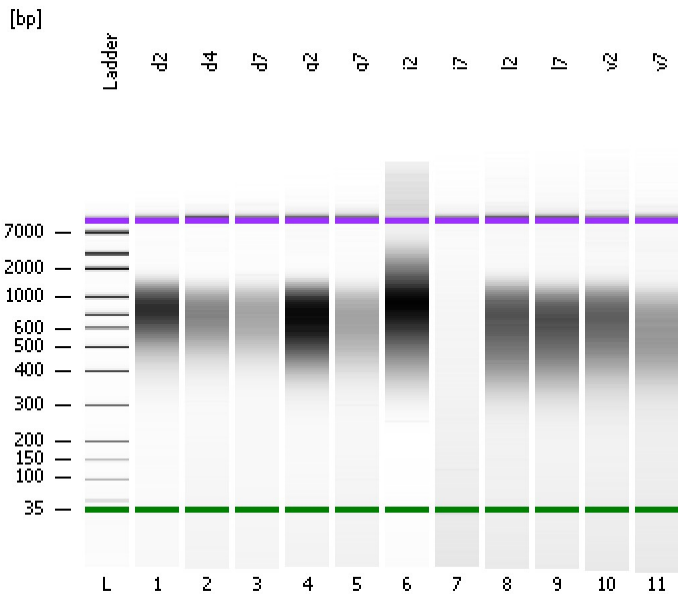


Assay Class: High Sensitivity DNA Assay
Data Path: C:\...ents and Settings\Bioanalyzer\2013-11-07\2013-11-07_001.xad

Created: 11/7/2013 1:59:13 PM
Modified: 11/7/2013 2:46:36 PM

Electrophoresis File Run Summary



Instrument Information:

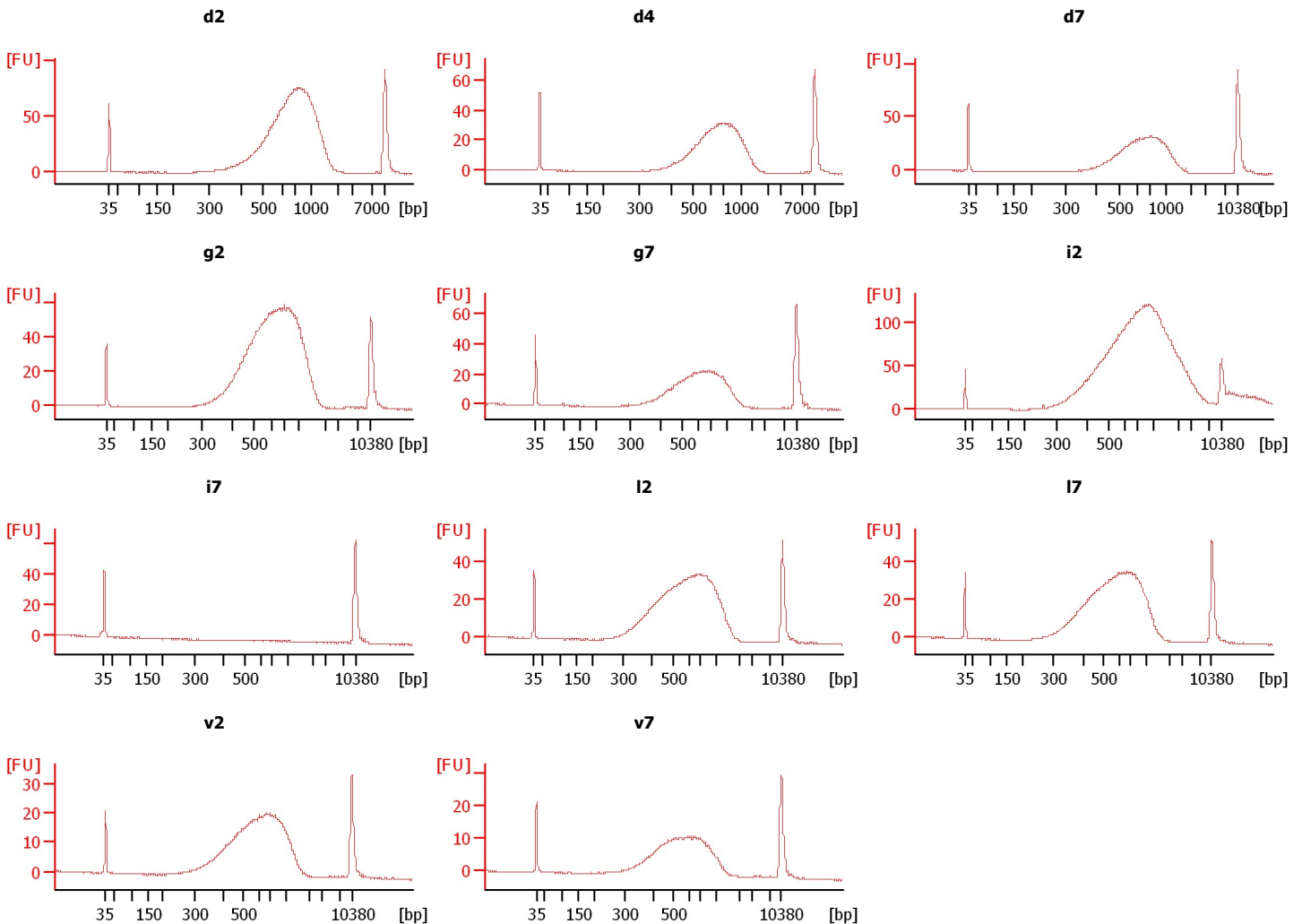
Instrument Name: DE13701086 Firmware: C.01.069
Serial#: DE13701086 Type: G2938B

Assay Information:

Assay Origin Path: C:\Program Files\Agilent\2100 bioanalyzer\2100 expert\assays\dsDNA\High Sensitivity DNA.xsy
Assay Class: High Sensitivity DNA Assay
Version: 1.03
Assay Comments: Copyright © 2003-2010 Agilent Technologies

Chip Information:

Chip Lot #: Reagent Kit Lot #:
Chip Comments:



Assay Class: High Sensitivity DNA Assay
Data Path: C:\...ents and Settings\Bioanalyzer\2013-11-07\2013-11-07_001.xad

Created: 11/7/2013 1:59:13 PM
Modified: 11/7/2013 2:46:36 PM

Electrophoresis File Run Summary (Chip Summary)

Sample Name	Sample Comment	Rest. Digest	Status	Observation	Result Label	Result Color
d2		<input type="checkbox"/>	✓			
d4		<input type="checkbox"/>	✓			
d7		<input type="checkbox"/>	✓			
g2		<input type="checkbox"/>	✓			
g7		<input type="checkbox"/>	✓			
i2		<input type="checkbox"/>	✓			
i7		<input type="checkbox"/>	✓			
l2		<input type="checkbox"/>	✓			
l7		<input type="checkbox"/>	✓			
v2		<input type="checkbox"/>	✓			
v7		<input type="checkbox"/>	✓			
Ladder		<input type="checkbox"/>	✓			

Chip Lot #

Reagent Kit Lot #

Chip Comments :

Assay Class: High Sensitivity DNA Assay
Data Path: C:\...ents and Settings\Bioanalyzer\2013-11-07\2013-11-07_001.xad

Created: 11/7/2013 1:59:13 PM
Modified: 11/7/2013 2:46:36 PM

Electrophoresis Assay Details

General Analysis Settings

Number of Available Sample and Ladder Wells (Max.) : 12
Minimum Visible Range [s] : 32
Maximum Visible Range [s] : 138
Start Analysis Time Range [s] : 33
End Analysis Time Range [s] : 137.5
Ladder Concentration [pg/μl] : 1950
Uses Standard Area for Ladder Fragments
Lower Marker Concentration [pg/μl] : 125
Upper Marker Concentration [pg/μl] : 75
Used Upper Marker for Quantitation
Standard Curve Fit is Point to Point
Show Data Aligned to Lower and Upper Marker

Integrator Settings

Integration Start Time [s] : 33.05
Integration End Time [s] : 137
Slope Threshold : 0.8
Height Threshold [FU] : 5
Area Threshold : 0.1
Width Threshold [s] : 0.6
Baseline Plateau [s] : 0.5

Filter Settings

Filter Width [s] : 0.5
Polynomial Order : 4

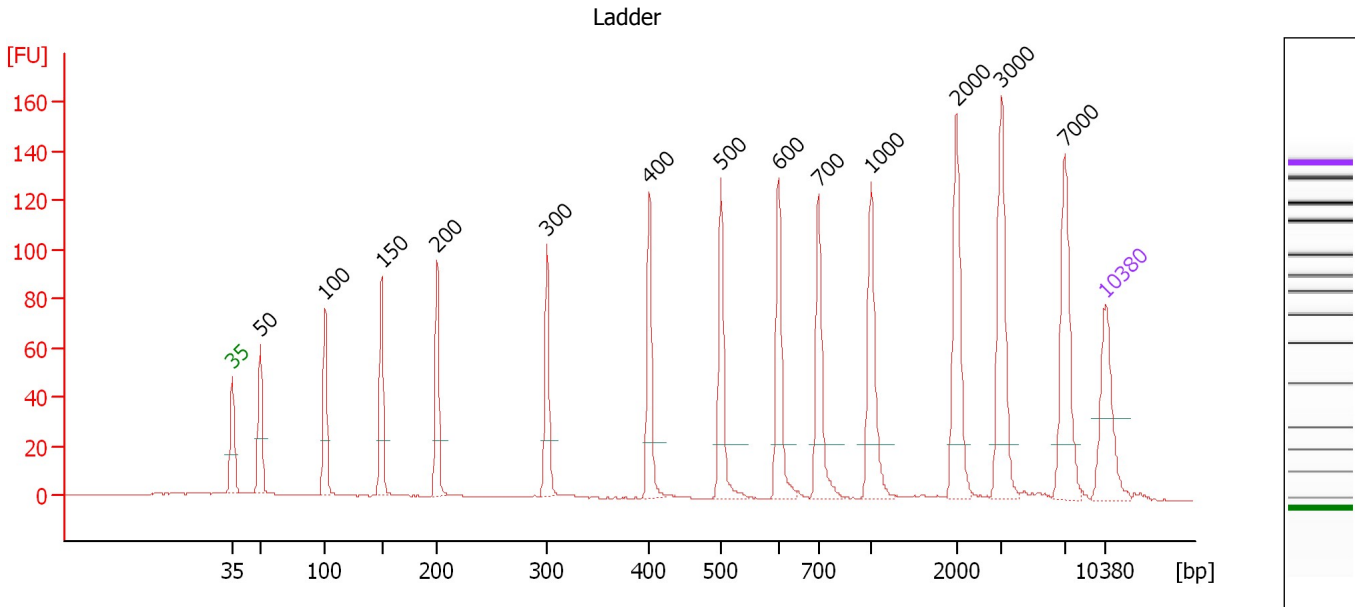
Ladder

Ladder Peak	Size	Area
1	35	160
2	50	210
3	100	208
4	150	221
5	200	242
6	300	270
7	400	305
8	500	306
9	600	336
10	700	321
11	1000	366
12	2000	413
13	3000	411
14	7000	400
15	10380	214

Assay Class: High Sensitivity DNA Assay
 Data Path: C:\...ents and Settings\Bioanalyzer\2013-11-07\2013-11-07_001.xad

Created: 11/7/2013 1:59:13 PM
 Modified: 11/7/2013 2:46:36 PM

Electropherogram Summary



Overall Results for Ladder

Noise: 0.1

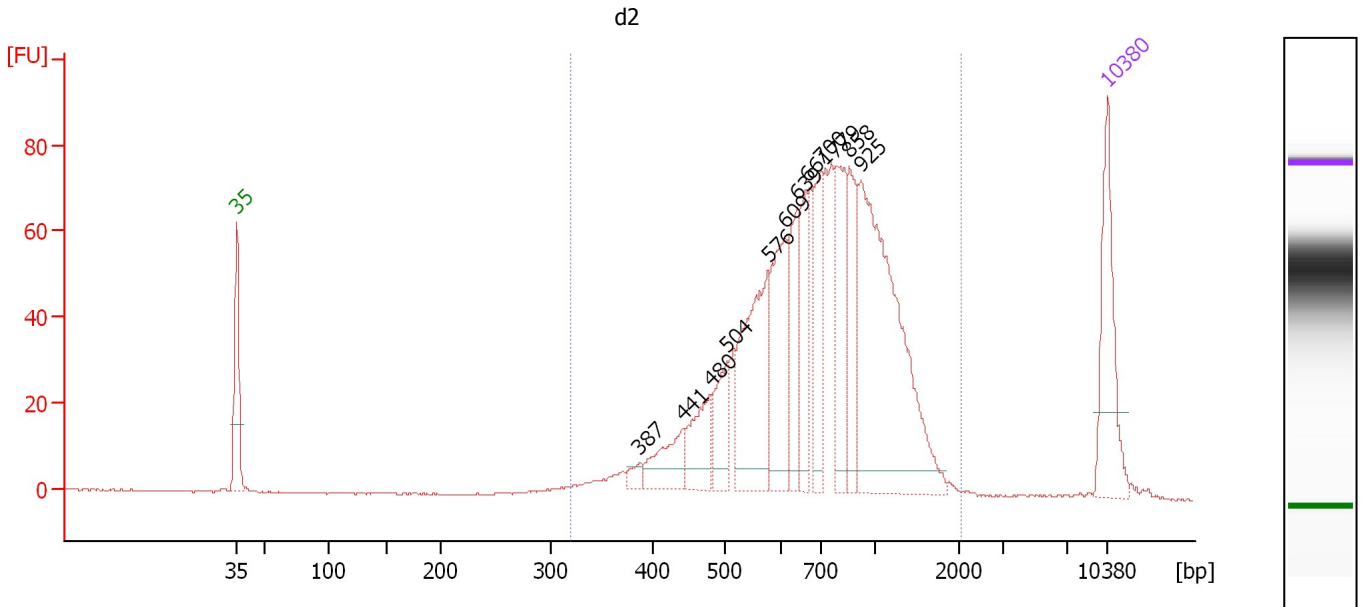
Peak table for Ladder

Peak	Aligned Migration Time [s]	Size [bp]	Conc. [pg/μl]	Molarity [pmol/l]	Observations
1	43.00	35	125.00	5,411.3	Lower Marker
2	45.22	50	150.00	4,545.5	Ladder Peak
3	50.44	100	150.00	2,272.7	Ladder Peak
4	54.97	150	150.00	1,515.2	Ladder Peak
5	59.42	200	150.00	1,136.4	Ladder Peak
6	68.23	300	150.00	757.6	Ladder Peak
7	76.44	400	150.00	568.2	Ladder Peak
8	82.21	500	150.00	454.5	Ladder Peak
9	86.79	600	150.00	378.8	Ladder Peak
10	89.99	700	150.00	324.7	Ladder Peak
11	94.23	1,000	150.00	227.3	Ladder Peak
12	101.07	2,000	150.00	113.6	Ladder Peak
13	104.66	3,000	150.00	75.8	Ladder Peak
14	109.75	7,000	150.00	32.5	Ladder Peak
15	113.00	10,380	75.00	10.9	Upper Marker

Assay Class: High Sensitivity DNA Assay
 Data Path: C:\...ents and Settings\Bioanalyzer\2013-11-07\2013-11-07_001.xad

Created: 11/7/2013 1:59:13 PM
 Modified: 11/7/2013 2:46:36 PM

Electropherogram Summary Continued ...



Overall Results for sample 1 : d2

Number of peaks found: 12 Corr. Area 1: 1,189.9
 Noise: 0.2

Peak table for sample 1 : d2

Peak	Aligned Migration Time [s]	Size [bp]	Conc. [pg/μl]	Molarity [pmol/l]	Observations
1	43.00	35	125.00	5,411.3	Lower Marker
2	75.39	387	10.52	41.2	
3	78.81	441	47.66	163.7	
4	81.08	480	56.03	176.7	
5	82.41	504	53.10	159.5	
6	85.71	576	147.27	387.1	
7	87.08	609	103.28	256.9	
8	88.02	639	69.98	166.0	
9	88.75	661	61.38	140.6	
10	90.00	700	69.64	150.7	
11	91.11	779	87.95	171.1	
12	92.22	858	71.30	125.9	
13	93.17	925	293.71	481.3	
14	113.00	10,380	75.00	10.9	Upper Marker

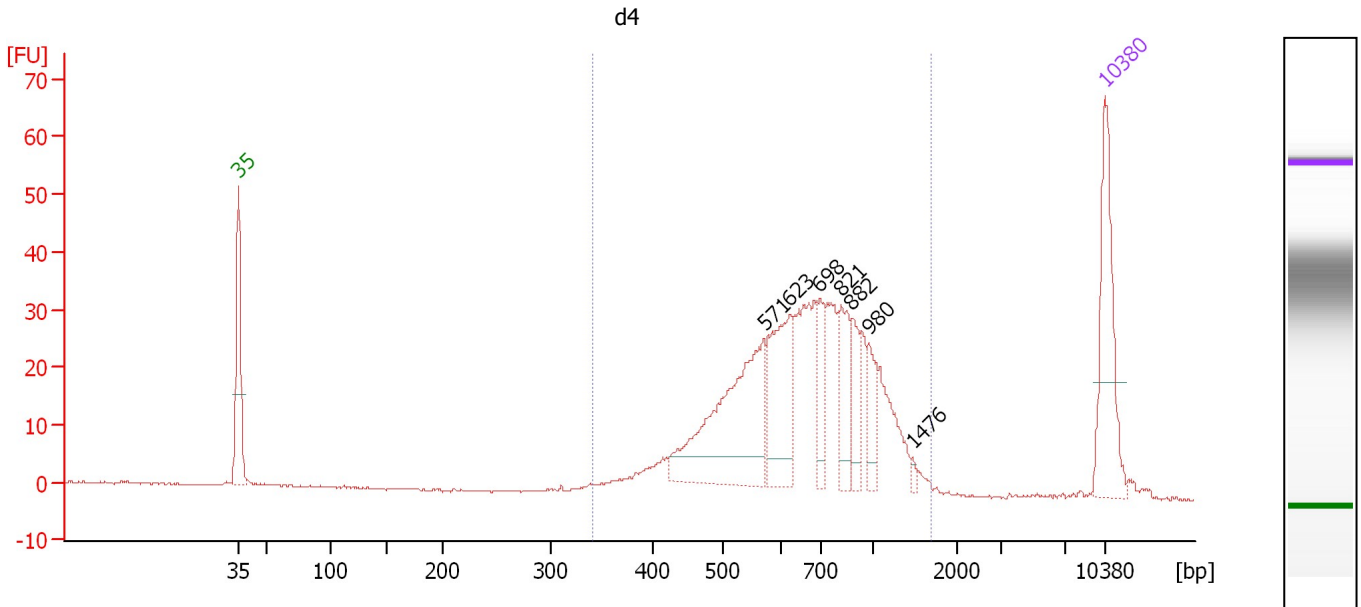
Region table for sample 1 : d2

From [bp]	To [bp]	Average Size [bp]	Molarity [pmol/l]	Conc. [pg/μl]	Corr. Area	% of Total	Size distribution in CV [%]	Color
320	2,045	778	2,846.9	1,254.83	1,189.9	99	37.2	Blue

Assay Class: High Sensitivity DNA Assay
 Data Path: C:\...ents and Settings\Bioanalyzer\2013-11-07\2013-11-07_001.xad

Created: 11/7/2013 1:59:13 PM
 Modified: 11/7/2013 2:46:36 PM

Electropherogram Summary Continued ...



Overall Results for sample 2 : d4

Number of peaks found: 7 Corr. Area 1: 521.4
 Noise: 0.2

Peak table for sample 2 : d4

Peak	Aligned Migration Time [s]	Size [bp]	Conc. [pg/μl]	Molarity [pmol/l]	Observations
1	43.00	35	125.00	5,411.3	Lower Marker
2	85.46	571	177.65	471.5	
3	87.53	623	92.11	224.0	
4	89.94	698	28.80	62.5	
5	91.71	821	45.26	83.5	
6	92.57	882	31.77	54.6	
7	93.95	980	25.96	40.1	
8	97.48	1,476	3.55	3.6	
9	113.00	10,380	75.00	10.9	Upper Marker

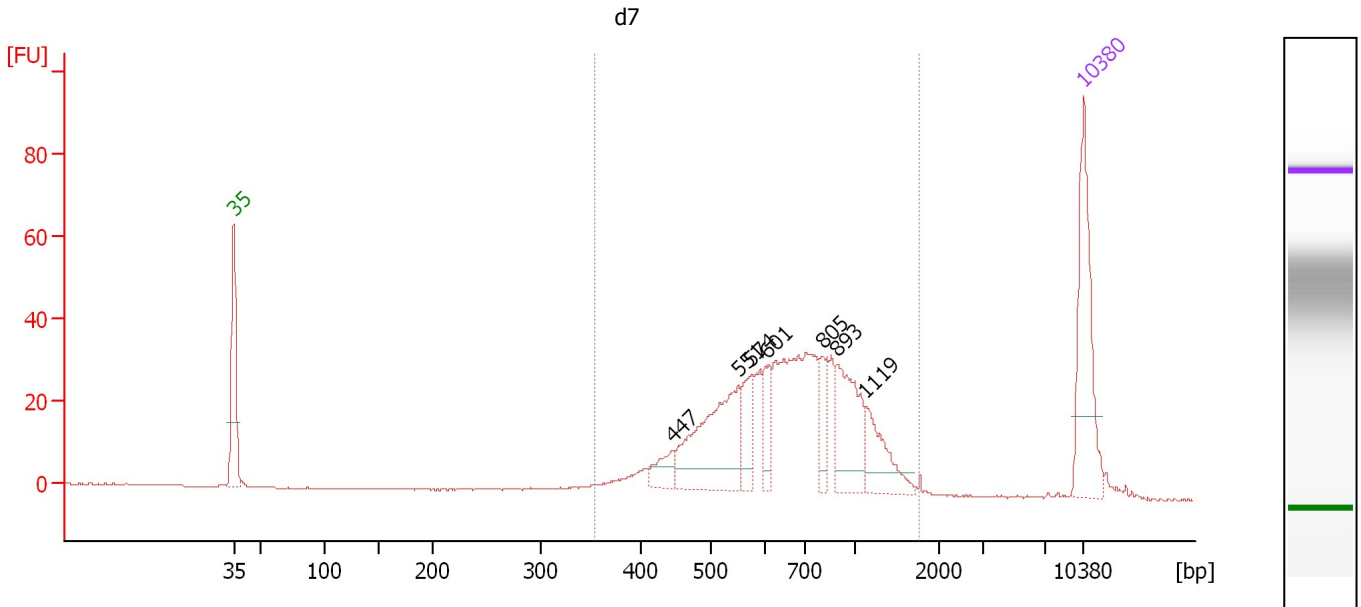
Region table for sample 2 : d4

From [bp]	To [bp]	Average Size [bp]	Molarity [pmol/l]	Conc. [pg/μl]	Corr. Area	% of Total	Size distribution in CV [%]	Color
342	1,683	722	1,686.4	711.30	521.4	98	33.3	Blue

Assay Class: High Sensitivity DNA Assay
 Data Path: C:\...ents and Settings\Bioanalyzer\2013-11-07\2013-11-07_001.xad

Created: 11/7/2013 1:59:13 PM
 Modified: 11/7/2013 2:46:36 PM

Electropherogram Summary Continued ...



Overall Results for sample 3 : d7

Number of peaks found: 7 Corr. Area 1: 562.3
 Noise: 0.1

Peak table for sample 3 : d7

Peak	Aligned Migration Time [s]	Size [bp]	Conc. [pg/μl]	Molarity [pmol/l]	Observations
1	43.00	35	125.00	5,411.3	Lower Marker
2	79.14	447	20.70	70.2	
3	84.54	551	114.94	316.1	
4	85.60	574	31.98	84.4	
5	86.83	601	21.03	53.0	
6	91.48	805	26.21	49.3	
7	92.71	893	64.38	109.3	
8	95.04	1,119	38.47	52.1	
9	113.00	10,380	75.00	10.9	Upper Marker

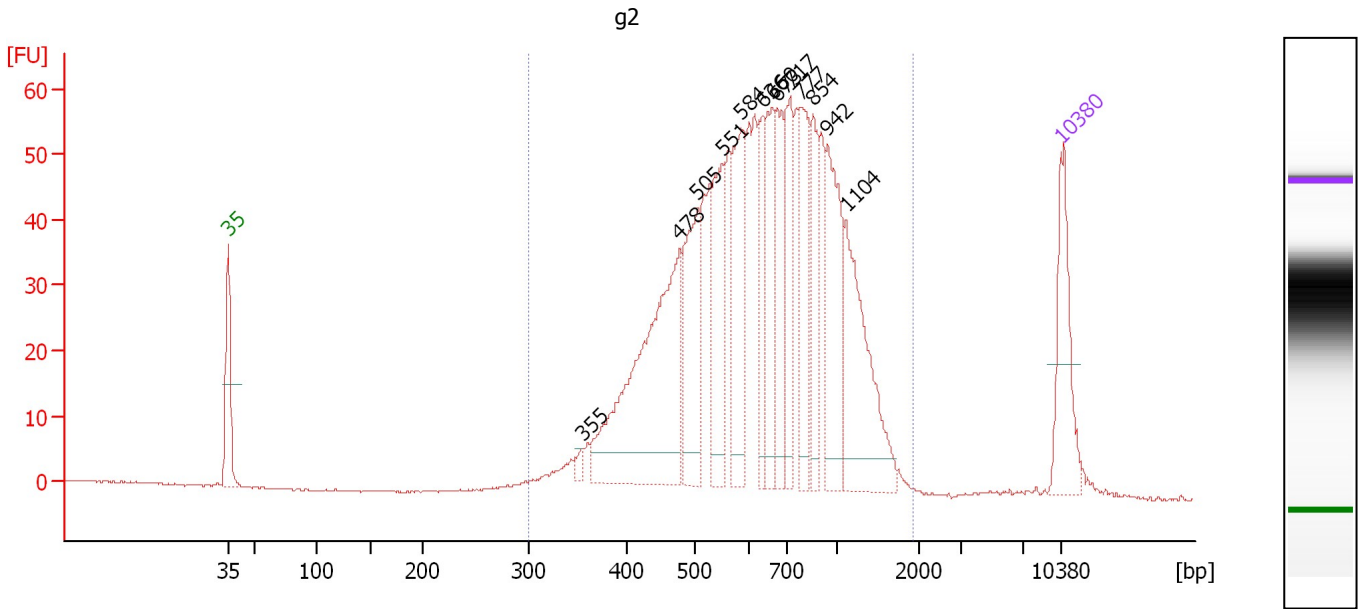
Region table for sample 3 : d7

From [bp]	To [bp]	Average Size [bp]	Molarity [pmol/l]	Conc. [pg/μl]	Corr. Area	% of Total	Size distribution in CV [%]	Color
355	1,769	725	1,332.3	559.93	562.3	96	35.0	Blue

Assay Class: High Sensitivity DNA Assay
 Data Path: C:\...ents and Settings\Bioanalyzer\2013-11-07\2013-11-07_001.xad

Created: 11/7/2013 1:59:13 PM
 Modified: 11/7/2013 2:46:36 PM

Electropherogram Summary Continued ...



Overall Results for sample 4 : g2

Number of peaks found: 13 Corr. Area 1: 1,147.1
 Noise: 0.2

Peak table for sample 4 : g2

Peak	Aligned Migration Time [s]	Size [bp]	Conc. [pg/μl]	Molarity [pmol/l]	Observations
1	43.00	35	125.00	5,411.3	Lower Marker
2	72.76	355	9.41	40.1	
3	80.96	478	336.60	1,066.3	
4	82.44	505	134.07	402.3	
5	84.54	551	103.39	284.3	
6	86.07	584	123.72	320.9	
7	87.95	636	64.33	153.2	
8	88.71	660	85.91	197.2	
9	89.11	673	86.01	193.8	
10	90.23	717	86.74	183.3	
11	91.09	777	102.06	198.9	
12	92.16	854	67.45	119.7	
13	93.42	942	127.63	205.2	
14	94.94	1,104	152.26	209.0	
15	113.00	10,380	75.00	10.9	Upper Marker

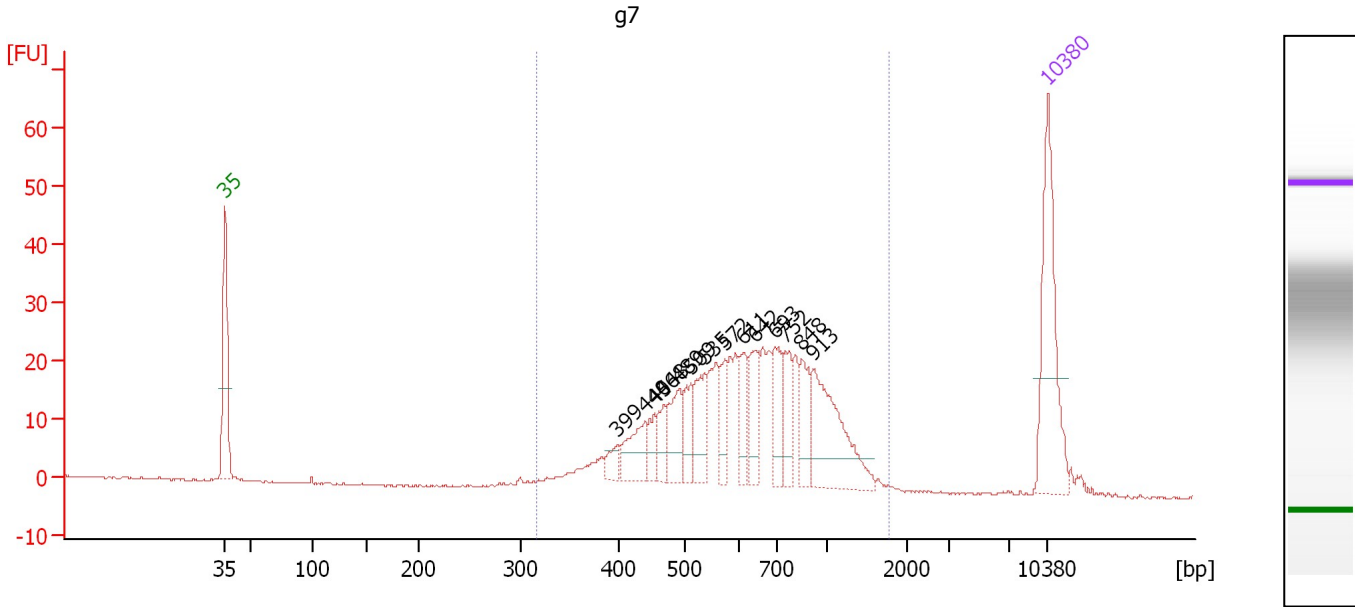
Region table for sample 4 : g2

From [bp]	To [bp]	Average Size [bp]	Molarity [pmol/l]	Conc. [pg/μl]	Corr. Area	% of Total	Size distribution in CV [%]	Color
301	1,934	703	4,978.7	1,976.72	1,147.1	99	38.3	Blue

Assay Class: High Sensitivity DNA Assay
 Data Path: C:\...ents and Settings\Bioanalyzer\2013-11-07\2013-11-07_001.xad

Created: 11/7/2013 1:59:13 PM
 Modified: 11/7/2013 2:46:36 PM

Electropherogram Summary Continued ...



Overall Results for sample 5 : g7

Number of peaks found: 14 Corr. Area 1: 456.9
 Noise: 0.2

Peak table for sample 5 : g7

Peak	Aligned Migration Time [s]	Size [bp]	Conc. [pg/μl]	Molarity [pmol/l]	Observations
1	43.00	35	125.00	5,411.3	Lower Marker
2	76.39	399	11.81	44.8	
3	78.75	440	32.86	113.1	
4	79.57	454	13.86	46.2	
5	80.34	468	16.75	54.3	
6	81.56	489	35.37	109.6	
7	82.60	509	22.62	67.4	
8	83.83	535	33.24	94.1	
9	85.51	572	20.45	54.2	
10	87.14	611	24.05	59.6	
11	88.14	642	33.78	79.7	
12	89.77	693	31.57	69.0	
13	90.73	752	26.84	54.1	
14	92.09	848	28.30	50.6	
15	92.99	913	78.68	130.6	
16	113.00	10,380	75.00	10.9	Upper Marker

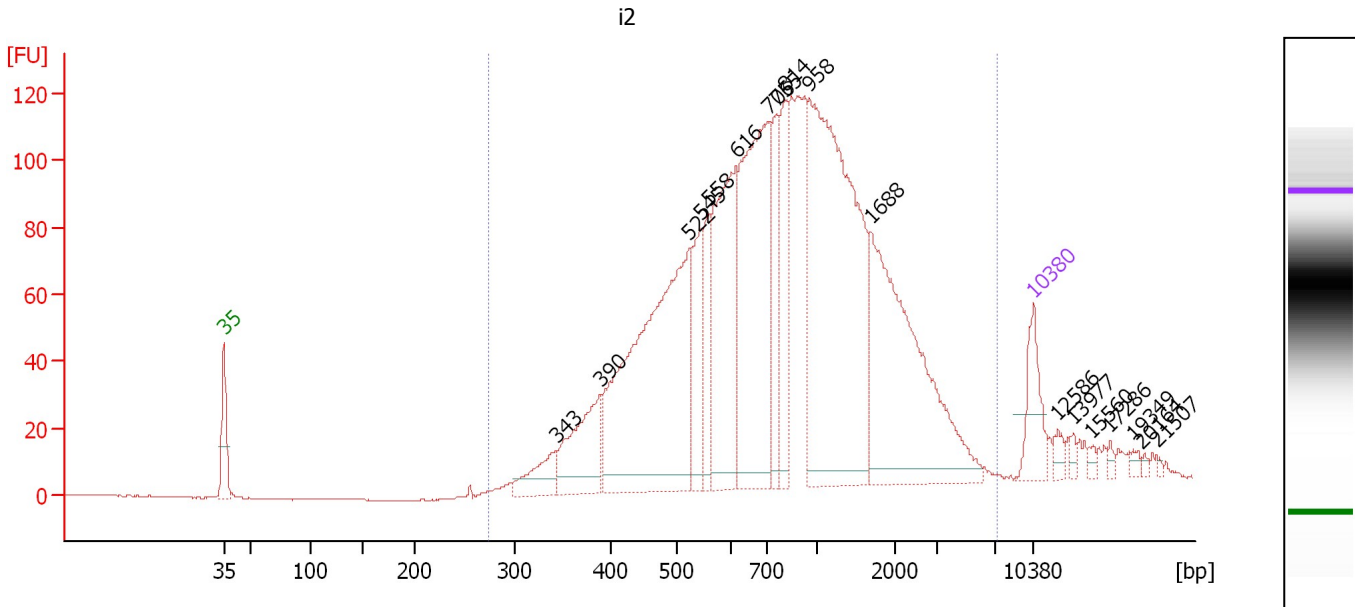
Region table for sample 5 : g7

From [bp]	To [bp]	Average Size [bp]	Molarity [pmol/l]	Conc. [pg/μl]	Corr. Area	% of Total	Size distribution in CV [%]	Color
316	1,765	679	1,546.4	602.42	456.9	97	36.2	Blue

Assay Class: High Sensitivity DNA Assay
 Data Path: C:\...ents and Settings\Bioanalyzer\2013-11-07\2013-11-07_001.xad

Created: 11/7/2013 1:59:13 PM
 Modified: 11/7/2013 2:46:36 PM

Electropherogram Summary Continued ...



Overall Results for sample 6 : i2

Number of peaks found: 18 Corr. Area 1: 2,591.7
 Noise: 0.2

Peak table for sample 6 : i2

Peak	Aligned Migration Time [s]	Size [bp]	Conc. [pg/μl]	Molarity [pmol/l]	Observations
1	43.00	35	125.00	5,411.3	Lower Marker
2	71.77	343	87.49	386.3	
3	75.60	390	192.11	746.7	
4	83.21	522	817.00	2,372.2	
5	84.27	545	154.95	430.8	
6	84.87	558	103.56	281.1	
7	87.31	616	388.01	953.7	
8	90.08	706	555.40	1,191.7	
9	90.77	755	130.05	260.9	
10	91.60	814	157.38	292.9	
11	93.63	958	846.31	1,338.8	
12	98.94	1,688	495.58	444.8	
13	113.00	10,380	75.00	10.9	Upper Marker
14	115.12	12,586	0.00	0.0	
15	116.46	13,977	0.00	0.0	
16	117.98	15,560	0.00	0.0	
17	119.64	17,286	0.00	0.0	
18	121.62	19,349	0.00	0.0	
19	122.41	20,164	0.00	0.0	
20	123.70	21,507	0.00	0.0	

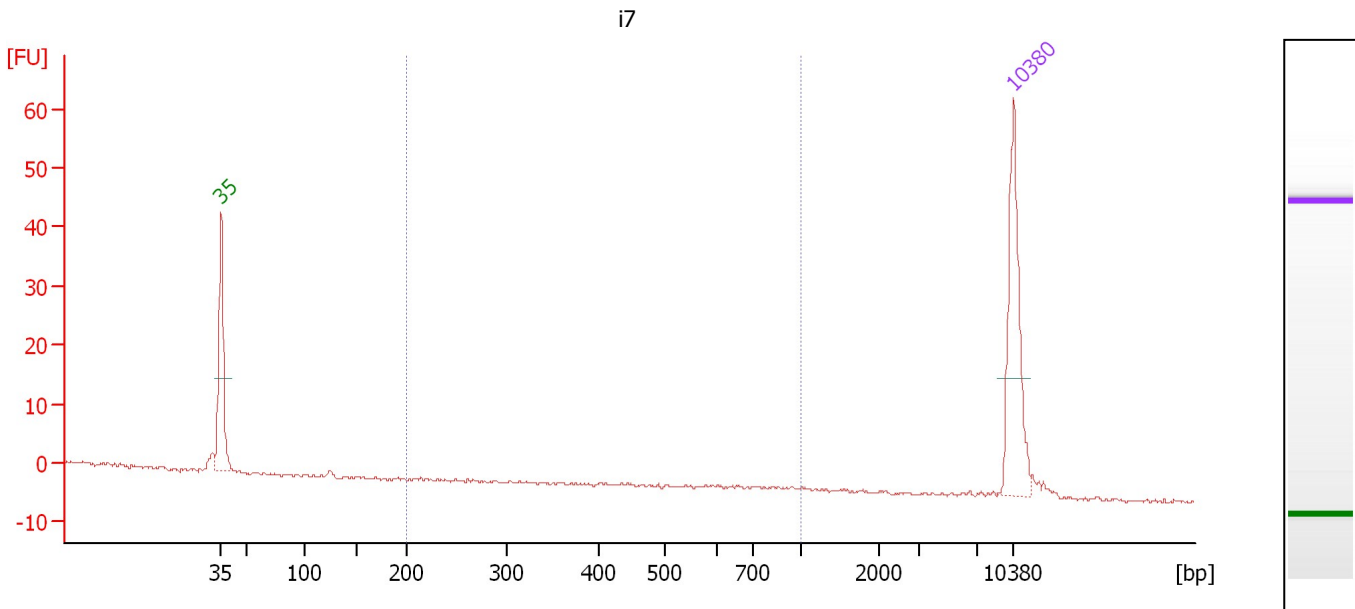
Region table for sample 6 : i2

From [bp]	To [bp]	Average Size [bp]	Molarity [pmol/l]	Conc. [pg/μl]	Corr. Area	% of Total	Size distribution in CV [%]	Color
274	7,100	1,042	9,067.4	4,136.85	2,591.7	97	74.2	Blue

Assay Class: High Sensitivity DNA Assay
 Data Path: C:\...ents and Settings\Bioanalyzer\2013-11-07\2013-11-07_001.xad

Created: 11/7/2013 1:59:13 PM
 Modified: 11/7/2013 2:46:36 PM

Electropherogram Summary Continued ...



Overall Results for sample 7 : i7

Number of peaks found: 0 Corr. Area 1: 0.2
 Noise: 0.3

Peak table for sample 7 : i7

Peak	Aligned Migration Time [s]	Size [bp]	Conc. [pg/μl]	Molarity [pmol/l]	Observations
1	43.00	35	125.00	5,411.3	Lower Marker
2	113.00	10,380	75.00	10.9	Upper Marker

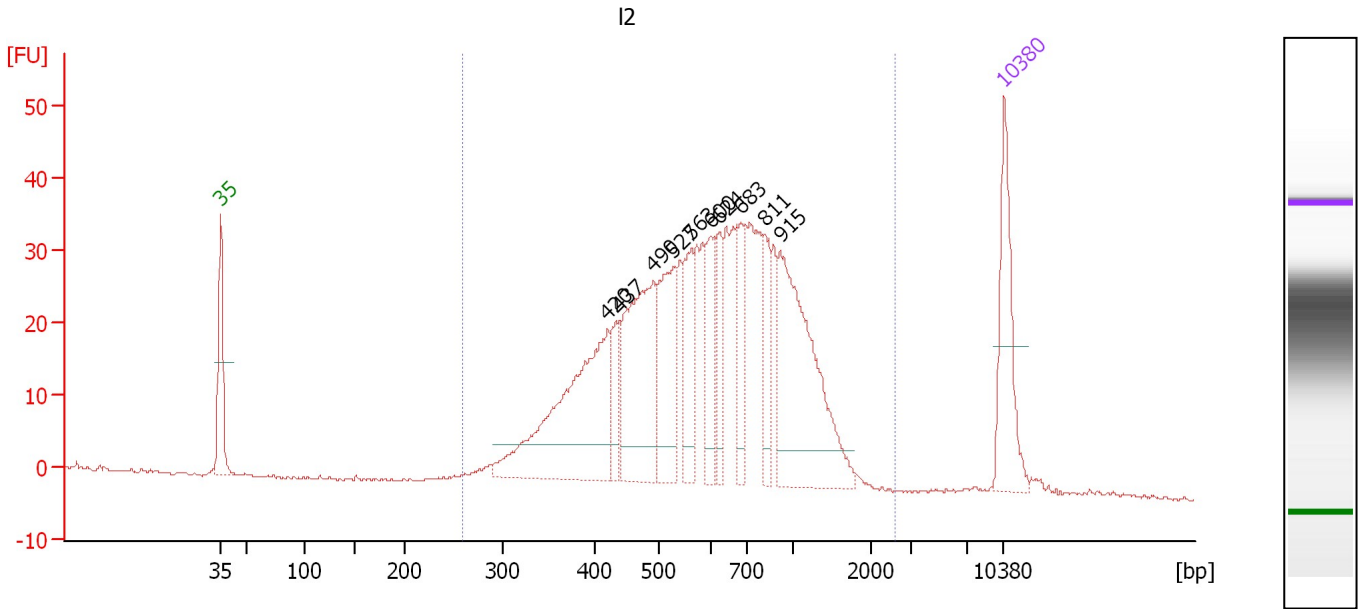
Region table for sample 7 : i7

From [bp]	To [bp]	Average Size [bp]	Molarity [pmol/l]	Conc. [pg/μl]	Corr. Area	% of Total	Size distribution in CV [%]	Color
200	1,000	798	0.5	0.26	0.2	2	15.6	Blue

Assay Class: High Sensitivity DNA Assay
 Data Path: C:\...ents and Settings\Bioanalyzer\2013-11-07\2013-11-07_001.xad

Created: 11/7/2013 1:59:13 PM
 Modified: 11/7/2013 2:46:36 PM

Electropherogram Summary Continued ...



Overall Results for sample 8 : I2

Number of peaks found: 10 Corr. Area 1: 801.5
 Noise: 0.2

Peak table for sample 8 : I2

Peak	Aligned Migration Time [s]	Size [bp]	Conc. [pg/μl]	Molarity [pmol/l]	Observations
1	43.00	35	125.00	5,411.3	Lower Marker
2	77.59	420	246.89	890.6	
3	78.55	437	38.56	133.8	
4	81.65	490	178.96	553.2	
5	83.46	527	105.46	303.1	
6	85.08	563	67.08	180.7	
7	86.79	600	52.70	133.0	
8	87.55	624	41.17	100.0	
9	89.46	683	49.85	110.5	
10	91.56	811	47.00	87.8	
11	93.03	915	206.18	341.3	
12	113.00	10,380	75.00	10.9	Upper Marker

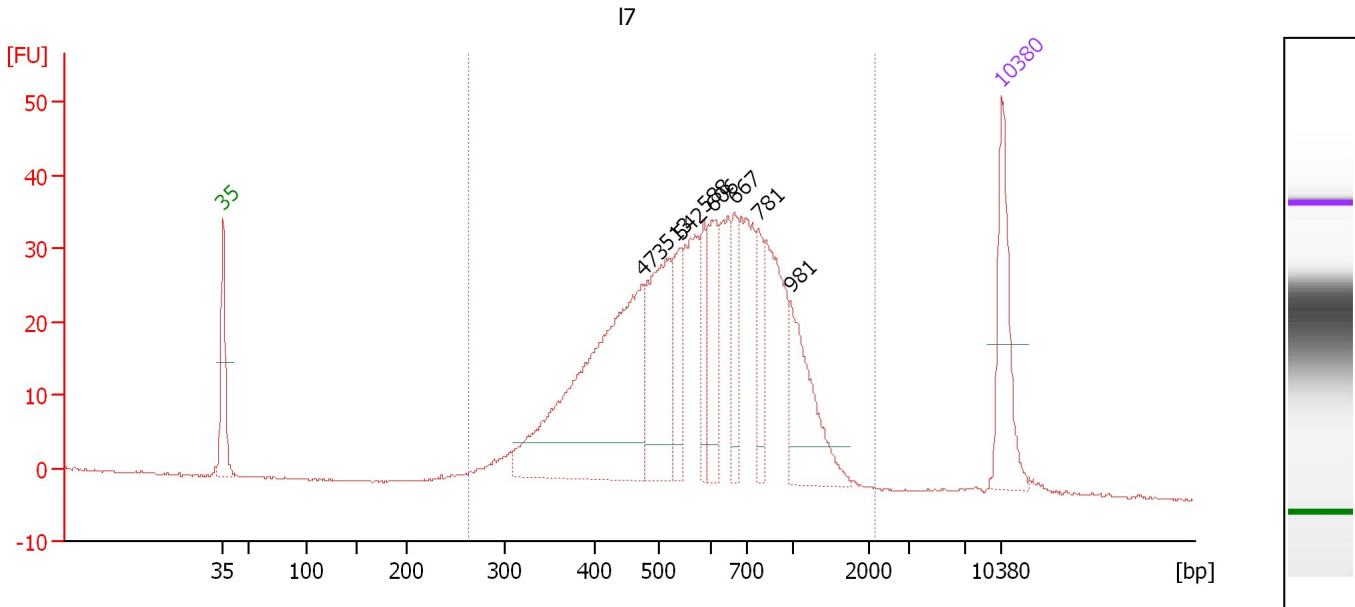
Region table for sample 8 : I2

From [bp]	To [bp]	Average Size [bp]	Molarity [pmol/l]	Conc. [pg/μl]	Corr. Area	% of Total	Size distribution in CV [%]	Color
259	2,606	668	3,908.7	1,423.00	801.5	99	42.7	Blue

Assay Class: High Sensitivity DNA Assay
 Data Path: C:\...ents and Settings\Bioanalyzer\2013-11-07\2013-11-07_001.xad

Created: 11/7/2013 1:59:13 PM
 Modified: 11/7/2013 2:46:36 PM

Electropherogram Summary Continued ...



Overall Results for sample 9 : I7

Number of peaks found: 8 Corr. Area 1: 783.0
 Noise: 0.1

Peak table for sample 9 : I7

Peak	Aligned Migration Time [s]	Size [bp]	Conc. [pg/μl]	Molarity [pmol/l]	Observations
1	43.00	35	125.00	5,411.3	Lower Marker
2	80.64	473	390.88	1,252.9	
3	82.79	513	153.74	454.3	
4	84.14	542	53.34	149.1	
5	86.25	588	42.18	108.6	
6	86.97	606	72.08	180.3	
7	88.93	667	44.06	100.1	
8	91.14	781	42.40	82.3	
9	93.97	981	96.65	149.2	
10	113.00	10,380	75.00	10.9	Upper Marker

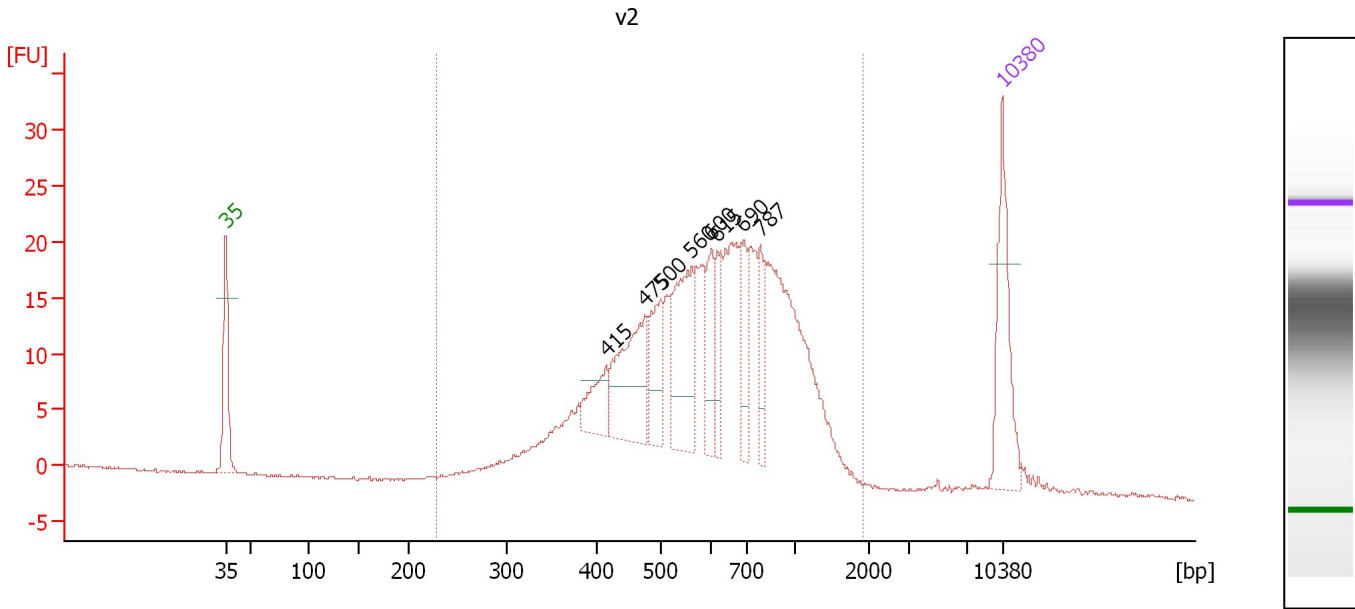
Region table for sample 9 : I7

From [bp]	To [bp]	Average Size [bp]	Molarity [pmol/l]	Conc. [pg/μl]	Corr. Area	% of Total	Size distribution in CV [%]	Color
264	2,171	638	3,929.8	1,403.84	783.0	99	39.1	Blue

Assay Class: High Sensitivity DNA Assay
 Data Path: C:\...ents and Settings\Bioanalyzer\2013-11-07\2013-11-07_001.xad

Created: 11/7/2013 1:59:13 PM
 Modified: 11/7/2013 2:46:36 PM

Electropherogram Summary Continued ...



Overall Results for sample 10 : v2

Number of peaks found: 8 Corr. Area 1: 444.8
 Noise: 0.1

Peak table for sample 10 : v2

Peak	Aligned Migration Time [s]	Size [bp]	Conc. [pg/μl]	Molarity [pmol/l]	Observations
1	43.00	35	125.00	5,411.3	Lower Marker
2	77.28	415	42.77	156.3	
3	80.74	475	113.05	361.0	
4	82.23	500	55.87	169.2	
5	84.97	560	105.13	284.3	
6	86.80	600	45.67	115.3	
7	87.28	615	35.78	88.1	
8	89.68	690	44.52	97.7	
9	91.22	787	35.67	68.7	
10	113.00	10,380	75.00	10.9	Upper Marker

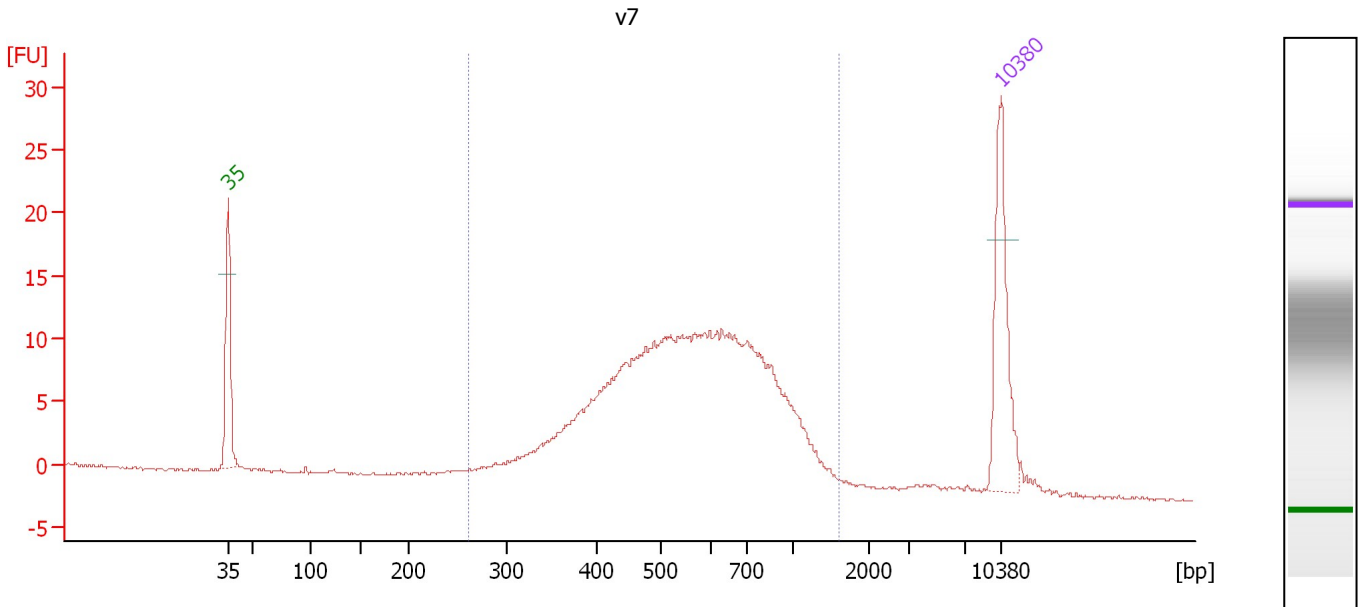
Region table for sample 10 : v2

From [bp]	To [bp]	Average Size [bp]	Molarity [pmol/l]	Conc. [pg/μl]	Corr. Area	% of Total	Size distribution in CV [%]	Color
230	1,913	666	3,546.1	1,302.45	444.8	98	40.4	Blue

Assay Class: High Sensitivity DNA Assay
 Data Path: C:\...ents and Settings\Bioanalyzer\2013-11-07\2013-11-07_001.xad

Created: 11/7/2013 1:59:13 PM
 Modified: 11/7/2013 2:46:36 PM

Electropherogram Summary Continued ...



Overall Results for sample 11 : v7

Number of peaks found: 0 Corr. Area 1: 263.5
 Noise: 0.1

Peak table for sample 11 : v7

Peak	Aligned Migration Time [s]	Size [bp]	Conc. [pg/μl]	Molarity [pmol/l]	Observations
1	43.00	35	125.00	5,411.3	Lower Marker
2	113.00	10,380	75.00	10.9	Upper Marker

Region table for sample 11 : v7

From [bp]	To [bp]	Average Size [bp]	Molarity [pmol/l]	Conc. [pg/μl]	Corr. Area	% of Total	Size distribution in CV [%]	Color
262	1,587	600	2,304.8	789.32	263.5	96	35.9	Blue

Assay Class: High Sensitivity DNA Assay
Data Path: C:\...ents and Settings\Bioanalyzer\2013-11-07\2013-11-07_001.xad

Created: 11/7/2013 1:59:13 PM
Modified: 11/7/2013 2:46:36 PM

Gel Image

