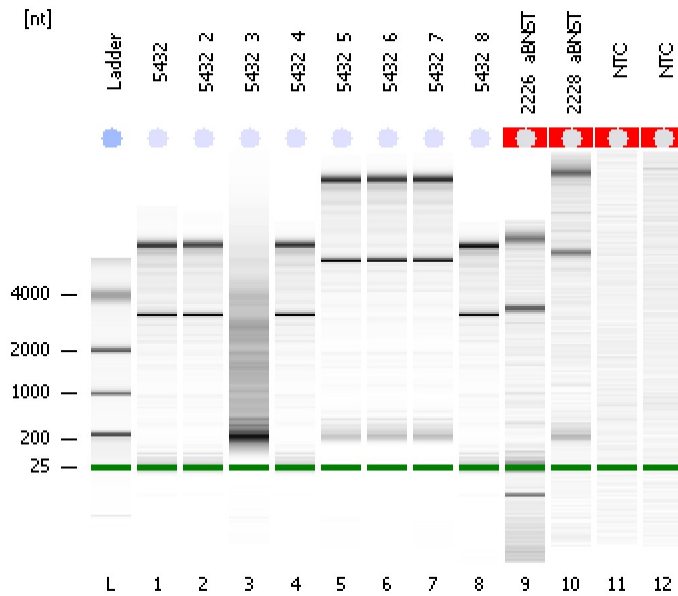


Assay Class: Eukaryote Total RNA Nano
Data Path: C:\...ents and Settings\Bioanalyzer\2013-11-12\2013-11-12_001.xad

Created: 11/12/2013 3:31:40 PM
Modified: 11/12/2013 3:55:36 PM

Electrophoresis File Run Summary



Instrument Information:

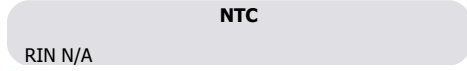
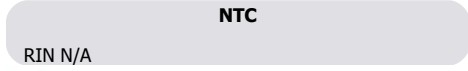
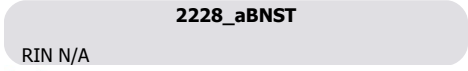
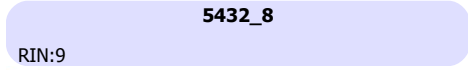
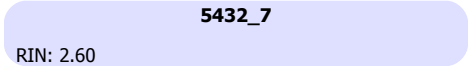
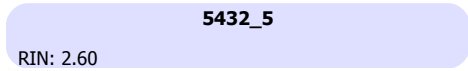
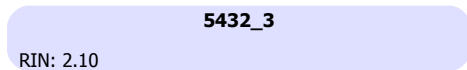
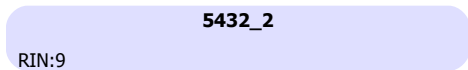
Instrument Name: DE13701086 Firmware: C.01.069
Serial#: DE13701086 Type: G2938B

Assay Information:

Assay Origin Path: C:\Program Files\Agilent\2100 bioanalyzer\2100 expert\assays\RNA\Eukaryote Total RNA Nano Series II.xsy
Assay Class: Eukaryote Total RNA Nano
Version: 2.6
Assay Comments: Total RNA Analysis ng sensitivity (Eukaryote)
© Copyright 2003 - 2009 Agilent Technologies, Inc.

Chip Information:

Chip Lot #:
Reagent Kit Lot #:
Chip Comments:



Assay Class: Eukaryote Total RNA Nano
 Data Path: C:\...ents and Settings\Bioanalyzer\2013-11-12\2013-11-12_001.xad

Created: 11/12/2013 3:31:40 PM
 Modified: 11/12/2013 3:55:36 PM

Electrophoresis File Run Summary (Chip Summary)

Sample Name	Sample Comment	Status	Result Label	Result Color
5432		✓	RIN: 8.70	
5432_2		✓	RIN:9	
5432_3		✓	RIN: 2.10	
5432_4		✓	RIN: 8.60	
5432_5		✓	RIN: 2.60	
5432_6		✓	RIN: 2.60	
5432_7		✓	RIN: 2.60	
5432_8		✓	RIN:9	
2226_aBNST		✓	RIN N/A	
2228_aBNST		✓	RIN N/A	
NTC		✓	RIN N/A	
NTC		✓	RIN N/A	
Ladder		✓	All Other Samples	

Chip Lot #

Reagent Kit Lot #

Chip Comments :

Assay Class: Eukaryote Total RNA Nano
Data Path: C:\...ents and Settings\Bioanalyzer\2013-11-12\2013-11-12_001.xad

Created: 11/12/2013 3:31:40 PM
Modified: 11/12/2013 3:55:36 PM

Electrophoresis Assay Details

General Analysis Settings

Number of Available Sample and Ladder Wells (Max.) : 13
Minimum Visible Range [s] : 17
Maximum Visible Range [s] : 70
Start Analysis Time Range [s] : 19
End Analysis Time Range [s] : 69
Ladder Concentration [ng/μl] : 150
Lower Marker Concentration [ng/μl] : 0
Upper Marker Concentration [ng/μl] : 0
Used Lower Marker for Quantitation
Standard Curve Fit is Logarithmic
Show Data Aligned to Lower Marker

Integrator Settings

Integration Start Time [s] : 19
Integration End Time [s] : 69
Slope Threshold : 0.6
Height Threshold [FU] : 0.5
Area Threshold : 0.2
Width Threshold [s] : 0.5
Baseline Plateau [s] : 6

Filter Settings

Filter Width [s] : 0.5
Polynomial Order : 4

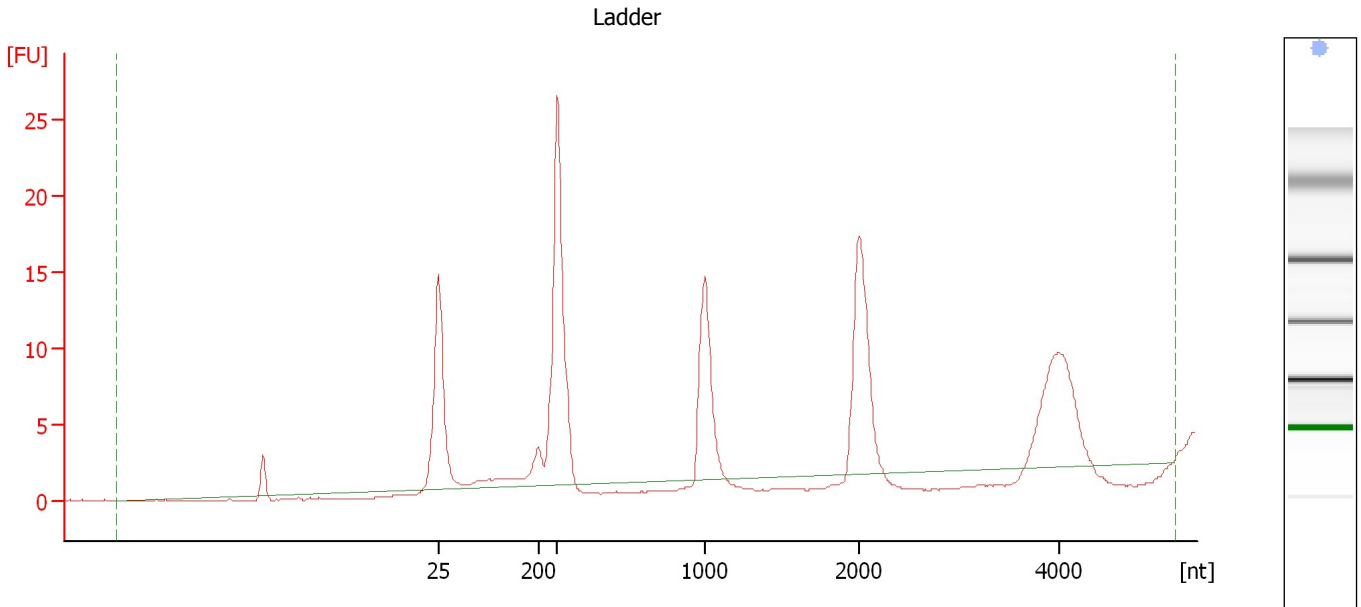
Ladder

Ladder Peak	Size
1	25
2	200
3	500
4	1000
5	2000
6	4000

Assay Class: Eukaryote Total RNA Nano
Data Path: C:\...ents and Settings\Bioanalyzer\2013-11-12\2013-11-12_001.xad

Created: 11/12/2013 3:31:40 PM
Modified: 11/12/2013 3:55:36 PM

Electropherogram Summary



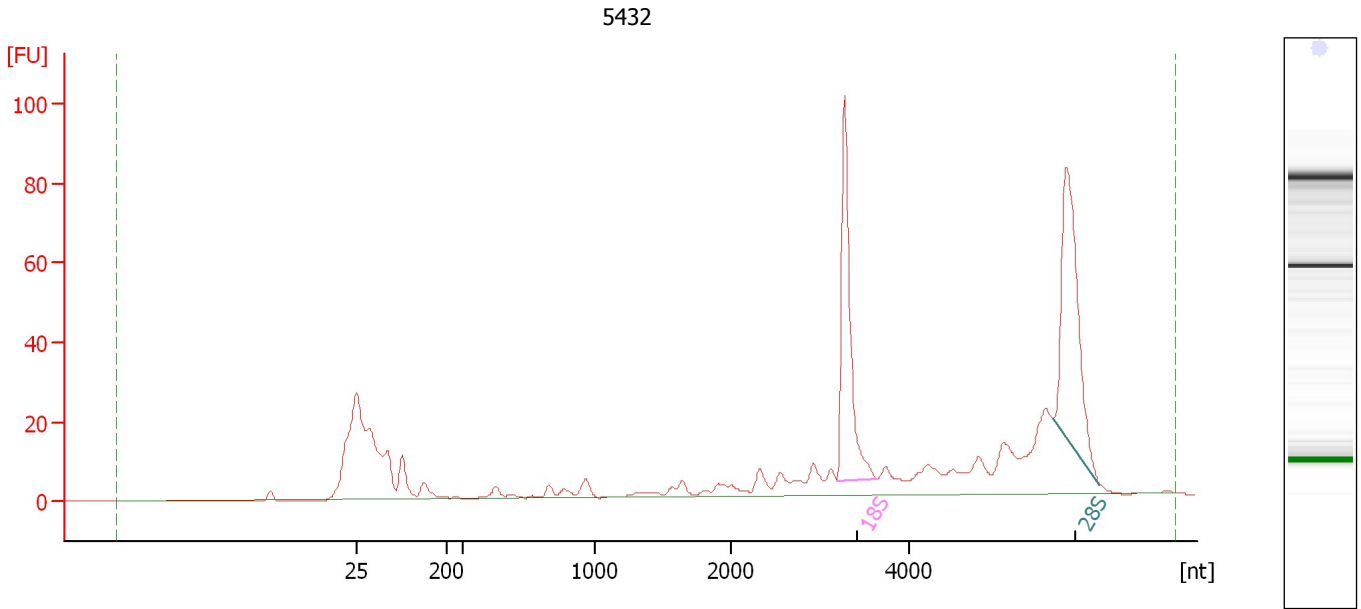
Overall Results for Ladder

RNA Area:	104.2	Result Flagging Color:	
RNA Concentration:	150 ng/ μ l	Result Flagging Label:	All Other Samples

Assay Class: Eukaryote Total RNA Nano
Data Path: C:\...ents and Settings\Bioanalyzer\2013-11-12\2013-11-12_001.xad

Created: 11/12/2013 3:31:40 PM
Modified: 11/12/2013 3:55:36 PM

Electropherogram Summary Continued ...



Overall Results for sample 1 : 5432

RNA Area:	430.0	RNA Integrity Number (RIN):	8.7 (B.02.08)
RNA Concentration:	619 ng/μl	Result Flagging Color:	
rRNA Ratio [28s / 18s]:	1.1	Result Flagging Label:	RIN: 8.70

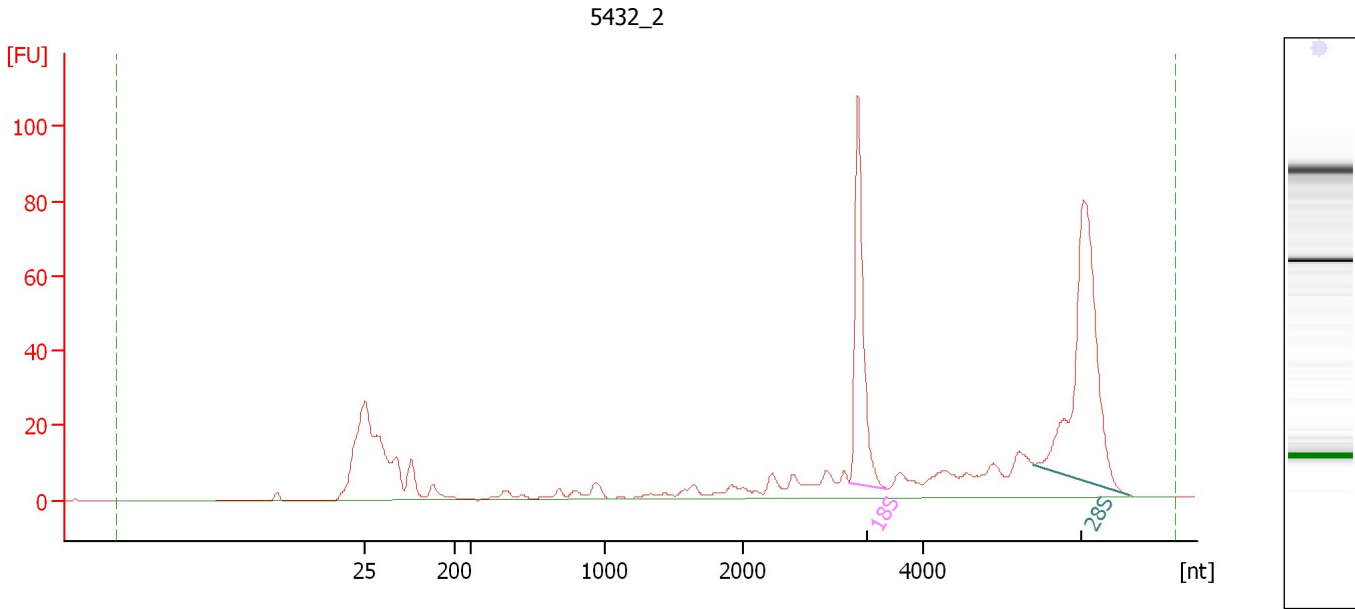
Fragment table for sample 1 : 5432

Name	Start Size [nt]	End Size [nt]	Area	% of total Area
18S	3,180	3,636	85.0	19.8
28S	5,631	6,148	92.5	21.5

Assay Class: Eukaryote Total RNA Nano
Data Path: C:\...ents and Settings\Bioanalyzer\2013-11-12\2013-11-12_001.xad

Created: 11/12/2013 3:31:40 PM
Modified: 11/12/2013 3:55:36 PM

Electropherogram Summary Continued ...



Overall Results for sample 2 : 5432_2

RNA Area: 440.3 RNA Integrity Number (RIN): 9 (B.02.08)
RNA Concentration: 634 ng/μl Result Flagging Color:
rRNA Ratio [28s / 18s]: 1.6 Result Flagging Label: RIN:9

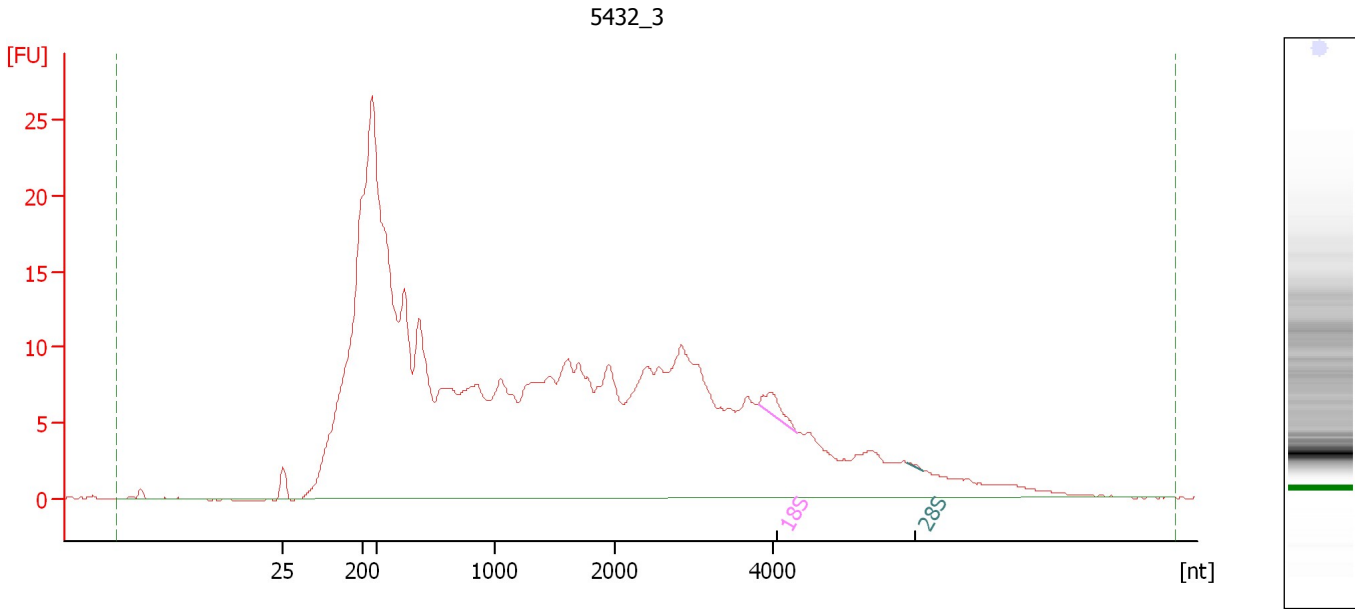
Fragment table for sample 2 : 5432_2

Name	Start Size [nt]	End Size [nt]	Area	% of total Area
18S	3,191	3,606	86.1	19.5
28S	5,234	6,292	137.9	31.3

Assay Class: Eukaryote Total RNA Nano
Data Path: C:\...ents and Settings\Bioanalyzer\2013-11-12\2013-11-12_001.xad

Created: 11/12/2013 3:31:40 PM
Modified: 11/12/2013 3:55:36 PM

Electropherogram Summary Continued ...



Overall Results for sample 3 : 5432_3

RNA Area:	547.3	RNA Integrity Number (RIN):	2.1 (B.02.08)
RNA Concentration:	788 ng/μl	Result Flagging Color:	
rRNA Ratio [28s / 18s]:	0.0	Result Flagging Label:	RIN: 2.10

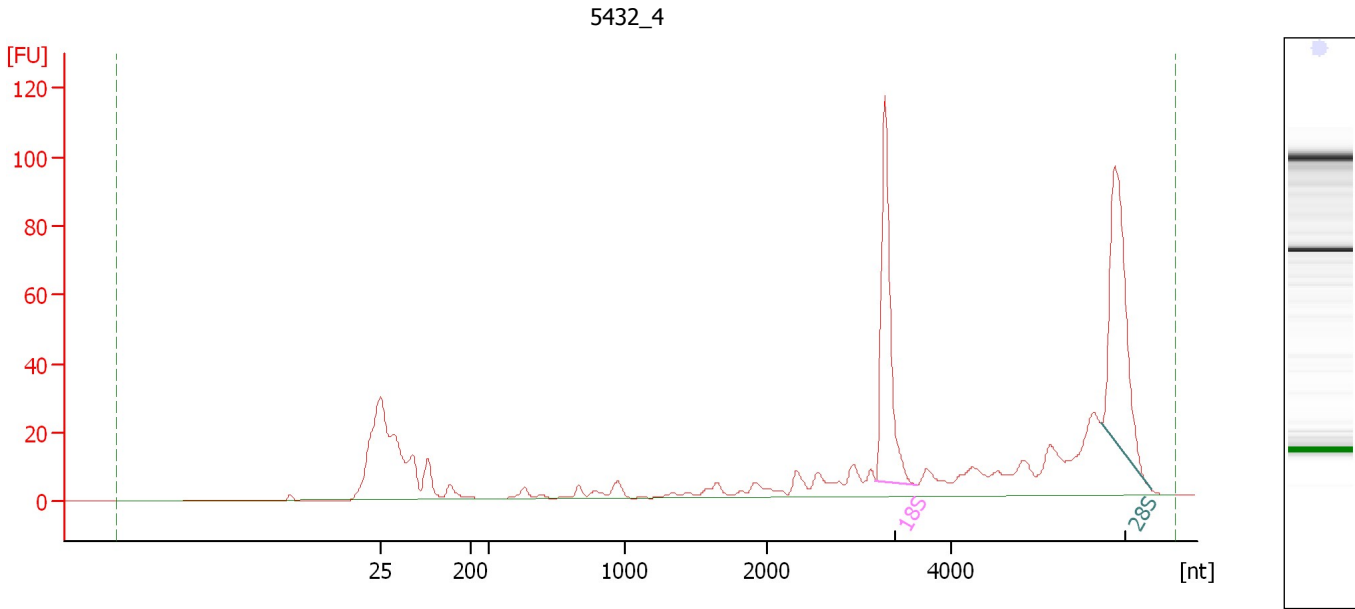
Fragment table for sample 3 : 5432_3

Name	Start Size [nt]	End Size [nt]	Area	% of total Area
18S	3,806	4,293	2.8	0.5
28S	5,701	5,904	0.1	0.0

Assay Class: Eukaryote Total RNA Nano
Data Path: C:\...ents and Settings\Bioanalyzer\2013-11-12\2013-11-12_001.xad

Created: 11/12/2013 3:31:40 PM
Modified: 11/12/2013 3:55:36 PM

Electropherogram Summary Continued ...



Overall Results for sample 4 : 5432_4

RNA Area:	515.0	RNA Integrity Number (RIN):	8.6 (B.02.08)
RNA Concentration:	742 ng/μl	Result Flagging Color:	
rRNA Ratio [28s / 18s]:	1.1	Result Flagging Label:	RIN: 8.60

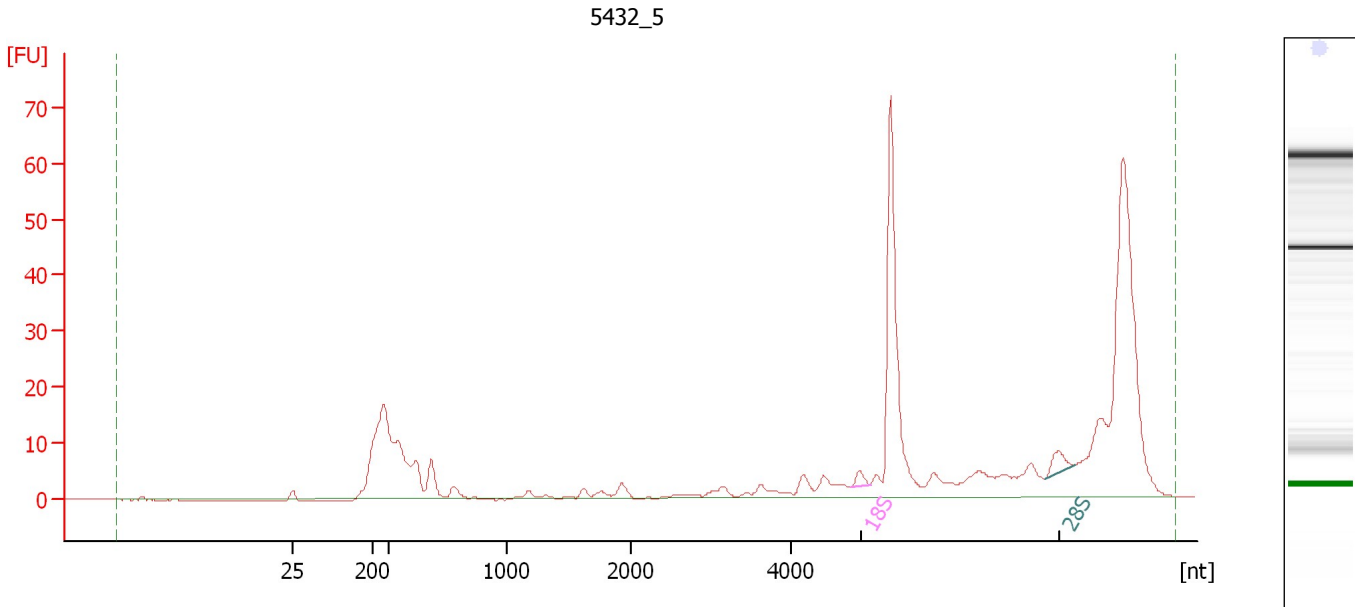
Fragment table for sample 4 : 5432_4

Name	Start Size [nt]	End Size [nt]	Area	% of total Area
18S	3,188	3,630	97.0	18.8
28S	5,640	6,174	104.3	20.2

Assay Class: Eukaryote Total RNA Nano
Data Path: C:\...ents and Settings\Bioanalyzer\2013-11-12\2013-11-12_001.xad

Created: 11/12/2013 3:31:40 PM
Modified: 11/12/2013 3:55:36 PM

Electropherogram Summary Continued ...



Overall Results for sample 5 : 5432_5

RNA Area:	353.4	RNA Integrity Number (RIN):	2.6 (B.02.08)
RNA Concentration:	509 ng/μl	Result Flagging Color:	
rRNA Ratio [28s / 18s]:	2.0	Result Flagging Label:	RIN: 2.60

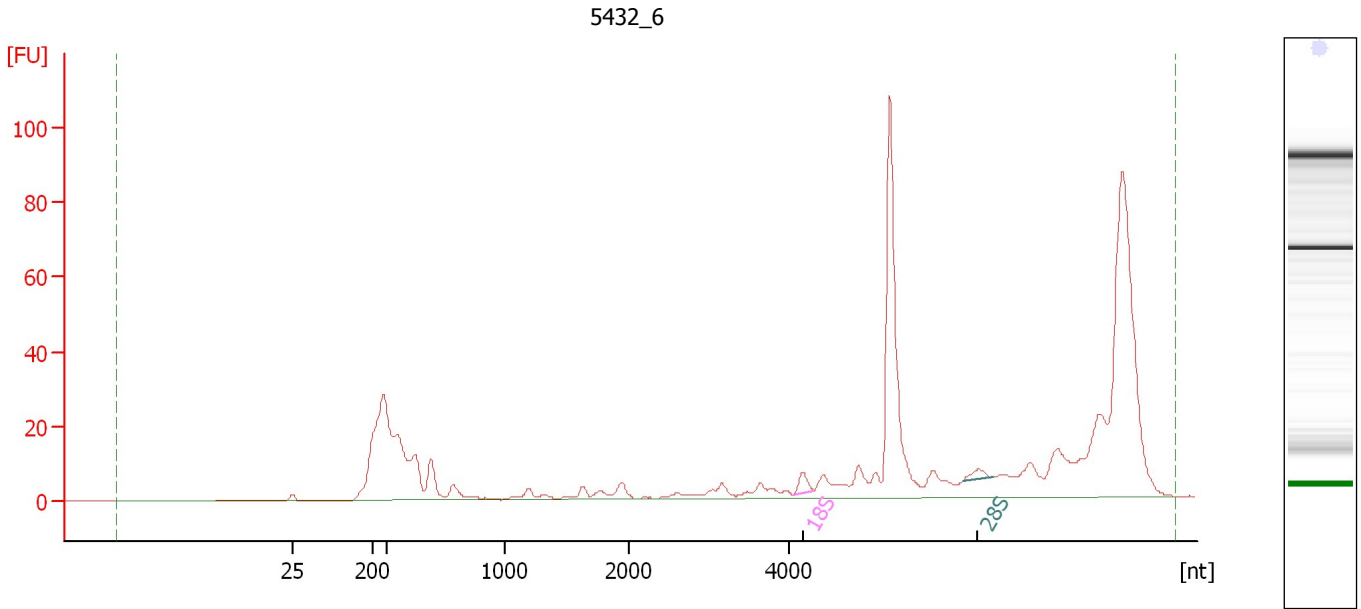
Fragment table for sample 5 : 5432_5

Name	Start Size [nt]	End Size [nt]	Area	% of total Area
18S	4,747	4,987	2.1	0.6
28S	7,157	7,530	4.1	1.2

Assay Class: Eukaryote Total RNA Nano
Data Path: C:\...ents and Settings\Bioanalyzer\2013-11-12\2013-11-12_001.xad

Created: 11/12/2013 3:31:40 PM
Modified: 11/12/2013 3:55:36 PM

Electropherogram Summary Continued ...



Overall Results for sample 6 : 5432_6

RNA Area: 568.9 RNA Integrity Number (RIN): 2.6 (B.02.08)
RNA Concentration: 819 ng/μl Result Flagging Color:
rRNA Ratio [28s / 18s]: 0.7 Result Flagging Label: RIN: 2.60

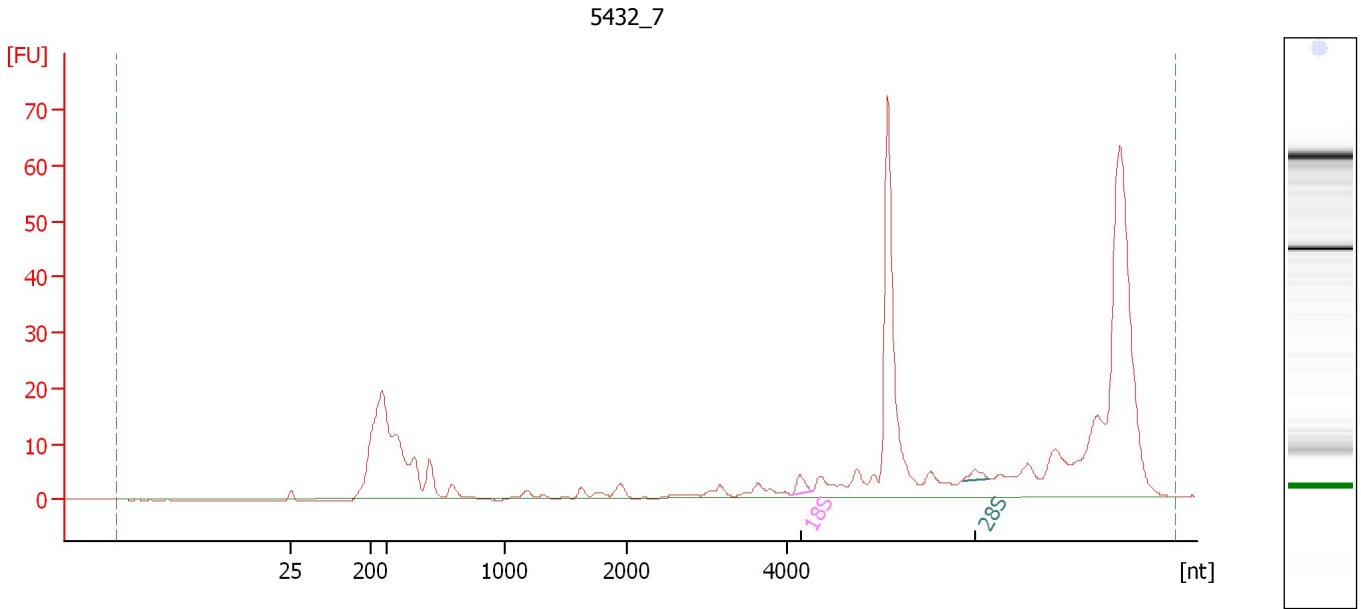
Fragment table for sample 6 : 5432_6

Name	Start Size [nt]	End Size [nt]	Area	% of total Area
18S	4,053	4,306	4.6	0.8
28S	6,174	6,547	3.3	0.6

Assay Class: Eukaryote Total RNA Nano
Data Path: C:\...ents and Settings\Bioanalyzer\2013-11-12\2013-11-12_001.xad

Created: 11/12/2013 3:31:40 PM
Modified: 11/12/2013 3:55:36 PM

Electropherogram Summary Continued ...



Overall Results for sample 7 : 5432_7

RNA Area:	373.2	RNA Integrity Number (RIN):	2.6 (B.02.08)
RNA Concentration:	537 ng/μl	Result Flagging Color:	
rRNA Ratio [28s / 18s]:	0.6	Result Flagging Label:	RIN: 2.60

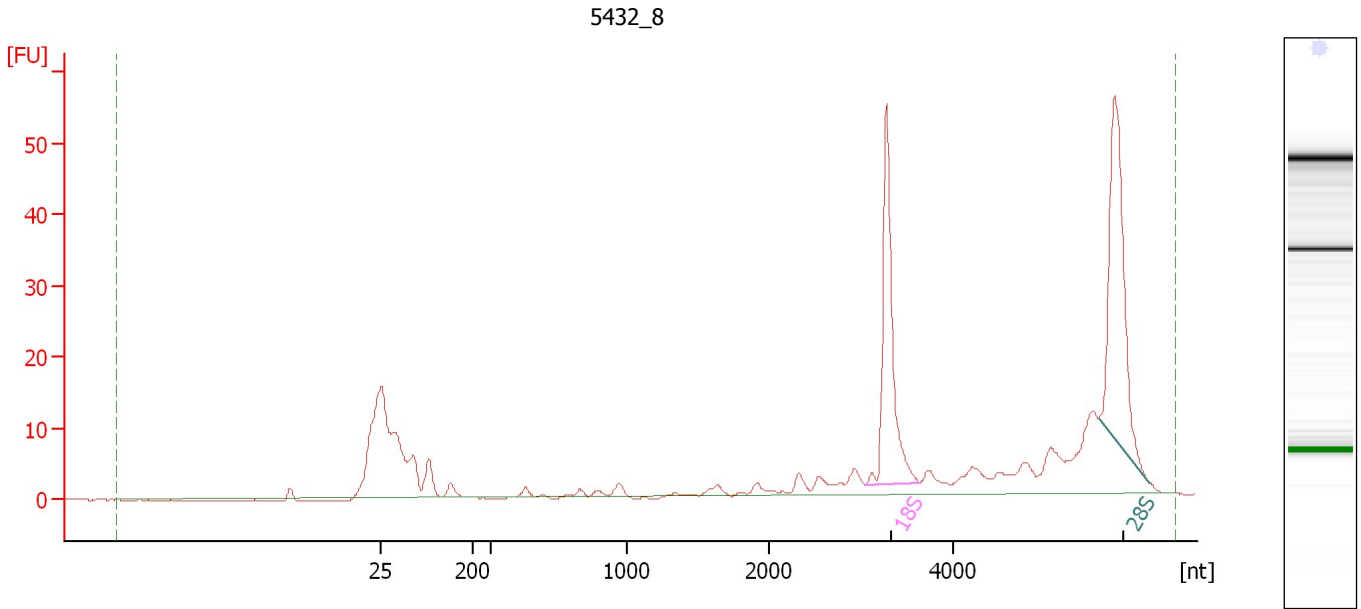
Fragment table for sample 7 : 5432_7

Name	Start Size [nt]	End Size [nt]	Area	% of total Area
18S	4,051	4,318	2.9	0.8
28S	6,189	6,523	1.9	0.5

Assay Class: Eukaryote Total RNA Nano
Data Path: C:\...ents and Settings\Bioanalyzer\2013-11-12\2013-11-12_001.xad

Created: 11/12/2013 3:31:40 PM
Modified: 11/12/2013 3:55:36 PM

Electropherogram Summary Continued ...



Overall Results for sample 8 : 5432_8

RNA Area:	237.5	RNA Integrity Number (RIN):	9 (B.02.08)
RNA Concentration:	342 ng/μl	Result Flagging Color:	
rRNA Ratio [28s / 18s]:	1.1	Result Flagging Label:	RIN:9

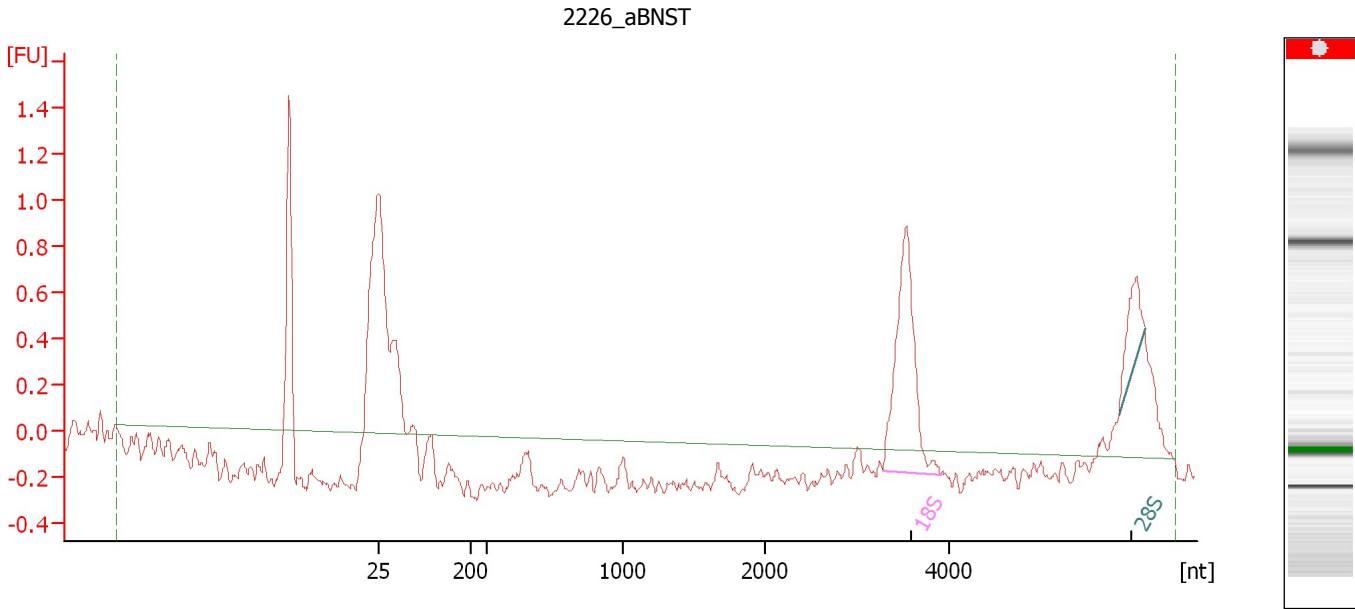
Fragment table for sample 8 : 5432_8

Name	Start Size [nt]	End Size [nt]	Area	% of total Area
18S	3,052	3,644	49.3	20.8
28S	5,593	6,138	56.1	23.6

Assay Class: Eukaryote Total RNA Nano
Data Path: C:\...ents and Settings\Bioanalyzer\2013-11-12\2013-11-12_001.xad

Created: 11/12/2013 3:31:40 PM
Modified: 11/12/2013 3:55:36 PM

Electropherogram Summary Continued ...



Overall Results for sample 9 : 2226_aBNST

RNA Area:	5.1	RNA Integrity Number (RIN):	N/A (B.02.08)
RNA Concentration:	7 ng/μl	Result Flagging Color:	
rRNA Ratio [28s / 18s]:	0.2	Result Flagging Label:	RIN N/A

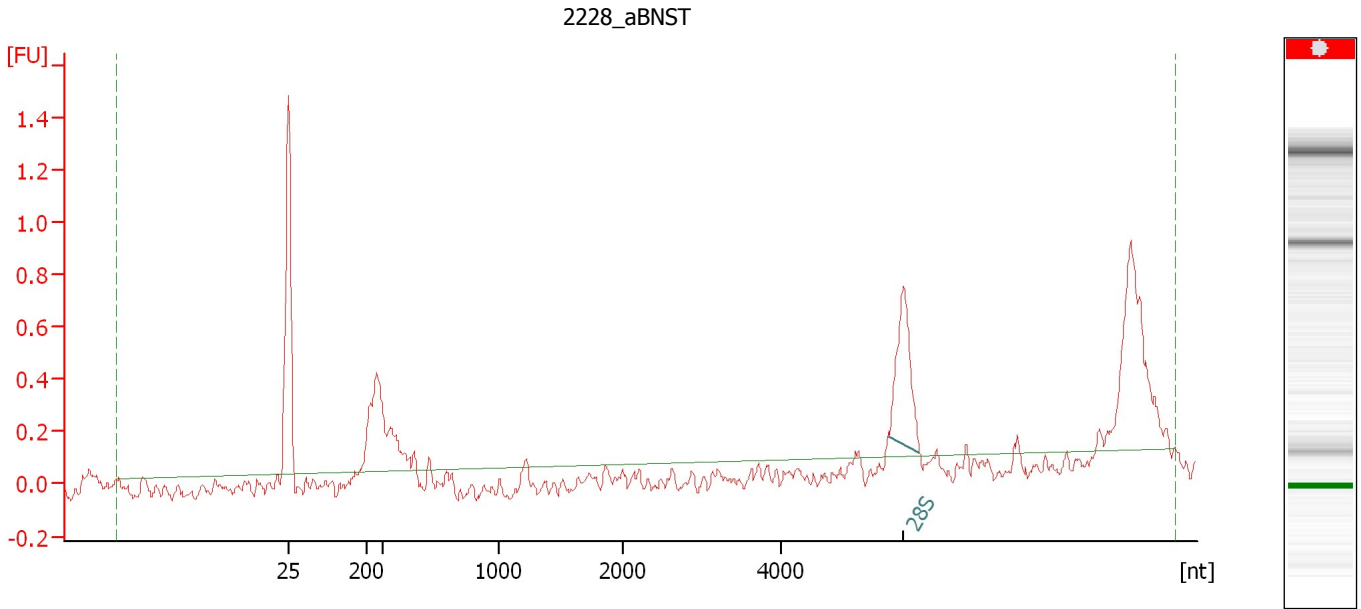
Fragment table for sample 9 : 2226_aBNST

Name	Start Size [nt]	End Size [nt]	Area	% of total Area
18S	3,278	3,918	1.8	36.2
28S	5,850	6,141	0.4	7.9

Assay Class: Eukaryote Total RNA Nano
Data Path: C:\...ents and Settings\Bioanalyzer\2013-11-12\2013-11-12_001.xad

Created: 11/12/2013 3:31:40 PM
Modified: 11/12/2013 3:55:36 PM

Electropherogram Summary Continued ...



Overall Results for sample 10 : 2228_aBNST

RNA Area:	3.6	RNA Integrity Number (RIN):	N/A (B.02.08)
RNA Concentration:	5 ng/μl	Result Flagging Color:	
rRNA Ratio [28s / 18s]:	0.0	Result Flagging Label:	RIN N/A

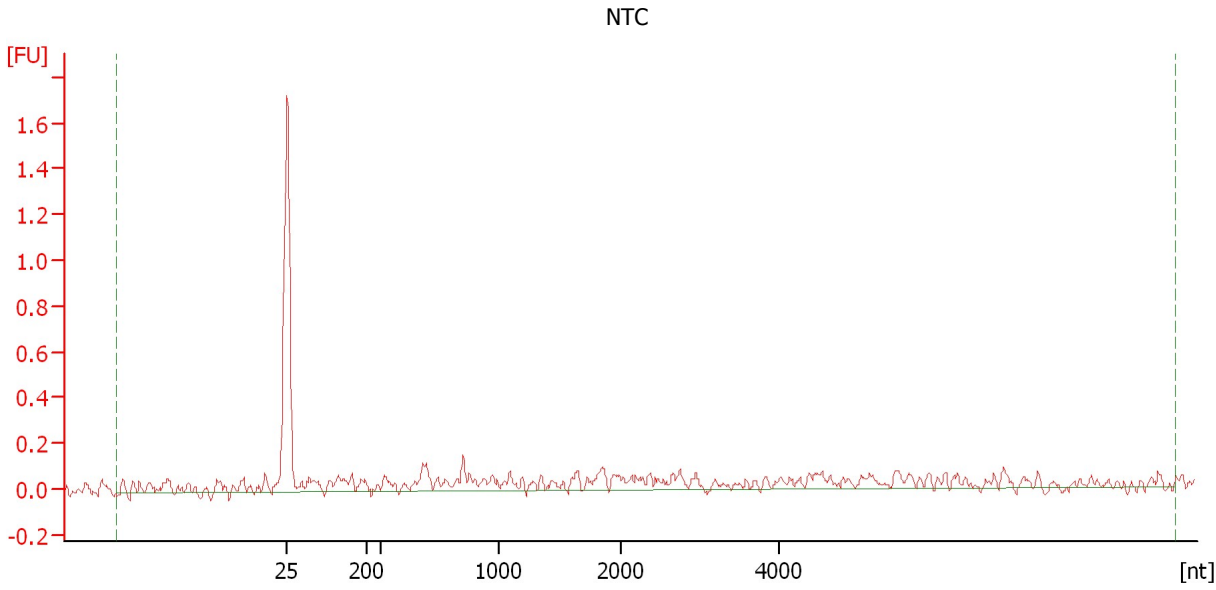
Fragment table for sample 10 : 2228_aBNST

Name	Start Size [nt]	End Size [nt]	Area	% of total Area
28S	5,361	5,738	0.8	21.4

Assay Class: Eukaryote Total RNA Nano
Data Path: C:\...ents and Settings\Bioanalyzer\2013-11-12\2013-11-12_001.xad

Created: 11/12/2013 3:31:40 PM
Modified: 11/12/2013 3:55:36 PM

Electropherogram Summary Continued ...



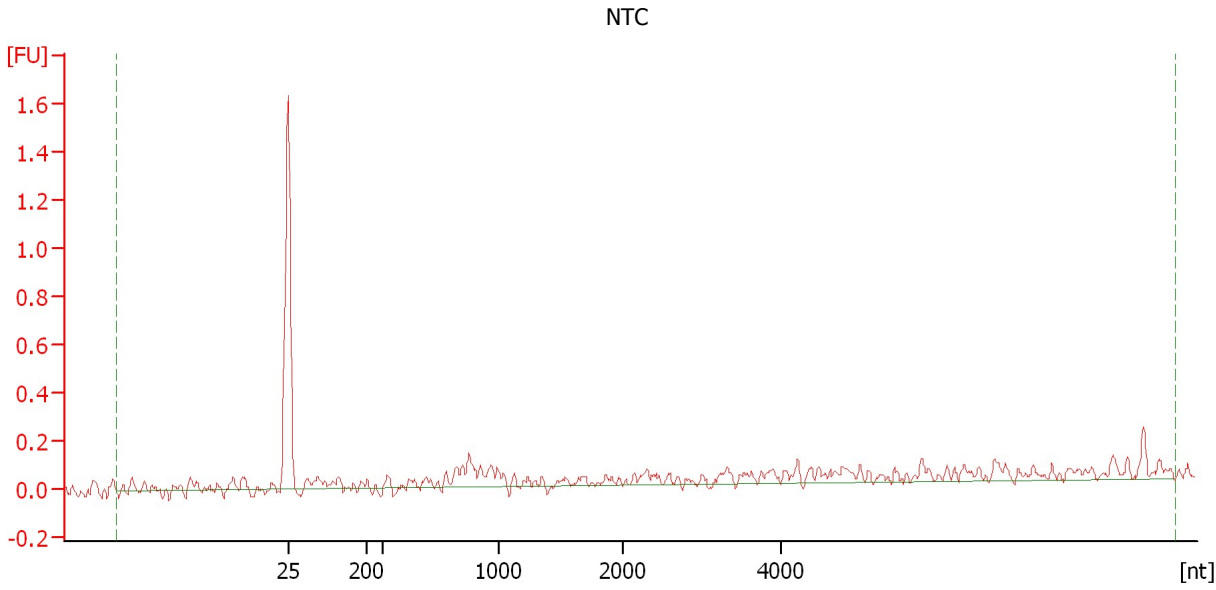
Overall Results for sample 11 : NTC

RNA Area:	3.8	RNA Integrity Number (RIN):	N/A (B.02.08)
RNA Concentration:	6 ng/μl	Result Flagging Color:	
rRNA Ratio [28s / 18s]:	0.0	Result Flagging Label:	RIN N/A

Assay Class: Eukaryote Total RNA Nano
Data Path: C:\...ents and Settings\Bioanalyzer\2013-11-12\2013-11-12_001.xad

Created: 11/12/2013 3:31:40 PM
Modified: 11/12/2013 3:55:36 PM

Electropherogram Summary Continued ...



Overall Results for sample 12 : NTC

RNA Area:	2.9	RNA Integrity Number (RIN):	N/A (B.02.08)
RNA Concentration:	4 ng/μl	Result Flagging Color:	
rRNA Ratio [28s / 18s]:	0.0	Result Flagging Label:	RIN N/A

Assay Class: Eukaryote Total RNA Nano
Data Path: C:\...ents and Settings\Bioanalyzer\2013-11-12\2013-11-12_001.xad

Created: 11/12/2013 3:31:40 PM
Modified: 11/12/2013 3:55:36 PM

Gel Image

