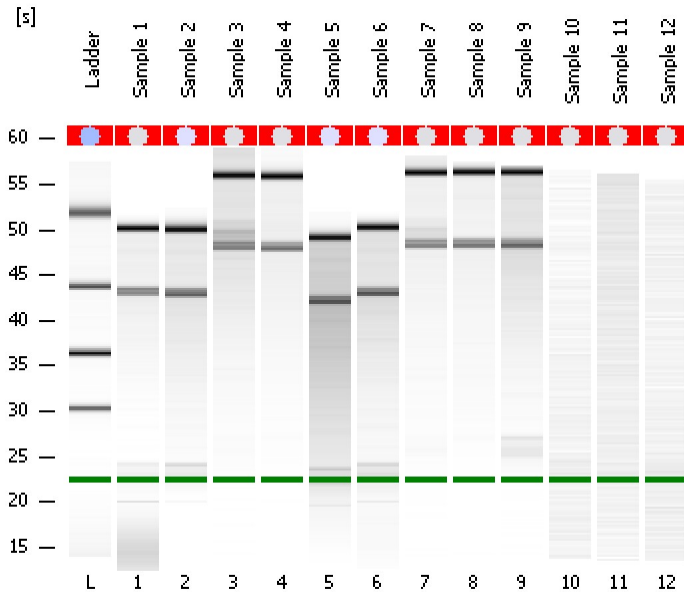


Assay Class: Eukaryote Total RNA Nano  
Data Path: C:\...ents and Settings\Bioanalyzer\2013-11-13\2013-11-13\_001.xad

Created: 11/13/2013 1:47:52 PM  
Modified: 11/13/2013 2:11:41 PM

Electrophoresis File Run Summary



Instrument Information:

Instrument Name: DE13701086      Firmware: C.01.069  
Serial#: DE13701086      Type: G2938B

Assay Information:

Assay Origin Path: C:\Program Files\Agilent\2100 bioanalyzer\2100 expert\assays\RNA\Eukaryote Total RNA Nano Series II.xsy

Assay Class: Eukaryote Total RNA Nano

Version: 2.6

Assay Comments: Total RNA Analysis ng sensitivity (Eukaryote)

© Copyright 2003 - 2009 Agilent Technologies, Inc.

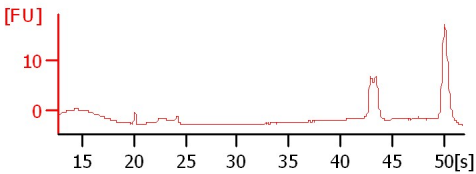
Chip Information:

Chip Lot #:

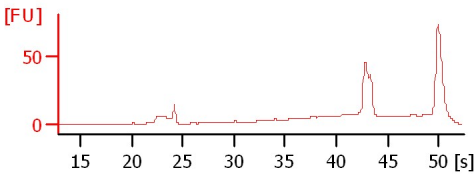
Reagent Kit Lot #:

Chip Comments:

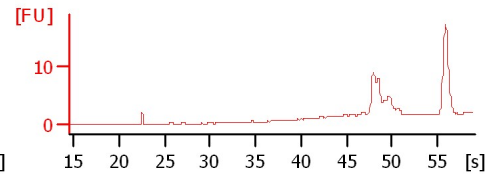
**Sample 1**  
RIN N/A



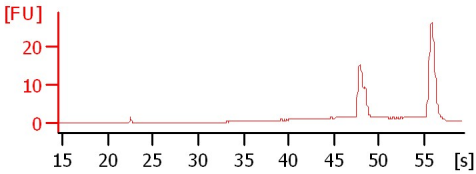
**Sample 2**  
RIN: 8.20



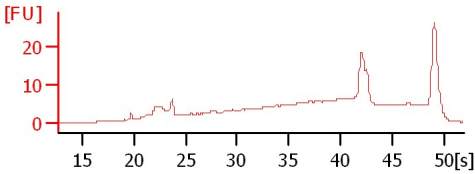
**Sample 3**  
RIN N/A



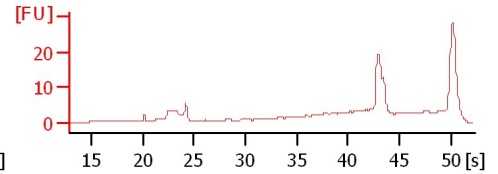
**Sample 4**  
RIN N/A



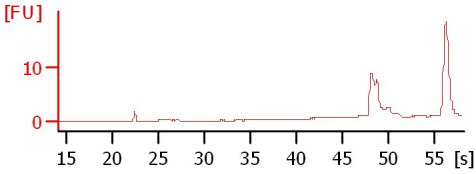
**Sample 5**  
RIN: 6



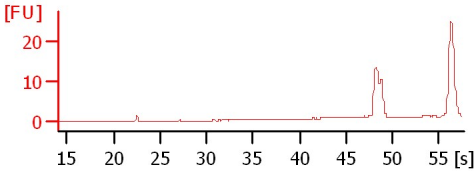
**Sample 6**  
RIN: 7.90



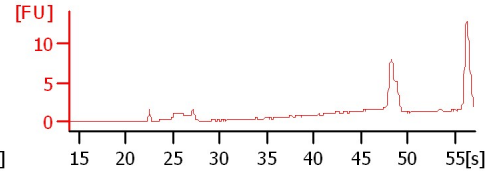
**Sample 7**  
RIN N/A



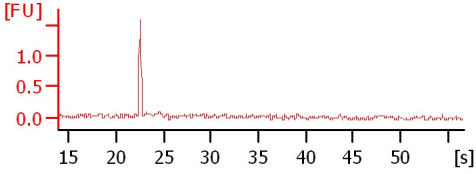
**Sample 8**  
RIN N/A



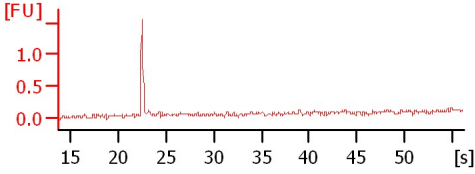
**Sample 9**  
RIN N/A



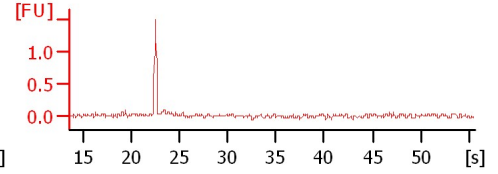
**Sample 10**  
RIN N/A



**Sample 11**  
RIN N/A



**Sample 12**  
RIN N/A



Assay Class: Eukaryote Total RNA Nano  
 Data Path: C:\...ents and Settings\Bioanalyzer\2013-11-13\2013-11-13\_001.xad

Created: 11/13/2013 1:47:52 PM  
 Modified: 11/13/2013 2:11:41 PM

**Electrophoresis File Run Summary (Chip Summary)**

Sample Name	Sample Comment	Status	Result Label	Result Color
Sample 1		✓	RIN N/A	
Sample 2		✓	RIN: 8.20	
Sample 3		✓	RIN N/A	
Sample 4		✓	RIN N/A	
Sample 5		✓	RIN:6	
Sample 6		✓	RIN: 7.90	
Sample 7		✓	RIN N/A	
Sample 8		✓	RIN N/A	
Sample 9		✓	RIN N/A	
Sample 10		✓	RIN N/A	
Sample 11		✓	RIN N/A	
Sample 12		✓	RIN N/A	
Ladder		✓	All Other Samples	

**Chip Lot #**

**Reagent Kit Lot #**

**Chip Comments :**

Assay Class: Eukaryote Total RNA Nano  
Data Path: C:\...ents and Settings\Bioanalyzer\2013-11-13\2013-11-13\_001.xad

Created: 11/13/2013 1:47:52 PM  
Modified: 11/13/2013 2:11:41 PM

**Electrophoresis Assay Details**

**General Analysis Settings**

Number of Available Sample and Ladder Wells (Max.) : 13  
Minimum Visible Range [s] : 17  
Maximum Visible Range [s] : 70  
Start Analysis Time Range [s] : 19  
End Analysis Time Range [s] : 69  
Ladder Concentration [ng/μl] : 150  
Lower Marker Concentration [ng/μl] : 0  
Upper Marker Concentration [ng/μl] : 0  
Used Lower Marker for Quantitation  
Standard Curve Fit is Logarithmic  
Show Data Aligned to Lower Marker

**Integrator Settings**

Integration Start Time [s] : 19  
Integration End Time [s] : 69  
Slope Threshold : 0.6  
Height Threshold [FU] : 0.5  
Area Threshold : 0.2  
Width Threshold [s] : 0.5  
Baseline Plateau [s] : 6

**Filter Settings**

Filter Width [s] : 0.5  
Polynomial Order : 4

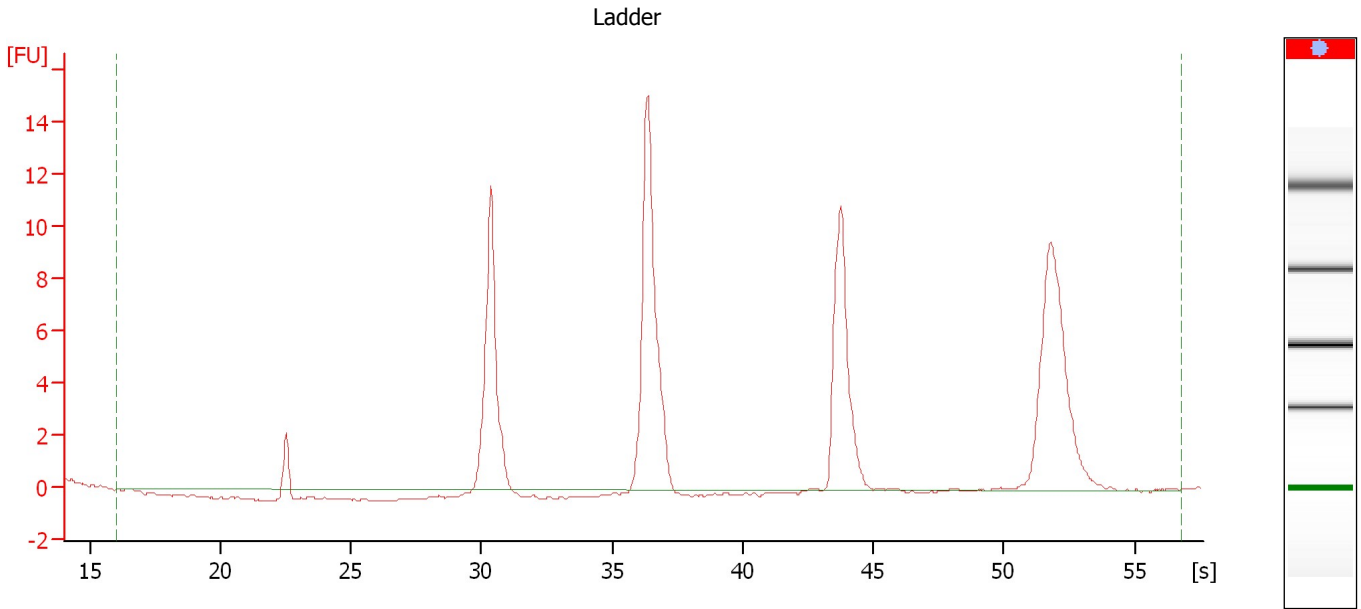
**Ladder**

Ladder Peak	Size
1	25
2	200
3	500
4	1000
5	2000
6	4000

Assay Class: Eukaryote Total RNA Nano  
Data Path: C:\...ents and Settings\Bioanalyzer\2013-11-13\2013-11-13\_001.xad

Created: 11/13/2013 1:47:52 PM  
Modified: 11/13/2013 2:11:41 PM

**Electropherogram Summary**



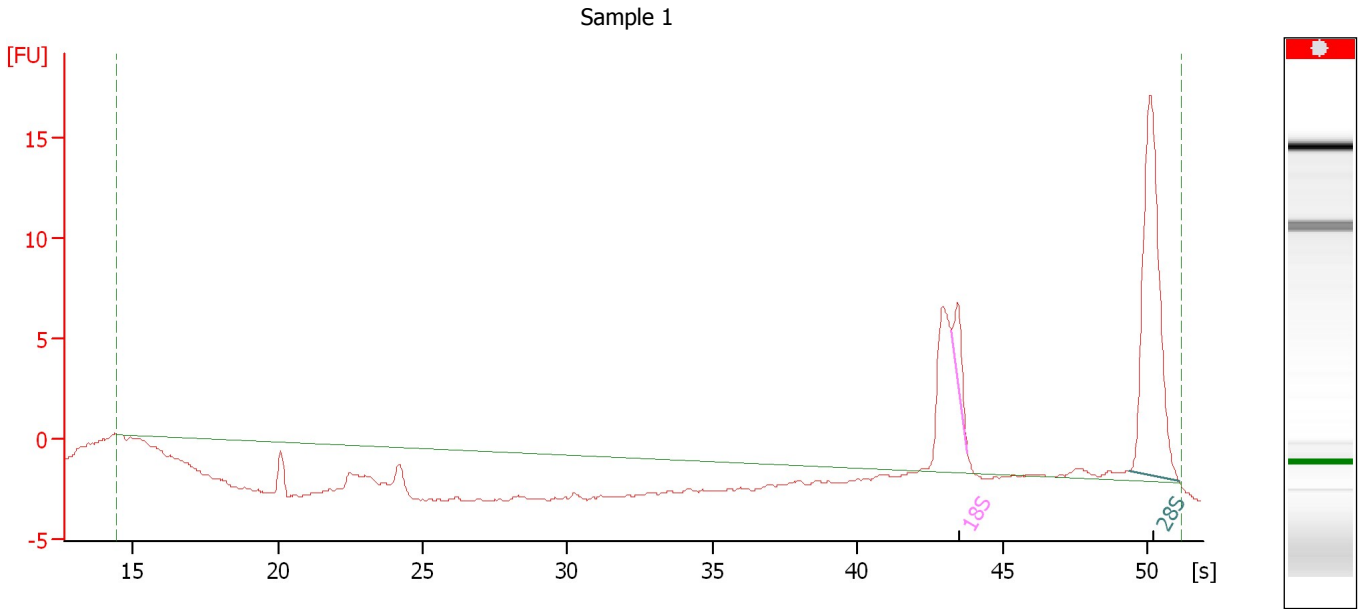
**Overall Results for Ladder**

RNA Area:	76.8	Result Flagging Color:	<span style="background-color: #add8e6; border: 1px solid black; display: inline-block; width: 20px; height: 10px;"></span>
RNA Concentration:	150 ng/ $\mu$ l	Result Flagging Label:	All Other Samples

Assay Class: Eukaryote Total RNA Nano  
 Data Path: C:\...ents and Settings\Bioanalyzer\2013-11-13\2013-11-13\_001.xad

Created: 11/13/2013 1:47:52 PM  
 Modified: 11/13/2013 2:11:41 PM

**Electropherogram Summary Continued ...**



**Overall Results for sample 1 : Sample 1**

RNA Area:	44.9	RNA Integrity Number (RIN):	N/A (B.02.08)
RNA Concentration:	88 ng/μl	Result Flagging Color:	<span style="background-color: #cccccc; border: 1px solid black; display: inline-block; width: 20px; height: 10px;"></span>
rRNA Ratio [28s / 18s]:	10.7	Result Flagging Label:	RIN N/A

**Fragment table for sample 1 : Sample 1**

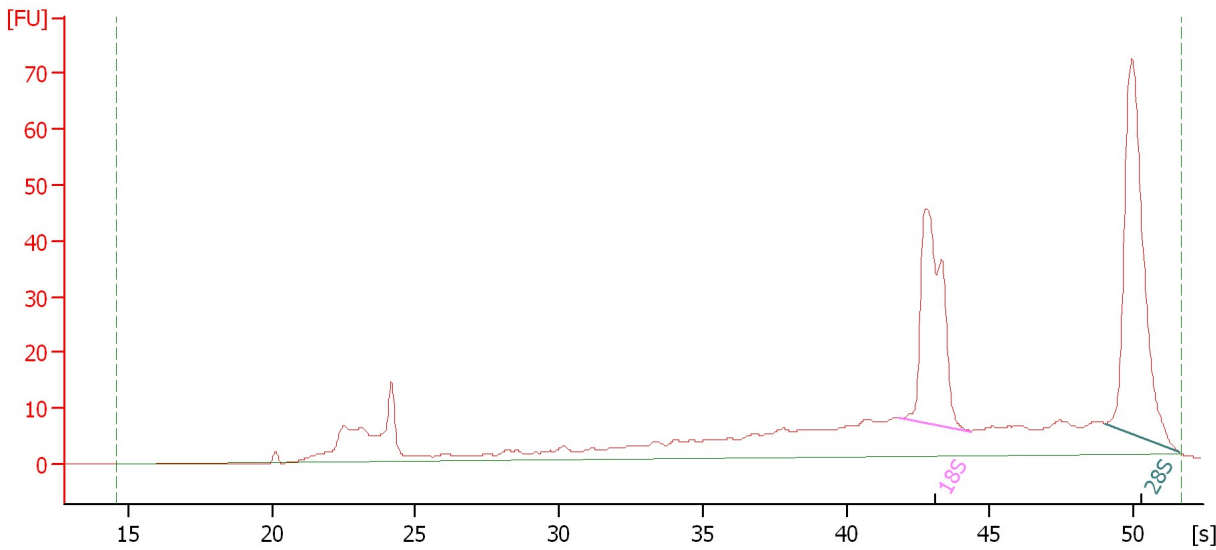
Name	Start Size [nt]	End Size [nt]	Area	% of total Area
18S	0	0	2.3	5.1
28S	0	0	24.6	54.8

Assay Class: Eukaryote Total RNA Nano  
Data Path: C:\...ents and Settings\Bioanalyzer\2013-11-13\2013-11-13\_001.xad

Created: 11/13/2013 1:47:52 PM  
Modified: 11/13/2013 2:11:41 PM

**Electropherogram Summary Continued ...**

Sample 2



**Overall Results for sample 2 : Sample 2**

RNA Area:	463.7	RNA Integrity Number (RIN):	8.2 (B.02.08)
RNA Concentration:	905 ng/μl	Result Flagging Color:	<span style="background-color: #ccccff; border: 1px solid black; display: inline-block; width: 20px; height: 10px;"></span>
rRNA Ratio [28s / 18s]:	1.3	Result Flagging Label:	RIN: 8.20

**Fragment table for sample 2 : Sample 2**

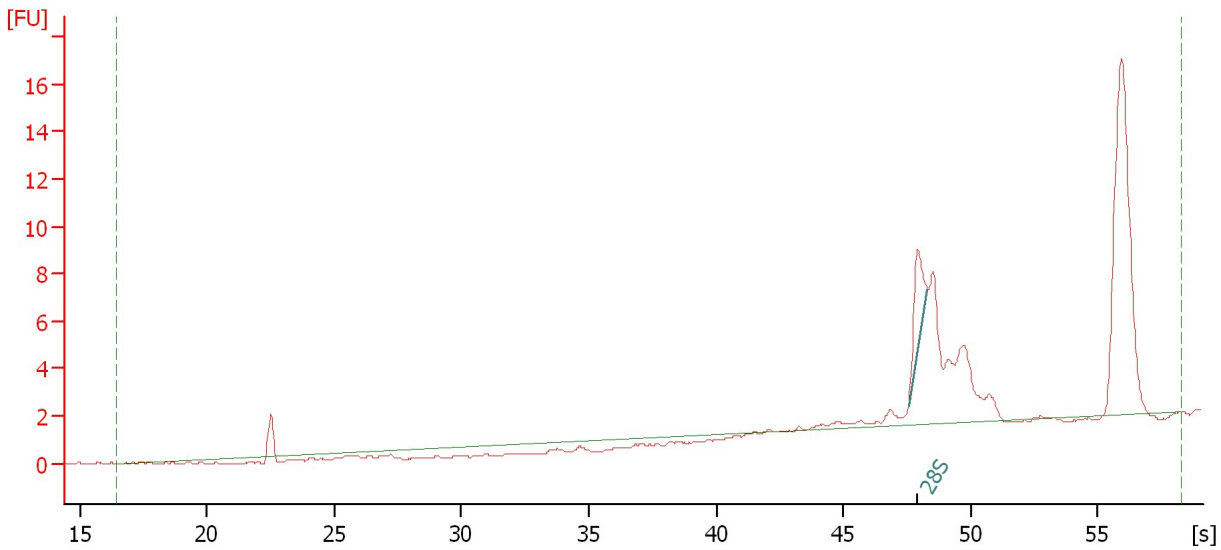
Name	Start Size [nt]	End Size [nt]	Area	% of total Area
18S	0	0	76.7	16.5
28S	0	0	102.5	22.1

Assay Class: Eukaryote Total RNA Nano  
 Data Path: C:\...ents and Settings\Bioanalyzer\2013-11-13\2013-11-13\_001.xad

Created: 11/13/2013 1:47:52 PM  
 Modified: 11/13/2013 2:11:41 PM

**Electropherogram Summary Continued ...**

Sample 3



**Overall Results for sample 3 : Sample 3**

RNA Area:	43.8	RNA Integrity Number (RIN):	N/A (B.02.08)
RNA Concentration:	86 ng/μl	Result Flagging Color:	<span style="background-color: #cccccc; border: 1px solid black; display: inline-block; width: 20px; height: 10px;"></span>
rRNA Ratio [28s / 18s]:	0.0	Result Flagging Label:	RIN N/A

**Fragment table for sample 3 : Sample 3**

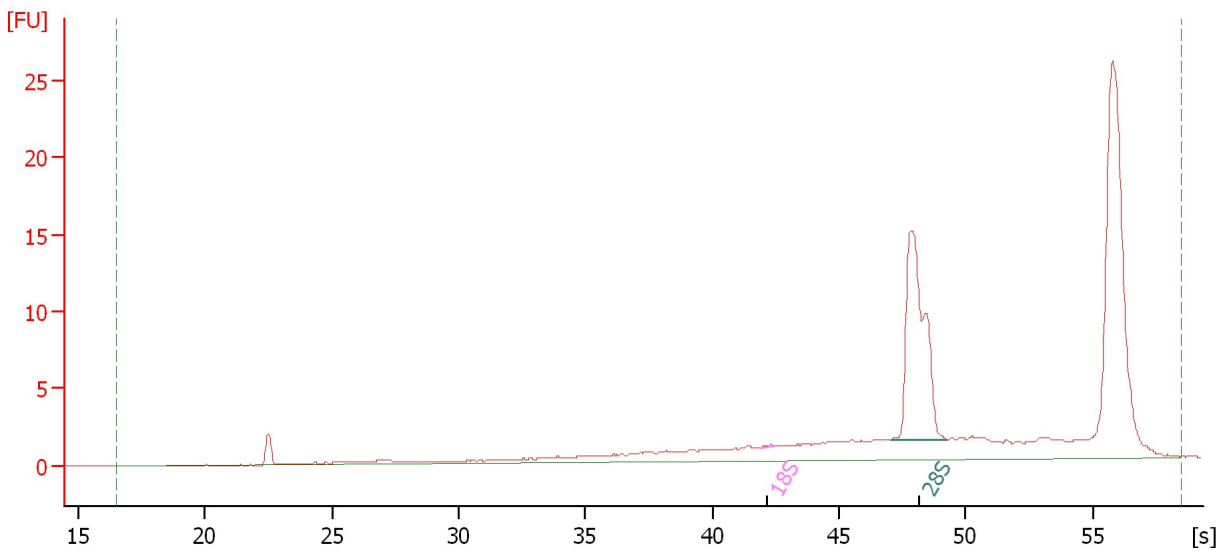
Name	Start Size [nt]	End Size [nt]	Area	% of total Area
28S	0	0	3.5	7.9

Assay Class: Eukaryote Total RNA Nano  
Data Path: C:\...ents and Settings\Bioanalyzer\2013-11-13\2013-11-13\_001.xad

Created: 11/13/2013 1:47:52 PM  
Modified: 11/13/2013 2:11:41 PM

**Electropherogram Summary Continued ...**

Sample 4



**Overall Results for sample 4 : Sample 4**

RNA Area:	107.9	RNA Integrity Number (RIN):	N/A (B.02.08)
RNA Concentration:	211 ng/μl	Result Flagging Color:	<span style="background-color: #cccccc; border: 1px solid black; display: inline-block; width: 20px; height: 10px;"></span>
rRNA Ratio [28s / 18s]:	269.0	Result Flagging Label:	RIN N/A

**Fragment table for sample 4 : Sample 4**

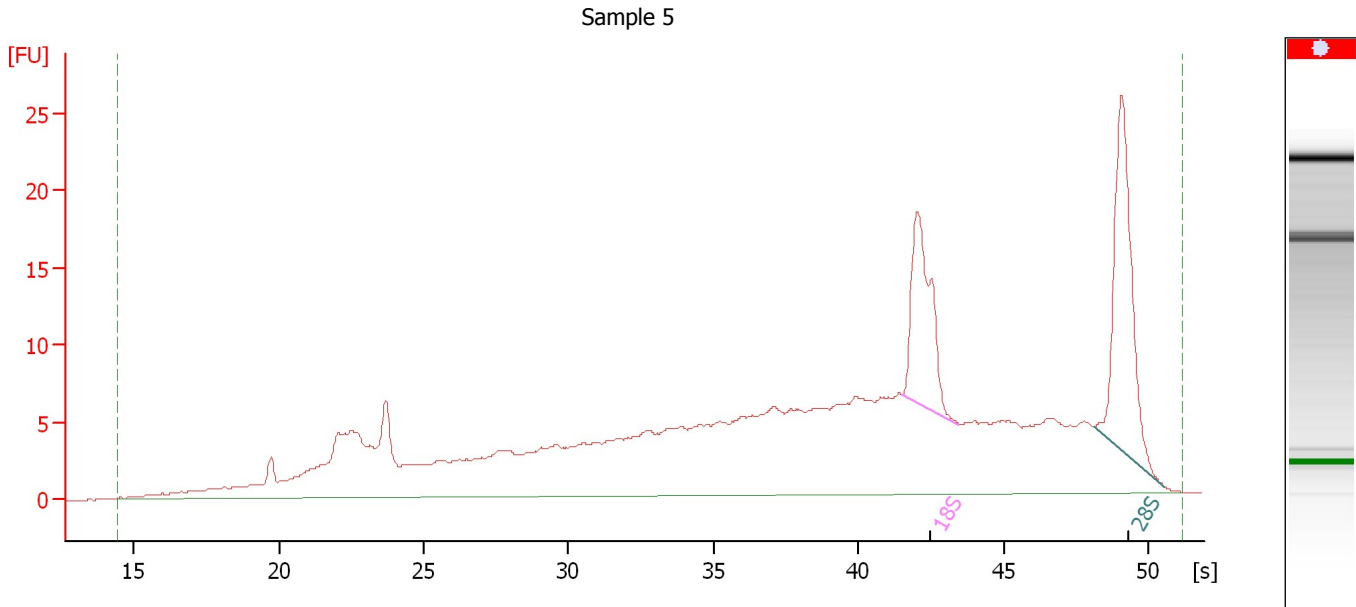
Name	Start Size [nt]	End Size [nt]	Area	% of total Area
18S	0	0	0.1	0.1
28S	0	0	23.3	21.6



Assay Class: Eukaryote Total RNA Nano  
 Data Path: C:\...ents and Settings\Bioanalyzer\2013-11-13\2013-11-13\_001.xad

Created: 11/13/2013 1:47:52 PM  
 Modified: 11/13/2013 2:11:41 PM

**Electropherogram Summary Continued ...**



**Overall Results for sample 5 : Sample 5**

RNA Area:	385.9	RNA Integrity Number (RIN):	6 (B.02.08)
RNA Concentration:	754 ng/μl	Result Flagging Color:	<span style="background-color: #ccccff; border: 1px solid black; display: inline-block; width: 20px; height: 10px;"></span>
rRNA Ratio [28s / 18s]:	1.4	Result Flagging Label:	RIN:6

**Fragment table for sample 5 : Sample 5**

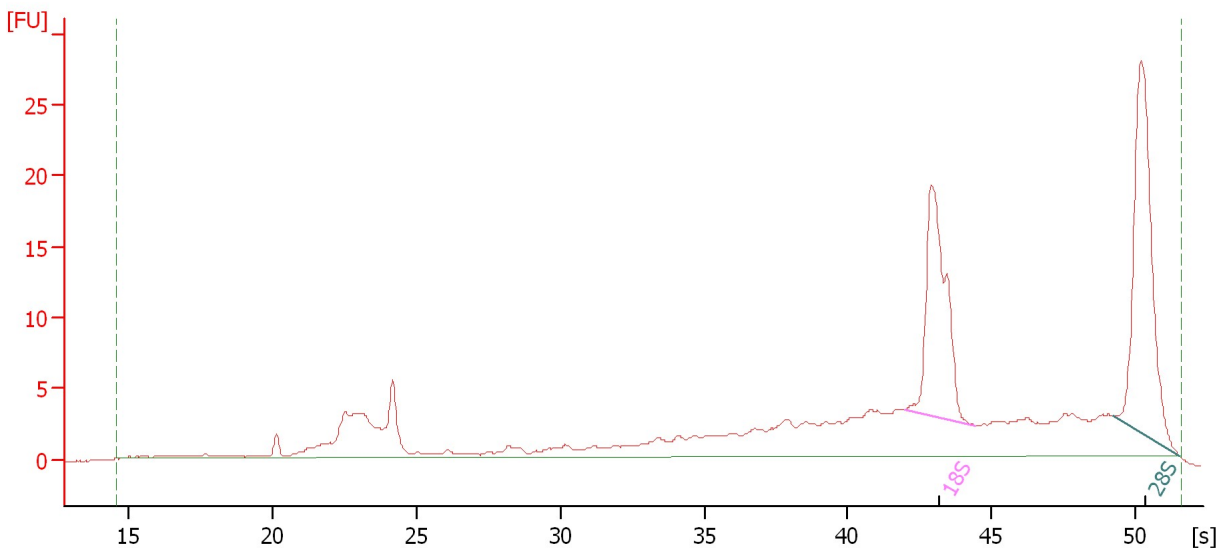
Name	Start Size [nt]	End Size [nt]	Area	% of total Area
18S	0	0	22.7	5.9
28S	0	0	32.2	8.3

Assay Class: Eukaryote Total RNA Nano  
 Data Path: C:\...ents and Settings\Bioanalyzer\2013-11-13\2013-11-13\_001.xad

Created: 11/13/2013 1:47:52 PM  
 Modified: 11/13/2013 2:11:41 PM

**Electropherogram Summary Continued ...**

Sample 6



**Overall Results for sample 6 : Sample 6**

RNA Area:	199.0	RNA Integrity Number (RIN):	7.9 (B.02.08)
RNA Concentration:	389 ng/μl	Result Flagging Color:	<span style="background-color: #ccccff; border: 1px solid black; display: inline-block; width: 20px; height: 10px;"></span>
rRNA Ratio [28s / 18s]:	1.2	Result Flagging Label:	RIN: 7.90

**Fragment table for sample 6 : Sample 6**

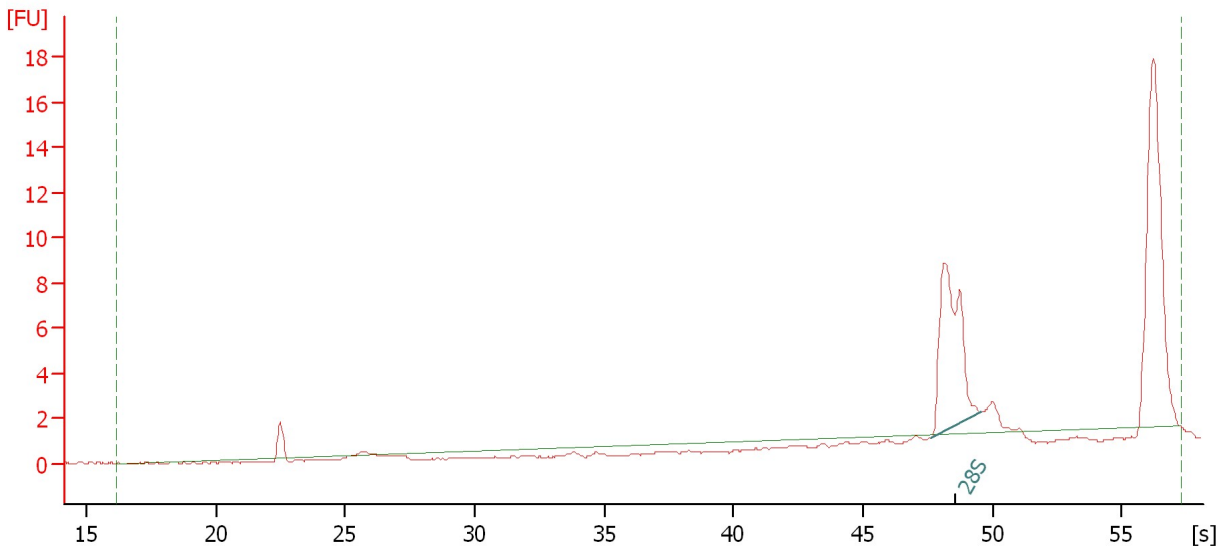
Name	Start Size [nt]	End Size [nt]	Area	% of total Area
18S	0	0	30.0	15.1
28S	0	0	37.1	18.6

Assay Class: Eukaryote Total RNA Nano  
Data Path: C:\...ents and Settings\Bioanalyzer\2013-11-13\2013-11-13\_001.xad

Created: 11/13/2013 1:47:52 PM  
Modified: 11/13/2013 2:11:41 PM

**Electropherogram Summary Continued ...**

Sample 7



**Overall Results for sample 7 : Sample 7**

RNA Area:	35.9	RNA Integrity Number (RIN):	N/A (B.02.08)
RNA Concentration:	70 ng/μl	Result Flagging Color:	<span style="background-color: #cccccc; border: 1px solid black; display: inline-block; width: 20px; height: 10px;"></span>
rRNA Ratio [28s / 18s]:	0.0	Result Flagging Label:	RIN N/A

**Fragment table for sample 7 : Sample 7**

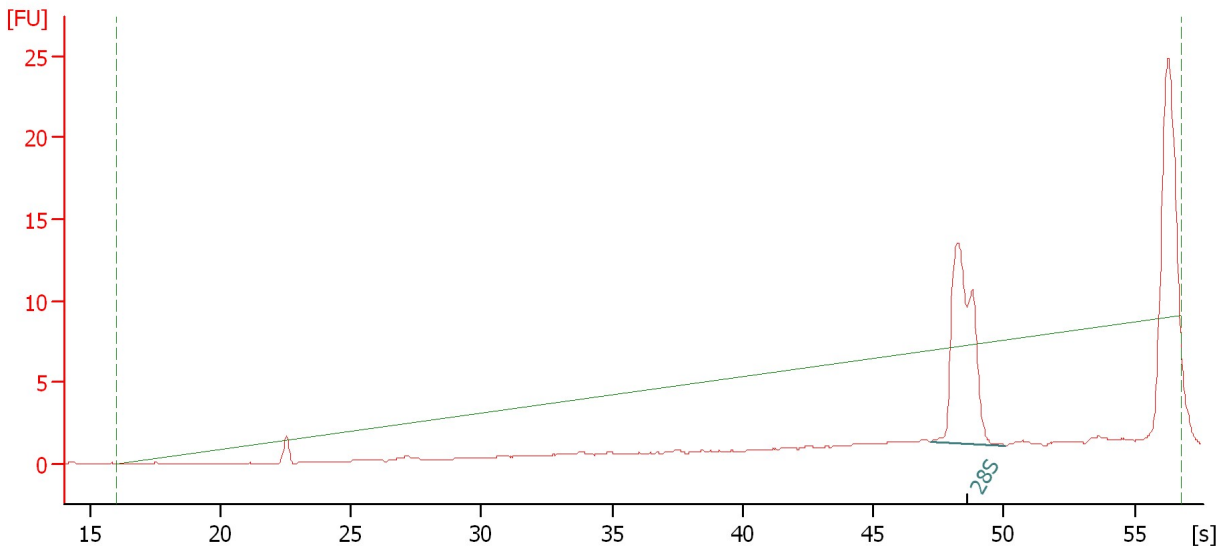
Name	Start Size [nt]	End Size [nt]	Area	% of total Area
28S	0	0	13.7	38.3

Assay Class: Eukaryote Total RNA Nano  
 Data Path: C:\...ents and Settings\Bioanalyzer\2013-11-13\2013-11-13\_001.xad

Created: 11/13/2013 1:47:52 PM  
 Modified: 11/13/2013 2:11:41 PM

**Electropherogram Summary Continued ...**

Sample 8



**Overall Results for sample 8 : Sample 8**

RNA Area:	21.6	RNA Integrity Number (RIN):	N/A (B.02.08)
RNA Concentration:	42 ng/μl	Result Flagging Color:	<span style="background-color: #cccccc; border: 1px solid black; display: inline-block; width: 20px; height: 10px;"></span>
rRNA Ratio [28s / 18s]:	0.0	Result Flagging Label:	RIN N/A

**Fragment table for sample 8 : Sample 8**

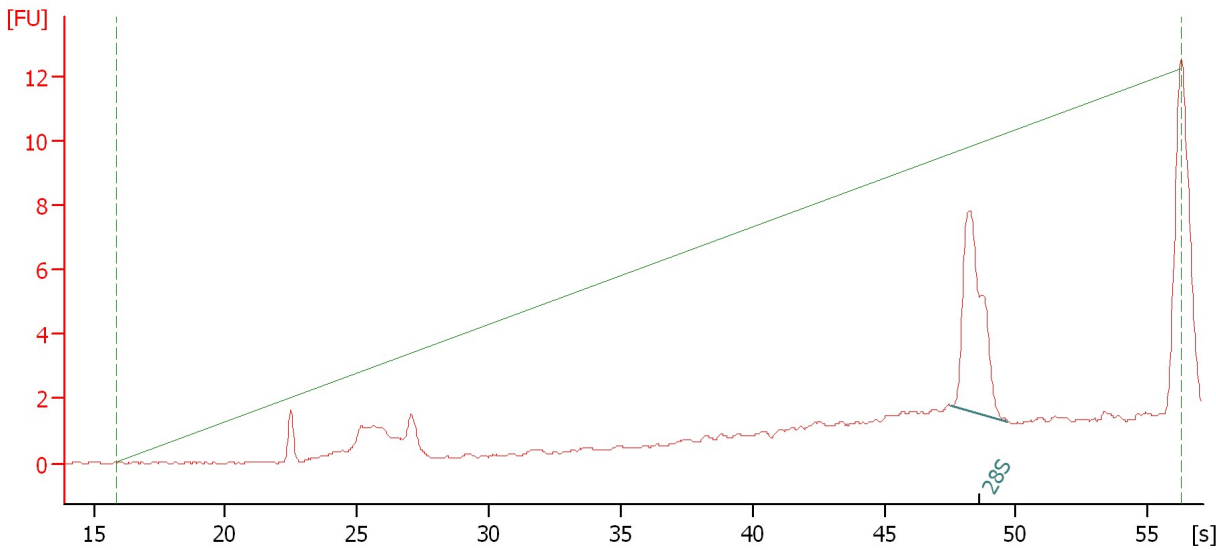
Name	Start Size [nt]	End Size [nt]	Area	% of total Area
28S	0	0	23.4	108.3

Assay Class: Eukaryote Total RNA Nano  
Data Path: C:\...ents and Settings\Bioanalyzer\2013-11-13\2013-11-13\_001.xad

Created: 11/13/2013 1:47:52 PM  
Modified: 11/13/2013 2:11:41 PM

**Electropherogram Summary Continued ...**

Sample 9



**Overall Results for sample 9 : Sample 9**

RNA Area:	0.0	RNA Integrity Number (RIN):	N/A (B.02.08)
RNA Concentration:	0 ng/μl	Result Flagging Color:	
rRNA Ratio [28s / 18s]:	0.0	Result Flagging Label:	RIN N/A

**Fragment table for sample 9 : Sample 9**

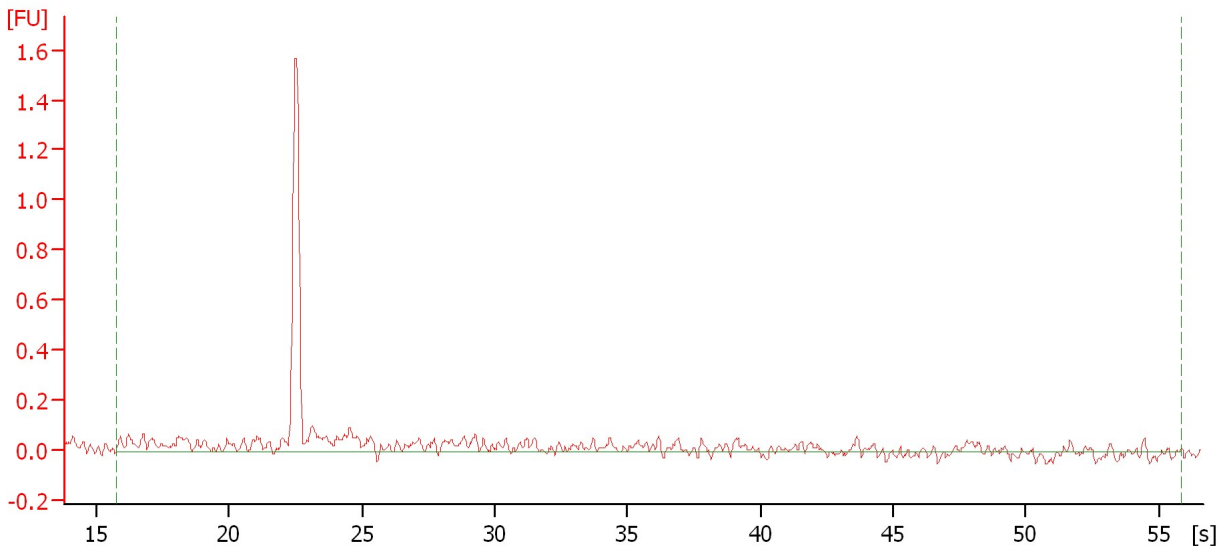
Name	Start Size [nt]	End Size [nt]	Area	% of total Area
28S	0	0	10.8	87,170.7

Assay Class: Eukaryote Total RNA Nano  
Data Path: C:\...ents and Settings\Bioanalyzer\2013-11-13\2013-11-13\_001.xad


Created: 11/13/2013 1:47:52 PM  
Modified: 11/13/2013 2:11:41 PM

**Electropherogram Summary Continued ...**

Sample 10



**Overall Results for sample 10 : Sample 10**

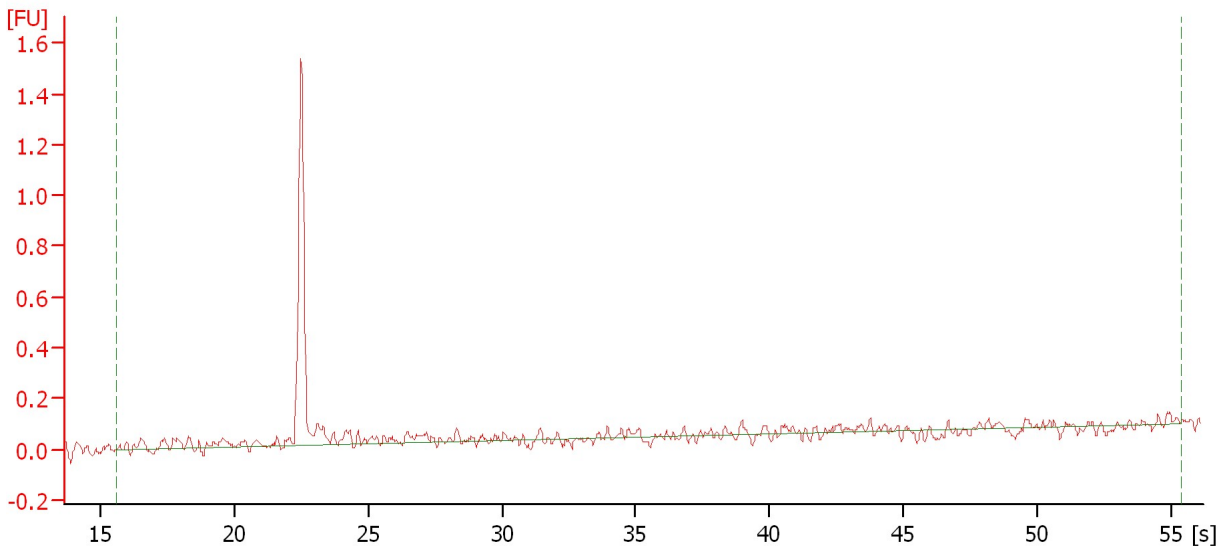
RNA Area:	2.9	RNA Integrity Number (RIN):	N/A (B.02.08)
RNA Concentration:	6 ng/μl	Result Flagging Color:	
rRNA Ratio [28s / 18s]:	0.0	Result Flagging Label:	RIN N/A

Assay Class: Eukaryote Total RNA Nano  
Data Path: C:\...ents and Settings\Bioanalyzer\2013-11-13\2013-11-13\_001.xad

Created: 11/13/2013 1:47:52 PM  
Modified: 11/13/2013 2:11:41 PM

**Electropherogram Summary Continued ...**

Sample 11



**Overall Results for sample 11 : Sample 11**

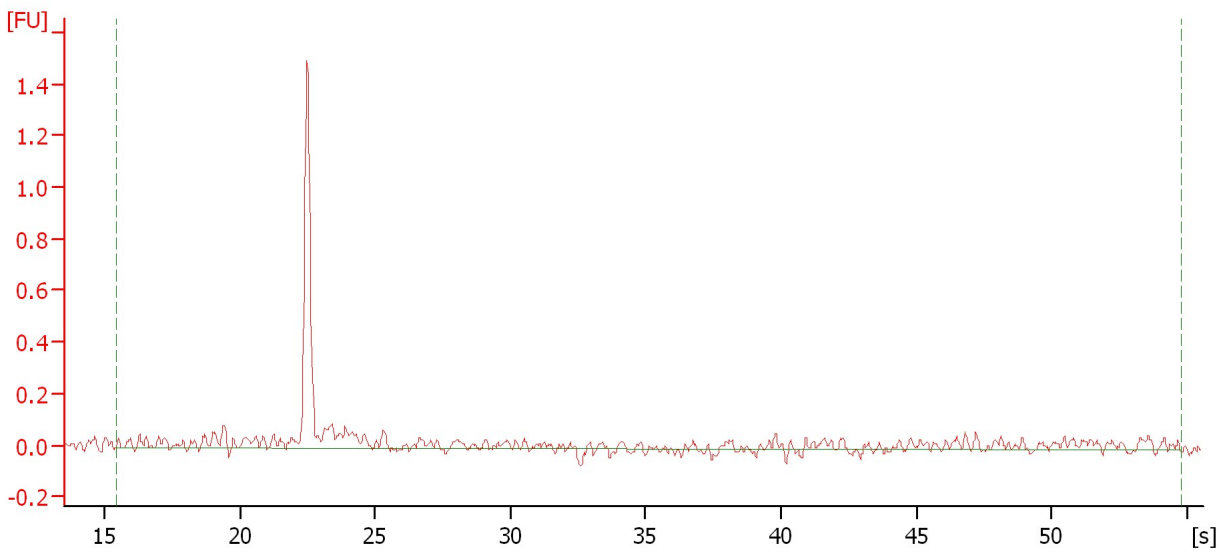
RNA Area:	1.5	RNA Integrity Number (RIN):	N/A (B.02.08)
RNA Concentration:	3 ng/μl	Result Flagging Color:	<span style="background-color: #cccccc; border: 1px solid black; display: inline-block; width: 20px; height: 10px;"></span>
rRNA Ratio [28s / 18s]:	0.0	Result Flagging Label:	RIN N/A

Assay Class: Eukaryote Total RNA Nano  
Data Path: C:\...ents and Settings\Bioanalyzer\2013-11-13\2013-11-13\_001.xad

Created: 11/13/2013 1:47:52 PM  
Modified: 11/13/2013 2:11:41 PM

**Electropherogram Summary Continued ...**

Sample 12



**Overall Results for sample 12 : Sample 12**

RNA Area:	2.1	RNA Integrity Number (RIN):	N/A (B.02.08)
RNA Concentration:	4 ng/μl	Result Flagging Color:	<span style="background-color: #cccccc; border: 1px solid black; display: inline-block; width: 20px; height: 10px;"></span>
rRNA Ratio [28s / 18s]:	0.0	Result Flagging Label:	RIN N/A



Assay Class: Eukaryote Total RNA Nano  
Data Path: C:\...ents and Settings\Bioanalyzer\2013-11-13\2013-11-13\_001.xad

Created: 11/13/2013 1:47:52 PM  
Modified: 11/13/2013 2:11:41 PM

**Gel Image**

