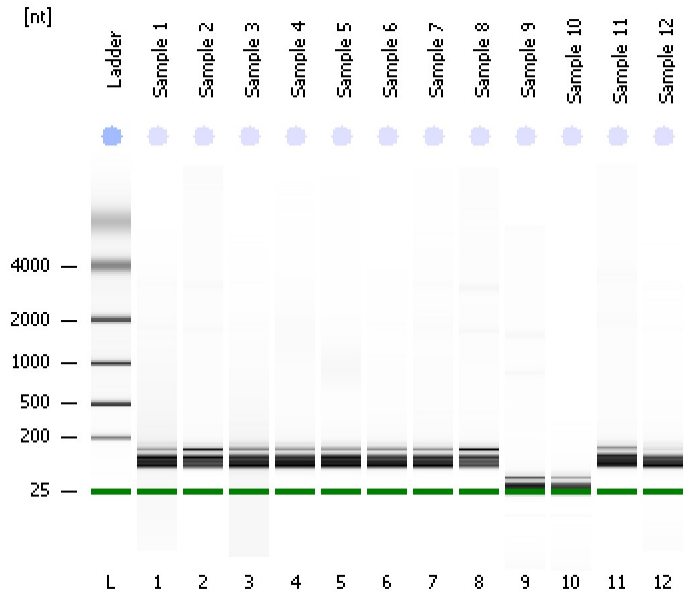


Assay Class: Eukaryote Total RNA Nano
Data Path: C:\...ents and Settings\Bioanalyzer\2013-11-13\2013-11-13_002.xad

Created: 11/13/2013 3:41:13 PM
Modified: 11/13/2013 4:05:02 PM

Electrophoresis File Run Summary



Instrument Information:

Instrument Name: DE13701086 Firmware: C.01.069
Serial#: DE13701086 Type: G2938B

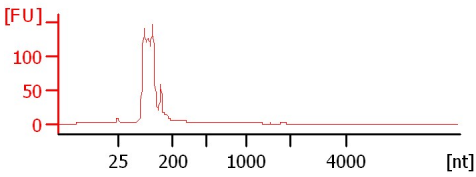
Assay Information:

Assay Origin Path: C:\Program Files\Agilent\2100 bioanalyzer\2100 expert\assays\RNA\Eukaryote Total RNA Nano Series II.xsy
Assay Class: Eukaryote Total RNA Nano
Version: 2.6
Assay Comments: Total RNA Analysis ng sensitivity (Eukaryote)
© Copyright 2003 - 2009 Agilent Technologies, Inc.

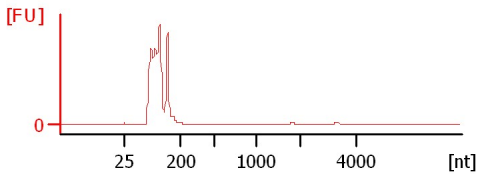
Chip Information:

Chip Lot #: Reagent Kit Lot #: Chip Comments:

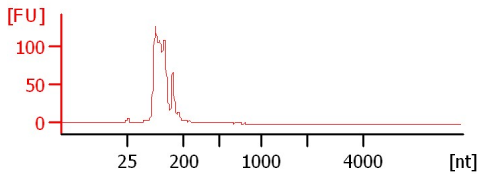
Sample 1
RIN: 2.50



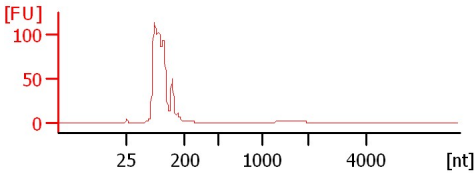
Sample 2
RIN: 2.60



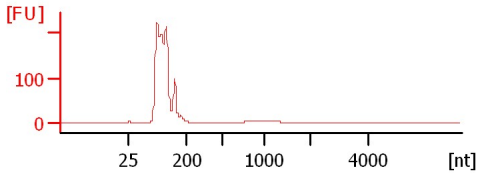
Sample 3
RIN: 2.60



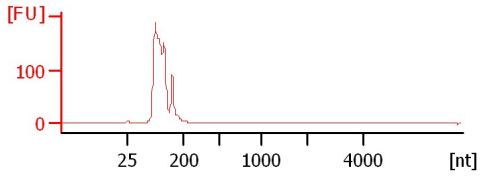
Sample 4
RIN: 2.50



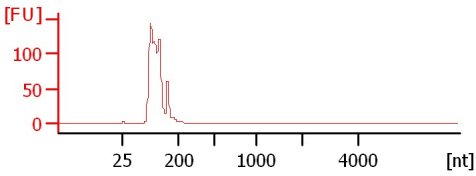
Sample 5
RIN: 2.50



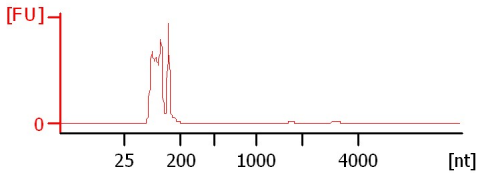
Sample 6
RIN: 2.50



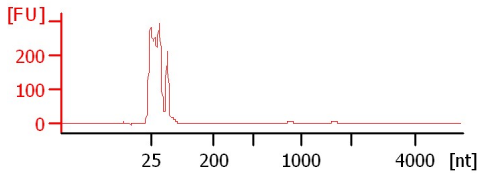
Sample 7
RIN: 2.50



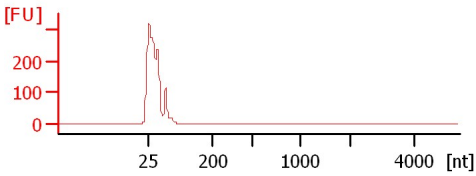
Sample 8
RIN: 2.60



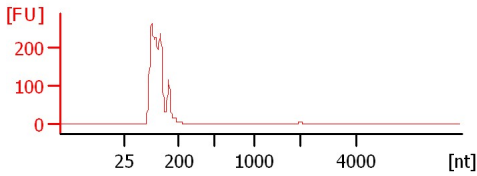
Sample 9
RIN: 2.70



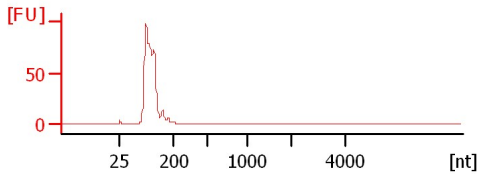
Sample 10
RIN: 2.50



Sample 11
RIN: 2.50



Sample 12
RIN: 2.50



Assay Class: Eukaryote Total RNA Nano
 Data Path: C:\...ents and Settings\Bioanalyzer\2013-11-13\2013-11-13_002.xad

Created: 11/13/2013 3:41:13 PM
 Modified: 11/13/2013 4:05:02 PM

Electrophoresis File Run Summary (Chip Summary)

Sample Name	Sample Comment	Status	Result Label	Result Color
Sample 1		✓	RIN: 2.50	
Sample 2		✓	RIN: 2.60	
Sample 3		✓	RIN: 2.60	
Sample 4		✓	RIN: 2.50	
Sample 5		✓	RIN: 2.50	
Sample 6		✓	RIN: 2.50	
Sample 7		✓	RIN: 2.50	
Sample 8		✓	RIN: 2.60	
Sample 9		✓	RIN: 2.70	
Sample 10		✓	RIN: 2.50	
Sample 11		✓	RIN: 2.50	
Sample 12		✓	RIN: 2.50	
Ladder		✓	All Other Samples	

Chip Lot #

Reagent Kit Lot #

Chip Comments :

Assay Class: Eukaryote Total RNA Nano
Data Path: C:\...ents and Settings\Bioanalyzer\2013-11-13\2013-11-13_002.xad

Created: 11/13/2013 3:41:13 PM
Modified: 11/13/2013 4:05:02 PM

Electrophoresis Assay Details

General Analysis Settings

Number of Available Sample and Ladder Wells (Max.) : 13
Minimum Visible Range [s] : 17
Maximum Visible Range [s] : 70
Start Analysis Time Range [s] : 19
End Analysis Time Range [s] : 69
Ladder Concentration [ng/μl] : 150
Lower Marker Concentration [ng/μl] : 0
Upper Marker Concentration [ng/μl] : 0
Used Lower Marker for Quantitation
Standard Curve Fit is Logarithmic
Show Data Aligned to Lower Marker

Integrator Settings

Integration Start Time [s] : 19
Integration End Time [s] : 69
Slope Threshold : 0.6
Height Threshold [FU] : 0.5
Area Threshold : 0.2
Width Threshold [s] : 0.5
Baseline Plateau [s] : 6

Filter Settings

Filter Width [s] : 0.5
Polynomial Order : 4

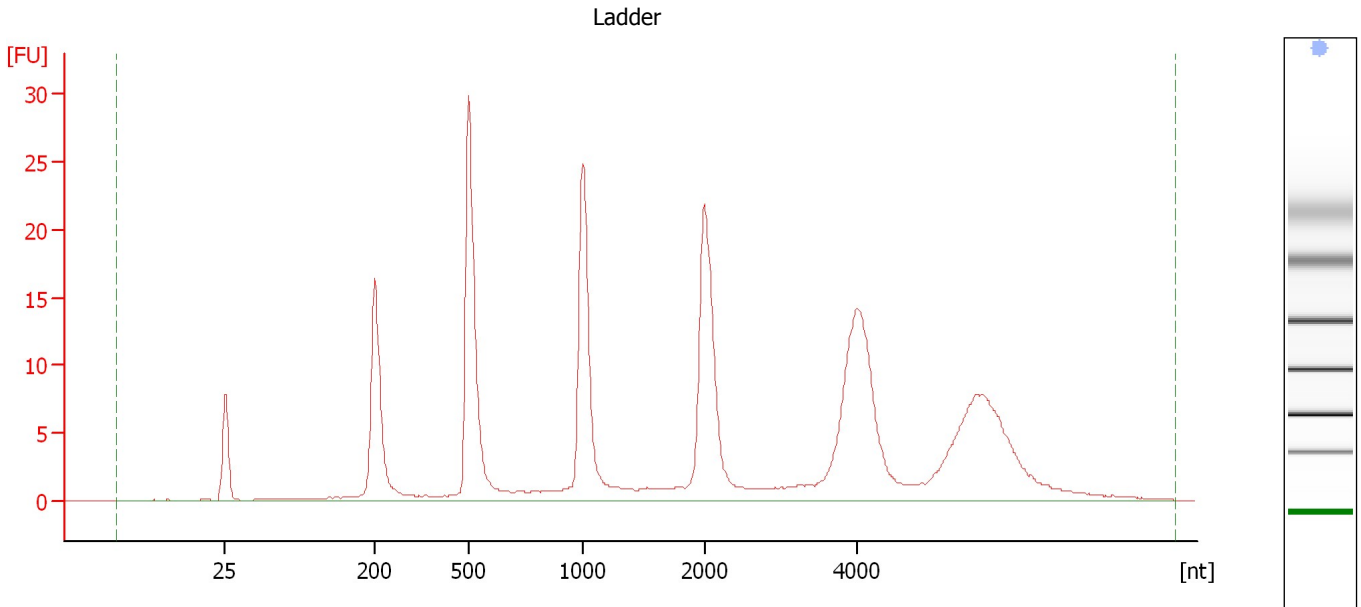
Ladder

Ladder Peak	Size
1	25
2	200
3	500
4	1000
5	2000
6	4000

Assay Class: Eukaryote Total RNA Nano
Data Path: C:\...ents and Settings\Bioanalyzer\2013-11-13\2013-11-13_002.xad

Created: 11/13/2013 3:41:13 PM
Modified: 11/13/2013 4:05:02 PM

Electropherogram Summary



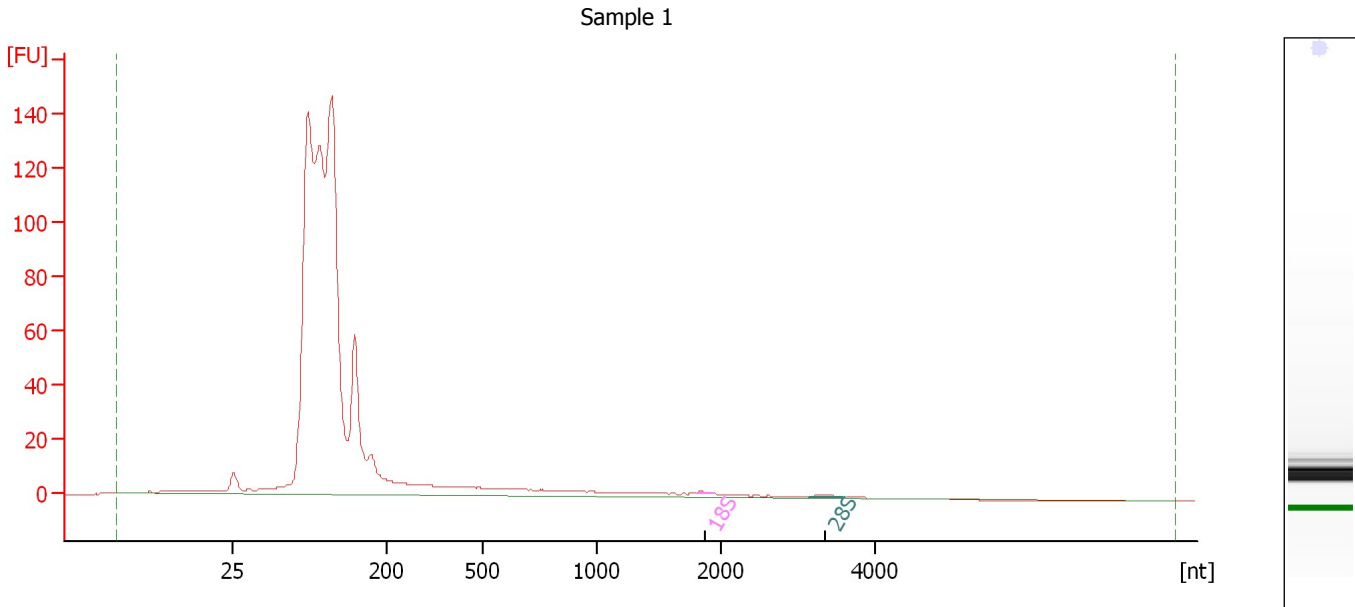
Overall Results for Ladder

RNA Area:	254.3	Result Flagging Color:	
RNA Concentration:	150 ng/μl	Result Flagging Label:	All Other Samples

Assay Class: Eukaryote Total RNA Nano
Data Path: C:\...ents and Settings\Bioanalyzer\2013-11-13\2013-11-13_002.xad

Created: 11/13/2013 3:41:13 PM
Modified: 11/13/2013 4:05:02 PM

Electropherogram Summary Continued ...



Overall Results for sample 1 : Sample 1

RNA Area:	1,080.3	RNA Integrity Number (RIN):	2.5 (B.02.08)
RNA Concentration:	637 ng/μl	Result Flagging Color:	
rRNA Ratio [28s / 18s]:	3.0	Result Flagging Label:	RIN: 2.50

Fragment table for sample 1 : Sample 1

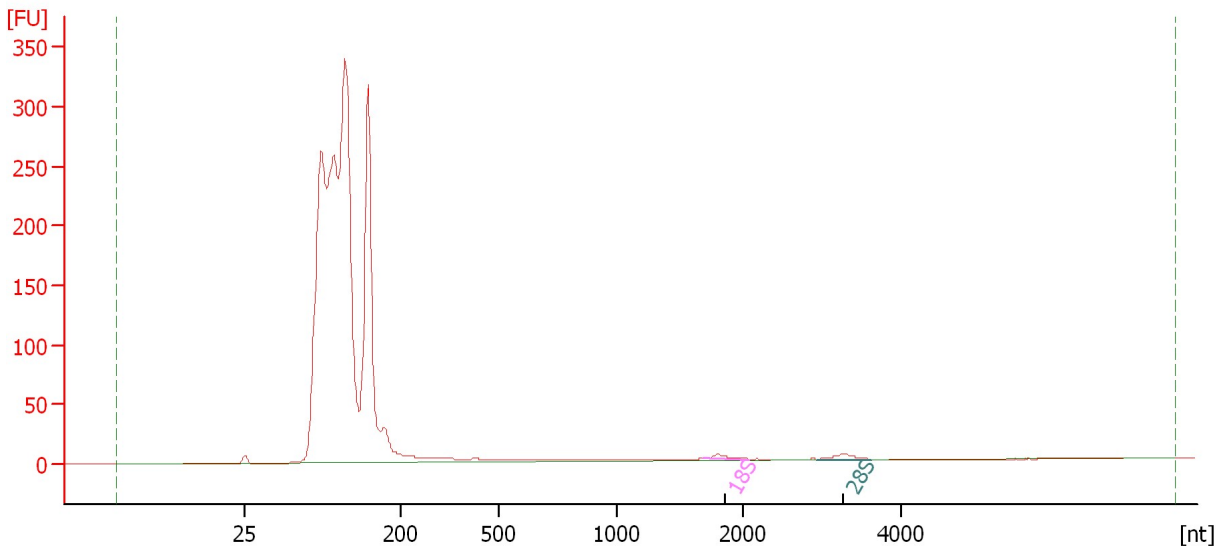
Name	Start Size [nt]	End Size [nt]	Area	% of total Area
18S	1,798	1,928	0.4	0.0
28S	3,132	3,589	1.3	0.1

Assay Class: Eukaryote Total RNA Nano
Data Path: C:\...ents and Settings\Bioanalyzer\2013-11-13\2013-11-13_002.xad

Created: 11/13/2013 3:41:13 PM
Modified: 11/13/2013 4:05:02 PM

Electropherogram Summary Continued ...

Sample 2



Overall Results for sample 2 : Sample 2

RNA Area:	2,185.1	RNA Integrity Number (RIN):	2.6 (B.02.08)
RNA Concentration:	1,289 ng/μl	Result Flagging Color:	
rRNA Ratio [28s / 18s]:	1.2	Result Flagging Label:	RIN: 2.60

Fragment table for sample 2 : Sample 2

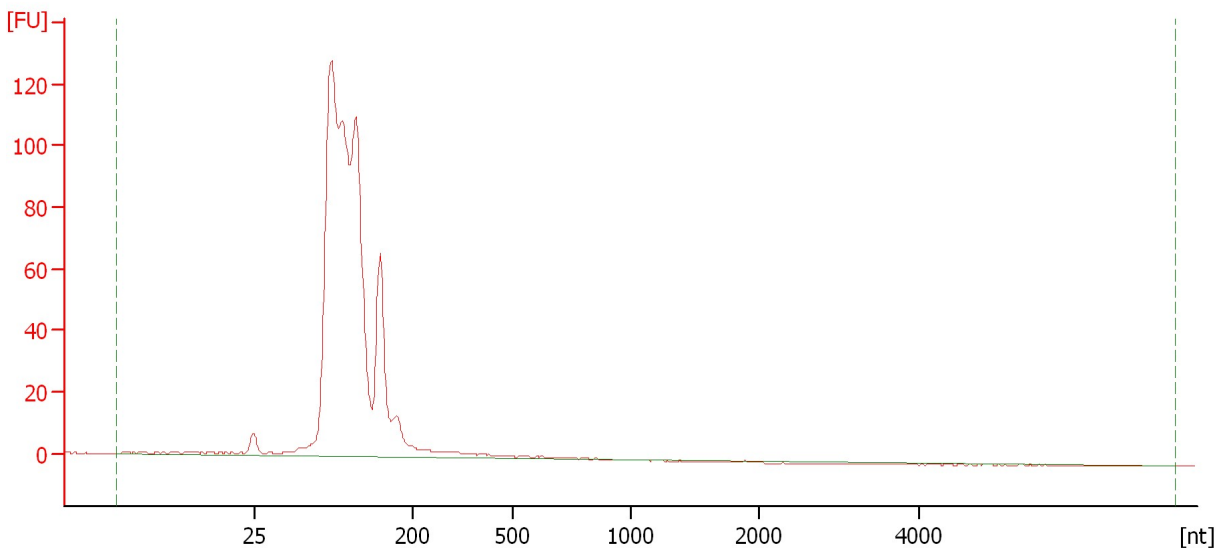
Name	Start Size [nt]	End Size [nt]	Area	% of total Area
18S	1,684	2,076	6.0	0.3
28S	2,944	3,622	7.4	0.3

Assay Class: Eukaryote Total RNA Nano
Data Path: C:\...ents and Settings\Bioanalyzer\2013-11-13\2013-11-13_002.xad

Created: 11/13/2013 3:41:13 PM
Modified: 11/13/2013 4:05:02 PM

Electropherogram Summary Continued ...

Sample 3



Overall Results for sample 3 : Sample 3

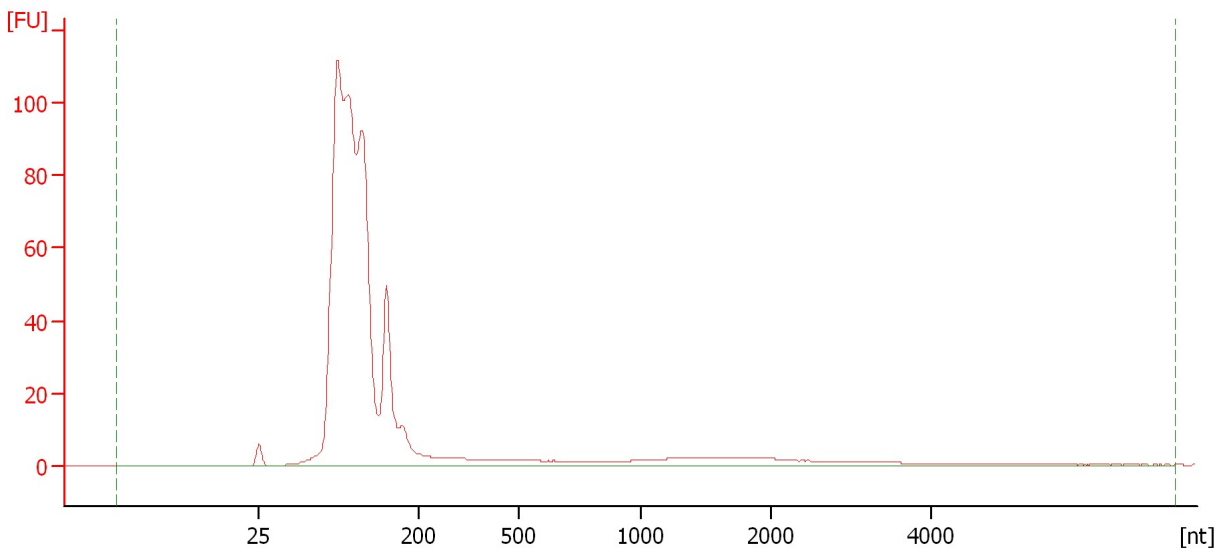
RNA Area:	870.3	RNA Integrity Number (RIN):	2.6 (B.02.08)
RNA Concentration:	513 ng/μl	Result Flagging Color:	
rRNA Ratio [28s / 18s]:	0.0	Result Flagging Label:	RIN: 2.60

Assay Class: Eukaryote Total RNA Nano
Data Path: C:\...ents and Settings\Bioanalyzer\2013-11-13\2013-11-13_002.xad

Created: 11/13/2013 3:41:13 PM
Modified: 11/13/2013 4:05:02 PM

Electropherogram Summary Continued ...

Sample 4



Overall Results for sample 4 : Sample 4

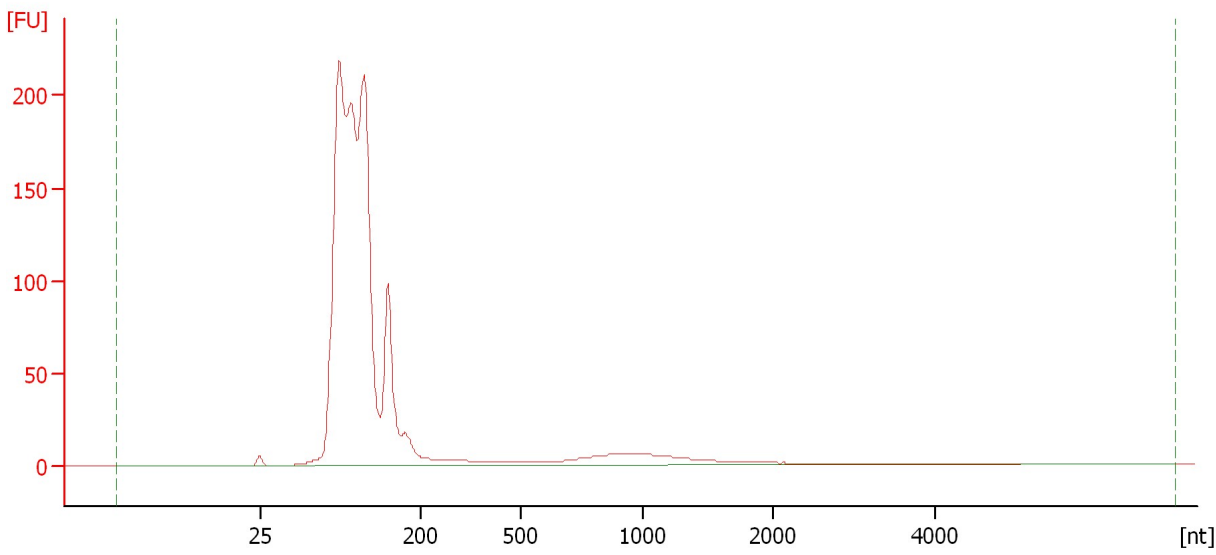
RNA Area:	798.1	RNA Integrity Number (RIN):	2.5 (B.02.08)
RNA Concentration:	471 ng/μl	Result Flagging Color:	
rRNA Ratio [28s / 18s]:	0.0	Result Flagging Label:	RIN: 2.50

Assay Class: Eukaryote Total RNA Nano
Data Path: C:\...ents and Settings\Bioanalyzer\2013-11-13\2013-11-13_002.xad

Created: 11/13/2013 3:41:13 PM
Modified: 11/13/2013 4:05:02 PM

Electropherogram Summary Continued ...

Sample 5



Overall Results for sample 5 : Sample 5

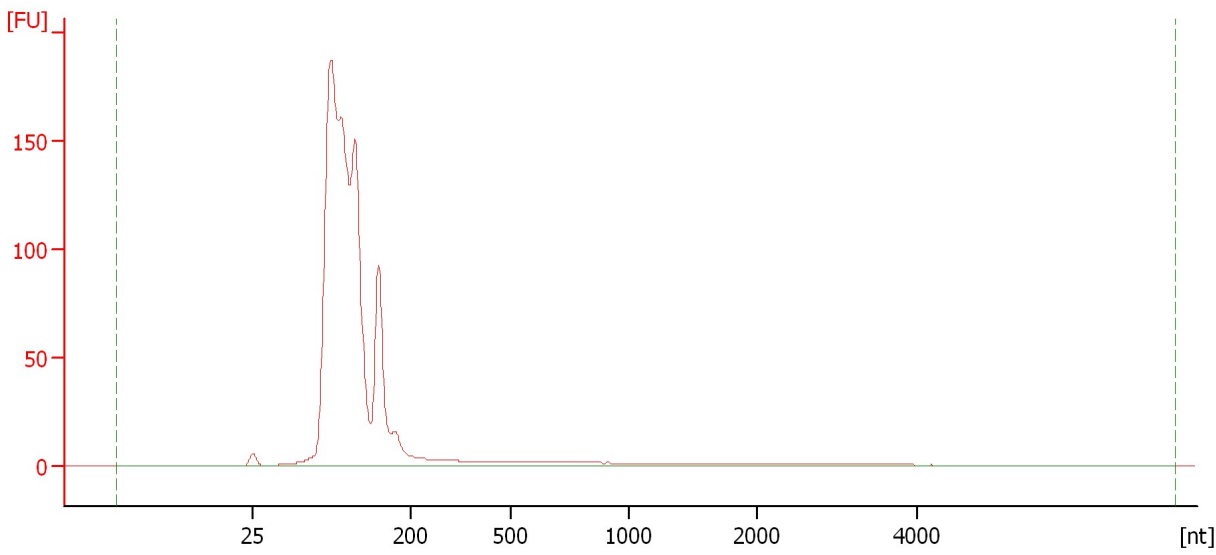
RNA Area:	1,560.6	RNA Integrity Number (RIN):	2.5 (B.02.08)
RNA Concentration:	920 ng/μl	Result Flagging Color:	
rRNA Ratio [28s / 18s]:	0.0	Result Flagging Label:	RIN: 2.50

Assay Class: Eukaryote Total RNA Nano
Data Path: C:\...ents and Settings\Bioanalyzer\2013-11-13\2013-11-13_002.xad

Created: 11/13/2013 3:41:13 PM
Modified: 11/13/2013 4:05:02 PM

Electropherogram Summary Continued ...

Sample 6



Overall Results for sample 6 : Sample 6

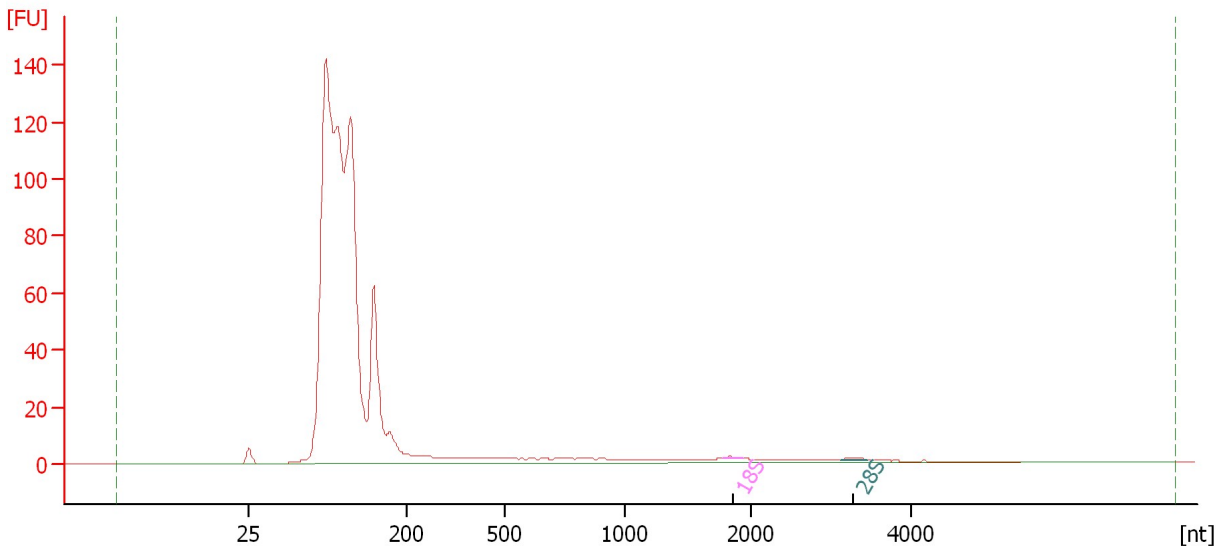
RNA Area:	1,219.9	RNA Integrity Number (RIN):	2.5 (B.02.08)
RNA Concentration:	719 ng/μl	Result Flagging Color:	
rRNA Ratio [28s / 18s]:	0.0	Result Flagging Label:	RIN: 2.50

Assay Class: Eukaryote Total RNA Nano
Data Path: C:\...ents and Settings\Bioanalyzer\2013-11-13\2013-11-13_002.xad

Created: 11/13/2013 3:41:13 PM
Modified: 11/13/2013 4:05:02 PM

Electropherogram Summary Continued ...

Sample 7



Overall Results for sample 7 : Sample 7

RNA Area: 931.2 RNA Integrity Number (RIN): 2.5 (B.02.08)
RNA Concentration: 549 ng/μl Result Flagging Color:
rRNA Ratio [28s / 18s]: 1.3 Result Flagging Label: RIN: 2.50

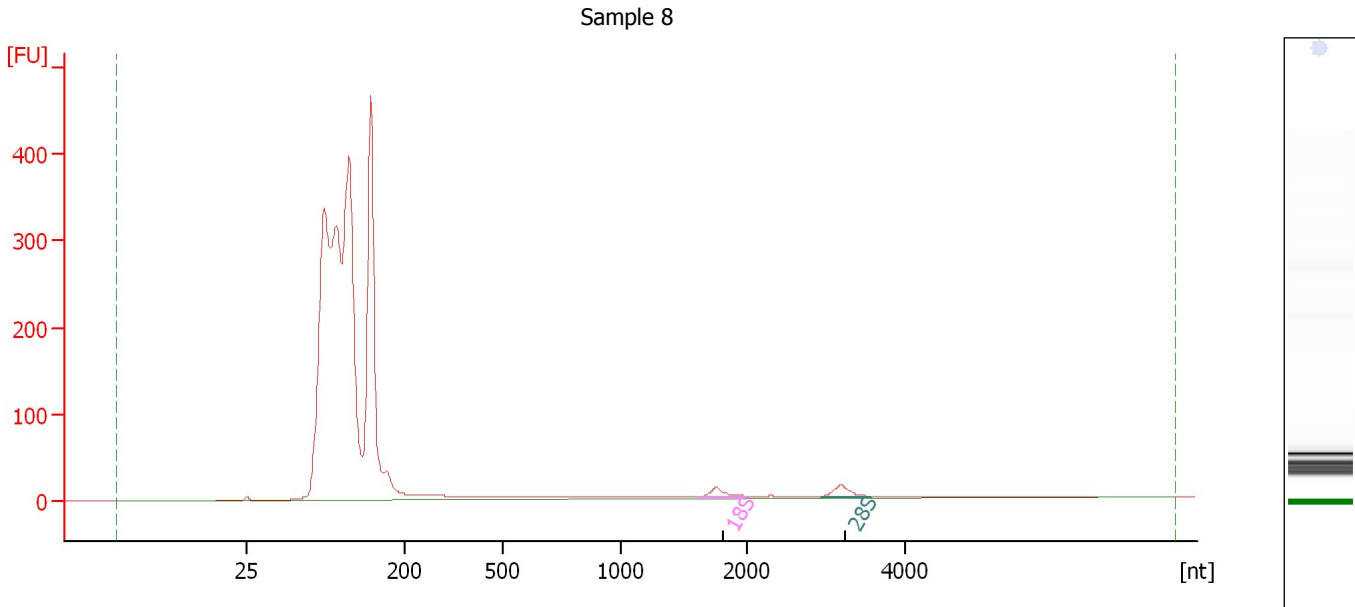
Fragment table for sample 7 : Sample 7

Name	Start Size [nt]	End Size [nt]	Area	% of total Area
18S	1,781	1,924	0.5	0.1
28S	3,129	3,452	0.7	0.1

Assay Class: Eukaryote Total RNA Nano
 Data Path: C:\...ents and Settings\Bioanalyzer\2013-11-13\2013-11-13_002.xad

Created: 11/13/2013 3:41:13 PM
 Modified: 11/13/2013 4:05:02 PM

Electropherogram Summary Continued ...



Overall Results for sample 8 : Sample 8

RNA Area:	2,767.2	RNA Integrity Number (RIN):	2.6 (B.02.08)
RNA Concentration:	1,632 ng/μl	Result Flagging Color:	
rRNA Ratio [28s / 18s]:	1.4	Result Flagging Label:	RIN: 2.60

Fragment table for sample 8 : Sample 8

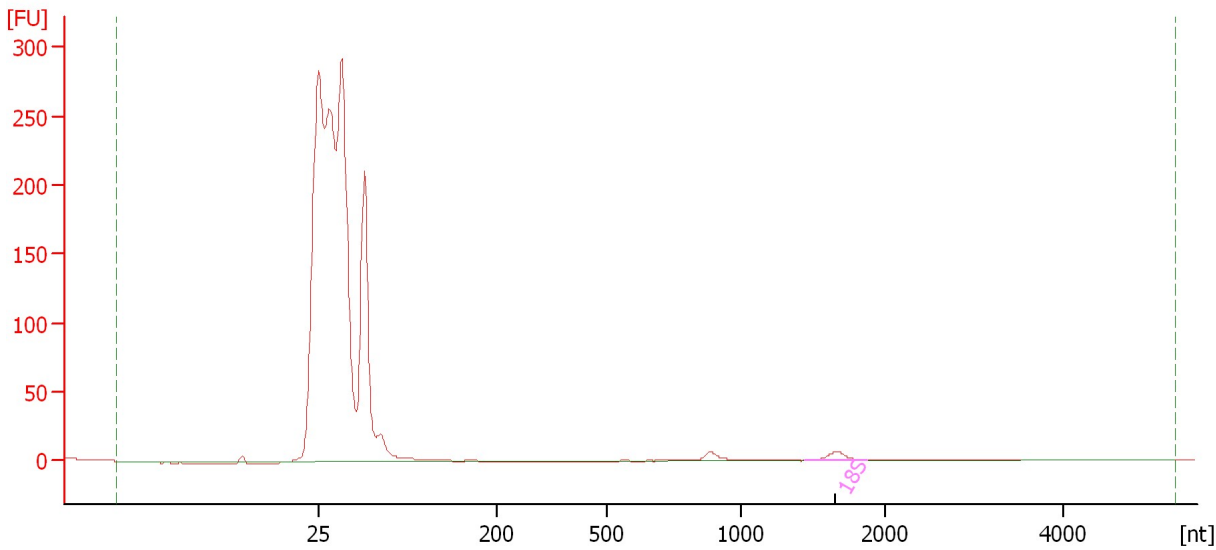
Name	Start Size [nt]	End Size [nt]	Area	% of total Area
18S	1,619	2,024	14.9	0.5
28S	2,929	3,564	20.7	0.7

Assay Class: Eukaryote Total RNA Nano
Data Path: C:\...ents and Settings\Bioanalyzer\2013-11-13\2013-11-13_002.xad

Created: 11/13/2013 3:41:13 PM
Modified: 11/13/2013 4:05:02 PM

Electropherogram Summary Continued ...

Sample 9



Overall Results for sample 9 : Sample 9

RNA Area:	923.0	RNA Integrity Number (RIN):	2.7 (B.02.08)
RNA Concentration:	544 ng/μl	Result Flagging Color:	
rRNA Ratio [28s / 18s]:	0.0	Result Flagging Label:	RIN: 2.70

Fragment table for sample 9 : Sample 9

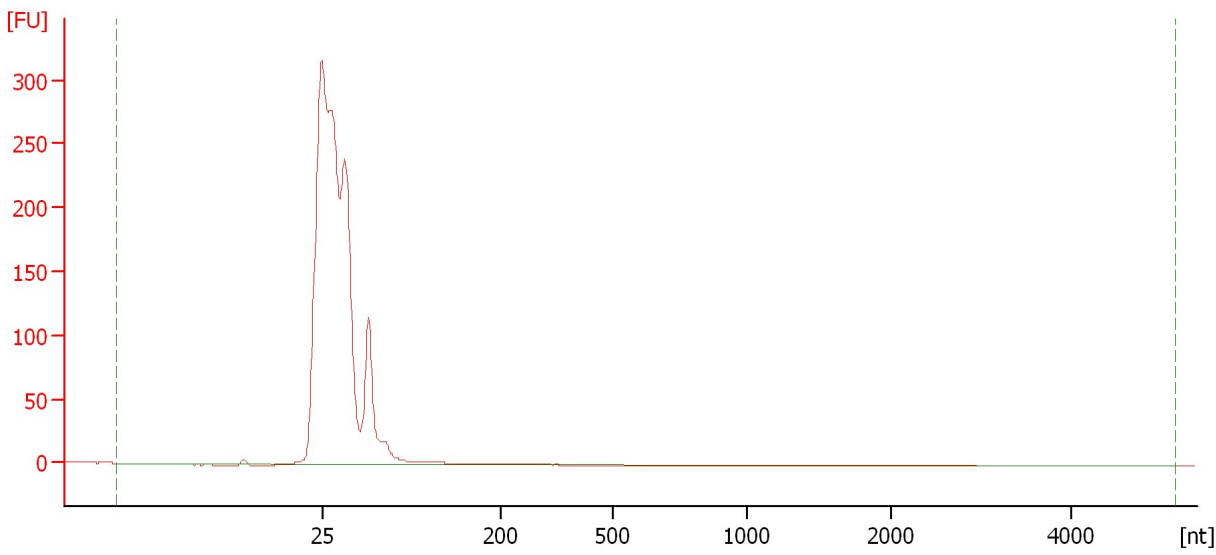
Name	Start Size [nt]	End Size [nt]	Area	% of total Area
18S	1,438	1,870	12.0	1.3

Assay Class: Eukaryote Total RNA Nano
Data Path: C:\...ents and Settings\Bioanalyzer\2013-11-13\2013-11-13_002.xad

Created: 11/13/2013 3:41:13 PM
Modified: 11/13/2013 4:05:02 PM

Electropherogram Summary Continued ...

Sample 10



Overall Results for sample 10 : Sample 10

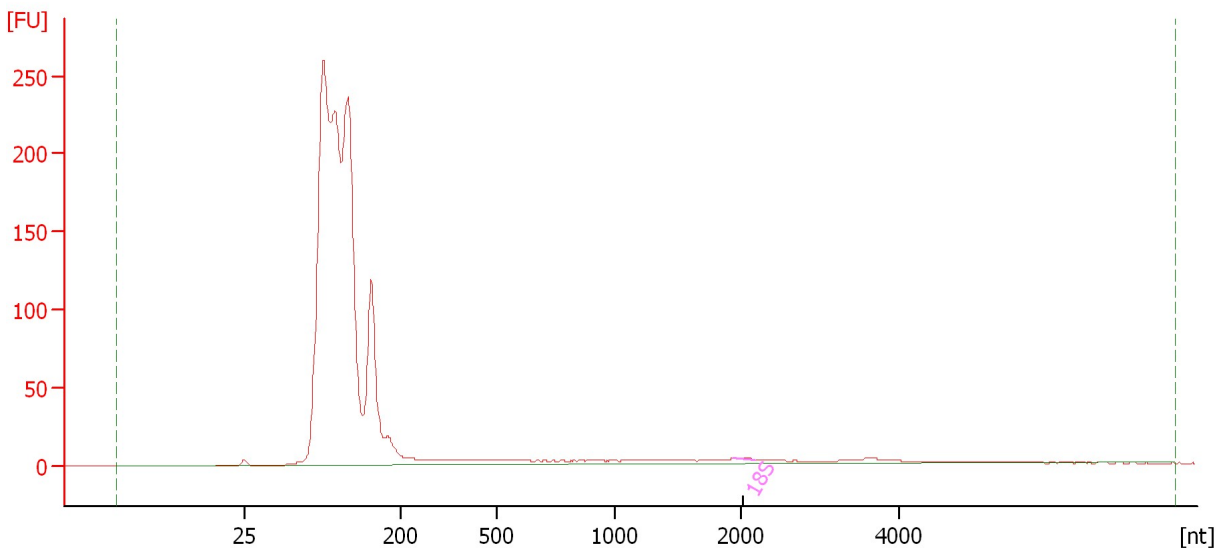
RNA Area:	216.3	RNA Integrity Number (RIN):	2.5 (B.02.08)
RNA Concentration:	128 ng/μl	Result Flagging Color:	
rRNA Ratio [28s / 18s]:	0.0	Result Flagging Label:	RIN: 2.50

Assay Class: Eukaryote Total RNA Nano
Data Path: C:\...ents and Settings\Bioanalyzer\2013-11-13\2013-11-13_002.xad

Created: 11/13/2013 3:41:13 PM
Modified: 11/13/2013 4:05:02 PM

Electropherogram Summary Continued ...

Sample 11



Overall Results for sample 11 : Sample 11

RNA Area:	1,802.6	RNA Integrity Number (RIN):	2.5 (B.02.08)
RNA Concentration:	1,063 ng/μl	Result Flagging Color:	
rRNA Ratio [28s / 18s]:	0.0	Result Flagging Label:	RIN: 2.50

Fragment table for sample 11 : Sample 11

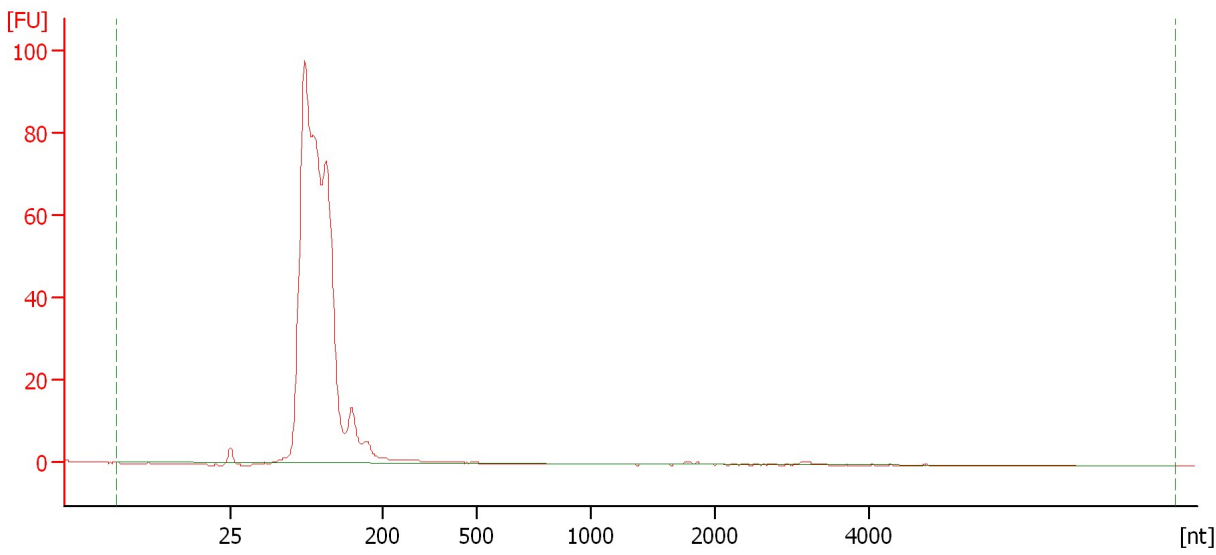
Name	Start Size [nt]	End Size [nt]	Area	% of total Area
18S	1,928	2,170	0.8	0.0

Assay Class: Eukaryote Total RNA Nano
Data Path: C:\...ents and Settings\Bioanalyzer\2013-11-13\2013-11-13_002.xad

Created: 11/13/2013 3:41:13 PM
Modified: 11/13/2013 4:05:02 PM

Electropherogram Summary Continued ...

Sample 12



Overall Results for sample 12 : Sample 12

RNA Area:	522.8	RNA Integrity Number (RIN):	2.5 (B.02.08)
RNA Concentration:	308 ng/μl	Result Flagging Color:	
rRNA Ratio [28s / 18s]:	0.0	Result Flagging Label:	RIN: 2.50

Assay Class: Eukaryote Total RNA Nano
Data Path: C:\...ents and Settings\Bioanalyzer\2013-11-13\2013-11-13_002.xad

Created: 11/13/2013 3:41:13 PM
Modified: 11/13/2013 4:05:02 PM

Gel Image

