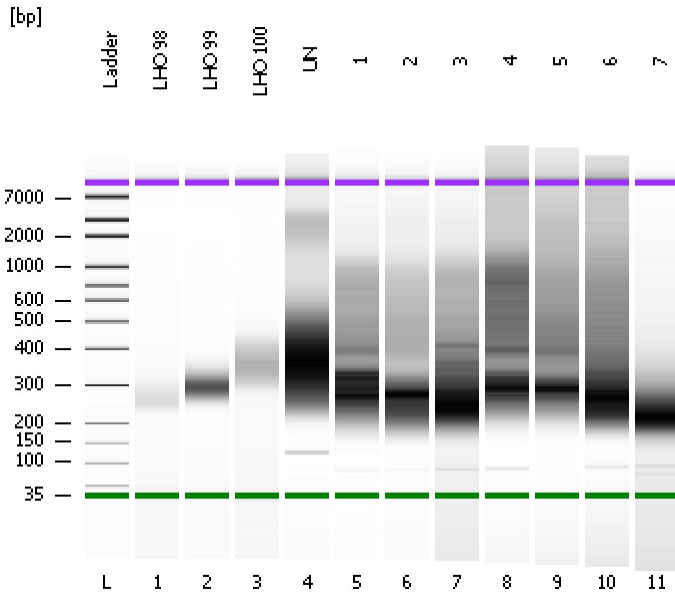


Assay Class: High Sensitivity DNA Assay
Data Path: C:\...ents and Settings\Bioanalyzer\2013-11-15\2013-11-15_001.xad

Created: 11/15/2013 10:26:18 AM
Modified: 11/15/2013 11:34:07 AM

Electrophoresis File Run Summary



Instrument Information:

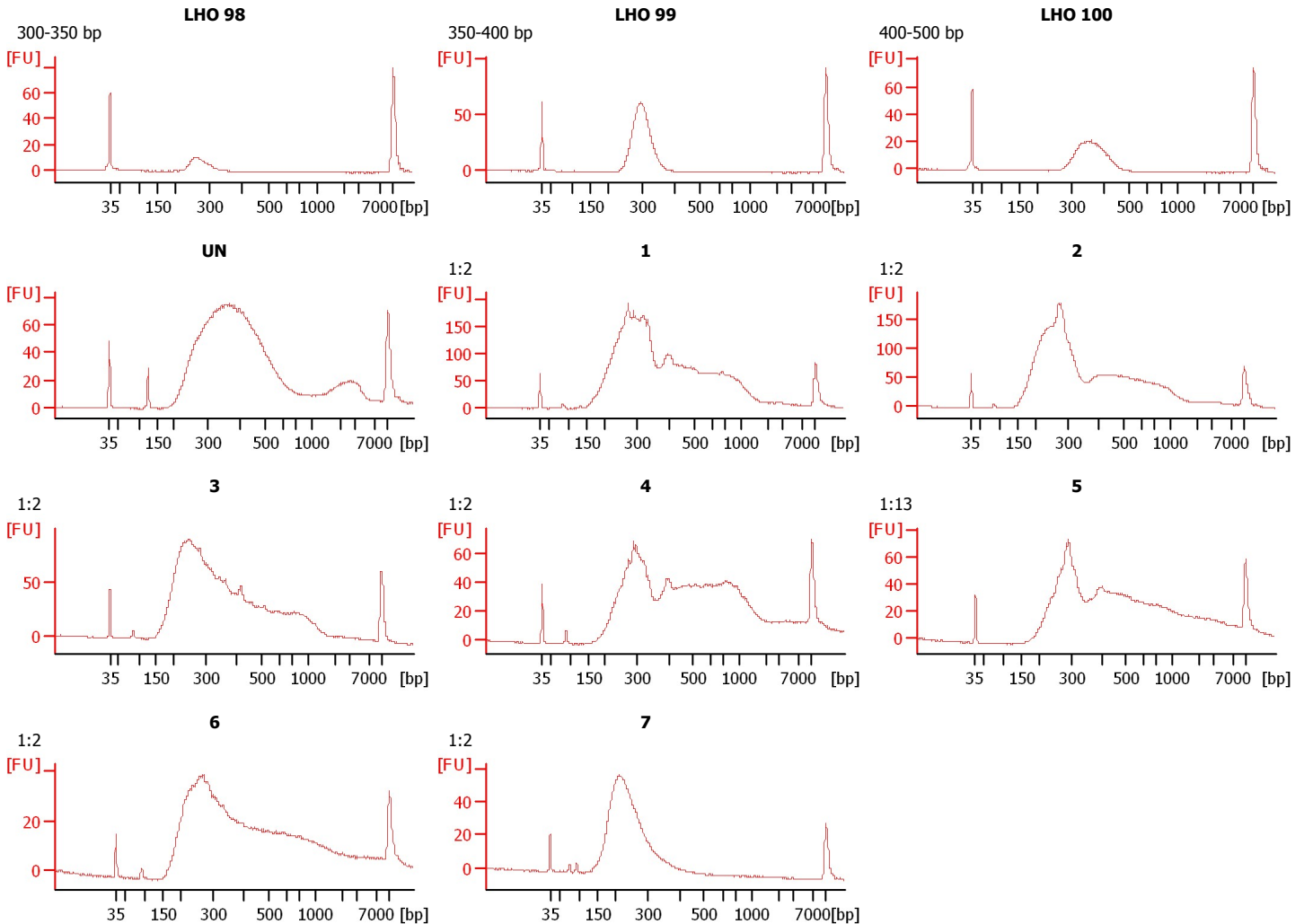
Instrument Name: DE13701086 Firmware: C.01.069
Serial#: DE13701086 Type: G2938B

Assay Information:

Assay Origin Path: C:\Program Files\Agilent\2100 bioanalyzer\2100 expert\assays\dsDNA\High Sensitivity DNA.xsy
Assay Class: High Sensitivity DNA Assay
Version: 1.03
Assay Comments: Copyright © 2003-2010 Agilent Technologies

Chip Information:

Chip Lot #: Reagent Kit Lot #: Chip Comments:



Assay Class: High Sensitivity DNA Assay
 Data Path: C:\...ents and Settings\Bioanalyzer\2013-11-15\2013-11-15_001.xad

Created: 11/15/2013 10:26:18 AM
 Modified: 11/15/2013 11:34:07 AM

Electrophoresis File Run Summary (Chip Summary)

Sample Name	Sample Comment	Rest. Digest	Status	Observation	Result Label	Result Color
LHO 98	300-350 bp	<input type="checkbox"/>	✓			
LHO 99	350-400 bp	<input type="checkbox"/>	✓			
LHO 100	400-500 bp	<input type="checkbox"/>	✓			
UN		<input type="checkbox"/>	✓			
1	1:2	<input type="checkbox"/>	✓			
2	1:2	<input type="checkbox"/>	✓			
3	1:2	<input type="checkbox"/>	✓			
4	1:2	<input type="checkbox"/>	✓			
5	1:13	<input type="checkbox"/>	✓			
6	1:2	<input type="checkbox"/>	✓			
7	1:2	<input type="checkbox"/>	✓			
Ladder		<input type="checkbox"/>	✓			

Chip Lot #

Reagent Kit Lot #

Chip Comments :

Assay Class: High Sensitivity DNA Assay
Data Path: C:\...ents and Settings\Bioanalyzer\2013-11-15\2013-11-15_001.xad

Created: 11/15/2013 10:26:18 AM
Modified: 11/15/2013 11:34:07 AM

Electrophoresis Assay Details

General Analysis Settings

Number of Available Sample and Ladder Wells (Max.) : 12
Minimum Visible Range [s] : 32
Maximum Visible Range [s] : 138
Start Analysis Time Range [s] : 33
End Analysis Time Range [s] : 137.5
Ladder Concentration [pg/μl] : 1950
Uses Standard Area for Ladder Fragments
Lower Marker Concentration [pg/μl] : 125
Upper Marker Concentration [pg/μl] : 75
Used Upper Marker for Quantitation
Standard Curve Fit is Point to Point
Show Data Aligned to Lower and Upper Marker

Integrator Settings

Integration Start Time [s] : 33.05
Integration End Time [s] : 137
Slope Threshold : 0.8
Height Threshold [FU] : 5
Area Threshold : 0.1
Width Threshold [s] : 0.6
Baseline Plateau [s] : 0.5

Filter Settings

Filter Width [s] : 0.5
Polynomial Order : 4

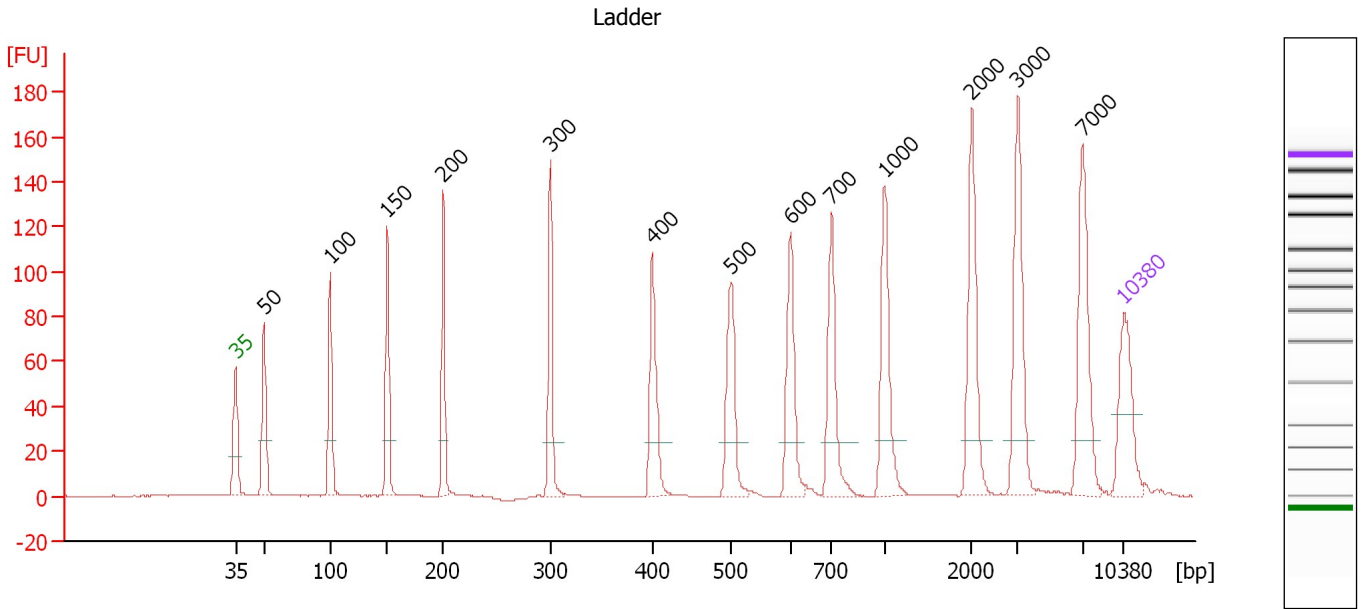
Ladder

Ladder Peak	Size	Area
1	35	160
2	50	210
3	100	208
4	150	221
5	200	242
6	300	270
7	400	305
8	500	306
9	600	336
10	700	321
11	1000	366
12	2000	413
13	3000	411
14	7000	400
15	10380	214

Assay Class: High Sensitivity DNA Assay
 Data Path: C:\...ents and Settings\Bioanalyzer\2013-11-15\2013-11-15_001.xad

Created: 11/15/2013 10:26:18 AM
 Modified: 11/15/2013 11:34:07 AM

Electropherogram Summary



Overall Results for Ladder

Noise: 0.1

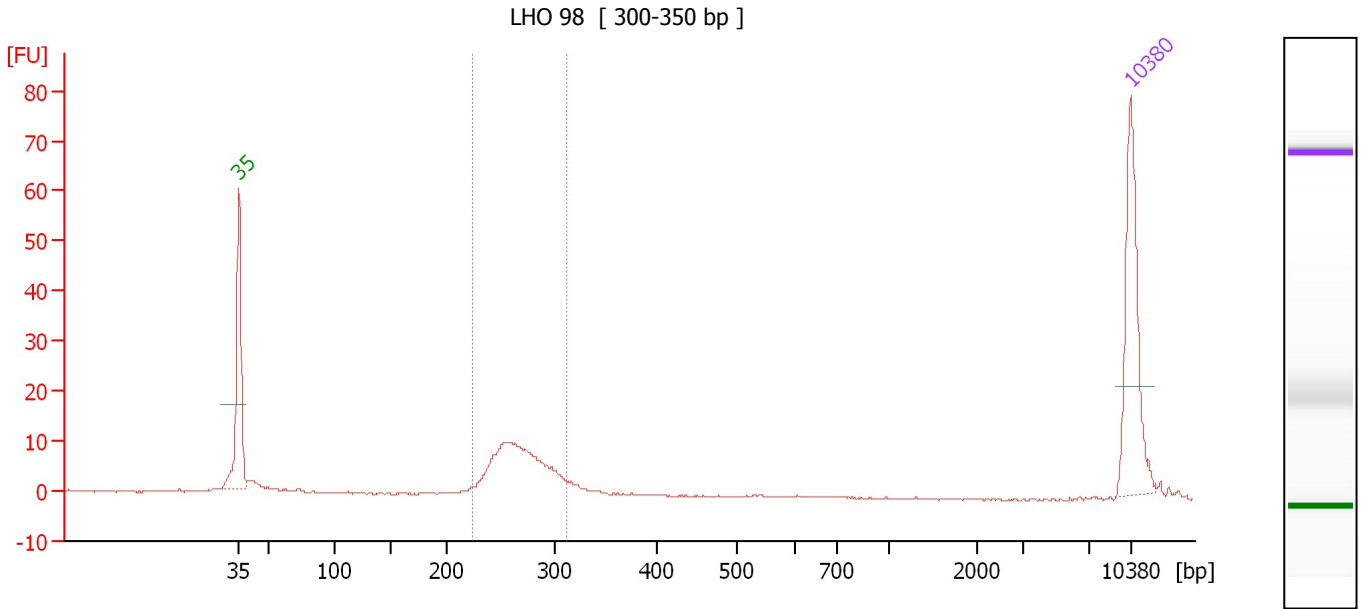
Peak table for Ladder

Peak	Aligned Migration Time [s]	Size [bp]	Conc. [pg/μl]	Molarity [pmol/l]	Observations
1	43.00	35	125.00	5,411.3	Lower Marker
2	45.27	50	150.00	4,545.5	Ladder Peak
3	50.48	100	150.00	2,272.7	Ladder Peak
4	54.97	150	150.00	1,515.2	Ladder Peak
5	59.39	200	150.00	1,136.4	Ladder Peak
6	67.83	300	150.00	757.6	Ladder Peak
7	75.82	400	150.00	568.2	Ladder Peak
8	82.08	500	150.00	454.5	Ladder Peak
9	86.74	600	150.00	378.8	Ladder Peak
10	89.97	700	150.00	324.7	Ladder Peak
11	94.13	1,000	150.00	227.3	Ladder Peak
12	101.03	2,000	150.00	113.6	Ladder Peak
13	104.64	3,000	150.00	75.8	Ladder Peak
14	109.72	7,000	150.00	32.5	Ladder Peak
15	113.00	10,380	75.00	10.9	Upper Marker

Assay Class: High Sensitivity DNA Assay
 Data Path: C:\...ents and Settings\Bioanalyzer\2013-11-15\2013-11-15_001.xad

Created: 11/15/2013 10:26:18 AM
 Modified: 11/15/2013 11:34:07 AM

Electropherogram Summary Continued ...



Overall Results for sample 1 : LHO 98

Number of peaks found: 0 Corr. Area 1: 75.6
 Noise: 0.2

Peak table for sample 1 : LHO 98

Peak	Aligned Migration Time [s]	Size [bp]	Conc. [pg/μl]	Molarity [pmol/l]	Observations
1	43.00	35	125.00	5,411.3	Lower Marker
2	113.00	10,380	75.00	10.9	Upper Marker

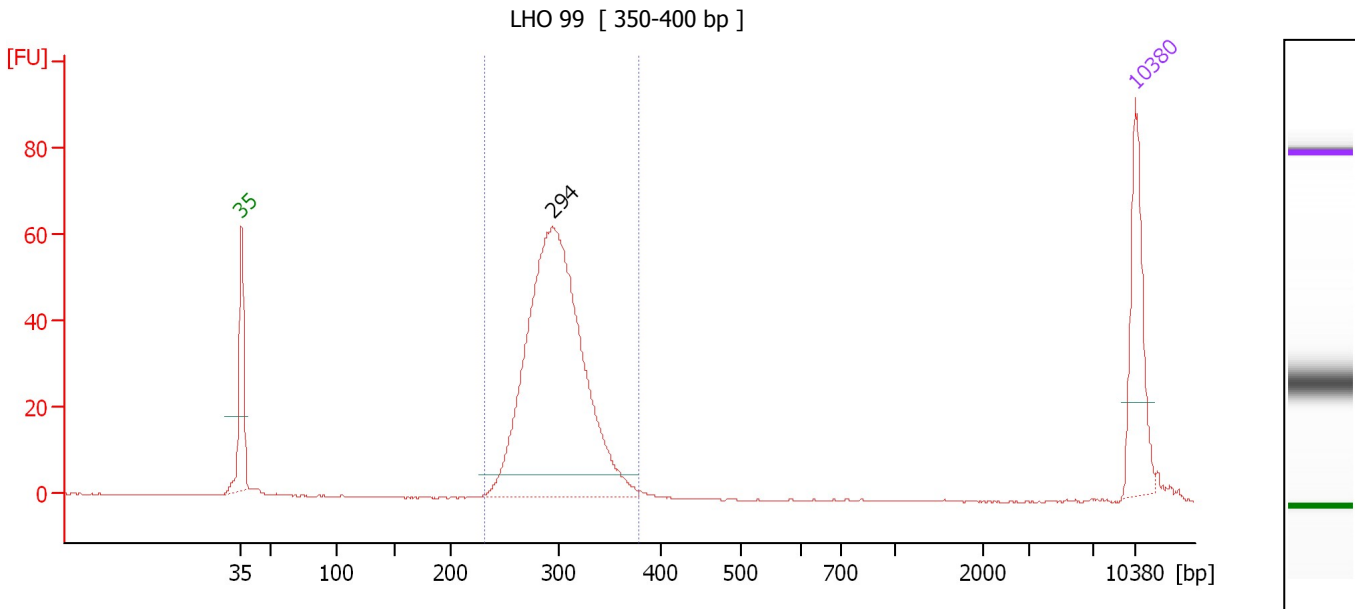
Region table for sample 1 : LHO 98

From [bp]	To [bp]	Average Size [bp]	Molarity [pmol/l]	Conc. [pg/μl]	Co Corr. lor Area	% of Total	Size distribution in CV [%]
223	311	267	685.1	120.26	75.6	81	7.6

Assay Class: High Sensitivity DNA Assay
 Data Path: C:\...ents and Settings\Bioanalyzer\2013-11-15\2013-11-15_001.xad

Created: 11/15/2013 10:26:18 AM
 Modified: 11/15/2013 11:34:07 AM

Electropherogram Summary Continued ...



Overall Results for sample 2 : LHO 99

Number of peaks found: 1 Corr. Area 1: 488.2
 Noise: 0.2

Peak table for sample 2 : LHO 99

Peak	Aligned Migration Time [s]	Size [bp]	Conc. [pg/μl]	Molarity [pmol/l]	Observations
1	43.00	35	125.00	5,411.3	Lower Marker
2	67.29	294	666.56	3,439.6	
3	113.00	10,380	75.00	10.9	Upper Marker

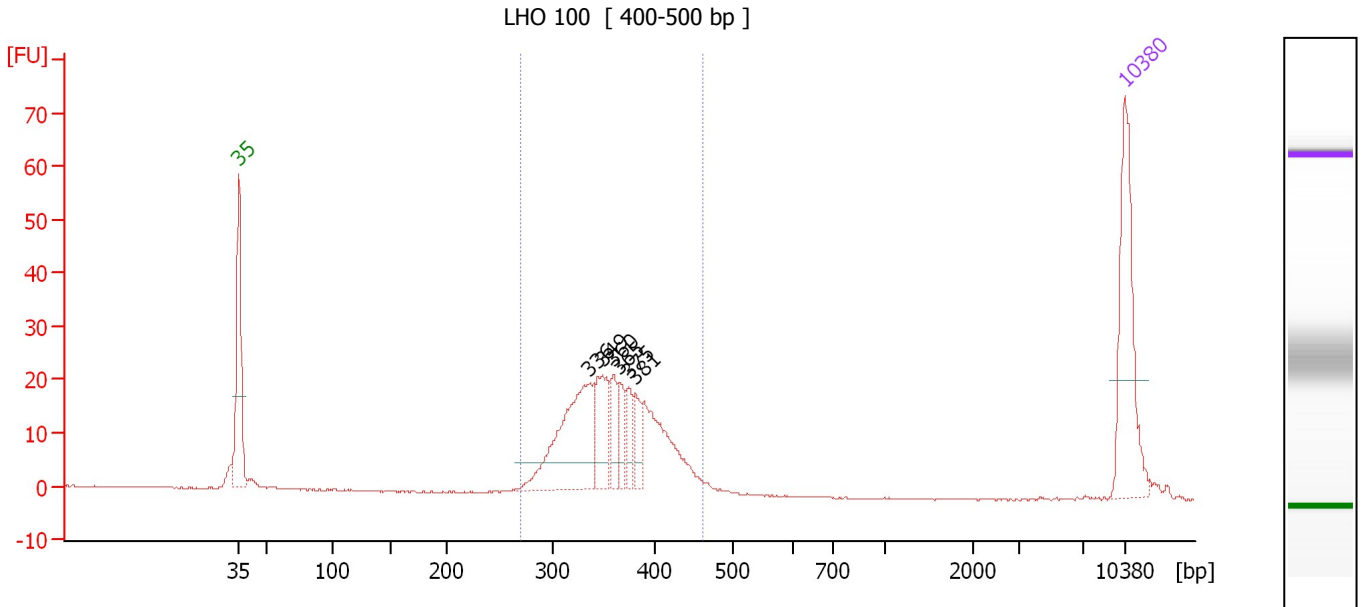
Region table for sample 2 : LHO 99

From [bp]	To [bp]	Average Size [bp]	Molarity [pmol/l]	Conc. [pg/μl]	Co Corr. lor Area	% of Total	Size distribution in CV [%]
231	379	298	3,329.0	650.45	488.2	98	8.5

Assay Class: High Sensitivity DNA Assay
 Data Path: C:\...ents and Settings\Bioanalyzer\2013-11-15\2013-11-15_001.xad

Created: 11/15/2013 10:26:18 AM
 Modified: 11/15/2013 11:34:07 AM

Electropherogram Summary Continued ...



Overall Results for sample 3 : LHO 100

Number of peaks found: 6 Corr. Area 1: 261.9
 Noise: 0.2

Peak table for sample 3 : LHO 100

Peak	Aligned Migration Time [s]	Size [bp]	Conc. [pg/μl]	Molarity [pmol/l]	Observations
1	43.00	35	125.00	5,411.3	Lower Marker
2	70.73	336	126.79	571.2	
3	71.74	349	49.29	214.0	
4	72.63	360	23.87	100.5	
5	73.05	365	20.67	85.7	
6	73.81	375	19.28	77.9	
7	74.31	381	20.22	80.4	
8	113.00	10,380	75.00	10.9	Upper Marker

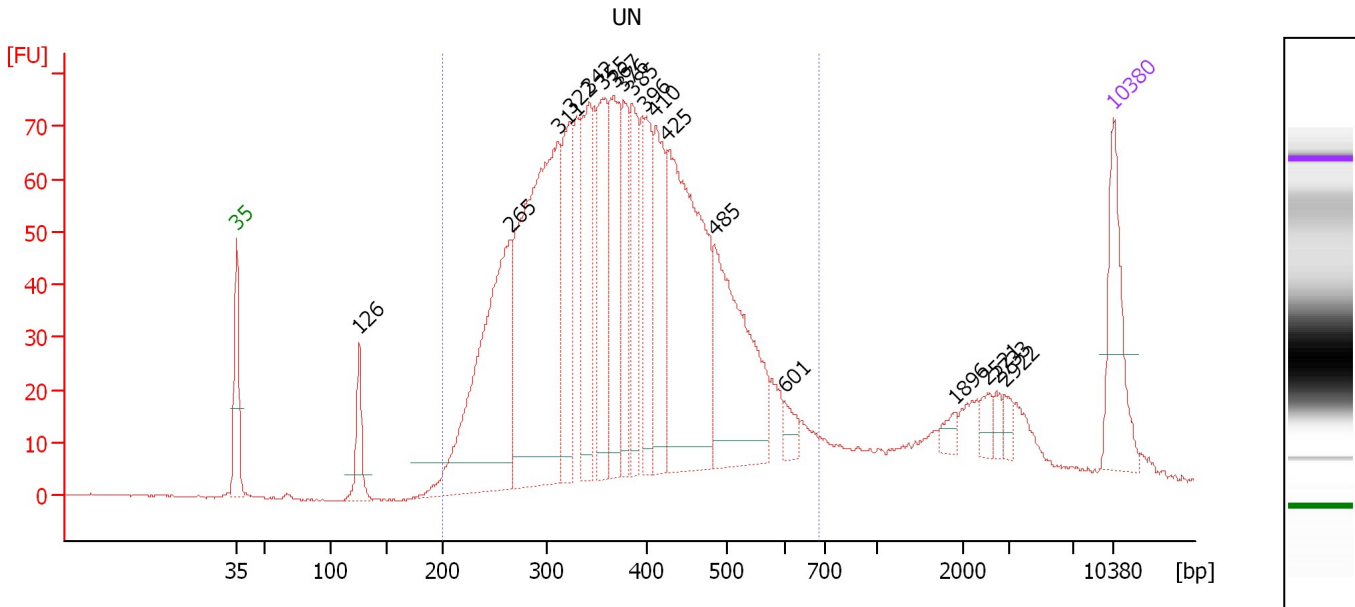
Region table for sample 3 : LHO 100

From [bp]	To [bp]	Average Size [bp]	Molarity [pmol/l]	Conc. [pg/μl]	Co Corr. lor Area	% of Total	Size distribution in CV [%]
269	461	360	1,548.0	362.97	261.9	94	11.0

Assay Class: High Sensitivity DNA Assay
 Data Path: C:\...ents and Settings\Bioanalyzer\2013-11-15\2013-11-15_001.xad

Created: 11/15/2013 10:26:18 AM
 Modified: 11/15/2013 11:34:07 AM

Electropherogram Summary Continued ...



Overall Results for sample 4 : UN

Number of peaks found: 18 Corr. Area 1: 1,932.1
 Noise: 0.1

Peak table for sample 4 : UN

Peak	Aligned Migration Time [s]	Size [bp]	Conc. [pg/μl]	Molarity [pmol/l]	Observations
1	43.00	35	125.00	5,411.3	Lower Marker
2	52.79	126	60.11	724.4	
3	64.84	265	389.99	2,233.1	
4	68.68	311	526.20	2,567.2	
5	69.61	322	151.31	711.3	
6	71.19	342	157.93	699.6	
7	72.21	355	143.47	612.6	
8	73.15	367	152.15	628.9	
9	73.91	376	91.73	369.5	
10	74.59	385	105.70	416.3	
11	75.53	396	99.61	380.7	
12	76.47	410	123.98	457.7	
13	77.36	425	364.11	1,299.0	
14	81.15	485	234.89	733.5	
15	86.77	601	18.03	45.5	
16	100.31	1,896	11.13	8.9	
17	102.91	2,521	13.03	7.8	
18	103.68	2,733	9.07	5.0	
19	104.36	2,922	10.38	5.4	
20	113.00	10,380	75.00	10.9	Upper Marker

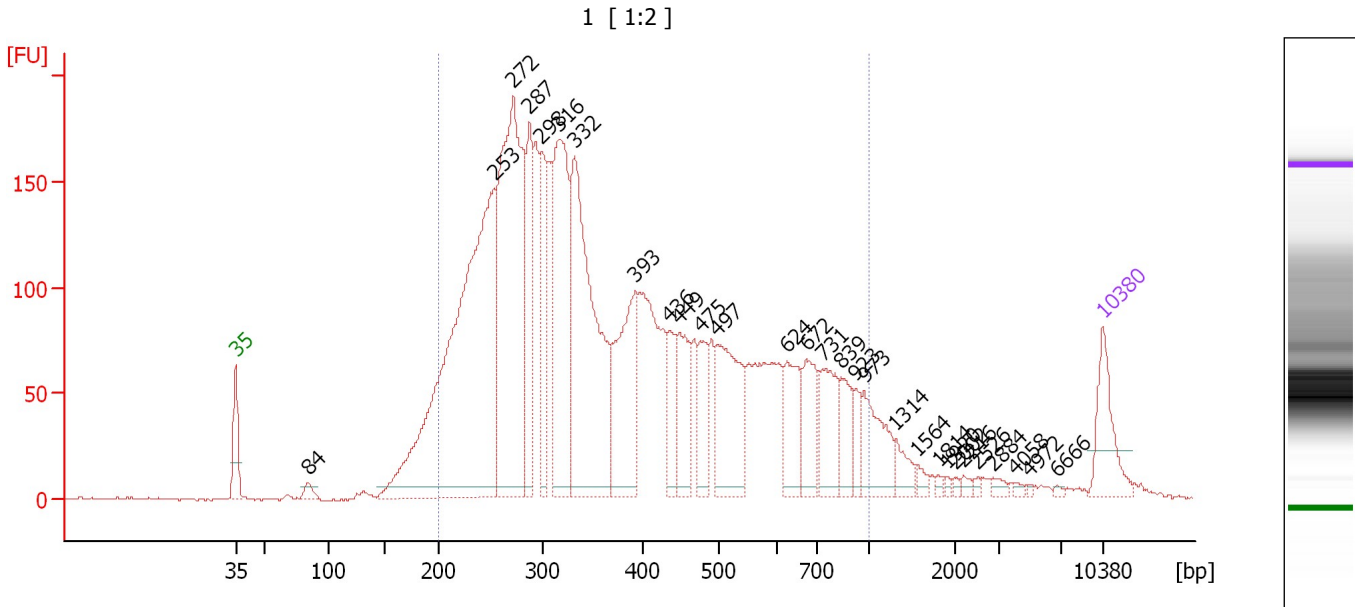
Region table for sample 4 : UN

From [bp]	To [bp]	Average Size [bp]	Molarity [pmol/l]	Conc. [pg/μl]	Co Corr. lor Area	% of Total	Size distribution in CV [%]
200	686	381	12,687.5	2,919.18	1,932.1	89	25.1

Assay Class: High Sensitivity DNA Assay
 Data Path: C:\...ents and Settings\Bioanalyzer\2013-11-15\2013-11-15_001.xad

Created: 11/15/2013 10:26:18 AM
 Modified: 11/15/2013 11:34:07 AM

Electropherogram Summary Continued ...



Overall Results for sample 5 : 1

Number of peaks found: 29 Corr. Area 1: 4,607.7
 Noise: 0.3

Peak table for sample 5 : 1


Peak	Aligned Migration Time [s]	Size [bp]	Conc. [pg/μl]	Molarity [pmol/l]	Observations
1	43.00	35	125.00	5,411.3	Lower Marker
2	48.81	84	17.49	315.4	
3	63.88	253	1,184.49	7,088.0	
4	65.43	272	760.36	4,242.5	
5	66.72	287	201.43	1,064.0	
6	67.62	298	174.10	886.5	
7	69.13	316	397.87	1,906.0	
8	70.42	332	582.76	2,655.9	
9	75.29	393	252.26	971.6	
10	78.04	436	82.45	286.8	
11	78.86	449	123.28	416.3	
12	80.50	475	83.42	266.2	
13	81.92	497	211.07	642.9	
14	87.51	624	98.66	239.6	
15	89.06	672	91.14	205.5	
16	90.40	731	109.31	226.7	
17	91.91	839	60.31	108.9	
18	93.07	923	32.01	52.5	
19	93.76	973	96.89	150.9	
20	96.30	1,314	29.82	34.4	
21	98.02	1,564	11.47	11.1	
22	99.74	1,814	5.15	4.3	
23	100.47	1,920	4.13	3.3	
24	101.03	2,002	4.49	3.4	
25	101.81	2,216	6.95	4.8	

Assay Class: High Sensitivity DNA Assay
 Data Path: C:\...ents and Settings\Bioanalyzer\2013-11-15\2013-11-15_001.xad


Created: 11/15/2013 10:26:18 AM
 Modified: 11/15/2013 11:34:07 AM

Electropherogram Summary Continued ...

... Peak table for sample 5 : 1

Peak	Aligned Migration Time [s]	Size [bp]	Conc. [pg/ μ l]	Molarity [pmol/l]	Observations
26	102.93	2,526	4.39	2.6	
27	104.22	2,884	8.74	4.6	
28	105.98	4,058	5.08	1.9	
29	107.15	4,972	2.37	0.7	
30	109.30	6,666	3.08	0.7	
31	 113.00	10,380	75.00	10.9	Upper Marker

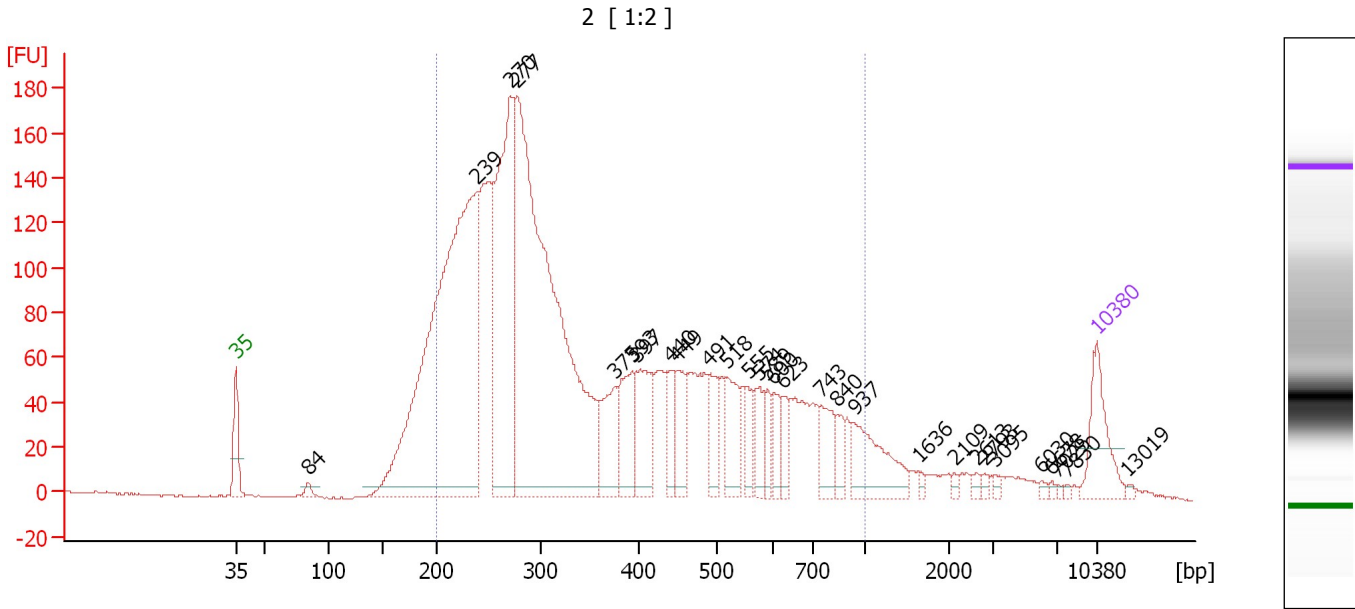
Region table for sample 5 : 1

From [bp]	To [bp]	Average Size [bp]	Molarity [pmol/l]	Conc. [pg/ μ l]	Co Corr. for Area	% of Total	Size distribution in CV [%]
200	1,000	402	23,802.5	5,191.23	 4,607.7	91	42.4

Assay Class: High Sensitivity DNA Assay
 Data Path: C:\...ents and Settings\Bioanalyzer\2013-11-15\2013-11-15_001.xad

Created: 11/15/2013 10:26:18 AM
 Modified: 11/15/2013 11:34:07 AM

Electropherogram Summary Continued ...



Overall Results for sample 6 : 2

Number of peaks found: 29 Corr. Area 1: 3,590.1
 Noise: 0.5

Peak table for sample 6 : 2

Peak	Aligned Migration Time [s]	Size [bp]	Conc. [pg/μl]	Molarity [pmol/l]	Observations
1	43.00	35	125.00	5,411.3	Lower Marker
2	48.86	84	14.39	258.3	
3	62.65	239	1,282.78	8,145.7	
4	65.29	270	566.24	3,178.4	
5	65.86	277	1,289.13	7,061.4	
6	73.79	375	110.15	445.4	
7	75.22	393	105.25	406.2	
8	75.57	397	127.69	487.4	
9	78.30	440	52.80	181.9	
10	78.87	449	69.37	234.2	
11	81.51	491	61.71	190.4	
12	82.90	518	83.31	243.8	
13	84.64	555	37.22	101.6	
14	85.55	574	46.04	121.4	
15	86.24	589	31.87	82.0	
16	86.72	600	37.65	95.2	
17	87.50	623	32.08	78.0	
18	90.58	743	59.19	120.6	
19	91.92	840	27.76	50.1	
20	93.27	937	111.03	179.5	
21	98.51	1,636	5.94	5.5	
22	101.42	2,109	4.87	3.5	
23	103.24	2,613	7.43	4.3	
24	103.89	2,793	4.73	2.6	
25	104.76	3,095	5.23	2.6	

Assay Class: High Sensitivity DNA Assay
 Data Path: C:\...ents and Settings\Bioanalyzer\2013-11-15\2013-11-15_001.xad

Created: 11/15/2013 10:26:18 AM
 Modified: 11/15/2013 11:34:07 AM

Electropherogram Summary Continued ...

... Peak table for sample 6 : 2

Peak	Aligned Migration Time [s]	Size [bp]	Conc. [pg/ μ l]	Molarity [pmol/l]	Observations
26	108.49	6,030	4.57	1.1	
27	109.31	6,678	2.94	0.7	
28	109.75	7,025	2.51	0.5	
29	110.53	7,830	2.59	0.5	
30	113.00	10,380	75.00	10.9	Upper Marker
31	115.56	13,019	0.00	0.0	

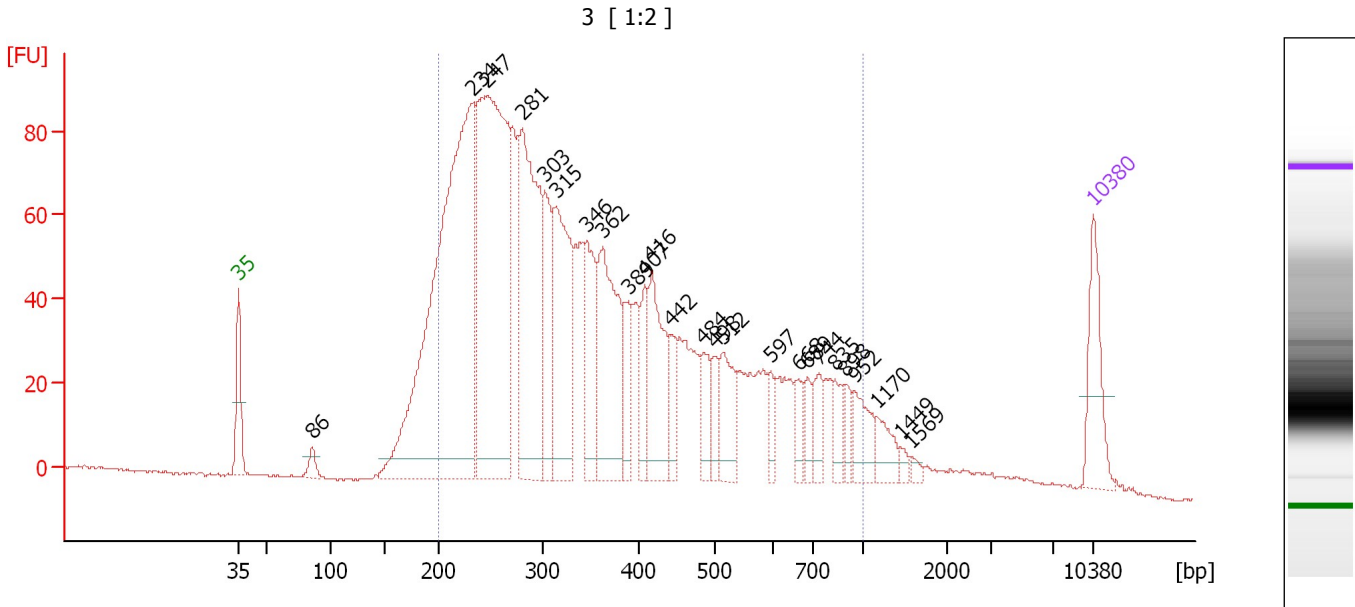
Region table for sample 6 : 2

From [bp]	To [bp]	Average Size [bp]	Molarity [pmol/l]	Conc. [pg/ μ l]	Co Corr. lor Area	% of Total	Size distribution in CV [%]
200	1,000	382	21,319.5	4,363.58	 3,590.1	87	44.6

Assay Class: High Sensitivity DNA Assay
 Data Path: C:\...ents and Settings\Bioanalyzer\2013-11-15\2013-11-15_001.xad

Created: 11/15/2013 10:26:18 AM
 Modified: 11/15/2013 11:34:07 AM

Electropherogram Summary Continued ...



Overall Results for sample 7 : 3

Number of peaks found: 25 Corr. Area 1: 2,360.4
 Noise: 0.3

Peak table for sample 7 : 3

Peak	Aligned Migration Time [s]	Size [bp]	Conc. [pg/μl]	Molarity [pmol/l]	Observations
1	43.00	35	125.00	5,411.3	Lower Marker
2	49.03	86	23.23	408.8	
3	62.23	234	1,066.66	6,917.8	
4	63.36	247	765.63	4,695.2	
5	66.25	281	439.69	2,368.9	
6	68.08	303	134.17	670.7	
7	69.00	315	266.32	1,282.6	
8	71.49	346	134.35	588.6	
9	72.80	362	234.96	982.8	
10	74.90	389	69.68	271.7	
11	76.25	407	62.76	233.6	
12	76.82	416	149.08	542.9	
13	78.44	442	47.18	161.8	
14	81.10	484	44.99	140.7	
15	81.98	498	40.97	124.5	
16	82.63	512	77.95	230.7	
17	86.61	597	24.89	63.1	
18	88.92	668	27.32	62.0	
19	89.62	689	25.56	56.2	
20	90.58	744	38.40	78.2	
21	91.85	835	28.05	50.9	
22	92.73	898	21.38	36.1	
23	93.47	952	52.26	83.2	
24	95.30	1,170	34.59	44.8	
25	97.23	1,449	7.57	7.9	

Assay Class: High Sensitivity DNA Assay
Data Path: C:\...ents and Settings\Bioanalyzer\2013-11-15\2013-11-15_001.xad

Created: 11/15/2013 10:26:18 AM
Modified: 11/15/2013 11:34:07 AM

Electropherogram Summary Continued ...**... Peak table for sample 7 : 3**

Peak	Aligned Migration Time [s]	Size [bp]	Conc. [pg/ μ l]	Molarity [pmol/l]	Observations
26	98.06	1,569	7.80	7.5	
27	113.00	10,380	75.00	10.9	Upper Marker

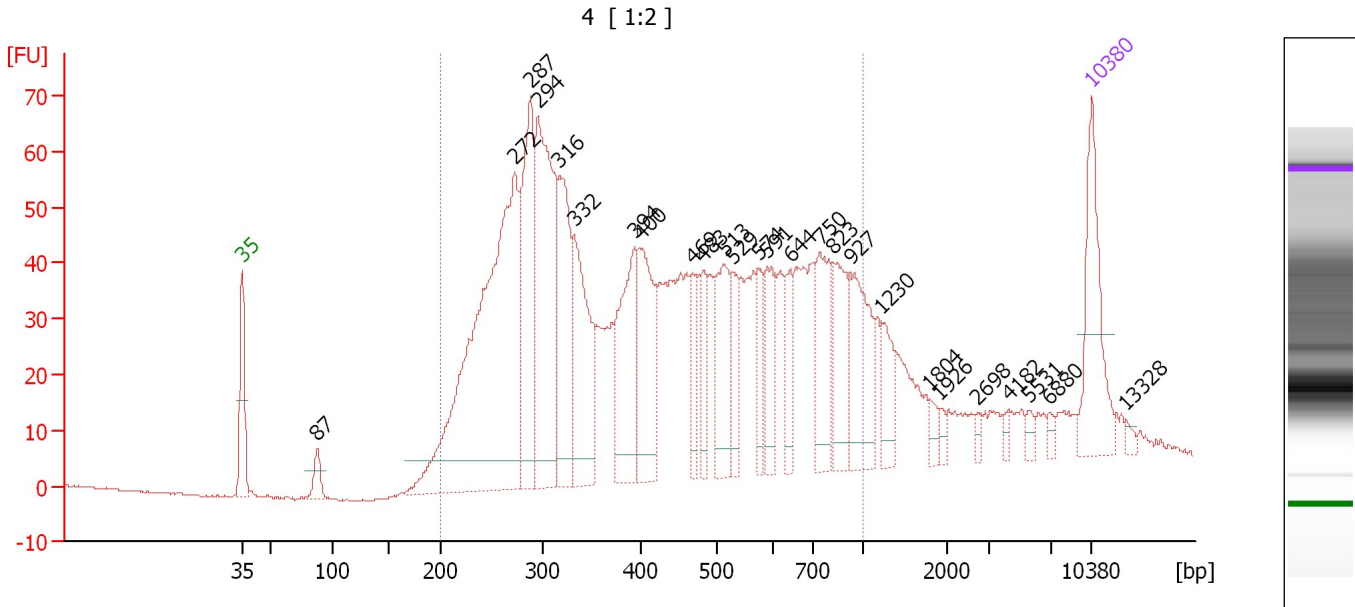
Region table for sample 7 : 3

From [bp]	To [bp]	Average Size [bp]	Molarity [pmol/l]	Conc. [pg/ μ l]	Co Corr. lor Area	% of Total	Size distribution in CV [%]
200	1,000	382	20,287.9	4,186.43	2,360.4	89	44.0

Assay Class: High Sensitivity DNA Assay
 Data Path: C:\...ents and Settings\Bioanalyzer\2013-11-15\2013-11-15_001.xad

Created: 11/15/2013 10:26:18 AM
 Modified: 11/15/2013 11:34:07 AM

Electropherogram Summary Continued ...



Overall Results for sample 8 : 4

Number of peaks found: 26 Corr. Area 1: 1,664.1
 Noise: 0.2

Peak table for sample 8 : 4

Peak	Aligned Migration Time [s]	Size [bp]	Conc. [pg/μl]	Molarity [pmol/l]	Observations
1	43.00	35	125.00	5,411.3	Lower Marker
2	49.16	87	23.77	412.6	
3	65.47	272	564.42	3,143.9	
4	66.74	287	182.67	964.0	
5	67.36	294	269.91	1,389.1	
6	69.12	316	138.57	664.2	
7	70.35	332	151.25	691.2	
8	75.32	394	125.93	484.6	
9	75.80	400	113.89	431.6	
10	80.15	469	42.00	135.6	
11	80.99	483	39.07	122.7	
12	82.70	513	78.51	231.7	
13	83.41	529	41.39	118.7	
14	85.52	574	34.33	90.7	
15	86.31	591	47.62	122.1	
16	88.16	644	36.99	87.0	
17	90.66	750	71.99	145.5	
18	91.67	823	65.78	121.2	
19	93.13	927	88.47	144.6	
20	95.72	1,230	33.43	41.2	
21	99.68	1,804	8.79	7.4	
22	100.51	1,926	5.82	4.6	
23	103.55	2,698	5.06	2.8	
24	106.14	4,182	4.90	1.8	
25	107.86	5,531	6.13	1.7	

Assay Class: High Sensitivity DNA Assay
Data Path: C:\...ents and Settings\Bioanalyzer\2013-11-15\2013-11-15_001.xad

Created: 11/15/2013 10:26:18 AM
Modified: 11/15/2013 11:34:07 AM

Electropherogram Summary Continued ...**... Peak table for sample 8 : 4**

Peak	Aligned Migration Time [s]	Size [bp]	Conc. [pg/ μ l]	Molarity [pmol/l]	Observations
26	109.57	6,880	5.13	1.1	
27	113.00	10,380	75.00	10.9	Upper Marker
28	115.86	13,328	0.00	0.0	

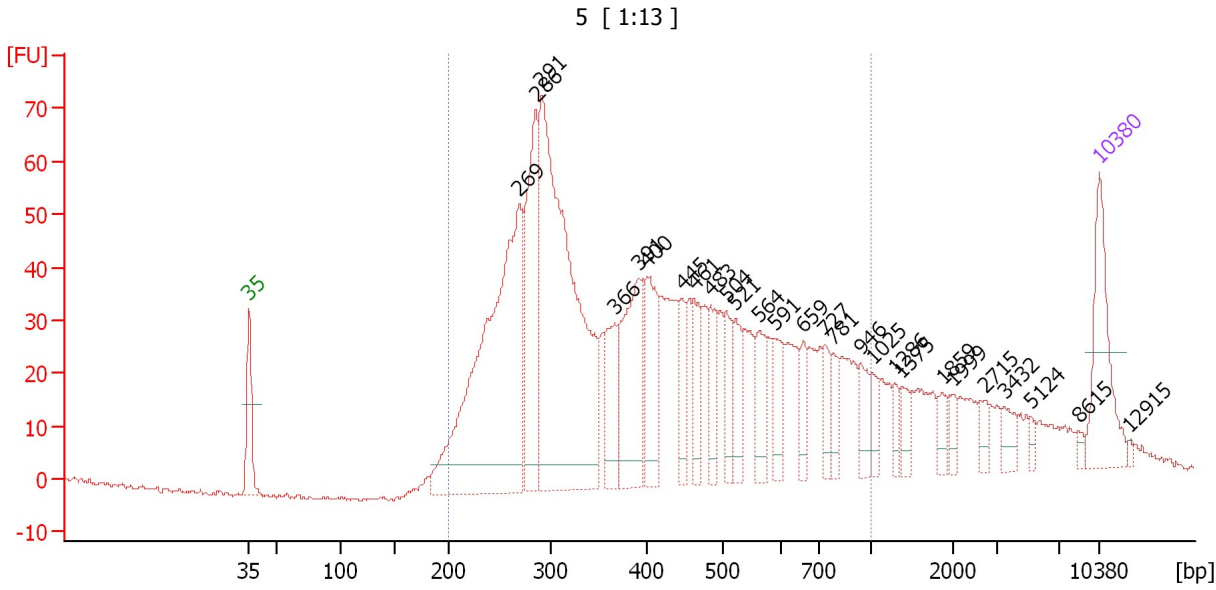
Region table for sample 8 : 4

From [bp]	To [bp]	Average Size [bp]	Molarity [pmol/l]	Conc. [pg/ μ l]	Co Corr. for Area	% of Total	Size distribution in CV [%]
200	1,000	455	10,076.0	2,425.60	1,664.1	87	41.7

Assay Class: High Sensitivity DNA Assay
 Data Path: C:\...ents and Settings\Bioanalyzer\2013-11-15\2013-11-15_001.xad

Created: 11/15/2013 10:26:18 AM
 Modified: 11/15/2013 11:34:07 AM

Electropherogram Summary Continued ...



Overall Results for sample 9 : 5

Number of peaks found: 27 Corr. Area 1: 1,446.0
 Noise: 0.5

Peak table for sample 9 : 5

Peak	Aligned Migration Time [s]	Size [bp]	Conc. [pg/μl]	Molarity [pmol/l]	Observations
1	43.00	35	125.00	5,411.3	Lower Marker
2	65.25	269	555.35	3,123.0	
3	66.61	286	196.96	1,045.1	
4	67.09	291	598.76	3,114.8	
5	73.11	366	72.60	300.5	
6	75.08	391	152.57	591.5	
7	75.83	400	83.97	317.9	
8	78.64	445	38.64	131.5	
9	79.65	461	48.87	160.6	
10	81.01	483	46.33	145.4	
11	82.28	504	43.42	130.4	
12	83.07	521	40.11	116.6	
13	85.04	564	43.50	116.9	
14	86.32	591	36.05	92.4	
15	88.64	659	25.14	57.8	
16	90.35	727	25.78	53.7	
17	91.10	781	22.01	42.7	
18	93.38	946	27.86	44.6	
19	94.30	1,025	19.31	28.6	
20	96.10	1,286	12.51	14.7	
21	96.72	1,375	16.41	18.1	
22	100.05	1,859	13.67	11.1	
23	101.02	1,999	12.36	9.4	
24	103.61	2,715	12.24	6.8	
25	105.19	3,432	16.40	7.2	

Assay Class: High Sensitivity DNA Assay
 Data Path: C:\...ents and Settings\Bioanalyzer\2013-11-15\2013-11-15_001.xad

Created: 11/15/2013 10:26:18 AM
 Modified: 11/15/2013 11:34:07 AM

Electropherogram Summary Continued ...

... Peak table for sample 9 : 5

Peak	Aligned Migration Time [s]	Size [bp]	Conc. [pg/μl]	Molarity [pmol/l]	Observations
26	107.34	5,124	5.95	1.8	
27	111.29	8,615	4.85	0.9	
28	113.00	10,380	75.00	10.9	Upper Marker
29	115.46	12,915	0.00	0.0	

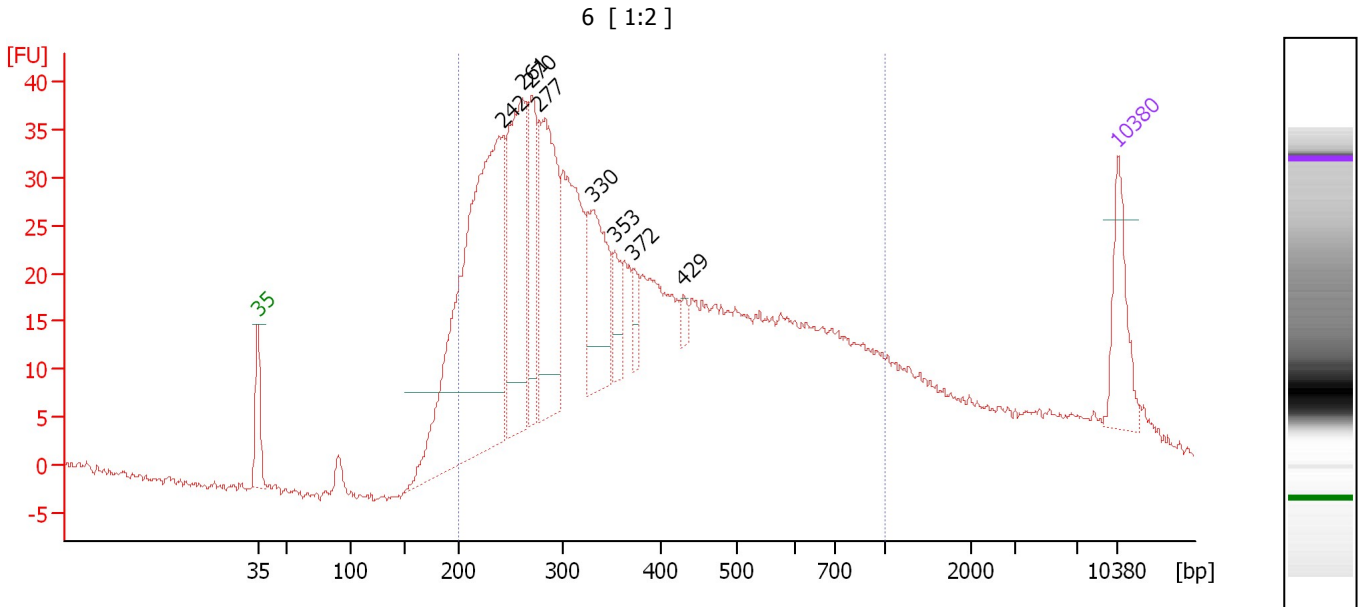
Region table for sample 9 : 5

From [bp]	To [bp]	Average Size [bp]	Molarity [pmol/l]	Conc. [pg/μl]	Co Corr. for Area	% of Total	Size distribution in CV [%]
200	1,000	427	10,087.3	2,344.50	1,446.0	86	40.5

Assay Class: High Sensitivity DNA Assay
 Data Path: C:\...ents and Settings\Bioanalyzer\2013-11-15\2013-11-15_001.xad

Created: 11/15/2013 10:26:18 AM
 Modified: 11/15/2013 11:34:07 AM

Electropherogram Summary Continued ...



Overall Results for sample 10 : 6

Number of peaks found: 8 Corr. Area 1: 975.3
 Noise: 0.4

Peak table for sample 10 : 6

Peak	Aligned Migration Time [s]	Size [bp]	Conc. [pg/μl]	Molarity [pmol/l]	Observations
1	43.00	35	125.00	5,411.3	Lower Marker
2	62.98	242	856.21	5,349.8	
3	64.54	261	338.61	1,965.6	
4	65.28	270	136.10	764.5	
5	65.93	277	297.90	1,626.8	
6	70.23	330	182.37	837.3	
7	72.05	353	51.34	220.5	
8	73.57	372	26.89	109.6	
9	77.65	429	13.15	46.4	
10	113.00	10,380	75.00	10.9	Upper Marker

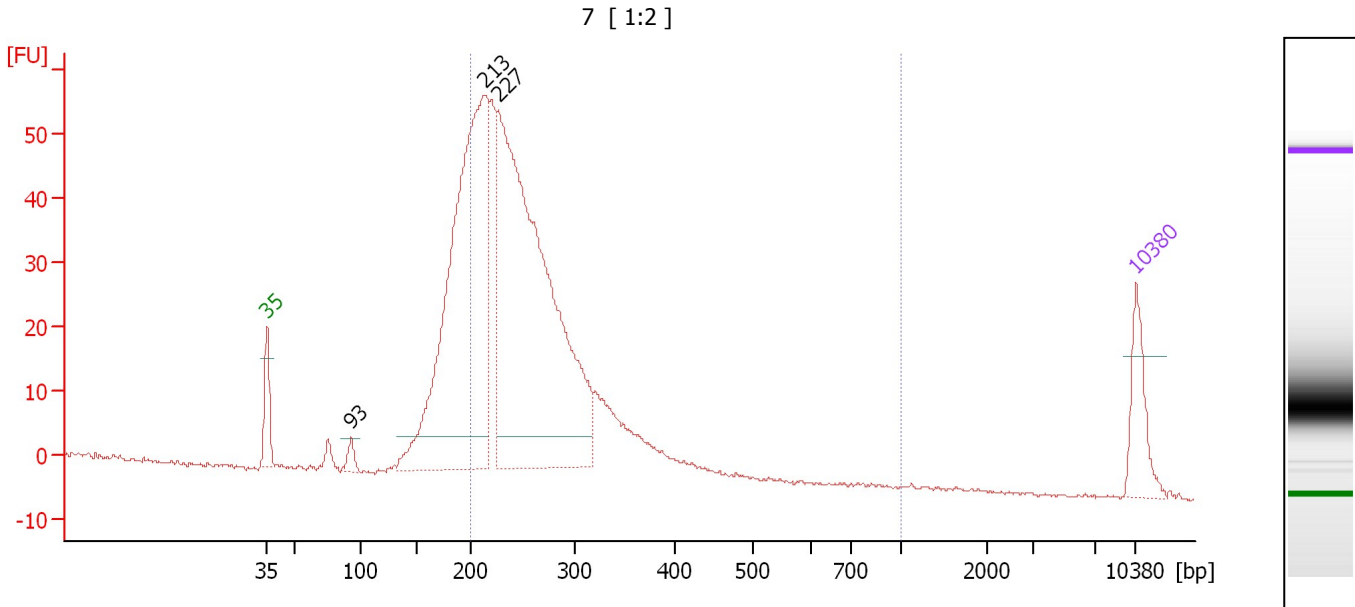
Region table for sample 10 : 6

From [bp]	To [bp]	Average Size [bp]	Molarity [pmol/l]	Conc. [pg/μl]	Co Corr. lor Area	% of Total	Size distribution in CV [%]
200	1,000	394	16,547.1	3,500.49	975.3	88	43.6

Assay Class: High Sensitivity DNA Assay
 Data Path: C:\...ents and Settings\Bioanalyzer\2013-11-15\2013-11-15_001.xad

Created: 11/15/2013 10:26:18 AM
 Modified: 11/15/2013 11:34:07 AM

Electropherogram Summary Continued ...



Overall Results for sample 11 : 7

Number of peaks found: 3 Corr. Area 1: 675.3
 Noise: 0.3

Peak table for sample 11 : 7

Peak	Aligned Migration Time [s]	Size [bp]	Conc. [pg/μl]	Molarity [pmol/l]	Observations
1	43.00	35	125.00	5,411.3	Lower Marker
2	49.79	93	26.87	436.1	
3	60.48	213	1,218.11	8,667.7	
4	61.64	227	1,423.18	9,513.5	
5	113.00	10,380	75.00	10.9	Upper Marker

Region table for sample 11 : 7

From [bp]	To [bp]	Average Size [bp]	Molarity [pmol/l]	Conc. [pg/μl]	Co Corr. lor Area	% of Total	Size distribution in CV [%]
200	1,000	264	14,037.3	2,343.59	675.3	76	23.8

Assay Class: High Sensitivity DNA Assay
Data Path: C:\...ents and Settings\Bioanalyzer\2013-11-15\2013-11-15_001.xad

Created: 11/15/2013 10:26:18 AM
Modified: 11/15/2013 11:34:07 AM

Gel Image

