

Assay Class: High Sensitivity DNA Assay
Data Path: C:\...ents and Settings\Bioanalyzer\2013-11-15\2013-11-15_005.xad

Created: 11/15/2013 12:55:51 PM
Modified: 11/15/2013 1:36:16 PM

Electrophoresis File Run Summary

Instrument Information:

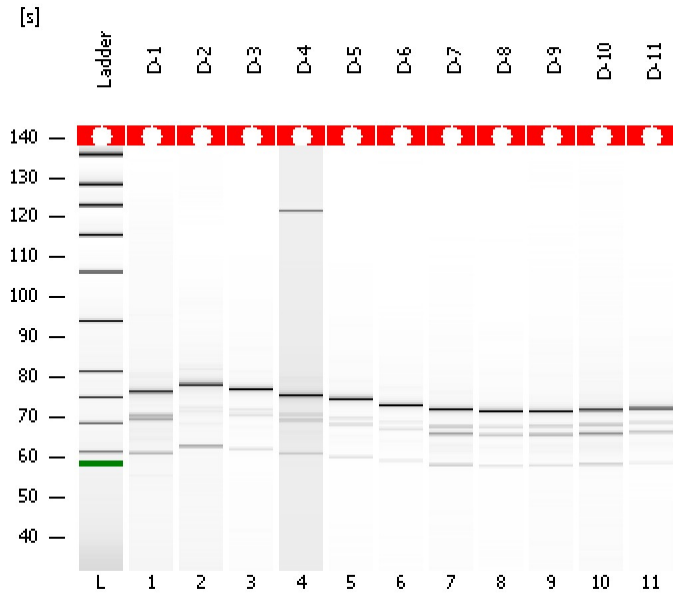
Instrument Name: DE13701086 Firmware: C.01.069
Serial#: DE13701086 Type: G2938B

Assay Information:

Assay Origin Path: C:\Program Files\Agilent\2100 bioanalyzer\2100 expert\assays\dsDNA\High Sensitivity DNA.xsy
Assay Class: High Sensitivity DNA Assay
Version: 1.03
Assay Comments: Copyright © 2003-2010 Agilent Technologies

Chip Information:

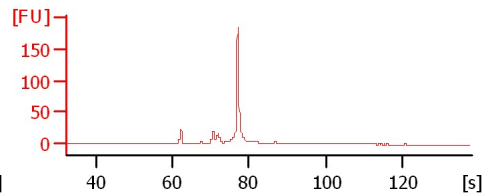
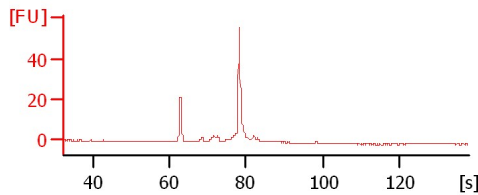
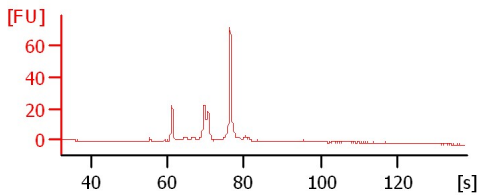
Chip Lot #: Reagent Kit Lot #:
Chip Comments:



D-1

D-2

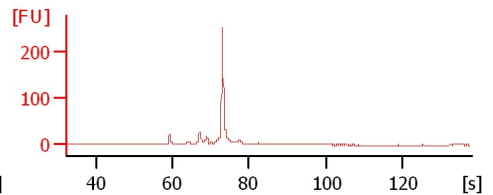
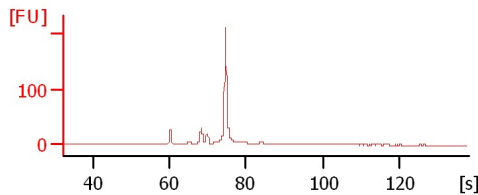
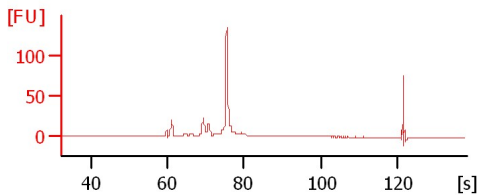
D-3



D-4

D-5

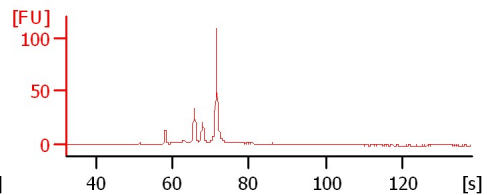
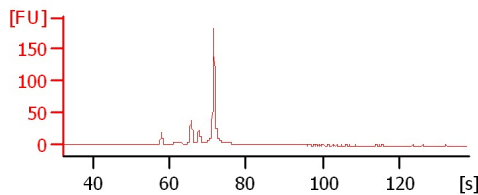
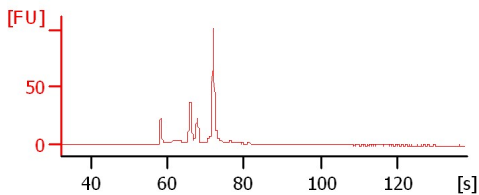
D-6



D-7

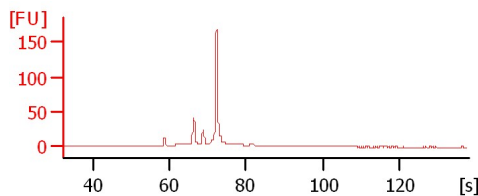
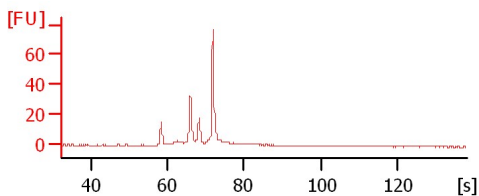
D-8

D-9



D-10

D-11



Assay Class: High Sensitivity DNA Assay
 Data Path: C:\...ents and Settings\Bioanalyzer\2013-11-15\2013-11-15_005.xad

Created: 11/15/2013 12:55:51 PM
 Modified: 11/15/2013 1:36:16 PM

Electrophoresis File Run Summary (Chip Summary)

Sample Name	Sample Comment	Rest. Digest	Status	Observation	Result Label	Result Color
D-1		<input type="checkbox"/>	✓			
D-2		<input type="checkbox"/>	✓			
D-3		<input type="checkbox"/>	✓			
D-4		<input type="checkbox"/>	✓			
D-5		<input type="checkbox"/>	✓			
D-6		<input type="checkbox"/>	✓			
D-7		<input type="checkbox"/>	✓			
D-8		<input type="checkbox"/>	✓			
D-9		<input type="checkbox"/>	✓			
D-10		<input type="checkbox"/>	✓			
D-11		<input type="checkbox"/>	✓			
Ladder		<input type="checkbox"/>	✓			

Chip Lot #

Reagent Kit Lot #

Chip Comments :

Assay Class: High Sensitivity DNA Assay
Data Path: C:\...ents and Settings\Bioanalyzer\2013-11-15\2013-11-15_005.xad

Created: 11/15/2013 12:55:51 PM
Modified: 11/15/2013 1:36:16 PM

Electrophoresis Assay Details

General Analysis Settings

Number of Available Sample and Ladder Wells (Max.) : 12
Minimum Visible Range [s] : 32
Maximum Visible Range [s] : 138
Start Analysis Time Range [s] : 33
End Analysis Time Range [s] : 137.5
Ladder Concentration [pg/μl] : 1950
Uses Standard Area for Ladder Fragments
Lower Marker Concentration [pg/μl] : 125
Upper Marker Concentration [pg/μl] : 75
Used Upper Marker for Quantitation
Standard Curve Fit is Point to Point
Show Data Aligned to Lower and Upper Marker

Integrator Settings

Integration Start Time [s] : 33.05
Integration End Time [s] : 137
Slope Threshold : 0.8
Height Threshold [FU] : 5
Area Threshold : 0.1
Width Threshold [s] : 0.6
Baseline Plateau [s] : 0.5

Filter Settings

Filter Width [s] : 0.5
Polynomial Order : 4

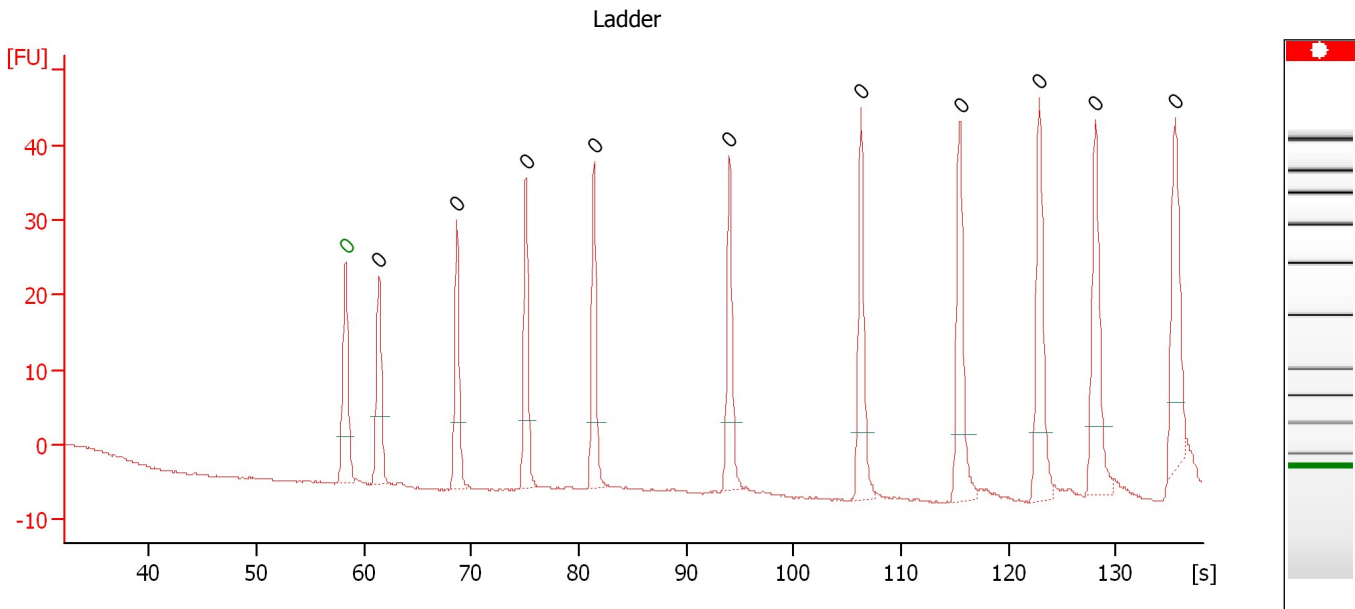
Ladder

Ladder Peak	Size	Area
1	35	160
2	50	210
3	100	208
4	150	221
5	200	242
6	300	270
7	400	305
8	500	306
9	600	336
10	700	321
11	1000	366
12	2000	413
13	3000	411
14	7000	400
15	10380	214

Assay Class: High Sensitivity DNA Assay
 Data Path: C:\...ents and Settings\Bioanalyzer\2013-11-15\2013-11-15_005.xad

Created: 11/15/2013 12:55:51 PM
 Modified: 11/15/2013 1:36:16 PM

Electropherogram Summary



Overall Results for Ladder

Noise: 0.1

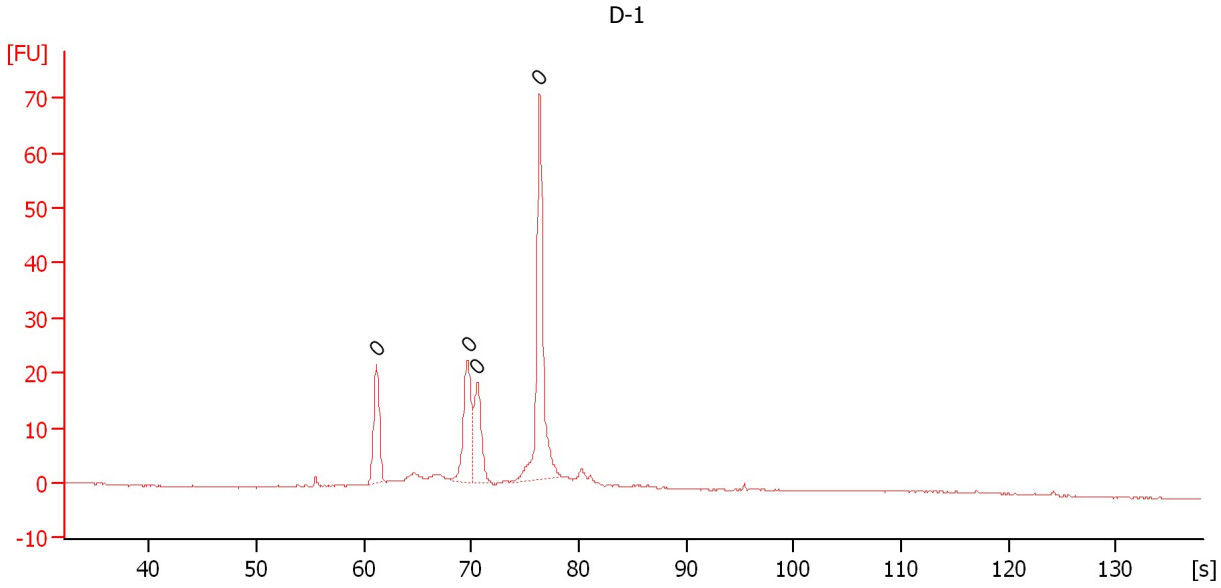
Peak table for Ladder

Peak	Aligned Migration Time [s]	Size [bp]	Conc. [pg/μl]	Molarity [pmol/l]	Observations
1	58.30	0	0.00	0.0	Lower Marker
2	61.40	0	0.00	0.0	Ladder Peak
3	68.65	0	0.00	0.0	Ladder Peak
4	75.10	0	0.00	0.0	Ladder Peak
5	81.40	0	0.00	0.0	Ladder Peak
6	94.05	0	0.00	0.0	Ladder Peak
7	106.30	0	0.00	0.0	Ladder Peak
8	115.50	0	0.00	0.0	Ladder Peak
9	122.90	0	0.00	0.0	Ladder Peak
10	128.10	0	0.00	0.0	Ladder Peak
11	135.50	0	0.00	0.0	Ladder Peak

Assay Class: High Sensitivity DNA Assay
Data Path: C:\...ents and Settings\Bioanalyzer\2013-11-15\2013-11-15_005.xad

Created: 11/15/2013 12:55:51 PM
Modified: 11/15/2013 1:36:16 PM

Electropherogram Summary Continued ...



Overall Results for sample 1 : D-1

Number of peaks found: 0 Noise: 0.1

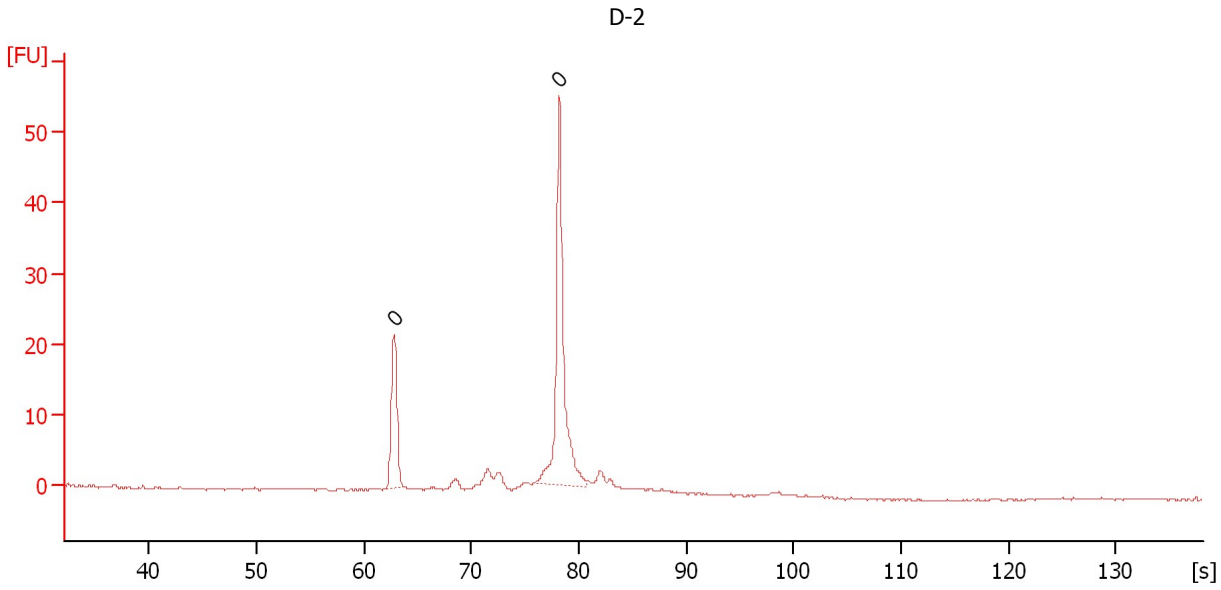
Peak table for sample 1 : D-1

Peak	Aligned Migration Time [s]	Size [bp]	Conc. [pg/μl]	Molarity [pmol/l]	Observations
1	61.15	0	0.00	0.0	
2	69.65	0	0.00	0.0	
3	70.55	0	0.00	0.0	
4	76.35	0	0.00	0.0	

Assay Class: High Sensitivity DNA Assay
Data Path: C:\...ents and Settings\Bioanalyzer\2013-11-15\2013-11-15_005.xad

Created: 11/15/2013 12:55:51 PM
Modified: 11/15/2013 1:36:16 PM

Electropherogram Summary Continued ...



Overall Results for sample 2 : D-2

Number of peaks found: 0 Noise: 0.1

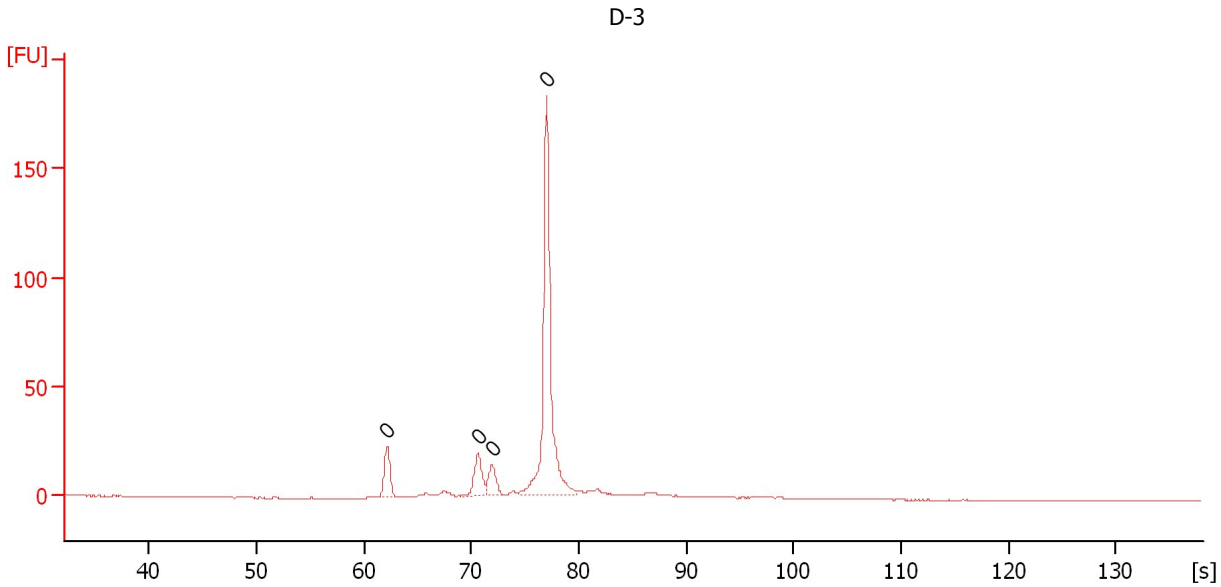
Peak table for sample 2 : D-2

Peak	Aligned Migration Time [s]	Size [bp]	Conc. [pg/μl]	Molarity [pmol/l]	Observations
1	62.80	0	0.00	0.0	
2	78.20	0	0.00	0.0	

Assay Class: High Sensitivity DNA Assay
 Data Path: C:\...ents and Settings\Bioanalyzer\2013-11-15\2013-11-15_005.xad

Created: 11/15/2013 12:55:51 PM
 Modified: 11/15/2013 1:36:16 PM

Electropherogram Summary Continued ...



Overall Results for sample 3 : D-3

Number of peaks found: 0 Noise: 0.1

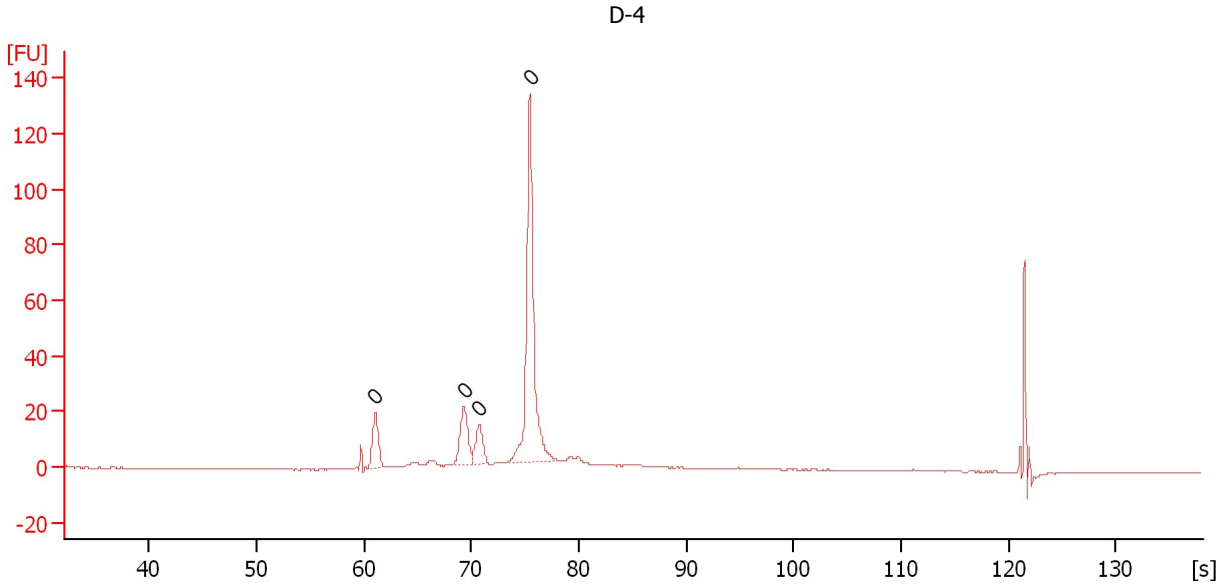
Peak table for sample 3 : D-3

Peak	Aligned Migration Time [s]	Size [bp]	Conc. [pg/μl]	Molarity [pmol/l]	Observations
1	62.15	0	0.00	0.0	
2	70.60	0	0.00	0.0	
3	71.95	0	0.00	0.0	
4	77.00	0	0.00	0.0	

Assay Class: High Sensitivity DNA Assay
Data Path: C:\...ents and Settings\Bioanalyzer\2013-11-15\2013-11-15_005.xad

Created: 11/15/2013 12:55:51 PM
Modified: 11/15/2013 1:36:16 PM

Electropherogram Summary Continued ...



Overall Results for sample 4 : D-4

Number of peaks found: 0 Noise: 0.1

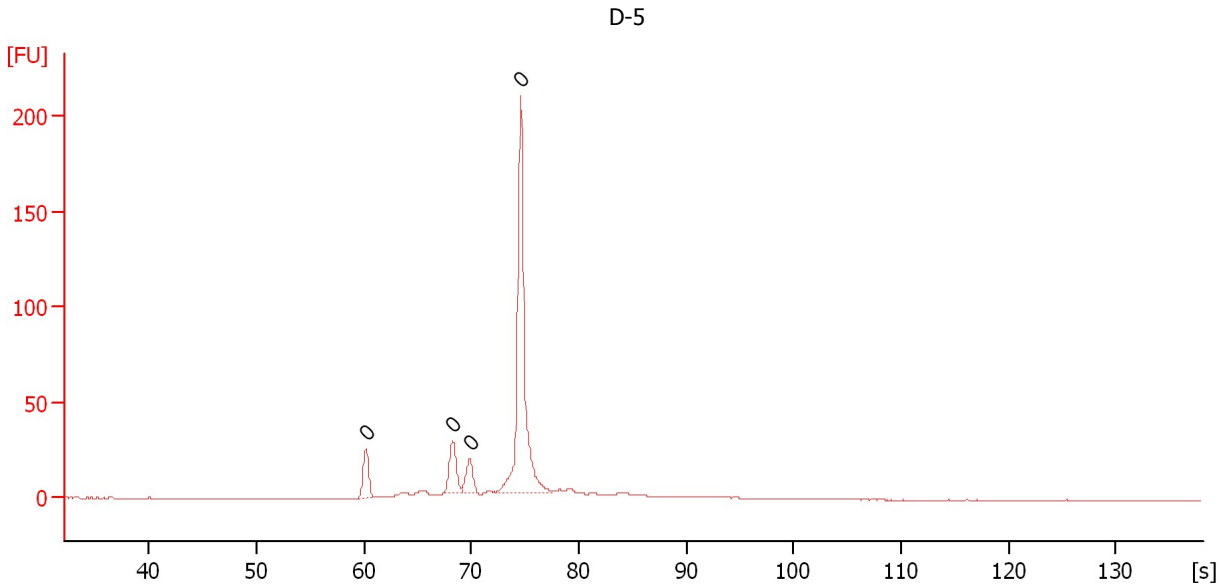
Peak table for sample 4 : D-4

Peak	Aligned Migration Time [s]	Size [bp]	Conc. [pg/μl]	Molarity [pmol/l]	Observations
1	61.05	0	0.00	0.0	
2	69.30	0	0.00	0.0	
3	70.75	0	0.00	0.0	
4	75.45	0	0.00	0.0	

Assay Class: High Sensitivity DNA Assay
Data Path: C:\...ents and Settings\Bioanalyzer\2013-11-15\2013-11-15_005.xad

Created: 11/15/2013 12:55:51 PM
Modified: 11/15/2013 1:36:16 PM

Electropherogram Summary Continued ...



Overall Results for sample 5 : D-5

Number of peaks found: 0 Noise: 0.2

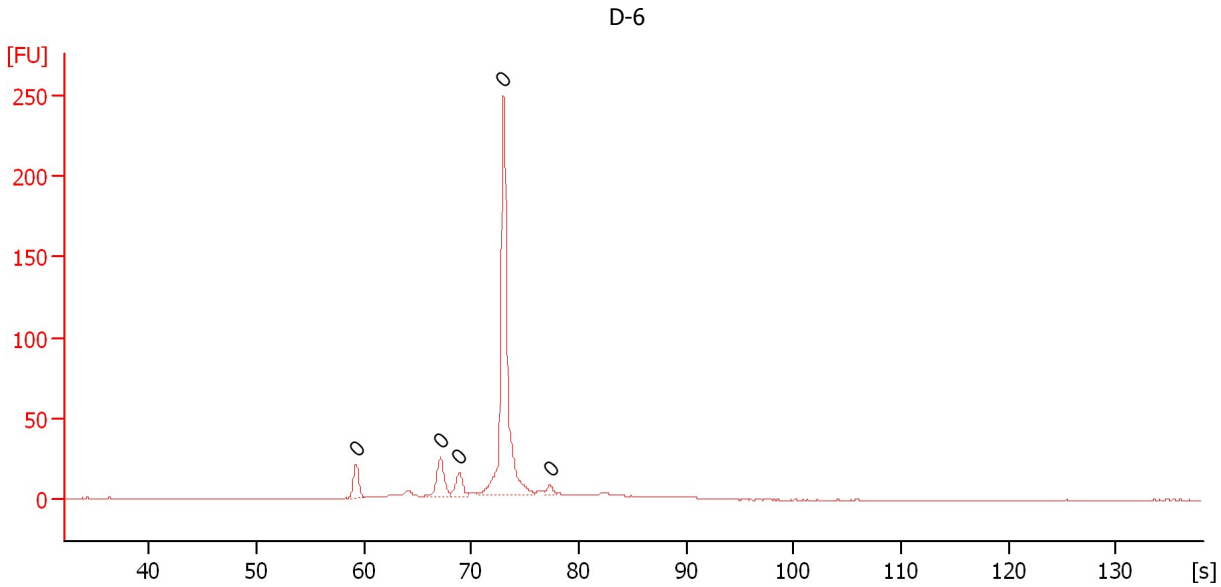
Peak table for sample 5 : D-5

Peak	Aligned Migration Time [s]	Size [bp]	Conc. [pg/μl]	Molarity [pmol/l]	Observations
1	60.20	0	0.00	0.0	
2	68.25	0	0.00	0.0	
3	69.85	0	0.00	0.0	
4	74.60	0	0.00	0.0	

Assay Class: High Sensitivity DNA Assay
Data Path: C:\...ents and Settings\Bioanalyzer\2013-11-15\2013-11-15_005.xad

Created: 11/15/2013 12:55:51 PM
Modified: 11/15/2013 1:36:16 PM

Electropherogram Summary Continued ...



Overall Results for sample 6 : D-6

Number of peaks found: 0 Noise: 0.2

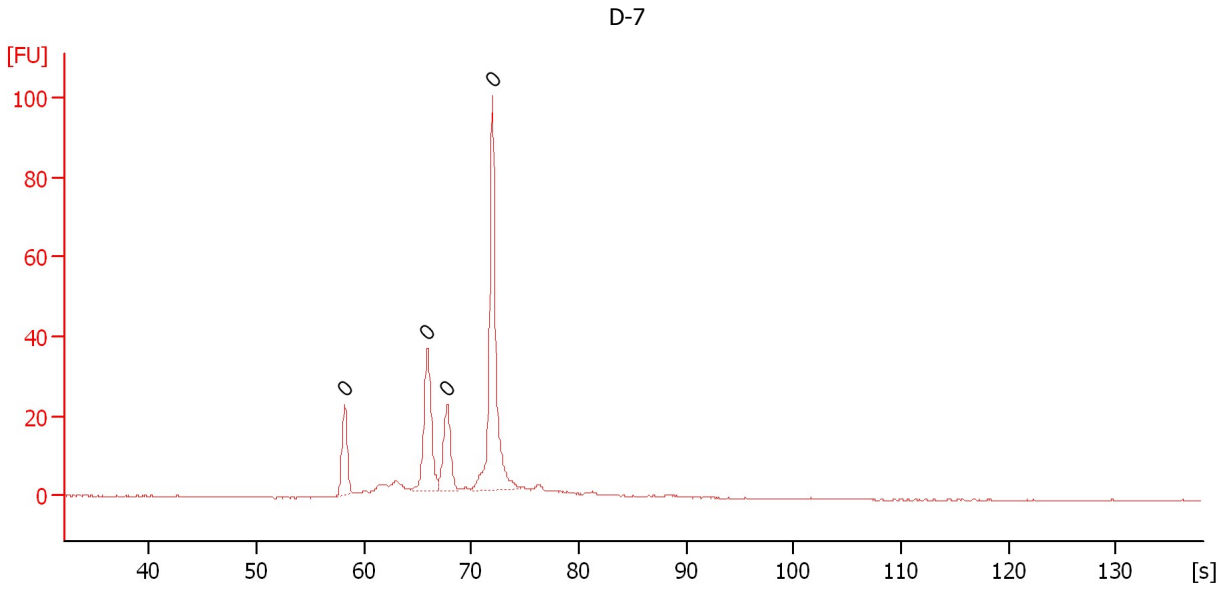
Peak table for sample 6 : D-6

Peak	Aligned Migration Time [s]	Size [bp]	Conc. [pg/μl]	Molarity [pmol/l]	Observations
1	59.25	0	0.00	0.0	
2	67.10	0	0.00	0.0	
3	68.85	0	0.00	0.0	
4	73.00	0	0.00	0.0	
5	77.35	0	0.00	0.0	

Assay Class: High Sensitivity DNA Assay
Data Path: C:\...ents and Settings\Bioanalyzer\2013-11-15\2013-11-15_005.xad

Created: 11/15/2013 12:55:51 PM
Modified: 11/15/2013 1:36:16 PM

Electropherogram Summary Continued ...



Overall Results for sample 7 : D-7

Number of peaks found: 0 Noise: 0.1

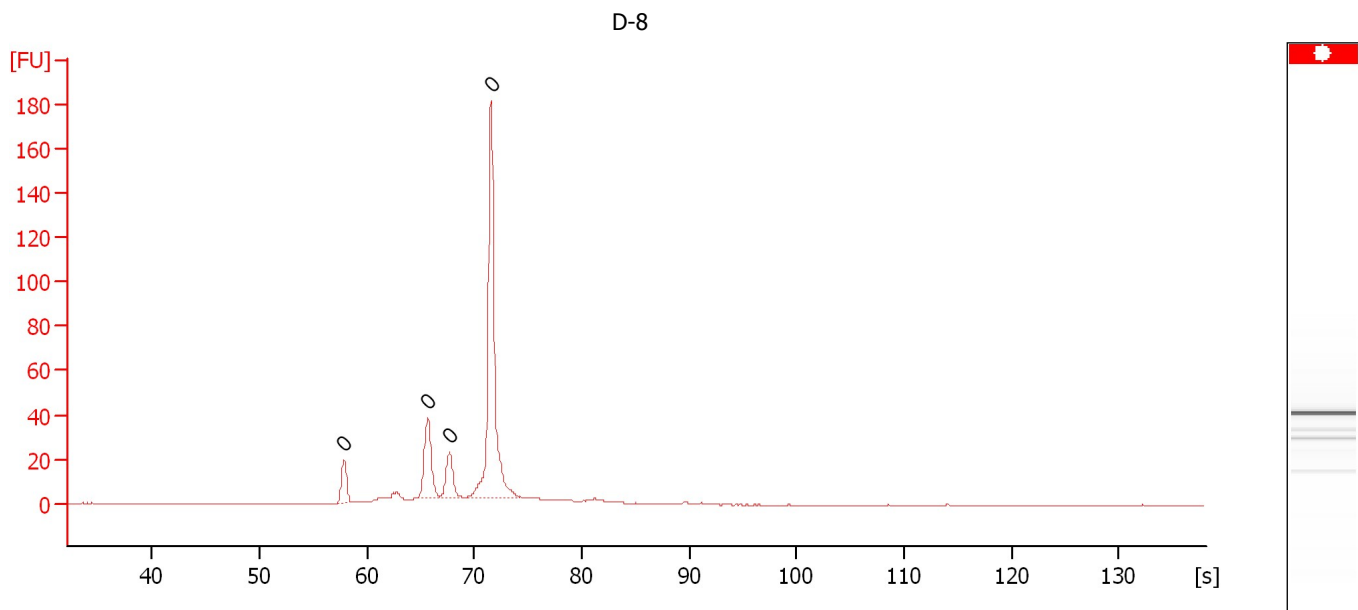
Peak table for sample 7 : D-7

Peak	Aligned Migration Time [s]	Size [bp]	Conc. [pg/μl]	Molarity [pmol/l]	Observations
1	58.20	0	0.00	0.0	
2	65.90	0	0.00	0.0	
3	67.75	0	0.00	0.0	
4	71.95	0	0.00	0.0	

Assay Class: High Sensitivity DNA Assay
 Data Path: C:\...ents and Settings\Bioanalyzer\2013-11-15\2013-11-15_005.xad

Created: 11/15/2013 12:55:51 PM
 Modified: 11/15/2013 1:36:16 PM

Electropherogram Summary Continued ...



Overall Results for sample 8 : D-8

Number of peaks found: 0 Noise: 0.2

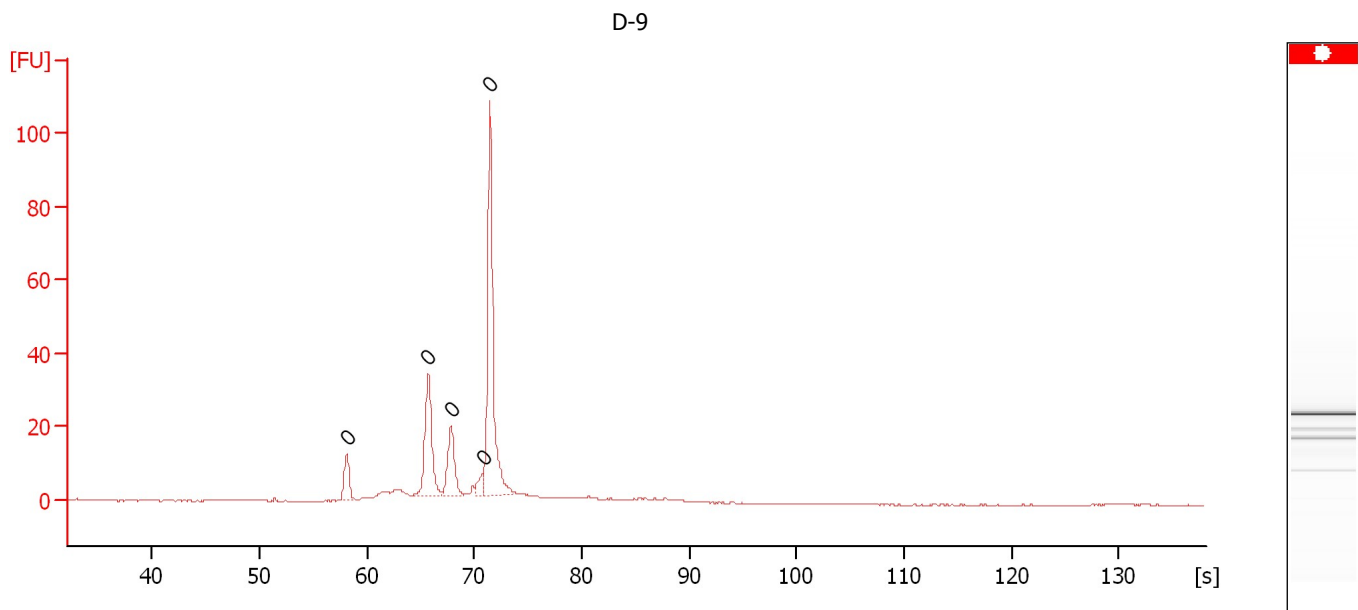
Peak table for sample 8 : D-8

Peak	Aligned Migration Time [s]	Size [bp]	Conc. [pg/μl]	Molarity [pmol/l]	Observations
1	57.85	0	0.00	0.0	
2	65.65	0	0.00	0.0	
3	67.65	0	0.00	0.0	
4	71.55	0	0.00	0.0	

Assay Class: High Sensitivity DNA Assay
 Data Path: C:\...ents and Settings\Bioanalyzer\2013-11-15\2013-11-15_005.xad

Created: 11/15/2013 12:55:51 PM
 Modified: 11/15/2013 1:36:16 PM

Electropherogram Summary Continued ...



Overall Results for sample 9 : D-9

Number of peaks found: 0 Noise: 0.1

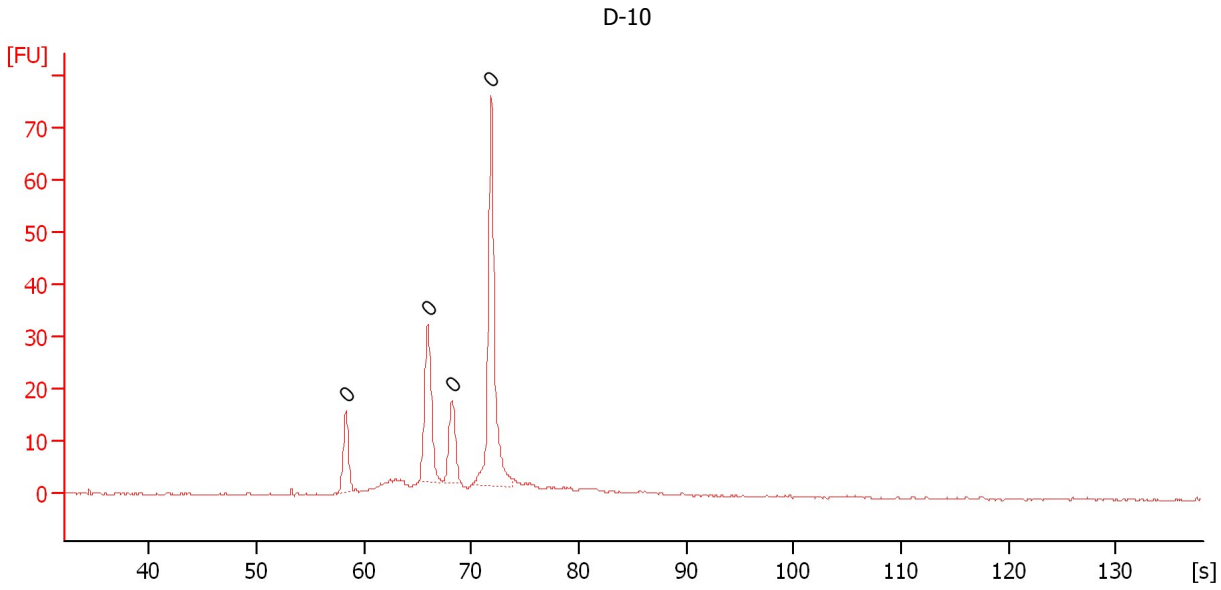
Peak table for sample 9 : D-9

Peak	Aligned Migration Time [s]	Size [bp]	Conc. [pg/μl]	Molarity [pmol/l]	Observations
1	58.10	0	0.00	0.0	
2	65.70	0	0.00	0.0	
3	67.80	0	0.00	0.0	
4	70.80	0	0.00	0.0	
5	71.45	0	0.00	0.0	

Assay Class: High Sensitivity DNA Assay
Data Path: C:\...ents and Settings\Bioanalyzer\2013-11-15\2013-11-15_005.xad

Created: 11/15/2013 12:55:51 PM
Modified: 11/15/2013 1:36:16 PM

Electropherogram Summary Continued ...



Overall Results for sample 10 : D-10

Number of peaks found: 0 Noise: 0.2

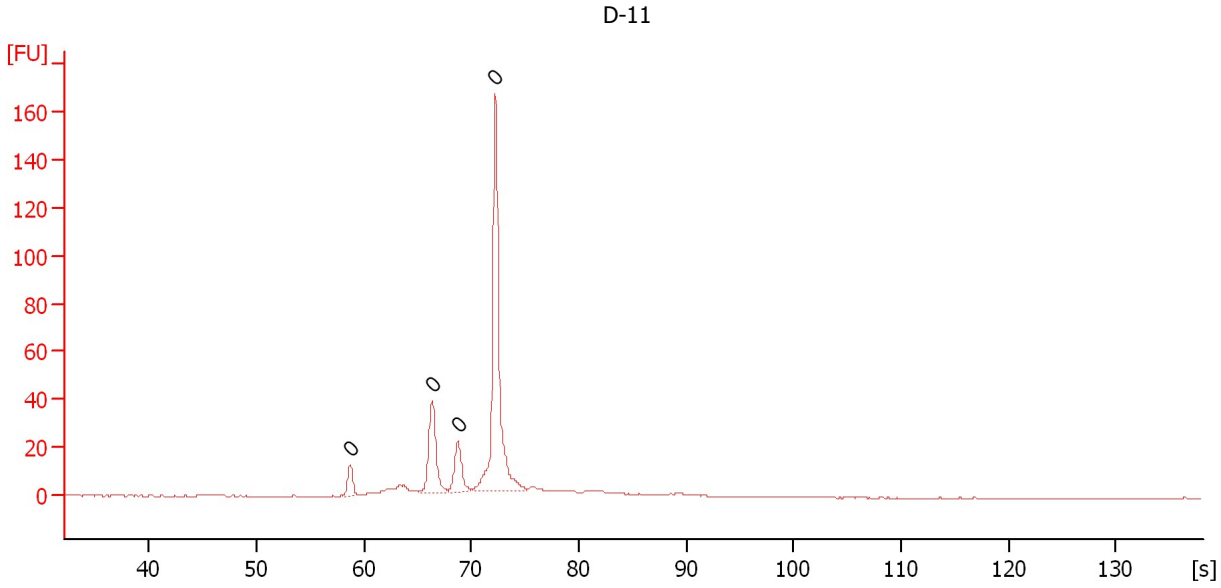
Peak table for sample 10 : D-10

Peak	Aligned Migration Time [s]	Size [bp]	Conc. [pg/μl]	Molarity [pmol/l]	Observations
1	58.30	0	0.00	0.0	
2	65.95	0	0.00	0.0	
3	68.20	0	0.00	0.0	
4	71.85	0	0.00	0.0	

Assay Class: High Sensitivity DNA Assay
Data Path: C:\...ents and Settings\Bioanalyzer\2013-11-15\2013-11-15_005.xad

Created: 11/15/2013 12:55:51 PM
Modified: 11/15/2013 1:36:16 PM

Electropherogram Summary Continued ...



Overall Results for sample 11 : D-11

Number of peaks found: 0 Noise: 0.1

Peak table for sample 11 : D-11

Peak	Aligned Migration Time [s]	Size [bp]	Conc. [pg/μl]	Molarity [pmol/l]	Observations
1	58.70	0	0.00	0.0	
2	66.35	0	0.00	0.0	
3	68.75	0	0.00	0.0	
4	72.25	0	0.00	0.0	

Assay Class: High Sensitivity DNA Assay
Data Path: C:\...ents and Settings\Bioanalyzer\2013-11-15\2013-11-15_005.xad

Created: 11/15/2013 12:55:51 PM
Modified: 11/15/2013 1:36:16 PM

Gel Image

