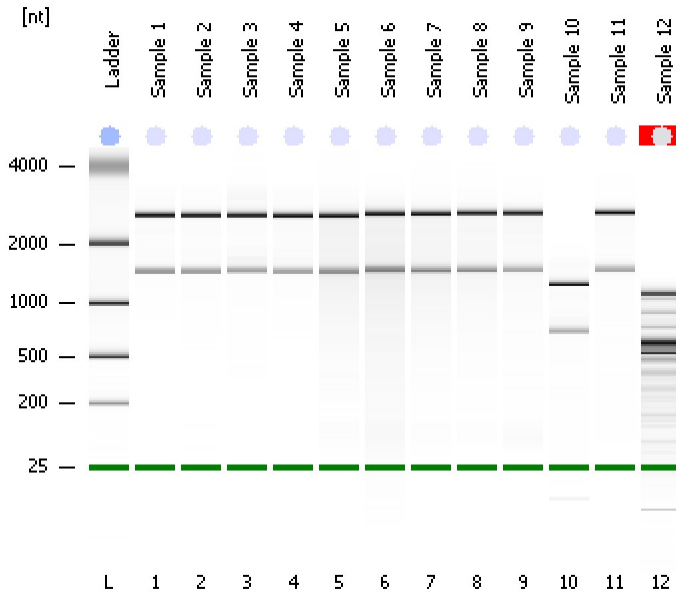


Assay Class: Eukaryote Total RNA Nano
Data Path: C:\...ents and Settings\Bioanalyzer\2013-11-18\2013-11-18_001.xad

Created: 11/18/2013 11:39:22 AM
Modified: 11/18/2013 12:08:29 PM

Electrophoresis File Run Summary



Instrument Information:

Instrument Name: DE13701086 Firmware: C.01.069
Serial#: DE13701086 Type: G2938B

Assay Information:

Assay Origin Path: C:\Program Files\Agilent\2100 bioanalyzer\2100 expert\assays\RNA\Eukaryote Total RNA Nano Series II.xsy

Assay Class: Eukaryote Total RNA Nano

Version: 2.6

Assay Comments: Total RNA Analysis ng sensitivity (Eukaryote)

© Copyright 2003 - 2009 Agilent Technologies, Inc.

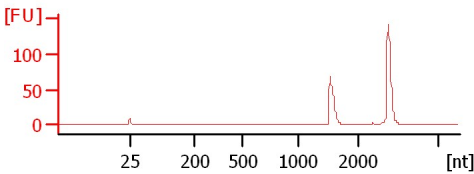
Chip Information:

Chip Lot #:

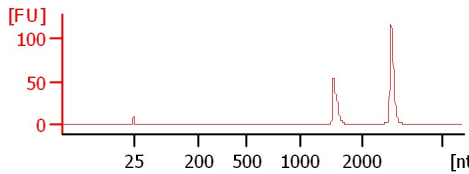
Reagent Kit Lot #:

Chip Comments:

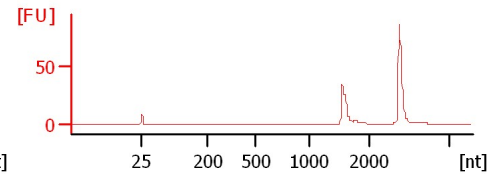
Sample 1
RIN: 2.60



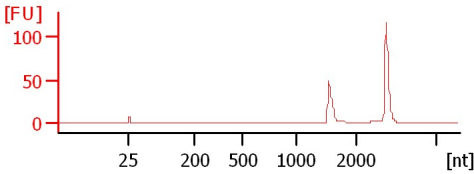
Sample 2
RIN: 2.60



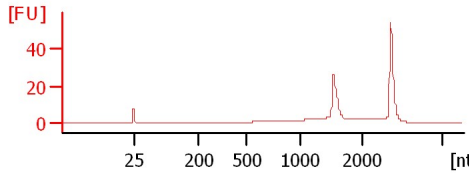
Sample 3
RIN: 7.40



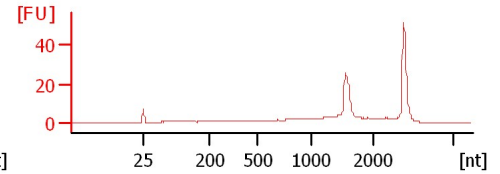
Sample 4
RIN: 2.60



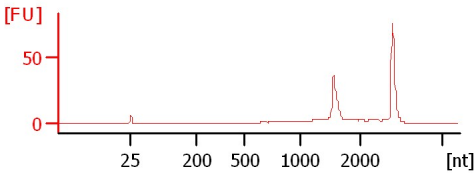
Sample 5
RIN: 2.40



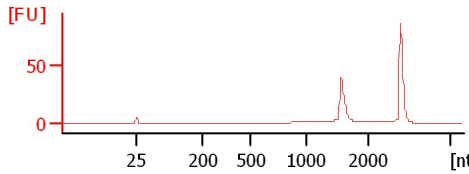
Sample 6
RIN: 4.80



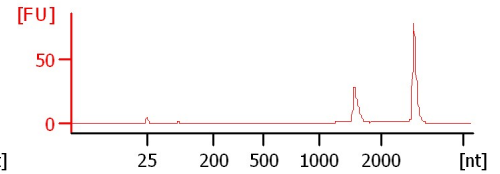
Sample 7
RIN: 2.40



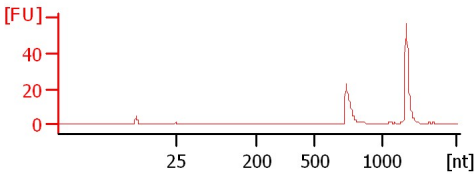
Sample 8
RIN: 2.40



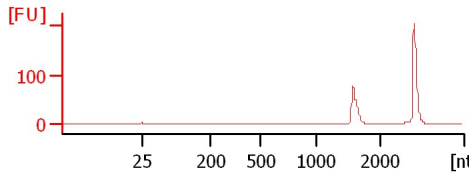
Sample 9
RIN: 2.50



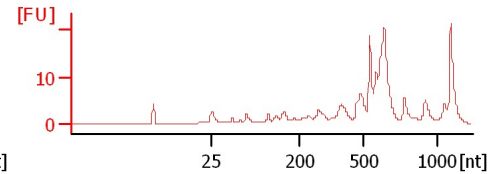
Sample 10
RIN: 6.40



Sample 11
RIN: 2.40



Sample 12
RIN N/A



Assay Class: Eukaryote Total RNA Nano
Data Path: C:\...ents and Settings\Bioanalyzer\2013-11-18\2013-11-18_001.xad

Created: 11/18/2013 11:39:22 AM
Modified: 11/18/2013 12:08:29 PM

Electrophoresis File Run Summary (Chip Summary)

Sample Name	Sample Comment	Status	Result Label	Result Color
Sample 1		✓	RIN: 2.60	
Sample 2		✓	RIN: 2.60	
Sample 3		✓	RIN: 7.40	
Sample 4		✓	RIN: 2.60	
Sample 5		✓	RIN: 2.40	
Sample 6		✓	RIN: 4.80	
Sample 7		✓	RIN: 2.40	
Sample 8		✓	RIN: 2.40	
Sample 9		✓	RIN: 2.50	
Sample 10		✓	RIN: 6.40	
Sample 11		✓	RIN: 2.40	
Sample 12		✓	RIN N/A	
Ladder		✓	All Other Samples	

Chip Lot #

Reagent Kit Lot #

Chip Comments :

Assay Class: Eukaryote Total RNA Nano
Data Path: C:\...ents and Settings\Bioanalyzer\2013-11-18\2013-11-18_001.xad

Created: 11/18/2013 11:39:22 AM
Modified: 11/18/2013 12:08:29 PM

Electrophoresis Assay Details

General Analysis Settings

Number of Available Sample and Ladder Wells (Max.) : 13
Minimum Visible Range [s] : 17
Maximum Visible Range [s] : 70
Start Analysis Time Range [s] : 19
End Analysis Time Range [s] : 69
Ladder Concentration [ng/ μ l] : 150
Lower Marker Concentration [ng/ μ l] : 0
Upper Marker Concentration [ng/ μ l] : 0
Used Lower Marker for Quantitation
Standard Curve Fit is Logarithmic
Show Data Aligned to Lower Marker

Integrator Settings

Integration Start Time [s] : 19
Integration End Time [s] : 69
Slope Threshold : 0.6
Height Threshold [FU] : 0.5
Area Threshold : 0.2
Width Threshold [s] : 0.5
Baseline Plateau [s] : 6

Filter Settings

Filter Width [s] : 0.5
Polynomial Order : 4

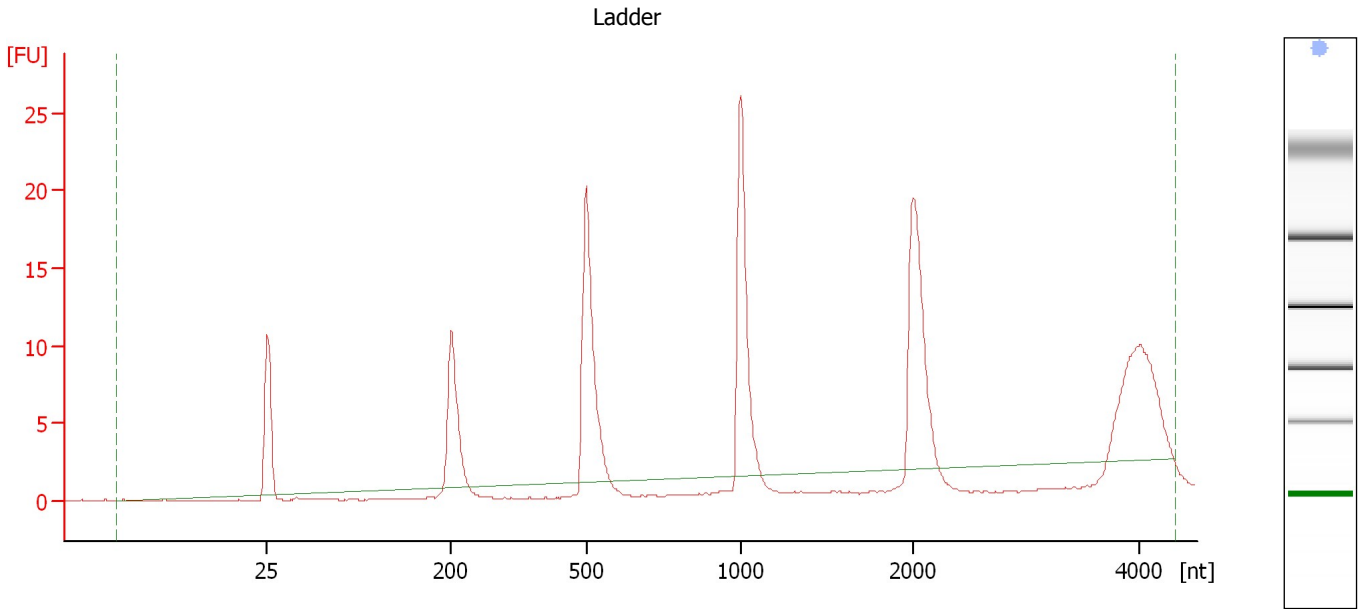
Ladder

Ladder Peak	Size
1	25
2	200
3	500
4	1000
5	2000
6	4000

Assay Class: Eukaryote Total RNA Nano
Data Path: C:\...ents and Settings\Bioanalyzer\2013-11-18\2013-11-18_001.xad

Created: 11/18/2013 11:39:22 AM
Modified: 11/18/2013 12:08:29 PM

Electropherogram Summary



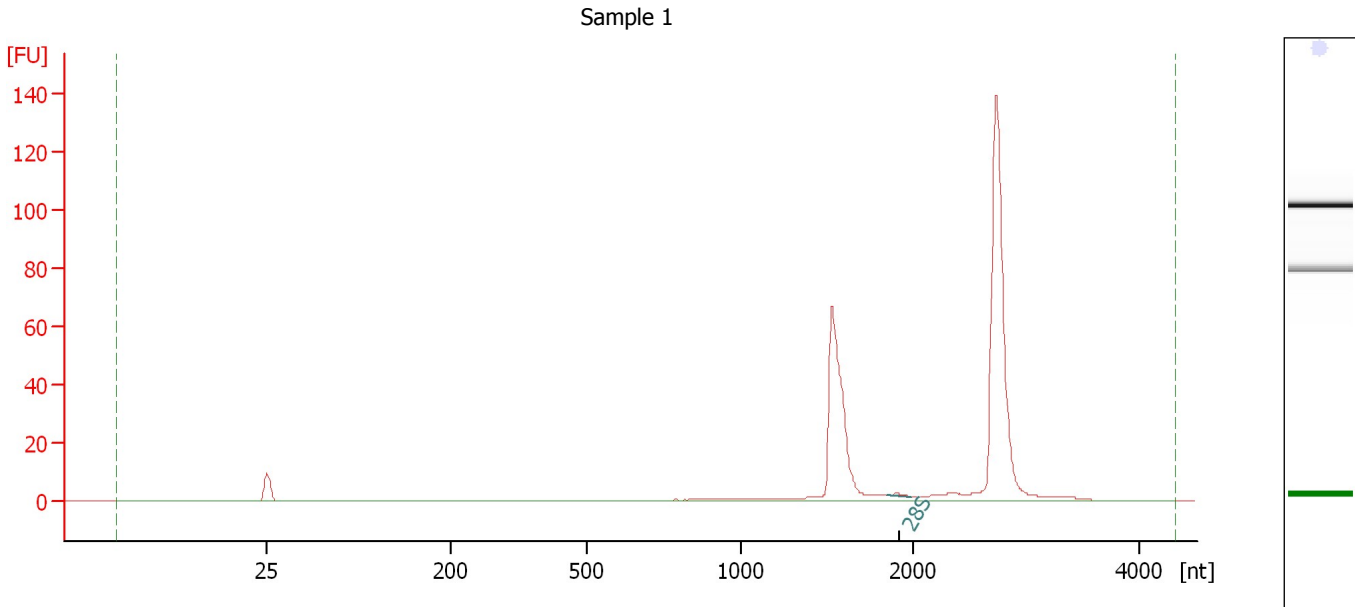
Overall Results for Ladder

RNA Area:	106.6	Result Flagging Color:	
RNA Concentration:	150 ng/ μ l	Result Flagging Label:	All Other Samples

Assay Class: Eukaryote Total RNA Nano
Data Path: C:\...ents and Settings\Bioanalyzer\2013-11-18\2013-11-18_001.xad

Created: 11/18/2013 11:39:22 AM
Modified: 11/18/2013 12:08:29 PM

Electropherogram Summary Continued ...



Overall Results for sample 1 : Sample 1

RNA Area:	277.7	RNA Integrity Number (RIN):	2.6 (B.02.08)
RNA Concentration:	391 ng/μl	Result Flagging Color:	
rRNA Ratio [28s / 18s]:	0.0	Result Flagging Label:	RIN: 2.60

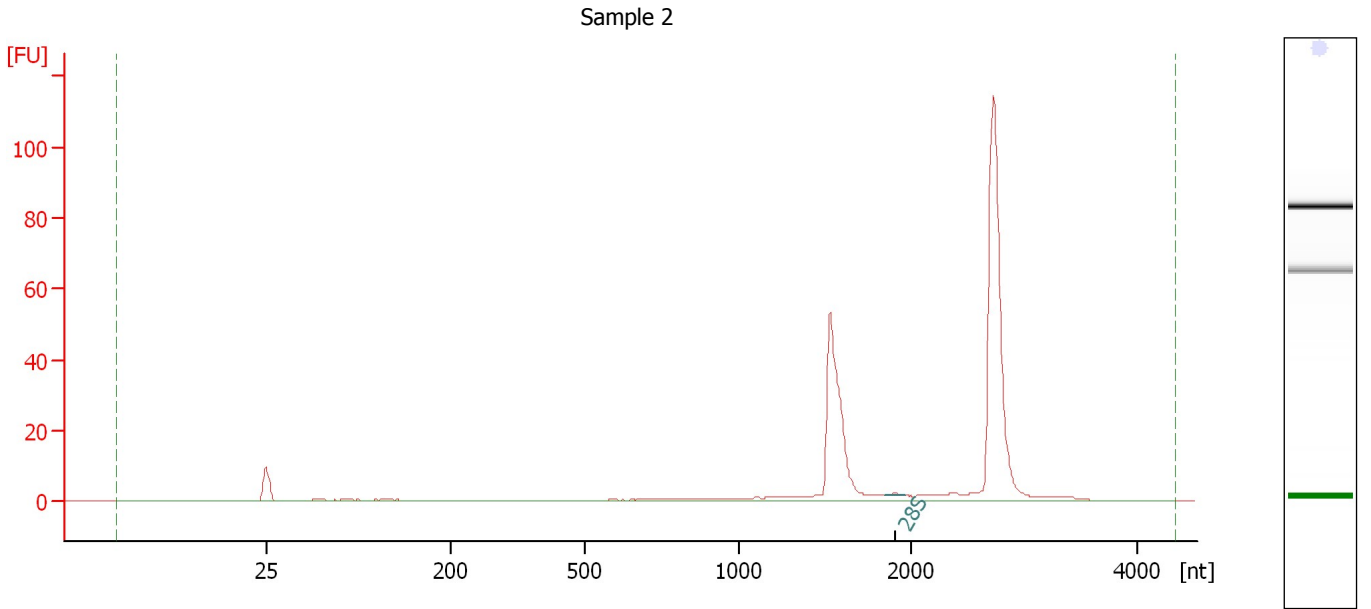
Fragment table for sample 1 : Sample 1

Name	Start Size [nt]	End Size [nt]	Area	% of total Area
28S	1,844	1,987	0.7	0.3

Assay Class: Eukaryote Total RNA Nano
Data Path: C:\...ents and Settings\Bioanalyzer\2013-11-18\2013-11-18_001.xad

Created: 11/18/2013 11:39:22 AM
Modified: 11/18/2013 12:08:29 PM

Electropherogram Summary Continued ...



Overall Results for sample 2 : Sample 2

RNA Area:	233.1	RNA Integrity Number (RIN):	2.6 (B.02.08)
RNA Concentration:	328 ng/μl	Result Flagging Color:	
rRNA Ratio [28s / 18s]:	0.0	Result Flagging Label:	RIN: 2.60

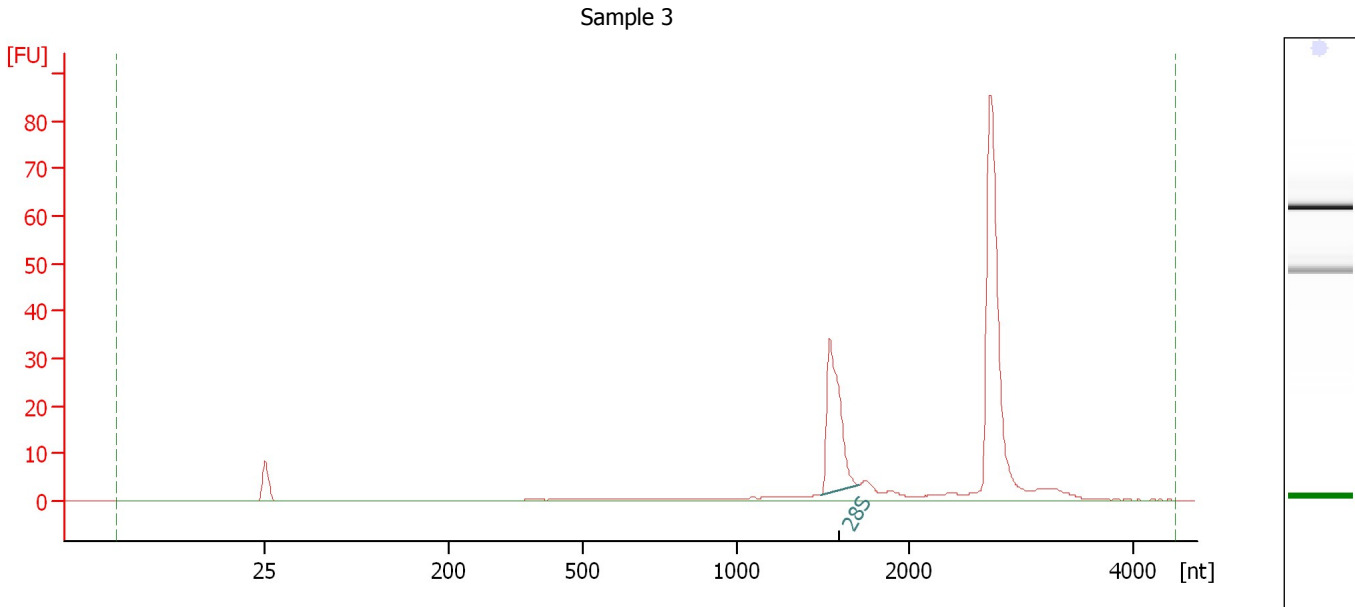
Fragment table for sample 2 : Sample 2

Name	Start Size [nt]	End Size [nt]	Area	% of total Area
28S	1,851	1,969	0.5	0.2

Assay Class: Eukaryote Total RNA Nano
Data Path: C:\...ents and Settings\Bioanalyzer\2013-11-18\2013-11-18_001.xad

Created: 11/18/2013 11:39:22 AM
Modified: 11/18/2013 12:08:29 PM

Electropherogram Summary Continued ...



Overall Results for sample 3 : Sample 3

RNA Area:	175.3	RNA Integrity Number (RIN):	7.4 (B.02.08, Anomaly Threshold(s) manually adapted)
RNA Concentration:	247 ng/μl		
rRNA Ratio [28s / 18s]:	0.0	Result Flagging Color:	
		Result Flagging Label:	RIN: 7.40

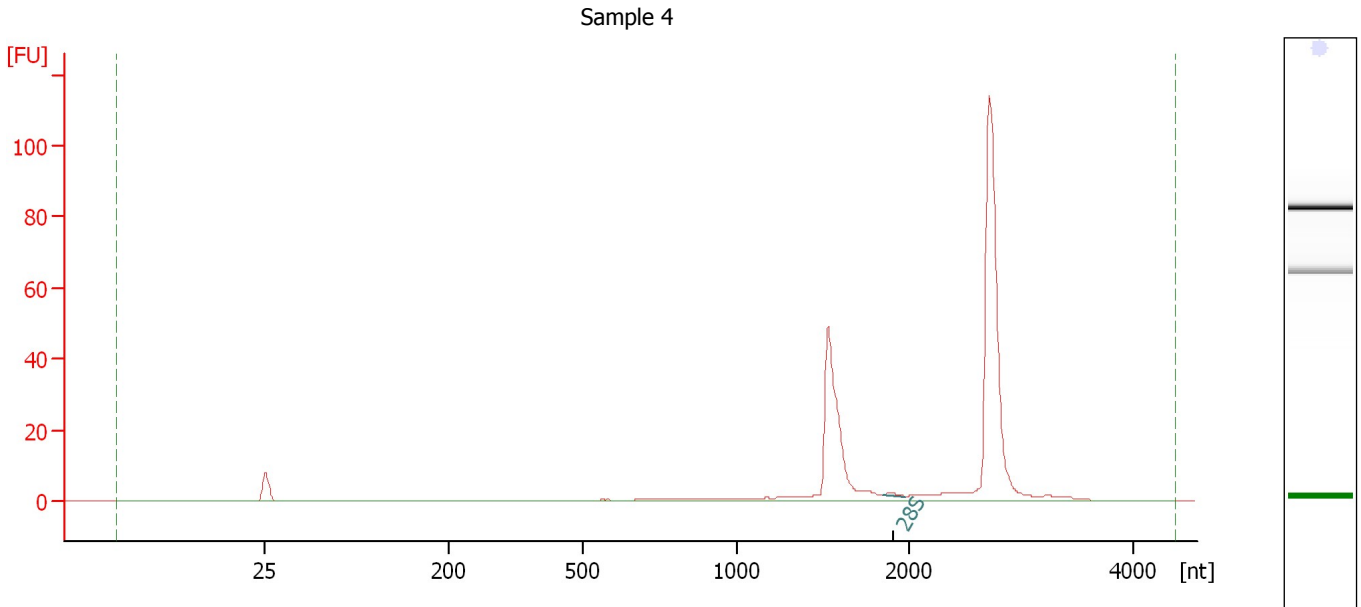
Fragment table for sample 3 : Sample 3

Name	Start Size [nt]	End Size [nt]	Area	% of total Area
28S	1,490	1,708	42.5	24.2

Assay Class: Eukaryote Total RNA Nano
Data Path: C:\...ents and Settings\Bioanalyzer\2013-11-18\2013-11-18_001.xad

Created: 11/18/2013 11:39:22 AM
Modified: 11/18/2013 12:08:29 PM

Electropherogram Summary Continued ...



Overall Results for sample 4 : Sample 4

RNA Area:	219.9	RNA Integrity Number (RIN):	2.6 (B.02.08)
RNA Concentration:	309 ng/μl	Result Flagging Color:	
rRNA Ratio [28s / 18s]:	0.0	Result Flagging Label:	RIN: 2.60

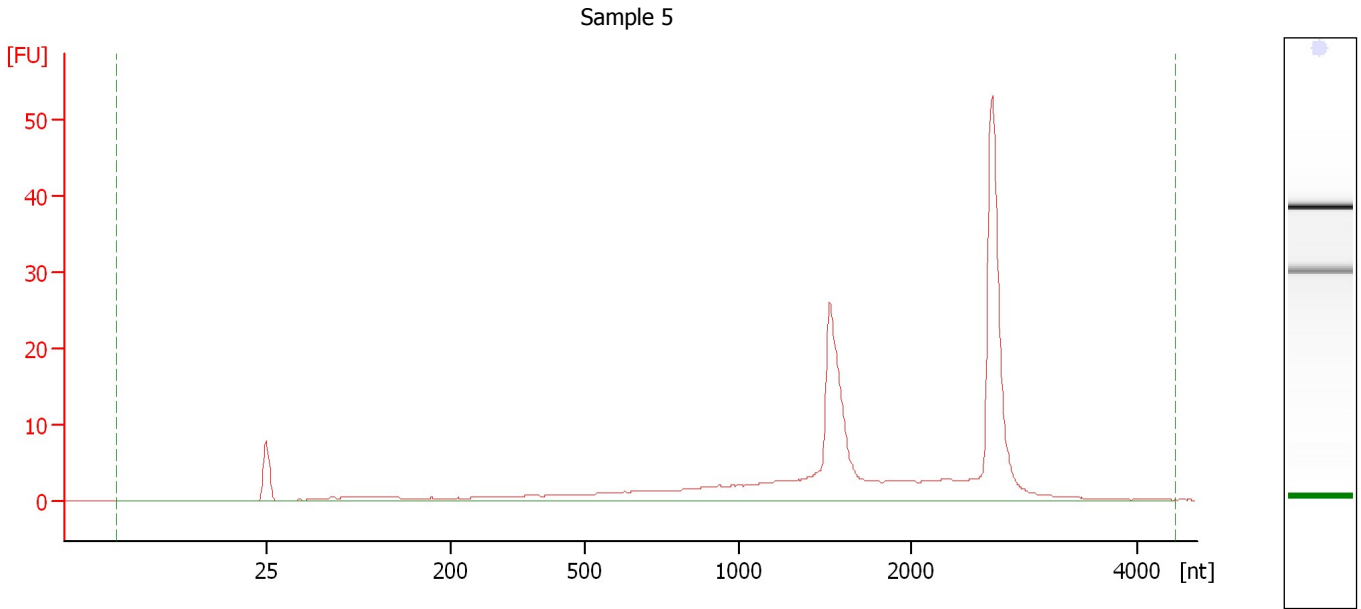
Fragment table for sample 4 : Sample 4

Name	Start Size [nt]	End Size [nt]	Area	% of total Area
28S	1,852	1,976	0.4	0.2

Assay Class: Eukaryote Total RNA Nano
Data Path: C:\...ents and Settings\Bioanalyzer\2013-11-18\2013-11-18_001.xad

Created: 11/18/2013 11:39:22 AM
Modified: 11/18/2013 12:08:29 PM

Electropherogram Summary Continued ...



Overall Results for sample 5 : Sample 5

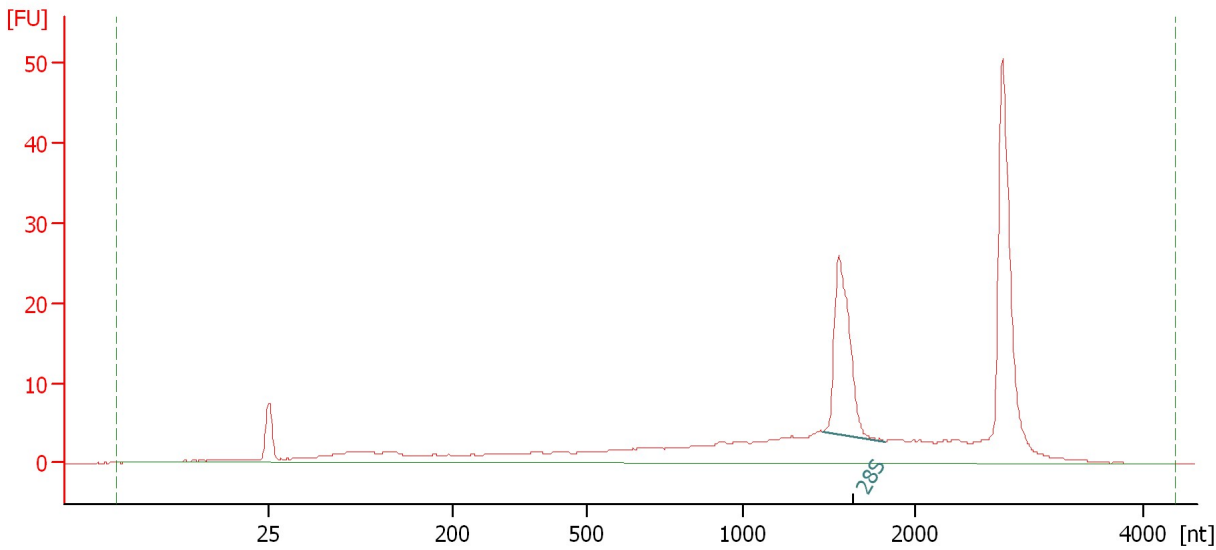
RNA Area:	183.9	RNA Integrity Number (RIN):	2.4 (B.02.08)
RNA Concentration:	259 ng/μl	Result Flagging Color:	
rRNA Ratio [28s / 18s]:	0.0	Result Flagging Label:	RIN: 2.40

Assay Class: Eukaryote Total RNA Nano
Data Path: C:\...ents and Settings\Bioanalyzer\2013-11-18\2013-11-18_001.xad

Created: 11/18/2013 11:39:22 AM
Modified: 11/18/2013 12:08:29 PM

Electropherogram Summary Continued ...

Sample 6



Overall Results for sample 6 : Sample 6

RNA Area:	239.4	RNA Integrity Number (RIN):	4.8 (B.02.08, Anomaly Threshold(s) manually adapted)
RNA Concentration:	337 ng/μl		
rRNA Ratio [28s / 18s]:	0.0	Result Flagging Color:	
		Result Flagging Label:	RIN: 4.80

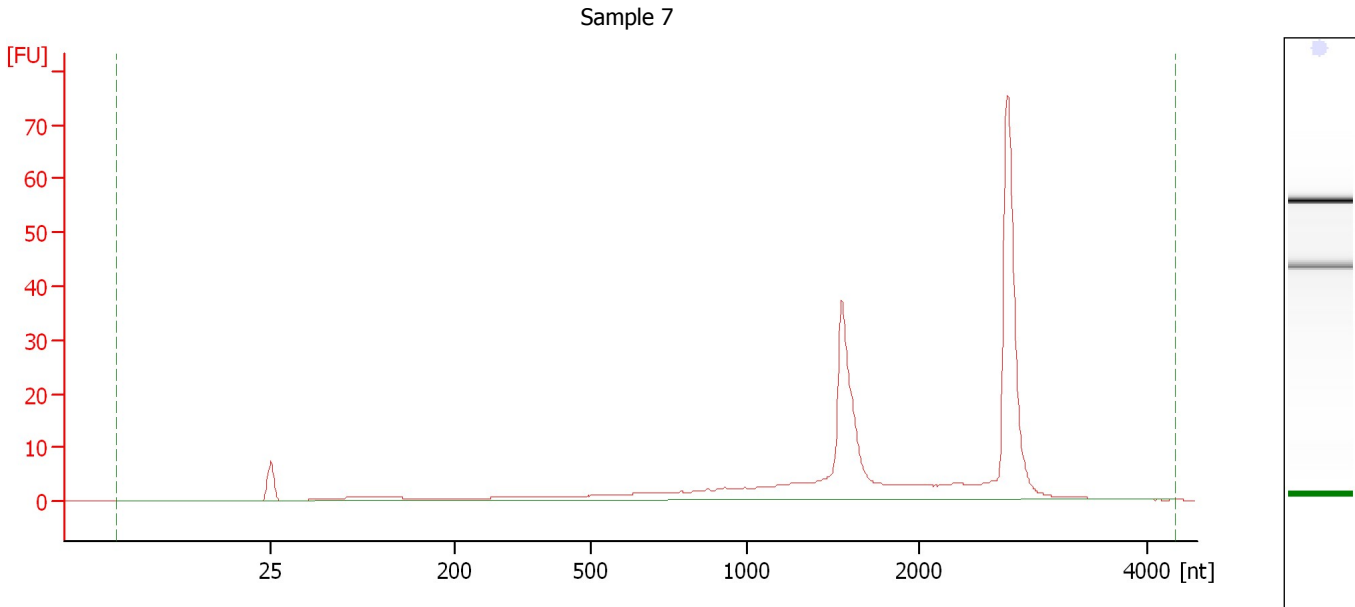
Fragment table for sample 6 : Sample 6

Name	Start Size [nt]	End Size [nt]	Area	% of total Area
28S	1,459	1,825	33.8	14.1

Assay Class: Eukaryote Total RNA Nano
Data Path: C:\...ents and Settings\Bioanalyzer\2013-11-18\2013-11-18_001.xad

Created: 11/18/2013 11:39:22 AM
Modified: 11/18/2013 12:08:29 PM

Electropherogram Summary Continued ...



Overall Results for sample 7 : Sample 7

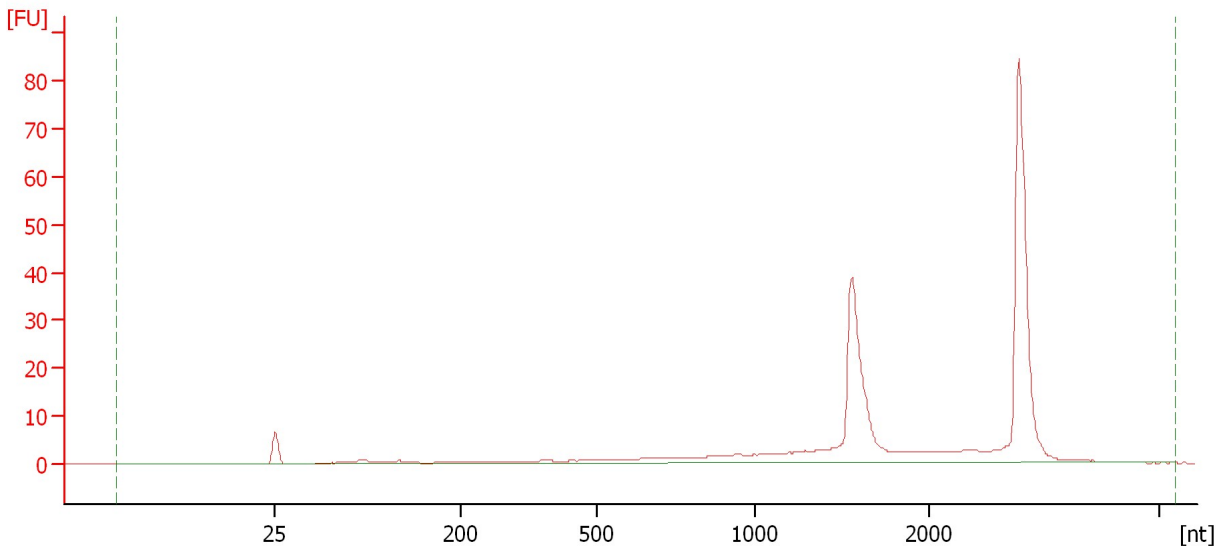
RNA Area:	229.8	RNA Integrity Number (RIN):	2.4 (B.02.08)
RNA Concentration:	323 ng/μl	Result Flagging Color:	
rRNA Ratio [28s / 18s]:	0.0	Result Flagging Label:	RIN: 2.40

Assay Class: Eukaryote Total RNA Nano
Data Path: C:\...ents and Settings\Bioanalyzer\2013-11-18\2013-11-18_001.xad

Created: 11/18/2013 11:39:22 AM
Modified: 11/18/2013 12:08:29 PM

Electropherogram Summary Continued ...

Sample 8



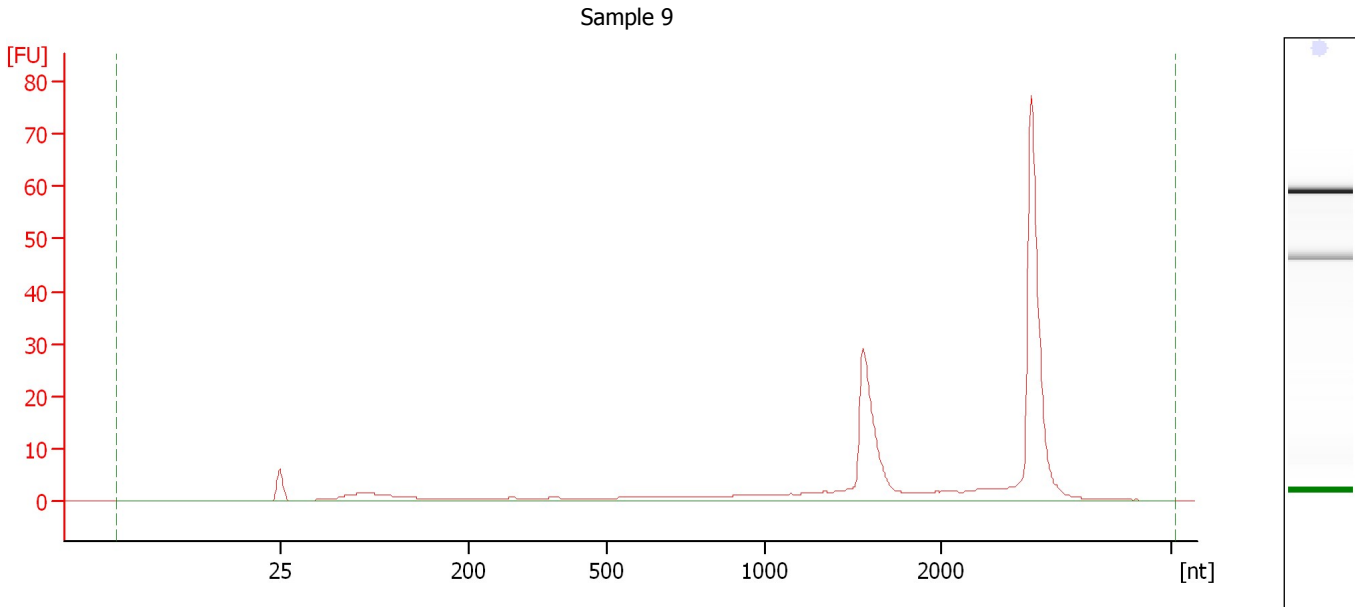
Overall Results for sample 8 : Sample 8

RNA Area:	218.7	RNA Integrity Number (RIN):	2.4 (B.02.08)
RNA Concentration:	308 ng/μl	Result Flagging Color:	
rRNA Ratio [28s / 18s]:	0.0	Result Flagging Label:	RIN: 2.40

Assay Class: Eukaryote Total RNA Nano
Data Path: C:\...ents and Settings\Bioanalyzer\2013-11-18\2013-11-18_001.xad

Created: 11/18/2013 11:39:22 AM
Modified: 11/18/2013 12:08:29 PM

Electropherogram Summary Continued ...



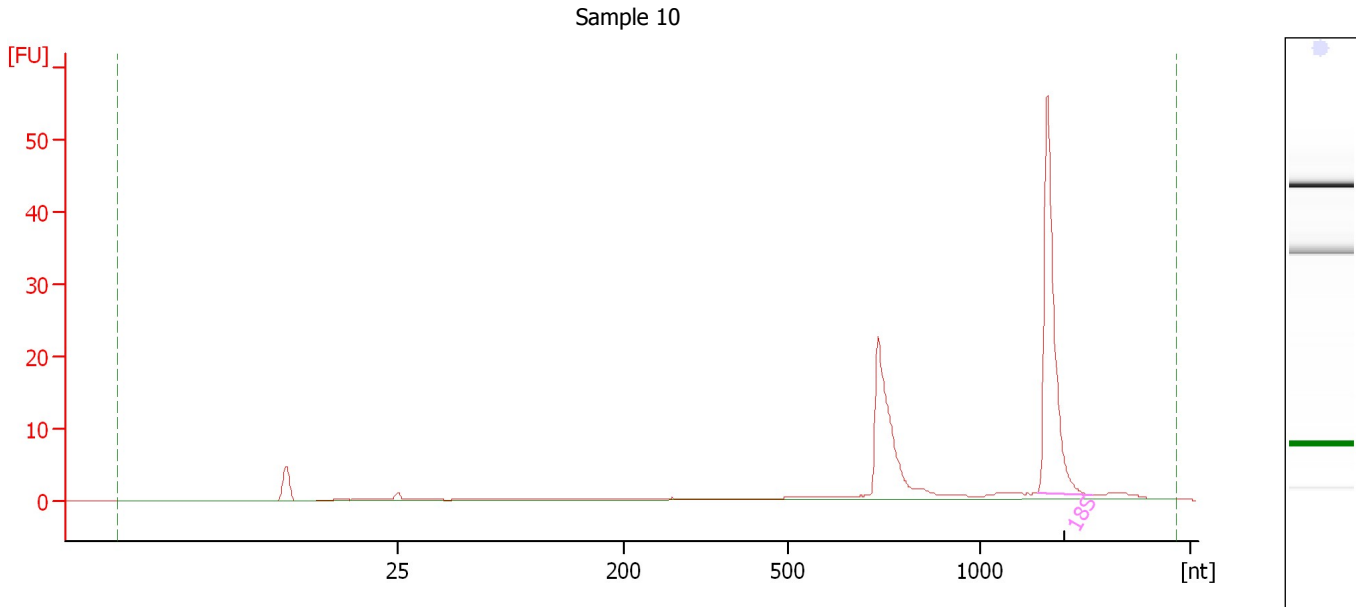
Overall Results for sample 9 : Sample 9

RNA Area:	184.9	RNA Integrity Number (RIN):	2.5 (B.02.08)
RNA Concentration:	260 ng/ μ l	Result Flagging Color:	
rRNA Ratio [28s / 18s]:	0.0	Result Flagging Label:	RIN: 2.50

Assay Class: Eukaryote Total RNA Nano
 Data Path: C:\...ents and Settings\Bioanalyzer\2013-11-18\2013-11-18_001.xad

Created: 11/18/2013 11:39:22 AM
 Modified: 11/18/2013 12:08:29 PM

Electropherogram Summary Continued ...



Overall Results for sample 10 : Sample 10

RNA Area:	111.9	RNA Integrity Number (RIN):	6.4 (B.02.08, Anomaly Threshold(s) manually adapted)
RNA Concentration:	157 ng/μl	Result Flagging Color:	
rRNA Ratio [28s / 18s]:	0.0	Result Flagging Label:	RIN: 6.40

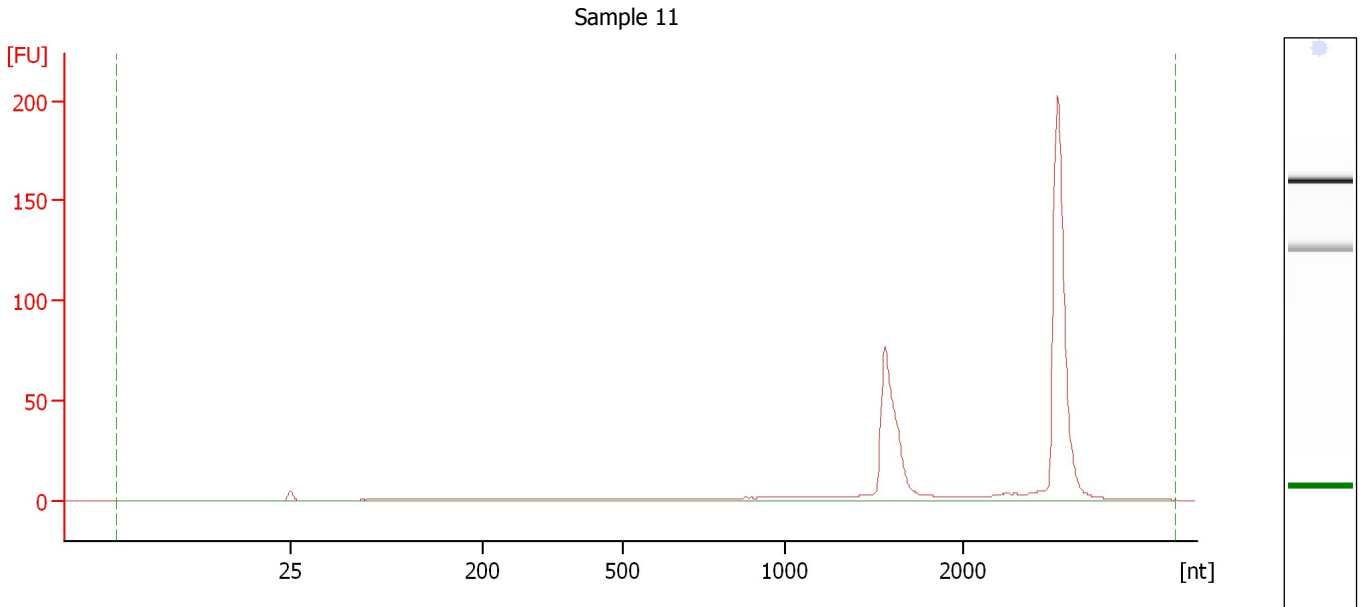
Fragment table for sample 10 : Sample 10

Name	Start Size [nt]	End Size [nt]	Area	% of total Area
18S	1,278	1,536	47.7	42.6

Assay Class: Eukaryote Total RNA Nano
Data Path: C:\...ents and Settings\Bioanalyzer\2013-11-18\2013-11-18_001.xad

Created: 11/18/2013 11:39:22 AM
Modified: 11/18/2013 12:08:29 PM

Electropherogram Summary Continued ...



Overall Results for sample 11 : Sample 11

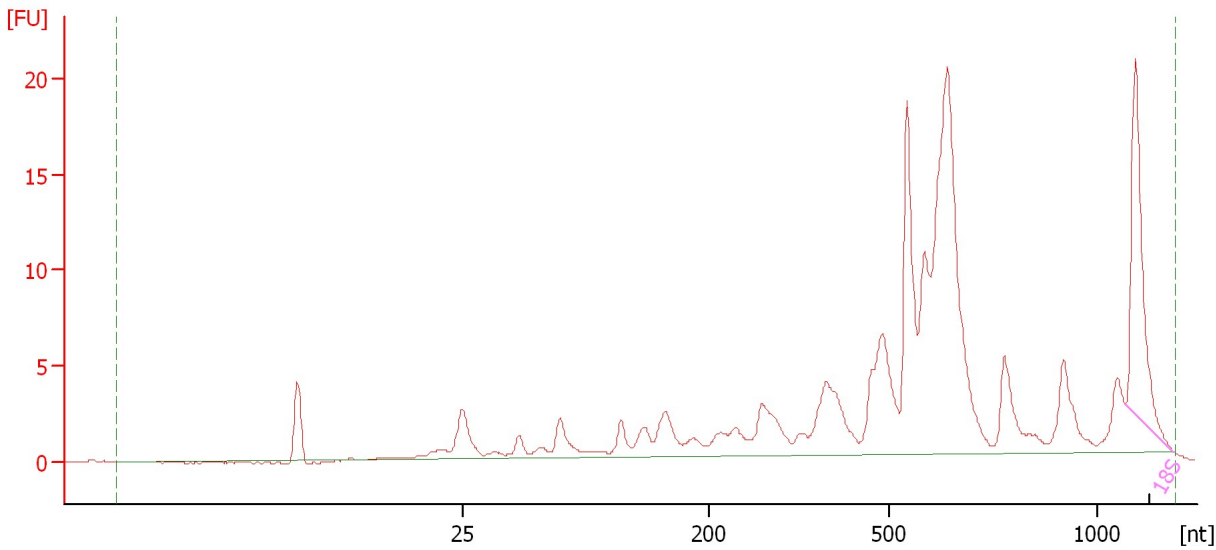
RNA Area:	392.7	RNA Integrity Number (RIN):	2.4 (B.02.08)
RNA Concentration:	552 ng/μl	Result Flagging Color:	
rRNA Ratio [28s / 18s]:	0.0	Result Flagging Label:	RIN: 2.40

Assay Class: Eukaryote Total RNA Nano
Data Path: C:\...ents and Settings\Bioanalyzer\2013-11-18\2013-11-18_001.xad

Created: 11/18/2013 11:39:22 AM
Modified: 11/18/2013 12:08:29 PM

Electropherogram Summary Continued ...

Sample 12



Overall Results for sample 12 : Sample 12

RNA Area:	162.0	RNA Integrity Number (RIN):	N/A (B.02.08)
RNA Concentration:	228 ng/μl	Result Flagging Color:	
rRNA Ratio [28s / 18s]:	0.0	Result Flagging Label:	RIN N/A

Fragment table for sample 12 : Sample 12

Name	Start Size [nt]	End Size [nt]	Area	% of total Area
18S	1,121	1,324	15.6	9.6

Assay Class: Eukaryote Total RNA Nano
Data Path: C:\...ents and Settings\Bioanalyzer\2013-11-18\2013-11-18_001.xad

Created: 11/18/2013 11:39:22 AM
Modified: 11/18/2013 12:08:29 PM

Gel Image

